

SALAMANDER
DESIGNS



AVOCORTM

ADVANCED WORKPLACE SOLUTIONS



SALAMANDER + AVOCOR PARTNER FOR YOU

Salamander supports Avocor to bring together elegant workplace display technology and premium AV furniture for mutual integrators and end customers. These turn-key systems feature innovative low-profile cabinets and mobile carts designed for Avocor displays to provide stunning aesthetics and ergonomically-correct display positioning for the best possible user experience.

Complete Deployment for a Better Experience

- Sleek, Low-Profile Cabinets and Mobile Carts specifically designed for all Avocor Displays
- ADA compliant with UL-listed display mount
- Unique depths for greater space optimization
- Accessible, comfortable, ergonomic display positions for improved productivity and user experience
- Low impact installation - no wall reinforcement, simple toggle bolt installation for anti-tip
- Rapid Global Deployment with standardized, simplified AV solutions that save time and money
- Retrofit-friendly and easily upgradeable



PREFERRED PARTNER PROGRAM

TEAM SALAMANDER



AVOCOR
F50 Series

SALAMANDER
FPS1/ELT/GG

“ Salamander Designs couples strategic expertise with high-quality execution and they are always taking steps to drive more value to support the channel and Avocor touch technology.”

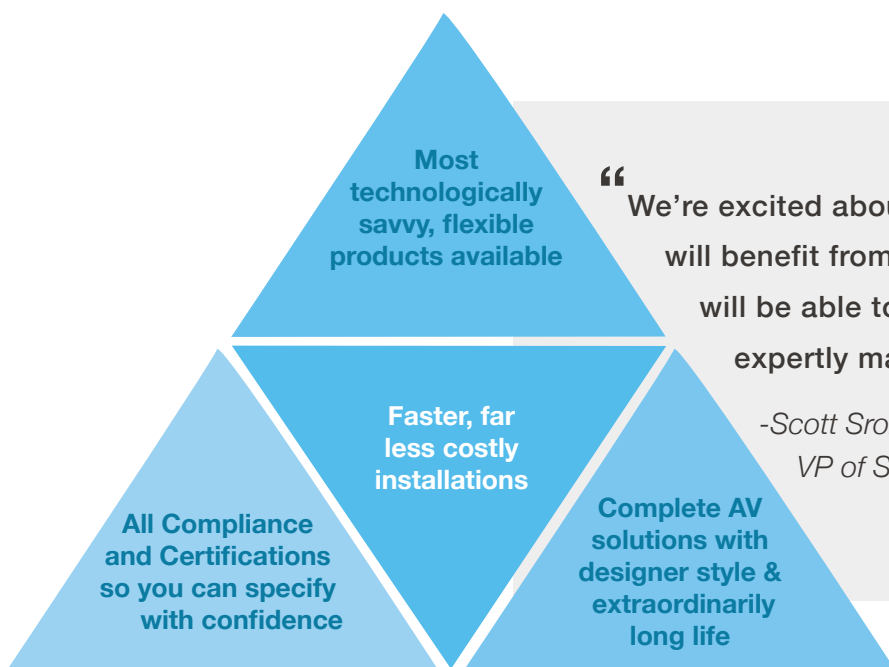
*-Dana Corey
GM & VP of Sales, Avocor*

SALAMANDER + AVOCOR WORKING FOR YOU

The Salamander and Avocor difference lies in the seamless intersection of premium furniture design with AV technology that makes your projects faster to specify, easier to install and more visually appealing than ever before. Considered the “go to” furniture brand by integrators the world over, Salamander has a 25-year history of delivering high-quality workplace furniture, seating and AV-support structures. When coupled with Avocor, there is simply no better integrated system for your projects

#1 Furniture Brand is Designed For You

- 25+ years of providing innovative AV furniture and seating solutions
- #1 furniture brand in CE Pro Analysis - for 14 years in a row
- Premium products manufactured in a 100% solar-powered USA factory
- Uniquely quick-shipped within days
- Backed by unprecedented service and Limited Lifetime Warranty



“ We’re excited about our partnership with Avocor. Integrators will benefit from joint training, sales and marketing – and will be able to enjoy quality, turn-key solutions that expertly match Avocor technology.”

-Scott Srolis

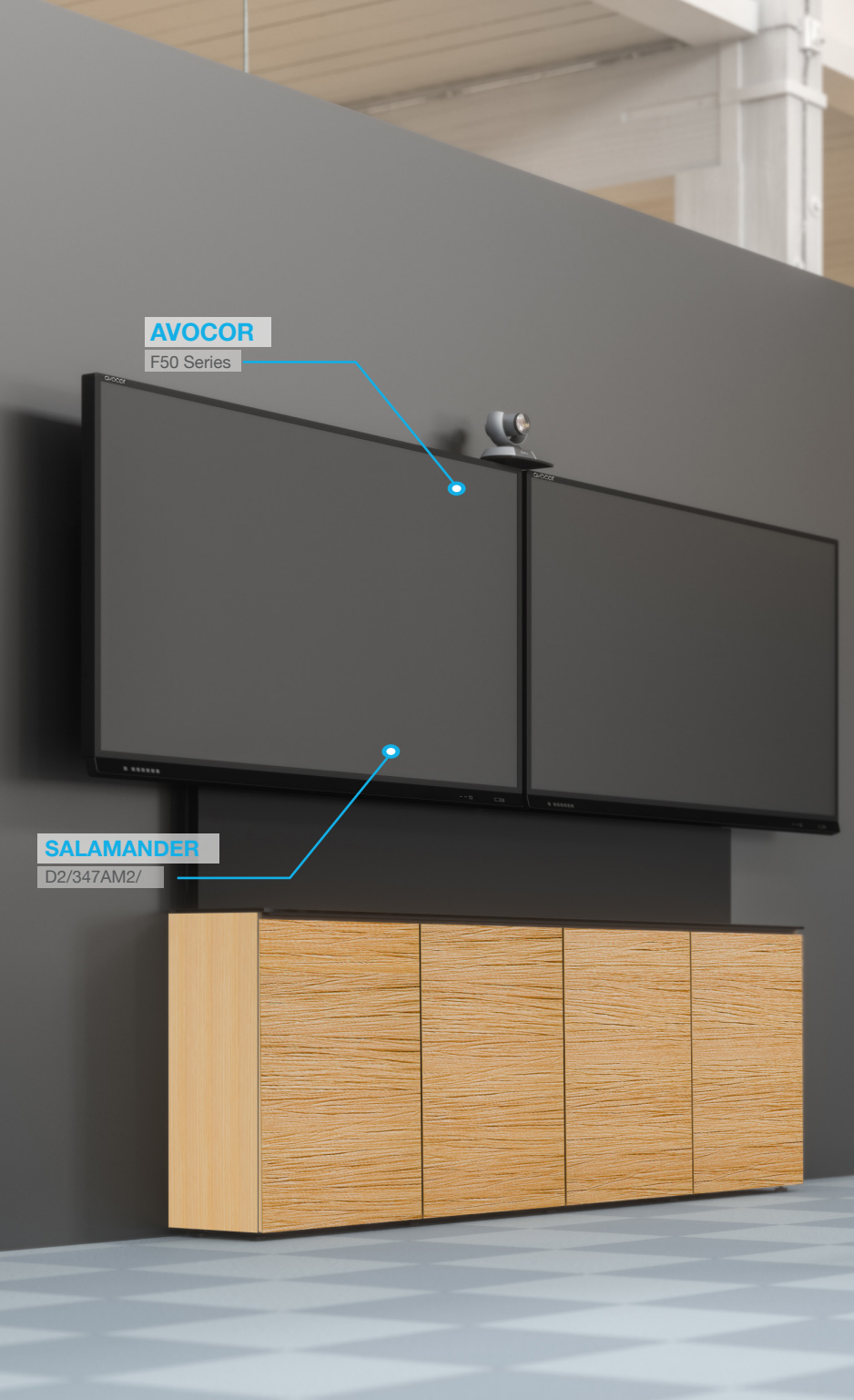
VP of Sales and Marketing, Salamander Designs

SALAMANDER PRODUCTS FOR AVOCOR

The following Salamander products are designed to work with Avocor displays for quick ordering and rapid deployment. Regardless of your specific application, we offer a range of Cabinets for fixed or variable installations, Mobile Stands for projects requiring movement between spaces, and fully adjustable FPS Stands that can convert to a flat, tabletop configuration. Select from our latest styles, materials, sizes and finishes to suit all your interactive display needs.



Salamander products accommodate the Avocor F50 series from 86” to 65”, meaning there is a size for every meeting or learning space.



AVOCOR

F50 Series

SALAMANDER

D2/347AM2/

CABINET SOLUTIONS

- Durability and Safety tested. UL Listed Display Mount
- ADA compliant solutions solve "Protrusion and Operable Part reach limits"
- Low Impact Installation - No wall reinforcement, simple toggle bolt installation for anti-tip
- Rapid Global Deployment with standardized/simplified AV solutions that save time and money
- A unique, shallow depth allows for minimal screen providing accessible, comfortable, ergonomic position that improves productivity and user experience
- Full customizable from accessories to look and feel - upgradeable with new style/skin or easy replacement of tops, end-panels and doors as desired.
- Made in America and backed by Limited Lifetime Warranty

CABINETS / LOW PROFILE



Designed For Avocor Interactive Screens



Ergonomic - minimal screen reach

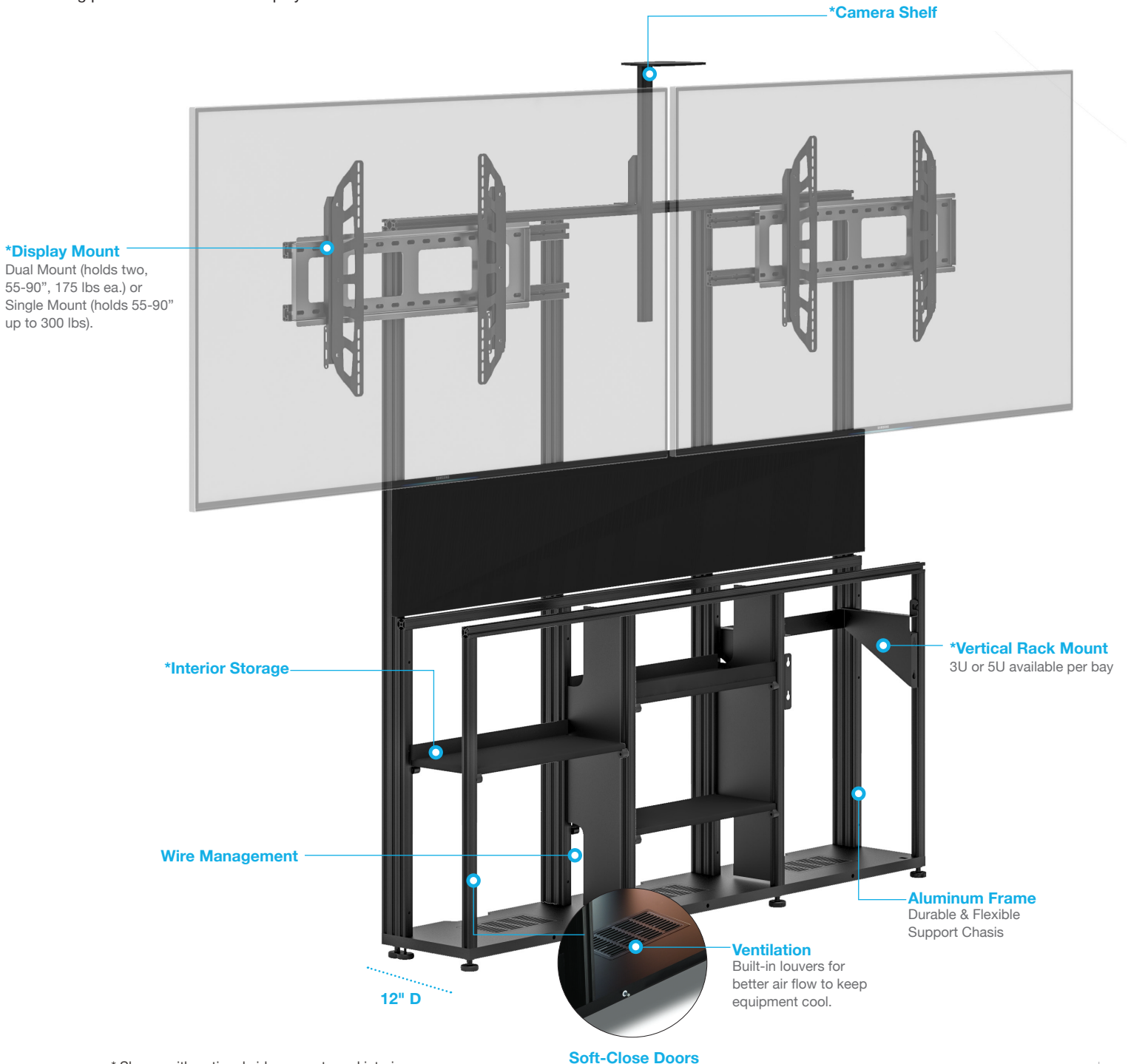


Wall Mounted - provides convenience and frees up floor space



ADA COMPLIANT SOLUTIONS

Low-profile, shallow depth cabinets are sleek, streamlined solutions for supporting AV/IT technology. Our innovative design conceals all equipment and cables, and simple installation allows them to be affixed to any wall without special preparation. A unique, shallow depth provides a comfortable working position for interactive display users.



* Shown with optional video mounts and interiors.



D1/367AM2/

6-Bay, Low-Profile Wall Cabinet Dual Display*

- Dual Display Mount for 65-86" Avocor™ Interactive InGlass™ Displays
- Single Camera Shelf
- (8) Adjustable Trays
- (1) 3-U Vertical Rack Rail
- 31.25"H (795mm) x 129.75"W (3296mm) x 12"D (305mm)

* Ships as two cabinets to be mated together.



D1/347AM2/

4-Bay, Low-Profile Wall Cabinet Dual Display

- Dual Display Mount for 65" Avocor™ Interactive InGlass™ Displays
- Single Camera Shelf
- (4) Adjustable Trays
- (1) 3-U Vertical Rack Rail
- 31.25"H (795mm) x 85.5"W (2172mm) x 12"D (305mm)



D1/337AL/

3-Bay, Low-Profile Wall Cabinet EZ-Touch Lift Display

- EZ-Touch Lift Mount for 65-86" Avocor™ Interactive InGlass™ Displays
- (3) Adjustable Trays
- (1) 3-U Vertical Rack Rail
- 31.25"H (795mm) x 64.75"W (1645mm) x 12"D (305mm)



D1/347AMXL/

4-Bay, Low-Profile Wall Cabinet Single XL Display

- XL Single Display Mount for 65-86" Avocor™ Interactive InGlass™ Displays
- (4) Adjustable Trays
- (1) 3-U Vertical Rack Rail
- Cisco Sparkboard Adapter Available
- 31.25"H (795mm) x 85.5"W (2172mm) x 12"D (305mm)



D1/347AM1/

4-Bay, Low-Profile Wall Cabinet Single Display

- Single Display Mount for 65-86" Avocor™ Interactive InGlass™ Displays
- Single Camera Shelf
- (4) Adjustable Trays
- (1) 3-U Vertical Rack Rail
- 31.25"H (795mm) x 85.5"W (2172mm) x 12"D (305mm)



D1/337AM1/

3-Bay, Low-Profile Wall Cabinet Single Display

- Single Display Mount for 65-86" Avocor™ Interactive InGlass™ Displays
- Single Camera Shelf
- (3) Adjustable Trays
- (1) 3-U Vertical Rack Rail
- 31.25"H (795mm) x 64.75"W (1645mm) x 12"D (305mm)

CABINETS / STYLES



*All styles come standard with leveler feet.

We select the finest materials and finishes. Choose from sleek, hand-polished, high-gloss finishes to richly textured real wood fronts or a contemporary beveled edge style with a mix of materials. If you are looking for **something different or special**, please **contact us to discuss custom options**.



MILAN*
Dimensional, Diamond Pattern,
Solid Surface, Warm White Top



MIAMI*
Gloss Warm,
Solid Surface, Warm White Top



OSLO*
Black Oak Sides, Black Glass Doors
Solid Surface, Matte Black Top



ZURICH*
Opium Brown,
Solid Surface, Matte Black Top



CHICAGO*
Black Oak, Grass-Textured Doors
Solid Surface, Matte Black Top



BERLIN*
Wenge, Wave-Texture Doors
Solid Surface, Matte Black Top



DENVER - OAK*
Natural Oak, Bark-Textured Doors
Solid Surface, Matte Black Top



DENVER - WALNUT*
Medium Walnut, Bark-Textured Doors
Solid Surface, Matte Black Top



Build Your Own
Fabricate You own skins.
Custom Millwork
Specifications Available

***Custom Finish Matching**
Match your finishes using our
in-house finishing department.

*minimum orders, engineering charges and lead times may apply.

AVOCOR

F50 Series

SALAMANDER

FPS1/EL/GG

MOBILE STANDS



TABLE



DISCUSSION



PRESENTATION



TRAVEL

DISPLAY STANDS / ELECTRIC LIFT



Designed For Touchscreens



Ergonomic Minimal Screen Reach



ADA COMPLIANT SOLUTIONS



LISTED

Large Handles and a wide stance provide superior stability and maneuverability



Fully Adjustable Motor Control improves user experience and productivity for any size user for any work assignment

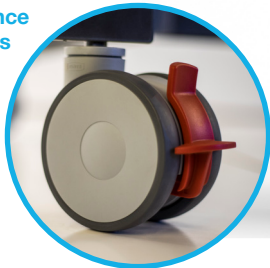
Wire Management allows for clean and uncluttered installation



* ADA COMPLIANT

Wide base stance allows convenient accessibility

High Performance Locking Casters provide smooth transport over any surface



Accessories include a retractable cable reel, storage compartment for rack mounted gear, rear attaching shelf for laptops and keyboards, a storage compartment cover, and even road cases for the Stand and display attached.

Compact, Telescoping Design minimizes storage and transport requirements



ROAD CASE EQUIPMENT FOR EASY DEPLOYMENT



Combine a mobile stand with a road case to provide secure and convenient transport of your display.

* Accommodates Stand & Mounted Display



DISPLAY STANDS / ELECTRIC LIFT



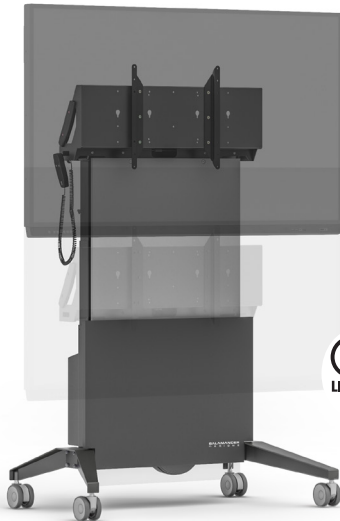
FPS1XL/EL/GG
XL Electric Lift Mobile Stand

Stand for 75" & 84" Avocor™ Interactive InGlass™ Displays

VESA Compliant:

Horizontal: 400, 600, 800, 1000, 1200mm
Vertical: 400, 500, 600mm

Export Model: FPS1XL/EL/GG/EX



FPS1/EL/GG
Electric Lift Mobile Stand

Stand for 65" Avocor™ Interactive InGlass™ Displays

VESA Compliant:

Horizontal: 200, 300, 400, 600mm
Vertical: 200, 300, 400mm

Export Model: FPS1/EL/GG/EX



FPS1/ELT/GG
Electric Lift & Tilt Mobile Stand

Stand for 65" Avocor™ Interactive InGlass™ Displays

VESA Compliant:

Horizontal: 200, 300, 400, 600mm
Vertical: 200, 300, 400mm

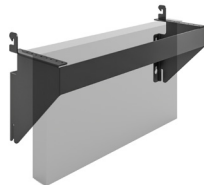
Export Model: FPS1/ELT/GG/EX

ACCESSORIES

**Electronics Sold Separately*



Keyboard Storage Shelf*
FPSA/KS/GT



Rack Mounting Equipment Bracket, 3RU*
FPSA/VR/3U



Retractable Power Cable Reel - USA Only
FPSA/CR



Retractable CAT6 Cable Reel
FPSA/CR/CAT6



Power Distribution Unit, 9 Outlets - USA Only
SA/RM/PDU



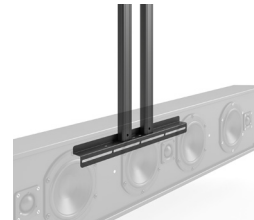
Secure Equipment Storage Cover
FPSA/SC/GT



Small Shelf with Mounting Straps*
FPSA/AS1



Wireless Remote Control with Memory
FPSA/RF1



Speaker Bracket*
FPSA/SBK



Camera Shelf*
FPSA/CS

DISPLAY STANDS / FIXED HEIGHT



Designed For Touchscreens



Ergonomic Minimal Screen Reach



ADA COMPLIANT SOLUTIONS

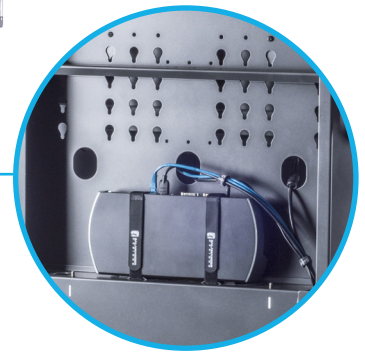
Adjustable Height Position
set during assembly

Large Handles
provide superior stability and maneuverability

Secure Rear Panels
allow for easy access to concealed storage with strap mounted peripherals



2RU Vertical Rack
with interior cable management



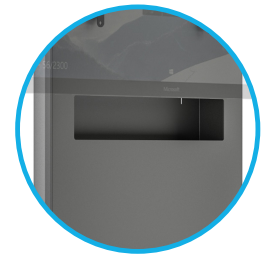
External Storage
Cubby on front or rear (depending on model)



Vents allows for airflow of peripherals

Premium Casters
provide smooth transport over any surface

Accessories include a retractable cable reel, rear attaching shelf for laptops and keyboards, speaker mount and camera shelf



DISPLAY STANDS / FIXED HEIGHT

Fixed height, mobile stands were designed to meet your needs, these stands deliver sleek design, functionality and mobility.



FPS1XL/FH/GG
XL Fixed Height Mobile Stand

Stand for 75" & 84" Avocor™ Interactive InGlass™ Displays

VESA Compliant:
 Horizontal: 400, 600, 800, 1000, 1200mm
 Vertical: 400, 500, 600mm



FPS1/FH/GG
Fixed Height Mobile Stand

Stand for 65" Avocor™ Interactive InGlass™ Displays

VESA Compliant:
 Horizontal: 200, 300, 400, 600mm
 Vertical: 200, 300, 400mm

ACCESSORIES

**Electronics Sold Separately*



Keyboard Storage Shelf*
FPSA/KS/GT



Retractable Power Cable Reel - USA Only
FPSA/CR



Power Distribution Unit, 9 Outlets - USA Only
SA/RM/PDU



Speaker Bracket*
FPSA/SBK



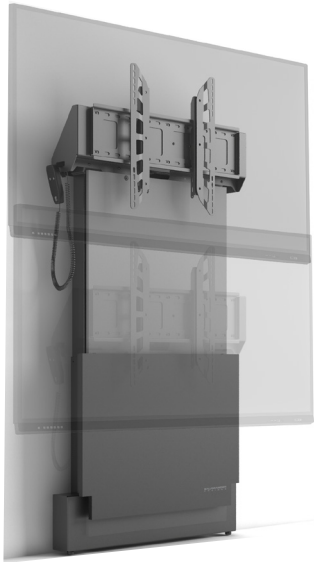
Camera Shelf*
FPSA/CS

ON-WALL SOLUTIONS

AVOCOR
F50 Series

SALAMANDER
FPS1W/EL/GG

WALL STAND / ELECTRIC LIFT



FPS1W/EL/GG Electric Lift Wall Stand

Stand for 65-86" Avacor™ Interactive InGlass™ Displays

VESA Compliant:
Horizontal 200 - 8000mm
Vertical 200 - 500mm



Range of Travel: Min 34" (836mm) - Max 59.6" (1513mm)

Export Model: FPS1W/EL/GG/EX

ACCESSORIES

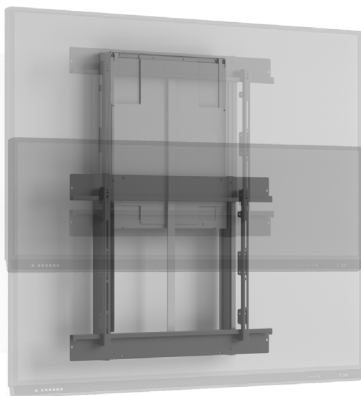


Camera Shelf
FPSA/CS



Wireless Remote
Control with Memory
FPSA/RF1

WALL MOUNT / MANUAL ASSIST LIFT



EZ1/ML145 EZ Touch Wall Mount Manual Assist Lift *Range of Travel 15.75" (400mm)*

Stand for 65-75" Avacor™ Interactive InGlass™ Displays

VESA Compliant:
Horizontal 200 - 800mm
Vertical 100 - 440mm

WE ALSO CUSTOMIZE

Salamander also offers Avocor customers/clients virtually unlimited design possibilities and consultation.

For more information on custom options, email custom@salamanderdesign.com or visit

SalamanderDesigns.com/Commercial



Virtually unlimited custom design options

Design Your Own

Customizable cabinet shaped by your needs in 5 easy steps

Build Your Own

Fabricate your own skins.
Custom Millwork Specifications Available

Branding

Personalize Display Stands with your logo or full-wrap graphic.

Mix & Match Panels

Swap doors, sides, and tops from our stock finishes to create your own look.

*Custom Finish Matching

Match your finishes using our in-house finishing department.

*Custom Sizes

*Minimum orders, engineering charges and lead times may apply.

SALAMANDER + AVOCOR WORKING FOR YOU

We welcome the opportunity to speak with you about how we can bring together elegant workplace display technology and premium AV furniture for you. For more information, please contact us.



SALAMANDER DESIGNS

[salamanderdesigns/commercial.com](https://salamanderdesigns.commercial.com)

sales@salamanderdesigns.com

AVOCOR[™]

avocor.com

info@avocor.com

 **FlatFrog**

flatfrog.com

Interactive InGlass[™] Display

