

Anywhere. Anytime.



Give your communications an edge with Sony's Remote PTZ Camera Solutions

In today's environment, it's more important than ever to connect employees, students, and congregants with immersive audiovisual experiences no matter where they are. Our easy-to-use remote solutions turn one-way presentations into dynamic and interactive communications. Our powerful remote cameras, power line array speaker and hands-free ceiling microphone help to ensure that presenters are seen and heard with absolute clarity, while our latest advances in video analytics add an exciting new dimension to rich-media content sharing. See how our flexible, cost-effective, and easy-to-use presentation tools can bring your meetings, lectures, and sermons to life.

SRG-X40UH & SRG-X40UH/W 4K PTZ Cameras In stock and Shipping NOW Professional UBS/UVC communication in 4K detail

- Easy connection with choice of USB & HDMI connections for stress-free integration with existing systems
- USB Video Class (UVC) provides smooth video communications
- Fast, smooth P/T/Z movement keeps up with all the action (up to 170°) to cover larger space with less cameras
- Detailed 4K images with little noise, even in the dark -automatic switching from Day/Night mode
- Clear Image Zoom technology increases maximum magnification to 40x (FHC) /30x (4K)
- Remote control & simple power with single LAN cable (POE+ support & VISCA/VISCA over IP Control) resulting in less cabling, effort, and costs
- Tabletop or ceiling mountable
- [Learn More](#)

SRG-A40 & SRG-A12 4K PTZ Cameras Arriving Summer 2023 Automatically & naturally tracks and captures video

- Advanced PTZ Auto Framing- detects and tracks the target
- Built-in AI-powered video analytics
- Smooth P/T/Z movement regardless of posture, movement, or attire
- With Clear Image Zoom technology, increase max. magnification to 40x (A40)/24x (A12)
- Wide Angle Zoom for close ups and broad audience shots
- IP Streaming 4K/30p video
- HDMI/SDI outputs /POE++ support
- Integrated tally lamp provides visual confirmation of shooting status
- Tabletop or ceiling mountable
- [Learn More](#)

SRG-X400 & SRG-X120 Full HD PTZ Cameras In stock and Shipping NOW Superb Image Quality & Efficient IP Live Production Capabilities

- Superb full-HD 1080/60p video with high-picture quality, PoE+, 3G-SDI, IP and HDMI connections for easy integration with existing systems
- NDI®|HX compatibility via optional license supports efficient IP-based live production and flexible configuration
- RTSP, RTMP(S) and SRT (Secure Reliable Transport) are supported. Video can be streamed directly from a camera
- Fast, smooth PTZ Motion Sync function allows smooth blending of movements for seamless, professional transitions.
- Clear Image Zoom technology increases maximum magnification to 40x (FHC) /30x (4K) for the SRG-X400
- Tabletop or ceiling mountable
- [Learn More](#)



Outfit the Room With Sony Video and Audio Solutions

REA-C1000 EDGE AI Analytics Video Presenter Transform Communications



- Create impactful video presentations
- Reduces time, expense, and human resources
- With AI-led technology, improve the quality of communication by empowering the presenter to deliver content & to engage their audience
- [Learn More](#)

SLS-A1 Powered Line Array Speaker Putting the Audio Back in AV



- Seamlessly integrates with Sony displays, video walls, projectors, and cameras
- Eight full-range driver units mounted in a line array configuration, supplemented by a powerful integrated multi-channel amplification system. Sound is remarkable!
- [Learn More](#)

MAS-A100 Beamforming Mic w/Speech Reinforcement Hands-Free Presentations



- State-of-the-art speech reinforcement and recording solution that enables hands-free and contactless lectures and presentations
- Simply affix to the ceiling and its ready to use.
- Single cable connection thanks to Dante and PoE that links third-party systems
- Sound is remarkable!
- [Learn More](#)

Applications

<h3>Education</h3> <p>By deploying SRG cameras, faculty members can offer students new educational opportunities anytime & anywhere. With the real-time distribution of lectures & other live events, academic institutions can deliver classes & presentations, and professors can efficiently share their opinions & collaborate via networked communication.</p>	
<h3>Corporate/Boardroom</h3> <p>SRG Series cameras are excellent for various business communication applications, corporate training, videoconferencing, and broadcasting management meetings to remote locations. Each camera in the series offers particular features and benefits to fit the various needs of applications.</p>	
	<h3>Government/City Council/Remote Justice</h3> <p>Remotely controlled by the RM-IP10 or RMIP500, the SRG Series cameras can quickly capture the actions at council meetings or trials. With the ability to select multiple pre-defined PTZ positions, each camera provides simple streamlined operation and can reduce the need for additional cameras and operators resulting in substantial cost savings.</p>
<h3>Healthcare/Medical Recording & Training</h3> <p>From patient monitoring to surgical recording & training, SRG cameras provide the high-quality and reliability required by health professionals. With a host of interfaces to enable simple connectivity to other room devices, Sony PTZ cameras are just what the doctor ordered.</p>	<h3>Weddings/Faith Based Services</h3> <p>By using large projection or displays in combination with high-sensitive SRG Series cameras, clear video images can be delivered with accurate color reproduction. Attendees can become more involved in the service and follow ongoing events better than ever before.</p>

Video Library

- [SRG-A40 & SRG-A12 PTZ Camera Introduction - PTZ Auto Framing camera with AI analytics - YouTube](#)
- [SRG-X40UH 4K PTZ Camera Introduction - YouTube](#)
- [SRG-X400 PTZ Camera IP Streaming Excellence - YouTube](#)
- [Sony Edge REAC100 Video Analytics Introduction - YouTube](#)
- [Sony MAS100 Beamforming Microphone Introduction - YouTube](#)
- [Sony SLS-1A Powered Line Array Speaker Introduction - YouTube](#)

For more information on Sony Professional Display Solutions, please visit our website @ pro.sony/AVsolutions

© 2023 Sony Electronics Inc. All rights reserved. Features and specifications are subject to change without notice. Reproduction in whole or in part without written permission is prohibited. "Sony" is a registered trademark of Sony Corporation. All other trademarks are the property of their respective owners.

SONY

Transform presentations with the Edge AI Video Analytics Solution.



REA-C1000 Edge
Analytics Appliance

Get ready to grab your audience's attention with the first AI-based video analytics system that lets you create a powerful real-time video presentation without significant added expense, time, or manpower.

The Edge Video Analytics solution, model REA-C1000, transforms video presentations using artificial intelligence. The compact and lightweight system uses advanced AI-based video analytics technology to analyze input received from connected cameras, including Sony's line of PTZ cameras, and automatically extract the object in focus to combine it with other images in real time. This unique technology using motion and face detection and color and shape recognition effectively makes Edge Analytics the powerful brain of any connected camera and AV set-up.



Transform your Audience Engagement

With Edge Analytics you can engage your audience like never before:

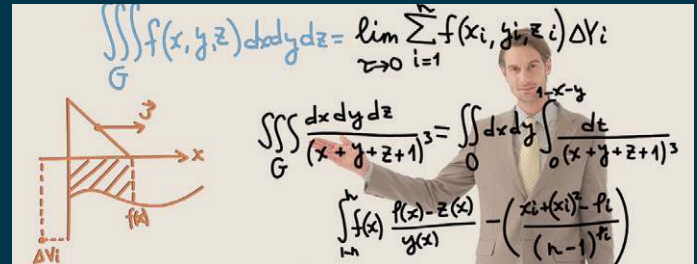
- Use tracking to stay in focus and within the frame.
- Extract characters and diagrams in real time from white or black boards.
- Create animated imagery, still pictures, and supporting graphics – without a dedicated studio.
- Show two different images at once for added impact.
- Zoom in on an audience member to show reactions or highlight questions.



Transform Your Presentations With Powerful Features

Handwriting Extraction and Presenter Overlay (REA-L0100).

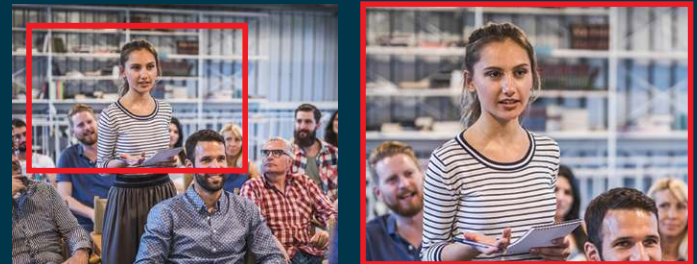
Handwriting extraction uses AR (Augmented Reality) technology to ensure that words and diagrams written on a white or black board are extracted and displayed in real time in front of the presenter like a floating board. It helps record the presenter's ideas, thinking process, and passion on video and transmit them to an audience.



PTZ Auto Tracking (REA-L0200). Edge Analytics, combined with Auto Tracking software, enables the Sony PTZ cameras to accurately and smoothly track your figure to ensure you stay in focus and within the frame throughout your presentation. This is another cost-effective solution that eliminates the cost of a camera operator.



Close Up by Gesture (REA-L0300). This intelligent zoom feature allows the video to recognize when someone in the audience stands up from a seated position, and automatically zooms in on the corresponding location. You can display both a wide-angle view and an electronically zoomed view in real time.



Chroma-key-less CG Overlay* (REA-L0400). Sony's motion detector technology can extract and overlay your figure on any background image, animation, or video in real time without a dedicated green screen. So you can create specific overlay content such as animated imagery, still pictures, and supporting graphics, which provide an interesting backdrop to your presentation. This is a hassle-free and easy-to-operate solution, without the cost of a dedicated green screen, lighting or skilled staff.



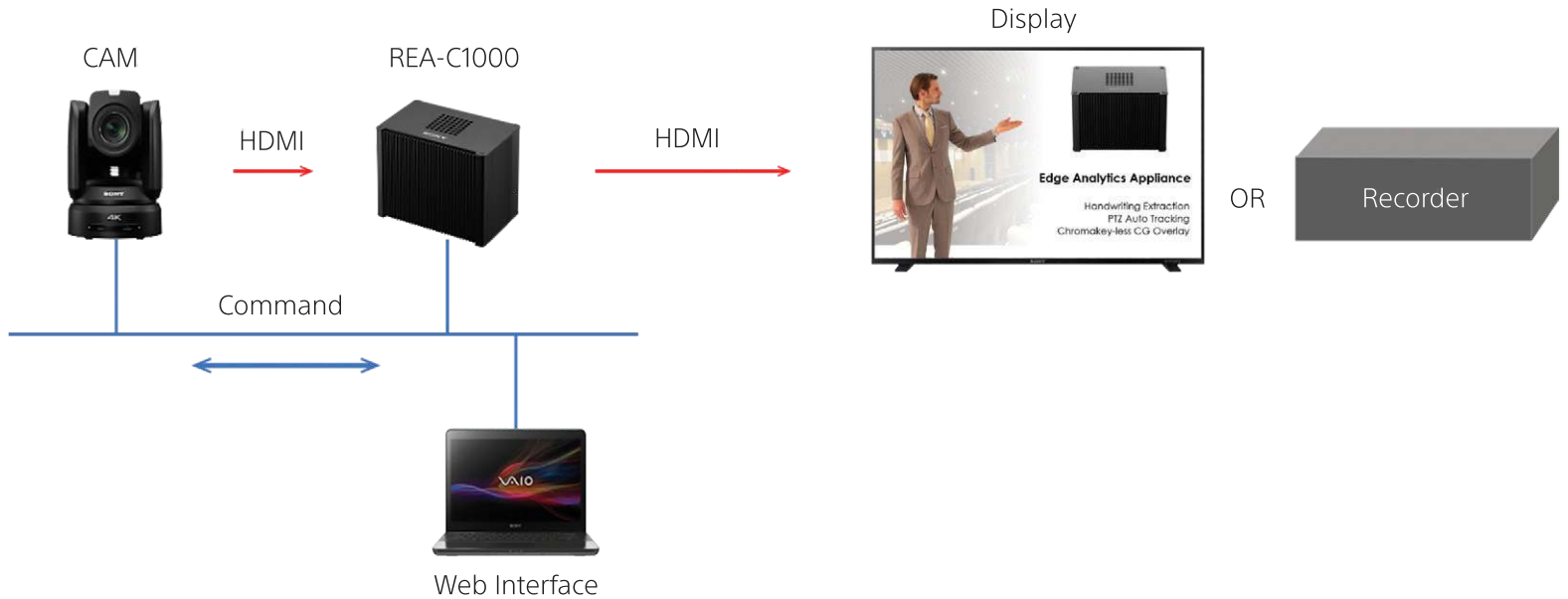
Focus Area Cropping* (REA-L0500). Focus Area Cropping allows an image frame captured by a single camera to be viewed as two different output images simultaneously. For example, you can stream a close-up Full HD image as a cutout from the main wide-angle 4K image. In addition, the cropped area can be selected as static or dynamic to follow your movements using built-in features like motion and face detection and color pattern and shape recognition.



*Chroma-key-less GC Overlay and Focus Area Cropping software to be available late 2019.

System Workflow

The Edge Analytics solution is compatible with Sony network cameras to allow for the transmission of the video images straight to the display or recording device. This enables the handwriting extraction technology, for example, to be used easily without any distraction to the presenter or audience.



As the powerful brain of any connected camera and AV set-up, Edge works like a virtual camera operator at your fingertips and allows you to cost-effectively create professional, engaging content for teaching, training, seminars, events, and conferences in a broad range of applications:



PTZ Cameras

Sony's latest IP PTZ cameras integrate beautifully with the Edge system, enabling a simple, cost-effective lecture capture solution.

The PTZ remote camera line-up combines superb image quality in HD or 4K, with a wide viewing angle with smooth, silent movement. Multiple interfaces, flexible control options and Power-over-Ethernet make them easy to integrate into any size venue.



Transform the impact of your presentations with the Edge Video Analytics Solution.

See our first AI-based video analytics system in action at your location and learn firsthand how it can transform your presentations.

Contact your Sony Representative or visit pro.sony/edge to schedule a demo at your location.



Specifications

REA-C1000

Handwriting Extraction	Required License. (60-day trial license is built-in as default)
PTZ Auto Tracking	Required License. (60-day trial license is built-in as default)
Close-up by Gesture	Required License. (60-day trial license is built-in as default)
Chromakey-less CG Overlay	Required License. (Available from firmware Version 2*)
Focus Area Cropping	Required License. (Available from firmware Version 2*)
Fixed Area Cropping	Crop the static area of the whole view at once.
Intuitive Web-based User Interface	Supports Google Chrome Ver. 70 or later
HDMI IN 1	Up to 4K 30p (3840x2160 / 29.97P, 25P)
HDMI IN 2	Up to FHD 60p (1920x1080 / 59.94P, 50P)
HDMI OUT 1	[EDID]: Automatically determine and output a video image that is compatible with the connected output device. Up to 4K 30p (3840x2160 / 29.97P, 25P)
HDMI OUT 2	[EDID]: Up to FHD 60p (1920x1080 / 59.94P, 50P)
Network (LAN)	RJ-45 (1000BASE-T)
DC power input	12V5A (required 3 rd party AC Adapter)
MIC IN	Stereo, ø3.5 mm mini jack (Available from firmware version 2*)
HDMI Embedded Audio	(Available from firmware version 2*)
RTSP streaming	H.264 (Available from firmware version 2*)
IPv4, IPv6	Internet Protocol version
Role-based Authorization	Access permissions of one administrator and nine general users
Access Restrict	Configure the security function to restrict the computers that can access the unit
Dimension / Mass	Height: 3.8in , Width: 5.6in , Depth: 3.6in / Approx. 1.9lb (Height: 97mm , Width: 141mm , Depth: 91mm / Approx. 0.85kg)
Operating temperature	41°F to 104°F (5°C to 40°C)

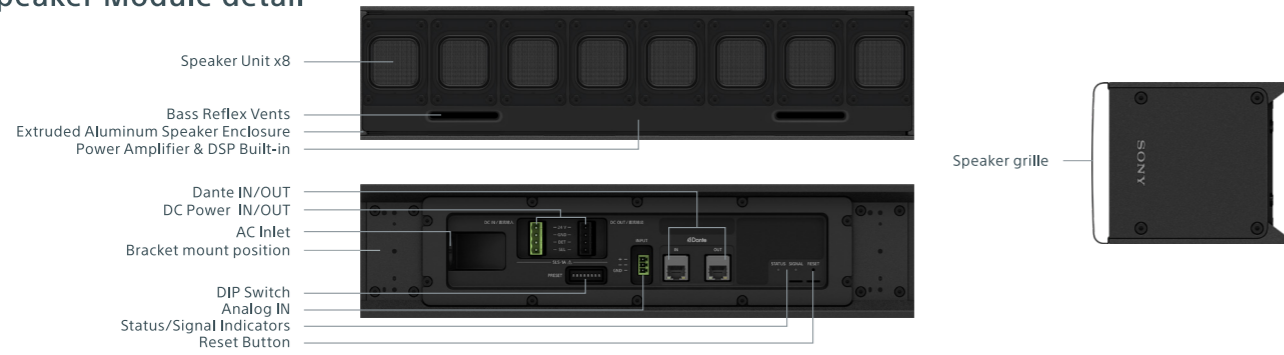
*Version 2 firmware release planned to be available late 2019

REA-C1000



Separate Power Adaptor Required
Model# REA-ADAPTOR

Speaker Module detail



Powered Line-Array Speaker
SLS-1A



(System)	Powered Line-Array Speaker	SLS-1A					
	Module	(1module)	(2module)	(3module)	(4module)	(5module)	(6module)
	Frequency Range *Frequency characteristic measured at anechoic chamber	80Hz-20kHz					
	Horizontal Dispersion *1-4k average, -6dB *At Vertical style (Vertical Dispersion at Horizontal style)	200degrees					
	Vertical Opening Angles *At Vertical style (Vertical Opening Angles at Horizontal style)	Software Adjustable: Max 40degrees	Software Adjustable: Max 50degrees	Software Adjustable: Max 60degrees	Software Adjustable: Max 70degrees	Software Adjustable: Max 80degrees	Software Adjustable: Max 90degrees
	Vertical Beam Steering Angles *At Vertical style (Horizontal Beam Steering at Horizontal style)	20degrees	20degrees	30degrees	30degrees	40degrees	40degrees
	Maximum SPL (1m) *Max SPL calculated based on free-field sensitivity, and without beam steering, spreading applied.	105dB (peak 112dB)	111dB (peak 118dB)	115dB (peak 122dB)	117dB (peak 124dB)	119dB (peak 126dB)	121dB (peak 128dB)
	Peak SPL (30m) *Assumption signal loss at 30m and 15dB	97dB	103dB	107dB	109dB	111dB	113dB
	Typical Usable Throw Distance *Typical Maximum Usable Throw Distance includes considerations for reverberation and speech intelligibility.	4m	8m	12m	16m	20m	25m
	Low-frequency Beam Control Limit	1.25kHz	630Hz	400Hz	315Hz	250Hz	200Hz
	Enclosure type	Bass reflex type					
	Driver	Flat and Square speaker unit, 35mm x 35mm (1 7/16 in x 1 7/16 in) Full range x 8					
	Magnetic shielding	No					
	Dust and water resistant	No					
(System)	Amplifier Channels / Rated Power	Power Output (rated) 10W x 8channels (at 6ohms, 1kHz, 1% THD)					
	Amplifier type	Class-D					
	Protection circuit	Speaker Processing: Clipping limit Amplifier: Terminal shutdown/Overheat protection/Over voltage protection/Under voltage lock out/DC protection Power: Overload protection/Overheat protection					
(Electric performance)	Power (AC) Voltage	Universal AC 100V - 240V, 50Hz/60Hz					
	Power (AC) Connector	IEC60320-C7					
	Power Consumption	87W/Standby 7W (Dante IN or Dante OUT: 1port), 8W (Dante IN and Dante OUT: 2ports)					
(Input/Output)	Analog Audio Input	Euro type terminal block (Pitch 3.81mm, 3-pin, Green)					
	Analog Audio Maximum Input Level (4stages)	Balance connection: +8.2dBu (2Vrms) / +12dBu/+18dBu/+24dBu Unbalance connection: +8.2dBu(2Vrms)/+12dBu/+18dBu					
	Input Sensitivity (4stages)	Balance connection: +8.2dBu (2Vrms) / +12dBu/+18dBu/+24dBu Unbalance connection: +8.2dBu(2Vrms)/+12dBu/+18dBu					
	Input Impedance	Balance connection: 94kΩ / Unbalance connection: 47kΩ					
	Digital Audio Inputs	1-channel of Dante digital audio network (RJ-45) *8-channel of Dante digital audio network (RJ-45) is possible					
	Digital Audio Outputs	1-channel of Dante digital audio network (RJ-45) *8-channel of Dante digital audio network (RJ-45) is possible					
	Power (DC) Input/Output	Euro type terminal block (Pitch 5.08mm, 4-pin, Black/Green)					
	DIP Switch	Select preset beam setting and Dante® input channel (1ch/8ch)					
(Integrated DSP)	A/D and D/A Converters	24-bit, 96kHz					
	FIR Filter Support	1024tap @ 96kHz					
	Audio Latency	13mS					
(Physical specification)	Enclosure	Cabinet: Extruded aluminum (powder coated)		Side/Back panel: Plastic			
	Grille	Punching metal steel plate (Painted)					
	Indicators	Status, Signal, LAN					
	Operating Temperature Range (Ambient)	0°C - 40°C					
	Cooling System	Cooling is passive only					
	Environmental	Indoor only					
	Install	Integrated speaker brackets; allows horizontal yaw to 0-degree or 10-degree direction					
	Dimensions (w×h×d) (approx.)	384mm x 92mm x 100mm (15 1/8 in x 3 5/8 in x 4 in) (without speaker grille) 384mm x 92mm x 110mm (15 1/8 in x 3 5/8 in x 4 3/8 in) (with speaker grille)					
	Mass (approx.)	4kg (8lb 14 oz) (with speaker grille)					
	Power (DC) Input/Output	Euro type terminal block (Pitch 5.08mm, 4-pin, Black/Green)					
	Included Accessories	Speaker grille (attached to the speaker) (1), Power cord (1), Power cascade cable (Euro type terminal block) (1), Ethernet cable for audio signal cascade (RJ-45) (1), 3-pin Euro type terminal block header (1), Speaker bracket(no slant) (2), Speaker bracket (10-degree slant) (2), Speaker joint bracket (no slant) (1), Speaker joint bracket (10-degree slant) (1), Wall mounting bracket (1), Metal joint fitting for wall mounting brackets (1), Detachment stopper (2), Metal joint fitting for attaching a safety wire (2), Cable clamp (2), Spacer pad A (2), Spacer pad B (1), 4x10 screw with washer (9), Shoulder screw (2), Operating Instructions (this manual) (1), Reference Guide (1), Warranty card (1)					



For full features visit

<https://pro.sony/products/professional-speakers/SLS-1A>

© 2022 Sony Corporation. All rights reserved. Reproduction in whole or in part without permission is prohibited. Features and specifications are subject to change without notice. All non-metric weights and measurements are approximate. "Sony" is registered trademarks or trademarks of Sony Corporation. All other trademarks are the property of their respective owners.

Distributed by



SLS-1A

Powered Line-Array Speaker

delivers spectacular sound with fine beam control and flexible installation

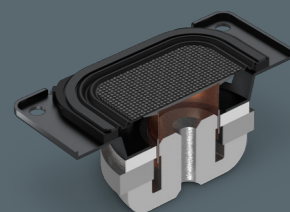
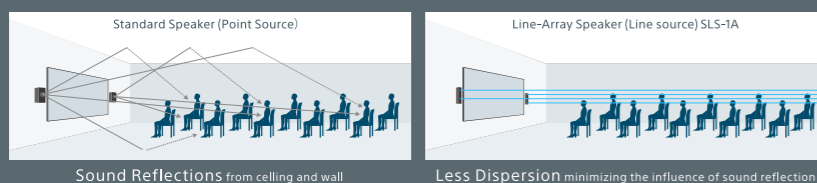
Give every audience member a rich, powerful sound experience in corporate and educational environments. The SLS-1A is a compact, uniquely versatile line-array speaker system that offers an ideal audio reinforcement solution with large displays and projectors.



Clear, low-distortion full-range sound

Better sound in any room

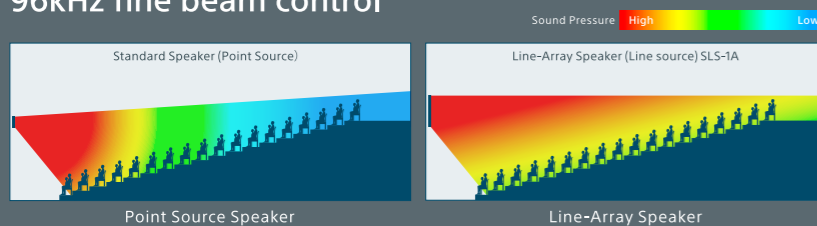
Unlike standard speakers, the line array design of the SLS-1A minimises sound reflections from ceilings, walls and floors. Audiences can enjoy uniform, clearly directed sound with less attenuation over long distances, independent of room size or shape.



Magnetic fluid speaker

Original Sony technology eliminates voice coil damper found in standard speakers, reducing distortion for clearer sound.

96kHz fine beam control



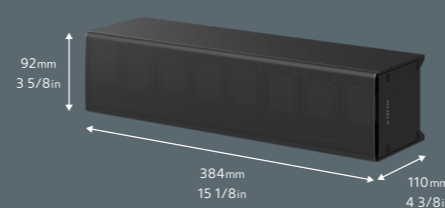
The finely-controlled beam for sound area creation and pressure adjustment is also particularly suited to providing even sound coverage in venues. Not affected by the shape of rooms, ideal sound can be delivered.



Compact size, flexible installation

Compact yet powerful

Rigid aluminium body measuring just 92 x 384 x 110* mm houses speakers and amplification, delivering high sound pressure levels from a compact unit.
* 100mm without speaker grille

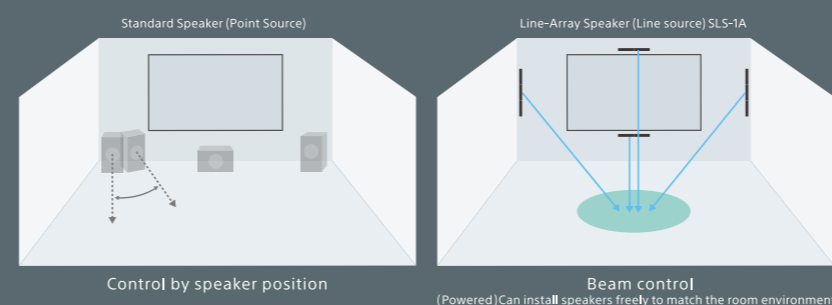


Flexible mounting and expansion options



Mount horizontally or vertically. Easily link multiple units for larger scale sound installations.

Flexible beam setting

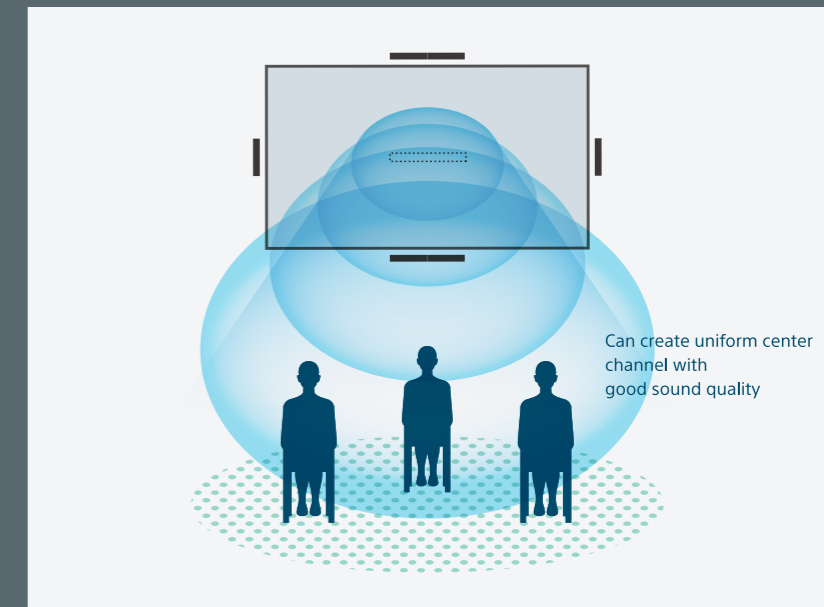


Adjust sound settings using hardware switches, third party EASE® Focus software or Sony's PC application "Line-Array Speaker Manager" that controls beam steering, spread.

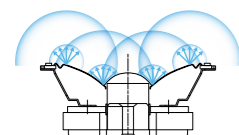
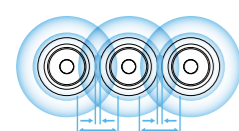


On-screen centre sound localisation

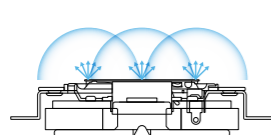
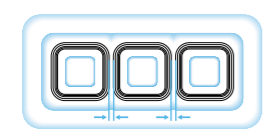
The SLS-1A is an ideal sound reinforcement partner for large flat-panel displays and projectors. In contrast with normal point-source speakers, the SLS-1A offers a large 'sweet spot' that can be accurately controlled for clear, consistent sound over a wide listening area in any venue – from corporate showrooms, entrance lobbies and retail spaces to lecture theatres and auditoriums. The finely-controlled beam is also particularly suited to providing even sound coverage in venues like auditoriums with a raked floor.



Standard circle type diaphragm /Standard concave shape



Flat and Square Diaphragm(SLS-1A)



Sony's Unique Technology: Flat and square Diaphragm provides ideal point source with reduced inter-modulation distortion.



The SLS-1A supports Dante® digital audio network to simplify wiring in large-scale AV installations



Ease® Focus 3

Sound design simulation for sound pressure optimization by "EASE® Focus" software



Line-Array Speaker Manager

Easy steering/spread setting by Sony's Line-Array Speaker Manager



Hardware DIP Switch

Simple preset menu for setting spread & steering on hardware switch (6patterns)

*Dante® is a registered trademark of Audinate Pty Ltd.
*EASE® Focus is a registered trademark of AFMG Technologies GmbH