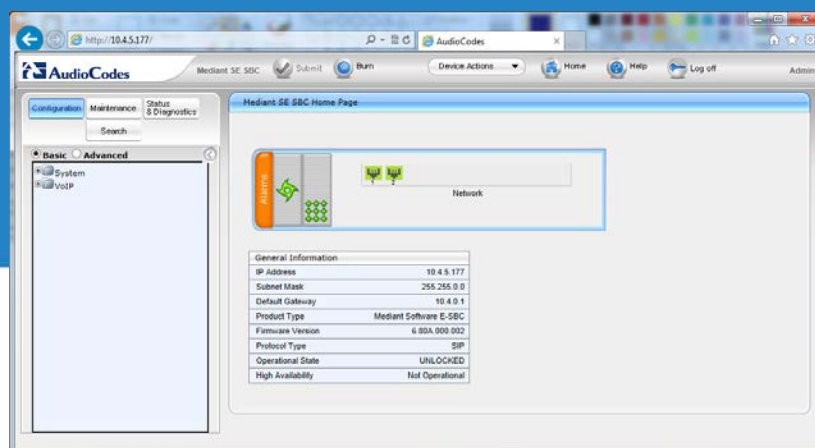


Mediant Server Edition (SE)

Session Border Controller

Version 7.0



```
Mediant SBC
ver 6.00A.000.002

-----
- To start installation, press <ENTER> key.
- To start installation from RS-232 serial console, type rs232 <ENTER>.
- To boot from local disk, type local <ENTER>.
boot: _
```

Table of Contents

1	Introduction	7
1.1	Product Package.....	7
1.2	Installation Prerequisites	8
1.2.1	Hardware	8
1.2.2	Software.....	8
2	Installing the Product.....	9
2.1	Hardware.....	9
2.2	Setting Storage Controller in HP DL360 Gen9.....	9
2.3	HP iLO Functionality Limitations	9
2.4	Server BIOS Settings.....	9
2.4.1	Additional BIOS Settings for HP DL360 Gen9	10
2.5	Software	10
2.5.1	Installing the Mediant SE SBC	10
2.5.2	Connecting Mediant SE SBC to the IP Network.....	13
2.5.2.1	Identifying Network Ports	13
2.5.2.2	Identifying Incompatible Hardware Components	14
2.5.3	Reconfiguring Default IP Address to Match Customer Network Settings	14
2.5.4	Installing an HA System.....	16
3	Licensing the Product.....	17
3.1	Entering the Product Key	17
3.2	Obtaining and Activating the License Key.....	18
3.3	Installing the License Key	19
A	Rescue Options.....	21
A.1	Taking a Snapshot	21
A.2	Viewing Available Snapshots	22
A.3	Changing the Default Snapshot	22
A.4	Deleting a Snapshot.....	22
A.5	Manual Recovery	22
A.5.1	Returning to the Default Snapshot	23
A.5.2	Fixing the Current Installation.....	24
A.5.3	Returning to an Arbitrary Snapshot	24
A.5.4	Returning to a Factory Snapshot.....	24
A.6	Automatic Recovery	24
B	PO of Supported Servers.....	25
B.1	Low-Capacity Server.....	25
B.1.1	HP ProLiant DL320 Server	25
B.2	High-Capacity Servers	25
B.2.1	HP ProLiant DL360p Server Gen8	25
B.2.2	HP ProLiant DL360 Server Gen9	26

List of Figures

Figure 2-1: HP ProLiant Server Booting.....	10
Figure 2-2: Installation Start Prompt.....	11
Figure 2-3: Installation in Progress.....	11
Figure 2-4: Installation Complete	12
Figure 2-5: First On-board Network Port on HP DL320e Gen 8 Server	13
Figure 2-6: Identifying Network Ports	13
Figure 2-7: CLI Management Interface	15
Figure 2-8: Web Interface.....	16
Figure 3-1: Product Key in Order Confirmation E-mail.....	17
Figure 3-2: Product Key on Software Upgrade Key Status Page	17
Figure 3-3: Software License Activation Tool.....	18
Figure 3-4: Software Upgrade Key Status Page	19
Figure A-1: CLI Management Interface	21
Figure A-2: Main GRUB Menu.....	23
Figure A-3: Rescue Options Menu	23
Figure A-4: System Returning to Snapshot State	23
Figure A-5: Selecting a Snapshot.....	24

List of Tables

Table 1-1: Supported Servers	8
Table 2-1: Default IP Address	14
Table B-1: Supported PO for HP ProLiant DL320e Gen8 Server	25
Table B-2: Sample PO for HP ProLiant DL360p Gen8 Server.....	25
Table B-3: Sample PO for HP ProLiant DL360 Gen9 Server.....	26

Notice

This document describes installation of AudioCodes' Mediant Server Edition Session Border Controller.

Information contained in this document is believed to be accurate and reliable at the time of printing. However, due to ongoing product improvements and revisions, AudioCodes cannot guarantee accuracy of printed material after the Date Published nor can it accept responsibility for errors or omissions. Before consulting this document, check the corresponding Release Notes regarding feature preconditions and/or specific support in this release. In cases where there are discrepancies between this document and the Release Notes, the information in the Release Notes supersedes that in this document. Updates to this document and other documents as well as software files can be downloaded by registered customers at <http://www.audiocodes.com/downloads>.

© Copyright 2016 AudioCodes Ltd. All rights reserved.

This document is subject to change without notice.

Date Published: June-2-2016

Trademarks

AudioCodes, AC, HD VoIP, HD VoIP Sounds Better, IPmedia, Mediant, MediaPack, What's Inside Matters, OSN, SmartTAP, VMAS, VoIPerfect, VoIPerfectHD, Your Gateway To VoIP, 3GX, VocaNOM and CloudBond 365 are trademarks or registered trademarks of AudioCodes Limited. All other products or trademarks are property of their respective owners. Product specifications are subject to change without notice.

WEEE EU Directive

Pursuant to the WEEE EU Directive, electronic and electrical waste must not be disposed of with unsorted waste. Please contact your local recycling authority for disposal of this product.

Customer Support

Customer technical support and services are provided by AudioCodes or by an authorized AudioCodes Service Partner. For more information on how to buy technical support for AudioCodes products and for contact information, please visit our Web site at www.audiocodes.com/support.

Abbreviations and Terminology

Each abbreviation, unless widely used, is spelled out in full when first used.

Related Documentation

Manual Name
Mediant Server & Virtual Editions SBC User's Manual
SIP Release Notes

Document Revision Record

LTRT	Description
10311	Initial document release for Version 7.0.
10312	Installation from DVD removed; NIC specifications updated; hard drive memory updated; supported hardware platforms (PO) updated; identifying incompatible hardware section updated; licensing section updated.
10313	HP ProLiant DL360 G9 server added (high-capacity Mediant SE); setting storage controller in HP Gen9; server BIOS settings; additional BIOS settings for HP DL360 Gen9.
10315	License activation
10317	HP iLO statement added.

Documentation Feedback

AudioCodes continually strives to produce high quality documentation. If you have any comments (suggestions or errors) regarding this document, please fill out the Documentation Feedback form on our Web site at <http://www.audiocodes.com/downloads>. Your valuable feedback is highly appreciated.

1 Introduction

The Mediant Server Edition (SE) Session Border Controller (SBC) is a pure-software server-based product enabling connectivity and security between enterprises' and Service Providers' VoIP networks.

The product provides perimeter defense as a way of protecting companies from malicious VoIP attacks; voice and signaling mediation and normalization for allowing the connection of any PBX and/or IP-PBX to any Service Provider; and service assurance for service quality and manageability.

The product also offers call "survivability", ensuring service continuity to enterprises served by a centralized SIP-based IP-Centrex server or branch offices of distributed enterprises. Survivability functionality enables internal office communication between SIP clients in the case of disconnection from the centralized SIP IP-Centrex server or IP-PBX.

The product features full management through its HTTP/S-based Web server. This user-friendly Web interface allows remote configuration using any standard Web browser (such as Microsoft™ Internet Explorer™).



Note: The scope of this document does not fully cover security aspects for deploying the product in your environment. Security measures should be done in accordance with your organization's security policies. For basic security guidelines, you can refer to *AudioCodes Recommended Security Guidelines* document.

1.1 Product Package

Customers can choose how to obtain the product package according to preference.

Two supply options are available:

- The product is supplied as a link, provided by AudioCodes, to a downloadable "disk image" (ISO file), to be burned by customers onto a CD disk and then installed on the designated server.

To burn the downloaded "disk image" (ISO file) to a CD disk, read the instructions (applicable to Windows 7) in:

<http://windows.microsoft.com/en-us/windows7/burn-a-cd-or-dvd-from-an-iso-file>



Note: You can use other disk burning software as well to burn the "disk image", e.g., ImgBurn (www.imgburn.com).

- The product is also supplied as an installation CD disk, containing the Mediant SE software.

1.2 Installation Prerequisites

1.2.1 Hardware

The Mediant SE SBC software can be installed on two server options:

- Low-capacity server
- High-capacity server

For the low-capacity server, the software must be installed on HP ProLiant DL320e Gen8 servers.

For the high-capacity server, the software must be installed on one of the following servers:

- HP ProLiant DL360p Gen8
- HP ProLiant DL360 Gen9

The table below shows the servers' specifications:

Table 1-1: Supported Servers

Resource	Specification
Server	<ul style="list-style-type: none"> ■ HP ProLiant DL320e Gen8 ■ HP ProLiant DL360p Gen8 ■ HP ProLiant DL360 Gen9
CPU	<ul style="list-style-type: none"> ■ DL320e: Intel Xeon E3-1220v2 (4 cores, 3.1 GHz, 8MB Cache) ■ DL360p Gen8: Intel Xeon 2 x E5-2680v2, (2 x 10 cores, 2.8 GHz, 25MB Cache) ■ DL360 Gen9: Intel Xeon E5-2640v3 (8 cores, 2.6 GHz, 20MB Cache)
Memory	<ul style="list-style-type: none"> ■ DL320e Gen8: 16GB ■ DL360p Gen8: 64GB ■ DL360 Gen9: 32GB
Network Cards	<ul style="list-style-type: none"> ■ Gen8: Dual NC365T ■ DL360 Gen9: 366FLR + 366T
Disk	Mechanical hard drive, 300 GB or more, no RAID DL360 Gen9: SATA Only
Installation From	CD/DVD drive
Installation Interface	VGA Monitor and Keyboard



Note: See under Appendix B on page 25 for the exact Purchase Order (PO) for the HP DL320e server, HP DL360p Gen8 server and the HP DL360 Gen9 server. Other specifications have not been tested and are not supported!

1.2.2 Software

All software components required for installation are provided by AudioCodes.

2 Installing the Product

2.1 Hardware

For details on installing the hardware, see the server-specific documentation provided by your server's vendor.

- For details on installing the supported **HP ProLiant DL320e Gen8** hardware platform, refer to the *HP ProLiant DL320 Gen8 Server User Guide* at www.hp.com.
- For details on installing the supported **HP ProLiant DL360p Gen8** hardware platform, refer to the *HP ProLiant DL360 Gen8 Server User Guide* at www.hp.com.
- For details on installing the supported **HP ProLiant DL360 Gen9** hardware platform, see refer to *HP ProLiant DL360 Gen9 Server User Guide* at www.hp.com.



Note: Connect your VGA monitor and keyboard to the server. These will be used to perform Mediant SE SBC installation and initial IP address configuration.

2.2 Setting Storage Controller in HP DL360 Gen9

The Smart Array RAID (such as P440AR) is not supported by Mediant SE SBC. If a Smart Array is assembled inside the server, it should be pulled out and the storage cables should be connected to the embedded SATA controller (B140i) located on the mother board.



Note: Only SATA HDDs are supported (SAS HDDs are not supported on DL360 GEN9).

2.3 HP iLO Functionality Limitations

For installation of Mediant SE SBC using the local CD/DVD drive, as described in the chapter, if you are connected through HP Integrated Lights-Out (iLO) remote console to the server on which you are intending to install Mediant SE SBC, you **must disconnect** (log off) HP iLO **prior to installation**.



Note: For remote installation using HP iLO remote console, please contact AudioCodes for additional information.

2.4 Server BIOS Settings

The server BIOS settings should be configured for optimal Mediant SE SBC performance:

- **To optimize server BIOS settings:**
 1. Enter the server BIOS (see your server's documentation for details).
 2. Restore the BIOS settings to factory defaults, and then reset the system.
 3. Enter the server BIOS again.

4. Set 'Power Management' to **Maximum Performance** (usually under 'Power' options).
5. Enable 'Intel Turbo Boost' (usually under the 'Processor' options).
6. Disable 'Hyper-Threading' (usually under 'Processor' options).
7. Enable 'Intel Virtualization Technology VT-d' and 'VT-x' (usually under 'Processor' options).

2.4.1 Additional BIOS Settings for HP DL360 Gen9

The default boot mode on DL360 Gen9 is UEFI, which is currently not supported by Mediant SE SBC installation. Therefore, the BOOT mode must be changed to "Legacy". This is done in the BIOS under **BIOS/Platform Configuration (RBSU) -> Boot Options -> Boot Mode -> Legacy BIOS Mode**.

2.5 Software

Mediant SE SBC installation involves:

1. Installing the Mediant SE SBC – see Section 2.5.1.
2. Connecting the Mediant SE SBC to the IP Network – see Section 2.5.2.
3. Reconfiguring the Default IP Address to Match Customer Network Settings – see Section 2.5.3.

2.5.1 Installing the Mediant SE SBC

Installing the Mediant SE SBC involves booting the server after inserting the CD and following the installation instructions.

➤ **To install the Mediant SE SBC:**

1. Insert the installation CD into the CD/DVD drive.
2. Boot the server from the CD by using (for example) the 'Power Off' button. Some servers may prompt users to 'Press any key' (see the server documentation for details).

The server boots from the CD (see Figure 2-1) and the Mediant SE SBC Installation Menu is displayed (see Figure 2-2).

Figure 2-1: HP ProLiant Server Booting



Figure 2-2: Installation Start Prompt

```

MEDIANT SBC
=====
Mediant SBC
ver 6.80A.000.002
=====
- To start installation, press <ENTER> key.
- To start installation from RS-232 serial console, type rs232 <ENTER>.
- To boot from local disk, type local <ENTER>.
boot: _

```

3. Press the ENTER key; installation commences; a bar shows installation progress.

Figure 2-3: Installation in Progress

```

Welcome to Mediant SBC

Linux OS Installation
-----
31%
Packages completed: 32 of 201

<Tab>/<Alt-Tab> between elements | <Space> selects | <F12> next screen

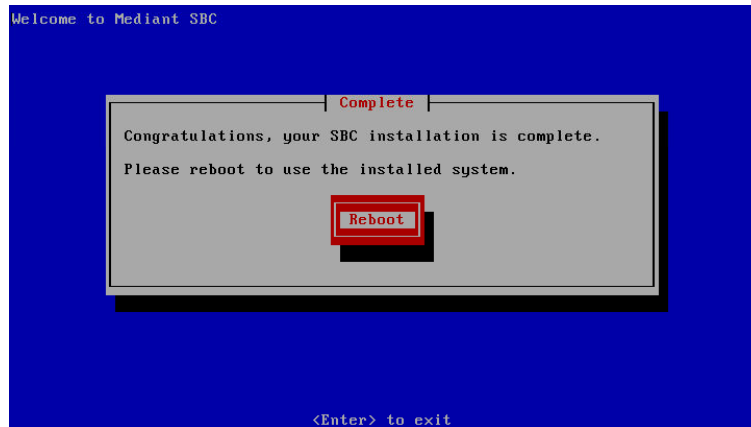
```



Note: If installation fails and a "no hard disc found" error is indicated, disable the RAID controller and restart the installation. For example, on the HP DL320e server, press **F9** during the bootup to open the Setup Utility: Go to System Options > SATA Controller Options > Embedded SATA Configuration and choose the **Enable SATA Legacy Support** option.

4. Wait for the 'Complete' prompt, notifying you when installation is complete, to be displayed. Installation takes approximately 10 minutes.

Figure 2-4: Installation Complete



5. Press ENTER to reboot the server; after rebooting, the CD is ejected and the server boots from the local disk to the newly installed Mediant SE SBC software.



Note: If, for some reason, the CD is not ejected and the server boots to the installation prompt again, eject the disk manually and reboot the server.

2.5.2 Connecting Mediant SE SBC to the IP Network

To connect Mediant SE SBC to the IP Network, connect an Ethernet cable to the first on-board Network Port on the server's rear panel.

Figure 2-5: First On-board Network Port on HP DL320e Gen 8 Server



Note: The Mediant SE SBC orders available network ports in two groups: the first group containing on-board ports (included in basic server assembly) and the second group containing ports on the add-on PCIe cards. Ports within each group are sorted alphabetically by their MAC addresses; which typically matches corresponding labels imprinted on the server rear's panel – NIC1, NIC2. If labels are missing or duplicated, see the section below for identifying network ports.

2.5.2.1 Identifying Network Ports

Use the `show voip ports` CLI command to identify network ports (1, 2, 3, etc.) by their MAC address and port status (up/down).

➤ **To identify network ports:**

- Disconnect Ethernet cables from all network ports.
- Connect the first port via the Ethernet cable to a switch or router. Verify that port status is "up", typically indicated by green LEDs on the port itself and/or by the port status on the connected switch/router. Run the `show voip ports` command and identify the corresponding port number, by noting the port with Link Status 'UP'.
- Repeat the sequence for the rest of the ports.

Figure 2-6: Identifying Network Ports

```
Mediant SW# show voip ports
```

Port Num	Port Name	MAC Address	Link Status
1	GE_1	00:1e:67:11:7c:29	UP
2	GE_2	68:05:ca:03:6b:4e	DOWN
3	GE_3	68:05:ca:03:6b:98	DOWN
4	GE_4	00:1e:67:11:7c:28	DOWN

2.5.2.2 Identifying Incompatible Hardware Components

During installation of the Mediant SE SBC from a CD, if an incompatible hardware component is detected (e.g., a network card), a warning message is displayed. You can abort installation or continue.

After the installation is complete, you can view details of the hardware platform by using the **show system hardware** CLI command. Incompatible components are indicated with an asterisk (*), as shown in the example below of an incompatible NIC:

```
# show system hardware
CPU: Intel(R) Xeon(R) CPU E5-2680 v2 @ 2.80GHz, total 20 cores
Memory: total RAM: 65536 MB
Chassis: ProLiant DL360p Gen8
Network:
    Broadcom Corporation NetXtreme BCM5719 Gigabit Ethernet PCIe
    Broadcom Corporation NetXtreme BCM5719 Gigabit Ethernet PCIe
    Broadcom Corporation NetXtreme BCM5719 Gigabit Ethernet PCIe
    Broadcom Corporation NetXtreme BCM5719 Gigabit Ethernet PCIe
    Intel Corporation 82580 Gigabit Network Connection (rev 01)
    Intel Corporation 82580 Gigabit Network Connection (rev 01)
    Intel Corporation 82580 Gigabit Network Connection (rev 01)
    Intel Corporation 82580 Gigabit Network Connection (rev 01)
    *Realtek Semiconductor Co.,Ltd. RTL-8169 Gigabit Ethernet (rev 10)
    *Realtek Semiconductor Co.,Ltd. RTL-8169 Gigabit Ethernet (rev 10)
```

Notes:

- Incompatible hardware should be avoided and replaced with compatible hardware as listed in the recommended specification under Section 1.2.1 on page 8.
- It is recommended that you use the Intel® chipset for ports allocated for media. To verify which ports are using the Intel chipset, you can run the `show voip ports` command in the CLI. Ports using the Intel chipset are displayed with "igb" in the 'Driver Info' field, as shown in the example below:



Mediant SW# show voip ports

Port Num	Port Name	MAC Address	Speed	Duplexity	Link Status	Native VLAN	Driver Info.
1	GE_1	2c:76:8a:52:9c:1c	100Mbps	FULL	UP	1	tg3
2	GE_2	2c:76:8a:52:9c:1d			DOWN	2	tg3
3	GE_3	2c:76:8a:52:9c:1e			DOWN	3	tg3
4	GE_4	2c:76:8a:52:9c:1f			DOWN	4	tg3
5	GE_5	f4:ce:46:a5:24:68			DOWN	5	igb rx&tx-zc
6	GE_6	f4:ce:46:a5:24:69			DOWN	1	igb rx&tx-zc
7	GE_7	f4:ce:46:a5:24:6a			DOWN	7	igb rx&tx-zc
8	GE_8	f4:ce:46:a5:24:6b			DOWN	8	igb rx&tx-zc

2.5.3 Reconfiguring Default IP Address to Match Customer Network Settings

After the installation, the Mediant SE SBC is assigned with a default IP address that will most likely be inaccessible from the customer's network.

Table 2-1: Default IP Address

Parameter	Value
IP Address	192.168.0.1
Subnet Mask	255.255.255.0

Reconfigure the IP address in order to connect to the Mediant SE SBC's Web-based management tool (hereafter referred to as 'Web interface').

The procedure below describes how to change the default IP address using the CLI. The procedure uses the regular CLI commands. Alternatively, you can use the CLI Wizard utility to set up the Mediant SE SBC with the initial OAMP settings. The utility provides a fast-and-easy method for initial configuration of Mediant SE SBC through CLI. For more information, refer to the *CLI Wizard User's Guide*.

➤ **To reconfigure the IP address using CLI:**

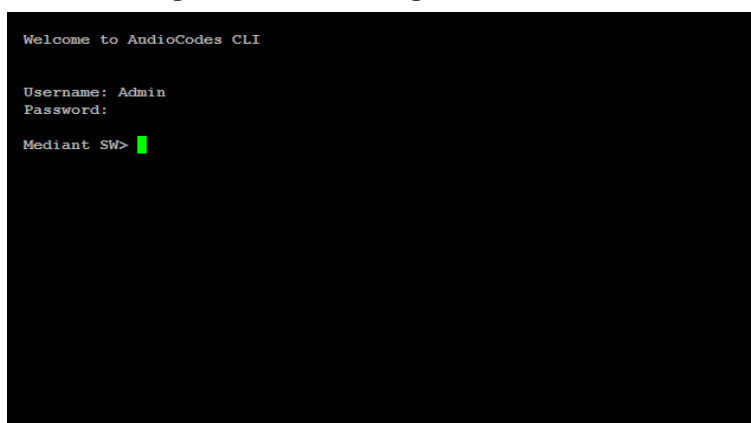
1. Use the VGA monitor and keyboard to connect to the CLI management interface.
2. At the prompt, type the username (default is **Admin** - case sensitive), and then press ENTER:

```
Username: Admin
```

3. At the prompt, type the password (default is **Admin** - case sensitive), and then press ENTER:

```
Password: Admin
```

Figure 2-7: CLI Management Interface



```
Welcome to AndioCodes CLI

Username: Admin
Password:
Mediant SW> █
```

4. At the prompt, type **enable** and press ENTER:

```
Mediant SW> enable
```
5. At the prompt, type the password again and press ENTER:

```
Password: Admin
```
6. At the prompt, type the following commands to access the network interface configuration:

```
Mediant SW# configure voip
Mediant SW(config-voip)# interface network-if 0
Mediant SW(network-if-0)#
```



Note: Use the Tab key to auto-complete partially entered commands.

7. At the prompt, type the following commands to configure the IP address, prefix length and default gateway:

```
Mediant SW(network-if-0)# ip-address 10.4.212.155
Mediant SW(network-if-0)# prefix-length 16
Mediant SW(network-if-0)# gateway 10.4.0.1
```
8. At the prompt, type **exit** to complete the **network-if** configuration:

```
Mediant SW(network-if-0)# exit
```

9. If Mediant SE SBC is connected to the IP network that uses VLAN ID, type the following commands to configure it (otherwise skip to step 10):

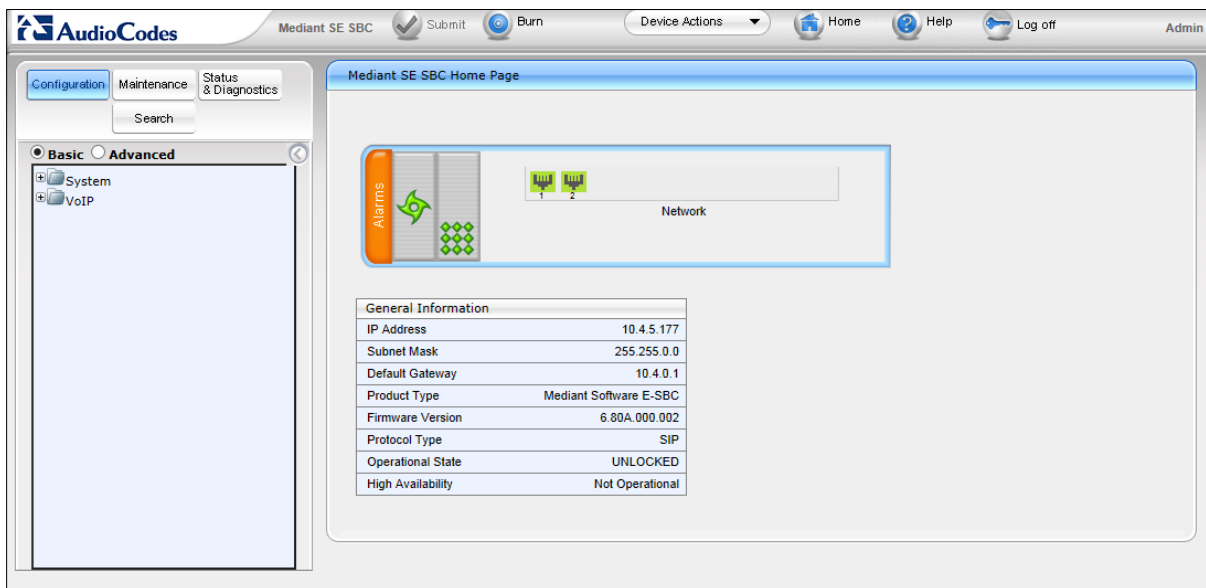
```
Mediant SW(config-voip)# interface network-dev 0
Mediant SW(network-dev-0)# vlan-id 10
Mediant SW(network-dev-0)# exit
```
10. At the prompt, type **exit** to complete the configuration:

```
Mediant SW(config-voip)# exit
```
11. At the prompt, make sure that port #1 is connected (Link is UP) using the **show voip ports** CLI command as described in Section 2.5.2.1 on page 13. Port #1 is mapped to network-if-0 by default.
12. At the prompt, type **reload now** to reset the product and activate the new configuration:

```
Mediant SW# reload now
```

After the Mediant SE SBC restarts, connect to its Web interface to continue the provisioning. See the *Mediant Server & Virtual Editions SBC User's Manual* for details.

Figure 2-8: Web Interface



2.5.4 Installing an HA System

Users can configure two products to work in a High Availability (HA) configuration.

- **To configure an HA system:**
 1. Reconfigure a temporary IP address for each, as described in Section 2.5.2.
 2. To support HA functionality, the devices must be installed with the an HA-enabled license. Follow the instructions described in Section 3 on page 17 for licensing each device in the HA system.
 3. Follow the instructions described under the section 'High Availability System' in the *Mediant Server & Virtual Editions SBC User's Manual* document to set network topology correctly, and configure each accordingly using the Web interface.

3 Licensing the Product

After you have successfully completed software installation, you need to obtain and install the License Key file to enable the call capacity and software features that you ordered with the product, as described in the following subsections.

3.1 Entering the Product Key

The Product Key identifies a specific purchase of your device installation for the purpose of subsequent communication with AudioCodes (for example, for support and software upgrades). The Product Key is provided in the Order Confirmation e-mail sent to you by AudioCodes upon your purchase, as shown in the example below:

Figure 3-1: Product Key in Order Confirmation E-mail



Note:

- Make sure you write down the Product Key and store it in a safe place where it can later be retrieved, if necessary, for re-installation.
- For 1+1 High-Availability orders, you are provided with two Product Keys, one for each unit.

You need to configure your device with this Product Key through the Web interface, as described below.

➤ **To enter the Product Key:**

1. Open the Software Upgrade Key Status page (**Maintenance** tab > **Software Update** menu > **Software Upgrade Key**).

Figure 3-2: Product Key on Software Upgrade Key Status Page

The screenshot shows a web interface with a text input field labeled 'Product Key' and a button labeled 'Change Product Key'.

2. In the 'Product Key' field, enter the Product Key.
3. Click the **Change Product Key** button.

You can view the Product Key on the Device Information page (**Status & Diagnostics** tab > **System Status** menu > **Device Information**).

3.2 Obtaining and Activating the License Key

The procedure below describes how to obtain and activate your License Key from AudioCodes.

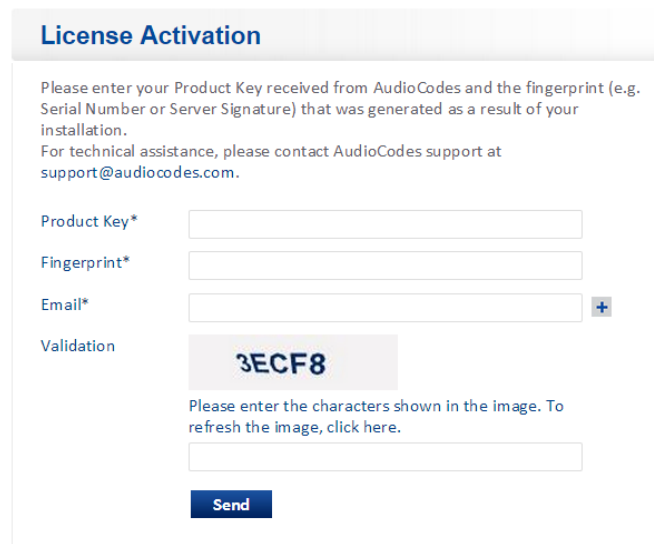


Note: License activation is intended **only** for first-time software activation upon product purchase (or if your License Key is "lost" due to whatever reason). For subsequent software feature upgrades, the License Key file is e-mailed to you when your Purchase Order is processed.

➤ **To obtain and activate the License Key:**

1. Make a note of the device's Serial Number. You can view the Serial Number in the 'Serial Number' field on the Device Information page (**Status & Diagnostics** tab > **System Status** menu > **Device Information**) in the Web interface.
2. Activate your device through AudioCodes License Activation tool:
 - a. Go to AudioCodes' Web-based License Activation tool at <http://www.audiocodes.com/swactivation>:

Figure 3-3: Software License Activation Tool



License Activation

Please enter your Product Key received from AudioCodes and the fingerprint (e.g. Serial Number or Server Signature) that was generated as a result of your installation.
For technical assistance, please contact AudioCodes support at support@audiocodes.com.

Product Key*

Fingerprint*

Email* +

Validation

3ECF8

Please enter the characters shown in the image. To refresh the image, click [here](#).

Send

- b. Enter the following information:
 - ◆ **Product Key:** The Product Key identifies your specific device purchase, as explained in Section 3.1 on page 17.



Note: For 1+1 High-Availability orders, you are provided with two Product Keys, one for each unit. In such cases, you need to perform license activation twice in order to obtain License Keys for both units.

- ◆ **Fingerprint:** The fingerprint is the device's Serial Number. The Serial Number uniquely identifies the software installation (see Step 1).
 - ◆ **Email:** Provide one or more e-mail addresses to where you want the License Key to be sent.
 - c. Click **Send**; once AudioCodes processes your activation, you will receive an e-mail notification with the License Key file attached.

3. Verify that the serial number in the received License Key file is correct and reflects the Serial Number of your device. To do this, open the file with any text-based program (e.g., Notepad). The serial number is displayed on the "S/N" line.



Warning: Do not modify the contents of the Software License Key file.

3.3 Installing the License Key

The procedure below describes how to install the received License Key.

➤ **To install the License Key:**

1. Open the Software Upgrade Key Status page (**Maintenance** tab > **Software Update** menu > **Software Upgrade Key**):

Figure 3-4: Software Upgrade Key Status Page

2. Back up the License Key currently installed on the product, as a precaution. You can reload this backup to restore the product's original capabilities if the key does not comply with your requirements.
 - a. In the 'Current Key' field, select the entire text string and copy it to any standard text file (e.g., Notepad).
 - b. Save the text file with any file name and file extension (e.g., key.txt) to a folder on your computer.

3. Open the License Key file using a text-based program such as Notepad.
4. Copy-and-paste the string from the file to the 'Add a Software Upgrade Key' field.
5. Click the **Add Key** button; the key is installed on the product and displayed in the 'Current Key' field.
6. Verify that the key was successfully installed. On the Software Upgrade Key Status page, check that the listed features and capabilities activated by the installed key match those that were ordered.
7. Reset the product; the new capabilities and resources enabled by the key are activated.

A Rescue Options

The Mediant SE SBC features a System Snapshots mechanism that provides the capability of returning the system to a previous state. The mechanism may be used as a rescue option if a system malfunction occurs.

A.1 Taking a Snapshot

Taking a System Snapshot captures a complete state of the Mediant SE SBC, including:

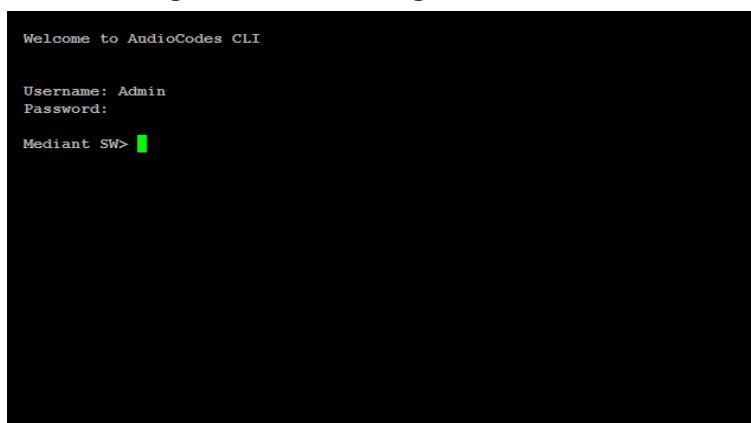
- installed Mediant SE SBC software
- the current configuration
- auxiliary files
- the Software License Key

The first 'factory' snapshot is automatically taken when initial installation is performed. Additional snapshots (up to 10) may be taken. The Mediant SE SBC can be returned to a snapshot, as described below.

➤ **To take a snapshot using the CLI:**

1. Connect to the CLI interface as described under Section 2.5.2.

Figure A-1: CLI Management Interface

A screenshot of a terminal window with a black background and white text. The text reads: "Welcome to AudioCodes CLI", "Username: Admin", "Password:", and "Mediant SW>". A green cursor is positioned after the prompt "Mediant SW>".

```
Welcome to AudioCodes CLI
Username: Admin
Password:
Mediant SW>
```

2. At the prompt, type **enable** and press ENTER:
Mediant SW> **enable**
3. At the prompt, type the password and press ENTER:
Password: **Admin**
4. At the prompt, save the current configuration (burn) before creating a snapshot:
Mediant SW# **write**
5. Type the following commands to take a snapshot:
Mediant SW# **configure system**
Mediant SW# **startup-n-recovery**
Mediant SW (startup-n-recovery)# **create-system-snapshot <name>**

A.2 Viewing Available Snapshots

Currently available system snapshots can be viewed by using the `show-system-snapshots` command. The 'default' snapshot is indicated by asterisk.

```
Mediant SW(startup-n-recovery)# show-system-snapshots
first-install-2010-01-01_03-18-29
pre-production-6.70.037.010-2010-01-08_00-39-58
*production-6.70.037.010-2010-01-08_00-41-30
```

A.3 Changing the Default Snapshot

The 'default' snapshot indicates a restore point that is used by Automatic Recovery in the case of software malfunction (see Section A.6) and/or Manual Recovery (see Section A.5). The last user-created snapshot is automatically set as 'default' though it can be changed using the `set-default-snapshot` command.

```
Mediant SW(startup-n-recovery)# set-default-snapshot pre-
production-6.70.037.010-2010-01-08_00-40-27
```

A.4 Deleting a Snapshot

To delete a snapshot, use the `delete-system-snapshot` command:

```
Mediant SW(startup-n-recovery)# delete-system-snapshot pre-
production-6.70.037.010-2010-01-08_00-39-58
```

A.5 Manual Recovery

Manual recovery is performed on user request. When the Mediant SE SBC reboots, a GRUB menu is displayed that allows users to select one of the following rescue options:

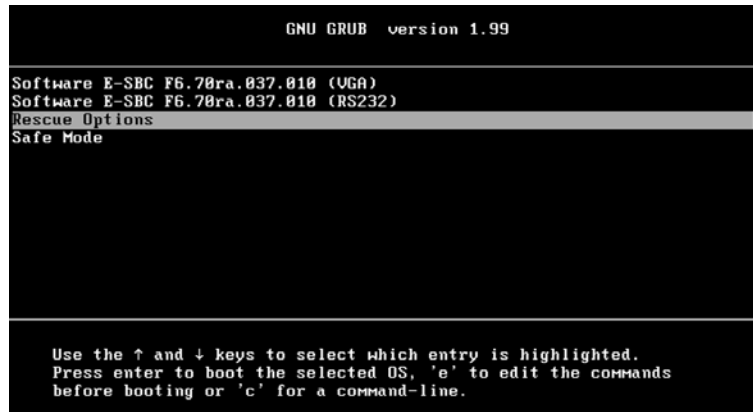
- Return to default snapshot
- Fix current installation
- Browse available system snapshots
- Return to factory snapshot (after install from CD)

A.5.1 Returning to the Default Snapshot

➤ To return to the default snapshot:

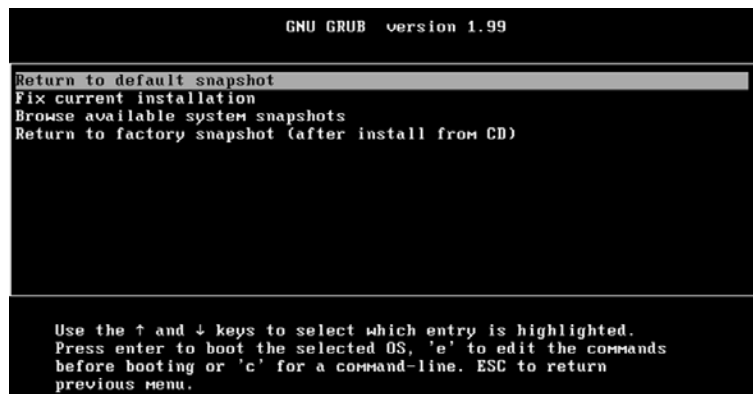
1. Reboot the server.
2. In the GRUB menu that's displayed for 5 seconds during the server start-up, press the Down ↓ key, select **Rescue option**, and press **Enter**.

Figure A-2: Main GRUB Menu



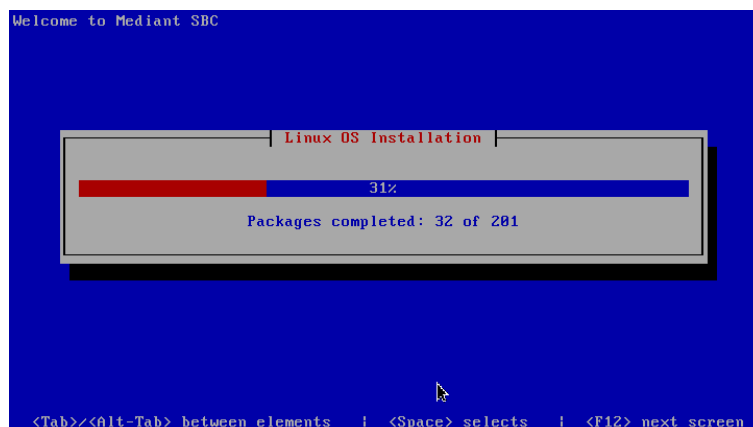
3. In the Rescue Options menu, select **Return to default snapshot** and press **Enter**.

Figure A-3: Rescue Options Menu



The system returns to the default snapshot, restoring the software version and the full configuration (see Section A.3). The process can take up to 10 minutes to complete.

Figure A-4: System Returning to Snapshot State



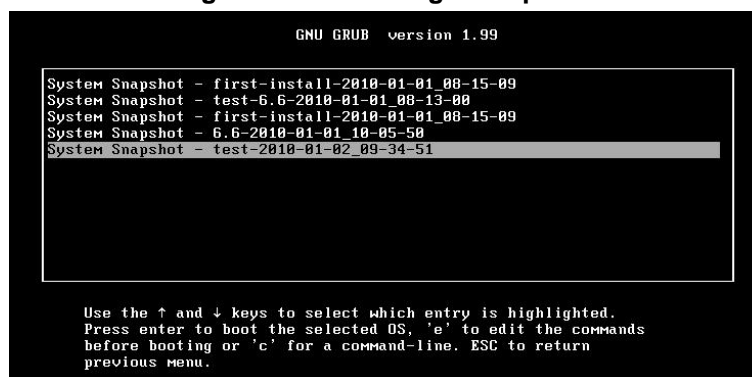
A.5.2 Fixing the Current Installation

- **To fix the current installation:**
 - In the GRUB menu, select **Fix current installation** and press **Enter**; the system is repaired while the currently installed software version and its configuration are preserved. The process can take up to 10 minutes to complete.

A.5.3 Returning to an Arbitrary Snapshot

- **To return to an arbitrary (non-default) system snapshot:**
 1. In the GRUB menu, select **Browse available system snapshots** and press **Enter**; you're prompted to select a snapshot.

Figure A-5: Selecting a Snapshot



2. Select a snapshot and press **Enter**; the system returns to the selected snapshot, restores the software version and the full configuration. The process may take up to 10 minutes to complete.

A.5.4 Returning to a Factory Snapshot

- **To return to a factory snapshot (after install from CD):**
 - In the GRUB menu, select **Return to factory snapshot (after install from CD)** and press **Enter**; the system returns to the first snapshot automatically taken when initial installation from CD was performed. The process can take up to 10 minutes to complete.

A.6 Automatic Recovery

The Mediant SE SBC activates Automatic Recovery when it encounters a severe software malfunction that prevents it from successfully booting for three subsequent attempts. Automatic Recovery returns the system to the 'default' snapshot and may take up to 10 minutes to complete.

B PO of Supported Servers

B.1 Low-Capacity Server

B.1.1 HP ProLiant DL320 Server

The table below provides the supported Purchase Order (PO) for the HP ProLiant DL320 server, which has been qualified for the Mediant SE SBC Low-capacity server.

Table B-1: Supported PO for HP ProLiant DL320e Gen8 Server

Resource	Qty	Description
675597-B21	1	HP DL320e Gen8 Hot Plug 4LFF CTO Server
682787-L21	1	HP DL320eGen8 E3-1220v2 FIO Kit
669324-B21	2	HP 8GB 2Rx8 PC3-12800E-11 Kit
658071-B21	1	HP 500GB 6G SATA 7.2k 3.5in SC MDL HDD
652241-B21	1	HP 9.5mm SATA DVD RW Jb Kit
593722-B21	2	HP NC365T 4-port Ethernet Server Adapter
674845-B21	1	HP Dedicated iLO Management Port Kit
663202-B21	1	HP 1U LFF BB Gen8 Rail Kit
675450-B21	1	HP 350W 1U FIO Pwr Supply Kit

B.2 High-Capacity Servers

B.2.1 HP ProLiant DL360p Server Gen8

The table below provides the supported Purchase Order (PO) for the HP ProLiant DL360p Gen8 server, which has been qualified for the Mediant SE SBC High-capacity server.

Table B-2: Sample PO for HP ProLiant DL360p Gen8 Server

Resource	Qty	Description
654081-B21	1	HP DL360p Gen8 8-SFF CTO Server
712506-L21	1	HP DL360p Gen8 E5-2680v2SDHS FIO Kit
712506-B21	1	HP DL360p Gen8 E5-2680v2SDHS Kit
731761-B21	8	HP 8GB 1Rx4 PC3-14900R-13 Kit
652564-B21	1	HP 300GB 6G SAS 10K 2.5in SC ENT HDD
652241-B21	1	HP 9.5mm SATA DVD RW Jb Kit
684217-B21	1	HP 1GbE 4-port 366FLR Adapter FIO Kit
734807-B21	1	HP 1U SFF Easy Install Rail Kit
593722-B21	2	HP NC365T 4-port Ethernet Server Adapter
656363-B21	2	HP 750W CS Plat PL Ht Plg Pwr Supply Kit

B.2.2 HP ProLiant DL360 Server Gen9

The table below provides the supported Purchase Order (PO) for the HP ProLiant DL360 Gen9 server, which has been qualified for the Mediant SE SBC Low-capacity server.

Table B-3: Sample PO for HP ProLiant DL360 Gen9 Server

Resource	Qty	Description
755258-B21	1	HP DL360 Gen9 8SFF CTO Server
755386-L21	1	HP DL360 Gen9 E5-2640v3 FIO Kit
726718-B21	4	HP 8GB 1Rx4 PC4-2133P-R Kit
655708-B21	1	HP 500GB 6G SATA 7.2k 2.5in SC MDL HDD
764632-B21	1	HP DL360 Gen9 SFF DVD-RW/USB Kit
766207-B21	1	HP DL360 Gen9 SFF Embed SATA Cable
665240-B21	1	HP Ethernet 1Gb 4-port 366FLR Adapter
811546-B21	1	HP Ethernet 1Gb 4-port 366T Adapter
734807-B21	1	HP 1U SFF Easy Install Rail Kit
720478-B21	1	HP 500W FS Plat Ht Plg Pwr Supply Kit

This page is intentionally left blank.

International Headquarters

1 Hayarden Street,
Airport City
Lod 7019900, Israel
Tel: +972-3-976-4000
Fax: +972-3-976-4040

AudioCodes Inc.

27 World's Fair Drive,
Somerset, NJ 08873
Tel: +1-732-469-0880
Fax: +1-732-469-2298

Contact us: www.audiocodes.com/info

Website: www.audiocodes.com



Document #: LTRT-10317