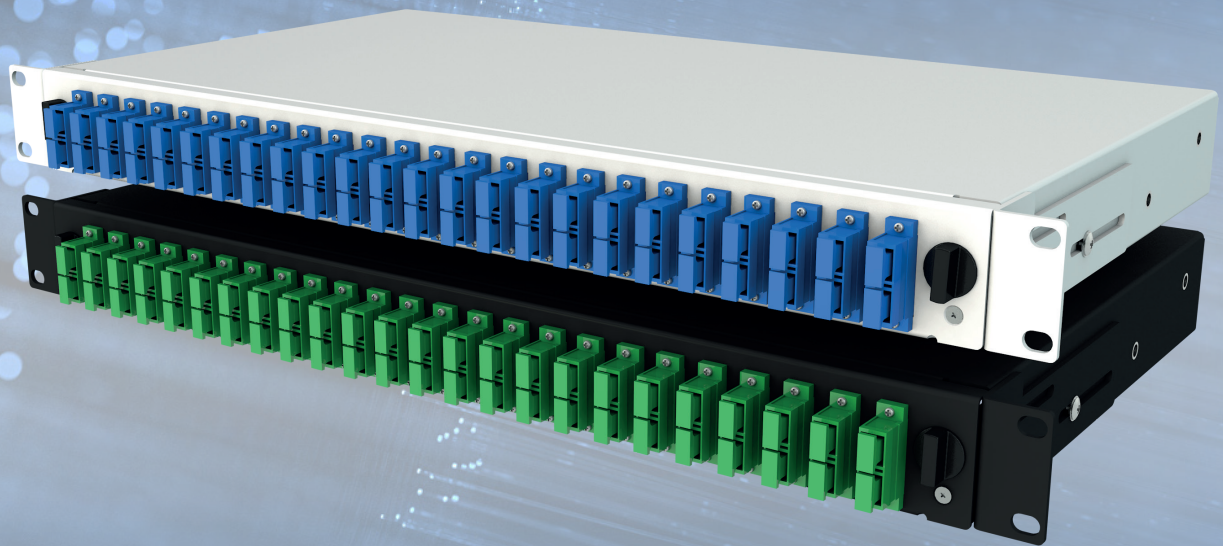


alfafonet[®]
Complete Connectivity Solutions




**OPTISLIDE 1RU
FIBER OPTIC
PATCH/SPLICE PANEL**

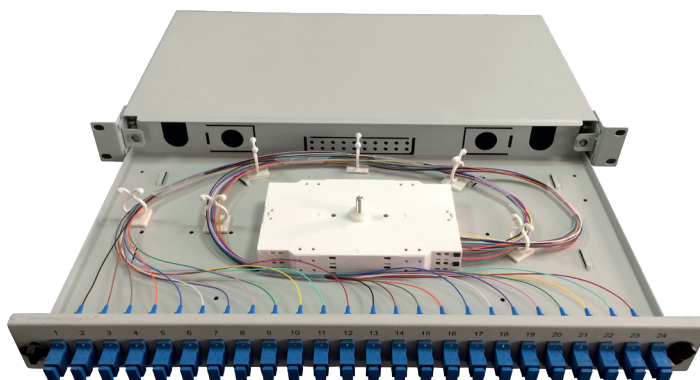
TERMINATION PANELS
OptiSlide


OPTISLIDE 1RU FIBER OPTIC PATCH/SPLICE PANEL


	Product Family
	Mechanical Slide


<input type="checkbox"/>	Standarts
<input type="checkbox"/>	19"
<input type="checkbox"/>	1 Rack Unit

Protection Rating	
	IP 10



	H	44 mm
	W	434 mm
	D	243 mm

Available Colors:	
	Light Grey (RAL7035)
	Black (RAL9005)

Weight		
	Net	2,3 kg
	Gross	2,530 kg

PRODUCT OVERVIEW

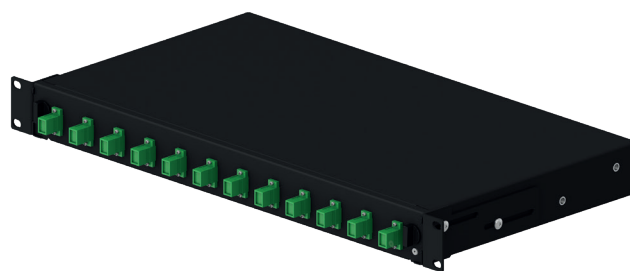
The OptiSlide 1RU sliding patch panel system in its basic form is supplied with the panels unloaded without adaptors ready for you to install the adaptor of your choice. The panel can also be pre-loaded complete with the required adaptor and simple splice management kit, or preloaded with pigtails to meet your project needs. The tray is locked in place with two simple to operate via plastic quarter turn lock when fully extended the tray is designed to lower to 45°, or move the tray to the side and it will lock to lower only 10°. This provides the perfect working platform for simple installation or easy maintenance and access even after the panel is installed in the rack. This solution allows for easy access to the front patch cords as well as the splice trays and pigtails after being pulled out. Standard panels are available empty for complete field configuration, half-loaded with adaptor plates for field termination and cable assembly installation, or stubbed with a factory-installed cable assembly of a user specified length.

Features

- › Up to 48 fibres in 1RU
- › Printed port numbers on the front plate
- › Available with different front plates (sold separately to reduce stock value) for all type of connectors
- › Adjustable depth in rack
- › Rear cable entry options
- › Rear Assembly option to Rack
- › Light in weight and robust structure
- › Different Splice tray assembly option
- › Removable Adapter Plates

Specifications

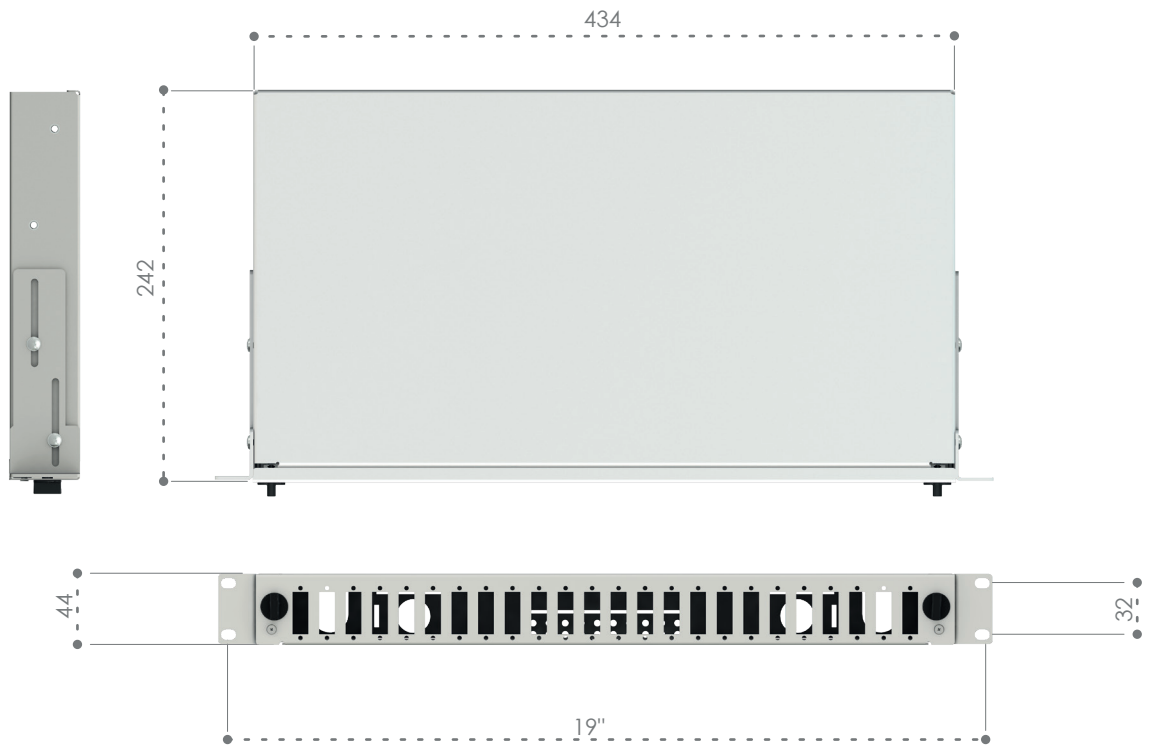
- › Cold Rolled Steel Construction
- › Durable textured powder coat finish available in black (RAL9005) or Light Grey (RAL7035)
- › Universal 19" rack compatibility
- › Special Quarter Turn lock for tray
- › Cable Entry 21mm (2pcs),
- › Cable Entry 23mm (2pcs)
- › Compliant to RoHS



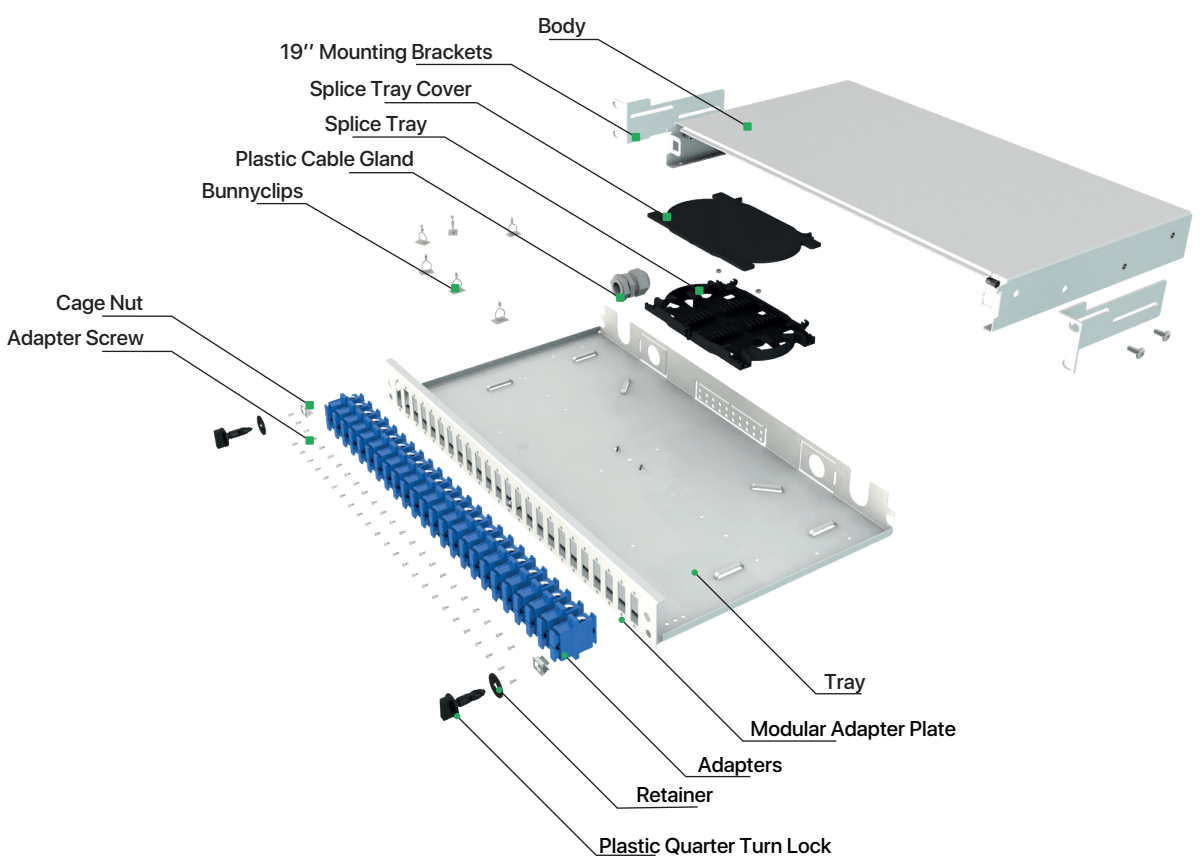
Scan QR Code
View Brochure*

*Brochure contains key features, optional parts, packing details, standart accessories.

OPTISLIDE 1RU FIBER OPTIC PATCH/SPLICE PANEL



Exploded View



OPTISLIDE 1RU FIBER OPTIC PATCH/SPLICE PANEL

Ordering Options

	12 ST or 12 FC (D-hole) 1RU Front Plate	102001.01-CC
	24 ST or 24 FC (D-hole) 1RU Front Plate	102001.02-CC
	24 LC Duplex or 24 E2000 Simplex or 24 SC Simplex 1RU Front Plate	102001.03-CC
	24 MTP or 24 MPO Adapter Vertical 1RU Front Plate	102001.04-CC
	24 LC Duplex Square-Cut 1RU Front Plate	102001.05-CC
	12 LC Duplex Square-Cut 1RU Front Plate	102001.06-CC
	6 SC Duplex or 6 LC Quad Vertical 1RU Front Plate	102001.07-CC
	12 SC Duplex or 12 LC Quad Horizontally Shifted 1RU Front Plate	102001.08-CC
	12 SC Duplex or 12 LC Quad Vertical 1RU Front Plate	102001.09-CC
	6 SC Duplex or 6 LC Quad Horizontal 1RU Front Plate	102001.10-CC
	24 SC Duplex or 24 LC Quad Vertical 1RU Front Plate	102001.11-CC
	24 LC Duplex or 24 E2000 Simplex or 24 SC Simplex Horizontally Shifted 1RU Front Plate	102001.12-CC
	12 Keystone + 12 SC Duplex Vertical (LC Quad) 1RU Front Plate	102001.13-CC
	12 Keystone + 12 LC Duplex or 12 E2000 Simplex or 12 SC Simplex 1RU Front Plate	102001.14-CC
	12 LC Duplex or 12 E2000 Simplex or 12 SC Simplex 1RU Front Plate	102001.15-CC
	6 LC Duplex or 6 E2000 Simplex or 6 SC Simplex 1RU Front Plate	102001.16-CC
	12 E2000 Duplex Compact (RdM) 1RU Front Plate	102001.17-CC
	48 ST or 48 FC (D-hole) 1RU Front Plate	102001.18-CC
	1RU Dummy Plate	102001.19-CC
	24 E2000 Duplex Compact(RdM) Flagless 1RU Front Plate	102001.20-CC
	12 E2000 Duplex Compact(RdM) Screwable 1RU Front Plate	102001.21-CC
	24 E2000 Duplex Compact(RdM) Screwable 1RU Front Plate	102001.22-CC
	Freedom Base Plate for Screwable	102001.23-CC
	6SC Duplex Module(Screwable)	102001.23.01A-CC
	6SC Simplex Module(Screwable)	102001.23.01B-CC
	6ST or 6FC (D-hole) Module(Screwable)	102001.23.01C-CC
	Blank Module(Screwable)	102001.23.01D-CC
	4 Keystone Module(Screwable)	102001.23.01F-CC
	Freedom Base Plate for Snap Latch	102001.24-CC
	6SC Duplex Module(Snap Latch)	102001.24.01A-CC
	6SC Simplex Module(Snap Latch)	102001.24.01B-CC
	6ST or 6FC (D-hole) Module(Snap Latch)	102001.24.01C-CC
	Blank Module(Snap Latch)	102001.24.01D-CC
	4 Keystone Module(Snap Latch)	102001.24.01F-CC
	12 LC Duplex or 12 LC Quad or 12 SC Simplex Horizontal 1RU Front Plate	102001.25-CC
	24 LC Duplex or 24 LC Quad or 24 SC Simplex Horizontal 1RU Front Plate	102001.26-CC
	6 LC Duplex or 6 LC Quad or 6 SC Simplex Horizontal 1RU Front Plate	102001.27-CC
	Freedom Base Plate for Snap Latch for Triple Module	102001.28-CC
	8SC Duplex or 8 LC Quad Module(Snap Latch)	102001.28.01A-CC
	8SC Simplex or 8 LC Duplex Module(Snap Latch)	102001.28.01B-CC
	8ST or 8FC (D-hole) Module(Snap Latch)	102001.28.01C-CC
	4 Keystone Module(Snap Latch)	102001.28.01D-CC
	4 SC Duplex or 4 LC Quad Angled Module(Snap Latch)	102001.28.01E-CC
	8 SC Simplex or 8 LC Duplex Horizontal Module(Snap Latch)	102001.28.01F-CC
	4 SC Simplex or 4 LC Duplex Horizontal Module(Snap Latch)	102001.28.01G-CC
	Blank Module(Snap Latch)	102001.28.01H-CC

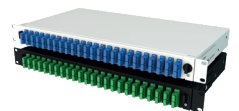
Ordering Guide

Ordering Option	Color	Splice Cassette (details pg.7)	Splice Cassette Quantity	Adapter Type (details pg.8)	Structure	Mode	Pigtail	Additional Options (details pg.6)							
102001 In Ordering Option Article	Light Grey LG	Empty	0	Empty	0	Empty	0	Empty	0						
	Black BL	ALF-CMPC	1	One	1	LC	1	Simplex	1	Single / PC	1	Inside Plastic Bag 1 Color	1	Screwed Rear to Front	1
		ALF-TR	2	Two	2	SC	2	Duplex	2	Single / APC	2	Inside Plastic Bag 6 Color	2	Screwed Front to Rear	2
		ALF-A	3	Three	3	ST	3	Quad	3	Multimode / OM1	3	Inside Plastic Bag 12 Color	3	Screwed with Nut	3
		ALF-B	4	Four	4	FC	4		4	Multimode / OM2	4	Fully Assembled 1 Color	4		
		ALF-C	5			E2000	5		5	Multimode / OM3	5	Fully Assembled 6 Color	5		
		ALF-D	6			LC Duplex Square	6		6	Multimode / OM4	6	Fully Assembled 12 Color	6		
									7	Multimode / OM5	7				

102001.01-CC* / 000000

102001-CC*

OptiSlide 1RU Fibre Optic Termination Panel, 19"- Sliding Mechanically, without front plate, Colour: Black-RAL9005 or Light Grey-RAL7035, (1pcs. PG13.5 Plastic Gland, 1pcs. PG16 Plastic Gland, 6pcs. Adhesive Bunny Clips, 4pcs. 2,5mmX10 Cable Ties, 2pcs. Plastic Quarter turn lock, 6pcs. M3 Fixing Screw)

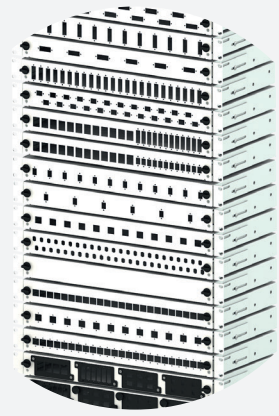
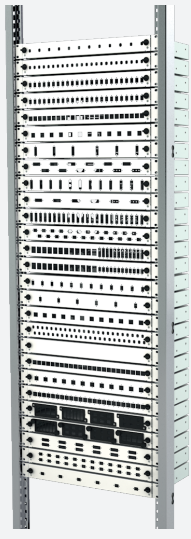


Scan QR Code
View Brochure

*CC=LG for Light Grey RAL 7035 & BL for Black RAL 9005 for customers to define while ordering.
*Brochure contains key features, optional part packing details, standard accessories.

OPTISLIDE 1RU FIBER OPTIC PATCH/SPLICE PANEL

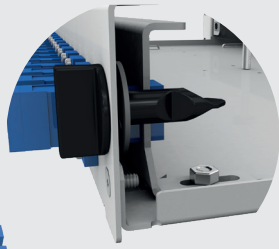
Key Features



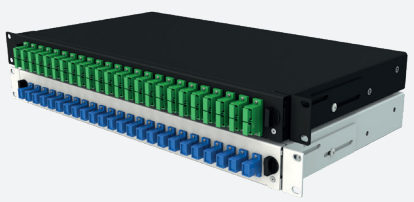
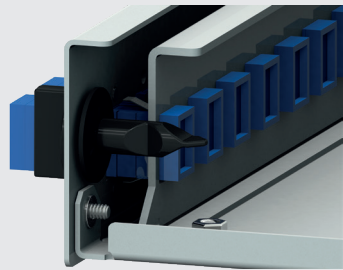
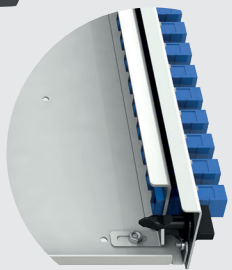
28 different adapter plate options with different compatibility of adapter choose

✓ **Modular adapter plates**

Available with different front plates (sold separately to reduce stock value) for all type of connectors

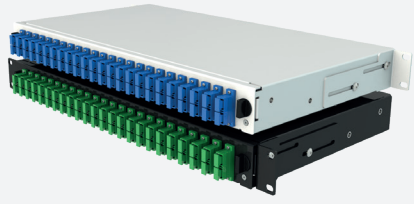


✓ **Optional double layer of front adapter plate**



Adjustable depth in rack cause of mounting brackets positioning

✓ **Adjustable Mounting Brackets and Rear Assembly**

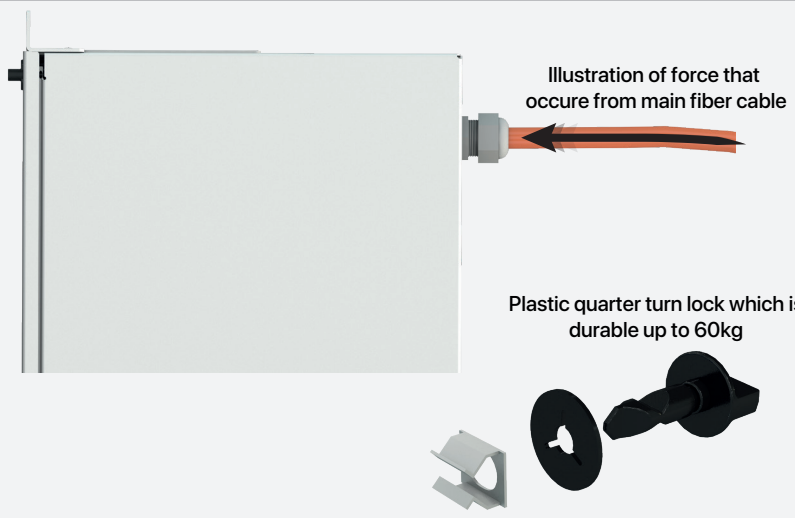


Rear assembly option to Rack

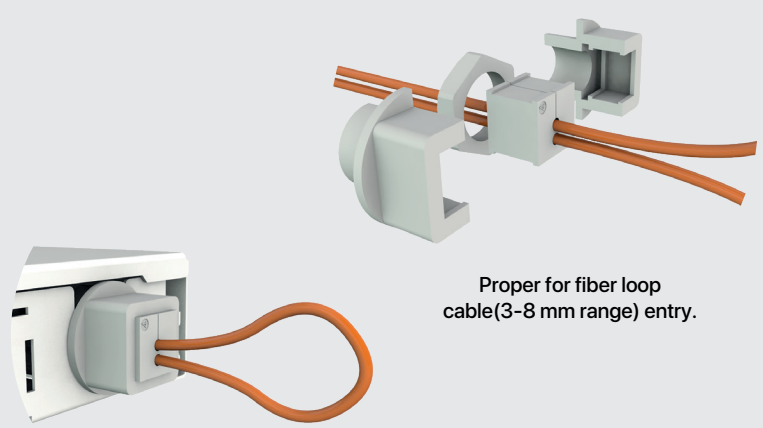


OPTISLIDE 1RU FIBER TERMINATION PATCH/SPLICE PANEL

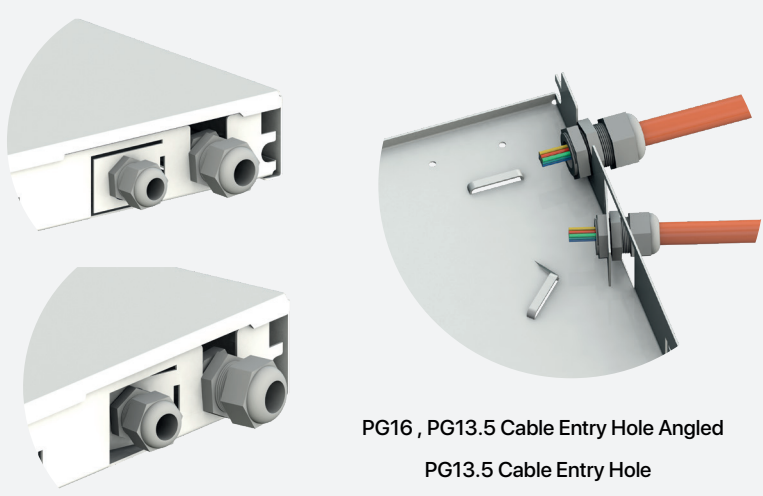
Key Features



✓ Resistance to horizontal force up to 60 kg



✓ Loop Cable Option
Part Number : ALF-LOOP-GLD38



✓ Different Cable Entry options

OPTISLIDE 1RU FIBER TERMINATION PATCH/SPLICE PANEL

Options

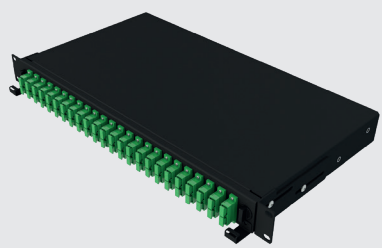
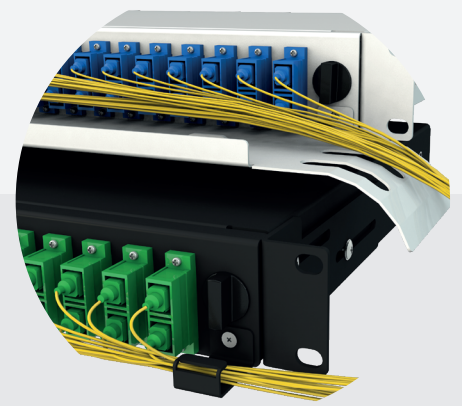


Front cable management part managing and fixing the cables properly

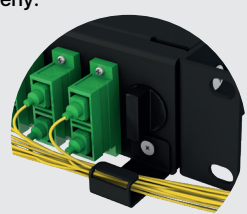
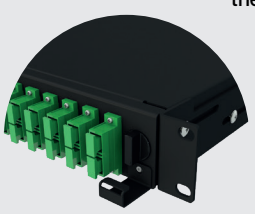


✓ **Front Cable Management Option**

Order No* 102001.98-CC
Front Cable Management Panel



Front cable management ring for holding the cables properly.

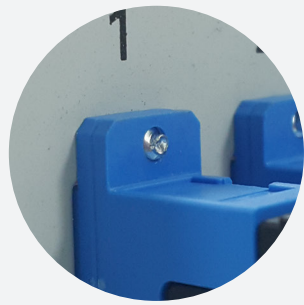


✓ **Front Cable Management Ring Option**

Order No* 102001.99-CC
Front Cable Management Ring



Screw assembly from front



Screw assembly from back

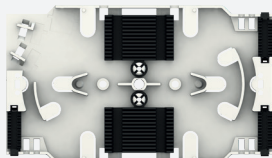


Screw assembly from back with nut

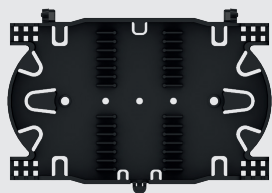
✓ **Adapter screw assembly options**

OPTISLIDE 1RU FIBER OPTIC PATCH/SPLICE PANEL

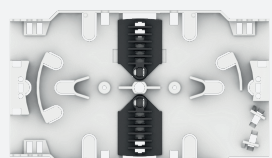
Splice Tray Options



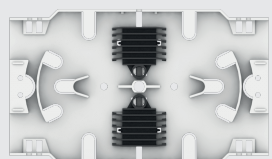
ALF-CMPC



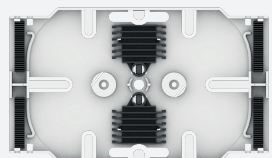
ALF-TR



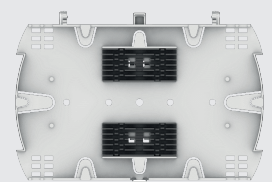
ALF-A



ALF-B

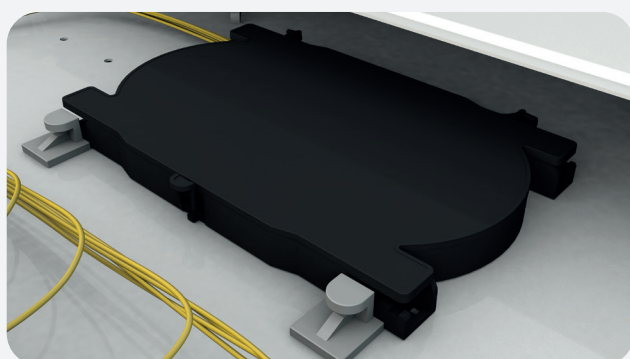


ALF-C



ALF-D

Optional Splice Tray Accesories

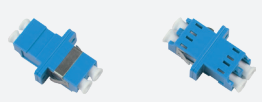
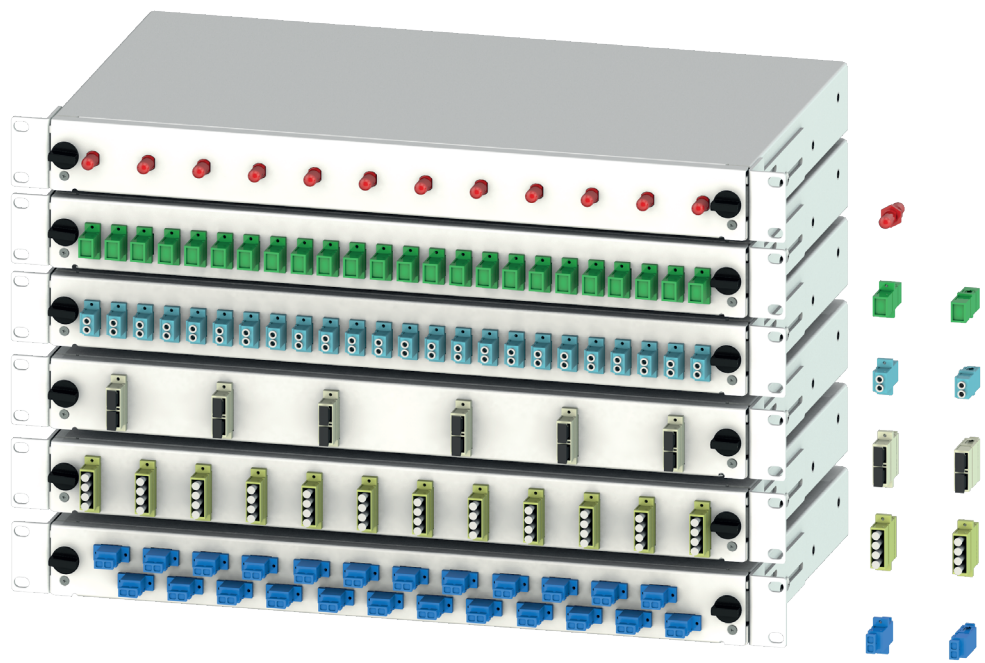


✓ **Splice Tray Stabilizer Set**

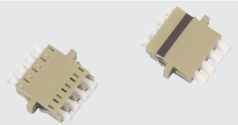
Set contains 2 pieces of plastic part
Part Number : ALF-SPLC-STB

OPTISLIDE 1RU FIBER OPTIC PATCH/SPLICE PANEL

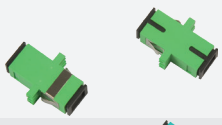
Adapter Series



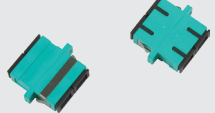
LC Duplex



LC Quad



SC Simplex



SC Duplex



ST



FC



E2000

OPTISLIDE 1RU FIBER OPTIC PATCH/SPLICE PANEL

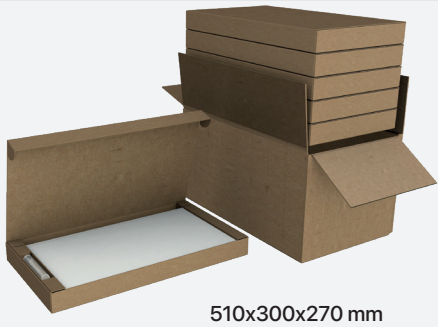
Packaging Details

Standart Accesories (Set)

	PG16, PG13.5 Plastic Cable Gland 1pcs	Plastic Quarter Turn lock 2pcs	
	Adhesive Bunny Clips 6 pcs	M3x7 Fixing Screw 6 pcs	
	Tire wrap (2.5x100)mm 4 pcs	Cage nut 2 pcs (Optional) Part Number : ST-007 (Black) ST-006 (Inox White) ST-003 (White)	



500x280x50 mm
Box Weight: 2,530 kg



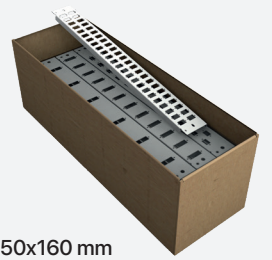
510x300x270 mm

1 Outer Box includes
5 Optislide 1RU Fiber Termination Panel.



Each front plate wrapped
in the transparent nylon bag

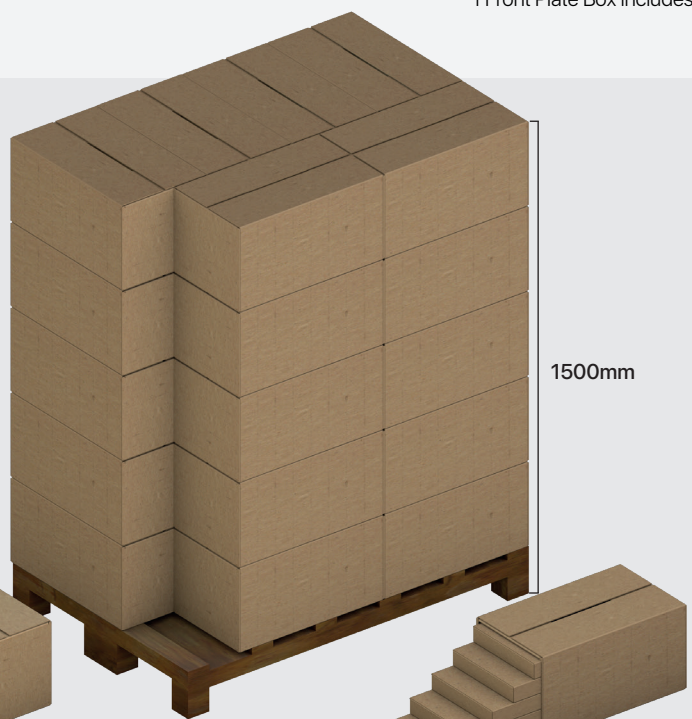
Front Plate Packacing



465x150x160 mm

1 Front Plate Box includes 60 plates.

1 EU Pallet includes;
150 Optislide 1RU Fiber Termination Panel.
EUR Pallet Weight: ~390 kg



EUR pallet
1200x800 mm

1500mm