

Phase 1 Reserves 2019

The Phase 1 surveys for the reserves (Longis Nature Reserve, Alderney Community Woodland and Vau du Saou) were updated in 2019. The field work for Longis and Vau du Saou was done mainly in July and the field work for Community Woodland mainly in September. Only terrestrial habitats were surveyed. Intertidal areas were not included. Also hard and soft cliffs, crevice/ledge vegetation and boulders/rocks above high tide mark were excluded. The survey followed "Handbook for Phase 1 habitat survey – a technique for environmental audit" by JNCC (2010).

This document includes the maps for each reserve together with short summary of the habitats. The detailed target notes are found at the end of this document and as separate excel files.

Longis Nature Reserve



Picture 1. Phase 1 classification of the terrestrial habitats of Longis Nature Reserve 2019.

Summary of the main terrestrial habitats found at Longis Nature Reserve:

Dune grassland (H6.5)

All grassland occurring on consolidated and flattened dunes are classified as dune grassland (JNCC 2010). Dune grassland is one of the most common habitat type at the Longis Nature Reserve. Floral survey was conducted in May 2019 on the species rich dune grassland (target note 64) at Longis Common. It gives a more detailed description of the floral species composition. Three areas of dune

grassland (target notes 42, 46 and 72) are getting overgrown by *Pteridium aquilinum* and *Rubus fruticosus* without management.

Coastal grassland (H8.4)

Coastal grasslands are grasslands which include maritime species and which occur on shallow slopes or level areas by the sea (JNCC 2010). *Armeria maritima* is one of the indicator species. Other species may include *Lotus corniculatus* and *Galium verum* among others. *Festuca rubra* is often dominant (JNCC 2010). In this survey only grasslands with clear coastal influence (high number of maritime species present/maritime species abundant) were classified in this category.

Poor semi-improved grassland (B6)

Semi-improved grassland is a transition category made up of grasslands which have been modified, and consequently have a range of species which is less diverse than unimproved grasslands (JNCC 2010). In this survey poor quality coastal grassland with only few maritime species present in small numbers were classified in this category. The grassland next to the Lighthouse (target note 10) was included in this category because it is heavily managed. However, a high number of maritime species is present in that area compared to the other areas classified as poor semi-improved grassland.

Improved grassland (B4)

Improved grasslands have only a very limited range of grasses and a few common forbs (JNCC 2010). Only one area (target note 19) near the Lighthouse was classified as improved grassland.

Scrub – dense/continuous (A2.1)

Inland areas of Longis Nature Reserve are dominated by *Rubus fruticosus*, *Pteridium aquilinum* and *Ulex europaeus* scrub. *Crataegus monogyna*, *Prunus spinosa*, *Ligustrum vulgare* and *Sambucus nigra* are also common.

Dune scrub (H6.7)

All scrub occurring on consolidated and flattened dunes are classified as dune scrub (JNCC 2010). At Longis Nature Reserve dune scrub is dominated by *Rubus fruticosus* and *Pteridium aquilinum*. *Ligustrum vulgare*, *Sambucus nigra* and *Ulex europaeus* are also present.

Open dune (H6.8)

Open dune comprises the early successional stages of dune formation, less stable and with lower vegetation cover than dune grassland and dune scrub (JNCC 2010). In open dune habitats the sand is not fully consolidated. In this survey only areas, where a bit of sand could be seen between grasses, were classified as open dune. If no sand was visible, the areas were classified as dune grassland or dune scrub depending on the vegetation. Some of the areas (target notes 56 and 60), that were classified as open dune in the previous Phase 1 survey done in 2010, were now classified as dune grassland. In these areas there is lots of *Festuca rubra* and *Elytrigia sp.* growing between *Ammophila arenaria*. They are developing into dune grassland, though still dominated by *Ammophila arenaria*.

Coastal heathland (H8.5)

All heathlands which include maritime species and which occur on shallow slopes, or even level areas, by the sea are classified as coastal heathland (JNCC 2010). There is a small area of coastal heathland composed of *Calluna vulgaris* and *Erica cinerea* at the Longis Nature Reserve.

Saltmarsh – scattered plants (H2.4)

There is a small saltmarsh community of scattered *Juncus maritimus* on the upper rocky shore near Houmet Herbé.

Swamp (F1)

Swamp contains tall emergent vegetation typical of the transition between open water and exposed land (JNCC 2010). The reedbed at Longis pond dominated by *Phragmites australis* is included in this category. Mannez pond was classified as standing water. However, the pond is getting very overgrown and there is barely any open water left. Mannez pond could have been classified as *Typha angustifolia* dominated swamp.

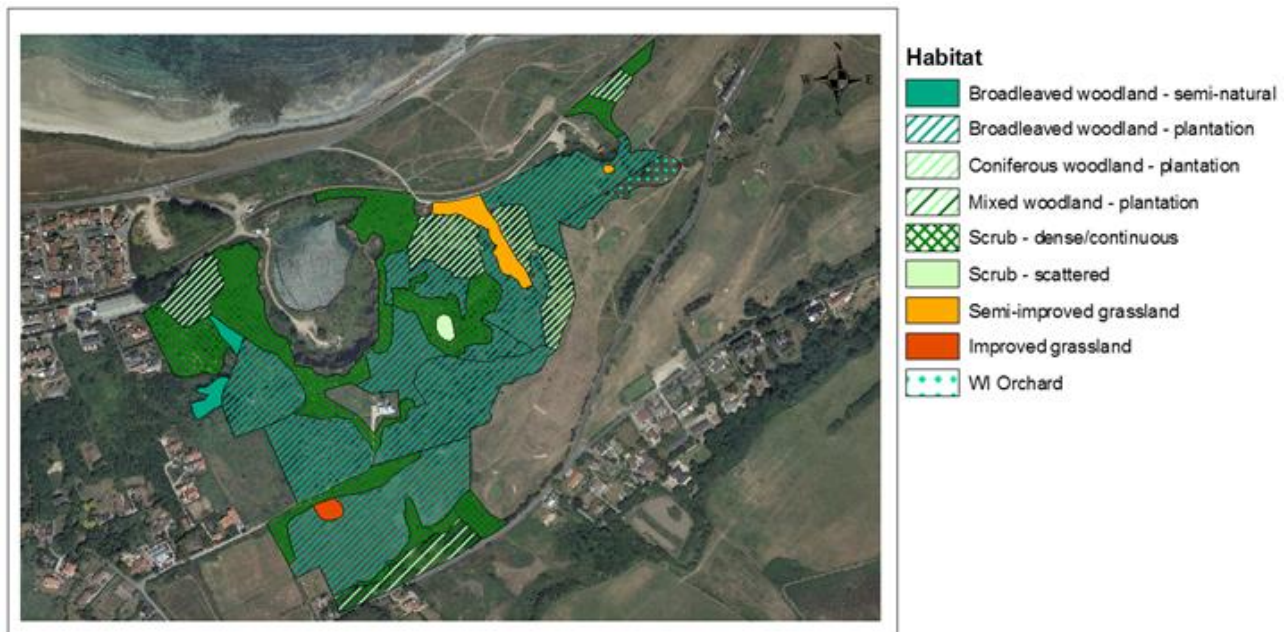
Standing water (G1)

Longis and Mannez ponds. Invasive species *Crassula helmsii* has become a severe problem at Mannez pond. It is not present at Longis pond.

Bracken – dense/continuous (C1.1)

These are areas dominated by *Pteridium aquilinum*.

Alderney Community Woodland



Picture 2. Phase 1 classification of the habitats of Alderney Community Woodland 2019.

Summary of the main habitats found at Alderney Community Woodland:

Broadleaved woodland – semi-natural (A1.1.1)

Semi-natural woodland comprises all stands which do not obviously originate from planting (JNCC 2010). There are two small stands of semi-natural broadleaved woodland dominated by *Acer pseudoplatanus* (target notes 8 and 9).

Broadleaved woodland – plantation (A1.1.2.)

All obviously planted broadleaved woodland of any age is included in this category (JNCC 2010). The aim of the Community Woodland Project is to create a large, centralised, woodland habitat planted with native broadleaved species. Thus, the majority of the area is covered with planted broadleaved woodland. In the planted areas young trees are growing either in dense scrub or in a mosaic of grassland and scrub. Two of the areas have scattered mature *Pinus sp.* (target notes 28 and 29). Majority of the planting was done between 2010 and 2013.

Coniferous woodland – plantation (A1.2.2)

All obviously planted coniferous woodland of any age is included in this category (JNCC 2010). There are mature stands of coniferous woodland dominated by Corsican, maritime and Monterey pines at Community Woodland.

Scrub – dense/continuous (A2.1)

Dense scrub at Community Woodland is dominated by *Rubus fruticosus*, *Prunus spinosa*, *Crataegus monogyna*, *Ulex europaeus* and *Sambucus nigra*.

Scrub – scattered (A2.2)

An area (target note 25), that used to be classified as semi-natural grassland/glade, has turned into scattered scrub. 50% of the area is currently covered with *Rubus fruticosus* scrub and 50% with semi-improved grassland. Without management the area will turn into dense scrub.

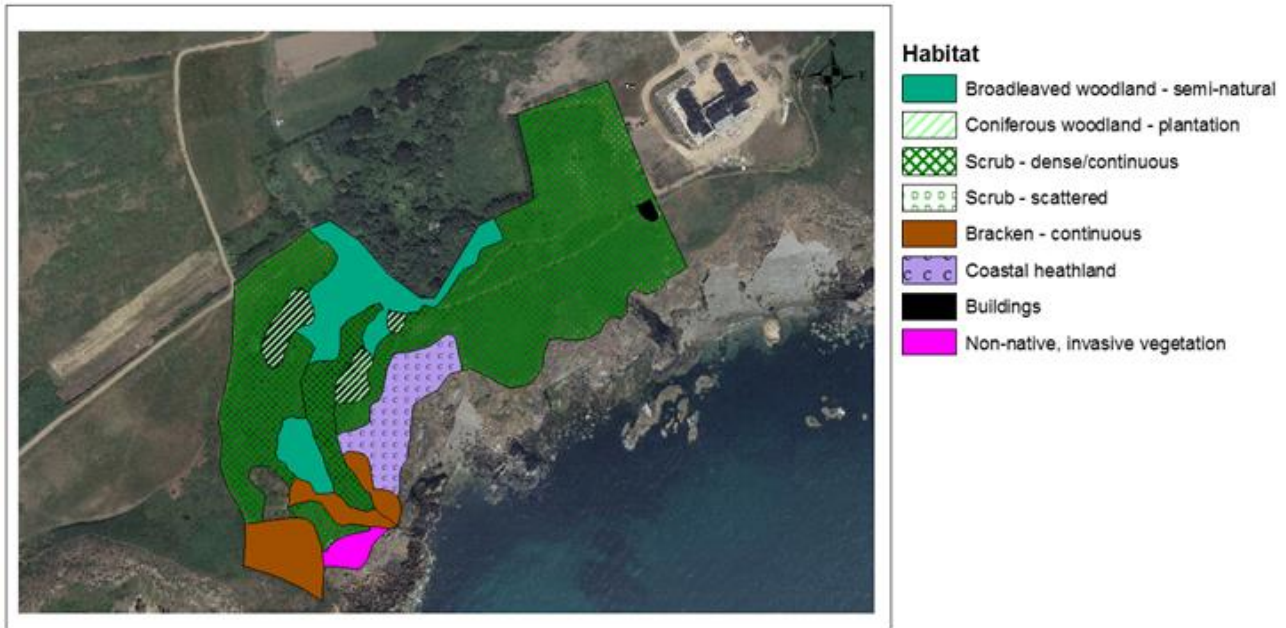
Semi-improved grassland

There is one large area of species rich grassland (target note 21). The area needs regular management so that it doesn't get overgrown by *Rubus fruticosus*. In previous Phase 1 survey in 2010 more areas were classified as semi-natural grassland. However, they have been overgrown by *Rubus fruticosus* (see scrub – scattered).

Improved grassland (B4)

Improved grasslands have only a very limited range of grasses and a few common forbs (JNCC 2010). The grassland in front of the Woodland Bunker, that is regularly cut, was classified as improved grassland (target note 4).

Vau du Saou



Picture 3. Phase 1 classification of the terrestrial habitats of Vau du Saou 2019.

Summary of the main terrestrial habitats found at Vau du Saou:

Scrub – dense/continuous (A2.1)

The most common habitat at Vau du Saou is dense scrub dominated by *Rubus fruticosus*, *Pteridium aquilinum*, *Ulex europaeus*, *Prunus spinosa* and *Crataegus monogyna*. Along the stream there is tall scrub dominated by *Salix cinerea ssp. oleifolia* (target note 5).

Broadleaved woodland – semi-natural (A1.1.1)

Semi-natural woodland comprises all stands which do not obviously originate from planting (JNCC 2010). There are two stands of semi-natural broadleaved woodland (target notes 6 and 9). The larger area (target note 9) is dominated by *Acer pseudoplatanus*, *Ulmus sp.* and *Alnus sp.*

Coniferous woodland – plantation (A1.2.2)

There are three small stands of planted coniferous woodland mainly dominated by *Pinus sp.* (target notes 7, 8 and 10). The understory of these areas is largely just a thick layer of needles.

Bracken – continuous (C1.1)

These are areas dominated by *Pteridium aquilinum*.

Coastal heathland (H8.5)

All heathlands which include maritime species and which occur on shallow slopes, or even level areas, by the sea are classified as coastal heathland (JNCC 2010). The coastal heathland at Vau du

Saou (target note 3) is dominated by *Ulex europaeus* with *Erica cinerea* being abundant in parts of the area.

Non-native, invasive vegetation (J5)

This is an area (target note 12) dominated by *Carpobrotus edulis*. *Ulex europaeus* is relatively abundant as well.

Longis Nature Reserve – target notes



	Habitat code	Habitat name	Dominant species	Notes
1	A2.1	Scrub - dense/continuous	Dominant: <i>Pteridium aquilinum</i> , <i>Rubus fruticosus</i> . Less dominant: <i>Heracleum sphondylium</i> .	
2	A2.2	Scrub - scattered	Dominant: <i>Rubus fruticosus</i> , <i>Festuca rubra</i> . Less dominant: <i>Plantago lanceolata</i> , <i>Heracleum sphondylium</i> .	
3	B6	Poor semi-improved grassland	Dominant: <i>Festuca rubra</i> , <i>Dactylis glomerata</i> , <i>Plantago lanceolata</i> + patches of <i>Rubus fruticosus</i> and <i>Ulex europaeus</i> . Present: <i>Lotus corniculatus</i> , <i>Armeria maritima</i> .	Poor quality coastal grassland with only few maritime species present in small numbers.
4	H8.4	Coastal grassland	Dominant: <i>Plantago lanceolata</i> , <i>Plantago coronopus</i> , <i>Armeria maritima</i> , <i>Dactylis glomerata</i> , <i>Festuca rubra</i> , <i>Hypochaeris sp.</i> , <i>Sedum sp.</i>	Parking area (20% bare ground, 30% highly trampled coastal grassland, 50% coastal grassland).
5	H8.4	Coastal grassland	Dominant: <i>Armeria maritima</i> , <i>Daucus carota</i> , <i>Hypochaeris sp.</i> , <i>Festuca rubra</i> , <i>Sedum sp.</i> + high coverage of mosses and lichens.	Coastal grassland on a cliff top.
6	H8.4	Coastal grassland	Dominant: <i>Armeria maritima</i> , <i>Silene uniflora</i> , <i>Festuca rubra</i> .	Coastal grassland on a steep slope.
7	H8.4	Coastal grassland	Dominant: <i>Festuca rubra</i> , <i>Armeria maritima</i> , <i>Plantago lanceolata</i> . Less dominant: <i>Silene uniflora</i> , <i>Lotus corniculatus</i> + patches of <i>Rubus fruticosus</i> and <i>Ulex europaeus</i> .	

8	H8.4	Coastal grassland	Dominant: <i>Festuca rubra</i> , <i>Dactylis glomerata</i> , <i>Plantago lanceolata</i> , <i>Armeria maritima</i> . Less dominant: <i>Lotus corniculatus</i> , <i>Achillea millefolium</i> + small patches of <i>Rubus fruticosus</i> .	Very small patch of coastal grassland next to a road.
9	A2.1	Scrub - dense/continuous	Dominant: <i>Rubus fruticosus</i> , <i>Pteridium aquilinum</i> , <i>Ulex europaeus</i> , <i>Festuca rubra</i> .	
10	B6	Poor semi-improved grassland	Dominant: <i>Festuca rubra</i> , <i>Dactylis glomerata</i> . Less dominant: <i>Achillea millefolium</i> , <i>Plantago lanceolata</i> , <i>Armeria maritima</i> , <i>Ononis repens</i> , <i>Lotus corniculatus</i> , <i>Daucus carota</i> , <i>Galium verum</i> , <i>Heracleum sphondylium</i> , <i>Thymus polytrichus</i> , <i>Hypochaeris</i> sp.	The area is heavily managed. Without regular cuttings the area could develop into good quality coastal grassland, since there are high number of maritime species present.
11	A2.1	Scrub - dense/continuous	Dominant: <i>Pteridium aquilinum</i> , <i>Rubus fruticosus</i> , <i>Festuca rubra</i> . Less dominant: <i>Raphanus raphanistrum</i> ssp. <i>maritimus</i> , <i>Heracleum sphondylium</i> .	
12	H8.4	Coastal grassland	Dominant: <i>Festuca rubra</i> , <i>Armeria maritima</i> , <i>Plantago lanceolata</i> , <i>Plantago coronopus</i> . Less dominant: <i>Galium verum</i> , <i>Daucus carota</i> , <i>Achillea millefolium</i> , <i>Lotus corniculatus</i> .	
13	J5	Other habitat: non-native, invasive vegetation	Dominant: <i>Carpobrotus edulis</i> .	
14	H8.4	Coastal grassland	Dominant: <i>Festuca rubra</i> , <i>Plantago lanceolata</i> , <i>Carex arenaria</i> , <i>Armeria maritima</i> , <i>Elytrigia</i> sp. Less dominant: <i>Lotus corniculatus</i> , <i>Galium verum</i> , <i>Rubus fruticosus</i> , <i>Pteridium aquilinum</i> , <i>Raphanus raphanistrum</i> ssp. <i>maritimus</i> .	Part of the area is poor quality coastal grassland with dense <i>Festuca rubra</i> , <i>Carex arenaria</i> and <i>Elytrigia</i> sp. and only few other flowering plants.
15	A2.1	Scrub - dense/continuous	Dominant: <i>Rubus fruticosus</i> . <i>Pteridium aquilinum</i> . Less dominant: <i>Festuca rubra</i> , <i>Elytrigia</i> sp., <i>Raphanus raphanistrum</i> ssp. <i>maritimus</i> , <i>Heracleum sphondylium</i> .	
16	H8.4	Coastal grassland	Dominant: <i>Festuca rubra</i> , <i>Plantago lanceolata</i> , <i>Plantago coronopus</i> , <i>Armeria maritima</i> , <i>Lotus corniculatus</i> . Less dominant: <i>Daucus carota</i> , <i>Hypochaeris</i> sp., <i>Achillea millefolium</i> , <i>Convolvulus arvensis</i> .	
17	J3.6	Buildings		Lighthouse.
18	H8.4	Coastal grassland	Dominant: <i>Festuca rubra</i> , <i>Plantago lanceolata</i> , <i>Armeria maritima</i> . Less dominant: <i>Plantago coronopus</i> , <i>Hypochaeris</i> sp., <i>Lotus corniculatus</i> , <i>Achillea millefolium</i> , <i>Galium verum</i> , <i>Dactylis glomerata</i> , <i>Daucus carota</i> , <i>Raphanus raphanistrum</i> ssp. <i>maritimus</i> .	
19	B4	Improved grassland	Dominant: <i>Festuca rubra</i> , <i>Pteridium aquilinum</i> . Less dominant: <i>Rubus fruticosus</i> , <i>Raphanus raphanistrum</i> ssp. <i>maritimus</i> .	Poor quality grassland with no indicator species of coastal grasslands. The area is turning into <i>Rubus fruticosus</i> scrub.

20	B6	Poor semi-improved grassland	Dominant: <i>Festuca rubra</i> , <i>Dactylis glomerata</i> , <i>Carex arenaria</i> . Less dominant: <i>Plantago lanceolata</i> , <i>Rumex acetosella</i> , <i>Achillea millefolium</i> , <i>Rubus fruticosus</i> . Present: <i>Armeria maritima</i> , <i>Silene uniflora</i> .	Poor quality coastal grassland that is highly dominated by <i>Festuca rubra</i> , <i>Dactylis glomerata</i> and <i>Carex arenaria</i> . Only few scattered plants (<i>Armeria maritima</i> and <i>Silene uniflora</i>) indicating coastal influence.
21	A2.1	Scrub - dense/continuous	Dominant: <i>Rubus fruticosus</i> , <i>Pteridium aquilinum</i> . Less dominant: <i>Sambucus nigra</i> , <i>Ulex europaeus</i> , <i>Prunus spinosa</i> .	
22	B6	Poor semi-improved grassland	Dominant: <i>Festuca rubra</i> , <i>Dactylis glomerata</i> . Less dominant: <i>Plantago lanceolata</i> , <i>Rubus fruticosus</i> , <i>Ulex europaeus</i> . Present: <i>Armeria maritima</i> , <i>Achillea millefolium</i> , <i>Hypochaeris sp.</i> , <i>Lotus corniculatus</i> , <i>Silene uniflora</i> , <i>Galium verum</i> .	Poor quality coastal grassland with patches of <i>Rubus fruticosus</i> and <i>Ulex europaeus</i> .
23	A2.1	Scrub - dense/continuous	Dominant: <i>Rubus fruticosus</i> , <i>Pteridium aquilinum</i> . Less dominant: <i>Prunus spinosa</i> , <i>Crataegus monogyna</i> , <i>Ulex europaeus</i> .	
24	A2.1	Scrub - dense/continuous	Dominant: <i>Salix sp.</i>	<i>Salix sp.</i> dominated scrub around the Mannez pond. In parts <i>Salix sp.</i> reaches over 5m, but predominantly the vegetation around the pond is under 5m tall.
25	G1	Standing water		Mannez pond. The pond is very overgrown and resembles more <i>Typha angustifolia</i> dominated swamp in the middle of the summer.
26	A2.1	Scrub - dense/continuous	Dominant: <i>Rubus fruticosus</i> , <i>Pteridium aquilinum</i> .	
27	A2.2	Scrub - scattered	Dominant: <i>Rubus fruticosus</i> , <i>Festuca rubra</i> . Less dominant: <i>Pteridium aquilinum</i> , <i>Raphanus raphanistrum ssp. maritimus</i> .	
28	A2.1	Scrub - dense/continuous	Dominant: <i>Rubus fruticosus</i> , <i>Pteridium aquilinum</i> .	
29	H8.4	Coastal grassland	Dominant: <i>Festuca rubra</i> , <i>Armeria maritima</i> . Less dominant: <i>Plantago lanceolata</i> , <i>Plantago coronopus</i> , <i>Hypochaeris sp.</i> , <i>Carex arenaria</i> , <i>Daucus carota</i> , <i>Lotus corniculatus</i> , <i>Dactylis glomerata</i> , <i>Sedum sp.</i> + small patches of <i>Rubus fruticosus</i> .	The area consists of a mosaic of taller and shorter vegetation. Taller patches are dominated by <i>Festuca rubra</i> and <i>Armeria maritima</i> . The shorter patches are dominated by <i>Plantago coronopus</i> , <i>Hypochaeris sp.</i> , <i>Armeria maritima</i> and <i>Sedum sp.</i> with some mosses and lichens. There are small patches of <i>Rubus fruticosus</i> .
30	A2.1	Scrub - dense/continuous	Dominant: <i>Rubus fruticosus</i> . Less dominant: <i>Festuca rubra</i> , <i>Carex arenaria</i> , <i>Heracleum sphondylium</i> .	
31	A2.1	Scrub - dense/continuous	Dominant: <i>Rubus fruticosus</i> , <i>Pteridium aquilinum</i> . Less dominant: <i>Festuca rubra</i> , <i>Carex arenaria</i> .	

32	H8.4	Coastal grassland	Dominant: <i>Festuca rubra</i> , <i>Armeria maritima</i> , <i>Plantago lanceolata</i> , <i>Raphanus raphanistrum ssp. maritimus</i> . Less dominant: <i>Plantago coronopus</i> , <i>Hypochaeris sp.</i> , <i>Carex arenaria</i> , <i>Elytrigia sp.</i> , <i>Dactylis glomerata</i> , <i>Silene uniflora</i> , <i>Lotus corniculatus</i> . Present: <i>Achillea millefolium</i> , <i>Ononis repens</i> , <i>Daucus carota</i> , <i>Galium verum</i> , <i>Thymus polytrichus</i> , <i>Sedum sp.</i> , <i>Pteridium aquilinum</i> , <i>Rubus fruticosus</i> .	Species rich coastal grassland with small patches of <i>Rubus fruticosus</i> and <i>Pteridium aquilinum</i> . High coverage of mosses and lichens close to the sea.
33	H2.4	Saltmarsh - scattered plants	Dominant: <i>Juncus maritimus</i> , <i>Crithmum maritimum</i> + high coverage of lichens.	
34	H8.5	Coastal heathland	Dominant: <i>Erica cinerea</i> , <i>Plantago lanceolata</i> , <i>Plantago coronopus</i> , <i>Armeria maritima</i> , <i>Hypochaeris sp.</i> Less dominant: <i>Ulex europaeus</i> , <i>Festuca rubra</i> , <i>Dactylis glomerata</i> , <i>Sedum sp.</i> + high coverage of mosses and lichens.	
35	A2.1	Scrub - dense/continuous	Dominant: <i>Rubus fruticosus</i> , <i>Pteridium aquilinum</i> . Less dominant: <i>Raphanus raphanistrum ssp. maritimus</i> , <i>Festuca rubra</i> , <i>Elytrigia sp.</i> , <i>Ulex europaeus</i> .	
36	H8.4	Coastal grassland	Dominant: <i>Armeria maritima</i> , <i>Festuca rubra</i> , <i>Dactylis glomerata</i> , <i>Plantago lanceolata</i> , <i>Plantago coronopus</i> . Less dominant: <i>Silene uniflora</i> , <i>Daucus carota</i> , <i>Raphanus raphanistrum ssp. maritimus</i> .	
37	H8.5	Coastal heathland	Dominant: <i>Erica cinerea</i> , <i>Calluna vulgaris</i> , <i>Armeria maritima</i> , <i>Festuca rubra</i> , <i>Dactylis glomerata</i> , <i>Plantago lanceolata</i> , <i>Plantago coronopus</i> . Less dominant: <i>Ulex europaeus</i> , <i>Rubus fruticosus</i> , <i>Hypochaeris sp.</i> , <i>Silene uniflora</i> , <i>Daucus carota</i> + in parts high coverage of mosses and lichens.	
38	A2.1	Scrub - dense/continuous	Dominant: <i>Rubus fruticosus</i> , <i>Pteridium aquilinum</i> . Less dominant: <i>Ulex europaeus</i> , <i>Ligustrum vulgare</i> , <i>Festuca rubra</i> .	
39	H6.5	Dune grassland	Dominant: <i>Ammophila arenaria</i> , <i>Thymus polytrichus</i> , <i>Plantago lanceolata</i> , <i>Plantago coronopus</i> . Less dominant: <i>Silene uniflora</i> , <i>Lotus corniculatus</i> , <i>Daucus carota</i> , <i>Hypochaeris sp.</i> , <i>Ononis repens</i> , <i>Festuca rubra</i> , <i>Dactylis glomerata</i> , <i>Galium verum</i> , <i>Pteridium aquilinum</i> .	The area consists of a patch dominated by tall <i>Ammophila arenaria</i> and a patch of short vegetation dominated by <i>Thymus polytrichus</i> , <i>Plantago lanceolata</i> , <i>Plantago coronopus</i> and a high coverage of mosses + 10% bare ground.
40	A2.1	Scrub - dense/continuous	Dominant: <i>Rubus fruticosus</i> , <i>Pteridium aquilinum</i> . Less dominant: <i>Ulex europaeus</i> , <i>Raphanus raphanistrum ssp. maritimus</i> , <i>Festuca rubra</i> .	

41	H6.5	Dune grassland	Dominant: <i>Thymus polytrichus</i> , <i>Plantago lanceolata</i> , <i>Plantago coronopus</i> , <i>Festuca rubra</i> . Less dominant: <i>Armeria maritima</i> , <i>Daucus carota</i> , <i>Lotus corniculatus</i> , <i>Galium verum</i> , <i>Ononis repens</i> , <i>Hypochaeris sp.</i> , <i>Dactylis glomerata</i> .	There is a popular footpath going through the area. The grassland is highly trampled, mostly short vegetation with 10% bare ground.
42	H6.5	Dune grassland	Dominant: <i>Festuca rubra</i> , <i>Elytrigia sp.</i> , <i>Plantago lanceolata</i> , <i>Pteridium aquilinum</i> , <i>Rubus fruticosus</i> . Less dominant: <i>Galium verum</i> , <i>Lotus corniculatus</i> , <i>Ononis repens</i> .	The grassland is getting overgrown by <i>Rubus fruticosus</i> and <i>Pteridium aquilinum</i> .
43	H6.7	Dune scrub	Dominant: <i>Sambucus nigra</i> , <i>Ulex europaeus</i> , <i>Rubus fruticosus</i> , <i>Pteridium aquilinum</i> .	
44	H6.7	Dune scrub	Dominant: <i>Rubus fruticosus</i> , <i>Pteridium aquilinum</i> . Less dominant: <i>Ulex europaeus</i> , <i>Festuca rubra</i> , <i>Elytrigia sp.</i> , <i>Ammophila arenaria</i> .	
45	C1.1	Bracken - continuous	Dominant: <i>Pteridium aquilinum</i> .	
46	H6.5	Dune grassland	Dominant: <i>Festuca rubra</i> , <i>Plantago lanceolata</i> , <i>Pteridium aquilinum</i> , <i>Rubus fruticosus</i> . Less dominant: <i>Galium verum</i> , <i>Elytrigia sp.</i> , <i>Ammophila arenaria</i> , <i>Lotus corniculatus</i> , <i>Trifolium pratense</i> , <i>Dactylis glomerata</i> , <i>Ononis repens</i> .	The grassland is getting overgrown by <i>Rubus fruticosus</i> and <i>Pteridium aquilinum</i> .
47	H6.8	Open dune	Dominant: <i>Ammophila arenaria</i> . Less dominant: <i>Festuca rubra</i> , <i>Raphanus raphanistrum ssp. maritimus</i> , <i>Rubus fruticosus</i> .	
48	J4	Bare ground		Parking area (50% highly trampled dune grassland H6.5, 50% bare ground).
49	H6.5	Dune grassland	Dominant: <i>Ammophila arenaria</i> , <i>Festuca rubra</i> . Less dominant: <i>Plantago lanceolata</i> , <i>Hypochaeris sp.</i> , <i>Galium verum</i> , <i>Ononis repens</i> , <i>Convolvulus arvensis</i> .	
50	H6.7	Dune scrub	Dominant: <i>Rubus fruticosus</i> , <i>Festuca rubra</i> .	
51	C1.1	Bracken - continuous	Dominant: <i>Pteridium aquilinum</i> . Less dominant: <i>Festuca rubra</i> , <i>Rubus fruticosus</i> .	Dune grassland (H6.5) with very high coverage of <i>Pteridium aquilinum</i> . Some small open patches with <i>Plantago lanceolata</i> , <i>Lotus corniculatus</i> , <i>Ononis repens</i> , <i>Hypochaeris sp.</i> , <i>Convolvulus arvensis</i> etc.
52	H6.8	Open dune	Dominant: <i>Ammophila arenaria</i> . Less dominant: <i>Rubus fruticosus</i> , <i>Festuca rubra</i> .	
53	H6.5	Dune grassland	Dominant: <i>Festuca rubra</i> . Less dominant: <i>Plantago lanceolata</i> , <i>Hypochaeris sp.</i> , <i>Galium verum</i> , <i>Anagallis arvensis</i> .	Dune grassland with lots of small flowering plants and high coverage of mosses.
54	J4	Bare ground		Parking area (50% highly trampled dune grassland H6.5, 50% bare ground).
55	H6.5	Dune grassland	Dominant: <i>Elytrigia sp.</i> Less dominant: <i>Festuca rubra</i> , <i>Carex arenaria</i> .	

56	H6.5	Dune grassland	Dominant: <i>Ammophila arenaria</i> . Less dominant: <i>Festuca rubra</i> , <i>Elytrigia sp.</i> , <i>Carex arenaria</i> + patches of <i>Rubus fruticosus</i> .	Lots of <i>Festuca rubra</i> , <i>Elytrigia sp.</i> and <i>Carex arenaria</i> growing between <i>Ammophila arenaria</i> . In previous Phase 1 survey the area was classified as open dune. It is developing into dune grassland, though still dominated by <i>Ammophila arenaria</i> .
57	H6.5	Dune grassland	Dominant: <i>Elytrigia sp.</i> , <i>Festuca rubra</i> . Less dominant: <i>Ammophila arenaria</i> , <i>Carex arenaria</i> , <i>Plantago lanceolata</i> + patches of <i>Rubus fruticosus</i> .	
58	H6.7	Dune scrub	Dominant: <i>Rubus fruticosus</i> , <i>Ligustrum vulgare</i> , <i>Pteridium aquilinum</i> .	
59	H6.5	Dune grassland	Dominant: <i>Festuca rubra</i> , <i>Hypochaeris sp.</i> , <i>Thymus polytrichus</i> , <i>Galium verum</i> , <i>Anagallis arvensis</i> , <i>Plantago lanceolata</i> , <i>Lotus corniculatus</i> , <i>Ononis repens</i> , <i>Daucus carota</i> , <i>Plantago coronopus</i> , <i>Carex arenaria</i> , <i>Raphanus raphanistrum ssp. maritimus</i> . Present: <i>Anacamptis pyramidalis</i> + high coverage of mosses and lichens.	Dune grassland with lots of small flowering plants and high coverage of mosses and lichens.
60	H6.5	Dune grassland	Dominant: <i>Ammophila arenaria</i> . Less dominant: <i>Elytrigia sp.</i> , <i>Festuca rubra</i> , <i>Pteridium aquilinum</i> , <i>Rubus fruticosus</i> .	Lots of <i>Festuca rubra</i> and <i>Elytrigia sp.</i> growing between <i>Ammophila arenaria</i> . In previous Phase 1 survey the area was classified as open dune. It is developing into dune grassland, though still dominated by <i>Ammophila arenaria</i> .
61	A2.1	Scrub - dense/continuous	Dominant: <i>Rubus fruticosus</i> , <i>Pteridium aquilinum</i> . Less dominant: <i>Urtica dioica</i> .	
62	J1.2	Cultivated/disturbed land - amenity grassland		
63	A2.1	Scrub - dense/continuous	Dominant: <i>Rubus fruticosus</i> . Less dominant: <i>Raphanus raphanistrum ssp. maritimus</i> , <i>Festuca rubra</i> .	
64	H6.5	Dune grassland	Dominant: <i>Festuca rubra</i> , <i>Dactylis glomerata</i> , <i>Raphanus raphanistrum ssp. maritimus</i> .	Species rich dune grassland. Floral survey conducted in May 2019, which gives a more detailed description of the floral species composition. Species present include <i>Anacamptis pyramidalis</i> , <i>Anagallis arvensis</i> , <i>Arenaria serpyllifolia</i> , <i>Cerastium fontanum</i> , <i>Galium verum</i> , <i>Geranium molle</i> , <i>Hypochaeris radicata</i> , <i>Lotus corniculatus</i> , <i>Myosotis ramosissima</i> , <i>Plantago lanceolata</i> , <i>Ranunculus bulbosus</i> , <i>Thymus polytrichus</i> , <i>Veronica arvensis</i> etc.
65	H6.5	Dune grassland	Dominant: <i>Elytrigia sp.</i> , <i>Festuca rubra</i> .	Species poor dune grassland.
66	A2.2	Scrub - scattered	Dominant: <i>Rubus fruticosus</i> . Less dominant: <i>Festuca rubra</i> , <i>Elytrigia sp.</i> , <i>Raphanus raphanistrum ssp. maritimus</i> , <i>Ulex europaeus</i> , <i>Sambucus nigra</i> .	<i>Rosa rugosa</i> spreading from the private garden.
67	H6.5	Dune grassland	Dominant: <i>Festuca rubra</i> , <i>Elytrigia sp.</i> . Less dominant: <i>Raphanus raphanistrum ssp. maritimus</i> , <i>Rubus fruticosus</i> .	Small flowering plants present unlike in area 65. <i>Hypochaeris sp.</i> , <i>Galium verum</i> , <i>Thymus polytrichus</i> , <i>Lotus corniculatus</i> etc.

68	H6.5	Dune grassland	Dominant: <i>Festuca rubra</i> , <i>Ammophila arenaria</i> , <i>Elytrigia sp.</i> Less dominant: <i>Rubus fruticosus</i> .	
69	C1.1	Bracken - continuous	Dominant: <i>Pteridium aquilinum</i> .	
70	H8.4	Coastal grassland	Dominant: <i>Festuca rubra</i> , <i>Dactylis glomerata</i> , <i>Plantago lanceolata</i> . Less dominant: <i>Lotus corniculatus</i> , <i>Hypochaeris sp.</i> , <i>Ononis repens</i> + patches of <i>Rubus fruticosus</i> .	
71	A2.1	Scrub - dense/continuous	Dominant: <i>Rubus fruticosus</i> , <i>Ligustrum vulgare</i> , <i>Ulex europaeus</i> , <i>Pteridium aquilinum</i> , <i>Crataegus monogyna</i> , <i>Prunus spinosa</i> , <i>Rosa canina</i> .	
72	H6.5	Dune grassland	Dominant: <i>Festuca rubra</i> , <i>Pteridium aquilinum</i> . Less dominant: <i>Plantago lanceolata</i> , <i>Thymus polytrichus</i> , <i>Lotus corniculatus</i> , <i>Hypochaeris sp.</i> , <i>Galium verum</i> , <i>Ononis repens</i> , <i>Rubus fruticosus</i> . Present: <i>Anacamptis pyramidalis</i> .	The grassland is getting overgrown by <i>Pteridium aquilinum</i> and <i>Rubus fruticosus</i> .
73	A2.1	Scrub - dense/continuous	Dominant: <i>Rubus fruticosus</i> , <i>Pteridium aquilinum</i> .	
74	A2.1	Scrub - dense/continuous	Dominant: <i>Sambucus nigra</i> . Less dominant: <i>Rubus fruticosus</i> , <i>Pteridium aquilinum</i> .	Dense scrub dominated by tall <i>Sambucus nigra</i> .
75	A2.1	Scrub - dense/continuous	Dominant: <i>Sambucus nigra</i> , <i>Populus alba</i> . Less dominant: <i>Rubus fruticosus</i> .	Tall scrub close to the Longis pond.
76	F1	Swamp	Dominant: <i>Phragmites australis</i>	Reedbed around the Longis pond.
77	G1	Standing water		Longis pond.
78	H6.5	Dune grassland	Dominant: <i>Festuca rubra</i> , <i>Elytrigia sp.</i> Less dominant: <i>Carex arenaria</i> .	

Alderney Community Woodland – target notes

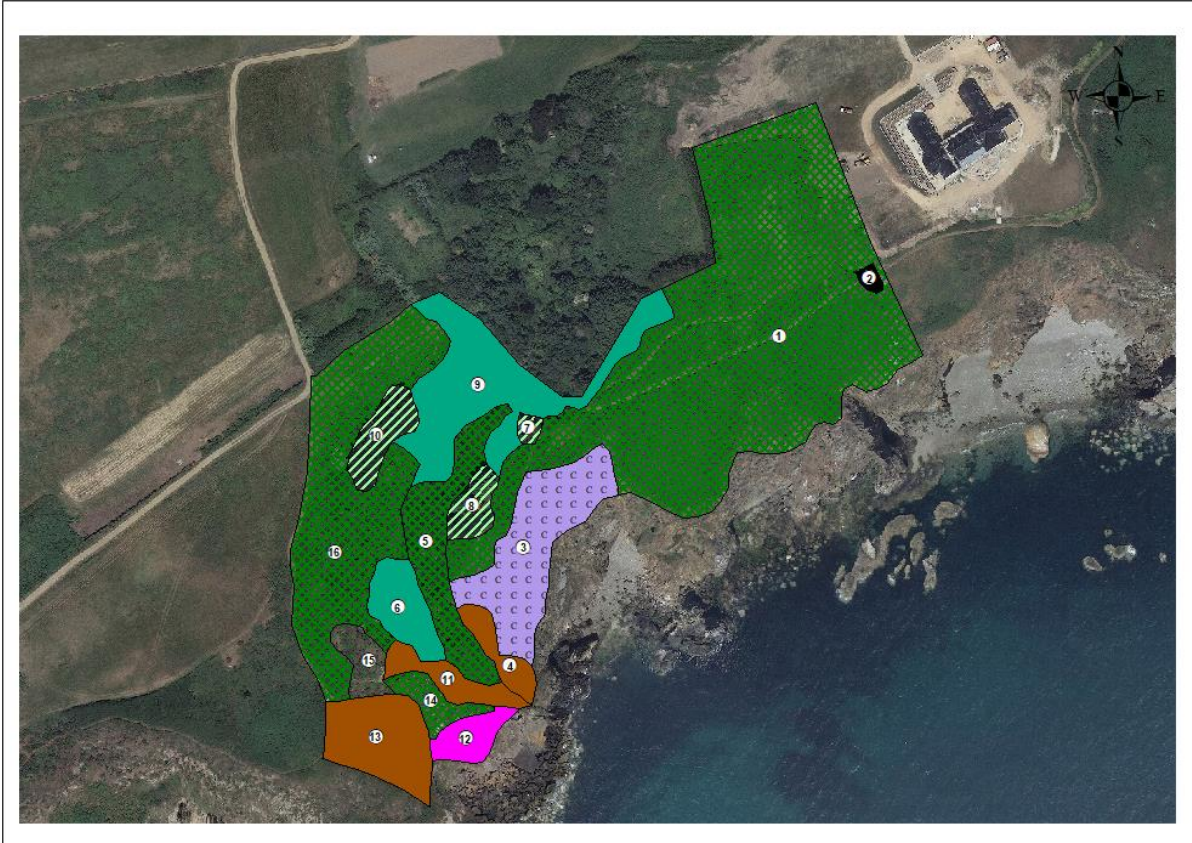


Habitat code	Habitat name	Dominant species	Notes
1	A1.3.2 Mixed woodland - plantation	Dominant: <i>Pinus sp.</i> , <i>Acer pseudoplatanus</i> , <i>Ulmus sp.</i>	Stand of mature mixed woodland. Understory dominated by <i>Hedera helix</i> and <i>Rubus fruticosus</i> .
2	A2.1 Scrub - dense/continuous	Dominant: <i>Rubus fruticosus</i> , <i>Prunus spinosa</i> . Less dominant: <i>Crataegus monogyna</i> .	
3	A1.1.2 Broadleaved woodland - plantation	Dominant: Planted native broadleaved trees + large patches of <i>Rubus fruticosus</i> .	Young, planted trees growing in a mosaic of grassland and <i>Rubus fruticosus</i> scrub. Planted in 2010.
4	B4 Improved grassland	Dominant: <i>Dactylis glomerata</i> , <i>Trifolium repens</i> , <i>Plantago lanceolata</i> + unknown grass species.	Regularly cut grassland in front of Woodland Bunker.
5	A2.1 Scrub - dense/continuous	Dominant: <i>Rubus fruticosus</i> + taller <i>Crataegus monogyna</i> and <i>Acer pseudoplatanus</i> .	Native broadleaved trees have been planted in the <i>Rubus fruticosus</i> scrub.
6	A1.1.2 Broadleaved woodland - plantation	Dominant: Planted native broadleaved trees + <i>Rubus fruticosus</i> . Less dominant: <i>Crataegus monogyna</i> , <i>Ulex europaeus</i> , <i>Sambucus nigra</i> .	Young, planted trees growing in dense scrub. Planted in 2012.
7	A1.1.2 Broadleaved woodland - plantation	Dominant: Planted native broadleaved trees + <i>Rubus fruticosus</i> . Less dominant: <i>Crataegus monogyna</i> , <i>Sambucus nigra</i> .	Young, planted trees growing in dense scrub. Planted in 2011.

8	A1.1.1	Broadleaved woodland - semi-natural	Dominant: <i>Acer pseudoplatanus</i> .	Small stand of semi-natural broadleaved woodland. Understory dominated by <i>Hedera helix</i> and <i>Asplenium scolopendrium</i> .
9	A1.1.1	Broadleaved woodland - semi-natural	Dominant: <i>Acer pseudoplatanus</i> .	Small stand of semi-natural broadleaved woodland. Understory dominated by <i>Hedera helix</i> .
10	A2.1	Scrub - dense/continuous	Dominant: <i>Rubus fruticosus</i> , <i>Prunus spinosa</i> , <i>Crataegus monogyna</i> , <i>Ulex europaeus</i> , <i>Sambucus nigra</i> .	Dense scrub around Battery Quarry.
11	A2.1	Scrub - dense/continuous	Dominant: <i>Prunus spinosa</i> , <i>Crataegus monogyna</i> , <i>Acer pseudoplatanus</i> .	Tall, dense scrub with scattered broadleaved trees.
12	A1.2.2	Coniferous woodland - plantation	Dominant: <i>Pinus sp.</i>	Stand of mature conifers. Understory dominated by <i>Hedera helix</i> with scattered <i>Sambucus nigra</i> and <i>Acer pseudoplatanus</i> scrub, and <i>Pteridium aquilinum</i> . In parts the understory is just a thick layer of needles.
13	A2.1	Scrub - dense/continuous	Dominant: <i>Rubus fruticosus</i> .	
14	A1.2.2	Coniferous woodland - plantation	Dominant: <i>Pinus sp.</i>	Small stand of mature conifers next to the railway line.
15	A2.1	Scrub - dense/continuous	Dominant: <i>Rubus fruticosus</i> , <i>Ulex europaeus</i> , <i>Crataegus monogyna</i> , <i>Sambucus nigra</i> .	
16	A1.1.2	Broadleaved woodland - plantation	Dominant: Planted native broadleaved trees + <i>Rubus fruticosus</i> , <i>Pteridium aquilinum</i> , <i>Crataegus monogyna</i> , <i>Sambucus nigra</i> .	Young, planted trees growing in dense scrub. Planted in ?
17		Semi-improved grassland	Dominant: <i>Festuca rubra</i> , <i>Plantago lanceolata</i> . Less dominant: <i>Lotus corniculatus</i> , <i>Galium verum</i> .	Small area of semi-improved grassland that is getting overgrown by <i>Rubus fruticosus</i> .
18	A1.1.2	Broadleaved woodland - plantation	Dominant: Planted native broadleaved trees + <i>Rubus fruticosus</i> , <i>Pteridium aquilinum</i> . Less dominant: <i>Crataegus monogyna</i> , <i>Sambucus nigra</i> .	Young, planted trees growing in dense scrub. Planted in 2011.
19	A1.2.2	Coniferous woodland - plantation	Dominant: <i>Pinus sp.</i>	Stand of mature conifers. Understory a mosaic of grassland and <i>Rubus fruticosus/Prunus spinosa</i> scrub + young, planted broadleaved trees in the canopy openings.
20	A1.1.2	Broadleaved woodland - plantation	Dominant: Planted native broadleaved trees.	Young, planted trees growing in a mosaic of grassland and <i>Rubus fruticosus</i> scrub. Planted in 2014.
21		Semi-improved grassland	Dominant: <i>Festuca rubra</i> , <i>Dactylis glomerata</i> , <i>Plantago lanceolata</i> , <i>Hypochaeris sp.</i> Less dominant: <i>Raphanus raphanistrum ssp. maritimus</i> , <i>Lotus corniculatus</i> , <i>Galium verum</i> , <i>Achillea millefolium</i> , <i>Ononis repens</i> + relatively large patches of <i>Rubus fruticosus</i> .	Species-rich glade grassland that is getting overgrown by <i>Rubus fruticosus</i> without management.

22	A1.1.2	Broadleaved woodland - plantation	Dominant: Planted native broadleaved trees + <i>Rubus fruticosus</i> , <i>Crataegus monogyna</i> , <i>Ulex europaeus</i> .	Young, planted trees growing in dense scrub. Planted in 2013.
23	A1.2.2	Coniferous woodland - plantation	Dominant: <i>Pinus sp.</i>	Stand of mature conifers. Understory dominated by <i>Rubus fruticosus</i> + young, planted broadleaved trees in the canopy openings.
24	A1.1.2	Broadleaved woodland - plantation	Dominant: Planted native broadleaved trees + <i>Rubus fruticosus</i> . Less dominant: <i>Crataegus monogyna</i> , <i>Sambucus nigra</i> .	Young, planted trees growing in dense scrub. Planted in 2012.
25	A2.2	Scrub - scattered	Dominant: <i>Rubus fruticosus</i> , <i>Festuca rubra</i> . Less dominant: <i>Lotus corniculatus</i> , <i>Galium verum</i> .	Semi-improved grassland that is getting overgrown by <i>Rubus fruticosus</i> . Currently 50% <i>Rubus fruticosus</i> scrub, 50% semi-improved grassland. Without management will turn into dense scrub.
26	A2.1	Scrub - dense/continuous	Dominant: <i>Rubus fruticosus</i> , <i>Crataegus monogyna</i> . Less dominant: <i>Ulex europaeus</i> .	Dense scrub with some scattered <i>Pinus sp.</i>
27	A1.1.2	Broadleaved woodland - plantation	Dominant: Planted native broadleaved trees + <i>Rubus fruticosus</i> . Less dominant: <i>Crataegus monogyna</i> .	Young, planted trees growing in dense scrub. Planted in 2012.
28	A1.1.2	Broadleaved woodland - plantation	Dominant: Planted native broadleaved trees + <i>Rubus fruticosus</i> . Less dominant: <i>Crataegus monogyna</i> , <i>Ulex europaeus</i> , <i>Sambucus nigra</i> + scattered mature <i>Pinus sp.</i>	Young, planted trees growing in dense scrub with some scattered mature <i>Pinus sp.</i> Planted in 2012.
29	A1.1.2	Broadleaved woodland - plantation	Dominant: Planted native broadleaved trees + <i>Rubus fruticosus</i> . Less dominant: <i>Crataegus monogyna</i> , <i>Ulex europaeus</i> , <i>Sambucus nigra</i> + scattered mature <i>Pinus sp.</i>	Young, planted trees growing in dense scrub with some scattered mature <i>Pinus sp.</i> Planted in 2011.
30		WI Orchard		

Vau du Saou – target notes



	Habitat code	Habitat name	Dominant species	Notes
1	A2.1	Scrub - dense/continuous	Dominant: <i>Rubus fruticosus</i> , <i>Pteridium aquilinum</i> . Less dominant: <i>Ulex europaeus</i> , <i>Prunus spinosa</i> .	
2	J3.6	Buildings		Wildlife bunker.
3	H8.5	Coastal heathland	Dominant: <i>Ulex europaeus</i> . Less dominant: <i>Erica cinerea</i> , <i>Rubus fruticosus</i> , <i>Pteridium aquilinum</i> , <i>Teucrium scorodonia</i> .	<i>Erica cinerea</i> is abundant in parts of the area. In other parts it is scattered or absent.
4	C1.1	Bracken - continuous	Dominant: <i>Pteridium aquilinum</i> .	
5	A2.1	Scrub - dense/continuous	Dominant: <i>Salix cinerea ssp. oleifolia</i> . Less dominant: <i>Sambucus nigra</i> , <i>Ulmus sp.</i>	Tall scrub (4-5m) along the stream.
6	A1.1.1	Broadleaved woodland - semi-natural	Dominant: <i>Acer pseudoplatanus</i> , <i>Ulmus sp.</i> , <i>Populus alba</i> . Less dominant: <i>Sambucus nigra</i> , <i>Crataegus monogyna</i> .	Broadleaved woodland. Understory dominated by <i>Hedera helix</i> , <i>Athyrium filix-femina</i> , <i>Asplenium scolopendrium</i> , <i>Heracleum sphondylium</i> .
7	A1.2.2	Coniferous woodland - plantation	Dominant: <i>Pinus sp.</i>	Small stand of <i>Pinus sp.</i> Understory a thick layer of needles with some <i>Pteridium aquilinum</i> .
8	A1.2.2	Coniferous woodland - plantation	Dominant: <i>Pinus sp.</i> , <i>Thuja sp.</i>	Small stand of conifers. Understory a thick layer of needles with some <i>Hedera helix</i> . There is a canopy opening in the middle of the area which is dominated by <i>Rubus fruticosus</i> , <i>Pteridium aquilinum</i> and <i>Silene dioica</i> .

9	A1.1.1	Broadleaved woodland - semi-natural	Dominant: <i>Acer pseudoplatanus</i> , <i>Ulmus sp.</i> , <i>Alnus sp.</i>	Broadleaved woodland. Understory dominated by <i>Hedera helix</i> and <i>Hyacinthoides non-scripta</i> .
10	A1.2.2	Coniferous woodland - plantation	Dominant: <i>Pinus sp.</i>	Small stand of <i>Pinus sp.</i> Understory mainly a thick layer of needles.
11	C1.1	Bracken - continuous	Dominant: <i>Pteridium aquilinum</i> .	
12	J5	Other habitat: non-native, invasive vegetation	Dominant: <i>Carpobrotus edulis</i> . Less dominant: <i>Ulex europaeus</i> .	
13	C1.1	Bracken - continuous	Dominant: <i>Pteridium aquilinum</i> .	
14	A2.1	Scrub - dense/continuous	Dominant: <i>Ulex europaeus</i> . Less dominant: <i>Silene uniflora</i> , <i>Umbilicus rupestris</i> , <i>Rumex acetosella</i> .	
15	A2.2	Scrub - scattered	Dominant: <i>Ulex europaeus</i> , <i>Rumex acetosella</i> , <i>Silene uniflora</i> , <i>Teucrium scorodonia</i> , <i>Umbilicus rupestris</i> , <i>Hedera helix</i> , <i>Dactylis glomerata</i> .	50% <i>Ulex europaeus</i> , 50% coastal grassland.
16	A2.1	Scrub - dense/continuous	Dominant: <i>Rubus fruticosus</i> , <i>Pteridium aquilinum</i> . Less dominant: <i>Ulex europaeus</i> , <i>Prunus spinosa</i> , <i>Crataegus monogyna</i> , <i>Heracleum sphondylium</i> .	

Reference:

Gonzales, C. (2014). Alderney Community Woodland Management Plan 2014-2018.

Henney, J., Gauvain, R. and Pyne, L. (2011). Alderney Community Woodland Development Plan 2011-2014.

JNCC. (2010). Handbook for Phase 1 habitat survey – a technique for environmental audit.

Rubio, R. M. and Whyte, M. Longis Reserve Management Plan 2017-2021.