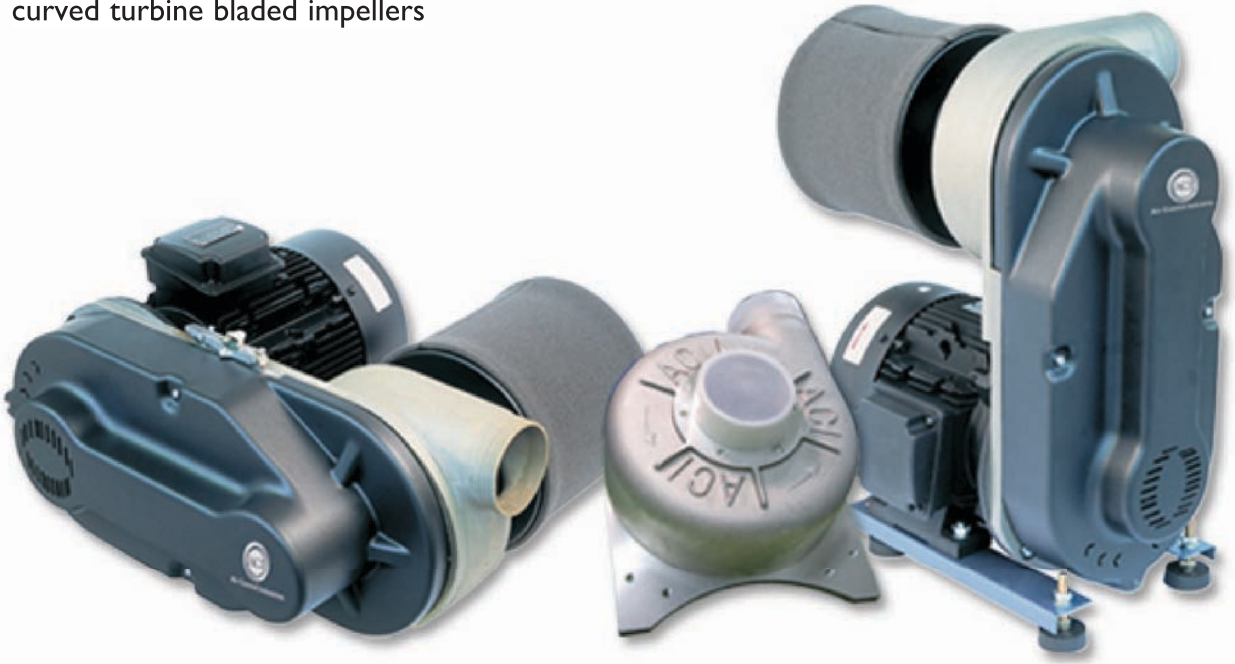


EP10A Compact Blowers

A belt-driven, centrifugal blower incorporating backward curved turbine bladed impellers



Powerful and robust, ACI's EP10A Compact Blowers incorporates a backward curved turbine bladed impeller. They are available with motors from 5.5 through to 18.5kW in standard metric or NEMA frames and can be easily retrofitted in place of other belt driven alternatives. Due to its relatively small footprint, the EP10A is ideal for integrating into customer's equipment.

Additionally, a hot air version is available, processing air inlet temperatures of up to 185°C / 330°F. With no costly water cooling required, significant gains in installation and running costs as well as the reliability make the EP10A/EP10AH the first choice for process air.

Key Performance Figures:

- Flow rates up to 2040m³/hr (1200cfm)
- Pressures up to 250mBar (100In.Swg)
- 5.5kW (7.4HP) to 18.5kW (25HP)
- Reliable, maintenance-free operation

Typical Applications:

- Air Knife systems
- Gas boosting
- Air sampling
- Pneumatic conveying
- Heated process air
- Clean rooms
- Vacuum systems

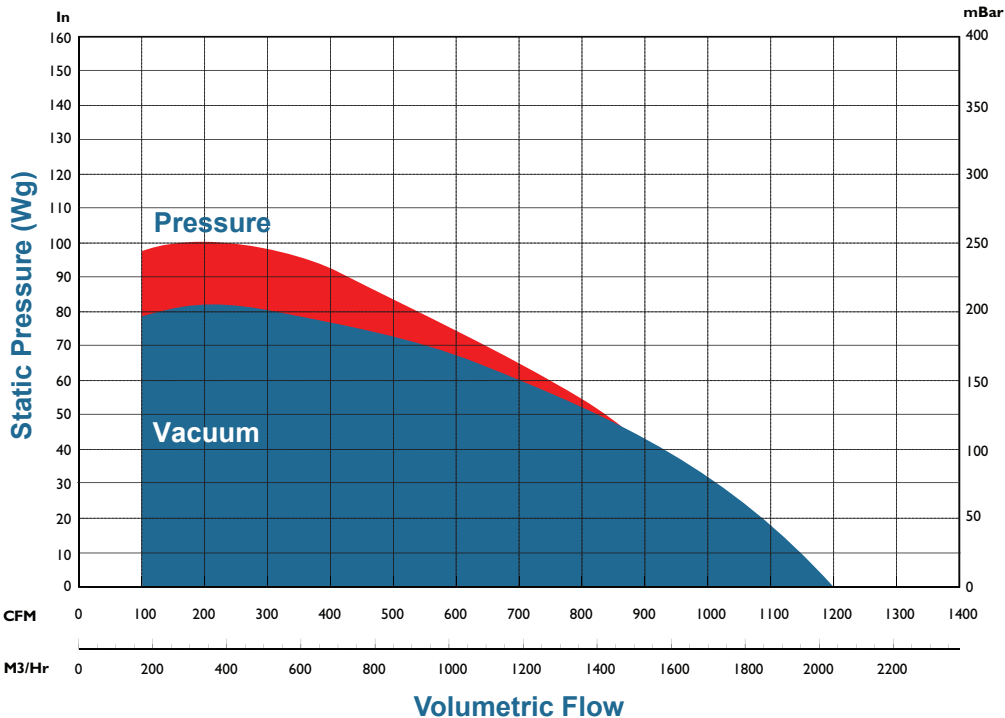


EP10A Compact Blowers

A belt-driven, centrifugal blower incorporating backward curved turbine bladed impellers

50Hz Performance Curves:

The illustrated curves are for 240V 1Ph 50Hz and for selection purposes only. For full performance details please refer to the specific data sheets. By varying the speed of the blower a wide variety of performances can be achieved within the shaded areas.



Reliability and Versatility

The EP10A industrial blower is one of ACI's principal and most versatile products. Its design is fundamentally different from other belt driven units because the blower head is cast and machined as a single piece. Equally spaced bearings have been configured specifically to provide an even loading from the belt drive. This allows the belt to run at much lower running tensions which results in significantly reduced loads on all parts of the assembly.

- A vigorous running in test is performed on each head where the bearing temperatures are monitored
- Standard 18 months warranty given
- No expensive Variable Frequency Drive (VFD) required
- EP10AH (Hot air versions) available with no external cooling required

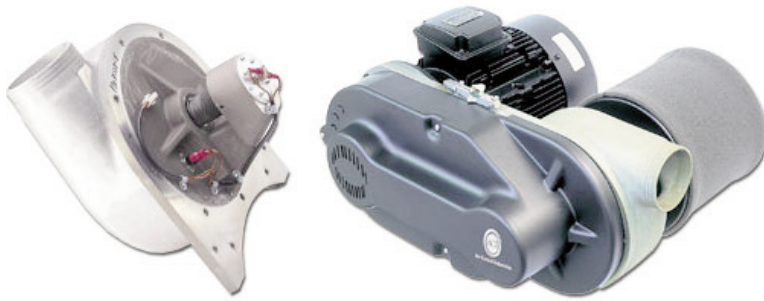
Air Control Industries Ltd
Weycroft Avenue, Millwey Rise Industrial Estate,
Axminster, Devon, EX13 5HU, United Kingdom
Tel: +44(0)1297 529242 Fax: +44(0)1297 529241
Email: sales@aircontrolindustries.com

www.aircontrolindustries.com

EP10A Compact

Belt Driven Centrifugal Blower

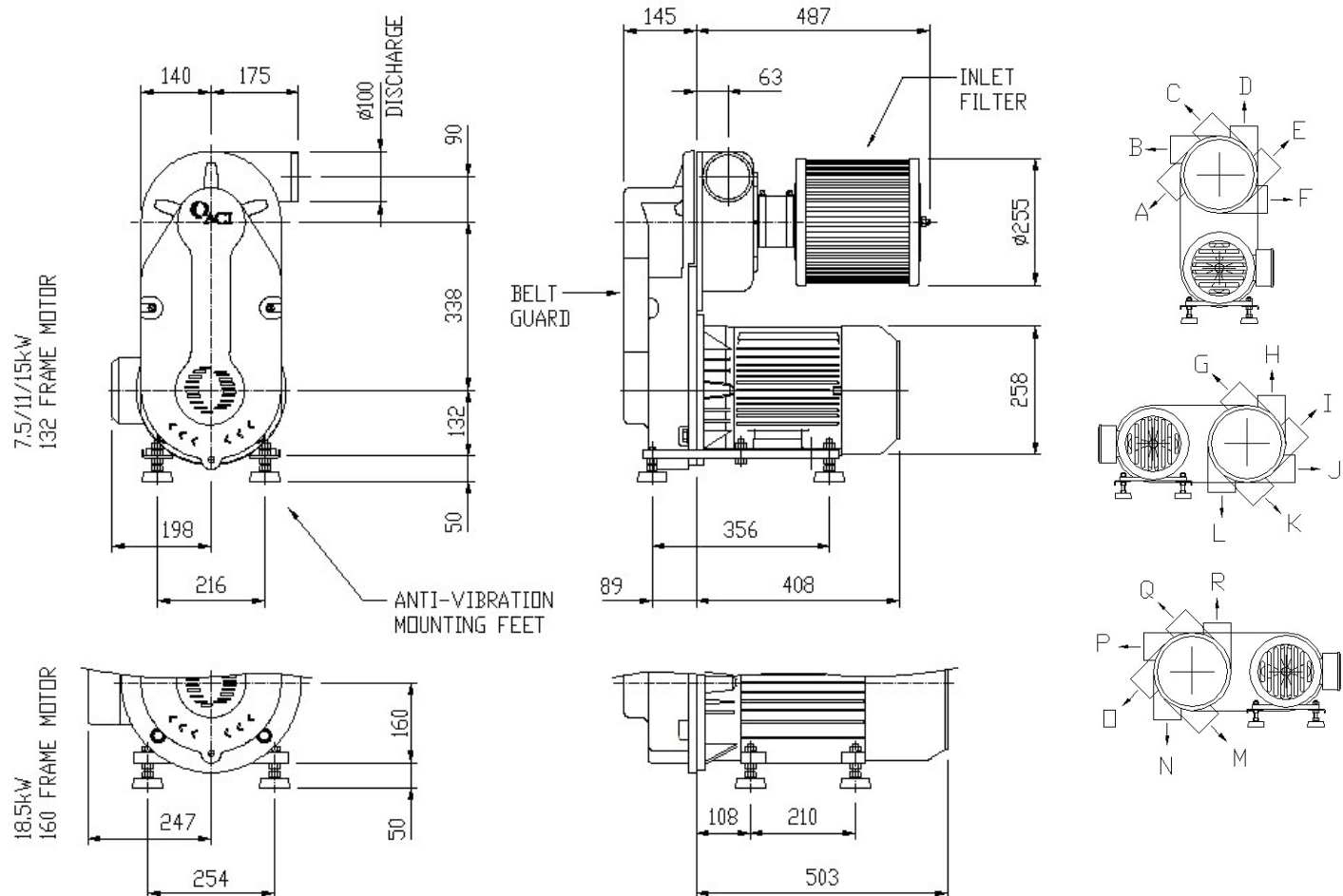
General Characteristics:



Motor type:	Induction type / TEFC / IP55
Nominal supply:	380-420VY / 660-690Y 3Ph 50Hz 440-480D 3Ph 60Hz
Materials:	Main housing assembly: Aluminium Impeller: Aluminium Shaft Assembly: Hardened tool steel Drive Pulley: Steel Motor Pulley: Aluminium
Mounting options:	Anti vibration feet
Noise levels:	82-91dB(A) Free Air, 1M (dependant on blower speed)
Weight:	70.0Kg / 154Lbs (7.5kW motor plus fan)
Variations:	Hot-air version / Available in Metric and NEMA frame versions

[Please note - image above may not be representative of the unit supplied]

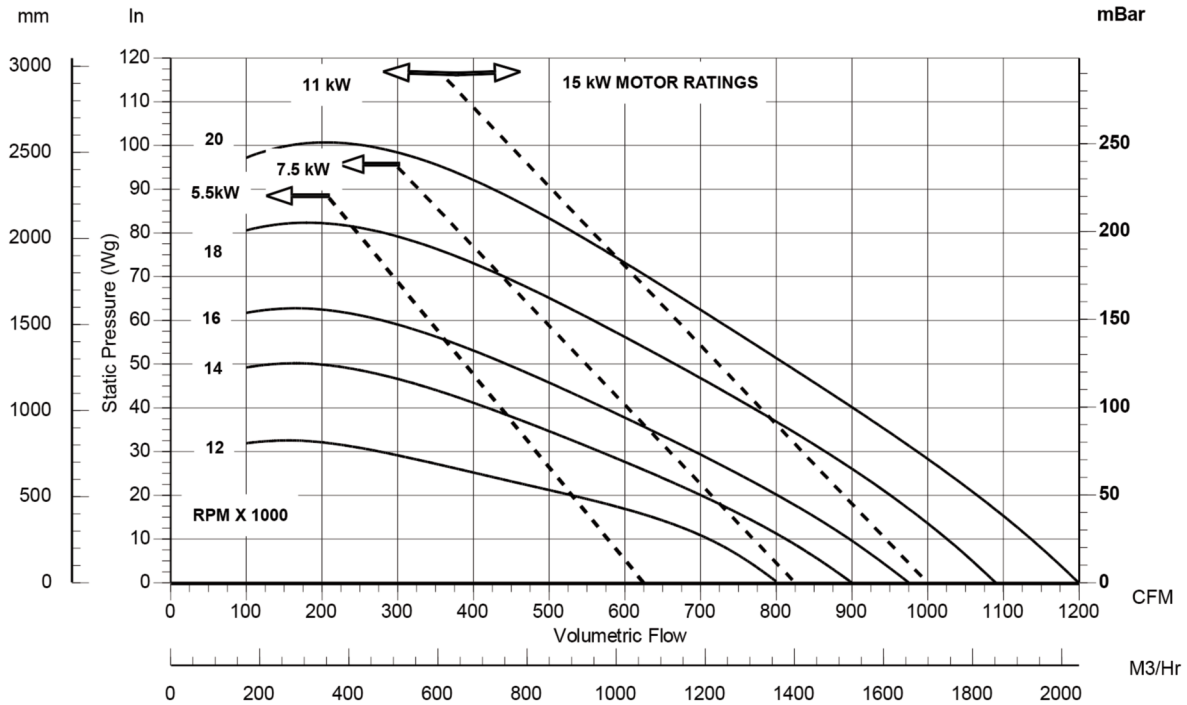
Outline dimensions:



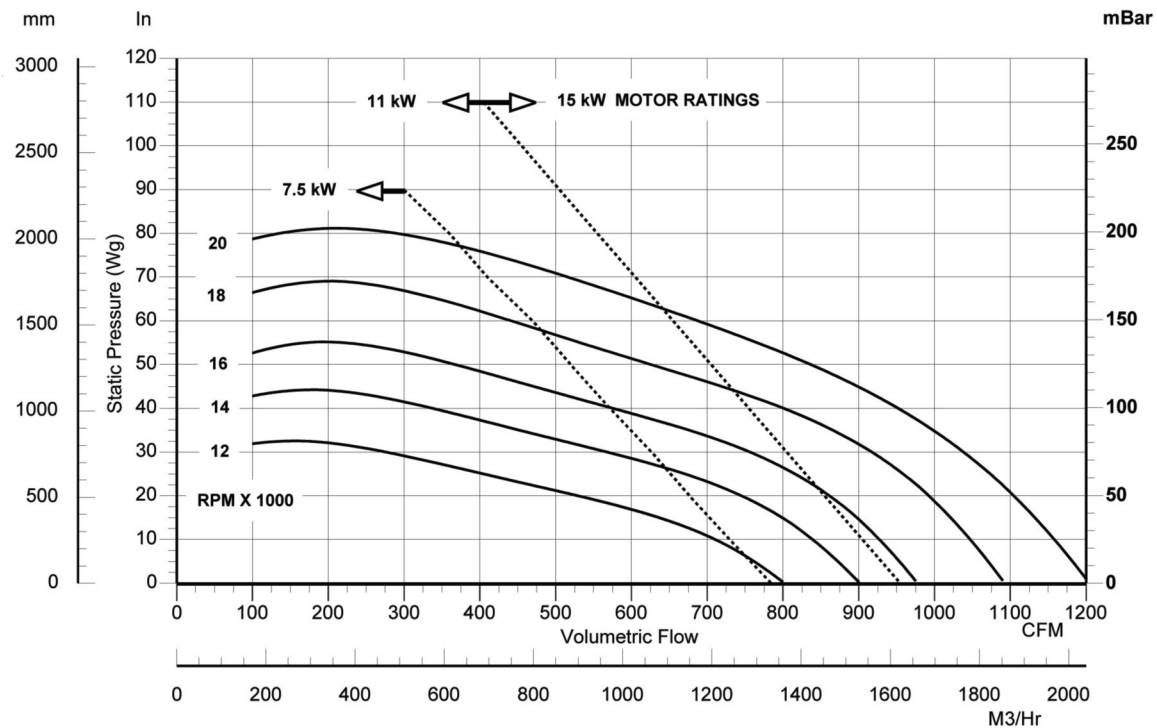
EP10A Compact

Belt Driven Centrifugal Blower

Pressure performance curves:



Vacuum performance curves:



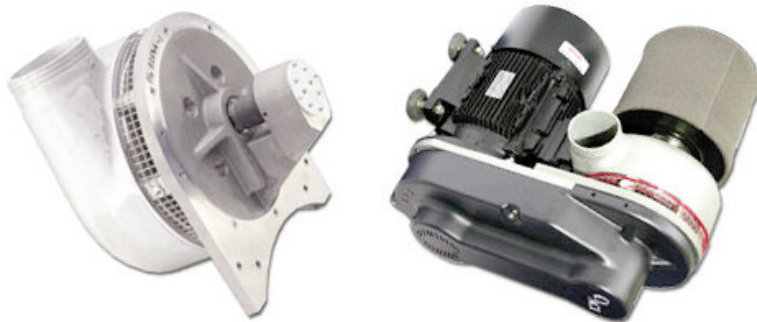
Please note (1) - all drawings measurements are in millimeters (mm)
Please note (2) - above technical specifications are subject to change

AIR CONTROL INDUSTRIES LTD
Weycroft Avenue, Millwey Industrial Estate,
Axminster, Devon, EX13 5HU
t: +44(0)1297 529242 f: +44(0)1297 529241
e: sales@aircontrolindustries.com
w: www.aircontrolindustries.com

EP10AH Compact

Belt Driven Centrifugal Blower (Hot Air)

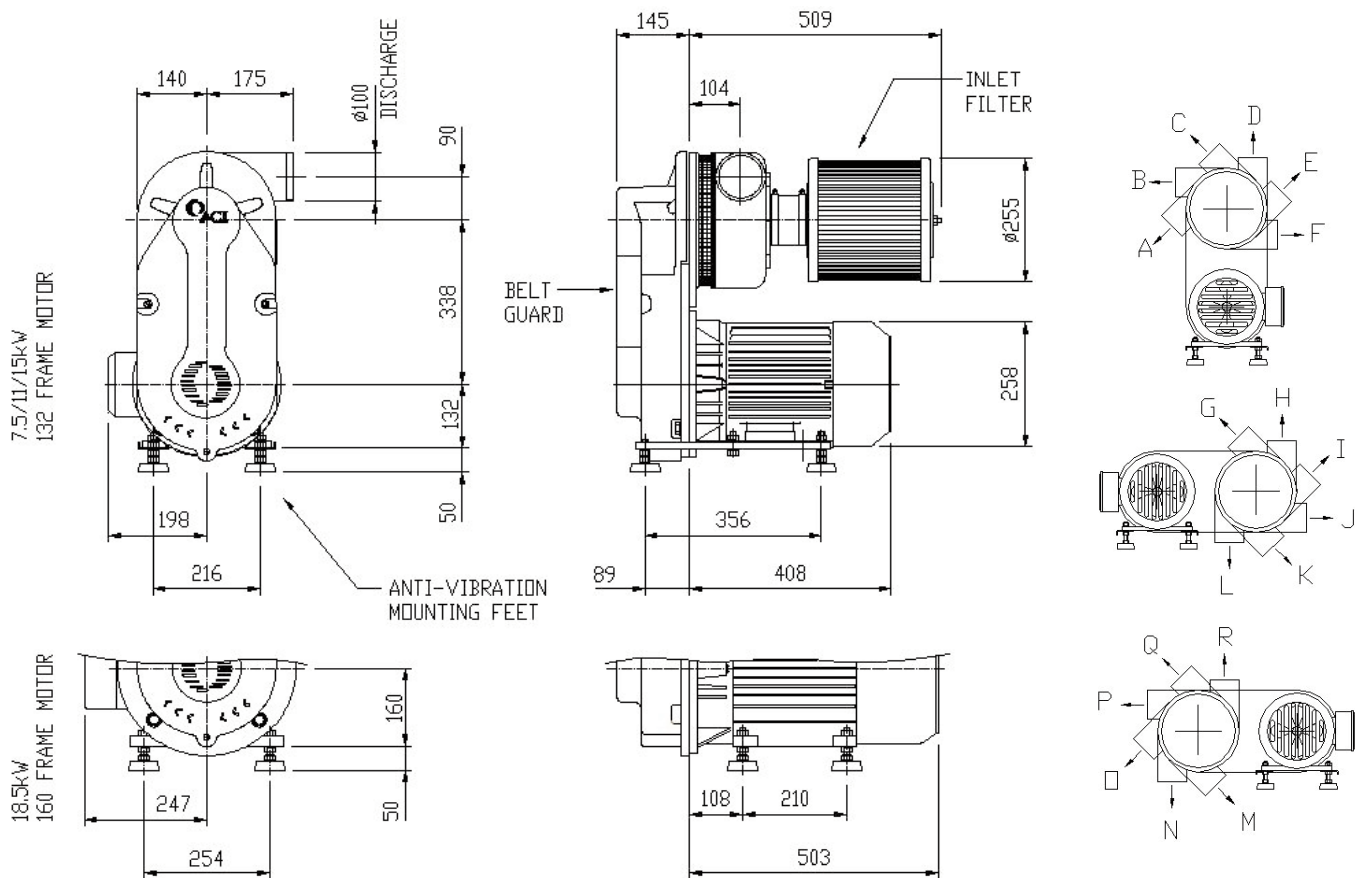
General Characteristics:



Motor type:	Induction type / TEFC / IP55
Nominal supply:	380/420VY / 660-690Y 3Ph 50Hz 440-480D 3Ph 60Hz
Materials:	Main housing assembly: Aluminium Impeller: Aluminium Shaft Assembly: Hardened tool steel Drive Pulley: Steel Motor Pulley: Aluminium
Mounting options:	Anti vibration feet
Noise levels:	82-91dB(A) Free Air, 1M (dependant on blower speed)
Weight:	70.0Kg / 154Lbs (7.5kW motor plus fan)
Processing Temperatures	Maximum air inlet temperatures of 185 deg.C

[Please note - image above may not be representative of the unit supplied]

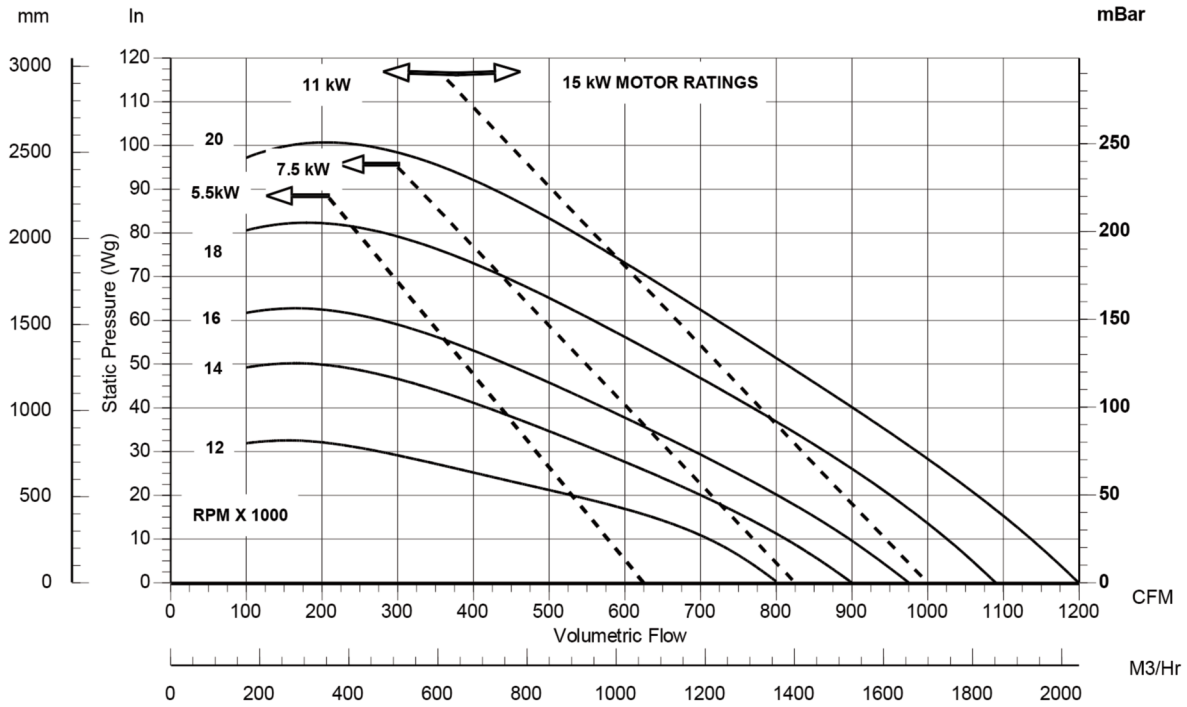
Outline dimensions:



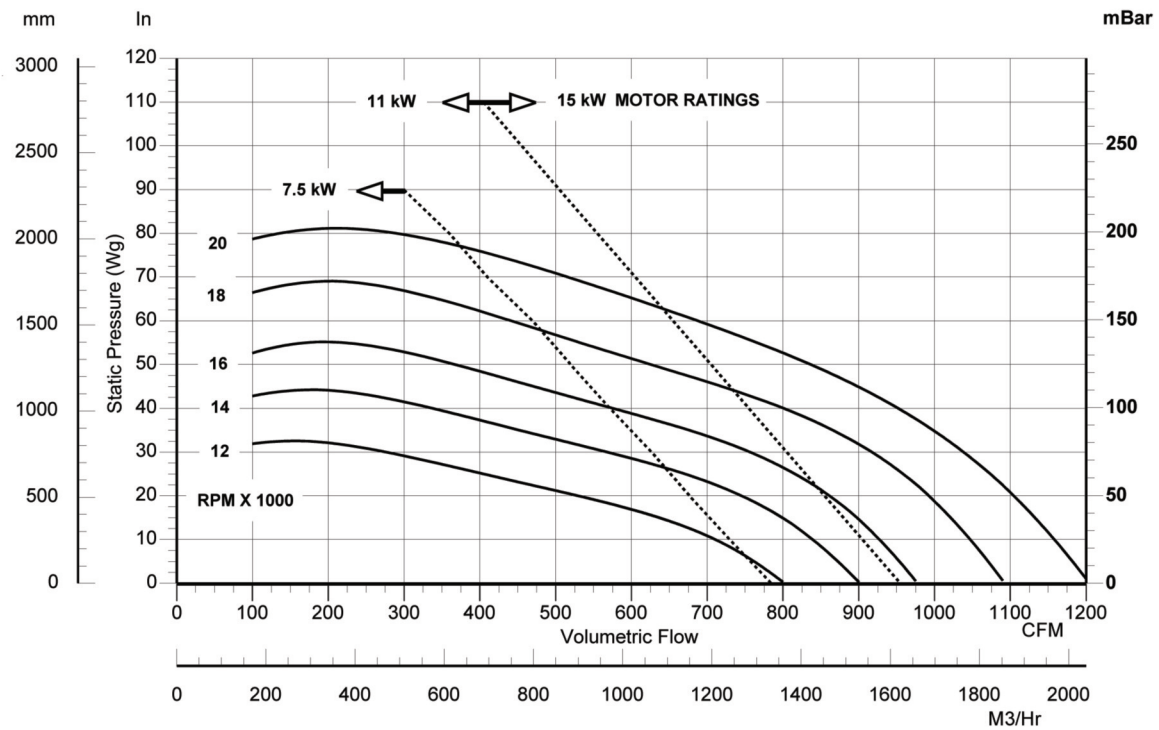
EP10AH Compact

Belt Driven Centrifugal Blower (Hot Air)

Pressure performance curves:



Vacuum performance curves:



Please note (1) - all drawings measurements are in millimeters (mm)
Please note (2) - above technical specifications are subject to change