

# Techconnect<sup>3</sup>

[Visionaudiovisual.com/techconnect](http://Visionaudiovisual.com/techconnect)

## Improvements

### BETTER LOOKING

- Modern matt finish
- Pure white
- Chiselled shape
- Surround screws hidden

### STRONGER

- Modules 7mm shorter = less bend if cable pulled
- Ribs on some modules to reduce flex

### EASIER TO WORK WITH

- Modules removed from front (surround stays in place)
- Module screw pre-installed and only require a few turns

### OVERCOMES OBJECTIONS

- Modules now labelled
- Modules attach with screw (some installers don't trust clips)
- More flat space on surround for reseller branding
- Better fit and finish

### COMPATIBILITY

- Modules not backwards-compatible
- New surround fits old backbox

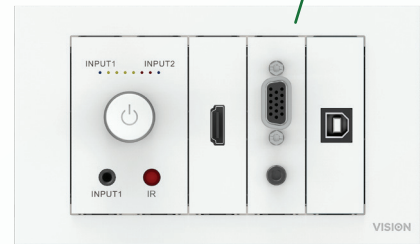
### PRICING

- No change

### CABLES

- No change to cable skus

Smaller and more even gaps.



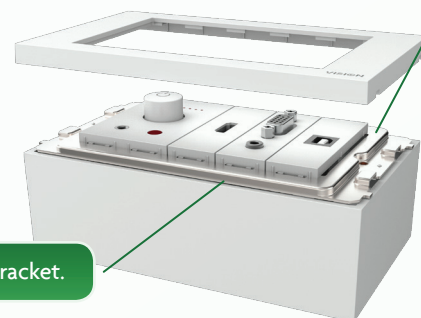
Screw pre-installed in module and can't fall out when undone. Only a few turns to fix.



Tabs hook into metal surround.

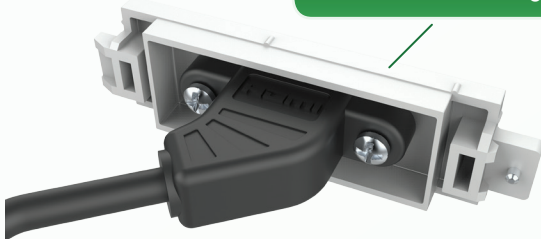
New look Amp module with rotary dial.

Fit modules then clip plastic surround on.

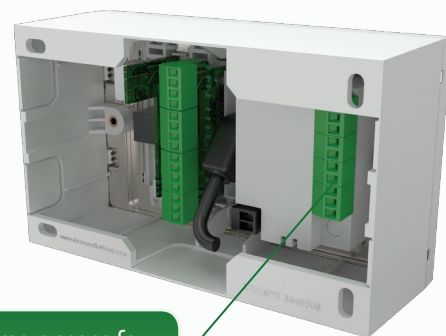


Metal surround included with bracket.

Ribs to reduce flexing.



No back allows more space for cables and easier to install.



# VISION



Audio



Control



Mounts



Media Players



Room Booking Displays



Modular Faceplates



AV Cables



HDMI over IP



HDMI over Power



Wireless HDMI

PACKAGES	
TC2-LT	→ TC3-PK <span style="color: red;">●</span>
TC2-LT3MCABLES	→ TC3-PK3MCABLES
TC2-LT5MCABLES	→ TC3-PK5MCABLES
TC2-LT10MCABLES	→ TC3-PK10MCABLES
TC2-LT15MCABLES	→ TC3-PK15MCABLES
TC2-10MHUBPACK	→ TC3-10MHUBPACK <span style="color: green;">●</span>
TC2-AMP4	→ TC3-AMP <span style="color: purple;">●</span>
TC2-CTL3	→ TC3-CTL

SURROUNDS / BACKBOXES	
TC2 BACKBOX1G	→ TC3 BACKBOX1G
TC2 BACKBOX2G	→ TC3 BACKBOX2G
TC2 BACKBOX2GT	→ TC3 BACKBOX2GT
TC2 MUDRING1G	→ no change
TC2 MUDRING2G	→ no change
TC2 SURRE1G	→ TC3 SURRE1G
TC2 SURRE2G	→ TC3 SURRE2G
TC2-TILT2	→ TC3-TILT <span style="color: teal;">●</span>
TCAU SURRE2	→ TC3 SURRAU2M
TCAU SURRE3	→ TC3 SURRAU3M
TCDE BACKBOX2G	→ TC3 SURREBE65

SURROUNDS / BACKBOXES NOT CARRIED OVER	
TCAU MUDRING	
TCAU PWR	
TCDE SURRE2G	
TCFR SURRE45	
TCFR SURRE65	
TCUS SURRE2G	
TCUS SURRE3G	

MODULES	
TC2 2HOLE	→ TC3-TILTPTU <span style="color: blue;">●</span>
TC2 2RJ45	→ TC3 2RJ45
TC2 3.5MM	→ TC3 3.5MM
TC2 3PHO	→ TC3 3PHO
TC2 ADAPTOR	→ No change
TC2 BLANK	→ TC3 BLANK
TC2 HDMI	→ TC3 HDMI
TC2 HDMI TP	→ TC3 HDMI TP
TC2 PWREU	→ TC3 PWREU
TC2 RJ45	→ TC3 RJ45
TC2 SERIALM	→ TC3 SERIALM
TC2 SPEAKER	→ TC3 SPEAKER
TC2 SPEAKON	→ TC3 SPEAKON
TC2 USBA	→ TC3 USBA
TC2 USBB	→ TC3 USBB
TC2 USBB+	→ TC3 USBB+
TC2 USBTP2	→ TC3 USBTP <span style="color: darkblue;">●</span>
TC2 VGAF	→ TC3 VGAF
	→ TC3 VGAFD <span style="color: orange;">●</span>
TC2 VGAF3.5MM	→ TC3 VGAF3.5MM
TC2 VGAF3.5MMD	→ TC3 VGAF3.5MMD
TC2 VGATP	→ TC3 VGATP
TC2 XLR FJACK	→ TC3 XLR FJACK

MODULES NOT CARRIED OVER	
TC2 1PHO	
TC2 2PHOVOL	
TC2 F	
TC2 PWRUK	
TC2 SVID2PHO	
TC2 TB	
TC2 TOSLINK	
TC2 VGAM	
TC2 XLRM	

- The new packs drop the Phono module (and phono cables) and add HDMI.
- No longer a module. Includes new TILT surround with slotted table box which allows cables to be pulled up.
- We have a HUB kit which has a web page of its own. TC3 version will change to “letterbox” TC3-TILT surround.
- New rotary dial. 3mm shallower.
- Now USB 2.0
- Only new sku. Female to female VGA adaptor.
- Becomes alternative Metal surround. Attaches to backbox/mudring (sold separately). Can be used on wall faceplate like letterbox. Overcomes “can’t use plastic faceplate in corporate environment”

# VISION



Audio



Control



Mounts



Media Players



Room Booking Displays



Modular Faceplates



AV Cables



HDMI over IP



HDMI over Power



Wireless HDMI