

# Installation Instructions

for use by heating contractor



## Control Console

for Vitodens 200-W, type WB2B boilers

Part Number: 7838384, **WB2B 19 to 60**  
7838386, **WB2B 80, 105**

---

### Safety and Installation Requirements

Please ensure that these instructions are read and understood before starting any service work. Failure to comply with these instructions may cause product/property damage, severe personal injury and/or loss of life.

#### Working on the equipment

The installation, adjustment, service and maintenance of this product must be performed by a licensed professional heating contractor who is qualified and experienced in the installation, service, and maintenance of hot water boilers.

There are no user serviceable parts on the boiler, burner or control.

Ensure that main power to the equipment being serviced is off.

Ensure that the main fuel supply valve to the boiler is closed.

Take precautions to avoid accidental activation of power or fuel during service work.

Do not perform service work on any component part without ensuring safe operation of the heating system. When replacing parts, use original Viessmann or Viessmann approved replacement parts.

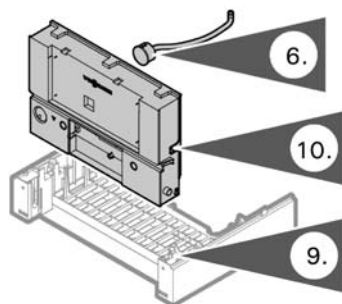
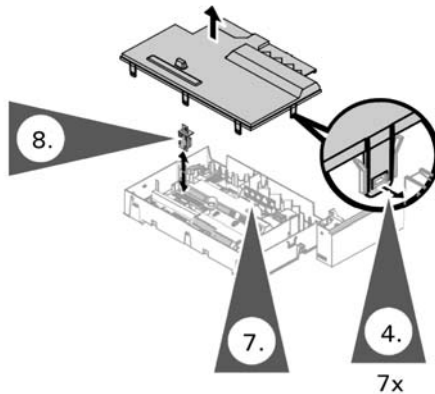
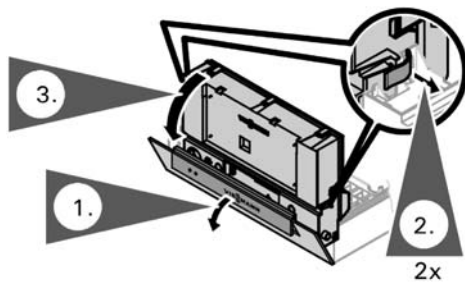


Refer to the Installation and Start-up/Service Instructions applicable to this boiler.



When handling static sensitive components, avoid damage caused by static discharge by following Electro-Static Discharge safety procedures.

## Control Console Replacement



1. Open hinged cover of the control unit (by exerting slight pressure with fingertip). Lift cover and pivot control unit flap down. Remove programming unit located behind the control unit flap.
2. Release the red hinged hooks located on both sides of the control unit.
3. Fold down the control unit.
4. Release locking tabs as shown.
5. Remove cover.
6. Unlock and remove pressure gage from the control console.
7. Remove all harness plugs from the control sockets.
8. Remove coding card.
9. Squeeze and remove control retaining clips.
10. Lift and remove control console from housing.
11. Replace all the jumper plugs and coding cards from the old control console.
12. Place the new control console into the housing and secure with clips.
13. Reinstall all the wiring harness plugs and secure the cables to the control base using existing strain reliefs as shown.
14. Verify coding card part number with the coding card table.

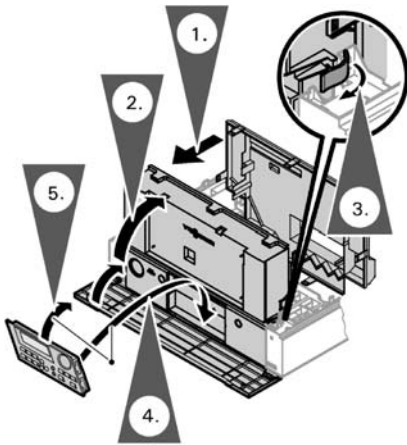
### Altitude coding cards

Model Number	Coding Card Number	
	0 - 5,000 ft. (0 - 1,500 m)	5,000 - 10,000 ft. (1,500 - 3,000 m)
Vitodens 200-W WB2B 19	7832 264 <sup>*1</sup> or 7833 221 <sup>*1</sup>	7825 953 or 7424 902
Vitodens 200-W WB2B 26	7832 265 <sup>*1</sup> or 7833 223 <sup>*1</sup>	7425 954 or 7424 903
Vitodens 200-W WB2B 35	7832 266 <sup>*1</sup> or 7833 225 <sup>*1</sup>	7425 955 or 7424 904
Vitodens 200-W WB2B 45	7832 267 <sup>*1</sup> or 7833 227 <sup>*1</sup>	7425 956 or 7424 905
Vitodens 200-W WB2B 60	7832 268 <sup>*1</sup> or 7833 229 <sup>*1</sup>	7425 957 or 7424 906
Vitodens 200-W WB2B 80 (NG only version)	7832 269 <sup>*1</sup> or 7833 231 <sup>*1</sup> 7834 885 <sup>*2</sup>	7425 958 or 7424 907 7834 886 <sup>*2</sup>
Vitodens 200-W WB2B 105 (NG only version)	7832 270 <sup>*1</sup> or 7833 233 <sup>*1</sup> 7834 887 <sup>*2</sup>	7425 959 or 7424 910 7834 888 <sup>*2</sup>
Vitodens 200-W WB2B 80 (NG/LP Boiler Part No. 7424 193)	7833 390 <sup>*1</sup>	7428 965
Vitodens 200-W WB2B 105 (NG/LP Boiler Part No. 7424 194)	7833 391 <sup>*1</sup>	7428 966

<sup>\*1</sup> Factory Installed

<sup>\*2</sup> If burner has been replaced with new style (Part number 7832 826)

## Reinstalling the Control Unit



1. Install the cover onto the control board.
2. Flip the control board back into position.
3. Secure the locking tabs as shown.
4. Install the Vitotronic, programming unit.
5. Close the control unit cover.

## Resetting Coding Addresses to the Factory Default Setting

1. Press “” + “ ” simultaneously for approx. 2 sec.
2. Press “”, “Factory set? Yes” appears.
3. For Vitotronic 200 type H01: Press “” to confirm.
4. For Vitotronic 100 type HC1: “/ ” to select “Factory set? No”.

## Setting System Parameters

The control must be set to the type of heating system it will control. Refer to coding level 1 or 2 as indicated in the boiler service instructions.

## Additional Coding Addresses

In conjunction with installing a new control the following new coding addresses are adjustable.

Coding (factory default setting)		Possible change	
16:50	Boiler is set-up during cyclic calibration depending on heating curve. If boiler start-up point is, because of heating curve, higher than 122° F (50° C), the boiler starts up at 50° C	16:30 to 16:127	The start-up point for calibration is adjustable from 86° F (30° C) to 261° F (127° C) (limited by boiler specific max. parameters)
17:42	If there is an urgent calibration the boiler starts up depending on the heating curve. If start-up point is, because of heating curve, higher than 108° F (42° C), the boiler is starts up at 42° C	17:30 to 17:127	The start-up point for calibration is adjustable from 86° F (30° C) to 261° F (127° C) (limited by boiler specific parameters)
51:0	Boiler pump (20) always runs when there is a heat demand and boiler set point below warm weather shutdown. (only in conjunction with low loss header)	51:1	System with low-loss header: Boiler pump (20) will only be started when there is a call for heat (with a 60 sec. Delay-off time).
		51:2	System with DHW tank: Boiler pump (20) will only be turned on if there is a call for heat and burner is running

## Additional Fault Codes

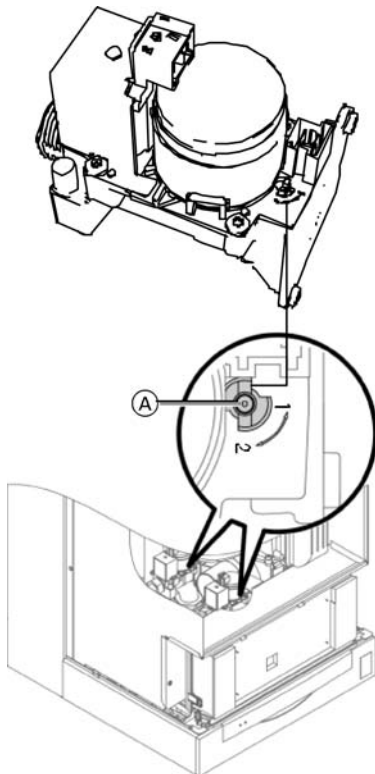
In conjunction with installing a new control, the following fault codes may be additionally displayed.

Fault code	System behavior	Cause	Corrective action
E1	Burner in fault mode	The ionization current is too high while calibrating.	Check distance between ionization electrode and burner tube (see service instructions). Avoid dust in combustion air, if burner is provided with room air. Press "RESET".
E2	Burner in fault mode	Flow through the boiler is too low while calibrating. Flow sensor shuts off.	Ensure that there is sufficient flow. Check flow sensor. Remove calcification, plugging. Press "RESET".
E3	Burner in fault mode	Boiler can't get rid of heat. Temperature sensor shuts off	Heat generated by boiler must be removed. Press "RESET"
E7	Burner in fault mode	The ionization current is too low while calibrating	Check ionization electrode (see service instructions). - distance to burner tube - Contamination of ionization electrode - Check connection cables and plugs Check flue gas system, avoid flue gas backflow. Press "RESET".
EA	Burner in fault mode	The ionization current lies outside the permissible range during calibration	Check flue gas system, avoid flue gas backflow. Avoid dust in combustion air, if burner is provided with room air. Press "RESET". Change coding card if boiler still shows same fault code after several attempts to reset. Press "RESET".
Eb	Burner in fault mode	Boiler control initiated a combustion calibration but could not complete the process	Check distance between ionization electrode and burner tube (see service instructions). Check gas type. Check flue gas system, avoid flue gas backflow. Press "RESET".

Printed on environmentally friendly (recycled and recyclable) paper.



## Setting Fuel Type – Converting to LPG



1. Set the adjusting screw (A) at the gas valve to "2". (using a hex key, 2.5 mm).
2. Switch ON/OFF switch "I" to ON.
3. Call up coding level 2.
4. In coding address "11" select value "9".
5. In coding address "82" select value "1" (operation with liquid propane gas).
6. Go back to coding address "11" and select any value except "9".
7. Terminate coding level 2 and open gas shut-off valve.

The vitodens 200-W, WB2B boiler comes factory adjusted for operation with natural gas. Coding address "82" is set to "0" (operation with natural gas) in the factory default setting.

**Note:** The system automatically terminates the parameter change after approximately 25 min., if setting the parameters is not concluded via coding address "11".



Refer to the Installation and Start-up/Service Instructions applicable to this boiler.

Viessmann Manufacturing Company Inc.  
750 McMurray Road  
Waterloo, Ontario • N2V 2G5 • Canada  
TechInfo Line 1-888-484-8643  
1-800-387-7373 • Fax (519) 885-0887  
www.viessmann.ca • info@viessmann.ca

Viessmann Manufacturing Company (U.S.) Inc.  
45 Access Road  
Warwick, Rhode Island • 02886 • USA  
TechInfo Line 1-888-484-8643  
1-800-288-0667 • Fax (401) 732-0590  
www.viessmann-us.com • info@viessmann-us.com

Technical information subject to change without notice.