



Design. Maintain. Upgrade.

Are you getting the best out
of your building systems?

Whether you're designing new technology solutions or upgrading existing ones, we have the products and design tools you need to help you maximise efficiency.

Contents

- 03 HIGHLIGHTS
- 04 ELECTRONIC DEVELOPMENT BOARDS
- 05 SENSOR SOLUTIONS
- 06 PASSIVES
- 07 SWITCHES, RELAYS AND POWER
- 08 BUILDING TECHNOLOGIES
- 09 LED DEVELOPMENT KITS
- 10 CABLES, CONNECTIVITY & ACCESSORIES
- 12 DESIGNSPARK
- 13 CASE STUDY
- 14 T&M FOR DEVELOPERS
- 15 T&M FOR MAINTAINERS
- 16 COMMERCIAL LIGHTING
- 17 COMMERCIAL & INDUSTRIAL LIGHTING
- 18 INDUSTRIAL LIGHTING
- 19 LEDVANCE
- 20 HVAC
- 21 SECURITY & NETWORKING
- 22 CHEAT SHEET
- 23 SCHNEIDER ELECTRIC
- 24 BUILDING AUTOMATION & SENSING
- 25 MOFLASH
- 26 PHOENIX CONTACT
- 27 PPE & SAFETY
- 28 CONSUMABLES
- 29 TRESTON & KNIPEX
- 30 BAHCO
- 31 TOOLS & STORAGE
- 32 SPECIAL OFFERS

Join the conversation @ RS South Africa



Terms & Conditions

To view our latest prices, charges and full terms see RS Conditions of Sale as set out online at za.rs-online.com. Prices correct at the time of going to print, prices include VAT.

Published by: RS Components Limited.
Registered office: No.20 Indianapolis Street,
Kyalami Business Park, Midrand, 1684

RS Components Ltd 2018.
RS are trademarks of RS Components Limited.
An Electrocomponents Company.



Building Technologies— Improving Today, Designing Tomorrow

Your company's premises are important.

From the offices to the factory floor, from the warehouse to laboratories all of these environments need maintaining and can be upgraded for greater efficiency. The building technology of tomorrow also needs to be designed and developed. We can help those designing future products which will enable our buildings to be smarter, easy to work in, and more connected.

Design.

We are showcasing in this publication products, that you can use to develop tomorrow's new building systems, as IoT becomes a focus area we look at current Microprocessor, LED Development Boards and Sensor solutions.



Maintain.

In today's cost conscious world, maintaining the infrastructure you have today using the most cost effective products is a focus for many companies, we have some great products to help you achieve this.



Upgrade.

Sometimes maintaining the existing solution costs more than upgrading it or the cost of the energy needed to maintain it, we recognise that you need options to consider when planning your upgrade, we have a good cross section of products you can review to start your upgrade journey.



High Bay LED Luminaires

- Designed to meet the most demanding specification criteria while offering maximum energy savings, reduced maintenance costs, and a superior quality of light
- Instant on-off
- Reflector based optics for precise light control
- Resistant to shock and vibration
- Temperature compensation technology for long life
- 5 year warranty



Dialight

777-7384 146W, 11750lm

R16 782,07

777-7397 172W, 17500lm

R23 565,85

ClimaSys DTThermal Logger

- ClimaSys DT USB dataloggers allow you to accurately analyse the temperature, humidity levels, and dew points inside and outside your control panels
- This data can then be analysed with FREE ProClima thermal software to determine the optimal thermal solution for each of your control panel installations
- Three options are available: temperature only, temperature & relative humidity, and single use temperature

NEW



Schneider Electric

175-4969 Temperature, 32K - NSYDTEF32T

R4 224,64

175-4970 Temp+Humid+Dew Point, 32K - NSYDTEF32TRH

R6 789,60

175-4971 Single Use Temp, 32K - NSYDTEFSMT

R905,28

VDE Interchangeable Blade Screwdriver Set

- 16-piece 1000V approved driver and blade set for live working on energised systems
- Ergonomic bi-component driver handle design fits the hands contours giving improved grip
- Reduced blade diameters for access to sunken screws
- Complete with single pole voltage tester
- Set contains: hexagon, pozi, phillips, slotted and torx bits
- For full details visit our website



Wera
SI A TOOL FOR EVERYTHING

775-5665

R1 008,76

Multi-Sensor IoT Development Kit

- The following sensors on this board:
 - Relative humidity and temperature sensor
 - UV index and ambient light sensor
 - Hall effect sensor
 - Indoor air quality gas sensor
 - 6-axis inertial sensor
 - Barometric pressure sensor



SILICON LABS

171-7023

R831,30

Ovalgrip Cable Marking Kit

- Self-extinguishing PVC captive cable marking system
- Oval shaped, ideal for marking electrical or security cables and wires
- Supplied in a robust case containing 4800 markers
- 200 each of the following: Numbers 0-9, Letters A,E,I,L,N,R,S,T,V, +/-/Earth symbols and blank red, blue, and brown markers



HellermannTyton

364-6722 1.8 → 6.3mm slide on market kit

R1 357,58

Wireless Programmable Thermostat

- Consists of a transmitter and a receiver with 30 metre range
- 7 day or 5-1-1 programming as required
- RF Address Code Setting is built into the RF receiver as part of the commissioning procedure that the receiver will only respond to instructions sent to it from transmitter
- Blue/red LED backlit keys and screen
- 3 separate working frequencies
- Transmitter is powered by 4 x AAA batteries

3 YEAR WARRANTY



RS PRO

719-4152

R1 240,76

Double Action Pneumatic Profile Cylinders

- ISOline™ profile cylinders - high performance, stability and reliability
- Polyurethane seals ensure efficient low friction operation and long life
- ISO15552 compliant

NEW



IMI NORGREN

164-7056 40mm Bore, 50mm stroke

R2 677,21

164-7057 40mm Bore, 80mm stroke

R2 764,12

164-7049 40mm Bore, 100mm stroke

R2 822,66

164-7050 40mm Bore, 125mm stroke

R2 895,39

164-7051 40mm Bore, 160mm stroke

R2 997,08

164-7052 40mm Bore, 200mm stroke

R3 114,17

164-7053 40mm Bore, 250mm stroke

R3 259,01

164-7055 40mm Bore, 320mm stroke

R3 463,00

Cortex M7 Discovery Development Board

- 216MHz Cortex-M7 core microcontroller with 2MB Flash memory, 532KB RAM
- MicroSD card slot
- Arduino Uno V3 format Shield connectors
- Comprehensive free software including various examples, part of STM32Cube package
- Supported by a wide choice of integrated development environments
- Order 123-1055 if you require 4in 800 × 480 capacitive touch LCD display panel

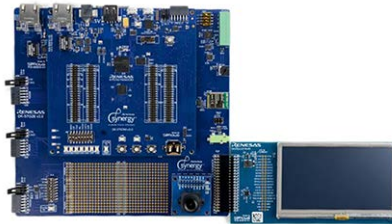


124-1568

R1 025,24

Synergy Development Kit for Cortex M4

- The kit has three boards, MCU main board, camera module, breakout board with touchscreen
- 240MHz Cortex-M4 32-bit MCU with 4MB Flash memory, 640KB SRAM
- Full access to all synergy S7G2 MCU pins, features, and SSP
- On-board 16MB QSPI Flash memory, 16MB SDRAM, 2GB eMMC
- 4.3in WQVGA TFT LCD touchscreen display
- 4 × Type 2A Pmod connectors
- VGA camera parallel-data, I²C-control interface
- MicroUSB debug connector



123-4602

R10 295,65

Raspberry Pi Compute Module 3 Dev Kit

- The Kit is for designers who like the Raspberry Pi 3 functionality
- The CM3 is provided on a DDR2-SODIMM for connectivity only
- Raspberry Pi Compute module 3 (RS 1232011) 1 Gbyte LPDDR2 RAM
- Raspberry Pi 3 compute module I/O (RS 1232013)
- Official White Raspberry Pi Power Supply (RS 9098126)
- Raspberry Pi guarantee the availability of CM3 and CM3 Lite until at least January 2023.



127-0226

R2 620,22

System on Module (SoM) 32Bit Cortex A5 Eval Kit

- Fast prototyping platform for the SAMA5D2 based System in Packages (SiPs)
- CryptoAuthentication™ device ATECC508 (populated but not provisioned)
- LCD RGB 24-bit interface (50-pin FPC connector)
- Camera 12-bit interface (2×15 male connector)
- Tamper connector
- PMOD connector
- 2× mikroBUS connector



165-5130

R5 761,01

STM32L4 (Cortex M4) Evaluation Board

- The STM32L4 is an ultra-low-power microcontroller
- Based on the Arm® Cortex®-M4 32-bit RISC core
- They operate at a frequency of up to 120 Mhz
- The Cortex-M4 core also implements a full set of DSP (digital signal processing)



165-3241

R7 513,28

NUCLEO-144 Cortex M4 Prototype Board

- STM32 Nucleo-144 provide a flexible way to try out new concepts and build prototypes
- The ST Zio connector, which extends the Arduino™ Uno V3 connectivity
- ST morpho headers provide an easy means of expanding the functionality
- 3 user LEDs
- 2 user and reset push-buttons
- USB with Micro-AB



164-6931

R446,61

PIC32MZ Embedded Connectivity Dev Kit

- Embedded Connectivity with FPU Starter Kit (Crypto)
- PIC32MZ2048EFM144-I/PH (with Crypto Engine) on-board
- USB Type A Port: For developing PIC32 host applications
- USB Type Micro-AB Port: For developing USB OTG and USB Device apps
- RJ-45 Ethernet Port Daughter Board
- Two Mini-B USB Ports: one for debugging, one for USB-to-UART/I²C
- Compatible with Microchip's Multimedia Expansion Board II



904-8458

R2 439,29

LattePanda 2GB/32GB Computer Licenced

- The LattePanda is a tiny Intel Atom-based Single-Board Computer
- Can run Windows 10, full license included
- A second processor chip is included an ATmega32U4
- Can be programmed as if it were an Arduino Leonardo
- 1.8GHz Intel Atom X5-Z8300 64-bit Quad-Core microprocessor with Intel HD Graphics • 2GB DDR3L SDRAM
- 32GB eMMC Flash memory
- 16MHz ATmega32U4 MCU with 32KB Flash memory, 2.5KB RAM, 1KB EEPROM



124-4684

R2 524,01

X-Band Motion Detector Module

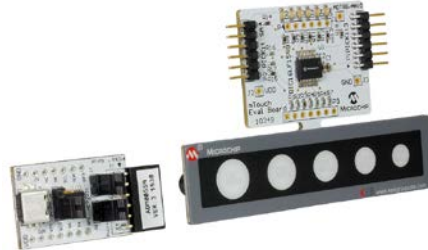
- Operating frequency: 10.525GHz
- Offering direct line of sight detection from roughly 2.4 to 9m.
- Less prone to false triggers than passive infrared (PIR) motion sensors
- Power supply requirement: regulated 5Vdc @ 8mA



781-3074

mTouch Capacitive Touch Development Kit

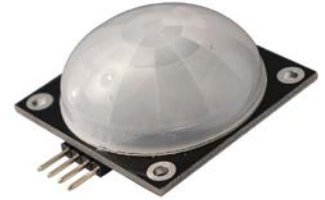
- Flexible capacitive sensing development kit
- Includes sensor array
- Compatible with other sensors
- Includes PIC16LF1559 microcontroller featuring mTouch peripherals
- Utilises MCP2221 USB-I²C Bridge



111-5726

Wide Angle PIR Sensor Module

- Signal can be read by a microcontroller or used to drive an external load
- 180° detection angle for wide area motion detection
- Typically detects people up to 10m away
- User-selectable "night-time mode" for detection after dark only
- Adjustable sensitivity



843-0840

R256,30

Xbee Mesh ZigBee Development Kit

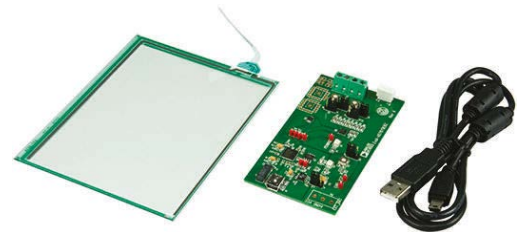
- The ZigBee mesh networking good way to route wireless data
- The Kit uses XBee RF modules for low-data rate and low-power applications
- RF data is transferred from node to node
- Information is able to follow alternative paths in the network when a wireless connection is lost
- You create reliable device communications, working control systems, and sensing networks
- Incredible battery life and robust security



122-5779

Touch Screen Control Evaluation Board

- Easy access to the 12-Bit SAR Analogue-to-Digital Converter (ADC)
- Switches for driving 4-wire resistive touch screens
- Connects to any PC USB port
- Self-contained evaluation system
- Test points for easy access to signals
- Touch screen included



698-1438

R2 311,79

Air Quality click mikroBUS™

- The air quality board is ideal for detecting dangerous gases
- i.e. Ammonia, nitrogen oxides, benzene, smoke and CO₂
- mikroBUS pinout standard
- MQ-135 sensor
- Adjustable potentiometer



882-9020

Optical Sensor Smoke

- This Sensor uses MAX30105 high-sensitivity optical sensor for smoke detection
- Designed to run on either 3.3V or 5V power supply
- It communicates with the target MCU over I²C interface



168-3011

Mult Sensor IoT Development Kit

- The following sensors on this board:-
- Relative humidity and temperature sensor
 - UV index and ambient light sensor
 - Hall effect sensor
 - Indoor air quality gas sensor
 - 6-axis inertial sensor
 - Barometric pressure sensor



171-7023

R831,30

Surge Protection - Data & Signal

- Combined Category D, C, B tested protector
- Suitable for twisted pair signalling
- Very low let-through voltage between all lines - Full Mode protection
- Repeated protection in lightning intense environments
- 20kA Surge Protection
- Strong, flame retardant, polycarbonate housing



175-2603	Maximum Working Voltage 7.79V	R4 049,62
175-2604	Maximum Working Voltage 16.7v	R4 049,62
175-2605	Maximum Working Voltage 36.7v	R4 049,62
175-2606	Maximum Working Voltage 56.7v	R4 049,62
175-2607	Maximum Working Voltage 132v	R4 049,62

Chassis Mount RFI Filter Single Phase

- 250Vac, Single Phase, Up to 400Hz
- Two-stage chassis mount filters in aluminium case
- Extra stage improves common mode performance
- Connection by 0.25in Faston terminals
- High differential and common-mode attenuation



SCHAFFNER		
219-2915	16A	R530,13
219-2892	6A	R326,77
219-2909	10A	R382,32
219-2870	1A	R348,53

High Power Wire Wound Resistor

- 600W
- Low inductance
- Includes mounting hardware and support rods
- Stable high temperature resistance alloy for reliability
- Rated for repetitive duties and high short term overloads



161-7583	4.7Ω ±10%	R1 465,95
161-7584	6.8Ω ±10%	R1 465,95
161-7585	10Ω ±10%	R1 465,95
161-7586	22Ω ±10%	R1 465,95
161-7587	33Ω ±10%	R1 465,95

Power Factor Correction Controller

- Intelligent control, Menu driven handling, Alarm output
- Self-optimising control capability
- Automatic initialisation
- Recall function of recorded values
- Four-quadrant operation (e.g. stand by generator)



460-358		R7 373,83
----------------	--	------------------

Power Factor Correction Capacitor

- Phasecap metallised polypropylene film capacitors
- They are wave cut and feature concentric winding
- Constructed in a cylindrical aluminium case with a threaded stud on the base
- Overpressure disconnector and a ceramic discharge module
- Delta connected, 3 phase



136-6306	3 × 137µF 25kVAR	R4 155,63
136-6312	3 × 164.4µF 30kVAR	R4 844,93
136-6315	3 × 307µF 56kVAR	R10 762,82

Phone,TV,CCTV and LAN surge arresters

- Data-line lightning current and surge arresters
- For use with Telephone lines, COAX, CCTV and Ethernet based networks
- Can be retro fitted without complication
- BS EN 62305-4:2006 is complemented by BS EN 61643-11/12
- Maximum Surge Current 10kA



768-1827		R2 297,44
-----------------	--	------------------

Non-Latching Relay, SPNO, PCB Mount, 12Vdc Coil, 5 A

- Sensitive coil 200 mW
- 8mm creepage and clearance
- Ambient temperature; -40 to +90°C / -40 to +105°C
- Contact material; AgNi



680-2669

Axial Fan, 40 × 40 × 10mm, 9m³/h, 800mW, 12 Vdc

- Long life due to the increased efficiency of the brushless drives
- Ideal for low profile applications
- Can be mounted for blowing or extracting



ebmpapst

R19,35

200-7766

Flying Lead Piezo Switch, IP69K, 1 A, 1NO,

- Piezo switches with large actuation surface
- Voltage Rating 24V ac/dc
- Prominent increases the visibility
- Bushing diameter 30 mm (1.181)
- Easy to clean metal surface
- Very long life expectancy



165-3181

R1 299,98

PCB Mount Reed Relay

- SPDT, Coil Voltage 24Vdc
- Maximum Switching Current AC 0.3A, DC 1A
- Maximum Switching Voltage 110Vac, 30Vdc
- Protection rating IP67
- One changeover contact
- Pitch: 2.54 mm
- Make / carry / break current: 8 / 3 / 3 A max.



Panasonic

217-3318

R160,34

RS Pro Axial Fan, 172 × 51mm, 391m³/h, 22.8W, 12 V dc

- Motor Polarity Protection
- Dual ball bearing internals
- Compact and robust fan design



619-6668

Plunger Microswitch, SP-NO/NC, 15 A @ 250 Vac

- Sealed to IP54 basic
- Mechanical Life: 106 operations
- Operating temperature range: -40 to +85°C
- Long over-travel
- Through-hole mounting



saia-burgess

414-5646

R923,00

Solid State Relay, DC, PCB Mount, SPNO

- Maximum Load Current 6 A
- Maximum Load Voltage 24 Vdc
- Minimum Control Voltage 16 V
- Maximum Control Voltage 30 V
- Package Style SIP4
- Maximum Turn On Time 0.1 ms



457-2868

R435,03

In Line Ducted Fan, 100mm

- Designed and manufactured in the UK
- Can operate in both horizontal and vertical orientations
- Capacitor start and run
- Single direction two speed selectable motor, thermal overload protected
- Infinitely variable speed See RS157-7056 for controller
- 230 Vac mains powered
- IP44 rated



Vent-Axia

892-8713

R5 204,87

Plunger Microswitch, 5 A @ 250 V ac

- SPDT
- Switch material: Silver
- Temp. range: -55°C* to +85°C
- Operating Force 1.69 N



saia-burgess

472-8055

24,17

LED - The Smart Design Choice



We live and work in an environment where lighting is essential and LED's (Light Emitting Diodes) are becoming the light source of choice. LED lighting offers the same brightness as traditional bulbs, LEDs last longer and use a fraction of the energy and hence ideal for most commercial and industrial applications. Let's look into the top four reasons why LEDs are gaining more popularity over the traditional lightings.

1. Energy Efficiency:

LEDs are extremely energy efficient and consume up to 90% less power than incandescent bulbs dramatically reducing energy usage. LED's lumen per watt is high and they are capable of converting about 70% of their energy into light. In comparison, an LED bulb of 9 watt would produce the same amount of light (measured in lumens) as a 60 watt incandescent and will soon out perform fluorescent lighting.

2. Long life:

LEDs are solid state lighting devices that utilise semiconductor material instead of a filament or neon gas. The lifetime of an LED bulb depends on how long it takes for the lumen output of the bulb to decrease to 30%, and hence it is more likely to last longer. On average, an incandescent bulb may last around 1,000 hours, while a fluorescent bulb producing the same amount of light may last around 8,000 hours, and an equivalent LED bulb may last around 25,000 hours.

3. Safety & Environment:

LED bulbs are harmless when broken by accident and emit less UV radiation than any other type of light. An LED bulb produces 1 watt hour, compared to 8 & 25 for incandescent & fluorescent bulbs respectively. They have also been known to cause fires when accidentally come

into contact with flammable materials whereas LEDs are cold and completely safe. Fluorescent bulbs contain a little amount of mercury which means they definitely can't be thrown in the trash, whereas LEDs are made from a semiconductor material and are non-toxic in nature. LEDs are also recyclable and considered "green" or planet-friendly, whereas incandescent and fluorescent bulbs have to be disposed carefully.

4. Smart Control:

Along with the above benefits, LED lighting systems have a great advantage when it comes to monitoring and control. Below are few reasons why LED lighting is a clear winner in this arena.

- i Dimmer/Colour – LEDs are very easy to dim and options are available to use anywhere from 100% of the light to 0.5%. Newer CFL bulbs can be dimmed (ballast dependent) very effectively (down to about 15% of their normal light) while older fluorescent bulbs are often not suitable for dimming. Furthermore, there are millions of colours that can be chosen to set the LED whereas this feature isn't available in incandescent and fluorescent bulbs.
- ii Sensor Integration & Connectivity – There are a number of sensors such as PIR (motion sensors), Daylight sensors & Timer

that are in-built in the LED lighting system. Incandescent and Fluorescent systems don't have any sensors in-built, they have to rely on external switches. To add on, any electronics communication can be easily added such as Cellular 2G/3G, BLE, LoRaWAN, Sigfox or NB-IoT. This will add the ability to control these lights remotely. Once all the setup is done, they can be integrated into the BMS (Building Management Systems) for monitoring & control purposes.

- iii Maintenance – Since LEDs last longer, LED has almost zero maintenance costs and the frequency with which bulbs have to be replaced out is by far the best on the market. Using BMS (Building Management System), you don't have to go and physically check whether or not the bulbs have blown out, which saves energy and time.

With increasing pressure for buildings to be environmentally friendly and energy efficient, the choice of LED lighting seems to be the perfect solution.

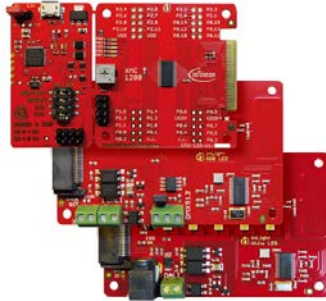
So when you're ready to kick-start your next lighting product design project look no further than RS. Whatever your application we have the technologies, brands and design tools that can help you make your bright idea reality.

LED Building Blocks



LED Lighting Application Evaluation Kit using XMC1200 Microcontroller

- 32-Bit Microcontroller ARM Cortex-M0
- CPU Card with XMC1200 200KB Flash MCU and detachable SEG-GER J-Link debugger
- Colour LED Card with 3 RGB LEDs, ambient light sensor and DALI, DMX & RF connectivity
- White LED Card with 20 LEDs in 4 strings, ambient light and temperature sensors, and DALI & RF connectivity

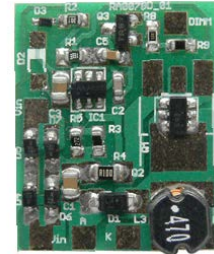


910-6845

R3 089,33

Dimmable LED Demonstration Board Evaluation Board LED Driver

- This is compact switching buck LED driver controller
- Intended for constant current high brightness LED applications
- Used where high efficiency and small size are important
- This board illustrates the NCL30100 in a single-sided PCB layout
- Included is a low voltage AC bridge rectifier
- Designed to accept a PWM input



161-0679

R1 089,87

USB to DALI Lighting Control Dev Kit

- This Lighting Communications Development Platform
- Assists designers in creating communications enabled lighting applications
- Interface adaptors to support the development of DALI and DMX512A based applications



880-6831

R2 171,67

DALI Lighting Communications Dev. Kit

- DALI (Digital Addressable Lighting Interface)
- Commercial and industrial lighting with a 2-wire connection
- DALI Firmware Library is included with simple API



814-8995

mikroBus Click add-on 2-digit 7-seg LED

- mikroBUS™ form factor
- Two 7 segment digits on-board
- 7seg Click connects with target board via SPI interface
- SMD Jumper: Operates on 3.3 V or 5 V power supply
- 2 × 74HC595 serial-in parallel-out shift registers with SPI interface
- Supported in all MikroElektronika compilers"



923-5971

R184,02

Current Regulator LED Driver Evaluation Board

- Inverting buck-boost LED driver evaluation board for LED600
- LED600 is a monolithic current source for driving high-power LEDs
- 15 V to 30 V input voltage
- 8 white LEDs, 0.5 A programmed current
- 500 kHz switching frequency, Digital dimming
- 180° out of phase synchronisation available

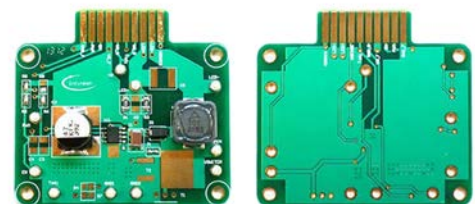


124-1181

R743,82

LED Driver Demonstration Board

- Demo board for the 60V LED Driver ILD6070
- Wide input voltage range from 4.5 V to 60 V
- Up to 0.7 A output current
- Up to 1 MHz switching frequency
- Soft-start capability
- PWM or analogue dimming possible
- Overcurrent protection
- Adjustable over temperature protection



122-2437

R452,74

Flame Retardant, Shielded Cat6a Cable

- Meets Category 6A specification
- Flame retardant
- Lead free
- Fully screened with individually foiled pairs and overall wire braid
- High EMC capability
- Standards met - EN 50173-1, EN 50173-3, IEEE 802.3an, ISO/IEC 11801, ISO/IEC 24702



913-1822	PVC, Black, 20 m	R2 270,86
913-1825	PVC, Black, 50 m	R5 659,10
913-1813	PUR, Yellow, 50 m	R7 376,63
913-1816	PVC, Yellow, 20 m	R2 511,60
913-1819	PVC, Yellow, 50 m	R4 753,11

Power Cables

- 3 core multi conductor cables have a black sheath with a rating of 300 V
- PVC insulation and jacket available with or without an aluminium/polyester foil shield
- Designed for power and flexibility.
- Suitable for consumer and industrial devices, business and communication machines and medical and test equipment.
- UL and CSA certified
- Available in 76 meters length



741-7931	1.32 mm ² , 8.64 mm, 16 AWG	R4 709,14
741-7922	0.82 mm ² , 7.87 mm, 18 AWG	R3 465,78
741-7925	1.32 mm ² , 8.53 mm, 16 AWG	R4 724,84
741-7935	2.08 mm ² , 9.45 mm, 14 AWG	R6 810,22
741-7938	0.82 mm ² , 7.98 mm, 18 AWG	R3 943,55
741-7929	2.08 mm ² , 9.35 mm, 14 AWG	R5 598,97

Flexible Split Conduits

- Ideal for protecting and organizing single and bundled cables.
- Highly flexible and constructed from durable materials.
- Available as solid rigid metal, for when protection from physical shock is paramount, or in PE and PVC material for greater flexibility.
- Standards met - CE



144-3715	24.3 mm ID, 32 mm OD, 3.61 mm, 5 m	R322,89
144-3714	21.2 mm ID, 25.8 mm OD, 3.1 mm, 5 m	R242,91
144-3713	15 mm ID, 19.5 mm OD, 3.5 mm, 10 m	R283,35
755-9026	21.2 mm ID, 25.8 mm OD, 3.1 mm, 10 m	R356,33
875-0258	15 mm ID, 19.5 mm OD, 3.5 mm, 100 m	R1 810,17

HellermannTyton

SmartMeter Clips & Collars

- Quick, Clean & Safe Installation
- No Waste Disposal
- Adaptable to Multiphase
- Captive When Fitted
- Fits Range of Smart Meters
- BS7671 Compliance
- Available in a bag of 1000



176-0780	Smart Meter Collar Blue N	R1 810,56
176-0781	Smart Meter Collar Brown L	R2 021,79
176-0782	Smart Meter Clip Blue N	R1 810,56
176-0783	Smart Meter Clip Brown L	R2 021,79
176-0784	Smart Meter Cable Stripping Tool 25mm	R1 689,86

Cable Tie Guns

- Cut with no protrusions to damage neighbouring components
- Ergonomic design with secure and comfortable grip handle
- Extended slim nose for use in narrow spaces
- Easy to use trigger
- Plastic lightweight fibreglass reinforced housing



187-8882	2.5 to 4.8 mm strap width	R599,27
187-8898	4.8 to 7.6 mm strap width	R630,50
170-4179	Up to 8 mm strap width	R5 043,30
455-188	Up to 9 mm strap width	R4 766,50
126-8893	Up to 13 mm strap width	R8 364,16
143-9310	Up to 13.5 mm strap width, Pneumatic	R91 511,70

RFID Tags & Cable Ties

- Equipment inspection management, maintenance work, asset location and identification
- Speedy data collection
- RFID holds greater amounts of data than barcodes
- Complies with all legislation
- Harsh environment reliability - wet, dusty, dirty conditions, corrosive environments, vibration and shock.
- Standards met - UL94 V2, HF, RoHS
- Available in a pack of 100



176-2222	13.56 MHz, Rewritable, Hextag	R9 958,08
176-2223	13.56 MHz, Rewritable, Cradle	R9 958,08
829-6105	125 KHz, Read only, Cable Tie	R8 072,63
829-6114	13.56 MHz, Rewritable, Cable Tie	R8 072,79

Ovalgrip Slide On Cable Marker

- Low smoke emission, low flammability and low toxicity
- Zero halogen
- Oval shaped, allowing one size to fit a range of cable diameter
- Straight cut for easy alignment
- Characters available are 0-9, A-Z, and standard electrical symbols
- Available in various packages of 250, 500 & 1000



234-8411	"0" White on Black, 1.2 to 2.3 mm, Price Each	R325,29
906-4823	"9" Black on White, 1.8 to 6.3 mm, Bag of 250	R126,87
836-578	"A" Black on Yellow, 2.5 to 6 mm, Bag of 500	R184,29
836-821	"Z" Black on Yellow, 2.5 to 6 mm, Bag of 500	R184,29
282-8844	"+" Black on Yellow, 2.5 to 6 mm, Bag of 250	R133,99
906-4735	"-" Black on Yellow, 1.8 to 6.3 mm, Bag of 500	R168,64

Plastic Industrial Power Socket - IP67

- This panel mounted socket outlet boasts a high level of ingress protection and is well suited to dusty or damp environments.
- With a flip-up cap for extra protection, this socket outlet assures a safe and reliable connection for industrial applications.



410-397	Power Socket, 380 → 415V	R2 99,95
410-359	Power Socket, 200 → 250V	R380,43
410-393	Power Socket, 100 → 130V	R383,94

Din Plugs and Sockets

- Mated connectors offer high water and dust protection.
- Suited for applications including mechanical, measurement and process control.
- The solder bucket contact connectors are available in 9, 12 & 16 ways.
- IP65 rated.
- Power ratings of 1.5 KV, 75A
- Price Each



LAPP GROUP

227-7791	9P, Plug	R259,68
227-7808	12P, Plug	R284,23
227-7814	16P, Plug	R346,07
227-7763	9P, Socket	R267,01
227-7779	12P, Socket	R285,64
227-7785	16P, Socket	R296,07

RCD Adaptors

- Additional protection to the user against electrocution
- Double pole switching isolates both live and neutral when contacts trip
- Power tripping in 40ms if an earth fault is detected
- Power rated at 240 V ac, 13 A



750-8447	Plug	R349,58
750-8450	Non-latching, IP65, Inline	R495,72

molex

Brad Micro-Change Series, M8 & M12 Connector Assemblies

- Optimal signal performance without system noise interference
- IEC compliant M12 cordset assembly
- IP67, NEMA 6 rated for harsh environments
- Anti-vibration feature
- 3, 4 and 5 pole versions are interchangeable
- Available with straight or right angle connector configurations



751-8993	3P, M12 Socket, 2m	R263,19
751-9015	4P, M12 Socket, 10m	R527,14
751-9062	5P, M12 Socket, 5m	R390,41
751-9084	8P, M12 Socket, 3m	R373,76
751-8977	3P, M8 Socket, 3P, M12 Plug, 3m	R367,87
751-9113	4P, M12 Socket, 4P, M12 Plug, 1m	R348,30

Off-the-Shelf Cable Assemblies

- Multi-colour cable configurations with Ultra-Fit TPA, Micro-Fit TPA and Mini-Fit TPA2 Connectors available off the shelf
- Micro-Lock Plus Cable Assembly offers 1.25mm-pitch form factor and carries 1.5 A with positive lock
- Secures mating retention without sacrificing compactness
- Saves engineering time and resources
- Pin-to-pin mapping from receptacle to PCB header



162-4528	1 Row, 2 Way, 450 mm	R41,23
162-4564	1 Row, 3 Way, 300 mm	R47,07
162-4532	1 Row, 4 Way, 300 mm	R45,09
162-4518	1 Row, 5 Way, 450 mm	R49,68
162-4561	1 Row, 6 Way, 600 mm	R64,03

Antennas & Sockets for WiFi, NFC & Cellular

- Wide range of RF antennas covering Dual Band WiFi, ISM Band & Cellular requirements
- ISM Standalone Antenna, dual-band 868 MHz/915 MHz - Patented Mobliqua™ technology
- Rectangular Near Field Communication (NFC) antenna provides 2 way read/write operations
- 2.4 GHz / 5 GHz Balance Wi-Fi Antennas with Cable available in 100mm & 250mm
- The Micro coaxial RF Sockets feature a Tactile lock ensuring full mating.



704-3442	SMA, Magnetic Mount, 870 - 960 MHz, 1710 - 2220 MHz	R289,96
144-5000	NFC, Rectangular, SMD Mount, 13.56 MHz	R43,68
819-7389	ISM, u.FL, Adhesive Mount, 863 - 870 MHz, 915 - 928 MHz	R76,90
907-6510	WiFi Dual Band, Micro-Coaxial, 2.4 - 5 GHz, 250 mm	R61,25
907-6517	WiFi Dual Band, Micro-Coaxial, 2.4 - 5 GHz, 100 mm	R66,41
702-5425	Micro-Coaxial Socket, compatible with u.FL	R38,44
738-5939	u.FL Socket	R32,38

RJ-45 Field Attachable Shielded Plugs

- Fully shielded IDC Connection Best suited for harsh environment and high vibration applications
- IP20 rated Cat6a performance Push to lock coupling 10 Gbit Ethernet



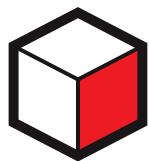
134-8794	8P, AWG 24-22, Straight	R432,38
134-8795	8P, AWG 24-22, Right Angle	R566,21
134-8796	8P, AWG 26-24, Straight	R432,38
134-8797	8P, AWG 26-24, Right Angle	R566,21

DESIGNSPARK

Free, easy to learn and use professional CAD software

Our award winning software is absolutely free to download and use and always will be. Whether you are a professional engineer, hobbyist or a maker, our range of CAD tools are the perfect addition to your design arsenal and are backed up by a huge library of CAD models, and the interactive BOM interface saves you time and money when designing and costing your project.

www.designspark.com



DS
Mechanical

DesignSpark Mechanical is the first free and fully-functional 3D design package to feature intuitive Direct Modelling techniques and give you access to 100 million existing 3D models. Easy-to-use and easy-to-learn, our unique 3D modelling software shortens the time between having an amazing idea and creating prototype designs.



DS
PCB

Take electronics design to a whole new level and join over 250,000 registered DesignSpark PCB users benefitting from powerful features for schematic capture and PCB layout. Professional, accessible and fully-featured, our free and unrestricted PCB design software helps you rapidly prototype so you can make your world-changing ideas a reality.



DS
Toolbox

NEW
now available
for android

There's a great set of useful 'tools' in the Toolbox App. Including the ability to scan RS Barcodes and order directly from within the App, electronic design calculators, lookup tables and get regular news updates and more. So try the Toolbox App now for iOS, Android and Windows desktop devices.



DS
Electrical

DesignSpark Electrical provides a powerful and comprehensive range of professional CAD capabilities, allowing you to complete designs in a fraction of the time and building accuracy and precision into your end-to-end design process.

brought to you by





Helping to light the way for Husco International



Businesses face many challenges when trying to maximise efficiencies in their building systems. Making sure they're energy efficient, reliable and create a productive working environment are all considerations, and that's exactly the challenge that our customer Husco International were faced with recently.

Wanting to focus on upgrading the fluorescent lamps throughout their site, we worked with their team to design a more efficient and cost-effective lighting solution.

What was Husco looking for?

This global company designs and manufactures high-performance hydraulic and electro-mechanical components for the automotive and off-highway industry. Its UK site is located in Runcorn, Cheshire, and features eight production areas of 1,200 m² per unit and an office that's 2,000m².

Husco wanted to upgrade its systems at this site while continuing to create an environmentally friendly and sustainable business that's a better place for its employees to work. After approaching us for support, we designed a lighting system upgrade which saved the company thousands of pounds by cutting energy costs by almost 16% every year.

The upgrade was part of Husco's wider initiative to be more environmentally conscious at all of its sites across the globe; with the work following on from its US branches converting to LED lights.

Husco's site is a manufacturing plant that has large machine areas which were previously installed with twin 5ft fluorescent lights, but they degraded in quality and light emittance. This meant the team at Husco were constantly replacing lamps and adding local lighting which was increasing the site's running costs.

Prior to the upgrade, in some areas the lighting was reading at a level as low as 120 lumens – below the effective lighting level for working with the small parts Husco uses in production.

What did we do?

We assisted in upgrading the lighting systems in its factories and offices by working with our supplier Dialight – a British electronics company and world leader in LED industrial lighting technology for hazardous environments. Husco chose Dialight products due to the exceptionally high quality and 10-year warranty, which reduced their running and maintenance costs long term.

Why choose LED?

By upgrading two sets of lights from 120 twin 5" fluorescent light units to LED downlights, Husco has developed a more economical working environment while saving £7,000 every year on lighting bills.

What was the outcome?

The first stage of work was carried out in 2016, while another production area was completed in 2017 before the next is hopefully upgraded in late 2018. Each stage of the process took approximately two weeks to finish.

The new lighting scheme helps to bring bright, fresh lighting to Husco's facilities. This allows for higher standards of accuracy and quality that also comply with the company's initiative to make environmental improvements and reduce costs. It's also enabled Husco to halve the required amount of fittings – building an efficient business that's easier to maintain.

With this quality of light, Husco's not only saving money but also creating a better working environment for staff, which helps them to improve the quality of products.

Key benefits of upgrading:

- More energy efficient
- Cost savings on energy bills
- Environmentally friendly
- Optimises staff productivity and improves quality
- Future-proofs your buildings
- A better working environment for employees

Ultra-Compact USB Oscilloscope

- 20 MHz bandwidth, 2 input channels
- 200 MS/s real-time & 4 GS/s equivalent-time sampling rate
- 16kS capture memory
- Serial protocol decoding
- Mask limit testing
- Math channels and filters, including frequency and duty cycle
- Advanced digital triggering
- Persistence display mode
- Spectrum analyser with magnitude, average and peak hold modes
- Function generator and arbitrary waveform generator



163-2719

R4 375,52

Test Bench Thermal Camera

- Reduces test times and improves product design for electronic board and device evaluation by detecting design flaws that materialise as heat
- 320 x 240 IR resolution (7800 pixels) can measure small components down to 170µm per pixel spot size
- Vibrant 3" LCD display provides immediate thermal feedback
- 45° field of view
- ±3% measurement accuracy
- Wide temperature range, from -20°C to 250°C, and sensitive enough to detect temperature shifts smaller than 0.06°C
- Includes pole mount and FLIR Tools+ software



135-6220 ETS320

R68 876,31

Digital Bench Power Supplies

- EL-R series power supplies use classic analog controls for voltage and current, and linear regulation for the best possible performance
- The large and bright displays have a fixed resolution to avoid confusion
- Preset voltage and current levels are shown when the DC output switch is turned off
- Remote sense is available when needed, for maintaining precise regulation at the load and true metering of the load voltage. This can be disabled
- 1 to 3 outputs depending on model



665-4874	0 to 30V; 0 to 1A (30W)	R6 021,70
665-4883	0 to 18V; 0 to 3.3A (60W)	R6 864,81
665-4886	0 to 30V; 0 to 2A (60W)	R6 701,96
665-4880	0 to 56V; 0 to 1.1A (60W)	R7 006,21
665-4899	0 to 15V; 0 to 5A (75W)	R8 052,96
665-4892	0 to 30V; 0 to 3A (90W)	R8 418,62
665-4896	2 x (0 to 30V; 0 to 2A) (120W)	R12 088,26
665-4906	2 x (0 to 30V; 0 to 2A) plus 1.5 to 5.0V @ 2A (130W)	R13 008,18



E36300 Series Triple Output Bench DC PSUs

- Low noise power and excellent line/load regulation
- Turn on/off all three outputs independently
- Electrically isolated independent channels 2 and 3 (E3612/13A)
- Improved measurement accuracy with 4-wire remote sensing (E3612/13A)
- Double output voltage and current with series/parallel mode (E3612/13A)
- Front and rear output terminals (E3612/13A)
- GPIB, LAN (LXI Core), and USB control (varies by model)
- Physical lock mechanism
- Data logging and output sequencing (E3612/13A)
- One of the quietest power supplies in its class for a quiet working environment



136-8574 E36311A 80W 6V, 5A & ±25V, 1A

R23 148,06

136-8575 E36312A 80W 6V, 5A & 2x 25V, 1A

R29 484,25

136-8576 E36313A 160W 6V, 10A & 2x 25V, 2A

R35 770,05

1000X-Series Oscilloscope

- 50MHz to 100MHz
- See more signal detail with 50,000 wfms/sec update rate
- Make professional measurements, including mask, math, FFT, analog bus, and protocol triggering/decode
- Quickly learn how to use; Oscilloscopes have built-in help and training signals
- Educators can easily set up teaching labs with the free Educator's Resource Kit



134-6148 DSOX1102A 70 MHz, 2 Analog Channels

R14 117,35

134-6150 DSOX1102A 100 MHz, 2 Analog Channels

R19 139,48

134-6149 DSOX1102G 70 MHz, 2 Analog Channels, with WaveGen and FRA

R18 464,34

134-6146 EDUX1002A 50 MHz, 2 Analog Channels

R9 741,77

134-6147 EDUX1002G 50 MHz, 2 Analog Channels, with WaveGen and FRA

R14 117,35

IP67 10,000 Count Handheld Multimeters

- Measure voltage, current, frequency, capacitance, resistance, continuity, diode test and temperature
- IP67, and tested to withstand 3-metre (10-ft) drop
- CAT 111 1000V/CAT IV 600V overvoltage protection
- Built-in flashlight
- T1-T2 differential temperature measurement (U1242C)
- ZLOW low impedance mode to eliminate false readings caused by stray voltages (U1242C)
- Vsense for non-contact voltage detection (U1242C)
- Internal memory data logging up to 2000(auto)/100(manual) readings
- Optional IR-Bluetooth adapter for wireless monitoring & datalogging to PC, iOS or Android devices



906-4154 U1241C

R6 896,21

906-4157 U1242C

R7 391,31

820-2982 U117A Bluetooth Adapter

R1 943,40

WiFi Dataloggers

- Remote, flexible data logging for buildings and site monitoring and other applications
- Combines an unobtrusive, waterproof design with interchangeable measurement probes, up to two channels and up to 2 years of potential battery life
- Wirelessly stream, record and view temperature and humidity on the Cloud, using any web browser, smart phone or tablet
- Simple device setup using our smartphone App
- Configurable high and low alarms with on-board indicator and sounder
- View and analyse multiple sensors, including graphing of historic data Accuracy $\pm 0.5^{\circ}\text{C}$

NEW



172-0558	To 60°C, with short external probe	R1 859,60
172-0560	To 60°C, with short external probe, high accuracy	R2 307,19
172-0562	To 125°C, with external thermistor probe	R3 016,09
172-0564	To 125°C, with external thermistor probe, high accuracy	R3 741,82
172-0566	To 60°C, with external temp/RH probe	R2 563,68
172-0568	To 60°C, with external temp/RH probe, high accuracy	R3 076,68
172-0571	To 125°C, with two thermistor probes	R3 515,50

PrimeTest 100 Appliance and Socket Tester

- PAT tester, IEC lead tester and power socket tester all in one super compact unit, providing everything you need for basic testing facilities
- Simply pushing a button will give you the option of either PAT Test mode, Class I and Class II, IEC Lead Test mode or Power Socket mode
- To further add to its easy operation, a bright display shows the test results values as well as PASS or FAIL indication
- Small, light and battery powered so easily portable



717-3653	PrimeTest 100	R7 974,24
-----------------	---------------	------------------

Insulation Testers

- Dielectric Discharge (DD), Step Voltage (SV) and ramp test functions
- Advanced memory with time/date stamp, on screen recall
- Real time clock
- Download of memory via isolated USB (type B) interface (USB cable to PC)
- PowerDB Lite asset management software



Megger.

763-9264		R 75,691.18
763-9260		R 66,070.85
763-9267		R 48,703.65

FLUKE

Fluke TiS45 Thermal Imager

- A great troubleshooting tool that manually focuses down to 15cm with 3.5inch LCD display
- Built-in 5MP digital camera (visible light)
- IR detector is 160 x 120 pixels, ensuring a good level of thermal detail
- Blends visible light and infrared images via patented IR-Fusion™ technology to create a revealing hybrid image
- Wi-Fi® upload to FREE Fluke Cloud™ or share in real-time with Fluke Connect™



888-2493	Fluke TiS45	R41 400,00
-----------------	-------------	-------------------

Fluke 922 Airflow Meter

- Provides differential and static pressure, air velocity and flow readings for maintaining balanced and comfortable ventilation
- Measure pressure drops across filters and coils, match ventilation to occupant loads, monitor indoor vs. outdoor pressure relationships and manage the building envelope and perform duct traversals for accurate airflow readings
- Bright, backlit display for clear viewing in all environments
- User-defined duct shape and size for maximum airflow accuracy
- Resolution down to 0.001 in H2O
- 99 point data storage capacity and Min/Max/Average/Hold functions for easy data analysis



850-7672		R13 273,60
-----------------	--	-------------------

Fluke 971 Temperature Humidity Meter

- Temperature and humidity are two important factors in maintaining optimal comfort levels and good indoor air quality
- The Fluke 971 is invaluable for buildings maintenance engineers, HVAC-service contractors, and specialists who assess indoor air quality (IAQ), enabling accurate humidity and temperature readings quickly
- Temperature range from -20°C to 60°C
- Measures dew point and wet bulb
- Relative humidity from 5% to 95%
- Min/Max/Avg data hold

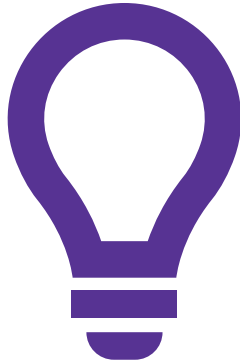


724-4193	Fluke 971	R6 049,39
-----------------	-----------	------------------



Looking for Lamps?

For the latest LED retrofit and legacy lamps, look out for this season's lighting guide coming soon!



Coreline Downlights - White

- Reduced operating costs thanks to energy saving and longer lifetime
- One-to-one replacement, facilitating the gradual switch from conventional to LED luminaires if required
- 21W consumption giving 2100lm light output
- Easy to install thanks to their standard cut-out size and push-in connectors
- Cut out size 200mm



PHILIPS

122-7993 3000K
122-8001 4000K

R1 430,26
R1 430,20

easyDALi System

- Designed to make installation and set-up of a DALI system quicker and easier, to help reduce lighting costs as efficiently as possible
- The system provides presence and absence detection and delivers daylight harvesting to ensure maximum energy efficiency, all using a single PIR sensor
- You can simply wire the lighting, the power supply and the PIR together with the multi-purpose box and simply accept the default settings to get up and running
- With just a few more button selections on the PIR and the remote controller, the product can easily set up groups and scenes
- as well as corridor modes, additional timing modes and the PIR will also automatically daylight harvest to maximise energy savings



Elkay

136-3279 Remote Controller
136-3277 Power Supply
136-3280 Junction Box

R1 018,03
R1 497,96
R1 046,47

LED Bulkhead light

- This RS Pro LED Bulkhead has a sleek ultra-modern body with no visible screws. With a quick fix installation bracket, this bulkhead is ideal for domestic properties.



LED Batten with Diffuser

- Potential 60% energy saving over standard fluorescent tubes
- The tubes light instantly and have a low heat output
- LEDs are behind a slim opal diffuser, mounted on a traditional batten body
- The 840 colour reference / 4000K cool white temperature is most suitable for industrial, retail and office environments
- Can be used as a direct replacement for traditional single or twin battens (standard or high output)
- Tridonic/Osram driver



600 x 600 LED Panels

- Direct replacement for conventional 4x18W or 4x14W fluorescent lamps luminaires
- Energy savings of up to 50% compared to conventional luminaires
- Easy and quick installation
- Very homogenous light
- Suitable for recessed ceiling with grid system 600x600
- External driver for extended flexibility (compatible with recommended DALI drivers)
- Very slim aluminum housing (only 10.5mm)



145-5905 8 W, Frosted, 220-240 V, IP65
145-5907 15 W, Frosted, 220-240 V, IP65

R315,34
R448,11

918-1101 4' 30W 3,285lm
918-1105 4' 55W 6,470lm
918-1114 5' 40W 4,650lm
918-1117 5' 65W 7,120lm
918-1111 6' 50W 5,725lm
918-1120 6' 75W 8,370lm

R1 370,60
R2 046,70
R1 669,79
R2 443,97
R1 887,14
R2 772,58

122-3540 30W, 3000lm, 3000K
122-3542 30W, 3000lm, 4000K
122-3543 30W, 3000lm, 6500K
122-3544 40W, 3000lm, 3000K
122-3545 40W, 3000lm, 4000K
122-3546 40W, 3000lm, 6500K

R1 833,74
R1 841,37
R1 844,14
R2 018,09
R2 015,55
R2 018,24

SylSmart Standalone Smart Lighting System

- Offers an energy efficient lighting solution that's flexible, delivers ultimate control, and is easy to install and program
- Ideal for offices, meeting rooms, classrooms and corridors
- It is wireless, plug-and-play, and cost effective, and does not require integration into a wider lighting control system. All it needs is power to each component, and the switch doesn't even need that!
- Battery-free, energy harvesting wall switches allowing high flexibility, and low maintenance
- Quick and simple installation and maintenance free
- Easily programmable with intuitive smartphone app
- Luminaires can be controlled individually or grouped for convenient scene-setting
- Turn lights on and off automatically thanks to sensors

NEW



SYLVANIA

174-4956	600x600 panel, 3500lm, 40W, 4000K	R8 298,40
174-4957	220mm diam downlighter, 1989lm, 21W, 4000K	R7 096,79
174-4958	Presence / daylight sensor	R6 690,02
174-4959	Smart light switch - 2 way	R3 319,36

Non-Corrosive LED Fittings

- IP65 waterproof LED batten
- Available in 3 lengths: 662 mm, 1265 mm & 1565 mm with single or twin lamp options and choice of colour temperatures
- High efficiency throughout the range
- Instant light - zero flicker and no warm-up time
- UV stabilised impact resistant polycarbonate body and diffuser - no yellow tinge or discolouration over time
- Interlocked stainless steel brackets
- Extra long life of approximately 50,000 hours



SYLVANIA

122-2278	6500K, 4500lm, 1565mm, 1 lamp	R2 154,21
122-2272	4000K, 4450lm, 1565mm, 1 lamp	R2 154,21
122-2279	6500K, 8500lm, 1565mm, 2 lamps	R3 302,43
122-2273	4000K, 8300lm, 1565mm, 2 lamps	R3 302,43

LED Emergency Light Bulkhead

- 3W LED illumination
- 3 hour minimum emergency duration
- Includes legend kit
- Impact resistant polycarbonate diffuser and base on bulkhead
- Can be wired for maintained or non-maintained operation



795-9378	R619,80
-----------------	----------------

LED Emergency Twin Spotlight

- Incorporates a self test feature every 90 days to ensure correct operation
- Cost effective replacement for old fashioned halogen twin spot fittings
- Due to the low power consumption of the LED lamps, only one battery is required, reducing the power consumption during charging
- Fitting incorporates LED indicators and built in sounder to show lamp status and alert of faults
- White output (3500K)
- Tilt and pan heads allows light to be directed as required
- Durable polycarbonate body
- 3 hour emergency duration



795-9381	R1 791,11
-----------------	------------------

LED High Bay Lighting

- Replacement for high bay luminaires with mercury vapor or metal halide lamps
- Energy savings of up to 60 % compared to conventional high bay luminaires
- Luminous efficacy: up to 135 lm/W
- Type of protection: IP65
- Available with beam angle: 70°, 90°, 110°
- Mounting hook and brackets included
- 5 years guarantee

NEW



173-6002	95W 13000lm 4000K 110°	R7 551,54
173-6001	95W 13000lm 4000K 90°	R7 551,54
175-6302	95W 13000lm 6500K 90°	R7 286,30
173-6004	165W 22000lm 4000K 70°	R11 180,21
175-6303	165W 22000lm 6500K 70°	R10 916,47
173-6005	200W 27000lm 4000K 110°	R13 435,86

Damp Proof LED Luminaire

- The ideal upgrade of existing fluorescent installations
- Greater energy savings and low maintenance costs with an average life up to 50000 hours
- Can be used as a single bar or connected to form a series
- Up to 55% energy efficient
- Damp proof protection
- Easy and quick installation
- White polycarbonate housing
- Beam angle: 180°
- Lifetime (L70/B50): up to 50,000 hours
- Luminous flux: up to 6400 lm
- Type of Protection: IP65



122-3575	1200mm, 21W, 4000K, 2400lm	R1 296,20
122-3577	1200mm, 39W, 6500K, 4400lm	R2 052,49



9 series LED Ex ed Luminaire

- Suitable for zone 1 hazardous area applications in both standard and emergency formats
- Choice of 2ft or 5ft with light output up to 10,000 Lumens
- Low maintenance high efficiency LED light source
- Variable mounting centres
- Captive diffuser for safe installation and maintenance
- Anodised corrosion resistant aluminium body with high impact polycarbonate diffuser giving IP65
- ATEX Group: Ex eb mb op is IIC Gb T4



NEW

LED High Bay Light Fittings

- Suitable for use in retail, industrial areas and in warehouses
- 110° beam angle
- 5000K colour temperature
- Robust die-cast aluminium construction
- Fully IP65 protected
- Cable gland and suspension hook supplied
- Three wattages available to suit most requirements



175-0599	2'	R6 970,66
175-0600	2' EM	R11 016,95
175-0601	5'	R9 822,29
175-0602	5' EM	R13 903,29



918-1123	130W, 17000lm	R9 520,22
918-1127	160W, 20000lm	R13 183,77
918-1136	240W, 31000lm	R16 147,21

LED Bulkhead

- Energy efficient super bright 20W LED (Daylight 5700K)
- Only 36mm deep
- High grade aluminium body and polycarbonate diffuser
- Impact resistant and flush mounted
- IP65 rated



908-4072	Black	R668,94
145-5904	White	R 448,11

Long-life LED Floodlights

- Offers significant energy savings versus conventional light sources
- Rated life of 50,000 hours minimises maintenance
- IP65 rated for outdoor use
- Choice of white or black finish



145-5876	10W Black	R437,55
145-5878	10W White	R437,55
145-5879	20W Black	R875,10
145-5880	20W White	R875,10
145-5881	30W Black	R1 312,66
145-5882	30W White	R1 312,66
145-5884	50W Black	R2 187,76
145-5885	50W White	R2 187,76

15000lm LED Floodlights

- Energy savings of up to 90 % compared to halogen lamp floodlights
- Frosted cover made of tempered glass for uniform illumination
- Symmetrical beam angle: 100° x 100°
- Mounting bracket for up to 180° tilting
- Type of protection: IP65, impact resistance: IK08
- 5 years guarantee

NEW



175-6322	4000K	R5 730,43
175-6323	6500K	R5 730,43

IP68 Emergency Luminaire

- Dust resistant, water resistant IP68 design with 316L stainless steel
- Cover slides out for easy maintenance
- Can be used as lighting or signalization indoors or outdoors
- Stainless steel attachment belt attaches quickly and is adaptable to multiple surfaces (wall or ceiling)
- Maintained / non-maintained wiring system
- Rugged enough to perform reliably even in extreme industrial conditions
- Choice of one lamp or two (one per side)
- All legends included (up/down/left/right)



NEW



175-0836	Single Sided	R12 410,48
175-0837	Double Sided	R13 100,01

LED Rechargeable Task Lights

- With a quick folding bracket allowing it to be transported and stored with ease
- IP54 rated
- 110° beam angle
- 5500K colour temperature

NEW



171-7021	1x8W 600lm	R1 629,50
171-7022	2x8W 2x600lm	R2 112,32



**BAD LIGHT
CAN RUIN
YOUR DAY.**

**BETTER SWITCH
TO LEDVANCE
LUMINAIRES.**

LEDVANCE LUMINAIRES

Check out our extensive range of LED Professional Luminaires for multiple applications.



LEDVANCE

Honeywell RFG-100 Remote Access Wi-Fi Gateway

- Simple installation and binding
- Easy to read LED indicators
- Connection is via a standard home internet router by Ethernet cable and then wirelessly to the heating controls using Honeywell RF technology
- Communication is through Honeywell Total Connect Comfort servers for a fast and secure connection and automatic firmware updates
- Connections: 1 Ethernet port; 1 dc power socket



Honeywell

899-7876

R1 938,37

Danfoss Digital Room Thermostat

- Battery or mains powered
- Selectable Chrono Proportional or ON/OFF control
- Upper and lower temperature limits
- Output on indication
- Push button lock
- Cooling option with compressor delay
- Fahrenheit or Centigrade selectable display



833-0885 Battery Powered

R1 261,73

833-0889 Mains Powered

R1 261,73

24/7 Heating & Hot Water Programmer

- Daylight saving time changeover
- 7 day / 5+2 day / daily (24hour) programming format
- Max. 3 on / off programs per day for each channel
- Each channel (CH or HW) is independently programmable
- Holiday program: may be scheduled upto 60 days in advance
- Standard BS wiring backplate with transparent polycarbonate terminal cover



719-4146 230 V ac

R702,34

3 YEAR WARRANTY

Honeywell Single Zone Wireless Room Thermostat

- Easy installation
- Can be controlled from anywhere via the Honeywell Total Connect Comfort app
- Wirelessly programmable (time and temperature profiling) via the app and is a solution that can be used in any system with any boiler
- Wireless and Wi-Fi operation requires the RFG-100 Remote Access Wi-Fi Gateway (899-7876)
- Simple to use interface: the outer ring is the control dial
- The Honeywell Total Control app is available from the respective iOS and Android app stores



Honeywell

899-7873

R3 321,58

Danfoss Battery Powered Room Thermostat

- Selection of either ON/OFF or chrono-proportional control
- Cycle rate adjustment if chrono-proportional control is selected
- Selection of heating or cooling control
- Selection of compressor delay timer if cooling operation is selected
- Selection of Fahrenheit or centigrade scaling
- Battery powered for ease of installation
- Suitable for heating or cooling systems



833-0876

R3 339,21

Standard Pleated Panel Filters

- High capacity disposable filters offering a better than basic level of filtration
- Made using patented Kimberly Clark Intrepid® filter media which delivers a constant level of filtration over its life
- Constructed by bonding a pleat pack of filter media into a water repellent AquaKote® card frame
- Pack of 12



730-2858

R2 408,36

Danfoss, Digital & Programmable HVAC Thermostat with LCD Display

- RET2000M battery operated digital room thermostat combines sleek and modern design with high performing energy saving control
- comes with the RX1-S single channel receiver, allowing it to be easily installed wherever is more convenient
- Push button lock
- Cooling option with compressor delay
- Fahrenheit or Centigrade selectable display



833-0898

R3 302,16

Hygrothermal Transducer for Climate Monitoring

- For measuring relative air humidity
- For heating, climate control and ventilation technology
- In room design
- Specially developed for applications in heating, climate and ventilation technology
- These humidity sensors are characterised by excellent long-term stability, high measuring accuracy, excellent high moisture resistance and good chemical stability



410-6146

R2 732,75

Portable Air Conditioner 12000BTU

- 3 Fan speed, high, medium and low
- 24 hours timer
- Sleep function
- Remote control
- Euro Plug Fitted
- Net weight 29,5 Kg



813-3391

R 10,190,46

3 YEAR WARRANTY

IP Cameras

- HDTV 1080p video quality and 2 MP resolution for image usability
- WDR to handle scenes with complex light conditions
- Built-in IR illumination for surveillance in total darkness
- PoE for network connectivity and electrical power with a single cable
- Optimized for reduced bandwidth and storage efficiency
- 3 years warranty



144-9676	Dome (Vandal Resistant)	R4 556,58
144-9679	Dome with Wifi (Vandal Resistant)	R6 699,07
144-9673	Cube with IR (+ Microphone & Speaker)	R5 371,33
144-9675	Cube with IR, Wifi (+ Microphone & Speaker)	R7 513,82
144-9674	Bullet with IR, IP66	R6 155,90
144-9677	Eye [3-axis] with IR, IP42	R6 155,90
144-9678	Eye [3-axis] with IR, IP66 (Vandal Resistant)	R6 699,07

Access Control System

- Third-party readers compatible for new or retrofit applications
- Fully flexible and scalable solution
- Easy to install, commission and operate - 2-wire RS-485 communication, and diagnostic LEDs
- System integration enabled through optional I/O and TCP/IP modules
- Custom reporting and automated back-up



133-1931	1 Door Bundle	R15 004,96
133-1932	2 Door Bundle	R21 875,01

Bullet Cameras

- IP67, suitable for indoor and outdoor use
- Maximum resolution 1312 x 1069 pixels @ 1.4M
- Operating voltage 12Vdc
- 40 IR LEDs for operation up to 40m
- Built-in OSD Key
- 720P AHD Video Output
- 1280H (1000TVL) CVBS Video Output



162-3010	2.8 - 12mm focal length	R5 768,42
162-3011	5 - 50mm focal length	R6 655,25

Fingerprint Access Control Systems

- Fingerprint scan technology and multiple identification method
- Can scan through dirt, dust, high ambient light, water and even some latex gloves
- Dry, damaged or worn fingers create no problems for reliable reads



117-6097	OA1000 Mercury Fingerprint, camera and RFID Terminal	R20 045,45
117-6105	OA3000 fingerprint and RFID terminal	R12 202,25
117-6106	OA1000 fingerprint and RFID terminal	R12 297,99
133-1930	TDSi DIGIgarde PLUS Fingerprint Reader	R16 275,40

Gigabit Ethernet Switch 300 Series

- Auto-sensing Gigabit ethernet ports
- Energy-efficient technology
- PoE (Power-over-ethernet) option available for powering security cameras and other PD (powered devices)
- Ideal for quiet operation with a fan-less design
- Desktop and wall mountable



883-8617	8 Port	R802,65
121-8131	5 Port	R606,23

Access Control Kits

- An entry level door access security kit
- Provides a single access control solution for one access door
- Everything required for installation is provided in each kit



741-8221	K2, 21 users, outdoor, with keypad and magnetic lock	R5 430,69
741-8234	K4, 500 users, proximity, with magnetic lock	R5 302,88
741-8231	K6, 500 users, with keypad and magnetic lock	R5 530,74

Infrared Detectors

- Secure detection from 20m up to 120m depending on model selected
- Relay switching and LED signal when triggered
- Tamper-proof: monitoring of transmitter and receiver via lid contact
- IP66 suitable for indoor and outdoor use
- Supplied in pairs



519-400	20m infra red detector	R812,27
519-484	30m, 60m infra red detector	R1 701,11
519-494	60m, 120m infra red detector	R2 314,44

Western Digital Red 4 TB Internal Hard Drive

- Beyond desktop with NASware
- Important features for system integrators
- Save power and money
- Intelligent error recovery
- Command completion"



893-6884	R4,671.65
-----------------	------------------

Make light work of LEDs

All lamps used to be specified according to the power they consume. So the higher the power, the more light they would output - meaning they'd be brighter.

This is now much harder to measure, as LEDs drive down power consumption, so it's better to compare the relative light (lumens) output of a device instead. Use our cheat sheet to help you make the right switch from incandescent or fluorescent to LED lamps.

Lumens or Watts?

Incandescent Wattage	Approx Lumens
25W	230-270 lamp
35W	250-280 spotlight 390-410 lamp
40W	440-460 lamp
50W	330-400 spotlight
60W	800-850 lamp
75W	1000-1100 lamp
100W	1500-1600 lamp

Fluorescent Wattage	Approx Lumens
Twin Tube 11W	640
Twin Tube 22W	1440
2D 16W	1050
2D 28W	2100
28D 38W	2850
Linear T5 14W	1200
Linear T5 35W	3300
Linear T5 49W	4450
Linear T8 18W	1350
Linear T8 36W	3350
Linear T8 58W	5200

What is the colour rendering index?

The colour rendering index (CRI) is a scale from 0 to 100 to measure how colours look under a light source when compared with daylight. So a reading of 100 indicates that colours under the light appear the same as they would under natural sunlight.

So CRI90+ lamps, for example, are ideal for lighting in settings such as museums and quality control departments, as accuracy is really important.

Dimmable vs non-dimmable lights

Not all lamps are dimmable, so it's worth checking if this is going to be a requirement. Also, some traditional dimmers don't work with LEDs, meaning the dimmer will need to be updated. Operating a dimmable lamp at 90-95% power can result in considerable savings while benefiting from little reduction in light levels.

Colour temperature

This describes the light appearance provided by a light source. It's measured in degrees of Kelvin (K) on a scale from 1,000 to 10,000. Choose by colour temperature to influence a room's atmosphere, for example:

2,700K - this is a warm white light, more suitable for where ambience is needed, such as in homes and restaurants.

4,000K - this emits cool white light, ideal for offices, production areas, corridors, washrooms and exterior fittings.

6,000K - this light is ideal for commercial and industrial areas.

Beam angle

The beam angle of a lamp is the angle at which the light is distributed or emitted. Lamps vary in effective beam angle to meet different applications.

Emergency lighting

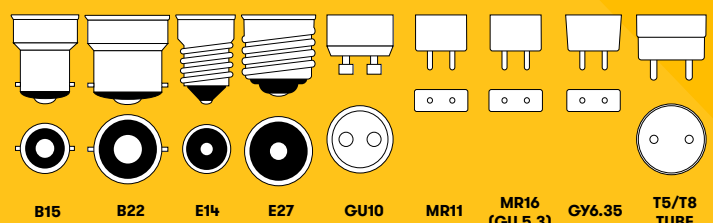
The term 'maintained' or 'non-maintained' can sometimes be confusing. Emergency Lighting will either be configured as:

Non-Maintained: Lighting is only illuminated when power is lost

Maintained: Lighting is always on and remains on when power is lost

Fitting

Please make sure to select the correct cap fitting when selecting your lamp. The diagrams below show some of the fitting types you may come across:



The Smart Energy Management Journey

The first step to smarter energy management is knowing what you are consuming and where. Combining PowerLogic™ energy metering with wireless solutions like PowerTag allows you to collect this vital usage data. This information can then feed the EcoStruxure™ software suite or PowerSCADA Expert software tool empowering greater energy efficiency and optimum performance.



PowerLogic™ PM5000

- The PowerLogic™ PM5000 power meter is the ideal fit for cost management applications, with enhanced measurement capabilities
- It allows the user to pin-point energy savings and perform a high level power quality assessment of the local electrical network
- The 96×96mm unit has a graphical display that enables data for all phases, neutral & ground to be monitored simultaneously



841-7765	PM5100 Power Meter, Pulse Out	R 4 773,93
841-7768	PM5100 Power Meter, Pulse/Serial Out,MID	R 5 991,06
841-7762	PM5300 Power Meter, Serial, 2DI-2DO Out	R 6 315,01
841-7774	PM5300 Power Meter, ETH, 2DI-2DO Out	R 7 304,90
841-7778	PM5300 Power Meter, ETH, 2DI-2DO Out,MID	R 11 476,89
841-7787	PM5500 Power Meter, ETH, 4DI-2DO Out,MID	R 11 986,04

PowerLogic™ PM3200

- This PowerLogic Power meter PM3200 offers basic to advanced measurement capabilities.
- With compact size and DIN rail mounting, the PM3200 allows mains and feeders monitoring in small electrical cabinets. Combined with current transformers and voltage transformers, these meters can monitor 2-, 3- and 4-wire systems. The graphic display has intuitive navigation to easily access important parameters.



841-7756	PowerLogic Power meter PM3200	R 4,143,83
841-7752	PowerLogic Power meter PM3200	R 3,680,05
841-7759	PowerLogic Power meter PM3200	R 4,115,52

iEM2000 DIN Rail Energy Meters

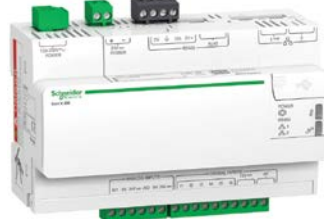
- Cost-attractive single phase DIN Rail mountable energy meters - ideal for local energy monitoring
- 40A direct measure (iEM2000 models) & 63A direct measure (iEM2100 models)
- Electromechanical display (iEM2000 models) and LCD display (iEM2100 models)
- On-board Modbus or M-Bus communication options
- MID-compliant (selected models only) providing certified accuracy and data security



913-9661	iEM2000 230V 40A - A9MEM2000 - MID	R 1 973,20
913-9665	iEM2010 230V 40A + Pulse - A9MEM2010 - MID	R 1 802,22
913-9637	iEM2100 230V 63A - A9MEM2100	R 1 468,84
913-9671	iEM2150 230V 63A Modbus - A9MEM2150	R 2 838,81
913-9677	iEM2135 230V 63A Modbus - A9MEM2135 - MID	R 2 985,49

ComX EBX Gateways

- ComX 200 acts as data logger collecting data from locally connected devices such as PowerLogic meters, intelligent circuit protection and Modbus enabled sensors, then makes this data accessible via the local LAN or forwards to a remote server and publishes it to the Schneider Electric cloud or another hosted platform
- The ComX 510 is similar to the 200 but as well as collecting and storing data it has embedded energy management software which provides immediate visibility of site wide energy consumption, in real-time, as well simple analysis of historical data in bar graph or trending formats.
- Both gateways can support up to 64 field devices (32 Modbus devices), feature 2 Ethernet ports, RS-485 Modbus serial, 2 analogue and 6 digital inputs
- 256 MB flash, 128 MB RAM memory capacity



913-9728	EBX200 Gateway	R 16 190,70
913-9722	EBX510 Gateway	R 17 338,27

PowerTag Wireless Energy Sensor

- Acti 9 PowerTag® not only measures energy and power in real time, it also monitors your assets and immediately alerts your smartphone in the event of failure
- Simply 'tag' your circuit breakers, link these PowerTags to the Smartlink concentrator and data can then flow seamlessly into your BMS or accessible via the Smartlink embedded web pages
- Easy to install and setup using Acti 9 Smart Test free software
- PowerTag is installed with no additional wires - cutting installation time to just a few minutes, even for existing panel installations
- Can be used with Acti 9 series breakers or most other MCBs on the market



134-8658	PowerTag Sensor 1PW MAX 63A	R 3 077,47
134-8659	PowerTag Sensor 1PN UP MAX 63A	R 3 234,41
134-8660	PowerTag Sensor 1PN DOWN MAX 63A	R 3 234,40
134-8661	PowerTag Sensor 3P MAX 63A	R 6 782,99
134-8662	PowerTag Sensor 3PN UP MAX 63A	R 7 458,57
134-8663	PowerTag Sensor 3PN DOWN MAX 63A	R 7 458,56
134-8664	Smartlink Concentrator TCP/IP ET	R 8 062,79
134-8667	Smartlink Modbus TCP/IP/Wireless Module	R 13 002,71
134-8665	Acti9 PowerTag Side Ext Kit	R 10 985,46
134-8666	Acti9 PowerTag Top/btm Extn Kit	R 10 183,97

Link150 Ethernet Gateway

- A Modbus Serial to Modbus TCP/Ethernet IP protocol gateway with built in web-server allowing access to device data via simple browser - no software needed
- Supports both RS-485 & RS-232 serial and capable of supporting up to 32 Modbus protocol enabled meters or other devices
- Can be powered by 24Vdc or via PoE



913-9646	EGX150 Gateway	R 7 352,84
-----------------	----------------	-------------------

22 thousand SKUs from the biggest brands in the mechanical world are now available from stock with more being added every day. Thinking mechanical? Think RS.



Outdoor/Cold Store Sensors

- An IP67 outdoor or cold room temperature sensor with either a PT-100 or proportional current loop output
- PT-100 4 wire (class B) sensor can be used in two, three or four wire configuration
- 4-20mA current loop transmitter option for longer distances or connection to control system
- Housing dimensions 80 x 74 x 54mm
- Probe dimensions 12.5 x 75mm
- Perforated stainless steel sheath

3 YEAR WARRANTY



455-4214 4-20mA transmitter output
236-4283 2% wire direct connection

R 3 789,62
R 2 339,92

VLT® Midi Inverter Drive FC 280

- The VLT® Midi Drive FC 280 delivers flexible and efficient motor control for use in a wide variety of building applications up to 11kW
- With a strong focus on control performance combined with integrated functionality such as DC chokes, RFI filters, Safe Torque Off (STO) and brake choppers
- The VLT FC280 Drive is prepared for 'drop in' compatibility with the VLT® 2800 which is now end of life



125-0751 0.37kW, 380-480V **R 8 706,34**
125-0752 0.55kW, 380-480V **R 9 293,63**
125-0753 0.75kW, 380-480V **R 10 805,62**
125-0754 1.1kW, 380-480V **R 12 491,10**
125-0755 1.5kW, 380-480V **R 14 522,58**
125-0756 2.2kW, 380-480V **R 16 864,08**
125-0757 3.0kW, 380-480V **R 19 442,23**
125-0758 4.0kW, 380-480V **R 21 645,25**
125-0759 5.5kW, 380-480V **R 26 256,37**
125-0760 7.5kW, 380-480V **R 30 489,44**
125-0796 Basic Operator Panel - 130B1107 **R 2 694,29**

Aluminium Round Tubes

- Lightweight, corrosion resistant and strong
- Ideal for the fabrication of tubular structures
- BS EN 755 Standard
- Available in one, two and three meter lengths
- T-Connectors, 90° Connectors, wall and floor flanges available
- Price each in a pack of 3



492-8154 Type 6, 1000mm L, Dia. 33.7mm **R 1 886,29**
492-8176 Type 6, 3000mm L, Dia. 33.7mm **R 5 192,97**
492-8182 Type 7, 1000mm L, Dia. 42.4mm **R 2 265,07**
492-8211 Type 7, 3000mm L, Dia. 42.4mm **R 6 631,85**
492-8227 Type 8, 1000mm L, Dia. 48.3mm **R 3 070,34**
492-8249 Type 8, 3000mm L, Dia. 48.3mm **R 7 879,21**
492-7971 Type 6, 90° Round tube connector **R 223,51**
492-7870 Type 6, Round Tube T-Connector **R 181,10**
492-8104 Type 6, Round Tube, L61 Wall Flange **R 221,79**

Type C RCBOs

- Type B MCB and an RCD combined which allows both overcurrent protection and earth fault current protection
- Manufactured to BS 7671, BS EN 61009-1, EN 50022
- Toggle switch, DIN Rail mount

NEW



146-2673 6A 30mA **R 954,47**
146-2674 10A 30mA **R 954,47**
146-2675 16A 30mA **R 954,47**
146-2676 20A 30mA **R 954,47**
146-2677 32A 30mA **R 954,47**

Digital Time Switches with NFC

- Can be programmed in "Classic" mode via the joystick or "smart" mode via smartphone with NFC communication
- Easily configurable for daily or weekly programming



884-0720 Astro NFC time switch **R 1 511,26**
884-0727 Daily/Weekly NFC digital time switch **R 1 294,18**
915-5900 Weekly NFC timeswitch 1CO 16A 110-230V **R 1 500,24**
915-5904 Weekly NFC timeswitch 2CO 16A 110-230V **R 1 714,65**
915-5913 Astro NFC timeswitch 1CO 16A 110-230V **R 1 626,94**
915-5916 Astro NFC timeswitch 2CO 16A 110-230V **R 1 946,89**

LEDD125 Multi-functional LED Beacon

- Continuously rated, with LED for long-life and extra bright output
- IP65 protected with 3-point fixing for surface or wall mounting
- 3 operating modes - continuous, 1Hz flash and 2Hz flash - selected by PCB link



721-6457	24Vdc, GREEN	R 2 220,68
721-6460	230Vac, GREEN	R 2 536,88
674-1990	24Vdc, RED	R 2 343,40
674-2000	230Vac, RED	R 2 593,39
674-2003	24Vdc, AMBER	R 2 343,40
674-2006	230Vac, AMBER	R 2 593,60
755-9590	24Vdc, BLUE	R 2 333,59
755-9600	230Vac, BLUE	R 2 682,84
755-9603	24Vdc, WHITE	R 2 333,59
755-9607	230Vac, WHITE	R 2 683,40

General Purpose Electronic Sounder - 100dB

- The AE40M electronic sounder has 8 selectable tones and is ideal for fire alarms and general buildings applications
- Red ABS plastic housing, supplied with shallow base (rear 10mm cable entry) and IP54 sealing
- Option 'Deep' base available which offers 2 x M20 gland entries and increases ingress protection to IP65

NEW



144-5945	24Vdc Sounder, RED	R 721,21
144-5946	230Vac Sounder, RED	R 723,93
144-5947	Optional Deep Base with 2 x M20	R 87,52

Solenoid Driven Bells

- Solenoid driven bells designed for tough environmental conditions such as heavy duty industrial & marine applications where a high weatherproof classification is required
- Each bell produces a rich and clear traditional sound that is free from mechanical clatter
- Zinc powder coated steel gong with M20 cabling entry knockouts via polypropylene back box
- IP66 protection



901-0700	Grey Solenoid Bell, 168mm dia, 115 Vac	R 1 590,92
901-0725	Grey Solenoid Bell, 219mm dia, 115 Vac	R 1 858,16
901-0719	Grey Solenoid Bell, 168mm dia, 230 Vac	R 1 591,40
901-0728	Grey Solenoid Bell, 219mm dia, 230 Vac	R 1 858,16
901-0703	Red Solenoid Bell, 168mm dia, 24 Vdc	R 1 671,94
901-0716	Red Solenoid Bell, 219mm dia, 24 Vdc	R 1 910,94

Eco LED Tower Beacons

- The LED-TLM signal towers are ideal for status indication in commercial & industrial signalling applications where a local signal is required
- Two selectable stages of alarm, flashing or continuous (static) mode
- Audible module option that can be fitted anywhere in the modular stack
- Dustproof and weatherproof - IP54/65 protection

NEW



144-5948	Green, Red, Surface Mount, 24Vdc	R 1 507,29
144-5949	Amber, Green, Red, Surface Mount, 24Vdc	R 2 150,04
865-1744	Sounder Module - 24Vdc	R 383,11

LED Traffic Light Modules & Brackets

- LED Traffic Lights designed for industrial & commercial signalling applications where a low maintenance, long life and a cost effective solution is needed
- Externally controlled via either a logic controller (PLC) or switched inputs
- Continuously rated 36 SMT LEDs with low current consumption and 120° prime light output, sealed to IP65
- Each LED module can be either surface mounted or mounted to 1, 2 or 3 way brackets



122-6685	LED Module - Amber - 20-30V	R 1 960,35
122-6686	LED Module - Red - 20-30V	R 1 960,35
122-6687	LED Module - Green - 20-30V	R 1 960,35
122-6691	LED Module - Amber - 40-380Vdc, 85-280Vac	R 1 960,04
122-6692	LED Module - Red - 40-380Vdc, 85-280Vac	R 1 960,35
122-6693	LED Module - Green - 40-380Vdc, 85-280Vac	R 1 960,05
122-6694	Bracket Single Traffic Light & Glands	R 531,27
122-6695	Bracket Double Traffic Light & Glands	R 602,14
122-6696	Bracket Triple Traffic Light & Glands	R 673,33

Eco LEDA100 LED Beacon with Buzzer

- Beacon with integral 80dB audible buzzer offering two selectable stages of alarm, flashing or continuous (static) mode selected by PCB jumper
- The LED ECO range offers a cost effective alternative against more traditional incandescent lamp beacons with longer life and increased reliability
- Protected to IP65, 3 point mounting and multi-voltage 40-380Vdc, 85-285Vac supply input



865-1647	LEDA100 - Amber, 40-380Vdc, 85-285Vac	R 826,74
865-1656	LEDA100 - Red, 40-380Vdc, 85-285Vac	R 826,59
865-1659	LEDA100 - Green, 40-380Vdc, 85-285Vac	R 826,87

Ready to Use Traffic Lights

- Ready to use 3-way traffic lights with a choice of AC/DC supply voltages
- Require external control via either a logic controller (PLC) or similar
- Each module uses 36 SMT LEDs and provides 120° prime light output
- Sealed to IP65 with glanded cable entry - ideal for outdoor use



122-6701	LED Traffic Light 3 way - 8-20Vac/dc	R 6 683,42
122-6702	LED Traffic Light 3 way - 20-30Vac/dc	R 6 683,42
122-6704	LED Traffic Light 3 way - 40-380Vdc/85-280Vac	R 6 690,60

EEM-EM Series Power Meters

- Three-phase power meters for active power measurement with either 1/5A CT input or 80A direct current input
- Suitable for network voltages up to 500V, with S0 output, digital input and RS-485 interface
- Options with Modbus RTU and Modbus TCP Ethernet communications
- Certified in accordance with the MID directive



NEW

174-3464	Modbus comms, CT input	R 5 443,76
174-3465	Modbus RTU comms, CT input	R 8 193,08
174-3463	Modbus/TCP comms, CT input	R 5 938,63
175-0480	Modbus comms, direct input 80A	R 5 663,74
175-0481	Modbus RTU comms, direct input 80A	R 5 718,65
175-0482	Modbus/TCP comms, direct input 80A	R 8 742,90

PACT RCP Current Transformers - 4000A

- Each set consists of a Rogowski coil with signal lead and DIN rail measuring transducer
- The 0-1A output of the transducer can be set to the following ranges: 100A, 250A, 400A, 630A, 1000A, 1500A, 2000A, 4000A
- Can be used for accurately measuring AC currents in power lines or busbars



NEW

174-3479	300mm OD Coil & Transducer - 5m lead	R 7 707,85
174-3478	300mm OD Coil & Transducer - 10m lead	R 8 326,46
174-3475	450mm OD Coil & Transducer - 10m lead	R 8 363,58
174-3476	600mm OD UV Coil & Transducer - 10m lead	R 8 326,46
174-3477	600mm OD UV resist Coil & Transducer - 10m lead	R 12 297,93

Safe Energy Control Surge Protection

- A choice of Safe Energy Control (SEC) protective devices designed to guard circuits against lightning currents and surge voltages
- FLASHTRAB devices offer primary protection - either type 1 or 2 spark or varistor technology
- PLUGTRAB devices offer circuit level protection using pluggable varistor technology



890-3702	1 Ph, 350Vac 1.5kV FLASHTRAB - 2905415	R 7 188,44
890-3714	3 Ph, 350Vac 1.5kV FLASHTRAB - 2905421	R 15 327,78
890-3718	3 Ph, 440Vac 2.5kV FLASHTRAB - 2905988	R 16 682,77
890-3720	3 Ph, 350Vac 1.5kV FLASHTRAB - 2905469	R 13 826,48
890-3727	1 Ph, 350Vac 1.5kV FLASHTRAB - 2905466	R 8 293,77
890-3752	1 Ph, 230Vac PLUGTRAB - 2905229	R 1 959,14
890-3758	1 Ph, 120Vac PLUGTRAB - 2905228	R 1 958,90
890-3761	1 Ph, 24Vac PLUGTRAB - 2905223	R 1 958,90
890-3764	3 Ph, 230/400Vac PLUGTRAB - 2905230	R 3 373,94

On & Off Delay Timers

- A range of on or off delay timers in 6.2mm wide DIN rail mount housings with a choice of either voltage or dry contact closure control
- Delay time is set via front facing thumbwheel
- 24Vdc supply with LED status indication
- Ideal for lighting, door or other building control applications



684-3651	On-delay timer, voltage control, 0.1-10sec	R 731,42
684-3654	On-delay timer, voltage control, 3-300sec	R 731,42
684-3660	On-delay timer, contact control, 0.1-10sec	R 731,42
684-3664	On-delay timer, contact control, 3-300sec	R 767,99
684-3670	Off-delay timer, contact control, 0.1-10sec	R 731,42
684-3689	Off-delay timer, contact control, 3-300sec	R 1 011,93
684-3682	Off-delay timer, contact control, 0.3-30min	R 1 011,93

STEP DIN Rail Power Supplies

- A range of DIN Rail mounting switched mode power supplies ideal for use in distribution and building control panels
- Complete range available with 5v, 12v, 24v and 48v DC outputs (higher current output offer voltage adjustment)
- FLAT design versions are extra low profile - only 43mm high - ideal for terminal boxes or consumer units



708-0448	12Vdc 1A - 2868538	R 975,12
540-753	12Vdc 1.5A - 2868667	R 1 105,87
708-0457	12Vdc 1.5A FLAT design - 2868554	R 1 013,73
540-763	12Vdc 3A - 2868570	R 1 614,09
540-735	24Vdc 0.75A - 2868635	R 1 002,25
665-7810	24Vdc 0.75A FLAT design - 2868622	R 664,06
540-757	24Vdc 1.75A - 2868648	R 1 462,98
540-731	24Vdc 2.5A - 2868651	R 1 634,45
540-729	24Vdc 4A - 2868664	R 2 328,34

Power over Ethernet Switch

- Power-over-Ethernet unmanaged switch which conforms to IEEE 802.3at
- Features four PoE+ ports and one standard RJ45 port, all with 10/100 Mbps speeds
- LED status indication and wide -40° ... +75°C temperature range
- Supply range 18-57Vdc



801-7403	Ethernet Switch with PoE 1001T+4POE	R 6 309,80
-----------------	-------------------------------------	-------------------

ProTac III Hearing Protection Headset

- Dual shell design
- Level-dependent function for ambient listening
- 3.5 mm jack, listen only stereo input, limited to 80 db
- Connects to external devices, mobile, 2 way radio and Ipod
- Voice guided menu system
- User-friendly push buttons
- Volume adjustment
- Automatic power off after 4 hours of non-use
- Requires two AA batteries - Alkaline - 100 hours of use


3M Peltor™
123-8888 32db

R1 892,72
3M 4279 Half Mask Respirator

- Organic Vapour/ Inorganic/Acid Gas and Ammonia Respirator 4279
- This respirator provides protection against organic vapours, inorganic, acid gases and ammonia concentrations of up to 10⁻¹ WEL or 1000ppm, whichever is the lower and protection of up to 10⁻¹ WEL for particulates (assigned protection factor).
- Four-point strap adjustment ensures excellent fit with maximum comfort and minimum pressure
- Integral filters


3M
287-2649
R 764,55
Steelite Lusum Men's Black/Red Suede Trainer
NEW

- Low profile safety trainer with eye catching two tone colouring
- Heat resistant rubber outsole with steel toecap and midsole
- Anti-static footwear
- Energy absorbing seat region
- Lightweight EVA cushioned midsole
- Removable EVA cushion footbed
- Fuel and oil resistant outsole



164-2701	5	R 1 229,03
164-2702	6	R 1 229,03
164-2703	7	R 1 229,03
164-2704	8	R 1 229,03
164-2705	9	R 1 229,03
164-2707	10	R 1 254,11
164-2708	11	R 1 229,03

Nylon ESD Gloves

- ESD knitted protection glove
- Palm coated with nitrile foam
- The thin design improves the handling of ever smaller components
- Antistatic properties are obtained by adding carbon fibres to the nylon liner, which results in a very high level of ESD prevention
- Suitable for use in electronic manufacture, pre and post painting areas and controlled-environments (eg clean rooms), air-chambers


Ansell
806-4706 8 - M

R 175,69
806-4718 10 - XL

R 175,74
806-4715 9 - L

R 175,28
Worker Plus Trousers

- Regular fit, straight legged & triple stitched
- Reinforced stress areas, reinforced knee support
- Polyester knee pad inserts with tuck away holster pockets
- Ideal for site work with excellent protection and designed for hard-wearing



124-9546	30"	R 811,33
124-9547	32"	R 811,87
124-9548	34"	R 811,72
124-9549	36"	R 811,57
124-9550	38"	R 811,43

Spartan™ 3-Point Harness

- With one dorsal attachment D-ring and front textile loops for fall arrest
- Adjustable leg straps and chest straps
- Working positioning belt for extra comfort adjustable
- Lateral D-ring for work positioning
- Parachute Buckle, Sit Strap
- Polyester webbing 44 mm
- Breaking strength 23 kN
- Weight 1430 g


861-0393
R 1 178,09
Contour Safety Glasses Anti-Mist

- Super lightweight model (only 21g) which offers continual comfort
- Sports shaped temples for maximum comfort
- Tipgrip side arms to ensure they do not slip
- Panoramic field of vision
- Integral side shield
- Provide 100% UVA and UVB protection


bolle SAFETY
295-823 Single

R237,45
768-8736 1 Box of 10

R1 581,37
SA30015 Men's M Hi Vis Jacket

- Full length storm flap
- YKK zip with 2 side pockets
- Mobile phone pocket
- Action back pleats
- Extra bar tacks for added strength
- Adjustable cuffs & adjustable waist


NEW

172-0016	M - Yellow	R 1 421,29
172-0017	L - Yellow	R 1 421,29
172-0018	XL - Yellow	R 1 421,29
172-0012	M - Orange	R 1 421,29
172-0013	L - Orange	R 1 421,29
172-0015	XL - Orange	R 1 421,29

Advance Tape AT132 High Tack Duct Tape

- Designed with a high tack for instant grab
- Water resistant finish
- Good abrasion resistance
- Conforms to the surface it is used on
- Available in black or silver



111-6734 Black **R 137,01**
914-8195 Silver **R 112,77**

Ambersil High Powered Air Duster

- Non-flammable dry air blast cleaner
- Extension tube helps to reach inaccessible / remote areas
- Meets military specification - NATO catalogue No. 6830-99-382612
- Safe on plastics, rubbers and painted surfaces



165-4987 400ml **R 579,08**

Pink Firestop Putty Aerosol

- Suitable for use in maintaining the fire rating of walls, floors or door frames where there are large gaps or voids
- Up to 4 hour fire rating can be achieved
- Coloured pink for easy identification
- Non-ozone-depleting propellant
- Airtight and waterproof, can be sanded and painted



447-9719 750ml **R 573,53**

3M General Purpose Masking Tape 201E

- Highly conformable crepe paper
- Ideal for paint masking or surface protection
- Residue-free removal in one piece
- Tears easily from the roll
- Suitable for general industrial low temperature paint masking applications and is also suitable for use in low temperature bake ovens



124-0914 **R 81,34**

3M White Spray Adhesive

- Extremely versatile, fast-drying spray adhesive that bonds a wide range of lightweight materials
- Permanent bond provides fast results to keep projects moving ahead
- Easy to dispense, with no soak-in or yellowing over time



154-8156 500ml **R 407,08**

Hand & Skin Wipes

- Pre-soaked wipes have a pleasant light citric odour and help eradicate germs, leaving hands feeling soft, clean and moistened
- Soaked in a solution of natural solvents, bactericides, surfactants and water
- pH 6.5
- Effective on dirt and grease
- Supplied in Tubs of 150



698-8048 **R 362,30**

Pipe Insulation Tape

- Self adhesive insulation tape
- Especially suitable for insulating short pipe runs, valves, tee joints and areas with difficult access
- Temperature range from -40°C to +85°C
- When used with Class 0 product allows the tube and tape together to be Class 0 rated



486-069 Tape width: 50 mm

R 610,22

Loctite® 290 Penetrating

- Medium strength for locking and sealing of threaded fasteners and close-fitting parts after assembly
- Penetrates tightened threads, porous materials and cracks by capillary action
- Cure time: 3 hours



496-158 10ml

R 246,47

408-4119 50ml

R 802,26

Treston supply a range of Workbench solutions for the electronic industry through RS Components

We specialise in ergonomics, functionality and efficiency in the workplace.

We also provide seating, lighting, small parts storage solutions as well as full installation services for all of our Industrial Furniture range.



LEARN MORE ABOUT ESD AND EPA AREAS



www.treston.com/esd
Search Treston ESD on RS Online

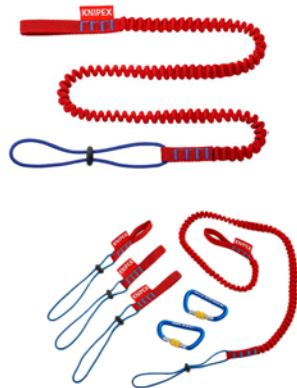


Tethered Tools from Knipex

Tool tethering from Knipex protects against serious injuries, damage to property or losses from dropped tools. As well as a range of tools, RS can supply the straps, lanyards and carabiners to connect the tools to users.

Tool Lanyard Holders

- Products for use in conjunction with Knipex tethered tools
- Reliably prevent your tools from falling with these attachments
- Suitable for use with all Knipex tethered tools



136-7454	Fabric lanyard 1.5kg	R 400,20
136-7456	Fabric wrist strap 1.5kg	R 449,01
136-7457	Aluminium carabiner	R 620,39
136-7458	Tool lanyard set	R 1 314,50



Tethered Tools

- A variety of tools with a tethering attachment for use in conjunction with lanyards and tool holders
- Manufactured in Vanadium Steel



124-5827	Combination Tool & Pliers	R 1 266,85
124-5828	Long Nose Pliers	R 719,52
124-5829	Bent Nose Pliers	R 778,02
124-5833	Water Pump Plier 180mm	R 799,54
124-5835	Water Pump Plier 300mm	R 1 111,52
124-5830	Diagonal Cutters 160mm	R 737,18
124-5832	Diagonal Cutters 200mm	R 854,78
124-5831	Bolt Cutters	R 1 062,23
124-5836	Cable Shears	R 877,66



SMART. TIDY. ORGANISED.



BAHCO TOOL MANAGEMENT SYSTEM.



BAHCO 26" Next Generation Tool Trolley

STORAGE HUB E72

The E72 Storage HUB has been designed to offer market-leading levels of safety and performance in a streamlined model. The innovative, strong case is a key element at the core of the E72 and the E77 Premium HUB. Thanks to the subtle design with rounded corners, shock-absorbing corner bumpers and the new locking system with a round key, you are assured of optimal safety in every working environment. This tool trolley brings together many of our customers' most demanded features and can be customised with side-mounted accessories.

RS Product Code: 176-2438

BAHCO 26" Next Generation Tool Trolley

STORAGE HUB E77

The E77 Premium Storage HUB combines top of the line safety with innovative design to meet the needs of people working in heavy-duty environments. The innovative, strong case is a key element at the core of the E77. Its exclusive style and ingenious safety features—from anti-tilting drawers with individual shock-protecting bumpers to precision wheels with a cutting-edge dual-braking system—set it apart as a premium solution.

With modular functionality, it can also be combined with a large range of innovative accessories that can be attached to the top, side and bottom of the trolley, to simplify your work and improve efficiency. It is a perfect combination of convenience, safety and top performance.

RS Product Code: 176-2468



Precision Torque Impact Wrenches

- 1/2" and 3/4" impact wrenches have 3 impact modes
- Low - runs at a slower speed for more delicate fastening
- High - runs at full speed for general applications
- Precision - runs at full speed until tool impacts, then tool pauses allowing user to stop, then impacts at 3100ipm if more torque is required



175-1187	1/2" supplied with 2 x 5Ah batteries	R 11 436,70
175-1188	1/2" baR e unit	R 5 220,45
175-1189	3/4" baR e unit	R 5 823,97

A002 Self Centering Drills

- Ideal for use on non-flat metal surfaces
- Suitable for both machine and hand use
- 3-6.5mm sold in packs of 5, over 7mm sold individually
- Available in 3-13mm sizes, visit our website for other sizes



794-7246	3.0mm	R 86,49
794-7265	3.5mm	R 103,62
794-7278	4.0mm	R 113,02
794-7293	4.5mm	R 132,58
794-7307	5.0mm	R 142,36
794-7325	5.5mm	R 181,48
794-7335	6.0mm	R 183,02
794-7353	6.5mm	R 224,92
794-7366	7.0mm	R 128,90
794-7372	7.5mm	R 82,37
794-7375	8.0mm	R 90,70
794-7379	8.5mm	R 106,47
794-7388	9.0mm	R 122,68
794-7381	9.5mm	R 146,74
794-7385	10.0mm	R 146,57

HSS Jobber Drill Sets

- Titanium Nitride coated (TiN) drill with longer shaft length
- Right angle cutting tip with 118° cutting angle
- Suitable for metals, woods, plastics
- 13-piece set contains: 1.5-6.5mm in 0.5mm increments plus 3.3 and 4.2mm
- 19-piece set contains: 1.0-10.0mm in 0.5mm increments



794-7675	13-Piece	R 502,83
794-7678	19-Piece	R 1 277,34

20-Piece Fatmax™ Screwdriver Set

- Comprehensive screwdriver set from the popular Fatmax™ brand
- High grade steel bar allows for high torque & reduces the chance of tip breakage, whilst anti-slip soft grip ensures user comfort and greater torque application
- Set contains: parallel tip 2.5x50, 3x100, 4x100, 4x150, 5.5x150 & 6.5x30mm; flared tip: 4x100, 5.5x100 & 8x150mm; Phillips tip: PH00x50, PH0x75, PH1x30, PH1x100, PH2x125 & PH3x150mm; Pozzi tip: PZ0x75, PZ1x100, PZ2x30, PZ2x125 & PZ3x150mm in a plastic storage case



182-385	R 2 667,74
---------	------------

Tylon Tape Measures

- Professional Stanley Tylon coated tape measure with a matt finish blade
- Shock-resistant case which will withstand shocks and knocks
- Ergonomically cushioned grip
- Available in 3, 5 & 8m versions



776-9775	3m	R 117,23
776-9784	5m	R 186,16
776-9787	8m	R 351,05

94-Piece Mechanics Tool Kit

- Great value, industrial quality tool kit comprising 1/2" and 3/4" socket sets, screwdrivers, bit set and spanner set
- Stored in a sturdy lockable case
- For full contents visit our website



734-8889	R 1 834,91
----------	------------

3 YEAR WARRANTY

Magnetic Pick Up Tool

- Telescopic magnetic pickup tool with stainless steel shaft
- Extends from 175 to 762mm
- Head diameter 15.6mm
- Magnetic lifting capacity 3.6kg



423-6635	R 234,89
----------	----------

3 YEAR WARRANTY

Tough Plastic Tool Box

- A hard-wearing high-quality plastic tool box with a large internal storage section
- Features two secure latches and a padlock clasp for added security
- Ideal for use on a busy job site
- 494x263x250mm



833-5988	R 514,22
----------	----------

3 YEAR WARRANTY

18V Drill/Driver

- Ultra-compact lightweight design that makes it perfect for use in tight areas.
- Three customisable ToolConnect modes allow the user to switch between different application settings quickly and easily.

SAVE 10%



171-6222 R7 255,09

CarryLite Case

- Professional cases, moulded in polypropylene with virtually unbreakable transparent polycarbonate lid
- A3 size available in either 55mm or 80mm depth
- Ergonomic carry handle with two strong sliding locks to secure the lid
- U-profile lid keep contents in position
- Removable inserts allowing for individual configuration

SAVE UP TO 20%



111-6114 55mm deep 16 compartments **R 1 047,74**
111-6118 80mm deep 9 compartments **R 1 288,15**

Compact Non-Contact IR Temperature Sensor

- Built-in backlit display and controls
- Voltage output: 0 to 5 Vdc, 1 to 5 Vdc, or 0 to 10 Vdc linear output for measured temperature
- Adjustable temperature range scaling
- Temperature range 0 °C to +1000 °C
- IP65 rated

SAVE 15%



161-8103 R 4 526,40

IR Thermometer / Clampmeter Bundle

- Save 10% when you buy the RS Pro TG301 Thermal IR Thermometer and the RS380 Clampmeter together in this great value bundle
- RS Pro TG-301 Thermal Imaging IR thermometer 918-1085 lets you see the heat map on the display so you know exactly where to target the temperature measurement spot
- Easily finds unseen hot and cold spots for instant troubleshooting
- RS Pro RS380 123-1935 is a great value clamp meter which fulfils all the requirements for safe AC current measurement
- Its small body and jaws can access and test in tightly constrained locations. It is CAT III 600V

SAVE 10%



144-6599 R 5 020,41

Raspberry Pi 3 and Pulse kit

- Get Amazon Alexa on your Raspberry Pi
- Raspberry Pi 3 B Computer Board (RS 896-8660)
- pi-topPULSE (RS 136-7934)
- Official microUSB Power Supply Unit (RS 909-8126)
- 16 GB micro-SD card with NOOBS operating system (RS 121-3897)

SAVE 15%



146-6431 R 1 607,02

216-Piece Maintenance Tool Kit

- Comprehensive drill and bit set supplied in a plastic foldout storage case
- Perfect for any tradesman or maintenance man and an ideal first time buy for anyone new to the industry
- Contains: standard and long flat and masonry drills,
- Torx, hex, square, Phillips and Pozidriv bits, tape measure and spirit level
- For full contents visit our website

SAVE 25%



458-1913 R 3 133,42

Single Channel Timeswitches

- Digital timeswitches with LCD display and daily/weekly/pulsed switching for either lighting or heating control, breaks, shift changes or other applications
- On/Off output version has 25 program entries, pulsed output has 16 program entries
- SPCO contacts 16A (NO) 5A (N/C) and DIN rail mounting
- 6 years back-up battery reserve

SAVE 25%



896-6876 110-240Vac on/off output **R 1 077,48**
896-6885 110-240Vac 1-59sec pulse output **R 1 077,48**

Matt Spray Paint

- 100% ozone friendly
- Excellent coverage, flow and opacity
- Fast drying
- Chemical and water resistance
- Bare metal adhesion

SAVE 25%



764-3039 400ml **R 140,33**

Terms and Conditions: Promotional prices are valid until 30 November 2018. This promotion is only open to South African account holders i.e. delivery in SA. Offers savings calculated on prices charged in September 2018. No further discounts will be applied. Any participation must be in compliance with any contractual framework, where applicable. RS reserves the right to change the promotional offers and prices at any time. Offers are available while stocks last. For full T&C's visit za.rs-online.com.