

Surgistool®

Maintenance Manual

REF 0830



Table of Contents

Warning/Caution/Note Definition	2
Summary of safety precautions	2
Introduction for service	3
Expected service life	3
Contact information	3
Serial number location	3
Preventive maintenance	4
Troubleshooting	5
Service	6
Jack assembly replacement	6
Base hood removal	7
Brake adjustment	8
Remove excess air from the hydraulic system	8
Jack descent rate adjustment	9
Checking the hydraulic fluid level	9
Hydraulic valve replacement	10
Brake assembly - 0830-010-010	11
Base assembly	12
Base assembly, Euro - 0830-191-100	14
Round seat/base assembly	16
Round seat/base assembly, Euro	17
Obround seat/base assembly	18
Obround seat/base assembly, Euro	19
Motorcycle seat/base assembly	20
Motorcycle seat/base assembly, Euro	21
Round/obround seat bracket assembly - 0830-020-100/0830-030-100/0830-091-100/0830-091-110	22
Motorcycle seat bracket assembly, 0830-201-100/0830-291-010	25
Jack and control assembly - 0830-010-070	27
Jack assembly	28
Jack base assembly	30
Pump pedal assembly - 0830-010-030	31
Release pedal assembly - 0830-010-020	32
Backrest assembly option - 0830-700-001	33
Wrist rest assembly option - 0830-040-101/0830-291-100 (Euro)	35
2" seat riser assembly option - 0830-201-028	37

Warning/Caution/Note Definition

The words **WARNING**, **CAUTION**, and **NOTE** carry special meanings and should be carefully reviewed.

WARNING

Alerts the reader about a situation which, if not avoided, could result in death or serious injury. It may also describe potential serious adverse reactions and safety hazards.

CAUTION

Alerts the reader of a potentially hazardous situation which, if not avoided, may result in minor or moderate injury to the user or patient or damage to the product or other property. This includes special care necessary for the safe and effective use of the device and the care necessary to avoid damage to a device that may occur as a result of use or misuse.

Note - Provides special information to make maintenance easier or important instructions clearer.

Summary of safety precautions

Always read and strictly follow the warnings and cautions listed on this page. Service only by qualified personnel.

CAUTION

- Do not use other types of oil. Damage to the hydraulic jacks may occur.
-

Introduction for service

This manual assists you with the service of your Stryker product. Read this manual to service this product. This manual does not address the operation of this product. See the Operations Manual for operating and use instructions. To view your Operations Manual online, see <https://techweb.stryker.com/>.

Expected service life

Surgistool has a 10 year expected service life under normal use conditions and with appropriate periodic maintenance.

Contact information

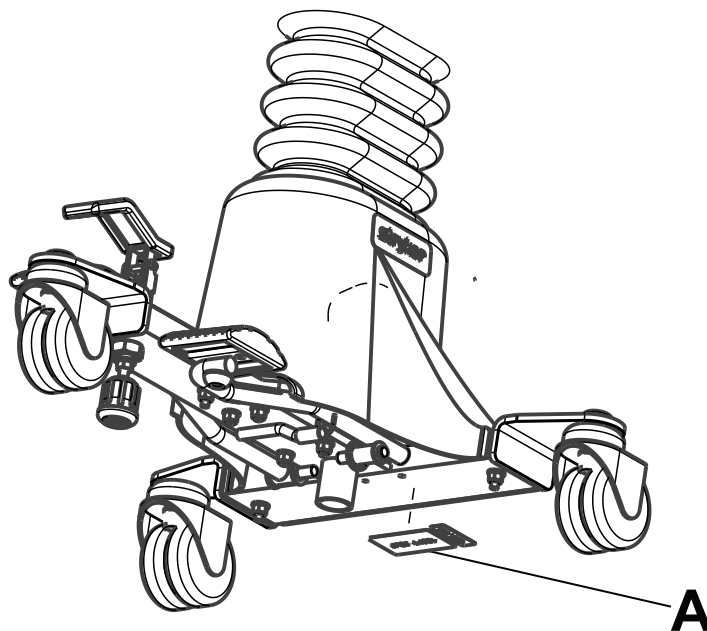
Contact Stryker Customer Service or Technical Support at: 1-800-327-0770.

Stryker Medical
3800 E. Centre Avenue
Portage, MI 49002
USA

To view your operations or maintenance manual online, see <https://techweb.stryker.com/>.

Have the serial number (A) of your Stryker product available when calling Stryker Customer Service or Technical Support. Include the serial number in all written communication.

Serial number location



Preventive maintenance

Remove the product from service before you perform the preventive maintenance inspection. Check all items listed during annual preventive maintenance for all Stryker Medical products. You may need to perform preventive maintenance checks more often based on your level of product usage. Service only by qualified personnel.

Note - Clean and disinfect the product before inspection.

Inspect the following items:

- _____ All fasteners are secure
- _____ Brake pedal locks and unlocks
- _____ Casters lock when the brake pedal is applied
- _____ Casters secure and swivel
- _____ Wrist rests swivel, raise, and lower
- _____ All adjustment knobs are intact and can be tightened and released
- _____ No rips or cracks in seat, backrest, or wrist rest covers
- _____ No leaks at hydraulic connections
- _____ Hydraulic jack holds its position
- _____ Hydraulic drop rate is correct
- _____ Hydraulic oil level is sufficient
- _____ Lubricate where required

Product serial number:
Completed by:
Date:

Troubleshooting

Verify proper operation after each step. When the problem is corrected, return the product to service. If assistance is needed at any time during troubleshooting, please contact a Stryker service technician at (800) 327-0770.

Problem or failure	Recommended action
Jack will not raise to full height	Add hydraulic fluid (<i>Checking the hydraulic fluid level</i> (page 9)).
Jack will not hold in raised position	Close the needle valve all the way. If the jack holds, replace the valve (<i>Hydraulic valve replacement</i> (page 10)). If the jack does not hold, replace the jack (<i>Jack assembly replacement</i> (page 6)).
Jack will not pump up	Remove excess air (vacuum) in the system (<i>Remove excess air from the hydraulic system</i> (page 8)). If the jack will not pump up, replace the jack (<i>Jack assembly replacement</i> (page 6)).

Service

Jack assembly replacement

Tools required:

- Large flat screwdriver
- Small flat screwdriver
- 5/32" hex wrench
- 7/16" combination wrench
- Pump spring compression tool (1210-001-003)
- Needle nose pliers

Procedure:

1. Using a 7/16" combination wrench, remove the four nuts (A) that secure the seat bracket weldment (B) (Figure 1). Remove the seat assembly.
2. Using needle nose pliers, remove the cotter pin (C) that secures the mounting plate weldment (D) to the jack shaft (Figure 2). Remove the mounting plate weldment.

Note - Use caution when you remove the mounting plate weldment, there is grease on the support shaft.

3. Using a small flat screwdriver, remove the three protective caps (E) from the base hood screws (F).
4. Using a 7/16" combination wrench and a 5/32" hex wrench, remove the three base hood screws (F), washers (G, M), and nuts (H) that secure the hood (I) to the base weldment (J).
5. Using needle nose pliers, remove the cotter pin (K) that secures the pump link (L) to the pump piston.
6. Using a pump spring compression tool (1210-001-003), press down on the jack spring guide (N) and jack spring (O).

Note - Make sure that you apply enough pressure on the jack spring retainer and jack spring so the pump piston does not come out of the jack base.

7. Using a large flat screwdriver, pry out the pump link (L) from the top of the jack spring and jack base to remove.
8. Remove the jack spring.
9. Remove the jack spring guide
10. Using a 5/32" hex wrench, remove the two bolts (P), lock washers (Q), and flat washers (R) that secure the valve assembly to the base weldment.
11. Using a 5/32" hex wrench, remove the four bolts (S) that secure the jack assembly to the base weldment.
12. Remove and discard the jack assembly.
13. Reverse steps to install the new jack assembly.

Note - Before you install the new jack assembly, pump up the jack all the way. Continue to pump ten times to force air through the system.

14. Verify proper operation before you return the product to service.

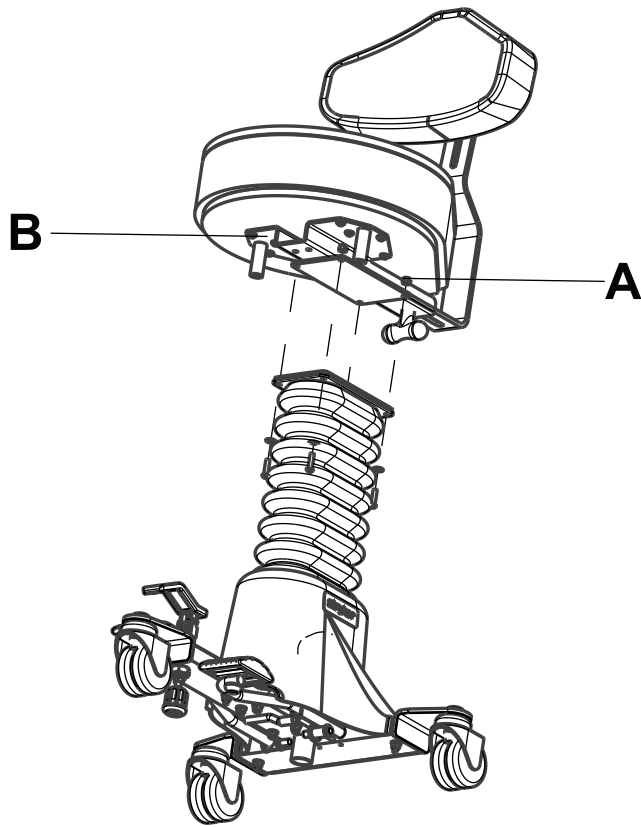


Figure 1 – Seat/base

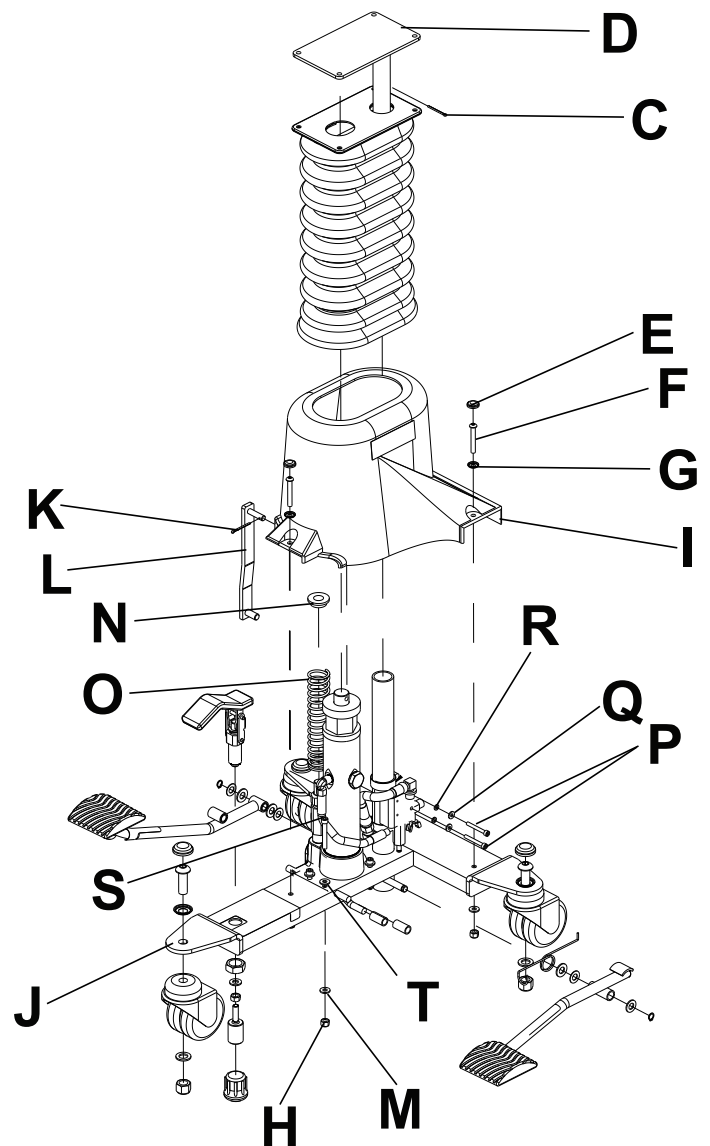


Figure 2 – Base

Base hood removal

Tools required:

- Small flat screwdriver
- 5/32" hex wrench
- 7/16" combination wrench
- Needle nose pliers

Procedure:

1. Using a 7/16" combination wrench and a 5/32" hex wrench, remove the four nuts (A) that secure the seat bracket weldment (B) (Figure 1). Remove the seat base assembly.
2. Using needle nose pliers, remove the cotter pin (C) that secures the mounting plate weldment (D) to the jack shaft (Figure 2). Remove the mounting plate weldment.

Note - Use caution when you remove the mounting plate weldment, there is grease on the support shaft.

3. Using a small flat screwdriver, remove the three protective caps (E) from the base hood screws (F).
4. Using a 7/16" combination wrench and a 5/32" hex wrench, remove the three base hood screws (F), washers (G, M), and nuts (H) that secure the base hood (I) to the base weldment (J).
5. Remove and discard the base hood.
6. Reverse steps to install the new base hood.
7. Verify proper operation before you return the product to service.

Brake adjustment

Tools required:

- 1/2" combination wrench

Procedure:

1. Using a 1/2" combination wrench, loosen the top jam nut (A) on the brake foot assembly (Figure 3).
2. Using your fingers, turn the brake shaft assembly (B).

Note - Turn the brake shaft assembly clockwise to loosen the brake tension. Turn the brake shaft assembly counterclockwise to tighten the brake tension.

3. When you achieve the desired tension, use a 1/2" combination wrench to tighten the top jam nut.
4. Verify proper operation before you return the product to service.

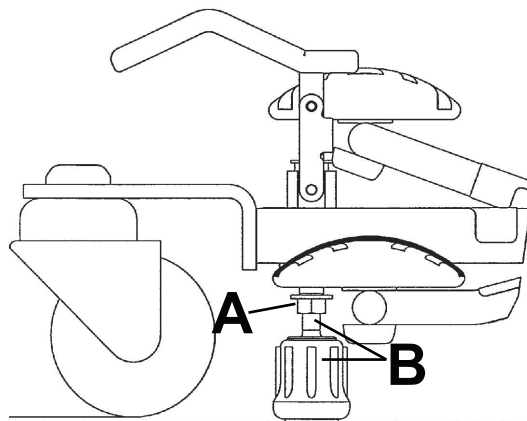


Figure 3 – Brake adjustment

Remove excess air from the hydraulic system

Tools required:

- None

Procedure:

1. Raise the product to the highest position.
2. Push down on the pump pedal several times to force the air through the system.
3. Verify proper operation before you return the product to service.

Jack descent rate adjustment

Tools required:

- None

Procedure:

1. Raise the product to the highest position.
2. Raise the base hood (*Base hood removal* (page 7)).

Note - Do not remove the base hood.

3. Reach under the base hood to locate the butterfly valve on the manifold assembly.
4. Using your finger, turn the butterfly valve to adjust the rate of descent.

Note

- Turn the butterfly valve clockwise to decrease the rate of descent or counterclockwise to increase the rate of descent.
 - The **Surgistool** user should sit on the stool and push down the release pedal to verify proper descent rate adjustment.
5. Verify proper operation before you return the product to service.

Checking the hydraulic fluid level

Tools required:

- Small flat screwdriver
- 5/32" hex wrench
- 7/16" combination wrench
- 3/4" combination wrench
- Needle nose pliers

Procedure:

1. Using a 7/16" combination wrench and a 5/32" hex wrench, remove the four nuts (A) that secure the seat bracket weldment (B) (Figure 1). Remove the seat base assembly.
2. Using needle nose pliers, remove the cotter pin (C) that secures the mounting plate weldment (D) to the jack shaft (Figure 2). Remove the mounting plate weldment.

Note - Use caution when you remove the mounting plate weldment, there is grease on the support shaft.

3. Using a small flat screwdriver, remove the three protective caps (E) from the base hood screws (F).
4. Using a 7/16" combination wrench and a 5/32" hex wrench, remove the three base hood screws (F), washers (G, M), and nuts (H) that secure the hood (I) to the base weldment (J).
5. Make sure that there are no hydraulic leaks. If leaks are observed, replace the jack (*Jack assembly replacement* (page 6)).
6. Push down on the release pedal. Push down on the jack shaft to lower the jack to the lowest position.
7. Using a 3/4" combination wrench, turn the fill plug located on the side of the reservoir counterclockwise to allow excess system pressure to vent. Remove the fill plug.
8. Make sure that the fluid is visible at the bottom of the fill hole. If fluid is not visible at the bottom of the fill hole, add **Mobil™ Aero™** HFA hydraulic oil (2020-070-475) until the fluid is visible.

CAUTION - Do not use other types of oil. Damage to the hydraulic jacks may occur.

9. Replace the fill plug.
10. Reverse steps to reinstall the base hood.

11. Verify proper operation before you return the product to service.

Hydraulic valve replacement

Tools required:

- Small flat screwdriver
- 5/32" hex wrench
- 7/16" combination wrench
- 3/4" combination wrench
- Needle nose pliers

1. Using a 7/16" combination wrench, remove the four nuts (A) that secure the seat bracket weldment (B) (Figure 1). Remove the seat assembly.
2. Using needle nose pliers, remove the cotter pin (C) that secures the mounting plate weldment (D) to the jack shaft (Figure 2). Remove the mounting plate weldment.

Note - Use caution when you remove the mounting plate weldment, there is grease on the support shaft.

3. Using a small flat screwdriver, remove the three protective caps (E) from the base hood screws (F).
4. Using a 7/16" combination wrench and a 5/32" hex wrench, remove the three base hood screws (F), washers (G, M), and nuts (H) that secure the hood (I) to the base weldment (J).
5. Turn the butterfly valve (A) clockwise to close off the needle valve (Figure 4).
6. Using a small flat screwdriver, remove the cap screw and washers that hold the manifold assembly (B) on the hydraulic jack.
7. Using a 3/4" combination wrench, remove the needle valve (C) from the manifold assembly.
8. Reverse steps to install the supplied needle valve.
9. Verify proper operation before you return the product to service.

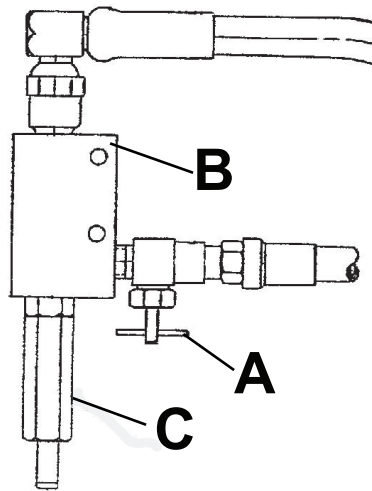
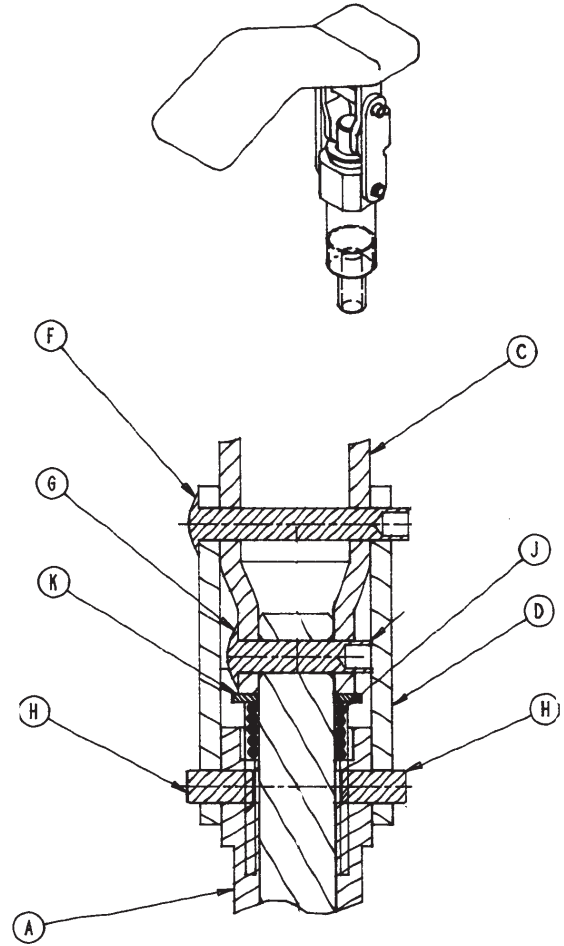
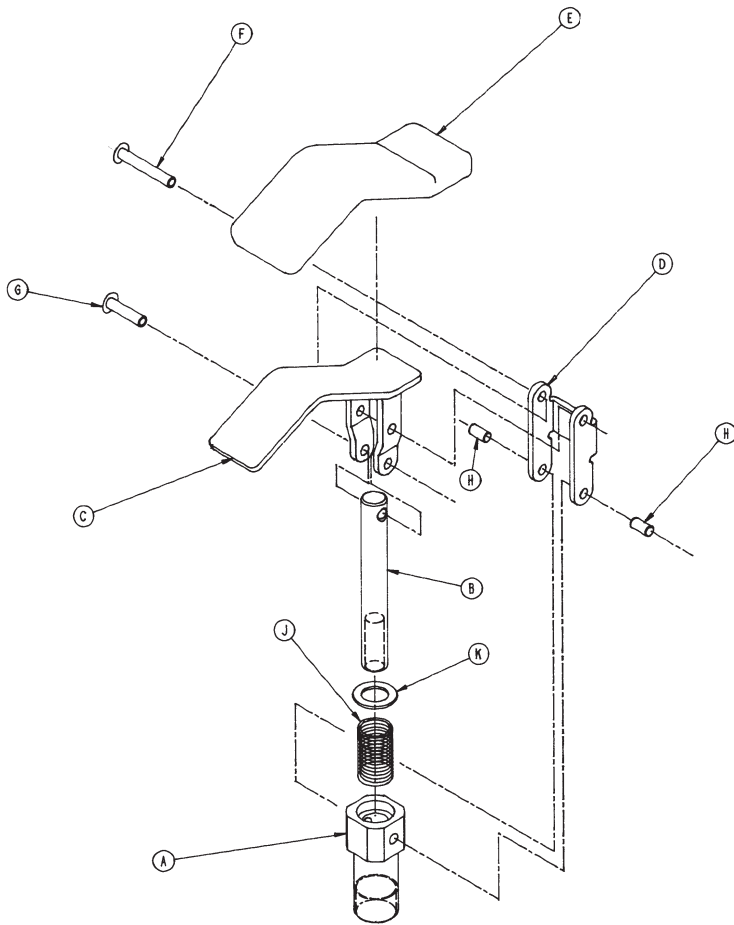


Figure 4 – Hydraulic valve replacement

Brake assembly - 0830-010-010

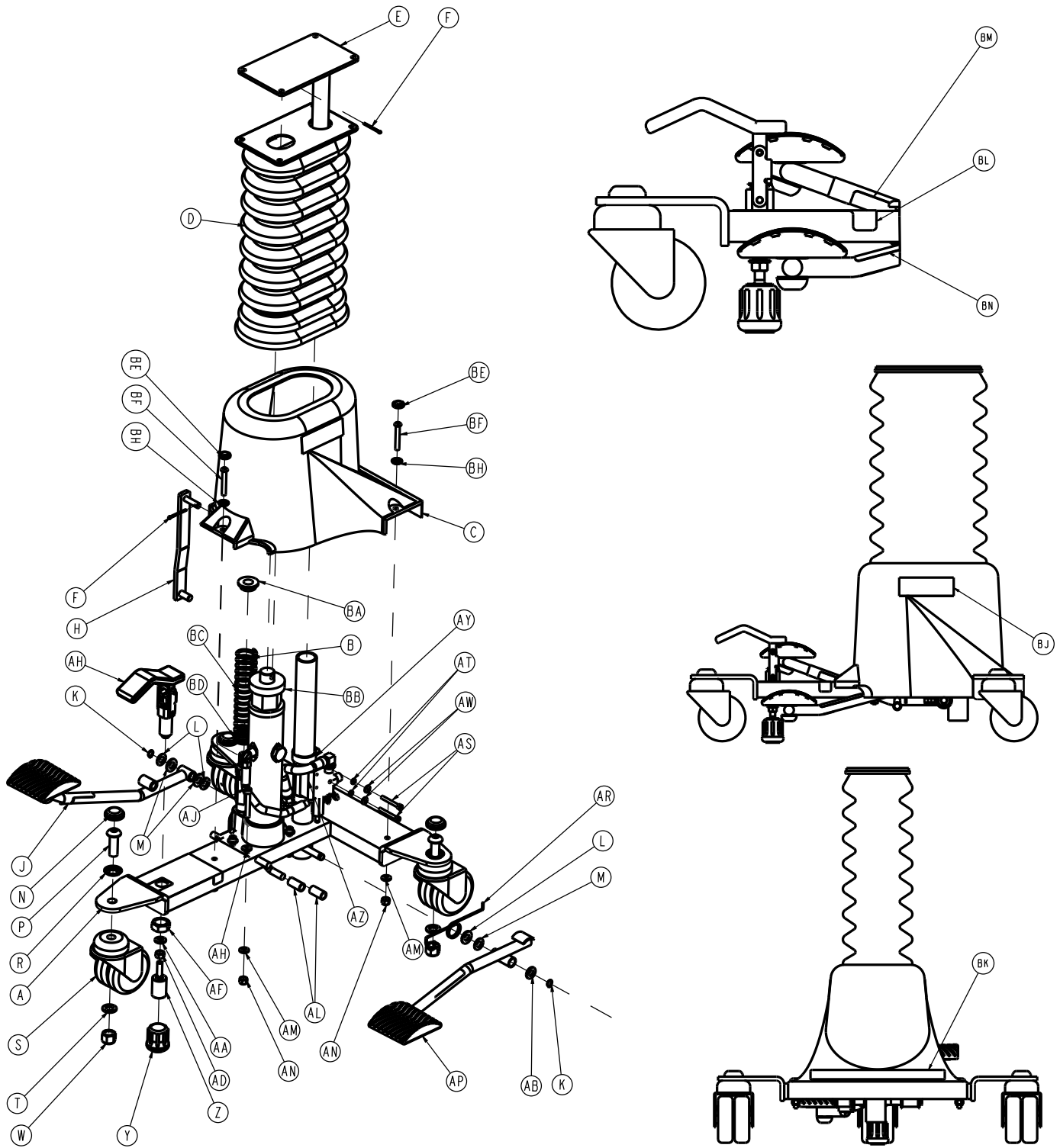
Rev B (Reference only)



Item	Number	Name	Quantity
A	0830-010-015	Mounting block	1
B	0830-010-014	Actuator shaft	1
C	0830-010-011	Pedal assembly	1
D	0830-010-013	Lever arm	1
E	0716-001-275	Brake pedal	1
F	0025-106-000	Rivet, semi-tubular	1
G	0025-113-000	Rivet, semi-tubular	1
H	0026-215-000	Dowel pin	2
J	0038-279-000	Compression spring	1
K	0011-288-000	Flat washer	1

Base assembly

0830-010-100 Rev U (Reference only)

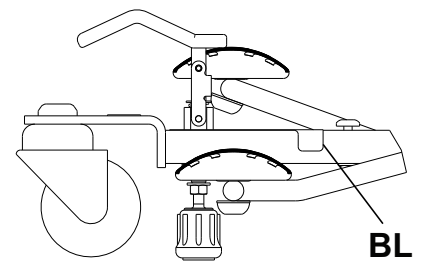
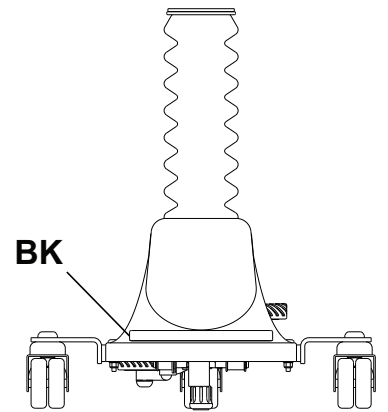
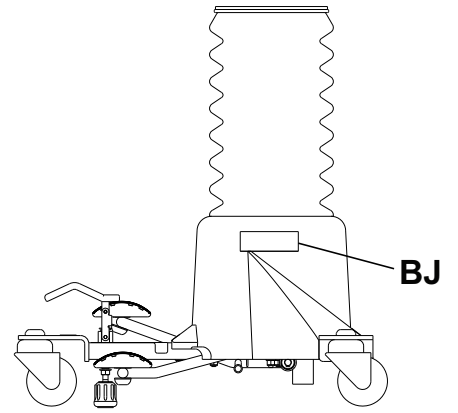
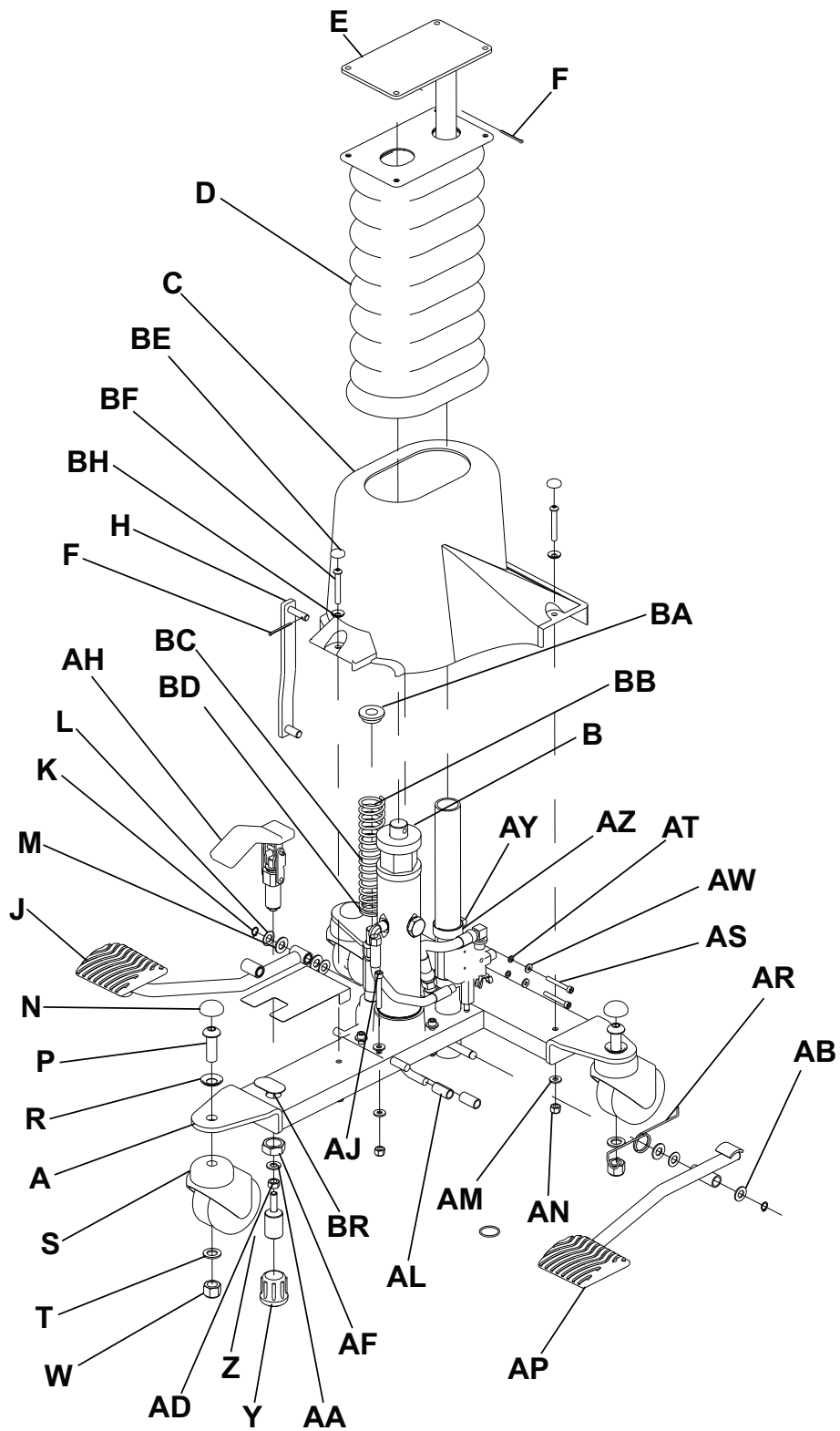


Item	Number	Name	Quantity
A	0830-010-040	Base weldment	1
B	0830-010-070	Jack and control assembly	1
C	0830-010-050	Surgistool II hood	1
D	0830-010-051	Bellows	1

Item	Number	Name	Quantity
E	0830-010-055	Mounting plate weldment	1
F	0027-003-000	Cotter pin	2
H	0830-010-080	Pump link weldment	1
J	0830-010-030	Pump pedal assembly	1
K	0028-095-000	Retaining ring	2
L	0011-004-000	Flat washer	3
M	0014-020-000	Flat washer	3
N	0037-196-000	Protective cap	3
P	0004-186-000	Button head cap screw	3
R	0037-080-000	Retaining washer	3
S	0830-010-053	Dual wheel caster	3
T	0011-013-000	Flat washer	3
W	0016-064-000	Nylock hex nut	3
Y	0830-010-035	Heavy duty crutch tip #19	1
Z	0830-010-034	Foot	1
AA	0011-003-000	Flat washer	1
AB	0014-021-000	Flat washer	1
AD	0015-012-000	5/16-18 nut	1
AF	0015-061-000	Hex jam nut	1
AH	0830-010-010	Brake assembly	1
AJ	0004-020-000	1/4-20 socket head cap screw	4
AL	0763-020-021	Hose sleeve	3
AM	0011-063-000	Flat washer	11
AN	0016-028-000	Fiberlock hex nut	7
AP	0830-010-020	Release pedal assembly	1
AR	0830-010-024	Release spring	1
AS	0004-085-000	10-32 socket head cap screw	2
AT	0012-005-000	Lock washer	2
AW	0011-302-000	Plain washer	2
AY	0038-015-000	Adjustable clamp	2
AZ	0763-020-013	Manifold mounting bracket	1
BA	0715-001-133	Spring guide	1
BB	0763-001-015	Jack spring	1
BC	0763-001-016	Spring guide	1
BD	0390-001-067	Jack washer	1
BE	0037-055-000	Protective cap	3
BF	0004-204-000	Button head cap screw (1/4-20 x 1.75)	3
BH	0037-056-000	Retaining washer	3
BJ	0946-001-060	Label, Stryker	2
BK	0830-090-001	Label, rear	1
BL	0830-090-002	Label, front	1
BM	0830-090-006	Label, pump	1
BN	0830-090-007	Label, release	1

Base assembly, Euro - 0830-191-100

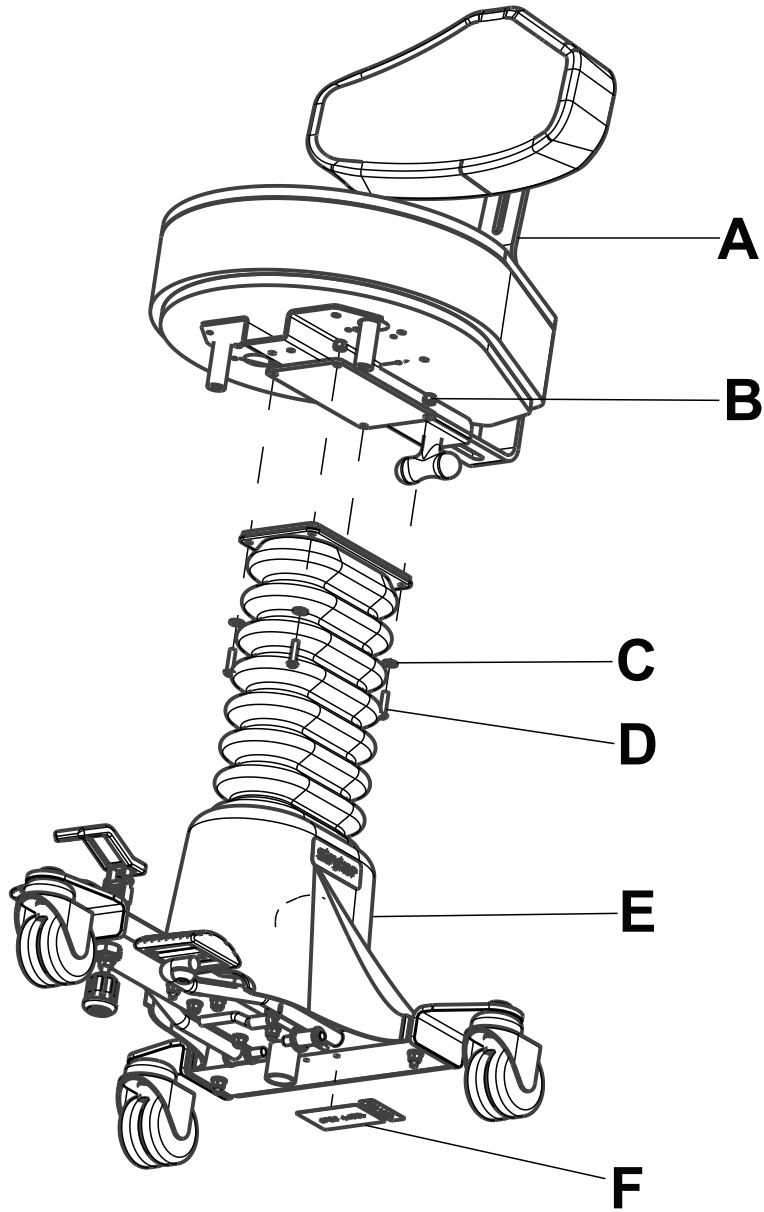
Rev E (Reference only)



Item	Number	Name	Quantity
A	0830-010-040	Base weldment	1
B	0830-010-070	Jack and control assembly	1
C	0830-010-050	Surgistool II Hood	1
D	0830-010-051	Bellows	1
E	0830-010-055	Mounting plate weldment	1
F	0027-003-000	Cotter pin	2
H	0830-010-080	Pump link weldment	1
J	0830-010-030	Pump pedal assembly	1
K	0028-095-000	Retaining ring	2
L	0011-004-000	Flat washer	3
M	0014-020-000	Flat washer	3
N	0037-196-000	Protective cap	3
P	0004-186-000	Button head cap screw	3
R	0037-080-000	Retaining washer	3
S	0830-010-053	Caster	3
T	0011-013-000	Flat washer	3
W	0016-064-000	Nylock nut	3
Y	0830-010-035	Brake tip	1
Z	0830-010-034	Foot	1
AA	0011-003-000	Flat washer	1
AB	0004-021-000	Flat washer	1
AD	0015-012-000	Nut	1
AF	0015-061-000	Hex jam nut	1
AH	0830-010-010	Brake assembly	1
AJ	0004-020-000	Socket head cap screw	4
AL	0763-020-021	Hose sleeve	3
AM	0011-063-000	Flat washer	11
AN	0016-028-000	Nylock nut	7
AP	0830-010-020	Release pedal assembly	1
AR	0830-010-024	Release spring	1
AS	0004-085-000	Socket head cap screw	2
AT	0012-005-000	Lock washer	2
AW	0011-302-000	Plain washer	2
AY	0038-015-000	Adjustable clamp	2
AZ	0763-020-013	Manifold mounting bracket	1
BA	0715-001-133	Spring guide	1
BB	0763-001-015	Jack spring	1
BC	0763-001-016	Spring guide	1
BD	0390-001-067	Jack washer	1
BE	0037-055-000	Protective cap	3
BF	0004-204-000	Cap screw	3
BH	0037-056-000	Retaining washer	3
BJ	0946-001-060	Label, Stryker	2
BK	0830-090-001	Label, rear	1
BL	0830-091-009	Euro label, front	1
BR	0830-091-010	Euro label, stop	1

Round seat/base assembly

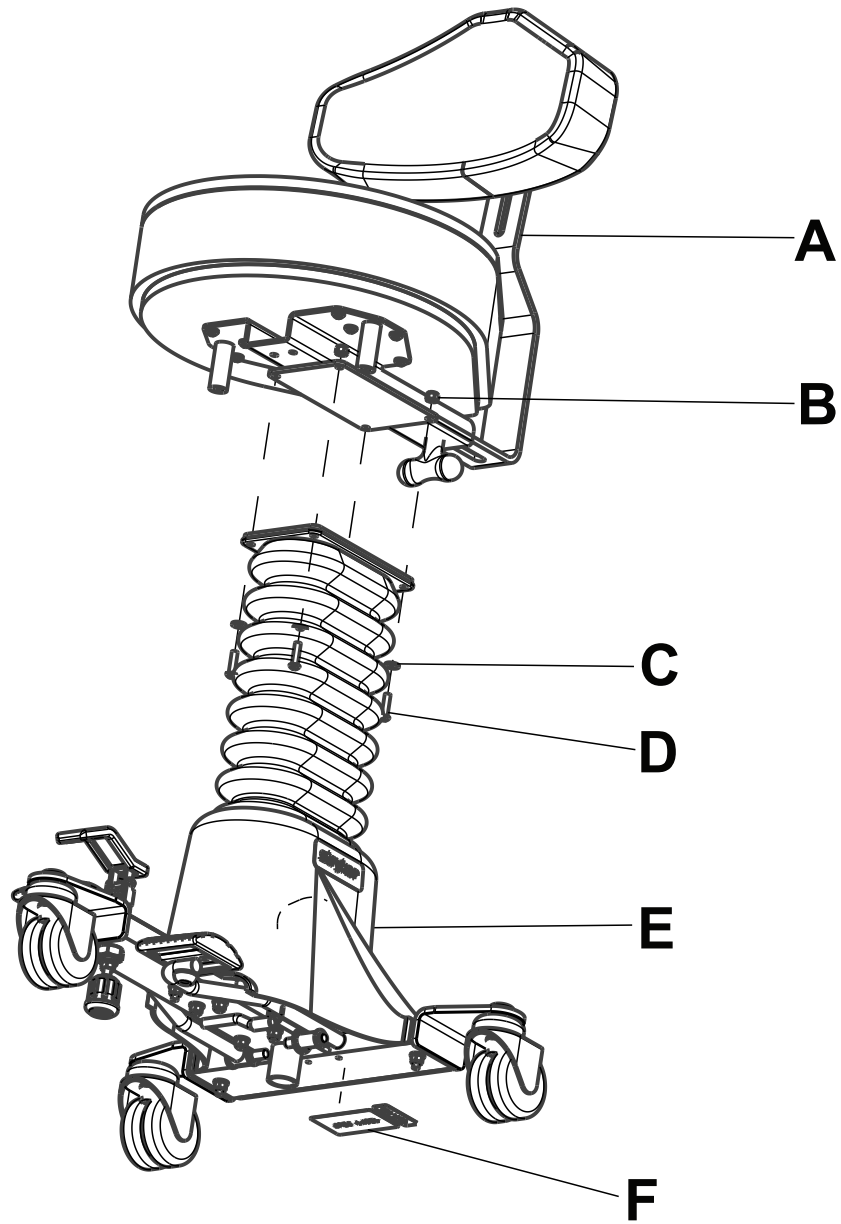
0830-020-101 Rev AB (Reference only)



Item	Number	Name	Quantity
A	0830-020-100	Round seat bracket assembly	1
B	0016-028-000	Fiberlock hex nut	4
C	0011-063-000	Flat washer	4
D	0004-193-000	Hex socket button head cap screw	4
E	0830-010-100	Hydraulic base assembly	1
F	0830-090-004	Label, spec	1

Round seat/base assembly, Euro

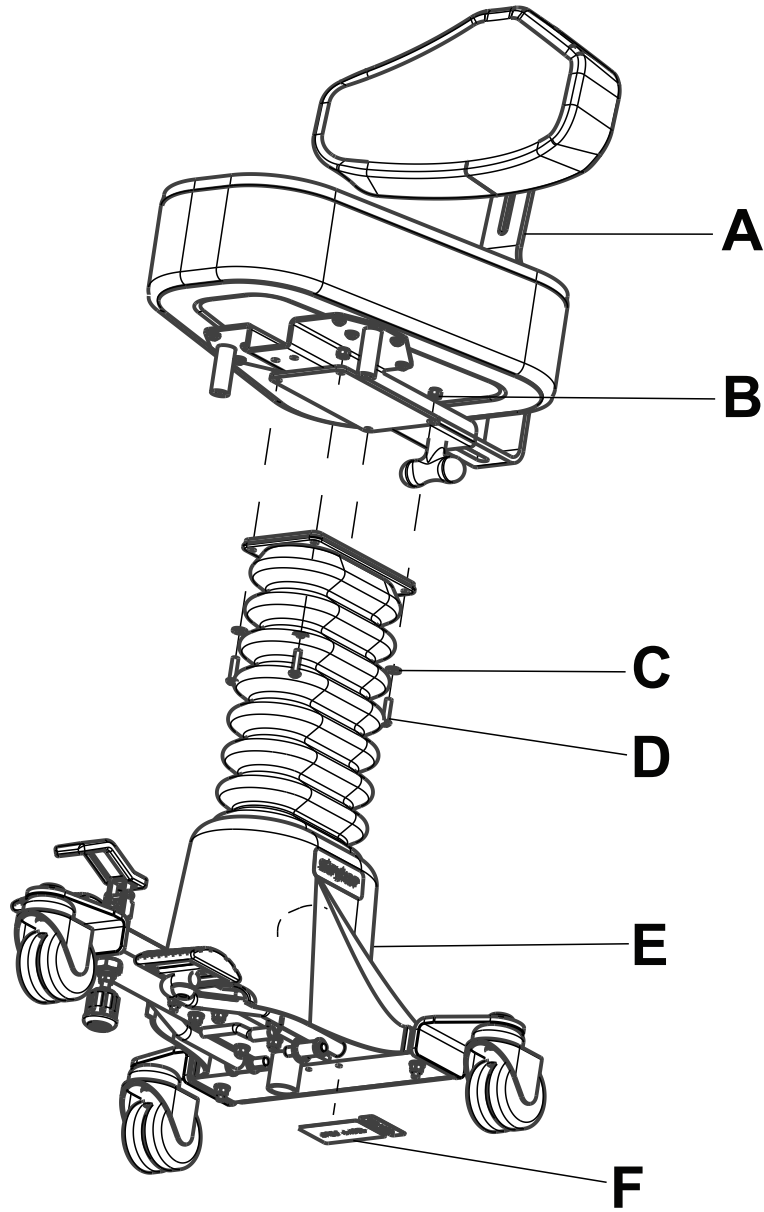
0830-291-101 Rev AB (Reference only)



Item	Number	Name	Quantity
A	0830-091-100	Round seat bracket assembly, Euro	1
B	0016-028-000	Fiberlock hex nut	4
C	0011-063-000	Flat washer	4
D	0004-193-000	Hex socket button head cap screw	4
E	0830-191-100	Hhydraulic base assembly, Euro	1
F	0830-090-004	Label, spec	1

Obround seat/base assembly

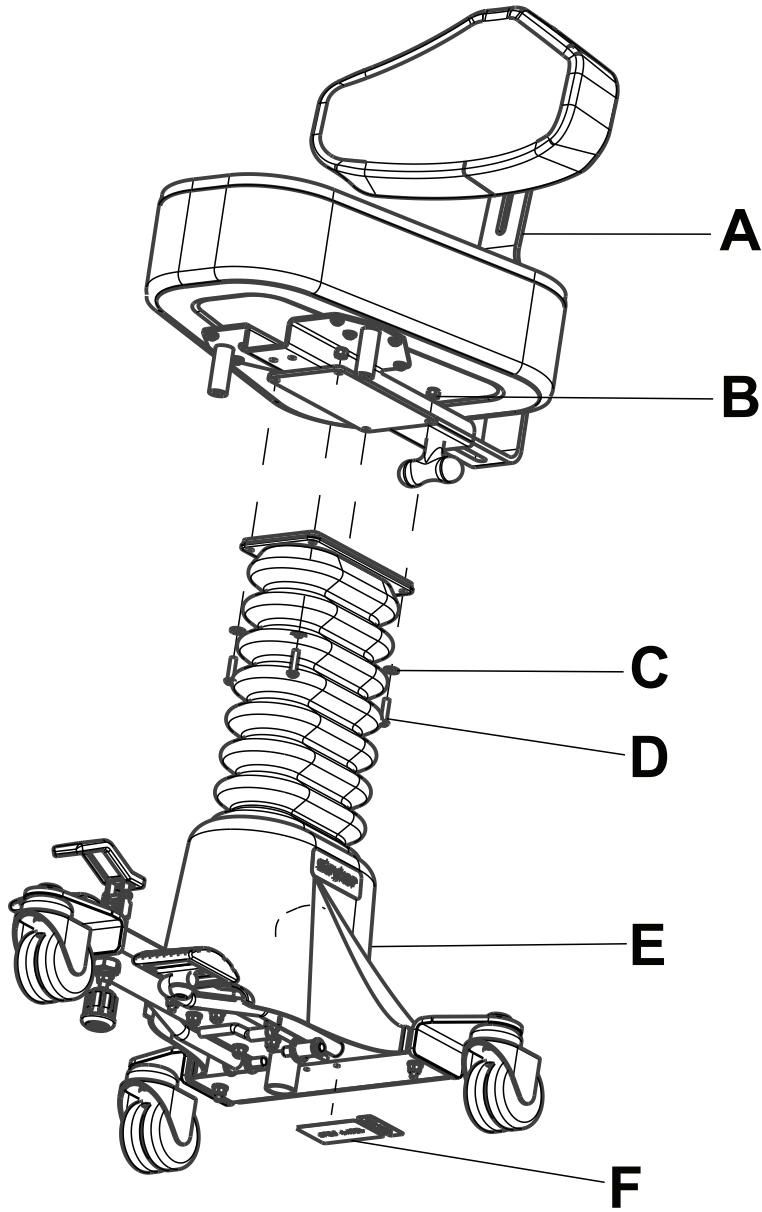
0830-030-101 Rev AB (Reference only)



Item	Number	Name	Quantity
A	0830-030-100	Obround seat bracket assembly	1
B	0016-028-000	Fiberlock hex nut	4
C	0011-063-000	Flat washer	4
D	0004-193-000	Hex socket button head cap screw	4
E	0830-010-100	Hydraulic base assembly	1
F	0830-090-004	Label, spec	1

Obround seat/base assembly, Euro

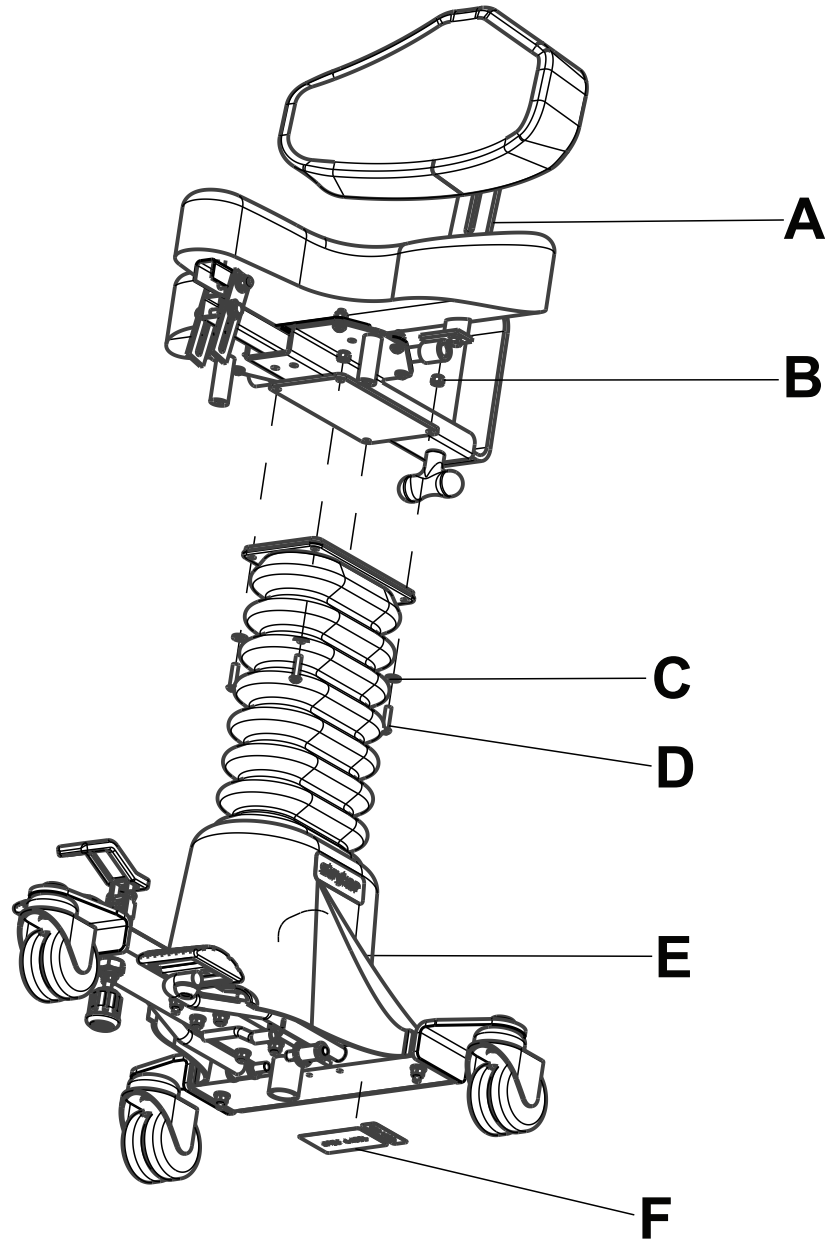
0830-391-101 Rev AB (Reference only)



Item	Number	Name	Quantity
A	0830-091-110	Obround seat bracket assembly, Euro	1
B	0016-028-000	Fiberlock hex nut	4
C	0011-063-000	Flat washer	4
D	0004-193-000	Hex socket button head cap screw	4
E	0830-191-100	Hydraulic base assembly, Euro	1
F	0830-090-004	Label, spec	1

Motorcycle seat/base assembly

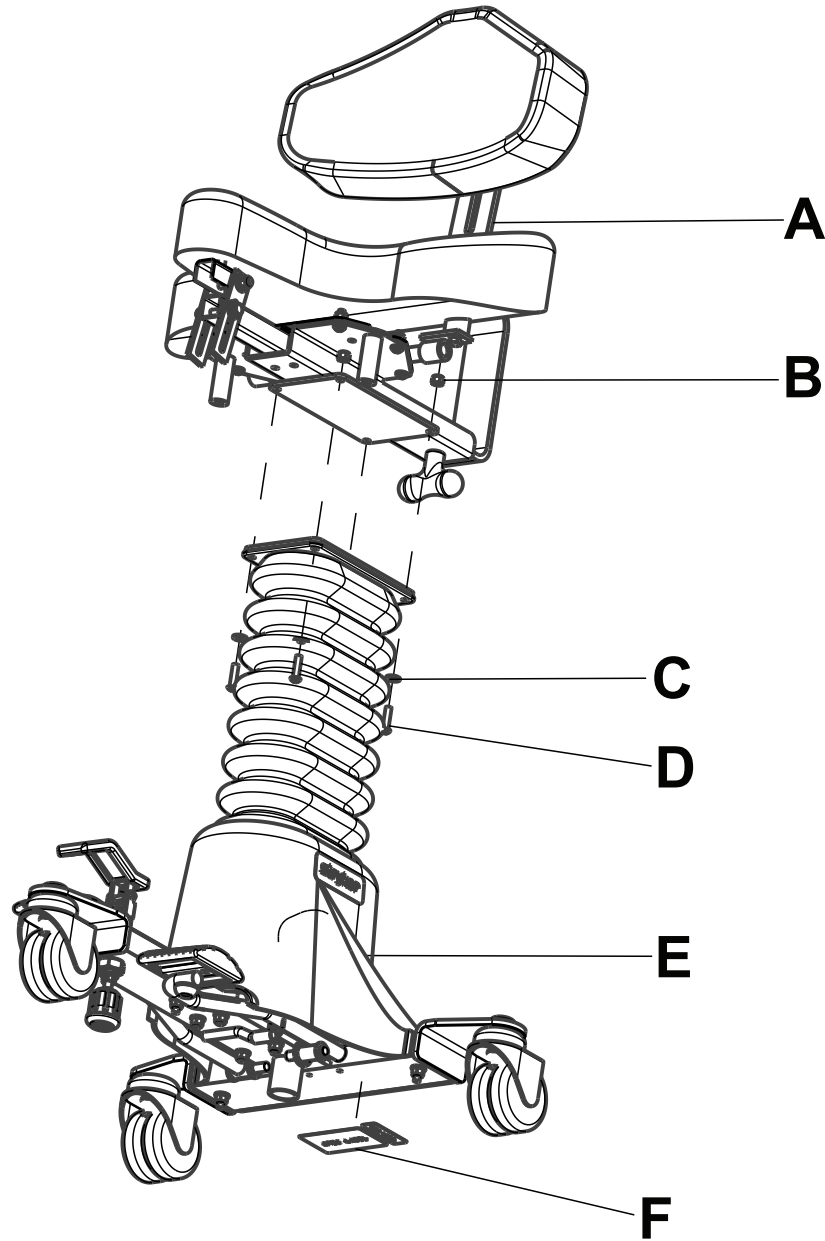
0830-201-020 Rev AB (Reference only)



Item	Number	Name	Quantity
A	0830-201-100	Motorcycle seat bracket assembly	1
B	0016-028-000	Fiberlock hex nut	4
C	0011-063-000	Flat washer	4
D	0004-193-000	Hex socket button head cap screw	4
E	0830-010-100	Hydraulic base assembly	1
F	0830-090-004	Label, spec	1

Motorcycle seat/base assembly, Euro

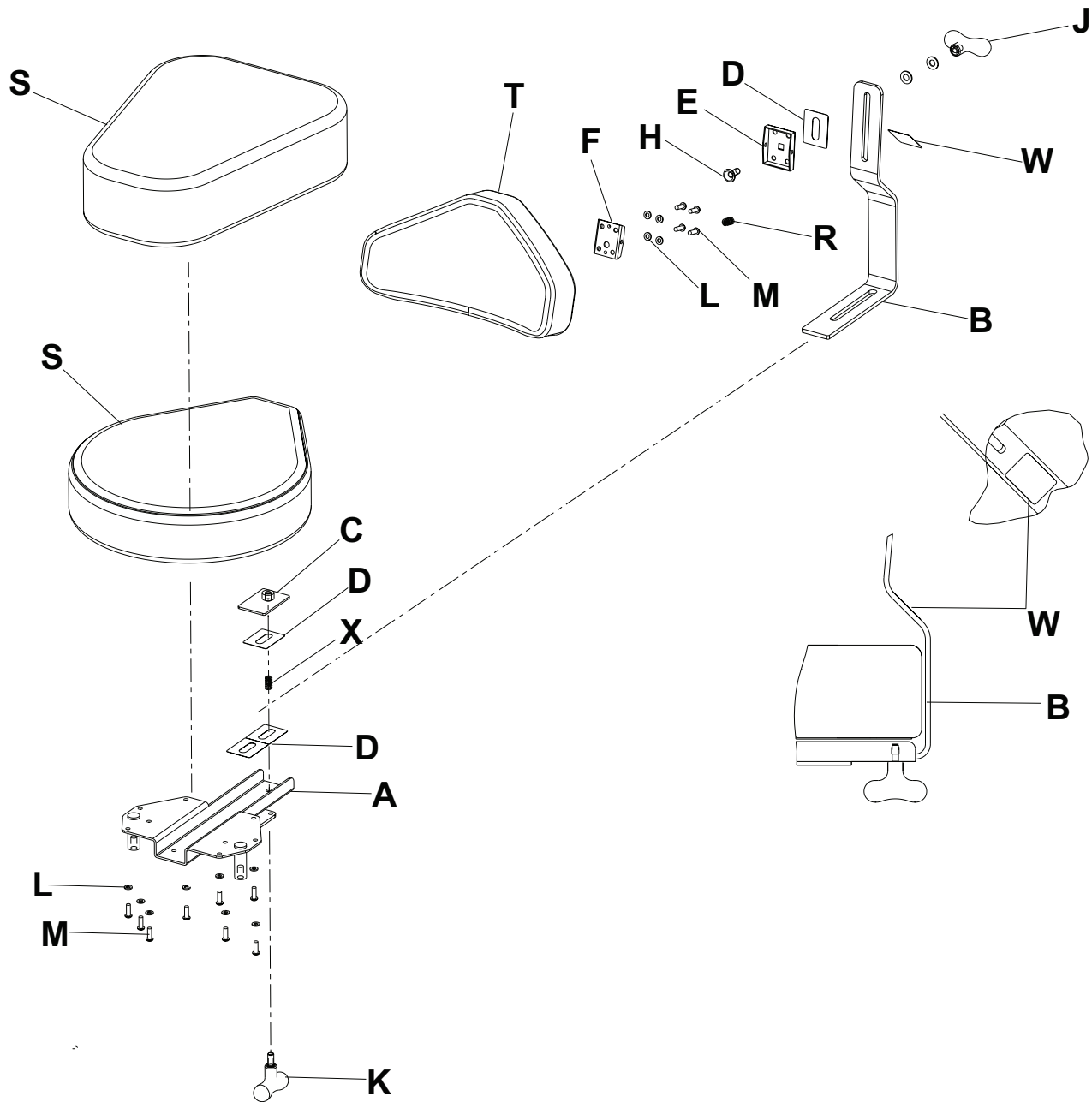
0830-291-020 Rev AB (Reference only)



Item	Number	Name	Quantity
A	0830-291-010	Motorcycle seat bracket assembly, Euro	1
B	0016-028-000	Fiberlock hex nut	4
C	0011-063-000	Flat washer	4
D	0004-193-000	Hex socket button head cap screw	4
E	0830-191-100	Hydraulic base assembly, Euro	1
F	0830-090-004	Label, spec	1

Round/obround seat bracket assembly - 0830-020-100/0830-030-100/ 0830-091-100/0830-091-110

0830-020-111 Rev A (Reference only)



Seat bracket assembly, round - 0830-020-100

Item	Number	Name	Quantity
A	0830-020-030	Seat bracket weldment	1
B	0830-020-034	Backrest support bar	1
C	0830-020-035	Clamp weldment	1
D	0830-020-038	Wear strip	4
E	0830-020-028	Hinge, female	1
F	0830-020-026	Hinge and pin, male	1
H	0830-020-027	Flat head carriage bolt, 1 in.	1

Item	Number	Name	Quantity
J	0024-045-000	T-handle, female	1
K	0024-044-000	T-handle, male	1
L	0012-012-000	Lock washer	12
M	0004-161-000	Button head cap screw	12
N	0014-020-000	Flat washer, nylon	1
P	0011-004-000	Flat washer	1
R	0830-020-025	Hinge spring	1
S	0830-020-010	Seat assembly, teardrop	1
T	0830-020-020	Backrest assembly	1
W	0830-091-003	Label, Euro lock/unlock	1
X	0038-278-000	Compression spring	1

Seat bracket assembly, obround - 0830-030-100

Item	Number	Name	Quantity
A	0830-020-030	Seat bracket weldment	1
B	0830-020-034	Backrest support bar	1
C	0830-020-035	Clamp weldment	1
D	0830-020-038	Wear strip	4
E	0830-020-028	Hinge, female	1
F	0830-020-026	Hinge and pin, male	1
H	0830-020-027	Flat head carriage bolt, 1 in.	1
J	0024-045-000	T-handle, female	1
K	0024-044-000	T-handle, male	1
L	0012-012-000	Lock washer	12
M	0004-161-000	Button head cap screw	12
N	0014-020-000	Flat washer, nylon	1
P	0011-004-000	Flat washer	1
R	0830-020-025	Hinge spring	1
S	0830-030-010	Seat assembly, obround	1
T	0830-020-020	Backrest assembly	1
W	0830-091-003	Label, Euro lock/unlock	1
X	0038-278-000	Compression spring	1

Seat bracket assembly, round, Euro - 0830-091-100

Item	Number	Name	Quantity
A	0830-020-030	Seat bracket weldment	1
B	0830-020-034	Backrest support bar	1
C	0830-020-035	Clamp weldment	1
D	0830-020-038	Wear strip	4
E	0830-020-028	Hinge, female	1
F	0830-020-026	Hinge and pin, male	1
H	0830-020-027	Flat head carriage bolt, 1 in.	1
J	0024-045-000	T-handle, female	1
K	0024-044-000	T-handle, male	1
L	0012-012-000	Lock washer	12
M	0004-161-000	Button head cap screw	12
N	0014-020-000	Flat washer, nylon	1
P	0011-004-000	Flat washer	1

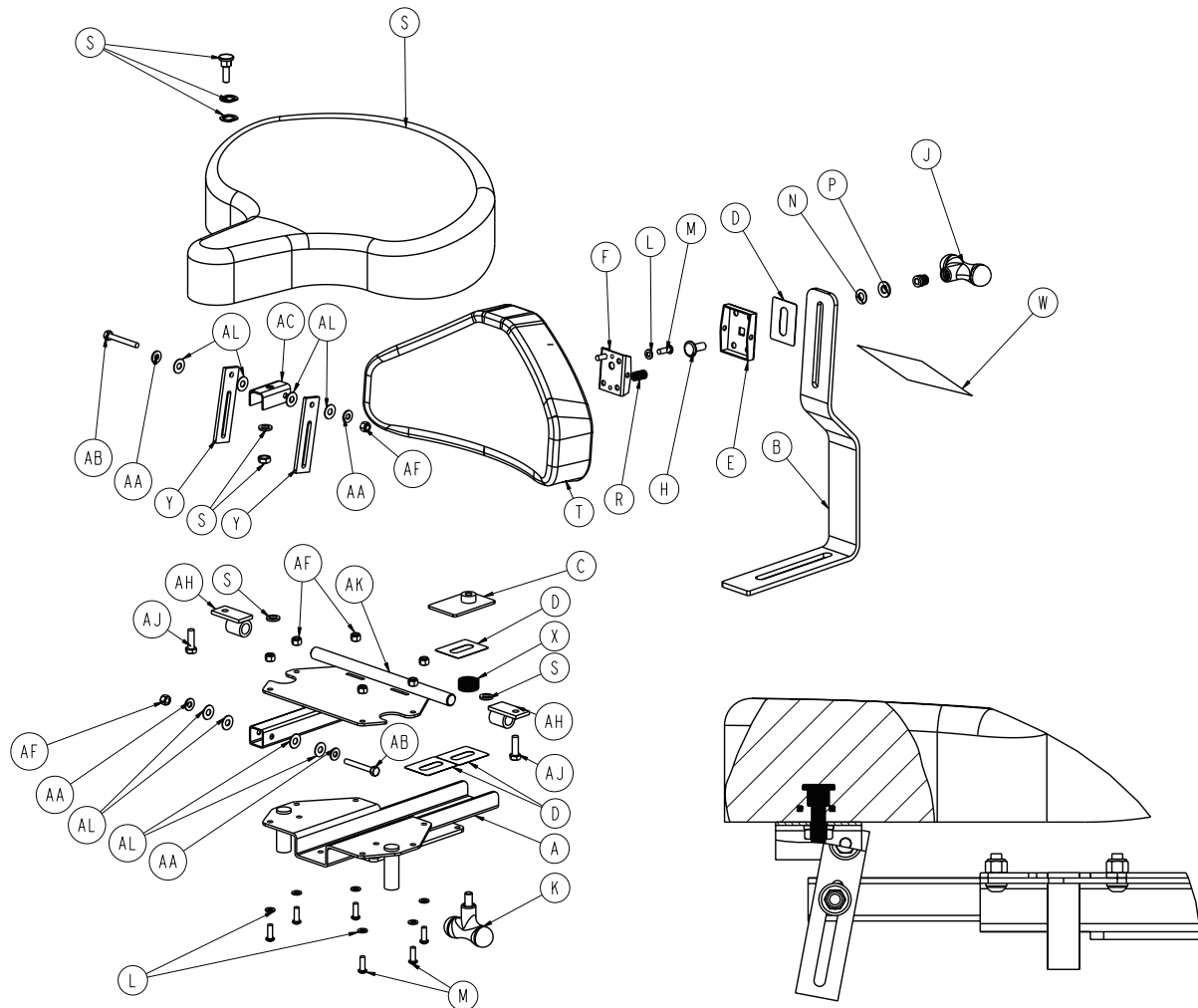
Item	Number	Name	Quantity
R	0830-020-025	Hinge spring	1
S	0830-020-010	Seat assembly, round	1
T	0830-020-020	Backrest assembly	1
W	0830-091-003	Label, Euro lock/unlock	1
X	0038-278-000	Compression spring	1

Seat bracket assembly, obround, Euro - 0830-091-110

Item	Number	Name	Quantity
A	0830-020-030	Seat bracket weldment	1
B	0830-020-034	Backrest support bar	1
C	0830-020-035	Clamp weldment	1
D	0830-020-038	Wear strip	4
E	0830-020-028	Hinge, female	1
F	0830-020-026	Hinge and pin, male	1
H	0830-020-027	Flat head carriage bolt, 1 in.	1
J	0024-045-000	T-handle, female	1
K	0024-044-000	T-handle, male	1
L	0012-012-000	Lock washer	12
M	0004-161-000	Button head cap screw	12
N	0014-020-000	Flat washer, nylon	1
P	0011-004-000	Flat washer	1
R	0830-020-025	Hinge spring	1
S	0830-030-010	Seat assembly, obround	1
T	0830-020-020	Backrest assembly	1
W	0830-091-003	Label, Euro lock/unlock	1
X	0038-278-000	Compression spring	1

Motorcycle seat bracket assembly, 0830-201-100/0830-291-010

0830-201-101 Rev B (Reference only)



Motorcycle seat bracket assembly - 0830-201-100

Item	Number	Name	Quantity
A	0830-020-030	Seat bracket weldment	1
B	0830-020-034	Backrest support bar	1
C	0830-020-035	Clamp weldment	1
D	0830-020-038	Wear strip	4
E	0830-020-028	Female hinge	1
F	0830-020-026	Male hinge and pin	1
H	0830-020-027	Flat head carriage bolt, 1 in.	1
J	0024-045-000	T-handle, female	1
K	0024-044-000	T-handle, male	1
L	0012-012-000	Lock washer	10
M	0004-161-000	Button head cap screw	10
N	0014-020-000	Flat washer, nylon	1
P	0011-004-000	Flat washer	1
R	0830-020-025	Hinge spring	1
S	0763-201-029	Hardware, seat and mounting	1
T	0830-020-020	Backrest assembly	1

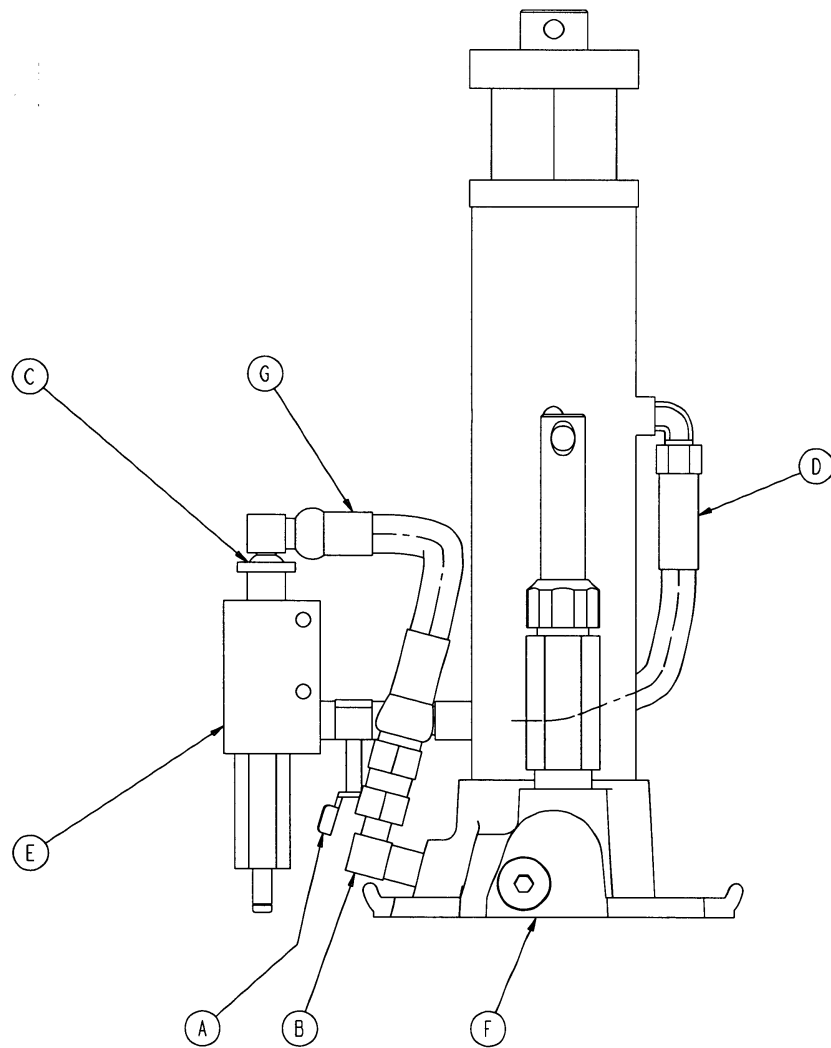
Item	Number	Name	Quantity
W	0830-091-003	Label, Euro lock/unlock	1
X	0038-278-000	Compression spring	1
Y	0763-201-027	Adjustment plate	2
AA	0011-002-000	Flat washer	4
AB	0003-076-000	Hex head cap screw	2
AC	0763-201-028	U-bracket	1
AF	0016-028-000	Fiberlock hex nut	8
AH	0763-201-024	Pivot assembly	2
AJ	0003-049-000	Hex head cap screw	2
AK	0830-021-012	Motorcycle seat adaptor weldment	1
AL	0011-179-000	Washer	8

Motorcycle seat bracket assembly, Euro - 0830-291-010

Item	Number	Name	Quantity
A	0830-020-030	Seat bracket weldment	1
B	0830-020-034	Backrest support bar	1
C	0830-020-035	Clamp weldment	1
D	0830-020-038	Wear strip	4
E	0830-020-028	Female hinge	1
F	0830-020-026	Male hinge and pin	1
H	0830-020-027	Flat head carriage bolt, 1 in.	1
J	0024-045-000	T-handle, female	1
K	0024-044-000	T-handle, male	1
L	0012-012-000	Lock washer	10
M	0004-161-000	Button head cap screw	10
N	0014-020-000	Flat washer, nylon	1
P	0011-004-000	Flat washer	1
R	0830-020-025	Hinge spring	1
S	0763-201-029	Hardware, seat and mounting	1
T	0830-020-020	Backrest assembly	1
W	0830-091-003	Label, Euro lock/unlock	1
X	0038-278-000	Compression spring	1
Y	0763-201-027	Adjustment plate	2
AA	0011-002-000	Flat washer	4
AB	0003-076-000	Hex head cap screw	2
AC	0763-201-028	U-bracket	1
AF	0016-028-000	Fiberlock hex nut	8
AH	0763-201-024	Pivot assembly	2
AJ	0003-049-000	Hex head cap screw	2
AK	0830-021-012	Motorcycle seat adaptor weldment	1
AL	0011-179-000	Washer	8

Jack and control assembly - 0830-010-070

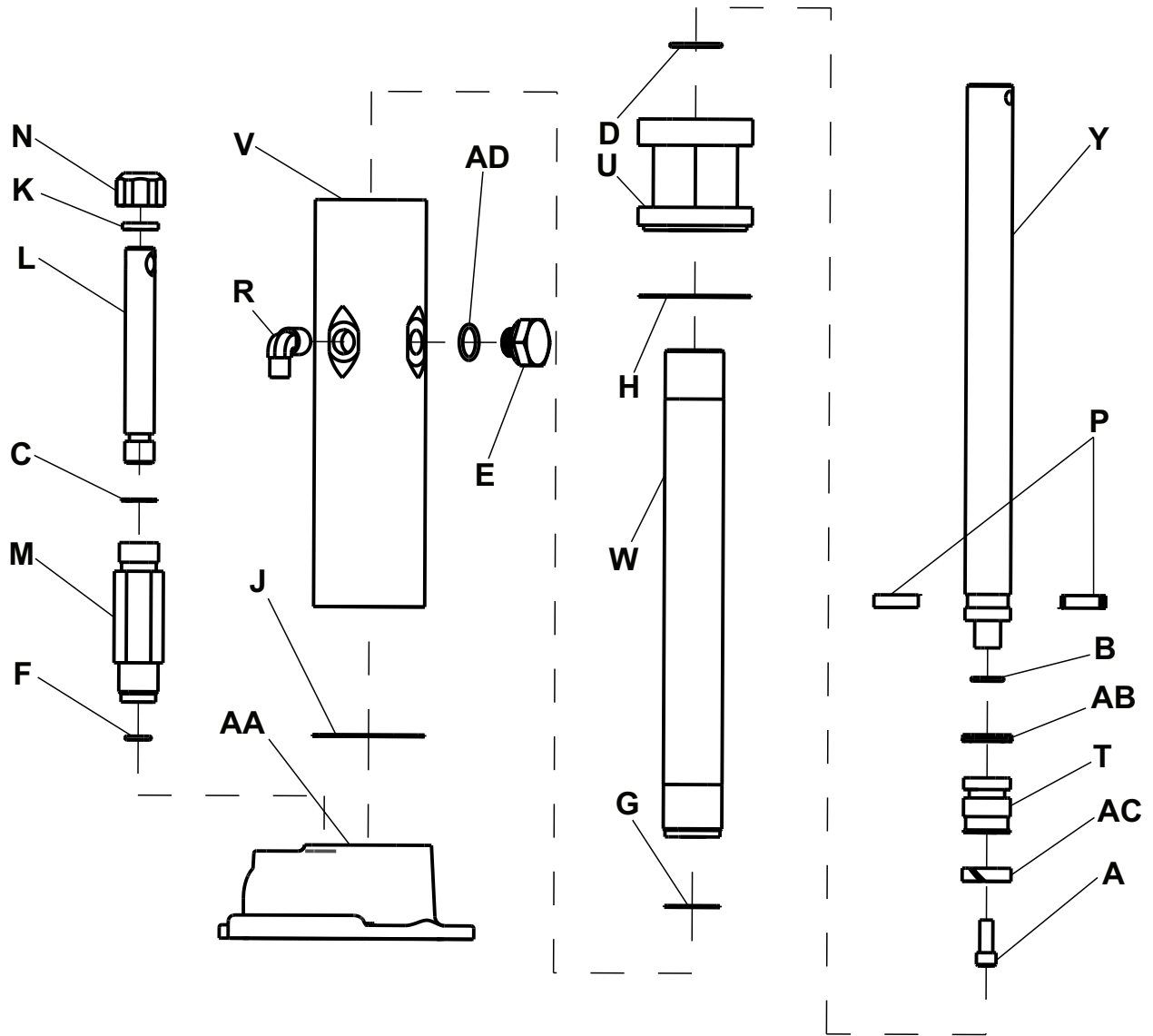
Rev C (Reference only)

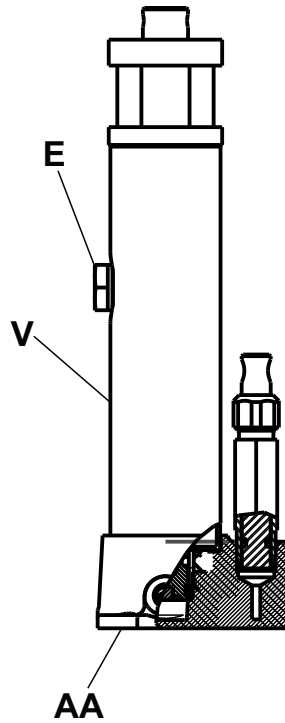


Item	Number	Name	Quantity
A	0048-013-000	Needle valve	1
B	0048-146-000	90° elbow valve	1
C	0390-002-147	L fitting	1
D	0763-020-023	Return line	1
E	0763-020-032	Manifold assembly	1
F	0830-010-060	Jack assembly	1
G	0830-010-071	Pressure line	1

Jack assembly

0830-010-060 Rev C (Reference only)

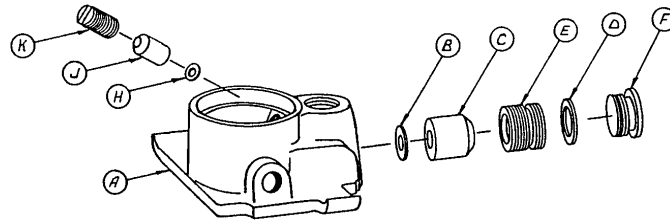




Item	Number	Name	Quantity
A	0004-014-000	Socket head cap screw	1
B	0045-014-000	O-ring	1
C	0045-110-000	O-ring	1
D	0045-904-000	Quad-X seal	1
E	0388-100-039	Plug	1
F	0390-001-237	Gasket, pump	1
G	0390-001-238	Gasket, actuator	1
H	0390-001-243	Gasket	1
J	0390-001-244	Base gasket	1
K	0390-002-128	Packing	1
L	0390-002-135	Pump piston	1
M	0390-002-136	Pump cylinder	1
N	0390-002-137	Pump cap	1
P	0390-002-139	Retaining collar	2
R	0390-002-147	Elbow, male	1
T	0715-001-331	Piston end	1
U	0715-001-340	Jack cap assembly	1
V	0830-010-061	Reservoir	1
W	0830-010-062	Actuator cylinder	1
Y	0830-010-063	Actuator	1
AA	0926-001-295	Jack base assembly	1
AB	0926-020-161	Parker packing	1
AC	0926-020-162	Wear ring	1
AD	0045-015-001	O-ring	1

Jack base assembly

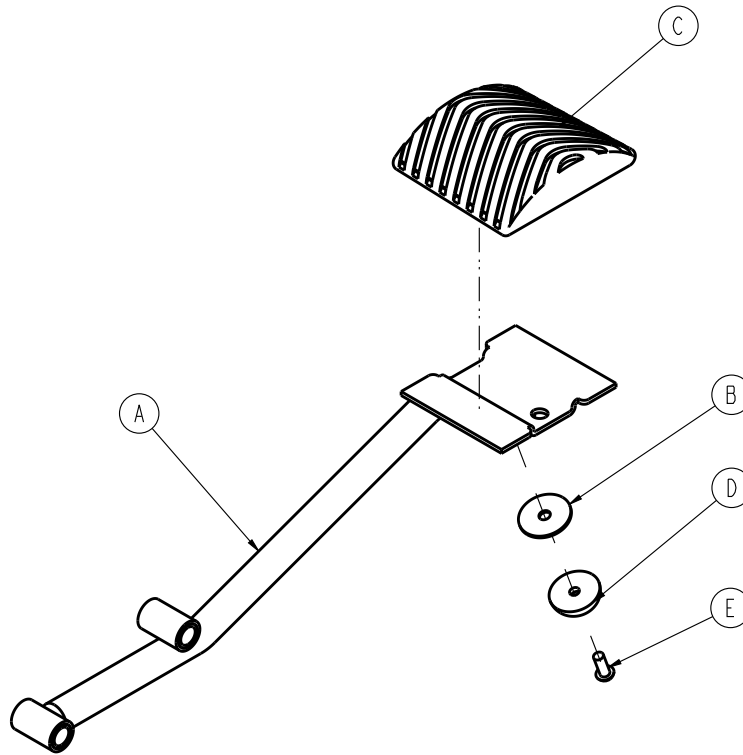
0926-001-295 Rev A (Reference only)



Item	Name	Number	Quantity
A	0946-001-291	Jack base	1
B	0926-020-154	Seal	1
C	0926-020-153	Check valve	1
D	0926-020-156	Seal	1
E	0926-020-159	Valve plug	1
F	0926-020-157	Base plug	1
H	0926-020-155	Seal	1
J	0926-020-152	Check valve	1
K	0926-020-158	Reservoir plug	1

Pump pedal assembly - 0830-010-030

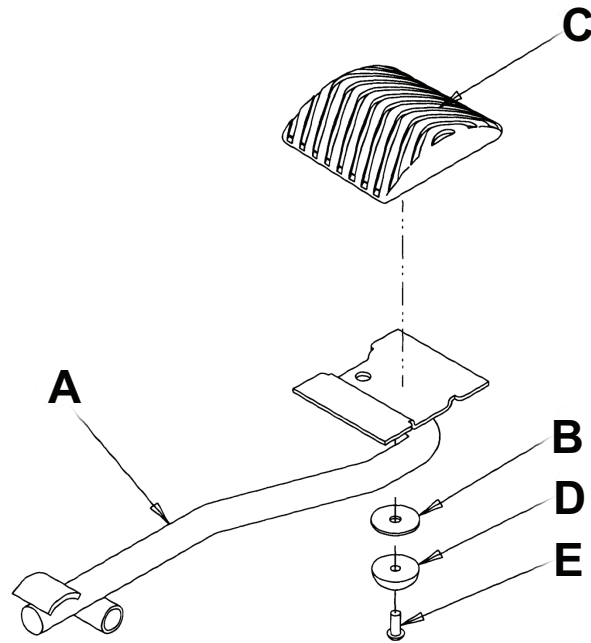
Rev B (Reference only)



Item	Number	Name	Quantity
A	0830-010-031	Pump pedal weldment	1
B	0011-271-000	Washer	1
C	0715-001-126	Side control pedal pad	1
D	0946-001-155	Bumper	1
E	0002-018-000	Round head machine screw	1

Release pedal assembly - 0830-010-020

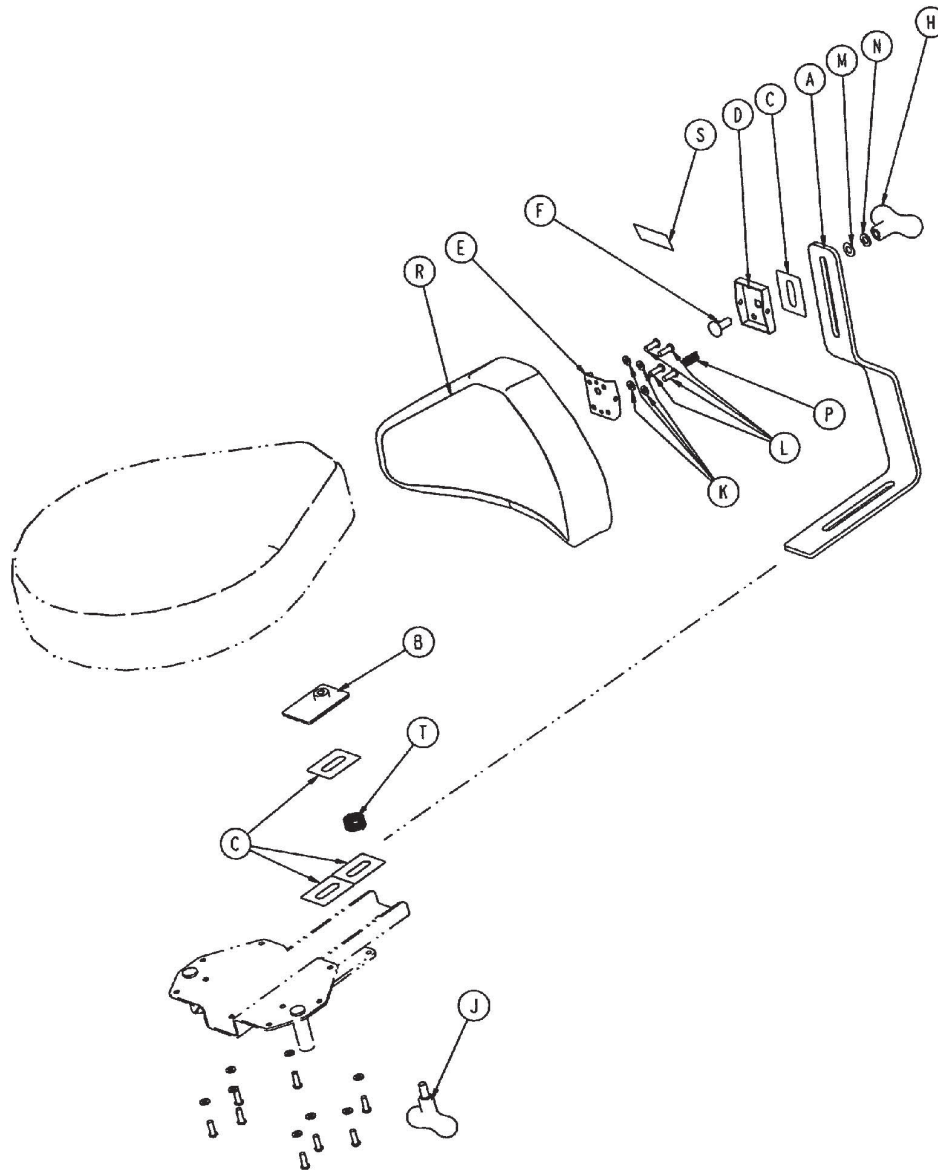
Rev B (Reference only)



Item	Number	Name	Quantity
A	0830-010-021	Release pedal assembly	1
B	0011-271-000	Washer	1
C	0715-001-126	Side control pedal pad	1
D	0946-001-155	Bumper	1
E	0002-018-000	Round head machine screw	1

Backrest assembly option - 0830-700-001

Rev A (Reference only)

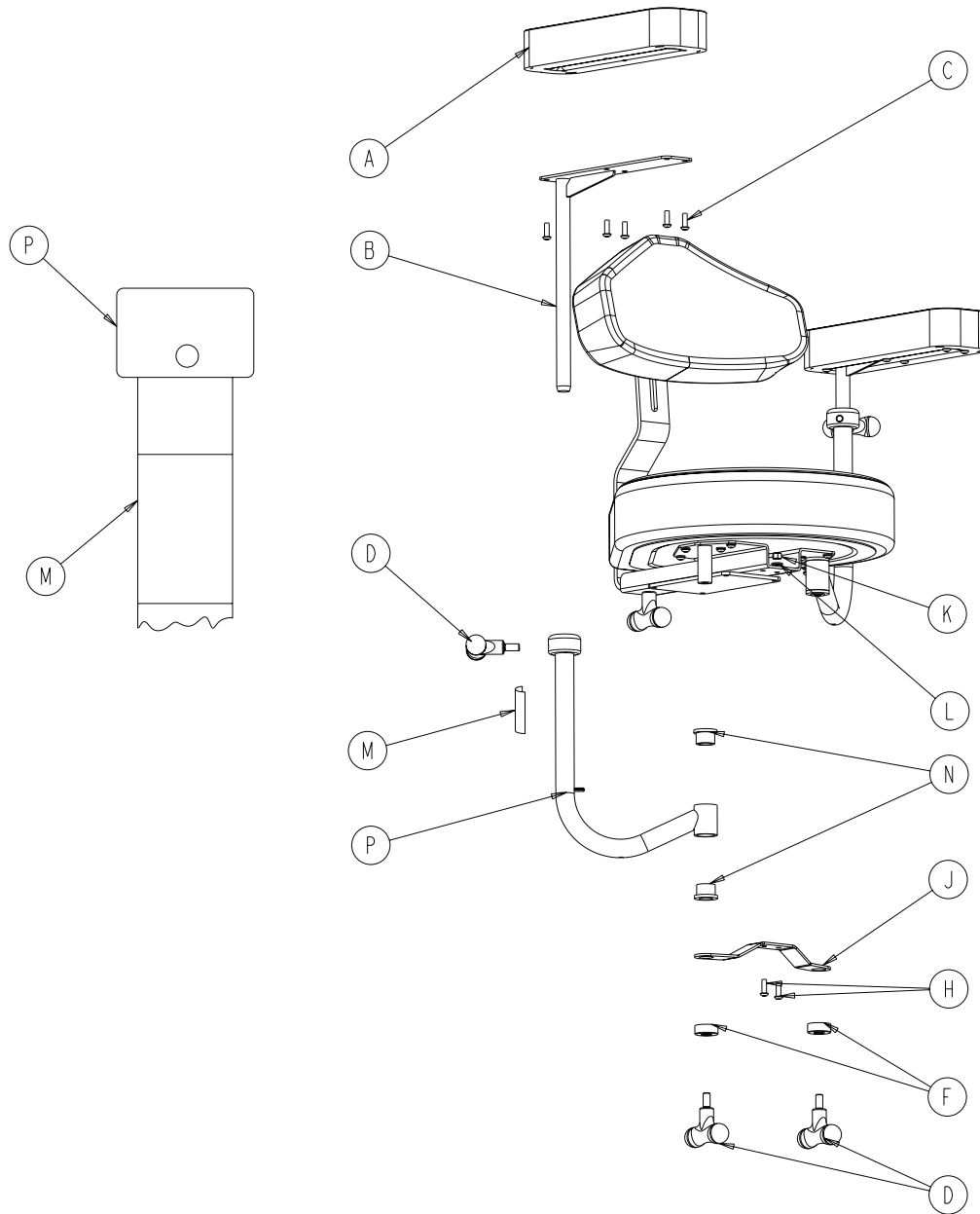


Item	Number	Name	Quantity
A	0830-020-034	Backrest support bar	1
B	0830-020-035	Clamp weldment	1
C	0830-020-038	Wear strip	4
D	0830-020-028	Female hinge	1
E	0830-020-026	Male hinge and pin	1
F	0830-020-027	Flat head carriage bolt, 1 in	1
H	0024-045-000	T-handle, female	1
J	0024-044-000	T-handle, male	1
K	0012-012-000	Lock washer	12
L	0004-161-000	Button head cap screw	12
M	0014-020-000	Nylon washer	1
N	0011-054-000	Flat washer	1
P	0830-020-025	Hinge spring	1

Item	Number	Name	Quantity
R	0830-020-020	Backrest assembly	1
S	0830-091-003	Label, Euro lock/unlock	1
T	0038-278-000	Compression spring	1

Wrist rest assembly option - 0830-040-101/0830-291-100 (Euro)

Rev A (Reference only)



Wrist rest assembly - 0830-040-100

Item	Number	Name	Quantity
A	0830-040-030	Wrist rest pad assembly	2
B	0830-040-010	Wrist rest weldment	2
C	0004-193-000	Hex socket button head cap screw	12
D	0024-044-000	T-handle, male	4
F	0830-040-027	PD clamp bushing	2
H	0004-161-000	Button head cap screw	2
J	0830-040-024	Clamping bracket	1
K	0016-028-000	Nylock nut	2
L	0011-063-000	Flat washer	2

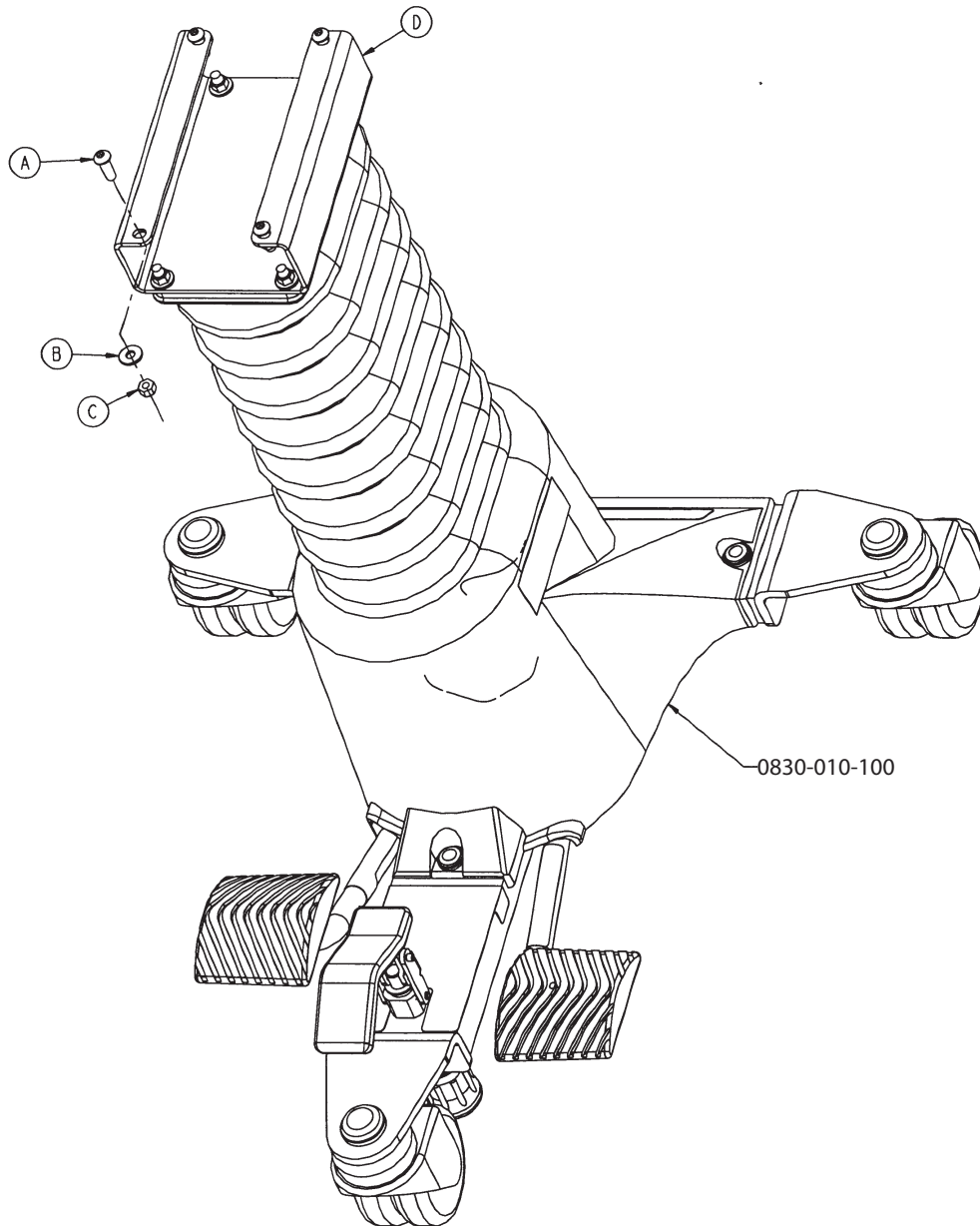
Item	Number	Name	Quantity
M	0830-091-003	Label, rotation	2
N	0081-230-000	Flange bearing	4
P	0830-040-020	Wrist rest support weldment	2

Wrist rest assembly, Euro - 0830-291-100

Item	Number	Name	Quantity
A	0830-040-030	Wrist rest pad assembly	2
B	0830-040-010	Wrist rest weldment	2
C	0004-193-000	Hex socket button head cap screw	12
D	0024-044-000	T-handle, male	4
F	0830-040-027	PD clamp bushing	2
H	0004-161-000	Button head cap screw	2
J	0830-040-024	Clamping bracket	1
K	0016-028-000	Nylock nut	2
L	0011-063-000	Flat washer	2
M	0830-091-003	Label, Euro lock/unlock	2
N	0081-230-000	Flange bearing	4
P	0830-040-020	Wrist rest support weldment	2

2" seat riser assembly option - 0830-201-028

Rev - (Reference only)



Item	Number	Name	Quantity
A	0004-161-000	Button head cap screw	4
B	0011-063-000	Flat washer	4
C	0016-028-000	Nylock nut	4
D	0830-021-013	Seat riser	1

stryker



Stryker Medical
3800 E. Centre Avenue
Portage, MI 49002
USA