



PMA DESIGN AND MANUFACTURING

-----A Division of Team JAS-----

Ph: (904) 292-2328

FX: (904) 292-2329

Website: www.teamjas.com


8493 Baymeadows Way, Jacksonville, FL 32256

Document No.	PDM-ICA110
Title	PRINCIPAL INSTRUCTIONS FOR CONTINUED AIRWORTHINESS STC SA612NE: INSTALLATION OF AIRSTAIR DOOR
Revision	B
Date	8 December 2020

The operator of any of these components is required by the FAA to file this document in their Aircraft Maintenance and Component Overhaul Manuals as well as in their Aircraft Maintenance and Inspection Program.

This Document Contains Proprietary Information

Any reproduction, use or disclosure of this document or information contained within is expressly prohibited except as **PMA Design and Manufacturing** may otherwise agree in writing.

 PMA DESIGN AND MANUFACTURING <small>-----A Division of Team JAS-----</small> <small>Ph: (904) 292-2328</small> <small>Fx: (904) 292-2329</small> <small>Website: www.teamjas.com</small> <small>8493 Baymeadows Way, Jacksonville, FL 32256</small>	DOCUMENT NO: PDM-ICA110	REVISION: B	DATE: 8 Dec 2020	Page 2 of 40
	PRINCIPAL INSTRUCTIONS FOR CONTINUED AIRWORTHINESS FOR STC SA612NE			

Record of Revisions

<u>Rev</u>	<u>Rev Date</u>	<u>Description of Change</u>	<u>Prepared By</u>
-	10 Dec 2019	Initial Release	R. Rillstone
A	7 Jan 2020	Removal of -400 documentation reference.	R. Rillstone
B	8 Dec 2020	Updated to include new hinge half, updated parts list, updated installation steps, and additional figures.	D. McClane



**PMA DESIGN AND
MANUFACTURING**
-----A Division of Team JAS-----
Ph: (904) 292-2328
Fk: (904) 292-2329
Website: www.teamjas.com
8493 Baymeadows Way, Jacksonville, FL 32256

DOCUMENT NO:
PDM-ICA110

REVISION:
B

DATE:
8 Dec 2020

Page
3 of 40

**PRINCIPAL INSTRUCTIONS FOR CONTINUED
AIRWORTHINESS FOR STC SA612NE**

List of Effective Pages

Page:	1	2	3	4	5	6	7	8	9	10	11	12	13	14
Revision:	B	B	B	-	B	-	-	-	B	B	A	-	-	-

Page:	15	16	17	18	19	20	21	22	23	24	25	26	27	28
Revision:	-	-	-	-	-	-	-	-	-	-	-	B	B	-

Page:	29	30	31	32	33	34	35	36	37	38	39	40		
Revision:	B	-	B	-	-	-	-	B	B	B	B	B		

**PRINCIPAL INSTRUCTIONS FOR CONTINUED
AIRWORTHINESS FOR STC SA612NE**

Table of Contents

Record of Revisions.....	2
1.0 Introduction.....	6
Purpose	6
System Description.....	7
2.0 Maintenance Instructions.....	8
Tools Required.....	8
Servicing and Inspection Requirements	8
Figure 1.0 – Airstair Door Installation.....	9
Door Installation.....	10
Door Removal.....	10
3.0 Additional Instructions.....	11
Electrical Systems.....	11
Primary and Secondary Structures.....	11
Weight & Balance	11
4.0 Airworthiness Limitations	12
5.0 Illustrated Part List	13
B60902 Airstair Door Assembly	14
Figure 2.0 - B60902 Airstair Door Assembly	14
Figure 3.0 – Internal Latching Mechanism.....	15
Figure 4.0 – Inner and Outer Handle and Guard Assemblies.....	17
Figure 5.0 – Interior Components	19
Figure 6.0 – Post Assembly (AFT)	21
Figure 7.0 – Extension Step Installation (optional).....	23
B70902 Airstair Door Assembly	25
Figure 8.0 – B70902 Airstair Door Assembly	25
Figure 9.0 - Locking Mechanism Installation	26
Figure 9.1 – Contact Assembly and Guide Block Installation.....	28
Figure 9.2 - Handle Assembly Installations	30



 PMA DESIGN AND MANUFACTURING <small>-----A Division of Team JAS-----</small> <small>Ph: (904) 292-2328</small> <small>Fx: (904) 292-2329</small> <small>Website: www.teamjas.com</small> <small>8493 Baymeadows Way, Jacksonville, FL 32256</small>	DOCUMENT NO: PDM-ICA110	REVISION: B	DATE: 8 Dec 2020	Page 5 of 40
	PRINCIPAL INSTRUCTIONS FOR CONTINUED AIRWORTHINESS FOR STC SA612NE			

Figure 10.0 – Interior Components.....32

Figure 10.1 - Handle Guard Assembly35

Figure 11.0 – Hinge-Half Installation 37

Figure 12.0 – Fuselage Hinge-Half Installation 39

 PMA DESIGN AND MANUFACTURING <small>-----A Division of Team JAS-----</small> <small>Ph: (904) 292-2328</small> <small>Fx: (904) 292-2329</small> <small>Website: www.teamjas.com</small> <small>8493 Baymeadows Way, Jacksonville, FL 32256</small>	DOCUMENT NO: PDM-ICA110	REVISION: B	DATE: 8 Dec 2020	Page 6 of 40
	PRINCIPAL INSTRUCTIONS FOR CONTINUED AIRWORTHINESS FOR STC SA612NE			


1.0 Introduction

Purpose

The following data is prepared, issued and revised by PMA Design & Manufacturing for the exclusive use of its customers and is intended for use in provisioning, requisitioning, and issuing replaceable door parts and units and in identifying parts. The contents are proprietary to PDM and its customers and are subject to change. The use of any part of this document by any other person or persons or for other purpose without the prior written consent of PDM is expressly prohibited.

Besides the manufacturing method of sub-components, this door only differs from previous configurations: C6FS3626-1/-3/-5 and B60902 by omitting the extension step. Therefore, the Instructions for Continued Airworthiness (ICA) have not changed except for omitting this check during inspection intervals and the operator is still directed to the OEM ICA for maintenance instructions. Those Instructions for Continued Airworthiness which are not explicitly defined herein, and those applicable manuals will be cross referenced throughout the following sections as necessary.


This ICA is a living document and will be amended and updated as necessary. It is written as completely as possible and will be distributed to the operators as part of the customer data package (i.e., it will be included with each door delivered). Revisions and further distribution of changes will be served to those known operators upon completion. In cases product ownership transfers, it is required that you, the operator, request the latest revision of the manual before performing any overhaul or maintenance operations.

 PMA DESIGN AND MANUFACTURING <small>-----A Division of Team JAS-----</small> <small>Ph: (904) 292-2328</small> <small>Fx: (904) 292-2329</small> <small>Website: www.teamjas.com</small> <small>8493 Baymeadows Way, Jacksonville, FL 32256</small>	DOCUMENT NO: PDM-ICA110	REVISION: B	DATE: 8 Dec 2020	Page 7 of 40
	PRINCIPAL INSTRUCTIONS FOR CONTINUED AIRWORTHINESS FOR STC SA612NE			

System Description

The Airstair Door Assembly is a one-piece aluminum step-shell that provides an easier means of entering and exiting the aircraft for passengers and crew members. It can be incorporated into legacy DHC-6 Twin Otters (i.e., the -100, -200, and -300 model series). Both -100 and -200 models must have either SOO 6025 or MOD 6/1225 incorporated prior to installation of the Airstair Door. The -300 models incorporated the necessary structure from the factory to install Airstair Doors.

The PDM Airstair Door assembly installation is identical to previous Airstair Doors. Whether the door is open or closed the first attachment is to the fuselage and pivots about a hinge pin, which is captured between the two hinge halves by two spring pins. When open, the door weight and load is suspended by two upper cable assemblies. The aft assembly is adjustable to balance the load between both cables equally. When closed, the cable assemblies no longer support the door and its loadings. Instead, there are two latch pins which lock the door closed and are actuated by either the inner or outer handle. Additionally, the door Contact Assembly makes contact with the fuselage Contact Assembly giving the pilots indication that the door is shut and locked.

 PMA DESIGN AND MANUFACTURING <small>-----A Division of Team JAS-----</small> <small>Ph: (904) 292-2328</small> <small>Fx: (904) 292-2329</small> <small>Website: www.teamjas.com</small> <small>8493 Baymeadows Way, Jacksonville, FL 32256</small>	DOCUMENT NO: PDM-ICA110	REVISION: B	DATE: 8 Dec 2020	Page 8 of 40
	PRINCIPAL INSTRUCTIONS FOR CONTINUED AIRWORTHINESS FOR STC SA612NE			

2.0 Maintenance Instructions

Tools Required

No novel or unique tools are required for the maintenance of the PDM Airstair Door Assembly. Tools typically found in a certified Aviation & Powerplant Technician's toolbox are all that are necessary.

Servicing and Inspection Requirements

Inspection requirements for the operator can be found within the OEM documentation PSM 1-6-7 Inspection Requirements Manual, Chapter 52 – Doors. Here the operator can find the scheduling interval information that provides the recommended periods at which the door should be cleaned, inspected, adjusted, tested, and lubricated. **Make note that if the given Airstair Door Assembly installed does not incorporate the extension step, the operator should disregard the inspection requirement that explicitly specifies checking the condition and security of the extension step. This is the case for only this STC and applies to the B60902 and B70902 Airstair Door Assemblies.** The PDM Airstair Door is not considered to have any Airworthiness Limitations with regards to flight time or cycles. The PDM Airstair Door is only replaced or repaired upon condition.

**PRINCIPAL INSTRUCTIONS FOR CONTINUED
 AIRWORTHINESS FOR STC SA612NE**

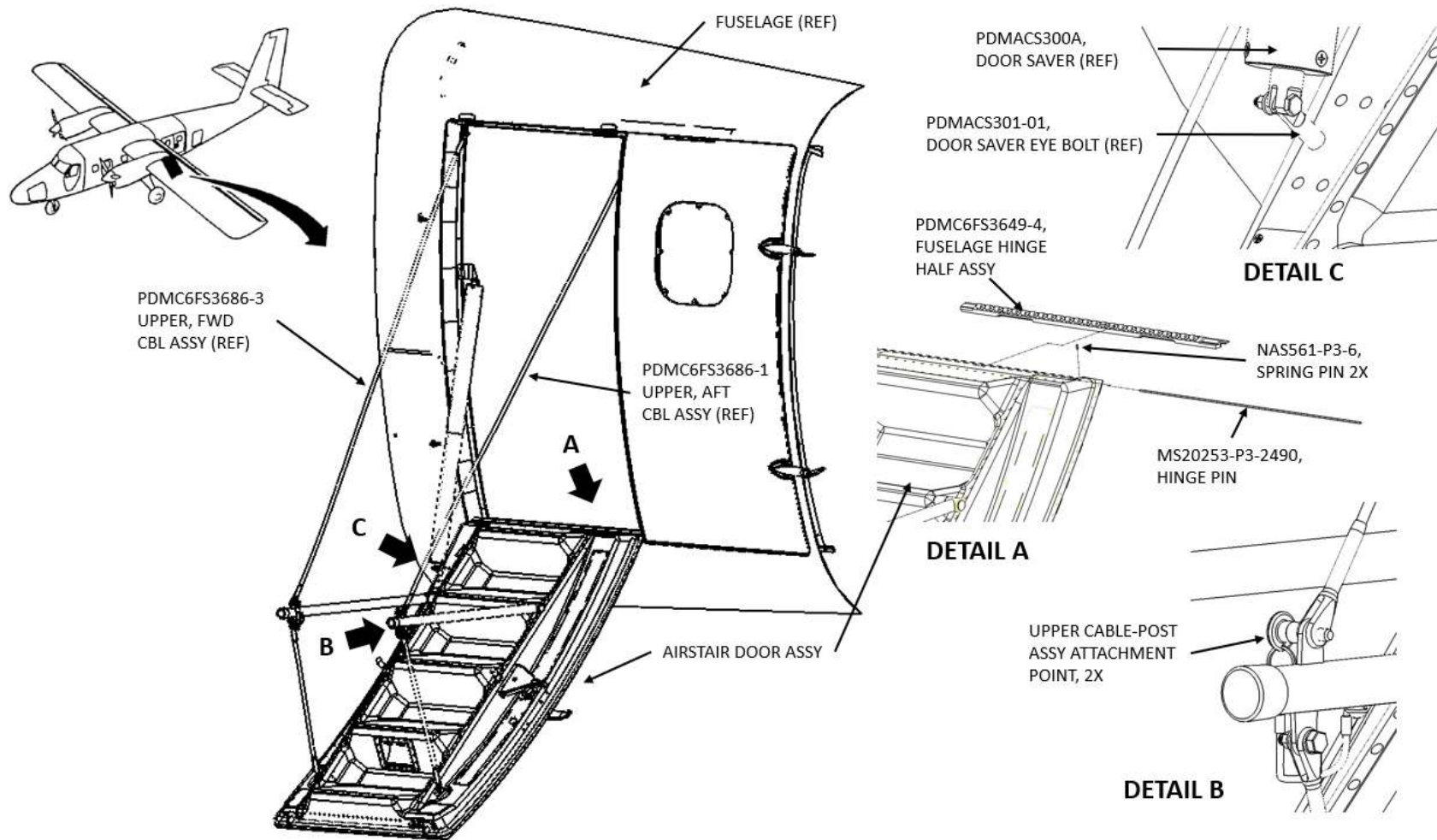



Figure 1.0 - Airstair Door Installation


 PMA DESIGN AND MANUFACTURING <small>-----A Division of Team JAS-----</small> <small>Ph: (904) 292-2328</small> <small>Fx: (904) 292-2329</small> <small>Website: www.teamjas.com</small> <small>8493 Baymeadows Way, Jacksonville, FL 32256</small>	DOCUMENT NO: PDM-ICA110	REVISION: B	DATE: 8 Dec 2020	Page 10 of 40
	PRINCIPAL INSTRUCTIONS FOR CONTINUED AIRWORTHINESS FOR STC SA612NE			

Door Installation

1. Determine aircraft configuration has SOO 6025 or MOD 6/1225 incorporated.
2. Remove existing fuselage hinge half assembly and disconnect brackets (C6FS4795-3 and C6FS4795-1).
3. Attach C6FS4795-3 and C6FS4795-1 brackets to fuselage hinge half PDMC6FS3649-4, then install assembly to fuselage.
4. Position, support, and align door hinge half with mating fuselage hinge half.
5. Insert Hinge Pin through both door and fuselage hinge halves.
6. Insert Spring Pins into door hinge half outer knuckles.
7. Connect Upper, Forward Cable Assembly and forward Post Assembly fitting with Quick-Release Pin.
8. Repeat step 5 for Upper, Aft Cable Assembly.
9. Adjust Upper, Aft Cable Assembly to balance tension equally between both Upper Cable Assemblies.
10. If the aircraft configuration has MOD 6/1606 (previously SOO 6114) incorporated, remove cover from Step Shell and install Door Saver Eye Bolt.
11. Attach Door Saver restraint device to Door Saver Eye Bolt.
12. Close and latch door.

Door Removal

1. Door removal is reverse of installation steps.

 PMA DESIGN AND MANUFACTURING <small>-----A Division of Team JAS-----</small> <small>Ph: (904) 292-2328</small> <small>Fx: (904) 292-2329</small> <small>Website: www.teamjas.com</small> <small>8493 Baymeadows Way, Jacksonville, FL 32256</small>	DOCUMENT NO: PDM-ICA110	REVISION: B	DATE: 8 Dec 2020	Page 11 of 40
	PRINCIPAL INSTRUCTIONS FOR CONTINUED AIRWORTHINESS FOR STC SA612NE			

3.0 Additional Instructions

Electrical Systems

The PDM Airstair Door electrical system comprises of a Contact Assembly, a Wire Assembly, and a Microswitch Assembly. The electrical system is identical to previous Airstair Door configurations and is unchanged. This system is to aid the pilots in detecting doors that are not completely closed and locked. The operator is directed to the OEM documentation PSM 1-6-2W1, PSM 1-6-2W2, or PSM 1-63-2W *Wiring Diagrams Manual*: Chapter 52 – Doors for the corresponding model -100, -200, or -300 series, respectively. The aforementioned documentation will direct the operator on the polarity of the electrical circuit should be based upon the given aircraft configuration (i.e., what mods are or are not incorporated).


Primary and Secondary Structures

The Airstair Door installation is neither a primary nor a secondary structure for the DHC-6 aircraft, (i.e., it does not provide any structural support during operation of the aircraft). There are currently no repairs for the structure of the door itself. If the door is damaged during service, it is required that any repairs to be completed are first acceptable by certification and/or approved data by the local Civil Aviation Authority. Otherwise replace the door.

Weight & Balance

The procedure to weigh and balance the aircraft is unchanged. The operator is directed to the OEM documentation PSM 1-6-8 or PSM 1-63-8(MSN) *Weight and Balance Handbook* for the corresponding model -100/-200 or -300, respectively.


The weight of the STC door assemblies differ. For B60902 and B70902 doors, respectively they are approximately 50-lb (23-kg) and 45-lb. (20-kg). Neither of these weights include the extension step & installation, which if configured with the B60902 door would add an additional 9.4-lb (4.3-kg).

 PMA DESIGN AND MANUFACTURING <small>-----A Division of Team JAS-----</small> <small>Ph: (904) 292-2328</small> <small>Fx: (904) 292-2329</small> <small>Website: www.teamjas.com</small> <small>8493 Baymeadows Way, Jacksonville, FL 32256</small>	DOCUMENT NO: PDM-ICA110	REVISION: B	DATE: 8 Dec 2020	Page 12 of 40
	PRINCIPAL INSTRUCTIONS FOR CONTINUED AIRWORTHINESS FOR STC SA612NE			

4.0 Airworthiness Limitations

The Airworthiness Limitations section is FAA approved and specifies maintenance required under §§ 43.16 and 91.403 of Title 14 of the Code of Federal Regulations unless an alternative program has been FAA approved.

There are no new (or additional) airworthiness limitations associated with this equipment and/or installation. PDM Airstair Doors, B60902 and B70902 are only repaired or replaced based upon condition. For further questions, the operator is directed to the OEM documentation PSM 1-6-11 *Airframe Airworthiness Limitations Manual* and PSM 1-6-7 *Inspections Requirements Manual*.

 PMA DESIGN AND MANUFACTURING <small>-----A Division of Team JAS-----</small> <small>Ph: (904) 292-2328</small> <small>Fx: (904) 292-2329</small> <small>Website: www.teamjas.com</small> <small>8493 Baymeadows Way, Jacksonville, FL 32256</small>	DOCUMENT NO: PDM-ICA110	REVISION: B	DATE: 8 Dec 2020	Page 13 of 40
	PRINCIPAL INSTRUCTIONS FOR CONTINUED AIRWORTHINESS FOR STC SA612NE			

5.0 Illustrated Part List

The following document provides an Illustrated Parts List for the PMA Design and Manufacturing Airstair Door Assemblies. It is intended to aid the operator in identifying components that can be removed and replaced. It is divided based upon the two different configurations, B60902 and B70902.

B60902 Airstair Door Assembly

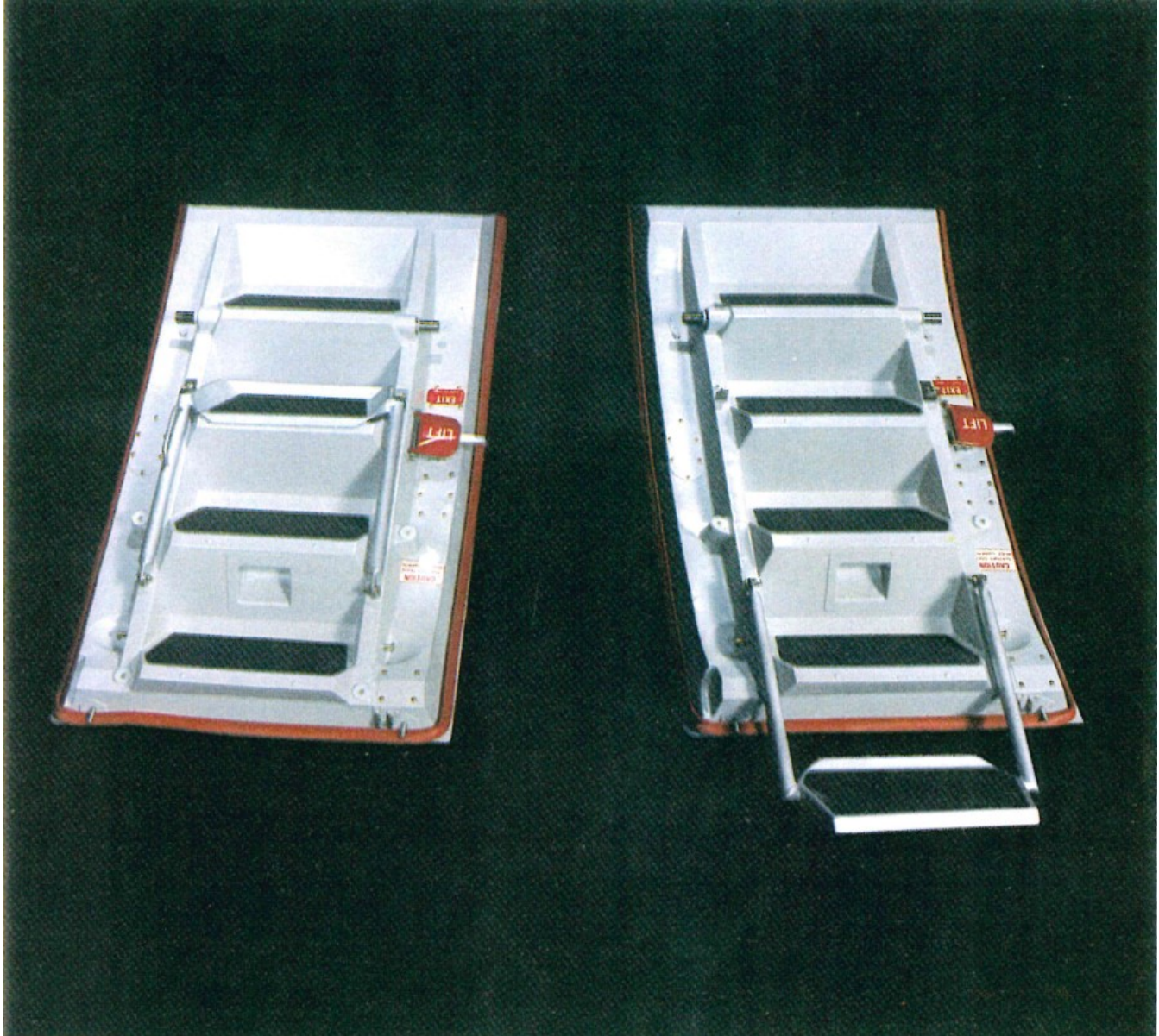
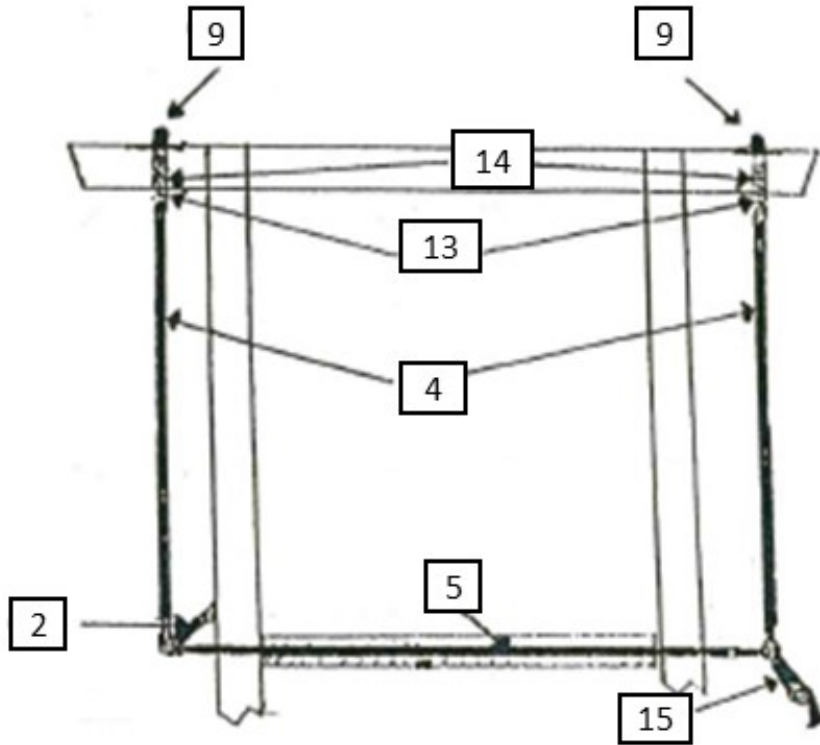


Figure 2.0 - B60902 Airstair Door Assembly

**PRINCIPAL INSTRUCTIONS FOR CONTINUED
AIRWORTHINESS FOR STC SA612NE**

Figure 3.0 - Internal Latching Mechanism
(Step Shell Removed)



PRINCIPAL INSTRUCTIONS FOR CONTINUED
AIRWORTHINESS FOR STC SA612NE

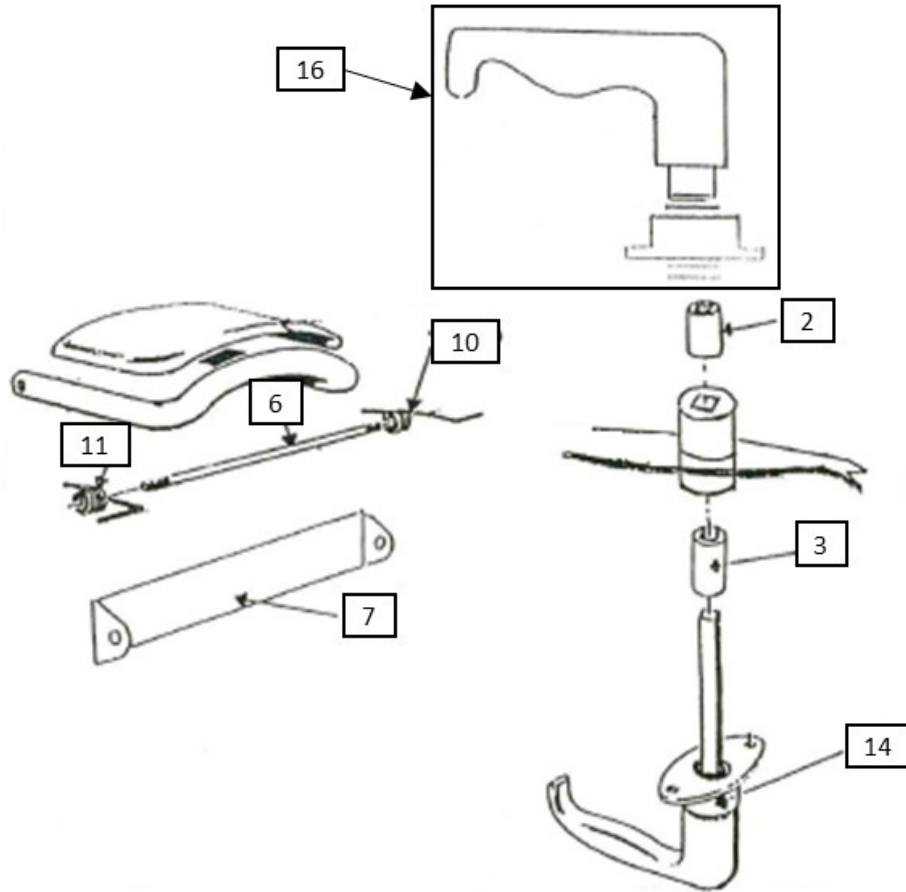
FIG.	ITEM NO.	PART NUMBER	DESCRIPTION	QTY PER ASSY
3.0	-1	B60902	AIRSTAIR DOOR ASSEMBLY	REF
	2	B90645-1	. LEVER ASSEMBLY (FWD) ATTACHING PARTS	1
	-3	AN174-10A	. BOLT —X—	1
	4	B48613-1	. PUSH ROD ASSEMBLY (PIN)	2
	5	B48614-1	. PUSH ROD ASSEMBLY (CROSS) ATTACHING PARTS	1
	-6	MS20392-2C15	. FLAT HEAD PIN	2
	-7	AN960PD10	. WASHER	2
	-8	MS24665-153	. COTTER PIN —X—	2
	9	B48615-1	. LATCH PIN ATTACHING PARTS	2
	-10	MS20392-2C13	. FLAT HEAD PIN	2
	-11	AN960-10L	. WASHER	2
	-12	MS24665-134	. COTTER PIN	2
	13	MS16562-35	. SPRING PIN —X—	2
	14	B60927-1	. SPRING	2
	15	B48612-1	. LEVER ASSEMBLY (AFT)	1

(- ITEM NOT ILLUSTRATED)



PRINCIPAL INSTRUCTIONS FOR CONTINUED
AIRWORTHINESS FOR STC SA612NE

Figure 4.0 – Inner and Outer Handle and Guard Assemblies



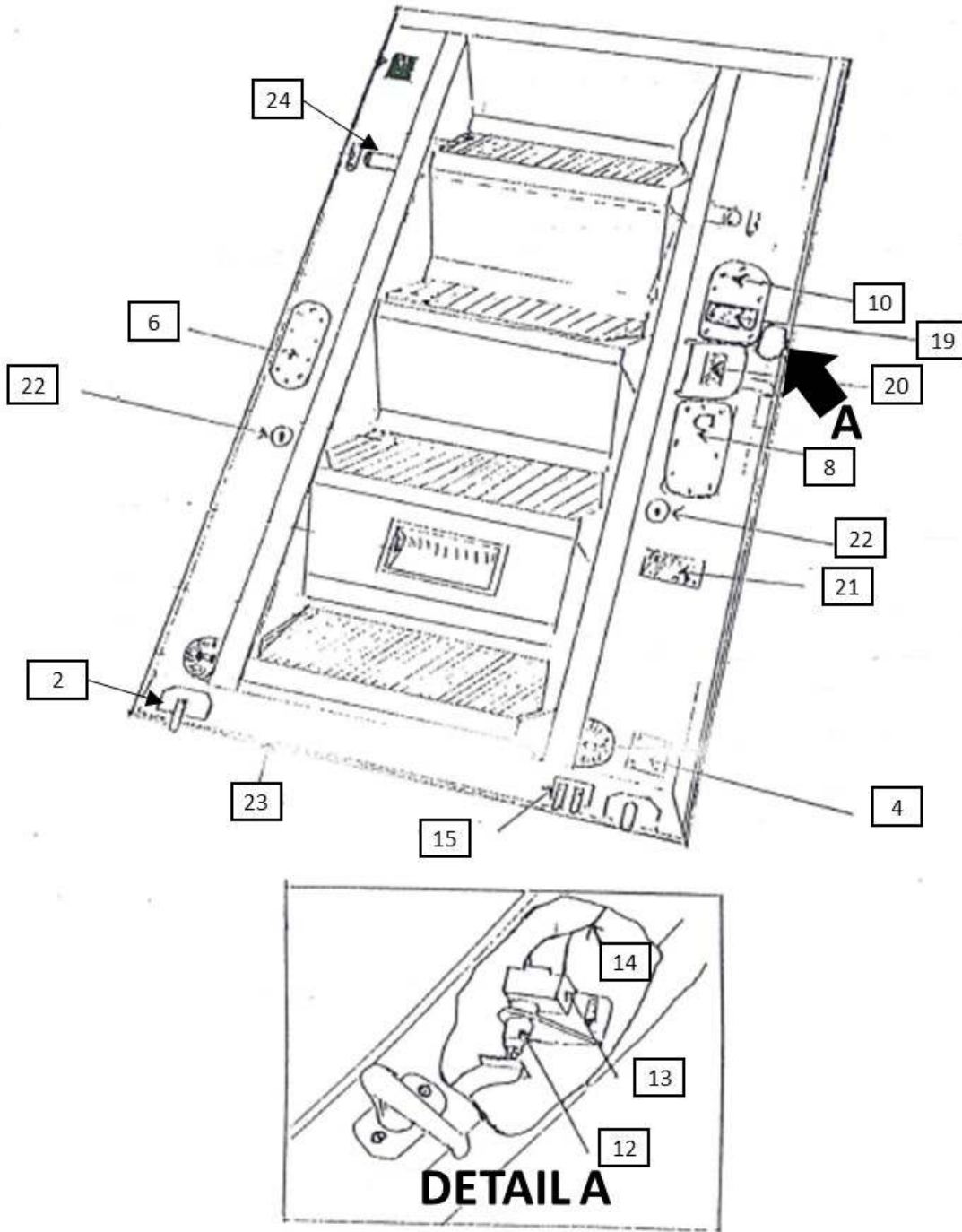
PRINCIPAL INSTRUCTIONS FOR CONTINUED
AIRWORTHINESS FOR STC SA612NE

FIG.	ITEM NO.	PART NUMBER	DESCRIPTION	QTY PER ASSY
4.0	-1	B60902	AIRSTAIR DOOR ASSEMBLY	REF
	2	B48617-1	. SPACER HANDLE (INNER - SHORT)	1
	3	B48617-2	. SPACER HANDLE (OUTER - LONG)	1
	-4	B60932-1	. HANDLE GUARD ASSEMBLY	1
	-5	B60932-3	.. FRAME	1
	6	B60932-5	.. PIN ROD	1
	7	B60932-7	.. BRACKET	1
	-8	MS24665-88	.. COTTER PIN (ALTN PART TO AN380-2-3)	2
	-8A	AN380-2-3	.. COTTER PIN (ALTN PART TO MS24665-88)	2
	9	B60932-11	.. SPRING	1
	10	B60932-12	.. SPRING	1
	-11	B60932-15	.. SHIELD	1
			ATTACHING PARTS	
	-12	MS51861-23C	.. SCREW	4
			—X—	
	13	DSC177-2-116	. OUTER HANDLE ASSEMBLY	1
			ATTACHING PARTS	
	-14	AN505-8R10	. SCREW	2
			—X—	
	15	B50500	. INNER HANDLE ASSEMBLY	1
			ATTACHING PARTS	
	-16	MS24694-S7	. SCREW	2
			—X—	

(- ITEM NOT ILLUSTRATED)

PRINCIPAL INSTRUCTIONS FOR CONTINUED
AIRWORTHINESS FOR STC SA612NE

Figure 5.0 - Interior Components



PRINCIPAL INSTRUCTIONS FOR CONTINUED
AIRWORTHINESS FOR STC SA612NE

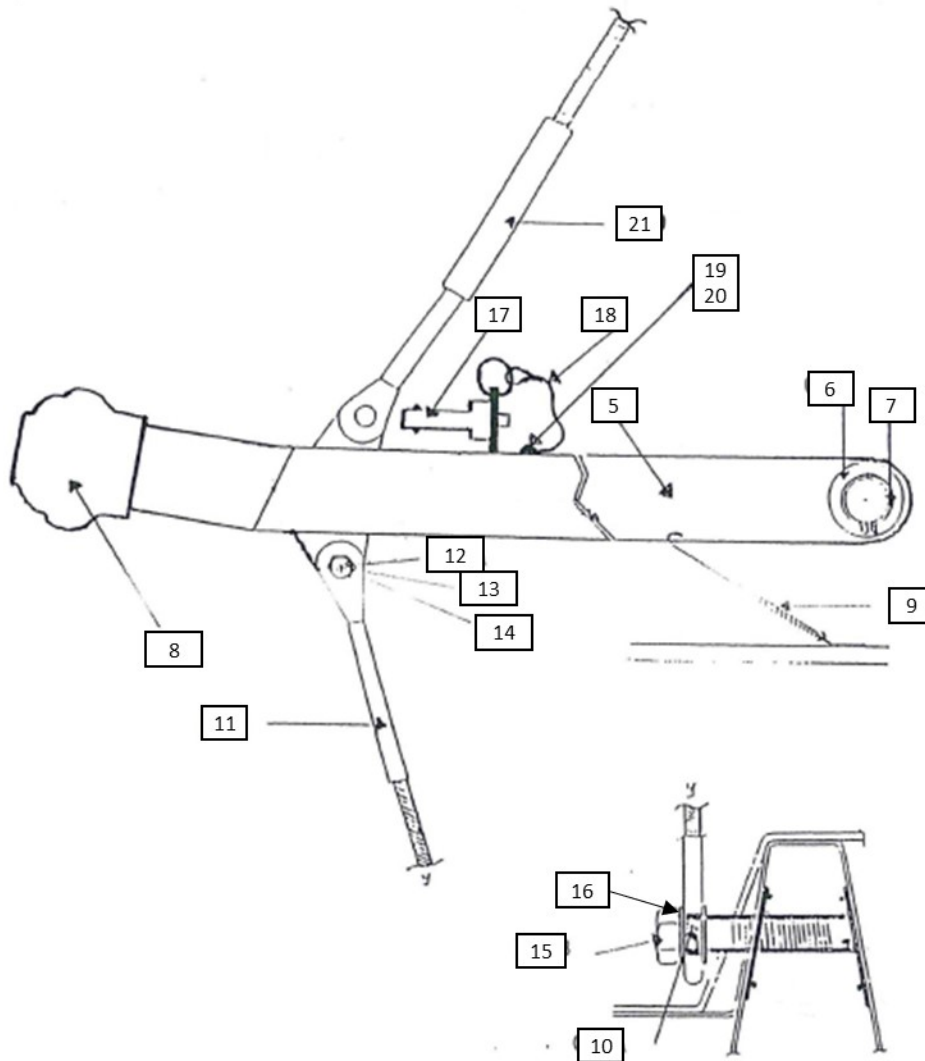
FIG.	ITEM NO.	PART NUMBER	DESCRIPTION	QTY PER ASSY
5.0	-1	B60902	AIRSTAIR DOOR ASSEMBLY	REF
	2	B48611-1	. GUIDE BLOCK ASSEMBLY ATTACHING PARTS	2
	-3	AN509-10R10	. SCREW —X—	2
	4	B60924-1	. INSPECTION PANEL LOCK PIN AFT ATTACHING PARTS	1
	-5	AN509-8R9	. SCREW —X—	4
	6	B60924-3	. INSPECTION PANEL DOOR LOCK FWD ATTACHING PARTS	1
	-7	AN509-8R9	. SCREW —X—	6
	8	B60924-5	. INSPECTION PANEL DOOR LOCK INDICATOR ATTACHING PARTS	1
	-9	AN509-8R9	. SCREW —X—	5
	10	B60924-7	. INSPECTION PANEL DOOR LOCK ATTACHING PARTS	1
	-11	AN509-8R9	. SCREW —X—	5
	12	MD3211-Q	. ACTUATOR, MICROSWITCH	1
	13	BZ-2RT04	. MICROSWITCH	1
	14	B60933-1	. WIRE ASSEMBLY	1
	15	B60939-1	. CONTACT ASSEMBLY ATTACHING PARTS	1
	-16	AN509-8R10	. SCREW	1
	-17	AN525-832R9	. SCREW	1
	-18	AN960PD8L	. WASHER —X—	1
	19	C6FS3636-27	. LABEL, EXIT	1
	20	C6G1080-27	. LABEL, LIFT	1
	21	C6FF1770-27	. LABEL, AIRSTAIR DOOR	1
	22	B65601-5	. REST (DOOR POST)	1
	23	PDMCVR-109	. SEAL, SILICONGE SPONGE	1
	24	B48605-1	. TUBE ASSEMBLY —X—	1

(- ITEM NOT ILLUSTRATED)



**PRINCIPAL INSTRUCTIONS FOR CONTINUED
AIRWORTHINESS FOR STC SA612NE**

Figure 6.0 - Post Assembly (AFT)



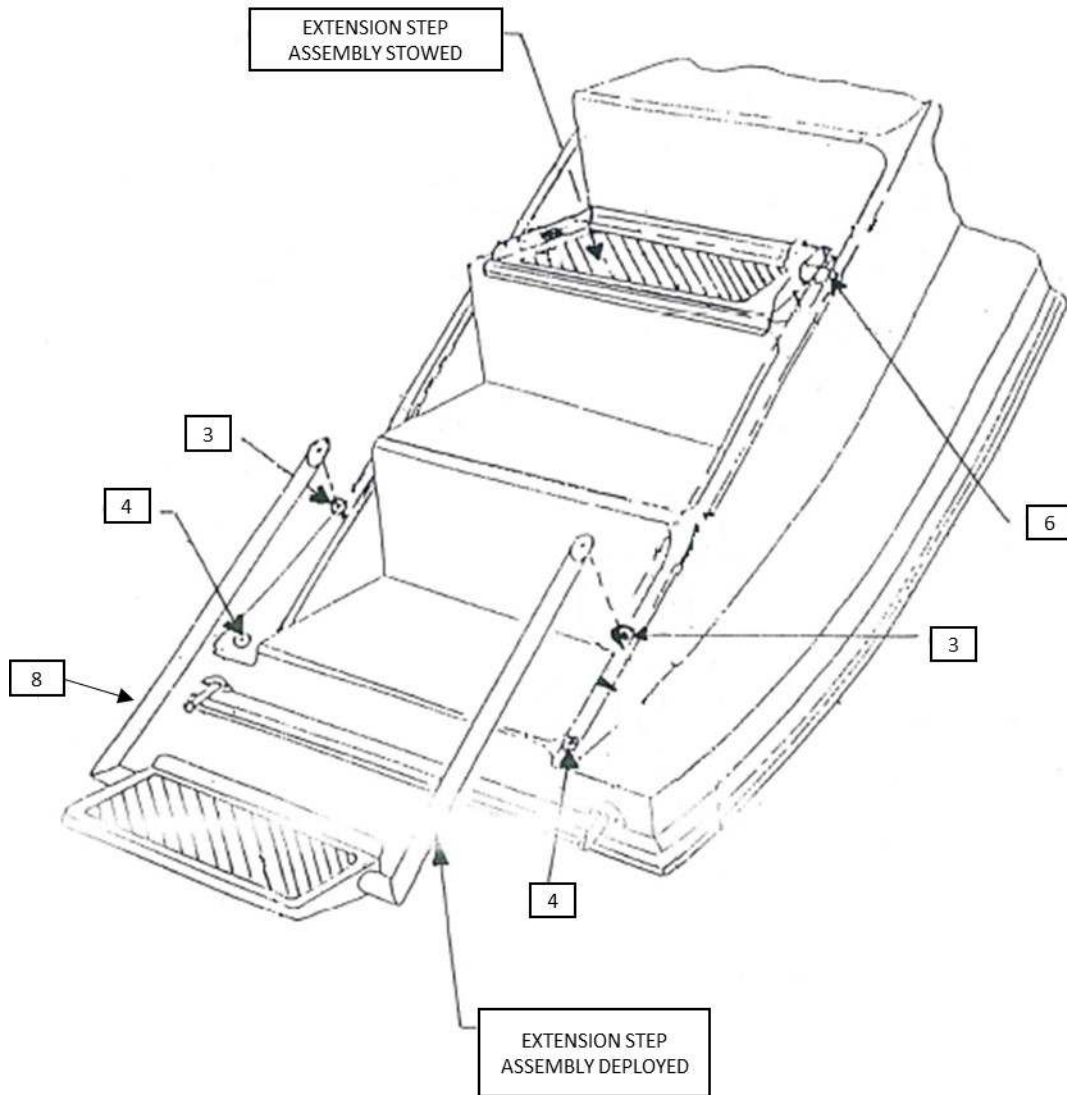
PRINCIPAL INSTRUCTIONS FOR CONTINUED
AIRWORTHINESS FOR STC SA612NE

FIG.	ITEM NO.	PART NUMBER	DESCRIPTION	QTY PER ASSY
6.0	-1	B60902	AIRSTAIR DOOR ASSEMBLY	REF
	-2	B63002-1	. POST (FWD)	1
			ATTACHING PARTS	
	-3	AN960-1416L	. WASHER	1
	-4	MS16624-1087	. RETAINING RING	1
			—X—	
	5	B63002-2	. POST (AFT)	1
			ATTACHING PARTS	
	6	AN960-1416L	. WASHER	1
	7	MS16624-1087	. RETAINING RING	1
			—X—	
	8	SB22	. CRUTCH TIP	2
	9	C4B10036-3	. SPRING-POST RETURN	2
	10	B63006-1	. BUSHING	2
	11	C6FS3686-5	. LOWER CABLE ASSEMBLY (ALTN PART TO PDMC6FS3686-5)	2
	-11A	PDMC6FS3686-5	. LOWER CABLE ASSEMBLY (ALTN PART TO C6FS3686-5)	2
			ATTACHING PARTS	
	12	AN4-6A	. BOLT	1
	13	AN960-416L	. WASHER	1
	14	MS20364-428A	. NUT	1
	15	AN5A-10	. BOLT	1
16	AN960-516	. WASHER	2	
		—X—		
17	NAS1334AS3505D	. PIN-QUICK RELEASE	2	
18	B73004-1	. CABLE ASSEMBLY	2	
		ATTACHING PARTS		
19	AN530-10R6	. SCREW	1	
20	NAS1149D0363J	. WASHER	1	
		—X—		
21	C6FS3686-3	. UPPER CABLE ASSEMBLY, FWD (ALTN PART TO PDMC6FS3686-3)	1	
-21A	PDMC6FS3686-3	. UPPER CABLE ASSEMBLY, FWD (ALTN PART TO C6FS3686-3)	1	
		—X—		

(- ITEM NOT ILLUSTRATED)

PRINCIPAL INSTRUCTIONS FOR CONTINUED
AIRWORTHINESS FOR STC SA612NE

Figure 7.0 – Extension Step Installation (optional)





**PMA DESIGN AND
MANUFACTURING**
-----A Division of Team JAS-----
Ph: (904) 292-2328
Fk: (904) 292-2329
Website: www.teamjas.com
8493 Baymeadows Way, Jacksonville, FL 32256

DOCUMENT NO:
PDM-ICA110

REVISION:
B

DATE:
8 Dec 2020

Page
24 of 40

**PRINCIPAL INSTRUCTIONS FOR CONTINUED
AIRWORTHINESS FOR STC SA612NE**

FIG.	ITEM NO.	PART NUMBER	DESCRIPTION	QTY PER ASSY
7.0	-1	B60902	AIRSTAIR DOOR ASSEMBLY	REF
	-2	B65601-1	. EXTENSION STEP INSTALLATION	1
	3	B60942-1	.. ANCHOR PIN	2
	4	B65601-5	.. REST	2
			ATTACHING PARTS	
	-5	AN509-10R10	.. SCREW	2
			—X—	
	6	B65601-7	.. CLIP	2
			ATTACHING PARTS	
	-7	AN525-10R8	.. SCREW	4
			—X—	
8	B65602-1	.. EXTENSION STEP ASSEMBLY	1	
		ATTACHING PARTS		
-9	AN5-10A	.. BOLT	2	
-10	AN960-516	.. WASHER	2	
-11	MS20364-524	.. NUT	2	
		—X—		

(- ITEM NOT ILLUSTRATED)



**PMA DESIGN AND
MANUFACTURING**
-----A Division of Team JAS-----
Ph: (904) 292-2328
Fk: (904) 292-2329
Website: www.teamjas.com
8493 Baymeadows Way, Jacksonville, FL 32256

DOCUMENT NO:
PDM-ICA110

REVISION:
B

DATE:
8 Dec 2020

Page
25 of 40

**PRINCIPAL INSTRUCTIONS FOR CONTINUED
AIRWORTHINESS FOR STC SA612NE**

B70902 Airstair Door Assembly

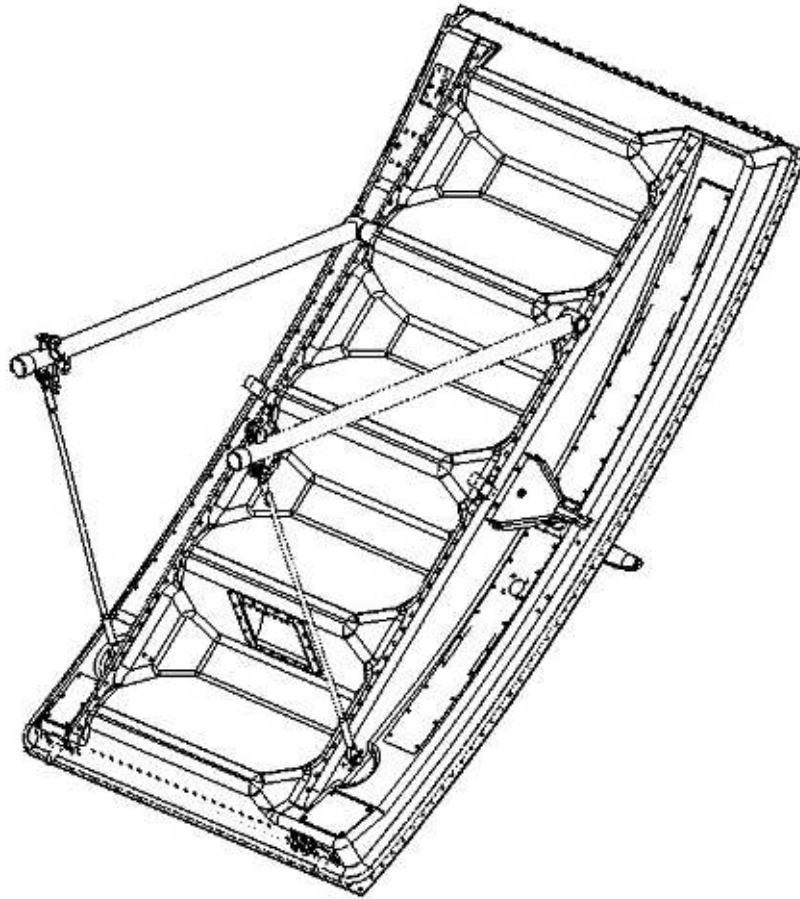
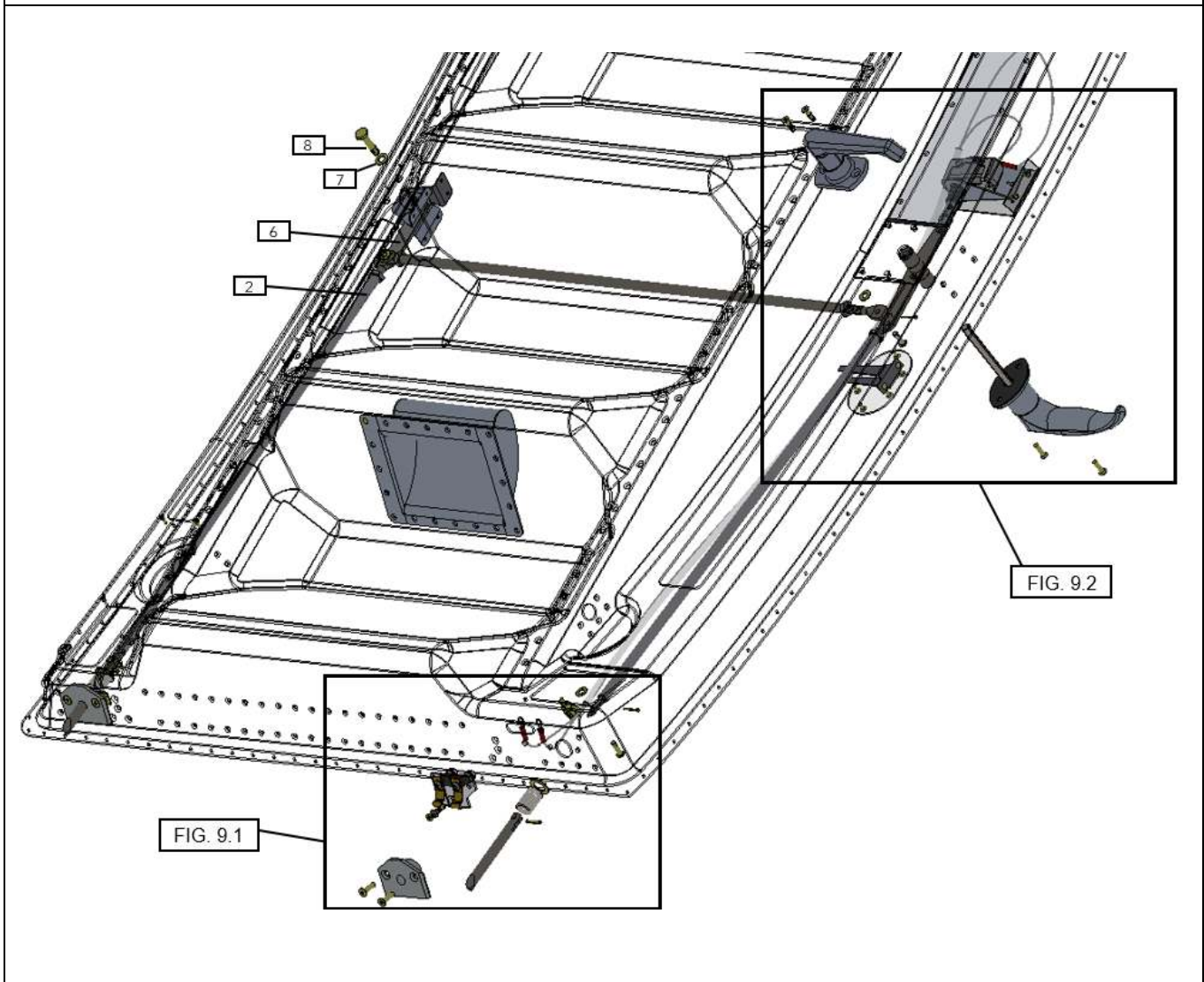


Figure 8.0 - B70902 Airstair Door Assembly

PRINCIPAL INSTRUCTIONS FOR CONTINUED
AIRWORTHINESS FOR STC SA612NE

Figure 9.0 - Locking Mechanism Installation





DOCUMENT NO:
PDM-ICA110

REVISION:
B

DATE:
8 Dec 2020

Page
27 of 40

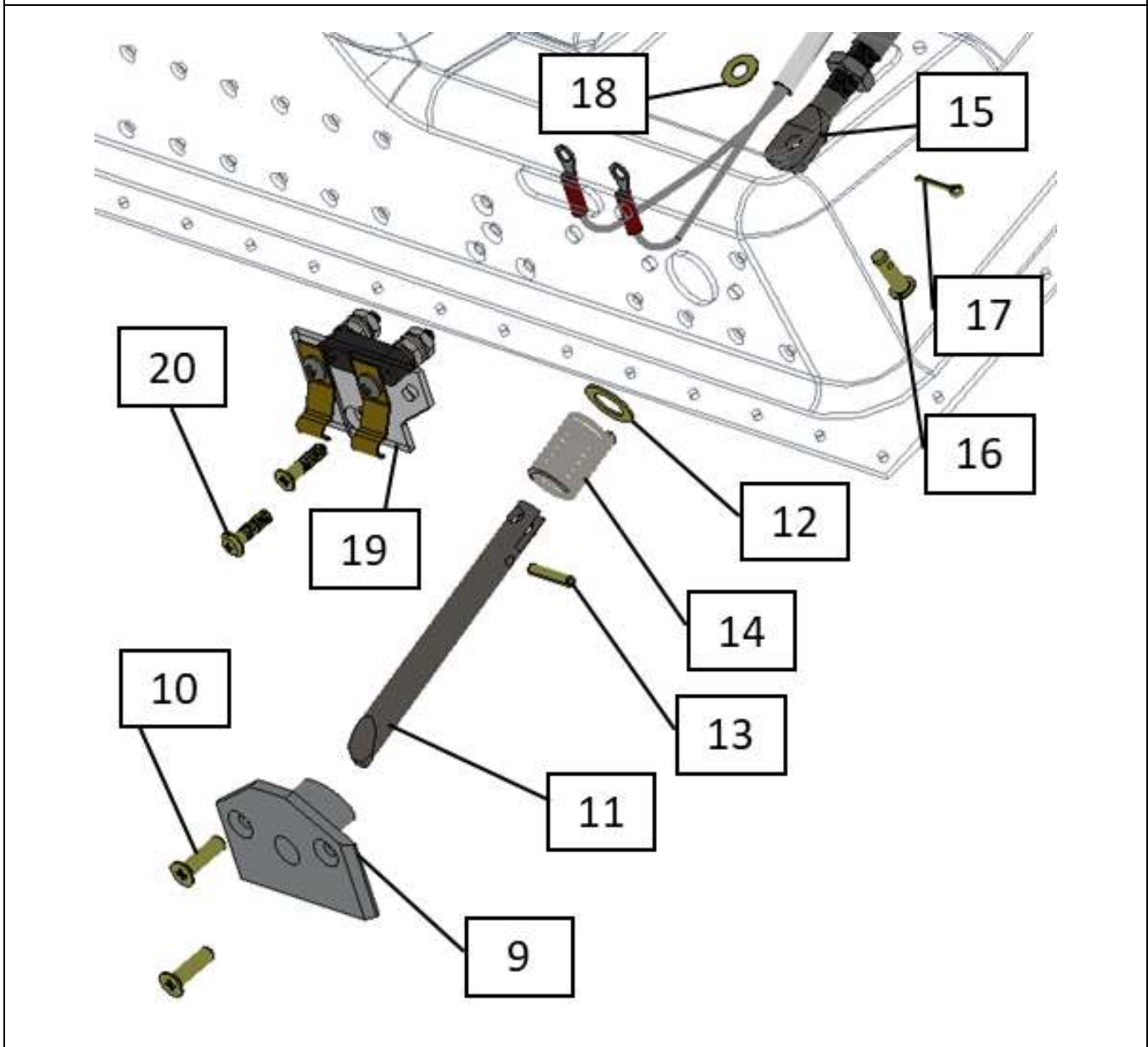
**PRINCIPAL INSTRUCTIONS FOR CONTINUED
AIRWORTHINESS FOR STC SA612NE**

FIG.	ITEM NO.	PART NUMBER	DESCRIPTION	QTY PER ASSY
9.0	-1	B70902	AIRSTAIR DOOR ASSEMBLY	REF
	2	B78613-1	. PUSH ROD ASSEMBLY	2
			ATTACHING PARTS	
	-3	MS20392-2C15	. CLEVIS PIN	1
	-4	MS24665-132	. COTTER PIN	1
	-5	NAS1149F0316P	. WASHER	1
			—X—	
	6	B70945-1	. FWD ARM LEVER	1
		ATTACHING PARTS		
	7	NAS1149F0432P	. WASHER	1
	8	NAS6204-12	. HEX HEAD BOLT	1
			—X—	

(- ITEM NOT ILLUSTRATED)

PRINCIPAL INSTRUCTIONS FOR CONTINUED
AIRWORTHINESS FOR STC SA612NE

Figure 9.1 - Contact Assembly and Guide Block Installation



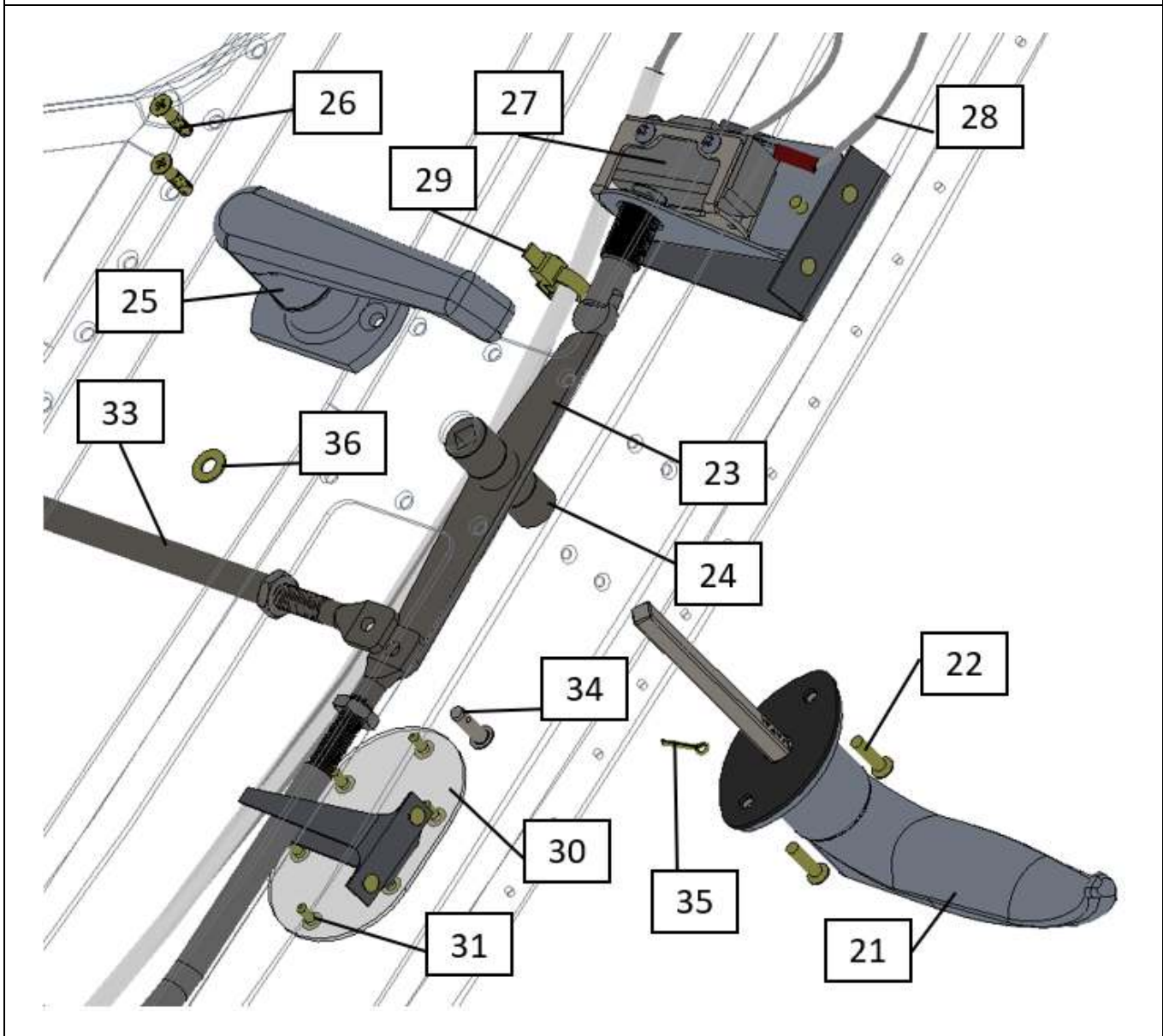
PRINCIPAL INSTRUCTIONS FOR CONTINUED
AIRWORTHINESS FOR STC SA612NE

FIG.	ITEM NO.	PART NUMBER	DESCRIPTION	QTY PER ASSY
9.1	-1	B70902	AIRSTAIR DOOR ASSEMBLY	REF
	9	B78611-1	. GUIDE BLOCK ASSEMBLY NOTE: Ream B78611-5 bushing to fit B78615-1 latch pin through B78611-1 guide block assembly.	2
			ATTACHING PARTS	
	10	MS24694-S52	. SCREW —X—	2
	11	B78615-1	. LATCH PIN	2
	12	NAS1149F0632P	. WASHER	2
	13	MS16562-35	. SPRING PIN	2
	14	B70927-1	. SPRING	2
	15	B78613-1	. PUSH ROD ASSEMBLY ATTACHING PARTS	1
	16	MS20392-2C15	. CLEVIS PIN	1
	17	MS24665-132	. COTTER PIN	1
	18	NAS1149F0316P	. WASHER —X—	1
	19	B70939-1	. CONTACT ASSEMBLY ATTACHING PARTS	1
	20	AN525-832R9	. SCREW	1
	-21	MS24694-S7	. SCREW —X—	1

(- ITEM NOT ILLUSTRATED)

PRINCIPAL INSTRUCTIONS FOR CONTINUED
 AIRWORTHINESS FOR STC SA612NE

Figure 9.2 - Handle Assembly Installations



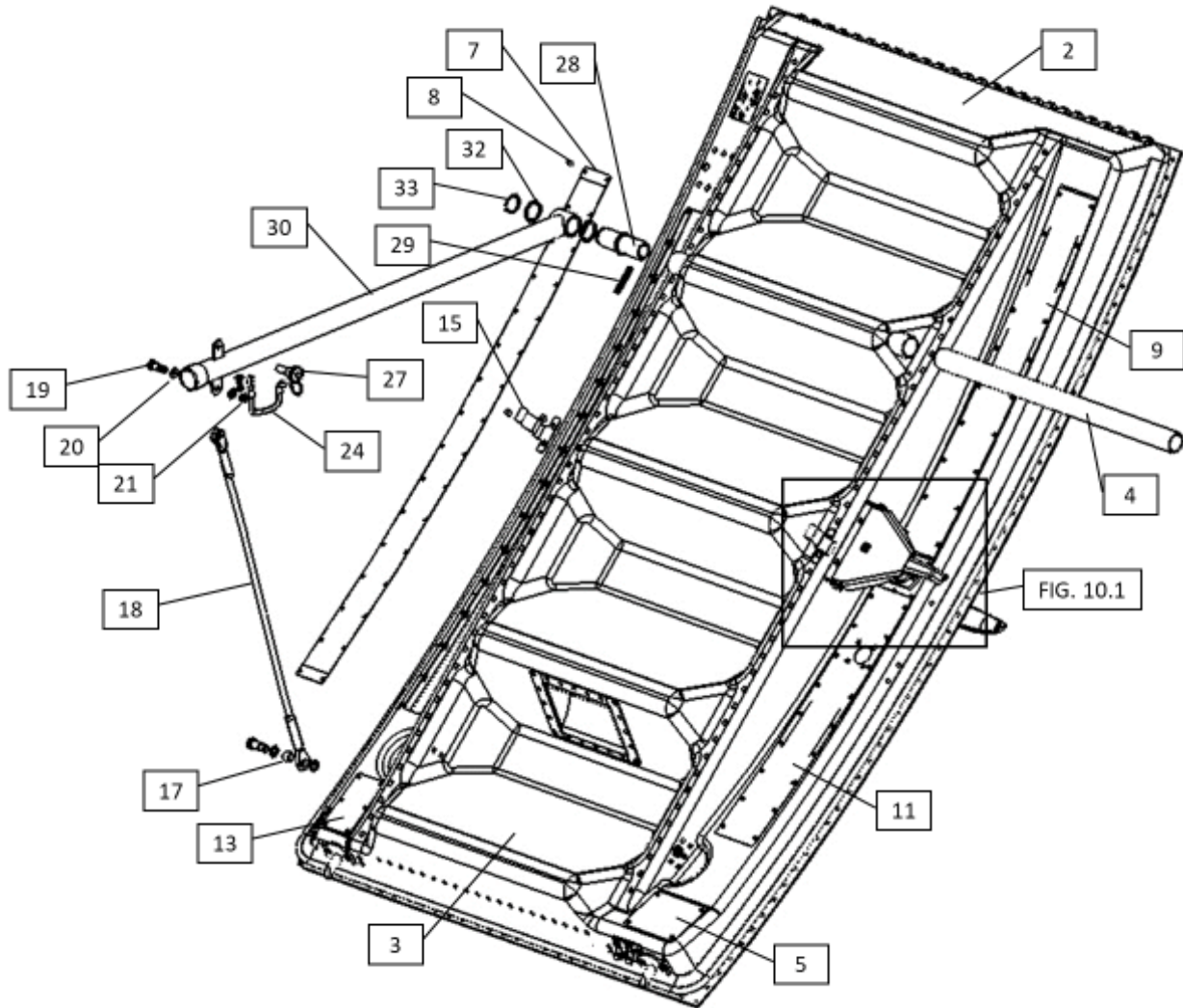
PRINCIPAL INSTRUCTIONS FOR CONTINUED
AIRWORTHINESS FOR STC SA612NE

FIG.	ITEM NO.	PART NUMBER	DESCRIPTION	QTY PER ASSY
9.2	-1	B70902	AIRSTAIR DOOR ASSEMBLY	REF
	21	PDMVSC25-2-116NL	. OUTER HANDLE ASSEMBLY	1
	-21A	PDMVSC25-2-116NLP	. OUTER HANDLE ASSEMBLY (ALTN PART TO PDMVSC25-2-116NL)	1
	-21B	AR83-2-116	. OUTER HANDLE ASSEMBLY (ALTN PART TO PDMVSC25-2-116NL)	1
	-21C	DSC177-2-116	. OUTER HANDLE ASSEMBLY (ALTN PART TO PDMVSC25-2-116NL)	1
	-21D	VSD25-2-116	. OUTER HANDLE ASSEMBLY (ALTN PART TO PDMVSC25-2-116NL)	1
			ATTACHING PARTS	
	22	MS24693-S51	. SCREW —X—	2
	23	B78612-1	. LEVER	1
	24	B78617-1	. SPACER	2
	25	B70500	. INNER HANDLE ASSEMBLY	1
			ATTACHING PARTS	
	26	MS24694-S7	. SCREW —X—	2
	27	B70935-1	. MICROSWITCH ASSEMBLY	1
	28	B70933-1	. WIRE ASSEMBLY	1
			ATTACHING PARTS	
	-29	MS3367-1-9	. ELECTRICAL TIEDOWN STRAP —X—	3
	30	B70929-1	. SIGHTGLASS, SKIN	1
			ATTACHING PARTS	
	31	MS24693-S4	.. MACHINE SCREW	6
	-32	CB6014CR04-1P	.. NUTPLATE —X—	6
	33	B78614-1	. PUSH ROD ASSEMBLY	1
			ATTACHING PARTS	
	34	MS20392-2C15	. CLEVIS PIN	2
	35	MS24665-132	. COTTER PIN	2
	36	NAS1149F0316P	. WASHER —X—	2

(- ITEM NOT ILLUSTRATED)

PRINCIPAL INSTRUCTIONS FOR CONTINUED
AIRWORTHINESS FOR STC SA612NE

Figure 10.0 - Interior Components



PRINCIPAL INSTRUCTIONS FOR CONTINUED
AIRWORTHINESS FOR STC SA612NE

FIG.	ITEM NO.	PART NUMBER	DESCRIPTION	QTY PER ASSY
10.0	-1	B70902	AIRSTAIR DOOR ASSEMBLY	REF
	2	B70953-1	. TOP STEP TREAD TAPE	1
	3	B70953-3	. STEP TREAD TAPE	4
	4	B78605-3	. TUBE	1
	5	B70924-1	. INSPECTION PANEL	1
			ATTACHING PARTS	
	-6	MS24693-S4	. SCREW	4
			—X—	
	7	B70924-3	. INSPECTION PANEL	1
			ATTACHING PARTS	
	8	MS24693-S4	. MACHINE SCREW	32
			—X—	
	9	B70924-5	. INSPECTION PANEL	1
			ATTACHING PARTS	
	-10	MS24693-S4	. SCREW	20
			—X—	
	11	B70924-7	. INSPECTION PANEL	1
			ATTACHING PARTS	
	-12	MS24693-S4	. SCREW	18
			—X—	
	13	B70924-9	. INSPECTION PANEL	1
			ATTACHING PARTS	
	-14	MS24693-S4	. SCREW	6
		—X—		
15	B73003-1	. CLIP	2	
		ATTACHING PARTS		
-16	CR3242-5-03	. RIVET	2	
		—X—		
17	B73005-1	. BUSHING	2	
18	PDMC6FS3686-5	. LOWER CABLE ASSEMBLY	2	
		ATTACHING PARTS		
19	AN4-7A	. BOLT	1	
20	NAS1149F0463P	. WASHER	2	
21	MS21042L4	. NUT	1	
-22	AN5-10A	. BOLT	1	
-23	NAS1149F0563P	. WASHER	2	
		—X—		

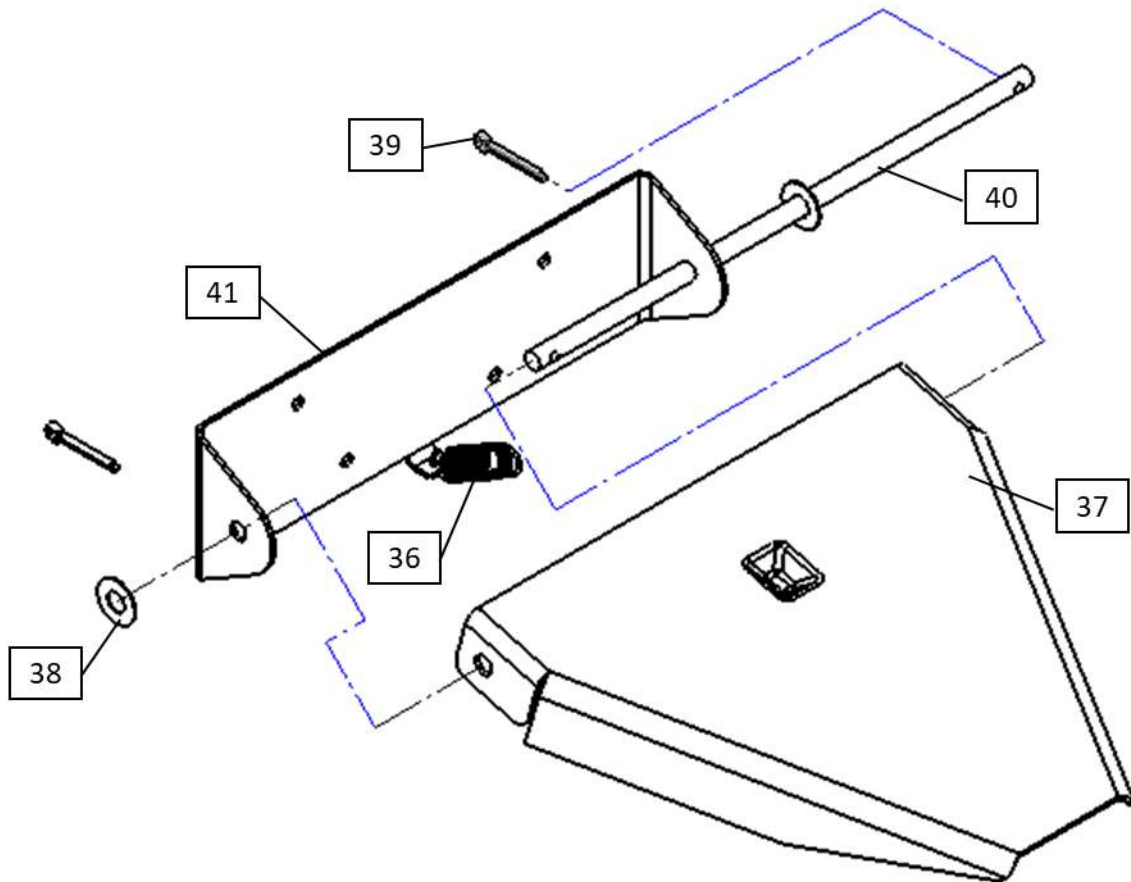
PRINCIPAL INSTRUCTIONS FOR CONTINUED
AIRWORTHINESS FOR STC SA612NE

FIG.	ITEM NO.	PART NUMBER	DESCRIPTION	QTY PER ASSY
	24	B73004-1	. CABLE ASSEMBLY ATTACHING PARTS	2
	-25	AN530-10R6	. SCREW	1
	-26	NAS1149D0363J	. WASHER —X—	1
	27	NAS1334A3S05D	. QUICK RELEASE PIN —X—	2
	28	B78605-11	. PLUG ATTACHING PARTS	2
	29	B78609-1	. STEEL COILED SPRING PIN —X—	2
	30	B73002-1	. POST ASSEMBLY	2
	-31	B73002-13	.. END CAP ATTACHING PARTS	1
	32	B78605-13	. WASHER	2
	33	MS16624-4087	. RING, RETAINING, EXTERNAL —X—	1
	-34	PDM-01AD	. LABEL, CAUTION	1
	-34A	C6FF1770-27	. LABEL, AIRSTAIR DOOR (ALTN PART TO PDM-01AD)	1
	-35	PDM-02AD	. LABEL, EXIT	1
	-35A	C6FF1770-27	. LABEL, AIRSTAIR DOOR (ALTN PART TO PDM-02AD)	1

(- ITEM NOT ILLUSTRATED)

PRINCIPAL INSTRUCTIONS FOR CONTINUED
AIRWORTHINESS FOR STC SA612NE

Figure 10.1 - Handle Guard Assembly





**PMA DESIGN AND
MANUFACTURING**
-----A Division of Team JAS-----
Ph: (904) 292-2328
Fk: (904) 292-2329
Website: www.teamjas.com
8493 Baymeadows Way, Jacksonville, FL 32256

DOCUMENT NO:
PDM-ICA110

REVISION:
B

DATE:
8 Dec 2020

Page
36 of 40

**PRINCIPAL INSTRUCTIONS FOR CONTINUED
AIRWORTHINESS FOR STC SA612NE**

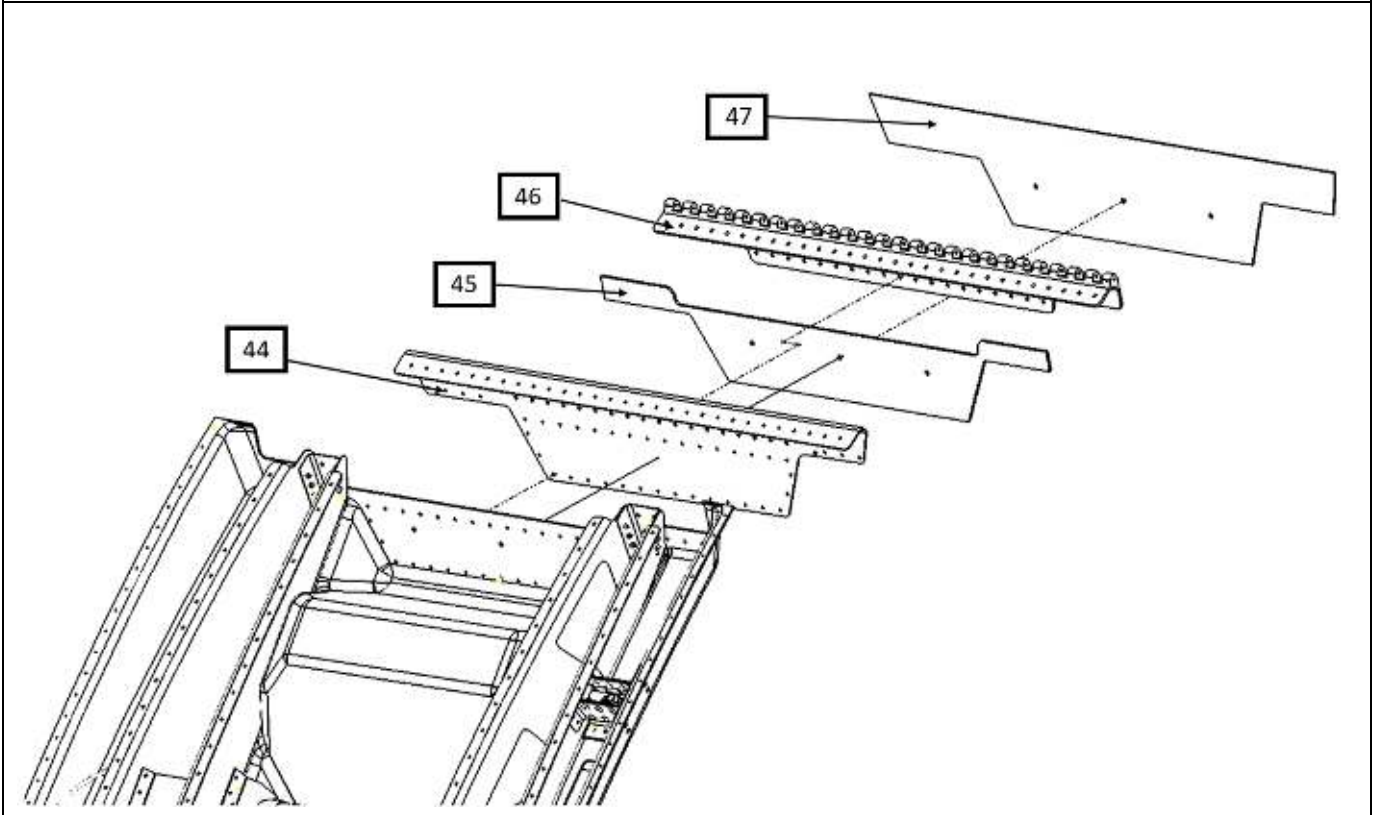
FIG.	ITEM NO.	PART NUMBER	DESCRIPTION	QTY PER ASSY
10.1	-1	B70902	AIRSTAIR DOOR ASSEMBLY	REF
	-35	B70932-1	. GUARD ASSEMBLY	1
	36	B70932-19	.. SPRING	1
	37	B70932-17	.. SHIELD	1
	38	NAS1149CN816R	.. WASHER	2
	39	MS24665-208	.. SPLIT COTTER PIN	2
	40	B70932-5	.. PIN ROD	1
	41	B70932-7	.. BRACKET	1
			ATTACHING PARTS	
	-42	CR3213-4-3	.. RIVET	4
			—X—	
	-43	PDM-04AD	. LABEL, LIFT	1
	-43A	C6G1080-27	. LABEL, LIFT (ALTN PART TO PDM-04AD)	1

(- ITEM NOT ILLUSTRATED)



PRINCIPAL INSTRUCTIONS FOR CONTINUED
AIRWORTHINESS FOR STC SA612NE

Figure 11.0 - Hinge-Half Installation





DOCUMENT NO:
PDM-ICA110

REVISION:
B

DATE:
8 Dec 2020

Page
38 of 40

**PRINCIPAL INSTRUCTIONS FOR CONTINUED
AIRWORTHINESS FOR STC SA612NE**

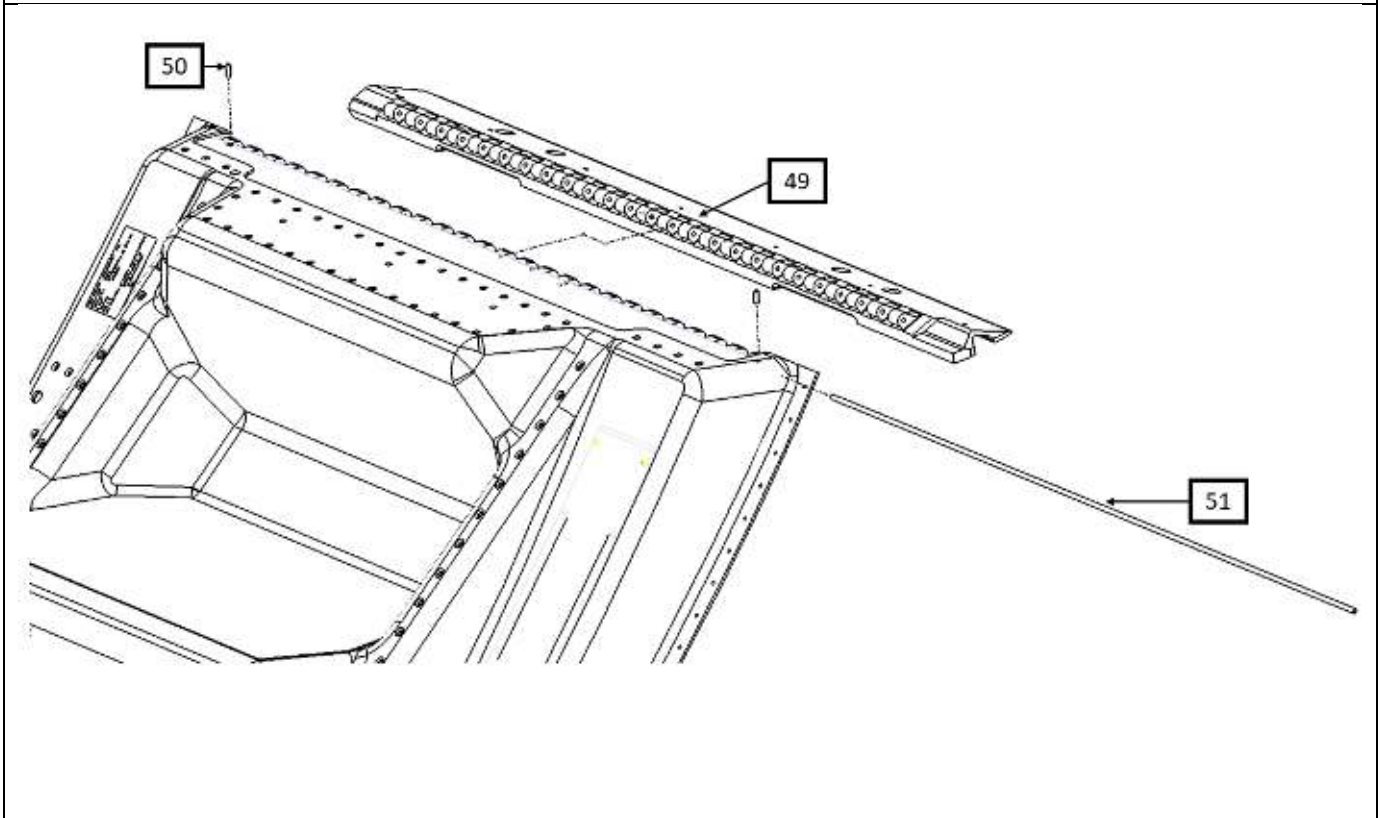
FIG.	ITEM NO.	PART NUMBER	DESCRIPTION	QTY PER ASSY
11.0	-1	B70902	AIRSTAIR DOOR ASSEMBLY	REF
	44	B70923-1	. HINGE DOUBLER	1
	45	B70925-1	. PLATE, HINGE	1
	46	B70911-1	. HINGE	1
	47	1924T43	. SHIM, HINGE	1
			ATTACHING PARTS	
	-48	MS20426AD5-12	.. RIVET	74

(- ITEM NOT ILLUSTRATED)



**PRINCIPAL INSTRUCTIONS FOR CONTINUED
AIRWORTHINESS FOR STC SA612NE**

Figure 12.0 - Fuselage Hinge-Half Installation





DOCUMENT NO:
PDM-ICA110

REVISION:
B

DATE:
8 Dec 2020

Page
40 of 40

PRINCIPAL INSTRUCTIONS FOR CONTINUED
AIRWORTHINESS FOR STC SA612NE

FIG.	ITEM NO.	PART NUMBER	DESCRIPTION	QTY PER ASSY
12.0	-1	B70902	AIRSTAIR DOOR ASSEMBLY	REF
	49	PDMC6FS3649-4	. HINGE HALF ASSEMBLY ATTACHING PARTS	1
	50	NAS561-P3-6	.. SPRING PIN	2
	51	MS20253-P3-2490	.. PIN, HINGE X	1

(- ITEM NOT ILLUSTRATED)