

ULTRA RUGGED I/O SYSTEMS

(1.00 mm) .0394" PITCH



MAX
2.9
A m p s

FEATURES & BENEFITS

- Small form factor
- Four points of contact for a reliable connection and high mating cycles
- Up to 40 positions per row
- Cable-to-cable & cable-to-board solutions
- EMI shielding limits signal degradation and optimizes performance
- Through-hole or surface mount
- 28 & 30 AWG cable



Shown actual size at 20 total positions



Hyperboloid-type contact for extreme high mating cycles



Extreme density with up to 1,450 total I/Os in a 1RU panel (29 cables at 50 total I/Os each)

KEY SPECIFICATIONS (P1PD(X), B1SD(X) & P1M)

PITCH	INSULATOR MATERIAL	CONTACT MATERIAL	SHIELD MATERIAL	PLATING	OPERATING TEMP RANGE	CURRENT RATING	VOLTAGE RATING
1.00 mm	Liquid Crystal Polymer	Beryllium Copper	Zinc Alloy	Au over 50 μm (1.27 μm) Ni	-10 °C to +80 °C (PVC) -40 °C to +125 °C (*Teflon™ Fluoropolymer)	2.9 A per pin (2 pins powered)	253 VAC

*Teflon™ is a trademark of The Chemours Company FC, LLC used under license by Samtec.

(1.00 mm) .0394" PITCH • I/O BOARD MOUNT

P1M	NO. OF POSITIONS	LEAD STYLE	PLATING	D	RA	PIN LENGTH	"X"R
-----	------------------	------------	---------	---	----	------------	------

**-10, -15,
-25, -30**
(Per Row)

-01
= Surface Mount

-02
= Through-hole
(1.57 mm PCB)

-03
= Through-hole
(2.36 mm PCB)

-S
= 30 μ" (0.76 μm)
Gold on contact area,
Matte Tin on tail

-STL
= 30 μ" (0.76 μm)
Gold on contact area,
Tin/Lead on tail

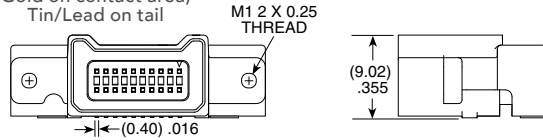
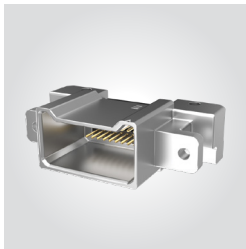
(Leave blank for standard)

-H
= Hot Swap

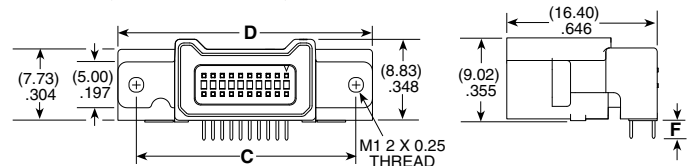
-TR
= Tape & Reel

-FR
= Full Reel
Tape & Reel
(must order max.
quantity per reel;
contact Samtec for
quantity breaks)

P1M
Cable Mates:
B1SD, B1SDT



**P1M-10-01-S-D-RA SHOWN
(SURFACE MOUNT)**



NO. OF POSITIONS	A	B	C	D	E
-10	(9.00) .354	(15.39) .606	(23.75) .935	(27.75) 1.093	(18.80) .740
-15	(14.00) .551	(20.39) .803	(28.75) 1.132	(32.75) 1.289	(23.80) .937
-25	(24.00) .945	(30.39) 1.196	(38.75) 1.526	(42.75) 1.683	(33.80) 1.331
-30	(29.00) 1.142	(35.39) 1.393	(43.75) 1.722	(47.75) 1.880	(38.80) 1.528

LEAD STYLE	F
-02	(1.98) .078
-03	(2.82) .111

Note:
Some lengths, styles and
options are non-standard,
non-returnable.

View complete specifications at: samtec.com?P1M

**P1M-10-02-S-D-RA SHOWN
(THROUGH-HOLE)**

P1M	NO. OF POSITIONS	LEAD STYLE	PLATING	DV	PIN LENGTH	PICK & PLACE OPTION	"X"R
-----	------------------	------------	---------	----	------------	---------------------	------

**-10, -15, -25,
-30**
(Per Row)

-01
= Surface Mount

-02
= Through-hole
(1.57 mm PCB)

-03
= Through-hole
(2.36 mm PCB)

-S
= 30 μ" (0.76 μm)
Gold on contact area,
Matte Tin on tail

-STL
= 30 μ" (0.76 μm)
Gold on contact area,
Tin/Lead on tail

(Leave blank for standard)

-H
= Hot Swap

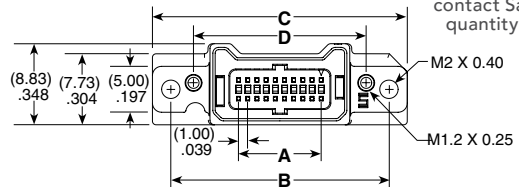
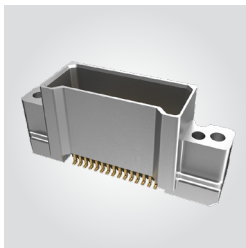
(Leave blank for no pad)

-K
= (8.25 mm) .315"
DIA Polyimide
Film Pick &
Place Pad

-TR
= Tape & Reel

-FR
= Full Reel
Tape & Reel
(must order max.
quantity per reel;
contact Samtec for
quantity breaks)

P1M
Cable Mates:
B1SD, B1SDT



P1M-10-01-S-DV SHOWN

NO. OF POSITIONS	A	B	C	D	E
-10	(9.00) .354	(23.75) .935	(27.75) 1.093	(18.80) .740	(15.22) .599
-15	(14.00) .551	(28.75) 1.132	(32.75) 1.289	(23.80) .937	(20.22) .796
-25	(24.00) .945	(38.75) 1.526	(42.75) 1.683	(33.80) 1.331	(30.22) 1.190
-30	(29.00) 1.142	(43.75) 1.722	(47.75) 1.880	(38.80) 1.528	(35.22) 1.387

Note:
Some lengths, styles and
options are non-standard,
non-returnable.

View complete specifications at: samtec.com?P1M