

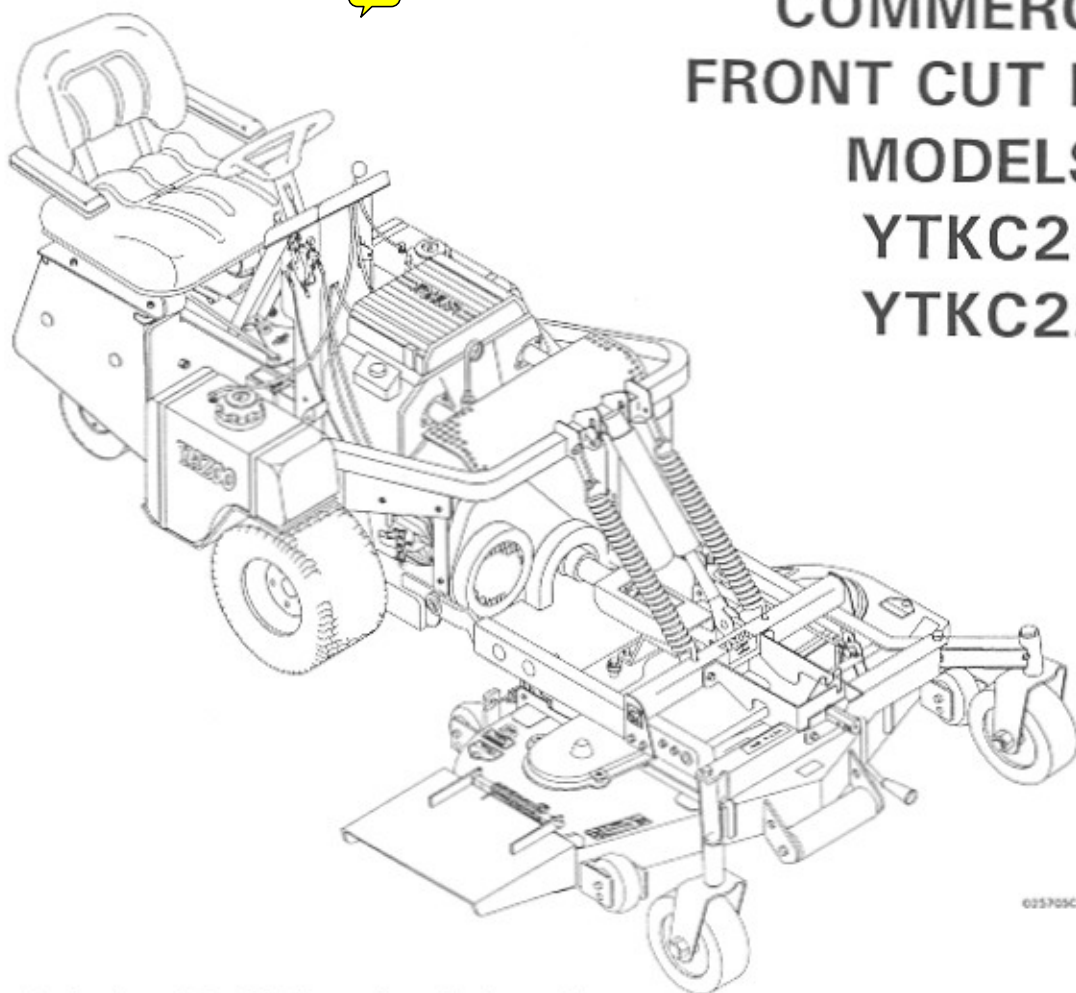


YAZOO

Parts Manual for

COMMERCIAL
FRONT CUT RIDERS

MODELS:
YTKC25
YTKC22



025705C

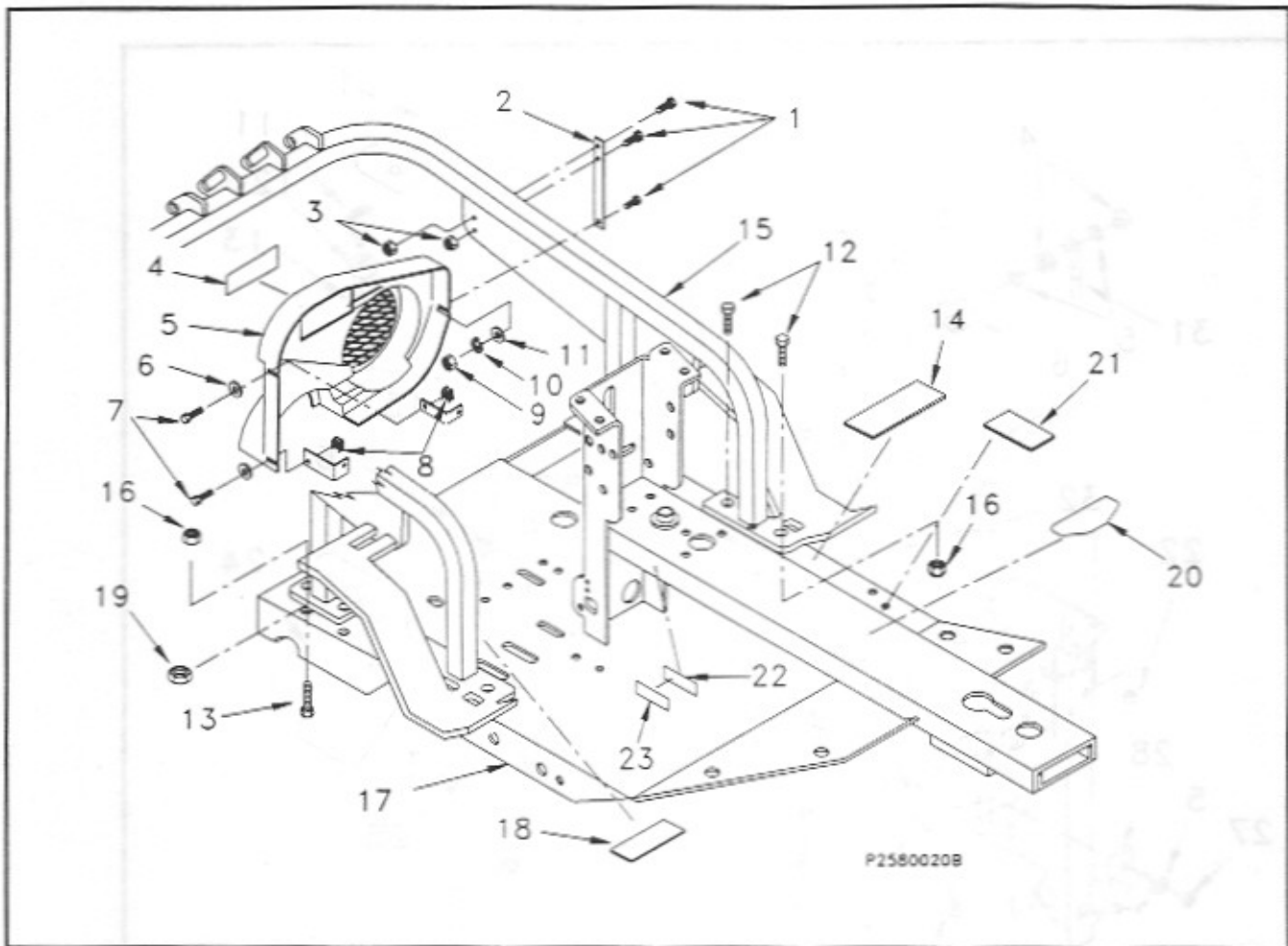
Professional Quality Lawn Care Equipment
since 1945

Yazoo Manufacturing Company's policy is to improve its products whenever it is possible and practical to do so. In a effort to keep pace with changes in technology, Yazoo reserves the right to make changes or improvements at any time without incurring any obligation to make such changes on products previously manufactured.

CONTENTS

Guards & Shields.....3 Belt Guard Frame Assembly	Transmission Drive System.....14 Neutral Switch Bracket Switch Switch Actuator Hydro Pedal Linkage
Dash Panel.....4 Ammeter Hour Meter Inclinator Throttle Control Key Switch Choke Park Brake Lever Decals	Axle Assembly.....16 Axle Assembly Brake Drum Drive Tire & Rim Assembly
Engine Components.....5 Engine Transmission Idler Mount Transmission Belt Pulley Drain Valves	Brake System.....17 Wheel Brake Components Linkages Park Brake Pedal Turn Pedals Park Brake Release
PTO Drive 6 Engine Mount Pulley PTO Belts PTO Shaft Idler Arm Brake Band	Hydraulic System.....20 Mower Deck Lift Components Hydro Transmission Transmission Pulley & Fan Transmission Control Arm Transmission
Steering Components Single Wheel..... 8 Steering Wheel Steering Gears Steering Shaft & Bearings Steering Linkage Wheel & Rim Assembly	Hydrostatic Differential.....22 Tractor Axle Components
Fuel System.....10 Fuel Lines Hose Clamps Fuel Tank & Mounting Components Fuel Filters Fuel Valve	Brake23 Brake Drum & Pads
Exhaust System.....11 Mufflers	Transmission.....24 Transmission Components
Blade Control Lever.....12 Switch Blade Engagement Lever Linkage	Electrical System.....25 Wiring Harness
Operator Seat.....13 Tractor Seat & Mounting Components Seat Switch Rider Weight Battery Mount Bracket	Steering Components Dual Wheel..... 26 Steering Wheel Steering Gears Steering Shaft & Bearings Steering Linkage Wheel & Rim Assembly
	Decals.....27 Safety Messages

GUARD & FRAME



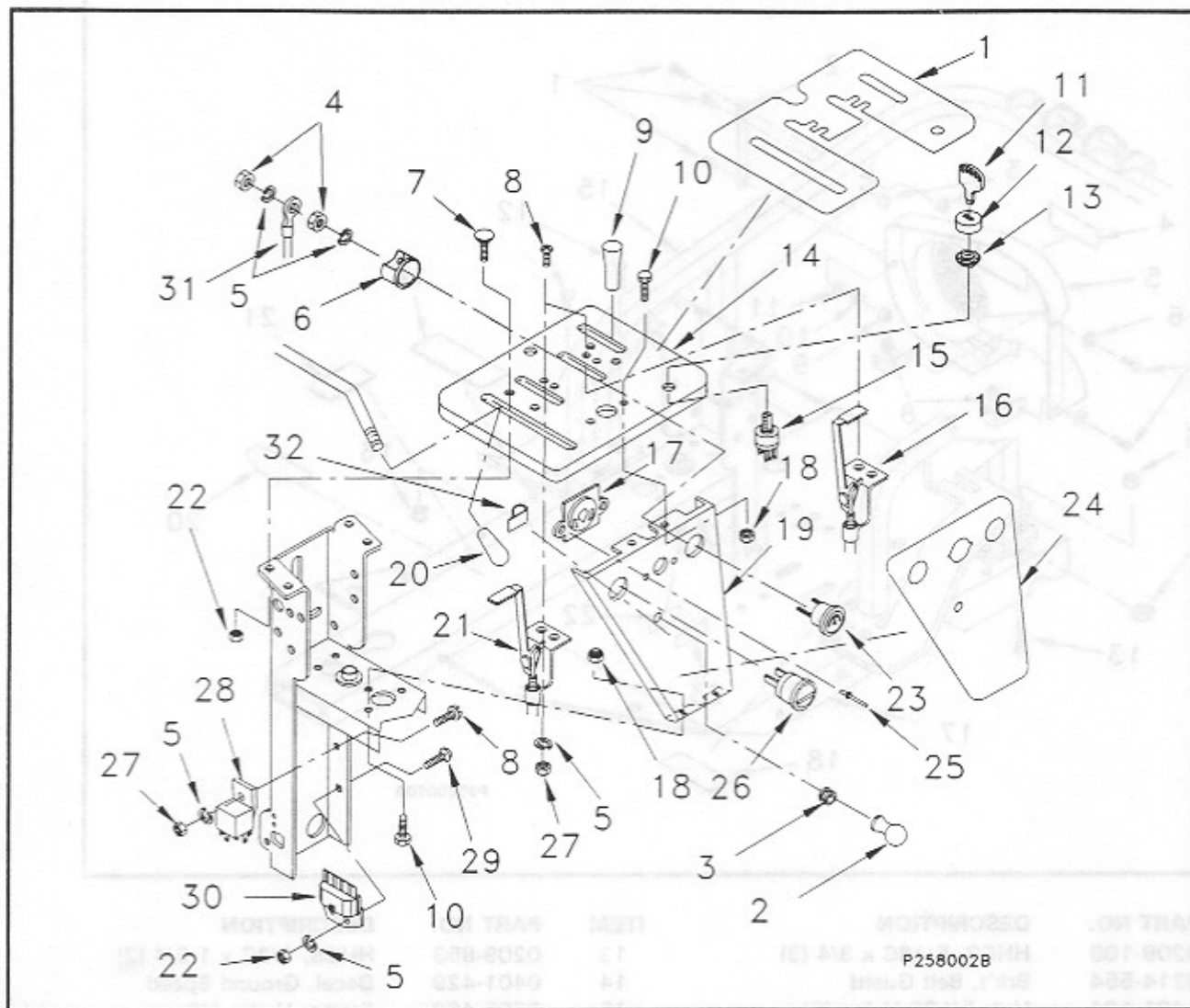
P25800208

ITEM	PART NO.	DESCRIPTION	ITEM	PART NO.	DESCRIPTION
1	0209-108	HHCS, 5/16C x 3/4 (3)	13	0209-853	HHCS, 1/2C x 1-3/4 (2)
2	0214-554	Brk't, Belt Guard	14	0401-429	Decal, Ground Speed
3	1401-134	Nut, 5/16C Nyloc (2)	15	0605-486	Frame, Hydro Lift
4	0401-430	Decal, Front Belt Guard *	16	1401-228	Nut, 1/2 Hex Nyloc (6)
4A	0401-438	Decal, Front Belt Guard **	17	0605-483	Frame
5	0704-382	Guard, Belts Assy.	18	0401-436	Decal, Wheel brake
6	2301-020	Washer, 1/4 Flat (2)	19	1401-150	Nut, 1/2-13 Jam Hex (2)
7	0209-021	HHCS, 1/4C x 3/4 (2)	20	0401-221	Decal, ANSI, B74.1
8	1401-149	Nut, 1/4C Retainer (2)	21	0401-434	Decal, Park Brake
9	1401-020	Nut, 5/16C Hex	22	0401-404	Decal, Serial Plate
10	2301-004	Washer, 5/16 Lock	23	0401-406	Decal, Clear
11	2301-021	Washer, 5/16 Flat			
12	0209-848	HHCS, 1/2C x 1-1/4 (4)			

* For YTKC25 only

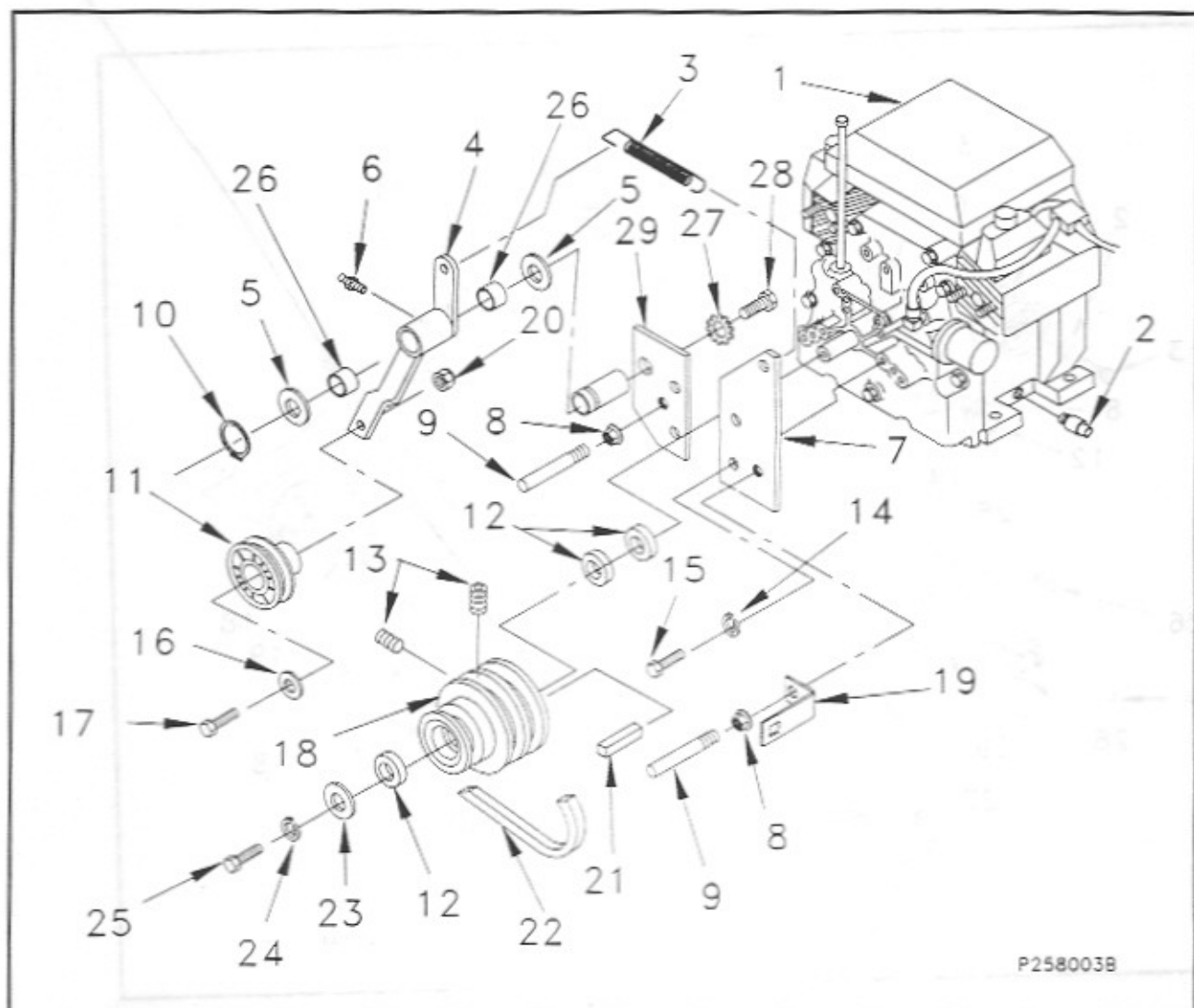
** For YTKC22 only

DASH PANEL



ITEM	PART NO.	DESCRIPTION	ITEM	PART NO.	DESCRIPTION
1	0401-423	Decal, Console	17	0902-001	Inclinometer
2	1104-023	Knob, 5/16-18 Park brake	18	1401-132	Nut, 3/8-16 Nyloc (4)
3	0215-191	Bushing, Snap	19	1613-011	Panel, Instrument Front
4	1401-197	Nut, 10-32 brass Hex (4)	20	1104-022	Knob, Blade Control
5	2301-001	Washer, 3/16 Lock (11)	21	0301-163	Cable, Choke
6		Part of item 23	22	1401-130	Nut, 1/4-20 Hex (5)
7	0209-849	Bolt, 1/4-20 x 5/8 Carr. (4)	23	0706-002	Gage, Ammeter
8	0208-002	Screw, 10-24 x 3/4 (4)	24	0401-428	Decal, Console Front
9		Grip, Part of Valve Control	25	1807-006	Rivet, Pop 1/8 x 5/8 (2)
10	0209-307	HHCS, 3/8-16 x 3/4 (4)	26	0706-003	Gage, Hour Meter
11	1102-067	Key, Molded	27	1401-001	Nut, 10-24 Hex (5)
12	1906-027	Shield, Switch	28	1923-041	Switch, Relay
13	1401-147	Nut, Switch	29	0209-024	Bolt, 1/4-20 x 3/4 Carriage
14	1613-010	Panel, Instrument Top	30	1923-063	Module, Kohler
15	1923-059	Switch, Ignition	31	0811-062	Harness
16	0301-162	Cable, Throttle	32	0307-044	Clip

ENGINE COMPONENTS

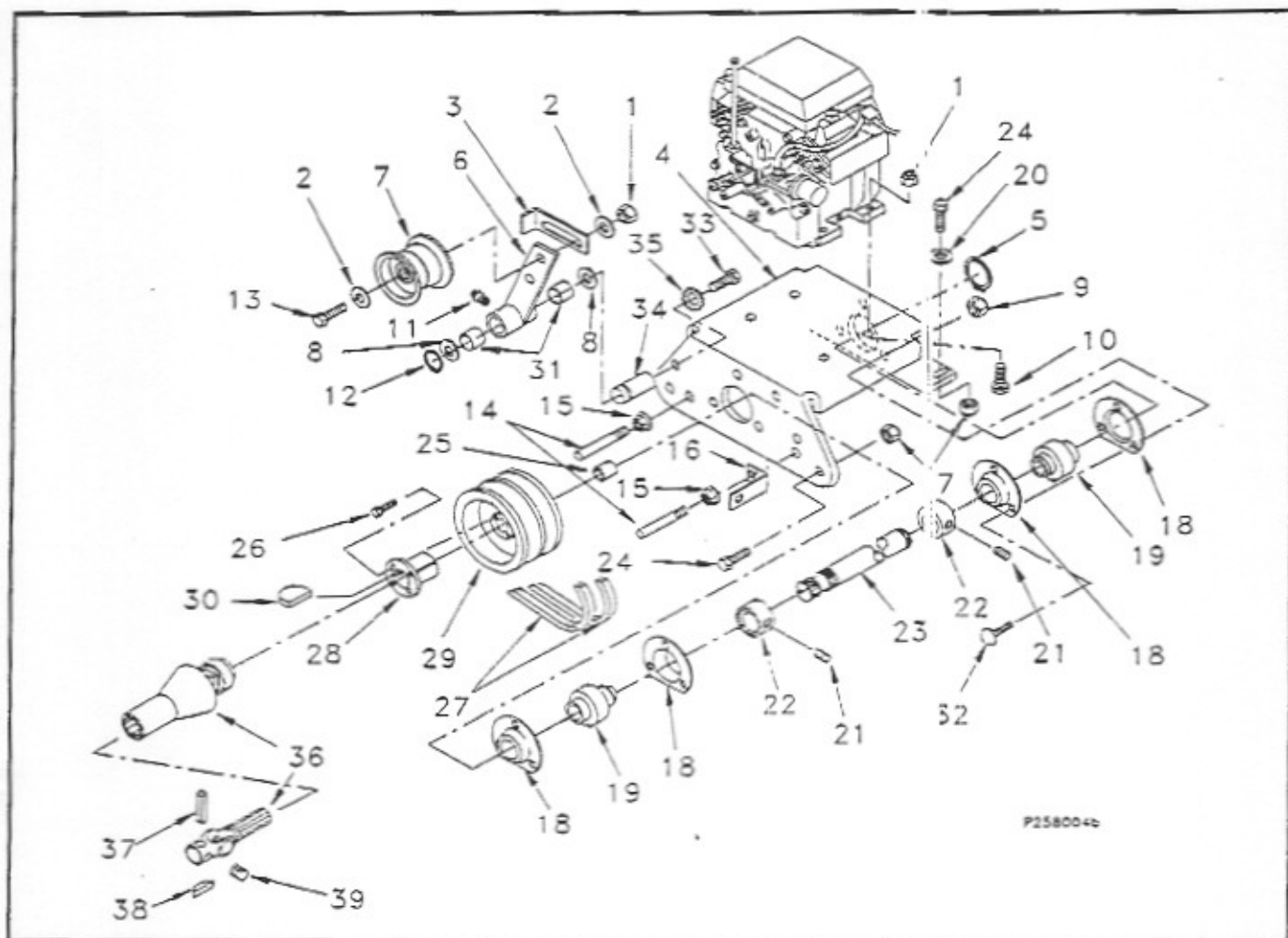


P258003B

ITEM	PART NO.	DESCRIPTION	ITEM	PART NO.	DESCRIPTION
1	E-278	Engine, Kohler CH25S*	15	0209-314	HHCS, 3/8C x 1 (4)
1A	E-277	Engine, Kohler CH22S**	16	2301-022	Washer, 3/8 Flat
2	2201-042	Valve, Oil Drain	17	0209-337	HHCS, 3/8 C x 1-3/4
3	1916-116	Spring, Extension	18	1608-129	Pulley, Engine
4	0102-176	Arm, Trans. Idler	19	0214-571	Brk't, Belt Guide
5	2301-347	Washer, Mach. Bushing (2)	20	1401-132	Nut, 3/8 C Nyloc
6	0603-004	Fitting, Zerk 1/4-20 Straight	21	1102-028	Key, 1/4 Square x 1-1/2
7	1302-091	Mount, Trans. Idler	22	0205-534	Belt, Transmission
8	1401-232	Nut, 5/16-18C Lg. HSWH (2)	23	1913-313	Spacer, Engine Shaft
9	1942-005	Stud, Belt Guide (2)	24	2301-007	Washer, 7/16 Lock
10	1806-154	Ring, 1.0 Dia. Ext. Retaining	25	0209-424	HHCS, 7/16 C x 1-1/4
11	1608-427	Pulley, Idler 3.5 O.D.	26	0204-176	Bearing, 1.x 3/4 (2)
12	1913-312	Spacer, Engine Shaft (3)	27	2301-009	Washer, 1/2 Star
13	1901-009	SHSS, 5/16C x 5/16 (2)	28	0209-480	HHCS, 1/2-13 x 1
14	2301-006	Washer, 3/8 Lock (4)	29	1302-090	Mount, Trans. Idler

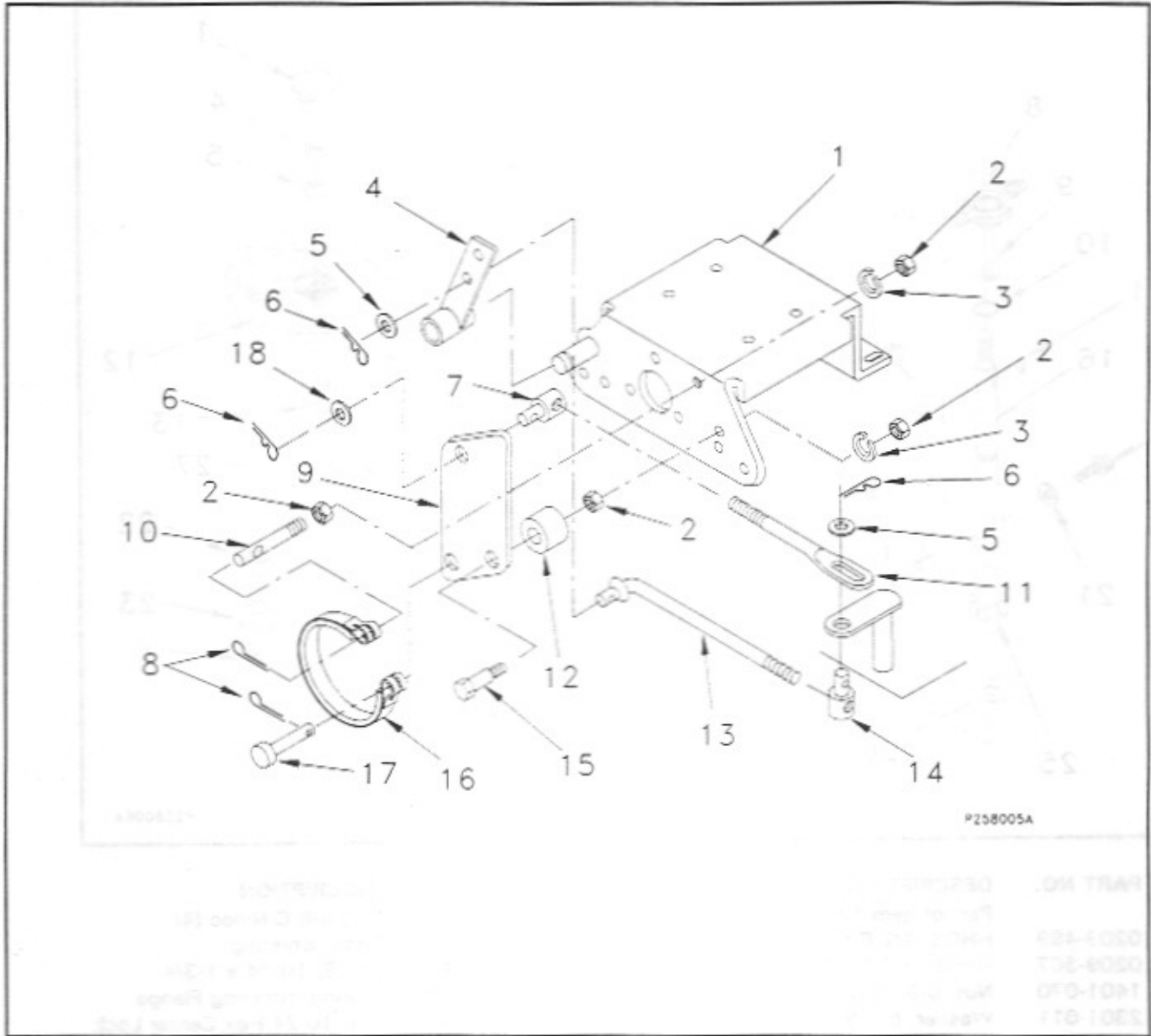
* For YTKC25 only
 ** For YTKC22 only

PTO DRIVE



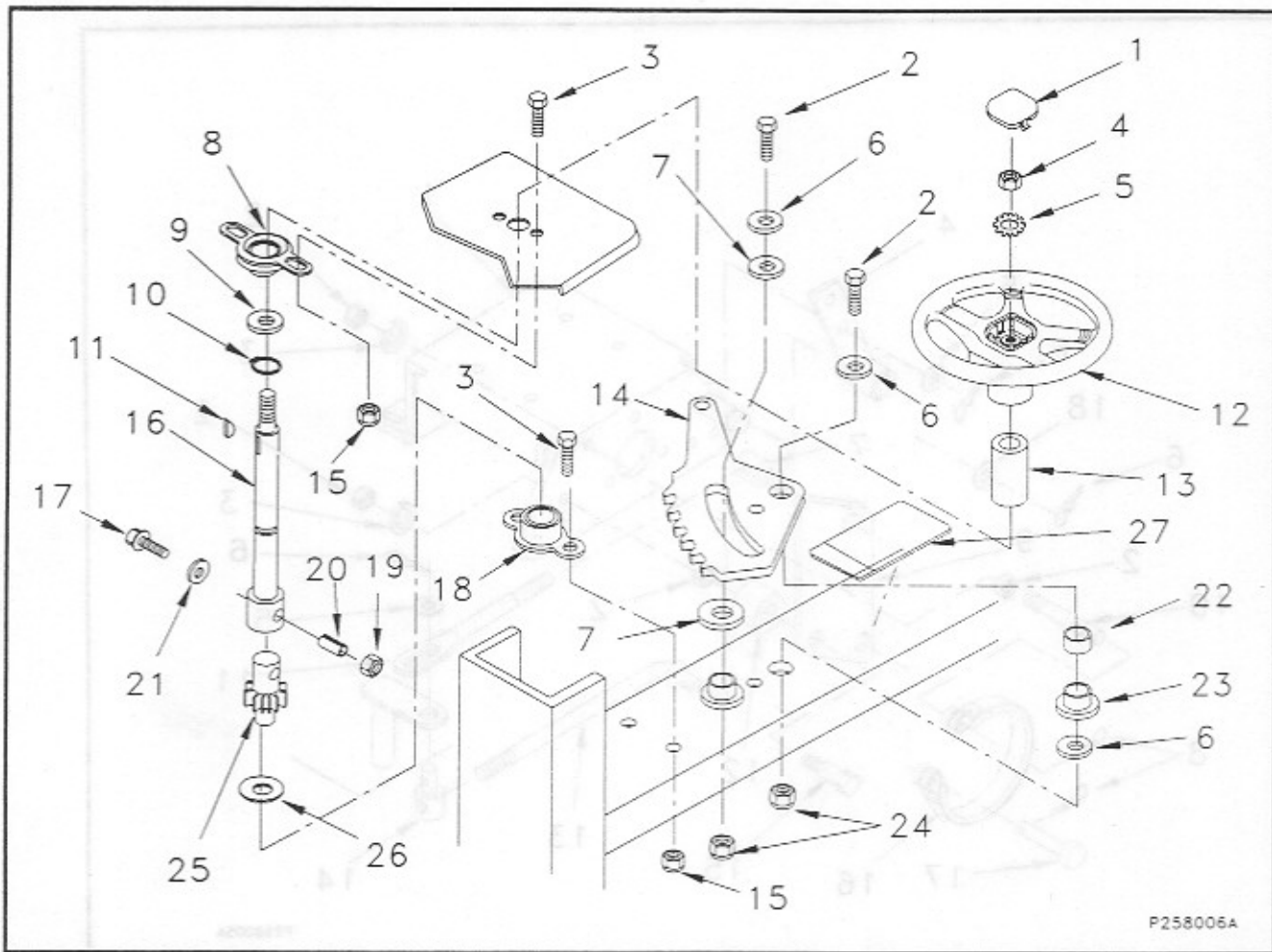
ITEM	PART NO.	DESCRIPTION	ITEM	PART NO.	DESCRIPTION
1	1401-139	Nut, 3/8 C Hex Nyloc (5)	21		Part of item 19
2	2301-022	Washer, 3/8 Flat (2)	22		Part of item 19
3	0214-553	Brk't, Belt Guide	23	1904-323	Shaft, PTO
4	1302-087	Mount, Engine	24	0209-852	HHCS, 1/2 C x 1-1/4 (4)
5	1806-008	Ring, 1" Retaining	25	1913-319	Spacer, 1.25 O.D.x 1.015 I.D.
6	0102-180	Arm, Idler PTO	26	0209-049	HHCS, 1/4-20 x 1 (2)
7	1608-419	Pulley, Idler	27	0205-538	Belt, PTO Set
8	2301-347	Washer, Mach. Bushing (2)	28	0215-175	Bushing, 1" I.D.
9	1401-141	Nut, 5/16 C Nyloc (6)	29	1808-119	Pulley, PTO
10	0209-337	HHCS, 3/8 C x 1-3/4 (4)	30	1102-051	Key, 1/4 x 7/8 Woodruff
11	0603-004	Fitting, Zerk Straight	31	0204-176	Bearing, (2)
12	1806-154	Ring, 1" Dia. Ext. Retaining	32	0211-016	Bolt, 5/16-18 x 1 Carr. (6)
13	0209-350	HHCS, 3/8 x 2-1/2	33	0209-480	HHCS, 1/2-13 x 1
14	1942-005	Stud, Belt Guide (2)	34	1920-006	Stud, Idler Pivot
15	1401-232	Nut, 5/16 C Large HSWH (2)	35	2301-009	Washer, 1/2 Star
16	0214-568	Brk't, Belt Guard	36	1904-322	Shaft, Drive Quick Connect
17	1401-142	Nut, 1/2 C Hex Nyloc (4)	37	1604-185	Pin, Roll 5/16 x 2
18	0603-032	Flangette, 3 Hole (4)	38	1102-051	Key, Woodruff 1/4 x 7/8
19	0204-180	Bearing (2)	39	1901-017	Screw, Set 3/8 C x 3/8
20	2301-025	Washer, 5/8 Flat (2)			

PTO DRIVE



ITEM	PART NO.	DESCRIPTION	ITEM	PART NO.	DESCRIPTION
1	1302-087	Mount, Engine	11	1205-020	Linkage, Brake Blade
2	1401-030	Nut, 3/8 C Hex (4)	12	1913-310	Spacer, 1" O.D. x .39 I.D.
3	2301-006	Washer, 3/8 Lock (2)	13	1205-023	Linkage, Brake Idler
4	0102-180	Arm, Idler PTO	14	0502-030	Rod End, Swivel 3/8 C
5	2301-022	Washer, 3/8 Flat (2)	15	0209-337	HHCS, 3/8 C x 1-3/4
6	0309-030	Clip, Hair Pin (3)	16	0217-020	Band, Brake
7	0502-031	Rod End, Swivel 3/8 C	17	1604-192	Pin, Clevis 5/8 x 1-1/4
8	1604-193	Pin, Cotter 1/8 x 3/4 (2)	18	2301-359	Washer, 3/8 Flat SAE
9	0102-172	Arm, Brake			
10	1604-103	Stud, Brake Band			

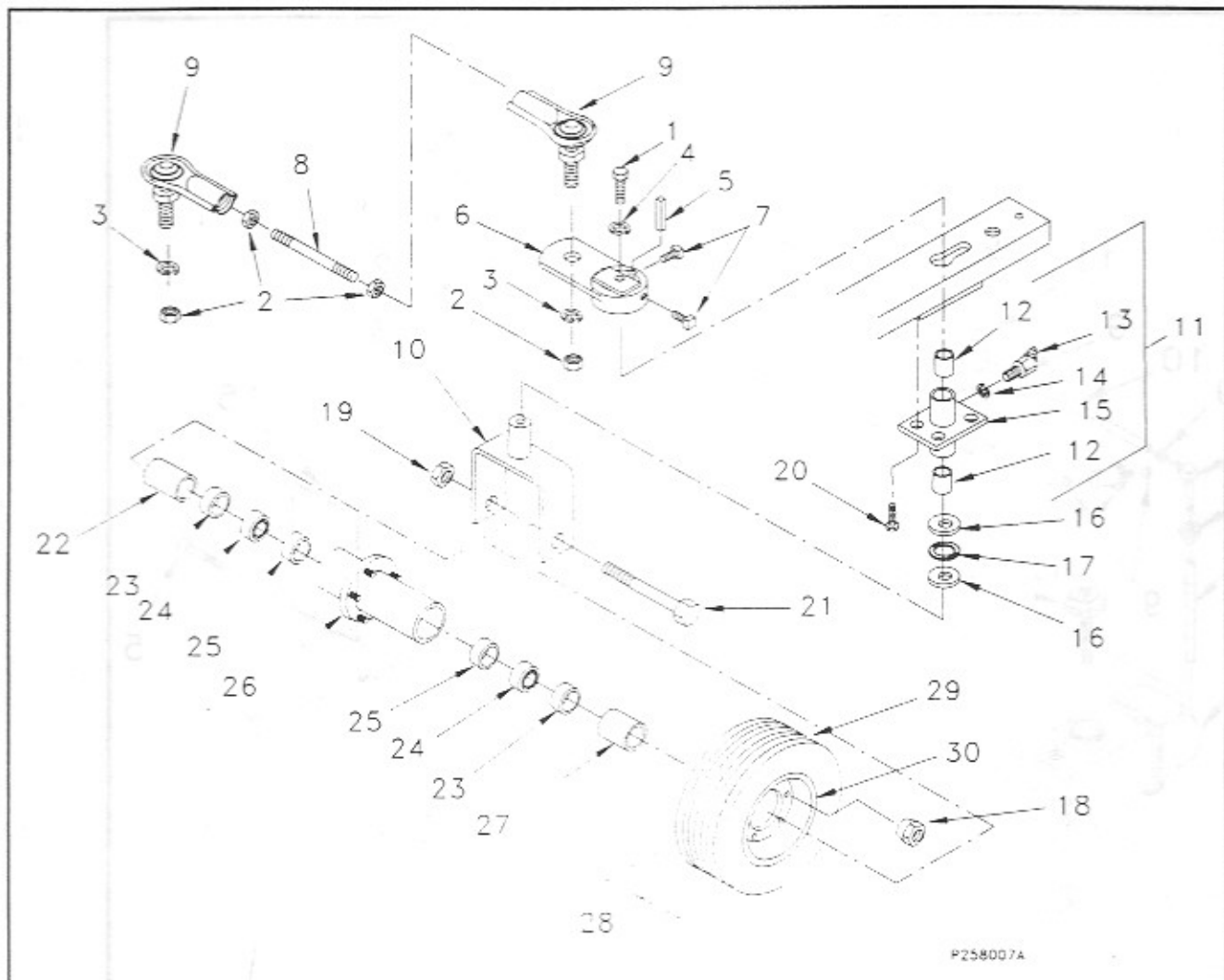
STEERING COMPONENTS



P258006A

ITEM	PART NO.	DESCRIPTION	ITEM	PART NO.	DESCRIPTION
1		Part of item 12	15	1401-132	Nut, 3/8 C Nyloc (4)
2	0209-499	HHCS, 1/2 C x 2 (2)	16	1904-311	Shaft, Steering
3	0209-307	HHCS, 3/8 C x 3/4 (4)	17	0208-011	HHCS, 10-24 x 1-3/4
4	1401-070	Nut, 5/8-18 Side Lock Hex	18	0204-179	Bearing, Steering Flange
5	2301-011	Washer, 5/8 Star	19	1401-099	Nut, 10-24 Hex Center Lock
6	2301-335	Washer, 1/2 ID x 1-3/4 OD(3)	20	1604-163	Pin, Roll 8mm x 32mm
7	2301-336	Washer, 1.016 I.D.x2 O.D.(2)	21	2301-296	Washer, 3/16 Flat
8	0204-161	Bearing, Steering Flange	22	1913-287	Spacer, Steering Gear Pivot
9	2301-028	Washer, 3/4 Flat	23	0215-181	Bushing, Flanged
10	1806-157	Ring, Retaining .689 ID	24	1401-228	Nut, 1/2 C Nyloc (2)
11	1102-013	Key, 3/16 x 3/4 Woodruff	25	0702-150	Gear, Steering Pinion
12	2303-014	Wheel, Steering	26	2301-334	Washer, Mach. Bushing
13	1814-006	Foam, Steering	27	0401-435	Decal, Warning
14	0702-154	Gear, Steering			

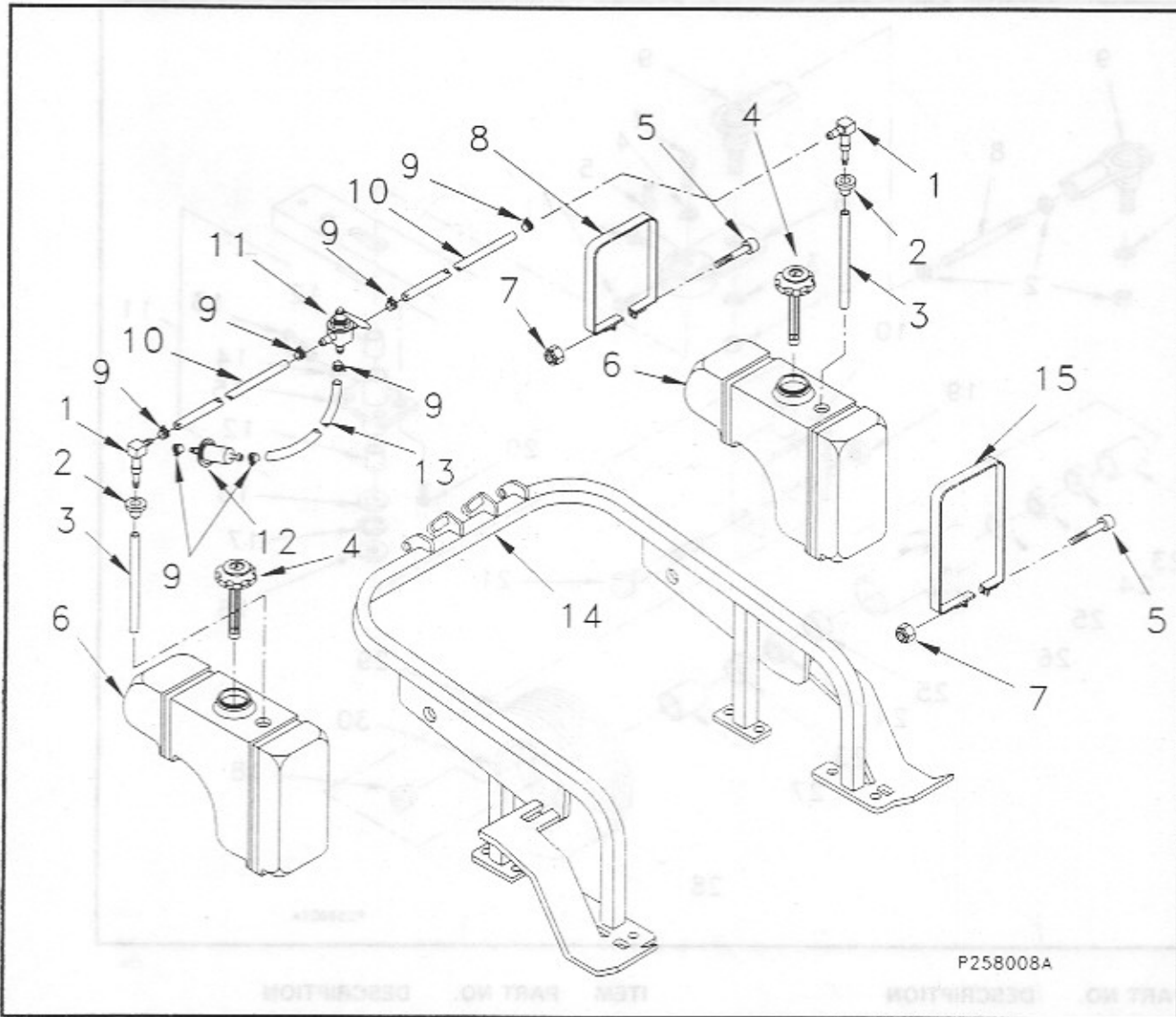
STEERING COMPONENTS SINGLE WHEEL



P258007A

ITEM	PART NO.	DESCRIPTION	ITEM	PART NO.	DESCRIPTION
1	0209-314	HHCS, 3/8 C x 1	17	0204-078	Bearing, 1/2 Thrust
2	1401-050	Nut, 1/2 F Hex	18	1401-061	Nut, 7/16 Lug (5)
3	2301-008	Washer, 1/2 Lock (2)	19	1401-081	Nut, 3/4 F Jam
4	2301-006	Washer, 3/8 Lock (4)	20	0209-851	HWST, 1/2 C x 1 (4)
5	1102-065	Key, 3/8 x 1 Square	21	0103-122	Axle, Rear Wheel
6	0311-098	Arm, Steering	22	1913-216	Spacer, 1 O.D. x 1-1/2 Long
7	1901-034	Screw, Set 3/8 C x 3/4 (2)	23	1902-005	Spacer, Steering Hub (2)
8	1205-022	Linkage, Steering Rod	24	0204-034	Bearing, (2)
9	0502-026	End Rod, 1/2 F RH Thd. (2)	25	0312-008	Race, Bearing (2)
10	2501-061	Yoke, Steering	26	0807-038	Hub, Wheel
11	0807-045	Hub, Steering Assembly	27	1913-074	Spacer, 1.O.D. x 1-3/16 Long
12	0215-101	Bushing, Steering (2)	28	2305-018	Wheel, Assembly
13	0603-011	Fitting, Zerk 1/4-20 45 degree	29	2003-067	Tire, 16 x 6.5
14	2301-003	Washer, 1/4 Lock	30	1805-012	Rim
15	0806-347	Flange, Rear Steering			
16	2301-097	Washer, Thrust (2)			

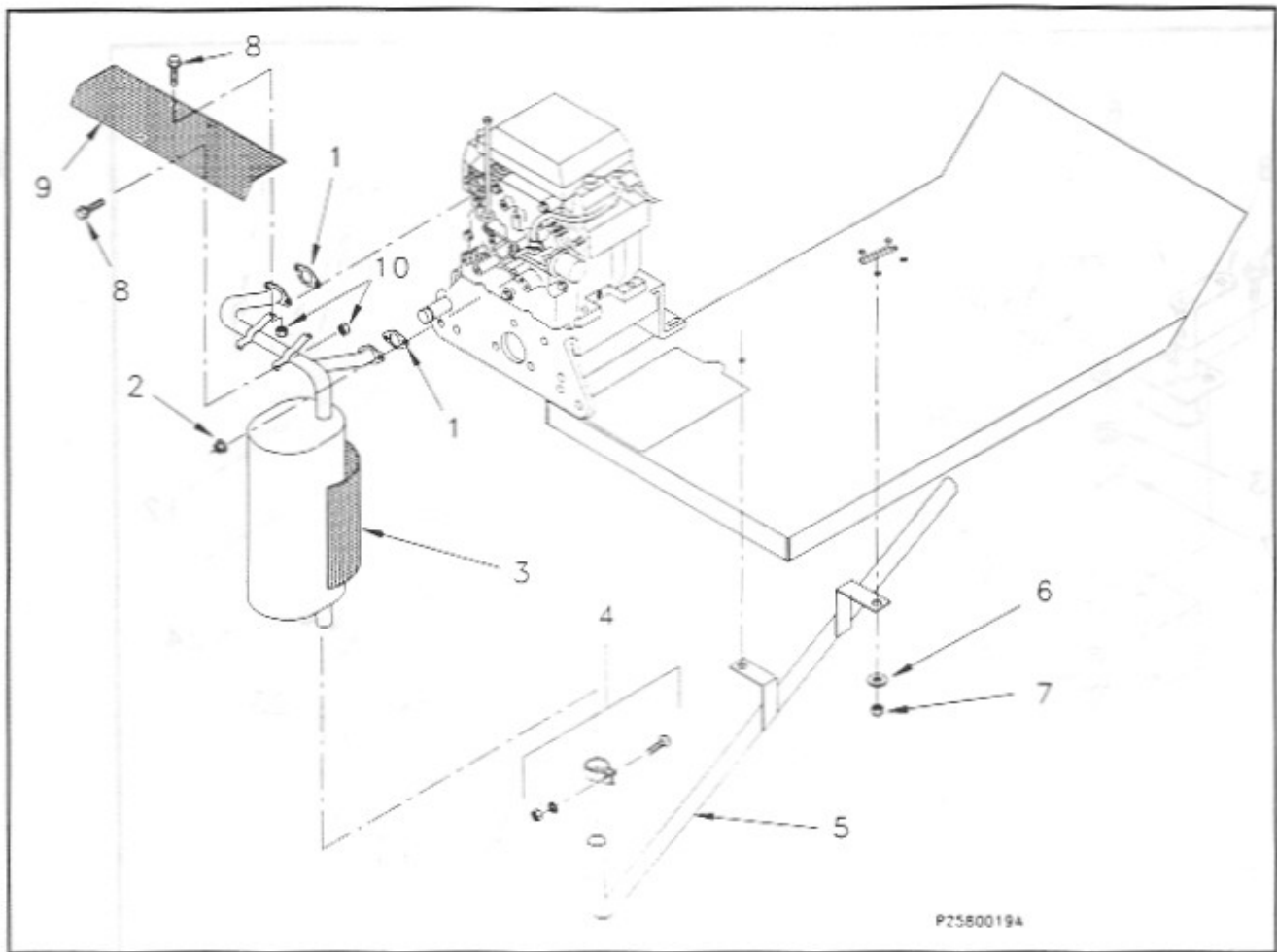
FUEL SYSTEM



P258008A

ITEM	PART NO.	DESCRIPTION	ITEM	PART NO.	DESCRIPTION
1	0101-161	Fitting, Tank (2)	10	0812-108	Hose, Fuel Line 23" (2)
2	0215-179	Fitting, Tank Bushing (2)	11	2201-030	Valve, Fuel
3	2018-007	Tube, Fuel Intake (2)	12	0610-011	Filter, Fuel
4	0303-091	Cap, Fuel Tank W/Gage(2)	13	0812-112	Hose, Fuel Line 15"
5	0209-097	Bolt, 1/4-20 x 2 SHCS (4)	14	0605-486	Lift, Frame
6	2001-030	Fuel, Tank (2)	15	1918-032	Strap, Tank Long (2)
7	1401-133	Nut, 1/4-20 Nyloc (4)			
8	1918-031	Strap, Tank Short (2)			
9	0307-026	Clamp, Hose (6)			

EXHAUST SYSTEM



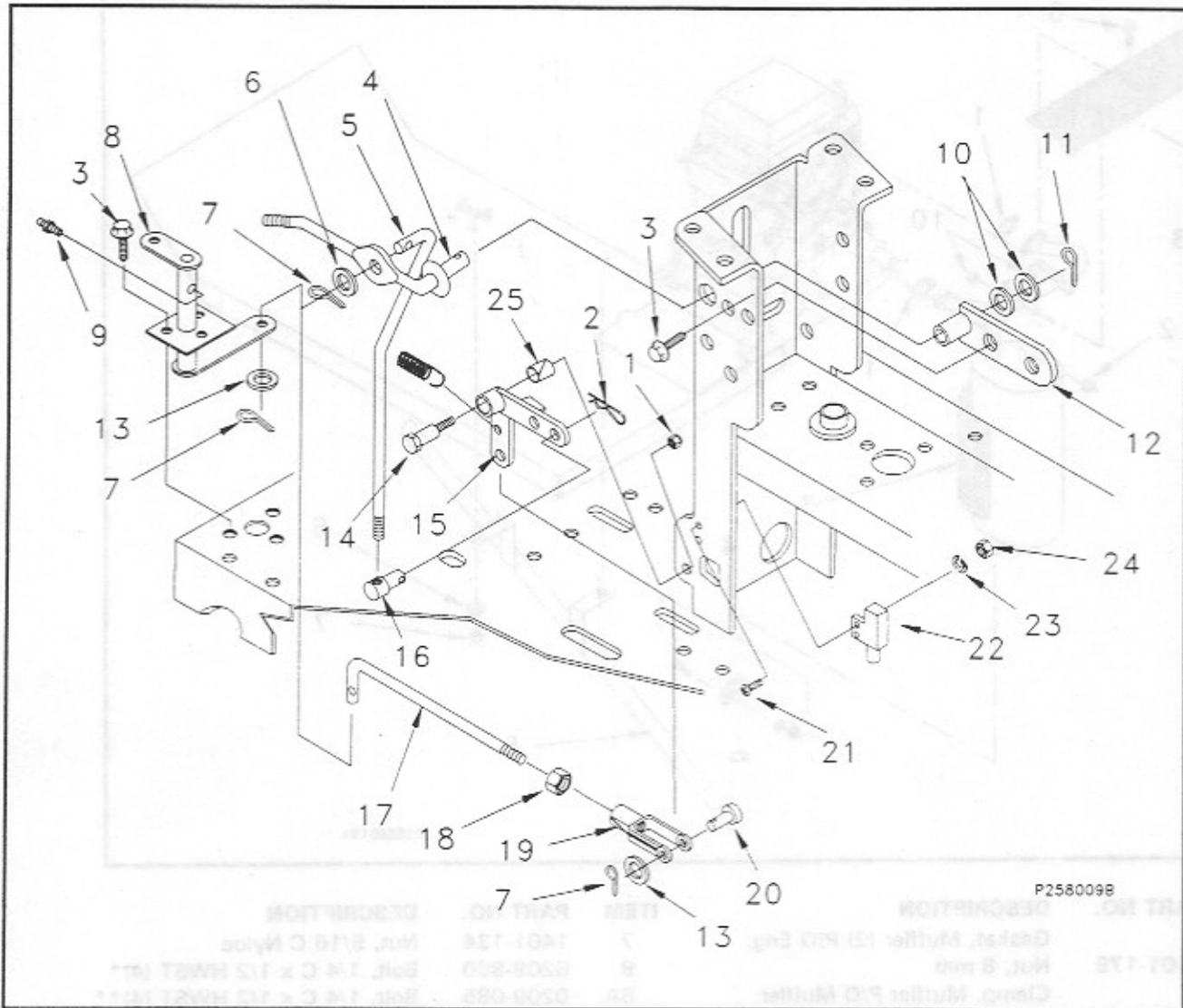
P2580019A

ITEM	PART NO.	DESCRIPTION	ITEM	PART NO.	DESCRIPTION
1		Gasket, Muffler (2) P/O Eng.	7	1401-134	Nut, 5/16 C Nyloc
2	1401-179	Nut, 8 mm	8	0209-860	Bolt, 1/4 C x 1/2 HWST (4)*
4		Clamp, Muffler P/O Muffler	8A	0209-085	Bolt, 1/4 C x 1/2 HWST (4)**
3	1304-029	Muffler, Kohler	9	1906-029	Shield, Heat* (Plated)
5	1615-018	Pipe, Tail Assembly	9A	1606-030	Shield, Heat** (painted)
6	2301-021	Washer, 5/16 Flat	10	1401-152	Nut, 1/4 C Hex Cenlok (4)

* For YTKC25 only

** For YTKC22 only

BLADE CONTROL LEVER

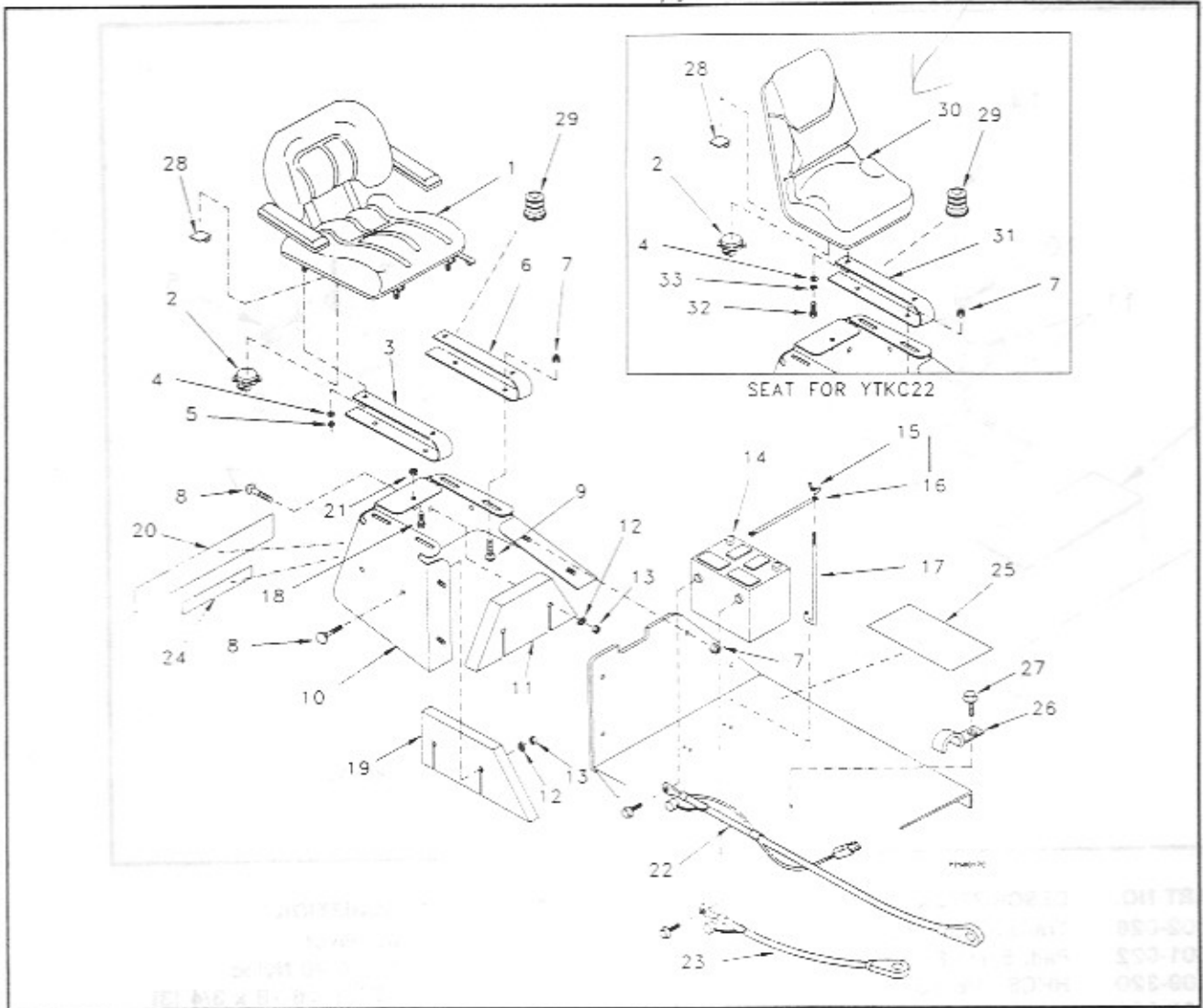


P2560098

ITEM	PART NO.	DESCRIPTION	ITEM	PART NO.	DESCRIPTION
1	1401-132	Nut, 3/8-16 NC Nyloc	14	0212-035	Bolt, 1/2" Dia. Shoulder
2	0309-030	Hairpin	15	0102-177	Arm, Blade Bellcrank
3	0209-080	HWST, 5/16-18 x 3/4 (5)	16	0502-029	Rod End, Swivel, 5/16-18
4	1201-116	Lever, Blade Control	17	1205-027	Linkage, Blade Control
5	1205-026	Linkage, Blade Control	18	1401-030	Nut, 3/8-16 Hex
6	2301-052	Washer, 5/16 SAE Flat	19	2501-030	Yoke, 3/8-16
7	1604-193	Pin, 1/8 x 3/4 Cotter (3)	20	1604-192	Pin, 3/8 x 1-1/4 Clevis
8	1201-121	Counter Lever	21	0208-002	Screw, 10-24 x3/4 (2)
9	0603-004	Fitting, Grease	22	1923-061	Switch, PTO
10	2301-356	Washer, Mach. Bushing (2)	23	2301-001	Washer, 3/16 Lock (2)
11	1604-002	Pin, 3/32 x 1 Cotter	24	1401-001	Nut, 10-24 Hex (2)
12	1617-015	Pivot, Blade Lever	25	0204-183	Bearing, Nyliner
13	2301-022	Washer, 3/8 Flat (2)			

OPERATOR SEAT

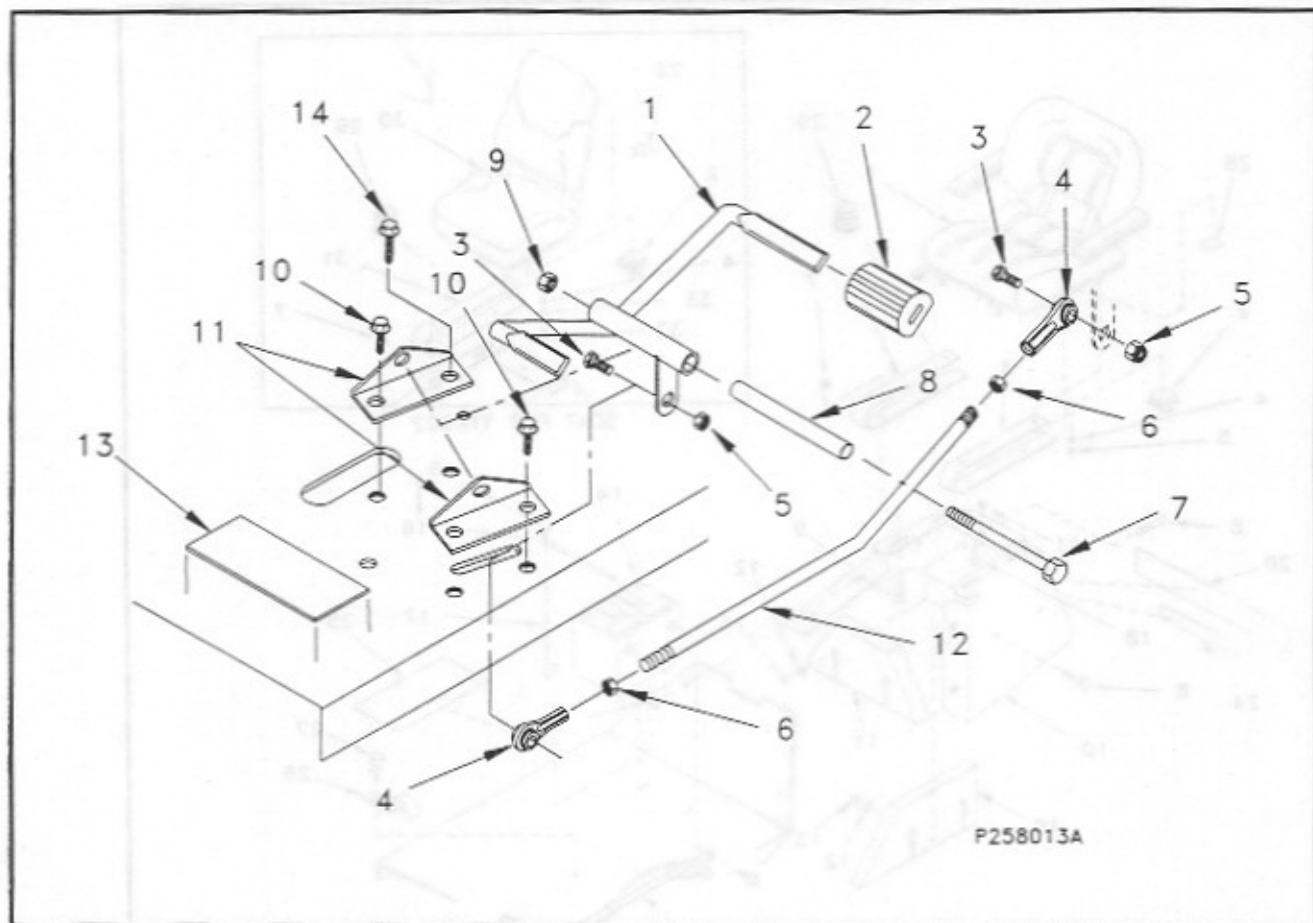
*1105-175
Arm rests for old seat ~~Kit~~
for older make*



ITEM	PART NO.	DESCRIPTION
1	1903-027	Seat, Tractor With Arms
2	1923-060	Switch, Seat
3	1916-200	Spring, Seat RH
4	2301-021	Washer, 5/16 Flat (4)
5	1401-134	Nut, 5/16-18 Nyloc (4)
6	1916-199	Spring, Seat LH
7	1401-228	Nut, 1/2-13 Hex Nyloc (8)
8	0211-012	Bolt, 5/8-18 x 3 Carriage (6)
9	0211-013	Bolt, 1/2-13 x 1-1/2 Carr.(4)
10	0704-383	Guard, Rear Wheel
11	2304-014	Weight, Rear 58 Lbs.
12	2301-010	Washer, 5/8 Lock (6)
13	1401-238	Nut, 5/8-11 Hex (6)
14		Battery 12 Volt (Not supplied)
15	1401-024	Wing Nut, 5/16-18 Toploc (2)
16	1808-340	Rod, Battery Hold Down
17	1808-339	Rod, Battery Tie Down (2)

ITEM	PART NO.	DESCRIPTION
18	0209-848	HHCS, 1/2-13 x 1-1/4
19	2304-015	Weight, Side 52 Lbs.(2)
20	0401-433	Decal, YAZOO
21	1401-150	Nut, 1/2-13 Jam hex
22	0301-165	Cable, Pos. Battery
23	0301-166	Cable, Neg. Battery
24	0401-118	Decal, Made In U.S.A.
25	1601-021	Pad, Foot 6 x 12
26	0307-052	Clamp, Half Clip
27	0209-080	HWST, 5/16-18 x 3/4
28	0307-044	Clip, Stick-on
29	0216-008	Bumper, Seat Support (2)
30	1903-026	Seat, Tractor
31	1916-194	Spring, Seat (2)
32	0209-108	HHCS, 5/16 C x 3/4 (4)
33	2301-004	Washer, 5/16 Lock (4)

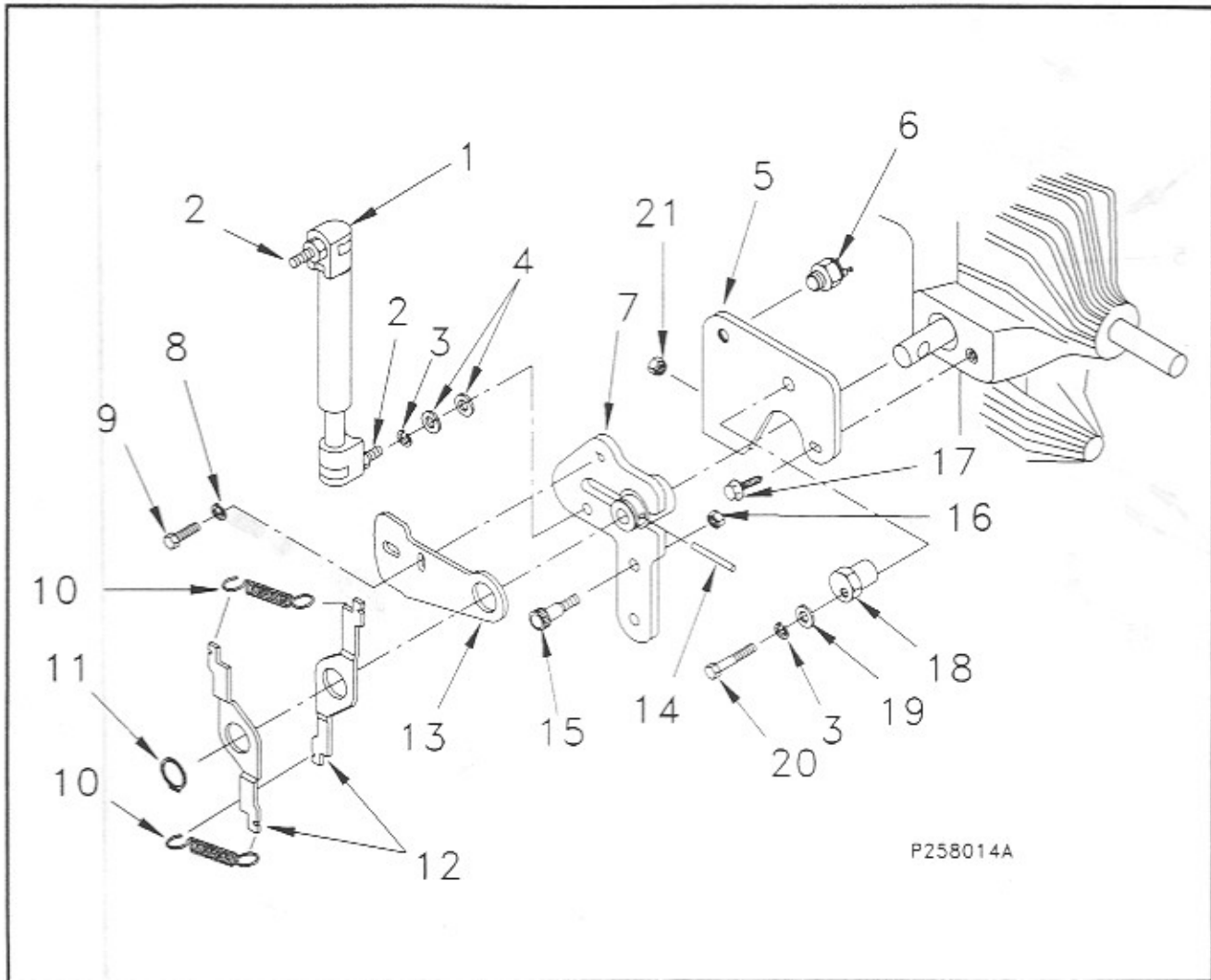
TRANSMISSION DRIVE SYSTEM



P258013A

ITEM	PART NO.	DESCRIPTION	ITEM	PART NO.	DESCRIPTION
1	1602-026	Transmission Pedal	8	2005-076	Tube, Pivot
2	1601-022	Pad, 5-1/4 Foot Pedal	9	1401-133	Nut, 1/4-20 Nyloc
3	0209-320	HHCS, 3/8-16 x 1-1/4 (2)	10	0209-080	HWST, 5/16-18 x 3/4 (3)
4	0502-028	End Rod, 3/8-24 (2)	11	0214-576	Brk't, Trans. Pedal Mount (2)
5	1401-132	Nut, 3/8-16 Nyloc (2)	12	1205-024	Linkage, Transmission
6	1401-032	Nut, 3/8-24 Hex (2)	13	1601-021	Pad, Foot 4-3/4 x 6
7	0209-850	HHCS, 1/4 C x 5-1/2	14	0209-088	HWST, 5/16 C x 1

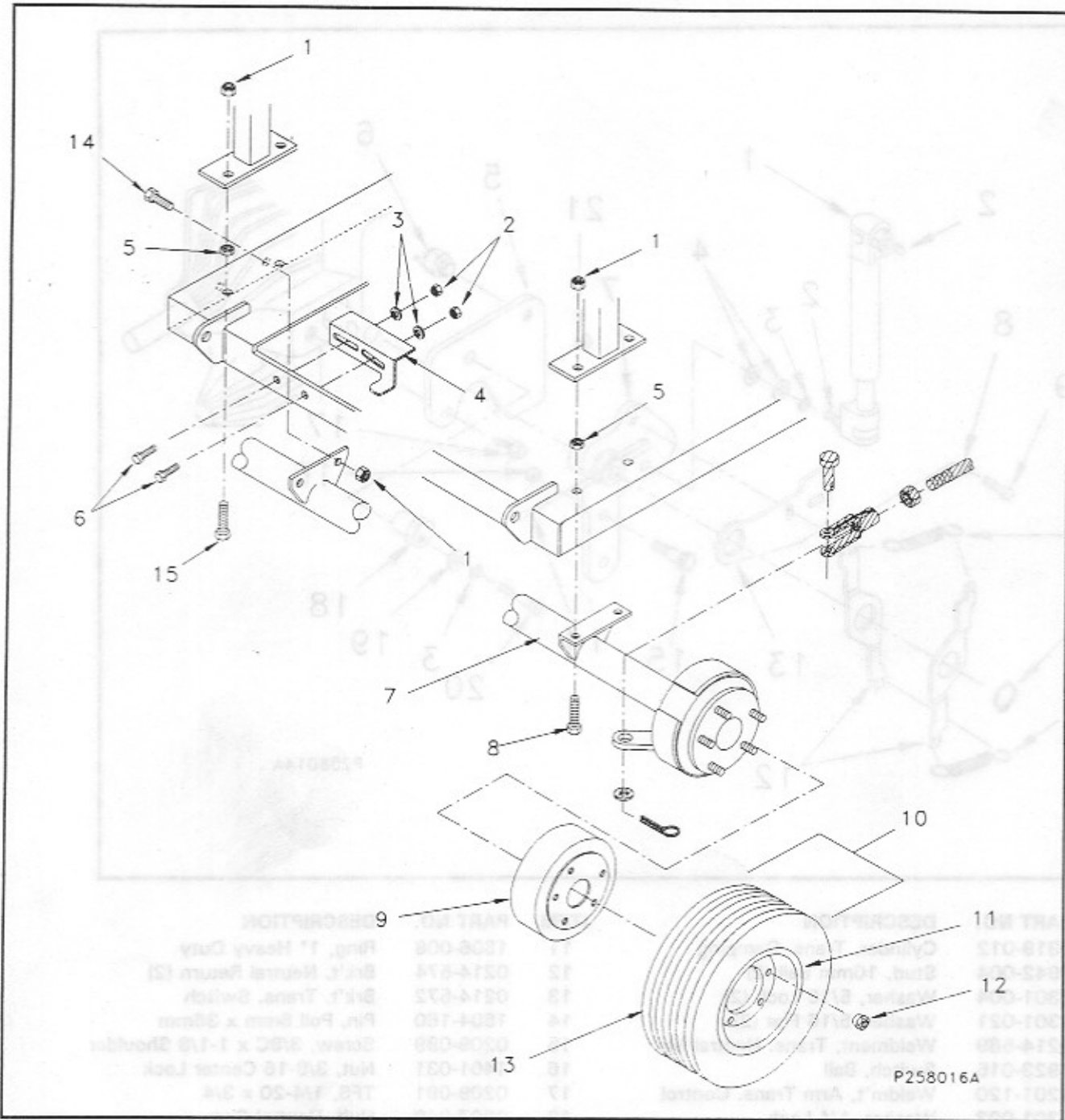
TRANSMISSION DRIVE SYSTEM



P258014A

ITEM	PART NO.	DESCRIPTION	ITEM	PART NO.	DESCRIPTION
1	0319-012	Cylinder, Trans. Damping	11	1806-008	Ring, 1" Heavy Duty
2	1942-004	Stud, 10mm Ball (2)	12	0214-574	Brk't, Neutral Return (2)
3	2301-004	Washer, 5/16 Lock (2)	13	0214-572	Brk't, Trans. Switch
4	2301-021	Washer, 5/16 Flat (2)	14	1604-160	Pin, Poll 6mm x 36mm
5	0214-569	Weldment, Trans. Neutral Mt.	15	0209-099	Screw, 3/8C x 1-1/8 Shoulder
6	1923-015	Switch, Ball	16	1401-031	Nut, 3/8-16 Center Lock
7	1201-120	Weldm't, Arm Trans. Control	17	0209-081	TFS, 1/4-20 x 3/4
8	2301-003	Washer, 1/4 Lock	18	0807-049	Hub, Neutral Cam
9	0209-854	HHCS, 1/4-28 x 3/8	19	2301-052	Washer, 5/16 Flat SAE
10	1916-056	Spring, Trans. Neutral (2)	20	0209-857	HHCS, 5/16-24 x 2
			21	1401-134	Nut, 5/16-18 Nyloc

AXLE ASSEMBLY

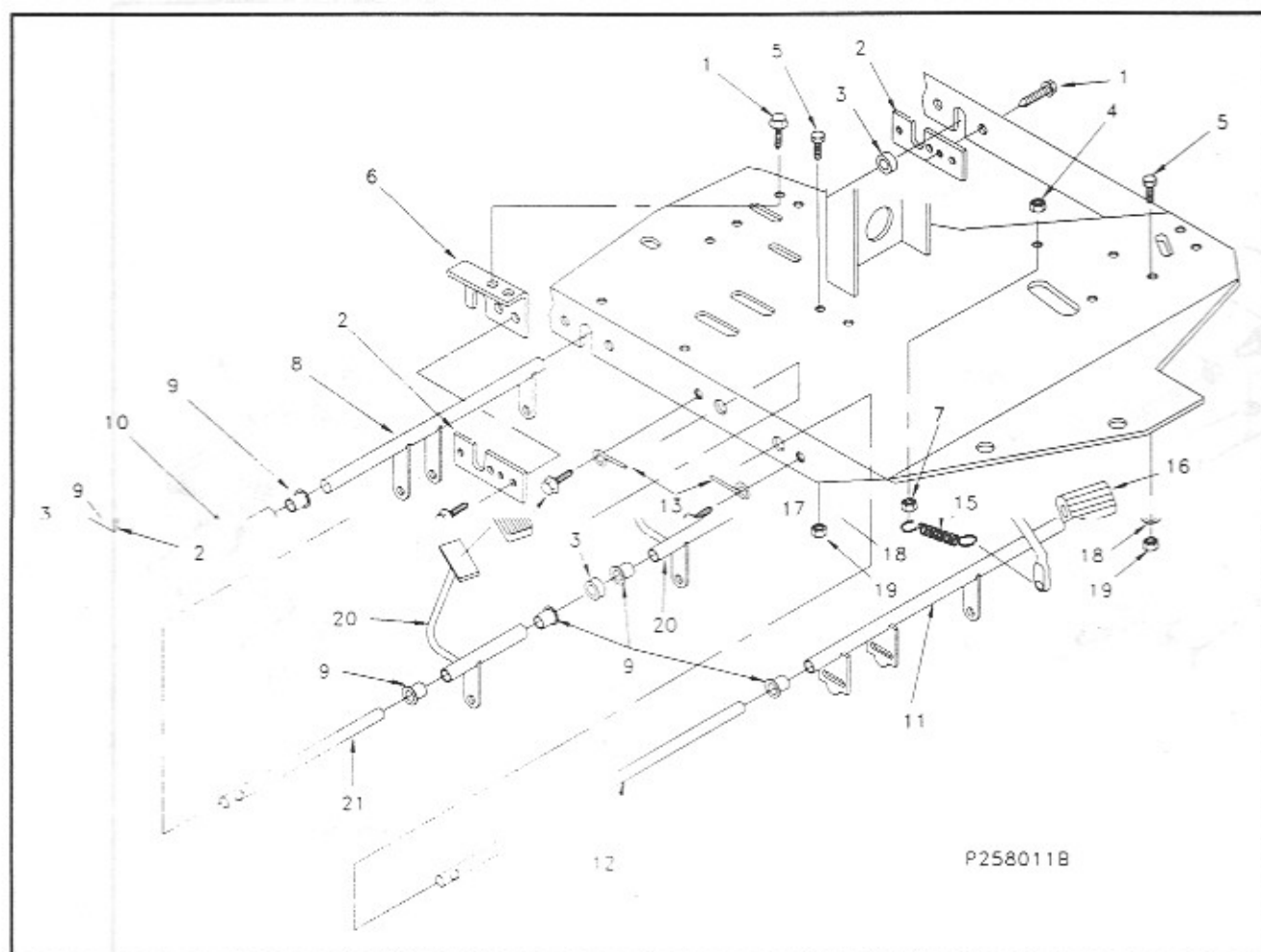


ITEM	PART NO.	DESCRIPTION	ITEM	PART NO.	DESCRIPTION
1	1401-228	Nut, 1/2-13 Hex Nyloc (4)	8	0209-853	HHCS, 1/2 C x 1-3/4 (42)
2	1401-133	Nut, 1/4-20 Hex Nyloc (2)	9	0217-018	Housing, Brake (2)
3	0215-192	Bushing, Pivot (2)	10	2305-022	Wheel, Assembly (2)
4	1201-117	Lever, Tow Valve	11	1805-026	Rim, Beaded Front (2)
5	1401-150	Nut, 1/2-13 Jam Hex (4)	12	1401-061	Nut, 7/16 C Lug (10)
6	0209-049	Bolt, 1/4-20 x 1 (2)	13	2003-058	Tire, 18 x 9.5 (2)
7	2006-082	Transaxle, Assembly	14	0209-852	HHCS, 1/2 C x 1-1/2 (2)

16

2003 - 078

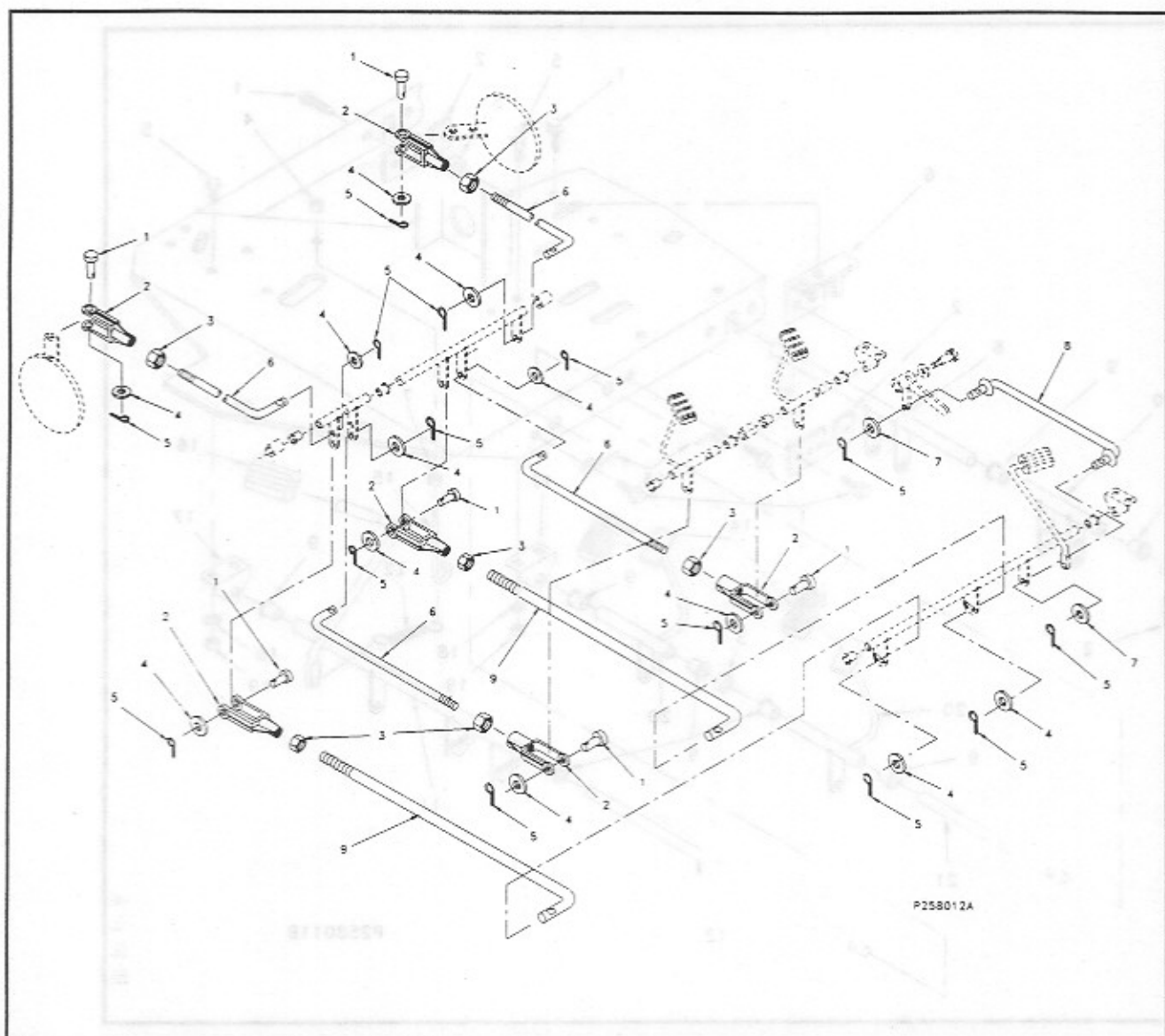
BRAKE PEDAL LINKAGES



P2580118

ITEM	PART NO.	DESCRIPTION	ITEM	PART NO.	DESCRIPTION
1	0209-080	TFS, 5/16-18 x 3/4 (10)	13	1604-175	Pin, Loop (2)
2	0214-551	Brk't, Brake Mount (3)	14	1601-001	Pad, Brake Pedal (2)
3	1913-307	Spacer, 1"OD x 5/8"ID (3)	15	0212-036	Bolt, Eye 1/4-20 x 3
4	1401-133	Nut, 1/4 -20 Nyloc	16	1601-022	Pad, 5-1/4 Foot Pedal
5	0209-020	HHCS, 5/16-18 x 7/8 (4)	17	0214-578	Brk't, Park Brake Pedal (2)
6	1302-081	Mount, Brake Engage	18	2301-052	Washer, 5/16 Flat SAE (4)
7	1401-010	Nut, 1/4 C Hex	19	1401-134	Nut, 5/16-18 Nyloc (4)
8	0217-031	Weldm't, Brake Counter Shaft	20	1602-031	Weldm't, Brake Pedal (2)
9	0204-173	Bushing, 5/8 Garlock (8)	21	1904-314	Shaft, Brake Pivot
10	1617-016	Pivot, Blade Linkage	22	1916-116	Spring, Extension
11	1602-027	Weldm't, Park Brake Pedal			
12	1904-308	Shaft, Park brake Pivot			

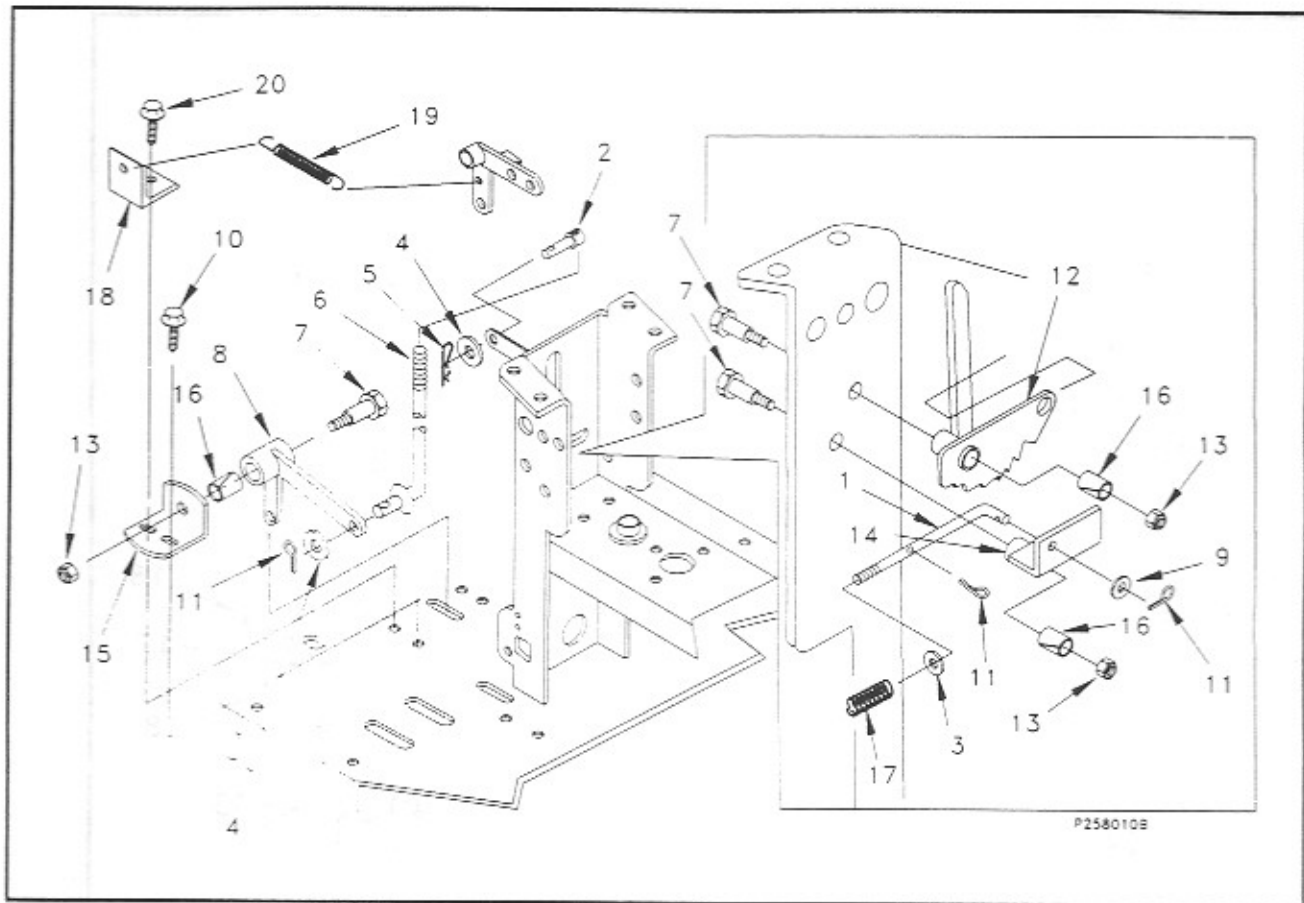
BRAKE PEDAL LINKAGES



P258012A

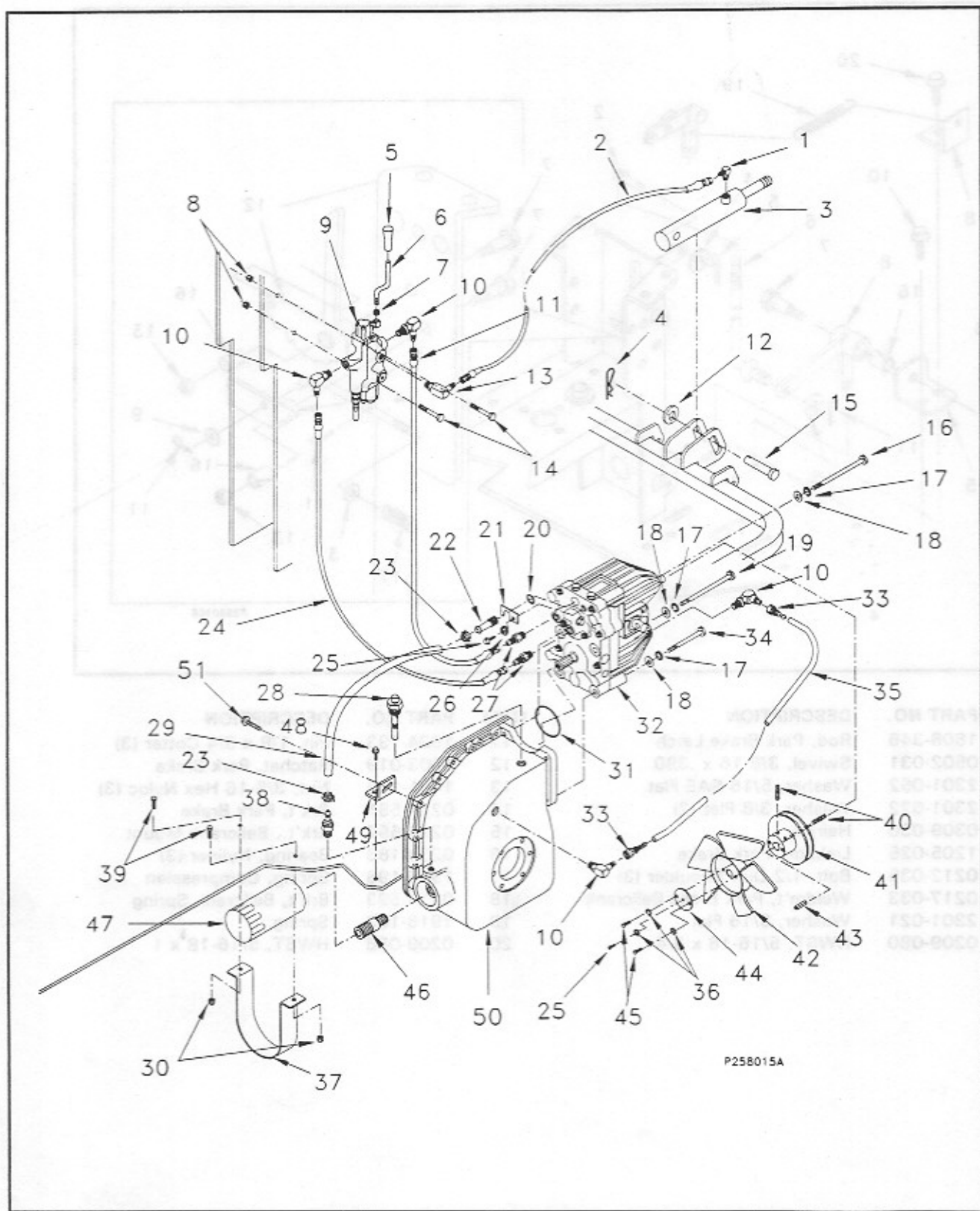
ITEM	PART NO.	DESCRIPTION	ITEM	PART NO.	DESCRIPTION
1	1604-013	Pin, 5/16 x 1 Clevis (6)	5	1604-193	Pin, 1/8 x 3/4 Cotter (14)
2	2501-027	Yoke, 5/16-18 Rod (6)	6	1808-200	linkage, Brake (4)
3	1401-020	Nut, 5/16 C Hex (6)	7	2301-022	Washer, 3/8 Flat (2)
4	2301-021	Washer, 5/16 Flat (12)	8	1808-336	Rod, Brake Connect
			9	1808-287	Linkage, brake (2)

PARK BRAKE RELEASE



ITEM	PART NO.	DESCRIPTION	ITEM	PART NO.	DESCRIPTION
1	1808-346	Rod, Park Brake Latch	11	1604-193	Pin, 1/8 x 3/4 Cotter (3)
2	0502-031	Swivel, 3/8-16 x .390	12	1803-019	Ratchet, Park Brake
3	2301-052	Washer, 5/16 SAE Flat	13	1401-132	Nut, 3/8-16 Hex Nyloc (3)
4	2301-022	Washer, 3/8 Flat (2)	14	0214-591	Brk't, Park Brake
5	0309-030	Hairpin	15	0214-567	Brk't., Bellcrank Mount
6	1205-025	Linkage, Park Brake	16	0204-183	Bearing, Nyliner (3)
7	0212-035	Bolt, 1/2 Did. Shoulder (3)	17	1916-198	Spring, Compression
8	0217-033	Weldm't, Park Brake Bellcrank	18	0214-593	Brk't, Bellcrank Spring
9	2301-021	Washer, 5/16 Flat	19	1916-183	Spring
10	0209-080	HWST, 5/16-18 x 3/4	20	0209-088	HWST, 5/16-18 x 1

HYDRAULIC SYSTEM



P258015A

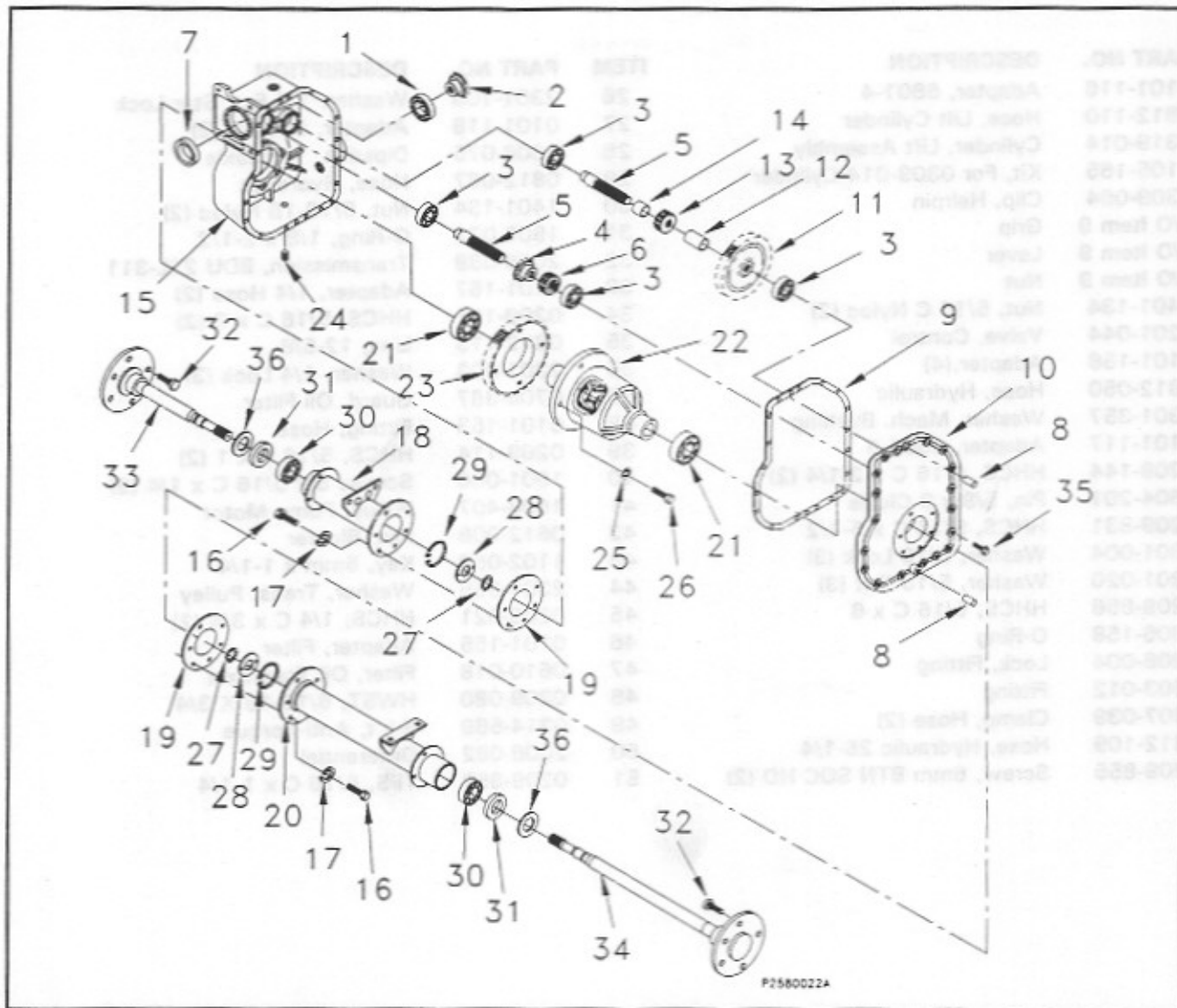
HYDRAULIC SYSTEM

22TY

ITEM	PART NO.	DESCRIPTION	ITEM	PART NO.	DESCRIPTION
1	0101-116	Adapter, 6801-4	26	2301-108	Washer, 1/4 Ext. Star Lock
2	0812-110	Hose, Lift Cylinder	27	0101-118	Adapter, 6400-6 (2)
3	0319-014	Cylinder, Lift Assembly	28	1606-075	Dipstick, Transaxle
	1105-165	Kit, For 0309-014 Cylinder	29	0812-067	Hose, Hydraulic
4	0309-064	Clip, Hairpin	30	1401-134	Nut, 5/16-18 Nyloc (2)
5	P/O Item 9	Grip	31	1902-073	O-Ring, 1/8 x 2-1/2
6	P/O Item 9	Lever	32	2006-089	Transmission, BDU 21L-311
7	P/O Item 9	Nut	33	0101-167	Adapter, 1/4 Hose (2)
8	1401-134	Nut, 5/16 C Nyloc (2)	34	0209-161	HHCS, 5/16 C x 3 (2)
9	2201-044	Valve, Control	35	0812-113	Line, 12-5/8
10	0101-158	Adapter, (4)	36	2301-003	Washer, 1/4 Lock (3)
11	0812-050	Hose, Hydraulic	37	0704-367	Guard, Oil Filter
12	2301-357	Washer, Mach. Bushing	38	0101-153	Fitting, Hose
13	0101-117	Adapter, 6801-6	39	0209-114	HHCS, 5/16 C x 1 (2)
14	0209-144	HHCS, 5/16 C x 2-1/4 (2)	40	1901-006	Screw, Set 5/16 C x 1/4 (2)
15	1604-201	Pin, 5/8 x 3 Clevis	41	1608-407	Pulley, Pump Motor
16	0209-831	HHCS, 5/16 C x 5-1/2	42	0612-006	Fan, Blower
17	2301-004	Washer, 5/16 Lock (3)	43	1102-059	Key, 5mm x 1-1/4
18	2301-020	Washer, 5/16 Flat (3)	44	2301-355	Washer, Trans. Pulley
19	0209-856	HHCS, 5/16 C x 6	45	0209-021	HHCS, 1/4 C x 3/4 (2)
20	1806-158	O-Ring	46	0101-155	Adapter, Filter
21	1206-004	Lock, Fitting	47	0610-018	Filter, Oil Transaxle
22	0603-012	Fitting	48	0209-080	HWST, 5/16-18 X 3/4
23	0307-039	Clamp, Hose (2)	49	0214-589	Brk't, Anti-Torque
24	0812-109	Hose, Hydraulic 25-1/4	50	2006-082	Differential
25	0209-855	Screw, 6mm BTN SOC HD (2)	51	0209-859	TFS, 5/16 C x 1-1/4

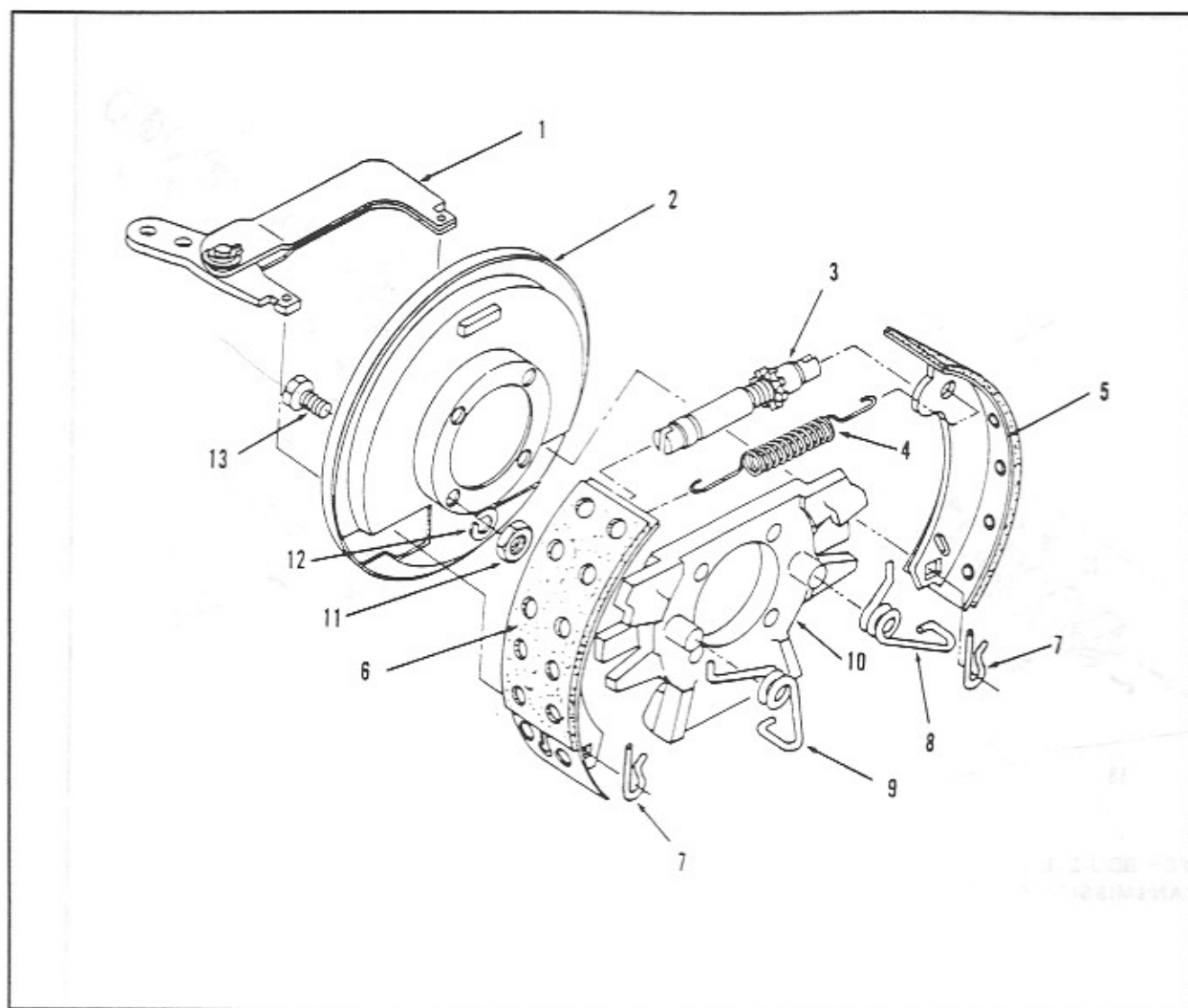
YTKC

HYDROSTATIC DIFFERENTIAL



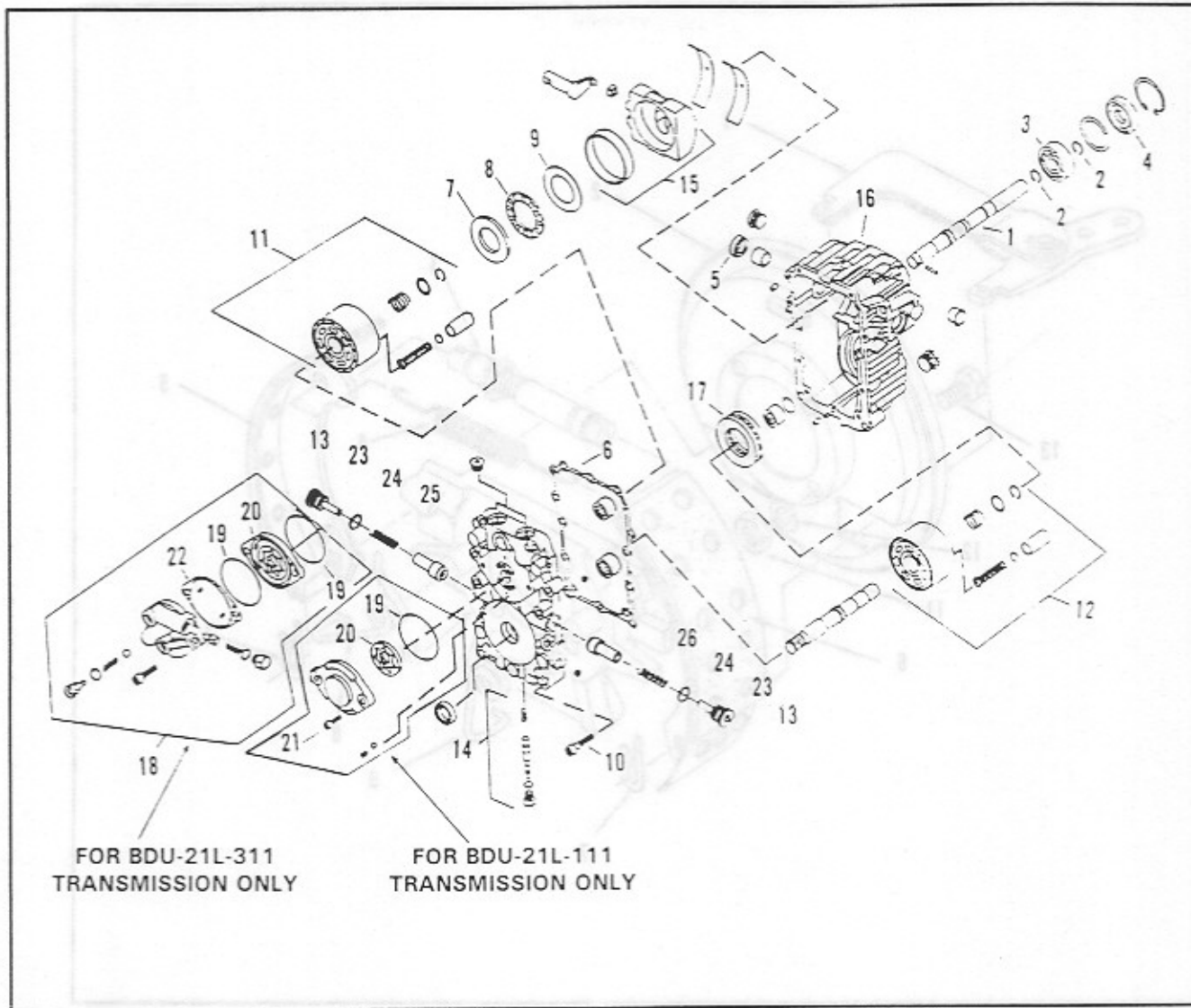
ITEM	PART NO.	DESCRIPTION	ITEM	PART NO.	DESCRIPTION
1	0204-159	Bearing, Ball	19	0701-022	Gasket, (2)
2	0702-148	Gear, Miter	20	0806-126	Housing, Axle LH
3	0204-040	Bearing, Ball (4)	21	0204-039	Bearing, Differential (2)
4	0702-147	Gear, Miter	22	0403-011	Differential, 24 T.
5	1904-154	Shaft, Internal Drive (2)	23	0702-054	Gear, Transmission
6	0702-057	Gear, Transmission	24	1606-070	Plug, Drain
7	1913-283	Spacer, Transmission	25	2301-014	Washer, 3/8 Internal Star (4)
8	1604-191	Dowel, Pin (2)	26	0209-318	HHCS, 3/8 C x 1 (4)
9	0701-103	Gasket, Case	27	1806-155	Ring, Retaining (2)
10	0304-165	Case, Half Shallow	28	2301-349	Washer, Thrust (2)
11	0702-053	Gear, Transmission	29	1207-025	Ring, Lock (2)
12	1912-034	Sleeve, Long	30	0204-038	Bearing, Axle (2)
13	0702-052	Gear, Transmission	31	1902-012	Seal, Transmission (2)
14	1912-033	Sleeve, Short	32	0209-705	Bolt, 7/16-20 x 1-1/4 (10)
15	0304-166	Case, Half Deep	33	0103-118	Axle, Short Transmission
16	0209-313	Bolt, 3/8-16 x 7/8 Hex (12)	34	0103-119	Axle, Long Transmission
17	2301-006	Washer, 3/8 Lock (16)	35	0209-088	HWST, 5/16 x 1 (17)
18	0806-125	Housing, Axle RH	36	2301-361	Washer, 1-1/2 ID x 2 OD (2)

BRAKE DRUM & PADS



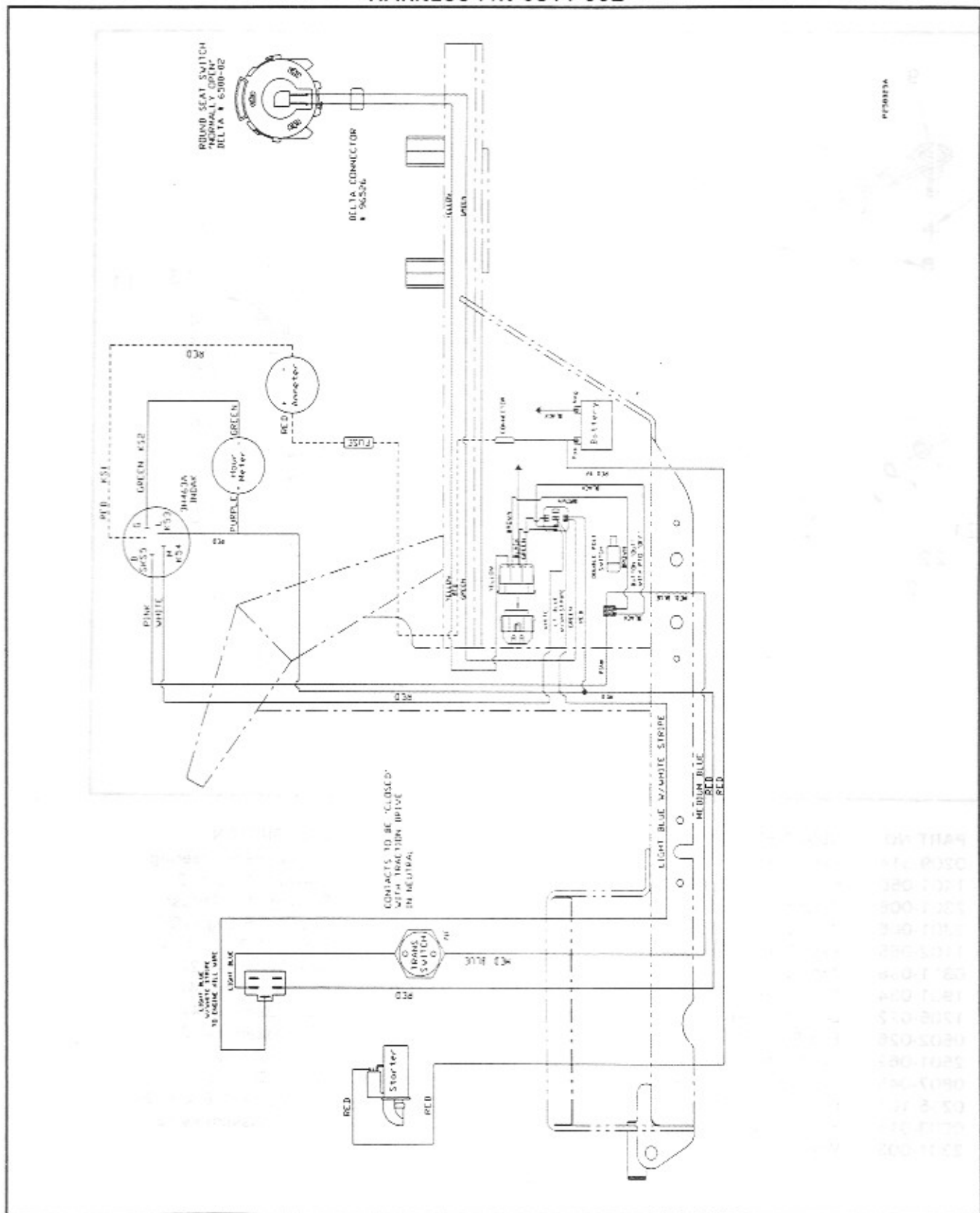
ITEM	PART NO.	DESCRIPTION	ITEM	PART NO.	DESCRIPTION
1	1201-095	Assm. Park Br. Lever (2)	8	1916-144	Spring, Shoe Ret. (RH) Rd (2)
2	1906-015	Shield, Dust (2)	9	1916-143	Spring, Shoe Ret. (LH) Gn (2)
3	1901-216	Assem., Adj. Screw Nut (2)	10	1935-003	Torque Spider, Finished (2)
4	1916-145	Spring, Adj. Screw (Blue) (2)	11	1401-020	Nut, 5/16C Hex (8)
5	1908-013	Assem., Shoe & Lining (2)	12	2301-004	Washer, 5/16 Lock (8)
6	1908-012	Assem., Shoe & Lining (2)	13	0209-120	HHCS, 5/16C x 1-1/4
7	1604-133	Retainer, Lever Pin (4)			

**SUNDSTRAND BDU-21L-311 & 111
TRANSMISSIONS**

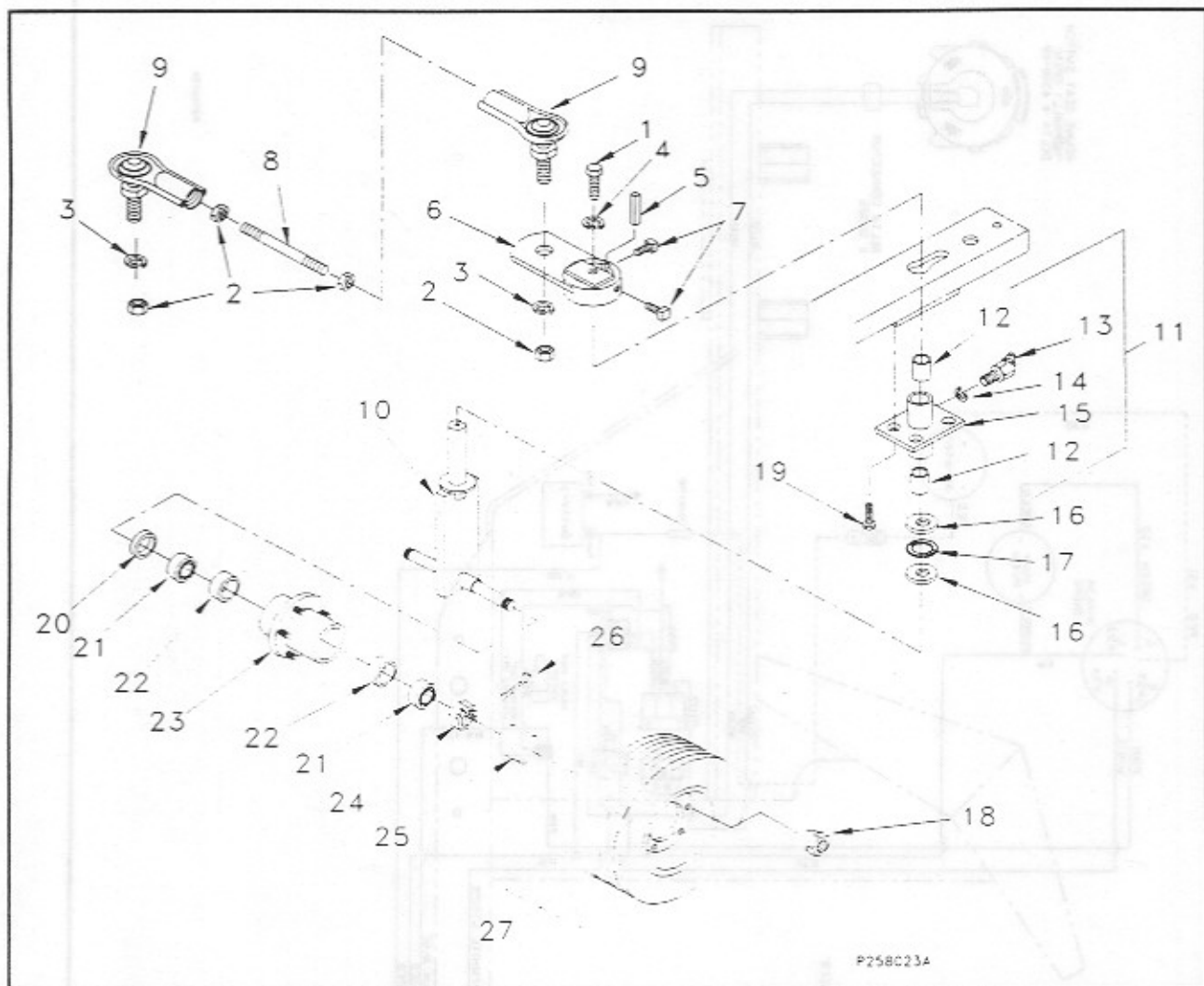


ITEM	PART NO.	DESCRIPTION	ITEM	PART NO.	DESCRIPTION
1	1904-296	Shaft	14	1105-141	Kit, Bypass Valve
2	1804-031	Ring, Retaining	15	1105-142	Kit, Splash Plate
3	0204-165	Bearing, Ball	16	1105-143	Kit, Housing
4	1902-078	Seal, Lip	17	0204-166	Bearing, Needle
5	1902-077	Seal, Lip	18	1105-144	Kit, Charge Relief Valve
6	0701-104	Gasket, Center Section	19	1902-079	O Ring
7	1913-303	Plate, Thrust	20	1810-010	Assembly, Gerotor
8	0204-167	Bearing, Roller Thrust	21	1901-237	Screw
9	1913-304	Plate, Thrust	22	1907-066	Shim, Charge Pump
10	1901-236	Screw	23	1602-081	O Ring, Check Valve (2)
11	1105-138	Kit, Cylinder Block	24	1616-195	Spring, Check Valve (2)
12	1105-139	Kit, Cylinder Block	25	1616-004	Poppet, .063
13	1606-076	Plug, Check Valve (2)	26	1616-005	Poppet, Blank

ELECTRICAL SYSTEM HARNESS P/N 0811-062

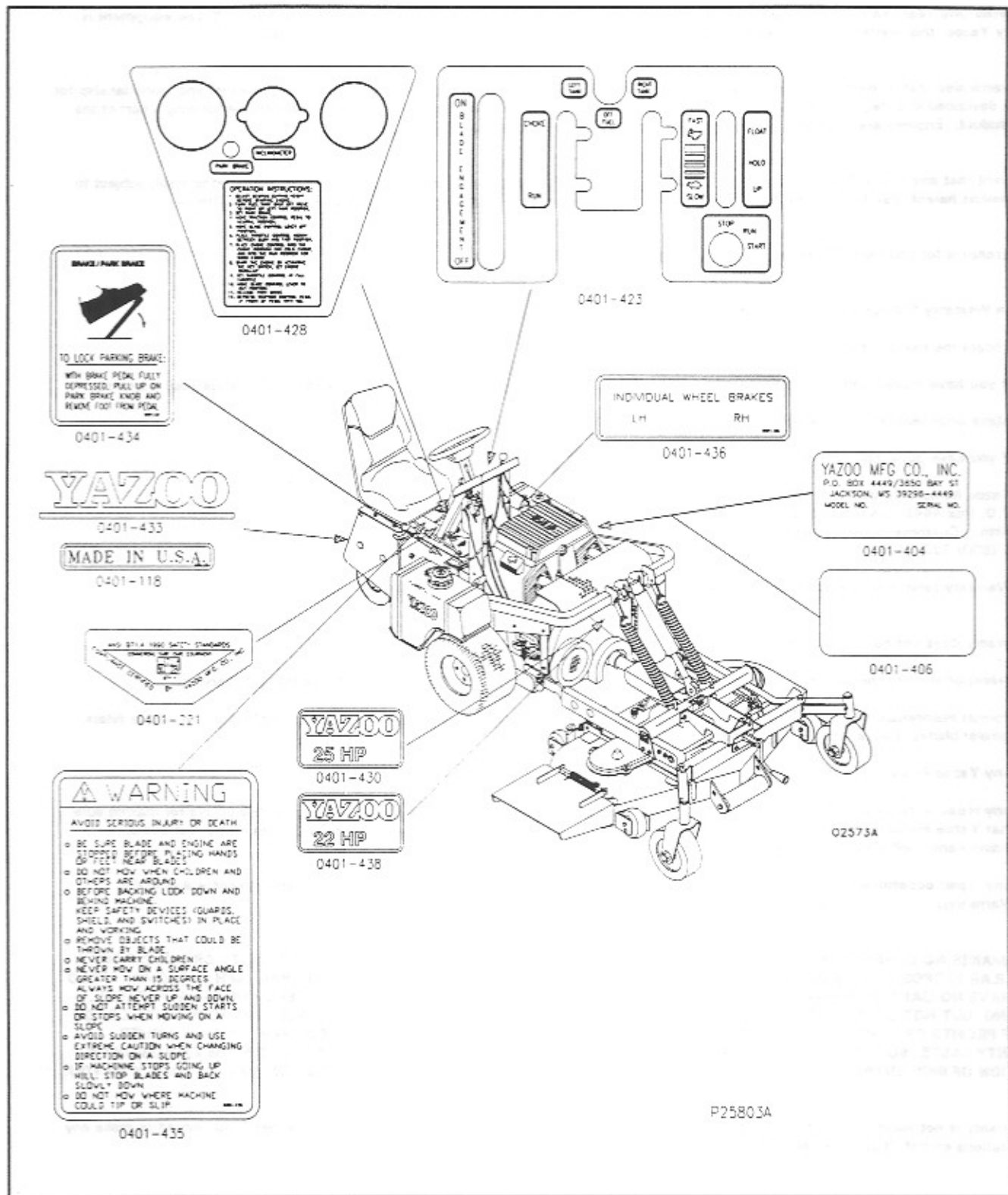


STEERING COMPONENTS DUAL WHEEL



ITEM	PART NO.	DESCRIPTION	ITEM	PART NO.	DESCRIPTION
1	0209-314	HHCS, 3/8 C x 1	15	0806-347	Flange, Rear Steering
2	1401-050	Nut, 1/2 F Hex (4)	16	2301-097	Washer, Thrust (2)
3	2301-008	Washer, 1/2 Lock (2)	17	0204-078	Bearing, 1/2 Thrust
4	2301-006	Washer, 3/8 Lock	18	1401-057	Nut, 1/2 F Lug (10)
5	1102-065	Key, 3/8 x 1 Square	19	0209-851	HHCS, 1/2 C x 1 (4)
6	0311-098	Arm, Steering	20	1804-025	Seal, Retainer (2)
7	1901-034	Screw, Set 3/8 C x 3/4 (2)	21	0204-075	Bearing, Cone (4)
8	1205-022	Linkage, Steering Rod	22	0312-016	Race, Bearing (4)
9	0502-026	End Rod, 1/2 F RH Thd. (2)	23	0807-022	Hub, assembly (2)
10	2501-062	Yoke, Steering	24	1401-096	Nut, castle (2)
11	0807-045	Hub, Steering Assembly	25	1906-010	Cover, Dust (2)
12	0215-101	Bushing, Steering (2)	26	1604-042	Pin, Cotter 1/8 x 1 (2)
13	0603-011	Fitting, Zerk 1/4-20 45 degree	27	2305-024	Wheel, Assembly (2)
14	2301-003	Washer, 1/4 Lock			

DECALS SAFETY MESSAGES



YAZOO LIMITED ONE YEAR WARRANTY

1. This Limited One-Year Warranty is issued by Yazoo Manufacturing Company, Inc., only to the original purchaser. If Yazoo equipment is leased by Yazoo, this warranty shall extend also to the original lease as if such leaser were the original owner.
2. Yazoo warrants that all new equipment manufactured by Yazoo (Yazoo Products) shall be free of defects in material and workmanship for the term described in paragraph 4 below. Except as herein-after provided, this warranty does not cover any engine forming a part of the Yazoo product. Engines are covered by and subject to separate warranties of the manufacturers thereof.
3. In the event that any Yazoo Product warranted hereunder shall be defective or fail to conform with this warranty, Yazoo shall, subject to the provisions hereof, pay for, or provide labor and materials for, the repair or replacement of such defective Yazoo Product.
4. This warranty is for one year (12 months) from purchase date for Yazoo products.
5. To obtain Warranty Service on a Yazoo Product use this procedure:
 - a. Locate the nearest Yazoo dealer.
 - b. If you have moved notify any Yazoo dealer in your area. You must be able to confirm purchase date to validate your warranty.
 - c. Make arrangements to have the equipment delivered to the dealer (refer to paragraph 6a).
 - d. If you have questions concerning the Yazoo Limited Warranty, they should be referred to:

Yazoo Manufacturing Company, Inc.
P.O. Box 4449 / Jackson, Mississippi 39296
Attn.: Customer Service Department
1 (800) 723-9496
 - e. Warranty service on Yazoo Products must be performed by an authorized Yazoo dealer.
6. This warranty does not cover the following:
 - a. Transportation to the Yazoo dealership, (If the Yazoo dealer provides transportation he will charge for such service).
 - b. Normal maintenance services and normal maintenance items such as tires, brakes, brake shoes, spark plugs, belts, oil, air filters, mower blades, gauge wheels, skids and other wear items.
 - c. Any Yazoo Product which has been altered or modified in any way.
 - d. Any repair or replacement occasioned by customer neglect or lack of maintenance. (The purchaser is responsible for making sure that Yazoo Products are operated and serviced as directed in the applicable manual or service instruction. Incorrect use or maintenance will void this Warranty).
 - e. Any repair occasioned by the use of any attachment not approved by Yazoo (The use of any such attachment will void this Warranty).
7. YAZOO MAKES NO OTHER EXPRESS OR IMPLIED WARRANTY, OR WARRANTIES AS TO THE MERCHANTABILITY OR FITNESS FOR A PARTICULAR PURPOSE. ALL WARRANTIES ARE LIMITED IN DURATION TO THE TERMS SET OUT IN PARAGRAPH 4, ABOVE. YAZOO SHALL HAVE NO LIABILITY FOR INCIDENTAL OR CONSEQUENTIAL DAMAGES RESULTING FOR THE BREACH OF ANY WARRANTY, INCLUDING, BUT NOT LIMITED TO, LIABILITY FOR INCONVENIENCE, RENTAL OR PURCHASE OF REPLACEMENT EQUIPMENT, OR FOR LOSS OF PROFITS OR OTHER COMMERCIAL LOSS. SOME STATES DO NOT ALLOW A LIMITATION ON HOW LONG AN IMPLIED WARRANTY LASTS, SO THE ABOVE STATEMENT MAY NOT APPLY TO YOU. SOME STATES DO NOT ALLOW THE EXCLUSION OR LIMITATION OF INCIDENTAL OR CONSEQUENTIAL DAMAGES, SO THE ABOVE LIMITATION OR EXCLUSION MAY NOT APPLY TO YOU.
8. This Warranty is not subject to change or modification by anyone, including Yazoo dealers, and no Yazoo dealer is authorized to make any representations on behalf of Yazoo Manufacturing Company, Inc.

Revised 12/14/92

YAZOO MANUFACTURING COMPANY
POST OFFICE BOX 4449
JACKSON, MISSISSIPPI 39296-4449