

Higher Efficiencies

UP TO 13 SEER



**NATIONAL
COMFORT
PRODUCTS**

HEATING & A/C EQUIPMENT

Thru-the-Wall Comfort for all types of Multi-Family Construction



Split System Condensing Units

*All Units Meet DOE Energy Standards**



AHRI CERTIFIED
www.ahridirectory.org

Unitary Small AC
AHRI Standard 210/240
Certification applies only when the complete system
is listed with AHRI.

NCPE Deluxe Series

1000 | 3000 | 4000

Features

- Compressor sound jacket and cabinet extensional dampening material for a quieter operation
- Compressor Crankcase Heater to protect from liquid refrigerant migration
- Compressor Hard-Start Kit to assist in starting at lower voltage and brown out conditions
- Solid-State Condenser Fan Motor Speed Control for optimum operation at lower ambient conditions
- High and Low Refrigerant Pressure Safety Switches
- Compressor Anti-Cycle Time Delay
- Easy Access to fan motor
- Vibration Absorber in Suction Line (Not available on 4000 D Series)
- Optional Wall Sleeves, Indoor Sound Covers and Architectural Louver Grilles available on all models

Why Thru-the Wall?

- Easily serviced in any weather
- Less expensive installations
- Ground clutter elimination
- No theft or vandalism
- Less refrigerant charge
- No roof penetration
- Short copper tube runs
- Separate meter savings
- Better appearance

*Please consult the DOE Compliance Certification Database (<https://tinyurl.com/NCPCCondensers>) for a list of rated combinations of indoor and outdoor units. Combinations of outdoor and indoor units that are not rated will require factory testing and listing with DOE. Please consult the factory.

Go Thru-the-Wall

**NATIONAL
COMFORT
PRODUCTS**

HEATING & A/C EQUIPMENT

National Comfort Products

A Division of National Refrigeration and Air Conditioning Products, Inc.

539 Dunksferry Road • Bensalem, PA 19020-5908
(800) 523-7138 • Fax (215) 639-1674

www.nationalcomfortproducts.com

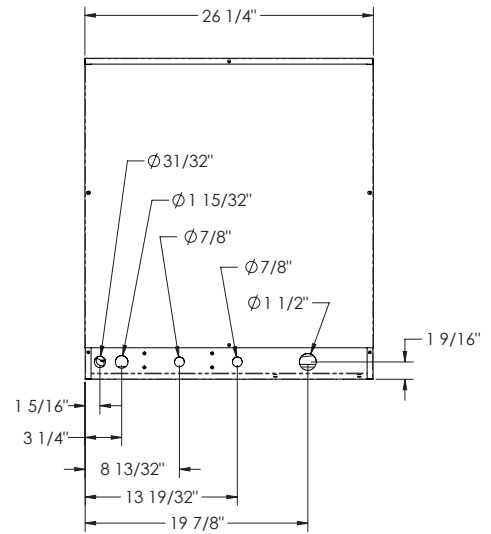
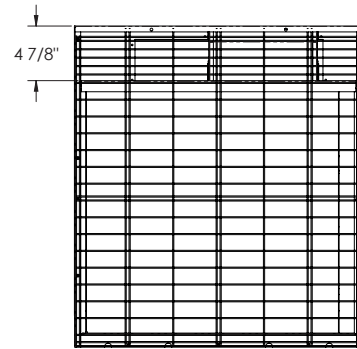
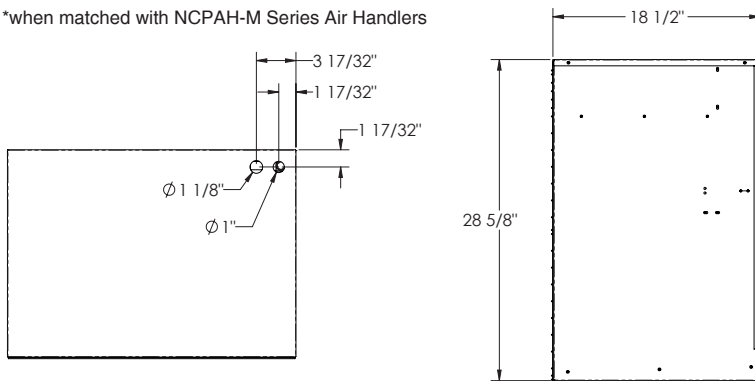
NCPE Series Condensing Units

1000 Series 12 SEER w/ matches up to 13 SEER*

All units 208/230V/1Ph AC 60 Hz - 180 lbs

Model	Rated Capacity (Btu/h)	Compressor		MCA	MOP
		RLA	LRA		
NCPE-418-1010	18,000	9.0	56.3	13	20
NCPE-424-1010	23,000	10.9	62.9	16	25
NCPE-430-1010	27,200	12.8	67.8	18	30
Cond. Fan Motor Specs	1/4 HP, 1600 RPM, 1.3 FLA				
Condenser Coil Specs	3.61 ft ² Face Area, 16 FPI				
Dimensions	26 1/4" W x 28 5/8" H x 18 1/2" D				
Liquid Valve	3/8"	Suction Valve		3/4"	

*when matched with NCPAH-M Series Air Handlers

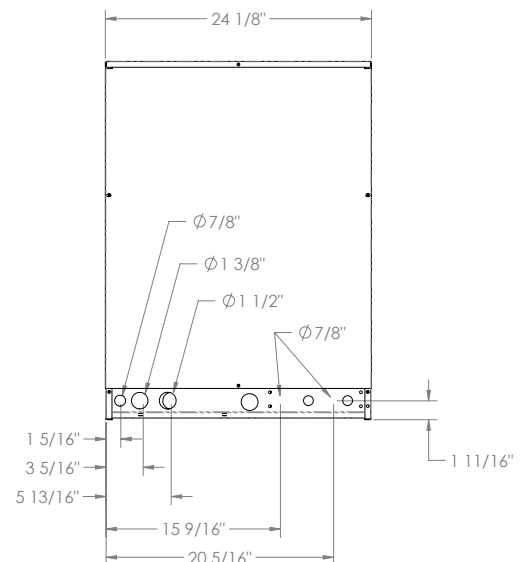
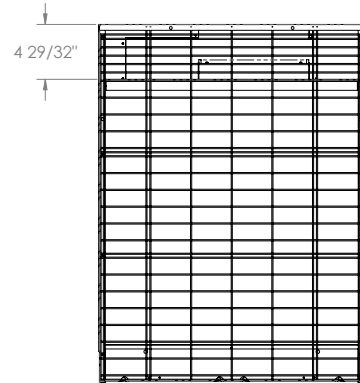
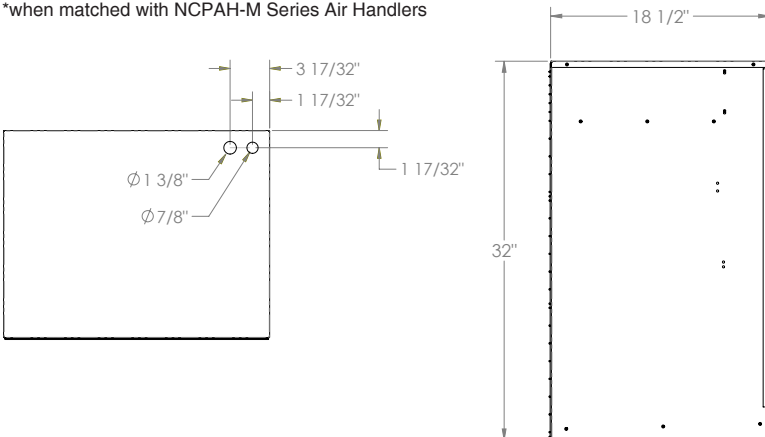


3000 Series 12 SEER w/ matches up to 13 SEER*

All units 208/230V/1Ph AC 60 Hz - 180 lbs

Model	Rated Capacity (Btu/h)	Compressor		MCA	MOP
		RLA	LRA		
NCPE-418-3010	18,000	9.0	56.3	13	20
NCPE-424-3010	23,000	10.9	62.9	16	25
NCPE-430-3010	27,200	12.8	67.8	18	30
Cond. Fan Motor Specs	1/4 HP, 1600 RPM, 1.3 FLA.				
Condenser Coil Specs	3.77 ft ² Face Area, 16 FPI				
Dimensions	24 1/8" W x 32" H x 18 1/2" D				
Liquid Valve	3/8"	Suction Valve		3/4"	

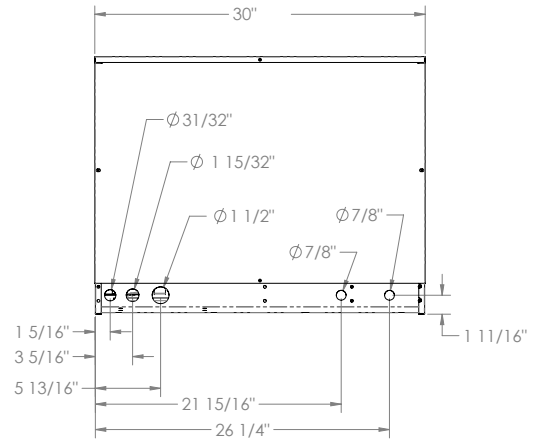
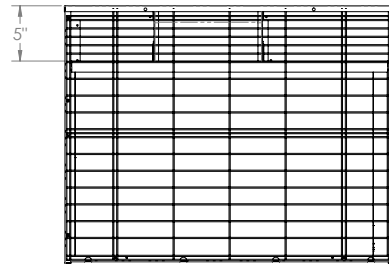
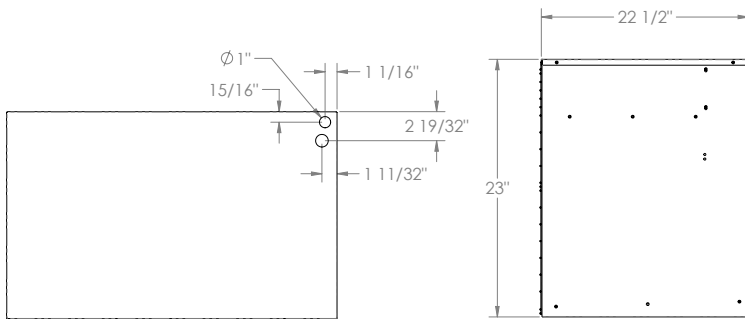
*when matched with NCPAH-M Series Air Handlers



NCPE Series Condensing Units

4000 Series 12 SEER w/ matches up to 13 SEER*					
All units 208/230V/1Ph AC 60 Hz - 180 lbs					
Model	Rated Capacity (Btu/h)	Compressor		MCA	MOP
		RLA	LRA		
NCPE-418-4010	18,000	9.0	56.3	13	20
NCPE-424-4010	23,000	10.9	62.9	16	25
NCPE-430-4010	27,200	12.8	67.8	18	30
Cond. Fan Motor Specs	1/4 HP, 1600 RPM, 1.3 FLA				
Condenser Coil Specs	3.14 ft ² Face Area, 16 FPI				
Dimensions	30" W x 23" H x 22 1/2" D				
Liquid Valve	3/8"	Suction Valve		3/4"	

*when matched with NCPAH-M Series Air Handlers



See Matching AHRI Rated Air Handler Information on next page

Matching AHRI Rated Air Handlers

Condensing Units	Air Handler	Rated Cooling (Btu/h)	Airflow (CFM)	Efficiency Ratings	Replaces
1000 D Series					
NCPE-418-1010/D	NCPAH-24-A1	18,000	580	12 SEER	Bryant, Carrier, Day & Night, Dunham-Bush, Lennox, Magic Chef, Meyer, Payne, First Co., U.S. A/C (BB)
NCPE-424-1010/D	NCPAH-24-A1	23,000	830	12 SEER	
NCPE-430-1010/D	NCPAH-36-A1	27,200	950	12 SEER	
NCPE-418-1010/D	NCPAH-24-M1	18,000	600	13 SEER	
NCPE-424-1010/D	NCPAH-24-M1	23,000	850	12.50 SEER	
NCPE-430-1010/D	NCPAH-36-M1	27,200	950	12 SEER	
3000 D Series					
NCPE-418-3010/D	NCPAH-24-A1	18,000	580	12 SEER	Carrier, Fedders, Dunham-Bush, Lennox, Magic Chef, Meyer, Rheem, First Co., U.S. A/C (AB)
NCPE-424-3010/D	NCPAH-24-A1	23,000	830	12 SEER	
NCPE-430-3010/D	NCPAH-36-A1	27,200	950	12 SEER	
NCPE-418-3010/D	NCPAH-24-M1	18,000	600	13 SEER	
NCPE-424-3010/D	NCPAH-24-M1	23,000	850	13 SEER	
NCPE-430-3010/D	NCPAH-36-M1	27,200	950	12 SEER	
4000 D Series					
NCPE-418-4010/D	NCPAH-24-A1	18,000	580	12 SEER	Dunham-Bush, Hydro-Therm Space Pack, Lennox, Luxaire York, First Co., U.S. A/C (CB)
NCPE-424-4010/D	NCPAH-24-A1	23,000	830	12 SEER	
NCPE-430-4010/D	NCPAH-36-A1	27,200	950	12 SEER	
NCPE-418-4010/D	NCPAH-24-M1	18,000	600	13 SEER	
NCPE-424-4010/D	NCPAH-24-M1	23,000	850	12.50 SEER	
NCPE-430-4010/D	NCPAH-36-M1	27,200	950	12 SEER	

*Please consult the Compliance Certification (<https://tinyurl.com/NPCCondensers>) for a list of rated combinations of indoor and outdoor units. Combinations of outdoor and indoor units that are not rated will require factory testing and listing with DOE. Please consult the factory.

Dimensions include screwheads on both sides of the cabinet.

All specifications are subject to change without notice.



National Comfort Products
A Division of National Refrigeration and Air Conditioning Products, Inc.
539 Dunksferry Road • Bensalem, PA 19020-5908
(800) 523-7138 • Fax (215) 639-1674
www.nationalcomfortproducts.com



Spec NCPE D Series 6/2020