

Transmission ECU Compatibility
 VAH, VHD, VN, VT

FSB 432-014, Transmission ECU Compatibility

(October 2014)

The current transmission ECU (TECU) hardware for the I-Shift transmission used in the US07, US2010 emissions, OBD2013 and newer vehicles in North America is the same part number (21484418). The software that is programmed into them is what makes them different.

The following instructions were written for converting a US07 and US2010 emissions TECU to an OBD2013 TECU using premium tech tool (PTT) version 2. The TECU can be converted backwards from OBD2013 to US07 and US2010 using PTT version 1 or PTT version 2 and the appropriate procedure.

Note: This process can only be performed on the latest TECU hardware part number 21484418.

Required Tools

Premium Tech Tool version 2.03.41 or higher

Diagnostic Connector 88890304

Communication Interface 88890300

Note: Using other interfaces may affect programming speed.

Special tools 9990041, 9990061/62 and 9998699

Note: Check Premium Tech Tool version by clicking on Help tab and then click on "About Tech Tool".

Service personnel: Please circulate, read and initial

Service Manager	Warranty Administrator	Workshop Foreman	Service Technicians						

Procedure

Connect PTT to the vehicle, identify the unit and verify that PTT can communicate with the transmission.

- If the transmission is identified, proceed to Step 5.

Control Unit Data Mismatch

Control Unit Data Mismatch
The product data and central systems data do not match.
- The wrong software is installed on the product.
Due to the mismatch, some operations may not be available.
Select an item in the table to view details about the control unit.

Readout Time: 10/17/2013 2:56 PM

Control Unit	Product Data	Central Data	Hardware	Software
Transmission ECU (TECU)	✓	✓	✓	✖
Aftertreatment Control Module (ACM)	✓	✓	✓	✓
Engine Control Module (EMS)	✓	✓	✓	✓
Radio (MID 206)	✓	✓	✓	✓
ECC-ECU (MID 146)	✓	✓	✓	✓
Airbag ECU (MID 232)	✓	✓	✓	✓

Details (Transmission ECU (TECU))

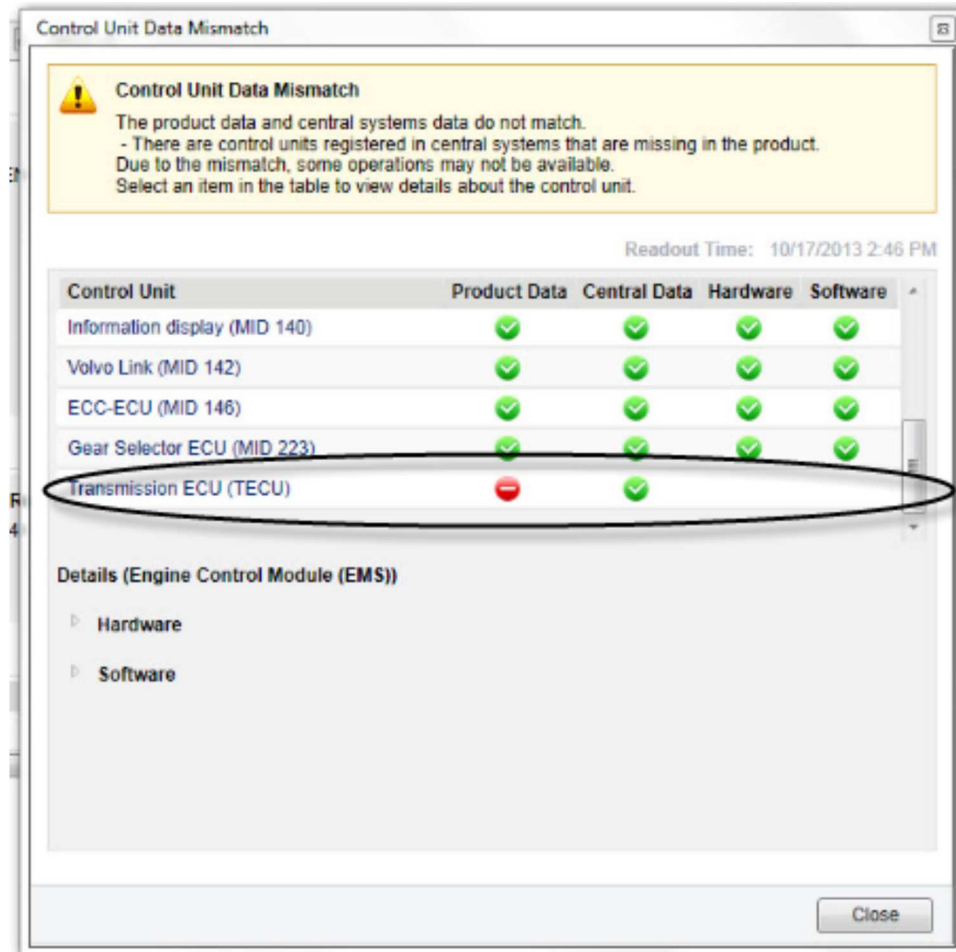
- Hardware
- Software ✖
 - Product Data
 - Central Data
 - MSW 22182445
 - CSW 22123494

Close

W2093626

TECU programmed with the correct software to allow communication or completely blank without software

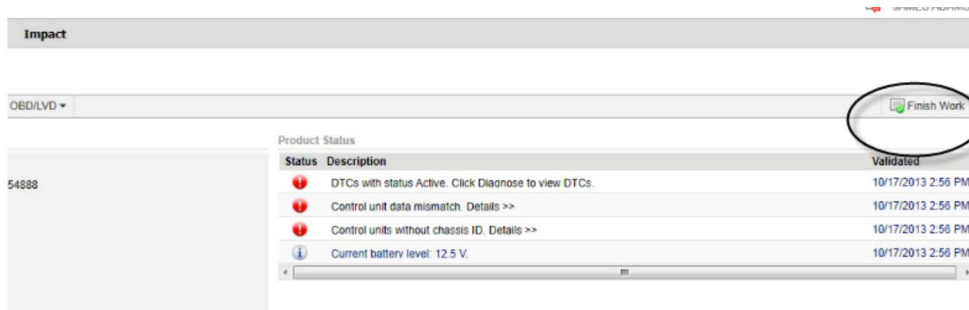
- If the transmission is not identified, proceed to Step 1.



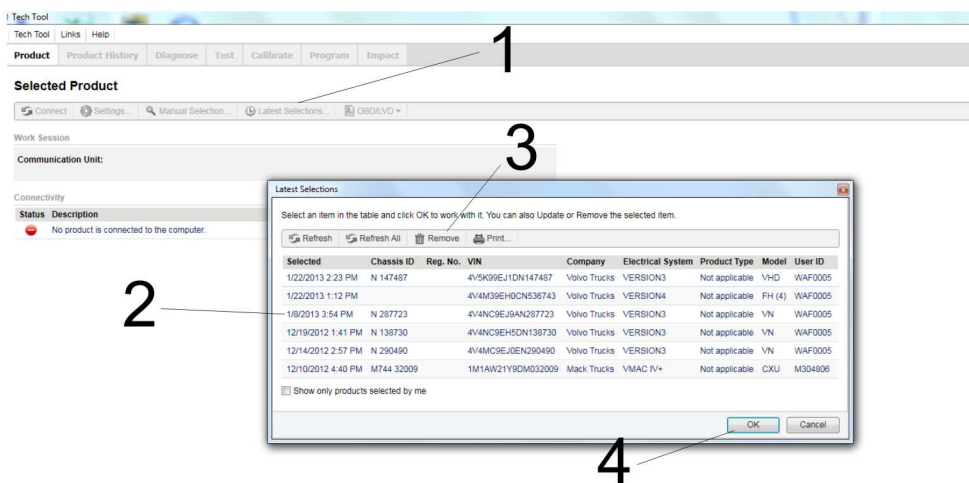
W2093627

TECU programmed with incorrect software, no communication

- 1 Turn ignition OFF, select Finish Work on the product screen and delete the chassis number from PTT.



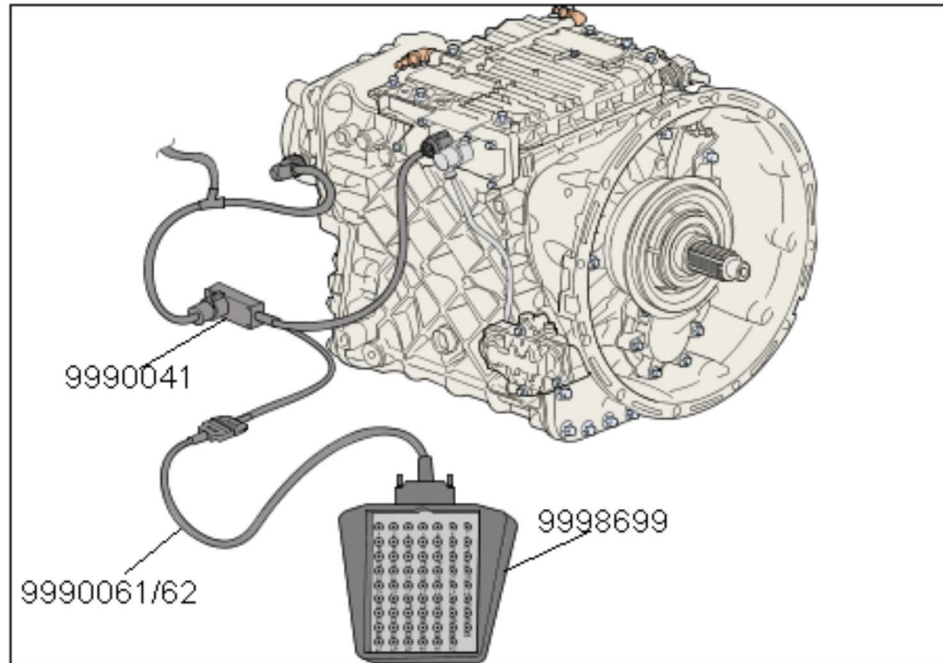
W2093744



W2093745

1	Pick Latest Selections
2	Select the chassis
3	Click Remove
4	Click OK

- 2 Use special tools 9990041 and 9990061/62 to connect breakout box 9998699 to the TECU.



W2093628

- 3 Use a jumper wire to connect Pin 18 (supply +) to Pin 6 (Boot Mode) on breakout box.
- 4 Turn ignition ON and connect PTT. Allow PTT to identify chassis. PTT should indicate that the TECU is now online and does not contain a chassis ID.
- 5 Select 1700-08-03-39 Program Electronic Control Unit in Program menu. Select TECU and Update Electronic Control Unit with latest software.
- 6 Remove jumper wire from breakout box when programming starts.
- 7 After programming is complete, turn ignition OFF for 30 seconds.
- 8 Turn the ignition ON and re-identify/refresh the chassis. The TECU should be in the Control Unit Information screen and correctly programmed.
- 9 Calibrate transmission gearbox and road test vehicle to calibrate inclination sensor.
- 10 Clear diagnostic trouble codes (DTC).

Reimbursement

This repair may be eligible for reimbursement if a product failure was experienced within time and mileage limits of the applicable Warranty coverage. Reimbursement is obtained via the normal claim handling process.	UCHP Reimbursement	eWarranty Reimbursement
Claim Type (used only when uploading from the Dealer Bus. Sys.)	W	W
Labor Code		
Primary Labor Code	4320-22-09-01 — 0.4 hrs.	43225-2-00 — 0.4 hrs.
Causal Part	3092515	3092515

Volvo Trucks North America reserves the right to make any changes in design or to make additions to or upon its products without incurring any obligations to install the same on vehicles previously built.