

Windshield Dam Is Loose/Visible

Service Category Vehicle Exterior

Section Window/Glass

Market USA



Applicability

YEAR(S)	MODEL(S)	ADDITIONAL INFORMATION
2010 – 2013	Tundra	Plant Code(s): X WMI(s): 5TF

Introduction

Some 2010 – 2013 model year Tundra vehicles may exhibit a condition where a deformed windshield dam, or some weatherstrip may be loose between the A-pillar garnish and windshield glass. Normally, the windshield dam is not visible and is only necessary for production. Over time, the dam adhesive may lose adhesion and deform. There is no functional concern with the windshield sealing and there is no need to replace or reseal the windshield if there are no complaints of water/air leaks. Please follow the process below to remove the exposed portion of the windshield dam.

Production Change Information

This bulletin applies to vehicles produced **BEFORE** the Production Change Effective VINs shown below.

MODEL	ENGINE	DRIVETRAIN	PRODUCTION CHANGE EFFECTIVE VIN
Tundra	1GR-FE	2WD	5TFJU5F1#DX004830
			5TFRU5F1#DX028443
			5TFLU5F1#DX028441
			5TFJM5F1#DX001347
			5TFRM5F1#DX052321
			5TFEM5F1#DX052323
	1UR-FE	4WD	5TFUM5F1#DX040005
			5TFDM5F1#DX039993
	3UR-FE	2WD	5TFSY5F1#DX133689
			5TFRY5F1#DX133688
			5TFFY5F1#DX133673
			5TFEY5F1#DX133674
5TFLY5F1#DX133649			

Windshield Dam Is Loose/Visible

Production Change Information (Continued)

MODEL	ENGINE	DRIVETRAIN	PRODUCTION CHANGE EFFECTIVE VIN
Tundra	3UR-FE	4WD	5TFTY5F1#DX007799
			5TFKY5F1#DX005557
			5TFCY5F1#DX014457
			5TFBY5F1#DX273419
			5TFMY5F1#DX273864
			5TFUY5F1#DX273414
			5TFDY5F1#DX273341
			5TFHY5F1#DX273340
	3UR-FBE		5TFKW5F1#DX005729
			5TFBW5F1#DX273441
			5TFUW5F1#DX273410
			5TFHW5F1#DX273297
			5TFDW5F1#DX273344
			5TFMW5F1#DX273987
			5TFCW5F1#DX014458

Warranty Information

OP CODE	DESCRIPTION	TIME	OFF	T1	T2
BD1300	Trim and Relocate Windshield Dam	0.4	90998-91004	62	14

APPLICABLE WARRANTY

- This repair is covered under the Toyota Basic Warranty. This warranty is in effect for 36 months or 36,000 miles, whichever occurs first, from the vehicle's in-service date.
- Warranty application is limited to occurrence of the specified condition described in this bulletin.

Windshield Dam Is Loose/Visible

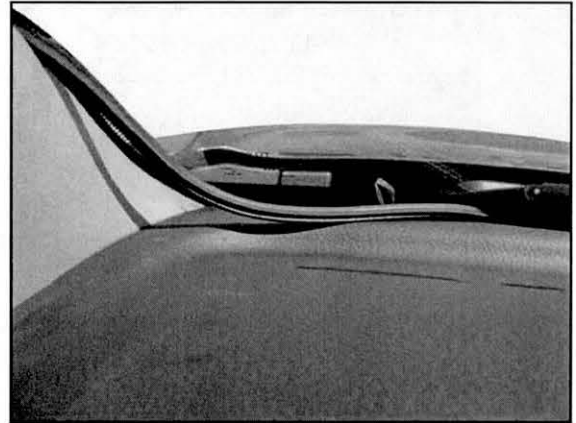
Repair Procedure

1. Confirm that the windshield dam is loose.

NOTE

The condition may present itself on either lower corner of the windshield.

Figure 1.



2. Remove the front pillar garnish.

- A. Using a screwdriver, detach the 2 claws and remove the 2 assist grip plugs.

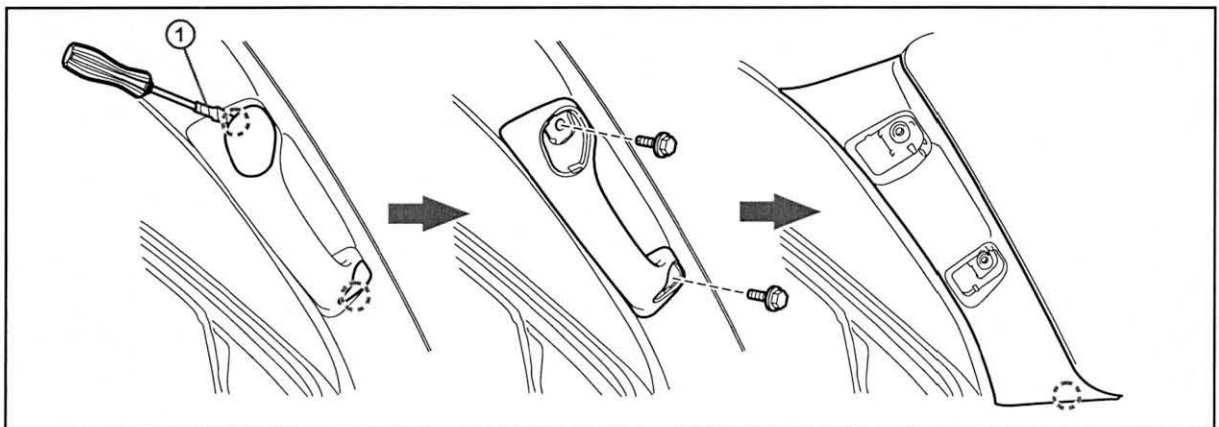
HINT

Tape the screwdriver tip before use.

- B. Remove the 2 bolts and assist grip.

- C. Detach the claw and remove the front pillar garnish.

Figure 2.



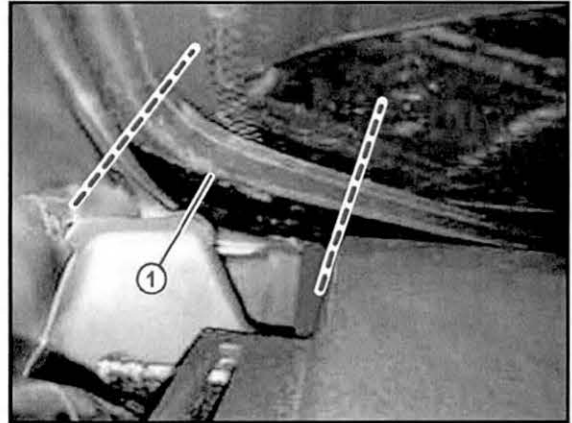
1	Protective Tape
---	-----------------

Windshield Dam Is Loose/Visible

Repair Procedure (Continued)

- Using scissors or a utility knife, cut along the dashed lines shown in Figure 3. Once cut, discard the center section that was removed and tuck the loose ends back into their corresponding locations.

Figure 3.



1	Discard
---	---------

- Reassemble vehicle in reverse order.
- Verify that the windshield dam is no longer visible from inside the cabin or from the outside looking in.