

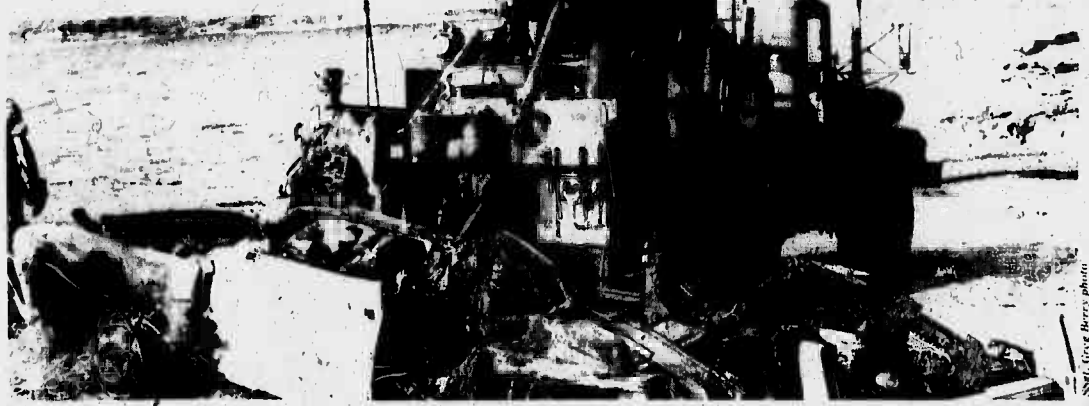
Hawaii Marine

MCAS Kaneohe Bay, Hawaii

May 9, 1985



Marines from Motor Transport Company, Brigade Service Support Group, hoist a derelict vehicle up a 30-foot cliff next to Kaneohe Bay.



An M543 wrecker crew from MTCO., BSSG readies the remains of an automobile for hoisting onto a five-ton truck.

Marines assist state in removing 'eye sore'

by SSgt. Greg Berry

Marines don't usually use a five-ton truck and a wrecker to clean a toilet bowl, but when it comes to hauling rusted automobiles out of one, they do.

Marines from Motor Transport Company, Brigade Service Support Group removed a derelict vehicle from Hanauma Bay, also known as the "Toilet Bowl," a natural rock formation that causes wave action initiating a flushing action. But the car was a bit much for the toilet to "flush."

The car was pushed off a cliff, next to Kulaniana'ole Highway, about 10 years ago, according to John Yamauchi of the State Litter Control Office. Waves pushed it to its resting place next to the "Toilet Bowl" where thousands of tourists saw the deterring sight.

The Marines were asked to airlift the wreck from the site in 1979, but winds in the area posed a safety hazard and they declined. The Army also declined to use a helicopter to remove the eyesore for the same safety reasons.

But Yamauchi called on the Marines again for help, and this time the challenge was accepted. Assets of state, and local government, and the Marine Corps, teamed on April 30 for the clean-up project.

The recovery operation went easier than we anticipated," said Captain George Haase, MTCO., BSSG. "We expected that it would take about half an hour to haul the vehicle up, but only took 12 1/2 minutes."

The operation provided excellent training for the M543 wrecker crew and the other BSSG Marines there. "We could have cut it and hauled the car up in pieces, but we wanted to get the training," Haase said.

Training is important to Motor Transport Marines,

and the derelict vehicle recovery offered them several challenges. The vehicle had to be lifted more than 30 feet to get it out of the Toilet Bowl, then trucked over rough terrain to a place where it could be hauled away by workers from Honolulu's Public Works Department.

"We went about the extraction as if the vehicle was serviceable," Haase explained. "Most of the vehicles we recover are serviceable, so we train that way."

After the derelict was removed from the Toilet Bowl, it was hauled to an access road for disposal. The Marines polished the area of bits and pieces of rusted metal and headed home.

The Toilet Bowl was clean.

Corps changes advance pay policy

Marines preparing to execute Permanent Change of Station orders are now eligible to receive up to three months advance basic pay, repayable in 12 months, according to ALMAR 88/85. Advance pay was repayable in six months, but this created a hardship for many servicemembers. The longer repayment schedule should alleviate many of the hardships associated with

the high costs of PCS moves; and under unusual circumstances or hardships, the repayment schedule may be extended to 24 months. Advancements in pay will not be routinely approved without considering the purpose for the financial assistance, which is to provide a servicemember with funds to meet the unusual expenses when moving.

Commanding officer approval is required for advance pay for lance corporals and below; while battalion, squadron, or detachment commanding officers must approve advance pay repayment schedules extending beyond 12 months for all Marines.

The financial status of the Marine will be thoroughly reviewed to determine justification and need for

advance pay, and the amount approved, which should correspond with the needs and the ability of the Marine to repay it without undue hardship.

All approved requests must be repaid before the member's expected separation date, and before the start of another PCS move.

Financial counseling is recommended to advise the Marine to consider drawing advance pay in two increments — one portion at the old duty station and the other at the new station. This will provide a more controlled expenditure of funds in relation to actual needs at both locations.

Further changes to the policy allow for Marines currently repaying advances to apply for an adjustment in their existing schedules in accordance with the revised procedures. Only uncollected amounts will be readjusted, and requests will be reviewed on a case-by-case basis.

For more information read ALMAR 88-85 and MCO 7220.211.

Combined services present concert in honor of Armed Forces Week

The Third Annual Armed Forces Week Combined Military Band Concert will be presented May 16, at the Neal S. Blaisdell Center Concert Hall.

Sponsored jointly by the Chamber of Commerce of Hawaii, the Mayor of the City and County of Honolulu, and the military services, the free concert will begin at 7:30 p.m.

The concert will feature a

combined musical performance by some 80 musicians from the U.S. Pacific Fleet Band, the 25th Infantry Division Band, the FMFPac Band, and the Air Force Band of the Pacific from Clark Air Force Base, Philippines. The bands will perform patriotic and marching music under the direction of four conductors.

The concert is open to the general public. Free tickets are available, on a first-come,

first-served basis, at military special services offices, the Chamber of Commerce of Hawaii, satellite city halls and the Veterans Administration Office in the Prince Kuhio Federal Building, or by calling 531-4111.

A performance for the general public will be presented May 19, at the Kapiolani Park Bandstand at 4 p.m. Tickets are not required for this concert.

National Police Week proclaimed



The President of the United States has proclaimed May 12-18 as "National Police Week," honoring all Law Enforcement officers nationwide.

Several events have been planned around the island. On May 12 the Police Fun Run begins at the Hickam AFB Parade Field for a 5.5 mile run.

The Main Exchange at Schofield Barracks will display various weapons, drug paraphernalia, confrontation management equipment and community involvement material. Monday and HPD will put on displays of their past, present, and future. Members of the

military police department will hand out the "Students Against Driving Drunk" agreement in an attempt to discourage juvenile/adult drunk driving.

A Police Golf Tournament is scheduled for Tuesday at the Hickam AFB Golf Course. The tournament is open to all law enforcement divisions on the island.

State-Wide Police Pistol Competition will be held at Wheeler AFB Wednesday. All military personnel, HPD and State and Federal law enforcement officers are invited to attend. Competition is scheduled for 8 a.m. at the Wheeler AFB Arms Range.

Behind every great leader . . . is a mother

To put a new twist on an old expression, "The hand that rocks the cradle rules the United States." And Mother's Day is an apt occasion to recall that many American mothers have long dreamed that a son of theirs would become president of this nation. Today, that aspiration might apply to daughters as well.

So far, though, American presidents have been sons, and their mothers have had a powerful influence on them. One writer and researcher writes out, "Altogether without exception, in the lives of our eminent statesmen, the influence of their mothers was

to permit any verdict at all, the Presidents of the United States have been . . . no matter if they did or did not engage in sporadic fist fighting . . . Mama's boys."

Another interesting point is that it was almost entirely the first-born offspring that became president. Reasons given for this fact is that in most instances, they received the best education, as well as the most maternal prodding. This latter point could be a sore spot for the sons involved.

George Washington, for example, was an only child, and his mother

Mother's Day



as possible. Our nation, however, owes her a debt of gratitude.

A scheme was devised in the Washington family to send the "Father of Our Country" off to be a seaman in the British Navy. But his mother, Mary Ball Washing-

ton, was against the idea and George eventually took up surveying and, then soldiering.

It was while in the Army that his mother wrote one of her few letters that still exist; it notes, in part: ". . . there was no end to my trouble while

Washington aboard the presidential plane on one Mother's Day, she remarked in a manner that "Give Them Hell Harry" would have been proud of: "Oh fiddlesticks! If I'd have known there was going to be all this fuss, I wouldn't have come."

The contributions of the presidential mothers can be summed up in an ode that Sara Delano Roosevelt received from Rose Sverdik, of the Bronx, New York, which begins:

"To you we are grateful, for you are the one To give our country such a noble son . . ."

the Department of the Navy or the U.S. Marine Corps. The appearance of advertisements in this publication, including inserts, does not constitute an endorsement of the firms, products or services advertised by the Department of the Navy or the U.S. Marine Corps.

What's inside

Military nurses pull double duty **A-3**

Armed Forces Rodeo **A-4**

May Day at Mokapu School **B-1**

Interservice bowling results **B-2**

Weekly items

Legal Assistance **A-5**

At a glance **A-6**

Salutes **A-7**

Sports shorts **B-2**

Ticket info **B-3**

Religious services schedule **B-4**

Movies **B-5**

Island Happenings **B-6**

What's Cooking **B-6**

Special services **B-7**

Hawaii Marine

The Hawaii Marine is an unofficial newspaper published every Thursday by RFD Publications, Inc., 46-016 Alaloa St., Kaneohe, Hawaii 96744, in the interest of the U.S. Marine Corps personnel in Hawaii. All advertising is arranged by the publisher, RFD Publications, Inc., telephone 235-5881. Circulation is 8,000.

All news content is prepared by the Joint Public Affairs Office, Marine Corps Air Station, Kaneohe Bay, Hawaii 96863, telephone 257-2179. Articles for publication must be submitted no later than noon Thursday for the following week's publication. The Hawaii Marine solicits articles and photographs from all Marine Corps organizations; however, it reserves the right to edit or rewrite material submitted.

Everything advertised in this publication must be made available for purchase, use or patronage without regard to race, creed, color, national origin, age or sex of the purchaser, user or patron. A confirmed violation or rejection of this policy of equal opportunities by an advertiser will result in the refusal to print advertising from that source.

Sun Press carriers delivering the Hawaii Marine may request a voluntary monthly contribution of \$1 from residents of government housing at the Air Station; however, the contribution is strictly voluntary and residents will receive the Hawaii Marine whether they voluntarily contribute or not.

WSPN
Hawaii

Who is Your #1 Radio Station?

Commentary

Military retirement: What it is; what it isn't

by MGySgt. G.E. Hajar

For the past year or so, the military retirement system has been under the gun. Few weeks go by without hearing, or reading, about what Congress is doing to our "retirement bennies." We are concerned; and we should be.

Countless articles have been written on the subject, and most of them present a perceived problem; but few, if any, offer any solutions. At times, we feel that we have been abandoned; that no one, in a position to make a difference, is doing anything to help dispel the myths about our retirement system. Not so!

Last month, the service chiefs testified before the House Armed Services Subcommittee on Military Personnel and Compensation, to discuss the military retirement system. All of them reassured us of their strong support.

During the hearings, many misunderstandings, and a host of myths, were brought into view; some of them were enlightening to the members of the subcommittee. From several reports and articles published, some interesting facts have surfaced.

Some people who work in these committees apparently have been misinformed on what is fact and what is myth, and the service chiefs are trying to "set the record straight."

We've always heard that after 20 years of active service we would receive "half" of our pay. Well, that really isn't so. What we really get is 50 percent of our basic pay, not including BAQ, BAS, clothing allowance, flight pay, special performance pay, etc.

Another misconception is the claim that military retirement is six times better than the average plan offered by civilian corporations. Studies have shown that, in reality, our retirement plan is 1.2 to 1.5 times better than the civilian pension plans, and with reason... service in the armed forces is not "average," by any means!

Few, if any, civilian occupations involve unlimited working hours. The often heard adage, "you're on duty 24 hours a day" is truer than you think. Read your enlistment contract, really read it; you'll be surprised on what you'll find printed on it.

One significant difference between us and the civilian worker is that we don't get "overtime pay," no matter how many hours we work, how many days a week. And pay is not, by far, the only difference; frequent transfers, time away from home and families, working on holidays, and countless other commitments set us apart from the civilian working sector.

So what is the bottom line? Interestingly enough, compensation received by more than 48 percent of all retirees is below the poverty level for a family of four. But this seemingly low compensation is no surprise when you consider that, in Fiscal Year 85, only six percent of the Defense budget was earmarked for retirement pay.

"In the last 20 years, defense (spending) has gone up 14 percent in real terms — that is, standard noninflated dollars — and nondefense expenditures have gone up 207 percent..." said Air

Force Secretary Verne Orr, during his recent visit here, as reported by the Honolulu Advertiser.

More often than not, military retirees are forced to get a job to be able to live in the standards they are accustomed to... and there is a reason for this. The median rank for all enlisted retirees is of a gunnery sergeant with 22 years active service. For officers, only five percent retire as colonels or above.

When the average retirement age is 42, the possibility of making ends meet without a job is pretty slim; especially with some of the cuts that are being made now. Since 1980, future benefits for the military have been cut by 15 to 20 percent.

Unlike a pensioned worker from the civilian sector, a service member's responsibility isn't over after 20 years of active service. More than 600,000 retirees are subject to recall if the "whistle blows," and retirees, who are a part of Defense Mobilization Plans, are from 22 to 86 percent, depending on the branch of service.

As you go past the "over 20" mark, however, your benefits do increase. Retirement after 20 years is usually 38 percent of your "real" pay; and after 30 years, it's 57 percent. But aside from the money and benefits, an important point is being missed...

The purpose of the present military retirement system is to keep a youthful and vigorous force, as it was

recognized in 1861, over 120 years ago, when the first General Retirement Law was enacted. Later, in 1916, our present Fleet Reserve was created, further solidifying the "youthful and vigorous" stance. In 1980, the Defense Officers Personnel Management, commonly known as DOPMA, made legislation history when it was enacted by HASC.

When all it's said and done, one significant point remains... our retirement system was, and is, designed to keep a strong, capable, ready and fit force and to retain experienced members... not to serve as an old age pension plan. So the next time anyone talks to you about the "unfairness" of our retirement system, or the age of our average retiree, tell them what it really is... step back, and watch their reaction.

We, as prospective military retirees, can help dispel any myths about our "corporation," because, as it looks now, it seems that our military forces are going to be "big business" for some time to come.



Mother's Day CARPET SALE!

This Mother's Day, treat your mom to a gift she'll really enjoy - luxurious, new wall to wall carpet! Whether it's carpet for one room or the entire house, you'll save up to 53% on a wide range of styles in colors sure to please your mom. Hurry in to Pearl Harbor or Barbers Point Navy Exchanges today for the best selection! Sale ends this Sunday!



SPECIAL SAVINGS ON THE PERFECT MOTHER'S DAY GIFT!

Solid Saxony Plush 100% nylon in 9 colors with Scotchgard® protection Sug. Retail \$13.95 SAVE \$6.00 \$7.95 per sq.yd.	Multi-Tone Sculpture Pile Stands up to what kids put down in 6 colors. Sug. Retail \$14.95 SAVE \$6.70 \$8.25 per sq.yd.	Multi-Tone Saxony Plush Mom will enjoy the easy to maintain pile in 10 colors. Sug. Retail \$15.95 SAVE \$6.45 \$9.50 per sq.yd.
New Wear-Dated® Sculpture Shimmering highlights accent this plush of Ultron nylon. Sug. Retail \$19.95 SAVE \$9.70 \$10.25 per sq.yd.	Antron® Sculpture Pile Made of soft, full yarns of Antron Extra Body nylon. Sug. Retail \$21.95 SAVE \$9.45 \$12.50 per sq.yd.	Solid Wear-Dated® Saxony Resists soiling and stains to make clean ups a breeze. Sug. Retail \$24.95 SAVE \$12.20 \$12.75 per sq.yd.
Thick, Luxurious Plush Thick and luxurious in 11 rich colors mom will love! Sug. Retail \$31.95 SAVE \$17.00 \$14.95 per sq.yd.	Elegant, Sculpture Pile Sure to impress your mom - made of 100% Antron nylon. Sug. Retail \$27.95 SAVE \$11.20 \$16.75 per sq.yd.	Soft, Luxurious Velvet Plush Super soft - made of Antron® Plus nylon in 10 colors! Sug. Retail \$29.95 SAVE \$13.20 \$16.75 per sq.yd.

Pearl Harbor Navy Exchange
 Interiors Plus
 Phone: 422-2767
 Regular Store Hours
 Mon-Sat 9:30am to 7:00pm
 Sunday 9:30am to 5:30pm

NAVY Exchange PEARL

Barbers Point Navy Exchange
 Rainbow Annex Furniture Store
 Bldg. 1141
 Phone: 682-5525
 Regular Store Hours
 Mon-Sat 9:30am to 5:00pm
 Sunday closed

NAVY Exchange BARBERS PT.

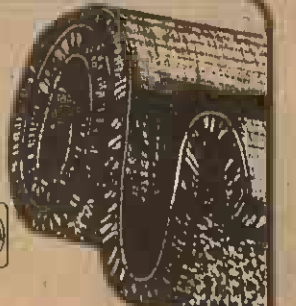
Carpet only. Pad and professional installation is available.

Sale starts May 2, 1985
 Sale ends May 12, 1985

Visa and Mastercard accepted
 Sorry no layaways



This ad was not paid for by the Navy Exchange



Today's military nurses: dedicated professionals



by Donna Bolinger
American Forces Information Service

Clara Barton, the Civil War's "angel of the battlefield" and founder of the American Red Cross, would be proud of her 1985 counterparts in military medicine. Not only have nurses become full-fledged members of the military medical community, they've also achieved recognition as professional military officers.

The professionalism and dedication displayed by Clara Barton and others like her during the American Revolution, the Civil War, and the Spanish-American War helped bring this about.

The road wasn't without obstacles. When talk first began before the turn of the century about establishing a permanent nurse corps, Army Surgeon General George M. Sternberg wasn't convinced it was a good idea.

Reluctant to have women serve with troops in the field, he urged against the added expense of "luxuries" needed by women, but not previously issued to men — bureaus, rocking chairs and other special items.

But during the Spanish-American War, more than 1,500 women served with the Army and Navy in the United States, Cuba, Puerto

Rico, the Philippines, Hawaii, China and Japan and on the hospital ship, "Relief." These women were hired as contract nurses during an epidemic of typhoid fever that left a severe shortage of men to handle patient care.

The Army surgeon general was so impressed with the service of these women that he wrote in his 1899 annual report:

"American women may well feel proud of the record made by these nurses in 1898-99, for every medical officer with whom they served has testified to their intelligence, and skill, their earnestness, devotion, and self-sacrifice."

Two years later, the Army Nurse Corps was born. The Navy Nurse Corps was formed in 1908, and the Air Force Nurse Corps in 1949, shortly after the Air Force was established.

Since Surgeon General Sternberg's 1899 report, thousands of military nurses have been decorated for service and bravery. Hundreds have been killed in the line of duty.

Military nursing offered women their first opportunity to join the Armed Forces and, later, to earn a commission. It has opened other doors as well.

In 1970, Anna Mae Hays, chief of the Army Nurse Corps, was promoted to brigadier general, marking the first time that a woman or a nurse attained the rank of general officer.

In 1972, Alene Bertha Duerk, director of the Navy Nurse Corps, and E. Ann Heffley, director of the Air Force Nurse Corps, were the first women in their services to reach star rank.

Men had cared for their fellow soldiers before the creation of the all-female military nurse corps, but it wasn't until 1955 that they again became practicing nurses.

The Army Nurse Corps was the first to admit men, and the other services soon followed. Today, males make up 28 percent of the Army Nurse Corps, and 10 percent of the Air Force Nurse Corps.

The nursing profession has become more complex than Clara Barton might have imagined. "Nursing has become sophisticated, because medicine has become so sophisticated," according to Colonel Delores Haritos, Air Force Nurse Corps historian.

Colonel Elizabeth Finn, a nursing consultant to the Army surgeon general, said the emphasis in nursing

The Navy Nurse Corps will celebrate their 77th birthday Monday with a cake cutting ceremony at Naval Medical Clinic Pearl Harbor.

today is on science, education, and specialization.

For military nurses, keeping up with these challenges is doubly difficult. "Today's military nurse has a dual role," said Haritos. "You not only have to be a professional nurse; you have to be a professional military officer."

That means a long progression of civilian nursing and military career schools, and long hours training for the skills needed in both.

So what is it that keeps nurses coming into military nurse corps?

Brigadier General Connie L. Slewitzke, chief of the Army Nurse Corps, thinks she has the answer: "Nurses feel strongly about the chance to serve their country. They are dedicated nurses who are proud to wear the uniform... and proud to be professionals. The combination is unbeatable."

Beware of mail rip-offs

The convenience of mail-order has led to many people being ripped off. But the prospect of shopping by mail can be less risky if common sense is used when desiring to get "something for nothing."

"Don't look for simple answers to complex problems, warns Honolulu Postmaster Michio Harada. Losing weight without exercise, or dieting and getting a \$350 color TV for \$50, are two examples he cited that attract consumers. If it sounds too good to be true, it probably is.

Harada offers these guidelines to help keep mail-order shopping a bit safer: Beware of exaggerated

claims or unusually low prices; don't be rushed... avoid offers that claim to be your "last chance" to get a bargain; keep a copy of the advertisement you ordered from; and never send cash, use a check, money order or credit card because these can be traced if necessary.

FOR THE FIRST TIME EVER, THE BEEF CENTER IS HAVING ITS BIGGEST SALE, IT'S CALLED

MID-NIGHT MADNESS!

TUESDAY, WEDNESDAY AND THURSDAY!

833-0020

DON'T MISS THIS OFFER!
CALL TODAY AND RESERVE YOUR CUTTING TIME AND COLLECT ON ALL YOUR BONUSES.

OPEN 'TIL MID-NIGHT

3 DAYS ONLY
May 14th, 15th & 16th

AT NO CHARGE!

- BACON..... 5 lbs.
- PORK CHOPS... 5 lbs.
- FRANKS..... 10 lbs.
- SAUSAGE..... 10 lbs.
- CHICKEN..... 30 lbs.

FREE 60 LBS.
With Purchase of Beef Order #2

YES! When you Buy Beef from US We give you the Pork and Poultry FREE

NOTICE: This sale starts at 10:00 a.m. Tues., May 14, 1985 and ends 12:00 p.m. Thur., May 16, 1985.

CALL TODAY FOR EARLY APPT. BONUSES!

NO MONEY DOWN
No interest, No carrying charges for 6 months First payment 45 days from date of purchase with approved credit.

DR. F. BROCK HOPKINS
(formerly of Enchanted Lake Animal Clinic)
ANNOUNCES
His relocation to:
AIKAHI PARK ANIMAL CLINIC
AIKAHI PARK SHOPPING CENTER
(Behind Firestone, Kailua)
HOURS:
MON., TUES., THUR., FRI.
8:00 AM-5:30 PM
WED., SAT.
8:00 AM-NOON
Dr. Hours by Appt.
254-1548

MORE THAN 100 ITEMS ON SALE!

Robert Mondavi Cabernet Sauvignon Reserve '78 750ml	Reg. 57.99	34.99
Robert Mondavi Cabernet Sauvignon '81 750ml	Reg. 16.69	11.29
Conn Braek Cabernet Sauvignon '79 750ml	Reg. 18.59	14.49
Robert Mondavi Cabernet Sauvignon '74 750ml	Reg. 44.99	29.99
Robert Mondavi Chardonnay '82 750ml	Reg. 17.99	12.99
Robert Mondavi Johannisberg Riesling '83 750ml	Reg. 10.89	7.99
Robert Mondavi Chenin Blanc '83 750ml	Reg. 10.29	7.49
Ockfener Backstein Icewine '83 750ml	Reg. 41.99	29.99
R.M. Plesporter Gold tropfchen spatlese '83 750ml.	Reg. 14.99	11.99
Bichot Chassagne Montrachet '82 750ml	Reg. 19.99	9.99
Bichot Meursault Premier cru '82 750ml	Reg. 22.99	10.99
Reve Moreau Mecon Blanc Villagers '82 750ml	Reg. 7.19	4.49
Louis Jadot Pouilly - Fuisse '83 750ml	Reg. 15.49	13.29
Chateau Laffite Rothschild '70 750ml	Reg. 199.99	129.99
Chateau Mouton Rothschild '75 750ml	Reg. 129.99	79.99
Chateau Mouton Rothschild '78 750ml	Reg. 93.99	63.99
Mateus Rose 1.5 L	Reg. 9.99	6.99
Pol Roger Rose 1875 750ml (Champagne)	Reg. 42.69	32.99

FREE! 50
Rib Eye Steaks to the First 50 customers setting appointments today, Fri. & Sat. for the hours of 8 p.m.-12:00 p.m. on the 14th, 15th & 16th
PURCHASE REQUIRED 3 OZ. STKS.

FREE! 30
Filet Steaks to the First 50 customers opening up a 6-mo. same as cash account prior to our 3 day sale!
PURCHASE REQUIRED 3 OZ. STKS.

U.S.D.A. CHOICE SPECIAL #1

260 LBS. FOR ONLY \$43.00 Per month for 6 months

FREE 60 LB. BONUS PACK

Example:
200 lbs. lean rib, plates & flank, at 1.29 lb. equals 258.00 plus free 60 lbs. Bonus Pack. Avg weight 160-350 lbs. 1C-1B, 3F, 3G Section on Beef Chart

30 lbs. GRADE A FRYERS
10 lbs. LEAN PORK CHOPS
10 lbs. SLICED BACON
10 lbs. All Meat HOT DOGS

ABSOLUTELY NO CHARGE
60 lbs. bonus with U.S.D.A. Choice Special #1

SPECIAL BONUS

40 LBS. FREE

PORK & CHICKEN w/SPECIAL #3

PORK 20 LBS. AND POULTRY 30 LBS. SPECIAL

50 LBS. NET WEIGHT ONLY \$44.50

Purchase Required

FOR ANYONE MAKING APPTS. BETWEEN 8 p.m.-12 p.m.

U.S.D.A. Choice Beef Order #2

Yes Folks You Receive all the cuts You get from a side!

250 LBS. AT .99 LB. Y Per month for 6 months NO INTEREST

Includes:
● ROUND STEAK ● T-BONE STEAK ● SIRLOIN STEAK ● CLUB ROAST ● RIB STEAK ● RUMP ROAST ● BEEF CHUCK ● GROUND BEEF, Etc.

GUARANTEED TO SATISFY!
If not completely satisfied with flavor or tenderness, return and your purchase will be replaced package for package and pound for pound. No time limit.

U.S.D.A. CHOICE SPECIAL #3

\$36.33 AS LOW AS

Per Mo. For 6 months TOTAL PRICE

EXAMPLE: 200 LBS. @ 1.09 lb. 9.08 per wk. for 24 wks. **40 LBS. FREE**

Includes: Sec. on chart A, B, 3G-3F ROUND STEAK, SIRLOIN STEAK T-BONE, ROASTS and GROUND BEEF, SOUP CUTS WTS 175 and up **\$218.00**

BONUS SPECIAL

40 LBS. FREE

PORK & CHICKEN w/SPECIAL #4

U.S.D.A. CHOICE SPECIAL #4

\$29.66 AS LOW AS

Per Mo. For 6 months TOTAL PRICE

EXAMPLE: 200 LBS. @ .89 LB. 7.42 per wk. for 24 wks. **\$178**

Includes: DELMONTE STEAKS, CLUB STEAKS, RIB STEAKS, ROASTS AND GROUND BEEF, SOUP CUTS. WTS. 175 & up Sec. D, C, 3F & 3G

ATTENTION:

WE BUY ALL OUR U.S.D.A. CHOICE FROM SWIFT PREMIUM CO. GRAIN FED MAINLAND BEEF. TRY US.

REGULAR HOURS
MONDAY-FRIDAY..... 10 AM-8 PM
SATURDAY..... 10 AM-6 PM
SUNDAY..... CLOSED

GROUND BEEF
.99c Per lb.
w/BEEF ORDER

CALL NOW
833-0020

Your One-Stop Beverage Center

MICHAEL'S LIQUORS
261-3433
515 Kalia Rd.
Across from Times Supermarket

BEEF CENTER
3131 N. NIMITZ HWY. (Airport Side)
HONOLULU
SERVING HAWAII FOR 3 YEARS
833-0020

U.S.D.A. FOOD STAMPS

★Free Coffee & Donuts★

10% DISCOUNT TO THE FIRST 50 CUSTOMERS & ALL MILITARY. 12% TO ALL REPEAT CUSTOMERS ALL BEEF SOLD HANGING WTS.

U.S.D.A. CHOICE GRAIN FED TRIMMED BEEF
YIELD 2
\$2.39 TO \$5.89

STEEK & ROAST ORDERS PRICE DEPENDS ON CUTS & WEIGHTS
U.S.D.A. PRIME BEEF AVAILABLE

Armed Forces Invitational Rodeo Bulls-29



A Parker Ranch cowboy from the Big Island ropes a calf in the calf-roping competition of the All-Armed Forces Invitational Rodeo.

Cowboys-1

Story and photos by SSgt. Bob Torres

Koa houli took the place of mesquite brush as cowboys, cowgirls, straw hats, tight jeans, bright scarves, calves and bulls were evident Saturday and Sunday at Barbers Point during the All-Armed Forces Invitational Rodeo.

Paniolos from neighbor islands, wahines, and servicemembers competed in the bareback bronc riding, calf roping, wahine steer and cutting, double mugging, double bronc, wahine barrel racing, dally team roping and bull riding.

With knees trembling, visible through leather chaps, a Marine settled himself on a bull in the chute on Sunday. As he tightened the cinch into his hand, the noise of the crowd meant little to him. "Take a ride, cowboy," encouraged a fellow cowboy.

With a final deep breath, Mitch Gaskin, mounted on Black Badger, waved his free hand and the chute gate

swung open, beginning the eight seconds until the end. Unfortunately, Gaskin's luck wasn't in the draw, as with two jumps, Black Badger dumped him on his back.

"When them cowboys go down, it's surprising what they'll do," said the rodeo announcer as Gaskin "crabbed" his way out of the arena.

"I was a bull yesterday," said a cowboy wearing a brown shirt and straw hat. "I don't feel so good today. He's the ugliest bull around. His name is Darth Vader, and he's got one horn that hangs down."

Bull riding is probably the most dangerous of rodeo events, and the crowd's favorite because of the risk involved. Not because the cowboy is likely to get gored, but because the rider takes a chance of getting stomped by the bull as he hits the turf. Ron Dewey, an Air Force cowboy, found that out as he fell off Andy Capp and was stepped on.

During the short break between the time that Dewey came off Andy Capp and the next rider, there was a disturbance behind the stands as bulls were being prodded in the pens.

"There's a bull riding a Marine," shouted the announcer as dust swirled and bull bellows could be heard. Finally, the Army's Greg Irvine mounted Darth Vader for the final ride of the rodeo. Seconds later, Irvine was sprawled on his back and Vader was being hustled out of the arena.

"Well that's it folks; bulls 29, cowboys 1," said the announcer. "It looks like the Air Force's, Max McDonald, the only cowboy to stay on for eight seconds, is the bull riding winner. We'll see you all at Waimanalo in June."

A worn straw hat in the middle of the arena spelled out the fate of some of the competitors for the day. Maybe in June the luck of the draw will change for a Marine cowboy.



The term "hanging loose" could well describe this rider's attempt to stay on a bull.



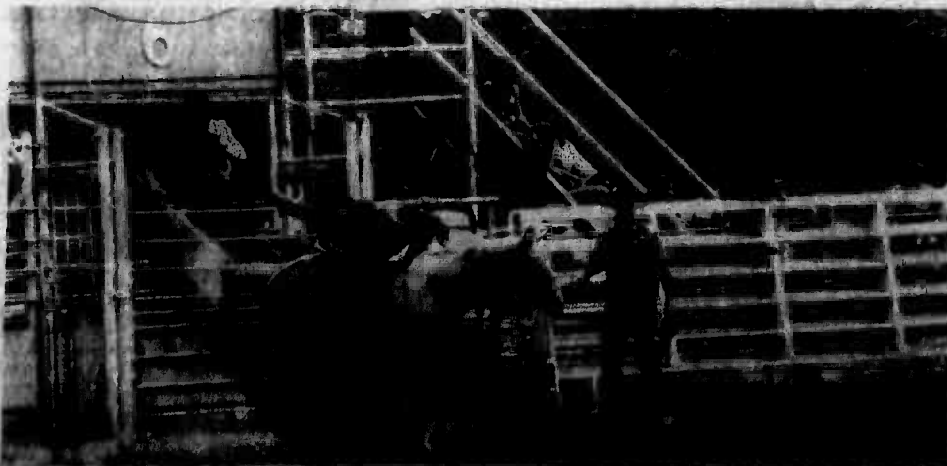
Joseph Abrue, a Hawaiian paniolo, grimaces as he flips a calf during the calf-roping portion of the rodeo. Roping the calf, downing it, and wrapping three legs with "piggin string" in the least time determines the winner of the event.



This cowboy was fortunate enough to land on his feet after being thrown seconds after coming out of the chute.



Young cowgirls perform acrobatic stunts on a horse, as part of the entertainment for the All Armed Forces Invitational Rodeo this weekend.



With spurs moving forward to rake the arena, this cowboy is anxious to begin his ride. Bucking, snorting and sunfishing, the horse managed to throw his rider under the needed 8-second ride.



A hat lying in the arena is testimony to the hard luck among some of the competitors.

Legal Assistance



EDITOR'S NOTE: This is the first in a continuing series of articles by the Joint Legal Services Center, which is intended to make you aware of potential legal problems you may face.

Legal Affairs

If you answer "no" to questions 1 through 7, or "yes" to questions 8 through 12, you may have a problem which might require legal assistance.

1. If you are married, do you have a will?
2. If you have a will, have you reviewed it within the past 12 months?
3. Did you file a state/federal income tax return for last year?
4. Do you have liability insurance on your motor vehicle?
5. If you shipped a vehicle

to Hawaii, have you registered it within 10 days of operating it on the streets?

6. If you sold or transferred a vehicle locally, did you file a Notice of Transfer with the Motor Vehicle Branch of the Department of Finance within 10 days of the sale or transfer?

7. Prior to moving into your rental unit, did your landlord make a written inventory noting all details of the condition of the premises and furnishings? If so, was it made in duplicate, signed and retained by you and the landlord?

8. Have you changed or attempted to change your legal residence within the past year?

9. Have you given someone a power of attorney that is no longer necessary?

10. Do your debts (less mortgage payments) total more than three times your monthly net pay (gross pay minus taxes, social security, etc.)?

11. Have you recently signed an installment contract, lease, or contract for personal, family, or household goods without thoroughly reviewing it or discussing it with an attorney?

12. Do you have income other than from your primary employment?

Free and confidential assistance is available to active duty servicemembers, retirees, and their families. Services are provided on a walk-in basis from 7:30 to 9 a.m., Monday through Friday, at the Joint Legal Services Center, building 256. Emergency service and special appointments can be arranged by calling 257-2160/2168.

DIRECT DEPOSIT SAVES TIME

NEW SOLID GOLD
 Turn on the Hits of the 50's-60's-70's
K-LEI 1130 RADIO
 Your Commuter Information Station

Free TEAZERS HAIR & BODY CARE **\$5 Off**

Blow Dry With Haircut & Shampoo Perms & Frosts

Women \$12 (Reg. \$17) Perm \$35 (Reg. \$40)
 Men \$12 (Reg. \$14) Frost \$25 (Reg. \$30)
 With Coupon Expires July 31, 1985

328 Uluniu St. Kailua
261-9778

Expires: 5/30/85

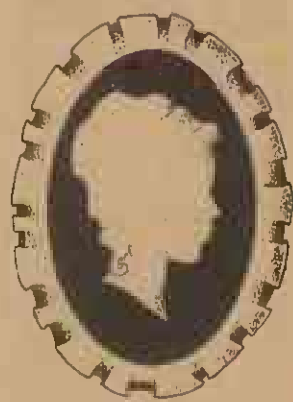
Stay in touch when you're out of town.

Touch a few buttons and program the top-of-the-line Panasonic PV-1730 video cassette recorder to keep up with your favorite shows, sports and specials. Then catch up at your leisure when you're back in town.

Viewing is a special treat with the PV-1730's advanced features like Hi-Fi Stereo Sound, Field-Still and Field-Advance, Variable-Speed Slow Motion, Omniseach, Unified Remote Control, and more. Ask for a demonstration of the Panasonic PV-1730—state-of-the-art performance in sight and sound.

Panasonic
 just slightly ahead of our time.

Available at your military exchange.



We're honoring Mom All Day!

Give Mom a special treat on her day. Bring her to Kailua's newest treasure — Cinnamon's Restaurant.

Special Mother's Day Menu:

Breakfast 7:00 am to 1:00 pm—Homemade Cinnamon Apple Coffee Cake. French Scrambled Eggs. Country Ham. Coffee or Tea—\$5.25

Lunch and Dinner

12:00 Noon to 9:00 pm—Cream of Spinach Soup or Salad. Prime Rib or Lobster-Seafood Thermidor En Pastry Shell. Stuffed Baked Potato. Fresh Spinach and Broccoli with Hollandaise. Chocolate Mousse or Fresh Strawberries En Meringue Shell—\$11.95

AND a special Gift for Mom
 Our regular menu is also available throughout the day. We serve wines and beer.



315 Uluniu Street in Kailua Square
 Phone 261-8724



We Keep You Revvin'

ALL SPECIALS EFFECTIVE MAY 1-MAY 12, 1985

EVERYDAY LOW PRICE

CARTON CIGARETTES

ALL DOMESTIC BRANDS AND SIZES

959

COMPLETE SELECTION OF IMPORTED BRANDS NOW AVAILABLE AT ALL 7-ELEVEN LOCATIONS

* Except Walkkl

WARNING: THE SURGEON GENERAL HAS DETERMINED THAT SMOKING IS DANGEROUS TO YOUR HEALTH

EVERYDAY LOW PRICE

CASE SODA

MIX N' MATCH ANY COMBINATION YOU DESIRE

799

•COKE •TAB
 •DIET COKE •SPRITE
 •CAFFEINE FREE COKE •SUGAR FREE SPRITE

24, 12 OZ. CANS

SUPER SPECIAL

MEISTER BRAU BEER 12 PACK

ICE COLD AND PRICED TO GO

449

A GREAT BEER AT A GREAT PRICE!

12 OZ. CANS

SUPER SPECIAL

2-LITER SODA

•COKE •DIET COKE
 •CAFFEINE FREE COKE
 •CAFFEINE FREE DIET COKE
 •SPRITE

119

SUPER SPECIAL

GALLON MILK
 MEADOW GOLD 1/2 gal TWIN PK.

299

EX-LARGE EGGS
 ROCKY ROAD FRESH ISLAND GRADE A AT OUR COST!

118

THIS WEEK'S COST!

No One Keeps You Revvin' Like



OPEN 24 HOURS EVERYDAY

ALL ITEMS PLUS TAX. WHILE SUPPLY LASTS ON OAHU ONLY!

THE SOUTHLAND CORPORATION

At a glance

'Return to Iwo'

"Return to Iwo Jima" a one-hour documentary, hosted by Ed McMahon, a retired Marine colonel, is scheduled to air on public Broadcasting Service, KHET-TV Channel 11, Memorial Day, May 27 at 9:30 p.m.

The documentary is a study of the historic World War II battle and a chronicle of the February 1985 return of American and Japanese Iwo Jima veterans to the island, for a reunion marking the 40th anniversary of the battle.

Dependent Dentistry

The Dependent Preventive Dentistry Program is scheduled for Saturday and parents should make an appointment for their children now.

Preventive dentistry consists of a dental examination, lectures on dental hygiene and nutrition, and the application of stannous fluoride. It does not include X-rays or dental care such as filling cavities.

The dental program for dependents is limited to relieving pain in severe emergencies and preventive dentistry only.

Giant Swap Meet

"Giant Swap Meet!" will be held from 9 a.m. to 1 p.m. on May 31 in the courtyard behind the 7-Day Store.

If you would like to make some extra cash from the things you no longer need, this is your chance. Registration for sellers deadline is May 28, and the fee is \$1. Space is limited, and is given on a first-come, first-served basis.

All sellers must be cleared through the Armed Services YMCA. For more information call Armed Services YMCA Outreach at 254-4965 or 254-4719.

Child Abuse Seminar

A special program on the prevention of child sexual abuse will be offered by the

Armed Services YMCA Outreach on Wednesday from 9 to 11 a.m. at bldg. 455, next to the 7-Day Store.

Emma Pavich, the island expert on child sex abuse, will talk about how to teach children to prevent being sexually molested or abused.

The program will include frank discussions about kinds of touch that are "ok" and not "ok"; activities with children that promote prevention of rape/abuse; and giving children the right to say "no." There is a fee of \$1 which can be paid at the program.

For reservations or information call 254-4965 or 254-4719.

HMR-161 reunion

The third annual reunion of Marine Helicopter Squadron (HMR)-161 will be held in Honolulu, May 24 through 26.

All active, reserve, or former officers or enlisted members of HMR-161, HMR (L)-161 and HMM-161 and their families are invited to attend.

For more information or to add names to the reunion mailing list, write: John A. Hoag, Reunion Chairman, c/o First Hawaiian Bank, P.O. Box 3200, Honolulu, HI 96847 or call 1-808-525-6108;

or Dick Blanc, Reunion Vice Chairman, 44-038 Kaimalu Place, Kaneohe, HI 96744 or call 1-808-247-6993.

VA benefits book

The Veterans Administration's "Federal Benefits for Veterans and Dependents Handbook" is now available.

The handbook outlines medical care, education, compensation, pension, insurance, home loan guarantee, job training and burial assistance.

In addition, the handbook lists the addresses and local telephone numbers of all VA offices, medical centers, national cemeteries, Viet-

nam Veteran Counseling Centers and other VA facilities.

The handbook can be purchased for \$2.50 from the Superintendent of Documents, Washington, D.C. 20402. The stock number is 051-000-00170-2.

Lose something?

The Provost Marshal's Office has 43 mopeds, two bicycles and one pool stick in its Lost and Found Department. For information call 257-2103/2104.

NOW APPEARING

ROB & GARY

Tuesday thru Saturday
9:00 PM-1:30 AM



WARD CENTRE
1200 Ala Moana Blvd.
536-6197

TONY TAM SING

Tuesday thru Saturday
9:00 PM-1:30 AM

THE Spindrift PASTA
SEAFOOD STEAKS
& COCKTAILS

KAHALA MALL
737-7944

NIGHTWING

Thursday thru Monday
9:00 PM-1:30 AM



PEARLRIDGE
Pearlridge Shopping Center
487-0048

MORTGAGE POINTS

When shopping for a new mortgage or refinancing to a lower rate check the following points.

- **FHA/VA Points:** Consistently the lowest price in Honolulu. 90-day lock in available on discount points.
- **One Year ARM:** Excellent program with a very low rate.
- **Service:** We'll come to your office or home to assist you with the paperwork. And you can be sure your loan will be processed fast.

For more information and current rate quotes give us a call. 524-5660.

The
Hammond
Company

1001 Bishop St. #1125, Pacific Tower, Honolulu, HI 96813

You've got what it takes.

Salem Spirit

*Share the spirit.
Share the refreshment.*

© 1985 R.J. REYNOLDS TOBACCO CO.



LIGHTS 100's: 10 mg. "tar", 0.8 mg. nicotine, KING: 17 mg. "tar", 1.3 mg. nicotine, av. per cigarette by FTC method.

Warning: The Surgeon General Has Determined That Cigarette Smoking Is Dangerous to Your Health.

LAW

Divorce • Adoption • Custody
Auto Accidents • Wills • Contracts

Allison Jacobs-Pendragon
Attorney at Law
A Law Corporation

24 HR. PHONE

536-2596

Member Hawaii Bar Assn.,
American Bar Assn., NAACP

1001 Bishop St.
Pacific Tower Suite 1535
Honolulu

RAIN GUTTERS SPECIAL

New, seamless aluminum rain gutters can be installed on your home for as little as

\$225
per linear ft.

(Most single story homes)
Available in Royal Brown or Gloss White. Guaranteed for 20 years.
Will not crack, chip or peel.

CALL NOW FOR
A FREE ESTIMATE



VISA

261-2647

Lic. #C12986

Salutes

EDITOR'S NOTE: Salutes recognizes individuals for their achievements and exceptional performance, and welcomes arrivals to Hawaii.

The information is compiled by Unit Information Officers in conjunction with Fleet Home Town News Releases submitted to the Public Affairs Office.



Army Certificate of Achievement

Staff Sergeant Anthony Baxton, 1st Marine Brigade, received an Army Certificate of Achievement, recognizing him for his superior

performance as the Marine Corps liaison to the U.S. Army Support Command Hawaii, from August 1984 to April 1985.

Promoted:
PFC D.E. Stewart
LCpl. R.E. Courier
LCpl. J.P. Gentry
LCpl. K.L. Grays
LCpl. P.K. Lutz
LCpl. R.D. Mitchell

Good Conduct Medal:
LCpl. T.R. Decker
Letter of Appreciation:
Cpl. E.S. Young
Sgt. R.P. Stafford

HMM-364
Welcome aboard:
PFC A.J. Craythorn

PFC E.F. Johnson
LCpl. J.A. Carlucci
LCpl. J.A. Kelly
LCpl. K.L. Kitner
LCpl. M.A. McAnally
Cpl. F. Caban
Cpl. T.M. Johnson

Promotion:
LCpl. D.L. Covey

HMM-463
Promotions:
Sgt. C.A. Decker
Sgt. S.A. Gallagher
Sgt. L.D. Staggs

Surfing champ

SSgt. Kelly Rhode, H&S Bn. Camp Smith, received a third place trophy during the Performance Hawaii North Shore Mobile Surfing Contest held at Haleiwa.

SOMS

Welcome aboard:
Cpl. T.L. Williamson

HQCo, 3dMar

Welcome aboard:
PFC S.E. Kane
PFC S.D. Kirk
PFC J.R. Lopez III
PFC J.A. Maxfield
PFC H.L. Ruiz
LCpl. W.J. Carty
LCpl. T.E. Iaudenslager
LCpl. P.J. Lonero
LCpl. D.F. Martek
LCpl. P.E. Plummer
LCpl. R.M. Quillen
LCpl. P.D. Vanwormer
Cpl. R.J. Lanners
Cpl. K.B. York
Sgt. R.F. Bacote
Sgt. S.R. Haskell
Sgt. D. Hutchinson
SSgt. J.R. Grice
SSgt. B. Jones Jr.
SSgt. B.T. Wilson
GySgt. H.C. Voorhees

2/3

Welcome aboard:
Pvt. Q. Chappell Jr.
PFC R.M. Moreno
PFC B.J. Roberts
PFC V.C. West
PFC M.A. Wolford
PFC D.D. Yeck
LCpl. R. Russ
LCpl. S.G. Young
Sgt. R.D. Brown
Sgt. V.D. Matthews
Sgt. S.M. Miller
Sgt. E.L. Olsen
HM1 A. Garibaldi
HM1 J.A. Riddle
GySgt. R.F. Boliger
GySgt. J. Granados
2nd Lt. R.K. Knapper

No more

waiting in line

with

Direct Deposit.

Mother's Day Special

Roast Turkey

Our tender Roast Turkey is served with Dressing, Cranberry Sauce, Candied Yam, Homemade Soup or Crisp Green Salad, choice of Rice or Mashed Potatoes, Corn-on-the-Cob, Cornbread, Coffee and even Pumpkin Pie for Dessert! Available at Lunch or Dinner.

7.95



WARD CENTRE
523-9333

KAHALA MALL
737-7938

PALI PALMS PLAZA
254-5861

Ample Free Parking
Also Open for Breakfast

ACCIDENT CASES

INCLUDING
WRONGFUL
DEATH CLAIMS
AND
CATASTROPHIC INJURIES

You may qualify if you or any member of your family has been injured.

524-5400

Law Offices of
GARY GALIHER & ASSOCIATES

No Charge For Initial Consultation
No Recovery - No Fee

333 Queen Street, Suite 800 Validated Parking

FREE SEASONAL DISCOUNTS

Choose one daily:
• TWO BREAKFASTS. Juice, rolls, coffee.
• or BIG CAR, Air-conditioned.

\$35 A Room and Car For Two

FROM FROM FROM FROM

KONA HUKILAU	\$35	KAUAI SANDS	\$44
KONA SEASIDE	\$39	MAUI HUKILAU	\$44
HILO HUKILAU	\$38	MAUI SEASIDE	\$49

Includes standard room for two. Single rate less \$2.
1985 Budget automatic compact with free mileage.

ROOMS ONLY from: \$22 single, \$25 double.

See your travel agent or call:
Sand & Seaside Hukilau Hotels **922-1228**

SOFT CONTACT LENSES

Extended Wear and Tinted Soft

From **\$129**

Daily Wear **\$79**

From

Includes: Lenses, Care Kit, Follow-up Care, and 90 Day TRIAL PERIOD.
Effective til 5/31/85

FAMILY EYE EXAMINATION PLAN

\$39

PRESCRIPTION GLASSES

From **\$49**

COMPLETE PROFESSIONAL VISION SERVICES
DEDICATED TO QUALITY AND SERVICE IN VISION CARE

Dr. Charles Dean
Optometrist

KAILUA
139 Hekili St.
261-9735



MOTHER'S DAY SPECIALS

MICROWAVE OVENS

PANASONIC • AMANA • TAPPAN • LITTON

NEW

Model 56-1014

\$138

TAPPAN

O'KEEFE & MERRIT

FREE COOKBOOK
(Value 12.95) w/any oven purchase

DEMO MODELS

PANASONIC GENIUS 5930
SUG. RETAIL \$399

299

CEILING FANS

CASABLANCA • HUNTER • RICCAR

Professional Fan Installation at discount prices

Prices start at **\$39.95**

52" 5 BLADE

- 3 SPEEDS
- W/REVERSE AIR
- 5 YR. WARRANTY

30% OFF ALL LIGHT KITS

Not Exactly As Shown

LIGHT KIT EXCLUDED

• OVER 1000 FANS IN STOCK

• MANY BRANDS

• LARGE DISPLAY

• UTILITY & DECORATORS

• NO LAYAWAYS

This is just "one example"

\$88.95

Sug. Retail \$269**

SEWING MACHINES

SINGER • RICCAR • VIKING BERNINA

IF YOU EVER WANTED A BERNINA, HERE'S YOUR CHANCE!

SAVE ALMOST \$800

SALE \$998

ON BERNINA'S TOP-OF-THE-LINE 930-E

• Vari-Lock

• Decorative Stitching

• Zig Zag

• Makes Button Holes

• Demo Model 'BERNINA: 802

COMPLETE SET W/ CARRYING CASE, ACCESSORIES & 20 Year Warranty

BERNINA 930-E

\$299

SEWING MACHINE COUPON TUNE-UP SPECIAL CLEAN, OIL, & ADJUST.

18.75

COUPON ENDS 5/30/85

HOOVER VACUUMS

Upright Convertible

Convenient Built-in Carrying Handle • 16' Cord w/Wrap • All Steel Handle • POWERFUL 4.8 AMP MOTOR

9 Qt. Disposable Bag • Full-Time Edge Cleaning • No Shock Hood (Non-Conductive Surface)

Steel Agitator • Two Dirt Driving Brushes Lift Dirt Into the Path of Suction, Deep Cleans Carpeting!

\$59

HOOVER SELF-PROPELLED CONCEPT ONE

No Pushing No Pulling

Work sover Motor driven brush gets dirt you can't see.

\$168

TWO-MOTOR Celebrity TM QS QUIET SERIES

DUAL EDGE BRUSHERS!

3.7 HP

- 14 qt. bag
- Power nozzle
- Cord rewind 53199

\$228

PACIFIC SURPLUS & DISTRIBUTORS

262-8131 455-9010

1247-F KAILUA RD. 98-593 KAM HWY.

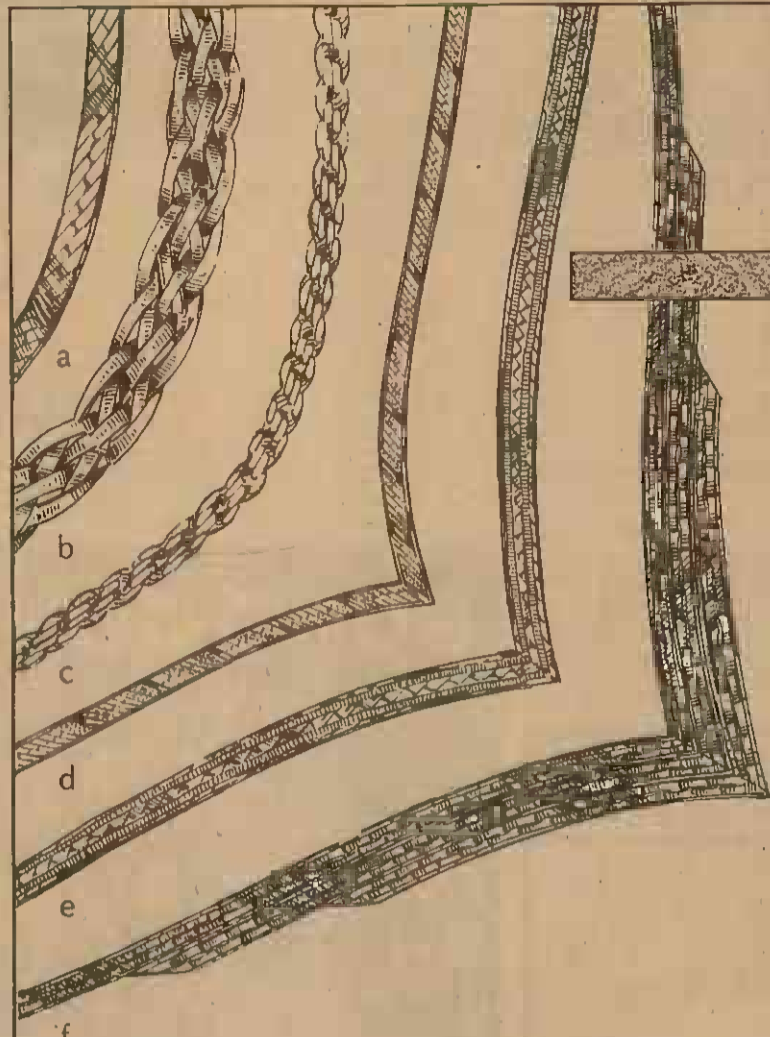
KAILUA IN THE 7-11 COMPLEX PEARL CITY BY DOMINOS PIZZA

NEW HOURS:
MON.-FRI. 9:30-6:00 p.m.
SATURDAY 9:30-5:00 p.m.
SUNDAY 11:00-5:00 p.m.
WEDNESDAY CLOSED

SALE ENDS 5/12/85



Zales has more to give her for Mother's Day.



ALL 14 karat gold chains and chain bracelets

SAVE 50%

- a. Triple bevelled herringbone chain From 7" to 24", Reg. \$80 to \$260, NOW \$39.99 to \$129
- b. 16" Six-braided herringbone neckchain Reg. \$400, NOW \$199
- c. Diamond-cut solid rope chain From 18" to 24", Reg. \$500 to \$680, NOW \$249 to \$339
- d. 16" Diamond-cut bevelled herringbone V-neckchain Reg. \$100, NOW \$49.99
- e. 16" Raised herringbone V-neckchain Reg. \$160, NOW \$79.99
- f. 16" Tri-color fashion V-neckchain Reg. \$400, NOW \$199

Diamond fashion rings



1/4 Carat T.W.
Reg. \$550, NOW \$399

SAVE 25-40%

Selected styles

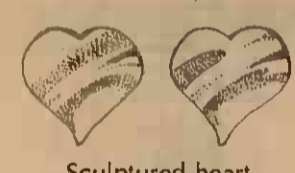


1/2 Carat T.W.
Orig./Reg. \$850 - \$925, NOW \$599

14 karat gold earrings

SAVE 50%

Selected styles



Sculptured heart

Reg. \$60
NOW \$29.99



Tri-color sparkle drop



Sculptured square

Reg. \$80
NOW \$39.99



Beaded sparkle drop



Fancy shrimp hoop

Reg. \$100
NOW \$49.99



Shiny dome

Diamond solitaire rings, pendants and earrings.

SAVE 25%-33%

Selected styles



1/4 Carat ring, Reg. \$550, NOW \$399
1/2 Carat ring, Reg. \$1250, NOW \$899
1 Carat ring, Reg. \$2750, NOW \$1999



1/4 Carat T.W. earrings, Reg. \$350, NOW \$259
1/2 Carat T.W. earrings, Reg. \$1075, NOW \$699
3/4 Carat T.W. earrings, Reg. \$1675, NOW \$999



1/4 Carat pendant, Reg. \$500, NOW \$369
1/2 Carat pendant, Reg. \$1250, NOW \$799
1 Carat pendant, Reg. \$3000, NOW \$1999

Mother's Day is Sunday, May 12.

Zales Diamond Card™ offers you low monthly payments, apply for it now. We also accept VISA, MasterCard, American Express®, Carte Blanche and Diners Club. Ask about Instant Credit.

Sales prices effective on selected merchandise. All items subject to prior sale. Carat Weights may vary +/- .02 pts. Illustrations enlarged. Sale ends May 12, 1985.



Windward City

Shopping Center
Corner of Kaneohe Bay Dr. & Kamehameha Hwy.

Something for Every Mom On...

MOTHER'S DAY

Pakalana Fashions
Windward City Shopping Center

Entire Stock
20%-40% Off
on
Every Day Wear Dresses
and
Graduation Dresses



Pakalana Fashions - Across Foodland's Main Entrance!
Phone: 235-4799 - Hours: 10:00 a.m. to 6:00 p.m. - 7 Days a Week.
MAJOR CREDIT CARDS WELCOME!

Free Mother's Day Gift At McDonald's® of Kaneohe

Bring Mom to McDonald's of Kaneohe for breakfast on Mother's Day and she will receive a surprise gift (while supplies last).

Mother's Day May 12...

IT'S A GOOD TIME FOR THE GREAT TASTE.



McDonald's of Kaneohe
480 Kaneohe Bay Drive
Kaneohe • Phone 235-2911



© 1985 McDonald's Corporation

IN TODAY'S ARMY, THERE'S UP TO \$25,200 FOR YOU IN COLLEGE MONEY.

It's like getting a scholarship for being a good, smart soldier and serving your country well. Here's how it works:

you contribute \$100 a month from your first full monthly Army paychecks. (It's not difficult. Your food, lodging and medical are all paid for.)	\$ 1,200	You.
The New GI Bill contributes \$9,600 for a 3- or 4-year enlistment.	9,600	New GI Bill contributions.
The New Army College Fund contributes \$1,400 for a 4-year enlistment.	14,400	New Army College Fund.
Effective July 1, 1985.	\$25,200	Yours for College.

Of course, there are qualifications you must meet, tests to be passed, but if you intend to go to college someday, the best possible route could be the Army. You'll gain knowledge, experience and a sense of self-worth that will be with you the rest of your life.

To find out more about this new way to get to college, see your local Army recruiter today.

Call Kaneohe Recruiting Station, 235-6491
ARMY.
BE ALL YOU CAN BE.



Receive a SUMMER FUN COUPON

PARADISE PARK

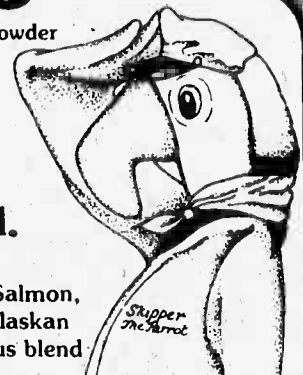
for every purchase made at Windward City Shopping Center merchants will give away a FREE Summer Fun Coupon for children 4-12 or \$2.00 off a regular adult pass to Paradise Park

Skipper's

Seafood, Chicken 'n Chowder

Discover our New Menu for a Fresh Approach to Seafood without Getting Soaked.

Visit Skipper's for a special treat. Choose a Skipper's Combination of Shrimp, Clams, Salmon, Chicken, Poki, or Fish 'N Chips (Mahi or Alaskan Cod) or try our Admiral's Plate - a delicious blend of Scallops and cream sauce.



TREAT YOURSELF TO A **FREE CHOWDER**

With Purchase of any HOUSE SPECIALTY Choose any House Specialty and enjoy a cup of Skipper's famous chowder absolutely FREE with this coupon.

Not to be combined with any other coupon. Coupon must be presented before ordering. Coupon expires May 21, 1985.

99¢ SALAD BAR

LUNCH 11am-3pm (with coupon)
DINNER 3pm-Closing (with coupon and the purchase of one House Specialty)
Treat yourself to Skipper's island fresh salad bar with your favorite fruits, vegetables and dressings.

Not to be combined with any other coupon. Coupon must be presented before ordering. Coupon expires May 21, 1985.

Skipper's

PEARL CITY
Times Square Waimalu
Ph: 486-8869
Valet parking available - Wed-Sat.

Seafood, Chicken 'n Chowder

TWO LOCATIONS

KANEOHE
Windward City Shopping Center
Ph: 247-8846

Two For One Special



It's Twice As Nice

Lose Pounds and Inches
Reduce Stress and Tension

Personal Instruction
Aerobic Conditioning
Strength Training
Cardiovascular
Weight Training
Physical Therapy
Sports Injury Treatment

•Steam Room
•Supervised Nursery
•Aerobic Classes
•Hydro Therapy Whirlpool
•Aquatic Classes
•Indoor Heated Swimming Pool

•Therapeutic Massage
•Indoor Jogging Track
•Nutrition Guidance
•Life Cycles
•Free Parking



Mademoiselle®
Spa Lady

Call now **235-3511**

38 MERCHANTS TO SERVE YOU!

- | | | | | |
|-----------------------------------|--------------------------|------------------------------------|---------------------------------------|-------------------------------|
| 1. Al Phillips The Cleaner | 7. Clik Photo Hawaii | 16. Koza Sushi | 23. Pakalana Hawaii | 30. Taco Hut |
| 2. Alex Jewelers | 8. Especially For You | 17. Kaneohe Travel Agency | 24. Paradise Sun 'n Surf | 31. Thunderbug |
| 3. Associate Financial Services | 9. Fashion Fabrics | 18. Kaneohe Windward Twin Theater | 25. Pay 'n Save | 32. Town Pump |
| 4. Baskin-Robbins Ice Cream Store | 10. First Chevron II | 19. Mademoiselle Spa Lady | 26. Pioneer Federal Savings & Loan | 33. Video Showcase |
| 5. Bruce Pandleton Income Tax | 11. Foodland Market | 20. Maqoo's Pizza | 27. Radio Shack | 34. Windward Bowl |
| 6. CIT Financial Service | 12. Gem Department Store | 21. McDonald's | 28. Skipper's Seafood & Chowder House | 35. Windward City Shoe Repair |
| | 13. Honda Florist | 22. Mrs. Fields Chocolate Chippery | 29. Supercuts | 36. Dr. Norman Yang, DDS |
| | 14. Kin Sun Enterprises | | | 37. Yellow Brick Road |
| | | | | 38. Kaneohe Veterinary Clinic |

Windward City 
Shopping Center
Corner of Kaneohe Bay Dr. & Kamehameha Hwy.

PARADISE PARK

SUMMER FUN COUPON

Good for One CHILD ADMISSION OR **FREE** REGULAR ADULT ADMISSION

\$2 OFF REGULAR ADULT ADMISSION

NOT TO BE USED WITH ANY OTHER SPECIAL OFFER
COUPON EXPIRES AUGUST 30, 1985

Defective strollers

Anyone who bought a folding stroller made by the Welsh Company of St. Louis, MO., and sold by the Army and Air Force Exchange Service, should take a look at the seat-belt mounting. The stroller, model 7021/7022, sold at AAFES retail stores for \$20.50.

Following a customer complaint, tests were run by AAFES Quality Assurance technicians which disclosed a defect in strollers that had seat belts mounted on the

seat with rivets. The holes made in the seat belt straps for the rivets to fit through were too large. As a result, if a child were to move the belt could easily pull away from the rivet. Some model 7021/7022 strollers have the seat belt sewn into the seat. These strollers are not affected by this recall. Owners of these defective strollers are welcome to take them back to their local main exchange for a refund.

LAW OFFICES OF JOSEPH KINOSHITA & ASSOC.

EXPERTS IN

- BUSINESS LAW
- FAMILY LAW
- PERSONAL INJURY
- REAL ESTATE

Initial Consultation **FREE** For Accident Cases

820 Mililani St. 98-211 Pali Momt St. Suite 615

523-5060/488-5055

clip coupon **\$2 PITCHER of BEER** clip coupon

With The Purchase Of One Pitcher At Regular Price & This Coupon

EVERYDAY - ANYTIME

CHER'S BUNKHOUSE

Waimanalo Shopping Center

RESERVATIONS 259-8247

EXPIRES 5/15/85

AVIATION ENGINEERING SUPPORT

RAIL Company is a rapidly expanding engineering services company providing field engineering support to the Department of the Navy. We have several opportunities for individuals with Navy/Marine Corps aviation experience in the areas of aircraft logistics and maintenance. Retiring E/6-E/9's and Warrant Officers having experience working with Navy Aircraft (F-18, F-14, F-4, S-3, etc.) as well as components or support equipment (avionics, engines, ATE, GSE, aerial photography, weapons systems, etc.) are ideal candidates for present and future positions at RAIL. If interested, please send your resume to Mr. Joe Adams.

RAIL Company
5333 Mission Center Road
Suite 316
San Diego, CA 92108

Equal Opportunity Employer.

Neck Pain? Backache?
Don't Suffer Needlessly!

Pacific Chiropractic

TRAINED IN 5 RECOGNIZED TECHNIQUES INCLUDING "LOW FORCE"

COMPLETE PHYSICAL EXAM

X-RAY FACILITIES

DR. JEANNE MICHAELS
D.C.

602 KAILUA RD. NO. 207, KAILUA
(between Cornet & Hardware Hawaii-2nd floor rear)
NO CHARGE FOR BRIEF SPINAL ANALYSIS

261-0831

CONTACT LENS & EYE CARE SPECIALIST

PROFESSIONAL EYE EXAMS

- CONTACT LENSES
- Comprehensive Eye Examination
- Glaucoma & Cataract Testing
- Blurred Vision/Evaluation
- Headaches
- Children's Vision/Evaluation & Training/Learning
- Disability
- Sports & Industrial Vision
- Contact Lenses (All Types)
- Extended Wear/Asigmatic/Colored Gas Permeable/Bifocal/Monovision
- Contact Lens Cleaning Service
- Orthokeratology
- Fashion Eye Wear/Tints

A Private Practice Offering Personal and Preventative Vision Care for the entire Family where Quality is Affordable.

Specialists in **HARD-TO-FIT CONTACT LENSES**

- \$79 Standard Soft Lenses
- \$119 Soft Colors
- \$129 Extended Wear Soft

Fees include lenses, care kit and all initial follow up care with Dr. Endo. Satisfaction Guaranteed.

Dr. Edwin Y. Endo
OPTOMETRIST
Newtown Square, Suite 105
98-1247 Kaahumanu St.
Aiea, HI. 96701
487-5500

WINDWARD MALL

Saturday, May 11

MOM'S NIGHT

Open 'til 9pm!

Over 60 great stores will stay open LATE so you can find the perfect gift for mom!

Bring more evening of entertainment. Ebe

Kam Highway & Haiku Road, Kaneohe

Hours:
M-F: 10am - 9pm
Special Sat. Hours: 9:30am - 9pm
Sun.: 10am - 5pm

2 FOR 1 PINT SALE

BUY 1 PINT OF YAMM SOFT FROZEN YOGURT \$1.99 AND GET THE 2ND PINT

FREE

WITH THIS COUPON

LIMIT 1 COUPON - TOTAL OF 2 PINTS

OFFER GOOD ONLY ON 11 & 12

WINDWARD MALL

Mother's Day at The Great American Shoe Store

A dazzling assortment of white ties, bows and open toes in woven and perforated leathers. Hurry in for best selections.

Kiney's
The Great American Shoe Store

WINDWARD MALL
2nd Level, 20 HAWAII WING

Sale 12⁹⁹

Sale 16⁹⁹

Sale 12⁹⁹

Koolau Pets

Windward Mall

MOTHER'S DAY GIVEAWAY!

Three (3) \$100 Gift Certificates will be given away to three lucky Moms.

Enter your Mom's name at our store before 1 p.m. on Sunday, May 12, Mother's Day.

Winning will be held at 1 p.m. Must not be present to win...

Name: _____

Address: _____

Phone: _____



Queen Terese Cruz, escorted by King Gene Gutierrez and her royal entourage, is led to her seat of honor during the "May Day is Lei Day" program at Mokapu Elementary School.



Queen Terese Cruz performs a hula dance.

'May Day is lei day'

Mokapu school has a birthday

Story and photos by SSgt. Bob Torres

All hues and colors of the rainbow were evident at the Mokapu Elementary School, Friday, as children in Hawaiian garb presented a "May Day is Lei Day" program.

Children from kindergarten through sixth grade danced, hulaed and sang their way into the audience's hearts as small bodies, with youthful smiles, writhed and sang under the sunny Hawaiian skies.

As the program began, Lea Gonsalves, a fourth-grade teacher, greeted the crowd with a welcoming chant. Children and guests stood for the opening ceremony and the beating of gourds and strumming of ukeleles filled

the air. Gladys Naitoh, principal of the school, welcomed special guests who included, Brigadier General and Mrs. O.K. Steele, Colonel and Mrs. Charles D. Robinson, and other dignitaries.

One of the special guests, Mileka Pomeikai Kincaid, a Niihau native, was introduced as a Lei Day Queen in 1936. Naitoh welcomed former and retired teachers of the school, including Cathy Steele who taught as a primary grade teacher.

"Because we're also celebrating the school's 35th anniversary, we tried to get in touch with former faculty members to join us," said Naitoh. "It is a very special occasion for us."

The smiles and grins of

young children burst into song as Leo Nani Mokapu and the sixth-grade ukelele ensemble led the "May Day is Lei Day" song accompanied by the audience.

The May Day queen was introduced and the royal procession began. Queen Terese Cruz was escorted by King Gene Gutierrez and Royal Kahili bearers, Chris Milligan and Jake Feeney, led by the royal crown bearer, Sajid Gonzales.

As Terese Cruz was crowned by her father, First Sergeant Thomas Cruz, BSSG, the assembled crowd clapped and cheered the queen.

"Is she getting married or something?" queried a small voice from the second row of a kindergarten class.

Queen Terese came

forward and hulaed to "I Am Hawaii" as her special presentation to the audience. The second-grade classes did their rendition of Hawaii's State Song and the fourth-grade classes did a rendition of "Kawika."

Then, one of the hits for the day took the place of honor. The kindergarten class moved to the center of the royal grounds and portrayed their "Hawaiian Rainbows." First grade students came next with "Haru Ga Kita," followed by third-graders presenting "Itu Ipo."

Fifth grade students danced to "Tinikling" and then sixth grade students did the "May Pole Dance" and for the finale, everyone participated in the school's "Hawaii Aloha."



Eliza Grisby, a kindergarten pupil, dances a hula during the "May Day is Lei Day" program at Mokapu Elementary School Friday.



Mileka pomeikai Kincaid, a native of Niihau, was the special guest during the "May Day is Lei Day" program. Kincaid was a 1936 Lei Day Queen.

Hawaii Marine

May 9, 1985

Good nutrition essential for athletes

Good nutrition is necessary for peak athletic performance. With the exception of an increased need for calories and water, the basic dietary requirements for athletes are no different from nonathlete. There are no special foods, food regimens, or vitamin supplements that enhance athletic performance.

The athlete's diet should contain enough calories for energy, fluid for water balance, and a variety of foods from the Basic Four Food Groups. Misconceptions concerning the nutrient needs of athletes can hinder athletic performance and

jeopardize overall health.

Ideally, the athlete's diet should have 15 percent of total calories from protein sources, 30 percent from fat, and 55 percent from carbohydrates, different from the typical American diet which is higher in protein and fat and lower in carbohydrates.

Water is the most critical nutrient for an athlete as dehydration will significantly decrease athletic performance. Drinking water before, during and after an event is strongly recommended.

Thirst is not a good indicator of actual fluid need.

The best way to check dehydration is to monitor body weight frequently. A general rule is to drink 14-16 ounces of water for every pound of body weight lost.

Protein foods are not good sources of energy during athletic events or exercise. The best meal before an athletic event is something such as spaghetti rather than a lean steak. The meal should be eaten two to three hours before the event so it will be digested and out of the stomach before the competition.

Carbohydrate foods are the

best source of additional calories for an athlete. Complex carbohydrates, such as whole grains, breads and cereals are better than simple carbohydrates, such as sugar, honey or corn syrup.

Fat is important to a well-balanced diet. But since it is digested slowly, it is best to limit fat intake during training and competition.

Heavy sweating during exercise can cause a loss of sodium and potassium. Sodium is plentiful in our diets as table salt and in the composition of food.

Hawaii Polo Club to hold two matches here

Four teams from the Hawaii Polo Club will hold two matches at Platt Field, here, Saturday at 2 p.m., and again on June 1.

Opening ceremonies will begin at 2 p.m., followed by the first match at 2:15. At 3:15, entertainment will be provided between matches with the second match starting at 3:45 p.m. Closing ceremonies start at 4:45 p.m.

The Persian sport was introduced to Hawaii in 1866 with limited success until 1964, when it was professionally organized. Hawaiian polo is enjoying increased popularity in its

22nd season.

Some of the basic rules and characteristics of the game are:

The playing field is 300 yards long, 160 yards wide; and the equipment is balls, mallets and ponies;

Playing periods are seven-minute "chukkers" with up to 30 seconds in overtime; and the team has four players — No. 1 and 2 are offensive and No. 3 is a roving player, who is responsible for both offense and defense, No. 4 player is basically defensive.

Scoring is anytime the ball crosses the line between two goal posts.



Deborah Muzzy



Sheryl Gobell



J. Stockman



Royal Goulet

Marines compete in Interservice bowling

The 1985 Interservice Bowling Championship was recently completed at the Naval Air Station Whidbey Island, Wash.

Women Marines placing in the doubles event was Master Sergeant P. Murray and Sergeant C. Reyes in fifth place with a total pinfall of 2,128.

Tenth place went to Sergeants C. Gordon and J. Stockman with a total pinfall of 2,051.

In eleventh place was Staff Sergeant D. Diferdinando and Gunnery Sergeant S. Meneely, with total pinfall of 2,043.

Male Marines placing in doubles were staff Sergeant J. Dillon and Gunnery Sergeant T. Oaks with a total pinfall of 2,479.

Eighth place was captured

by Corporal B. Genz and Staff Sergeant W. Reynolds, with a total pinfall of 2,400.

In ninth place was Staff Sergeant A. Loumakis and Corporal S. Hickey with a total pinfall of 2,347.

The Marines' men's team came in third with a total pinfall of 7,273, while the women's teams came in fourth with a total pinfall of 6,227.

Corporal Steve Hickey, MCAS El Toro is one of the four top male finishers and is competing in the ABC Masters Tournament in Tulsa, Okla.

Kaneohe Bay finishers were: Royal Goulet with 6,244 pins and 173 average; Deborah Muzzy, 5,955 and 165; Sheryl Gobell, 5,685 and 157; and Stockman with 6,181 pins and a 171 average.

Sports Shorts

Rainbow 10K

The Tropic Lightning Strider's Annual Rainbow 10K Road Race will be held May 18 at 8 a.m., with the start and finish at Schofield Barracks' Stoneman Field.

The flat and fast 6.2 mile course, will have water points and mile-split times available. A \$10 fee includes a racing singlet. Company-sized military units can participate at 25¢ per runner if running in formation.

Unique awards and gift certificates will be awarded following the race. Military units running in formation will be eligible for awards if 25 percent of their total strength participates.

For more information call Mark Lopshire at 655-4115 or 486-5834.

Tennis championships

Sergeant Kevin Gincheau, HqCoBde, defeated First Lieutenant John Nisbet, HMM-262, 6-4 and 6-3 to win the Spring Tri-Annual Open Division Tennis Championships.

Corporal Bradley Lamie and Lieutenant Dan Kruezer, both from H&S BSSG, were the other finalists in this double elimination event.

Horseshoe Tourney

A Horseshoe and Wrist-Wrestling Tournament will be held Saturday at 11:15 a.m. Sign up at the Athletic Office, Station Gym, as soon as possible.

Swim Team

The Aulea Swim Team is holding try-outs at the Kailua Parks and Recreation pool, behind the Library, from 5:15 to 6:15 p.m., Monday through Friday.

If you are interested in competitive swimming, stop by the Rec Center or call 262-7545 for more information.

'Catfight'

The Spring Station Cat-Fight has been rescheduled for May 15, with a shotgun start at 1 p.m.

Entry deadline is tomorrow at 3:30 p.m. Entry is \$7. An awards and pupu party will be held after play.

Running Festival

Entries are now being taken for the Honolulu Marathon Association's 1985 Running Festival, set for Memorial Day weekend.

Events scheduled are a 32-mile relay for club members; the Festival Mile; the Honolulu Marathon; and the Ultramarathon. For more information, call the Honolulu Marathon Association at 535-1111.

stores, gyms, health clubs, running clubs, clinics, and sporting goods stores. Information may also be obtained by calling the Honolulu Marathon Association office 734-7200.

There will be 20 divisions for the relays, and three age divisions each for men and women in the Festival Mile.

The four Ultramarathon events, 100 miles, 100 kilometers, 50 miles and 50

kilometers, are being conducted by the Hawaii Kai Fun Runners and Tinman Unlimited.

Entry deadline for the relay, Festival Mile, and Centipede Championships is

Tuesday; for the Ultras is May 17.

Golf

The next unit Intramural Golf tournament will be held

May 15. Units are encouraged to enter as many golfers as possible.

Registration is from 9:45 a.m. to 12:30 p.m., at the Golf Course. Tee times will be from 10 a.m. to 2 p.m.

"It's the best way to stay in touch."

As a Marine in Reserve you could keep up with your military training, earn extra money, and keep building a strong future with a fine retirement plan. But perhaps the best part of being a Marine Reservist is being back with the team.

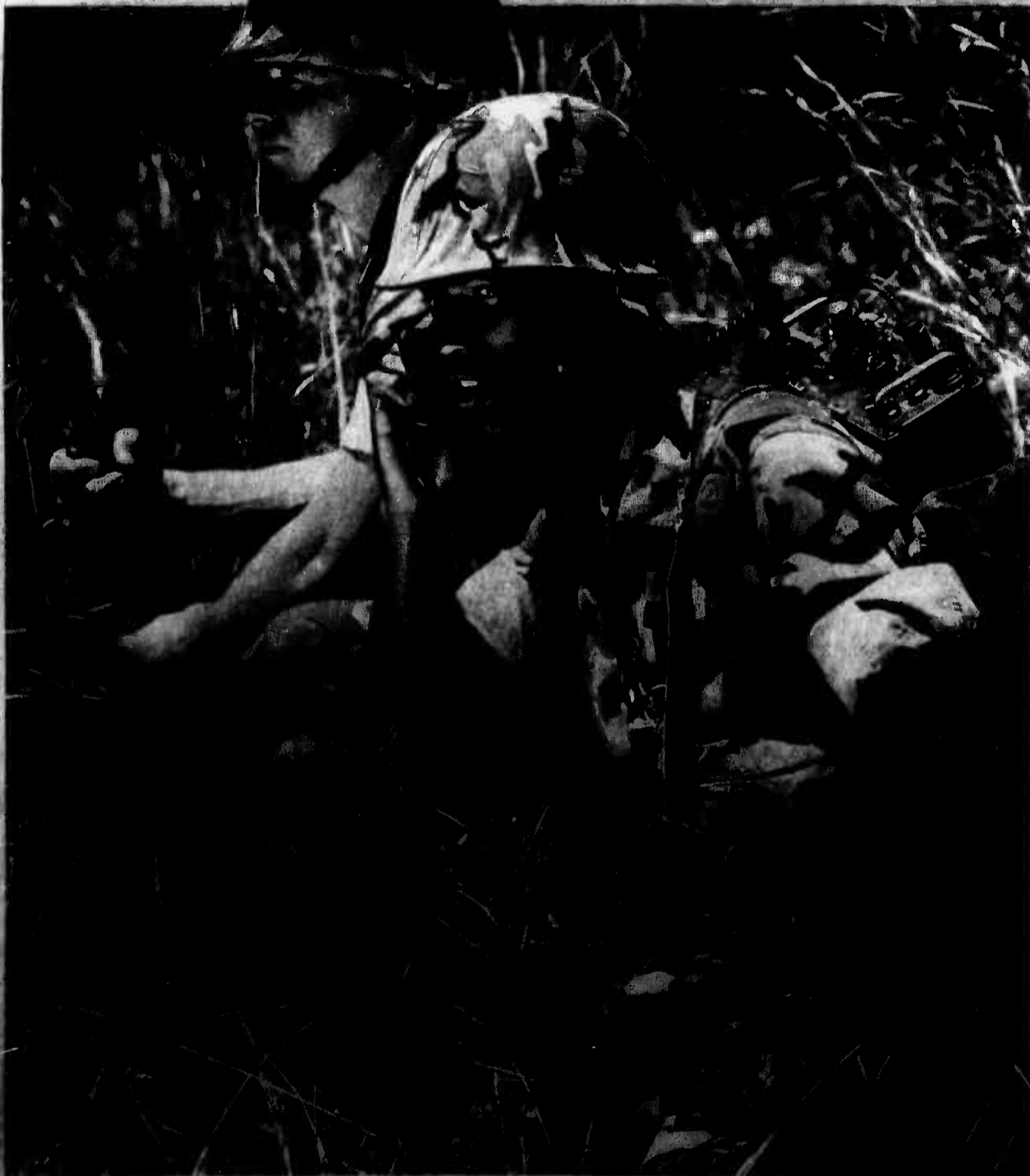
For two days each month, you'll receive good money

and train as a Marine. Your two weeks of annual training will take you to different places in the United States and the world. So, if you're thinking about leaving the Marines or have already left, do yourself a favor and check out the Marine

Reserve. You'll find it's more than just an interesting part-time job. It's a great way to stay in touch with the best fighting team there is—The Marines. Call 800-423-2600, toll-free. In California, 800-252-0241.

MARINE RESERVE

Reserve your place on the team. The few. The proud. The Marines.



NRS Volunteers receive awards

These Navy Relief Society volunteers recently received hourly awards during the Navy Relief Award Ceremony. First row, (l to r) are; Lynn Sack, 500 hours; Bea Williams 100; Helen Courneya, 100; Joan Mausser, 600; Letty Noble 500; Cindy Brierley, 100 and Mary Wagner, 100.

The second row are: Jane Mills, 300 hours; Lauryne Harvey, 100; Judi Stevens 2,000; Susan Wells, 100; Susan Griffin, 300; Nancy Thomas 100 and Maureen Nealis, 300.

A Certificate of Appreciation was also awarded to Helen Courneya.



24 years not enough for Navy Relief's 'Auntie Pat'

by Sgt. L.C. Brooks

"Auntie Pat" may be a more appropriate name and title in a family setting, but Patricia Perry, office manager of the Kaneohe Branch Navy Relief Society, is called that by many who have known her during the 24 years she's worked for the organization.

Perry began working for Navy Relief in January 1961 at NAS Barbers Point as a bookkeeper. She transferred to Pearl Harbor in December 1977 where she worked as a secretary/clerk.

She crossed the island in May 1979 as bookkeeper for the society, and was promoted to her current position in 1983.

Volunteers from the Kaneohe and Pearl Harbor branches recently held a surprise party for Perry in

honor of the 24 years she's worked with Navy Relief.

"It was such a surprise," she said. "I felt like 'Queen for a Day.'" During the party, Perry received at least 15 leis among other gifts.

Gifts from workers at the society are treasured by Perry because military life is so transient that most volunteers serve at a specific branch for a limited amount of time. It is this part of Perry's job that's hardest to bear. "It hurts me to say goodbye... I can go back to day one and tell you about all of my dedicated volunteers," said Perry.

Training volunteers is just one reason why Perry has been with Navy Relief for so long. "I love everything the society represents. The changes are coming fast for this 'old lady,' but I know it's



Patricia Perry

all for the benefit of the young service family," she said.

Perry intends to be a part of these changes. Her future plans include staying with the society for 16 more years. "I always said that, once I passed the 20-year mark, I'd give them another 20 years," said the Oahu native.

Although Navy Relief is a large part of Perry's life, she's had a chance to develop hobbies. "Believe it or not, I love to skate," she said. "I'm

not afraid and I'll challenge anybody. I've outskated a lot of my children's friends."

Watching old movies is another of her pastimes. "I love the old movies on Saturdays," she said. "I especially like the ones that make me cry."

Family ties are also a very important part of Perry's life. She and her husband, Stanley, who has worked for a sugar company for 34 years, have a son, Reggie, and a daughter and son-in-law, Donna and Jack. Her 16 month-old grandson is the joy of her life, according to Perry.

Over the years, Perry has contributed much to Navy Relief and her sincere dedication to her job is evident to all who have worked with her.

Windward Marathon slated for Sunday; run thru Air Station

Long distance runners will get a chance to go for a personal record during the Fifth Windward Marathon, to be held Sunday starting at 5 a.m.

The 26.2-mile road race will start at Enchanted Lake, continue through Lanikai, Kailua and will include parts of the Air Station. The race will end at Enchanted Lake.

Runners will come into the Air Station through the Mokapu Rd. gate, turn on Harris Avenue; hook around Lawrence Dr., turn on Cushman Avenue, turn on Middaugh Street; back on Harris to Mokapu. The course will then turn on "A" Street, to First Street, onto Third Street, to Seldon Street, turn on Harris onto Mokapu, and back out the gate.

There will be aid stations every two to three miles, and medical assistance will be at the aid stations and at the finish line. Packet pickup will be at Enchanted Lake Park

on May 11, from 10 a.m. to 2 p.m. All finishers will receive commemorative T-shirts.

Awards will be given to the first three male and female finishers, and the first three male and female finishers in the Masters category (over 40). There are five age categories, and a wheelchair and race walker division.

To encourage the runners along the course, residents are being asked to come out and support the event by cheering them on, providing a water hose for a quick cool-down, and doing anything to make the grueling run a little more bearable for the participants.

The course will start on Keolu Drive, run through Wanao, Makealani Place, Aummoe, Kailua Road, Aalapapa Drive, Mokolua Drive, Kainalu Drive, Kainui Drive, Oneawa Street, and Mokapu Road into the Air Station.

Ticket info

The Special Services Ticket Sales Office has tickets for the following events:

Julian Lennon — Waikiki Shell; May 10; \$16.70 and \$11.70.

Ice Capades — NBC; May 10-19; \$11.20, \$9.70 and \$7.70.

Baseball discount tickets. Books of 20 are \$25 for all home games. Single tickets \$1.25.

Honolulu Boys Choir Mother's Day Luncheon — Sheraton Waikiki Hotel; \$25.70 and \$20.70.

Search for Talent — Waikiki Shell; May 11, \$7.70. Professional Championship Rodeo — Waimanalo; June 15-16; Family tickets \$15, adults \$7.50.

Call Margaret at 254-3304, or stop by building 219, for more information.

"DRY EYE"

relieve with cool, wet... **Lavoptik** at your local Pharmacy

Rick DEES' WEEKLY TOP 40

Rick Dees is 1984's biggest success story in personality radio. Listen to his ingenious wit, his irresistible charm, his cast of comedic characters week after week. **Sunday Morning at 10:00 A.M. 93FMQ**

Windward Enlisted Club
M.C.A.S. KANEOHE BAY
Now Appearing

Tues. thru Sat. —Also— Country/Western Favorite **"DIXIE"** Every Sat. Nite For More Information Telephone: 257-2873

PHIL'S GOURMET & WILD BILL'S COUNTRY VARIETY MUSIC FEATURING CHANCY - LIVE

Sweet on Mom
May 9th, 10th, 11th
3049 Ualena Street
836-5775

MILITARY PERSONNEL... \$28
Visit neighbor islands at special hotel rates... from \$28 for 2 comfortable rooms in attractive and convenient locations.

MILITARY OR KAMAAINA RATES <small>(All rates are for double occupancy)</small>	Standard rooms from \$28-39
	Superior rooms from \$32-44
	Deluxe rooms from \$38-48

KONA LAGOON Kona at Keauhou/From \$28
HILO HAWAIIAN Hilo/From \$32
MAUI BEACH Kahului, Maui/From \$37
MAUI PALMS Kahului, Maui/From \$28

For reservations and information, see your travel agent or call **Hawaiian Pacific Resorts** 531-5235 From neighbor islands, toll-free 1-800-272-5275

Executive offices: 1150 S. King St., Honolulu, HI 96814
Need a car? Ask us about our "Room & Vroom," a super value hotel and car package with cars provided by DOLLAR RENT A CAR. Reservations may also be made through ALOHA AIRLINES, phone 836-1111.

Skippers®
Seafood, Chicken 'n Chowder

A Salute to the Military in Hawaii
BUY ONE, GET ONE FOR 1/2 PRICE! (with coupon below)

Choose a Skipper's Combination of Shrimp, Clams, Salmon, Chicken, Poki, or our Fish 'N Chips with Mahi or Alaskan Cod.

99¢ SALAD BAR
LUNCH 11am-3pm (with coupon)
DINNER 3pm-Closing (with coupon and the purchase of one House Specialty)
Treat yourself to Skipper's island fresh salad bar with your favorite fruits, vegetables and dressings.
Not to be combined with any other coupon. Coupon must be presented before ordering. Coupon expires May 23, 1985.

Skippers®
Seafood, Chicken 'n Chowder
PEARL CITY Times Square Waimalu Ph: 486-8669 Valet parking available — Wed.-Sat.
KANEOHE Windward City Shopping Center Ph: 247-8648
TWO LOCATIONS

Religious services schedule

MCAS Kaneohe Bay 257-3552/3506

Weekdays
11:45 a.m. — Catholic Mass

Saturday
6 p.m. — Catholic Mass
7 p.m. — Catholic Reconciliations

Sunday
7:30 a.m. — Catholic Mass
8:30 a.m. — Protestant Liturgical Communion
9:30 a.m. — Catholic Mass
9:30 a.m. — Protestant Sunday School
10:45 a.m. — Catholic CCD Classes
11 a.m. — Protestant Worship
1 p.m. — Samoan Congregation

The Station Chapel is located in the right rear corner of the Marine Corps Exchange, building 1090. Sunday School and CCD are held in the pre-school area, building 1391.

Camp H.M. Smith

477-5098

Sunday
8 a.m. — Catholic Mass
9:30 a.m. — Protestant Worship
9:30 a.m. — Protestant Sunday School

Monday
11:30 a.m. — Bible Study

Wednesday
6:45 a.m. — Prayer breakfast

Naval Station Pearl Harbor

471-3971

Weekdays
11:30 a.m. — Daily Catholic Mass

Saturday
6 p.m. — Catholic Mass

Sunday
7:30 and 9:30 a.m. — Catholic Mass
8:30 a.m. — Protestant Communion Service
9:30 a.m. — Protestant Sunday School
11 a.m. — Protestant Worship Service
7 p.m. — Protestant Gospel Service

Holidays
11:30 a.m. and 5 p.m. — Catholic Mass

Aloha Jewish Chapel, Pearl Harbor

471-0050

Friday
8 p.m. — Shabat

Saturday
9:30 a.m. — Shabat and Torah Study

Sunday
9 a.m. to noon — Religious School

If You've Been Arrested For

DRUNK DRIVING

You Should Consult An Attorney...

Call

NOAH D. FIDDLER

Attorney At Law

For FREE Initial Consultation

820 MILILANI ST.
HK BLDG. STE. #612

545-7400

415A ULUNI ST.
KAILUA

261-3233

1985 R.F. H. YAMAS HORACCO CO

Bankrupt businesses

The California Attorney General has recently filed suit against "Bargain Furnishings" and "World Financial Services" for illegal business and collection practices. As a result of this suit, the two organizations have filed for bankruptcy.

business dealings with the firms and still has payments left on contracts should see a legal assistance officer to determine if the contract can be terminated or avoid paying illegal finance charges. For more information call the Kaneohe Bay Legal Services Center at 257-2168.

COUPON SPECIALS

FREE BRAKE INSPECTION

Offer expires 6/14/85 With any of the following service specials

OIL & FILTER SPECIAL

Includes up to 5 quarts oil and Motorcraft FL-1A Oil Filter

\$14.95

TIRE ROTATION SPECIAL

\$4.95

AIR CONDITIONING SPECIAL

Includes charging system and checking for any leaks

\$9.99

"DO-IT-YOURSELF'S SPECIAL"

20% OFF LIST PRICE

On Ford authorized remanufactured Products — Brake Shoes, Disc Pads, Alternators, Starters See us today & check on the big savings on Ford Remanufactured Products.

Offer Expires 6/14/85 Rmcheck Available



THE PRICE IS RIGHT.

LIFETIME SERVICE GUARANTEE

IF YOU EVER NEED TO HAVE YOUR FORD, LINCOLN, MERCURY OR FORD LIGHT TRUCK FIXED, YOU PAY ONCE & WE'LL GUARANTEE THAT IF THE COVERED PART EVER HAS TO BE FIXED AGAIN... WE'LL FIX IT FREE, FREE PARTS, FREE LABOR. COVERS THOUSANDS OF NOTHING ELSE COVERS SO MUCH FOR SO LONG. SEE US NOW.



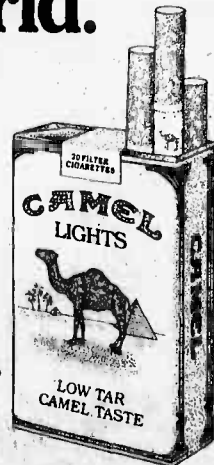
CUTTER FORD ISUZU

98-015 KAM HWY., AIEA 487-3811 HOURS MONDAY-FRIDAY 7AM-5:30PM

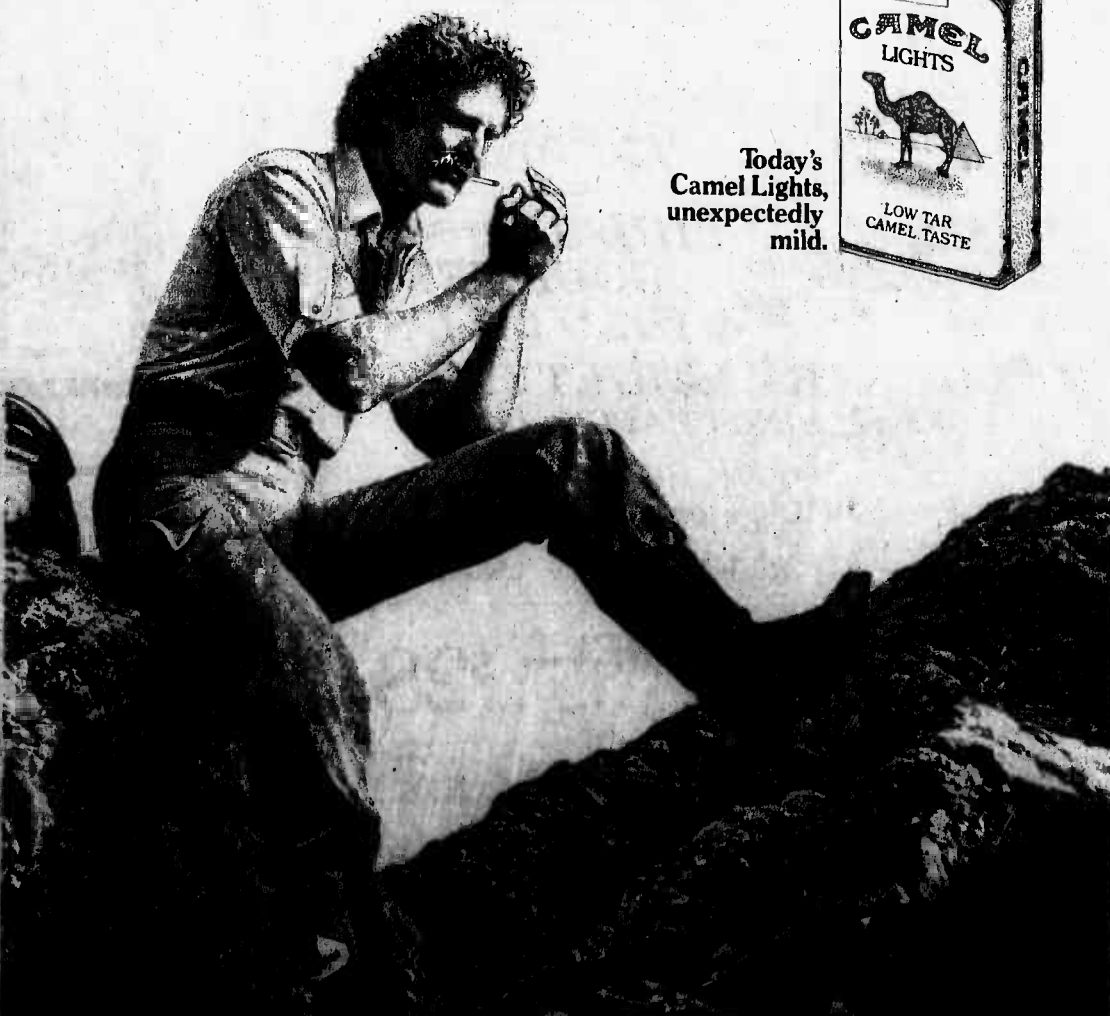
9 mg. "tar", 0.8 mg. nicotine av. per cigarette by FTC method.

CAMEL LIGHTS

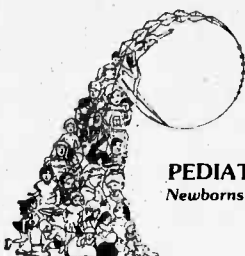
It's a whole new world.



Today's Camel Lights, unexpectedly mild.



Warning: The Surgeon General Has Determined That Cigarette Smoking is Dangerous to Your Health.



New Office convenient to Kaneohe, Kailua and Waimanalo

PEDIATRIC CARE

Newborns to Adolescents

BOB ANDERSON, M.D.
PALI PALMS PLAZA
970 N. Kalaheo Ave.
Suite C-103
Kailua, HI 96734
(808) 254-6474

Participating Physician with
HMSA, Medicaid, Champus
Board Certified, American Board of Pediatrics
Fellow in the American Academy of Pediatrics

CLIP & SAVE

COMPLETE EXAM X-RAYS, EXAM & TEETH CLEANING

ONLY **\$19.00**

REGULARLY \$100.00

This certificate entitles "our new patients" to an initial examination and cleaning with all necessary X-rays for only \$19.00.

IMPORTANT! Offer Expires. All Calls for Appointments must be made by May 31, 1985. Actual Appointment can be later.

Each family may use only one coupon, however, the coupon you choose is good for all family members. This certificate will not apply to any DDS-82 or DentaGuard members.

OPEN SATURDAYS

FREE PARKING



DENTAL GROUP

254-1541

970 N. KALAHEO AVE, PALI PALMS PLAZA 1ST FLOOR
Across from Aiea Shop. Cr. Behind the "Yum Yum Tree"

CLIP & SAVE

"Sunday's Mothers Day. Think Mom would like the BOURBON HOUSE?"

"You bet! shell love their special tableside buffet!"



Bourbon House
1111 Kalia Rd.
Honolulu, HI 96813
254-1541

Movie schedule

Movies start daily at 7:15 p.m. For more information call the Station Theater at 257-3668.

Tonight & Tomorrow

Country (PG). Jessica Lange, Drama. Jewell and Gill Ivy have worked on the farm that has bound their family together for generations. When government bureaucrats threaten to take away, they decide to fight back.

Saturday & Sunday

City Heat (PG). Clint Eastwood and Burt Reynolds, Mystery spoof. A mystery set during the 1940's. Clint Eastwood and Burt Reynolds act for the first time together as friendly adversaries.

AAFES recalls products

The Army and Air Force Exchange Service is recalling a Bunny Hopper pendant, an "Easter Chick or Rabbit" and a Doorway sit-up and pull-up bar.

A costume jewelry Bunny Hopper pendant, manufactured by Treasure Masters Corporation, is being recalled as a precaution because some customers may perceive this time as a toy, even though it is marketed as costume jewelry.

The item consists of a bell, spring and small lead-like metallic bunny head on a strong necklace. The bunny head and spring will slip over the knot at the end of the string with every little force, and both are small parts. The pendant has no age level recommendation, but was intended for children older than 3.

AAFES also encourages customers who purchased a rubber "Easter Chick" or "Easter Rabbit" to examine it for possible metal objects.

The six-inch toys, Style No. 3609, were manufactured by the Easter Unlimited Company in Hong Kong. Customers who purchased these toys should examine them for metal objects by removing the toy's head.

This can be done by gently squeezing the head while holding the body. If metal objects are found in the hollow head, the toy should be returned to the nearest AAFES main exchange for a refund.

A voluntary precautionary recall of a doorway sit-up and pull-up Bar has been initiated by AAFES and Scorekeeper Sporting Goods of Menlo Park, Calif.

AAFES quality assurance personnel tested the bar after a customer was injured. They found the instructions for installing the end brackets were insufficient. If the end brackets are not properly installed, the bar can come loose. The item is Model No. SP100, CRC 9775701. It sold for \$9.75.

Customers wishing to return the bar for a full refund should do so before May 16. AAFES exchanges have already removed them from the shelves.



Buy U.S. Savings Bonds

Monday
Surprise Classic

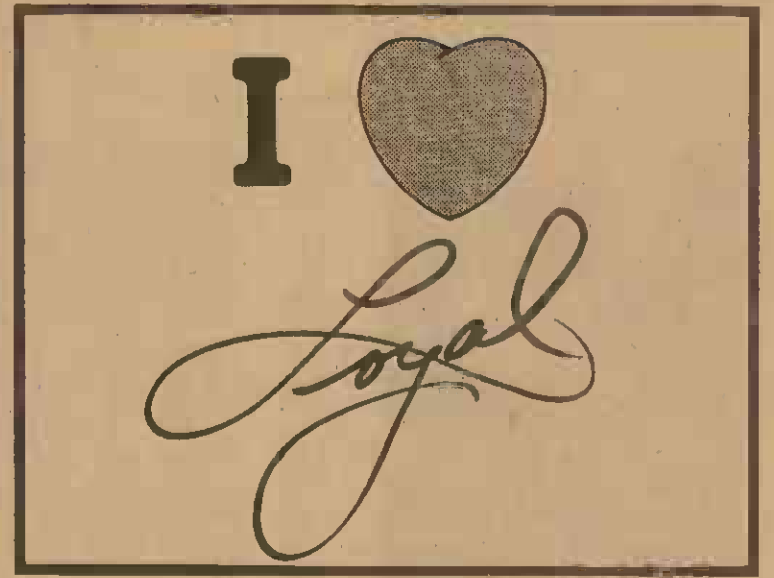
Tuesday & Wednesday

Toy Soldiers (R) Jason Miller. Drama. The United States government won't go to war over a handful of students held captive by vigilante killers who are members of a "death squad". Five friends of the students can make the difference between freedom and death.

LOW COST AUTO INSURANCE

528-1620

ARCHER-REID ENTERPRISES
1221 KAPIOLANI BLVD., #808
Multiple Company
Insurance Agents



HONSPORT

Division of Oshman's Sporting Goods Inc.

ONCE A YEAR SALE!

For sports and play, fitness and fun, no one makes sure you're the winner like Honsport. And during our famous Once-A-Year Sale, we make sure you get the lowest prices of the year, with savings of up to 60% on top name sporting goods and sportswear. So if you're into sports, get into Honsport, but hurry, Honsport's incredible Once-A-Year Sale is just that — Once-A-Year!

FITNESS	TENNIS/GOLF	CAMPING/HUNTING
<p>DP Fit for Life STANDARD EXERCISE BIKE 79⁹⁹ Reg. 129.99</p> <p>ARISTOCRAT GOLDEN BARBELL/DUMBBELL SET 110 lb. #CS-10 79⁹⁷ Reg. 99.00</p> <p>LEATHER WEIGHT-LIFTING GLOVES 11⁹⁷ Reg. 14.99</p> <p>weslo BODY SHOP 360 with butterfly 129⁹⁷ Reg. 189.99</p> <p>MARCY "HULK" WEIGHT BENCH 79⁹⁹ Reg. 109.99 #304</p>	<p>PRINCE PRO 90 TENNIS FRAME! FIVE DAYS ONLY 54⁹⁷ Reg. 89.99</p> <p>Wilson CHAMPIONSHIP TENNIS BALLS 177 Reg. 2.79 Limit: 6 cans per customer</p> <p>Wilson YOUR CHOICE! 69⁹⁷ Reg. 109.99/179.99 Wilson Graphite Force, Cobra, Javelin Tennis Frames</p> <p>PINNACLE GOLF BALLS 15⁹⁷ Reg. 18.99</p> <p>Wilson SWINGLITE GOLF CLUBS 15% lighter, than conventional golf clubs 197⁹⁹ Reg. 399.99 3 Woods 8 Irons.</p>	<p>igloo 48 QT. ICE CHEST FIVE Days Only 24⁹⁷ Reg. 36.99 With rebate direct to you from Igloo, your net cost: 20⁹⁷</p> <p>Limit: 2 per customer</p> <p>CABIN TENT 8x10 89⁹⁹ Reg. 139.99</p> <p>MR. MEAT SMOKER Offers six distinct cooking methods 49⁹⁷ Reg. 69.99</p> <p>RUGER 10/22 SEMI-AUTOMATIC RIFLE 109⁹⁷ Reg. 149.99</p> <p>WINCHESTER ANGLE/EJECT RIFLE 30/30 Cal. lever action 169⁹⁷ Reg. 199.99</p> <p>WINCHESTER AMMO 2.97 22 L.R. Solid Pt. 9.97 30/30 Cal.</p>
<p>ATHLETICS</p> <p>DP Fit for Life BACKBOARD, GOAL & NET #40-0223 39⁹⁷ Reg. 49.99</p> <p>Wilson "POINTMAKER" BASKETBALL 14⁹⁹ Reg. 18.99</p> <p>INNOVATIVE TIME YOUR CHOICE! 9⁹⁹ Reg. 19.99 • Pedometer • Hand-Held Stop Watch • 3 Meter Alarm • Chronograph</p>	<p>SPORTSWEAR</p> <p>STUBBIES SHORTS The favorite shorts for easy, leisure wear. 13⁹⁷ Reg. 19.00/20.00</p> <p>BROOKS GRAPHLEX RUNNING SHOES 27⁹⁹ Reg. 46.99</p> <p>Spot-bilt MONSTER PLUS FIELD SHOES 24⁹⁹ Reg. 34.99</p> <p>PONY MID-HI LEATHER COURT SHOES 36⁹⁹ Reg. 61.99</p>	<p>WATERSPORTS</p> <p>SPEEDO WOMEN'S SWIM SUITS Choose from a large selection of lycra suits. 19⁹⁹ Reg. 41.99</p> <p>MEN'S LYCRA SWIM WEAR 10⁹⁹ Reg. 21.99</p> <p>MOREY KRANSCO SCI BOOGIE BOARD 29⁹⁹ Reg. 39.99</p> <p>SEVYLOR TWO PERSON KAYAK 104⁹⁷ Reg. 131.99 #K-59</p>

HUNDREDS OF ADDITIONAL ITEMS ON SALE IN EACH DEPT.
Prices good thru June 16, except where noted, while quantities last. We honor VISA - AMERICAN EXPRESS - MASTERCARD.

Island Happenings



Hale Koa Presents

Hawaii's own "Lady of Love," Loyal Garner, returns to the Hale Koa Hotel's Banyan Tree Showroom in May, June, and July.

Loyal will sing some of her favorite songs and best known hits, such as the foot-stomping Paniolo tune "Kokee;" the beautiful "Behold Laie;" and the ballad "Blind Man in the Bleachers." Loyal will be joined by one of Oahu's best Hula Halaus (schools).

This special engagement is open to active duty or retired military reservists or National Guardsmen, and holders of a military club card.

Tickets are \$18.95 for adults and \$12.95 for children under 12, and includes a buffet dinner featuring Roast

Baron of Beef, Loyal's fabulous show, and gratuity. Tickets can be purchased up to two weeks in advance at the hotel or at any Military Ticket Outlet on Oahu.

Sea Life Park

Sea Life Park makes learning about the marine environment a fascinating experience for children and adults with explorations.

Preschoolers aged 3, 4 or 5, and an adult companion can explore the ocean world together in class sessions featuring learning experiences with live animals, arts and crafts, bamboo pole fishing, tide pooling, songs, story-telling and role playing.

A one-session Saturday class held from 9 to 11 a.m., entitled "Super Sea Turtles," will meet May 18.

For information and registration call 259-7933.

Childbirth preparation

An eight-week Bradley Childbirth Preparation class will be offered at the Castle

Medical Center auditorium on consecutive Wednesdays, 7 to 9:30 p.m., beginning May 15.

The class offers information, labor and coaching rehearsal, group discussion and support, and uses audiovisual materials. Topics include exercises for pregnancy and birth, relaxation, natural breathing, nutrition, breast feeding, consumerism, recognizing birth fears, discomforts of pregnancy, normal birth patterns, Cesarean birth,

newborn appearance, emotional aspects of pregnancy and more.

Also included is a tour of Castle's labor and delivery facilities and alternate Birthing Room. Cost is \$75.

To reserve a space in the class call 263-5162.

Volunteers needed

The Muscular Dystrophy Association is looking for

volunteers to spend a week aiding campers with a neuromuscular disease in daily living activities and recreational programs.

The MDA summer camp will be held from June 28 to July 4, at Camp Erdman,

Mokuleia. The only job requirement is a willingness to volunteer a week of time and a desire to help and enjoy the fellowship of others.

For more information, and applications, call the MDA office at 945-3545.

THE LOYAL GARNER SHOW

Saturday nights, now through July

Tickets at all military ticket outlets

HALE KOA HOTEL

2055 Kalia Rd. on Waikiki Beach ♦ Phone 955-0555

WAIKIKI
923-2394

TODAY SHOWS AT:
12:30-2:30-4:30-6:30-8:30-10:30
Moves over Friday to Kuhio 2.

Jonathan started out trying to score. And ended up being the target.

GOTCHA!
His first time may be his last.

PG-13



NOW FLY DELTA NONSTOP TO DALLAS/FT. WORTH, THROUGH TO ATLANTA

Make easy Delta connections for many other cities. Or fly Delta from L.A. or San Francisco to cities across the U.S.

Leave Honolulu any evening at 5:40pm aboard our Wide-Ride TriStar for arrival in Dallas/Ft. Worth or Atlanta next morning. Enjoy a delicious dinner en route and a first-run movie!

In Dallas/Ft. Worth connect with Delta flights to cities throughout Texas. Or fly on to your choice of dozens of other cities, including Kansas City, New Orleans or Boston.

In Atlanta connect with Delta flights to over 60 cities, including Florida's major resorts, Montgomery, Charleston, SC, Charlotte or Washington.

Only Delta nonstop from Los Angeles to Atlanta, Dallas/Ft. Worth, San Francisco, Cincinnati or New Orleans. You've also got jets right from Los Angeles to

Atlanta, New York, Los Angeles, San Francisco, Dallas/Ft. Worth, San Diego, Salt Lake City, and Washington.

From Delta's San Francisco hub fly nonstop to Atlanta, Cincinnati, Dallas/Ft. Worth or Los Angeles. Or straight through to New Orleans, Orlando (home of EPCOT Center/Walt Disney World), Philadelphia, San Antonio or Tampa/St. Pete.

Save up to 75% with Delta's new Plan-Ahead Discount Fares—for travel between cities within the continental U.S. Ask for purchase, travel and penalty qualifications.

Or save 25% off with our special Military Fare. No advance purchase requirements. You don't fly stand-by. You can get on any flight, at any time, that has available space.

Check your on-base Scheduled Airline Ticket Office (SATO) or call Delta for details and current fares. All schedules are subject to change without notice.

*Small charge for headsets in Tourist.

Starting June 1

Fly Delta nonstop to Atlanta any evening, except Monday or Friday. We'll also have a new one-stop straight through to Houston's intercontinental airport every evening.



DELTA GETS YOU THERE

What's cooking

Today

Lunch
Roast beef sandwich, Reuben Frankwich, baked beans, soup, salad bar, dessert

Dinner
Turkey chow mein, pepper steak, carrots, rice, soup, salad bar, dessert

Friday

Breakfast
Grilled Canadian bacon, home fries, creamed beef, eggs any style

Lunch
Italian veal cutlet, B.I.T. turkey sandwich, french fries, soup, salad bar, dessert

Dinner
Tuna and noodle casserole, fish portions, broccoli, soup, salad bar, dessert

Saturday

Breakfast/brunch
Grilled ham slices, hash browns, bacon, creamed beef, eggs any style, barbecue beef, french fries, soup

Dinner
Swiss steak, barbecue chicken, corn, baked potatoes, soup, salad bar, dessert

Sunday

Breakfast/brunch
Baked sausage links, hash browns, eggs any style, apple coffee cake, cheeseburgers, hotdogs, french fries, soup, salad bar, dessert

Dinner
Oven roast beef, Rock Cornish hens, mixed vegetables, soup, salad bar, dessert

Monday

Breakfast
Breaded luncheon meat, home fries, creamed beef, eggs any style

Lunch
Monte Cristo sandwich, Italian pepper beef, soup, salad bar, dessert

Dinner
Breaded pork slices, stuffed beef rolls, mashed potatoes, soup, salad bar, dessert

Tuesday

Breakfast
Beef hash, hash browns, french toast, eggs any style

Lunch
Hot roast pork and submarine sandwiches, chili dogs, soup, salad bar, dessert

Dinner
Salisbury steak, Swiss steak, onion gravy, soup, salad bar, dessert

Wednesday

Breakfast
Sausage links, hash browns, creamed beef, eggs any style

Lunch
Turkey, roast beef and grill sausage, egg and cheese sandwiches, soup, salad bar, dessert

Dinner
Chili con carne, burritos, Mexican style corn, soup, salad bar, dessert

Last minute substitutions may become necessary. Check with the dining facility for more information.

Special Services

Kaneohe Bay, Hawaii



Swimming Lessons

Registration for swimming lessons scheduled for Saturday at the Station Pool has been cancelled. Lessons will be available mid-June. Call Dependent Rec for more information.

Ice Capades discount tickets

Discount coupons for Ice Capades' May 10-19 shows at NBC Arena are available at Camp H.M. Smith's Morale, Welfare, and Recreation

Office, building 209. The discount is for \$1.50. For more information, call 477-5142.

Ticket vouchers are also available through the Special Services Ticket Office at Kaneohe Bay. Cost of the tickets are \$11.20, \$9.70 and \$7.70. For more information or to reserve tickets, call 257-31087/3520.

Scuba class

Special Services offers scuba diving classes at all levels. Free introductory scuba class meets on the second Saturday of each month, from 9 to 11 a.m. Preregistration is required,

and all equipment will be provided.

Water certification, advanced open water, and seven specialty classes from deep diver to equipment repair are also offered. All classes are taught by Professional Association of Diving Instructors. Diving compasses now available for certified divers.

For more information call the Outdoor Recreation

Equipment Center at 257-2548.

Youth Soccer

Youth soccer season is approaching and coaches are needed who have soccer experience and enjoy working with children.

Application forms are available at Dependent Rec or call 254-2963 for more

information.

Tentative registration dates are May 13-24 from 3 to 4:30 p.m., at Dependent Rec Office, bldg. 1391.

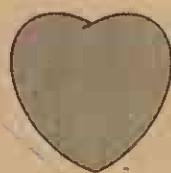


MAY 5, 1985

LAST WEEK	THIS WEEK	TITLE	ARTIST
3	1	There's No Way	Alabama
6	2	Somebody Should Leave	Reba McEntire
4	3	Don't Call It Love	Dolly Parton
7	4	Step That Step	Sawyer Brown
9	5	Radio Hear!	Charly McClain
8	6	Warning Sign	Eddie Rabbit
11	7	In A New York Minute	Ronnie McDowell
10	8	Fallin' In Love	Sylvia
14	9	Sometimes When We Touch	Mark Gray & Tammy Wynette
12	10	That's What You Do When You're In Love	The Forester Sisters

Hear the Top Country Songs in the Nation on AMERICAN COUNTRY COUNTDOWN SUNDAY MORNINGS at 9 on KDEO Country Radio AM94

YOU'LL



Love

SERVING KAILUA SINCE 1957

KAILUA FENDER SHOP



JACOB YAMADA (MANAGER)

HARRY YAMADA (OWNER)

SATISFACTION GUARANTEED

EXPERT BODY WORK • AUTO PAINTING
RADIATOR CORE REPAIR • RUST PROOFING

160 Hamakua Dr., Kailua FREE ESTIMATES CALL 261-0837

GET A BOX OF VERBATIM FREE

Buy 1 Box = 5⁰⁰ REBATE
Buy 2 Boxes = 12⁰⁰ REBATE
Buy 3 Boxes = FREE BOX

REBATE MAILED TO YOU BY DATALIFE OFFER ON SPECIALLY MARKED BOXES OF 5/4 AND 3/4 INCH DISK. ONE OFFER PER HOUSEHOLD. EXPIRES AUGUST 15, 1985.



SSDD 20⁹⁵ PRICE AFTER REBATE 15.95
DSDD 25⁹⁵ PRICE AFTER REBATE 20.95
3 1/2" 31⁹⁵ PRICE AFTER REBATE 26.95

100% GUARANTEE FOR LIFE

DATALIFE	APPLE/IBM	SURGE PROTECTORS	READY FORM
DRIVE ANALYZER	27 ⁹⁵	LEMON/EC1 39.95	20 lb. 250 — 5.95
HEAD CLEANING KIT	8 ⁹⁵ 10 ⁹⁵	LIME/EC11 59.95	20 lb. 1000 — 18.95
REFILLS 10 REFILLS TO A PACK	9 ⁹⁵ 10 ⁹⁵	PEACH/EC1V 59.95	CLEAN EDGE
		ORANGE/ECV 89.95	BUSINESS 200 — 5.95
		SQUASH 94.95	IVORY/GREY 150 — 7.95
		IBAR 2-8 44.95	20 lb. 1000 — 18.95
		IBAR 4-6 58.95	20 lb. 3000 — 34.95
		IBAR 8-15 73.95	LABELS
		STATIC PAD 42.95	3 1/2 x 1 1/2 — 7.95
			ENVELOPES—100 PACK
			IVORY 13.95 20 lb. 11.95
			INDEX CARDS
			4x7 250 — 6.95

FREE DELIVERY ON OAHU

NAME _____ ITEM _____ NO. PRICE TOTAL _____
STREET _____
CITY _____ STATE _____
ZIP CODE _____ PHONE _____
MAIL CHECK or MONEY ORDER TO:

D&M COMPUTER SUPPLIES
HAMAKUA CENTER, SUITE 400
150 HAMAKUA DRIVE
KAILUA, HAWAII 96734

TAX PAID
FREIGHT FREE
ALLOW ONE WEEK FOR DELIVERY
SPECIAL DISCOUNT TO USER GROUPS
CALL 262-0390 FOR DETAILS

NAVY EXCHANGE PORTRAIT STUDIO

BLDG. 1237 — PEARL HARBOR, HAWAII
PHONE 422-2441

FATHER'S DAY SPECIAL!

ADULT FAMILY, CHILDREN SPECIAL

16x20 WALL PORTRAIT
REG. \$68.00 **\$29.95**



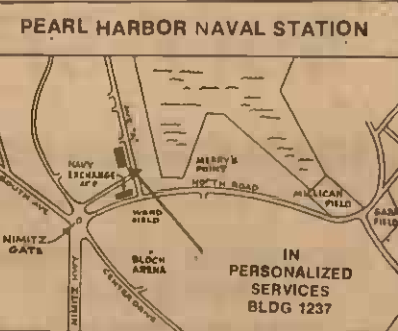
3-8x10

REG. 56.00
\$19.95



8 ALBUM PROOFS PORTRAITS DIFFERENT POSES

\$12.95



Instant Passports 2 For \$7.00

Weddings • Copy & Restoration of old Photographs

NAVY exchange HAWAII

This advertisement was not paid for, in whole or in part, by the Department of the Navy or the Navy Exchange. This advertisement does not constitute endorsement by the Navy Exchange, the Department of the Navy, or the U.S. Government of the products or services advertised.

Polaroid

A MARINE CORPS EXCHANGE SPECIAL

WOW!

A POLAROID ONE-STEP 600 CAMERA THAT ENDS UP COSTING YOU NOTHING!



HERE'S HOW:

\$13⁹⁹ SALE PRICE (Regular \$17⁹⁹)
- **5⁰⁰** over-the-counter cash rebate. Use coupon below
8⁹⁹ NET YOU PAY.
- **9²⁵** One pack FREE film from POLAROID by mail. Ask for coupon. (Film is a Marine Corps \$9²⁵ value.)
26¢ Amount you are ahead after cash rebate and free film

Polaroid OneStep 600.

The ideal gift camera.

- Easy to use; no focusing required.
- Infrared sensor for improved flash exposures.
- Never buy batteries; they're in the film pack.
- Lightweight.
- Instant pictures from 4'.

OFFER LIMITED TO QUANTITIES ON HAND

Separate coupon must be completed for each camera purchase.

VALUABLE COUPON
\$5⁰⁰ over-the-counter cash rebate when you buy a POLAROID ONE-STEP 600
Purchase between 1 May & 19 July, 1985. A separate coupon must be completed for each ONE-STEP purchased.
REDEEMABLE ONLY IN U.S. MILITARY EXCHANGES

CUSTOMER _____ EXCHANGE _____

Name _____ Name _____
Address _____ Address _____
City _____ State _____ Zip _____ City _____ State _____ Zip _____

Exchange: Polaroid Corporation will reimburse you for the face value of the coupon provided you and the customer have complied with the terms of the offer. Cash value is 1/100th of 1¢. Submit completed coupons to:
POLAROID MILITARY REBATE, P.O. BOX 1994, CLINTON IOWA 52734

Marine Corps Exchange
Kaneohe Bay

This Ad Not Paid For, Nor Sponsored by, The Marine Corps Exchange.

161 PET SUPPLIES SALES & SERVICE

AKC Toy Poodle pups, 3 apricot and 1 black 5 weeks old. Call 637-4471

BIRD clearance all kinds, buy for Mother's Day 696-3585

COCKATIE babies for Mother's Day. Most colors, \$55 and up. Hand raised. 261-9351

FOH sale registered poodle, 3 yrs. old, studs, good for show service. \$125/best offer 254-2547

PARROT or bird stand 5' 4" high w/pan 17" x 24" new cond. \$85 373-3021

WESTERN saddle, good condition, \$200 or best offer. Call 261-6834

COCKATIE, young and healthy. Reasonable. Call 261-3103

LARGE dog house, \$60; 6 young rabbits for sale. Call 456-4874

156 AUTO PARTS & SERVICE

AUTO PARTS - All Kinds. Engines, Trans, Body Parts. Call, we might have what you need. 239-9878 or 396-4260.

Parts from A to Z for a '75 Mercury Bobcat/Print. Call 235-8566

'69 VW part motor, \$200. Transmission \$200 offer. ETC. Road 684-9196 or Boh 254-5641

'71 CHAI LINGER, all parts. Dana, 4 spd, 727-2700. '74 6-pac. haul, more. 672-8807 offer 7 p.m.

"BATTERY FACTORY"

New and Reconditioned Auto Batteries \$25 + Trade & up New Motorcycle Batteries

747 Kapiolani 533-3312

181 AUTOS WANTED

TOP DOLLAR PAID DESPERATE NEED CLEAN CARS. PAID FOR OR NOT. J.N. CHEVROLET/MAZDA 2999 N. Nimitz Hwy. 836-1222

166 TRUCKS & PICKUPS

'73 FORD F-250 3/4 ton truck. New paint, stereo, very good cond. \$3700/offer. 239-9878 or 396-4260

'84 DODGE D50 4x4, air, 5 spd. 7-ohat like new. 13,000 mi. stereo, bucket seats \$7995/offer. 732-3506

'66 Datsun pickup, 8500 Call 261-2672

'73 DATSUN truck, 1600 rebuilt engine, rims, wide tires, \$600 Firm. 261-8036

'83 TOYOTA 4x4 long bed, duraliner centerline rim, exc. cond. \$12,000. Call 261-8036

'75 DATSUN Pickup, locking fiberglass wheel, exc. cond. \$2300. 257-3226 days. 261-2074 aves. Dr. Butts

85 Chevy S-10 Blazers

8.8% APR

GMAC financing O.A.C. New '85 S-10 Blazers only. J.N. CHEVROLET/MAZDA

TRUCK CENTER NIMITZ HWY. BY THE AIRPORT Ph. 839-0770

TRUCK SPECIALS

'85 Chevy S-10 Utility Pickup (LT4520) Utility compartment, V-8 4 spd. P/S, radio, heavy duty options - more. \$13,995

SALE PRICE \$12,695

'85 Chevy S-10 Blazer (LT4533) 4 spd. Radio, P/S, gauges - more. Retail \$13,247

SALE PRICE \$9995

'84 El Camino (LT3061) V-8, auto, air, stereo, lift wheel - many other options. Retail \$11,200

SALE \$10,295

'84 Chevy 1/2 ton pickup (LT3428) 6 cyl. 4 spd., radio 7200 GVW - more. Retail \$13,101

SALE PRICE \$9995

'84 Chevy 1/2 ton longbed pickup (LT3099) V-8, auto, radio - more. Retail \$12,521

SALE PRICE \$9595

J.N. CHEVROLET/MAZDA TRUCK CENTER NIMITZ HWY. BY THE AIRPORT Ph. 839-0770

170 MOPEDS SALES & SERV.

FOH Sale moped '82 Honda Urban Express, exc. cond. Ph. 247-5543

171 MOTORCYCLES SALES & SERVICE

'81 YAMAHA 650 Midstate Special 8000 miles, good cond. \$1300 262-4223

'83 YAMAHA 400 Maxim, three rack \$1100 '80 Honda Hawk, \$750 Call 455-2830

'81 YAMAHA 400 Spec, exc. cond., sharp. Must sell by 5/14 \$750/offer. 254-3706

175 VANS, CAMPERS & JEEPS

LUNCHWAGON for sale excellent price \$7900 Fully equip. 456-4177 Firm

'85 Chevy Astro Van (LT4527) V-8, auto, P/S, radio, heavy duty options, gauges 27 gk. look - more. Retail \$13,500

SALE PRICE \$10,995

'85 Chevy Astro Van (LT4601) 4 spd., power steering, radio gauges - more. Retail \$12,285

SALE PRICE \$9995

'83 Ford 8 passenger Van (JAWY178) V-8, auto, air, p/s, radio (JAWY178) V-8, auto, air, p/s, radio (JAWY178) V-8, auto, air, p/s, radio

SALE PRICE \$7595

'78 Chevy G10 Van (JAWY178) V-8, auto, air, p/s, radio (JAWY178) V-8, auto, air, p/s, radio (JAWY178) V-8, auto, air, p/s, radio

SALE PRICE \$4995

J.N. CHEVROLET/MAZDA TRUCK CENTER NIMITZ HWY., BY THE AIRPORT Ph. 839-0770

ON DISPLAY

'75 Chevy Astro Mini Van (LT4501) customized throughout, V-8 auto, 2 captain chairs, stereo/boom, auxiliary lights, carpeting, parking, brake for chest, bay window, drop running boards, mag wheels, 1000/1 roof rack, custom paint - more.

'85 Ford Customized Van (JAWY178) Full powered access, 4 captain chairs, stereo/boom, rich paneling, carpeting, bay windows, blinds/drop, auxiliary lights, running boards, mag wheels, table, CB radio, sound system, 1000/1 roof rack, custom paint - more.

'85 Chevy Contempo Van (LT4558) all the luxury options - 4 captain chairs, stereo/boom, plush carpets, paneling, auxiliary lights, 6 bay windows, table, running boards, sound system, 1000/1 roof rack, custom paint - more.

J.N. CHEVROLET/MAZDA TRUCK CENTER NIMITZ HWY. BY THE AIRPORT Ph. 839-0770

176 AUTOS FOR SALE

ALPHA ROMEO 76 SPYDER, convertible, exc. cond. \$3800/offer. Rick 471-0622 or 455-1610

AUDI

'78 Fox \$1975 wgn., auto, low mil. sharp (BND111) J.N. CHEVROLET/MAZDA 836-1222 2999 N. Nimitz Hwy.

DOLLAR CAR SALES

COMPARE THE DOLLAR VALUE BEFORE YOU BUY!

'82 TOYOTA TERCEL \$2725

'83 FORD FAIRMONT FUTURA 4DR. FAMILY CAR, FULLY EQUIPPED, \$3825

'81 DATSUN 210 2DR. RADIO, \$2225

'83 MERCURY COUGAR FULLY EQUIPPED, LOW MILEAGE, \$7225

'84 MAZDA 626 LX 4DR. FULLY EQUIPPED, INCLUDING CASSETTE, \$8825

'83 DODGE 100 CONVERTIBLE LOW MILEAGE, FULLY EQUIPPED, \$7225

926-4256 DOWN LAGOON DRIVE

PLEASE VISIT OUR TRUCK CENTER AT NIMITZ HWY. BY THE AIRPORT. ALL UNITS SUBJECT TO PRIOR SALE. ALL UNITS PLUS TAX AND LICENSE.

Auto Mastics, Inc.

501 COOKE STREET HONOLULU, HAWAII 96813 Complete Rust Proofing Services & Auto Detailing

TRUCK BED MATS

SAVE WEAR AND TEAR ON TRUCK BEDS Most Sizes Available In Stock (CALL FOR SPECIAL DISCOUNT)

RUSTPROOFING

Tecty Rust Preventatives • Guaranteed 5 yr./50,000 mi. (New Vehicles Only) • Lifetime Warranty

PAINT SEALANT

TST Formula 5000 w/Teflon • Conditional 3 yrs. Warranty

Call 524-4020

AUDI

'75 AUDI LS1004 dr. auto, air, needs paint, \$625/best offer 262-8071 after 6

BMW

'72 BMW 1.9, new paint & suspension, stereo, exc. cond. \$4000/offer 523-9868, 395-3461

CHEVROLET

'83 Chevette \$3775 6 dr. auto, p/s, air, sharp (BNP456) J.N. CHEVROLET/MAZDA 836-1222 2999 N. Nimitz Hwy.

WIDE SELECTION

'85 MONTE CARLO SS In stock or factory order from \$11,475 J.N. CHEVROLET/MAZDA 2999 N. Nimitz Hwy. 836-1222

'84 Celebrity (BT13M) \$8975 3 seat wgn. auto, air clean J.N. CHEVROLET/MAZDA 836-1222 2999 N. Nimitz Hwy.

'70 MONTE CARLO 2 dr. exc. cond. in & out, runs great. \$1000/offer. 622-5749

'80 MALIBU, 4 dr., exc. cond., 34,000 mi. \$2200/offer. 262-7830 or 262-5834

'76 MALIBU 2dr. wgn., no rust, new brakes, tires, battery, \$1300. Ph. 247-8459

BANK REPOSESSION

'82 Cavalier, 2 dr., 4 spd., sports hatch back, sharp (AW1798) \$14550 dn. pymt. - tax, lic. O.A.C. Repossession price \$3870. J.N. CHEVROLET/MAZDA 836-1222 2999 N. Nimitz Hwy.

'80 CHEVY Citation, new tires, good cond., \$2000. Call 254-9745

'81 MALIBU 263, 4 dr., power steering, Retriable \$900/offer 395-0379

'80 CHEVETTE low mileage \$500 Call 254-2772

'81 CAMARO auto, V-8, new paint/brakes, clean \$2600/offer 239-7698

IROCI IROCI IROCI

LOTS of CAMAROS Sport Cps, Berlina, 278, IROC

WIDE SELECTION '85 CAMARO In Factory Order From \$8975

Hawaii's Newest Chevrolet Dealer J.N. CHEVROLET/MAZDA 836-1222 2999 N. Nimitz Hwy.

CHEVROLET

78 Black NOVA, 2 dr. V-8, air, stereo, auto, power windows & locks, tilt steering \$3300/offer. 235-5881 after 5 p.m. 239-8421

JUST RELEASED!

New '85 Chevrolet SPECTRUM EPA CITY 38 MPG 43 MPG HIGHWAY From \$10,995 (ICR4824) \$6475

Hawaii's newest Chevrolet dealer J.N. CHEVROLET/MAZDA 836-1222 2999 N. Nimitz Hwy.

DATSUN

1981 DATSUN 280ZX 2+2, mint condition, low mileage, loaded, T-top, air conditioning \$9795. Call 235-5881 Peter Hirsch or 732-5781 evenings.

'79 DATSUN station wagon, \$375 as is Call 531-1341 days. or 261-6978 eves

'83 DATSUN 280ZX, digital, leather, T-top, AM/FM cassette, all power, low miles, immac. \$12,500 or trade. 623-2525

'82 B210, 5 spd., exc. cond., \$3100. '77 Toyota, 4 dr. sedan, \$200. 623-6043

BANK REPOSESSION

'84 Santa 2 dr. 5 spd. P/S, air, stereo, immac. (BT1906) \$10710.00 pymt. - tax, lic. O.A.C. Repossession price \$5870. J.N. CHEVROLET/MAZDA 836-1222 2999 N. Nimitz Hwy.

DODGE

'71 CHARGER, V-8, auto, Good cond. \$600/offer. 941-3889

'76 DODGE Dart, 4 dr., 2nd st engine, \$1600. Call 261-1902

FIAT

'82 SPIDER 2000, one owner, low mileage, mint \$7900. Call 677-5743 6 p.m.

FORD

FOH Sale '66 Ford Fairlane & '77 Olds Toronado. Call 235-6546 days

Going to OREGON to buy a new car or pickup? - contact - ROBERTS & REDFIELD PORTLAND Write for price lists and full information ANY MAKE - ANY MODEL delivered - road tested at Portland International Airport ROBERTS & REDFIELD Suite #102 8620 N.E. 82nd Portland, Oregon 97220 (503) 257-0551 Conveniently located just 3 minutes from Airport

FORD

'76 FOHO Gran Torino station wagon, good cond! A great family car. Asking \$1000 Ph. 235-4190

'75 FORD Pinto sta. wgn 6 cyl. auto. \$300 Call 239-9043

'75 GRANADA Gnia 2 dr. air, stereo, new tires, runs good. clean. \$1100 623-2586

'88 MUSTANG auto, rebuilt engine, looks & runs good. \$1200 254-4215

'79 LTD, 4 dr., auto, a/c, power steering & brakes, runs & looks good. \$1300. 254-4215

'74 FOHO Gran Torino, clean, 2 dr. auto \$950/offer ph. 261-0638

HONDA

22 HONDA 1500 GL, silver key, good shape, good tires. Deluxe interior. AM/FM stereo. Call Bill eves. & weekends 262-9457

LINCOLN

'77 LINCOLN Mark V, wht., exc. cond., 33,000 mi. \$4500 or offer 395-9673

MAZDA

'81 MAZDA RX-7 cruise, a/c, good condition 45,000 mi. \$7500 or best offer. Call 422-9335 or leave msg. 474-1201 for hrs 209

'79 MAZDA sta wgn, 45,000 mi. low blue book \$1765 high \$2925. Asking \$2000 exact cond. 686-5184

'85 B26 4 dr. deluxe 5 spd. (M4299) P/S, wheel covers, radio, leather trim, bucket seats, am/fm car stereo, lined glass, much more. \$8985 at Hawaii's Oldest Mazda Dealer J.N. CHEVROLET/MAZDA 836-1222 2999 N. Nimitz Hwy.

CHECK OUR SAVINGS ON ALL '85's NOW AT TONY HONDA PEARLRIDGE 487-5595

BRITISH AUTO

EXPERT SERVICE AND PARTS FOR BRITISH SPORTSCARS TRANSMISSION, CARBURETOR AND ELECTRICAL SPECIALISTS. NO CHARGE FOR DIAGNOSIS OF PROBLEMS. ALL WORK GUARANTEED FOR 90 DAYS. MONDAY-SATURDAY 9-5 235-1818 46-428 ALALOA STREET, KANELOE, HI

PEARL HARBOR

AMC/Jeep We buy cars too! 677-0709

CUTTER FORD

MILITARY FINANCING AVAILABLE

'67 FURY \$195

'70 TORINO \$195

'72 LTD \$395

'75 DATSUN B210 \$595

'74 APOLLO \$595

'76 MONARCH \$695

'77 CHEVY P/U \$795

'78 DATSUN \$795

'72 VW BUG \$895

'76 RABBIT \$1295

'79 CHAMP \$1395

'72 VW BUG \$1595

'79 MONZA \$1795

'76 MARK IV \$1895

'80 CHEVETTE \$1895

'78 CHEVY P/U \$1995

'78 LeBARON \$2295

May 9, 10, 11

98-015 Kam Hwy., AIEA * Ph. 487-3811

RAINBOW USED CARS

CHEVROLET

'84 CAMARO \$8295

'78 LTD \$1595

'83 FIREHOLD \$7195

'77 T-BIRD \$1895

'78 BLC \$1595

'78 CAMARO \$2195

'81 ESCORT \$1895

'81 CITATION \$1895

1793 Kapiolani Blvd. Prices Good Thru 5/15/85 Ph. 943-0031

HONDA

'82 HONDA 1500 GL, silver key, good shape, good tires. Deluxe interior. AM/FM stereo. Call Bill eves. & weekends 262-9457

LINCOLN

'77 LINCOLN Mark V, wht., exc. cond., 33,000 mi. \$4500 or offer 395-9673

MAZDA

'81 MAZDA RX-7 cruise, a/c, good condition 45,000 mi. \$7500 or best offer. Call 422-9335 or leave msg. 474-1201 for hrs 209

'79 MAZDA sta wgn, 45,000 mi. low blue book \$1765 high \$2925. Asking \$2000 exact cond. 686-5184

'85 B26 4 dr. deluxe 5 spd. (M4299) P/S, wheel covers, radio, leather trim, bucket seats, am/fm car stereo, lined glass, much more. \$8985 at Hawaii's Oldest Mazda Dealer J.N. CHEVROLET/MAZDA 836-1222 2999 N. Nimitz Hwy.

MAZDA

'85 RX7 Rotary rocket from \$11,675 Hawaii's oldest Mazda dealer J.N. CHEVROLET/MAZDA 836-1222 2999 N. Nimitz Hwy.

'78 Cougar XR7 \$1975 (AI C058) 2 dr. loaded, incl. moonroof J.N. CHEVROLET/MAZDA 836-1222 2999 N. Nimitz Hwy.