

# PRIMERGY TX150 S7

***System configurator and order-information guide***

**August 2013**

## **Contents**

Instructions

Configuration diagram

Configurator

Software Configurator 32-bit and 64-bit

I Basic unit

II Processor

III Memory

IV Graphics

V Energy Star restrictions

VI Accessible drives

VII Hard disk drives

VIII SAS / SCSI Controller

IX Disk array

X Communication/Network

XI System management options

XII Miscellaneous

XIII Country specific power cords

Change report



**PRIMERGY Server**

# Instructions

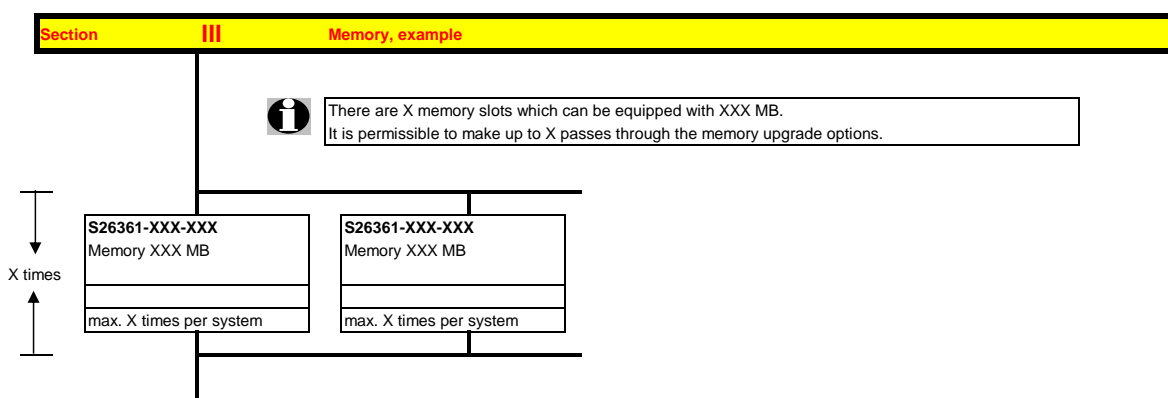
This document contains basic product and configuration information that will enable you to configure your system via PC-/ System-Architect.

Only these tools will ensure a fast and proper configuration of your PRIMERGY server or your complete PRIMERGY Rack system.

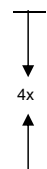
You can configure your individual PRIMERGY server in order to adjust your specific requirements.

The System configurator is divided into several chapters that are identical to the current price list and PC-/ System-Architect

Please follow the lines. If there is a junction, you can choose which way or component you would like to take. Go through the configurator by following the lines from the top to the bottom.



In one chapter you can only select as many components (here 4x) as the arrow indicates.



Please note that there are information symbols which indicate necessary information.



**Further information in the internet see:**

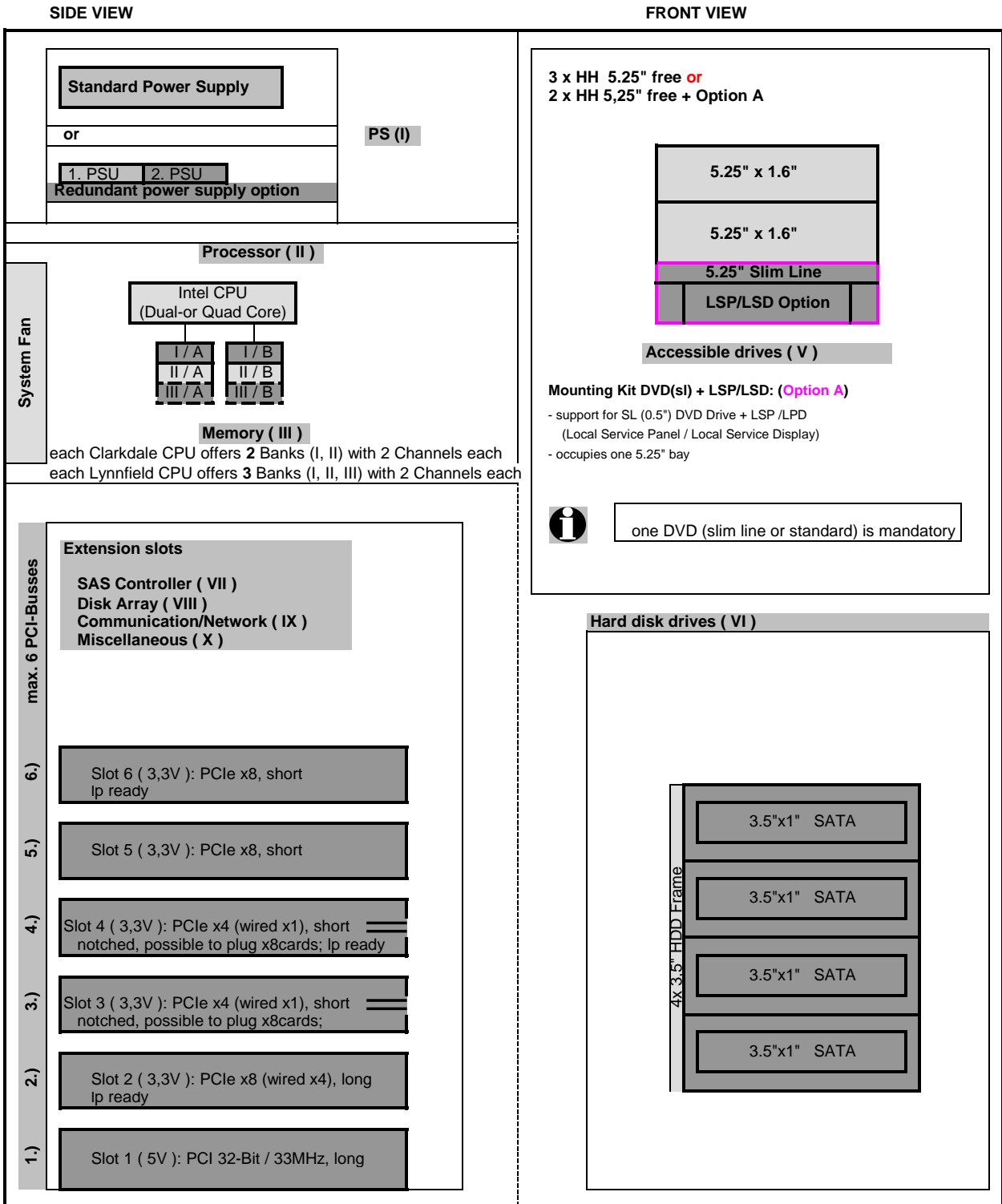
[http://ts.fujitsu.com/products/standard\\_servers/index.html](http://ts.fujitsu.com/products/standard_servers/index.html) (internet)

[https://partners.ts.fujitsu.com/com/order-supply/configurators/primergy\\_config/current/Pages/default.aspx](https://partners.ts.fujitsu.com/com/order-supply/configurators/primergy_config/current/Pages/default.aspx) (extranet)

Prices and availability see price list and PC-/ System-Architect  
 Subject to change and errors excepted

## Configuration diagram PRIMERGY TX150 S7 SATA LFF (3.5") System Unit

### System unit ( I )



Key:

- Included in basic unit
- Option



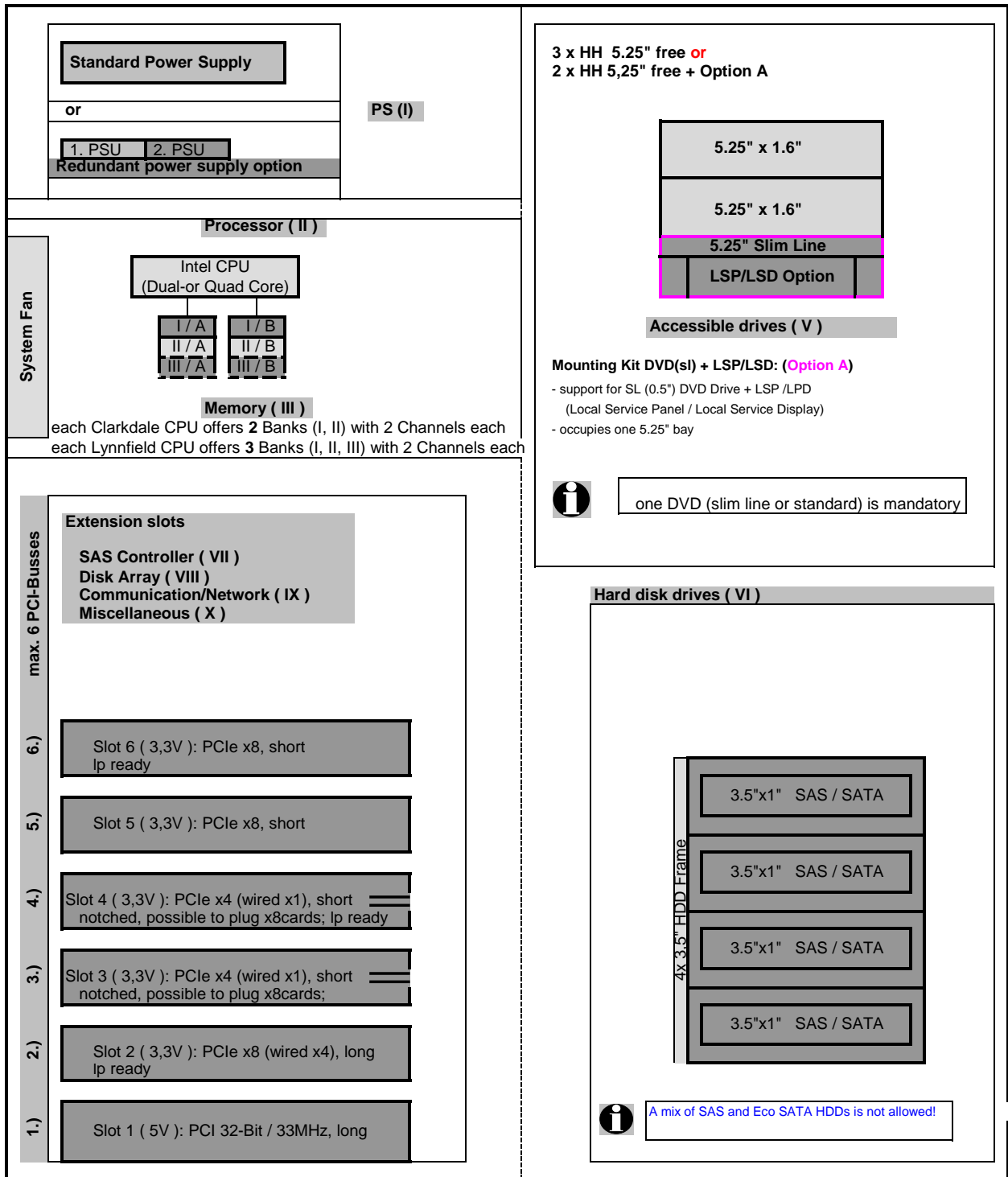
- A PCIe x4 card can also be plugged in a PCIe x8 slot
- A PCIe x8 card can be plugged in the notched slots no. 3 and 4
- PCI and PCI-X slots are mechanically not compatible to PCIe slots!

## Configuration diagram PRIMERGY TX150 S7 SAS LFF (3.5") System Unit

System unit ( I )

SIDE VIEW

FRONT VIEW



Key:

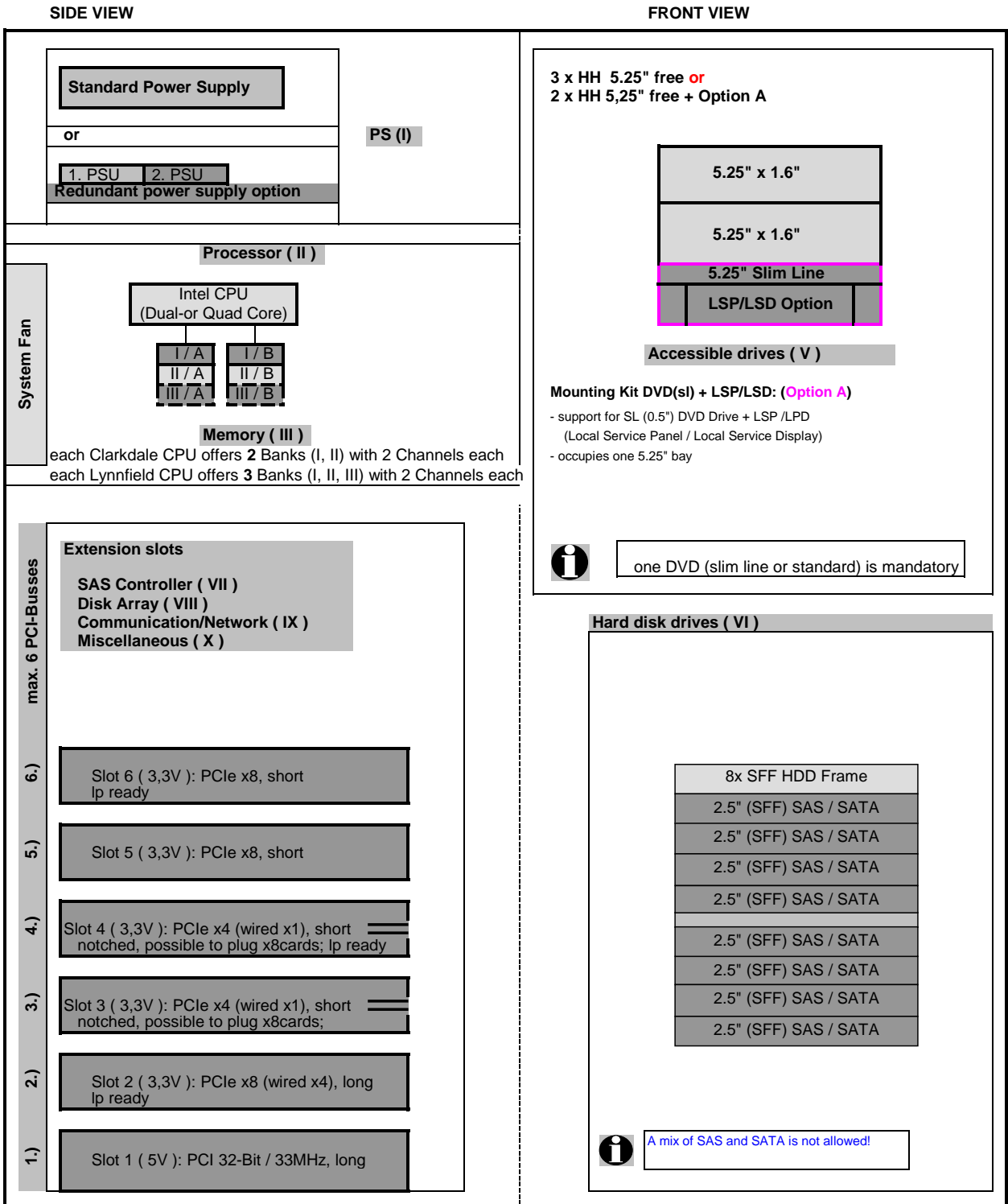
- Included in basic unit
- Option



- A PCIe x4 card can also be plugged in a PCIe x8 slot
- A PCIe x8 card can be plugged in the notched slots no. 3 and 4
- PCI and PCI-X slots are mechanically not compatible to PCIe slots!

## Configuration diagram PRIMERGY TX150 S7 SAS / SATA SFF (2.5") System Unit

### System unit ( I )

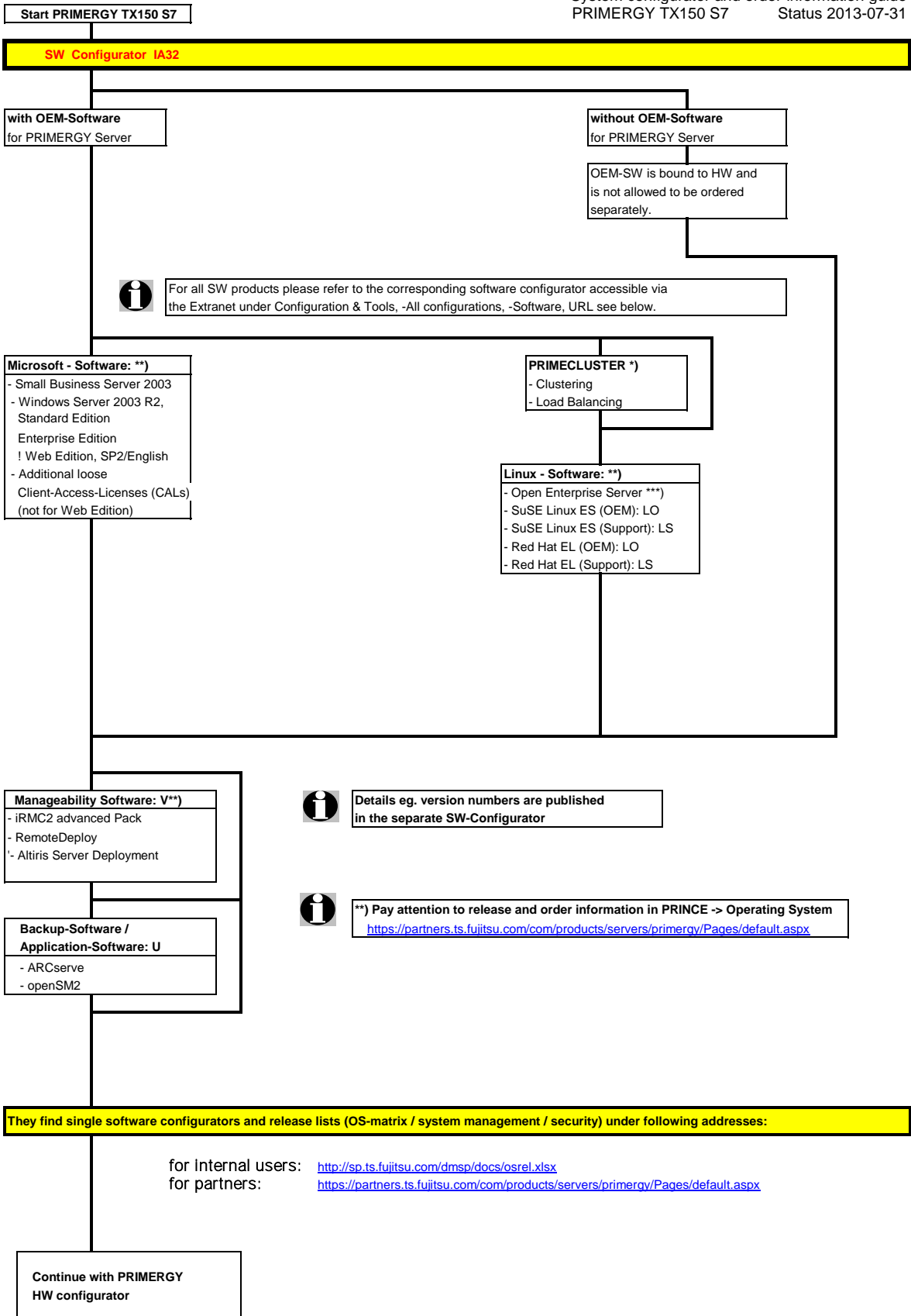


Key:

- Included in basic unit
- Option



A PCIe x4 card can also be plugged in a PCIe x8 slot  
 A PCIe x8 card can be plugged in the notched slots no. 3 and 4  
 PCI and PCI-X slots are mechanically not compatible to PCIe slots!



Start PRIMERGY TX150 S7

**SW Configurator EM64T**

with OEM-Software  
for PRIMERGY Server

without OEM-Software  
for PRIMERGY Server

OEM-SW is bound to HW and  
is not allowed to be ordered  
separately.

**i** For all SW products please refer to the corresponding software configurator accessible via  
the Extranet under Configuration & Tools, -All configurations, -Software, URL see below.

<b>only EM64T</b>	<b>Microsoft - Software: W</b>
	- Windows Server 2008, Standard x64 Edition Enterprise x64 Edition - Additional loose Client-Access-Lizenzen (CALs)

<b>only x86_64</b>	<b>Linux - Software *) **</b>
	- SuSE Linux ES (OEM): LO - SuSE Linux ES (Support): LS - Red Hat EL (OEM): LO - Red Hat EL (Support): LS

<b>Manageability Software: V**)</b>
- iRMC2 advanced Pack - RemoteDeploy

**i** Details eg. version numbers are published  
in the separate SW-Configurator

**i** \*\*) Pay attention to release and order information in PRINCE -> Operating System  
<https://partners.ts.fujitsu.com/com/products/servers/primergy/Pages/default.aspx>

**You'll find single software configurators and release lists (OS-matrix / system management / security) under following addresses:**

for internal users: <http://sp.ts.fujitsu.com/dmsp/docs/osrel.xlsx>  
 for partners: <https://partners.ts.fujitsu.com/com/products/servers/primergy/Pages/default.aspx>

Continue with PRIMERGY  
HW configurator

## Section

## Basic unit

**System unit, Rack and Floorstand, including:**

- \* **Two lockable front covers in floorstand version**
  - Door #1 for accessible drive bays
  - Door #2 for hot plug HDD bays
  - Both doors may be locked or door #1 may be left open while door #2 is still locked
- \* **backplane with 4 bays for hot-plug HD's. Type depending on base unit:**
  - Type 1: 4x hot plug LFF (3.5") SAS/SATA HDD (SAS/SATA LFF base units only)
  - Type 2: 8x hot plug SFF (2.5") SAS or SATA HDD (SAS SFF base units only)
- \* **1 power supply (Standard Ps with 350W or hot plug PSU with 450W)**  
in addition there is an upgrade to hot plug redundant PSU available
- \* **System fan ( No Hot-plug, No redundancy )**
- \* **3 bays 5.25" for accessible drives (half Hight)**  
Systemboard D2759 with:
- \* **heat pipe for the CPU**
- \* **Chipset Intel® 3420(codenamed Foxhollow Ibxpeak)**
- \* **6 PCI slots:**
  - 2 x PCIe x8 Gen2
  - 2 x PCIe x1 (x4 connected, slit for x8 usage) Gen2
  - 1 x PCIe x4 (x8 connected) Gen2
  - 1 x 32Bit / PCI 33MHz, ( 5V )
- \* **6 memory slots for max. 24GB with 6x 4GB registered DDR3 RAM or max. 16GB with 4GB unbuffered DDR3 RAM available**
  - Memory is divided into 6 DIMMs per CPU ( 2 channels with 3 slots per channel )
  - Max. 3 registered modules or 2 unbuffered modules are possible per channel
  - No mix of registered and unbuffered modules is allowed
  - First Memory ( one module ) has to be selected for an orderable basic unit
  - Memory upgrade is possible module wise
  - SDDC (Chipkill) is not supported
- \* **SATA-Controller on board (supporting RAID 0/1)**
- \* **1 Gbit Ethernet LAN on board ( Intel Hartwell ) with ToE;**  
and iSCSI boot integrated in System BIOS as selectable option
- \* **iRMC S2 (integrated Remote Management Controller) on-board server management controller**  
with dedicated 10/100 Service LAN-port and  
integrated graphics controller ( max. Resolution: 1600 x 1200 at 16 bpp)

**Interfaces:**

- \* 1x RS-232-C (9-pin) (usable for BMC or OS or shared)
- \* 1x RS-232-C (serial, 9pin), as option
- \* 1x VGA (15 pin)
- \* 10x USB 2.0 ( UHCI ) with 480Mbit/s (4x external at the rear, 3x external at the frontside,  
3x internal USB Interfaces for backup devices, uSSD and internal memory stick, no USB wakeup)
- \* 1x LAN RJ45, 1x Service-LAN RJ45 switchable

**\*internal Cables:**

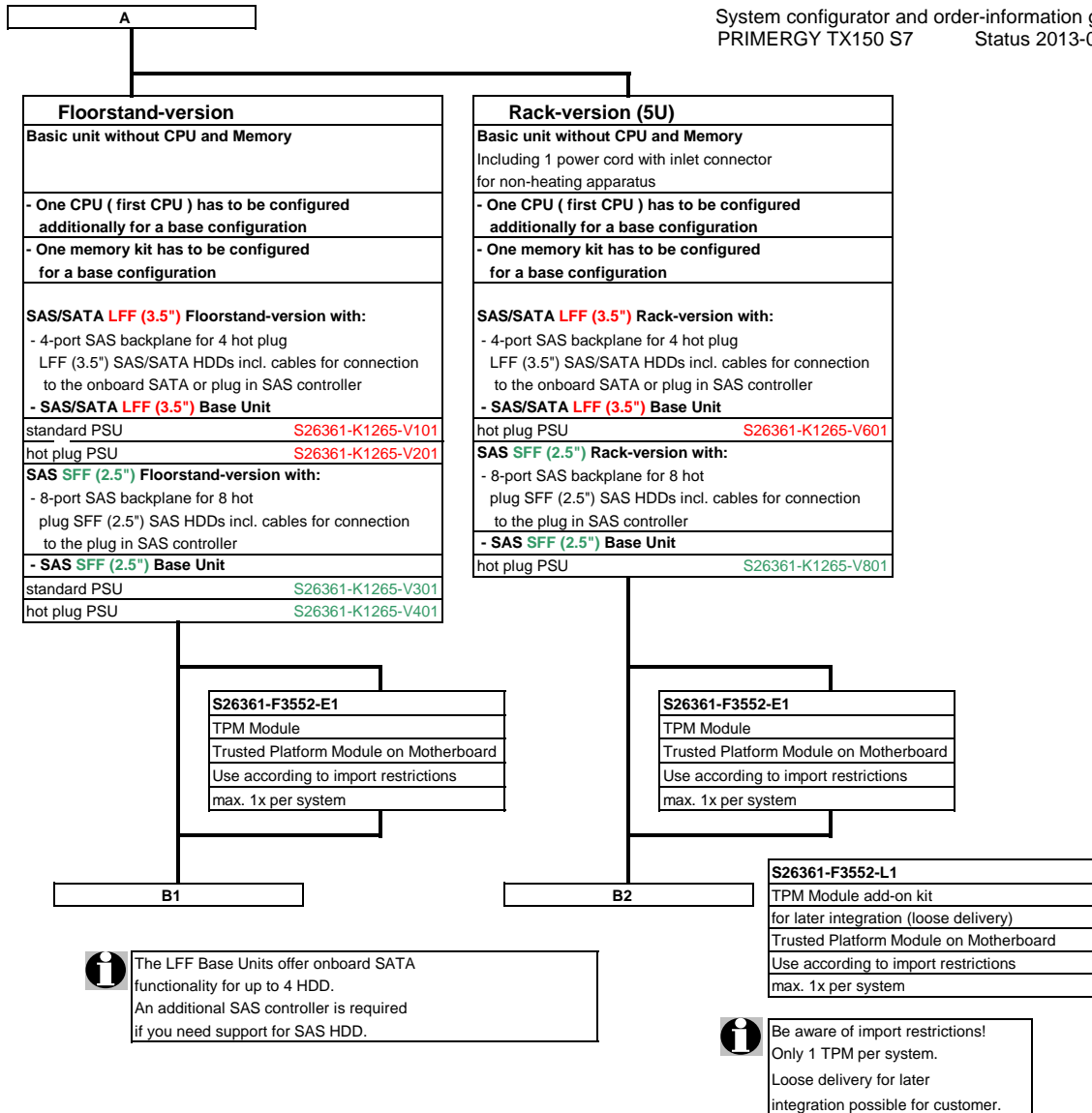
1. SATA cable for BD/DVD.
2. Cable for HDD Backplane

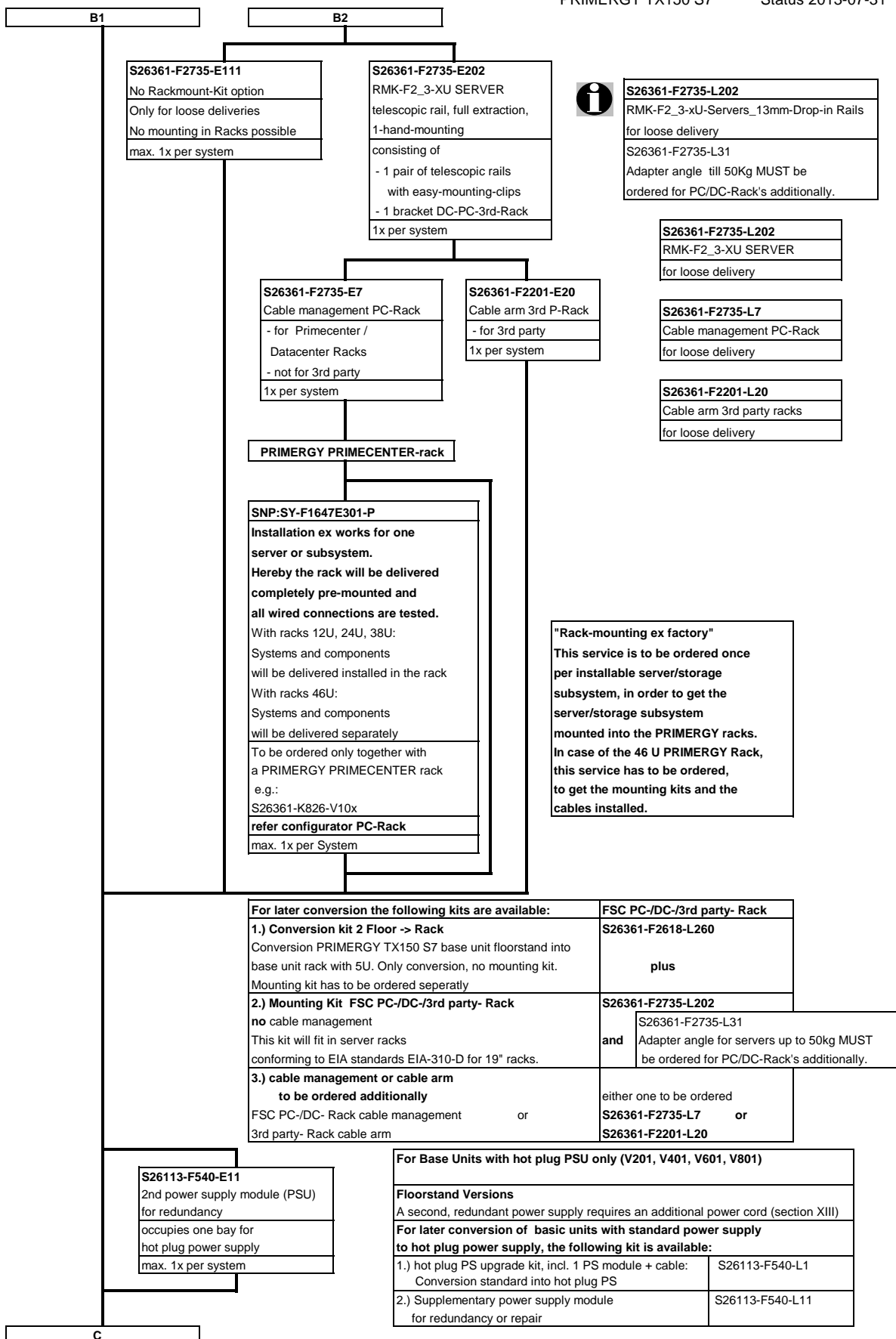
\* **ServerView Suite Software package incl. ServerStart, ServerBooks, Management Software and Updates**

\* **Documentation engl. (multilingual on CD)**

A







**S26361-F2735-E111**  
 No Rackmount-Kit option  
 Only for loose deliveries  
 No mounting in Racks possible  
 max. 1x per system

**S26361-F2735-E202**  
 RMK-F2\_3-XU SERVER  
 telescopic rail, full extraction,  
 1-hand-mounting  
 consisting of  
 - 1 pair of telescopic rails  
 with easy-mounting-clips  
 - 1 bracket DC-PC-3rd-Rack  
 1x per system



**S26361-F2735-L202**  
 RMK-F2\_3-XU-Servers\_13mm-Drop-in Rails  
 for loose delivery  
 S26361-F2735-L31  
 Adapter angle till 50Kg MUST be  
 ordered for PC/DC-Rack's additionally.

**S26361-F2735-L202**  
 RMK-F2\_3-XU SERVER  
 for loose delivery

**S26361-F2735-L7**  
 Cable management PC-Rack  
 for loose delivery

**S26361-F2201-L20**  
 Cable arm 3rd party racks  
 for loose delivery

**S26361-F2735-E7**  
 Cable management PC-Rack  
 - for Primecenter /  
 Datacenter Racks  
 - not for 3rd party  
 1x per system

**S26361-F2201-E20**  
 Cable arm 3rd P-Rack  
 - for 3rd party  
 1x per system

**PRIMERGY PRIMECENTER-rack**

**SNP:SY-F1647E301-P**  
 Installation ex works for one  
 server or subsystem.  
 Hereby the rack will be delivered  
 completely pre-mounted and  
 all wired connections are tested.  
 With racks 12U, 24U, 38U:  
 Systems and components  
 will be delivered installed in the rack  
 With racks 46U:  
 Systems and components  
 will be delivered separately  
 To be ordered only together with  
 a PRIMERGY PRIMECENTER rack  
 e.g.:  
 S26361-K826-V10x  
 refer configurator PC-Rack  
 max. 1x per System

**"Rack-mounting ex factory"**  
 This service is to be ordered once  
 per installable server/storage  
 subsystem, in order to get the  
 server/storage subsystem  
 mounted into the PRIMERGY racks.  
 In case of the 46 U PRIMERGY Rack,  
 this service has to be ordered,  
 to get the mounting kits and the  
 cables installed.

<b>For later conversion the following kits are available:</b>	<b>FSC PC-/DC-/3rd party- Rack</b>
<b>1.) Conversion kit 2 Floor -&gt; Rack</b> Conversion PRIMERGY TX150 S7 base unit floorstand into base unit rack with 5U. Only conversion, no mounting kit. Mounting kit has to be ordered separatly	<b>S26361-F2618-L260</b>
<b>2.) Mounting Kit FSC PC-/DC-/3rd party- Rack</b> no cable management This kit will fit in server racks conforming to EIA standards EIA-310-D for 19" racks.	<b>S26361-F2735-L202</b> and S26361-F2735-L31 Adapter angle for servers up to 50kg MUST be ordered for PC/DC-Rack's additionally.
<b>3.) cable management or cable arm</b> to be ordered additionally FSC PC-/DC- Rack cable management or 3rd party- Rack cable arm	either one to be ordered <b>S26361-F2735-L7</b> or <b>S26361-F2201-L20</b>

**S26113-F540-E11**  
 2nd power supply module (PSU)  
 for redundancy  
 occupies one bay for  
 hot plug power supply  
 max. 1x per system

<b>For Base Units with hot plug PSU only (V201, V401, V601, V801)</b>	
<b>Floorstand Versions</b> A second, redundant power supply requires an additional power cord (section XIII)	
<b>For later conversion of basic units with standard power supply                  to hot plug power supply, the following kit is available:</b>	
1.) hot plug PS upgrade kit, incl. 1 PS module + cable: Conversion standard into hot plug PS	S26113-F540-L1
2.) Supplementary power supply module for redundancy or repair	S26113-F540-L11

C

**Section II Processor**

One of following CPU's has to be selected for an orderable basic unit

**Dual-Core CPU's**  
- 1x 64-bit Intel  
Celeron (2MB SLC), Pentium (3MB SLC) or Core-i3 (4MB SLC)  
occupies socket for one CPU

Pentium G6950 2.80GHz 3MB 2C 1066MHz (73W)	<b>S26361-F3588-E280</b>	
Core i3-530 2.93GHz 4MB 2C/4T 1333MHz (73W)	<b>S26361-F3587-E293</b>	on special release
Core i3-540 3.06GHz 4MB 2C/4T 1333MHz (73W)	<b>S26361-F3587-E306</b>	
Core i3-550 3.20GHz 4MB 2C/4T 1333MHz (73W)	<b>S26361-F3587-E320</b>	on special release

**Quad-Core XEON CPU's**  
- 1x 64-bit Intel Xeon UP (8MB shared TLC = Third Level Cache)  
Hyper-Threading (HT not with X3430); 1333 MHz DDR3 Bus and heat pipe  
occupies socket for one CPU

Xeon X3430 2.40GHz 8MB 4C/4T 1333MHz Turbo (95W)	<b>S26361-F3578-E343</b>	
Xeon X3440 2.53GHz 8MB 4C/8T 1333MHz Turbo (95W)	<b>S26361-F3578-E344</b>	on special release
Xeon X3450 2.66GHz 8MB 4C/8T 1333MHz Turbo (95W)	<b>S26361-F3578-E345</b>	
Xeon X3460 2.80GHz 8MB 4C/8T 1333MHz Turbo (95W)	<b>S26361-F3578-E346</b>	
Xeon X3470 2.93GHz 8MB 4C/8T 1333MHz Turbo (95W)	<b>S26361-F3578-E347</b>	
Xeon X3480 3.06GHz 8MB 4C/8T 1333MHz Turbo (95W)	<b>S26361-F3578-E348</b>	on special release

**Low Voltage Xeon CPU's**  
- 1x 64-bit Intel Xeon LV UP (4/8MB shared TLC = Third Level Cache)  
Hyper-Threading (HT); 1066 or 1333 MHz DDR3 Bus and heat pipe  
occupies socket for one CPU

Xeon L3406 2.26GHz 4MB 2C/4T 1066MHz Turbo (30W)	<b>S26361-F3586-E226</b>
Xeon L3426 1.86GHz 8MB 4C/8T 1333MHz Turbo (45W)	<b>S26361-F3586-E186</b>

**Section III Memory**

There are 6 memory slots to be used for max. 6 registered DIMMS or max. 4 unbuffered DIMMS.  
Registered DIMMS are configurable for XEON CPUs only  
=> max. 24GB registered DDR3 RAM for RDIMMs with 4GB modules  
=> max. 16GB unbuffered DDR3 RAM for UDIMMs with 4GB modules

**Minimum one memory module or order code = first memory**

4x / 6x

Unbuffered (ub) UDIMMs	Registered (reg) RDIMMs
- One DDR3- ub ECC memory module	- One DDR3 reg ECC memory module
1GB 1333 SR <b>S26361-F3335-E513</b>	2GB 1333 SR/DR <b>S26361-F3336-E514</b> max 6x
2GB 1333 SR/DR <b>S26361-F3335-E514</b>	4GB 1333 DR <b>S26361-F3336-E515</b> max 6x
4GB 1333 DR <b>S26361-F3335-E515</b>	8GB 1066 QR <b>S26361-F3336-E516</b> max 4x
Choose up to 4 order codes above.	Choose up to 4 / 6 order codes above for 4C CPU type only ! not for Pentium, Core i3, Celeron and Xeon L3406

Unbuffered UDIMMs cannot be mixed with registered RDIMMs

**Section IV Graphics**

Graphics controller integrated in iRMC2 (Integrated Remote Management Controller)  
( max. Resolution: 1600 x 1200 at 16bpp )

<b>S26361-F2748-E537</b> PY VGA LP card 512MB PCI-e x1 NVIDIA NVS300 512 MB PCIe-x1 2x DVI or 2x VGA or 1x DVI plus 1x VGA cables adapters included Dual head + fully 3-D supported for Windows OS only native driver support for Linux OS full high bracket max. 1x per system
--



The high end optional NVIDIA NVS300 graphic card offers dual head operation and fully 3D video support.  
The cables for either two times DVI or VGA connections are part of the delivery.  
**Remote Video direction via iRMC must be disabled.**  
This PCIe-x1 card can also be installed in any PCIe-x4, x8 or x16 slot.  
Only one card per server is allowed.

**PY VGA card must be installed in slot 4**



<b>S26361-F2748-L537</b> PY VGA LP card 512MB PCI-e x1 for loose delivery
---

D

**Section V Energy Star**

<b>S26361-F3301-E151</b>
TX150S7 <b>E-Star Fam1</b>
for all dual core CPUs with std. PSU
Limits configuration in accordance with Energy Star requirements
max. 1x per system

<b>S26361-F3301-E152</b>
TX150 S7 <b>E-Star Fam2</b>
for all quad core CPUs with red. PSU
Limits configuration in accordance with Energy Star requirements
max. 1x per system

Please select  
**Estar Fam1** for all base units with std PSU: S26361-K1265-V101 or -201 or  
**Estar Fam2** for all base units with red PSU: S26361-K1265-V201, -V401, -V601 or -V801

**All following order units are not allowed together with TX150S7 E-Star Fam1:**

Xeon X3430	<a href="#">S26361-F3578-E343</a>
Xeon X3440	<a href="#">S26361-F3578-E344</a>
Xeon X3450	<a href="#">S26361-F3578-E345</a>
Xeon X3460	<a href="#">S26361-F3578-E346</a>
Xeon X3470	<a href="#">S26361-F3578-E347</a>
Xeon X3480	<a href="#">S26361-F3578-E348</a>
Xeon L3426	<a href="#">S26361-F3586-E186</a>

**All following order units are not allowed together with TX150S7 E-Star Fam2:**

Celeron G1101	<a href="#">S26361-F3589-E226</a>
Pentium G6950	<a href="#">S26361-F3588-E280</a>
Core i3-530	<a href="#">S26361-F3587-E293</a>
Core i3-540	<a href="#">S26361-F3587-E306</a>
Core i3-550	<a href="#">S26361-F3587-E320</a>
Xeon L3406	<a href="#">S26361-F3586-E306</a>
Memory 1GB ub.	<a href="#">S26361-F3335-E226</a>

**All following components are not allowed together with any Energy Star certification! If you need one of them, please cancel the Energy star order component!**

**Tape Drives w. Controller**

<b>S26361-F3257-E4</b>
4 port <b>SAS</b> RAID Controller
<b>S26361-F3626-E1/F3627-E1</b>
Tape drive LTO4/5HH Ultrium SAS
<b>S26361-F3561-E4</b>
Tape drive LTO3HH Ultrium SAS
<b>S26361-F4009-E4</b>
Tape drive LTO2HH Ultrium SAS

**USB Tape Drives**

<b>S26361-F3324-E4</b>
Tape drive DDS Gen5 USB 5.25"
<b>S26361-F3325-E4</b>
Tape drive DDS Gen6 USB 5.25"
<b>S26361-...</b>
Tape drive DDSGen7 USB 5.25"
<b>S26361-F3857-E4</b>
RDX drive USB 5.25" internal

**LAN Controller**

<b>S26361-F3462-E1</b>
Gigabit Ethernet Quad 1000TX
<b>S26361-F3555-E1</b>
10 Gigabit Eth. Contr. 2port SFP+

**Controller for ext. Backup or SAS**

<b>S26361-F3270-E1</b>
SCSI U320 Controller
<b>S26361-F3271-E1</b>
8port SAS
<b>S26361-F3593-E1</b>
8 port SAS RAID Controller

**3.5" SAS HDDs**


<b>S26361-F3291-E514</b>
HD 146GB 15krpm 3.5"
<b>S26361-F4005-E530</b>
HD 300GB 15krpm 3.5"
<b>S26361-F4005-E545</b>
HD 450GB 15krpm 3.5"
<b>S26361-F4005-E560</b>
HD 600GB 15krpm 3.5"

**VGA Card**


<b>S26361-F2748-E533</b>
PY VGA card 256MB PCI-e x1

D

**Section VI Accessible drives**

 There are 3 bays (1.6" x 5.25") for accessible drives.

**S26361-F2826-E204**  
 Mounting Kit DVD(s) + LSP/LSD  
 Occupies one 5.25" x 1.6" bays  
 in the accessible bay area  
 Offers bays for:  
 - 1x LSP/LSD option  
 - 1x 0.5" x 5.25" SATA DVD  
 max. 1x per system

 see Conf. diagram  
 Option A

**S26361-F2557-E202**  
 Local Service Panel incl. ad.  
 Customer Self Service  
 LSP module incl. adapter  
 0.5" x 5.25"  
 max. 1x per System

**S26361-F2557-E105**  
 Local Service Display incl. ad.  
 Customer Self Service  
 LSD module incl. adapter  
 0.5" x 5.25"  
 max. 1x per System

**S26361-F3641-E2**  
 Blu-ray Triple Writer slim SATA  
 6x BD-RW, 8x DVD, 24x CD  
 BD DL and all CD/DVD formats  
 0.5 x 5.25"  
 max. 1x per system

**S26361-F3531-E2**  
 Blu-ray Combo slim SATA  
 6x BD-ROM, 16x DVD, 40x CD  
 BD DL and all CD/DVD formats  
 0.5 x 5.25", black bezel  
 max. 1x per system


**S26361-F3269-E2**  
 DVD-RW supermulti slim SATA  
 all formats, DUAL/DL, DVD-RAM  
 only W2K, W3K and Linux  
 0.5 x 5.25", black bezel  
 max. 1x per system

**S26361-F3266-E2**  
 DVD-ROM HH SATA  
 16x DVD 48x CD  
 1.6 x 5.25", black bezel  
 max. 1x per system

**S26361-F3267-E2**  
 DVD-RW supermulti HH SATA  
 all formats, DUAL/DL, DVD-RAM  
 only W2K, W3K and Linux  
 1.6 x 5.25", black bezel  
 max. 1x per system

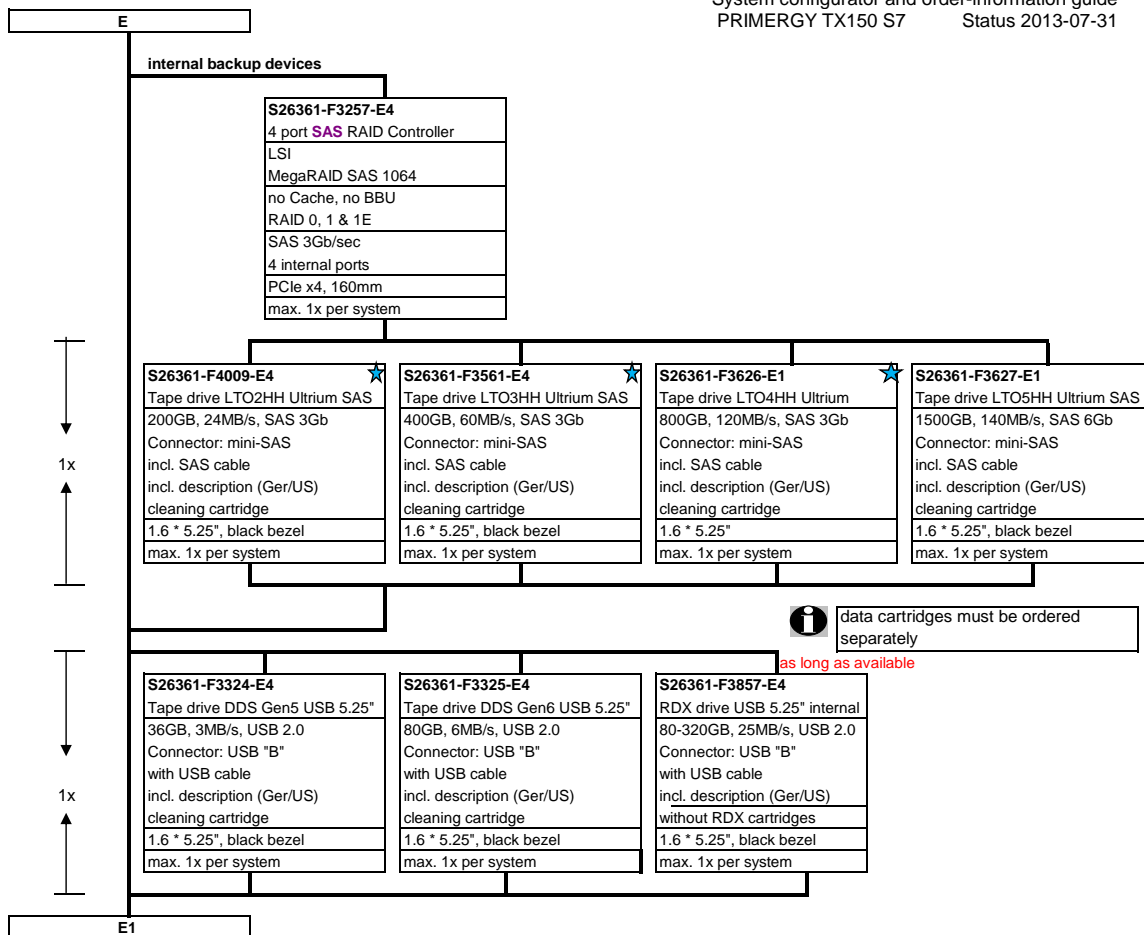
**S26361-F3530-E2**  
 Blu-ray Combo HH SATA  
 6x BD-ROM, 16x DVD, 40x CD  
 BD DL and all CD/DVD formats  
 1.6 x 5.25", black bezel  
 max. 1x per system

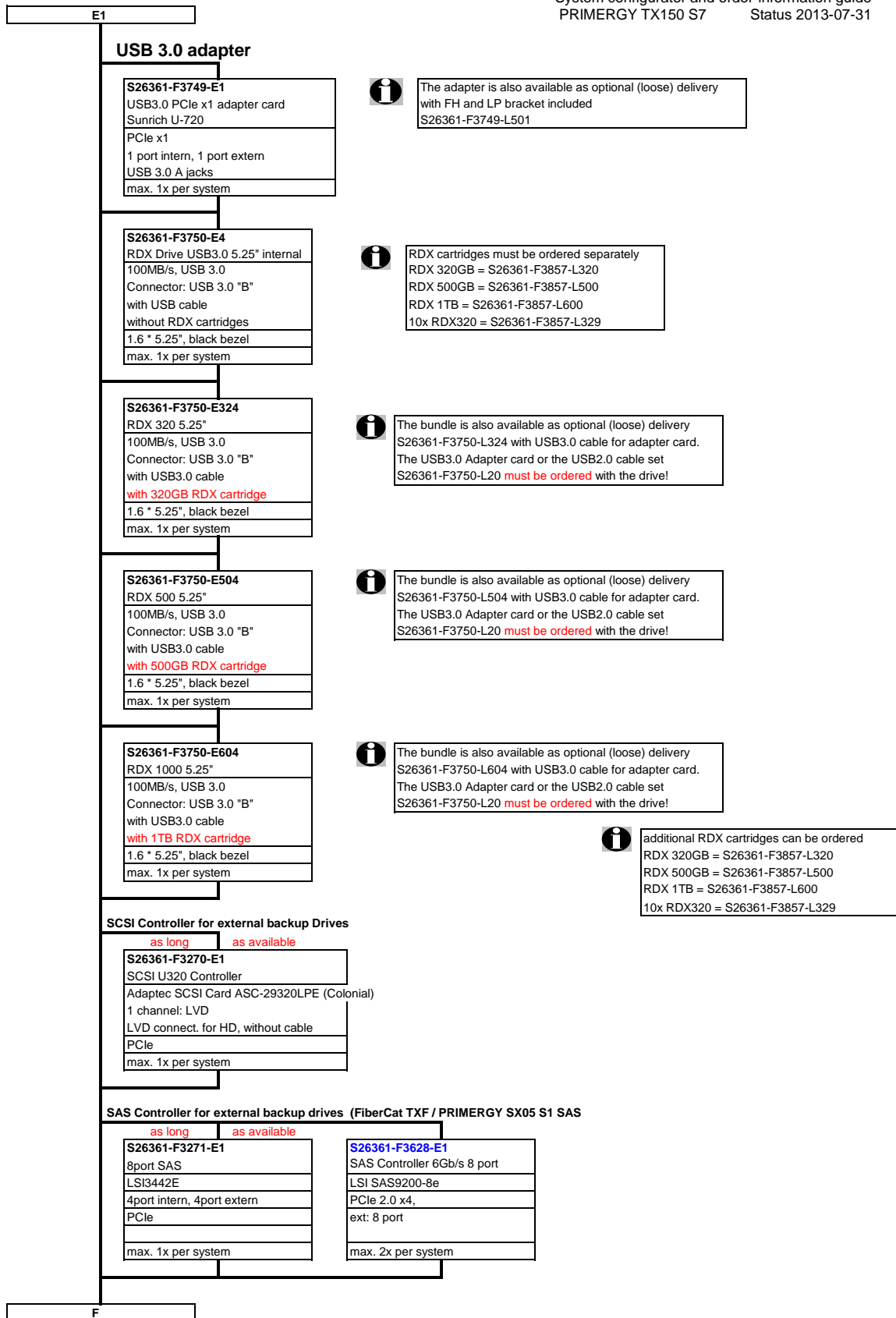
**S26361-F3585-E2**  
 Blu-ray Triple Writer HH SATA  
 4x BD-RW, 16x DVD, 40x CD  
 BD DL and all CD/DVD formats  
 1.6 x 5.25", black bezel  
 max. 1x per system

 Following USB Components are available

1) USB DVD SM / Blu-Ray	
External SuperMulti Drive (as soon as released)	S26341-F103-L119
External Blu-Ray Drive (as soon as released)	S26341-F103-L120
2) USB Keyboard:	S26381-K340-V120
KBPC PX D, professional keyboard	
3) USB Mouse:	S26381-K415-L100
Optical Wheel Mouse Tilt USB/PS2	
4) USB Memorybird:	
MyUSBS A910 8GB	S26391-F6048-L208
MyUSBS A910 16GB	S26391-F6048-L216

E





F

**Section VII Hard disks drives**

**Configurations with Eco SATA can only be mixed with BC SATA HDD type**  
**SAS and BC SATA drives with the same size can be mixed, but not used in one logical RAID volume**

**SAS/SATA LFF (3.5") Base Units: SAS HDDs Require SAS Controller! see section VIII internal Disk Array**

There is a 6 port SATA controller in the Base Unit for connection of up to 4 SATA LFF hard disks  
For up to 4 3.5" SAS hard Drives, you must configure 1 of 3 different 8port SAS controller

4/6x

<b>Business Critical (BC) SATA 3Gb/s HD 3.5" with hot plug/hot replace tray</b>	
500GB 7.200rpm,<9,0ms, 8MB Cache	<a href="#">S26361-F3294-E500</a>
1000GB 7.200rpm,<9,0ms, 8MB Cache	<a href="#">S26361-F3294-E100</a>
2000GB 7.200rpm,<9,0ms, 8MB Cache	<a href="#">S26361-F3294-E200</a>
<b>max. 4x (or 6x) per system</b>	

<b>S26361-F3293-E250</b>	
HD 250GB 7.2krpm 3.5"	
7200rpm,<9.0 ms, 8MB Cache	
<b>ECO SATA 3Gb/s</b>	
hot plug/hot replace tray	
<b>max. 4x (or 6x) per system</b>	

G

<b>SAS 6Gb/s 3.5" with hot plug/hot replace tray</b>	
300GB 15000rpm,<4,5ms, 16MB Cache	<a href="#">S26361-F4005-E530</a>
450GB 15000rpm,<4,5ms, 16MB Cache	<a href="#">S26361-F4005-E545</a>
600GB 15000rpm,<4,5ms, 16MB Cache	<a href="#">S26361-F4005-E560</a>
<b>max. 4x (or 6x) per system</b>	

**SAS / SATA SFF (2.5") Base Units: SAS HDDs Require SAS Controller! see section VIII internal Disk Array**

you can choose between 3 types of 8 port SAS controller for the Base Unit.  
Up to 8 SAS /SATA SFF (2.5") hard disks can be configured as standard.

8x

<b>SSD SATA 6Gb/s MLC HOT PLUG</b>	
SSD 100GB, Mainstream Perf., Mainstream Endurance*	<a href="#">S26361-F5225-E100</a>
SSD 200GB, Mainstream Perf., Mainstream Endurance*	<a href="#">S26361-F5225-E200</a>
SSD 400GB, Mainstream Perf., Mainstream Endurance*	<a href="#">S26361-F5225-E400</a>
<b>max. 8x per system</b>	

**\*) Mainstream Endurance 10DWPD over 5y**  
**Managed Life Model**

<b>Business Critical (BC) SATA 3Gb/s HD 2.5" with hot plug/hot replace tray</b>	
250GB 7.200rpm,<10,5ms, 8MB Cache	<a href="#">S26361-F3601-E250</a>
500GB 7.200rpm,<10,5ms, 8MB Cache	<a href="#">S26361-F3601-E500</a>
1000GB 7.200rpm,<10,5ms, 8MB Cache	<a href="#">S26361-F3601-E100</a>
<b>max. 8x per system</b>	

<b>ECO SATA 3Gb/s HD 2.5" with hot plug/hot replace tray</b>	
160GB 5.400rpm,<10,5ms, 8MB Cache	<a href="#">S26361-F3297-E160</a>
320GB 5.400rpm,<10,5ms, 8MB Cache	<a href="#">S26361-F3297-E320</a>
500GB 5.400rpm,<10,5ms, 8MB Cache	<a href="#">S26361-F3297-E500</a>
<b>max. 8x per system</b>	

**Mix of ECO SATA with SAS HDDs is not possible !**

G

<b>SAS 6Gb/s 2.5" with hot plug/hot replace tray</b>	
300GB 10000rpm,<4,5ms, 16MB Cache	<a href="#">S26361-F4482-E130</a>
450GB 10000rpm,<4,5ms, 16MB Cache	<a href="#">S26361-F4482-E145</a>
600GB 10000rpm,<4,5ms, 16MB Cache	<a href="#">S26361-F4482-E160</a>
900GB 10000rpm,<4,5ms, 32MB Cache	<a href="#">S26361-F4482-E190</a>
<b>max. 8x per system</b>	

**configuration of SAS-HDDs requires SAS RAID controller**

G



G

**Section VIII External SAS Disk Array**

SAS RAID controller for JBOD subsystems


<b>S26361-F3593-E1</b>
8 port SAS RAID Controller
LSI
<b>MegaRAID SAS9280-8e 6Gb/s</b>
512MB Cache with ECC
RAID 0, 1, 10, 5, 50, 6 & 60
without iBBU
SAS 3Gb/sec
8 port external
PCIe x4, 167mm
low profile bracket
max. 1x per system

<b>S26361-F3257-E255</b>
Cache Battery Backup Unit
max. 1x per Controller


BBU max. 1x per system possible for loose delivery please order
<b>S26361-F3257-L210</b>

**Section IX Internal Disk Array**

**SATA Configuration**

 **SATA Base Units contain a 6-port on-board SATA controller supporting RAID Levels 0, 1, 10**

**SAS Configuration**

 you can choose between 3 types of 8 port SAS controller for the Base Unit:  
 - LSI 1068e or 2008 based Modular RAID 0,1 (IME)  
 - LSI 2108 based Modular RAID 5,6  
 if you want to use SAS harddisks or a 2.5" Base Unit one Controller is required  
 On special request based on customising projects up to 4 SATA 2.5" HDDs can be configured without a controller


Controller for 1 to 8 LFF (3.5") or SFF (2.5") HDD

<b>S26361-F3257-E8</b>
8 port SAS RAID Controller
LSI
MegaRAID SAS 1068
no Cache, no BBU
RAID 0, 1 & 1E
SAS 3Gb/sec
8 internal ports
PCIe x4, 160mm
max. 1x per system

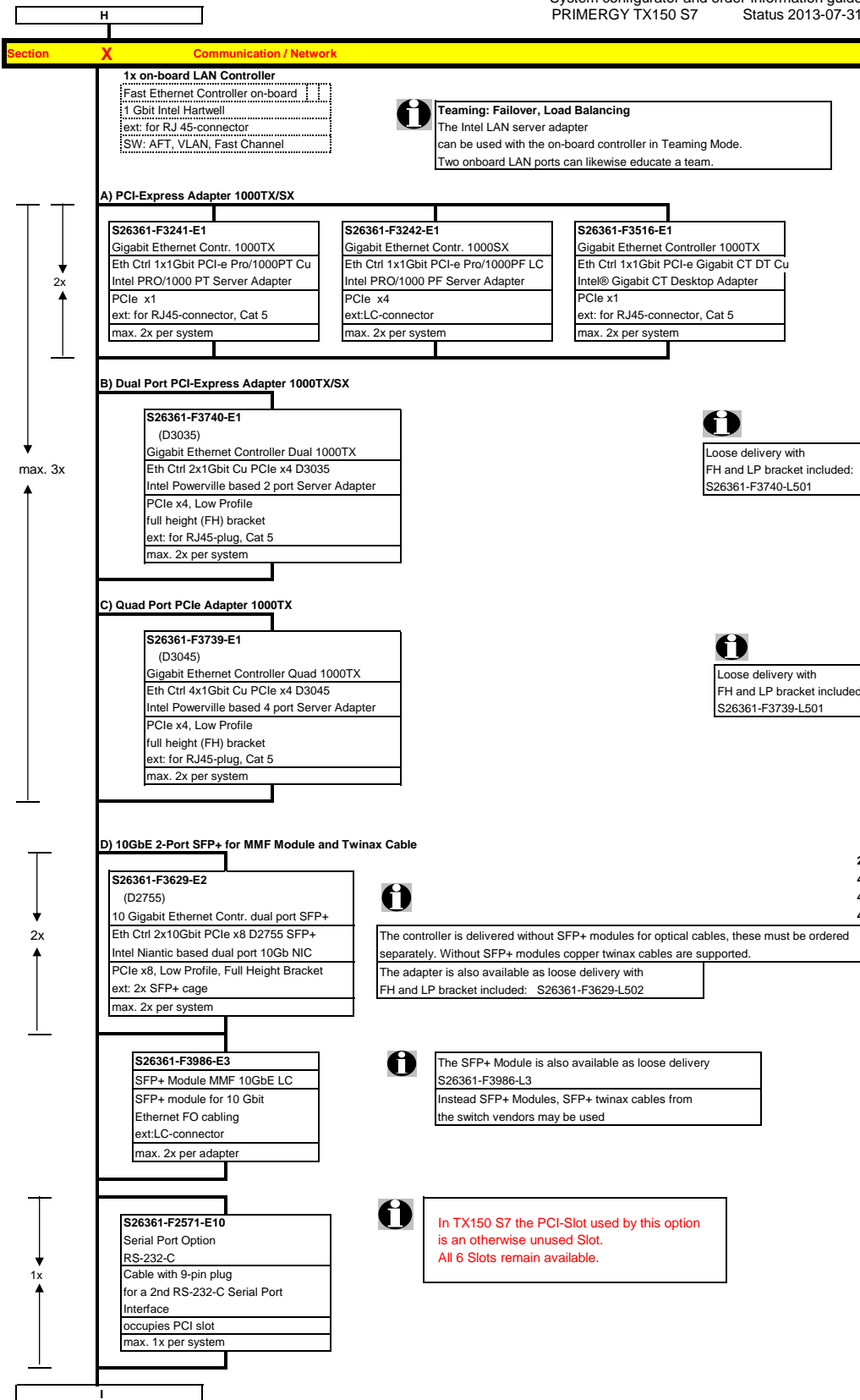
<b>S26361-F3554-E8</b>
RAID Ctrl SAS 6G 8port internal
Based on chip LSI SAS2008
LSI MegaRAID
no Cache, no BBU
RAID 0, 1 & 1E
Support for 3Gb/s and 6Gb/s
SATA and SAS hard drives
PCIe x8
Low-profile MD2 form factor
max. 1x per system

<b>S26361-F3554-E512</b>
RAID Ctrl SAS 6G 8port internal
Based on chip LSI SAS2108
LSI MegaRAID
512MB Cache with ECC
RAID 0, 1, 10, 5, 50, 6, 60
optional BBU
Support for 3Gb/s and 6Gb/s
SATA and SAS hard drives
PCIe x8
Low-profile MD2 form factor
max. 1x per system

<b>S26361-F3257-E255</b>
Cache Battery Backup Unit
max. 1x per Controller

 L-Order-Number is:  
S26361-F3257-L210

H



I

**Section XI System management options**

<b>S26361-F1790-E241</b> <b>iRMC2 advanced pack</b> integrated remote management controller activation key for graphical console redirection and remote media redirection max. 1x per system
--

**Section XII Miscellaneous**

<b>S26361-F2571-E10</b> External on-board serial port Interface Cable and external connector interface (9 pins) fit's PCI cutoff (see Info-Box) max. 1x per system for ext.
--



housing offers additional cutoff - no PCI slot occupied

J

**Section XIII Country specific power cords**

S26361-F3301-E120  
 CCC Certification for China

**i** Since the beginning of this year the specifications for the approval and production monitoring for China (CCC) have become stricter. This is why the CCC certification label must in future be ordered separately

**i** A country specific power cord has to be ordered for all floorstand versions:  
 - once per basic unit and an additional second cable  
 - if an second hot plug, redundant power supply modul is ordered.

max.  
 2 x

PRIMERGY TX150 S7 Floorstand

PRIMERGY TX150 S7 Rack

**Power cord for following countries:**  
 1,8 m, grey

T26139-Y1740-E10	D, A, B, F, NL, FIN, S, N, E, P, RUS, TR
T26139-Y1742-E10	USA, Canada
T26139-Y1743-E10	Switzerland
T26139-Y1744-E10	UK, Ireland
T26139-Y1745-E10	Italy
T26139-Y1746-E10	Denmark
T26139-Y3850-E10	Option "no powercord", for Countries without specific cable orderable like e.g. China

**i** Country specific power cords are not required for rack versions, except for USA & Canada. Power cords are shipped in a rack version with inlet connector for non-heating apparatus. (1x with Standard PSU, 2x with hot plug upgrade)

**i** **T26139-Y1742-E10 USA, Canada**  
 For shipments to USA&Canada, you have to order one power cord (1,8m, grey) per power supply.

**i** Attention: For connection of a monitor to the system an additional country specific power cord has to be ordered as option.

**Power cord for optional monitor connection for the following countries:**  
 1.8m, grey

T26139-Y1740-L10	D, A, B, F, NL, FIN, N, S, E, P, RUS, TR
T26139-Y1742-L10	USA, Canada
T26139-Y1744-L10	UK, IR
T26139-Y1745-L10	Italy
T26139-Y1746-L10	Denmark

**i** **Options and other peripherals**  
 For other options, refer to SystemArchitect and Pricelist.  
 These options are supplied lose with the shipment.  
 For suitable peripherals for this product, please refer to SystemArchitect.

Option for Floorstand

**USB keyboards for floorstand versions for following countries:**

USB standard Keyboard KB400	USB standard Keyboard KB500		USB professional Keyboard KBPC PX	USB professional Keyboard KBPC PX ECO
S26381-K550-E170	S26381-K500-E170	Switzerland	S26381-K340-E170	S26381-K341-E170
S26381-K550-E104	S26381-K500-E104	Czech/Slovak	S26381-K340-E104	S26381-K341-E104
S26381-K550-E120	S26381-K500-E120	Germany	S26381-K340-E120	S26381-K341-E120
S26381-K550-E180	S26381-K500-E180	Spain	S26381-K340-E180	S26381-K341-E180
S26381-K550-E140	S26381-K500-E140	France	S26381-K340-E140	S26381-K341-E140
S26381-K550-E165	S26381-K500-E165	United Kingdom	S26381-K340-E165	S26381-K341-E165
S26381-K550-E185	S26381-K500-E185	Italy	S26381-K340-E185	S26381-K341-E185
S26381-K550-E154	S26381-K500-E155	Sweden / Finland	S26381-K340-E155	S26381-K341-E154
S26381-K550-E102	S26381-K500-E110	USA / international	S26381-K340-E110	S26381-K341-E110

option for floorstand

**Optional Mouse**  
 S26381-K431-E100 Mouse M480 black  
 S26381-K431-E101 Mouse M480 grey

End PRIMERGY TX150 S7

## Change Report

Date	Order number	Changes
2013-05-21	S26361-F3750-E324/504/E604	HDD/SSD Description updated.
2013-03-15	S26361-F3750-E324/504/E604	RDX & Cartridge bundles added
2012-11-22	F3749-E4 and F3750-E4	"as soon as available" removed
2012-11-22	S26361-F3857-E4	"as long as available" added
2012-10-08	S26361-F3749-Ex	Added USB3.0 Adapter
2012-10-08	S26361-F3750-Ex	Added RDX Drive
2012-09-18	S26361-F3270-E1 / S26361-F3271	"as long as available" added
2012-07-16	S26361-F3857-L160/L169	RDX Cartridge 160GB is EOL => removed
2012-07-10	S26361-F5225-Exxx	add SSD SATA MLC 100/200/400GB, remove 32/64GB SSD
2012-02-28	S26361-F3301-E120	add CCC Certification
2012-01-30	S26361-F3641-E2	new Blue-ray Triple Writer added
2012-01-27	L110	for BBU eliminated
2011-12-21	S26361-F4482-E114	SAS HD 6G 144GB - no longer available
2011-10-01	S26361-F3601-E250	new BC SATA HD - now available
2011-10-01	S26361-F3298-E64	64 GB SSD - no longer available
2011-05-03	S26361-F3610-E2/L502	Formal change from E1 / L501
2011-04-07	S26361-F2735-L202	Adapter angle ...L31 must be ordered for asym. PC/DC racks additionally
2010-12-30	S26361-F3585-E2	Blu-ray Triple Writer HH SATA - now available
2010-11-18	S26361-F3628-E1	Ctrl SAS 6G 8port external added
2010-09-30	S26361-F3611-E1	New Quad LAN GbE controller - now available
2010-09-30	S26361-F3610-E1	New Dual LAN GbE controller - now available
2010-09-30	S26361-F3593-E1	8-port SAS-RAID Controller external - now available
2010-09-13	S26361-F3626-E1	Upgrade - New LTO4 SAS drive
2010-09-13	S26361-F3627-E1	New LTO5 SAS drive
26.08.2010	S26361-F4006-E145	new HD - as soon as available
26.08.2010	S26361-F4006-E160	new HD - as soon as available
01.08.2010	S26361-F3589-E226	Celeron G1101 2.26GHz 2MB 2C 1066MHz (73W) entfällt
2010-08-01	S26361-F3611-E1	New Quad LAN GbE controller - as soon as available
2010-08-01	S26361-F3610-E1	New Dual LAN GbE controller - as soon as available
2010-06-23	S26381-K431-E101	Added Mouse M480 grey
2010-06-15	S26361-F3578-E347	Update on released CPUs
2010-05-30		New KB400 and professional KBPC PX ECO Keyboards added
2010-05-18	S26361-F3578-E348	Energy Star Restrictions extended
2010-02-18	S26361-F3593-E1	MegaRAID SAS9280-8e 6Gb/s added
2010-01-11	S26361-F3294-E200	new 2000GB SATA HD - as soon as available
2010-01-01		First release