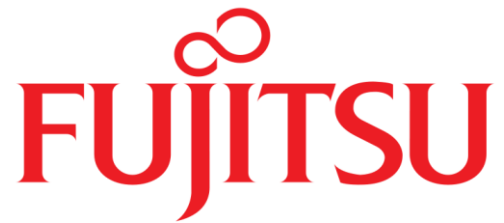


PRIMERGY TX1320 M3  
small form factor  
Tower server



Chapter	Folder	Content
	Cover	List of content, Instructions for usage of this configurator, abbreviations
	Description	System Description for easier understanding
1	Base	describes base unit of TX1320 M3
2		describes rack mount kits and services
3	CPU	Order code and Infos of processors
4	RAM	DDR4 System memory (RAM) and memory modes
5	GFX	Graphics-, Grid-cards, GPU and Xeon Co processors
6	HD_cage	HDD cage kits
7	RAID	SAS / RAID Controller and components
8	ODD	optical disk drives (DVD, DVD-rw, Blu ray)
9	Backup	RDX drive
10	HD_SSD	Storage drives - SAS/SATA SSD & HDD
11	LAN_FC_IB	LAN Components
12		Fibre Channel Controller (n.a. for TX1320 M3)
13		Infiniband Controller (n.a. for TX1320 M3)
14	PSU	Power supply units, power cables, country specific opt.
15	USB_devices	Keyboards, Mice, USB devices
16	others	System Management, ATD, RS232 port, TPM module

# Instructions

This document contains basic product and configuration information that supports you in more complicated configurations.

In any case we recommend to use the PC-/SystemArchitect to make sure, that you configure a valid system.

This System configurator is divided into several chapters. They are identical to the current price list and PC-/SystemArchitect.

Please follow this document step by step from the top to the bottom.

## Chapter xx - description of chapter

Text fields with grey color offer extra information for related topics (e.g prerequisites, technical back ground, configuration rules, limitations, ...)

<b>S26361-F4610-E2</b>
<b>S26361-F4610-L3</b>
PLAN 2x1Gb Ethern. Controller
i350-T2 chip (based on Intel Powerville) offers 2x1Gb RJ45 connectors
PCIe Gen2 x4 full height card
max. 6x per system

<-- order code E-part (bold) --

<-- order code L-part (bold)

<-- "name" of this part

<--description of this part, in some cases as well description of content

<--requires a free PCIe slot --> means total amount of PCIe slots reduced

<--indicates how often this part can be configured in the related Server

### For further information see:

Link to datasheet:

[http:// xxx](http://xxx)

[http://ts.fujitsu.com/products/standard\\_servers/index.html](http://ts.fujitsu.com/products/standard_servers/index.html)

(internet)

[https://partners.ts.fujitsu.com/com/order-supply/configurators/primergy\\_config/Pages/default.aspx](https://partners.ts.fujitsu.com/com/order-supply/configurators/primergy_config/Pages/default.aspx)

(extranet)

Fujitsu is providing the content of this document with very high accuracy. In case you identify a mistake, we would kindly encourage you to inform us. We kindly ask for understanding, that errors still may occur and that Fujitsu may change this document without notice

The PRIMERGY TX1320 M3 Server is available in 3 versions:

**Start**

choose base unit

- Base unit for 2x 3.5" non hot plug HDD w/ std. PSU
- Base base unit for 4x/8x 2.5" hot plug HDD w/ std. PSU
- Base base unit for 4x/8x 2.5" hot plug HDD w/ hot plug PSU

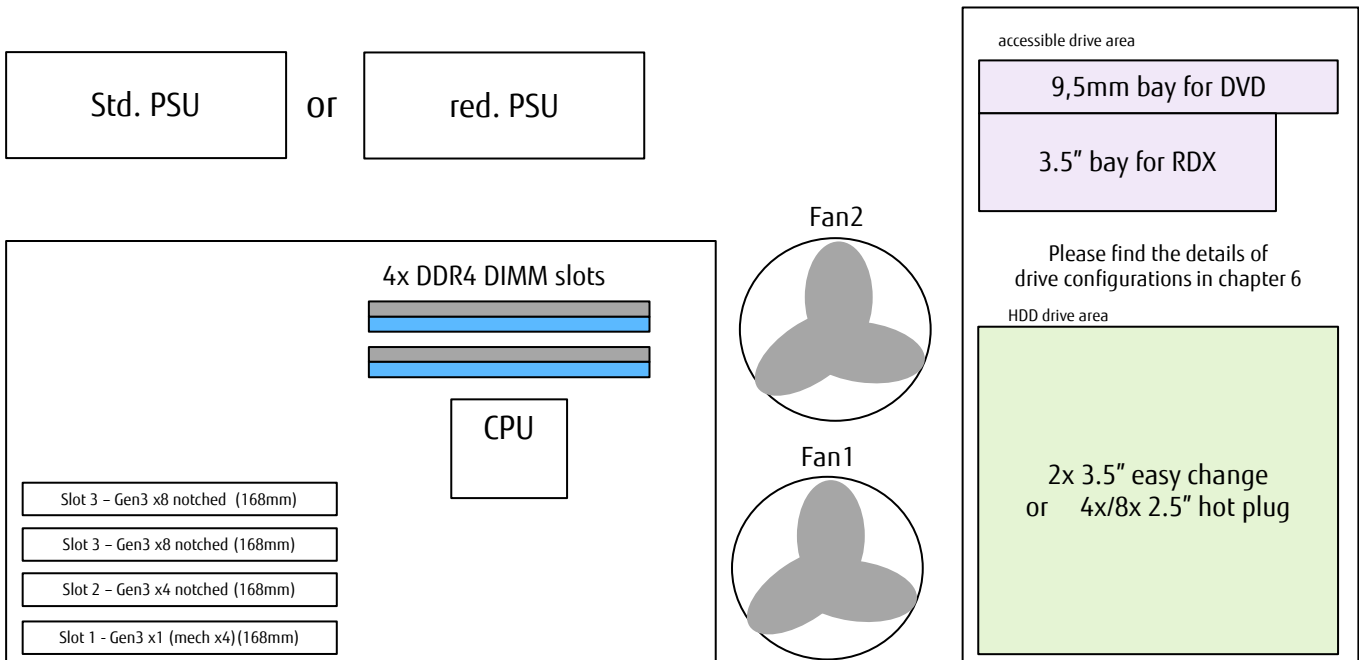
choose backup

- Independent from the base unit you can configure an RDX backup drive

choose optical drive

- Select 9,5mm DVD or Blu Ray drive

Please find all details, possible and released configurations in the chapter 6 - "HD\_cage"



**Chapter 1 - base unit**

**Start**

**Base Unit**

For the PRIMERGY TX 1320 M3 you can choose between a version using a standard PSU and supporting up to 2x 3.5" easy change (non hot plug) HDD or a version using either a standard or an hot plug PSU and supporting up to 4x/8x 2.5" hot plug HDD.

**HDD Extension Box**

The base unit supporting hot plug HDD may be extended to 8x 2.5" HDD by using the optional 2nd HDD backplane.

**Server Management**

iRMC S4 (integrated Remote Management Controller) on-board with dedicated (or shared) 10/100/1000 Service LAN-port and integrated graphics controller. With the integrated onboard indicators and controls You can highlight easily failed components via LEDs. The LEDs can be displayed during service even without mains connection by simply pressing the "indicate CSS" button.

**Platform**

Fujitsu Systemboard D3373 made in Germany based on Chipset Intel® C236

> cables for connection to the modular or onboard controllers included

> Celeron, Pentium, Core i3 or Xeon E3-1200 v6 series CPUs

**Slots:**

Slot 4 PCIe-Gen3 x8 (notched) - supports modular RAID functions

Slot 3 PCIe-Gen3 x8 (notched) - preferred slot for Graphics Card option

Slot 2 PCIe-Gen3 x4 (notched)

Slot 1 PCIe-Gen3 x1 (mechanically x4) - may be used for legacy PCI option

**System RAM DDR4-2400 MHz**

4 memory slots for max. 64GB DDR4 RAM.

**LAN**

2x Intel i210 Gigabit Ethernet

**Software**

\* ServerView Suite Software incl. ServerStart, ServerBooks, Management Software and Updates

**Connectivity**

Interfaces at rear side

1x RS-232-C (serial, 9 pin)

2 LAN RJ45 (1 Gbit)

1 service LAN RJ45 (1 Gbit)

1x VGA (15 pins)

2x USB 3.0 & 4x USB 2.0 no USB wakeup

Interfaces at front

2x USB 3.0 no USB wakeup

Interfaces internal

1x internal USB 3.0 connectors for backup devices

1x UFM

2x SATA 6G (1x w/ SATA DOM support)

1x Mini SAS/SATA (4x SATA 6G)

**hot plug HDD**

**S26361-K1591-V101**

TX1320 M3 SFF Base Unit w/ std. PSU (2.5" HDD)

**S26361-K1591-V151**

TX1320 M3 SFF Base Unit w/ red. PSU (2.5" HDD)

**easy change HDD**

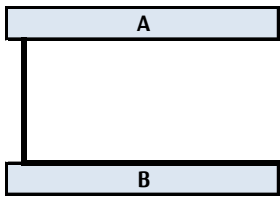
**S26361-K1591-V201**

TX1320 M3 LFF Base Unit (3.5" HDD)

A

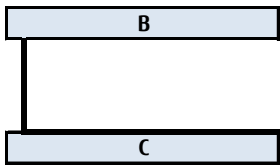


**Chapter 2 - Rack architecture**



Rackmount not supported by TX1320 M3

**Chapter 3 - Options for Base Unit**



no Base Unit Options available for TX1320 M3

**Chapter 3 - CPU**

**B**

One of following CPU 's has to be selected  
for an orderable basic unit

<b>Celeron (Kaby Lake-E)</b>	
64-bit Intel Celeron processor supporting DDR4 @ 2.133MHz	
Celeron G3930 2.9GHz 2C/2T 2MB 2133MHz (51W)	S26361-F4029-E103
<b>Pentium (Kaby Lake-E)</b>	
64-bit Intel Pentium processor supporting DDR4 @ 2.400MHz	
Pentium G4560 3.5GHz 2C/4T 3MB 2400MHz (54W)	S26361-F4029-E104
<b>Core i3 (Kaby Lake-E)</b>	
64-bit Intel Core i3 processor supporting DDR4 @ 2.400MHz	
Core i3-7100 3.9GHz 2C/4T 3MB 2400MHz (51W)	S26361-F4029-E107
<b>Xeon E3-12xx v6 (Kaby Lake-E)</b>	
64-bit Intel Xeon processor supporting DDR4 @ 2.400MHz	
Xeon E3-1220v6 3.0GHz 4C/4T 8MB 2400MHz Turbo (72W)	S26361-F4029-E120
Xeon E3-1225v6 3.3GHz 4C/4T 8MB 2400MHz Turbo (73W)	S26361-F4029-E125
Xeon E3-1230v6 3.5GHz 4C/8T 8MB 2400MHz Turbo (72W)	S26361-F4029-E130
Xeon E3-1240v6 3.7GHz 4C/8T 8MB 2400MHz Turbo (72W)	S26361-F4029-E140
Xeon E3-1270v6 3.8GHz 4C/8T 8MB 2400MHz Turbo (72W)	S26361-F4029-E170
Xeon E3-1280v6 3.9GHz 4C/8T 8MB 2400MHz Turbo (72W)	S26361-F4029-E180

On special release request only

On special release request only

**C**

**Chapter 4 - DDR4 System memory**

**D**

There are 2 memory banks with 2 DIMM slots each.

**Single channel memory configuration allow maximum flexibility:**  
Additional memory can be configured as single memory modules.

**Dual channel memory configurations for maximum performance:**  
For optimum performance memory has to be configured in pairs of memory modules with identical size.

max. 64GB unbuffered DDR4 RAM for UDIMMs with 16GB moduls @ 2.400 MT/s

**Note\*\*:** Memory is not included in the base unit and has to be configured separately, min 1x.

Unbuffered Memory (UDIMM) with ECC support			
4GB (1x4GB) 1Rx8 DDR4-2400 U ECC	single rank	S26361-F3909-E614	S26361-F3909-L614
8GB (1x8GB) 1Rx8 DDR4-2400 U ECC	single rank	S26361-F3909-E615	S26361-F3909-L615
16GB (1x16GB) 2Rx8 DDR4-2400 U ECC	Dual rank	S26361-F3909-E616	S26361-F3909-L616

**E**

On special release request only



**Chapter 5 - Graphics cards**

E

<b>S26361-F2748-E638</b>
<b>S26361-F2748-L638</b>
NVIDIA NVS315
Dual Head operation + professional 2-D or 3D supported by Windows operating systems
1x LFH 59 connector with cable kit for 2x DVI or 2x VGA included
occupies 1x PCIe 3.0 x8 slot
max. 1x per system

For deliveries to China with CCC label no graphic card is allowed within the configuration. It can be ordered as loose delivery only!

The high end optional NVIDIA NVS315 graphic card offers dual head operation and fully 3D video support. The cables for either two times DVI or VGA connections are part of the delivery. Remote Video direction via iRMC must be disabled.

NVS315 needs an notched or an x16 PCIe slot

<b>S26361-F4066-E401</b>
<b>S26361-F4066-L401</b>
PGRA CP NVIDIA Quadro P400
NVIDIA Quadro
2GB PCIe 3.0 x16
Connectors: 3x Mini-DP
no cable kits included cable must be ordered separately
Triple head + professional 2-D + 3-D supported for Windows OS native driver support for Linux OS
Low profile bracket
max. 1x per system

The high end optional NVIDIA Quadro P400 graphic card offers triple head operation and full 3D video support.

The cables kit is not included. It is necessary to order cable kit.

**Remote Video direction via iRMC must be disabled.**

<b>S26361-F4066-E11</b>
<b>S26361-F4066-L11</b>
MiniDP-DP ADAPTER
max. 3x per card

<b>S26361-F4066-E12</b>
<b>S26361-F4066-L12</b>
DP-VGA ADAPTER
max. 3x per card

<b>S26361-F4066-E13</b>
<b>S26361-F4066-L13</b>
DP-DVI ADAPTER
max. 3x per card

F

**Chapter 6 - HD drive cage**

**F**

Definition:  
 TX1320 M3 is available in three basic versions:  
 1. Base unit for 2x 3.5" non hot plug HDD w/ std. PSU  
 2. Base base unit for 4x/8x 2.5" hot plug HDD w/ std. PSU  
 3. Base base unit for 4x/8x 2.5" hot plug HDD w/ hot plug PSU

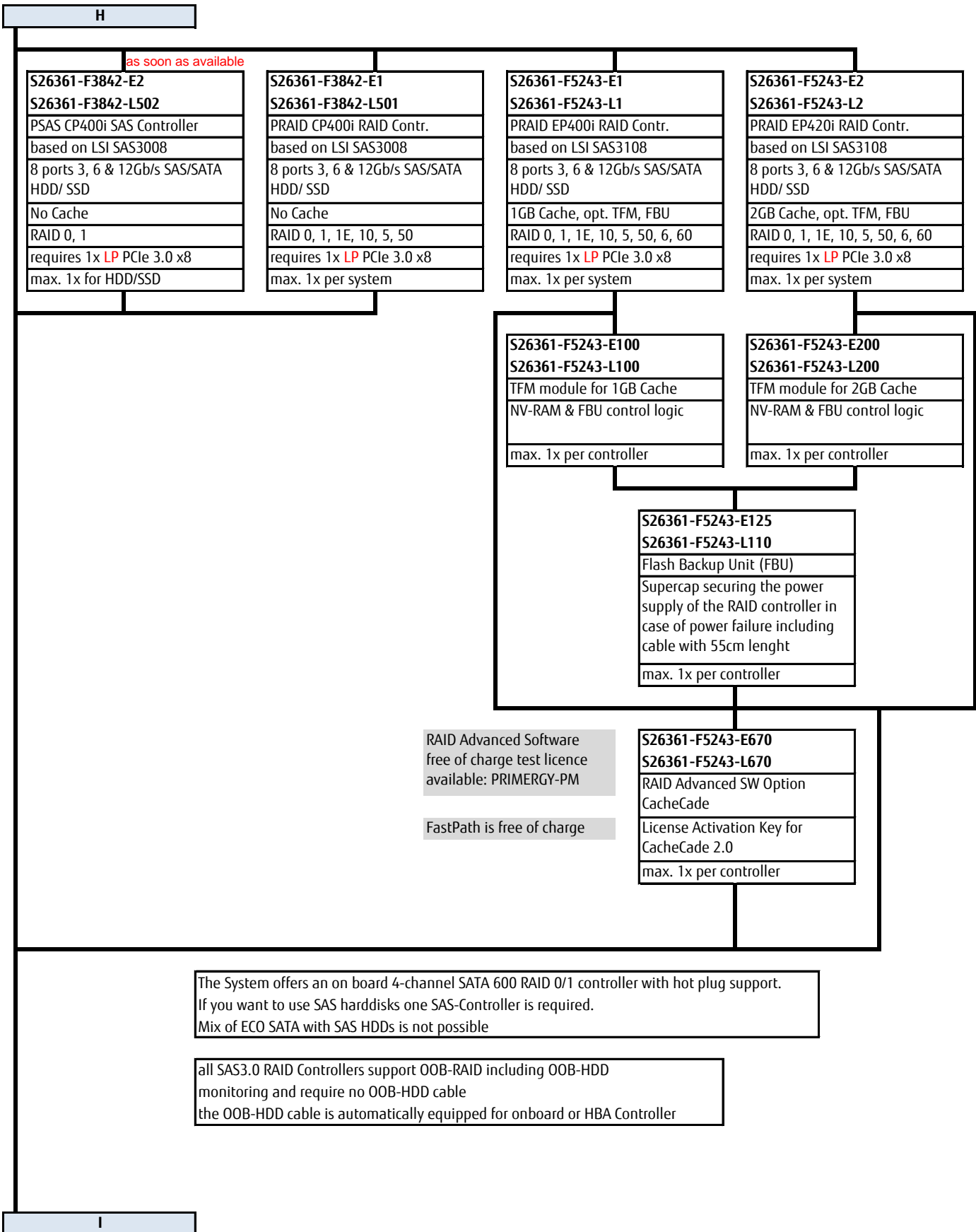
In case of 2.5" base unit you can configure an 2nd HDD Backplane for a total of 8x 2,5" hot plug HDD

<b>S26361-F5535-E3</b>
<b>S26361-F5535-L3</b>
2nd HDD Backplae
offers 4x SFF (2,5") hot plug HDD
max. 1x per system

- 1. for SFF base unit only
- 2. RAID controller required

**G**

**Chapter 7 - SAS / RAID Controller**



**Chapter 7 - SAS / RAID Controller**

**H**

onboard SATA controller with SW-RAID

<b>onboard controller for SATA HDD or SSD drives</b>					
4 ports 3, 6Gb/s SATA HDD/SSD	based on Intel chipset	No Cache	SW-RAID 0, 1	1x	onboard

internal HBA and RAID controller, no 2nd Level cache

<b>internal drive RAID / HBA controllers for SAS, SATA HDD or SSD drives</b>					
8 ports 3, 6 & 12Gb/s SAS/SATA HDD/ SSD, supports up to 8 devices without expander requires 1x LP PCIe 3.0 x8 (int.) slot, based on LSI SAS3008					
<b>PRAID CP400i RAID Contr.</b>	No Cache	RAID 0, 1, 1E, 10, 5, 50	1x	S26361-F3842-E1	S26361-F3842-L501
<b>PSAS CP400i HBA SAS Contr.</b>	No Cache	HBA + RAID 0, 1	1x	S26361-F3842-E2	S26361-F3842-L502

internal RAID controller with 2nd Level cache 1GB, 2GB

<b>internal drive RAID / SAS, SATA controllers with Cache and opt. TFM module + Flash Backup Unit and opt. Advanced SW Options</b>					
<b>PRAID EP400i RAID Contr.</b>	1GB Cache	RAID 0,1,1E,10,5,50,6,60	1x	S26361-F5243-E1	S26361-F5243-L1
8 ports 3, 6 & 12Gb/s SAS/SATA HDD/ SSD, supports up to 8 devices without expander requires 1x LP PCIe 3.0 x8 (int.) slot, based on LSI SAS3108					
optional Licence Activation Key, a free of charge test licence is available at PRIMERGY-PM, FastPath is included in Controller FW					
RAID Advanced SW Option CacheCade			1x	S26361-F5243-E670	S26361-F5243-L670
optional Transportable Flash module (TFM) and Flash Backup Unit (FBU), both components required					
<b>TFM module for 1GB Cache</b>	NV-RAM & FBU control logic		1x	S26361-F5243-E100	S26361-F5243-L100
<b>FBU Option for PRAID EP4xx:</b> Supercap securing the power supply of the RAID controller in case of power failure including cable with 25cm length			1x	S26361-F5243-E125	S26361-F5243-L110
<b>PRAID EP420i RAID Contr.</b>	2GB Cache	RAID 0,1,1E,10,5,50,6,60	1x	S26361-F5243-E2	S26361-F5243-L2
<b>PRAID EP420i for SafeStore R. Contr.</b>	2GB Cache	RAID 0,1,1E,10,5,50,6,60	1x	S26361-F5243-E4**	S26361-F5243-L4**
8 ports 3, 6 & 12Gb/s SAS/SATA HDD/ SSD, supports up to 8 devices without expander requires 1x LP PCIe 3.0 x8 (int.) slot, based on LSI SAS3108					
optional Licence Activation Key, a free of charge test licence is available at PRIMERGY-PM, FastPath is included in Controller FW					
RAID Advanced SW Option CacheCade			1x	S26361-F5243-E670	S26361-F5243-L670
optional TFM module and Flash Backup Unit (FBU), both components required					
<b>TFM module for 2GB Cache</b>	NV-RAM & FBU control logic		1x	S26361-F5243-E200	S26361-F5243-L200
<b>FBU Option for PRAID EP4xx:</b> Supercap securing the power supply of the RAID controller in case of power failure including cable with 25cm length			1x	S26361-F5243-E125	S26361-F5243-L110

internal NVMe, SAS, SATA RAID controller with 2nd Level cache 2GB, 4GB, 8GB

as soon as available, use for high cache size, NVMe not supported

<b>internal drive RAID / SAS controllers for E91 and SAS, SATA HDD or SSD drives</b>					
<b>PRAID EP540i RAID Contr. LP</b>	4GB Cache	RAID 0,1,1E,10,5,50,6,60	1x	S26361-F4041-E204	S26361-F5243-L504
<b>PRAID EP580i RAID Contr. LP</b>	8GB Cache	RAID 0,1,1E,10,5,50,6,60	1x	S26361-F4041-E208	S26361-F5243-L508
16 ports 3, 6 & 12Gb/s SAS/SATA HDD/ SSD, based on LSI SAS3516, supports up to 16 devices without expander 16 ports 8Gb/s NVMe PCIe, supports up to 4 x4 NVMe devices without expander includes Fastpath and SafeStore Advanced SW-Licence requires 1x LP PCIe 3.0 x8 (int.) slot, based on LSI SAS3516					
optional Flash Backup Unit (FBU), Transportable Flash module (TFM) is already included					
<b>FBU Option for PRAID EP5xx:</b> Supercap securing the power supply of the RAID controller in case of power failure including cable with 25cm length			1x	S26361-F4042-E155	S26361-F4042-L110

**Check:** the FBU can / cannot be combined with Advanced Thermal design.  
**Check:** how many FBU can be integrated per System

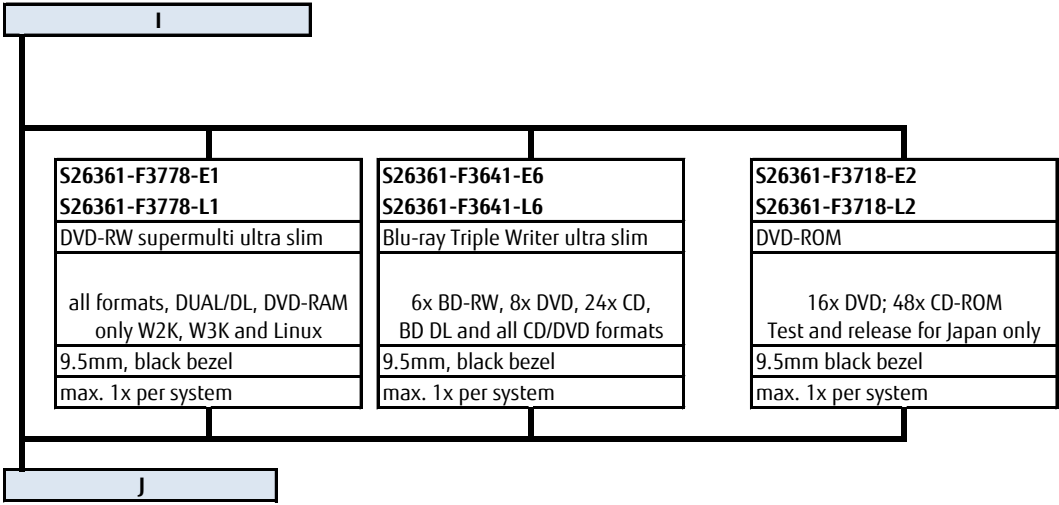
CacheCade + FastPath is supported  
SafeStore + FastPath is supported  
SafeStore + CacheCade is not supported

For Expander configurations PRAID EPxxxi are optimal for performance, PRAID CP400i is not released for expander configurations, max. 8 drives supported

\*\* SafeStore (SED) RAID controller require SED HDD or SSD devices

**I**

**Chapter 8 - ODD optical disk drives**



**Chapter 9 - backup drives**

TX1320 M3 is available in three basic versions:  
 1. Base unit for 2x 3.5" non hot plug HDD w/ std. PSU  
 2. Base base unit for 4x/8x 2.5" hot plug HDD w/ std. PSU  
 3. Base base unit for 4x/8x 2.5" hot plug HDD w/ hot plug PSU  
 In any case an RDX backup drive may be configured.

J

<b>RDX drive</b>				
RDX drive is not including Cartridge.				
RDX Drive cage (w/o cartriges)	USB 3.0, 3.5 inch / Half Height	1x	S26361-F3750-E5	S26361-F3750-L5

<b>RDX</b>				
RDX Cartridge				
RDX Cartridge 500GB		-	-	S26361-F3857-L500
RDX Cartridge 1TB		-	-	S26361-F3857-L600
RDX Cartridge 2TB		-	-	S26361-F3857-L700
RDX Cartridge 3TB		-	-	S26361-F3857-L800

K

**Chapter 10 - storage drives**

SAS drives and SATA drives can be mixed, but cannot be used in one logical RAID volume.  
SAS drives require a dedicated SAS / RAID Controller  
Hard Disk Sector Format Information  
512n HDD: 512 byte sectors on the drive media.  
512e (e=emulation) HDD: 4K physical sectors on the drive media with 512 byte logical configuration.  
512e HDD Disk Drives: VMware 6.0 or earlier is not supported.  
512n & 512e HDDs can be mixed, but cannot be used in one logical RAID volume.  
When using SSDs with VMware ESXi, select the SSDs that meet the endurance requirement described in KB2145210 below.  
<https://kb.vmware.com/kb/2145210>  
DWPD: Drive Writes Per Day over 5 years.  
SED (=Self Encrypting Drives) require either a RAID controller with ®SafeStore (SED) support or an HBA and in addition a software instance, supporting SED Key Management.  
It is strongly recommended to order SafeStore (SED) RAID controller with SED HDD or SSD devices for SafeStore (SED) functionality.

**HDD Classes:**  
Economic (ECO) SATA: Entry Class Drives.  
Business-Critical (BC) -SATA=Nearline SATA Enterprise Drives / 7.2Krpm, SATA 6G.  
Business-Critical (BC) -SAS Nearline SATA Enterprise Drives / 7.2Krpm, SAS 12G .  
Mission-Critical (MC)=SAS 10K and SAS 15K Enterprise Drives with max. performance and reliability.

**Warranty:**  
SSD and SATA DOM have a built-in Wear-Out indicator. In this case the warranty for such a component, as an exception to the system warranty, is restricted to the time period until the indicator reaches the exhaust level.

L

**2.5" (SFF) SATA SSD**

**SSD SATA 2.5" Mixed Use (SFF) Enterprise with hot plug/hot replace tray**

Capacity	Formfactor	Interface	Endurance	DWPD		order code E-part	order code L-part
240GB	2.5" (SFF)	SATA 6Gb/s	Mixed Use	3.6		S26361-F5675-E240	S26361-F5675-L240
480GB	2.5" (SFF)	SATA 6Gb/s	Mixed Use	3.6		S26361-F5675-E480	S26361-F5675-L480
960GB	2.5" (SFF)	SATA 6Gb/s	Mixed Use	3		S26361-F5588-E960	S26361-F5588-L960
1.92TB	2.5" (SFF)	SATA 6Gb/s	Mixed Use	3		S26361-F5588-E192	S26361-F5588-L192

max. 4x/8x - depending on base unit & configuration

**SSD SATA 2.5" Mixed Use S4600 (SFF) Enterprise with hot plug/hot replace tray**

Capacity	Formfactor	Interface	Endurance	DWPD		order code E-part	order code L-part
240GB	2.5" (SFF)	SATA 6Gb/s	Mixed Use	3.1	as soon as available	S26361-F5694-E240	S26361-F5694-L240
480GB	2.5" (SFF)	SATA 6Gb/s	Mixed Use	3.3	as soon as available	S26361-F5694-E480	S26361-F5694-L480
960GB	2.5" (SFF)	SATA 6Gb/s	Mixed Use	3.0	as soon as available	S26361-F5694-E960	S26361-F5694-L960
1.92TB	2.5" (SFF)	SATA 6Gb/s	Mixed Use	3.0	as soon as available	S26361-F5694-E192	S26361-F5694-L192

max. 4x/8x - depending on base unit & configuration

**SSD SATA 2.5" Read Intensive (SFF) Enterprise with hot plug/hot replace tray**

Capacity	Formfactor	Interface	Endurance	DWPD		order code E-part	order code L-part
240GB	2.5" (SFF)	SATA 6Gb/s	Read Intensive	1		S26361-F5632-E240	S26361-F5632-L240
480GB	2.5" (SFF)	SATA 6Gb/s	Read Intensive	1		S26361-F5632-E480	S26361-F5632-L480
800GB	2.5" (SFF)	SATA 6Gb/s	Read Intensive	1		S26361-F5632-E800	S26361-F5632-L800
960GB	2.5" (SFF)	SATA 6Gb/s	Read Intensive	1		S26361-F5632-E960	S26361-F5632-L960
1.2TB	2.5" (SFF)	SATA 6Gb/s	Read Intensive	1		S26361-F5632-E120	S26361-F5632-L120
1.6TB	2.5" (SFF)	SATA 6Gb/s	Read Intensive	1		S26361-F5632-E160	S26361-F5632-L160

max. 4x/8x - depending on base unit & configuration

**SSD SATA 2.5" Read Intensive (SFF) Enterprise with hot plug/hot replace tray**

Capacity	Formfactor	Interface	Endurance	DWPD		order code E-part	order code L-part
240GB	2.5" (SFF)	SATA 6Gb/s	Read Intensive	1.4	as soon as available	S26361-F5701-E240	S26361-F5701-L240
480GB	2.5" (SFF)	SATA 6Gb/s	Read Intensive	0.9	as soon as available	S26361-F5701-E480	S26361-F5701-L480
960GB	2.5" (SFF)	SATA 6Gb/s	Read Intensive	0.9	as soon as available	S26361-F5701-E960	S26361-F5701-L960
1.92TB	2.5" (SFF)	SATA 6Gb/s	Read Intensive	0.9	as soon as available	S26361-F5701-E192	S26361-F5701-L192
3.84TB	2.5" (SFF)	SATA 6Gb/s	Read Intensive	1.0	as soon as available	S26361-F5701-E384	S26361-F5701-L384
7.68TB	2.5" (SFF)	SATA 6Gb/s	Read Intensive	0.5	as soon as available	S26361-F5701-E768	S26361-F5701-L768

max. 4x/8x - depending on base unit & configuration

**2.5" (SFF) Hard drives**

**HDD SAS 2.5" 15K (SFF) Enterprise Mission Critical with hot plug/hot replace tray**

Capacity	RPM	Interface	Sector		order code E-part	order code L-part
300GB	15 000	SAS 12Gb/s	512n		S26361-F5531-E530	S26361-F5531-L530
450GB	15 000	SAS 12Gb/s	512n		S26361-F5531-E545	S26361-F5531-L545
600GB	15 000	SAS 12Gb/s	512n		S26361-F5531-E560	S26361-F5531-L560
900GB	15 000	SAS 12Gb/s	512n		S26361-F5531-E590	S26361-F5531-L590

max. 4x/8x - depending on base unit & configuration

L1

L1

HDD SAS 2.5" 10K 512n (SFF) Enterprise Mission Critical with hot plug/hot replace tray						
Capacity	RPM	Interface	Sector		order code E-part	order code L-part
300GB	10 000	SAS 12Gb/s	512n		S26361-F5550-E130	S26361-F5550-L130
600GB	10 000	SAS 12Gb/s	512n		S26361-F5550-E160	S26361-F5550-L160
900GB	10 000	SAS 12Gb/s	512n		S26361-F5550-E190	S26361-F5550-L190
1.2TB	10 000	SAS 12Gb/s	512n		S26361-F5550-E112	S26361-F5550-L112
300GB	10 000	SAS 12Gb/s	512n	SED	S26361-F5581-E130	S26361-F5581-L130
600GB	10 000	SAS 12Gb/s	512n	SED	S26361-F5581-E160	S26361-F5581-L160
1.2TB	10 000	SAS 12Gb/s	512n	SED	S26361-F5581-E112	S26361-F5581-L112

max. 4x/8x - depending on base unit & configuration

HDD SAS 2.5" 10K 512e (SFF) Enterprise Mission Critical with hot plug/hot replace tray						
Capacity	RPM	Interface	Sector		order code E-part	order code L-part
600GB	10 000	SAS 12Gb/s	512e		S26361-F5543-E160	S26361-F5543-L160
900GB	10 000	SAS 12Gb/s	512e		S26361-F5543-E190	S26361-F5543-L190
1.2TB	10 000	SAS 12Gb/s	512e		S26361-F5543-E112	S26361-F5543-L112
1.8TB	10 000	SAS 12Gb/s	512e		S26361-F5543-E118	S26361-F5543-L118
2.4TB	10 000	SAS 12Gb/s	512e	as soon as available	S26361-F5543-E124	S26361-F5543-L124
1.8TB	10 000	SAS 12Gb/s	512e	SED	S26361-F5582-E118	S26361-F5582-L118
2.4TB	10 000	SAS 12Gb/s	512e	SED as soon as available	S26361-F5582-E124	S26361-F5582-L124

max. 4x/8x - depending on base unit & configuration

HDD SAS 2.5" 7.2K 512e (SFF) Enterprise Business Critical with hot plug/hot replace tray						
Capacity	RPM	Interface	Sector		order code E-part	order code L-part
1TB	7 200	SAS 12Gb/s	512e		S26361-F5573-E100	S26361-F5573-L100
2TB	7 200	SAS 12Gb/s	512e		S26361-F5573-E200	S26361-F5573-L200

max. 4x/8x - depending on base unit & configuration

HDD SATA 2.5" 7.2K 512n (SFF) Enterprise Business Critical with hot plug/hot replace tray						
Capacity	RPM	Interface	Sector		order code E-part	order code L-part
1TB	7 200	SATA 6Gb/s	512n		S26361-F3956-E100	S26361-F3956-L100
2TB	7 200	SATA 6Gb/s	512n		S26361-F3956-E200	S26361-F3956-L200

max. 4x/8x - depending on base unit & configuration

HDD SATA 2.5" 7.2K 512e (SFF) Enterprise Business Critical with hot plug/hot replace tray						
Capacity	RPM	Interface	Sector		order code E-part	order code L-part
1TB	7 200	SATA 6Gb/s	512e		S26361-F3907-E100	S26361-F3907-L100
2TB	7 200	SATA 6Gb/s	512e		S26361-F3907-E200	S26361-F3907-L200

max. 4x/8x - depending on base unit & configuration

3.5" NON hot plug Drives for internal bays

HDD SATA 3.5" 7.2K 512n (LFF) Enterprise Business Critical with NON hot plug/hot replace tray						
Capacity	RPM	Interface	Sector		order code E-part	order code L-part
1TB	7 200	SATA 6Gb/s	512n		S26361-F5637-E100	S26361-F5637-L100
2TB	7 200	SATA 6Gb/s	512n		S26361-F5637-E200	S26361-F5637-L200
4TB	7 200	SATA 6Gb/s	512n		S26361-F5637-E400	S26361-F5637-L400

max. 2x - depending on base unit & configuration

HDD SATA 3.5" 7.2K 512e (LFF) Enterprise Business Critical with NON hot plug/hot replace tray						
Capacity	RPM	Interface	Sector		order code E-part	order code L-part
6TB	7 200	SATA 6Gb/s	512e		S26361-F5639-E600	S26361-F5639-L600
8TB	7 200	SATA 6Gb/s	512e		S26361-F3905-E800	S26361-F3905-L800
10TB	7 200	SATA 6Gb/s	512e		S26361-F3905-E100	S26361-F3905-L100
12TB	7 200	SATA 6Gb/s	512e	as soon as available	S26361-F3905-E120	S26361-F3905-L120

max.2x - depending on base unit & configuration

HDD SATA 3.5" 7.2K (LFF) ECO with NON hot plug/hot replace tray						
Capacity	RPM	Interface	Sector		order code E-part	order code L-part
500GB	7 200	SATA 6Gb/s	512e		S26361-F5641-E500	S26361-F5641-L500
1TB	7 200	SATA 6Gb/s	512e		S26361-F3952-E100	S26361-F3952-L100

max. 2x - depending on base unit & configuration

L2



L2

SATA DOM

**SATA DOM Non volatile storage drive for booting, non hot-plug**

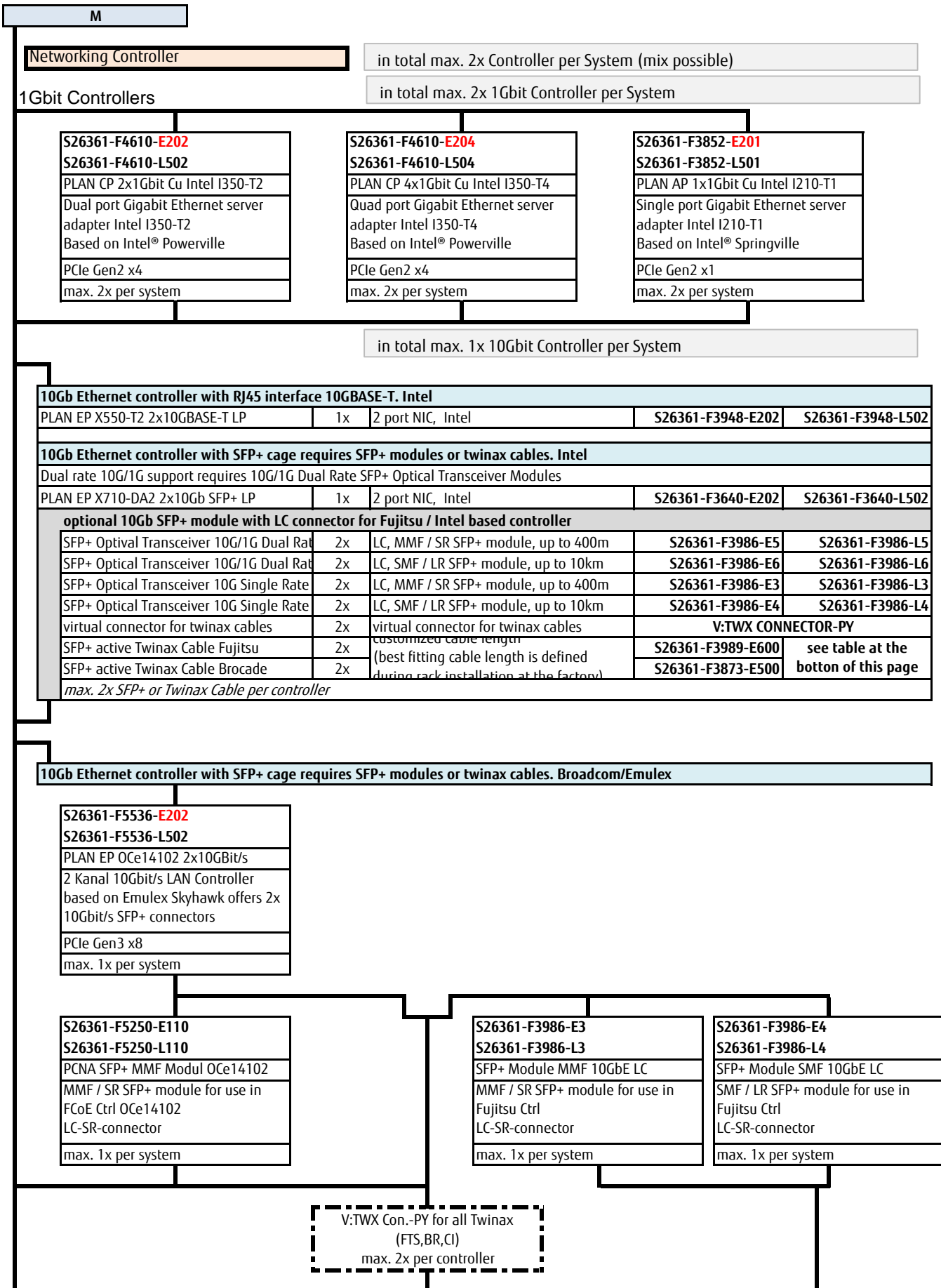
Capacity	Formfactor	Interface	DWPD	Category		order code E-part	order code L-part
64GB	DOM	SATA 6Gb/s	0.14	Boot	vertical	<b>S26361-F5618-E64</b>	<b>S26361-F5618-L64</b>
128GB	DOM	SATA 6Gb/s	0.13	Boot	vertical	<b>S26361-F5618-E128</b>	<b>S26361-F5618-L128</b>

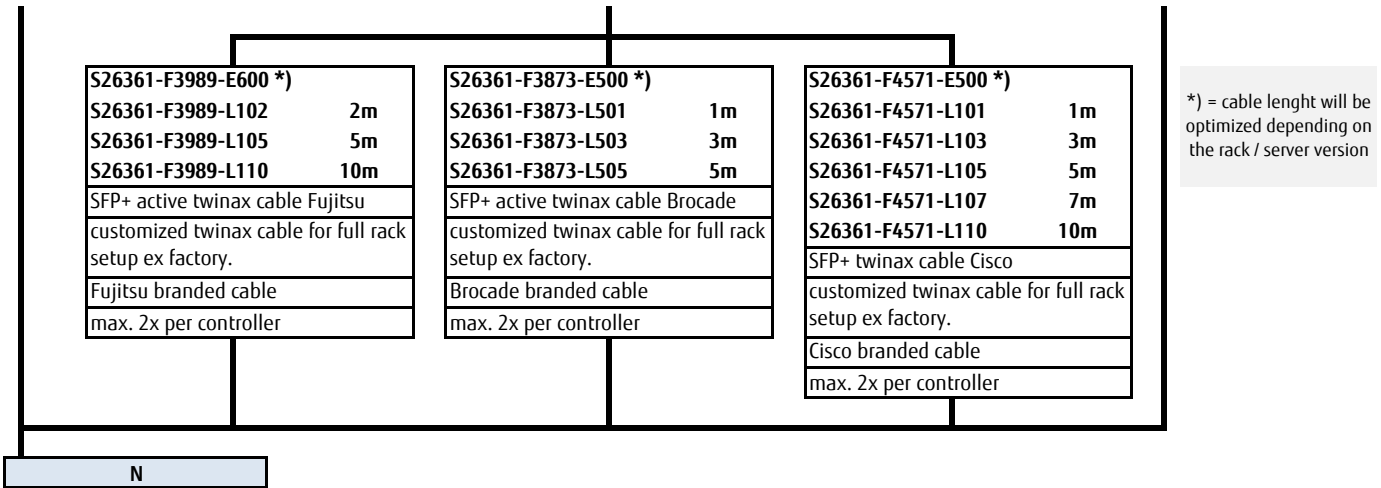
SATA DOM is designed for use as a boot drive with the Endurance Spec. above. VMware is not supported.

max. 1x per Server; internal connector located on Motherboard (please see folder "base").

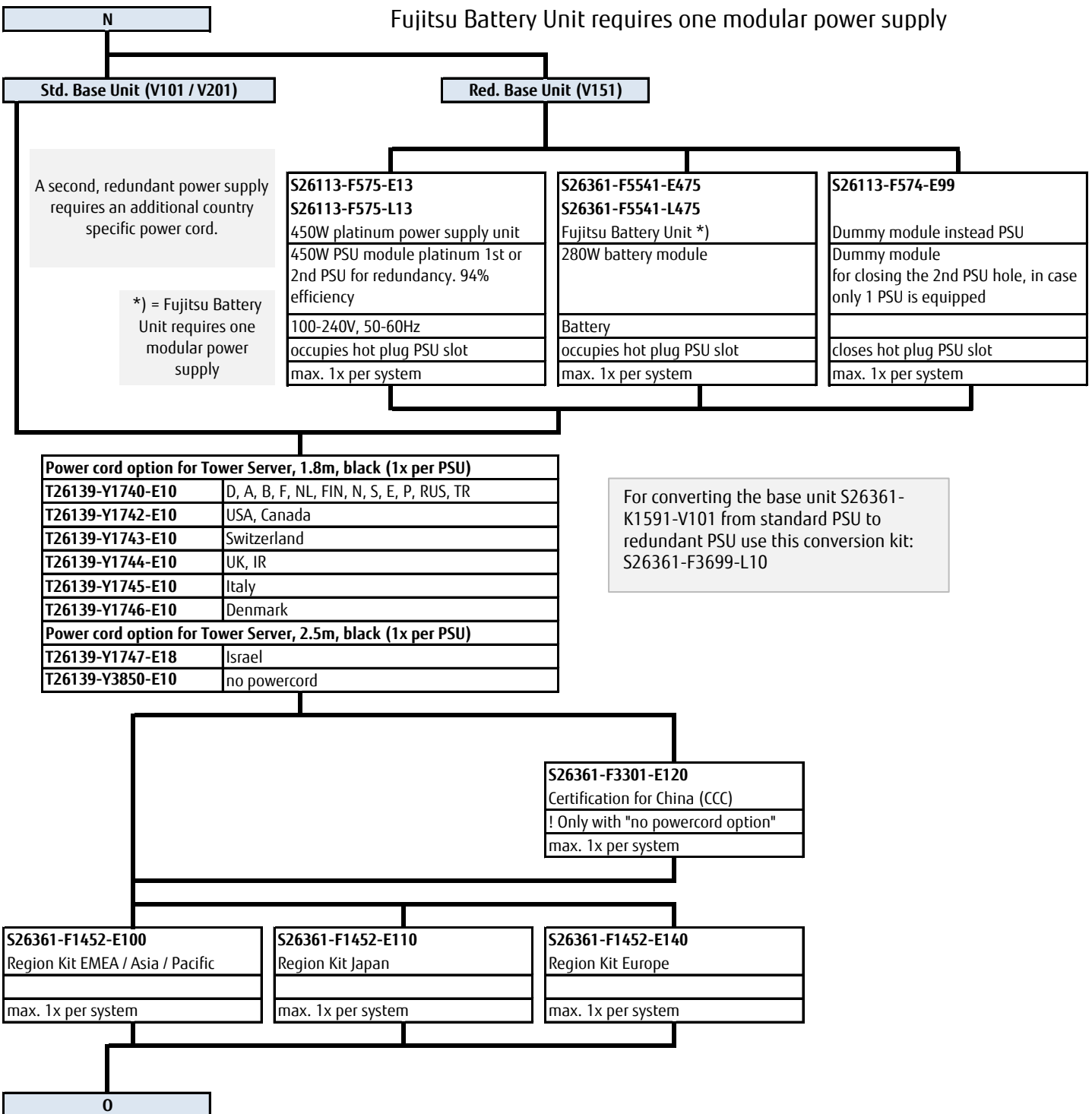
M

**Chapter 11 - LAN Components**





**Chapter 14 - Power supply unit, power cable, country specific options**



**Chapter 15 - Accessories**

0

<http://www.fujitsu.com/fts/products/computing/peripheral/accessories/index-facts.html>

**USB Mouse:**

Mouse M520 Black	S26381-K467-E100	S26381-K467-L100
Mouse M520 Grey	S26381-K467-E101	S26381-K467-L101
Mouse M530 Black	n/a	S26381-K468-L100
Mouse M530 Grey	n/a	S26381-K468-L101



**USB sticks (FOR PROJECTS ONLY) - no standard release**

ADATA USB 3.0 Flash Stick UE700 – 32GB		S26391-F6048-L332
ADATA USB 3.0 Flash Stick UE700 – 64GB		S26391-F6048-L364



**USB Keyboards for Tower Servers for following countries:**

USB professional Keyboard KBPC PX ECO	Country version	FUJITSU Keyboard KB521 USB (grey)
	US/ int 105 keys (UK keyboard + US int. Layout)	S26381-K521-E102
S26381-K341-E104	Czech/Slovak	S26381-K521-E104
S26381-K341-E110	US 104 keys (US keyboard + US layout)	S26381-K521-E110
S26381-K341-E120	Germany	S26381-K521-E120
S26381-K341-E122	Germany / Int	S26381-K521-E122
S26381-K341-E140	France	S26381-K521-E140
S26381-K341-E154	Sweden / Finland	S26381-K521-E154
S26381-K341-E165	United Kingdom	S26381-K521-E165
S26381-K341-E170	Switzerland	S26381-K521-E170
S26381-K341-E180	Spain	S26381-K521-E180
S26381-K341-E185	Italy	S26381-K521-E185



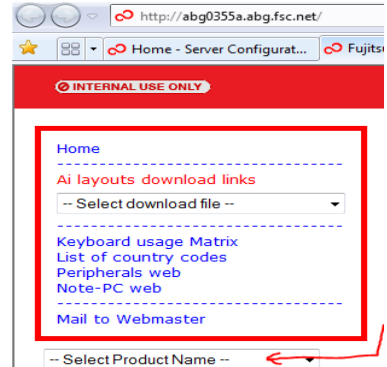
**USB Optical Disc Drive**

External Ultra Slim Portable DVD Writer (Hitachi-LG)	S26341-F103-L142
--	------------------



Please find the layout of all Fujitsu keyboards here:  
<http://abg0355a.abg.fsc.net/>

P



"Desktop"

**Chapter 16 - others**

P

<b>S26361-F1790-E243</b>
<b>S26361-F1790-L244</b>
iRMC S4 advanced pack
integrated remote Management controller activation key for graphical console redirection and remote media redirection
max. 1x per system

Executing system updates, controlling the hardware setup or running diagnostic tests on components are frequent tasks of IT administrators to ensure a continuous 24x7 server operation. ServerView embedded Lifecycle Management (eLCM) for Fujitsu PRIMERGY servers greatly supports such routine tasks by consolidating and enhancing management functions directly available ("embedded") within the server.

<b>S26361-F1790-E310</b>
<b>embedded Lifecycle Management (eLCM)</b>
Server Online Update
OS driver Update
Hardware firmware update
Server Offline Update
Hardware update via Update Manager Express
PrimeCollect
Autonomous creation of Primecollect archives
Creation and use of PrimeCollect archives over AIS connect
Custom Image (Jukebox function)
Automatic and manual download of CD and DVD Images
Automatic and manual start of CD and DVD Images
max. 1x per system

Loose delivery
eLCM Activation Pack (Node Locked License)
<b>BDL:ELCM-PACK</b>
<b>options contains:</b>
- 16GB SD card
- Paper with TAN for Licensekey

<b>S26361-F3776-E101</b>
Cool-safe <sup>®</sup> Advanced Thermal design
enables the PRIMERGY Server to cope with temperatures from 5-40° in operating mode due to extended Fan settings
this setting can be activated ex factory only
max. 1x per system

The ATD feature cannot operate with LTO drives. They will be excluded from configurations with ATD

TPM 2.0 Module supported with Windows Server 2012 and successor. Currently not confirmed for SLES12 SP2 / RHEL 7.2 / ESXi 2016 / XenServer 7.

<b>S26361-F3552-E6</b>
<b>S26361-F3552-L6</b>
TPM Module
TPM module
max. 1x per system

<b>S26361-F3552-E10</b>
<b>S26361-F3552-L10</b>
TPM 2.0 Module
TPM 2.0 module
max. 1x per system

*You would like to add some customer specific solutions?*

--> Please contact our made4you team (mailto:customer.projects@ts.fujitsu.com) for more customer specific solutions. E.g. Lifecycle Management, Customer specific Logos, component or BIOS fixes, ....

--> CUZ fragen, was sie hier gerne reinschreiben würden

Fujitsu Portfolio  
Build on industry standards, Fujitsu offers a full portfolio of IT hardware and software products, services, solutions and cloud offering, ranging from clients to datacenter solutions and includes the broad stack of Business Solutions, as well as the full stack of Cloud offering. This allows customers to leverage from alternative sourcing and delivery models to increase their business agility and to improve their IT operation's reliability

Your Server is ready

Date of change	Folder / order code / description	Name	What has been changed / comment
07.11.2018	HD_SSD / exclusion for 8/10TB HDDs and PRAID E	Yuichi Sugiyama	removed
08.10.2018	replace S26361-F4042-E125 with 155	Johannes Linne	use longer cable for FBU for PRAID EP5xxi
18.09.2018	GFX	Takayuki Sasaki	Modify Graphic Card - Options in "GFX" tab. - add "DP- DVI/D" adapter
11.07.2018	GFX	Takayuki Sasaki	add NVIDIA Quadro P400 support.
02.03.2018	HD_SSD / S26361-F5701-*		added
18.01.2018	HD_SSD / exclusion for 8/10TB HDDs and PRAID E		added
15.01.2018	HD_SSD / exclusion for 8/10TB HDDs and PSAS CP		removed
15.01.2018	HD_SSD / F5694-*/ F5543/F5582-E124 / F3905-E		added
15.01.2018	HD_SSD / F5588-E240/E480		removed
30.11.2017	CPU / S26361-F4029-E105	Meszaros	Xeon E3-1205v6 removed
23.11.2017	CPU / S26361-F4029-E105	A. Spörl	Xeon E3-1205v6 added
25.10.2017	RAID	A. Spörl	note in Z55S1 changed
05.09.2017	HD_SSD / Note for 2.5" 7.2K/15K HDD		removed
24.07.2017	HD_SSD / F5675-*/ F5531-E590		added
12.07.2017	RAID		info-text added
13.06.2017	RAID		descriptions of FBU options changed
06.06.2017	HD_SSD / Note		updated
27.04.2017	USB Devices		New ext. ODD added
25.04.2017			India Cert. Removed (was typo)
29.03.2017	S26361-F5243-E4/L4		comment added
28.03.2017	PRAID EP540i, 580i		CacheCade deleted
28.03.2017	S26361-F3909-E615/L615		corrected from dual rank to single rank
27.03.2017	HD_SSD / S26361-F5618-*/ F5583-*		Endurance updated / removed
15.03.2017			Limitation for 1x SATA DOM added
10.02.2017	S26361-F5243-E2 / E4 instead E12, E14		with small heatsink
07.02.2017	HD_SSD / SED / S26361-F5632-L240		note for SED updated / order code corrected
03.02.2017	new RAID folder: PRAID EP5xxi, EP420 for SED		added
02.02.2017	PLAN EP X550-T2		added
02.02.2017	PLAN EP X710-DA2		added
02.02.2017	S26361-F1790-E310		embedded Lifecycle Management (eLCM) added
31.01.2017	USB devices		updated
18.01.2017	others		TPM order code for upgrade component was wrong
13.01.2017	RDX		updated to new layout.
06.01.2017	HD_SSD / S26361-F5592-*/ F5588-E120/L120		removed
26.12.2016	HD_SSD / SED		added
14.12.2016	HD_SSD / S26361-F3905/5637/5639/5641-*		added
14.12.2016	T26139-Y1747-E18		added power cord for Israel
02.12.2016	HD_SSD / S26361-F5632-*		added
01.12.2016	S26361-F4029-E103/E104/E107		added
17.11.2016			added order codes for CPUs
11.11.2016	ODD		Order Codes for 9,5mm ODD corrected
28.10.2016	S26341-F103-L140		Ext. ODD option update
28.10.2016	HD_SSD		updated
27.10.2016	S26361-F3629-E202/S26361-F3629-L502		old LAN deleted
21.10.2016	S26361-F3752		old X540 LAN deleted
11.10.2016			CPU power corrected
11.10.2016	S26361-F5535-E3/L3		added order code for HDD upgrade
11.10.2016	S26361-F3699-L10		added conversion kit std. to red. PSU
29.09.2016	S26361-F3909-E/L614/615/616		added order codes
13.09.2016	CPU, RAM		CPU & Memory portfolio update
02.08.2016	PLAN i350		S26361-F4610-E202
08.04.2016	First Draft		