

# Fujitsu Storage

## ETERNUS LT20 S2/LT40 S2/LT60 S2 Tape Library

# Read Me First

Fujitsu would like to thank you for purchasing our Fujitsu Storage ETERNUS LT20 S2/LT40 S2/LT60 S2 Tape Library (hereinafter referred to as "LT20 S2/LT40 S2/LT60 S2").

Read this document and check the shipment package to confirm that no items are missing. Refer to the LT20 S2/LT40 S2/LT60 S2 manuals that are listed in this document as necessary.

### CAUTION



Read and understand the "Safety Precautions" before use.



"Safety Precautions"

The information in this document is subject to change without notice for improvement and functionality expansion of the LT20 S2/LT40 S2/LT60 S2.

The latest information about the LT20 S2/LT40 S2/LT60 S2 is available at the following website:

<http://www.fujitsu.com/global/products/computing/storage/tape/eternus-lt/lt20/>

## Table of Contents

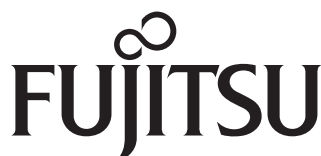
### Content

LT20 S2/LT40 S2/LT60 S2 Manuals .....	2
Package Contents .....	3
Notes Regarding the Handling of Tape Cartridges .....	7
Related Constitutions.....	9



The company names and product names mentioned in this document are either registered trademarks or trademarks of their respective companies.

Copyright 2023 Fujitsu Limited



\* P 3 A M - 9 4 5 2 - 0 7 E N \*

## LT20 S2/LT40 S2/LT60 S2 Manuals

The manuals are available at the following website:

<https://www.fujitsu.com/global/support/products/computing/storage/manuals-list.html>

Manual Title	Manual Code	Description
Fujitsu Storage ETERNUS LT20 S2 LTO Library Installing, Starting Up and Maintaining	P3AM-5382	Describes the operations that must be performed by the user in order to use each tape library.
Fujitsu Storage ETERNUS LT40 S2/LT60 S2 LTO Library Installing, Starting Up and Maintaining	P3AM-5392	
ETERNUS LT20 S2/LT40 S2/LT60 S2 User's Guide -Monitoring Software Setup Procedure-	P3AM-5262	Describes how to configure SNMP for this library, how to configure "ETERNUS SF Storage Cruiser", and how to confirm SNMP trap sending with the LT20 S2/LT40 S2/LT60 S2.
Fujitsu Storage ETERNUS LT20 S2/LT40 S2/LT60 S2 Tape Library User's Guide -Server Connection-	P3AM-5322	Describes the conditions, procedures, and operation methods for installing the LT20 S2/LT40 S2/LT60 S2 in the system.
Fujitsu Storage ETERNUS LT20 S2/LT40 S2/LT60 S2 Tape Library Read Me First	P3AM-9452	Describes how the manuals are organized, package contents, and the terms of use for the LT20 S2/LT40 S2/LT60 S2. A manual booklet is also provided.
Fujitsu Storage ETERNUS LT20 S2/LT40 S2/LT60 S2 Tape Library Safety Precautions	P3AM-9462	Describes the safety precautions that must be taken for the LT20 S2/LT40 S2/LT60 S2. A manual booklet is also provided.

# Package Contents

Check the contents in the package contents list to make sure that none of the contents for the purchased product are missing.

Put a check mark in the checkbox for each item confirmed.

If there is a missing item, contact your sales representative.

- Store the package contents in a safe and secure location, as they may be needed again when making changes to the system or reinstalling the software.
- Note that the package may sometimes also contain an Errata sheet and/or other such unlisted documentation.

## ETERNUS LT20 S2 Library, 8 slot, 0 drive (Product ID: LT20S2KNXU)

## ETERNUS LT40 S2 Library, 24 slot, 0 drive (Product ID: LT40S2KNXU)

## ETERNUS LT60 S2 Library, 48 slot, 0 drive (Product ID: LT60S2KNXU)

Tape library (x 1)

- LT20 S2



- LT40 S2



- LT60 S2



Rack rail kit (x 1 set)

Rack rail (x 1 set)

- For the LT20 S2



- For the LT40 S2/LT60 S2



Screw (silver) (x 8)



Screw (black) (x 8)



Screw to secure the tape library (x2)

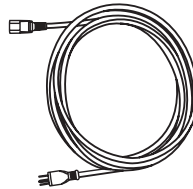
- For the LT20 S2



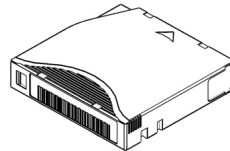
- For the LT40 S2/LT60 S2



AC power cable (x 1)



Cleaning cartridge (x 1)



Cover eject bar (x 1)

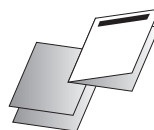


Repeat tie (x 1)



Read Me First (this document) (x 1)

Safety Precautions (x 1)



---

### Additional magazine, 4 slots (left) for LT20 S2 (Product ID: LT20S2Z01)

- 4-cartridge magazine (left) (x 1)

This option is only available for the LT20 S2.



---

### Additional magazine, 4 slots (right) for LT20 S2 (Product ID: LT20S2Z02)

- 4-cartridge magazine (right) (x 1)

This option is only available for the LT20 S2.

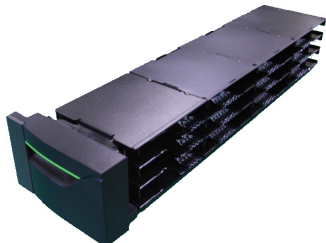


---

### Additional magazine, 12 slots (left) for LT40 S2/LT60 S2 (Product ID: LTS2Z01)

- 12-cartridge magazine (left) (x 1)

This option is only available for the LT40 S2 and the LT60 S2.

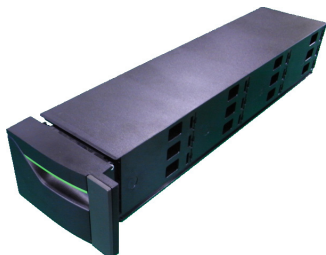


---

### Additional magazine, 12 slots (right) for LT40 S2/LT60 S2 (Product ID: LTS2Z02)

- 12-cartridge magazine (right) (x 1)

This option is only available for the LT40 S2 and the LT60 S2.



---

## Additional power supply for LT60 S2 (Product ID: LT60S2Z06E)

- Redundant power supply unit (x 1)

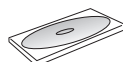
This option is only available for the LT60 S2.



---

## LTFS option for LT20 S2/LT40 S2/LT60 S2 (Product ID: LTS2Z31)

- CD (x 1)



---

## Tape drive LTO-6(IBM) Fibre Channel Half Height for LT20 S2/LT40 S2/LT60 S2 (Product ID: LTS2Z246E)

Tape drive LTO-6(IBM) SAS Half Height for LT20 S2/LT40 S2/LT60 S2 (Product ID: LTS2Z256E)

Tape drive LTO-7(IBM) Fibre Channel Half Height for LT20 S2/LT40 S2/LT60 S2 (Product ID: LTS2Z247E)

Tape drive LTO-7(IBM) SAS Half Height for LT20 S2/LT40 S2/LT60 S2 (Product ID: LTS2Z257E)

Tape drive LTO-8(IBM) Fibre Channel Half Height for LT20 S2/LT40 S2/LT60 S2 (Product ID: LTS2Z248E)

Tape drive LTO-8(IBM) SAS Half Height for LT20 S2/LT40 S2/LT60 S2 (Product ID: LTS2Z258E)

Tape drive LTO-9(IBM) Fibre Channel Half Height for LT20 S2 (Product ID: LTS2Z249E)

Tape drive LTO-9(IBM) SAS Half Height for LT20 S2 (Product ID: LTS2Z259E)

- Drive module (x 1)

This option is only available for the LT20 S2, the LT40 S2, and the LT60 S2. The module overview varies depending on the selected option.

● For FC connections

● For SAS connections



---

**SAS cable 1x SFF 8088-1x SFF 8088 4m (Product ID: LTCBM114)**

**SAS cable 1x SFF 8088-2x SFF 8088 4m (Product ID: LTCBM124)**

miniSAS cable (x 1)

---

**1x1 miniSAS HD Cable 3m (Product ID : LTCBH113)**

miniSAS HD cable (x 1)

---

**1x1 miniSAS HD Cable 3.5m (Product ID : LTCBHH1135)**

miniSAS HD cable (x 1)

# Notes Regarding the Handling of Tape Cartridges

## Notes on Affixing Tape Cartridge Labels

Tape cartridge labels that get loose or get into the drive may cause failures such as a backup operation suspension.

To ensure stable system operation, cartridge labels must be handled with care.

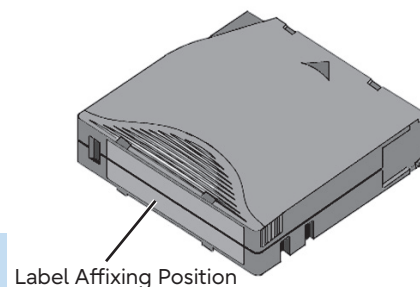
- Beware of loose labels

If the label on the tape cartridge gets loose, the label may cause a failure by sticking to the robot mechanisms of the tape library or to the tape drive.

Note the following points when affixing the labels.

- Make sure to use the blank labels provided with the tape cartridge or barcode labels that are recommended by Fujitsu.
- Keep the surface clean and free of fingerprints or dirt.
- Attach the label firmly on the specified location so that the label is affixed smoothly without any wrinkles.
- Do not affix a new label over the old one. Make sure to peel off the old label and clean the surface before affixing the new label.

**Important** Be careful since the corners of the labels are prone to getting loose.



- Beware of the label sheet getting into the tape drive

The blank label sheet may be on top or below the tape cartridge.

The label sheet may cling to the tape cartridge due to static.

If the tape cartridge is inserted into the library device in this condition, a failure may occur.

When using a new tape cartridge, make sure that the label sheet is not clinging to the tape cartridge.

**Important** Note that you may miss the label sheet if it is enclosed below the tape cartridge.

- Operation using barcode labels

The tape library differentiates the management information of multiple tape cartridges by the barcode label volume number and is a device that is suitable for management.

Because operations without barcode labels may cause a malfunction, operations using barcode labels is recommended.

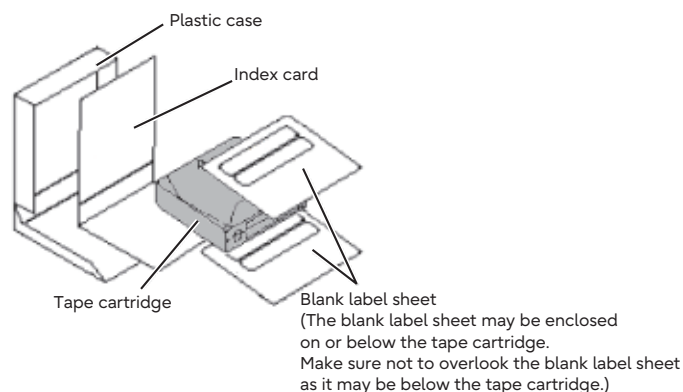
- About LTO9 tape cartridges

To use an unused LTO Ultrium 9 data cartridge for the first time, affix a barcode label to the LTO Ultrium 9 data cartridge. Initialize the LTO Ultrium 9 data cartridge in a tape library that is equipped with an LTO Ultrium 9 tape drive before using it for operations. Initialization of LTO Ultrium 9 tape cartridges takes up to two hours for one cartridge.

If a backup is performed to LTO Ultrium 9 data cartridges that have not been initialized, the LTO Ultrium 9 tape drive will perform an initialization of the LTO Ultrium 9 data cartridge, so the backup time will increase significantly.

In addition, if an LTO Ultrium 9 data cartridge that does not have a barcode label is loaded in a tape library that does not support LTO Ultrium 9 data cartridges, unexpected errors may occur or, depending on the tape library settings, unnecessary trap notifications may occur.

When initializing LTO Ultrium 9 data cartridges, refer to "Initializing LTO9 Tape Cartridges" in "Installing, Starting Up and Maintaining".



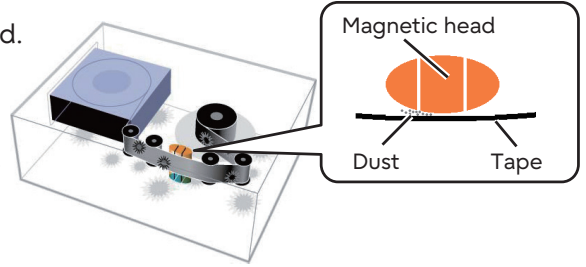
## Cleaning the Tape Drives

To maintain stable system operation, the tape drive must be cleaned. Perform regular cleanings.

Sticky debris generated from magnetic tapes and dust entering the device may become attached to the magnetic head of the tape drive causing errors and failures.

To maintain stable system operation, dust and debris must be cleaned on a regular basis.

In addition, cleaning cartridges can only be used a limited number of times. If the maximum number is reached, replace the cleaning cartridge.



(Reference) Tape Storage Technical Committee

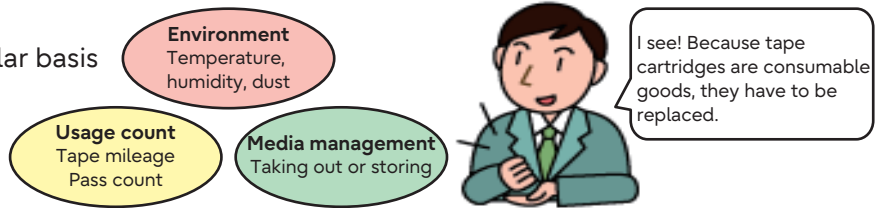
The following table shows a guideline for the cleaning cycle and the number of cleanings that can be performed.

Standard cleaning cycle	Number of times the cleaning cartridge can be used
Whichever of the following occurs first <ul style="list-style-type: none"> <li>• Every three months</li> <li>• Every 1,000 mounts</li> <li>• When a device cleaning is requested</li> </ul>	Approximately 50 times

## Managing the service life of tape cartridges

Tape cartridges are consumable goods.

Tape cartridges must be replaced on a regular basis to maintain stable backup operation.



The lifespan of a tape cartridge varies depending on the usage environment, the number of times used, and the operation of the media, and it cannot be defined clearly. However, as the usage increases, the surface of the tape cartridge becomes damaged and the head becomes dirty causing an increase in read and write errors.

Therefore, replacing the tape cartridges on a regular basis as described in the terms below is recommended.

**Important** The following condition is assumed that the tape cartridges are used correctly in the proper environment.

Replacement guideline for tape cartridges	Tape cartridge storage environment
If a tape cartridge is used in backup operations for one year or 1000 times, whichever comes first.	Temperature: 16 to 32 °C Humidity: 20 to 80% RH Other: keep the tape cartridges free of moisture and condensation by placing them in the specialized cases, do not leave them in direct sunlight or in dusty environments, and do not put them near power cables, motors, or power supplies.



# Related Constitutions

## ● Applicable Environment

The LT20 S2/LT40 S2/LT60 S2 was designed and manufactured for general office use, with user safety in mind. When using the LT20 S2/LT40 S2/LT60 S2, follow the handling instructions, and the placement and cautionary notes listed in the manuals. If used beyond the limits described, the users may be at risk of personal injury and/or material damage.

## ● Using the Manuals

The manuals for the LT20 S2/LT40 S2/LT60 S2 contain important information regarding safe usage.

Please read the manuals carefully before using the LT20 S2/LT40 S2/LT60 S2. Pay special attention to "Fujitsu Storage ETERNUS LT20 S2/LT40 S2/LT60 S2 Tape Library Safety Precautions", and understand the contents thoroughly before connecting.

Keep the manuals in a safe place for future reference.

Fujitsu pays careful attention to the safe use of its products to prevent user injury and/or material damage. To use the LT20 S2/LT40 S2/LT60 S2 properly, please follow the instructions in the manuals.

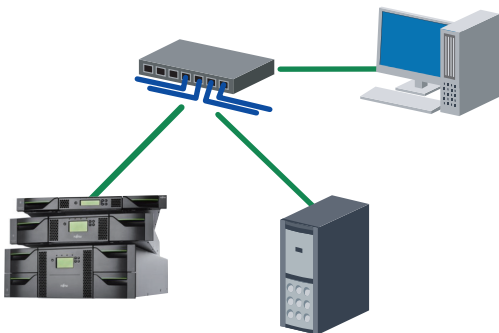
## ● Maintenance

Do not attempt to repair the LT20 S2/LT40 S2/LT60 S2 by yourself. Ask Fujitsu to dispatch one of its maintenance engineers or a maintenance engineer authorized by Fujitsu for maintenance work.

Note that our maintenance engineer may connect maintenance equipment (such as PCs) in order to diagnose the LT20 S2/LT40 S2/LT60 S2.

Maintenance engineers use one of the following connection for maintenance.

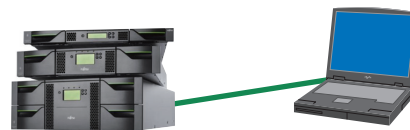
- Connection between an LT20 S2/LT40 S2/LT60 S2 and a customer's PC via a network



- Direct connection between an LT20 S2/LT40 S2/LT60 S2 and a customer's PC



- Direct connection between an LT20 S2/LT40 S2/LT60 S2 and a management PC (FST)



## ● Compliance Standards

Product safety	UL60950-1, CAN/CSA-C22.2 No. 60950-1, EN60950-1, IEC60950-1
Electromagnetic Compatibility	CNS13438 (C6357) Class A, FCC CFR47 part 15 Class A, ICES-003 Class A, EN55022 Class A, VCCI Class A, AS/NZS CISPR22 Class A
Electromagnetic Immunity	EN55024
CE certification	Electromagnetic Compatibility Directive 2014/30/EU Low Voltage Directive 2014/35/EU
Environmental compliance	RoHS-compliant (Restriction of the use certain hazardous substances) 2011/65/EC WEEE-compliant (Waste electrical and electronic equipment)

This Product is designed, developed and manufactured as contemplated for general use, including without limitation, general office use, personal use, household use, and ordinary industrial use, but is not designed, developed and manufactured as contemplated for use accompanying fatal risks or dangers that, unless extremely high safety is secured, could lead directly to death, personal injury, severe physical damage or other loss (hereinafter "High Safety Required Use"), including without limitation, nuclear reaction control in nuclear facility, air craft flight control, air traffic control, mass transport control, medical life support system, missile launch control in weapon system. You shall not use this Product without securing the sufficient safety required for the High Safety Required Use. If you wish to use this Product for High Safety Required Use, please consult with our sales representatives in charge before such use.

The following notice is for EU users only.

**WARNING:** This is a product which meets Class A of EN55022. In a domestic environment this product may cause radio interference in which case the user may be required to take adequate measures.

The following notice is for USA users only.

This equipment has been tested and found to comply with the limits for a Class A digital device, pursuant to Part 15 of the FCC Rules. These limits are designed to provide reasonable protection against harmful interference when the equipment is operated in a commercial environment. This equipment generates, uses, and can radiate radio frequency energy and, if not installed and used in accordance with the instruction manual, may cause harmful interference to radio communications. Operation of this equipment in a residential area is likely to cause harmful interference in which case the user will be required to correct the interference at his own expense.


#### Laser Standard

The Fibre Channel printed circuit board contains a laser system (GBIC or GLM module). Laser systems are classified as Class I Laser Equipment by the radiation standards of the Department of Health and Human Services (DHHS) in accordance with Radiation Control for Health and Safety Act of 1968 and also based on the safety requirements for laser products in EN60825-1 (+All). The certificate of conformance is affixed to the module.

● Simplified Chinese

电子信息产品生产者 (生產者): FUJITSU LIMITED

电子信息产品安全使用期限



这标记是按照2006年2月28日公布的[电子信息产品污染控制管理办法]以及SJ/T 11364-2006[电子信息产品污染控制标识要求]在中国销售的电子信息产品的环保使用期限。如遵守关于这产品的安全或使用上的注意,在这期限内(从生产日期起算)不会因产品中的有害物质漏到外部、或发生突然变异,而引起环境污染和对人体或财产的重大影响。

有毒有害物质元素名称及其含量及部件

部件名称	有害物质					
	铅 (Pb)	汞 (Hg)	镉 (Cd)	六价铬 (Cr (VI))	多溴联苯 (PBB)	多溴二苯醚 (PBDE)
机箱 底盘	○	○	○	○	○	○
印刷线路板	○	○	○	○	○	○
电源	○	○	○	○	○	○
风扇机、电动机	○	○	○	○	○	○
面板	○	○	○	○	○	○
磁带驱动器	×	○	○	○	○	○

本表格依据SJ/T11364 的规定编制

○: 表示该有害物质在该部件所有均质材料中的含量均在GB/T26572 规定的限量要求以下。

×: 表示该有害物质至少在该部件的某一均质材料中的含量超出GB/T26572 规定的限量要求。

● Traditional Chinese

台灣 RoHS

限用物質含有情況標示

單元 Unit	限用物質及其化學符號 Restricted substances and its chemical symbols					
	鉛 Lead (Pb)	汞 Mercury (Hg)	鎘 Cadmium (Cd)	六價鉻 Hexavalent chromium (Cr <sup>+6</sup> )	多溴聯苯 Polybrominated biphenyls (PBB)	多溴二苯醚 Polybrominated diphenyl ethers (PBDE)
外殼	○	○	○	○	○	○
印刷電路板	○	○	○	○	○	○
電源供應器	○	○	○	○	○	○
馬達	○	○	○	○	○	○
面板	○	○	○	○	○	○
磁帶驅動器	—	○	○	○	○	○

備考1. “○” 係指該項限用物質之百分比含量未超出百分比含量基準值。  
Note 1: “○” indicates that the percentage content of the restricted substance does not exceed the percentage of reference value of presence.

備考2. “—” 係指該項限用物質為排除項目。  
Note 2: The “—” indicates that the restricted substance corresponds to the exemption.

警告使用者:

這是甲類的資訊產品,在居住的環境中使用時,可能會造成射頻干擾,在這種情況下,使用者會被要求採取某些適當的對策。

---

Fujitsu Storage  
ETERNUS LT20 S2/LT40 S2/LT60 S2 Tape Library  
Read Me First  
P3AM-9452-07EN  
Date of issuance: December 2023  
Issuance responsibility: Fujitsu Limited

---

- The content of this manual is subject to change without notice.
- This manual was prepared with the utmost attention to detail. However, Fujitsu shall assume no responsibility for any operational problems as the result of errors, omissions, or the use of information in this manual.
- Fujitsu assumes no liability for damages to third party copyrights or other rights arising from the use of any information in this manual.
- The content of this manual may not be reproduced or distributed in part or in its entirety without prior permission from Fujitsu.