



# Industrial identification systems

Solutions for the electrical engineering industry

# About BRADY



**Once you have worked with BRADY, our name will stick with you, (just like our labels) because BRADY is one of the world's leading labelling and identification specialists.**

## Innovative

At BRADY we continue to improve. We have many customers from all industries, and we strive to be ahead of their needs by continuing to invest in research for even more performant solutions. By developing more user-friendly and efficient concepts, we give our thousands of customers the best in the market.

## Strength

At BRADY, we believe our biggest strength is the wide range of identification and safety solutions we can offer our customers, whether it's labelling the smallest component or complete signage for an entire warehouse. We're also proud to offer many products and services - from printers, scanners and software to service contracts and on-site training - that compliment any identification job. And don't forget, our wide network of expert distributors can always offer you a tailor-made solution to meet your specific requirements.

## Trust

For over a hundred years, BRADY has been connected with quality, trust and stability. We demand the best for your products and services, because we know, better than anyone, the importance of good and reliable identification. Identification looks like a small detail, but every professional knows that this kind of detail is crucial to any business.

## Inform

We also have specialised dealers in your region, who can answer all your identification, safety and labelling questions, specific to your activity. They will be happy to provide you with all kinds of options and solutions with no obligation.

Microsoft is a trademark of Microsoft Corporation, Bluetooth is a trademark of Bluetooth Sig, Inc., Android is a trademark of Google Inc.



Brady products are sold on the condition that the purchaser will test them in actual use and determine for himself/herself their suitability to his/her intended purpose. Brady warrants to the purchaser that Brady products are free from defects in material and workmanship but limits its obligation under this warranty to the replacement of the product which has been shown to Brady's satisfaction to have been defective at the time of its purchase.

The warranty does not extend to any persons who have acquired the product from the purchaser. It is in lieu of any other warranty, including every warranty of sale-ability, marketability or suitability for the intended purpose, and is also in lieu of any other obligation or liability on the part of Brady.

Under no circumstances will Brady be liable for losses, damage, costs or subsequent damage of whatever nature which may arise in connection with the use of, or inability to use, Brady's products.

# Industrial identification systems

## Solutions for the electrical engineering industry

### TABLE OF CONTENTS

#### Printing system

BSP41 printer .....	5
Plotter .....	6
Software .....	8

#### Tags

Cable tags .....	9
ACS cable tags .....	9
ICS cable tags .....	10
Terminal block tags .....	11
Component tags .....	12
B+R system tags .....	12
Tags for rails and push-buttons .....	13
Control panel plates .....	14
Adhesive tags .....	14
Adhesive labels for Plotters .....	14
ICS After .....	15
Tag Holder Rail .....	15
Easy Canal .....	16
Plate holder .....	17

#### Identification accessories and carriers

Carriers for HF cables .....	17
Clip-lock carriers .....	17
Carriers for cables .....	18
9 mm carriers .....	19
Clip rail .....	19
Clip-lock carriers .....	19
15 mm carriers .....	19

#### ACS/terminal block tag selection table

Allen Bradley .....	20
Cabur .....	20
Connectwell .....	21
Conta-Clip .....	20
Entrelec/ABB .....	22
Festo .....	20
Murrelektronik .....	21
Phoenix .....	23
Siemens .....	20
Wago .....	26
Weidmuller .....	29
Wieland .....	21
Woertz .....	20

### The Brady Advantage

When it comes to identification, safety and compliance, there's a clear advantage to working with Brady. We put our customers first in everything we do.

Our goal is to give you an unrivalled customer experience. We are relentlessly committed to performance and excellence - in our products, services and people.

Our products and solutions perform in ways that others simply can't match. Our people perform in ways that regularly exceed your expectations. And our focus and discipline work toward solid, long-term performance for our customers.

In short, Brady is the company you trust when performance matters most.

Learn more about the Brady Advantage at:  
[www.bradyeurope.com](http://www.bradyeurope.com)

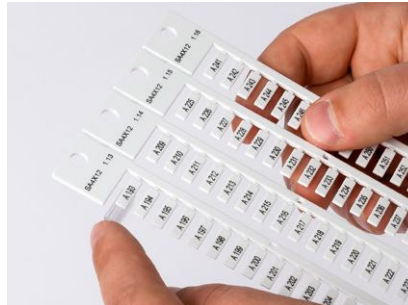




# The total solution

## Applications

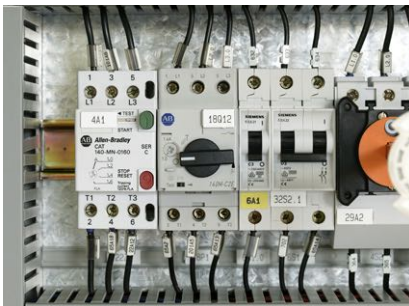
A wide range of consumables in combination with various printing systems cover a range of applications such as identification of cables, push buttons and terminal blocks.



*Cable tags*



*Ademark Carriers - ACS cable tags*



*Component tags*



*Tags for rails and push-buttons*



*ICS cable tags*

## The total solution



*BSP41 printer*



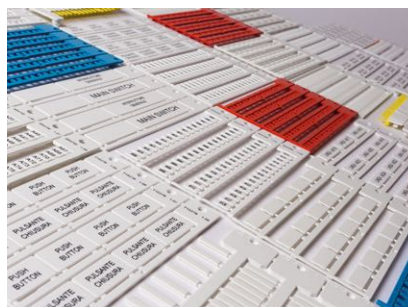
*VP600 plotter*



*VP600 Basic plotter*



*Matrix Software*



*Tags*



*Identification accessories and carriers*

## BSP41 WIRE & PANEL IDENTIFICATION PRINTER

The BSP41 Wire and Panel Identification Printer is an ideal print on-demand solution to create highly visible and durable monocolour rigid identification tags for cables, terminal blocks, push buttons and other electrical components.

Coupled with Matrix software, BSP41's A4 printing surface enables users to quickly and efficiently print tags for various applications. Easily connect the robust, industrial inkjet printer to any PC via USB or Ethernet to solve your identification needs.

### TAG OFFERING

Brady offers a wide range of rigid tags to cover a great number of applications in the electrical industry. If you need a tag to identify an electrical component, the BSP41 Wire and Panel Identification Printer will be able to print it.

Every tag that can be printed with the BSP41 can also be used with Brady's VP600 Plotter enabling you to use your entire tag inventory on both systems.



### APPLICATIONS

- Cables and wires
- Terminal blocks
- Push buttons
- Equipment
- Name plates
- Cable ducts

#### BSP41 printer

Order Reference	Description	Includes	Packaging
196518	BSP41 printer kit	BSP41, 4 x PRIGP4, Matrix, USB cable, Universal Tray, 4 ink cartridges	1

#### Ink

Order Reference	Description	Colour	Packaging
JETECB	Black BSP41 cartridge	Black	1
134498	Yellow/black BSP41 cartridge	Yellow/Black	1
134499	Cyan/black BSP41 cartridge	Cyan/Black	1
134500	Magenta/black BSP41 cartridge	Magenta/Black	1
ECOVAR	BSP41 ink recovery tray		1

#### Accessories

Order Reference	Description	Packaging
139415	3-tree aluminium plate for ICS	1
196709	Aluminium plate for TQ1, TQ2	1
197123	BSP41 Tray	1
PRIGP4	Aluminium 4-tree plate	1
PRIGP5	Aluminium 5-tree plate	1



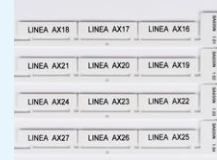
197123 - BSP41 Tray

### THE TOTAL SOLUTION

#### Printing system



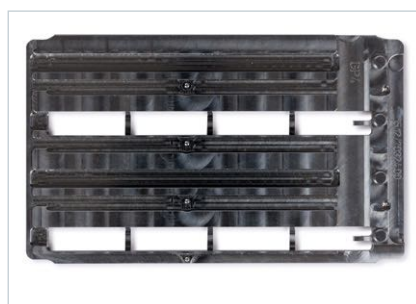
#### Tags



#### Software



196709 - Aluminium plate for TQ1, TQ2  
(control panel plates - page 14)



PRIGP4 - Aluminium 4-tree plate



PRIGP5 - Aluminium 5-tree plate

## PRINTING SYSTEMS

The VP600 and VP600 Basic Plotters are versatile systems for printing inserts and tags for labelling cables, terminal blocks, components and control panel plates. The VP600 and VP600 Basic Plotters feature a robust aluminium structure and can be used to print a vast range of different consumables using a base plate.



See page 20-31 for an ACS tag/terminal block selection table

### VP600 PLOTTER

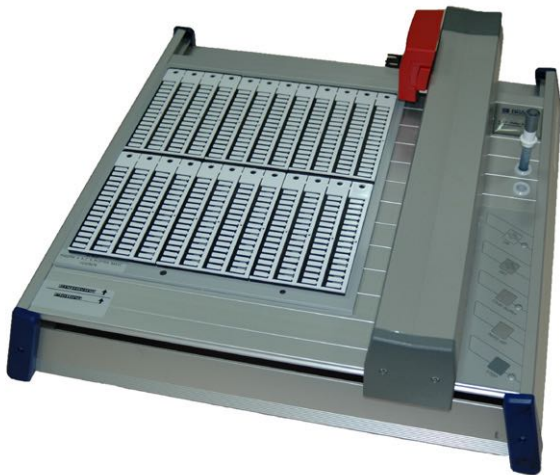
The VP600 is a high productivity and extremely versatile plotter that enables customers to write all rigid markers they need to identify an electrical panel in one single print job. Because the plotter pen holder station is airtight, there is no need to remove the pen and the device is constantly kept in standby.



- High productivity plotter thanks to its 10 plates.
- The airtight pen holder station means that the pen is immediately ready to use.
- The versatile system means it is possible to position and print tags with different formats in one printing session.
- It can be used with the entire range of tags (for cables, terminal blocks, push-buttons, etc.)

### VP600 BASIC PLOTTER

The VP600 Basic is extremely versatile plotter that enables customers to write all rigid markers they need to identify an electrical panel in one single print job. More compact than the larger VP600, the VP600 Basic is easier to carry and is an ideal plotter for non-continuous use.



- Compact and easy-to-transport plotter.
- The versatile system means it is possible to position and print tags with different formats in one printing session.
- The 6 plates and manual pen application are an ideal combination even for occasional use.
- It can be used with the entire range of tags (for cables, terminal blocks, push-buttons, etc.)

## THE TOTAL SOLUTION

### Printing system



### Tags

LINEA AX18	LINEA AX17	LINEA AX16
LINEA AX21	LINEA AX20	LINEA AX19
LINEA AX24	LINEA AX23	LINEA AX22
LINEA AX27	LINEA AX26	LINEA AX25

### Software





## PLOTTER

Order Reference	Description	Includes
SK20EK	VP600 Basic plotter kit	VP600 Basic Plotter, SA20PC, SA20PM, PEN025.A, Matrix, USB cable, feeder
SK40EK	VP600 plotter kit	VP600 Plotter, SAEKPC, SAEKPM, PEN025.A, Matrix, USB cable, feeder

## PVC PLOTTER PLATES

Order Reference	Description	Packaging
SA20IC	6 3-tree plates for ICS VP600 basic plotter type tags	6
SA20PC	6 3-tree plates for VP600 basic plotter	6
SA20PM	6 4-tree plates for VP600 basic plotter	6
SA40BE	1 4-tree plate for SA10X5 BE plotter	1
SAEKIC	10 ICS VP600 plotter type 3-tree plates	10
SAEKPC	10 3-tree plates for VP600 plotter	10
SAEKPM	10 4-tree plates for VP600 plotter	10
SAEKQ	1 plate for plotter panel tags	1



SAEKPC – 10 3-tree plates for VP600 plotter



SAEKPM – 10 4-tree plates for VP600 plotter



SAEKQ – 1 plate for plotter panel tags



See page 20-31 for an ACS tag/terminal block selection table

## PLOTTER ACCESSORIES

Order Reference	Description	Packaging
SK4070	Electrostatic plate	1
RICPEN	Pen refill kit	1
SKBASE.B	Plate for basic plotter	1
CASEA4	Trolley for the VP600 Basic-plotter	1

\* Adhesive labels for Plotters (page 14) can be printed with the VP600 and VP600 Basic Plotters using the SK4070 electrostatic plate.

## ALUMINIUM PLOTTER PLATES

Order Reference	Description	Packaging
PRIGP5	Aluminium 5-tree plate	1
SA40EN	4-tree aluminium plate for terminal blocks ABB/EN	1

PRIGP5 for 5-tree tags and SA40EN for some ABB/Entelec terminal blocks, see the table on page 11.



PRIGP5 – Aluminium 5-tree plate



SA40EN – 4-tree aluminium plate for terminal blocks ABB/EN



### Marking compatible with terminal blocks:

- ABB/Entelec
- Allen-Bradley
- Cabur
- Conta-Clip
- Harting
- Legrand
- Morsetti Italia
- Phoenix Contact
- Siemens
- Sprecher+Schuh
- Schneider Electric/Telemecanique
- Wago
- Weidmüller
- Wieland
- Woertz

## PENS

Pens, ink, solvent and cleaning for VP600 and VP600 Basic plotters

Order Reference	Description	Packaging
047378	Plotter pen gripper	1
PEN025.A	0.25 mm disposable pen	1
PEN035.A	0.35mm disposable pen	1
SA4071	Felt-tip pen for VP600, VP600 basic	1
SA4160	Pen reactivation pump	1
SACART.A	5 SAGN60 ink cartridges	5
SAGN60.A	Black plotter ink	1
SAGN6S.A	SAGN60 ink solvent	1
SAP025	ACS025 refillable pen + cartridge	1
SAP035	ACS035 refillable pen + cartridge	1



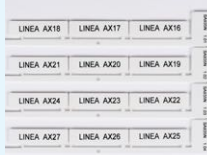
SAP035 – ACS035 refillable pen + cartridge

## THE TOTAL SOLUTION

### Printing system



### Tags



### Software



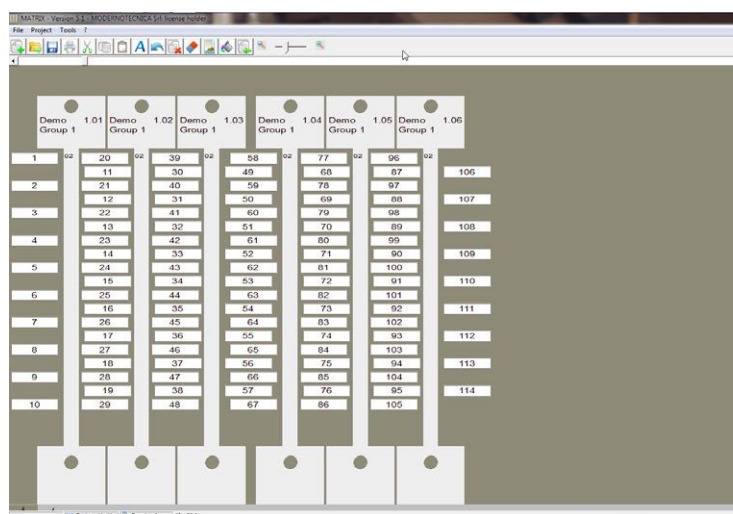
## MATRIX, PROFESSIONAL SOFTWARE

Thanks to its intuitive interface, Brady Matrix software makes labelling tags for cables and components easy and fast. Just a few steps are needed to create sequences and identify each nameplate.

- Different types of tags can be printed as part of a single project.
- The same project can be printed with Brady plotters.
- The interface shows exactly what will be printed.

### SIMPLE AND INTUITIVE INTERFACE

The simple and intuitive interface means that even non-expert users can quickly create all the required labels for use on the control panel interior and exterior.



## COMPATIBLE WITH:



BSP41 printer



VP600 plotter



VP600 Basic plotter

- Compatible with Windows operating systems
- Selected tag properties window
- Electrical engineering symbols library
- Compatible with the most popular CAD programs
- Character management (size, rotation, spacing, bold, italics)
- Text attributes management (alignment, vertical script, writing on multiple lines)
- Character adjustment function: when the text exceeds the size of the tag, this is highlighted in red.
- Image format: BMP, plt
- Online help
- Network use
- Management of multiple peripherals at the same time (VP600/VP600 Basic, BSP41, generic printer)
- Language: Italian/English/French/German/Spanish
- True type font management



## CABLE TAGS

- Rigid inserts for labelling cables, rectangular tag profile
- For use with the Ademark carriers on page 18

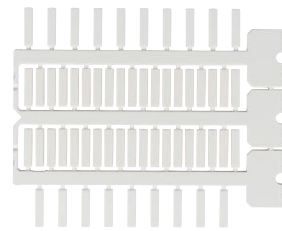


SA4X12 – White 4x12 4-tree tag

Order Reference	Description	Colour	Height (mm)	Width (mm)	Tags/ Card	Cards/ Pack	Tags/ Pack	Trees	Adaptor Plate BSP41	Adaptor Plate VP600	Adaptor Plate VP600BASIC
SA4X10	White 4x10 4-tree tag	White	10.00	4.00	64	32	2048	4	PRIGP4	SAEKPM	SA20PM
4X12GI	Yellow 4x12 4-tree tag	Yellow	12.00	4.00	64	32	2048	4	PRIGP4	SAEKPM	SA20PM
SA4X12	White 4x12 4-tree tag	White	12.00	4.00	64	32	2048	4	PRIGP4	SAEKPM	SA20PM
SA4X15	White 4x15 4-tree tag	White	15.00	4.00	64	32	2048	4	PRIGP4	SAEKPM	SA20PM
SAG415	Yellow 4x15 4-tree tag	Yellow	15.00	4.00	64	32	2048	4	PRIGP4	SAEKPM	SA20PM
4X18BI	White 4x18 3-tree tag	White	18.00	4.00	48	30	1440	3	139415	SAEKIC	SA20IC
4X18GI	Yellow 4x18 3-tree tag	Yellow	18.00	4.00	48	30	1440	3	139415	SAEKIC	SA20IC
4X23BI	White 4x23 3-tree tag	White	23.00	4.00	48	30	1440	3	139415	SAEKPC	SA20PC
4X23GI	Yellow 4x23 3-tree tag	Yellow	23.00	4.00	48	30	1440	3	139415	SAEKPC	SA20PC

## ACS CABLE TAGS

- Rigid inserts for labelling cables, offset tag profile.
- For use with the Ademark carriers on page 18



SA4220 – 4x18 mm 3-tree white ACS tag

Order Reference	Description	Colour	Height (mm)	Width (mm)	Tags/ Card	Cards/ Pack	Tags/ Pack	Trees	Adaptor Plate BSP41	Adaptor Plate VP600	Adaptor Plate VP600BASIC
SAG410	4x10 mm 4-tree yellow ACS tag	Yellow	10.00	4.00	64	32	2048	4	PRIGP4	SAEKPM	SA20PM
SA4230	4x12 mm 3-tree white ACS tag	White	12.00	4.00	57	18	1026	3	PRIGP3	SAEKIC	SA20IC
SAB412	4x12 mm 3-tree blue ACS tag	Blue	12.00	4.00	57	18	1026	3	PRIGP3	SAEKIC	SA20IC
SAG412	4x12 mm 3-tree yellow ACS tag	Yellow	12.00	4.00	57	18	1026	3	PRIGP3	SAEKIC	SA20IC
SAR412	4x12 mm 3-tree red ACS tag	Red	12.00	4.00	57	18	1026	3	PRIGP3	SAEKPC	SA20PC
SAV412	4x12 mm 3-tree green ACS tag	Green	12.00	4.00	57	18	1026	3	PRIGP3	SAEKPC	SA20PC
SA4220	4x18 mm 3-tree white ACS tag	White	18.00	4.00	57	18	1026	3	PRIGP3	SAEKIC	SA20IC
SAB418	4x18 mm 3-tree blue ACS tag	Blue	18.00	4.00	57	18	1026	3	PRIGP3	SAEKIC	SA20IC
SAG418	4x18 mm 3-tree yellow ACS tag	Yellow	18.00	4.00	57	18	1026	3	PRIGP3	SAEKIC	SA20IC
SAR418	4x18 mm 3-tree red ACS tag	Red	18.00	4.00	57	18	1026	3	PRIGP3	SAEKPC	SA20PC
SAV418	4x18 mm 3-tree green ACS tag	Green	18.00	4.00	57	18	1026	3	PRIGP3	SAEKPC	SA20PC
SA4223	4x23 mm 3-tree white ACS tag	White	23.00	4.00	51	20	1020	3	PRIGP3	SAEKIC	SA20IC
SAG423	4x23 mm 3-tree yellow ACS tag	Yellow	23.00	4.00	51	20	1020	3	PRIGP3	SAEKIC	SA20IC
SA4224	4x30 mm 3-tree white ACS tag	White	30.00	4.00	34	30	1020	3	PRIGP3	SAEKIC	SA20IC
SAG424	4x30 mm 3-tree yellow ACS tag	Yellow	30.00	4.00	34	30	1020	3	PRIGP3	SAEKIC	SA20IC



## THE TOTAL SOLUTION





## ICS CABLE TAGS

### ICS WIRE MARKERS

- The ICS wire marker is threaded directly onto the cable without the use of carriers.
- The ICS wire marker is equipped with two rings with flexible tabs which adapt to cables with varying diameters and keep the wire marker aligned with the cable.
- Maximum speed and economy.
- Eliminates carrier assembly times and costs.
- Minimum clearance, maximum flexibility of the labelled cable.

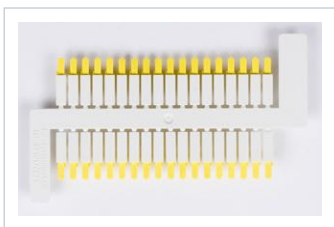
Order Reference	Description	Colour	Height (mm)	Width (mm)	Tags/ Card	Cards/ Pack	Tags/ Pack	Trees	Min. Cable Diameter (mm)	Max. Cable Diameter (mm)	Adaptor Plate BSP41	Adaptor Plate VP600	Adaptor Plate VP600BASIC
IC11B3	ICS tag 4x11 D.1.7/3.2 3-tree white	White	11.00	4.00	48	14	672	3	1.7	3.20	139415	SAEKIC	SA20IC
IC11G3	ICS tag 4x11 D.1.7/3.2 3-tree yellow	Yellow	11.00	4.00	48	14	672	3	1.7	3.20	139415	SAEKIC	SA20IC
IC21B3	ICS tag 4x11 D.2/4.2 3-tree white	White	11.00	4.00	48	11	528	3	2.0	4.20	139415	SAEKIC	SA20IC
IC21G3	ICS tag 4x11 D.2/4.2 3-tree yellow	Yellow	11.00	4.00	48	11	528	3	2.0	4.20	139415	SAEKIC	SA20IC
ICS1B3	ICS tag 4x16 D.1.7/3.2 3-tree white	White	16.00	4.00	48	14	672	3	1.7	3.20	139415	SAEKIC	SA20IC
ICS1G3	ICS tag 4x16 D.1.7/3.2 3-tree yellow	Yellow	16.00	4.00	48	14	672	3	1.7	3.20	139415	SAEKIC	SA20IC
ICS2B3	ICS tag 4x16 D.2/4.2 3-tree white	White	16.00	4.00	48	11	528	3	2.0	4.20	139415	SAEKIC	SA20IC
ICS2G3	ICS tag 4x16 D.2/4.2 3-tree yellow	Yellow	16.00	4.00	48	11	528	3	2.0	4.20	139415	SAEKIC	SA20IC



IC3B10 – ICS Basic S. 0.25-0.75 6x18

### ICS TAGS FOR DIRECTLY LABELLING WIRES (IC3B10, IC4B10, IC5B10)

- White tags to be applied directly to wires
- Material: polycarbonate
- Temperature: from -40°C to +140°C
- Non-deformability: at 1.8 N/mm 135°C
- Flammability: UL94V0 Halogen-free pursuant to standard DIN/VDE 0472, part 815 UV light stabilized
- Only for VP600 and VP600Basic plotters



IC6B14 – ICS-After-Wire, S. 0.5–0.75

### TAGS FOR LABELLING AFTER WIRING (IC6B14, IC7B14, IC8B14)

- High quality, halogen-free labelling tag for labelling wires directly.
- Can be positioned on hard-wired wires without disconnecting.
- Simple and fast assembly with the MWTOOL assembly tool.
- The tags are raised and therefore do not need an adapter plate for plotter printing. (VP600/VP600Basic ONLY)
- Material: polycarbonate
- Temperature: from -40°C to +140°C
- Non-deformability: at 1.8 N/mm 135°C
- Flammability: UL94V0 Halogen-free pursuant to standard DIN/VDE 0472, part 815 UV light stabilized
- Only for VP600 and VP600Basic plotters

Order Reference	Description	Colour	Height (mm)	Width (mm)	Tags/ Card	Cards/ Pack	Tags/ Pack	Min. Cable Diameter (mm)	Max. Cable Diameter (mm)	Adaptor Plate VP600	Adaptor Plate VP600BASIC
IC3B10	ICS Basic S. 0.25-0.75 6x18	White	18.00	6.00	60	25	1500	1.50	2.50	GRPD10	GRPD10
IC4B10	ICS Basic S. 0.75-1.5 6x18	White	18.00	6.00	60	25	1500	2.50	3.00	GRPD10	GRPD10
IC5B10	ICS Basic S. 0.75-1.5 6x26	White	26.00	6.00	60	25	1500	2.50	3.00	GRPD18	GRPD18
IC6B14	ICS-After-Wire, S. 0.5–0.75	White	14.00	5.00	360	1	360	2.10	2.50	GRPDMW	GRPDMW
IC7B14	ICS-After-Wire, S. 1.0–1.5	White	14.00	5.00	360	1	360	2.60	3.00	GRPDMW	GRPDMW
IC8B14	ICS-After-Wire, S. 2.5	White	14.00	5.00	360	1	360	3.00	3.70	GRPDMW	GRPDMW

Order Reference	Description	Tags/ Card	Cards/ Pack	Tags/ Pack
GRPD10	VP600/VP600 basic ICS basic 4X10 plotter plate	8	1	8
GRPD18	VP600/VP600 basic ICS basic 4x18 plotter plate	8	1	8
GRPDMW	VP600/VP600 basic ICS after wire plotter plate	1	1	1
MWTOOL	ICS after wire tool	1	1	1

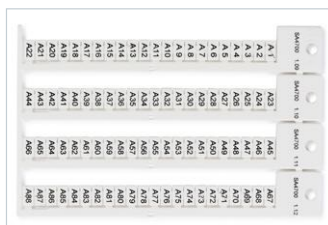


See page 15 for more information about the ICS After system

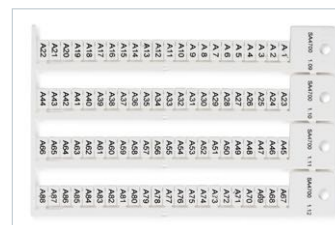
## TERMINAL BLOCK TAGS

- ABB/Entrelec
- Allen Bradley
- Cabur
- Conta Clip
- Harting
- Legrand
- Morsetti Italia
- Phoenix
- Siemens
- Sprecher+Schuh
- Telemecanique
- Wago
- Weidmuller
- Wieland
- Woertz

The upper part of the tree can be used for other indications and to number trees.



SA4700 – Terminal block tag for SS WI TE 5X8.6-5 module



SA4295 – Terminal block tag for WA PH EN HA 5X10

**i** See page 20-31 for an ACS tag/terminal block selection table

Order Reference	Description	Colour	Width (mm)	Tags/ Card	Cards/ Pack	Tags/ Pack	Trees	Adaptor Plate BSP41	Adaptor Plate VP600	Adaptor Plate VP600BASIC
<b>5.00</b>										
SA1248	Terminal block tag for PH ZS 4,2x5-5 module	White	4.20	125	20	2500	5	PRIGP5	PRIGP5	PRIGP5
SA1232	Terminal block tag for PH ZS 5X5-5 module	White	5.00	110	19	2090	5	PRIGP5	PRIGP5	PRIGP5
SA4363	Terminal block tag for WA 5X5-5 module	White	5.00	110	10	1100	5	PRIGP5	SAEKPM	SA20PM
<b>5.40</b>										
SA4813	Terminal block tag for WO AB 5x5.4-5 module	White	5.00	110	13	1430	5	PRIGP5	PRIGP5	PRIGP5
<b>6.00</b>										
SA1228	Terminal block tag for PH ZS 6X5-6 module	White	5.00	90	23	2070	5	PRIGP5	PRIGP5	PRIGP5
<b>7.00</b>										
SA4950	Terminal block tag SI 5X7	White	5.00	68	15	1020	4	PRIGP4	SAEKPM	SA20PM
<b>7.50</b>										
SA1034	Terminal block tag 3.5 x 7.5-3.5 we module	White	3.50	120	10	1200	4	PRIGP4	SAEKPM	SA20PM
SA5465	Terminal block tag for WE 5X7.5-5 module	White	5.00	88	16	1408	4	PRIGP4	SAEKPM	SA20PM
SA6546	Terminal block tag for WE 5x7.5-5 module	Yellow	5.00	88	16	1408	4	PRIGP4	SAEKPM	SA20PM
<b>8.20</b>										
SA1430	Terminal block tag for WI TE 6X8,2-6 module	White	6.00	72	14	1008	4	PRIGP4	SAEKPM	SA20PM
<b>8.60</b>										
SA4700	Terminal block tag for SS WI TE 5X8.6-5 module	White	5.00	88	16	1408	4	PRIGP4	SAEKPM	SA20PM
<b>9.00</b>										
SA4811	Terminal block tag for WO AB 5X9-5 module	White	5.00	88	16	1408	4	PRIGP4	SAEKPM	SA20PM
SA4810	Terminal block tag for WO AB 6X9-6 module	White	6.00	72	14	1008	4	PRIGP4	SAEKPM	SA20PM
<b>10.00</b>										
SA1226	Terminal block tag 4 x 10-4 WA PH EN HA module	White	4.00	100	14	1400	4	PRIGP4	SAEKPM	SA20PM
SA4294	Terminal block tag 4 10 WA PH EN HA	White	4.00	64	16	1024	4	PRIGP4	SAEKPM	SA20PM
CAB510	Terminal block tag CABUR CBD CBC 5X10 white	White	5.00	64	16	1024	4	PRIGP4	SAEKIC	SA20IC
CAG510	Terminal block tag CABUR CBD CBC 5X10 yellow	Yellow	5.00	64	16	1024	4	PRIGP4	SAEKIC	SA20IC
SA1234	Terminal block tag 5 x 10-5 PH.ZS module	White	5.00	88	16	1408	4	PRIGP4	SAEKPM	SA20PM
SA2610	Terminal block tag for EN ABB 5x10-5 module	White	5.00	84	17	1428	4	SA40EN	SA40EN	SA40EN
SA4290	Terminal block tag 5 x 10-5 WA PH EN HA module	White	5.00	88	16	1408	4	PRIGP4	SAEKPM	SA20PM
SA4295	Terminal block tag WA PH EN HA 5X10	White	5.00	64	16	1024	4	PRIGP4	SAEKPM	SA20PM
SA4310	Terminal block tag WI TE 5X10	White	5.00	64	16	1024	4	PRIGP4	SAEKPM	SA20PM
SA4330	Terminal block tag WE CC MI 5X10	White	5.00	64	16	1024	4	PRIGP4	SAEKPM	SA20PM
SA4335	Terminal block tag WE offset clip 5X10	White	5.00	64	16	1024	4	PRIGP4	SAEKPM	SA20PM
SA4361	Terminal block tag 5 x 10-5 WA module	White	5.00	88	16	1408	4	PRIGP4	SAEKPM	SA20PM
SA4960	Terminal block tag SI 5X10	White	5.00	68	15	1020	4	PRIGP4	SAEKPM	SA20PM
SA4961	Terminal block tag for SI 8WA2 5X10-5 module	White	5.00	80	16	1280	4	PRIGP4	SAEKPM	SA20PM
SA5443	Terminal block tag SI WE module	White	5.00	88	16	1408	4	PRIGP4	SAEKPM	SA20PM
SALES1	Terminal block tag SI LE 5X10	White	5.00	64	16	1024	4	PRIGP4	SAEKPM	SA20PM
SA1236	Terminal block tag for PH ZS 6X10-6 module	White	6.00	72	14	1008	4	PRIGP4	SAEKPM	SA20PM
SA2620	Terminal block tag for EN 5000 ADO 6X10-6 module	White	6.00	72	28	2016	4	SA40EN	SA40EN	SA40EN
SA4350	Terminal block tag for WA PH EN HA 6X10	White	6.00	64	16	1024	4	PRIGP4	SAEKPM	SA20PM
SA4370	Terminal block tag WI TE 6X10	White	6.00	64	16	1024	4	PRIGP4	SAEKPM	SA20PM
SA4390	Terminal block tag WE CC 6X10	White	6.00	64	16	1024	4	PRIGP4	SAEKPM	SA20PM
SA4441	Terminal block tag for WE 6X10-6 module	White	6.00	72	14	1008	4	PRIGP4	SAEKPM	SA20PM
SA4460	Terminal block tag for WA PH EN HA 6X10-6 module	White	6.00	72	14	1008	4	PRIGP4	SAEKPM	SA20PM
SA4480	Terminal block tag for SS WI TE 6X10-6 module	White	6.00	72	14	1008	4	PRIGP4	SAEKPM	SA20PM
SA2630	Terminal block tag for EN 5000 ADO 8X10-8 module	White	8.00	56	27	1512	4	SA40EN	SA40EN	SA40EN
<b>11.00</b>										
SA5X11	Terminal block tag LE VIKING3 WI TE SP 5X11	White	5.00	64	14	896	4	PRIGP4	SAEKPM	SA20PM
<b>12.00</b>										
SA2615	Terminal block tag for EN ABB 5x12-5 module	White	5.00	80	25	2000	4	SA40EN	SA40EN	SA40EN
SA4812	Terminal block tag for WO AB 5X12-5 module	White	5.00	88	16	1408	4	PRIGP4	SAEKPM	SA20PM
SA2625	Terminal block tag for EN ABB 6x12-6 module	White	6.00	60	25	1500	4	SA40EN	SA40EN	SA40EN
SA4800	Terminal block tag for MI WO AB 6X12-6 module	White	6.00	72	14	1008	4	PRIGP4	SAEKPM	SA20PM
SA4362	Terminal block tag for WA I O SYS 12X7	White	7.00	36	10	360	4	PRIGP4	SAEKPM	SA20PM
SA4470	Terminal block tag for EN ABB 8x12-8 module	White	8.00	40	25	1000	4	SA40EN	SA40EN	SA40EN
<b>15.00</b>										
SA4300	Terminal block tag for WA PH EN HA 5X15-5 module	White	5.00	88	16	1408	4	PRIGP4	SAEKPM	SA20PM
SA4305	Terminal block tag WA PH EN HA 5X15	White	5.00	64	16	1024	4	PRIGP4	SAEKPM	SA20PM
SA4320	Terminal block tag WI TE 5X15	White	5.00	64	16	1024	4	PRIGP4	SAEKPM	SA20PM
SA4340	Terminal block tag WE CC OFFSET 5X15	White	5.00	64	16	1024	4	PRIGP4	SAEKPM	SA20PM
SA5444	Terminal block tag for WE 5X15-5 module	White	5.00	88	16	1408	4	PRIGP4	SAEKPM	SA20PM
SA4360	Terminal block tag WW PH EN HA 6X15	White	6.00	64	16	1024	4	PRIGP4	SAEKPM	SA20PM
SA4380	Terminal block tag WI TE 6X15	White	6.00	64	16	1024	4	PRIGP4	SAEKPM	SA20PM
SA4440	Terminal block tag WE CC LO SM1/BG 6X15	White	6.00	64	16	1024	4	PRIGP4	SAEKPM	SA20PM



## COMPONENT TAGS

TAGS FOR REMOTE CONTROL SWITCHES – SWITCHES – CONNECTORS:

- Siemens
- Klockner-Moeller
- Telemecanique
- AEG
- Square-D
- Weidmuller-DSTV
- ILME
- Harting
- Wago



Order Reference	Description	Colour	Height (mm)	Width (mm)	Tags/ Card	Cards/ Pack	Tags/ Pack	Trees	Adaptor Plate BSP41	Adaptor Plate VP600	Adaptor Plate VP600BASIC
SA10X5	BE 10X5 component tag	White	10.00	5.00	40	25	1000	4	N/A	SA40BE	SA40BE
SA10X7	SI SIRIUS 10X7 component tag	White	10.00	7.00	48	17	816	4	PRIGP4	SAEKPM	SA20PM
SA10X8	SI ASI 10X8 component tag	White	10.00	8.00	40	20	800	4	PRIGP4	SAEKPM	SA20PM
SA11X4	SI SIRIUS 11X4 component tag	White	11.00	4.00	80	15	1200	4	PRIGP4	SAEKPM	SA20PM
SA1060	LU 9X12 component tag	White	12.00	9.00	20	19	380	4	PRIGP4	SAEKPM	SA20PM
SA4980	WE DSTV DSTV-K module component tag	White	15.00	6.00	64	25	1600	4	PRIGP4	SAEKPM	SA20PM
SA4841	TE LC1 8X17 component tag	White	17.00	8.00	20	17	340	4	PRIGP4	SAEKPM	SA20PM
SA9X17	ABB 9X17 component tag	White	17.00	9.00	24	16	384	4	PRIGP4	SAEKPM	SA20PM
SA4570	AB SS 17X10 component tag	White	17.00	10.00	30	25	750	5	PRIGP5	SAEKPM	SA20PM
SA1070	Component tag KM 8X17.5	White	17.50	8.00	24	30	720	4	PRIGP4	SAEKPM	SA20PM
SA1054	PF 8X18.5 component tag	White	18.50	8.00	20	24	480	4	PRIGP4	SAEKPM	SA20PM
SA20X7	SI SIRIUS 20X7 component tag	White	20.00	7.00	20	17	340	4	PRIGP4	SAEKPM	SA20PM
SA1052	ESHA 8X20 component tag	White	20.00	8.00	20	19	380	4	PRIGP4	SAEKPM	SA20PM
SA4250	AEG SD 8X20 component tag	White	20.00	8.00	20	19	380	4	PRIGP4	SAEKPM	SA20PM
SA1042	FE KM 9X20 component tag	White	20.00	9.00	20	19	380	4	PRIGP4	SAEKPM	SA20PM
SA1062	LU 9X20 component tag	White	20.00	9.00	20	19	380	4	PRIGP4	SAEKPM	SA20PM
SA4260	SI KM OM 9X20 component tag	White	20.00	9.00	20	19	380	4	PRIGP4	SAEKPM	SA20PM
SA4265	SI KM 9X20 component tag	White	20.00	9.00	20	16	320	4	PRIGP4	SAEKPM	SA20PM
SAG426	9X20 yellow component tag	Yellow	20.00	9.00	20	16	320	4	PRIGP4	SAEKPM	SA20PM
SA4840	TE 8X21 component tag	White	21.00	8.00	20	17	340	4	PRIGP4	SAEKPM	SA20PM



## B+R SYSTEM TAGS

- High quality, halogen-free labelling tags to clip onto equipment.
- Can be printed on a plotter using the appropriate PRIGP5 plate.
- Material: polycarbonate
- Polycarbonate (PC): high mechanical resistance and thermal non-deformability, excellent electrical and dielectric properties, precise sizing and minimal water absorption, self-extinguishing.
- Temperature: from -40°C to +140°C
- Non-deformability: at 1.8 N/mm 135°C
- Flammability: UL94V0
- Halogen-free pursuant to standard DIN/VDE 0472, part 815
- UV light stabilized

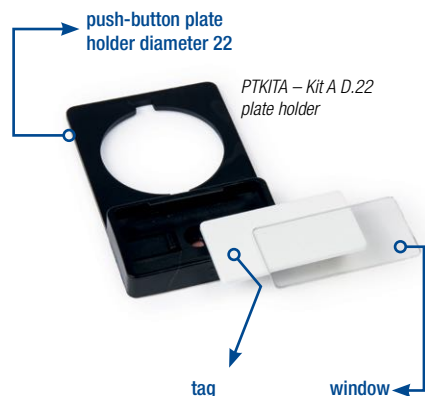
Order Reference	Description	Colour	Height (mm)	Width (mm)	Tags/ Card	Cards/ Pack	Tags/ Pack	Trees	Adaptor Plate BSP41	Adaptor Plate VP600	Adaptor Plate VP600BASIC
BR113B	Light blue b+r 11x3 mm tag	Blue	11.00	3.00	45	15	675	5	PRIGP5	PRIGP5	PRIGP5
BR113R	Red b+r 11x3 mm tag	Red	11.00	3.00	45	15	675	5	PRIGP5	PRIGP5	PRIGP5
BR113W	White b+r 11x3 mm tag	White	11.00	3.00	45	15	675	5	PRIGP5	PRIGP5	PRIGP5

## TAGS FOR RAILS AND PUSH-BUTTONS

Tags for externally marking an electrical control panel with push-buttons, selectors, signal lights, switches, etc.

### KITS

Order Reference	Description	Includes
PTKIT1	Plate installation kit D.22	48 22 diameter push-button plate holders, 48 cards, 48 windows
PTKIT2	17x30 plate installation kit	48 17 x 30 Adhesive Plate Holders, 48 Cards, 48 windows, 100 Screws
PTKIT3	17x52 plate installation kit	48 17 x 52 Adhesive Plate Holders, 48 Cards, 48 windows, 100 Screws
PTKIT4	17x70 plate installation kit	48 17 x 70 Adhesive Plate Holders, 48 Cards, 48 windows, 100 Screws
PTKITA	Kit A D.22 plate holder	48 22 Diameter Push-button Plate Holders, 48 Tags, 48 Transparent Covers
PTKITB	Kit B 17x30 plate holder	48 17 x 30 Adhesive Plate Holders, 48 Tags, 48 windows, 100 Screws
PTKITC	Kit C 17x52 plate holder	48 17 x 52 Adhesive Plate Holders, 48 Tags, 48 windows, 100 Screws
PTKITD	Kit D 17x70 plate holder	48 17 x 70 Adhesive Plate Holders, 48 Tags, 48 windows, 100 Screws



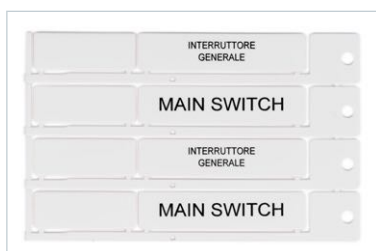
### TAGS

- For push-buttons, switches, cable bundles...
- Can be used with carriers (page 19), plate holders (page 17), rails (page 15).

Order Reference	Description	Colour	Height (mm)	Width (mm)	Tags/Card	Cards/Pack	Tags/Pack	Trees	Adaptor Plate BSP41	Adaptor Plate VP600	Adaptor Plate VP600BASIC
T1517A	15x17 mm silver tag	Silver	17.00	15.00	24	30	720	4	PRIGP4	SA20PM	SAEKPM
T1517B	15x17 mm white tag	White	17.00	15.00	24	30	720	4	PRIGP4	SAEKPM	SA20PM
T0827B	8x27 mm white tag	White	27.00	8.00	16	30	480	4	PRIGP4	SAEKPM	SA20PM
T1527B	15x27 mm white tag	White	27.00	15.00	16	30	480	4	PRIGP4	SAEKPM	SA20PM
T1527G	15x27 mm yellow tag	Yellow	27.00	15.00	16	30	480	4	PRIGP4	SAEKPM	SA20PM
T1549A	15x49 mm silver tag	Silver	49.00	15.00	8	30	240	4	PRIGP4	SAEKPM	SA20PM
T1549B	15x49 mm white tag	White	49.00	15.00	8	30	240	4	PRIGP4	SAEKPM	SA20PM
T1567A	15x67 mm silver tag	Silver	67.00	15.00	4	30	120	4	PRIGP4	SAEKPM	SA20PM
T1567B	15x67 mm white tag	White	67.00	15.00	4	30	120	4	PRIGP4	SAEKPM	SA20PM



T1527B - 15x27 mm white tag



T1567B - 15x67 mm white tag



SA935N - Non adhesive white tag 9x35 for SAT935

TAGS THAT CAN BE USED WITH RAILS AND CARRIERS, CAN ALSO BE SECURED WITH 9 MM HIGH CABLE TIES

To be used with the plate holders on page 17 and the 9 mm carriers on page 19

Order Reference	Description	Colour	Height (mm)	Width (mm)	Tags/ Card	Cards/ Pack	Tags/ Pack	Trees	Adaptor Plate BSP41	Adaptor Plate VP600	Adaptor Plate VP600BASIC
SA920N	Non adhesive white tag 9x20 for SAT920-SA1121	White	9.00	20.00	20	30	600	4	PRIGP4	SAEKPM	SA20PM
SAG92N	Non adhesive yellow tag 9x20	Yellow	9.00	20.00	20	30	600	4	PRIGP4	SAEKPM	SA20PM
SA935N	Non adhesive white tag 9x35 for SAT935	White	9.00	35.00	12	30	360	4	PRIGP4	SAEKPM	SA20PM
SAG93N	Non adhesive yellow tag 9x35	Yellow	9.00	35.00	12	30	360	4	PRIGP4	SAEKPM	SA20PM

### WINDOWS

For use with the plate carriers on page 17

Order Reference	Description	Colour	Height (mm)	Width (mm)	Tags/ Card	Cards/ Pack	Tags/ Pack
T1527V	15x27 window	Transparent	27.00	15.00	16	30	480
T1549V	15x49 window	Transparent	49.00	15.00	8	30	240
T1567V	15x67 window	Transparent	67.00	15.00	4	30	120
T0827V	8x27 window	Transparent	27.00	8.00	16	30	480





TQK2BI – Type 2 white control panel plate kit

## CONTROL PANEL PLATES

Electrical control panel identification combining two components where one can be mounted on top of the other. The transparent top is used as a protective cover which can be fastened using screws or rivets. The opaque borders will make sure the screws or rivets are concealed.

Order Reference	Description	Colour	Height (mm)	Width (mm)	Tags/ Card	Cards/ Pack	Tags/ Pack	Adaptor Plate BSP41	Adaptor Plate VP600	Adaptor Plate VP600BASIC
TQK1BI	Type 1 white control panel plate kit	White	80.00	115.00	1	1	1	196709	SAEKTQ	SAEKTQ
TQ1BIA	Type 1 white control panel plate	White	80.00	115.00	20	1	20	196709	SAEKTQ	SAEKTQ
TQ1TRA	Type 1 control panel plate window	Transparent	80.00	115.00	10	1	10			

\* TQK1BI: Kit 1 with 10 white name plates and 10 clear covers

Order Reference	Description	Colour	Height (mm)	Width (mm)	Tags/ Card	Cards/ Pack	Tags/ Pack	Adaptor Plate BSP41	Adaptor Plate VP600	Adaptor Plate VP600BASIC
TQK2BI	Type 2 white control panel plate kit	White	60.00	100.00	1	1	1	196709	SAEKTQ	SAEKTQ
TQ2BIA	Type 2 white control panel plate	White	60.00	100.00	20	1	20	196709	SAEKTQ	SAEKTQ
TQ2TRA	Type 2 control panel plate window	Transparent	60.00	100.00	10	1	10			

\* TQK2BI: Kit 2 with 10 white name plates and 10 clear covers

## TAGS WITH ADHESIVE BASE

Thanks to the adhesive base these tags can be applied quickly to components and control panels.

Order Reference	Description	Colour	Height (mm)	Width (mm)	Tags/ Card	Cards/ Pack	Tags/ Pack	Trees	Adaptor Plate BSP41	Adaptor Plate VP600	Adaptor Plate VP600BASIC
SA911A	9x11 mm adhesive tag	White	11.00	9.00	44	32	1408	4	PRIGP4	SAEKPM	SA20PM
SA915A	9x15 mm adhesive tag	White	15.00	9.00	44	32	1408	4	PRIGP4	SAEKPM	SA20PM
1517AD	15x17 mm adhesive tag	White	17.00	15.00	24	30	720	4	PRIGP4	SAEKPM	SA20PM
SA920A	9x20 mm adhesive tag	White	20.00	9.00	20	30	600	4	PRIGP4	SAEKPM	SA20PM
SAG92A	9x20 mm yellow adhesive tag	Yellow	20.00	9.00	20	30	600	4	PRIGP4	SAEKPM	SA20PM
1527AD	15x27 mm adhesive tag	White	27.00	15.00	16	30	480	4	PRIGP4	SAEKPM	SA20PM
SA935A	9x35 mm adhesive tag	White	35.00	9.00	12	30	360	4	PRIGP4	SAEKPM	SA20PM
SAG93A	9x35 mm yellow adhesive tag	Yellow	35.00	9.00	12	30	360	4	PRIGP4	SAEKPM	SA20PM
1549AD	15x49 mm adhesive tag	White	49.00	15.00	8	30	240	4	PRIGP4	SAEKPM	SA20PM
1567AD	15x67 mm adhesive tag	White	67.00	15.00	4	30	120	4	PRIGP4	SAEKPM	SA20PM



## ADHESIVE LABELS FOR PLOTTERS

Can be printed on VP600 and VP600Basic Plotters using the SK4070 electrostatic plate (page 7). Single sheet, with and without border.

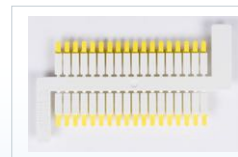
Order Reference	Description	Colour	Height (mm)	Width (mm)	Tags/ Card	Cards/ Pack	Tags/ Pack
E1020C	10x20 mm border label sheets	Black on Yellow	10.00	20.00	100	20	2000
E1025C	10x25 mm border label sheets	Black on Yellow	10.00	25.00	80	20	1600
E1030C	10x30 mm border label sheets	Black on Yellow	10.00	30.00	70	20	1400
E1550C	15x50 mm border label sheets	Black on Yellow	15.00	50.00	28	20	560
E0615L	6x15 mm label sheets	Yellow	6.00	15.00	224	20	4480
E0915L	9x15 mm label sheets	Yellow	9.00	15.00	154	20	3080



## ICS AFTER

### LABELLING SYSTEM AFTER CABLE WIRING

- Tags for high quality halogen-free labelling.
- For marking existing cable bundles, it can be assembled on sleeves or large diameter cables.
- Sealed with cable ties.
- Because of the tag construction there is no need to use an adapter plate for printing on VP600 and VP600 Basic plotters.
- Material: polycarbonate
- Polycarbonate (PC): high mechanical resistance and thermal non-deformability, excellent electrical and dielectric properties, precise sizing and minimal water absorption, self-extinguishing.
- Temperature: from -40°C to +140°C
- Non-deformability: at 1.8 N/mm 135°C
- Flammability: UL94V0 Halogen-free pursuant to standard DIN/VDE 0472, part 815 UV light stabilized



See page 10 for more information about tags for marking after wiring

### ICS-AFTER HOLDER LOCKING BRACKETS FOR LABELLING EQUIPMENT

- The bracket is secured by way of a self-locking spring-loaded foot.
- The locking brackets and the self-locking tag holders are made of polyvinyl chloride (PVC).
- Temperature: up to 60°C
- Flammability: UL94V0

Order Reference	Description	Packaging	Max. Field of Use (mm)	Min. Cable Diameter (mm)	Max. Cable Diameter (mm)
PT1AUT	5.2mm max diameter self-locking tag holder	50	5.20		
PT2AUT	11 mm max diameter self-locking tag holder	50	11.00		
SL2712	Longitudinal white tag	192			
ST2712	Longitudinal/transversal white tag	192			
STAFFA	Locking bracket	192	3.70	0.80	1.78
STAFSL	Bracket + longitudinal tag	192	3.70	0.80	1.78



PT1AUT – 5.2mm max diameter self-locking tag holder

SL2712 / ST2712: No plate needed. Applied directly to the VP600 e VP600 Basic plotters.

## TAG HOLDER RAIL

### RAIL FOR CONTROL PANEL TAGS

- To be used with T1517B – T1527B – T1549B – T1567B tags (page 13).
- Clip tags directly onto the rail.
- Tags are protected by a transparent cover.



Order Reference	Description	Colour	Packaging	Height (mm)	Length (mm)	Adhesive
GDTACO	Cover for 1000 mm tag rail	Transparent	25	15.00	1000.00	No
GDC043	Cover for GDT43A	Transparent	50	15.00	430.00	No
GDC063	Cover for GDT63A	Transparent	50	15.00	630.00	No
GDC065	Cover for GDT65A	Transparent	50	15.00	650.00	No
GDC081	Cover for GDT81A	Transparent	50	15.00	810.00	No
GDTAAD	Black adhesive rail 1000mm, for 15 mm H tags	Black	25	15.00	1000.00	Yes
GDT43A	Black adhesive rail 430mm, for 15 mm H tags	Black	50	15.00	430.00	Yes
GDT63A	Black adhesive rail 630mm, for 15 mm H tags	Black	50	15.00	630.00	Yes
GDT65A	Black adhesive rail 650mm, for 15 mm H tags	Black	50	15.00	650.00	Yes
GDT81A	Black adhesive rail 810mm, for 15 mm H tags	Black	50	15.00	810.00	Yes
GDTANA	Black non-adhesive rail 1000mm, for 15 mm H tags	Black	25	15.00	1000.00	No

## EASY CANAL

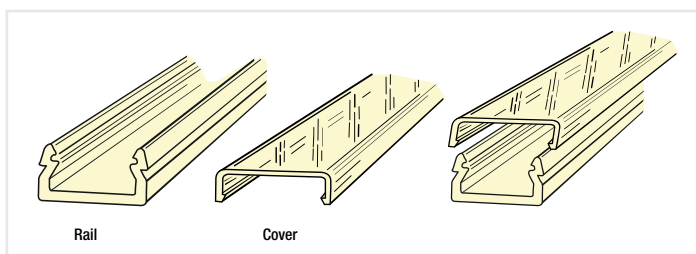
LABELLING SYSTEM FOR "C BARS AND CABLE DUCTS.



The easy canal labelling system can be used for a large variety of applications. Its variable length allows you to customise the identification based on your specific needs. It is designed to provide you with the opportunity to add as much information as possible inside the electrical control panel. The tags can be mounted very easily onto the labelling support.

- Material: soft PVC made of polyvinyl chloride, softeners and additives. It is resistant to corrosive saline solutions and most acids.
- Temperature: up to 60°C
- Flammability: UL94V0

Order Reference	Description	Colour	Packaging	Width (mm)	Length (mm)	Adhesive
GD9500	9x500 mm black rail	Black	25	9.00	500.00	No
GD9600	9x600 mm black rail	Black	25	9.00	600.00	No
GD9100	9x1000 mm black rail	Black	25	9.00	1000.00	No
GD9130	9x1300 mm black rail	Black	25	9.00	1300.00	No
GD1550	15x500 mm black rail	Black	25	15.00	500.00	No
GD1560	15x600 mm black rail	Black	25	15.00	600.00	No
GD1510	15x1000 mm black rail	Black	25	15.00	1000.00	No
GD1513	15x1300 mm black rail	Black	25	15.00	1300.00	No
C09500	9x500 mm transparent cover	Transparent	25	9.00	500.00	No
C09600	9x600 mm transparent cover	Transparent	25	9.00	600.00	No
C09100	9x1000 mm transparent cover	Transparent	25	9.00	1000.00	No
C09130	9x1300 mm transparent cover	Transparent	25	9.00	1300.00	No
C01550	15x500 mm transparent cover	Transparent	25	15.00	500.00	No
C01560	15x600 mm transparent cover	Transparent	25	15.00	600.00	No
C01510	15x1000 mm transparent cover	Transparent	25	15.00	1000.00	No
C01513	15x1300 mm transparent cover	Transparent	25	15.00	1300.00	No



### ACCESSORIES

Order Reference	Description	Packaging
GDBASE	Terminal block fixing board	30
GDDISM	Terminal block spacer	100
GDDIST	Terminal block side spacer	100
GDINDT	A T indicator for terminal block	100
GDSUPP	Cable duct support	100
GDTA09	9mm plug	80
GDTA15	15 mm plug	80



See page 20-31 for an ACS tag/terminal block selection table

## PLATE HOLDER

- Assembled on a rail, with double sided tape or concealed screws.
- Put your printed identification tag in the frame and secure it by clipping the transparent cover into place.
- Black

Order Reference	Description	Packaging	Height (mm)	Width (mm)	Hole Diameter (mm)
<b>Non adhesive version</b>					
PT0827	D.22 non-adhesive push-button plate holder for T0827B	250	40.00	30.00	22.00
PTAR22	D.22 push-button plate holder for T1527B	250	48.00	30.00	22.00
<b>Adhesive version</b>					
PTAR2A	D.22 adhesive push-button plate holder for T1527B	250	48.00	30.00	22.00
PTAR24	D.24 adhesive push-button plate holder for T1527B	250	48.00	30.00	24.00
PT827T	D.22 TE adhesive push-button plate holder for T0827B	250	40.00	30.00	22.00
PT827T.A	D.22 TE adhesive push-button plate holder for T0827B	250	40.00	30.00	22.00



Order Reference	Description	Packaging	Height (mm)	Width (mm)
<b>Non adhesive version</b>				
P1752N	17x52 non adhesive plate holder for T1549B	250	17.00	52.00
P1770N	17x70 non adhesive plate holder for T1567B	250	17.00	70.00
P1730N	17x30 non adhesive plate holder for T1527B	250	17.00	30.00
VITITA	Self-tapping screws for PTBIAN rail	100		
<b>Adhesive version</b>				
PTBIAN	Adhesive rail for 1000 mm bi PTxxxx, P1xxxx tags	25	1000.00	17.00
P1752A	17x52 adhesive plate holder for T1549B	250	17.00	52.00
P1770A	17x70 adhesive plate holder for T1567B	250	17.00	70.00
P1730A	17x30 adhesive plate holder for T1527B	250	17.00	30.00
SAT920	9X20 adhesive plate holder for SA920N	1000	9.00	20.00
SAT935	9X35 adhesive plate holder for SA935N	500	9.00	35.00

**i** See page 13 for more information about tags and windows.

## CARRIERS FOR HF CABLES

To be used with Halogen Free ACS tags for cables

Order Reference	Description	Packaging	Length (mm)	Min. Cable Diameter (mm)	Max. Cable Diameter (mm)
ES0012	Mod. 0 L12 halogen-free Ademark Carriers	2000	12.00	1.30	2.00
ES0018	Mod. 0 L18 halogen-free Ademark Carriers	2000	18.00	1.30	2.00
ES0023	Mod. 0 L23 halogen-free Ademark Carriers	2000	23.00	1.30	2.00
ES0030	Mod. 0 L30 halogen-free Ademark Carriers	1000	30.00	1.30	2.00
ES0112	Mod. 1 L12 Halogen-free Ademark Carriers	2000	12.00	1.80	2.50
ES0118	Mod. 1 L18 Halogen-free Ademark Carriers	2000	18.00	1.80	2.50
ES0123	Mod. 1 L23 Halogen-free Ademark Carriers	2000	23.00	1.80	2.50
ES0130	Mod. 1 L30 Halogen-free Ademark Carriers	1500	30.00	1.80	2.50
ES0212	Mod. 2 L12 Halogen-free Ademark Carriers	2000	12.00	2.50	4.00
ES0218	Mod. 2 L18 Halogen-free Ademark Carriers	2000	18.00	2.50	4.00
ES0223	Mod. 2 L23 Halogen-free Ademark Carriers	1000	23.00	2.50	4.00
ES0230	Mod. 2 L30 Halogen-free Ademark Carriers	1000	30.00	2.50	4.00
ES0312	Mod. 3 L12 Halogen-free Ademark Carriers	1000	12.00	4.00	6.50
ES0318	Mod. 3 L18 Halogen-free Ademark Carriers	1000	18.00	4.00	6.50
ES0323	Mod. 3 L23 Halogen-free Ademark Carriers	1000	23.00	4.00	6.50
ES0330	Mod. 3 L30 Halogen-free Ademark Carriers	1000	30.00	4.00	6.50
ES0412	Mod. 4 L12 Halogen-free Ademark Carriers	1000	12.00	6.00	10.00
ES0418	Mod. 4 L18 Halogen-free Ademark Carriers	1000	18.00	6.00	10.00
ES0423	Mod. 4 L23 Halogen-free Ademark Carriers	500	23.00	6.00	10.00
ES0430	Mod. 4 L30 Halogen-free Ademark Carriers	500	30.00	6.00	10.00



## CLIP-LOCK CARRIERS

This is an ideal solution for marking already harnessed cables, can be used with 4X23BI, 4X23GI, SA4223 cable tags (page 9)

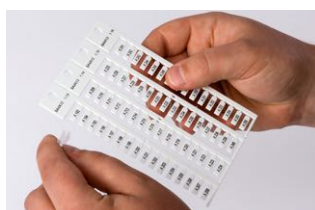
Order Reference	Description	Packaging	Length (mm)	Min. Cable Diameter (mm)	Max. Cable Diameter (mm)
CLIP01	Mod. 1x23 clip-lock carriers	1000	23.00	1.70	3.00
CLIP02	Mod. 2x23 clip-lock carriers	1000	23.00	2.50	3.50
CLIP03	Mod. 3x23 clip-lock carriers	1000	23.00	3.30	4.80
CLIP04	Mod. 4x23 clip-lock carriers	1000	23.00	4.20	5.60
CLIP05	Mod. 5x23 clip-lock carriers	1000	23.00	5.00	7.00



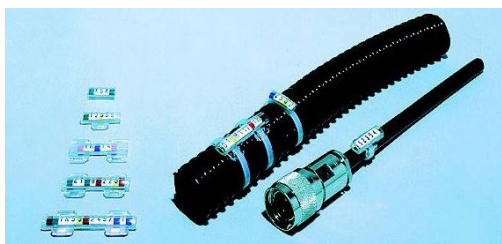


## CARRIERS FOR CABLES

- To be used with ACS tags for cables (page 9)



Order Reference	Description	Packaging	Min. Cable Diameter (mm)	Max. Cable Diameter (mm)
<b>Length: 10.00 mm</b>				
SA0010	Model 0 10 mm long Ademark Carriers	2000	1.30	2.00
SA0110	Model 1 10 mm long Ademark Carriers	2000	1.80	2.50
SA0210	Model 2 10 mm long Ademark Carriers	2000	2.50	4.00
SA0310	Model 3 10 mm long Ademark Carriers	1000	4.00	6.50
SA0410	Model 4 10 mm long Ademark Carriers	1000	6.00	10.00
SA0510	Model 5 10 mm long Ademark Carriers	1000	9.00	15.00
SA0610	Model 6 10 mm long Ademark Carriers	500	15.00	24.00
<b>Length: 12.00 mm</b>				
SA0012	Model 0 12 mm long Ademark Carriers	2000	1.30	2.00
SA0112	Model 1 12 mm long Ademark Carriers	2000	1.80	2.50
SA0212	Model 2 12 mm long Ademark Carriers	2000	2.50	4.00
SA0312	Model 3 12 mm long Ademark Carriers	1000	4.00	6.50
SA0412	Model 4 12 mm long Ademark Carriers	1000	6.00	10.00
SA0512	Model 5 12 mm long Ademark Carriers	1000	9.00	15.00
SA0612	Model 6 12 mm long Ademark Carriers	500	15.00	24.00
<b>Length: 16.00 mm</b>				
SA0016	Model 0 16 mm long Ademark Carriers	2000	1.30	2.00
SA0116	Model 1 16 mm long Ademark Carriers	2000	1.80	2.50
SA0216	Model 2 16 mm long Ademark Carriers	2000	2.50	4.00
SA0316	Model 3 16 mm long Ademark Carriers	1000	4.00	6.50
SA0416	Model 4 16 mm long Ademark Carriers	1000	6.00	10.00
SA0516	Model 5 16 mm long Ademark Carriers	750	9.00	15.00
SA0616	Model 6 16 mm long Ademark Carriers	500	15.00	24.00
<b>Length: 18.00 mm</b>				
SA0018	Model 0 18 mm long Ademark Carriers	2000	1.30	2.00
SA0118	Model 1 18 mm long Ademark Carriers	2000	1.80	2.50
SA0218	Model 2 18 mm long Ademark Carriers	2000	2.50	4.00
SA0318	Model 3 18 mm long Ademark Carriers	1000	4.00	6.50
SA0418	Model 4 18 mm long Ademark Carriers	1000	6.00	10.00
SA0518	Model 5 18 mm long Ademark Carriers	750	9.00	15.00
SA0618	Model 6 18 mm long Ademark Carriers	500	15.00	24.00
<b>Length: 23.00 mm</b>				
SA0023	Model 0 23 mm long Ademark Carriers	2000	1.30	2.00
SA0123	Model 1 23 mm long Ademark Carriers	2000	1.80	2.50
SA0223	Model 2 23 mm long Ademark Carriers	2000	2.50	4.00
SA0323	Model 3 23 mm long Ademark Carriers	1000	4.00	6.50
SA0423	Model 4 23 mm long Ademark Carriers	1000	6.00	10.00
SA0523	Model 5 23 mm long Ademark Carriers	500	9.00	15.00
SA0623	Model 6 23 mm long Ademark Carriers	500	15.00	24.00
<b>Length: 30.00 mm</b>				
SA0030	Model 0 30 mm long Ademark Carriers	1000	1.30	2.00
SA0130	Model 1 30 mm long Ademark Carriers	1000	1.80	2.50
SA0230	Model 2 30 mm long Ademark Carriers	1000	2.50	4.00
SA0330	Model 3 30 mm long Ademark Carriers	1000	4.00	6.50
SA0430	Model 4 30 mm long Ademark Carriers	500	6.00	10.00
SA0530	Model 5 30 mm long Ademark Carriers	500	9.00	15.00
SA0630	Model 6 30 mm long Ademark Carriers	200	15.00	24.00
<b>Length: 2 m</b>				
SA01TU	Mod. 1 L. 2000 mm Ademark Carriers	16	1.80	2.50
SA02TU	Mod. 2 L. 2000 mm Ademark Carriers	16	2.50	4.00
SA03TU	Mod. 3 L. 2000 mm Ademark Carriers	16	4.00	6.50
<b>Length: 25 m</b>				
SA05MT	Model 5 25 m long continuous Ademark Carriers	1	9.00	15.00
SA06MT	Model 6 25 m long continuous Ademark Carriers	1	15.00	24.00
<b>Length: 50 m</b>				
SA00MT	Model 0 50 m long continuous Ademark Carriers	1	1.30	2.00
SA01MT	Model 1 50m long continuous Ademark Carriers	1	1.80	2.50
SA02MT	Model 2 50 m long continuous Ademark Carriers	1	2.50	4.00
SA03MT	Model 3 50m long continuous Ademark Carriers	1	4.00	6.50
SA04MT	Model 4 50 m long continuous Ademark Carriers	1	6.00	10.00



Applied using cable ties for use on sleeves, pipes, cable bundles.

Order Reference	Description	Packaging	Length (mm)
SA0916	Ademark Carriers mod. 9x16	2000	16.00
SA1018	Mod. 10x18 1-cable tie Ademark Carriers	1000	18.00
SA1023	Mod. 10x23 1 cable tie Ademark Carriers	1000	23.00
SA1028	Mod. 10x28 1-cable tie Ademark Carriers	1000	28.00
SA1032	Mod. 10x32 2-cable tie Ademark Carriers	1000	32.00
SA1036	Mod. 10x36 2-cable tie Ademark Carriers	1000	36.00
SA1047	Mod. 10x47 2-cable tie Ademark Carriers	1000	47.00
SA09MT	Mod. 9 MT Ademark carrier	1	100 m

## 9 MM CARRIERS

Cable carriers (applied directly or using cable ties) for use with 9 mm high and 20 and 35 mm long tags (see page 13)

Order Reference	Description	Packaging	Length (mm)	Min. Cable Diameter (mm)	Max. Cable Diameter (mm)	# of Holes
SA1121	ACS 9x20 mm tag carrier	1000	20.00			2
SA1135	ACS 9x35 mm tag carrier	500	35.00			4
SA2920	Mod. 29 20 mm carrier for 9x20 mm tags	1000	20.00	2.50	3.50	
SA2935	Mod. 29 35 mm carrier for 9x35 mm tags	500	35.00	2.50	3.50	



## CLIP RAIL

PERFORATED RAIL, ADHESIVE RAIL, RAIL COVER

- Rigid grey PVC rail with a perforated or adhesive base.
- Transparent PVC cover.
- Rail size: 6.5 mm high, 11 mm wide



Order Reference	Description	Colour	Packaging	Height (mm)	Length (m)	Adhesive
SABIAD	500mm adhesive clip rail for clip tags/h 9 mm grey	Grey	50	6.50	0.50 m	Yes
SABIFO	500 mm perforated clip rail for clip tags/H 9 mm grey	Grey	50	6.50	0.50 m	No
SABIC5	500 mm rail cover	Transparent	50		0.50 m	No
SABI1A	1000 mm adhesive clip rail for clip tags/h 9 mm grey	Grey	50	6.50	1.00 m	Yes
SABI1F	1000mm perforated clip rail for clip tags/H 9 mm grey	Grey	50	6.50	1.00 m	No
SABIC1	1000 mm rail cover	Transparent	50		1.00 m	No

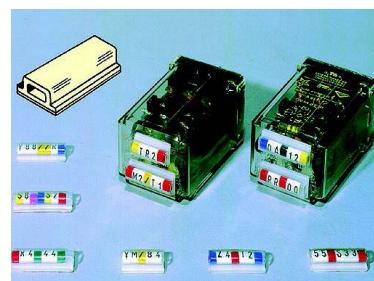
## CLIP-LOCK CARRIERS

CLIP-LOCK CARRIERS

White PVC ademark tags with adhesive can be used for component identification. The marker or tag can be inserted while still offering legibility of the tag due to its transparency.



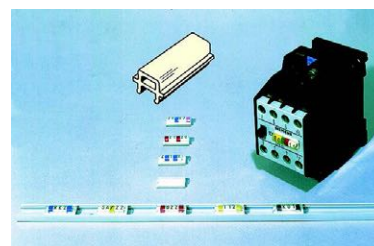
Order Reference	Description	Packaging	Width (mm)	Length (mm)
SATA12	L12 mm adhesive tag	1000	9.00	12.00
SATA16	L16 mm adhesive tag	1000	9.00	16.00
SATA18	L18 mm adhesive tag	1000	9.00	18.00
SATA22	L22 mm adhesive tag	1000	9.00	22.00
SATA25	L25 mm adhesive tag	1000	9.00	25.00



CLIP TAGS

Made of rigid grey PVC with a transparent PVC number holder pocket. The tag clips directly on to Siemens remote control switches and at any point on the rail, allowing functional labelling when there are multiple adjacent components.

Order Reference	Description	Packaging	Width (mm)	Length (mm)
SATC00	9x20 mm clip tag	1000	9.00	20.00



## 15 MM CARRIERS

MODEL 15 CARRIER

Transparent PVC carriers for labelling cable bundles or large cables, etc. Code TU1527 is sealed using one cable tie, the others need two cable ties.

Order Reference	Description	Packaging	Length (mm)	# of Holes
TU1527	Carrier for 15x27 mm tags	500	27.00	2
TU1549	Carrier for 15x49 mm tags	250	49.00	4
TU1567	Carrier for 15x67 mm tags	125	67.00	4



# ACS/terminal block tag selection table

## CABUR

CABUR	CAB510 SINGLE	SA4295 SINGLE	SA1034 PITCH	SA4330 SINGLE
AFO	•			
CBC	•			
CBD	•			
CBD 4	•			
CDA		•		
CVF	•			
DAS	•			
DBC	•			
DSFA	•			
DSS	•			
DSS	•			
EDM		•		
FCP	•			
FFS	•			
FLD		•		
FPC	•			
FPL	•			
FVS	•			
HDM.1				•
HMD-HD400GN		•		
HMM.1			•	
MAC	•			
MPFA	•			
MPS	•			
NCS	•			
SCB	•			
SCX		•		
SFC		•		
SV		•		
TC/DIN		•		
TC/P0	•			
TDE	•			
TE0	•			
TLD	•			
TLE	•			
TLS	•			
VLM		•		

## ALLEN BRADLEY

ALLEN BRADLEY	SA4811 PITCH	SA4812 PITCH	SA4810 PITCH	SA4800 PITCH	SA4330 SINGLE	SA5443 PITCH	SA4335 SINGLE
LCIE 02 ATEX 0039U	•	•					
LCIE 07 ATEX 0010U			•	•			
1492 K2	•	•					
1492 K3			•	•			
1492 L3						•	•
1492 LXXX	•	•					
1492 M 5X12		•					
1492 SM 5X9	•						
1492 SM 6X10							
1492 SM 6X12							
1492 SM 6X9			•		•		
1492-3						•	
1492-L35						•	
1492-L6						•	

## CONTA-CLIP

CONTA CLIP	SA1034 PITCH	SA5465 PITCH	SA4390 SINGLE	SA4441 PITCH	SA4440 SINGLE	SA4330 SINGLE	SA5343 PITCH
PK2.5-4-35							
PK-TS 15/35	•		•		•	•	•
ZRKG		•					
ZSLG		•					
ZSLN			•	•	•		
ZSRK		•	•	•	•		
ZVMAX			•	•	•		

## FESTO

FESTO	SA1042
IBS9X20	•

## WOERTZ

WOERTZ	SA4811 PITCH	SA4810 PITCH	SA4800 PITCH	SA4363 PITCH
2711				•
30150BL	•			
30150E	•			
30150GR	•			
30400				
30401				
30402				
30403				
30404				
30405				
30430		•		
30431		•		
30432		•		
30433		•		
30434		•		
3054 / 4 V				
3054 / 6 V				
3054 / 10 V				
30800			•	
30840			•	
30841			•	
30842			•	
30843			•	
30844			•	
30860	•			
30880	•			
30890		•		
30891		•		
3410		•		
3430		•		
3450BL		•		
3450GR		•		

## SIEMENS

SIEMENS	SA4350 SINGLE	SA4360 SINGLE	SA4950 SINGLE	SA4960 SINGLE	SA4961 PITCH	SA11X4 SINGLE	SA4260 SINGLE	SA1236 PITCH	SA1248 PITCH
3TF-2242							•		
3TX7 004-1LB0						•			
3TX7 004-1LB0						•			
3TX7 004-1LF00						•			
3TX7 004-1LF00						•			
8WA1	•								
8WA1 011-ODF21					•				
8WA1 011-ODG21			•	•					
8WA1 011-1BF23					•				
8WA1 011-1BF23					•				
8WA1 011-1DF11					•				
8WA1 011-1DF11					•				
8WA1 011-1DG11			•	•					
8WA1 011-3DF21					•				
8WA1 011-3DG21			•	•					
8WA1 011-ODF21					•				
8WA1 011-ODG21			•	•					
8WA1 221			•	•					
8WA1 221			•	•					
8WA1 741-2X			•	•					
8WA1 741-2X			•	•					
8WA1.../8WA2...			•						
8WA1.../8WA2...			•						
8WA1808							•		
8WA2					•				
8WA2 011-1DF20			•	•					
8WA2 011-1DF20			•	•					
8WH2040								•	
OTTA 2.5	•	•							•

## CONNECTWELL

CONNECTWELL	SA4295	SA4330	SA4340	SA5443	SA4335	SA5465	SA2620	SA4460	SA4441	SA2630
ADL2.5...	•									
CTS2.5UN	•									
CTS4UN	•						•			
CTS6U	•						•	•		•
CTS10U	•						•	•		•
CTS16U	•						•	•		•
CTS25U	•						•	•		•
CTS35U	•						•	•		•
CTS50U		•	•	•	•	•			•	
CTS95U		•	•	•	•	•			•	
CSCG2.5T	•									
CSCG4T	•									
CSCG6T	•									
CSCG10T	•							•		
CSCG16T	•							•		
CSCG35T	•							•		
CSFL4...	•							•		
CSC2.5T	•									
CSC4T	•									
CSC6T	•							•		
CSC10T	•							•		
CSC16T	•							•		
CA202	•						•			
CA702	•						•			•
CA802	•						•			•
CGT4N	•									
CGT6N	•						•	•		•
CGT4U	•						•			
CGT10U	•						•			•
CGT35U	•						•			•

## MURRELEKTRONIK

MURRELEKTRONIK	SA10X5	SA4260	SA4300	SA2610	SA2615	SA2620	SA2625	SA2630	SA4470
	SINGLE	SINGLE	PITCH	PITCH	PITCH	PITCH	PITCH	PITCH	PITCH
KET 5/10-5				•					
KET SNK 5/12-5					•				
KET 6/10-6						•			
KET SNK 6/12-6							•		
KET 8/10-8								•	
KET SNK 8/12-5									•
KM 4 (90931)									
KM 5 (90900)	•	•							
ME TERMINAL BLOCK 44212			•						

## WIELAND

WIELAND	4700	SA4310	SA4480
	PITCH	SINGLE	PITCH
9700 A S35		•	
97050 AI	•		
WK 2.5/ U		•	
WK 4/ U			•
WK 6/ U			
WK 8/ U			
WK 10/ U			
WK 25/ U			
WK 35/ U			
WKF 2.5/3.5	•		



# ACS/terminal block tag selection table

## ENTRELEC/ABB

ENTRELEC/ABB	SA4811 PITCH	SA4810 PITCH	SA2620 PITCH	SA2630 PITCH	SA5465 PITCH	SA4294 SINGLE	SA1232 PITCH	SA4290 PITCH	SA1234 PITCH	SA4300 PITCH	SA4350 SINGLE	SA4460 PITCH	SA1236 PITCH	SA4360 SINGLE	SA1042 SINGLE	
D 2.5/6.D																→
D 2.5/6.DPA1 (REF. 0115 643.27)																→
D1.5 /5											•	•		•		→
D2.2.5/6.DA (RC65)								•		•						→
D2.5/6.D							•	•	•							→
D2.5-5 2L								•								→
D2.5-5 2L								•								→
D2.5-5 2L2L													•			→
D2.5-5P.4L																→
D4/6 LNTP		•														→
D4-6 2L	•															→
D4-6P.2L		•														→
D6/8				•												→
D6-8 2L			•													→
D6-8P.2L			•													→
DR 4/6																→
ENK-BADL																→
M 10/10..			•													→
M 16/12..			•													→
M 35/16..			•													→
M 4/6..			•		•						•	•				→
M 4/8			•													→
M 6/8..				•												→
MA 2.5/5 (RC510)															•	→
MA 2.5/5D2 (RC510)						•										→
RC 510 (5X10 MM)																→
RC 55 (5X5 MM)																→
RC 610 (6X10 MM)			•													→
RC 65 (6X5 MM)																→
TIME RELAY MADEBY ENTRELEC/SCHIELE																→
5X10-5																→
5X12-5																→
6X10-6																→
6X12-6																→
8X10-8																→
8X12-5																→

	ENTRELEC/ABB	SA4310 SINGLE	SA4320 SINGLE	SA4370 SINGLE	SA4380 SINGLE	SA20X7 SINGLE	SA4363 PITCH	SA4361 PITCH	SA4813 SINGLE	SA2610 PITCH	SA2615 PITCH	SA2620 PITCH	SA2625 PITCH	SA2630 PITCH	SA4470 PITCH	
→	D 2.5/6.D								•							
→	D 2.5/6.DPA1 (REF. 0115 643.27)							•								
→	D1.5 /5															
→	D2.2.5/6.DA (RC65)															
→	D2.5/6.D															
→	D2.5-5 2L															
→	D2.5-5 2L															
→	D2.5-5 2L2L															
→	D2.5-5P.4L	•	•				•									
→	D4/6 LNTP															
→	D4-6 2L															
→	D4-6P.2L															
→	D6/8															
→	D6-8 2L			•	•		•									
→	D6-8P.2L			•	•		•									
→	DR 4/6						•									
→	ENK-BADL							•								
→	M 10/10..															
→	M 16/12..															
→	M 35/16..															
→	M 4/6..															
→	M 4/8															
→	M 6/8..															
→	MA 2.5/5 (RC510)															
→	MA 2.5/5D2 (RC510)															
→	RC 510 (5X10 MM)															
→	RC 55 (5X5 MM)						•									
→	RC 610 (6X10 MM)							•								
→	RC 65 (6X5 MM)							•								
→	TIME RELAY MADEBY ENTRELEC/SCHIELE					•										
→	5X10-5									•						
→	5X12-5										•					
→	6X10-6											•				
→	6X12-6												•			
→	8X10-8													•		
→	8X12-5														•	

# ACS/terminal block tag selection table

## PHOENIX

PHOENIX	SA4294 SINGLE	SA1126 PITCH	SA1232 PITCH	SA4290 PITCH	SA1234 PITCH	SA4300 PITCH	SA1228 PITCH	SA4350 SINGLE	SA4460 PITCH	SA4360 SINGLE	SA1042 SINGLE	SA4265 SINGLE	SA1054 SINGLE	SA4295 SINGLE
ASI IO SL DI 4/4				•										
ASI IO SL DIO 4/2/2				•										
ASI IO SL DIO 8/4/4				•										
ASI IO SL DO 4/4				•										
DFK 4								•	•	•				
DFK 4 - PE								•	•	•				
DFK 4 - SI								•		•				
DFK...								•		•				
DIK 1.5								•	•	•				
DIK 1.5 - LA (RD)								•	•	•				
DIKD 1.5								•	•	•				
DIKD 1.5 - LA								•	•	•				
DIKD 1.5 - PV								•	•	•				
DLK 2.5 - PE								•	•	•				
DLKB 2.5 PE								•	•	•				
DOK 1.5 - 2D								•	•	•				
DOK 1.5 LA								•	•	•				
DOKD 1.5 - TG								•	•	•				
E - UK								•		•				
GBS 5-UK/B				•										
GTF 76/230								•		•				
IB L2 BOX .....												•		
IBIL...DIVERSE								•						
INTERBUS MIR BOX											•			
SAB 24														
K4 - SP								•	•	•				
MBK 3/ E								•		•				
MBK 3/ E - Z				•		•								
MBK 3/ E - Z -PE				•		•								
MBKKB 2.5				•		•								
MBKKB 2.5 - DIO				•		•								
MBKKB 2.5 - PV				•		•								
MBKKB 2.5 + V				•		•								
MBT 2.5								•	•	•				
MBT 2.5 PE								•		•				
MSLKG 6								•		•				
MT 1.5	•													
MT 1.5 PE	•													
MT 1.5 QUATTRO	•													
MT 1.5 QUATTRO -PE	•													
MT 1.5 TWIN	•													
MT 1.5 TWIN -PE	•													
MTK - LOE						•								
MTK - P/P				•		•								
MTK - TP				•		•								
MTKD...				•				•		•				
MTTB 1.5	•													
MZB 1.5			•											
MZDB 1.5			•											
MZFK 1.5			•											
MZFKK 1.5			•											
MZFKKB 1.5			•											
OTTA 2.5								•		•				
OTTA 2.5 PE								•		•				
OTTA 25								•		•				
OTTA 6								•		•				
OTTA 6 - PE								•		•				
OTTA 6 - T								•		•				
PIK 4 -L								•		•				
PIK 4 -L / L								•		•				
PIK 4 -L /LB								•		•				
PIK 4 -PE / L / L								•		•				
PIK 4 -PE / L / N								•		•				
PIK 4 -PE / L / NT								•		•				
PIK 4 -PE / L / NTB								•		•				
PIK 6 -L / L								•		•				
PIK 6 -PE / L / L								•		•				
PIK 6 -PE / L / N								•		•				
PLC RSC								•		•				
QT 1.5							•		•					
QT 1.5 TWIN				•										
QT 1.5-PE							•		•					
RTK								•		•				
SACB-.../.....													•	
SACB-.../.....M8														•
SLKK 5								•	•	•				
SLKK 5 - LA								•	•	•				
SPB 2.5			•		•									
SSK 0525 KER-EX								•		•				

# ACS/terminal block tag selection table

## PHOENIX (CONTINUED)

PHOENIX	SA4294 SINGLE	SA1126 PITCH	SA1232 PITCH	SA4290 PITCH	SA1234 PITCH	SA4300 PITCH	SA1228 PITCH	SA4350 SINGLE	SA4460 PITCH	SA4360 SINGLE	SA1042 SINGLE	SA4265 SINGLE	SA1054 SINGLE	SA4295 SINGLE
SSK 110 KER-EX								•		•				
SSK 116 KER-EX								•		•				
ST 1.5	•													
ST 10							•							
ST 16							•							
ST 2.5			•											
ST 2.5 TWIN			•	•										
ST 2.5-PE			•											
ST 35				•			•							
ST 4							•							
ST 4 TWIN							•	•						
ST 6			•				•							
STL 2.5-PE/LLB			•											
STS 2.5 / 2.5 PE / QUATTRO MT/TG							•							
STS 4 / 4 PE / QUATTRO								•	•					
STTB 1.5			•											
STTB 2.5			•											
STTB 4							•							
STTBU 4							•							
TML...								•		•				
UDK 3				•		•								
UDK 3 - PE				•		•								
UDK 4								•		•				
UDK 4 - ILA								•		•				
UDK 4 - ULA								•		•				
UDK 4 MTK - P / P								•		•				
UDMTK 5 - P / P								•		•				
UDMTK 5 - TWIN - P / P								•		•				
UDT 4 TG								•		•				
UHSK / S 2000								•		•				
UHV 150								•		•				
UHV 240								•		•				
UHV 25								•		•				
UHV 50								•		•				
UHV 95								•		•				
UIK 16								•		•				
UIK 16 - PE / N								•		•				
UIK 35 - PE / N								•		•				
UIKN 35								•		•				
UISLKG 16								•		•				
UISLKG 35								•		•				
UK 1.5 N	•	•												
UK 10								•		•				
UK 10 - DREHSI								•		•				
UK 10 - EX								•		•				
UK 10 - N-PE / N								•		•				
UK 10 - PLUS								•		•				
UK 10 - PLUS - PE								•		•				
UK 10 - TWIN								•		•				
UK 10 - TWIN - PE								•		•				
UK 10 N								•		•				
UK 10 RETURN								•		•				
UK 10 RETURN - PE								•		•				
UK 10.3 - HESI								•		•				
UK 16								•		•				
UK 16 - EX								•		•				
UK 16 - PE / N								•		•				
UK 16 N								•		•				
UK 16 N - EX								•		•				
UK 16 N - PE / N								•		•				
UK 2.5				•		•								
UK 2.5 B								•	•	•				
UK 2.5 LOER								•	•	•				
UK 2.5 N				•		•								•
UK 3				•		•								
UK 3 - EX				•		•								
UK 3 - RETURN				•		•								
UK 3 - RETURN - PE				•		•								
UK 3 - TWIN				•		•								
UK 3 - TWIN - PE				•		•								
UK 3 N				•		•								
UK 35								•		•				
UK 35 - EX								•		•				
UK 35 - PE / N								•		•				
UK 4								•	•	•				
UK 4 - TG								•	•	•				
UK 4 - TG LOER - P/P								•	•	•				
UK 4 FS/FS								•	•	•				

# ACS/terminal block tag selection table

## PHOENIX (CONTINUED)

PHOENIX	SA4294 SINGLE	SA1126 PITCH	SA1232 PITCH	SA4290 PITCH	SA1234 PITCH	SA4300 PITCH	SA1228 PITCH	SA4350 SINGLE	SA4460 PITCH	SA4360 SINGLE	SA1042 SINGLE	SA4265 SINGLE	SA1054 SINGLE	SA4295 SINGLE
UK 4 FSR								•	•	•				
UK 4 LOER								•	•	•				
UK 4 TP								•	•	•				
UK 4 TP / TP								•	•	•				
UK 5								•	•	•				
UK 5 - HESI								•	•	•				
UK 5 - MTK - P/P								•	•	•				
UK 5 - R - L								•	•	•				
UK 5 - TWIN				•		•								
UK 5 - TWIN								•	•	•				
UK 5 - TWIN - EX				•				•	•	•				
UK 5 - TWIN - PE								•	•	•				
UK 5 / R - DRAHT								•	•	•				
UK 5 N								•	•	•				
UK 5 RETURN								•	•	•				
UK 5 RETURN - PE								•	•	•				
UK 6								•	•	•				
UK 6 N								•	•	•				
UK 6.3 HESI								•	•	•				
UK FRONT 4								•	•	•				
UK FRONT 4 - PE								•	•	•				
UK SI								•	•	•				
UKB 4 FS...								•	•	•				
UKD 4 PE								•	•	•				
UKH 150								•	•	•				
UKH 240								•	•	•				
UKH 25								•	•	•				
UKH 50								•	•	•				
UKH 50 - PE/N								•	•	•				
UKH 95								•	•	•				
UKH 95 - PE/N								•	•	•				
UKK 3				•		•								
UKK 4 - FS								•	•	•				
UKK 4 FS / FS								•	•	•				
UKK 5								•	•	•				
UKK 5 - 2 - DIO								•	•	•				
UKK 5 - DIO								•	•	•				
UKK 5 - LA								•	•	•				
UKK 5 - TG								•	•	•				
UKKB 10								•	•	•				
UKKB 10/2.5								•	•	•				
UKKB 10/2.5 - PE								•	•	•				
UKKB 3				•		•								
UKKB 5								•	•	•				
UKN 10 (N)								•	•	•				
UKN 16								•	•	•				
UKN 16N								•	•	•				
UKN 2.5								•	•	•				
UKN 35								•	•	•				
UKN 4								•	•	•				
UKN 5								•	•	•				
UKSN								•	•	•				
URK - ND								•	•	•				
URK - ND 2								•	•	•				
URKN								•	•	•				
URKN - A								•	•	•				
URKN/S								•	•	•				
URTK/S								•	•	•				
URTK/S-BEN								•	•	•				
URTK/SS								•	•	•				
URTK-BEN								•	•	•				
URTKD/SP								•	•	•				
USED 16								•	•	•				
USED 27								•	•	•				
USEN 14								•	•	•				
USEN 18								•	•	•				
USK 4 FSR...								•	•	•				
USK/SGSK								•	•	•				
USLKG 10 (N)								•	•	•				
USLKG 16								•	•	•				
USLKG 16 N								•	•	•				
USLKG 2.5								•	•	•				
USLKG 2.5-N				•		•								
USLKG 3				•		•								
USLKG 35								•	•	•				
USLKG 4								•	•	•				
USLKG 5								•	•	•				
USLKG 50								•	•	•				
USLKQ 95								•	•	•				
UT 2.5								•	•	•				
UT 4								•	•	•				
UT 4 BU								•	•	•				•



# ACS/terminal block tag selection table

## PHOENIX (CONTINUED)

PHOENIX	SA4294 SINGLE	SA1126 PITCH	SA1232 PITCH	SA4290 PITCH	SA1234 PITCH	SA4300 PITCH	SA1228 PITCH	SA4350 SINGLE	SA4460 PITCH	SA4360 SINGLE	SA1042 SINGLE	SA4265 SINGLE	SA1054 SINGLE	SA4295 SINGLE
UT 4 YE										•				
UT 4-MTD BU										•				
UT 4-MTD-PE										•				
UTK 35										•				
UXKK 4								•	•	•				
VBSN 4 FS ....										•				
VBST 4 FS/FS										•				
VIOK 1.5								•						
VIOK 1.5-2ID								•						
VIOK 1.5-3D/PE								•						
VIOK 1.5-D/TG/D/PE							•	•						
VIOK 1.5-LA								•						
ZDIK 1.5			•											
ZDMTK 2.5							•							
ZFDK 2.5				•										
ZFDK -PE				•										
ZFK 1.5	•	•												
ZFK 16								•						
ZFK 2.5-PE				•										
ZFK 2.5-PE/L/N								•						
ZFK 2.5-TWIN				•										
ZFK 2.5-TWIN - PE				•										
ZFK 4								•						
ZFK 4-PE								•						
ZFK 4-TG								•						
ZFK 6								•						
ZFK L 4								•						
ZFKK 2.5(-MT)				•										
ZFKN 4								•						
ZVIOK 1.5			•											
ZVIOK 1.5/1.5 LA			•											
ZVIOK 1.5-2D			•											
ZVIOK 1.5-D/ TG/D/PE			•											
ZVIOK 1.5-LA			•											
ZVKK 4 FS			•					•		•				

## WAGO

WAGO	SA5465 PITCH	SA4330 SINGLE	SA4390 SINGLE	SA4294 SINGLE	SA4290 PITCH	SA4350 SINGLE	SA4700 PITCH	SA1430 PITCH	SA4363 PITCH	SA4361 PITCH	SA4362 SINGLE	SA5465 PITCH
2002-1201 TOP-JOB									•			
2002-1401 TOP-JOB									•			
2004-1201 TOP-JOB									•			
249-117									•			
264-321									•			
264-324									•			
264-351									•			
264-711								•				
270-570								•				
279-104				•								
279-105				•								
279-106				•								
279-107				•								
279-108				•								
279-109				•								
279-110				•								
279-111				•								
279-112				•								
279-113				•								
279-114				•								
279-115				•								
279-116				•								
279-117				•								
279-118				•								
279-119				•								
279-120				•								
279-121				•								
279-122				•								
279-123				•								
279-124				•								
279-125				•								
279-126				•								
279-127				•								
279-128				•								
279-129				•								
279-130				•								

# ACS/terminal block tag selection table

## WAGO (CONTINUED)

WAGO	SA5465 PITCH	SA4330 SINGLE	SA4390 SINGLE	SA4294 SINGLE	SA4290 PITCH	SA4350 SINGLE	SA4700 PITCH	SA1430 PITCH	SA4363 PITCH	SA4361 PITCH	SA4362 SINGLE	SA5465 PITCH
279-131				•								
279-132				•								
280-520										•		
280-560					•					•		
280-601					•					•		
280-607					•					•		
280-612					•					•		
280-622					•					•		
280-626					•					•		
280-641					•					•		
280-646					•					•		
280-649					•					•		
280-650					•					•		
280-651					•					•		
280-653					•					•		
280-654					•					•		
280-656					•					•		
280-671					•					•		
280-672					•					•		
280-676					•					•		
280-681					•					•		
280-683					•					•		
280-684					•					•		
280-685					•					•		
280-687					•					•		
280-695					•					•		
280-830					•					•		
280-831					•					•		
280-832					•					•		
280-833					•					•		
280-834					•					•		
280-835					•					•		
280-836					•					•		
280-837					•					•		
280-869					•					•		
280-870					•					•		
280-871					•					•		
280-874					•					•		
280-875					•					•		
280-876					•					•		
280-878					•					•		
280-880					•					•		
280-881					•					•		
280-882					•					•		
280-883					•					•		
280-884					•					•		
280-885					•					•		
280-901					•					•		
280-902					•					•		
280-903					•					•		
280-904					•					•		
280-905					•					•		
280-906					•					•		
280-907					•					•		
280-912					•					•		
280-946					•					•		
281-601						•						
281-604						•						
281-607						•						
281-631						•						
281-652						•						
281-653						•						
281-654						•						
281-657						•						
281-659						•						
281-660						•						
281-663						•						
281-664						•						
281-666						•						
281-668						•						
281-678						•						
281-679						•						
281-681						•						
281-683						•						
281-684						•						
281-685						•						
281-686						•						
281-687						•						

# ACS/terminal block tag selection table

## WAGO (CONTINUED)

WAGO	SA5465 PITCH	SA4330 SINGLE	SA4390 SINGLE	SA4294 SINGLE	SA4290 PITCH	SA4350 SINGLE	SA4700 PITCH	SA1430 PITCH	SA4363 PITCH	SA4361 PITCH	SA4362 SINGLE	SA5465 PITCH
281-901						•						
281-901						•						
281-902						•						
281-903						•						
281-904						•						
281-905						•						
281-906						•						
281-907						•						
281-912						•						
282-601						•						
282-604						•						
282-607						•						
282-681						•						
282-682						•						
282-684						•						
282-687						•						
282-901						•						
282-902						•						
282-904						•						
282-907						•						
283-602						•						
283-604						•						
283-607						•						
283-609						•						
283-671						•						
283-672						•						
283-674						•						
283-677						•						
283-901						•						
283-902						•						
283-904						•						
283-907						•						
284-601						•						
284-604						•						
284-607						•						
284-681						•						
284-682						•						
284-684						•						
284-687						•						
284-901						•						
284-902						•						
284-904						•						
284-907						•						
285-195										•		
285-601						•						
285-605						•						
290-681										•		
750-XXX	•	•	•						•	•	•	
769-237									•			
775-641							•			•		
775-642										•		
777-641							•	•		•		
780-601							•			•		
781-601							•	•		•		
782-601							•	•		•		
782-604							•	•		•		
782-607							•	•		•		
783-601							•	•		•		
783-604							•	•		•		
783-607							•	•		•		
784-601							•	•		•		
785-601							•	•				
870-501		•								•		
870-501												•
870-507		•										
870-531									•			
870-538									•			
870-551		•										
870-551												•
870-567										•		
870-831										•		
870-901										•		
880-901		•										
X-COM SYSTEM BASE TERMINAL BLOCK									•			

# ACS/terminal block tag selection table

**WEIDMULLER**

WEIDMULLER	SA1034 PITCH	SA5465 PITCH	SA4330 SINGLE	SA4335 SINGLE	SA5443 PITCH	SA4340 SINGLE	SA5444 PITCH	SA4370 SINGLE	SA4441 PITCH	SA4380 SINGLE	SA4260 SINGLE	SA4330 SINGLE
AKZ 4./AKB 4 ...												
BZT ZVL 1.5			•			•			•	•		
DLA 2.5								•	•	•	•	
DLD 2.5								•	•	•	•	
DLI 2.5								•	•	•	•	
EK 10								•		•	•	
EK 16								•	•	•	•	
EK 2.5								•		•	•	
EK 35								•		•	•	
EK 6								•		•	•	
EW 15/2 NO ADAPTATION												
EW15			•			•						
EW35								•		•	•	
EWK1								•		•	•	
EWK2								•		•	•	
IAK 1.5N 3L			•			•						•
IDK 1.5			•									
IDK 1.5N			•			•						
IDK 1.5N/V			•			•						
IDU 1.5N			•			•						
IDU 2.5N								•				•
IEK 1.5N			•									
IHK 1.5N			•									
IPE 1.5N			•									
IPE 2.5N								•				
ITR 1.5N			•									
MAK 2.5								•	•	•		
MAK 2.5/VLI 1.5								•	•	•		
NT 10								•		•		
NT 16								•		•		
NT 4								•	•	•		
NT 6								•		•		
PDU 2.5/4				•								
SAI-4-N 170592											•	
SAI-M16/M23 IN SAI-M8								•				
SAK 10 (PA)								•		•		
SAK 16								•		•		
SAK 2.5								•	•	•		
SAK 35								•		•		
SAK 4								•		•		
SAK 6								•		•		
SAK 70								•		•		
SAK 95								•		•		
SAKA 10								•		•		
SAKB 10								•		•		
SAKC 10								•		•		
SAKC 4								•		•		
SAKD 2.5 N		•	•		•	•	•					
SAKG 28								•		•		
SAKG 32								•		•		
SAKG 40								•		•		
SAKG 46								•		•		
SAKG 54								•		•		
SAKG 70								•		•		
SAKR								•		•		
SAKRD								•		•		
SAKS 1								•		•		
SAKS 2								•		•		
SAKS 3								•		•		
SAKS 4								•		•		
SAKS 5 A								•		•		
SAKT 1								•		•		
SAKT 2								•		•		
SAKT 4								•	•	•		
SAL-8-N											•	
SS 10								•		•		
SS 12								•		•		
SS 6								•		•		
SS 8								•		•		
TOP 2.5								•		•		
TOP 4								•	•	•		
VDK 2.5 BLA R5.08		•	•		•	•	•					
VLI 2.5								•	•	•		
WDK 1.5/3.5	•											
WDK 2.5		•	•	•	•	•	•					
WDK 2.5 800V								•	•	•		
WDK 2.5 BLZ R5.08		•	•		•	•	•					
WDK 2.5N		•	•		•	•	•					
WDK 4N								•	•	•		
WDL 2.5 -		•	•		•	•	•					
WDL 2.5/S		•	•		•	•	•					
WDT 1.5								•		•		



# ACS/terminal block tag selection table

## WEIDMULLER (CONTINUED)

WEIDMULLER	SA1034 PITCH	SA5465 PITCH	SA4330 SINGLE	SA4335 SINGLE	SA5443 PITCH	SA4340 SINGLE	SA5444 PITCH	SA4370 SINGLE	SA4441 PITCH	SA4380 SINGLE	SA4260 SINGLE	SA4330 SINGLE
WDTR 2.5								•				
WDU 1.5		•	•		•	•	•					
WDU 1.5 BLA		•	•		•	•	•					
WDU 1.5 LD/BLA		•	•		•	•	•					
WDU 1.5/BLZ 5.08		•	•		•	•	•					
WDU 1.5/BLZ R7.62		•	•		•	•	•					
WDU 1.5/BLZ/LD/5.08		•	•		•	•	•					
WDU 1.5/R 3.5		•			•	•						
WDU 1.5/R/BLA	•											
WDU 1.5ZZ		•	•		•	•	•					
WDU 10		•	•		•	•	•					
WDU 10SL								•			•	
WDU 120/150								•			•	
WDU 16								•			•	
WDU 2.5 N								•			•	
WDU 2.5		•	•		•	•	•					
WDU 2.5 F		•	•	•	•	•	•					
WDU 2.5 FF		•	•		•	•	•					
WDU 2.5 TC		•	•		•	•	•					
WDU 2.5/1.5/ZZ		•			•	•	•					
WDU 240			•									
WDU 35 N								•			•	
WDU 4								•	•		•	
WDU 4N								•	•		•	
WDU 6								•			•	
WDU 70/95								•			•	
WDU 95N			•									
WFF 120								•			•	
WFF 185								•			•	
WFF 300								•			•	
WFF 35								•			•	
WFF 70								•			•	
WIN BLOCK		•	•		•	•	•					
WNT 10								•			•	
WNT 2.5		•	•		•	•	•					
WNT 4		•	•		•	•	•					
WNT 6								•			•	
WPE 1.5		•	•		•	•	•					
WPE 1.5/ZZ		•	•		•	•	•					
WPE 10								•			•	
WPE 16								•			•	
WPE 2.5		•	•		•	•	•					
WPE 2.5/1.5/ZR		•	•		•	•	•					
WPE 35								•			•	
WPE 4								•	•		•	
WPE 6								•			•	
WSI 6								•			•	
WSI 6/2								•			•	
WTL 6/1								•			•	
WTL 6/2								•			•	
WTR 2.5		•	•		•	•	•				•	
ZBLD 2.5/1.5				•								
ZBV 1.5PE				•								
ZDJU 2.5/2X2AN (E) BL				•								
ZDK 1.5	•											
ZDK 2.5/1.5				•								
ZDK 2.5/1.5 DU-PE				•								
ZDK 2.5/1.5 N-PE				•								
ZDK 2.5/1.5 V/E				•								
ZDK 2.5/1.5/E				•								
ZDK 2.5/1.5/E BL				•								
ZDK 2.5/1.5/LD/1				•								
ZDK 2.5/1.5/LD/2				•								
ZDK 2.5/1.5/N-PE/E				•								
ZDK 2.5/1.5D1...6				•								
ZDK 2.5/1.5N-DU				•								
ZDK 2.5/1.5N-DU/E				•								
ZDK 2.5/1.5N-DU/PE/E				•								
ZDK 2.5/1.5PE				•								
ZDK 2.5/1.5V				•								
ZDK 2.5DU-PE												•
ZDKB				•								
ZDKS				•								
ZDL 2.5 / 1.5 V				•								
ZDL 2.5/1.5				•								
ZDU 1.5	•											
ZDU 10 NT				•								
ZDU 16 16/3AN			•									
ZDU 2.5				•		•						
ZDU 2.5 (E)				•								
ZDU 2.5 (E) BL				•								
ZDU 2.5 2.5/10		•	•	•	•	•	•					

## WEIDMULLER (CONTINUED)

WEIDMULLER	SA1034 PITCH	SA5465 PITCH	SA4330 SINGLE	SA4335 SINGLE	SA5443 PITCH	SA4340 SINGLE	SA5444 PITCH	SA4370 SINGLE	SA4441 PITCH	SA4380 SINGLE	SA4260 SINGLE	SA4330 SINGLE
ZDU 2.5/2X2AN				•								
ZDU 2.5/2X2AN/10				•								
ZDU 2.5/2X2AN/D				•								
ZDU 2.5/2X2AN/E				•								
ZDU 2.5/2X2AN/LD				•								
ZDU 2.5/3AN		•	•	•	•	•	•					
ZDU 2.5/3AN (E) BL				•								
ZDU 2.5/3AN/10				•								
ZDU 2.5/3AN/E				•								
ZDU 2.5/4AN		•	•	•	•	•	•					
ZDU 2.5/4AN (E) BL				•								
ZDU 2.5/4AN/10				•								
ZDU 2.5-2		•	•	•	•							
ZDU 2.5-2/3				•								
ZDU 2.5-2/3AN (E) BL				•								
ZDU 2.5-2/4N (E)				•								
ZDU 2.5-2/4AN (E) BL				•								
ZDU 35			•									
ZDU 4								•	•			
ZDU 6								•				
ZDUA 2.5-2 (E)				•								
ZDUA 2.5-2 (E) BL				•								
ZDUB 2.5 / 2-2/4AN				•								
ZDUB 2.5 / 2AN				•								
ZDUB 2.5-2/2AN				•								
ZIA 1.5/....		•	•	•	•	•	•					
ZK3S				•								
ZKB				•								
ZKS				•								
ZMAK 2.5				•								
ZPE 2.5				•								
ZPE 2.5/3AN				•								
ZPE 2.5/3AN/E				•								
ZPE 2.5/4AN		•	•	•	•	•	•					
ZPE 2.5/4AN				•								
ZPE 2.5/4AN/E				•								
ZPE 2.5/E				•								
ZPE 2.5-2 (E)				•								
ZPE 2.5-2/3AN				•								
ZPE 2.5-2/3AN/E		•	•	•	•	•	•					
ZPE 2.5-2/4AN				•								
ZPE 35				•								
ZPEA -2/E				•								
ZRV 1.5				•								
ZSI 2.5				•								
ZSI 2.5/2				•								
ZSLD 2.5/1.5				•								
ZTR 2.5		•	•	•	•	•	•					
ZTR 2.5 D		•	•	•	•	•	•					
ZTR 2.5/3AN				•								
ZVL 1.5 ...		•	•	•	•	•	•					

**Africa**

Randburg, South Africa  
 Tel.: +27 11 704 3295  
 Email: africa@bradycorp.com

**Benelux**

Zele, Belgium  
 Tel.: +32 (0) 52 45 78 11  
 Email: benelux@bradycorp.com

**Central & Eastern Europe**

Bratislava, Slovakia  
 Tel.: +421 2 3300 4800  
 Email: central\_europe@bradycorp.com

**Denmark**

Odense  
 Tel.: +45 66 14 44 00  
 Email: denmark@bradycorp.com

**France**

Roncq  
 Tel.: +33 (0) 3 20 76 94 48  
 Email: france@bradycorp.com

**Germany, Austria & Switzerland**

Egelsbach, Germany  
 Tel.: +49 (0) 6103 7598 660  
 Email: germany@bradycorp.com

**Hungary**

Budaörs  
 Tel.: +36 23 500 275  
 Email: central\_europe@bradycorp.com

**Italy**

Gorgonzola  
 Tel.: +39 02 26 00 00 22  
 Email: italy@bradycorp.com

**Middle East FZE**

Dubai, UAE  
 Tel.: +971 4881 2524  
 Email: me@bradycorp.com

**Norway**

Kjeller  
 Tel.: +47 70 13 40 00  
 Email: norway@bradycorp.com

**Romania**

Bucharest  
 Tel.: +40 21 202 3032  
 Email: central\_europe@bradycorp.com

**Russia**

Moscow  
 Tel.: +7 495 269 47 87  
 Email: central\_europe@bradycorp.com

**Spain & Portugal**

Madrid, Spain  
 Tel.: +34 900 902 993  
 Email: spain@bradycorp.com,  
 portugal@bradycorp.com

**Sweden, Finland, Baltic states**

Kista, Sweden  
 Tel.: +46 (0) 8 590 057 30  
 Email: sweden@bradyeurope.com

**Turkey**

Istanbul  
 Tel.: +90 212 264 02 20 / 264 02 21  
 Email: turkey@bradycorp.com

**UK & Ireland**

Banbury, UK  
 Tel.: +44 (0) 1295 228 288  
 Email: uk@bradycorp.com

# Our mission is to identify and protect people, products and premises



To help minimise our impact on the environment, Brady limits its number of reprints.

Updated versions are always available for download on [www.bradyeurope.com](http://www.bradyeurope.com).

 Search for: EUR-O-912-EN



Your distributor

21/07/2020