

2022 Product Catalog

MSRP Effective October 1, 2022



SnapNrack[®]

877-732-2860



www.SnapNrack.com



contact@snapNrack.com

Table of Contents

Pitched Roof

RL Universal | *Railless Mounting* **5**

| | |
|---------------------------------------|---|
| RL-U Components | 6 |
| SpeedSeal™ Track for RL Universal | 6 |
| SpeedSeal™ DeckTrack for RL Universal | 6 |
| Wire Management & Grounding | 6 |

Ultra Rail | *Rail-based Mounting* **7**

| | |
|------------------------------------|----|
| UR-40/60 Rail & Accessories | 8 |
| Flashing & L Foot Attachments | 9 |
| SpeedSeal™ Foot for Ultra Rail | 9 |
| SpeedSeal™ DeckFoot for Ultra Rail | 9 |
| Module Clamps | 10 |
| Tile Roof Solutions | 11 |
| Wire Management Solutions | 12 |

MightyMount | *Railless Mounting* **13**

| | |
|---------------------|----|
| MightyMount Comp-S | 14 |
| MightyMount Metal-T | 14 |

NEW

Flat & Metal Roofs

Ultra Rail Tilt System **15**

| | |
|-----------------------------------|----|
| Metal Roof Attachments | 17 |
| Standoff Components & Accessories | 17 |

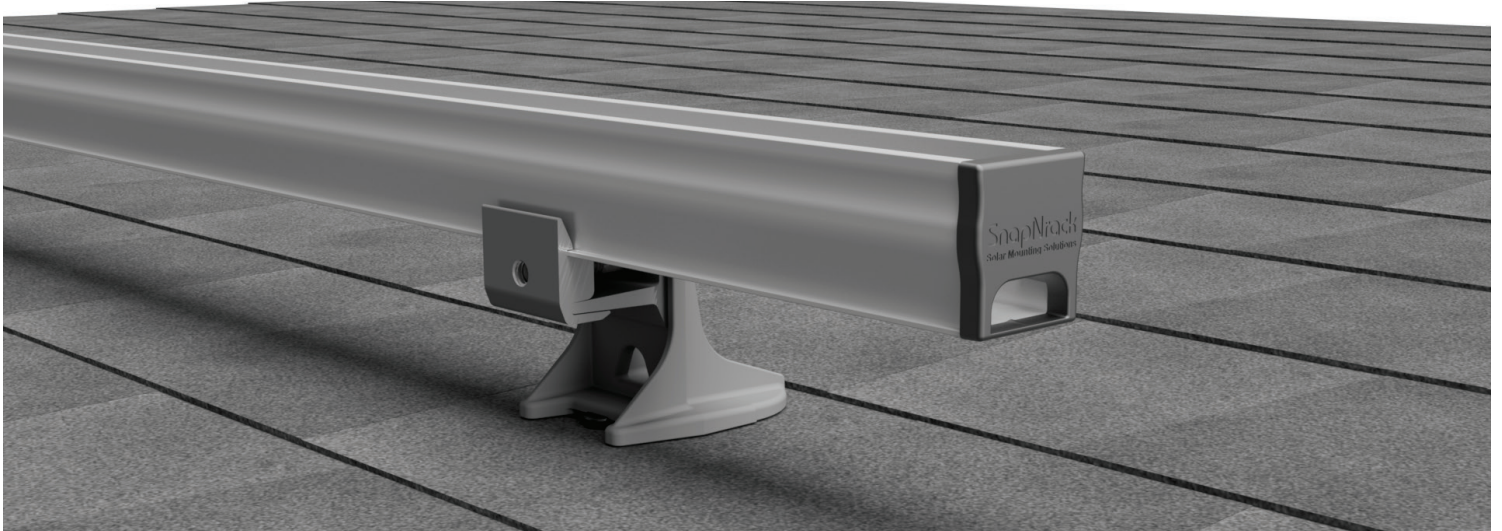
Accessories **18**

Ground Mount

Series 200 | *Ground Mount* **19**

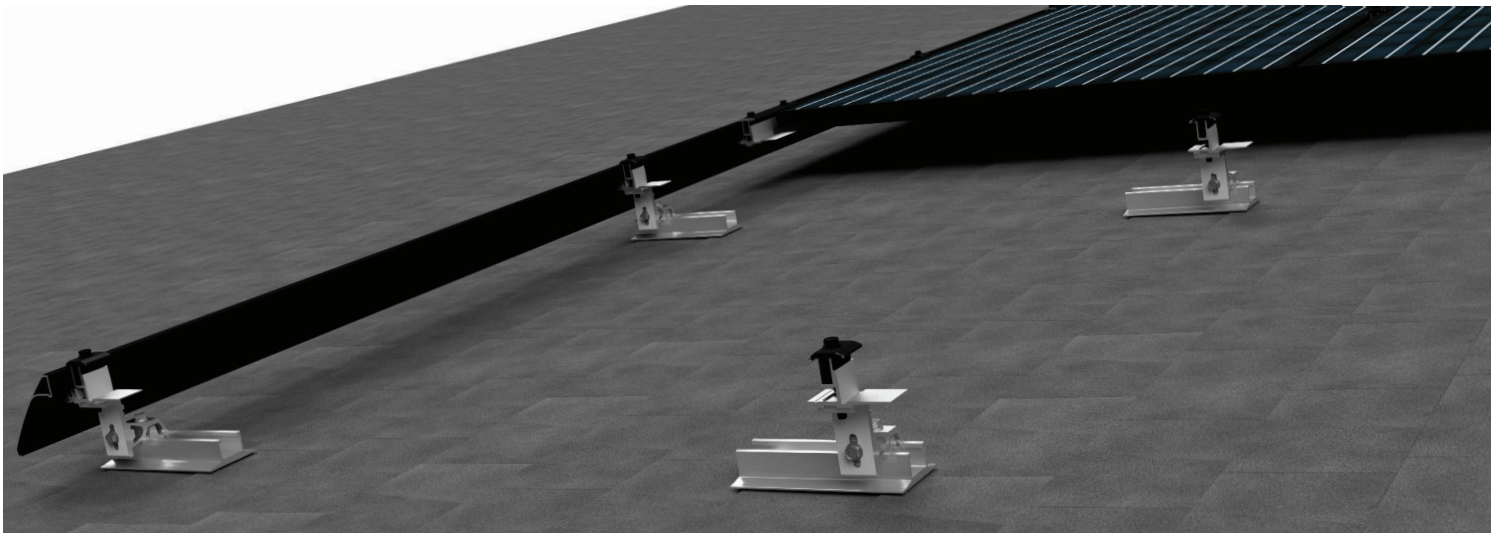
| | |
|---------------------------------------|----|
| Series 200 Rail & Structural Fittings | 20 |
|---------------------------------------|----|

SnapNrack Solar Mounting Solutions



Ultra Rail Roof Mount System | *Rail-based Mounting*

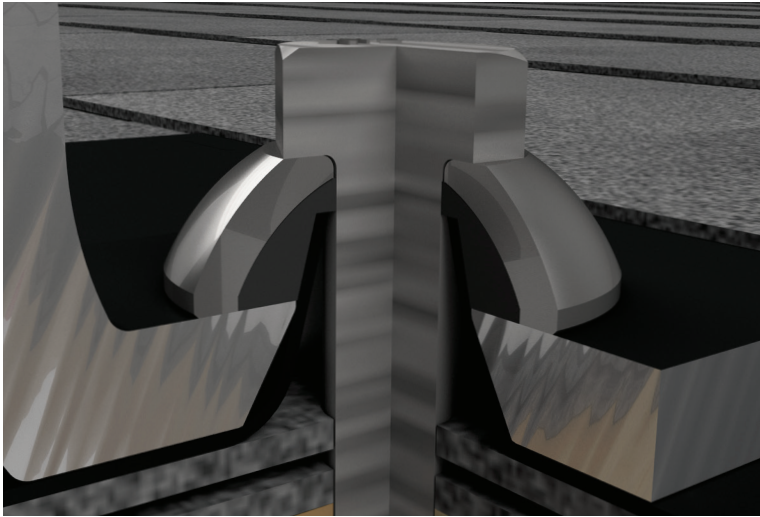
The SnapNrack **Ultra Rail Roof Mount** portfolio satisfies virtually all residential roof types featuring labor saving components like the snap-in mounts and splices along with the open rail channel and accessories to create the industry's leading Wire Management Solutions.



RL Universal Roof Mount System | *Railless Mounting*

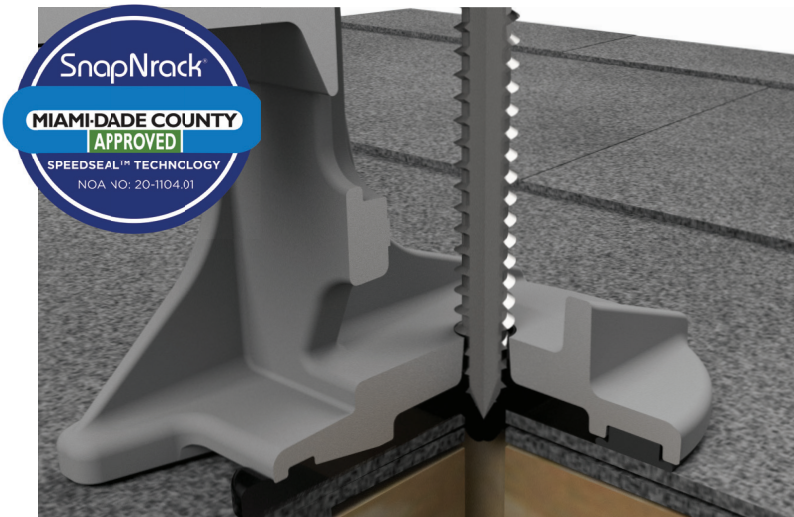
SnapNrack's **RL Universal System (RL-U)** for composition shingle roofs provides the greatest labor efficiency with an installer focused process allowing the system to be installed by a single person, saving time on the roof. This railless system was designed with an installer-focused approach, featuring Universal Mounts and nothing larger than a module.

Flashing Based | Roof Attachment Technology



The SnapNrack **Umbrella Seal Technology** is an innovative flashing that uses a fully formed raised cone to prevent any water leakage. When paired with a single lag bolt & our Umbrella Washer, the Ultra Rail L Foot Mount is secured to the roof with the Umbrella Flashing in one step creating a multi-layer waterproof seal.

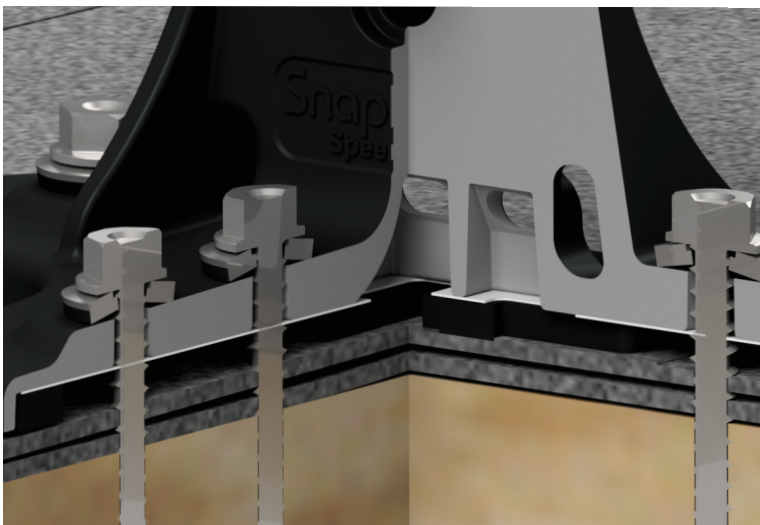
Integrated Flashing | Roof Attachment Technology



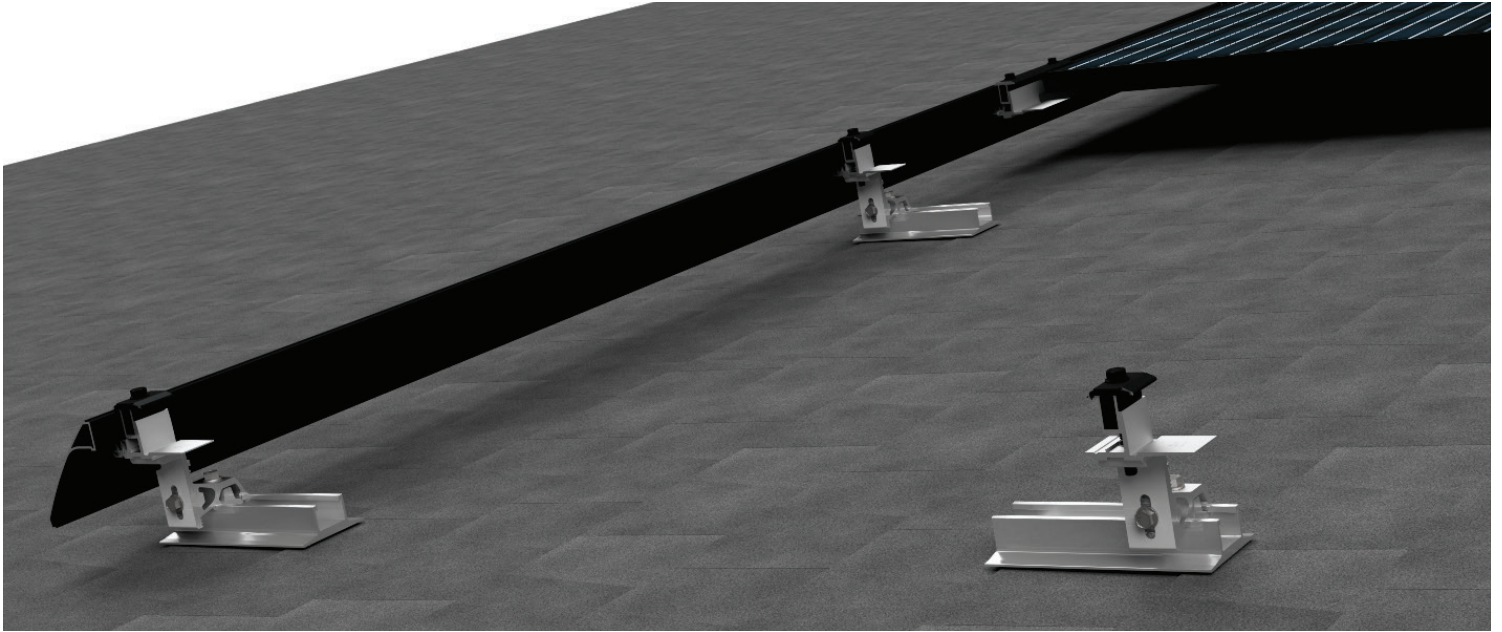
SnapNrack's new **SpeedSeal™ Technology** features an innovative design that incorporates flashing reliability into a single roof attachment by using a patent pending Lag Driven Sealant Technology. The SpeedSeal™ Foot or Track has a sealant cavity with compressible barrier secures sealant in place & fills voids.

Miami-Dade NOA NO: 20-1104.01

Direct to Deck | Roof Attachment Technology



Now **SpeedSeal™ Technology** applies to roof attachments that mount directly to the deck with the **SpeedSeal™ DeckFoot & DeckTrack**. These rafter independent attachments allow for layout adjustability on the roof without the need to locate & attach to rafters. More importantly, installers have the ability to mount on specialty roof structures without standard rafters.



SnapNrack RL Universal The Fastest Mounting System. Period

SnapNrack RL Universal Mounting System is designed to provide the fastest, most intuitive install experience on the roof. The direct mount system features four basic components for easy material management. Features incredible flexibility with a single Universal Mount that fits module heights from 30 - 40 mm and the highest spans of any current rail less system. The installer focused process allows the system to be installed by a single person.

- The RL Universal Skirt ensures a strong structure for leveling and alignment of first row of modules.
- Both SpeedSeal™ Technology or Umbrella Seal Technology roof attachments are designed for maximum versatility with 6" of North-South adjustability for all Mounts.
- A single Umbrella Lag screw secures flashing & Flash Track to roof in one complete action.
- A single Mount is used at all locations on array and eliminates Mount/Link interference, bypassing the need for hybrid mounts found in competitive systems.
- The Links clamp onto the top of modules securing them in place while providing row-to-row bonding.

More Info

[RL Universal Product Page](#)

RL Universal Configuration Tool

Design a system & download a BOM to quote with the online Configuration Tool

Visit Resource Library

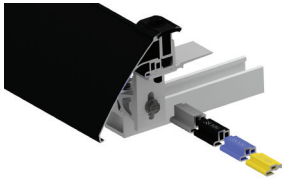
Download Structural Engineering, Installation Manuals & System Drawings



RL-U Components



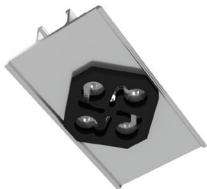
RL-U Flash Track with Flashing & Mount
(All Sold Separately)



RL-U Skirt with Mount, Flash Track & Spacers
(All Sold Separately)



RL-U SpeedSeal™ Track with Mount
(All Sold Separately)



RL-U SpeedSeal™ DeckTrack
(Bottom view)



RL Universal Link



Smart Clip XL

RL-U Skirt Components

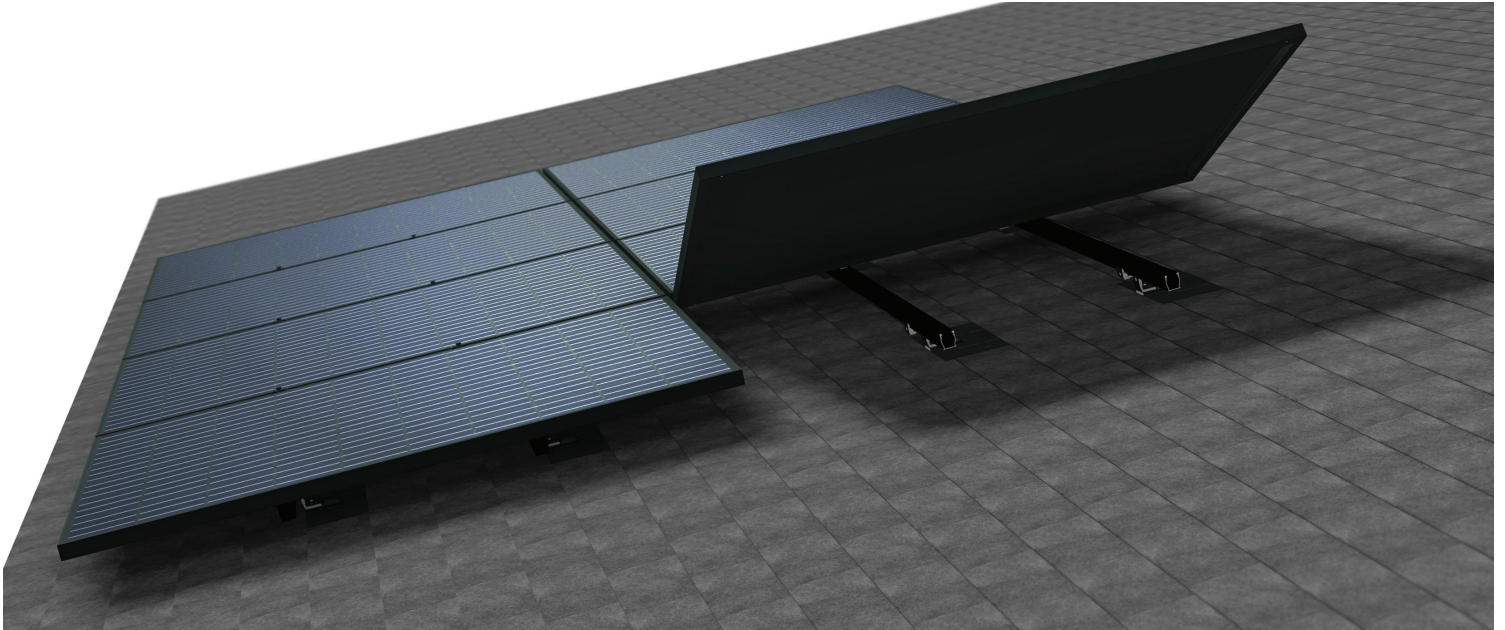
| Description | SKU | MSRP | QTY* |
|-----------------------------------------------------------------------------|------------|----------|-------|
| Universal Landscape Skirt, 70", Black (Bundle of 72, priced as each) | 232-02492 | \$45.97 | 72 EA |
| Universal Landscape Skirt, 70", Black (Box of 6) | 015-11791 | \$282.90 | 1 Box |
| Universal Double Portrait Skirt, 83", Black, (Bundle of 72, priced as each) | 232-02493 | \$52.67 | 72 EA |
| Universal Double Portrait Skirt, 83", Black, (Box of 6) | 015-11792 | \$338.80 | 1 Box |
| Universal Skirt Frame Mount | 242-10006+ | \$8.00 | 20 EA |
| Universal Skirt Cap | 232-10019+ | \$2.00 | 20 EA |
| RL Universal Skirt Spacer, 30mm | 232-02532 | \$0.75 | 20 EA |
| RL Universal Skirt Spacer, 32mm | 232-02494 | \$0.75 | 20 EA |
| RL Universal Skirt Spacer, 35mm | 232-02495 | \$0.75 | 20 EA |
| RL Universal Skirt Spacer, 38mm | 232-02496 | \$0.75 | 20 EA |
| RL Universal Skirt Spacer, 40mm | 232-02497 | \$0.75 | 20 EA |

RL-U Mount Components

| Description | SKU | MSRP | QTY* |
|------------------------------------------------------------------|------------|---------|-------|
| RL Universal Flash Track | 232-01371 | 5.00 | 20 EA |
| Comp Flashing, 9" x 12", Black Alum (requires Umbrella Lag) | 232-01375 | \$6.06 | 20 EA |
| Comp Flashing, 9" x 12", Silver Alum (requires Umbrella Lag) | 232-01376 | \$5.03 | 20 EA |
| Comp Flashing, 9" X 12", Black Galvalume (requires Umbrella Lag) | 232-01377 | \$5.20 | 20 EA |
| Umbrella Lag, 4" | 242-92266 | \$1.55 | 20 EA |
| RL Universal SpeedSeal™ Track | 232-01464 | \$8.75 | 20 EA |
| Sealing Washer Lag, 4 1/2", SS | 242-02168 | \$1.25 | 20 EA |
| RL Universal SpeedSeal™ DeckTrack | 242-02171 | \$11.00 | 20 EA |
| Sealing Washer Wood Screw, #14 X 2 3/4", SS | 242-02175 | \$1.00 | 40 EA |
| Sealing Wood Screw, #14 x 2 3/4", 1/2 HEX, SS (80 pack) | 015-30008+ | \$60.00 | 1 EA |
| RL Universal Mount | 242-02155 | \$11.75 | 20 EA |
| RL Universal Link | 242-02156 | \$12.86 | 20 EA |

RL-U Wire Management & Accessories

| Description | SKU | MSRP | QTY* |
|----------------------------------|-----------|---------|--------|
| Smart Clip II | 232-01173 | \$0.44 | 100 EA |
| Smart Clip XL | 232-01176 | \$0.61 | 100 EA |
| Wire Saver | 242-92262 | \$2.82 | 20 EA |
| Junction Box XL with Comp Kit | 242-92121 | \$49.95 | 1 Kit |
| Universal Wire Clamp for J Box | 242-09025 | \$4.27 | 1 EA |
| MLPE Frame Attachment Kit | 242-02151 | \$4.68 | 20 EA |
| Flash Track Universal Wire Clamp | 242-92641 | \$6.44 | 20 EA |
| RL Flash Track Leveling Spacer | 242-92254 | \$8.98 | 20 EA |



SnapNrack Ultra Rail **The Ultimate Value in Rooftop Solar**

Ultra Rail is the ultimate rail solution for mounting solar modules on the roof. The entire system is a snap to install utilizing new pre-assembled Ultra Rail Mounts that include snap-in brackets for attaching rail. Snap-in module clamps provide an intuitive install experience installers know and love.

- Industry-leading aesthetics with Universal End Clamps and snap-in End Caps that make the mounting system invisible underneath the array.
- Unparalleled wire management solutions with accessories such as Junction Boxes, Universal Wire Clamps, MLPE Attachment Kits, and Conduit Clamps.
- Low profile rail maintains the open channel with room for running wires resulting in a top quality finished install.
- UR-40 has the largest span capabilities of any light rail solution.
- UR-60 is a heavy duty profile for higher loading conditions.

More Info

[Ultra Rail Product Page](#)

Ultra Rail Configuration Tool

Design a system & download a BOM to quote with the online Configuration Tool

Visit Resource Library

Download Structural Engineering, Installation Manuals & System Drawings

UR-40/60 Rail & Accessories



UR-40 Rail, Black



UR-40 Splice



UR-40 End Cap



UR-60 Rail, Black



UR-60 Splice



UR-60 End Cap

UR-40 Rail

| Description | SKU | MSRP | QTY* |
|-------------------------------------------------------------|-----------|----------|--------|
| UR-40 Rail, 172", Black (Bundle of 144, priced as each) | 232-02538 | \$60.91 | 144 EA |
| UR-40 Rail, 172", Silver (Bundle of 144, priced as each) | 232-02537 | \$59.79 | 144 EA |
| UR-40 Rail, 172", Mill (Bundle of 144, priced as each) | 232-02536 | \$55.75 | 144 EA |
| UR-40 Rail, 172", Black (Box of 4) | 015-10207 | \$271.19 | 1 Box |
| UR-40 Rail, 172", Silver (Box of 4) | 015-10208 | \$266.67 | 1 Box |
| UR-40 Rail, 172", Mill (Box of 4) | 015-10209 | \$255.22 | 1 Box |

UR-60 Rail

| Description | SKU | MSRP | QTY* |
|------------------------------------------------------------|-----------|----------|--------|
| UR-60 Rail 172", Black (Bundle of 120, priced as each) | 232-02541 | \$79.81 | 120 EA |
| UR-60 Rail 172", Silver (Bundle of 120, priced as each) | 232-02540 | \$78.96 | 120 EA |
| UR-60 Rail 172", Mill (Bundle of 120, priced as each) | 232-02539 | \$72.50 | 120 EA |
| UR-60 Rail Set, 172", Black (Box of 4) | 015-10210 | \$373.78 | 1 Box |
| UR-60 Rail Set, 172", Silver (Box of 4) | 015-10211 | \$369.79 | 1 Box |
| UR-60 Rail Set, 172", Mill (Box of 4) | 015-10212 | \$346.72 | 1 Box |

UR-40 Rail Accessories

| Description | SKU | MSRP | QTY* |
|----------------------|-----------|--------|-------|
| UR-40 Splice, Silver | 242-01213 | \$8.70 | 20 EA |
| UR-40 Splice, Black | 242-01214 | \$9.24 | 20 EA |
| UR-40 End Cap | 232-02452 | \$0.70 | 20 EA |

UR-60 Rail Accessories

| Description | SKU | MSRP | QTY* |
|----------------------|-----------|---------|-------|
| UR-60 Splice, Silver | 242-01270 | \$9.99 | 20 EA |
| UR-60 Splice, Black | 242-01271 | \$10.29 | 20 EA |
| UR-60 End Cap | 232-02484 | \$0.70 | 20 EA |

* QTY (Quantity) listed is the standard package and minimum order quantity. SnapRack products are sold through distribution and may be available as individual units.

† Accepting orders now for standard lead times and shipping will begin late Q4.

Flashing & L Foot Attachments



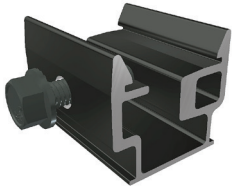
Ultra Rail Umbrella L Foot with Comp Flashing
(Sold Separately)



UR SpeedSeal™ Foot, Black



UR SpeedSeal™ DeckFoot, Black



Ultra Rail Leveling Spacer

Composition Shingle Attachments

| Description | SKU | MSRP | QTY* |
|------------------------------------------------------------------|------------|---------|-------|
| Ultra Rail Umbrella L Foot, Silver | 242-01219 | \$6.30 | 20 EA |
| Ultra Rail Umbrella L Foot, Black | 242-01220 | \$7.04 | 20 EA |
| Comp Flashing, 9" x 12", Black Alum (requires Umbrella Lag) | 232-01375 | \$5.51 | 20 EA |
| Comp Flashing, 9" x 12", Silver Alum (requires Umbrella Lag) | 232-01376 | \$4.57 | 20 EA |
| Comp Flashing, 9" X 12", Black Galvalume (requires Umbrella Lag) | 232-01377 | \$4.73 | 20 EA |
| Umbrella Lag, 4" | 242-92266 | \$1.55 | 20 EA |
| UR SpeedSeal™ Foot, Silver | 242-02163 | \$9.50 | 20 EA |
| UR SpeedSeal™ Foot, Black | 242-02167 | \$10.50 | 20 EA |
| Sealing Washer Lag, 4 1/2", SS | 242-02168 | \$1.25 | 20 EA |
| UR SpeedSeal™ DeckFoot, Silver | 242-02173 | \$13.50 | 20 EA |
| UR SpeedSeal™ DeckFoot, Black | 242-02174 | \$14.75 | 20 EA |
| Sealing Washer Wood Screw, #14 x 2¾", SS | 242-02175 | \$1.00 | 40 EA |
| Sealing Wood Screw, #14 x 2¼", ½ HEX, SS, (80 pack) | 015-30008† | \$60.00 | 1 EA |

Ultra Rail Attachment Components

| Description | SKU | MSRP | QTY* |
|---------------------------------------------|-----------|--------|-------|
| Ultra Rail Leveling Spacer, Black | 242-05161 | \$2.87 | 20 EA |
| Ultra Rail Mounting Hardware, Black | 242-01230 | \$3.85 | 20 EA |
| Ultra Rail Mounting Hardware, Silver | 242-01229 | \$3.55 | 20 EA |
| Ultra Rail All Purpose L Foot (90°), Black | 242-01239 | \$7.04 | 20 EA |
| Ultra Rail All Purpose L Foot (90°), Silver | 242-01223 | \$7.01 | 20 EA |



Note that the fasteners are sold separately from the Composition Shingle Roof Attachments listed above. Required fasteners are as follows:

One (1) Umbrella Lag, 242-92266, is required for each Ultra Rail Umbrella L Foot & Comp Flashing attachment.

One (1) Sealing Washer Lag, 242-02168, is required for each Ultra Rail SpeedSeal™ Foot attachment.

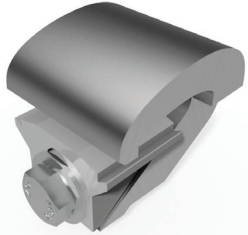
Four (4) Sealing Washer Wood Screws, 242-02175, are required for each Ultra Rail SpeedSeal™ DeckFoot attachment.

SnapNrack Module Attachments - Ultra Rail - S200

Module Clamps are available for all PV module frame sizes (30-46 mm). **Universal End Clamps** are a unique one-size-fits-all that slips inside the module frame – completely out of sight. The rails are cut flush with the modules and finished with SnapNrack End Caps to create a system with a flush, clean line. All Module Clamps work with Ultra Rail and Series 200 Ground Mount. Module Clamps ship pre-assembled, ready to install.



Ultra Rail Mid Clamp,
Black



Universal End Clamp



Ultra Rail End Clamp,
Black

| Mid Clamps | | | |
|------------------------------|-----------|--------|-------|
| Description | SKU | MSRP | QTY* |
| Ultra Rail Mid Clamp, Silver | 242-02070 | \$4.22 | 20 EA |
| Ultra Rail Mid Clamp, Black | 242-02071 | \$4.43 | 20 EA |
| End Clamps | | | |
| Description | SKU | MSRP | QTY* |
| Universal End Clamp | 242-02215 | \$6.28 | 20 EA |
| Ultra Rail End Clamp, Silver | 242-02072 | \$5.77 | 20 EA |
| Ultra Rail End Clamp, Black | 242-02073 | \$6.06 | 20 EA |

* QTY (Quantity) listed is the standard package and minimum order quantity. SnapNrack products are sold through distribution and may be available as individual units.

† Accepting orders now for standard lead times and shipping will begin late Q4.

Tile Roof Solutions



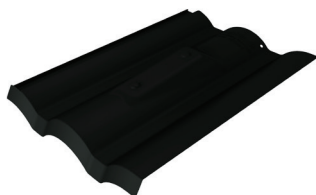
Ultra Rail Tile Roof Hook F



Ultra Rail Adjustable Tile Hook



Tile Hook Replacement Flashing, S



Tile Hook Replacement Flashing, W

Tile Roof Hooks

| Description | SKU | MSRP | QTY* |
|---------------------------------|-----------|---------|-------|
| Ultra Rail Tile Roof Hook F | 242-01247 | \$10.86 | 20 EA |
| Ultra Rail Tile Roof Hook WS | 242-01248 | \$14.20 | 20 EA |
| Ultra Rail Adjustable Tile Hook | 242-02729 | \$14.89 | 10 EA |



Ultra Rail Adjustable Tile is the one Tile Hook for all tile roofs with install compatibility on S/W and Flat tile profiles.

Ultra Rail Tile Roof Hook F is for application on flat tile roofs only. Ultra Rail Tile Roof Hook WS is for application on both W & S Shaped tile roofs.

Ultra Rail Tile Hooks ship pre-assembled with the Ultra Rail Mount.

Tile Hook Replacement Flashing

| Description | SKU | MSRP | QTY* |
|--------------------------------------|-----------|---------|-------|
| Tile Hook Replacement Flashing, Flat | 232-60055 | \$15.93 | 20 EA |
| Tile Hook Replacement Flashing, S | 232-60056 | \$15.93 | 20 EA |
| Tile Hook Replacement Flashing, W | 232-60057 | \$15.93 | 20 EA |



Ultra Rail Tile Hook Replacement Flashings are for Tile Hook installations when necessary to replace broken tiles.

Deck Level Flashing for Tile

| Description | SKU | MSRP | QTY* |
|---------------------------------------------------|-----------|---------|---------|
| PS45 Deck Level Flashing Set, (1) 9x9 & (1) 4X13 | 242-02723 | \$7.98 | 20 Sets |
| PS45 Deck Level Flashing Set, (1) 5X13 & (1) 4X17 | 242-02728 | \$8.98 | 20 Sets |
| Protecto-Tak Spray Adhesive | 131-01347 | \$32.99 | 20 EA |

* QTY (Quantity) listed is the standard package and minimum order quantity. SnapNrack products are sold through distribution and may be available as individual units.

† Accepting orders now for standard lead times and shipping will begin late Q4.

Wire Management Solutions

SnapNrack Wire Management - Ultra Rail - S200

SnapNrack offers the largest set of mounting accessories to enhance the install process. SnapNrack **Wire Management Solutions** comprise a set of dedicated components to reliably and cost-effectively secure PV module and microinverter leads. All components are made of materials which have been selected for their ability to handle high UV exposure and extreme rooftop temperatures common under solar arrays.



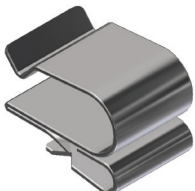
Junction Box XL



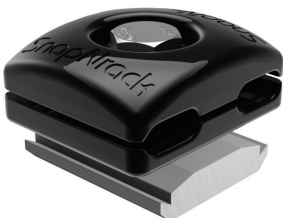
SpeedSeal™ J Box XL



Wire Retention Clip



Smart Clip II



Universal Wire Clamp



Ground Lug R,
6-12 AWG

| Wire & Electronics Management | | | |
|---------------------------------|-----------|---------|---------|
| Description | SKU | MSRP | QTY* |
| Junction Box R for Rail | 242-01104 | \$35.11 | 1 EA |
| Junction Box XL for Rail | 242-92120 | \$47.20 | 1 EA |
| Junction Box XL with Comp Kit | 242-92121 | \$54.95 | 1 Kit |
| SpeedSeal™ J Box XL, Comp Mount | 242-92128 | \$50.00 | 1 EA |
| Universal Wire Clamp for Rail | 242-02150 | \$3.92 | 20 EA |
| Universal Wire Clamp for J Box | 242-09025 | \$4.27 | 1 EA |
| Snap-in Wire Retention Clip | 232-01106 | \$0.47 | 20 EA |
| Smart Clip II | 232-01173 | \$0.44 | 100 EA |
| Smart Clip XL | 232-01176 | \$0.61 | 100 EA |
| MLPE Rail Attachment Kit | 242-92093 | \$2.67 | 20 Kits |
| MLPE Frame Attachment Kit | 242-02151 | \$4.68 | 20 EA |



MLPE Rail Attachment Kit includes over-sized Fender Washer, Channel Nut and serrated Flange Bolt.

| Grounding Solutions | | | |
|------------------------|-----------|--------|-------|
| Description | SKU | MSRP | QTY* |
| Ground Lug R, 6-12 AWG | 242-02101 | \$6.01 | 20 EA |

| Conduit Supports | | | |
|----------------------------------------|-----------|--------|-------|
| Description | SKU | MSRP | QTY* |
| SpeedSeal™ Conduit Mount Kit, 3/4" EMT | 242-05164 | \$9.10 | 20 EA |
| SpeedSeal™ Conduit Mount Kit, 1" EMT | 242-05165 | \$9.91 | 20 EA |
| Conduit Support Assembly, 3/4" EMT | 242-02730 | \$5.70 | 20 EA |
| Conduit Support Assembly, 1" EMT | 242-02731 | \$6.21 | 20 EA |
| Conduit Support Assembly, 3/4" PVC | 242-02732 | \$5.70 | 20 EA |
| Conduit Support Assembly, 1" PVC | 242-02733 | \$6.21 | 20 EA |
| Conduit Support for Tile, 3/4" EMT | 242-02104 | \$5.70 | 20 EA |
| Conduit Support for Tile, 1" EMT | 242-02108 | \$6.21 | 20 EA |

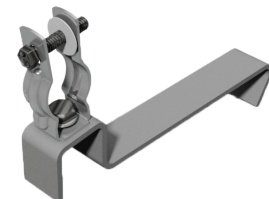
NEW



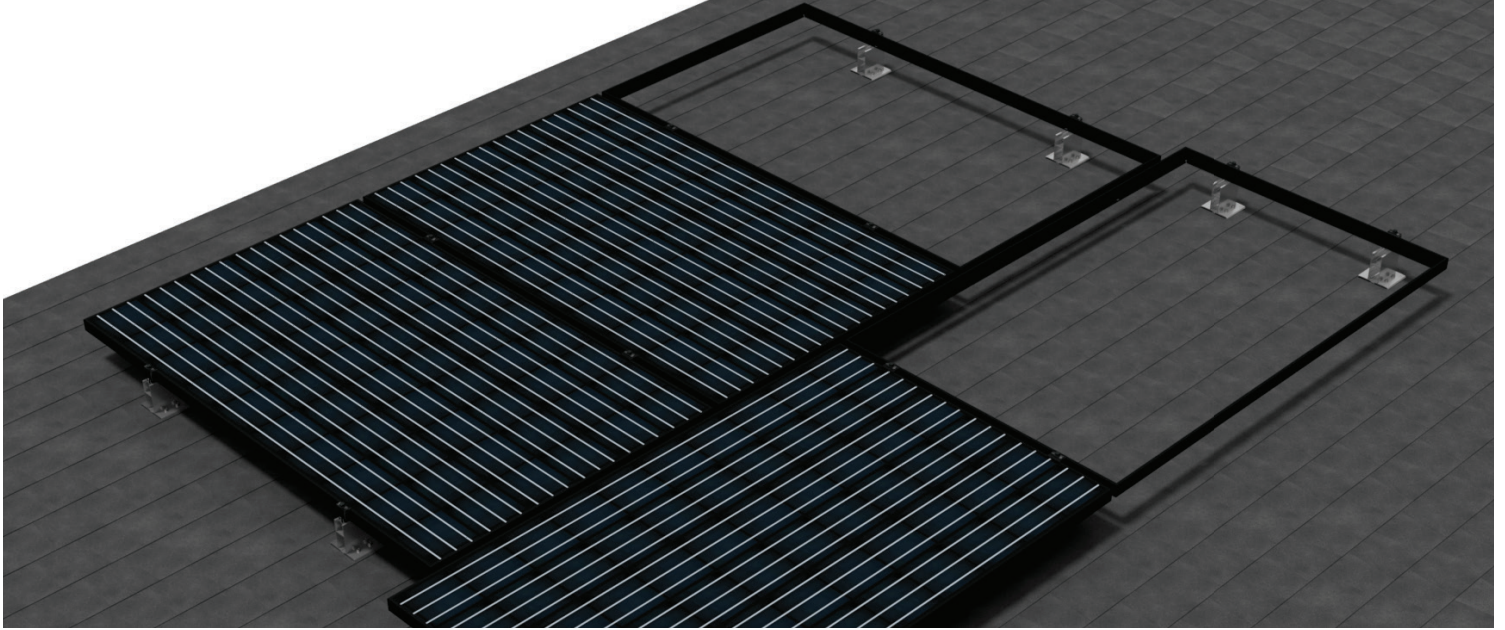
SpeedSeal™ Conduit
Mount Kit, 1" EMT



Conduit Support
3/4" EMT



Conduit Support -
Tile



SnapNrack MightyMount The Simple but Mighty Mounting System

MightyMount System is a modified railless system designed for a smaller footprint and simple install experience on the roof. MightyMount roof attachments are compatible with applications that include composition shingle and trapezoidal metal roofs. The system installs by creating a precise layout for mounts, attaching mounts to the roof, laying down the panels, and securing them utilizing SnapNrack Ultra Rail Mid Clamps and End Clamps. The system includes the familiar SpeedSeal™ Technology with a compressible barrier that secures sealant in place & fills all voids. SnapNrack's tradition of a single tool installation is carried on with the same ½" socket.

- MightyMount Comp-S features a small footprint to fit on a single course of shingles.
- MightyMount Comp-S is a rafter independent attachment, it eliminates the need to locate or find rafters for pilot holes.
- MightyMount Metal-T gives installers the ability to mount on trapezoidal metal roofs like carports.
- MightyMount Metal-T tracks are available in two sizes, 10" or 15", both featuring protective gaskets around fasteners for added sealing and utilizing standard EJOT Fasteners for installation.

More Info

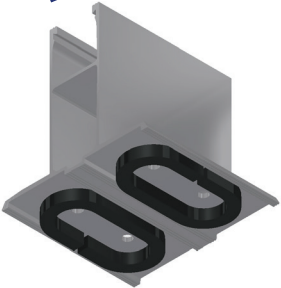
[MightyMount Product Page](#)

Visit Resource Library

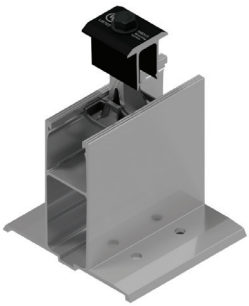
[Download Structural Engineering, Installation Manuals & System Drawings](#)

MightyMount Components

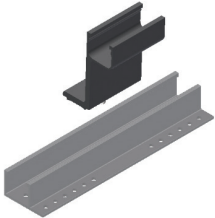
NEW



MightyMount Comp-S



MightyMount Comp-S
+ Ultra Rail Mid Clamp



MightyMount Metal-T
Track + Leg

| MightyMount Comp-S | | | |
|-----------------------------------------------------|------------------------|---------|-------|
| Description | SKU | MSRP | QTY* |
| MightyMount Comp-S | 242-10026 [†] | \$7.50 | 20 EA |
| Sealing Washer Wood Screw, #14 x 2¾", SS | 242-02175 | \$1.00 | 40 EA |
| Sealing Wood Screw, #14 x 2¾", ½ HEX, SS, (80 pack) | 015-30008 [†] | \$60.00 | 1 EA |
| Ultra Rail Mid Clamp, Silver | 242-02070 | \$4.22 | 20 EA |
| Ultra Rail Mid Clamp, Black | 242-02071 | \$4.43 | 20 EA |
| Universal End Clamp | 242-02215 | \$6.28 | 20 EA |
| Ultra Rail End Clamp, Silver | 242-02072 | \$5.77 | 20 EA |
| Ultra Rail End Clamp, Black | 242-02073 | \$6.06 | 20 EA |

| MightyMount Metal-T [†] | | | |
|------------------------------------------|-----------|--------|--------|
| Description | SKU | MSRP | QTY* |
| MightyMount Metal-T Sealing Track, Short | 242-10013 | \$5.65 | 20 EA |
| MightyMount Metal-T Sealing Track, Long | 242-10014 | \$7.75 | 20 EA |
| MightyMount Metal-T Leg Assembly, Short | 242-10008 | \$5.35 | 20 EA |
| MightyMount Metal-T Leg Assembly, Long | 242-10009 | \$6.55 | 20 EA |
| EJOT JF3-2-5,5X25 E16 Metal Sheet Screw | 164-20016 | \$1.12 | 100 EA |

 Please refer to the RL-U Wire Management & Accessories table on page 6 for all compatible MightyMount Comp-S & MightyMount Metal-T Wire Management Solutions.

* QTY (Quantity) listed is the standard package and minimum order quantity. SnapRack products are sold through distribution and may be available as individual units.

[†] Accepting orders now for standard lead times and shipping will begin late Q4.

Tilt System Roof Attachments

| Roof Type | Description | SKU | MSRP | QTY* | |
|------------|-------------------------------------------------------------------------------------|--------------------------------|-----------|---------|-------|
| Foam Roof | Select this SKU Ultra Rail Tilt-Mount Kit, 10" | 242-10020 | \$21.56 | 20 EA | |
| | Plus ONE of these SKUs | Ultra Rail Tilt-Mount Kit, 14" | \$22.50 | 20 EA | |
| | | Ultra Rail Tilt-Mount Kit, 23" | 242-10022 | \$27.05 | 10 EA |
| Metal Roof | Select this SKU Ultra Rail Variable Tilt Hardware Kit for Metal Roof Attachments | 242-92116 | \$31.67 | 20 EA | |
| | Plus ONE of these SKUs | Metal Roof Base | 242-02036 | \$6.27 | 20 EA |
| | | Standard Base Seam Clamp | 242-05000 | \$7.57 | 20 EA |
| | | Wide Base Seam Clamp | 242-05001 | \$8.61 | 20 EA |
| | | Corrugated Straddle Block | 232-02421 | \$3.92 | 20 EA |
| Flat Roof | Select this SKU Ultra Rail Tilt-Mount Kit, 5 1/2" | 242-10019 | \$18.77 | 20 EA | |
| | Plus ONE of these SKUs | Ultra Rail Tilt-Mount Kit, 10" | 242-10020 | \$21.56 | 20 EA |
| | | Ultra Rail Tilt-Mount Kit, 14" | 242-10021 | \$22.50 | 20 EA |
| | | Ultra Rail Tilt-Mount Kit, 23" | 242-10022 | \$27.05 | 10 EA |
| | Ultra Rail Simple Tilt Front Leg 10° (no base) | 242-03217 | \$8.00 | 20 EA | |
| | Ultra Rail Simple Tilt Back Leg 10° Portrait (no base) | 242-03215 | \$12.00 | 20 EA | |
| | Ultra Rail Simple Tilt Back Leg 10° Landscape (no base) | 242-03216 | \$10.00 | 20 EA | |



Ultra Rail Tilt-Mount Kits include include the new **OmniBase**, a Standoff Shaft and Ultra Rail Tilt Clamp (Standoff Clamp, L Foot, and Ultra Rail Mounting Hardware).

Please refer to Ultra Rail Tilt Angle Table (Nominal).

For Foam Roofs, order **Ultra Rail Tilt-Mount Kit, 10"** for front leg and **Ultra Rail Tilt-Mount Kit, 14"** for rear leg to obtain a desired **low fixed tilt (5° - 14°)**. Order **Ultra Rail Tilt-Mount Kit, 10"** for front leg and **Ultra Rail Tilt-Mount Kit, 23"** for rear leg to obtain a desired **high fixed tilt (15° - 28°)**.

Ultra Rail Variable Tilt Hardware Kit for Metal Roof Attachments includes L Feet, Ultra Rail Mounting Hardware, and miscellaneous hardware to complete kit for front and rear legs. Metal roof attachments (without L Foot) and section of Ultra Rail for rear leg are to be ordered separately.

Please refer to Ultra Rail Tilt Angle Table (Nominal) to obtain desired tilt angles for 5° - 30° Fixed Tilt Kit Standoffs with Ultra Rail Tilt Clamps.

Variable Tilt hardware and Simple Tilt hardware *can be* installed with Standoffs and such, they are not approved in SnapNrack Structural Engineering Reports.

Simple Tilt requires 4ft spacing for portrait modules and 2ft spacing for landscape modules between mounts front to rear, and is only available as a direct mount to roof structure.

Ideal for use with E-Curb (pourable penetration sealant), Simple Tilt Attachments are for application on flat roofs only.

Note that Simple Tilt SKUs are referred to in Structural Documentation as Tilt Leg Plus.

Tilt & Standoff Systems



Ultra Rail Tilt-Mount with OmniBase



Ultra Rail OmniBase
(SOLD IN KITS)



Ultra Rail Variable Tilt Hardware Kit for Metal Roof Attachments

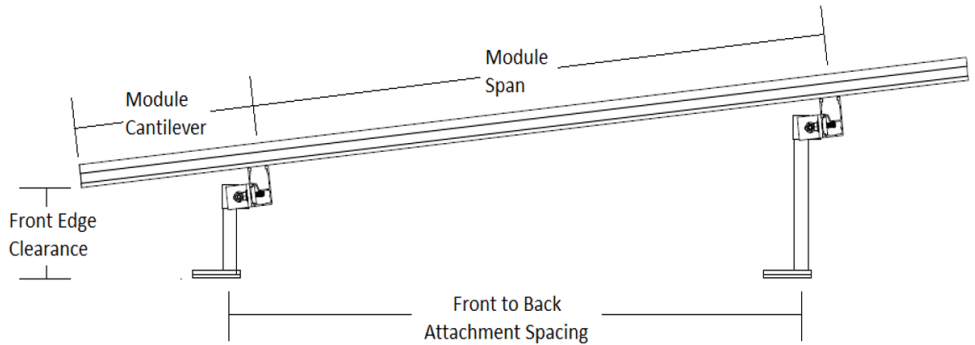
Ultra Rail Tilt Angle Table (Nominal)

5° - 30° Fixed Tilt Kits - Standoffs with Ultra Rail Tilt Clamps

| Front to back attachment spacing | Landscape | | | Portrait | | |
|----------------------------------|------------------------|------------------------|------------------------|------------------------|------------------------|------------------------|
| | 5 1/2" & 10" Standoffs | 5 1/2" & 14" Standoffs | 5 1/2" & 23" Standoffs | 5 1/2" & 10" Standoffs | 5 1/2" & 14" Standoffs | 5 1/2" & 23" Standoffs |
| 16" | 16° | 28° | N/A | N/A | N/A | N/A |
| 24" | 10° | 20° | N/A | N/A | N/A | N/A |
| 32" | 8° | 15° | 28° | 8° | 15° | 28° |
| 48" | N/A | N/A | N/A | 5° | 10° | 20° |

Notes:

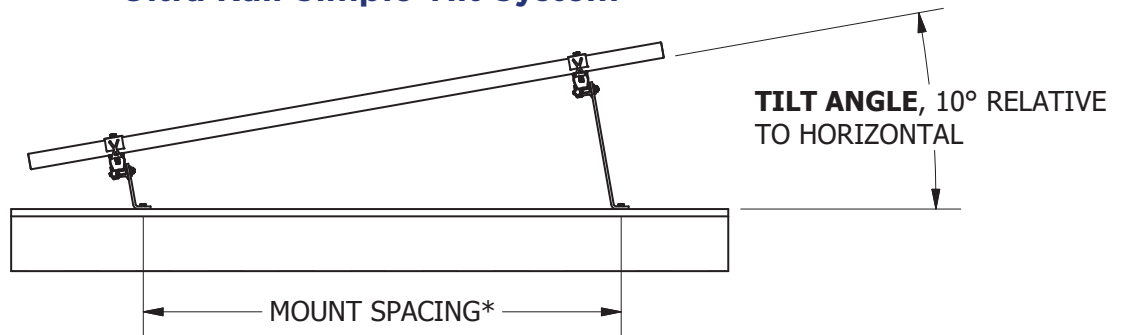
1. Table is based on 60 cell modules
2. Table assumes mounting zone on portrait modules not exceeding 25% of module length
3. Maximum tilt angle allowed = 30° relative to horizontal
4. All tilt ups must have 5-1/2" Standoff in front



Ultra Rail Simple Tilt System



Ultra Rail Simple Tilt Portrait



*4'-0" PORTRAIT
2'-0" LANDSCAPE

* QTY (Quantity) listed is the standard package and minimum order quantity. SnapRack products are sold through distribution and may be available as individual units.



Ultra Rail Metal Roof Base w/ L Foot



Ultra Rail Standard Base Seam Clamp w/ L Foot & Lock



Ultra Rail Flush-Mount Kit, 5 1/2"
Includes new OmniBase



Ultra Rail OmniBase
(SOLD IN KITS)



Rubber Rain Collar

Metal Roof Attachments

| Description | SKU | MSRP | QTY* |
|------------------------------------------------------|-----------|---------|-------|
| Ultra Rail Metal Roof Base w/ L Foot | 242-02158 | \$13.89 | 20 EA |
| Ultra Rail Standard Base Seam Clamp w/ L Foot & Lock | 242-05158 | \$13.57 | 20 EA |
| Ultra Rail Wide Base Seam Clamp w/ L Foot & Lock | 242-05159 | \$14.61 | 20 EA |
| Ultra Rail All Purpose L Foot (90°), Silver | 242-01223 | \$6.68 | 20 EA |
| Ultra Rail Hanger Bolt Clamp | 242-01128 | \$6.53 | 20 EA |
| Corrugated Straddle Block | 232-02421 | \$3.92 | 20 EA |
| Metal Roof Base | 242-02036 | \$7.21 | 20 EA |
| Standard Base Seam Clamp | 242-05000 | \$7.57 | 20 EA |
| Wide Base Seam Clamp | 242-05001 | \$8.61 | 20 EA |

Standoff Mount Roof Attachments

| Description | SKU | MSRP | QTY* |
|------------------------------------|-----------|---------|-------|
| Ultra Rail Flush-Mount Kit, 5 1/2" | 242-10016 | \$16.10 | 20 EA |
| Ultra Rail Flush-Mount Kit, 7" | 242-10017 | \$16.30 | 20 EA |
| Ultra Rail Flush-Mount Kit, 8 1/2" | 242-10018 | \$17.53 | 20 EA |
| Standoff Spacer, 1" | 242-92081 | \$1.66 | 20 EA |

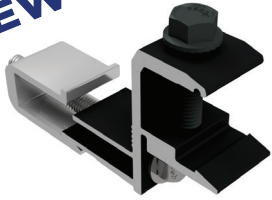


Standoff Mount Roof Attachments are sold in kits which include the new **OmniBase** roof attachment base.

Standoff Mount Roof Accessories

| Description | SKU | MSRP | QTY* |
|---------------------------------------------------------------------------------------|-----------|----------|--------|
| Chem Link E-Curb, 4.5" x 3.5", Gray, Pourable (Pack of 4) | 131-01357 | \$246.84 | 1 Pack |
| Rubber Rain Collar | 232-01000 | \$1.18 | 20 EA |
| Standoff Flashing, Straight Cone for HD Base, 18" X 18" X 4", Galv | 131-01213 | \$18.04 | 12 EA |
| Standoff Flashing, Verde 1.0STF, Skinny Cone for Tile, 20" x 20" x 3", Dead Soft Alum | 175-05001 | \$22.48 | 25 EA |
| Standoff Flashing, Offset Cone for 1-Hole Base, 18 3/4" x 15" x 4", Galv | 131-01216 | \$23.20 | 20 EA |
| Standoff Flashing, Oatey 11830, No Caulk Rubber Cone, 9" x 12 1/2", Galv | 015-00162 | \$12.10 | 12 EA |
| Standoff Flashing, Verde 1.0SSO, Deck Level for 1-Hole Base, 10" x 12" x 1", Galv | 175-05005 | \$9.11 | 25 EA |

NEW



Universal Skirt Frame Mount

| Array Skirt | | | |
|-----------------------------------------------------------------------------|------------|----------|-------|
| Description | SKU | MSRP | QTY* |
| Universal Skirt Frame Mount | 242-10006† | \$8.00 | 20 EA |
| Universal Skirt Cap | 232-10019† | \$2.00 | 20 EA |
| Universal Double Portrait Skirt, 83", Black, (Bundle of 72, priced as each) | 232-02493 | \$52.67 | 72 EA |
| Universal Double Portrait Skirt, 83", Black, (Box of 6) | 015-11792 | \$338.80 | 1 Box |

NEW



Universal Skirt Cap

| Array Edge Screen | | | |
|------------------------------------|-----------|----------|--------|
| Description | SKU | MSRP | QTY* |
| Array Edge Screen, 4" Black (100') | 232-03998 | \$66.80 | 1 EA |
| Array Edge Screen, 6" Black (100') | 232-04077 | \$102.33 | 1 EA |
| Array Edge Screen, 8" Black (100') | 232-04076 | \$137.85 | 1 EA |
| Array Edge Screen Fastener | 242-04105 | \$2.82 | 100 EA |



Array Edge Screen Fastener

| Misc. | | | |
|-----------------------|-----------|---------|-------|
| Description | SKU | MSRP | QTY* |
| Original Channel Nut | 232-02005 | \$1.13 | 20 EA |
| UEC Rail Cutting Tool | 232-02284 | \$14.25 | 20 EA |
| Rail Cover, 48" | 232-01033 | \$10.07 | 20 EA |

* QTY (Quantity) listed is the standard package and minimum order quantity. SnapRack products are sold through distribution and may be available as individual units.

† Accepting orders now for standard lead times and shipping will begin late Q4.



SnapNrack Series 200 **The Adaptable High Quality Solution for Ground Mount Installations**

The Series 200 Ground Mount System is designed to attach easily to a standard 1 ½” galvanized pipe structure using structural pipe fittings. Using a standard three to four-module high assembly, the system is efficient and flexible while optimizing materials and minimizing system footprint. Industry leading installation times are achieved with unique snap-in fasteners.

- Assembles easily using snap-in bonding pipe clamps that connect the rails
- Fully compatible with all SnapNrack module clamps and accessories
- Ground rail channel keeps wires neatly organized providing a clean finished look to every install
- Industry’s largest offering of Wire Management accessories include snap-in Junction Boxes, Universal Wire Clamps, as well as ground rail channel to keep wires neatly organized
- Maximum versatility with the ability to configure easily to desired tilt between 0 and 45 degrees
- Using pipe structural fittings, labor hours to install the system are typically less than required for a more complicated racking system not using standardized components

More Info

[Series 200 Ground Mount Product Page](#)

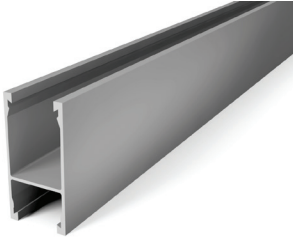
Configuration Tool

Design a system & download a BOM to quote with the online Configuration Tool

Visit Resource Library

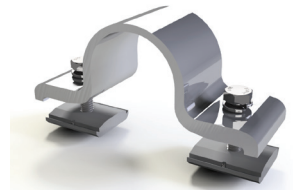
Download Structural Engineering, Installation Manuals & System Drawings

Series 200 Components



Ground Rail

| Series 200 Rail | | | |
|-------------------------------------------|-----------|----------|--------|
| Description | SKU | MSRP | QTY* |
| Ground Rail Set, 172", Silver (Box of 4) | 015-09857 | \$536.82 | 1 Box |
| Ground Rail, 172", Silver (Bundle of 112) | 232-02542 | \$122.29 | 112 EA |
| Ground Rail End Cap | 232-01043 | \$2.87 | 20 EA |
| Ground Rail Splice | 242-04009 | \$16.88 | 20 EA |



Bonding Pipe Clamp



Double Adjustable Socket Tee, Hollaender

| Series 200 Structural Fittings | | | |
|-------------------------------------------------------------------------|-----------|---------|-------|
| Description | SKU | MSRP* | QTY* |
| Bonding Pipe Clamp for 1 1/2" Pipe | 242-09004 | \$7.48 | 20 EA |
| Single Socket Tee, Hollaender (5EXT-8), 1 1/2", AL-MG | 172-05818 | \$33.37 | 1 EA |
| Single Adjustable Socket Tee, Hollaender (17-8), 1 1/2", AL-MG | 172-05803 | \$30.87 | 1 EA |
| Double Adjustable Socket Tee, Hollaender (19E-8), 1 1/2", AL-MG | 172-05804 | \$39.93 | 1 EA |
| Rectangular Base Flange, Hollaender (46-8), 1 1/2", AL-MG | 172-05807 | \$28.70 | 1 EA |
| Plug End, Hollaender (62-8), 1 1/2" Sched 40, AL | 172-05808 | \$7.85 | 1 EA |
| Adjustable Reducing Elbow/Tee, Hollaender (17-98) 2" x 1 1/2", AL-MG | 172-05819 | \$47.50 | 25 EA |
| Adjustable Reduce Cross Assembly, Hollaender (19-98) 2" x 1 1/2", AL-MG | 172-05820 | \$69.47 | 25 EA |
| Reducing Tee, Hollaender (5-89) 1 1/2" x 2", AL-MG | 172-05821 | \$38.11 | 25 EA |

* MSRP from third party manufacturers like Hollaender are subject to change without 30 day notice.

* QTY (Quantity) listed is the standard package and minimum order quantity. SnapNrack products are sold through distribution and may be available as individual units.

Place Your Order

Contact your SnapNrack distributor, which can be found at www.SnapNrack.com/where-to-buy, contact us directly at contact@snapnrack.com, or call us **Toll Free at (877) 732-2860** for technical support.

SnapNrack distributors have trained knowledgeable staff that can provide product design and ordering assistance.

† Availability

Products & SKUS noted with the † are available to order now for standard lead times and shipping will begin late Q4.

MSRP

Prices published in this document are Manufacturer Suggested Retail Prices (MSRP) and should be used for reference only. Prices are subject to change without notice. The quantity (QTY) shown is based on the standard package and is the recommended order quantity.

Warranty

All SnapNrack products are covered by a **25-year limited warranty**. For complete details please view the online SnapNrack's Manufacturers Limited Product Warranty.

SnapNrack®

877-732-2860



www.SnapNrack.com



contact@snapnrack.com