

AN EVALUATIVE AND PREDICTIVE GROWTH
PHASE CAPABILITY-MIX MODEL FOR
R&D LAUNCH VEHICLE PROGRAMS

By

RICHARD MARTIN WYSKIDA

Bachelor of Science
Tri-State College
Angola, Indiana
1960

Master of Science
University of Alabama
University, Alabama
1964

Submitted to the faculty of the
Graduate College of the
Oklahoma State University
in partial fulfillment of
the requirements for
the degree of
DOCTOR OF PHILOSOPHY
July, 1968

JAN 30 1969

AN EVALUATIVE AND PREDICTIVE GROWTH
PHASE CAPABILITY-MIX MODEL FOR
R&D LAUNCH VEHICLE PROGRAMS

Thesis Approved:

W. J. Bentley

Thesis Adviser

Earl J. Ferguson

M. Palmer Tenell

William H. Rambo

D. D. Durham

Dean of the Graduate College

696517

PREFACE

The aerospace corporations have continually experienced organizational restructuring as existing R&D launch vehicle programs are completed, and new ones are initiated. Existing capabilities which support the mature program are inadequate to achieve new program objectives. Therefore, the aerospace corporations are required to establish an embryonic R&D organizational structure which rapidly evolves as the program progresses. This evolution or growth has been characterized by a continually changing technology, and hence, a continually changing organizational capability. It is this changing organizational capability-mix which is the basis for this dissertation.

The analysis of the effort expenditures recorded during the growth phase of selected R&D launch vehicle organizations resulted in an evaluative and predictive growth phase capability-mix model. With this model, future R&D launch vehicle organizations may be staffed more efficiently and effectively during the crucial period known as growth phase.

Indebtedness is acknowledged to the Marshall Space Flight Center for sponsoring my academic program, for providing the necessary documents from which the empirical data was extracted, and finally, for making available

computer facilities which made this research possible.

The author wishes to express his sincere appreciation to the members of his graduate committee: Professor Wilson J. Bentley, Committee Chairman and Head of the School of Industrial Engineering and Management; Dr. Earl J. Ferguson and Dr. M. Palmer Terrell, of the School of Industrial Engineering and Management; and Dr. William W. Rambo, of the Psychology Department.

A debt of gratitude is acknowledged to J. A. Svestka and C. R. Askew who assisted in the translation of my model logic into computer language, and to J. A. Stucker, whose suggestions were of great value.

The author also wishes to express deep appreciation to Miss Charlotte Carroll, for typing the initial draft, and to Mrs. Margaret Estes, who was responsible for the preparation of the final manuscript.

Finally, I would like to express appreciation to my wife, Betty, and son, Alan, whose understanding, encouragement, and sacrifice were instrumental in the preparation of this dissertation.

TABLE OF CONTENTS

Chapter	Page
I. FORMULATION OF THE PROBLEM	1
Introduction	1
History of the Effort Expenditure	
Problem	4
The Research Problem	6
Objectives to be Attained	7
Phases of the Investigation	8
II. MODEL FORMULATION	10
Background	10
System Structure	11
Growth Phase	14
Model Assumptions	16
III. DATA COLLECTION	19
General	19
Data Sources/Constraints	20
The Empirical Data	21
Sample Population Similarity	22
IV. DATA ANALYSIS	34
The Approach	34
Ratio Calculations	35
Establishing Ratio Data Normality	42
Functional Relationship Development	48
Prediction Limits for Individual	
Values	55
V. MODEL VALIDATION AND APPLICATIONS	70
General	70
Testing the Model	71
Interpretation of Acceptability	
Results	79
Prediction with the Model	85
Limiting Values	87

Chapter	Page
VI. CONCLUSIONS AND RECOMMENDATIONS	90
General Remarks and Conclusions	90
Proposals for Future Investigations	92
A SELECTED BIBLIOGRAPHY	94
APPENDIXES	95
Foreword	96
APPENDIX A - COMPUTATIONAL PROCEDURES FOR BASIC MODEL	97
Appendix A-1. Ratio Program	98
Appendix A-2. Chi-Square Program	101
Appendix A-3. Regression-Limit Program	107
Appendix A-4. Transform T-A, T-P Program	114
Appendix A-5. Predictive Value Program	118
APPENDIX B - PREDICTIVE MODEL TABULAR VALUES	121
Appendix B-1. Tabular Values for the E/M Dependent Variable	122
Appendix B-2. Tabular Values for the E/T Dependent Variable	125
Appendix B-3. Tabular Values for the E/Q Dependent Variable	128
Appendix B-4. Tabular Values for the M/T Dependent Variable	131
Appendix B-5. Tabular Values for the M/Q Dependent Variable	134
Appendix B-6. Tabular Values for the Q/T Dependent Variable	137
Appendix B-7. Tabular Values for the E/T Independent Variable	140
Appendix B-8. Tabular Values for the M/Q Independent Variable	143

LIST OF TABLES

Table	Page
I. Program "A" Direct Effort Expenditures . . .	23
II. Program "B" Direct Effort Expenditures . . .	24
III. Program "C" Direct Effort Expenditures . . .	25
IV. Program "D" Direct Effort Expenditures . . .	26
V. Program "F" Direct Effort Expenditures . . .	27
VI. Totals of Growth Phase Direct Effort Expenditures	31
VII. H-Test on Totals of Growth Phase Direct Effort Expenditures	32
VIII. Program "A" Direct Effort Expenditure Ratios	37
IX. Program "B" Direct Effort Expenditure Ratios	38
X. Program "C" Direct Effort Expenditure Ratios	39
XI. Program "D" Direct Effort Expenditure Ratios	40
XII. Program "F" Direct Effort Expenditure Ratios	41
XIII. Normality Test Results for the Original Effort Ratio Distributions	44
XIV. Normality Test Results for the Transformed Effort Ratio Distributions	46
XV. Regression Analysis Original Results . . .	51
XVI. Regression Analysis Final Results	56

Table	Page
XVII. Summary of Dependent and Independent Variable Transformations	57
XVIII. Prediction Intervals for Individual Values of the E/M Effort Ratio Group	63
XIX. Prediction Intervals for Individual Values of the E/T Effort Ratio Group	64
XX. Prediction Intervals for Individual Values of the E/Q Effort Ratio Group	65
XXI. Prediction Intervals for Individual Values of the M/T Effort Ratio Group	66
XXII. Prediction Intervals for Individual Values of the M/Q Effort Ratio Group	67
XXIII. Prediction Intervals for Individual Values of the Q/T Effort Ratio Group	68
XXIV. Program "TEST-P" Direct Effort Expenditures	72
XXV. Program "TEST-A" Direct Effort Expenditures	73
XXVI. Program "TEST-P" Direct Effort Expenditure Ratios	75
XXVII. Program "TEST-A" Direct Effort Expenditure Ratios	76
XXVIII. "TEST-P" Transformed Effort Ratio Values .	77
XXIX. "TEST-A" Transformed Effort Ratio Values .	78
XXX. Acceptability Summary	81
XXXI. Predictive Model Ranges and Increments . .	89

LIST OF FIGURES

Figure	Page
1. Distribution of Effort for a Hypothetical R&D Launch Vehicle Program	15
2. Adjusted 95 Per Cent Prediction Limits for Individual Values of the E/M Effort Ratio Group	62
3. M/T Effort Ratio Values for TEST-P with 90 Per Cent Prediction Limits	80

CHAPTER I

FORMULATION OF THE PROBLEM

Introduction

The statement that "man now stands at the threshold of space" instills the mind with glamorous visions of adventure. However, behind these visions lie a multitude of problems that must be conquered. One of these colossal problems is that of determining the optimum organizational staffing pattern to accomplish this adventure.

Man's pursuit of technological advances has enabled him to realistically attempt space exploration. These same technical advances and complexities have generated much of the difficulty in determining the proper R&D launch vehicle capability-mix which can accomplish the desired objectives in the most efficient manner. As new materials and propulsion systems are developed, so must we develop new approaches to the R&D launch vehicle capability-mix problem.

R&D launch vehicle organizational aspects are many and varied, depending upon specific variables such as organizational type, management, capabilities, and environment, to mention a few. The interrelations between these different variables determine the organizational structure which is most appropriate for a particular situation. This

investigation will be concerned with only one of the above mentioned variables, specifically, the capability-mix which exists at any discrete time during the growth phase of an R&D launch vehicle program.

Barnard (1) defines an organization as a system of consciously coordinated personal activities or forces. This is the achievement of objectives in a collective fashion. It means that the sequences of activity necessary to achieve the objectives are too much for one individual, and thus, are divided into smaller segments which may be accomplished by the individual contributors of the organization. At the individual level these segments may be viewed as roles. At the group level the segments may be viewed as departments. These segments are integrated or organized in a particular sequence or pattern designed to achieve the organizational objectives. The resulting pattern constitutes the organizational structure. Organizations, therefore, have an initial or intended structure which is simply a static picture of the pattern of the segments as planned by management, in order for the contributors to assist in achieving the organizational objectives. This intended or proposed organizational structure is of vital concern when thousands of contributors are involved. The organizations which have evolved in the support of the Apollo Program are typical examples.

In the structuring of organizations to cope with the development of large launch vehicles for the Apollo Program,

certain events are observed as taking place. Primary among these events is a continual change in the capability-mix as the organization evolves. It is this capability-mix, especially during the organization's period of growth, which can cause an organization to ultimately succeed or fail. It may be theorized that the efficiency and effectiveness of an organization are directly related to the changing capability-mix. Hence, knowledge of the proper capability-mix for a specific time period of a program can be extremely beneficial.

When speaking of organizations in a general fashion, the terms growth and size are frequently utilized interchangeably, which can lead to considerable confusion. Since this investigation will consider only the growth phase of R&D launch vehicle programs, overall definitions are desirable. Organizational growth may be defined as an internal process of the organization, which brings about certain directions of development. From a biological point of view, growth has a natural connotation. Penrose (2) describes growth as a process which occurs under "normal" conditions or when nothing restricts or inhibits it. Size is a resultant characteristic of growth. However, it should be noted that other results of growth exist. Size possesses the advantage of being easily observed and measured, and henceforth, receives considerable attention in organizational analysis.

The external conditions for organizational growth are numerous in today's society. Among the most important,

according to Litterer (3), are: the demand for the organization's output; the possibility of obtaining a special opportunity, such as a monopoly through patents or franchise; and the high cost of entry to the field which may keep other organizations from being established to exploit developing demand.

However, organizational growth is not spontaneous. It is the result of management decisions, decisions to increase production in response to demand, decisions to stimulate demand, or decisions to create a demand. The relationships between specific decisions and the ultimate growth of the organization may not be recognizable, but organizational growth is necessarily dependent upon some decisions and the actions which follow them. These decisions are also functions of the goals pursued by the members of the organization. Hence, organizational growth ordinarily takes place when the increased size is viewed positively as related to the achievement of the organization's goals, together with the goals of the individual members of the organization. The difficulty is to achieve organizational growth in the desired effort expenditure categories.

History of the Effort Expenditure Problem

The field of launch vehicle effort expenditures is very lucrative to the researcher. However, prior to plunging into a full scale investigation, it is necessary to isolate the problem areas, specify the constraints to be

imposed upon the investigation, and finally, suggest an alternative approach or technique toward a satisfactory solution of the problem.

A study by Peck and Scherer (4) indicates that ten of eleven R&D launch vehicle programs exceeded original effort expenditure expectations by a factor of 2.2. Although the entire R&D program was considered by Peck and Scherer, it appears that the effort expenditure expectations were the least accurate during the early portions of the program, commonly known as the growth phase. The assumption that a definite problem exists is valid since the growth phase of R&D launch vehicle programs have consistently exceeded their original estimates.

The classical approach in the analysis of R&D launch vehicle effort expenditures is to consider the total R&D program from initiation to completion. The total effort for a specified effort category is then divided by the total launch vehicle weight which was produced during the R&D program. The result is the generally employed hours of effort required for each pound produced. Hence, if the total weight for a proposed program is known, the above process may be reversed and the resulting value is an estimate of the total effort required for a particular effort category, within a certain program. However, the fallacy in this approach is the uncertainty associated with total weight values prior to design completion and the failure to consider other program parameters. Hence, the

usual assumption is that the weight data is normally of such a major concern that reasonably good weights are ordinarily available early in the program. Thus, it is difficult to develop a concrete approach to the estimation problem with a structurally unsound foundation.

The Research Problem

The point of real concern in analyzing data from past R&D launch vehicle programs is not only the total cost, total effort expenditure, or total time elapsed. Even more significant are the relationships which exist between the major categories of effort during incremental time periods of the R&D program. Furthermore, does a pattern appear for these relationships as a function of time, which might be useful for predictive and evaluative purposes?

The proposed investigation will attempt to establish the above mentioned patterns and relationships. Once established, these may serve as a basis to assist in the evaluation of future contractor proposals on R&D launch vehicle programs. Furthermore, it appears that a better method can be developed to lend some validity to the enormous problem of estimating what the capability-mix should be during the various periods of an R&D launch vehicle program. The proposed investigation will not attempt to be all encompassing. Instead, it will concentrate on the most crucial portion of the program, the growth phase. It is theorized at this time that if the proper

capability-mix is achieved during the growth phase of the program, the major obstacles to objective accomplishment will have been achieved. Furthermore, the contractor will be less inclined to over-staff his work force on this particular program, since reduction in effort expenditures would be already under way. The natural tendency for the individuals possessing the desired capabilities is to leave a program which is in the negative slope portion of the effort expenditure curve, and to seek employment on a "going" program. Hence, the capability-mix beyond the growth phase of the program should be easier to control if the proper capability-mix is achieved during the growth phase.

Objectives to be Attained

The major objective of this investigation is to develop a logical, systematic, step-by-step approach for determining the proper capability-mix at a specific point during the growth phase of an R&D launch vehicle program. This objective will be accomplished through the development of a model which represents four growth phase effort expenditure categories through six interdependent ratios.

Another objective is to develop within the model an acceptable range of ratio values associated with specified time intervals of the growth phase. This would permit the use of the model in the evaluation of R&D launch vehicle program contractor proposals.

A third objective is that the model possess the inherent ability to provide estimates or predictions of the effort expenditure ratio for a selected time interval of the growth phase. Attainment of this objective would provide a means for tracking and adjusting the capability-mix once the program is underway.

A fourth objective is that the model permit a retracing of actions at any time in the future. Fulfillment of this objective will assure consistency in all capability-mix estimates, since all elements will have been considered in a similar fashion.

Phases of the Investigation

The first phase of the investigation was a literature survey. This phase served as a period of orientation for the researcher and proved extremely valuable. The results of the literature survey are noted as references within the text. It should be noted that little research has been accomplished with respect to R&D launch vehicle growth phase capability-mix.

The second phase of the investigation was a critical analysis of other techniques utilized in determining effort expenditures to ascertain if any were directly applicable to the situation being studied. In addition to the classical approach, the techniques were of two general classifications. These were the determination of total effort expenditures as a function of total cost when: (a) first R&D unit cost

is known; and, (b) first operational unit cost is available. Once the total effort expenditures are determined, the total is distributed to the various time intervals of the program. However, it is virtually impossible to determine the first R&D unit cost. Hence, this portion of the investigation verified the need for an alternative method. The determination of the capability-mix during the growth phase of R&D launch vehicle programs, may be considered an alternative method. The developed alternative should be readily applicable to the average, space-related R&D launch vehicle program.

The third phase of the research was an investigation of the manpower expenditures for each of four effort categories, during the growth phase of five R&D launch vehicle programs. This data was analyzed and synthesized to formulate an alternative solution to the problem.

The fourth phase of the investigation was the testing of the developed model with a two-part test case, to ascertain whether the objectives of the investigation had been attained. The test case illustrates the evaluative features of the developed model. The fifth and final phase of the investigation illustrates the use of the model as a predictive device.

CHAPTER II

MODEL FORMULATION

Background

The researcher is frequently confronted with the model development problem. Should the model be based upon measurement and experiment, pure mathematics, or a combination of both? The methodology of physical measurements is somewhat easier to comprehend than a pure mathematical approach. Basically, this is because one can repeat a physical experiment many times under controlled conditions and arrive rather easily at an objective measurement, as well as a calculation of the expected experimental error.

In a management environment, it is difficult to simulate an exact situation and to carry out experiments due to many interdependent factors, and the cost involved. Therefore, we must content ourselves with statistical measurements, obtained by observing a number of similar situations. Analysis of these statistics permits the development of functional relationships or theoretical distributions. Starting from such analyses, and proceeding through a synthesis process, a mathematical model may be developed.

Bursk and Chapman (5) describe a model as a simplified

representation of an operation, containing only those aspects which are of primary importance to the problem under study. Manipulating the model itself makes it possible to determine the effects of changes in the system, rather than imposing changes on the modeled entity.

There are several different general types of research models which might be utilized in this investigation. Most of these models are mathematical in form, consisting of a set of equations relating significant programmatic variables in the operation under study, to the outcome. The model to be developed is of this type, being specifically designated as a symbolic model. The primary purpose of this model is to represent the system under study through symbols. The secondary purpose is to aid in the analysis and synthesis of the four effort categories.

System Structure

The analysis and synthesis of the data, and the subsequent development of the model, will depend to a large extent upon the system structure. The structure has been conveniently broken down into workable constituent categories. The following list of effort categories represents in total, all the possible combinations and types of direct labor effort which occur at any one time during the growth phase of an R&D launch vehicle program. Obviously, some very distinct effort categories have been contained within the four categories which follow. However, additional

detail may be added at any time, once the original concept has been developed, tested, and proven. The symbolic notation in parenthesis following each effort category title shall be used throughout the investigation. The effort categories and their respective descriptions are:

1. Engineering (E) - Includes all effort associated with the design and development of the stage, ground test articles, stage support equipment, models, mockups, and component tests.
2. Manufacturing (M) - Supports all effort associated with the fabrication, assembly, in-plant test, system tests, program planning, documentation, and sustaining manufacturing for the stage.
3. Tooling (T) - All effort associated with the design, fabrication, installation, and check-out of the basic tooling, and the sustaining tooling effort.
4. Quality Assurance (Q) - Includes all effort utilized for the quality

inspection and reliability assurance during stage manufacture, test, and acceptance.

Functional relationships will not be developed directly for the engineering, manufacturing, tooling, and quality assurance categories. Instead, six unitless ratios will be developed from the four effort categories given above, where six is the number of combinations of four different things taken two at a time, without regard to the assignment of the things in a group. The resulting ratio groups, together with the symbolic notation, are shown below:

Engineering/Manufacturing	(E/M)
Engineering/Tooling	(E/T)
Engineering/Quality Assurance	(E/Q)
Manufacturing/Tooling	(M/T)
Manufacturing/Quality Assurance	(M/Q)
Quality Assurance/Tooling	(Q/T)

The above six ratio groups are the nucleus of the total model. It is felt that a detailed mathematical analysis of these ratio groups will facilitate the actual development of the total model. Each of these ratio groups will be developed as a functional relationship where the value of the effort ratio will be dependent upon a time value. Algebraically, the dependent variables as a function of the independent variable are:

$$(E/M)_n = f(t)_n$$

$$(E/T)_n = f(t)_n$$

$$(E/Q)_n = f(t)_n$$

$$(M/T)_n = f(t)_n$$

$$(M/Q)_n = f(t)_n$$

$$(Q/T)_n = f(t)_n$$

where

t = a value of time between 0.0 and 1.0, and

n = a selected time value during the growth phase.

Prediction limits will then be developed for individual values of the independent variable. This will permit the use of the model in an evaluative fashion. Substitution of a discrete time value into the developed functional relationships will permit the model to be utilized in a predictive fashion.

Growth Phase

The growth phase is defined as the time beginning with program initiation and continuing until the effort summation for the four effort categories achieves a maximum. It is entirely possible that this maximum point for the total expenditures is beyond the maximum effort expenditure point for at least one of the effort categories. This situation is illustrated in Figure 1 where the engineering effort is shown declining prior to the total peak effort expenditure. Furthermore, it should be noted that the engineering or manufacturing category generally has achieved maximum effort expenditure prior to termination of the growth phase.

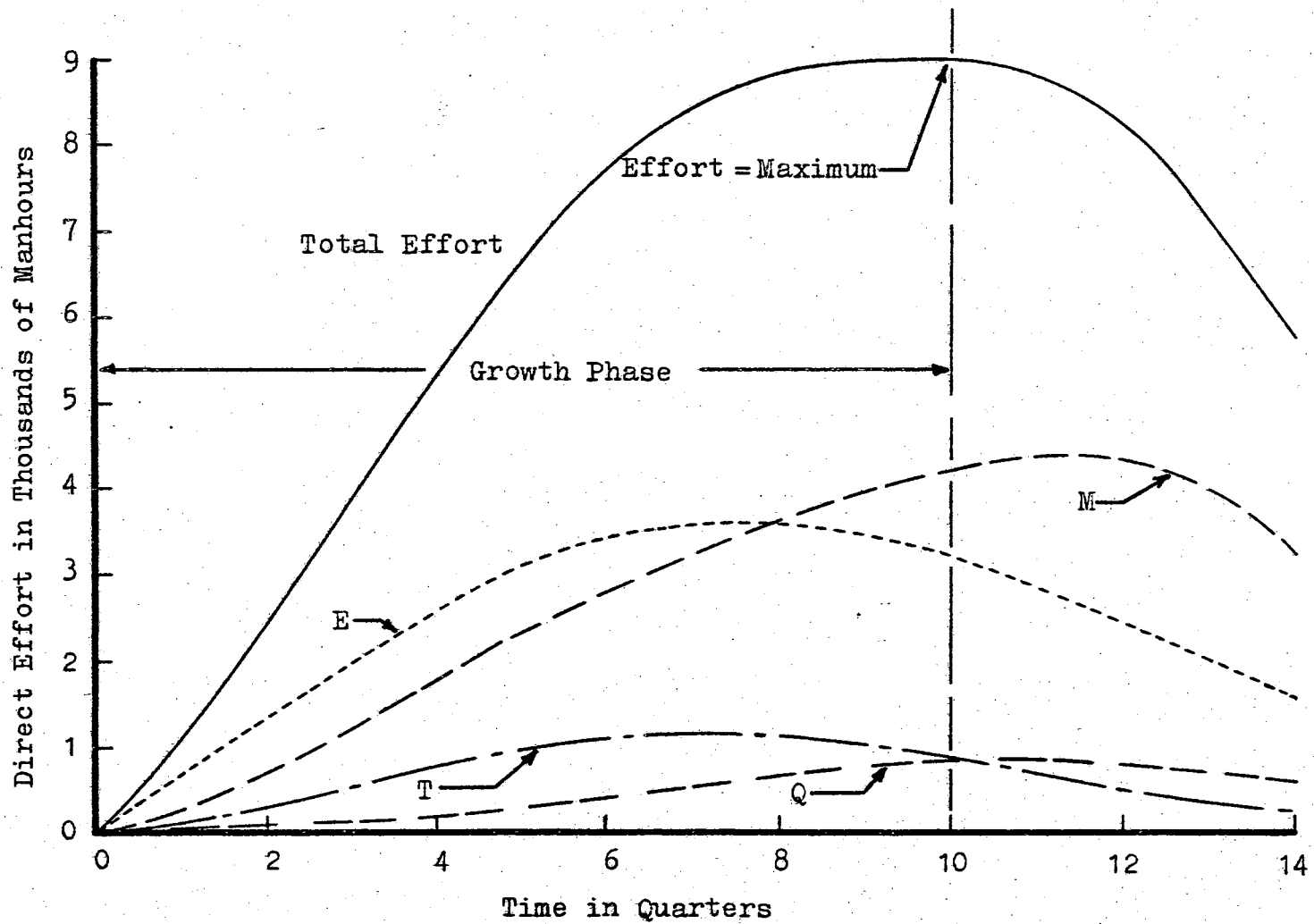


Figure 1. Distribution of Effort for a Hypothetical R&D Launch Vehicle Program

Intuition would cause one to anticipate that manufacturing effort tends to predominate toward the end of an R&D launch vehicle program growth phase. However, it appears that the proper expenditure of engineering effort early in the growth phase causes an earlier decrease in engineering effort during the final quarters of the growth phase.

In an effort to simplify the handling of the independent variable, time, within the defined growth phase, program initiation is assigned a value of 0.0, while the termination of the growth phase is assigned a value of 1.0. Hence, the only possible values of time which are available for the model lie within these bounds.

Model Assumptions

The development of a predictive or evaluative model must, of necessity, be based upon certain general assumptions. The statement of these assumptions is necessary to establish a reasonable bound upon the nebulous areas. The assumptions associated with this investigation are:

1. Empirical information accounts for average delays, average changes, and average effort increases. Therefore, it is not necessary to modify the data to compensate for this aspect.
2. The engineering, manufacturing, tooling, and quality assurance effort categories adequately represent the overall direct effort expenditures for a particular time period.

3. R&D launch vehicle programs receive similar national priority ratings during the growth phase of the program.
4. The contractors are and have been conscientiously and accurately reporting the direct effort hours which occur for their particular program, on the NASA FORM 533 (Contractor Financial Management Report), Budget Bureau No. 104-R011.1, as required by NASA Management Manual 6-2-4.
5. Consideration will be limited to large launch vehicles/stages, $14,000 < \text{Large} < 290,000$, where the unit of the limitation is vehicle/stage dry weight in pounds.
6. Each program must accomplish a similar number of state-of-the-art advances to achieve the program objective.
7. The derived results will be in terms of effort ratios. The model will not, nor is it designed to provide the required effort expenditures for a particular effort category at a specified time.
8. The model considers only the R&D prime contractor direct effort expenditures on the stage, thereby excluding launch effort and any effort expended on operational stages.

The above assumptions narrow the field of investigation to a specific area, yet are flexible enough to permit the development of a feasible and workable growth phase effort

CHAPTER III

DATA COLLECTION

General

The collection of empirical data on launch vehicles is very time-consuming, and in some isolated instances, impossible. The methods in which records of past programs have been maintained are, in many instances, difficult to comprehend. Only a continuing cognizance of government and industry financial management systems permits one to extract the desired information from the mountain of reports available. In general, government agencies are somewhat consistent in record keeping, from the standpoint of providing conversion codes when changing from one method of record maintenance to another. Industry is far from consistent, when comparing one company with several others. Each company has definite peculiar aspects suitable to top management's desires or old line company policies. However, some uniformity among contractor reporting of effort expenditures has been achieved with the development and required use of Budget Bureau Form No. 104-R011.1, as prescribed by NASA Management Manual 6-2-4.

Data Sources/Constraints

The empirical information collected and utilized in this investigation was available directly from within government agencies. Although industry is reluctant to provide empirical data so as not to jeopardize their competitive position, the present financial management arrangements for R&D launch vehicle programs serve this purpose quite adequately.

Since only the growth phase of each program was of interest, it was of the utmost importance that empirical data be available for the early phases of the program. In most cases, this necessitated examining the original letter contract agreement between the government and the contractor, and extracting the appropriate data. Since the phasing-out of the letter contract, and the phasing-in of the prime contract, represent overlapping areas when depicted on a time scale, it was necessary to combine the two sets of effort values to acquire a true representation of the original situation. Furthermore, it was necessary to collect data considerably beyond the maximum point of total effort expenditures to ascertain that the maximum point had been achieved.

The data was available for discrete time periods of three months, or one quarter. Hence, the point of maximum total effort expenditures was recorded in terms of quarters. It should be noted that the number of quarters required to achieve the peak of the growth phase varies between programs,

as would be expected. However, this difference in the number of quarters to growth phase peak is not a problem. The quarter in which the growth phase reaches peak will be represented on the time scale by the value of 1.0. Each other quarter value will then be divided by the value of the original maximum quarter to achieve some positive decimal value less than 1.0.

It should be noted, however, that the actual direct effort data is not presented, nor utilized, in any fashion within the scope of this investigation. Instead, a coding process, which produces no adverse effects and does not distort the empirical data, has been utilized to protect the original data from unnecessary exposure.

For the purpose of this investigation, the collected direct manhour values will serve as the basis for the dependent variables, namely, the various developed ratios. The stability associated with the hour as compared to the monetary aspect, dollars, suggests that manhours will provide more valid results. It is recognized that the various manhours can readily be converted to the monetary unit with little difficulty, if so desired. However, the end result of this investigation is not concerned with any conversion method to arrive at monetary values.

The Empirical Data

The results of the data collection phase of the investigation, together with the imposed constraints and coding

effect, are shown in Tables I through V. In each case, three quarters of effort beyond the growth phase peak are provided to definitely establish the quarter of maximum effort expenditure. The quarter of peak expenditures is designated by an asterisk in the totals column.

It is immediately apparent that only a limited number of R&D launch vehicle systems were considered. However, it must be noted that the universe of R&D launch vehicle programs, which are available for consideration in this investigation, is relatively small. Hence, the sample size is limited. Calculation of an exact value for the sample size is not necessary, since a larger sample size cannot be obtained. In a controlled experiment, the desired sample size is more readily obtainable. However, when dealing with real life situations the desired amount of raw data may be difficult to obtain.

Although the number of R&D programs utilized is small, the manner in which the data is analyzed results in 75 data sets from the five programs. Hence, the sample size is quite adequate when considered in this fashion. This approach to the data analysis phase of the investigation is considered to utilize the available data to the fullest extent possible.

Sample Population Similarity

A common problem in the collection of data is to determine whether several samples should be regarded as

TABLE I
PROGRAM "A" DIRECT EFFORT EXPENDITURES
(Thousands of Manhours)

Qtr.	E	M	T	Q	Totals
1	128.44	148.72	23.65	30.41	331.22
2	253.50	300.82	47.31	59.53	661.16
3	377.90	446.15	68.90	94.63	947.58
4	500.23	598.26	93.33	125.05	1316.87
5	602.94	754.38	114.91	155.48	1627.71
6	726.70	902.45	136.50	189.27	1954.92
7	819.26	1061.32	158.86	219.70	2259.14
8	896.34	1172.86	189.27	244.65	2503.12
9	948.47	1262.04	216.32	260.26	2687.09
10	999.17	1354.07	235.30	270.40	2858.94
11	1049.88	1453.40	260.26	271.70	3035.24
12	1090.43	1537.90	269.10	277.15	3174.58
13	1124.88	1612.26	273.77	288.60	3299.51
14	1153.22	1667.63	280.53	305.50	3406.88
15	1166.10	1730.56	285.22	327.85	3509.73
16	1184.30	1777.87	296.91	358.27	3617.35*
17	1165.45	1715.74	290.68	354.90	3526.77
18	1128.92	1616.29	283.92	348.14	3377.27
19	1087.71	1524.38	276.51	338.00	3226.60

* Denotes growth phase peak.

TABLE II
PROGRAM "B" DIRECT EFFORT EXPENDITURES
(Thousands of Manhours)

Qtr.	E	M	T	Q	Totals
1	685.09	128.70	42.90	26.00	882.69
2	717.59	143.00	58.50	49.40	968.49
3	721.50	211.89	61.09	76.70	1071.18
4	705.90	352.29	150.80	331.50	1540.49
5	937.30	536.90	224.89	261.30	1960.39
6	1071.20	887.90	291.20	257.40	2507.70
7	1010.09	1049.10	301.60	276.90	2637.69
8	1427.40	1353.30	365.29	347.10	3493.09
9	1281.80	2044.90	305.50	426.40	4058.60
10	1514.50	2355.60	352.29	468.00	4690.39
11	1610.69	2468.70	362.70	542.10	4984.19
12	1688.69	2431.00	413.40	542.10	5075.19
13	1764.10	2187.90	386.10	531.70	4869.80
14	2572.70	3053.70	430.29	585.00	6641.69
15	2083.90	3534.70	387.40	692.90	6698.90
16	2314.00	3506.10	416.00	799.50	7035.60*
17	1795.30	3052.40	265.20	824.20	5937.10
18	1740.70	2356.90	367.90	747.50	5213.00
19	1433.90	2548.00	245.70	629.20	4856.80

* Denotes growth phase peak.

TABLE III
PROGRAM "C" DIRECT EFFORT EXPENDITURES
(Thousands of Manhours)

Qtr.	E	M	T	Q	Totals
1	139.36	70.33	38.73	10.92	259.34
2	212.28	81.25	45.50	13.00	352.03
3	568.75	463.70	89.30	26.90	1148.65
4	878.40	509.85	132.60	79.03	1599.88
5	1048.70	675.47	145.86	112.71	1982.74
6	1102.65	858.00	231.52	131.30	2323.47
7	1107.60	1054.82	299.77	155.35	2617.54
8	1229.66	1715.73	205.92	150.80	3302.11
9	1383.71	1909.56	320.19	180.30	3793.76
10	1406.07	2074.27	327.98	223.72	4032.04
11	1437.80	2088.45	238.02	200.45	3964.72
12	1384.50	2444.00	131.30	254.80	4214.60*
13	1160.90	2620.80	93.60	166.40	4041.70
14	1137.50	2592.20	67.60	318.50	4115.80
15	999.70	1775.80	52.00	301.60	3129.10

* Denotes growth phase peak.

TABLE IV
 PROGRAM "D" DIRECT EFFORT EXPENDITURES
 (Thousands of Manhours)

Qtr.	E	M	T	Q	Totals
1	47.31	7.01	11.56	2.07	67.95
2	192.26	28.46	18.20	8.57	247.49
3	361.26	37.44	92.94	13.64	505.28
4	376.86	52.00	97.50	20.80	547.16
5	436.53	98.80	162.50	28.60	726.43
6	520.91	468.00	247.00	39.00	1274.91
7	588.64	435.50	156.00	52.00	1232.14
8	557.95	494.00	162.50	91.00	1305.45
9	522.20	747.50	130.00	84.50	1484.20
10	401.56	845.00	240.50	84.50	1571.56
11	459.94	858.00	234.00	130.00	1681.94
12	830.05	923.00	200.97	156.00	2110.02
13	643.10	838.88	178.75	130.00	1790.73
14	722.80	987.60	190.70	156.00	2057.10
15	930.93	882.95	168.08	188.50	2170.46*
16	658.84	601.90	104.00	165.10	1529.84
17	683.67	658.45	88.40	161.20	1591.72
18	495.95	343.07	71.50	131.30	1041.82

* Denotes growth phase peak.

TABLE V
 PROGRAM "F" DIRECT EFFORT EXPENDITURES
 (Thousands of Manhours)

Qtr.	E	M	T	Q	Totals
1	108.16	16.25	3.90	2.46	130.77
2	216.32	35.36	8.84	5.32	265.84
3	310.96	54.08	16.25	10.01	391.30
4	439.40	108.16	28.60	18.45	594.61
5	567.83	199.42	43.93	27.04	840.22
6	676.00	277.41	81.11	33.80	1068.32
7	811.20	381.94	125.05	60.83	1379.02
8	973.43	473.20	155.48	67.60	1669.71
9	1061.32	517.14	152.10	87.87	1818.43
10	1183.00	550.94	152.10	121.67	2007.71
11	1284.40	574.60	148.72	135.20	2142.92
12	1372.27	605.02	145.33	169.00	2291.62
13	1439.87	645.57	145.33	182.51	2413.28
14	1487.19	686.13	145.33	189.27	2507.92
15	1548.03	753.73	145.33	196.03	2643.12
16	1622.40	807.81	145.33	202.80	2778.34*
17	1541.28	814.58	158.86	202.80	2717.52
18	1480.44	824.72	162.24	202.80	2670.20
19	1426.36	827.84	165.62	202.80	2622.62

*Denotes growth phase peak.

coming from the same population. In this investigation, the question arises as to whether the five R&D launch vehicle programs are derived from the same or similar populations. Almost invariably, samples will differ, and the question is whether the differences signify differences among the populations, or are merely the chance variations to be expected among random samples from the same population. When this problem arises, one tends to assume that the samples are of approximately the same form, in the sense that if they differ it is merely due to shift or translation.

Friedman (6) states that the "method of ranks" can be applied to data classified by two or more criteria to determine whether the factors used as criteria of classification have a significant influence on the variate classified. Stated differently, the "method of ranks" tests the hypothesis that the values of the variate, corresponding to each subdivision by one of the factors, are homogeneous, that is, from the same universe.

The "method of ranks" utilizes information based solely on "order" and makes no use of the quantitative values of the variate as such. For this reason, an assumption need not be made as to the nature of the underlying universe. Since the nature of the underlying universe of R&D launch vehicle programs is unknown at this time, it appears that a non-parametric rank test will provide the necessary information to make a determination of sample population similarity.

The rank test to be utilized for this determination is the Kruskal-Wallis (7) H-Test. The H-Test requires that all the observations be ranked together, that is, to array the N observations in order of magnitude and replace the smallest by one, the next to the smallest by two, and so on, the largest being replaced by N, and then, the sum of the ranks obtained for each sample. The test statistic to be computed, provided there are no ties, is:

$$H = \frac{12}{N(N+1)} \sum_{i=1}^c \frac{R_i^2}{n_i} - 3(N+1)$$

where

c = the number of samples,

n_i = the number of observations in the i th sample,

$N = \sum n_i$, the number of observations in all samples combined, and

R_i = the sum of the ranks in the i th sample.

The null hypothesis associated with the H-Test is that the samples all come from the same or identical populations. Large values of H lead to the rejection of the null hypothesis, while small values lead to acceptance. Since the n_i are not too small, and the samples come from the continuous populations, H is distributed as chi-square, permitting use of readily available tables of chi-square.

To acquire the necessary values for the H-Test, it is necessary to sum the growth phase effort expenditure values, by effort category, for each of the five R&D launch vehicle programs. This results in a 4 x 5 matrix as shown in

Table VI. The values in Table VI are now ranked for all N values, with N = 20, as shown in Table VII.

The necessary mathematical operations, which permit direct substitution in the H-Test equation above, are also shown in Table VII. Substituting the calculated values into the equation results in the following:

$$H_{cal} = \frac{12(2323)}{20(21)} - 3(21) = 3.36 .$$

Entering the chi-square table with $c-1 = 4$ degrees of freedom, with an $\alpha = 0.05$, we note the table value of H is 9.488. Since the calculated H value is less than the table H value, we accept the null hypothesis. We conclude the five R&D launch vehicle programs are not significantly different from one another, and furthermore, are derived from the same population. If the programs are, in fact, from different populations, this difference in population sources is not detectable from the sample data, at the specified value of alpha. Hence, from a statistical point of view, we are confident that the five programs possess similar characteristics and attributes.

Thus, the data collection phase of the investigation resulted in the acquisition of data on five R&D launch vehicle programs, with a growth phase total of 75 observations for each effort category. The nonparametric H-Test resulted in the acceptance of the null hypothesis that the samples were derived from the same population. The chapter which follows initiates the data analysis phase of the

TABLE VI
 TOTALS OF GROWTH PHASE DIRECT EFFORT EXPENDITURES
 (Thousands of Manhours)

Effort Category	Program				
	A	B	C	D	F
E	13021.76	22106.45	11899.48	7592.30	15101.78
M	18780.69	26245.68	13945.43	7704.14	6686.76
T	2950.14	4449.95	2206.69	2291.20	1642.73
Q	3478.54	6214.00	1539.28	1185.18	1509.86

TABLE VII

H-TEST ON TOTALS OF GROWTH PHASE DIRECT EFFORT EXPENDITURES

	Program				
	A	B	C	D	F
	7	9	3	1	2
	8	10	5	6	4
	15	19	14	12	11
	18	20	16	13	17
R	48	58	38	32	34
N	4	4	4	4	4 $\sum n=N=20$
R^2/n	576	841	361	256	289 $\sum (R^2/n)=2323$

CHAPTER IV

DATA ANALYSIS

The Approach

The data analysis phase of any investigation must be thoroughly outlined from initiation through completion if unnecessary computations and operations are to be avoided. Such a procedure would undoubtedly begin with the desired objective and then establish the sequence of basic mathematical and statistical operations necessary to attain this objective. Then the logic and methodology may be fully developed toward the achievement of the overall objective.

Since the desired objective is a predictive and evaluative growth phase model for R&D launch vehicle programs, the logic and rationale shall be developed toward this goal. Functional relationships are considered to depict the change of the capability-mix as a function of time. Since 75 data points are available for each ratio group, with a corresponding time value, it appears that regression analysis or the method of least squares would provide the desired results. The regression equation would serve as a predictive model; the regression equation with applicable prediction limits would serve as the evaluative model.

However, prior to subjecting the data to regression analysis, determination of the underlying distribution for each ratio group is necessary. Regression analysis and the method of least squares assumes the dependent variable data is derived from a population with a normal distribution. Therefore, it will be necessary to perform a normality test in an effort to make this determination.

Essentially the same input is required for both the normality test and the regression analysis. Thus, the four categories of collected empirical data will be converted into this input, namely, six distinct, yet interrelated ratios. The first phase of the data analysis may now be initiated.

Rapid turn-around time and easy manipulation of the data is necessary if a predictive or evaluative technique is to be useful. With this concept in mind, computer programs have been developed and utilized during the data analysis phase of the investigation for those procedures which lend themselves most readily to computer operations.

Ratio Calculations

The collected empirical growth phase data for the four effort categories shown in Tables I through V must now be placed in a fashion which will permit the other phases of the analysis to proceed. In essence, this implies the calculation of the six effort expenditure ratios as a function of time, as defined in Chapter II. The Ratio

Program, described in Appendix A-1, was utilized in making these computations. The resulting effort expenditure ratios, together with the corresponding growth phase time values, for the five considered programs, are shown in Tables VIII through XII. The associated growth phase time values represent the 75 increments of time being considered for the five programs, for each of the six ratio groups.

It should be noted that the magnitudes of these ratios vary considerably between ratio groups. The largest ratio value is observed for the E/Q ratio group, while the smallest ratio value is noted for the Q/T ratio group. These ratios depict the capability-mix which exists or existed during the specified period of time. As an example, an E/M ratio of 6.7 at a time of 0.0666 indicates that during the first quarter of a 15 quarter program, six and seven-tenths hours of engineering effort were expended for each hour of manufacturing effort expended. The interrelationships between the six ratio groups become obvious, since a change in any one of the four basic effort expenditure categories will cause an incremental change in three of the six ratio groups. It becomes immediately evident that indiscriminate basic effort expenditure value changes cannot occur without detection. Furthermore, any attempt to compensate for one change in the basic effort expenditure category, with still another change, will cause at least five ratio values to be involved. Thus, additional constraints are being placed upon the estimator, forcing him to

TABLE VIII

PROGRAM 'A' DIRECT EFFORT EXPENDITURE RATIOS

TIME	E/M	E/T	E/Q	M/T	M/Q	Q/T
0.0625	0.8636	5.4308	4.2236	6.2883	4.8904	1.2858
0.1250	0.8426	5.3582	4.2583	6.3584	5.0532	1.2582
0.1875	0.8470	5.4847	3.9934	6.4753	4.7146	1.3734
0.2500	0.8361	5.3597	4.0002	6.4101	4.7841	1.3398
0.3125	0.7992	5.2470	3.8779	6.5649	4.8519	1.3530
0.3750	0.8052	5.3238	3.8394	6.6113	4.7680	1.3865
0.4375	0.7719	5.1571	3.7289	6.6808	4.8307	1.3829
0.5000	0.7642	4.7357	3.6637	6.1967	4.7940	1.2925
0.5625	0.7515	4.3845	3.6443	5.8341	4.8491	1.2031
0.6250	0.7379	4.2463	3.6951	5.7546	5.0076	1.1491
0.6875	0.7223	4.0339	3.8641	5.5844	5.3492	1.0439
0.7500	0.7090	4.0521	3.9344	5.7149	5.5489	1.0299
0.8125	0.6977	4.1088	3.8977	5.8891	5.5864	1.0541
0.8750	0.6915	4.1108	3.7748	5.9445	5.4586	1.0890
0.9375	0.6738	4.0884	3.5568	6.0674	5.2785	1.1494
1.0000	0.6661	3.9887	3.3056	5.9879	4.9623	1.2066

TABLE IX

PROGRAM 'B' DIRECT EFFORT EXPENDITURE RATIOS

TIME	E/M	E/T	E/Q	M/T	M/Q	Q/T
0.0625	5.3231	15.9694	26.3496	3.0000	4.9499	0.6060
0.1250	5.0181	12.2664	14.5261	2.4444	2.8947	0.8444
0.1875	3.4050	11.8104	9.4067	3.4684	2.7625	1.2555
0.2500	2.0037	4.6810	2.1294	2.3361	1.0627	2.1982
0.3125	1.7457	4.1678	3.5870	2.3873	2.0547	1.1619
0.3750	1.2064	3.6785	4.1616	3.0491	3.4494	0.8839
0.4375	0.9628	3.3491	3.6478	3.4784	3.7887	0.9181
0.5000	1.0547	3.9075	4.1123	3.7047	3.8988	0.9502
0.5625	0.6268	4.1957	3.0060	6.6936	4.7957	1.3957
0.6250	0.6429	4.2990	3.2361	6.6865	5.0333	1.3284
0.6875	0.6524	4.4408	2.9712	6.8064	4.5539	1.4946
0.7500	0.6946	4.0848	3.1150	5.8805	4.4844	1.3113
0.8125	0.8062	4.5690	3.3178	5.6666	4.1149	1.3771
0.8750	0.8424	5.9789	4.3977	7.0968	5.2200	1.3595
0.9375	0.5895	5.3791	3.0075	9.1241	5.1013	1.7885
1.0000	0.6599	5.5625	2.8943	8.4281	4.3853	1.9218

TABLE X

PROGRAM 'C' DIRECT EFFORT EXPENDITURE RATIOS

TIME	E/M	E/T	E/Q	M/T	M/Q	Q/T
0.0833	1.9815	3.5982	12.7619	1.8159	6.4404	0.2819
0.1666	2.6126	4.6654	16.3292	1.7857	6.2500	0.2857
0.2500	1.2265	6.3689	21.1431	5.1926	17.2379	0.3012
0.3333	1.7228	6.6244	11.1147	3.8450	6.4513	0.5960
0.4166	1.5525	7.1897	9.3044	4.6309	5.9929	0.7727
0.5000	1.2851	4.7626	8.3979	3.7059	6.5346	0.5671
0.5833	1.0500	3.6948	7.1297	3.5187	6.7899	0.5182
0.6666	0.7166	5.9715	8.1542	8.3320	11.3775	0.7323
0.7500	0.7246	4.3215	7.6744	5.9638	10.5910	0.5631
0.8333	0.6778	4.2870	6.2849	6.3243	9.2717	0.6821
0.9166	0.6884	6.0406	7.1728	8.7742	10.4188	0.8421
1.0000	0.5664	10.5445	5.4336	18.6138	9.5918	1.9405

TABLE XI

PROGRAM 'D' DIRECT EFFORT EXPENDITURE RATIOS

TIME	E/M	E/T	E/Q	M/T	M/Q	Q/T
0.0666	6.7489	4.0925	22.8550	0.6064	3.3864	0.1790
0.1333	6.7554	10.5637	22.4340	1.5637	3.3208	0.4708
0.2000	9.6490	3.8870	26.4853	0.4028	2.7448	0.1467
0.2666	7.2473	3.8652	18.1182	0.5333	2.5000	0.2133
0.3333	4.4183	2.6863	15.2632	0.6080	3.4545	0.1759
0.4000	1.1130	2.1089	13.3566	1.8947	12.0000	0.1578
0.4666	1.3516	3.7733	11.3199	2.7916	8.3750	0.3333
0.5333	1.1294	3.4335	6.1313	3.0400	5.4285	0.5600
0.6000	0.6985	4.0169	6.1798	5.7500	8.8461	0.6500
0.6666	0.4752	1.6696	4.7521	3.5135	10.0000	0.3513
0.7333	0.5360	1.9655	3.5379	3.6666	6.6000	0.5555
0.8000	0.8992	4.1302	5.3208	4.5927	5.9166	0.7762
0.8666	0.7666	3.5977	4.9469	4.6930	6.4529	0.7272
0.9333	0.7318	3.7902	4.6333	5.1788	6.3307	0.8180
1.0000	1.0543	5.5386	4.9386	5.2531	4.6840	1.1214

TABLE XII

PROGRAM 'F' DIRECT EFFORT EXPENDITURE RATIOS

TIME	E/M	E/T	E/Q	M/T	M/Q	Q/T
0.0625	6.6560	27.7333	43.9674	4.1666	6.6056	0.6307
0.1250	6.1176	24.4705	40.6616	4.0000	6.6466	0.6018
0.1875	5.7500	19.1359	31.0649	3.3280	5.4025	0.6159
0.2500	4.0625	15.3636	23.8157	3.7818	5.8623	0.6451
0.3125	2.8474	12.9257	20.9996	4.5394	7.3750	0.6155
0.3750	2.4368	8.3343	20.0000	3.4201	8.2073	0.4167
0.4375	2.1238	6.4870	13.3355	3.0542	6.2788	0.4864
0.5000	2.0571	6.2608	14.3998	3.0434	7.0000	0.4347
0.5625	2.0522	6.9777	12.0782	3.4000	5.8852	0.5777
0.6250	2.1472	7.7777	9.7230	3.6222	4.5281	0.7999
0.6875	2.2352	8.6363	9.5000	3.8636	4.2500	0.9090
0.7500	2.2681	9.4424	8.1199	4.1630	3.5799	1.1628
0.8125	2.2303	9.9075	7.8892	4.4420	3.5371	1.2558
0.8750	2.1675	10.2331	7.8575	4.7211	3.6251	1.3023
0.9375	2.0538	10.6518	7.8969	5.1863	3.8449	1.3488
1.0000	2.0083	11.1635	8.0000	5.5584	3.9832	1.3954

exercise logic and rationale in arriving at the estimated capability-mix requirements for a proposed program, rather than merely distributing the manpower effort in a haphazard fashion to fulfill a total manpower estimate of some type.

Establishing Ratio Data Normality

The technique to be utilized in the analysis of the collected data is regression analysis, which assumes the sample dependent variable data is derived from a population with a normal distribution. Thus, it is important to determine the distribution from which the sample dependent variable data was obtained. In this investigation, the calculated ratios for the six effort ratio groups are the sample dependent variable data. Each effort ratio group will be analyzed individually, since it is assumed that each effort ratio group will possess a different functional relationship, and therefore may possess a different underlying distribution.

Ostle (8) states that the assumption of independence, or granting normality to the dependent variable data, is a crucial assumption and its importance should not be overlooked. A definite determination as to the validity of the normality assumption should be made if at all possible. If the data is found to be non-normal in nature, it is permissible to apply a transformation, i.e., logarithmic, square root, cosine, exponential, or some other logical function, to cause the dependent variable data distribution

to approach normality. This procedure does not have an adverse effect upon the data, but must be considered when using the regression results for model building purposes.

Bennett and Franklin (9) suggest the use of normal probability graph paper in the testing of moderately large samples ($n > 50$) for non-normality. The size of the dependent variable sample (75) is observed to be sufficiently large to utilize this procedure. However, in the interest of utilizing a more rapid and precise technique, recourse had been made to one of the simplest methods for testing normality, namely, the "Chi Square" test. The grouping of the dependent sample variable data into class intervals is necessary for this procedure to achieve valid results. The "Chi Square" test does not prove normality as such, but gives no reason to suspect the data is non-normal in nature, provided the results are acceptable.

A computer program was developed which performs the ordinary "Chi Square" or "goodness of fit" procedure. A complete description of this computer program together with its precise formulation is given in Appendix A-2. The initial results for the dependent variable data of each effort ratio group, with the data in its original fashion, are shown in Table XIII. It is readily apparent that the original effort ratio distribution for each effort ratio group is non-normal in nature. The calculated value exceeds the table value for each of the six ratio groups by a considerable amount. Hence, the hypothesis of normality is

TABLE XIII

NORMALITY TEST RESULTS FOR THE ORIGINAL
EFFORT RATIO DISTRIBUTIONS

Ratio	χ^2_{cal}	$\chi^2_{table(0.05)}$	d.f.	Hypothesis of Normality
E/M	27.29	3.84	1	Reject
E/T	12.51	5.99	2	Reject
E/Q	9.42	5.99	2	Reject
M/T	9.63	3.84	1	Reject
M/Q	17.41	7.82	3	Reject
Q/T	15.78	7.82	3	Reject

rejected and a transformation of some type becomes necessary.

Scatter diagrams for the original ratio data as a function of time suggest that perhaps a natural logarithmic transformation would cause certain ratio groups to approach normality. However, experience dictates that a simple natural logarithmic transformation may create more problems than it solves. Since the natural logarithm of one is zero, the natural logarithm of a decimal number is a negative value, and the natural logarithm of zero is negative infinity, it was judged best to add unity to each ratio value before the transformation was accomplished. Hence, the first transformation utilized on all ratio groups was the natural logarithm $[Y(I)+1]$, where $Y(I)$ represents the various values of the dependent variable. Table XIV indicates that this transformation was satisfactory for the E/Q and Q/T ratio groups. However, the other ratio groups did not approach normality with the application of the logarithmic transformation.

The square root is a common transformation frequently utilized when transforming data. This particular transformation does not cause any unusual problems within the realm of this investigation since the input ratios are always positive. Thus, the double root aspect need not be considered, since all values of the square root for this investigation are obviously positive. Referring to Table XIV, we note that the M/T ratio group was the only group of the remaining four to approach normality with this

TABLE XIV

NORMALITY TEST RESULTS FOR THE TRANSFORMED
EFFORT RATIO DISTRIBUTIONS

Ratio	Transformation	$\chi^2_{cal.}$	$\chi^2_{table(0.05)}$	d.f.	Hypothesis of Normality
E/M	$\text{SQRT}[Y(I)+2]/Y(I)$	5.76	5.99	2	Accept
E/T	$Y(I)/[Y(I)+1]$	5.15	5.99	2	Accept
E/Q	$\text{LN}[Y(I)+1]$	5.98	5.99	2	Accept
M/T	$\text{SQRT}[Y(I)]$	2.58	5.99	2	Accept
M/Q	$\text{LN}[\text{LN}[Y(I)+1]]$	5.22	5.99	2	Accept
Q/T	$\text{LN}[Y(I)+1]$	4.86	7.82	3	Accept

transformation. A variation of the square root transformation was found applicable for the E/M ratio group. It should be noted that only the numerator of the expression $[Y(I)+2]/Y(I)$ has the square root operation performed upon it. The denominator performs in its true state, as a variable, and has no mathematical operation performed upon it prior to utilization.

Many other transformations were attempted upon the remaining two ratio groups. The E/T ratio group was observed to approach normality with a $Y(I)/[Y(I)+1]$ transformation. The M/Q ratio group was not as simple. After attempting a large number of single operation transformations upon this category without success, a double operation transformation in the form of $LN [LN [Y(I)+1]]$ was attempted. The dependent variable data was observed to approach normality with this transformation.

The dependent variable data was classified into five class intervals for the first five ratio groups, and into six class intervals for the Q/T ratio group during the goodness of fit procedure. Since three degrees of freedom are lost for the estimated parameters, the respective degrees of freedom are shown in Table XIV.

Thus, the hypothesis of normality is found acceptable for each of the ratio groups within the constraints of the specified transformation. Any manipulations with the dependent variable data must now be accomplished with the dependent variable data in its transformed state. An

analysis of regression may now be performed upon the transformed ratio data as a function of time, with reasonable confidence that the data analyzed possesses an underlying distribution which approaches a normal distribution.

Functional Relationship Development

In most physical sciences, relationships are commonly determined through controlled experiments. In the social sciences and in certain physical sciences, like astronomy, controlled experiments may be impossible, or at least very difficult. Relationships must in such cases be discovered by analyzing the data as it becomes available. The tool which was devised to accomplish this is regression analysis. Often, laboratory conditions cannot be set up that will exactly reproduce conditions within a controlled environment. Consequently, the researcher is frequently in the position of the social scientist and astronomer, in that he must take the data as he finds them. Hence, regression analysis is a very useful tool of both management and industrial research.

Regression analysis or the method of least squares fits a line or a curve to a set of sample points such that the sum of the squares of the deviations of the sample points from the fitted line or curve is a minimum. The method of least squares is mathematical and impersonal. Duncan (9) states that if the variations around the regression are random, the method of least squares permits the computation of sampling errors and hence the determination of the

reliability of dependent variable estimates from the fitted line. Furthermore, if the distribution of points around the regression is not only random, but normal in form, then the least squares method gives the maximum likelihood estimate of the universe regression. Hence, lines and curves of regression are commonly estimated from sample data by the method of least squares.

The computer program developed for the regression analysis portion of the investigation solves the normal equations by the least squares method. The program is designed to transform the effort ratio data into the form specified by the normality portion of the investigation. This capability permitted the use of the same input data as utilized with the Chi-square program. The large amount of core storage necessary for the Regression-Limit Program prevented one continuous program from being utilized.

In addition to the regression coefficients, the computer program provides an analysis of regression variance. This analysis partitions the total dependent variable variation into that portion due to the regression upon the independent variable, and that portion attributable to other causes (about the regression or error). The appropriate degrees of freedom are provided together with the mean square values. Thus, the values necessary for an "F" test are readily available.

The null hypothesis associated with the analysis of regression variance "F" test may be stated as follows:

H_0 : $Y(I)$ is independent of $X(I)$,

where

$Y(I)$ represents the effort ratio groups, and

$X(I)$ is the corresponding time value.

The "F" values provided with the regression coefficients will permit the acceptance or rejection of this null hypothesis. If the calculated "F" value is smaller than the appropriate table "F" value, the null hypothesis is accepted; a calculated "F" value larger than the appropriate table "F" value will cause the null hypothesis to be rejected. It is desired that the null hypothesis be rejected, permitting the assumption that $Y(I)$ is dependent upon $X(I)$. This would not prove that $Y(I)$ is dependent upon $X(I)$, but would leave little or no reason to believe the two variables are independent.

Table XV summarizes the regression analysis original results, that is, the dependent variable effort ratio data within the transformation constraints determined by the normality procedure. It is noted that the E/M, E/Q, M/T, and Q/T effort ratio groups reject the established null hypothesis. In fact, the test of the null hypothesis that $Y(I)$ is dependent upon $X(I)$ is clearly significant at the 99 per cent confidence level for these four effort ratio groups. However, the E/T and M/Q effort ratio groups display functional relationships which accept the null hypothesis even at the 95 per cent confidence level. It should be noted that the M/Q effort ratio group rejects the

TABLE XV
REGRESSION ANALYSIS ORIGINAL RESULTS

Ratio	Functional Relationship	$F_{cal.}$	$F_{table(0.05)}$	$F_{table(0.01)}$	Null Hypothesis
E/M	$Y = 0.7721 + 1.5665 X$	38.89		6.99	Reject
E/T	$Y = 0.8584 - 0.0398 X$	2.44	3.97		Accept
E/Q	$Y = 2.7904 - 1.2443 X$	31.37		6.99	Reject
M/T	$Y = 1.5237 + 1.1075 X$	33.59		6.99	Reject
M/Q	$Y = 0.5180 + 0.1367 X$	2.91	3.97		Accept
Q/T	$Y = 0.4342 + 0.3538 X$	15.76		6.99	Reject

null hypothesis when compared with a table $F_{0.10} = 2.77$. However, the E/T effort ratio group continues to accept the null hypothesis even at this confidence level.

Since it is desirable to reject the null hypothesis with at least 95 per cent confidence, one of two approaches immediately present themselves. The first, and perhaps the least desirable, is to eliminate the E/T and M/Q effort ratio groups from the total model. Obviously, this would result in a model which would not be as effective, since two of the six interdependencies would be eliminated. Hence, this approach is immediately rejected. A more feasible solution to the existing problem is to retain these two effort ratio groups within the realm of the overall model. In an effort to acquire functional relationships which reject the established null hypothesis, the independent variable will be studied. An attempt will be made to determine the type of transformation which will convert the originally developed functional relationship into such a fashion which causes rejection of the null hypothesis. Until this point of the investigation, the independent variable has not been transformed in any fashion. Hence, the independent variable has maintained a linear or untransformed condition in the form of input values of time. This linear condition for the independent variable will be maintained for the four effort ratio groups which have rejected the null hypothesis. During the search for a suitable transformation for the respective E/T and M/Q

independent variable, the dependent variable must maintain the transformation constraints which were established previously.

The search for the M/Q independent variable transformation proved more challenging and tedious than any of the prior transformations. After exhausting all known "simple" transformations with little or no success, an attempt was made to utilize double operation transformations similar to the type utilized for the dependent variable of this group. When this failed, the following procedure was utilized to arrive at an acceptable transformation.

$$\text{Let} \quad \ln(y+1) = a^x$$

where

$$y = Y(I),$$

$$x = X(I).$$

But

$$\ln(y+1) = Y'$$

$$Y' = a^x$$

$$\ln Y' = x \ln a$$

$$\ln Y' = Y''$$

where

$$Y'' = b_1 x + b_0 .$$

When

$$b_0 \rightarrow 0,$$

the resulting expression is:

$$\ln a = b_1 .$$

Taking the natural logarithm of both sides gives

$$a = e^{b_1} .$$

Utilizing the developed regression program, the dependent variable was constrained to the transformation $\text{LN}[\text{LN}[Y(I)+1]]$, and the coefficient b_1 was obtained.

Thus,

$$b_1 = 0.1371 \text{ and}$$

$$a = e^{0.1371}.$$

Locating this value in natural logarithm tables we find:

$$a = 1.1469.$$

Substituting in the original equation above, we find:

$$\ln(y+1) = 1.1469^x.$$

However, the constraining transformation on the dependent variable is $\text{LN}[\text{LN}[Y(I)+1]]$. Hence, we must revert to this acceptable dependent variable transformation, and try various combinations of the independent variable transformation developed above. The $X(I)$ values were transformed into the following forms:

(a) a^x where $x = X(I)$

$$a = 1.1469$$

(b) $\frac{x}{a^x}$

(c) $\left[\frac{\frac{x}{a^x}}{\frac{x}{a^x} - 0.5367} \right]$ where 0.5367 approximates \bar{x}

(d) $\left| \frac{\frac{x}{a^x}}{\frac{x}{a^x} - 0.5367} \right|$

(e) $\text{LN} \left| \frac{\frac{x}{a^x}}{\frac{x}{a^x} - 0.5367} \right|$.

Combination (e) resulted in a calculated F value of 4.056, which rejects the null hypothesis at the 95 per cent confidence level. Since considerable manipulation was

required to achieve this F value, it was considered best to cease the search for a transformation which would provide a higher F value. Hence, this independent variable transformation was accepted as is designated in Table XVI.

The search for an independent variable transformation for the E/T effort ratio group was not exceedingly difficult. Referring to Table XVII, we note the transformation to be $\text{SQRT}[X(I) + 0.6]$. With the E/T independent variable within the constraint of this transformation, the null hypothesis is observed as rejected with 99 per cent confidence, as shown in Table XVI.

Referring to Table XVI, we note a summary of the developed functional relationships, together with the appropriate values of F. The M/Q effort ratio group is the sole group which is not acceptable at the 99 per cent confidence level. However, this is not expected to affect the total model in an adverse fashion. We may conclude, with at least 95 per cent confidence, that the effort ratio data varies as a function of growth phase time while within the constraints of the dependent and independent variable transformations summarized in Table XVII.

Prediction Limits for Individual Values

The use of the functional relationships developed in the previous section depends, to a large extent, upon the ease with which an acceptable range of values can be stated for a given value of the independent variable. Since the

TABLE XVI
REGRESSION ANALYSIS FINAL RESULTS

Ratio	Functional Relationship	$F_{cal.}$	$F_{table(0.05)}$	$F_{table(0.01)}$	Null Hypothesis
E/M	$Y = 0.7721 + 1.5665 X$	38.89		6.99	Reject
E/T	$Y = 1.0163 - 0.2973 X$	8.63		6.99	Reject
E/Q	$Y = 2.7904 - 1.2443 X$	31.37		6.99	Reject
M/T	$Y = 1.5237 + 1.1075 X$	33.59		6.99	Reject
M/Q	$Y = 0.5615 + 0.0319 X$	4.06	3.97		Reject
Q/T	$Y = 0.4342 + 0.3538 X$	15.76		6.99	Reject

TABLE XVII
SUMMARY OF DEPENDENT AND INDEPENDENT
VARIABLE TRANSFORMATIONS

Ratio	Dependent Variable Transformation	Independent Variable Transformation
E/M	$\text{SQRT}[Y(I)+2]/Y(I)$	LINEAR
E/T	$Y(I)/[Y(I)+1]$	$\text{SQRT}[X(I)]/[X(I)+0.6]$
E/Q	$\text{LN}[Y(I)+1]$	LINEAR
M/T	$\text{SQRT}[Y(I)]$	LINEAR
M/Q	$\text{LN}[\text{LN}[Y(I)+1]]$	$\text{LN}[\text{ABS}[(x/a^x)/[(x/a^x)-0.5367]]]$
Q/T	$\text{LN}[Y(I)+1]$	LINEAR

values necessary to establish prediction limits for individual values were readily available within the regression computer program, a subroutine entitled "Limit" was developed to be utilized with the Regression Program.

Duncan (9) states that if we use the sample line of regression to estimate a particular value of Y, we must add to the error in the same line of regression some measure of the possible deviation of the individual value from the regression value. Likewise, Ezekiel and Fox (10) define the standard error of an individual forecast as composed of the error of points along the calculated regression line, plus that of individual estimates around that line.

The confidence limits for the regression estimate are given by Bartee (11) as:

$$Y = b_0 + b_1 X_0 \pm \frac{t}{2\alpha} S_e \sqrt{\frac{1}{n} + \frac{(X_0 - \bar{X})^2}{\sum (X_i - \bar{X})^2}}$$

where

b_0 = constant term of the regression equation,

b_1 = coefficient of the independent variable of the regression equation,

X_0 = individual value selected,

t = confidence interval for a two tail test statistic,

S_e = standard error of the estimate,

X_i = an independent variable value, and

\bar{X} = mean of all independent variable values.

Expanding the above

$$Y = b_0 + b_1 X_0 \pm t_{\alpha} \sqrt{\frac{s_e^2}{n} + \frac{s_e^2 (X_0 - \bar{X})^2}{(X_i - \bar{X})^2}}$$

The terms within the radical of the above expression account for the error of points along the calculated regression line.

We must now add the standard error of individual estimates around the regression line, which is designated as S_e .

Adding this term to the previous equation gives:

$$Y = b_0 + b_1 X_0 \pm t_{\alpha} \sqrt{s_e^2 + \frac{s_e^2}{n} + \frac{s_e^2 (X_0 - \bar{X})^2}{(X_i - \bar{X})^2}}$$

Simplifying yields:

$$Y = b_0 + b_1 X_0 \pm t_{\alpha} S_e \sqrt{1 + \frac{1}{n} + \frac{(X_0 - \bar{X})^2}{(X_i - \bar{X})^2}}$$

The relationship with the regression program outputs are as follows:

$$S_e = \sqrt{MS_{\text{about}}}$$

$$\sum (X_i - \bar{X})^2 = \frac{SS_{\text{about}}}{b_1^2}$$

Utilizing the above expression in the Limit Program, prediction loci are developed for the selected individual values. Five different values have been selected for which prediction limits for individual values are calculated. It should be noted that the prediction limits for $Y(I)$ get wider as $X(I)$ deviates from its mean, both positively and

negatively. This means that predictions of the dependent variable are subject to the least error when the independent variable is near its mean, and are subject to the greatest error when the independent variable is distant from its mean.

Prior to the utilization of the computer calculated prediction intervals, a definite rationale must be established which corresponds with the overall objectives. The direct application of prediction limits to the developed functional relationships may cause situations to exist which are not logical. Hence, it is necessary to observe the values of the prediction limits, and then to exercise the necessary judgement to maintain a feasible model. Thus, the acceptable limits to be placed on individual values are based upon experience and judgement. Since the developed model is based upon data which exists within definite bounds, it is desirable to maintain acceptability values within these bounds. Therefore, if a calculated upper or lower predicted limit exceeds the input ratio value for that particular point in time, the predicted limit will be redefined and will assume the value of the extreme input ratio. It should be noted that this will cause the loci of points associated with the prediction limits for individual values to assume a constant value during certain time periods. When the upper or lower prediction limits remain within the extreme ratio values, the prediction limit values will be considered valid. The 95 per cent prediction interval for the E/M ratio group has been selected to

illustrate graphically the effects of the aforementioned adjustments, and is shown in Figure 2. It is noted that the 95 per cent prediction interval, in this case, includes a_1 , a_2 , b_1 , b_2 , and c_2 . The area depicted by c_2 contains non-feasible solutions, since the effort expenditure ratio can never be negative. The b_2 area contains solutions which are below the smallest observed effort expenditure ratio for the E/M category. In a similar fashion, the b_1 area contains solutions which are beyond the upper limit of the empirical data. Hence, the only acceptable solutions for this case are located within areas a_1 and a_2 . Through the adjustment of the prediction limits for individual values non-feasible solutions have been greatly reduced, if not entirely eliminated.

The application of the above rationale to the six effort ratio groups results in adjustment to the prediction loci for individual values in nine of the twelve cases, at the 95 per cent prediction level. These adjustments to the prediction intervals for individual values are shown in a numeric fashion for each effort ratio group and for each of five prediction levels, in Tables XVIII through XXIII.

The $X(I)$ values for which prediction limits have been calculated are the respective $X(I)$ values for the test case, to be illustrated in the next chapter, plus the smallest increment of growth phase time anticipated, namely 0.01. The value 0.01 was selected rather than zero since theoretically, a capability-mix should not exist at time zero

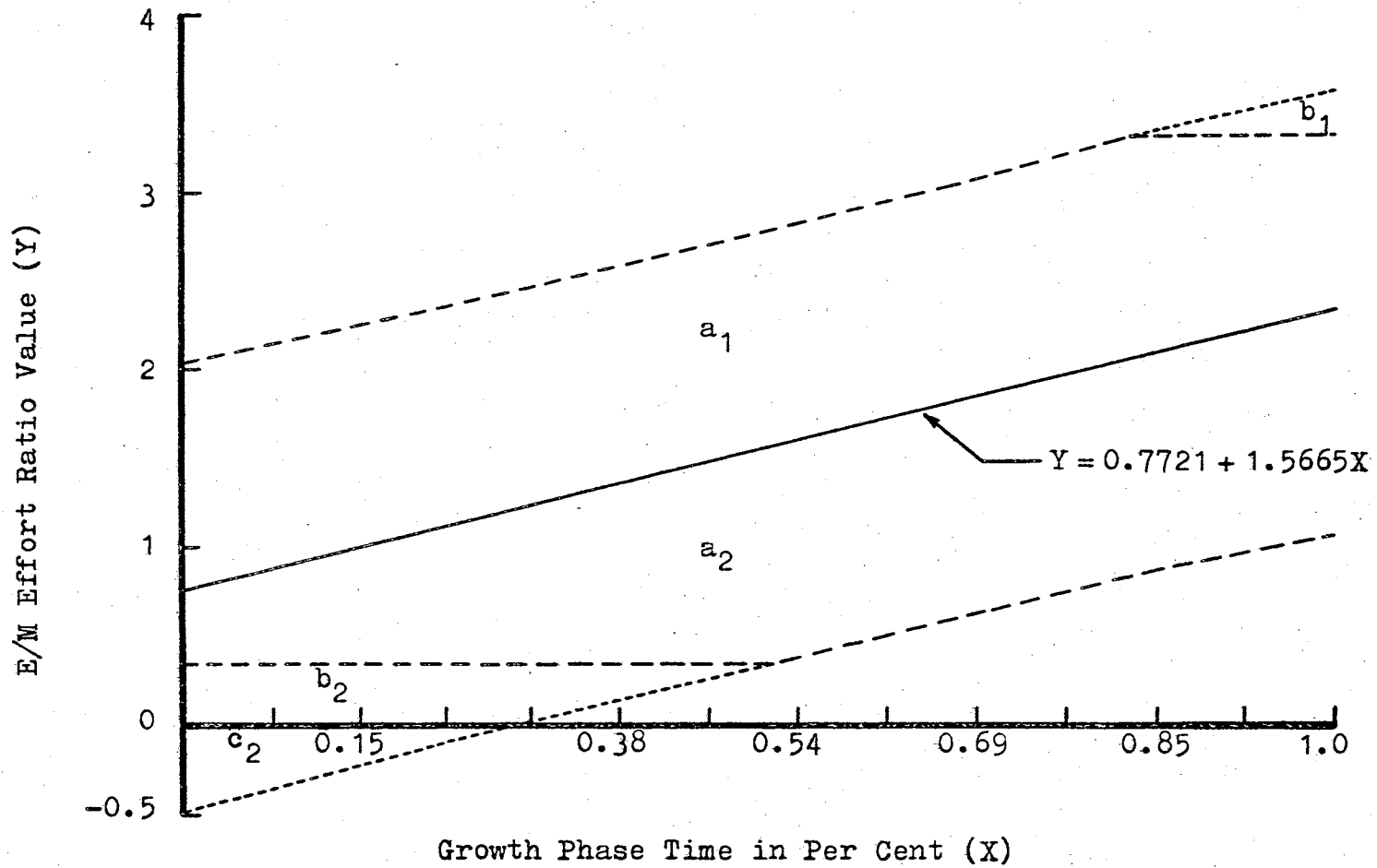


Figure 2. Adjusted 95 Per Cent Prediction Limits for Individual Values of the E/M Effort Ratio Group

TABLE XVIII

PREDICTION INTERVALS FOR INDIVIDUAL VALUES OF THE E/M EFFORT RATIO GROUP

X(I)	LOWER LIMITS IN PERCENT					Y(I)	UPPER LIMITS IN PERCENT				
	99	98	95	90	80		80	90	95	98	99
0.0100	0.3537	0.3537	0.3537	0.3537	0.3537	0.7877	1.6085	1.8409	2.0425	2.2769	2.4369
0.0769	0.3537	0.3537	0.3537	0.3537	0.3537	0.8925	1.7091	1.9403	2.1410	2.3741	2.5334
0.1428	0.3537	0.3537	0.3537	0.3537	0.3537	0.9957	1.8088	2.0390	2.2388	2.4709	2.6295
0.1538	0.3537	0.3537	0.3537	0.3537	0.3537	1.0129	1.8255	2.0555	2.2552	2.4872	2.6456
0.2307	0.3537	0.3537	0.3537	0.3537	0.3537	1.1334	1.9426	2.1717	2.3705	2.6015	2.7593
0.2857	0.3537	0.3537	0.3537	0.3537	0.4123	1.2195	2.0268	2.2554	2.4537	2.6842	2.8416
0.3076	0.3537	0.3537	0.3537	0.3537	0.4473	1.2539	2.0604	2.2888	2.4870	2.7173	2.8746
0.3846	0.3537	0.3537	0.3537	0.3537	0.5697	1.3745	2.1792	2.4071	2.6048	2.8345	2.9914
0.4285	0.3537	0.3537	0.3537	0.4116	0.6392	1.4432	2.2472	2.4749	2.6724	2.9020	3.0588
0.4615	0.3537	0.3537	0.3537	0.4638	0.6913	1.4949	2.2986	2.5261	2.7236	2.9530	3.1097
0.5384	0.3537	0.3537	0.3873	0.5846	0.8121	1.6154	2.4187	2.6461	2.8435	3.0729	3.2295
0.5714	0.3537	0.3537	0.4388	0.6362	0.8637	1.6671	2.4705	2.6980	2.8954	3.1247	3.2814
0.6153	0.3537	0.3537	0.5071	0.7045	0.9321	1.7359	2.5396	2.7672	2.9646	3.1941	3.3107
0.6923	0.3537	0.3961	0.6259	0.8236	1.0515	1.8565	2.6614	2.8893	3.0871	3.3107	3.3107
0.7142	0.3537	0.4295	0.6594	0.8573	1.0854	1.8908	2.6962	2.9242	3.1221	3.3107	3.3107
0.7692	0.3556	0.5130	0.7433	0.9416	1.1701	1.9769	2.7838	3.0123	3.2105	3.3107	3.3107
0.8461	0.4706	0.6285	0.8597	1.0586	1.2878	2.0974	2.9070	3.1362	3.3107	3.3107	3.3107
0.8571	0.4870	0.6449	0.8762	1.0752	1.3046	2.1146	2.9247	3.1540	3.3107	3.3107	3.3107
0.9230	0.5842	0.7427	0.9748	1.1746	1.4048	2.2179	3.0309	3.2611	3.3107	3.3107	3.3107
1.0000	0.6964	0.8557	1.0890	1.2898	1.5212	2.3385	3.1557	3.3107	3.3107	3.3107	3.3107

TABLE XIX

PREDICTION INTERVALS FOR INDIVIDUAL VALUES OF THE E/T EFFORT RATIO GROUP

X(1)	LOWER LIMITS IN PERCENT					Y(1)	UPPER LIMITS IN PERCENT				
	99	98	95	90	80		80	90	95	98	99
0.1428	0.7761	0.7953	0.8234	0.8475	0.8754	0.9738	0.9651	0.9651	0.9651	0.9651	0.9651
0.4096	0.7294	0.7454	0.7688	0.7890	0.8123	0.8945	0.9651	0.9651	0.9651	0.9651	0.9651
0.5087	0.7058	0.7213	0.7439	0.7634	0.7858	0.8650	0.9442	0.9651	0.9651	0.9651	0.9651
0.5202	0.7029	0.7183	0.7408	0.7602	0.7826	0.8616	0.9406	0.9630	0.9651	0.9651	0.9651
0.5782	0.6869	0.7022	0.7246	0.7438	0.7660	0.8443	0.9227	0.9449	0.9641	0.9651	0.9651
0.6034	0.6796	0.6948	0.7172	0.7364	0.7586	0.8368	0.9151	0.9373	0.9565	0.9651	0.9651
0.6110	0.6773	0.6926	0.7149	0.7341	0.7563	0.8346	0.9129	0.9350	0.9543	0.9651	0.9651
0.6250	0.6730	0.6883	0.7107	0.7299	0.7521	0.8304	0.9088	0.9309	0.9502	0.9651	0.9651
0.6298	0.6716	0.6868	0.7092	0.7285	0.7506	0.8290	0.9073	0.9295	0.9488	0.9651	0.9651
0.6308	0.6712	0.6865	0.7089	0.7282	0.7503	0.8287	0.9071	0.9292	0.9485	0.9651	0.9651
0.6353	0.6698	0.6851	0.7075	0.7268	0.7490	0.8274	0.9057	0.9279	0.9472	0.9651	0.9651
0.6360	0.6696	0.6849	0.7073	0.7266	0.7488	0.8272	0.9055	0.9277	0.9470	0.9651	0.9651
0.6364	0.6695	0.6848	0.7072	0.7264	0.7486	0.8270	0.9054	0.9276	0.9469	0.9651	0.9651
0.6399	0.6684	0.6837	0.7061	0.7254	0.7476	0.8260	0.9044	0.9266	0.9459	0.9651	0.9651
0.6405	0.6682	0.6835	0.7059	0.7252	0.7474	0.8258	0.9042	0.9265	0.9457	0.9651	0.9651
0.6430	0.6674	0.6827	0.7051	0.7244	0.7466	0.8251	0.9035	0.9257	0.9450	0.9651	0.9651
0.6438	0.6672	0.6825	0.7049	0.7242	0.7464	0.8248	0.9033	0.9255	0.9448	0.9651	0.9651
0.6445	0.6670	0.6823	0.7047	0.7239	0.7462	0.8246	0.9031	0.9253	0.9446	0.9651	0.9651
0.6453	0.6667	0.6820	0.7044	0.7237	0.7459	0.8244	0.9029	0.9251	0.9444	0.9651	0.9651
0.6464	0.6667	0.6820	0.7044	0.7237	0.7459	0.8244	0.9028	0.9250	0.9443	0.9651	0.9651

TABLE XX

PREDICTION INTERVALS FOR INDIVIDUAL VALUES OF THE E/Q EFFORT RATIO GROUP

X(I)	LOWER LIMITS IN PERCENT					Y(I)	UPPER LIMITS IN PERCENT				
	99	98	95	90	80		80	90	95	98	99
0.0100	1.3192	1.4608	1.6680	1.8464	2.0520	2.7779	3.5039	3.7094	3.8059	3.8059	3.8059
0.0769	1.2433	1.3842	1.5904	1.7679	1.9724	2.6947	3.4170	3.6215	3.7990	3.8059	3.8059
0.1428	1.1677	1.3079	1.5132	1.6899	1.8935	2.6127	3.3318	3.5355	3.7122	3.8059	3.8059
0.1538	1.1549	1.2951	1.5003	1.6768	1.8803	2.5990	3.3177	3.5212	3.6977	3.8059	3.8059
0.2307	1.1408	1.2048	1.4091	1.5850	1.7876	2.5033	3.2190	3.4217	3.5975	3.8018	3.8059
0.2857	1.1408	1.1408	1.3433	1.5187	1.7209	2.4349	3.1489	3.3510	3.5265	3.7303	3.8059
0.3076	1.1408	1.1408	1.3169	1.4922	1.6942	2.4076	3.1210	3.3230	3.4983	3.7020	3.8059
0.3846	1.1408	1.1408	1.2236	1.3985	1.6001	2.3118	3.0236	3.2251	3.4000	3.6032	3.7420
0.4285	1.1408	1.1408	1.1700	1.3447	1.5461	2.2572	2.9683	3.1697	3.3444	3.5474	3.6861
0.4615	1.1408	1.1408	1.1408	1.3041	1.5053	2.2161	2.9269	3.1282	3.3028	3.5058	3.6444
0.5384	1.1408	1.1408	1.1408	1.2088	1.4100	2.1204	2.8309	3.0321	3.2067	3.4095	3.5481
0.5714	1.1408	1.1408	1.1408	1.1676	1.3688	2.0794	2.7900	2.9912	3.1658	3.3686	3.5072
0.6153	1.1408	1.1408	1.1408	1.1408	1.3139	2.0248	2.7356	2.9369	3.1116	3.3145	3.4532
0.6923	1.1408	1.1408	1.1408	1.1408	1.2170	1.9289	2.6409	2.8425	3.0174	3.2207	3.3595
0.7142	1.1408	1.1408	1.1408	1.1408	1.1893	1.9017	2.6141	2.8158	2.9908	3.1942	3.3331
0.7692	1.1408	1.1408	1.1408	1.1408	1.1408	1.8333	2.5469	2.7490	2.9244	3.1281	3.2673
0.8461	1.1408	1.1408	1.1408	1.1408	1.1408	1.7376	2.4536	2.6564	2.8323	3.0368	3.1764
0.8571	1.1408	1.1408	1.1408	1.1408	1.1408	1.7239	2.4403	2.6432	2.8192	3.0238	3.1635
0.9230	1.1408	1.1408	1.1408	1.1408	1.1408	1.6419	2.3610	2.5646	2.7413	2.9466	3.0868
1.0000	1.1408	1.1408	1.1408	1.1408	1.1408	1.5461	2.2689	2.4736	2.6512	2.8575	2.9985

TABLE XXI

PREDICTION INTERVALS FOR INDIVIDUAL VALUES OF THE M/T EFFORT RATIO GROUP

X(I)	LOWER LIMITS IN PERCENT					Y(I)	UPPER LIMITS IN PERCENT				
	99	98	95	90	80		80	90	95	98	99
0.0100	0.6346	0.6346	0.6346	0.7336	0.9104	1.5347	2.1590	2.3358	2.4892	2.6675	2.7892
0.0769	0.6346	0.6346	0.6591	0.8117	0.9876	1.6088	2.2300	2.4059	2.5585	2.7358	2.8570
0.1428	0.6346	0.6346	0.7362	0.8882	1.0633	1.6818	2.3003	2.4754	2.6273	2.8039	2.9245
0.1538	0.6346	0.6346	0.7490	0.9009	1.0759	1.6940	2.3120	2.4870	2.6389	2.8153	2.9359
0.2307	0.6346	0.6624	0.8381	0.9893	1.1636	1.7791	2.3946	2.5689	2.7202	2.8959	3.0159
0.2857	0.6346	0.7260	0.9013	1.0521	1.2260	1.8400	2.4541	2.6279	2.7788	2.9541	3.0739
0.3076	0.6346	0.7511	0.9263	1.0770	1.2508	1.8643	2.4778	2.6515	2.8023	2.9774	3.0971
0.3846	0.7196	0.8390	1.0137	1.1641	1.3375	1.9496	2.5617	2.7350	2.8854	3.0602	3.1795
0.4285	0.7693	0.8886	1.0632	1.2134	1.3866	1.9982	2.6098	2.7829	2.9332	3.1078	3.2271
0.4615	0.8064	0.9256	1.1002	1.2504	1.4234	2.0347	2.6460	2.8191	2.9693	3.1438	3.2630
0.5384	0.8921	1.0113	1.1857	1.3358	1.5089	2.1199	2.7309	2.9039	3.0541	3.2285	3.3477
0.5714	0.9285	1.0477	1.2222	1.3723	1.5453	2.1564	2.7675	2.9406	3.0907	3.2652	3.3844
0.6153	0.9766	1.0958	1.2704	1.4206	1.5937	2.2051	2.8164	2.9895	3.1397	3.3143	3.4335
0.6923	1.0601	1.1795	1.3543	1.5047	1.6781	2.2903	2.9026	3.0760	3.2264	3.4012	3.5206
0.7142	1.0836	1.2031	1.3780	1.5285	1.7020	2.3146	2.9272	3.1007	3.2512	3.4261	3.5456
0.7692	1.1422	1.2619	1.4372	1.5880	1.7617	2.3755	2.9893	3.1630	3.3139	3.4891	3.6088
0.8461	1.2233	1.3434	1.5192	1.6705	1.8448	2.4607	3.0765	3.2508	3.4022	3.5780	3.6981
0.8571	1.2348	1.3549	1.5308	1.6822	1.8567	2.4728	3.0890	3.2635	3.4149	3.5908	3.7109
0.9230	1.3032	1.4238	1.6003	1.7523	1.9274	2.5458	3.1643	3.3394	3.4913	3.6679	3.7885
1.0000	1.3820	1.5032	1.6807	1.8335	2.0095	2.6311	3.2527	3.4288	3.5815	3.7590	3.8802

TABLE XXII

PREDICTION INTERVALS FOR INDIVIDUAL VALUES OF THE M/Q EFFORT RATIO GROUP

X(I)	LOWER LIMITS IN PERCENT					Y(I)	UPPER LIMITS IN PERCENT				
	99	98	95	90	80		80	90	95	98	99
-3.9654	-0.1139	-0.0606	0.0172	0.0843	0.1616	0.4347	0.7078	0.7852	0.8523	0.9302	0.9835
-1.8005	-0.0190	0.0316	0.1059	0.1699	0.2436	0.5039	0.7642	0.8379	0.9019	0.9762	1.0270
-1.0412	0.0108	0.0610	0.1345	0.1978	0.2707	0.5282	0.7856	0.8585	0.9218	0.9953	1.0455
-0.9415	0.0146	0.0648	0.1382	0.2014	0.2742	0.5314	0.7885	0.8613	0.9245	0.9979	1.0481
-0.3372	0.0370	0.0868	0.1598	0.2226	0.2950	0.5507	0.8063	0.8787	0.9415	1.0145	1.0643
0.0475	0.0506	0.1003	0.1731	0.2358	0.3080	0.5630	0.8179	0.8901	0.9528	1.0256	1.0659
0.1985	0.0558	0.1055	0.1783	0.2409	0.3130	0.5678	0.8226	0.8947	0.9573	1.0300	1.0659
0.7528	0.0744	0.1240	0.1966	0.2591	0.3311	0.5855	0.8399	0.9119	0.9744	1.0470	1.0659
0.9559	0.0809	0.1305	0.2031	0.2656	0.3376	0.5920	0.8463	0.9183	0.9808	1.0535	1.0659
1.0784	0.0848	0.1344	0.2070	0.2695	0.3415	0.5959	0.8503	0.9223	0.9848	1.0574	1.0659
1.1139	0.0859	0.1355	0.2081	0.2706	0.3426	0.5970	0.8514	0.9234	0.9859	1.0586	1.0659
1.2181	0.0891	0.1387	0.2114	0.2739	0.3459	0.6004	0.8548	0.9268	0.9893	1.0620	1.0659
1.2459	0.0900	0.1396	0.2122	0.2748	0.3468	0.6012	0.8557	0.9277	0.9902	1.0629	1.0659
1.4317	0.0957	0.1453	0.2180	0.2805	0.3526	0.6072	0.8617	0.9338	0.9964	1.0659	1.0659
1.4930	0.0975	0.1472	0.2199	0.2824	0.3545	0.6091	0.8637	0.9358	0.9984	1.0659	1.0659
1.7646	0.1056	0.1553	0.2281	0.2907	0.3629	0.6178	0.8727	0.9449	1.0076	1.0659	1.0659
1.9132	0.1099	0.1596	0.2325	0.2952	0.3674	0.6226	0.8777	0.9499	1.0126	1.0659	1.0659
2.6147	0.1292	0.1793	0.2526	0.3156	0.3883	0.6450	0.9016	0.9743	1.0374	1.0659	1.0659
2.9761	0.1386	0.1889	0.2625	0.3258	0.3988	0.6565	0.9143	0.9873	1.0506	1.0659	1.0659
4.1483	0.1662	0.2174	0.2924	0.3569	0.4313	0.6940	0.9566	1.0310	1.0659	1.0659	1.0659

TABLE XXIII

PREDICTION INTERVALS FOR INDIVIDUAL VALUES OF THE Q/T EFFORT RATIO GROUP

X(I)	LOWER LIMITS IN PERCENT					Y(I)	UPPER LIMITS IN PERCENT				
	99	98	95	90	80		80	90	95	98	99
0.0100	0.1368	0.1368	0.1368	0.1368	0.1464	0.4377	0.7289	0.8114	0.8830	0.9661	1.0229
0.0769	0.1368	0.1368	0.1368	0.1368	0.1716	0.4614	0.7511	0.8332	0.9044	0.9871	1.0436
0.1428	0.1368	0.1368	0.1368	0.1368	0.1962	0.4847	0.7732	0.8549	0.9258	1.0082	1.0644
0.1538	0.1368	0.1368	0.1368	0.1368	0.2003	0.4886	0.7769	0.8585	0.9294	1.0117	1.0679
0.2307	0.1368	0.1368	0.1368	0.1474	0.2287	0.5158	0.8029	0.8842	0.9548	1.0368	1.0927
0.2857	0.1368	0.1368	0.1368	0.1677	0.2488	0.5353	0.8217	0.9028	0.9732	1.0550	1.1108
0.3076	0.1368	0.1368	0.1368	0.1758	0.2568	0.5430	0.8292	0.9102	0.9806	1.0623	1.1181
0.3846	0.1368	0.1368	0.1368	0.2038	0.2847	0.5702	0.8558	0.9367	1.0068	1.0883	1.1440
0.4285	0.1368	0.1368	0.1496	0.2197	0.3005	0.5858	0.8711	0.9519	1.0220	1.1034	1.1590
0.4615	0.1368	0.1368	0.1615	0.2316	0.3123	0.5975	0.8826	0.9634	1.0334	1.1148	1.1625
0.5384	0.1368	0.1368	0.1889	0.2589	0.3396	0.6247	0.9097	0.9904	1.0605	1.1418	1.1625
0.5714	0.1368	0.1368	0.2005	0.2706	0.3513	0.6363	0.9214	1.0021	1.0722	1.1536	1.1625
0.6153	0.1368	0.1368	0.2159	0.2859	0.3667	0.6519	0.9371	1.0178	1.0879	1.1625	1.1625
0.6923	0.1368	0.1609	0.2425	0.3126	0.3935	0.6791	0.9648	1.0456	1.1158	1.1625	1.1625
0.7142	0.1368	0.1683	0.2499	0.3202	0.4011	0.6869	0.9727	1.0536	1.1238	1.1625	1.1625
0.7692	0.1368	0.1869	0.2686	0.3390	0.4200	0.7063	0.9927	1.0737	1.1441	1.1625	1.1625
0.8461	0.1563	0.2123	0.2943	0.3649	0.4463	0.7336	1.0208	1.1022	1.1625	1.1625	1.1625
0.8571	0.1599	0.2159	0.2980	0.3686	0.4500	0.7374	1.0249	1.1063	1.1625	1.1625	1.1625
0.9230	0.1811	0.2373	0.3197	0.3906	0.4723	0.7608	1.0493	1.1310	1.1625	1.1625	1.1625
1.0000	0.2053	0.2619	0.3447	0.4159	0.4980	0.7880	1.0780	1.1601	1.1625	1.1625	1.1625

of the growth phase. Hence, a value close to zero provides sufficient capability-mix information as we approach the limiting value of zero.

The data analysis phase of the investigation is now complete. Functional relationships have been developed for the six effort ratio groups as originally stated, together with prediction limits for individual values of the independent variable. The chapter which follows will illustrate the feasibility of the developed model.

CHAPTER V

MODEL VALIDATION AND APPLICATIONS

General

The data analysis portion of the investigation resulted in a functional relationship for each of the effort ratio groups. These results may be utilized in two fashions, first as an evaluative model, and second, as a predictive model. During the model validation portion of the investigation, the results shall be utilized in an evaluative fashion.

A thorough validation of the developed model demands that a test case be readily available which consists of two parts; first, the original contractor proposal for the growth phase of the specified program, and second, the empirical data as it actually occurred for the growth phase of the program. The designation, original contractor proposal, does not refer to the contractor response to a government agency request for quotation on a particular program. Instead, it refers to the proposal prepared by the contractor after the contractor is already expending effort under a letter contract for the particular program.

A comparison between the results of both parts of the test case, after subjecting each part to evaluation by the

developed model, will provide a measure of the model's efficiency at various levels of prediction. The true efficiency of the model cannot be accurately determined until future contractor proposals are evaluated and adjusted within the constraints of the model, and then the actual program results are compared with the adjusted contractor proposal.

The empirical test data associated with the original contractor proposal has been designated "TEST-P", while the actual results for the same program are designated "TEST-A". During the remainder of this investigation, the above designations will hold for the two portions of the test case.

Testing the Model

Any attempt at testing the validity or applicability of the developed model must begin with empirical data in the same fashion as that utilized for the developed model. Hence, the growth phase data associated with TEST-P and TEST-A was collected under the same effort breakdown as previously. The empirical data was then coded in the same fashion as the total model data. This coded empirical data is shown for TEST-P in Table XXIV, while Table XXV presents the coded empirical data for TEST-A.

It is immediately evident that the contractor viewed the original task as considerably less complex than the final results depict. This type of optimism early in a program appears to be prevalent among the launch vehicle

TABLE XXIV
 PROGRAM "TEST-P" DIRECT EFFORT EXPENDITURES
 (Thousands of Manhours)

Qtr.	E	M	T	Q	Totals
1	132.73	260.13	116.47	4.28	513.61
2	250.11	298.35	209.42	5.58	763.46
3	293.92	325.52	285.35	6.76	911.55
4	354.38	432.25	330.72	8.57	1125.92
5	372.84	605.41	179.13	11.43	1168.81
6	509.98	993.06	168.60	24.18	1695.82
7	503.61	1062.88	113.75	29.63	1709.87*
8	441.74	935.35	43.55	24.70	1445.34
9	409.63	571.87	61.36	20.41	1063.27
10	375.18	432.64	30.42	19.76	858.00

* Denotes growth phase peak.

TABLE XXV
PROGRAM "TEST-A" DIRECT EFFORT EXPENDITURES
(Thousands of Manhours)

Qtr.	E	M	T	Q	Totals
1	102.69	16.11	3.90	3.11	125.81
2	486.20	74.75	237.89	14.95	813.79
3	631.80	98.80	364.00	19.50	1114.10
4	782.59	117.12	513.50	50.70	1463.91
5	1085.50	306.80	300.30	68.90	1761.50
6	1565.19	971.09	501.79	149.50	3187.57
7	1807.00	1017.90	594.10	248.30	3667.30
8	1571.69	599.30	609.70	166.40	2947.09
9	1721.19	1090.70	406.90	293.80	3512.59
10	2112.50	1528.80	449.79	336.70	4427.79
11	2336.10	1790.10	440.70	391.29	4958.19
12	2494.70	1826.50	399.10	403.00	5123.30
13	2507.70	1925.30	309.40	412.10	5154.50*
14	2460.90	1723.80	288.60	409.50	4882.80
15	2519.40	1730.30	288.60	430.30	4968.60
16	2346.50	1554.80	169.00	403.00	4473.30

* Denotes growth phase peak.

contractors. However, the original contention still holds, that is, a "proper" capability-mix early in a program will cause this uncalled for optimism to be detected more rapidly, thereby permitting a rapid re-assessment of the existing situation. In most cases, this will entail a slowing-down in the effort build-up for the manufacturing, tooling, and quality areas, while doing detailed "homework" in the critical engineering and design area. The above logic and rationale is in keeping with the developed model.

Processing the coded empirical data for TEST-P and TEST-A through the Ratio Program results in the corresponding ratio values as a function of time, which are shown in Tables XXVI and XXVII, respectively. It is not necessary to conduct a test of normality on the TEST data, since the model constraints have been fully established previously, with the TEST data excluded from consideration. However, it is necessary to transform the effort ratio values given in TABLES XXVI and XXVII into the same form as utilized in the model development. This is accomplished with the aid of the "Transform T-A, T-P" Computer Program, which is described in Appendix A-4. The transformed data for TEST-P and TEST-A is shown in Tables XXVIII and XXIX, respectively. It should be noted that the independent variable for the E/T and M/Q effort ratio groups also required transformation. The independent variable for the E/M, E/Q, M/T, and Q/T effort ratio groups remains in its original state. Hence, the corresponding dependent variable ratio value is shown with

TABLE XXVI

PROGRAM 'TEST-P' DIRECT EFFORT EXPENDITURE RATIOS

TIME	E/M	E/T	E/Q	M/T	M/Q	Q/T
0.1428	0.5102	1.1396	31.0116	2.2334	60.7780	0.0367
0.2857	0.8383	1.1942	44.8225	1.4246	53.4677	0.0266
0.4285	0.9029	1.0300	43.4792	1.1407	48.1538	0.0236
0.5714	0.8198	1.0715	41.3512	1.3069	50.4375	0.0259
0.7142	0.6158	2.0813	32.6194	3.3797	52.9667	0.0638
0.8571	0.5135	3.0247	21.0909	5.8900	41.0694	0.1434
1.0000	0.4738	4.4273	16.9966	9.3439	35.8717	0.2604

TABLE XXVII

PROGRAM 'TEST-A' DIRECT EFFORT EXPENDITURE RATIOS

TIME	E/M	E/T	E/Q	M/T	M/Q	Q/T
0.0769	6.3743	26.3307	33.0192	4.1307	5.1800	0.7974
0.1538	6.5043	2.0438	32.5217	0.3142	5.0000	0.0628
0.2307	6.3947	1.7357	32.4000	0.2714	5.0666	0.0535
0.3076	6.6819	1.5240	15.4357	0.2280	2.3100	0.0987
0.3846	3.5381	3.6147	15.7547	1.0216	4.4528	0.2294
0.4615	1.6117	3.1192	10.4694	1.9352	6.4955	0.2979
0.5384	1.7752	3.0415	7.2774	1.7133	4.0994	0.4179
0.6153	2.6225	2.5778	9.4452	0.9829	3.6015	0.2729
0.6923	1.5780	4.2300	5.8583	2.6805	3.7123	0.7220
0.7692	1.3818	4.6966	6.2741	3.3989	4.5405	0.7485
0.8461	1.3050	5.3008	5.9702	4.0619	4.5748	0.8878
0.9230	1.3658	6.2508	6.1903	4.5765	4.5322	1.0097
1.0000	1.3024	8.1050	6.0851	6.2226	4.6719	1.3319

TABLE XXVIII
 "TEST-P" TRANSFORMED EFFORT RATIO VALUES

X(I)	E/M	E/T	E/Q	M/T	M/Q	Q/T
-1.0412					1.4167	
0.0475					1.3858	
0.1428	3.1053		3.4660	1.4944		0.0360
0.2857	2.0096		3.8247	1.1935		0.0262
0.4285	1.8870		3.7950	1.0680		0.0233
0.5087		0.5326				
0.5714	2.0483		3.7459	1.1431		0.0255
0.6034		0.5442				
0.6250		0.8157				
0.6353		0.7515				
0.6364		0.5073				
0.6430		0.6754				
0.6453		0.5172				
0.7142	2.6264		3.5151	1.8383		0.0618
0.8571	3.0874		3.0951	2.4269		0.1340
0.9559					1.2829	
1.0000	3.3196		2.8901	3.0567		0.2314
1.1139					1.3596	
1.2181					1.3189	
1.7646					1.3833	
4.1483					1.3712	

TABLE XXIX
 "TEST-A" TRANSFORMED EFFORT RATIO VALUES

X(I)	E/M	E/T	E/Q	M/T	M/Q	Q/T
-1.8005					0.5995	
-0.9415					0.5831	
-0.3372					0.5893	
0.0769	0.4539		3.5269	2.0324		0.5863
0.1538	0.4483		3.5121	0.5605		0.0609
0.1985					0.1797	
0.2307	0.4530		3.5085	0.5209		0.0521
0.3076	0.4409		2.7994	0.4774		0.0941
0.3846	0.6651		2.8186	1.0107		0.2065
0.4096		0.9634				
0.4615	1.1791		2.4396	1.3911		0.2607
0.5202		0.6714				
0.5384	1.0945		2.1135	1.3089		0.3491
0.5782		0.6344				
0.6110		0.6038				
0.6153	0.8198		2.3461	0.9914		0.2412
0.6250		0.8901				
0.6298		0.7833				
0.6308		0.8620				
0.6360		0.8412				
0.6399		0.7572				
0.6405		0.8244				
0.6438		0.8087				
0.6445		0.7525				
0.6454		0.7204				
0.6923	1.1987		1.9254	1.6372		0.5434
0.7528					0.5283	
0.7692	1.3308		1.9843	1.8436		0.5587
0.8461	1.3930		1.9416	2.0154		0.6354
0.9230	1.3432		1.9727	2.1392		0.6979
0.9559					0.5513	
1.0000	1.3953		1.9579	2.4945		0.8466
1.0784					0.5368	
1.2459					0.5413	
1.4317					0.7002	
1.4930					0.5377	
1.9132					0.4383	
2.6147					0.4880	
2.9761					0.4229	

the appropriate values of the independent variable in the tables mentioned above.

The TEST-P transformed effort ratio values shall be utilized first in the developed model. Referring to Tables XVIII through XXIII, we may now determine whether the TEST-P values are acceptable, based upon the model criteria. If the TEST-P value lies within the prediction interval, it is acceptable; if outside the prediction interval, it is unacceptable. This procedure is accomplished manually, since the effort required to mechanize the operation is greater than the manual effort required.

Figure 3 portrays in a graphical fashion the results for the M/T effort ratio group at the 90 per cent prediction level. It is immediately noted that only five of the possible seven M/T ratio values given in Table XXVIII lie within the acceptable interval. Hence, based upon the developed model, the TEST-P ratio values are rejected which correspond with X(I) values of 0.4285 and 0.5714.

The TEST-A transformed effort ratio values are tested in a similar fashion. A summary of acceptability is presented in Table XXX for both TEST-P and TEST-A.

Interpretation of Acceptability Results

The acceptability summary presented in Table XXX represents, in an overall fashion, the similarity between the actual effort expenditure ratios and the predicted model limits, shown under TEST-A. The disparity between the

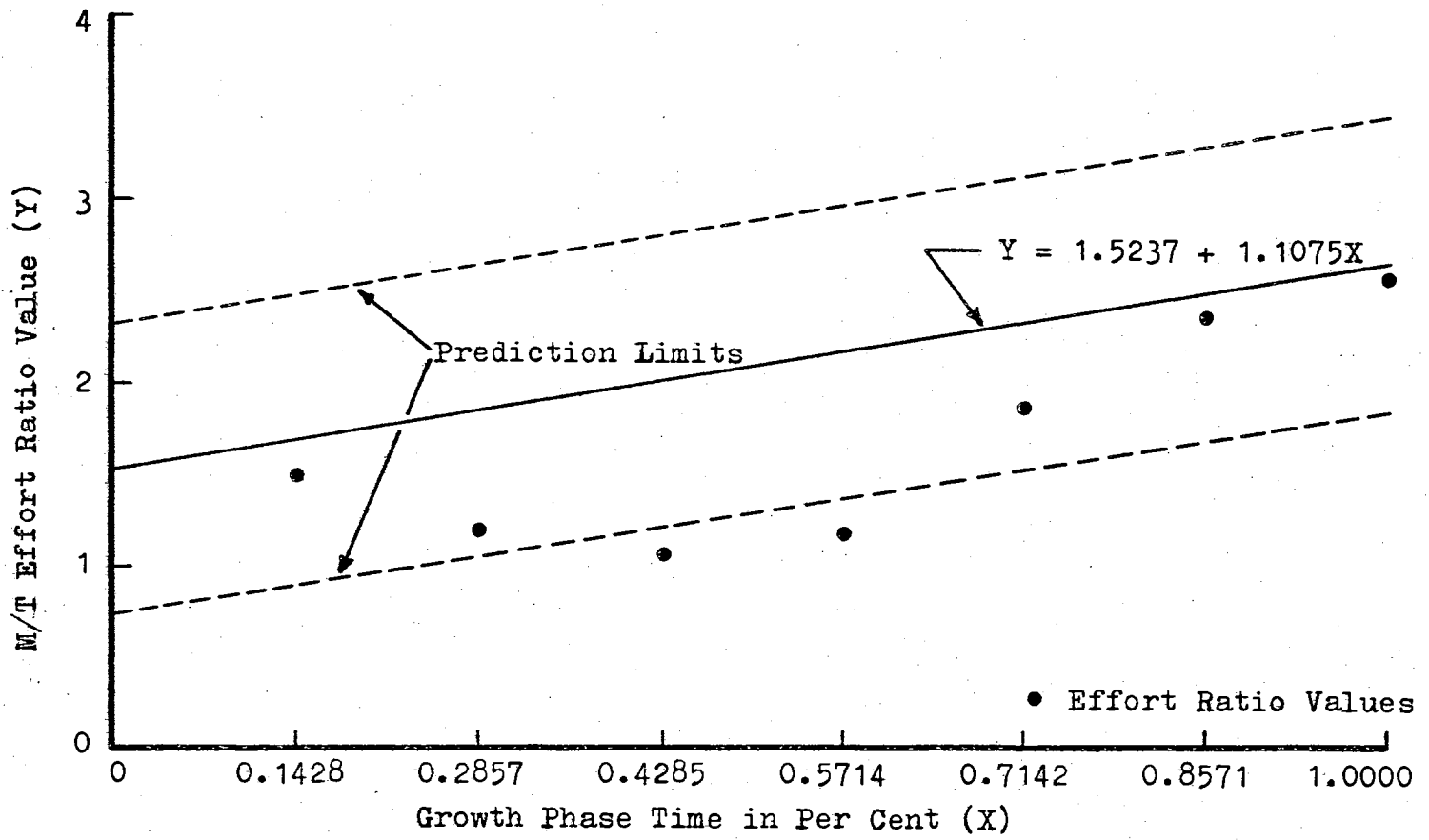


Figure 3. M/T Effort Ratio Values for TEST-P with 90 Per Cent Prediction Limits

TABLE XXX
ACCEPTABILITY SUMMARY

Ratio Group	TEST-P					TEST-A				
	Individual Value Prediction Limits					Individual Value Prediction Limits				
	99%	98%	95%	90%	80%	99%	98%	95%	90%	80%
E/M	5	5	5	5	4	13	13	13	13	9
E/T	3	2	2	2	2	10	10	10	9	9
E/Q	3	1	1	1	0	13	13	13	12	10
M/T	7	7	6	5	4	10	9	8	7	5
M/Q	0	0	0	0	0	13	13	13	12	12
Q/T	1	0	0	0	0	10	10	10	9	7
Totals	19	15	14	13	10	69	68	67	62	52
Per Cent	45.24	35.71	33.33	30.95	23.81	88.46	87.18	85.90	79.49	66.67

contractor proposed effort expenditure ratios and the predicted model results are shown under TEST-P. The integer value located at the intersection of each effort ratio row and prediction limit column represents the number of test values which are acceptable, that is, the test value remained within the model developed prediction limits.

It should be noted that the maximum number of TEST-P values which could lie within the developed prediction limits for any effort ratio group is seven, the same value as the number of proposed quarters of effort for the TEST-P growth phase. The maximum value for the TEST-A portion, considering only the growth phase, is thirteen. Hence, the maximum possible number of test values for the entire growth phase of TEST-P is 42, for all six effort ratio groups. A comparable value for the TEST-A portion is 78. Thus, the overall growth phase for both TEST-P and TEST-A may be best evaluated on a percentage basis. Any comparison, other than percentage of growth phase totals tends to be erroneous, due to the differences in the number of effort ratio values being compared.

Comparing the percentages, at the same prediction level for both TEST-P and TEST-A, it is observed that the model, when used as an evaluative device, is a good approximation of the true situation. The wide disparity between the TEST-P and TEST-A percentages further substantiates this conclusion. Furthermore, the relatively low percentage values for the TEST-P portion suggests that the contractor

had indeed proposed a growth phase capability-mix which was considerably less than optimum.

The reliability with which the developed model approaches the true situation varies with the specified prediction limit. As would be expected, the larger the prediction interval, the larger the number of test values which lie within the interval. However, the model does not achieve the theoretical number of test values expected within the specified interval. Hence, we may conclude that the difference between the achieved percentage and the theoretical percentage may be attributable to sampling error or less than optimum functional relationships. Even with this in mind, the developed model is considered an excellent device for proposal evaluation.

The most desirable prediction interval to be utilized when using the developed model as an evaluative device is a decision which the user must render. For purposes of this investigation, it is noted that the least disparity, between the actual and theoretical number of values contained within a prediction interval, occurs for the 95 per cent prediction interval. Hence, it appears desirable to utilize 95 per cent prediction intervals if only one prediction interval is to be considered. However, the similarity between the theoretical and actual results associated with the 99 per cent, 98 per cent, and 90 per cent prediction intervals are very near the value for 95 per cent. The only prediction interval which may be rather restrictive is the 80 per cent

interval. However, the tight bounds which the 80 per cent interval places upon the individual point being evaluated suggests that the program under consideration should be well-defined and perhaps only requires minor advances in the state-of-the-art. If this is the case, the 80 per cent interval should be considered as the limiting case. Only those individuals well acquainted with the program under consideration can exercise a valid judgement concerning the value of the prediction interval.

When utilizing the developed model as an evaluative device, it is anticipated that the rejection of a contractor proposal on the basis of an unacceptable capability-mix will undoubtedly lead to one question on the contractor's part; namely, how does a contractor achieve an acceptable capability-mix? Since the developed model does not estimate or predict effort expenditures as such, a general response to this query would be to furnish the contractor with the acceptable prediction interval for specified individual values. Thus, the contractor will know the range in which the ratio is permitted to vary and still remain acceptable. Attempting to remain within acceptable effort ratio expenditure intervals may very well cause the contractor to reconsider his total estimate, if the unacceptable ratio values are considerably beyond the acceptable limits. However, it still remains a contractor/government representative judgement as to the total effort expenditure required for the growth phase of a program.

Based upon the ratio group interdependencies which exist, it appears that the acceptance of any three contractor proposed ratio group values for a specified time value would permit the calculation of the remaining ratio group values. This conclusion is valid, only under certain circumstances. Unfortunately, the correct circumstances do not exist within the developed model. The necessary circumstances are that each ratio group possess the same transformation. Likewise, the associated time variate for each ratio group must possess the same transformation, although it may be different than the ratio group transformation. Hence, discretion must be exercised when utilizing the evaluative model, to avoid illogical pitfalls such as the above.

Prediction with the Model

It is frequently desirable to estimate the capability-mix required at some point during the growth phase of a program, once the program is underway. When this situation occurs, the determination of the program time value associated with the growth phase is extremely critical, since the number of quarters of effort required to attain effort expenditure peak may have increased. Thus, care must be exercised to assure that the best estimate of the independent variable is being utilized. It is only then that the developed model can function as a predictive device, and provide results which are meaningful.

The utilization of the developed model as a predictive

device assumes the user has available the growth phase time value for which the estimate is desired. Then, availability of the tabulated values included in Appendix B is desirable, to eliminate the need for detailed mathematical operations relating to transformations. The user has only to substitute the independent variable value into the developed functional relationships for the E/M, E/Q, M/T, and Q/T groups, perform the indicated mathematical operations, and then search for the resulting value in the transformed column of the appropriate table in Appendix B. It should be noted that the data is arranged in rows from left to right in Appendix B. Once the transformed value has been located, or a value near the transformed value, the real or untransformed value immediately to its left is read or secured by interpolation. This is the predicted or estimated value for the effort expenditure ratio in its natural or untransformed state.

The E/T and M/Q groups utilize a slightly different approach in arriving at a predictive value. Since the independent variable for these two groups was also transformed in developing the overall model, it is necessary to follow the same technique in this predictive process. Thus, the independent variable value associated with each of these two groups is located in the untransformed column of the appropriate independent variable tables of Appendix B. The respective transformed independent variable value is located immediately to the right of this value. This transformed

value is then substituted into the respective functional relationship to arrive at some dependent variable value. This value is then located in the appropriate dependent variable tables of Appendix B. The desired value is located immediately to the left of the above located value and represents the predicted capability-mix for the particular effort ratio group, for the selected growth phase time value.

Limiting Values

The tables developed in Appendix B, for use with the model as a predictive device, have been developed with the extreme input effort ratios as the bounding values. Obviously, some bound was necessary to reduce the number of acceptable values. Several of the extreme predicted limit values resulted in solutions which were not feasible. Since it was desired to eliminate these non-feasible solutions, the extreme input ratio values were selected as upper and lower bounds. Hence, each set of ratios, i.e., E/M , will possess its own unique extreme input ratio values. This is essentially the same logic and rationale utilized in Chapter IV in adjusting the prediction limits for individual values. The primary difference between the two methods is the range of interest. In Chapter IV, we were concerned with only twenty discrete values of $X(I)$. Now, we are concerned with every possible value of $X(I)$ within the specified bounds. Since it is impossible to provide every value for the specified bounds, values are provided

for selected increments of X(I) in Appendix B.

The ranges for the six effort ratio groups, together with the incremental value between the untransformed table values, are shown in Table XXXI. It should be noted that the untransformed values and the incremental value for each effort ratio group are the inputs to the Predictive Value Program described in Appendix A. The Predictive Value Program provides the capability to develop exact tables with any degree of sensitivity desired, by simply changing the incremental input value. Hence, Appendix B is only a representative sample of the values which can be generated, and furthermore, are desirable to utilize the developed model in a predictive fashion.

As mentioned earlier in the investigation, the developed model does not estimate or predict the actual effort expenditure required by a particular effort category during a specific time period. Instead, the developed model establishes the relationships which exist for the four effort expenditure categories in the form of six interrelated ratios.

TABLE XXXI
PREDICTIVE MODEL RANGES AND INCREMENTS

Ratio Group	Untransformed Values		Transformed Values		Increment
	Lower	Upper	Lower	Upper	
E/M (Dep.)	0.4752	9.6490	0.3537	3.3101	0.036549
E/T (Dep.)	1.6696	27.7332	0.6254	0.9651	0.103839
E/Q (Dep.)	2.1293	43.9673	1.1408	3.8059	0.166685
M/T (Dep.)	0.4028	18.6137	0.6347	4.3143	0.072553
M/Q (Dep.)	1.0627	17.2378	-0.3229	1.0659	0.064443
Q/T (Dep.)	0.1466	2.1983	0.1368	1.1626	0.008174
E/T (Ind.)	0.1428	0.6464	0.5088	0.6450	0.002006
M/Q (Ind.)	-3.9654	4.1483	-0.1269	0.1385	0.032436

CHAPTER VI

CONCLUSIONS AND RECOMMENDATIONS

The concluding chapter is divided into two principal sections. The first section consists of general remarks and conclusions about the developed model, together with the model applications. The second section proposes possible areas for future investigations concerning the developed model, as well as extensions pertaining to the general topic of growth phase capability-mix.

General Remarks and Conclusions

The ability to determine or evaluate a proposed R&D launch vehicle growth phase capability-mix quickly and with reasonable accuracy, is highly desirable for current aerospace management. The effect of rising manpower costs and curtailed budgets makes this ability even more paramount. This investigation has resulted in a mathematical model which expedites the evaluation and estimation processes, yet is easily manipulated. The ability to reconstruct any evaluations or predictions at any future time is also inherent. As mentioned earlier, little research appears in the literature concerning the capability-mix which should exist for a particular time period of an R&D launch vehicle

growth phase. This investigation has formulated this problem in terms of six effort expenditure ratios derived from the four major effort expenditure categories which exist in an R&D launch vehicle program.

In this dissertation, two distinct applications have been developed as part of an overall capability-mix model. The resulting applications consist of, first, an evaluative model, and second, a predictive model. Both of the resulting applications are based upon functional relationships which have been developed in the overall model. The functional relationships, together with the prediction limits for individual values, provide a baseline for the evaluation of a contractor proposed capability-mix for various time periods of the growth phase of an R&D launch vehicle program. Hence, the designation, evaluative model.

Utilizing the functional relationships, together with the values provided in Appendix B, results in a predicted capability-mix for a particular growth phase time period. Thus, the designation, predictive model.

Two desirable qualities of a model are practicality, and ease of implementation. It is believed that the developed model possesses these qualities since the restrictions and conditions of the model are not considered to be so stringent as to make the model impractical for government or industrial applications. Furthermore, the final decision concerning the evaluative model can be readily understood and easily implemented. Although the

calculations to arrive at a solution in the evaluative model are not difficult, the transformation of several values for use within the model can become quite laborious. Consequently, the use of the Transform T-P, T-A Program is recommended when utilizing the evaluative model. The predictive model requires only the basic mathematical operations, and in some cases, interpolation within the tables of Appendix B, to be implemented.

Proposals for Future Investigations

The model developed through this investigation considers all direct effort expenditures as occurring in one of four effort categories, namely, engineering, manufacturing, tooling, or quality assurance. Future investigations might well be oriented toward the breakdown of the four effort expenditure categories into as many meaningful and factual categories as might become available. For example, test operations appears to be a significant effort expenditure category, but is contained within the manufacturing category in the developed model. The difficulty, of course, is the ability to acquire empirical data in any additional categories which are specified.

With the progression of time, additional R&D launch vehicle programs will have attained the completion of program growth phase. It is recommended that the additional empirical data be integrated with the data provided within this investigation, and a new model be developed. The

entire procedure must be retraced, since additional data will undoubtedly require different transformations to achieve the dual constraint of normality and variable dependence. The new model approach and concept would be identical to that outlined in this investigation. The benefits to be derived from the inclusion of additional growth phase data will more than offset the additional development effort required.

As pointed out in Chapter I, relatively little progress has been made in the mathematical analysis of the R&D launch vehicle growth phase capability-mix problem. It is possible that the application of the concepts presented in this dissertation may result in the solution of other unresolved capability-mix problems. The expenditure of additional research effort in extending the presented concept beyond the growth phase of an R&D launch vehicle program also appears justified at this time.

A SELECTED BIBLIOGRAPHY

1. Barnard, Chester I. The Functions of the Executive. Harvard University Press, Cambridge, Massachusetts: 1964.
2. Penrose, E. T. The Theory of the Growth of the Firm. John Wiley and Sons, New York, N. Y.: 1959.
3. Litterer, J. A. The Analysis of Organizations. John Wiley and Sons, New York, N. Y.: 1965.
4. Peck, Merton J., and Frederic M. Scherer. The Weapons Acquisition Process: An Economic Analysis. Harvard University Press, Cambridge, Massachusetts: 1962.
5. Bursk, Edward C., and John F. Chapman. New Decision-Making Tools for Managers. Harvard University Press, Cambridge, Massachusetts: 1963.
6. Friedman, M. "The Use of Ranks to Avoid the Assumption of Normality Implicit in the Analysis of Variance." Jour. Amer. Stat. Assn., Vol. 32 (1937) 675-701.
7. Kruskal, William H., and W. Allen Wallis. "Use of Ranks in One-Criterion Variance Analysis." Jour. Amer. Stat. Assn., Vol. 47 (1952) 583-621.
8. Ostle, Bernard. Statistics in Research. The Iowa State University Press, Ames, Iowa: 1963.
9. Duncan, Acheson J. Quality Control and Industrial Statistics. Richard D. Irwin, Inc., Homewood, Illinois: 1959.
10. Ezekiel, Mordecai, and Karl A. Fox. Methods of Correlation and Regression Analysis. John Wiley and Sons, New York, N. Y.: 1963.
11. Bartee, Edwin M. Statistical Methods in Engineering Experiments. Merrill Books, Inc., Columbus, Ohio: 1966.

APPENDIXES

FOREWORD

Appendix A contains the computational procedures, together with a brief description of each of the five developed computer programs, utilized in this investigation. The computational procedures were written in FORTRAN IV for the IBM 1130 computing system.

Appendix B consists of eight sets of tabular values utilized with the predictive model. Each of the six dependent variable ratio transformations require one set. Then, one set is required for each of the E/T and M/Q independent variable value transformations.

The computer program descriptions, together with the tabular values of Appendix B, are included as support material for the text and to eliminate redundant research for future investigations.

APPENDIX A

COMPUTATIONAL PROCEDURES FOR BASIC MODEL

APPENDIX A-1

RATIO PROGRAM

RATIO PROGRAM

Program Description

The Ratio Program performs the simple mathematical operation of division for the six desired ratio groups. The present maximum is 25 quarters of empirical data for each of the four basic effort expenditure categories.

Data Cards

The first data card contains a real number in columns one through three which specifies the number of quarters of empirical data which will be processed. Card two identifies the source of the data to be processed. Card three begins the data sequence. Data is entered in fields of ten columns with two digits beyond the decimal, four fields per card. The order of variables must be constant for each card, and is referred to in this order in the program.

Program Output

The capability-mix for selected increments of time, for the particular program being processed, is provided by the ratio program.

FORTRAN IV LISTING OF RATIO PROGRAM

```

DIMENSION E(25),XM(25),T(25),Q(25),R(25)
60 READ(2,4)RN
   NPT=RN+.1
   4 FORMAT(F3.0)
   READ(2,7)
   7 FORMAT(16H1PROGRAM A      )
   WRITE(3,7)
   WRITE(3,1)
   1 FORMAT('0DIRECT MANHOOR RATIOS AS A FUNCTION OF TIME')
   WRITE(3,2)
   2 FORMAT('0      TIME      ',3X,'E/M',10X,'E/T',10X,'E/Q',
610X,'M/T',10X,'M/Q',10X,'Q/T'/)
   READ(2,3)(E(I),XM(I),T(I),Q(I),I=1,NPT)
   3 FORMAT(4F10.1)
   K=0
   DO 10 I=1,NPT
   IF(XM(I)-0)20,20,30
20  REM=0.0
   GO TO 40
30  REM=E(I)/XM(I)
40  IF(T(I)-0)21,21,31
21  RET=0.0
   GO TO 41
31  RET=E(I)/T(I)
41  IF(Q(I)-0)22,22,32
22  REQ=0.0
   GO TO 42
32  REQ=E(I)/Q(I)
42  IF(T(I)-0)23,23,33
23  RMT=0.0
   GO TO 43
33  RMT=XM(I)/T(I)
43  IF(Q(I)-0)24,24,34
24  RMQ=0.0
   GO TO 44
34  RMQ=XM(I)/Q(I)
44  IF(T(I)-0)25,25,35
25  RQT=0.0
   GO TO 45
35  RQT=Q(I)/T(I)
45  K=K+1
   XK=K
   R(I)=XK/RN
   WRITE(3,5)R(I),REM,RET,REQ,RMT,RMQ,RQT
   5 FORMAT(7(F11.4,2X)/)
10  CONTINUE
   GO TO 60
50  STOP
   END

```

APPENDIX A-2

CHI-SQUARE PROGRAM

CHI-SQUARE PROGRAM

Program Description

The Chi-Square Program compares a set of sample frequencies with a set of frequencies that would be expected on the basis of some hypothesis. If the two sets compare well, the hypothesis is accepted; if they compare poorly, the hypothesis is rejected. The formulation of the test is as follows: Let F_1, F_2, \dots, F_k be the sample frequencies of the classes, and let f_1, f_2, \dots, f_k be the frequencies that would be expected on the basis of hypothesis H_0 . Then, if H_0 is true, sample values of the quantity

$$\sum_{i=1}^k \frac{(F_i - f_i)^2}{f_i}$$

will tend to approximate the chi-square distribution with the degrees of freedom equal to k minus the number of F_i parameters that are utilized in the determination of the theoretical distribution. The developed theoretical distribution utilizes the sample mean, sample standard deviation, and sample size as estimates of the theoretical distribution parameters. Hence, a degree of freedom is lost for each estimated theoretical parameter. The program also possesses the capability to transform the input data into any desired form while conducting a search for a dependent variable

distribution which approaches normality.

Data Cards

The first data card may contain any desired numeric or alphanumeric characters in the first 72 columns. This is usually an identification card. The second data card consists of an integer number in columns nine and ten which designates the k class intervals into which the data is to be classified, and an integer number in columns 19 and 20 which specifies the number of observations which follow. The data cards which follow contain the dependent variable data in eight fields of ten columns per card, with four digits beyond the decimal. The program is presently limited to 1000 observations of the dependent variable.

Program Output

The output consists of the empirical and theoretical frequencies grouped into appropriate class intervals. The value of χ^2 is provided, together with the mean and variance. If any class interval contains less than five observations, the grouping of class intervals to achieve the χ^2 criteria must be accomplished manually.

FORTRAN IV LISTING OF CHI SQUARE PROGRAM

```

COMMON X(1000),NN(10),CPT(10),EN(10),CHI(10),ILYA(72)
COMMON K,MOR
DO 2 IRMA=1,25
IRMA=IRMA
READ(2,99)ILYA
WRITE(3,89)ILYA
READ(2,3)K,MOR
READ(2,4)(X(I),I=1,MOR)
DO 6 I=1,MOR
X(I)=X(I)
6 CONTINUE
WRITE(3,9)(X(I),I=1,MOR)
CALL NCHI
3 FORMAT(2I10)
4 FORMAT(8F10.4)
9 FORMAT(/1X,10(1X,F10.4))
89 FORMAT(1H1,1X,72A1)
99 FORMAT(72A1)
2 CONTINUE
CALL EXIT
END

```

```

SUBROUTINE NCHI
COMMON X(1000),NN(10),CPT(10),EN(10),CHI(10),ILYA(72)
COMMON K,MOR
20 FORMAT(/E15.7)
18 FORMAT(/I10,F15.2,E15.7)
209 FORMAT(///7X,4HO(I),10X,4HE(I),6X,6HCHI SQ)
KK=K-1
B=X(1)
DO 33 I=1,MOR
IF(B-X(I))4,4,33
4 B=X(I)
33 CONTINUE
WRITE(3,20)B
A=X(1)
DO 7 I=1,MOR
IF(X(I)-A)88,88,7
88 A=X(I)
7 CONTINUE
WRITE(3,20)A
WRITE(3,209)
RNC=(B-A)/KK
DO 15 I=1,K
15 NN(I)=0.
DO 16 I=1,MOR

```

FORTRAN IV LISTING OF CHI SQUARE PROGRAM (CONTINUED)

```

      IF(X(I)-A)10,10,9
  9  IF(B-X(I))11,11,12
 10  NN(1)=NN(1)+1
      GO TO 16
 11  NN(K)=NN(K)+1
      GO TO 16
 12  J=(X(I)-A)/RNC
      NN(J+1)=NN(J+1)+1
 16  CONTINUE
      CPT(1)=RNC+A
      CPT(K)=B
      DO 27 I=2, KK
 27  CPT(I)=CPT(I-1)+RNC
      SUM=0.0
      DO 13 I=1, MOR
 13  SUM=SUM+X(I)
      AVE=SUM/MOR
      SUM=SUM**2/MOR
      EXSQ=0.
      DO 14 I=1, MOR
 14  EXSQ=EXSQ+X(I)**2
      SIG=SQRT((EXSQ-SUM)/(MOR-1))
      TWOPI=SQRT(2*3.1416)
      TWOPI=1./TWOPI
      DO 23 I=1, KK
      Z=(CPT(I)-AVE)/SIG
      IF(Z)25,26,26
 25  LL=-1
      GO TO 28
 26  LL=1
 28  Z=ABS(Z)
      IF(Z-3.)30,30,31
 31  Z=3.
 30  F=1.
      SUM=Z
      DO 24 J=1,10
      F=F*J
      L=2*J+1
 24  SUM=SUM+((Z**L)*((-1)**J))/((2**J)*L*F)
      EN(I)=(.5+(LL*TWOPI*SUM))*MOR
      IF(EN(I))207,23,23
 207 EN(I)=0.
 23  CONTINUE
      EN(K)=FLOAT(MOR)-EN(KK)
      IF(EN(K))210,211,211
 210 EN(K)=0.
 211 SUM=EN(1)
      DO 29 I=2, KK

```


FORTRAN IV LISTING OF CHI SQUARE PROGRAM (CONTINUED)

```
EN(I)=EN(I)-SUM
29 SUM=EN(I)+SUM
DO 17 I=1,K
F=EN(I)
CHI(I)=((NN(I)-EN(I))**2)/EN(I)
17 WRITE( 3,18)NN(I),F,CHI(I)
SUM=0.
DO 19 I=1,K
19 SUM=SUM+CHI(I)
WRITE( 3,20) SUM
WRITE( 3,20) AVE
WRITE( 3,20) SIG
RETURN
END
```

APPENDIX A-3

REGRESSION-LIMIT PROGRAM

REGRESSION-LIMIT PROGRAM

Program Description

The Regression-Limit Program provides a "least squares" fit of up to 100 observations for each of the dependent and independent variables. The program consists of two main subroutines, first, the regression analysis, and second, the prediction limits for individual values. The mathematical procedure utilized in the regression subroutine is the standard correlation method. Although equations finally solved by the program are linear, many transcendental functions may be included. The program operator's intuition and initiative are the upper bound for the number of possible transformations which may be utilized within the program. With the transformation option, non-linear terms are transformed and handled as linear variables.

The limit subroutine calculates the prediction interval for up to 51 selected values of $X(I)$, for the 99 per cent, 98 per cent, 95 per cent, 90 per cent, or 80 per cent prediction limits for individual values.

The regression analysis subroutine may be utilized without the limit subroutine, but the limit subroutine can be utilized only in conjunction with the regression subroutine.

Data Cards

The first data card may contain any desired numeric or alphameric characters in the first 72 columns. This is usually an identification card. The second card consists of an integer number in column ten, which designates the number of independent variables, and an integer number in columns 19 and 20 which specifies the number of dependent/independent pair observations which follow. The data cards which immediately follow contain the dependent variable data in eight fields of ten columns per card, with four digits beyond the decimal. The independent variable data cards follow the dependent variable data cards, in the same format as the dependent variable. The card immediately after the last independent variable data card possesses a one, two, three, four, or five in column ten which designates the desired prediction interval for the limit subroutine.

Program Output

The output of the Regression-Limit Program consists of:

- a. The regression coefficients b_0 and b_1 .
- b. Table of regression variance analysis including the "F" ratio.
- c. Prediction intervals for the selected individual values of $X(I)$ about the corresponding $Y(I)$.

FORTRAN IV LISTING OF REGRESSION-LIMIT PROGRAM

```

COMMON A(2,3),COEF(2),KON(2),N1,NPT,ILYA(72),B,Q
COMMONSSREG,DSERR,T(5),UL(51),DL(51),AL(119),BARX
COMMON Y(100),X(2,100)
3 FORMAT(2I10)
4 FORMAT(8F10.4)
9 FORMAT(//10(1X,F10.4))
89 FORMAT(1H1,1X,72A1)
99 FORMAT(72A1)
READ(2,99)ILYA
WRITE(3,89)ILYA
READ(2,3)N1,NPT
READ(2,4)(Y(I),I=1,NPT)
DO 5 I=1,N1
5 READ(2,4)(X(I,J),J=1,NPT)
DO 6 J=1,NPT
Y(J)=ALOG(Y(J)+1.0)
6 CONTINUE
B=X(1,1)
DO 33 I=1,NPT
IF(B-X(1,I))8,8,33
8 B=X(1,I)
33 CONTINUE
Q=X(1,1)
DO 7 I=1,NPT
IF(X(1,I)-Q)88,88,7
88 Q=X(1,I)
7 CONTINUE
WRITE(3,9)(Y(I),I=1,NPT)
DO 10 I=1,N1
10 WRITE(3,9)(X(I,J),J=1,NPT)
CALL MLREG
CALL LIMIT
STOP
END

```

```

SUBROUTINE MLREG
COMMON A(2,3),COEF(2),KON(2),N1,NPT,ILYA(72),B,Q
COMMONSSREG,DSERR,T(5),UL(51),DL(51),AL(119),BARX
COMMON Y(100),X(2,100)
2 FORMAT(///2X,18H CURVE COEFFICIENTS)
31 FORMAT(//2X,2HB(,I1,1H),3X,E15.7)
62 FORMAT(//2X6HSOURCE9X4HS.S.9X4HD.F.9X4HM.S.9X1HF)
63 FORMAT(//2X6HDUE TO,4X,E10.4,4X,E10.4,4X,E10.4,4X,E10.4)
64 FORMAT(//2X5HABOUT,4X,E10.4,4X,E10.4,4X,E10.4)
65 FORMAT(//2X5HTOTAL,4X,E10.4,4X,E10.4)
69 FORMAT(//2X,20HANOVA FOR CURVE WITH,I3,13HIND VARIABLES)
900 FORMAT(//4X15HSINGULAR MATRIX/4X20H CURVE FIT IMPOSSIBLE)

```

FORTRAN IV LISTING OF REGRESSION-LIMIT PROGRAM (CONTINUED)

```

      N=N1+1
      M=N+1
      ANPT=NPT
      DO 10 I=1,N
      DO 10 J=1,M
10    A(I,J) =0.
      DO 80 I=2,N
      DO 80 J=1,N
      DO 80 K=1,NPT
80    A(I,J)=A(I,J)+X(I-1,K)*X(J-1,K)
      A(1,1)=NPT
      DO 81 J=2,N
      DO 81 K=1,NPT
81    A(1,J)=A(1,J)+X(J-1,K)
      DO 82 K=1,NPT
82    A(1,M)=A(1,M)+Y(K)
      DO 83 I=2,N
      DO 83 K=1,NPT
83    A(I,M)=A(I,M)+X(I-1,K)*Y(K)
      DO 84 I=1,N
      DO 84 J=1,N
84    A(J,I)=A(I,J)
      BARX=A(1,N)/NPT
      DO 417 J=1,M
      DO 417 I=1,N
417  A(I,J)=A(I,J)/ANPT
      IERR=0
      M=N+1
      DO 25 I=1,N
      IF(A(I,I)) 40,41,40
41    IERR=1
      GO TO 210
40    TEMP =1.0/A(I,I)
      IP1=I+1
      DO 51 J=IP1,M
51    A(I,J) =A(I,J)*TEMP
      DO 24 K=1,N
      IF(I-K) 1,24,1
      1 DO 50 J=IP1,M
50    A(K,J)=A(K,J)-A(K,I)*A(I,J)
24    CONTINUE
25    CONTINUE
      N=N1+1
      M=N+1
210  IF(IERR) 21,20,21
21    WRITE(3,900)
      CALL EXIT
20    CONTINUE
      DO 13 K=1,N

```

FORTRAN IV LISTING OF REGRESSION-LIMIT PROGRAM (CONTINUED)

```

13 COEF(K)=A(K,M)
   SUMR2=0.0
   DO 15 I=1,NPT
     SUMX=0.
     DO 14 K=1,N1
14  SUMX=SUMX+COEF(K+1)*X(K,I)
     YC=COEF(1)+SUMX
     R=Y(I)-YC
15  SUMR2=SUMR2+R*R
     SIGMA=SQRT(SUMR2/ANPT)
     SSERR=SUMR2
     SUMR2=Y(1)
     DO 60 I=2,NPT
60  SUMR2=SUMR2+Y(I)
     BARY1=SUMR2/NPT
     SUMR2=0.0
     DO 61 I=1,NPT
     R=Y(I)-BARY1
61  SUMR2=SUMR2+R*R
     SSTOT=SUMR2
     SSREG=SSTOT-SSERR
     DSREG=SSREG/N1
     DSERR=SSERR/(NPT-(N1+1))
     FRATO=DSREG/DSERR
     DEGFT=N1
     DEGFB=NPT-(N1+1)
     DEGRE=NPT-1
     WRITE(3,69)N1
     WRITE(3,62)
     WRITE(3,63)SSREG,DEGFT,DSREG,FRATO
     WRITE(3,64)SSERR,DEGFB,DSERR
     WRITE(3,65)SSTOT,DEGRE
     WRITE(3,2)
     MM=N1+1
     DO 800 I=1,10
800 KON(I)=I-1
     WRITE(3,31)(KON(I),COEF(I),I=1,MM)
     RETURN
     END

```

```

SUBROUTINE LIMIT
COMMON A(2,3),COEF(2),KON(2),N1,NPT,ILYA(72),B,Q
COMMONSSREG,DSERR,T(5),UL(51),DL(51),AL(119),BARX
COMMON Y(100),X(2,100)
DSERR=SQRT(DSERR)
SUMK=SSREG/(COEF(2)**2)
T(1)=2.576

```

FORTRAN IV LISTING OF REGRESSION-LIMIT PROGRAM (CONTINUED)

```
T(2)=2.326
T(3)=1.960
T(4)=1.645
T(5)=1.282
READ(2,1)MAX
READ(2,4)NX
4 FORMAT(I10)
READ(2,5)(X(1,I),I=1,NX)
5 FORMAT(8F10.4)
WRITE(3,50)
1 FORMAT(I10)
DO 2 I=1,NX
Y(I)=COEF(1)+COEF(2)*X(1,I)
2 CONTINUE
DO 3 I=1,NX
SHERI=SQRT(1+1/NPT+(((X(1,I)-BARX)**2)/SUMK))
SHERI=T(MAX)*DSERR*SHERI
UL(I)=Y(I)+SHERI
3 DL(I)=Y(I)-SHERI
WRITE(3,51)(X(1,I),DL(I),Y(I),UL(I),I=1,NX)
51 FORMAT(/ /4(10X,F10.4))
50 FORMAT(1H1,14X,4HX(I),16X,5HLOWER,16X,4HY(I),15X,5HUPPER)
RETURN
END
```


APPENDIX A-4

TRANSFORM T-A, T-P PROGRAM

TRANSFORM T-A, T-P PROGRAM

Program Description

The Transform T-A, T-P Program performs only one operation, namely, the transformation of the program input data into any form desired by the user. The desired transformation is designated within loop six of the program deck.

Data Cards

The first data card may contain any desired numeric or alphameric characters in the first 72 columns. This is usually an identification card. The second card consists of an integer value in column ten which defines the number of independent variables, and an integer value in columns 19 and 20 which designates the number of dependent/independent variable pair observations which follow. The data cards which immediately follow contain the dependent variable data in eight fields of ten columns per card, with four digits beyond the decimal. The independent variable data cards follow the dependent variable data cards, in the same format as the dependent variable.

Program Output

The output consists of the input data values transformed according to the specified transformation for both the dependent and independent variable.

FORTRAN IV LISTING OF TRANSFORM T-A,T-P PROGRAM

```
COMMON A(10,11),X(10,150),Y(150),COEF(10),KON(10)
COMMON N1,NPT,ILYA(72)
2 READ(2,99)ILYA
WRITE(3,89)ILYA
READ(2,3)N1,NPT
READ(2,4)(Y(I),I=1,NPT)
DO 5 I=1,N1
5 READ(2,4)(X(I,J),J=1,NPT)
DO 6 I=1,N1
DO 6 J=1,NPT

Y(J)=ALOG(Y(J)+1.0)

6 CONTINUE
WRITE(3,9)(Y(I),I=1,NPT)
DO 10 I=1,N1
10 WRITE(3,9)(X(I,J),J=1,NPT)
3 FORMAT(2I10)
4 FORMAT(8F10.4)
9 FORMAT(//1X,10(1X,F10.4))
89 FORMAT(1H1,1X,72A1)
99 FORMAT(72A1)
GO TO 2
END
```

APPENDIX A-5

PREDICTIVE VALUE PROGRAM

PREDICTIVE VALUE PROGRAM

Program Description

The Predictive Value Program generates tables of real values, and the corresponding transformed values, for specified increments of a designated real number range.

Data Cards

Only one data card is required, since the program is a generator. Three values are required on this card, entered in fields of ten columns with six digits beyond the decimal. The first value is the upper limiting value, second is the lower limiting value, and last is the desired increment.

Program Output

The output consists of both the real and the transformed values, read left to right for the specified range and increment.

FORTRAN IV LISTING OF PREDICTIVE VALUE PROGRAM

```
DIMENSION R(1000),RT(1000)
READ(2,1)U,XL,D
1  FORMAT(3F10.6)
   XLM=XL-D
   N=(U-XL)/D+1
   IF(126-N)91,91,93
91  K=126
   GO TO 8
93  K=N
   8  J=1
   DO 10 I=1,K
   R(I)=XLM+J*D
10  J=J+1
   DO 20 I=1,K
20  RT(I)=SQRT(R(I)+2)/R(I)
   WRITE(3,2)
   2  FORMAT(1H1,47X,28HE/M DEPENDENT VARIABLE GROUP)
   WRITE(3,3)
   3  FORMAT(1H0,19X,13HR=BASIC VALUE,44X,40HRT=TRANSFORM VALUE
   6  SQRT(R+2)/R)
   WRITE(3,5)
   5  FORMAT(1H0,6X,5(1HR,9X,2HRT,8X),1HR,9X,2HRT/)
   WRITE(3,4)(R(I),RT(I),I=1,K)
   4  FORMAT(12F10.4/)
   IP=(R(I)-XL)/D+1
   IL=N-IP
   XLM=R(I)
   IF(IL-0)9,9,94
94  IF(126-IL)8,8,92
92  K=IL
   GO TO 8
   9  STOP
   END
```

APPENDIX B

PREDICTIVE MODEL TABULAR VALUES

APPENDIX B-1

TABULAR VALUES FOR THE E/M
DEPENDENT VARIABLE

E/M DEPENDENT VARIABLE GROUP

R=BASIC VALUE				RT=TRANSFORMED VALUE=SQRT(R+2)/R							
R	RT	R	RT	R	RT	R	RT	R	RT	R	RT
0.4752	3.3101	0.5118	3.0963	0.5483	2.9109	0.5849	2.7485	0.6214	2.6051	0.6580	2.4775
0.6945	2.3632	0.7311	2.2603	0.7676	2.1670	0.8042	2.0821	0.8407	2.0046	0.8773	1.9334
0.9138	1.8678	0.9504	1.8072	0.9869	1.7510	1.0235	1.6988	1.0600	1.6501	1.0966	1.6046
1.1331	1.5620	1.1697	1.5220	1.2062	1.4844	1.2428	1.4489	1.2793	1.4154	1.3159	1.3837
1.3524	1.3537	1.3890	1.3253	1.4255	1.2983	1.4621	1.2725	1.4986	1.2480	1.5352	1.2247
1.5717	1.2024	1.6083	1.1810	1.6448	1.1606	1.6814	1.1411	1.7179	1.1223	1.7545	1.1043
1.7910	1.0871	1.8276	1.0704	1.8641	1.0544	1.9007	1.0390	1.9372	1.0242	1.9738	1.0099
2.0103	0.9961	2.0469	0.9827	2.0834	0.9699	2.1200	0.9574	2.1565	0.9453	2.1931	0.9337
2.2296	0.9223	2.2662	0.9114	2.3027	0.9007	2.3392	0.8904	2.3758	0.8804	2.4123	0.8707
2.4489	0.8612	2.4854	0.8521	2.5220	0.8431	2.5585	0.8344	2.5951	0.8260	2.6316	0.8177
2.6682	0.8097	2.7047	0.8019	2.7413	0.7943	2.7778	0.7868	2.8144	0.7796	2.8509	0.7725
2.8875	0.7656	2.9240	0.7588	2.9606	0.7522	2.9971	0.7458	3.0337	0.7395	3.0702	0.7333
3.1068	0.7273	3.1433	0.7214	3.1799	0.7157	3.2164	0.7100	3.2530	0.7045	3.2895	0.6991
3.3261	0.6938	3.3626	0.6886	3.3992	0.6835	3.4357	0.6785	3.4723	0.6736	3.5088	0.6689
3.5454	0.6642	3.5819	0.6595	3.6185	0.6550	3.6550	0.6506	3.6916	0.6462	3.7281	0.6419
3.7647	0.6377	3.8012	0.6336	3.8378	0.6295	3.8743	0.6255	3.9109	0.6216	3.9474	0.6178
3.9840	0.6140	4.0205	0.6102	4.0571	0.6066	4.0936	0.6030	4.1301	0.5994	4.1667	0.5959
4.2032	0.5925	4.2398	0.5891	4.2763	0.5858	4.3129	0.5825	4.3494	0.5793	4.3860	0.5761
4.4225	0.5730	4.4591	0.5699	4.4956	0.5669	4.5322	0.5639	4.5687	0.5609	4.6053	0.5580
4.6418	0.5552	4.6784	0.5523	4.7149	0.5495	4.7515	0.5468	4.7880	0.5441	4.8246	0.5414
4.8611	0.5388	4.8977	0.5362	4.9342	0.5336	4.9708	0.5311	5.0073	0.5286	5.0439	0.5261

E/M DEPENDENT VARIABLE GROUP

R=BASIC VALUE				RT=TRANSFORMED VALUE=SQRT(R+2)/R							
R	RT	R	RT	R	RT	R	RT	R	RT	R	RT
5.0804	0.5237	5.1170	0.5213	5.1535	0.5189	5.1901	0.5166	5.2266	0.5143	5.2632	0.5120
5.2997	0.5097	5.3363	0.5075	5.3728	0.5053	5.4094	0.5032	5.4459	0.5010	5.4825	0.4989
5.5190	0.4968	5.5556	0.4947	5.5921	0.4927	5.6287	0.4907	5.6652	0.4887	5.7018	0.4867
5.7383	0.4847	5.7749	0.4828	5.8114	0.4809	5.8480	0.4790	5.8845	0.4771	5.9210	0.4753
5.9576	0.4734	5.9941	0.4716	6.0307	0.4699	6.0672	0.4681	6.1038	0.4663	6.1403	0.4646
6.1769	0.4629	6.2134	0.4612	6.2500	0.4595	6.2865	0.4579	6.3231	0.4562	6.3596	0.4546
6.3962	0.4530	6.4327	0.4514	6.4693	0.4498	6.5058	0.4482	6.5424	0.4467	6.5789	0.4452
6.6155	0.4436	6.6520	0.4421	6.6886	0.4406	6.7251	0.4392	6.7617	0.4377	6.7982	0.4363
6.8348	0.4348	6.8713	0.4334	6.9079	0.4320	6.9444	0.4306	6.9810	0.4292	7.0175	0.4279
7.0541	0.4265	7.0906	0.4252	7.1272	0.4238	7.1637	0.4225	7.2003	0.4212	7.2368	0.4199
7.2734	0.4186	7.3099	0.4174	7.3465	0.4161	7.3830	0.4148	7.4196	0.4136	7.4561	0.4124
7.4927	0.4112	7.5292	0.4099	7.5658	0.4087	7.6023	0.4076	7.6389	0.4064	7.6754	0.4052
7.7120	0.4040	7.7485	0.4029	7.7850	0.4018	7.8216	0.4006	7.8581	0.3995	7.8947	0.3984
7.9312	0.3973	7.9678	0.3962	8.0043	0.3951	8.0409	0.3940	8.0774	0.3930	8.1140	0.3919
8.1505	0.3908	8.1871	0.3898	8.2236	0.3888	8.2602	0.3877	8.2967	0.3867	8.3333	0.3857
8.3698	0.3847	8.4064	0.3837	8.4429	0.3827	8.4795	0.3817	8.5160	0.3807	8.5526	0.3798
8.5891	0.3788	8.6257	0.3779	8.6622	0.3769	8.6988	0.3760	8.7353	0.3750	8.7719	0.3741
8.8084	0.3732	8.8450	0.3723	8.8815	0.3714	8.9181	0.3705	8.9546	0.3696	8.9912	0.3687
9.0277	0.3678	9.0643	0.3669	9.1008	0.3660	9.1374	0.3652	9.1739	0.3643	9.2105	0.3635
9.2470	0.3626	9.2836	0.3618	9.3201	0.3609	9.3567	0.3601	9.3932	0.3593	9.4298	0.3585
9.4663	0.3577	9.5029	0.3569	9.5394	0.3560	9.5760	0.3553	9.6125	0.3545	9.6490	0.3537

APPENDIX B-2

TABULAR VALUES FOR THE E/T
DEPENDENT VARIABLE

E/T DEPENDENT VARIABLE GROUP

R=BASIC VALUE				RT=TRANSFORMED VALUE=R/(R+1)							
R	RT	R	RT	R	RT	R	RT	R	RT	R	RT
1.6696	0.6254	1.7735	0.6394	1.8773	0.6524	1.9812	0.6645	2.0850	0.6758	2.1888	0.6864
2.2927	0.6963	2.3965	0.7055	2.5004	0.7143	2.6042	0.7225	2.7080	0.7303	2.8119	0.7376
2.9157	0.7446	3.0196	0.7512	3.1234	0.7574	3.2272	0.7634	3.3311	0.7691	3.4349	0.7745
3.5388	0.7796	3.6426	0.7846	3.7464	0.7893	3.8503	0.7938	3.9541	0.7981	4.0579	0.8022
4.1618	0.8062	4.2656	0.8100	4.3695	0.8137	4.4733	0.8172	4.5771	0.8206	4.6810	0.8239
4.7848	0.8271	4.8887	0.8301	4.9925	0.8331	5.0963	0.8359	5.2002	0.8387	5.3040	0.8413
5.4079	0.8439	5.5117	0.8464	5.6155	0.8488	5.7194	0.8511	5.8232	0.8534	5.9270	0.8556
6.0309	0.8577	6.1347	0.8598	6.2386	0.8618	6.3424	0.8638	6.4462	0.8657	6.5501	0.8675
6.6539	0.8693	6.7578	0.8710	6.8616	0.8728	6.9654	0.8744	7.0693	0.8760	7.1731	0.8776
7.2770	0.8791	7.3808	0.8806	7.4846	0.8821	7.5885	0.8835	7.6923	0.8849	7.7962	0.8863
7.9000	0.8876	8.0038	0.8889	8.1077	0.8902	8.2115	0.8914	8.3153	0.8926	8.4192	0.8938
8.5230	0.8949	8.6269	0.8961	8.7307	0.8972	8.8345	0.8983	8.9384	0.8993	9.0422	0.9004
9.1461	0.9014	9.2499	0.9024	9.3537	0.9034	9.4576	0.9043	9.5614	0.9053	9.6653	0.9062
9.7691	0.9071	9.8729	0.9080	9.9768	0.9088	10.0806	0.9097	10.1844	0.9105	10.2883	0.9114
10.3921	0.9122	10.4960	0.9130	10.5998	0.9137	10.7036	0.9145	10.8075	0.9153	10.9113	0.9160
11.0152	0.9167	11.1190	0.9174	11.2228	0.9181	11.3267	0.9188	11.4305	0.9195	11.5344	0.9202
11.6382	0.9208	11.7420	0.9215	11.8459	0.9221	11.9497	0.9227	12.0536	0.9233	12.1574	0.9239
12.2612	0.9245	12.3651	0.9251	12.4689	0.9257	12.5727	0.9263	12.6766	0.9268	12.7804	0.9274
12.8843	0.9279	12.9881	0.9285	13.0919	0.9290	13.1958	0.9295	13.2996	0.9300	13.4035	0.9305
13.5073	0.9310	13.6111	0.9315	13.7150	0.9320	13.8188	0.9325	13.9227	0.9329	14.0265	0.9334
14.1303	0.9339	14.2342	0.9343	14.3380	0.9348	14.4418	0.9352	14.5457	0.9356	14.6495	0.9361

E/T DEPENDENT VARIABLE GROUP

R=BASIC VALUE				RT=TRANSFORMED VALUE=R/(R+1)							
R	RT	R	RT	R	RT	R	RT	R	RT	R	RT
14.7534	0.9365	14.8572	0.9369	14.9610	0.9373	15.0649	0.9377	15.1687	0.9381	15.2726	0.9385
15.3764	0.9389	15.4802	0.9393	15.5841	0.9397	15.6879	0.9400	15.7918	0.9404	15.8956	0.9408
15.9994	0.9411	16.1033	0.9415	16.2071	0.9418	16.3109	0.9422	16.4148	0.9425	16.5186	0.9429
16.6225	0.9432	16.7263	0.9435	16.8301	0.9439	16.9340	0.9442	17.0378	0.9445	17.1417	0.9448
17.2455	0.9451	17.3493	0.9455	17.4532	0.9458	17.5570	0.9461	17.6609	0.9464	17.7647	0.9467
17.8685	0.9470	17.9724	0.9472	18.0762	0.9475	18.1800	0.9478	18.2839	0.9481	18.3877	0.9484
18.4916	0.9486	18.5954	0.9489	18.6992	0.9492	18.8031	0.9495	18.9069	0.9497	19.0108	0.9500
19.1146	0.9502	19.2184	0.9505	19.3223	0.9507	19.4261	0.9510	19.5300	0.9512	19.6338	0.9515
19.7376	0.9517	19.8415	0.9520	19.9453	0.9522	20.0492	0.9524	20.1530	0.9527	20.2568	0.9529
20.3607	0.9531	20.4645	0.9534	20.5683	0.9536	20.6722	0.9538	20.7760	0.9540	20.8799	0.9542
20.9837	0.9545	21.0875	0.9547	21.1914	0.9549	21.2952	0.9551	21.3991	0.9553	21.5029	0.9555
21.6067	0.9557	21.7106	0.9559	21.8144	0.9561	21.9183	0.9563	22.0221	0.9565	22.1259	0.9567
22.2298	0.9569	22.3336	0.9571	22.4375	0.9573	22.5413	0.9575	22.6451	0.9577	22.7490	0.9578
22.8528	0.9580	22.9566	0.9582	23.0605	0.9584	23.1643	0.9586	23.2682	0.9587	23.3720	0.9589
23.4758	0.9591	23.5797	0.9593	23.6835	0.9594	23.7874	0.9596	23.8912	0.9598	23.9950	0.9599
24.0989	0.9601	24.2027	0.9603	24.3066	0.9604	24.4104	0.9606	24.5142	0.9608	24.6181	0.9609
24.7219	0.9611	24.8257	0.9612	24.9296	0.9614	25.0334	0.9615	25.1373	0.9617	25.2411	0.9618
25.3449	0.9620	25.4488	0.9621	25.5526	0.9623	25.6565	0.9624	25.7603	0.9626	25.8641	0.9627
25.9680	0.9629	26.0718	0.9630	26.1757	0.9632	26.2795	0.9633	26.3833	0.9634	26.4872	0.9636
26.5910	0.9637	26.6948	0.9638	26.7987	0.9640	26.9025	0.9641	27.0064	0.9642	27.1102	0.9644
27.2140	0.9645	27.3179	0.9646	27.4217	0.9648	27.5256	0.9649	27.6294	0.9650	27.7332	0.9651

APPENDIX B-3

TABULAR VALUES FOR THE E/Q
DEPENDENT VARIABLE

E/Q DEPENDENT VARIABLE GROUP

R=BASIC VALUE				RT=TRANSFORMED VALUE=LN(R+1)							
R	RT	R	RT	R	RT	R	RT	R	RT	R	RT
2.1293	1.1408	2.2960	1.1927	2.4627	1.2420	2.6294	1.2890	2.7961	1.3339	2.9628	1.3769
3.1295	1.4181	3.2961	1.4577	3.4628	1.4957	3.6295	1.5324	3.7962	1.5678	3.9629	1.6019
4.1296	1.6350	4.2963	1.6670	4.4629	1.6979	4.6296	1.7280	4.7963	1.7572	4.9630	1.7855
5.1297	1.8131	5.2964	1.8399	5.4630	1.8661	5.6297	1.8915	5.7964	1.9164	5.9631	1.9406
6.1298	1.9642	6.2965	1.9873	6.4632	2.0099	6.6298	2.0320	6.7965	2.0536	6.9632	2.0748
7.1299	2.0955	7.2966	2.1158	7.4633	2.1357	7.6300	2.1552	7.7966	2.1743	7.9633	2.1931
8.1300	2.2115	8.2967	2.2296	8.4634	2.2474	8.6301	2.2648	8.7968	2.2820	8.9634	2.2989
9.1301	2.3155	9.2968	2.3318	9.4635	2.3478	9.6302	2.3637	9.7969	2.3792	9.9635	2.3945
10.1302	2.4096	10.2969	2.4245	10.4636	2.4391	10.6303	2.4536	10.7970	2.4678	10.9637	2.4818
11.1303	2.4957	11.2970	2.5093	11.4637	2.5228	11.6304	2.5361	11.7971	2.5492	11.9638	2.5621
12.1304	2.5749	12.2971	2.5875	12.4638	2.6000	12.6305	2.6123	12.7972	2.6244	12.9639	2.6364
13.1306	2.6483	13.2972	2.6600	13.4639	2.6716	13.6306	2.6831	13.7973	2.6944	13.9640	2.7056
14.1307	2.7167	14.2974	2.7276	14.4640	2.7385	14.6307	2.7492	14.7974	2.7598	14.9641	2.7703
15.1308	2.7807	15.2975	2.7910	15.4641	2.8011	15.6308	2.8112	15.7975	2.8212	15.9642	2.8311
16.1309	2.8408	16.2976	2.8505	16.4643	2.8601	16.6309	2.8696	16.7976	2.8790	16.9643	2.8883
17.1310	2.8976	17.2977	2.9067	17.4644	2.9158	17.6311	2.9248	17.7977	2.9337	17.9644	2.9425
18.1311	2.9513	18.2978	2.9599	18.4645	2.9685	18.6312	2.9771	18.7979	2.9855	18.9645	2.9939
19.1312	3.0022	19.2979	3.0105	19.4646	3.0186	19.6313	3.0268	19.7980	3.0348	19.9646	3.0428
20.1313	3.0507	20.2980	3.0586	20.4647	3.0664	20.6314	3.0741	20.7981	3.0818	20.9648	3.0894
21.1314	3.0970	21.2981	3.1045	21.4648	3.1119	21.6315	3.1193	21.7982	3.1266	21.9649	3.1339
22.1315	3.1411	22.2982	3.1483	22.4649	3.1555	22.6316	3.1625	22.7983	3.1696	22.9650	3.1765

E/Q DEPENDENT VARIABLE GROUP

R=BASIC VALUE						RT=TRANSFORMED VALUE=LN(R+1)					
R	RT	R	RT	R	RT	R	RT	R	RT	R	RT
23.1317	3.1835	23.2983	3.1904	23.4650	3.1972	23.6317	3.2040	23.7984	3.2107	23.9651	3.2174
24.1318	3.2241	24.2985	3.2307	24.4651	3.2373	24.6318	3.2438	24.7985	3.2503	24.9652	3.2567
25.1319	3.2631	25.2986	3.2695	25.4652	3.2758	25.6319	3.2821	25.7986	3.2883	25.9653	3.2945
26.1320	3.3007	26.2987	3.3068	26.4654	3.3129	26.6320	3.3189	26.7987	3.3249	26.9654	3.3309
27.1321	3.3369	27.2988	3.3428	27.4655	3.3486	27.6322	3.3545	27.7988	3.3603	27.9655	3.3661
28.1322	3.3718	28.2989	3.3775	28.4656	3.3832	28.6323	3.3888	28.7989	3.3944	28.9656	3.4000
29.1323	3.4055	29.2990	3.4111	29.4657	3.4166	29.6324	3.4220	29.7991	3.4274	29.9657	3.4328
30.1324	3.4382	30.2991	3.4435	30.4658	3.4489	30.6325	3.4541	30.7992	3.4594	30.9659	3.4646
31.1325	3.4698	31.2992	3.4750	31.4659	3.4801	31.6326	3.4853	31.7993	3.4904	31.9660	3.4954
32.1326	3.5005	32.2993	3.5055	32.4660	3.5105	32.6327	3.5154	32.7994	3.5204	32.9661	3.5253
33.1328	3.5302	33.2994	3.5351	33.4661	3.5399	33.6328	3.5448	33.7995	3.5496	33.9662	3.5543
34.1329	3.5591	34.2995	3.5638	34.4662	3.5685	34.6329	3.5732	34.7996	3.5779	34.9663	3.5825
35.1330	3.5872	35.2997	3.5918	35.4664	3.5963	35.6330	3.6009	35.7997	3.6054	35.9664	3.6100
36.1331	3.6145	36.2998	3.6189	36.4665	3.6234	36.6331	3.6278	36.7998	3.6323	36.9665	3.6367
37.1332	3.6410	37.2999	3.6454	37.4666	3.6497	37.6333	3.6541	37.7999	3.6584	37.9666	3.6627
38.1333	3.6669	38.3000	3.6712	38.4667	3.6754	38.6334	3.6796	38.8000	3.6838	38.9667	3.6880
39.1334	3.6922	39.3001	3.6963	39.4668	3.7004	39.6335	3.7045	39.8002	3.7086	39.9668	3.7127
40.1335	3.7168	40.3002	3.7208	40.4669	3.7248	40.6336	3.7289	40.8003	3.7329	40.9670	3.7368
41.1336	3.7408	41.3003	3.7447	41.4670	3.7487	41.6337	3.7526	41.8004	3.7565	41.9671	3.7604
42.1337	3.7643	42.3004	3.7681	42.4671	3.7720	42.6338	3.7758	42.8005	3.7796	42.9672	3.7834
43.1339	3.7872	43.3005	3.7909	43.4672	3.7947	43.6339	3.7984	43.8006	3.8022	43.9673	3.8059

APPENDIX B-4

TABULAR VALUES FOR THE M/T
DEPENDENT VARIABLE

M/T DEPENDENT VARIABLE GROUP

R=BASIC VALUE				RT=TRANSFORMED VALUE=SQRT(R)							
R	RT	R	RT	R	RT	R	RT	R	RT	R	RT
0.4028	0.6347	0.4754	0.6895	0.5480	0.7402	0.6205	0.7877	0.6931	0.8325	0.7656	0.8750
0.8382	0.9155	0.9107	0.9543	0.9833	0.9916	1.0558	1.0275	1.1284	1.0622	1.2009	1.0958
1.2735	1.1285	1.3460	1.1602	1.4186	1.1910	1.4911	1.2211	1.5637	1.2504	1.6363	1.2791
1.7088	1.3072	1.7814	1.3346	1.8539	1.3616	1.9265	1.3879	1.9990	1.4138	2.0716	1.4393
2.1441	1.4642	2.2167	1.4888	2.2892	1.5130	2.3618	1.5368	2.4343	1.5602	2.5069	1.5833
2.5794	1.6060	2.6520	1.6285	2.7245	1.6506	2.7971	1.6724	2.8697	1.6940	2.9422	1.7153
3.0148	1.7363	3.0873	1.7570	3.1599	1.7776	3.2324	1.7979	3.3050	1.8179	3.3775	1.8378
3.4501	1.8574	3.5226	1.8768	3.5952	1.8961	3.6677	1.9151	3.7403	1.9339	3.8128	1.9526
3.8854	1.9711	3.9579	1.9894	4.0305	2.0076	4.1031	2.0256	4.1756	2.0434	4.2482	2.0611
4.3207	2.0786	4.3933	2.0960	4.4658	2.1132	4.5384	2.1303	4.6109	2.1473	4.6835	2.1641
4.7560	2.1808	4.8286	2.1974	4.9011	2.2138	4.9737	2.2301	5.0462	2.2463	5.1188	2.2624
5.1913	2.2784	5.2639	2.2943	5.3365	2.3100	5.4090	2.3257	5.4816	2.3412	5.5541	2.3567
5.6267	2.3720	5.6992	2.3873	5.7718	2.4024	5.8443	2.4175	5.9169	2.4324	5.9894	2.4473
6.0620	2.4621	6.1345	2.4768	6.2071	2.4914	6.2796	2.5059	6.3522	2.5203	6.4247	2.5347
6.4973	2.5489	6.5699	2.5631	6.6424	2.5772	6.7150	2.5913	6.7875	2.6052	6.8601	2.6191
6.9326	2.6329	7.0052	2.6467	7.0777	2.6604	7.1503	2.6740	7.2228	2.6875	7.2954	2.7010
7.3679	2.7144	7.4405	2.7277	7.5130	2.7410	7.5856	2.7542	7.6582	2.7673	7.7307	2.7804
7.8033	2.7934	7.8758	2.8063	7.9484	2.8192	8.0209	2.8321	8.0935	2.8449	8.1660	2.8576
8.2386	2.8703	8.3111	2.8829	8.3837	2.8954	8.4562	2.9079	8.5288	2.9204	8.6013	2.9328
8.6739	2.9451	8.7464	2.9574	8.8190	2.9696	8.8916	2.9818	8.9641	2.9940	9.0367	3.0061
9.1092	3.0181	9.1818	3.0301	9.2543	3.0420	9.3269	3.0540	9.3994	3.0658	9.4720	3.0776

M/T DEPENDENT VARIABLE GROUP

R=BASIC VALUE				RT=TRANSFORMED VALUE=SQRT(R)							
R	RT	R	RT	R	RT	R	RT	R	RT	R	RT
9.5445	3.0894	9.6171	3.1011	9.6896	3.1128	9.7622	3.1244	9.8347	3.1360	9.9073	3.1475
9.9798	3.1590	10.0524	3.1705	10.1250	3.1819	10.1975	3.1933	10.2701	3.2047	10.3426	3.2160
10.4152	3.2272	10.4877	3.2384	10.5603	3.2496	10.6328	3.2608	10.7054	3.2719	10.7779	3.2829
10.8505	3.2940	10.9230	3.3050	10.9956	3.3159	11.0681	3.3268	11.1407	3.3377	11.2132	3.3486
11.2858	3.3594	11.3584	3.3702	11.4309	3.3809	11.5035	3.3916	11.5760	3.4023	11.6486	3.4130
11.7211	3.4236	11.7937	3.4341	11.8662	3.4447	11.9388	3.4552	12.0113	3.4657	12.0839	3.4761
12.1564	3.4866	12.2290	3.4970	12.3015	3.5073	12.3741	3.5176	12.4466	3.5279	12.5192	3.5382
12.5918	3.5484	12.6643	3.5587	12.7369	3.5688	12.8094	3.5790	12.8820	3.5891	12.9545	3.5992
13.0271	3.6093	13.0996	3.6193	13.1722	3.6293	13.2447	3.6393	13.3173	3.6492	13.3898	3.6592
13.4624	3.6691	13.5349	3.6789	13.6075	3.6888	13.6800	3.6986	13.7526	3.7084	13.8252	3.7182
13.8977	3.7279	13.9703	3.7376	14.0428	3.7473	14.1154	3.7570	14.1879	3.7666	14.2605	3.7763
14.3330	3.7859	14.4056	3.7954	14.4781	3.8050	14.5507	3.8145	14.6232	3.8240	14.6958	3.8335
14.7683	3.8429	14.8409	3.8523	14.9134	3.8617	14.9860	3.8711	15.0586	3.8805	15.1311	3.8898
15.2037	3.8991	15.2762	3.9084	15.3488	3.9177	15.4213	3.9270	15.4939	3.9362	15.5664	3.9454
15.6390	3.9546	15.7115	3.9637	15.7841	3.9729	15.8566	3.9820	15.9292	3.9911	16.0017	4.0002
16.0743	4.0092	16.1469	4.0183	16.2194	4.0273	16.2920	4.0363	16.3645	4.0453	16.4371	4.0542
16.5096	4.0632	16.5822	4.0721	16.6547	4.0810	16.7273	4.0899	16.7998	4.0987	16.8724	4.1076
16.9449	4.1164	17.0175	4.1252	17.0900	4.1340	17.1626	4.1427	17.2351	4.1515	17.3077	4.1602
17.3803	4.1689	17.4528	4.1776	17.5254	4.1863	17.5979	4.1949	17.6705	4.2036	17.7430	4.2122
17.8156	4.2208	17.8881	4.2294	17.9607	4.2380	18.0332	4.2465	18.1058	4.2550	18.1783	4.2636
18.2509	4.2721	18.3234	4.2805	18.3960	4.2890	18.4685	4.2975	18.5411	4.3059	18.6137	4.3143

APPENDIX B-5

TABULAR VALUES FOR THE M/Q
DEPENDENT VARIABLE

M/Q DEPENDENT VARIABLE GROUP

R=BASIC VALUE						RT=TRANSFORMED VALUE=LN(LN(R+1))					
R	RT	R	RT	R	RT	R	RT	R	RT	R	RT
1.0627	-0.3229	1.1271	-0.2813	1.1915	-0.2425	1.2560	-0.2062	1.3204	-0.1722	1.3849	-0.1402
1.4493	-0.1100	1.5138	-0.0814	1.5782	-0.0543	1.6426	-0.0286	1.7071	-0.0041	1.7715	0.0192
1.8360	0.0415	1.9004	0.0628	1.9649	0.0832	2.0293	0.1028	2.0937	0.1216	2.1582	0.1397
2.2226	0.1571	2.2871	0.1739	2.3515	0.1901	2.4160	0.2057	2.4804	0.2208	2.5448	0.2354
2.6093	0.2496	2.6737	0.2633	2.7382	0.2765	2.8026	0.2894	2.8671	0.3019	2.9315	0.3141
2.9959	0.3259	3.0604	0.3373	3.1248	0.3485	3.1893	0.3594	3.2537	0.3700	3.3182	0.3803
3.3826	0.3904	3.4470	0.4002	3.5115	0.4098	3.5759	0.4192	3.6404	0.4284	3.7048	0.4373
3.7693	0.4460	3.8337	0.4546	3.8981	0.4630	3.9626	0.4712	4.0270	0.4792	4.0915	0.4870
4.1559	0.4947	4.2204	0.5023	4.2848	0.5097	4.3492	0.5169	4.4137	0.5241	4.4781	0.5310
4.5426	0.5379	4.6070	0.5446	4.6715	0.5512	4.7359	0.5577	4.8003	0.5641	4.8648	0.5703
4.9292	0.5765	4.9937	0.5826	5.0581	0.5885	5.1226	0.5944	5.1870	0.6001	5.2514	0.6058
5.3159	0.6114	5.3803	0.6169	5.4448	0.6223	5.5092	0.6276	5.5737	0.6329	5.6381	0.6380
5.7025	0.6431	5.7670	0.6481	5.8314	0.6531	5.8959	0.6580	5.9603	0.6628	6.0248	0.6675
6.0892	0.6722	6.1536	0.6768	6.2181	0.6819	6.2825	0.6858	6.3470	0.6902	6.4114	0.6946
6.4759	0.6989	6.5403	0.7032	6.6047	0.7074	6.6692	0.7115	6.7336	0.7156	6.7981	0.7197
6.8625	0.7237	6.9270	0.7276	6.9914	0.7315	7.0558	0.7354	7.1203	0.7392	7.1847	0.7430
7.2492	0.7467	7.3136	0.7504	7.3781	0.7540	7.4425	0.7576	7.5069	0.7612	7.5714	0.7647
7.6358	0.7682	7.7003	0.7716	7.7647	0.7750	7.8292	0.7784	7.8936	0.7817	7.9581	0.7850
8.0225	0.7883	8.0869	0.7915	8.1514	0.7947	8.2158	0.7979	8.2803	0.8010	8.3447	0.8041
8.4092	0.8072	8.4736	0.8102	8.5380	0.8132	8.6025	0.8162	8.6669	0.8192	8.7314	0.8221
8.7958	0.8250	8.8603	0.8279	8.9247	0.8307	8.9891	0.8335	9.0536	0.8363	9.1180	0.8391

M/Q DEPENDENT VARIABLE GROUP

R=BASIC VALUE				RT=TRANSFORMED VALUE=LN(LN(R+1))							
R	RT	R	RT	R	RT	R	RT	R	RT	R	RT
9.1825	0.8418	9.2469	0.8445	9.3114	0.8472	9.3758	0.8499	9.4402	0.8525	9.5047	0.8551
9.5691	0.8577	9.6336	0.8603	9.6980	0.8629	9.7625	0.8654	9.8269	0.8679	9.8913	0.8704
9.9558	0.8729	10.0202	0.8753	10.0847	0.8777	10.1491	0.8801	10.2136	0.8825	10.2780	0.8849
10.3424	0.8872	10.4069	0.8896	10.4713	0.8919	10.5358	0.8942	10.6002	0.8965	10.6647	0.8987
10.7291	0.9010	10.7935	0.9032	10.8580	0.9054	10.9224	0.9076	10.9869	0.9097	11.0513	0.9119
11.1158	0.9140	11.1802	0.9162	11.2446	0.9183	11.3091	0.9204	11.3735	0.9224	11.4380	0.9245
11.5024	0.9266	11.5669	0.9286	11.6313	0.9306	11.6957	0.9326	11.7602	0.9346	11.8246	0.9366
11.8891	0.9385	11.9535	0.9405	12.0180	0.9424	12.0824	0.9444	12.1468	0.9463	12.2113	0.9482
12.2757	0.9500	12.3402	0.9519	12.4046	0.9538	12.4691	0.9556	12.5335	0.9574	12.5979	0.9593
12.6624	0.9611	12.7268	0.9629	12.7913	0.9647	12.8557	0.9664	12.9202	0.9682	12.9846	0.9700
13.0490	0.9717	13.1135	0.9734	13.1779	0.9751	13.2424	0.9769	13.3068	0.9786	13.3713	0.9802
13.4357	0.9819	13.5001	0.9836	13.5646	0.9852	13.6290	0.9869	13.6935	0.9885	13.7579	0.9902
13.8224	0.9918	13.8868	0.9934	13.9512	0.9950	14.0157	0.9966	14.0801	0.9981	14.1446	0.9997
14.2090	1.0013	14.2735	1.0028	14.3379	1.0044	14.4023	1.0059	14.4668	1.0074	14.5312	1.0089
14.5957	1.0105	14.6601	1.0120	14.7246	1.0134	14.7890	1.0149	14.8535	1.0164	14.9179	1.0179
14.9823	1.0193	15.0468	1.0208	15.1112	1.0222	15.1757	1.0237	15.2401	1.0251	15.3046	1.0265
15.3690	1.0279	15.4334	1.0293	15.4979	1.0307	15.5623	1.0321	15.6268	1.0335	15.6912	1.0349
15.7557	1.0362	15.8201	1.0376	15.8845	1.0390	15.9490	1.0403	16.0134	1.0416	16.0779	1.0430
16.1423	1.0443	16.2068	1.0456	16.2712	1.0469	16.3356	1.0482	16.4001	1.0495	16.4645	1.0508
16.5290	1.0521	16.5934	1.0534	16.6579	1.0547	16.7223	1.0559	16.7867	1.0572	16.8512	1.0585
16.9156	1.0597	16.9801	1.0610	17.0445	1.0622	17.1090	1.0634	17.1734	1.0646	17.2378	1.0659

APPENDIX B-6

TABULAR VALUES FOR THE Q/T
DEPENDENT VARIABLE

Q/T DEPENDENT VARIABLE GROUP

R=BASIC VALUE				RT=TRANSFORMED VALUE=LN(R+1)							
R	RT	R	RT	R	RT	R	RT	R	RT	R	RT
0.1466	0.1368	0.1548	0.1439	0.1630	0.1510	0.1712	0.1580	0.1793	0.1650	0.1875	0.1719
0.1957	0.1787	0.2039	0.1855	0.2120	0.1923	0.2202	0.1990	0.2284	0.2057	0.2366	0.2123
0.2447	0.2189	0.2529	0.2255	0.2611	0.2320	0.2693	0.2384	0.2774	0.2448	0.2856	0.2512
0.2938	0.2576	0.3020	0.2639	0.3101	0.2701	0.3183	0.2763	0.3265	0.2825	0.3347	0.2887
0.3428	0.2948	0.3510	0.3008	0.3592	0.3069	0.3673	0.3129	0.3755	0.3188	0.3837	0.3247
0.3919	0.3306	0.4000	0.3365	0.4082	0.3423	0.4164	0.3481	0.4246	0.3539	0.4327	0.3596
0.4409	0.3653	0.4491	0.3709	0.4573	0.3755	0.4654	0.3821	0.4736	0.3877	0.4818	0.3932
0.4900	0.3987	0.4981	0.4042	0.5063	0.4096	0.5145	0.4151	0.5227	0.4204	0.5308	0.4258
0.5390	0.4311	0.5472	0.4364	0.5554	0.4417	0.5635	0.4469	0.5717	0.4521	0.5799	0.4573
0.5880	0.4625	0.5962	0.4676	0.6044	0.4727	0.6126	0.4778	0.6207	0.4829	0.6289	0.4879
0.6371	0.4929	0.6453	0.4979	0.6534	0.5028	0.6616	0.5078	0.6698	0.5127	0.6780	0.5176
0.6861	0.5224	0.6943	0.5273	0.7025	0.5321	0.7107	0.5369	0.7188	0.5416	0.7270	0.5464
0.7352	0.5511	0.7434	0.5558	0.7515	0.5605	0.7597	0.5651	0.7679	0.5698	0.7760	0.5744
0.7842	0.5790	0.7924	0.5835	0.8006	0.5881	0.8087	0.5926	0.8169	0.5971	0.8251	0.6016
0.8333	0.6061	0.8414	0.6105	0.8496	0.6150	0.8578	0.6194	0.8660	0.6238	0.8741	0.6281
0.8823	0.6325	0.8905	0.6368	0.8987	0.6411	0.9068	0.6454	0.9150	0.6497	0.9232	0.6540
0.9314	0.6582	0.9395	0.6624	0.9477	0.6666	0.9559	0.6708	0.9640	0.6750	0.9722	0.6791
0.9804	0.6833	0.9886	0.6874	0.9967	0.6915	1.0049	0.6956	1.0131	0.6996	1.0213	0.7037
1.0294	0.7077	1.0376	0.7118	1.0458	0.7158	1.0540	0.7197	1.0621	0.7237	1.0703	0.7277
1.0785	0.7316	1.0867	0.7355	1.0948	0.7394	1.1030	0.7433	1.1112	0.7472	1.1194	0.7511
1.1275	0.7549	1.1357	0.7588	1.1439	0.7626	1.1521	0.7664	1.1602	0.7702	1.1684	0.7740

Q/T DEPENDENT VARIABLE GROUP

R=BASIC VALUE				RT=TRANSFORMED VALUE=LN(R+1)							
R	RT	R	RT	R	RT	R	RT	R	RT	R	RT
1.1766	0.7777	1.1847	0.7815	1.1929	0.7852	1.2011	0.7889	1.2093	0.7926	1.2174	0.7963
1.2256	0.8000	1.2338	0.8037	1.2420	0.8073	1.2501	0.8110	1.2583	0.8146	1.2665	0.8182
1.2747	0.8218	1.2828	0.8254	1.2910	0.8290	1.2992	0.8325	1.3074	0.8361	1.3155	0.8396
1.3237	0.8431	1.3319	0.8466	1.3401	0.8501	1.3482	0.8536	1.3564	0.8571	1.3646	0.8606
1.3727	0.8640	1.3809	0.8675	1.3891	0.8709	1.3973	0.8743	1.4054	0.8777	1.4136	0.8811
1.4218	0.8845	1.4300	0.8878	1.4381	0.8912	1.4463	0.8946	1.4545	0.8979	1.4627	0.9012
1.4708	0.9045	1.4790	0.9078	1.4872	0.9111	1.4954	0.9144	1.5035	0.9177	1.5117	0.9209
1.5199	0.9242	1.5281	0.9274	1.5362	0.9306	1.5444	0.9339	1.5526	0.9371	1.5608	0.9403
1.5689	0.9435	1.5771	0.9466	1.5853	0.9498	1.5934	0.9530	1.6016	0.9561	1.6098	0.9592
1.6180	0.9624	1.6261	0.9655	1.6343	0.9686	1.6425	0.9717	1.6507	0.9748	1.6588	0.9779
1.6670	0.9809	1.6752	0.9840	1.6834	0.9870	1.6915	0.9901	1.6997	0.9931	1.7079	0.9961
1.7161	0.9991	1.7242	1.0022	1.7324	1.0052	1.7406	1.0081	1.7488	1.0111	1.7569	1.0141
1.7651	1.0170	1.7733	1.0200	1.7814	1.0229	1.7896	1.0259	1.7978	1.0288	1.8060	1.0317
1.8141	1.0346	1.8223	1.0375	1.8305	1.0404	1.8387	1.0433	1.8468	1.0462	1.8550	1.0490
1.8632	1.0519	1.8714	1.0548	1.8795	1.0576	1.8877	1.0604	1.8959	1.0633	1.9041	1.0661
1.9122	1.0689	1.9204	1.0717	1.9286	1.0745	1.9368	1.0773	1.9449	1.0801	1.9531	1.0828
1.9613	1.0856	1.9695	1.0883	1.9776	1.0911	1.9858	1.0938	1.9940	1.0966	2.0021	1.0993
2.0103	1.1020	2.0185	1.1047	2.0267	1.1074	2.0348	1.1101	2.0430	1.1128	2.0512	1.1155
2.0594	1.1182	2.0675	1.1208	2.0757	1.1235	2.0839	1.1262	2.0921	1.1288	2.1002	1.1314
2.1084	1.1341	2.1166	1.1367	2.1248	1.1393	2.1329	1.1419	2.1411	1.1445	2.1493	1.1471
2.1575	1.1497	2.1656	1.1523	2.1738	1.1549	2.1820	1.1575	2.1901	1.1600	2.1983	1.1626

APPENDIX B-7

TABULAR VALUES FOR THE E/T
INDEPENDENT VARIABLE

E/T INDEPENDENT VARIABLE GROUP

R=BASIC VALUE				RT=TRANSFORMED VALUE=SQRT(R)/(R+0.6)							
R	RT	R	RT	R	RT	R	RT	R	RT	R	RT
0.1428	0.5088	0.1449	0.5110	0.1469	0.5131	0.1489	0.5152	0.1509	0.5173	0.1529	0.5193
0.1549	0.5213	0.1569	0.5233	0.1589	0.5253	0.1609	0.5272	0.1629	0.5291	0.1649	0.5309
0.1669	0.5327	0.1689	0.5345	0.1709	0.5363	0.1729	0.5380	0.1749	0.5397	0.1770	0.5414
0.1790	0.5431	0.1810	0.5447	0.1830	0.5463	0.1850	0.5479	0.1870	0.5494	0.1890	0.5510
0.1910	0.5525	0.1930	0.5540	0.1950	0.5554	0.1970	0.5569	0.1990	0.5583	0.2010	0.5597
0.2030	0.5611	0.2050	0.5625	0.2070	0.5638	0.2090	0.5651	0.2111	0.5664	0.2131	0.5677
0.2151	0.5690	0.2171	0.5702	0.2191	0.5714	0.2211	0.5726	0.2231	0.5738	0.2251	0.5750
0.2271	0.5761	0.2291	0.5773	0.2311	0.5784	0.2331	0.5795	0.2351	0.5806	0.2371	0.5817
0.2391	0.5827	0.2411	0.5838	0.2431	0.5848	0.2452	0.5858	0.2472	0.5868	0.2492	0.5878
0.2512	0.5888	0.2532	0.5897	0.2552	0.5907	0.2572	0.5916	0.2592	0.5925	0.2612	0.5934
0.2632	0.5943	0.2652	0.5952	0.2672	0.5961	0.2692	0.5969	0.2712	0.5977	0.2732	0.5986
0.2752	0.5994	0.2773	0.6002	0.2793	0.6010	0.2813	0.6018	0.2833	0.6025	0.2853	0.6033
0.2873	0.6040	0.2893	0.6048	0.2913	0.6055	0.2933	0.6062	0.2953	0.6069	0.2973	0.6076
0.2993	0.6083	0.3013	0.6090	0.3033	0.6097	0.3053	0.6103	0.3073	0.6110	0.3093	0.6116
0.3114	0.6122	0.3134	0.6129	0.3154	0.6135	0.3174	0.6141	0.3194	0.6147	0.3214	0.6152
0.3234	0.6158	0.3254	0.6164	0.3274	0.6169	0.3294	0.6175	0.3314	0.6180	0.3334	0.6186
0.3354	0.6191	0.3374	0.6196	0.3394	0.6201	0.3414	0.6206	0.3434	0.6211	0.3455	0.6216
0.3475	0.6221	0.3495	0.6226	0.3515	0.6231	0.3535	0.6235	0.3555	0.6240	0.3575	0.6244
0.3595	0.6249	0.3615	0.6253	0.3635	0.6257	0.3655	0.6261	0.3675	0.6265	0.3695	0.6270
0.3715	0.6274	0.3735	0.6278	0.3755	0.6281	0.3776	0.6285	0.3796	0.6289	0.3816	0.6293
0.3836	0.6296	0.3856	0.6300	0.3876	0.6303	0.3896	0.6307	0.3916	0.6310	0.3936	0.6314

E/T INDEPENDENT VARIABLE GROUP

R=BASIC VALUE

RT=TRANSFORMED VALUE=SQRT(R)/(R+0.6)

R	RT	R	RT	R	RT	R	RT	R	RT	R	RT
0.3956	0.6317	0.3976	0.6320	0.3996	0.6324	0.4016	0.6327	0.4036	0.6330	0.4056	0.6333
0.4076	0.6336	0.4096	0.6339	0.4117	0.6342	0.4137	0.6345	0.4157	0.6347	0.4177	0.6350
0.4197	0.6353	0.4217	0.6355	0.4237	0.6358	0.4257	0.6361	0.4277	0.6363	0.4297	0.6366
0.4317	0.6368	0.4337	0.6370	0.4357	0.6373	0.4377	0.6375	0.4397	0.6377	0.4417	0.6380
0.4437	0.6382	0.4458	0.6384	0.4478	0.6386	0.4498	0.6388	0.4518	0.6390	0.4538	0.6392
0.4558	0.6394	0.4578	0.6396	0.4598	0.6398	0.4618	0.6400	0.4638	0.6401	0.4658	0.6403
0.4678	0.6405	0.4698	0.6407	0.4718	0.6408	0.4738	0.6410	0.4758	0.6411	0.4779	0.6413
0.4799	0.6414	0.4819	0.6416	0.4839	0.6417	0.4859	0.6419	0.4879	0.6420	0.4899	0.6421
0.4919	0.6423	0.4939	0.6424	0.4959	0.6425	0.4979	0.6427	0.4999	0.6428	0.5019	0.6429
0.5039	0.6430	0.5059	0.6431	0.5079	0.6432	0.5099	0.6433	0.5120	0.6434	0.5140	0.6435
0.5160	0.6436	0.5180	0.6437	0.5200	0.6438	0.5220	0.6439	0.5240	0.6440	0.5260	0.6441
0.5280	0.6441	0.5300	0.6442	0.5320	0.6443	0.5340	0.6444	0.5360	0.6444	0.5380	0.6445
0.5400	0.6446	0.5420	0.6446	0.5441	0.6447	0.5461	0.6447	0.5481	0.6448	0.5501	0.6448
0.5521	0.6449	0.5541	0.6449	0.5561	0.6450	0.5581	0.6450	0.5601	0.6451	0.5621	0.6451
0.5641	0.6451	0.5661	0.6452	0.5681	0.6452	0.5701	0.6452	0.5721	0.6453	0.5741	0.6453
0.5761	0.6453	0.5782	0.6453	0.5802	0.6454	0.5822	0.6454	0.5842	0.6454	0.5862	0.6454
0.5882	0.6454	0.5902	0.6454	0.5922	0.6454	0.5942	0.6454	0.5962	0.6454	0.5982	0.6454
0.6002	0.6454	0.6022	0.6454	0.6042	0.6454	0.6062	0.6454	0.6082	0.6454	0.6102	0.6454
0.6123	0.6454	0.6143	0.6454	0.6163	0.6454	0.6183	0.6454	0.6203	0.6454	0.6223	0.6453
0.6243	0.6453	0.6263	0.6453	0.6283	0.6453	0.6303	0.6453	0.6323	0.6452	0.6343	0.6452
0.6363	0.6452	0.6383	0.6451	0.6403	0.6451	0.6423	0.6451	0.6444	0.6450	0.6464	0.6450

APPENDIX B-8

TABULAR VALUES FOR THE M/Q
INDEPENDENT VARIABLE

M/Q INDEPENDENT VARIABLE GROUP

R=BASIC VALUE				RT=TRANSFORMED VALUE=LN(ABS((X/A**X)/((X/A**X)-.5367)))							
R	RT	R	RT	R	RT	R	RT	R	RT	R	RT
-3.9654	-0.1269	-3.9331	-0.1279	-3.9008	-0.1289	-3.8685	-0.1299	-3.8361	-0.1309	-3.8038	-0.1319
-3.7715	-0.1330	-3.7392	-0.1341	-3.7068	-0.1352	-3.6745	-0.1363	-3.6422	-0.1374	-3.6099	-0.1386
-3.5775	-0.1397	-3.5452	-0.1409	-3.5129	-0.1421	-3.4806	-0.1434	-3.4482	-0.1446	-3.4159	-0.1459
-3.3836	-0.1472	-3.3513	-0.1485	-3.3189	-0.1498	-3.2866	-0.1512	-3.2543	-0.1526	-3.2220	-0.1540
-3.1896	-0.1555	-3.1573	-0.1569	-3.1250	-0.1584	-3.0926	-0.1600	-3.0603	-0.1615	-3.0280	-0.1631
-2.9957	-0.1647	-2.9633	-0.1664	-2.9310	-0.1681	-2.8987	-0.1698	-2.8664	-0.1716	-2.8340	-0.1734
-2.8017	-0.1752	-2.7694	-0.1771	-2.7371	-0.1790	-2.7047	-0.1810	-2.6724	-0.1830	-2.6401	-0.1850
-2.6078	-0.1871	-2.5754	-0.1892	-2.5431	-0.1914	-2.5108	-0.1937	-2.4785	-0.1960	-2.4461	-0.1983
-2.4138	-0.2007	-2.3815	-0.2032	-2.3491	-0.2057	-2.3168	-0.2083	-2.2845	-0.2110	-2.2522	-0.2137
-2.2198	-0.2165	-2.1875	-0.2194	-2.1552	-0.2223	-2.1229	-0.2253	-2.0905	-0.2285	-2.0582	-0.2317
-2.0259	-0.2350	-1.9936	-0.2383	-1.9612	-0.2418	-1.9289	-0.2454	-1.8966	-0.2491	-1.8643	-0.2529
-1.8319	-0.2569	-1.7996	-0.2609	-1.7673	-0.2651	-1.7350	-0.2695	-1.7026	-0.2739	-1.6703	-0.2786
-1.6380	-0.2834	-1.6057	-0.2883	-1.5733	-0.2935	-1.5410	-0.2988	-1.5087	-0.3043	-1.4763	-0.3100
-1.4440	-0.3160	-1.4117	-0.3222	-1.3794	-0.3286	-1.3470	-0.3353	-1.3147	-0.3423	-1.2824	-0.3495
-1.2501	-0.3571	-1.2177	-0.3651	-1.1854	-0.3734	-1.1531	-0.3821	-1.1208	-0.3912	-1.0884	-0.4008
-1.0561	-0.4108	-1.0238	-0.4214	-0.9915	-0.4326	-0.9591	-0.4443	-0.9268	-0.4568	-0.8945	-0.4699
-0.8622	-0.4839	-0.8298	-0.4987	-0.7975	-0.5145	-0.7652	-0.5314	-0.7328	-0.5494	-0.7005	-0.5687
-0.6682	-0.5895	-0.6359	-0.6119	-0.6035	-0.6361	-0.5712	-0.6624	-0.5389	-0.6910	-0.5066	-0.7224
-0.4742	-0.7568	-0.4419	-0.7949	-0.4096	-0.8373	-0.3773	-0.8847	-0.3449	-0.9383	-0.3126	-0.9993
-0.2803	-1.0696	-0.2480	-1.1518	-0.2156	-1.2494	-0.1833	-1.3678	-0.1510	-1.5159	-0.1187	-1.7086
-0.0863	-1.9759	-0.0540	-2.3914	-0.0217	-3.2465	0.0105	-3.9048	0.0429	-2.4426	0.0752	-1.8135

M/Q INDEPENDENT VARIABLE GROUP

R=BASIC VALUE				RT=TRANSFORMED VALUE=LN(ABS((X/A**X)/((X/A**X)-.5367)))							
R	RT	R	RT	R	RT	R	RT	R	RT	R	RT
0.1075	-1.3835	0.1399	-1.0424	0.1722	-0.7496	0.2045	-0.4847	0.2368	-0.2356	0.2692	0.0063
0.3015	0.2485	0.3338	0.4982	0.3661	0.7643	0.3985	1.0591	0.4308	1.4035	0.4631	1.8402
0.4954	2.4868	0.5278	4.0842	0.5601	3.1737	0.5924	2.3631	0.6247	1.9590	0.6571	1.6968
0.6894	1.5071	0.7217	1.3609	0.7540	1.2437	0.7864	1.1471	0.8187	1.0656	0.8510	0.9959
0.8834	0.9353	0.9157	0.8821	0.9480	0.8349	0.9803	0.7928	1.0127	0.7549	1.0450	0.7206
1.0773	0.6894	1.1096	0.6609	1.1420	0.6348	1.1743	0.6106	1.2066	0.5883	1.2389	0.5677
1.2713	0.5484	1.3036	0.5305	1.3359	0.5137	1.3682	0.4979	1.4006	0.4831	1.4329	0.4692
1.4652	0.4561	1.4975	0.4437	1.5299	0.4320	1.5622	0.4208	1.5945	0.4103	1.6268	0.4003
1.6592	0.3907	1.6915	0.3816	1.7238	0.3729	1.7562	0.3647	1.7885	0.3567	1.8208	0.3492
1.8531	0.3419	1.8855	0.3349	1.9178	0.3282	1.9501	0.3218	1.9824	0.3156	2.0148	0.3097
2.0471	0.3040	2.0794	0.2985	2.1117	0.2932	2.1441	0.2880	2.1764	0.2831	2.2087	0.2783
2.2410	0.2737	2.2734	0.2692	2.3057	0.2649	2.3380	0.2607	2.3703	0.2567	2.4027	0.2527
2.4350	0.2489	2.4673	0.2452	2.4997	0.2416	2.5320	0.2382	2.5643	0.2348	2.5966	0.2315
2.6290	0.2283	2.6613	0.2252	2.6936	0.2222	2.7259	0.2192	2.7583	0.2163	2.7906	0.2135
2.8229	0.2108	2.8552	0.2082	2.8876	0.2056	2.9199	0.2031	2.9522	0.2006	2.9845	0.1982
3.0169	0.1958	3.0492	0.1935	3.0815	0.1913	3.1138	0.1891	3.1462	0.1870	3.1785	0.1849
3.2108	0.1829	3.2431	0.1809	3.2755	0.1789	3.3078	0.1770	3.3401	0.1751	3.3725	0.1733
3.4048	0.1715	3.4371	0.1697	3.4694	0.1680	3.5018	0.1663	3.5341	0.1647	3.5664	0.1630
3.5987	0.1615	3.6311	0.1599	3.6634	0.1584	3.6957	0.1569	3.7280	0.1554	3.7604	0.1539
3.7927	0.1525	3.8250	0.1511	3.8573	0.1498	3.8897	0.1484	3.9220	0.1471	3.9543	0.1458
3.9866	0.1445	4.0190	0.1433	4.0513	0.1421	4.0836	0.1409	4.1160	0.1397	4.1483	0.1385

VITA

Richard Martin Wyskida

Candidate for the Degree of
Doctor of Philosophy

Thesis: AN EVALUATIVE AND PREDICTIVE GROWTH PHASE
CAPABILITY-MIX MODEL FOR R&D LAUNCH VEHICLE
PROGRAMS

Major Field: Engineering

Biographical:

Personal Data: Born in Perrysburg, New York,
September 2, 1935, the son of Martin J. and
Mary Wyskida.

Education: Attended grade school in Perrysburg,
New York; graduated from Gowanda High School,
Gowanda, New York, in 1952; received the Bachelor
of Science degree from Tri-State College, Angola,
Indiana, with a major in Electrical Engineering,
in June, 1960; received the Master of Science
degree from the University of Alabama, with a
major in Industrial Engineering, in August, 1964;
completed requirements for the Doctor of
Philosophy degree in July, 1968.

Professional Experience: Employed by the Philco
Corporation as a Field Engineer from July, 1960,
to February, 1962; employed as a Staff Engineer
by the George C. Marshall Space Flight Center of
the National Aeronautics and Space Administration
from February, 1962, to the present.

Professional Membership: Registered Professional
Engineer, State of Alabama; Alpha Pi Mu;
Operations Research Society of America; American
Institute of Industrial Engineers.