

1U 17.3" HD 1080p Dual Rail Rackmount Widescreen LCD Console

RACKCOND1701

RKCOND1701xx



*actual product may vary from photos

DE: Bedienungsanleitung - de.startech.com

FR: Guide de l'utilisateur - fr.startech.com

ES: Guía del usuario - es.startech.com

IT: Guida per l'uso - it.startech.com

NL: Gebruiksaanwijzing - nl.startech.com

PT: Guia do usuário - pt.startech.com

For the most up-to-date information, please visit: www.startech.com

FCC Compliance Statement

This equipment has been tested and found to comply with the limits for a Class B digital device, pursuant to part 15 of the FCC Rules. These limits are designed to provide reasonable protection against harmful interference in a residential installation. This equipment generates, uses and can radiate radio frequency energy and, if not installed and used in accordance with the instructions, may cause harmful interference to radio communications. However, there is no guarantee that interference will not occur in a particular installation. If this equipment does cause harmful interference to radio or television reception, which can be determined by turning the equipment off and on, the user is encouraged to try to correct the interference by one or more of the following measures:

- Reorient or relocate the receiving antenna.
- Increase the separation between the equipment and receiver.
- Connect the equipment into an outlet on a circuit different from that to which the receiver is connected.
- Consult the dealer or an experienced radio/TV technician for help.

Use of Trademarks, Registered Trademarks, and other Protected Names and Symbols

This manual may make reference to trademarks, registered trademarks, and other protected names and/or symbols of third-party companies not related in any way to StarTech.com. Where they occur these references are for illustrative purposes only and do not represent an endorsement of a product or service by StarTech.com, or an endorsement of the product(s) to which this manual applies by the third-party company in question. Regardless of any direct acknowledgement elsewhere in the body of this document, StarTech.com hereby acknowledges that all trademarks, registered trademarks, service marks, and other protected names and/or symbols contained in this manual and related documents are the property of their respective holders.

Table of Contents

Introduction	1
Packaging Contents	1
Installation	1
Hardware Installation/Assembly	1
Connecting to a USB Controlled Computer	4
Connecting to a PS/2 Controlled Computer	4
Connecting to a KVM Switch	4
Operation	5
Front Panel Controls.....	5
Alternative Input Devices.....	6
Keyboard Replacement	7
Touchpad Replacement	8
Specifications	9
Technical Support	10
Warranty Information	10

Introduction

Packaging Contents

- 1U LCD Rack Console
- KVM Module
- 2 x KVM Module Extension Bracket
- 2 x Rear Bracket
- Universal Power Adapter
- Instruction Manual

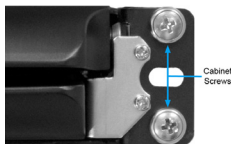
Installation

Hardware Installation/Assembly

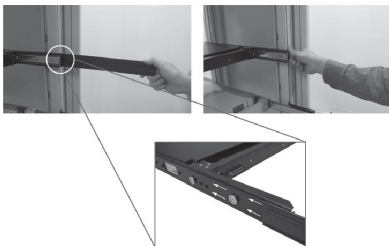
1. Note the safety stopper on the console drawer. The safety stopper is designed to prevent the drawer from sliding out during transportation. Do not remove until the console has been properly installed.



2. Slide the assembled console into the rack cabinet from the front and fasten the console onto the front brackets using the proper cabinet screws for the rack/cabinet.



3. The rear brackets, and slide rails have a tight fit. Carefully slide the rear brackets into the front rails, then fasten the brackets to the cabinet/rack posts.



4. Attach the extensions brackets to both sides of the KVM switch module. Please note the length of the extensions and mount them as shown.

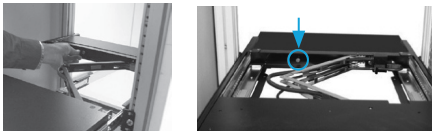


NOTE: The orientation of the wide side of the extension

5. Push the KVM switch module evenly toward the drawer:



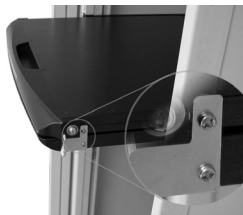
6. Slide the console drawer out and fasten the KVM module together using the screw provided:



7. Remove the safety stoppers on both sides of the rack console by unfastening the small screws. Please note that once the Safety Stopper is removed, the drawer is free to slide out when the console is tilted. Be cautious, as this could cause injury. Ensure the console is properly installed before removing the safety stoppers.



8. Slide the console out slightly until the stoppers along the sides are accessible. Remove the stopper by unfastening the small screws holding it in place.

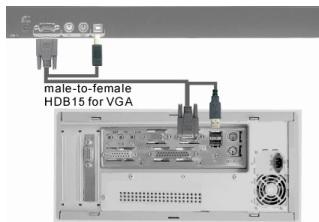


9. Connect the power supply to the power jack on the KVM module to complete the assembly..

Please note: You can only connect to a computer using either the PS/2 or USB port, not both simultaneously.

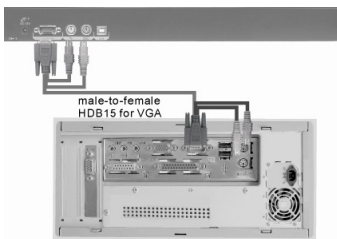
Connecting to a USB Controlled Computer

Connect the standard VGA cable and a USB A-B cable to the computer and KVM Module as shown below. The computer can be a USB-ready PC, Sun, HP server, or a Mac.



Connecting to a PS/2 Controlled Computer

Connect the standard VGA cable and two mini-DIN6 male-to-male cables to the computer and KVM Module as shown below. There are two mini-DIN6 female connectors marked with keyboard and mouse, be sure not to swap the connections.



Connecting to a KVM Switch

When cascading with a KVM switch, KVM Module can be used to control up to 16 computers. The connection is exactly the same as is shown above (see Connecting to a USB Controlled Computer, or Connecting to a PS/2 Controlled Computer). The only difference is the connection would be made to the "CONSOLE PORT" (could be "PS/2" or "USB" interface) of the KVM switch instead, of a computer.

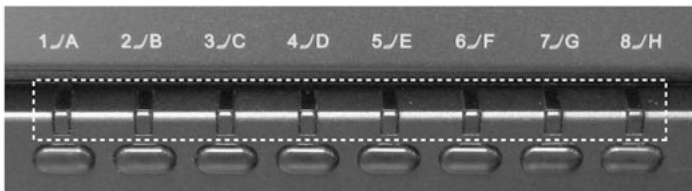
Please choose either PS/2 or USB to connect, prior to turning on your computer!

Operation

Front Panel Controls

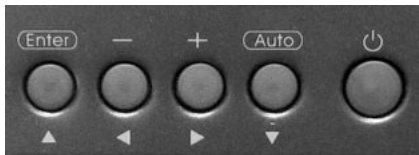
KVM Control and Status:

(This section is effective only when a multi-port KVM switch module, not included, is connected.)



- **Computer Selection Buttons** - Press one of these push buttons to select a computer. For 16 port models, 1~8 represent the lower 8 ports, while A~H indicates the higher 8 ports. Port 1 and A share the same push button; if port 1 is already selected, tap its push button to select port A. If port 1 is not selected, press and hold push button 1 for two seconds to select port A.
- **Selected Computer LED Indicator** - One of the indicators lights up when the corresponding KVM port is selected via push buttons, hotkey or OSD menu. The LED will be steady when 1~8 is selected or flashing when A~H is selected.

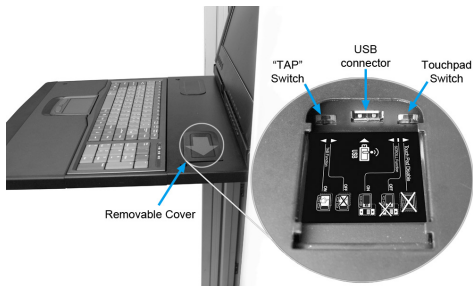
LCD Panel Control:



- **LCD Power button** - Turns on the LCD screen.
- **Auto** - This button will automatically adjust the best setting for the display signal.
- **+ / Right Arrow** - increases the value of the selected setting in the OSD or moves to the next item.
- **- / Left Arrow** - decreases the value of the selected setting in the OSD or moves to the previous item.
- **Enter / Up Arrow** - Activates the currently selected setting in the OSD.

Alternative Input Devices

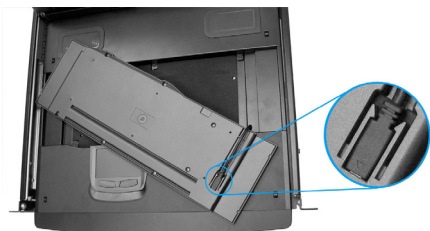
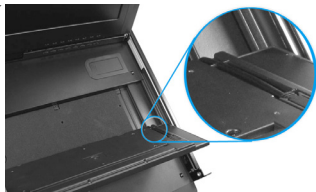
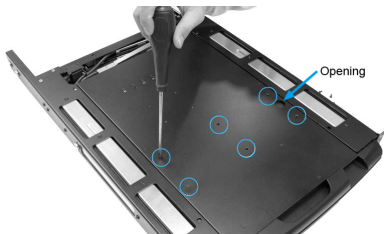
In addition to the built-in keyboard and touchpad, this rack console also supports using an external keyboards and mouse, including wireless (cordless) keyboards and mice. A USB port is accessible on the rack console that allow for connecting input devices, as well as controls that can disable the touchpad in favour of an external mouse. The USB port is hidden under the removable cover located in the upper right corner of the keyboard tray. This USB port is best suited for use with a wireless keyboard/mouse, as the transmitter can be connected, then neatly hidden from view.



Two switches are also hidden in this compartment, that can assist with the use of an external mouse. The Touchpad switch can disable the touchpad completely, or simply disable the touchpad scrolling feature. While the "Tap" switch can disable the touchpad "Tap" feature, so tapping the touchpad does not register as a mouse-click.

Keyboard Replacement

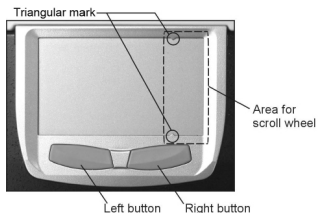
The keyboard is replaceable in the event of language changes or maintenance. To replace the keyboard, pull out the keyboard tray, and remove 6 screws from the underside of the tray. There is a small hole on the bottom of the tray as well, that can be used to lift the keyboard out of the tray. Tilt the keyboard up, locate the mini-USB cable underneath the keyboard and unplug it gently. While installing the replacement keyboard, please ensure that you extend just enough of the cable to keep the keyboard flat inside the tray.



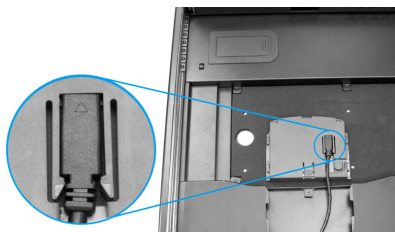
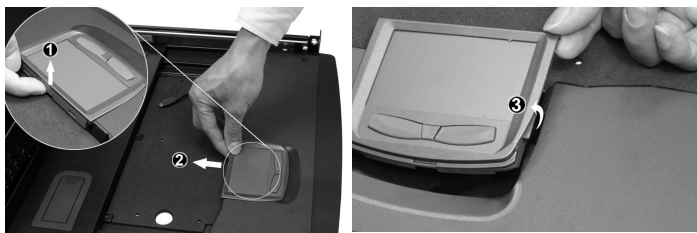
Please note: The triangular mark on the mini USB connector must face outwards (be visible).

Touchpad Replacement

The built-on Touchpad offers “wheel mouse” functionality. The area of the Touch Pad to the right side of the two small triangular marks is the simulated “wheel” as shown below:



With the keyboard removed, to remove the Touch Pad, pull the small tab underneath it upward to release the latch (1). Slide the touchpad unit forwards (2) until the Touch Pad can be lifted up clear from the notches, as shown in the figure below (3). The Touchpad is connected by a mini-USB cable. To install the Touchpad, connect the mini-USB cable and then slide the Touch Pad all the way in till you hear a click sound as it is locked in position.



Specifications

Display Size	17.3"
Panel Type	Active Matrix TFT LCD
Maximum Screen Resolution	1920x1080 (60/70/75 Hz)
Supported Colors	262K (RGB 6-bit)
Response Time	8ms
Back Lighting	LED
Contrast Ratio	500:1
Brightness	300 cd/m2
Pixel Pitch	0.199mm x 0.199mm
Viewing Angle	Horizontal: -70 ~ 70 Vertical: -60 ~ 60
Keyboard/Mouse	105-key USB keyboard with touchpad
Connectors	1 x DE-15 VGA male 1 x USB type B female 2 x PS/2 female
Power Source	100 ~ 240 VAC
Power Consumption	13.2 W
Chassis Material	Heavy duty steel
Minimum/Maximum Mounting Depth	600mm (23.6in) / 1150mm (45.3in)
Operating Temperature	0°C ~ 40°C (32°F ~ 104°F)
Storage Temperature	-20°C ~ 60°C (-4°F ~ 140°F)
Humidity	0% ~ 80% RH
Dimensions (LxWxH)	440mm x 700mm x 43.8mm
Weight	15.6kg
Certifications	CE, UL, FCC

Technical Support

StarTech.com's lifetime technical support is an integral part of our commitment to provide industry-leading solutions. If you ever need help with your product, visit www.startech.com/support and access our comprehensive selection of online tools, documentation, and downloads.

For the latest drivers/software, please visit www.startech.com/downloads

Warranty Information

This product is backed by a three year warranty.

In addition, StarTech.com warrants its products against defects in materials and workmanship for the periods noted, following the initial date of purchase. During this period, the products may be returned for repair, or replacement with equivalent products at our discretion. The warranty covers parts and labor costs only. StarTech.com does not warrant its products from defects or damages arising from misuse, abuse, alteration, or normal wear and tear.

Limitation of Liability

In no event shall the liability of StarTech.com Ltd. and StarTech.com USA LLP (or their officers, directors, employees or agents) for any damages (whether direct or indirect, special, punitive, incidental, consequential, or otherwise), loss of profits, loss of business, or any pecuniary loss, arising out of or related to the use of the product exceed the actual price paid for the product. Some states do not allow the exclusion or limitation of incidental or consequential damages. If such laws apply, the limitations or exclusions contained in this statement may not apply to you.

Hard-to-find made easy. At StarTech.com, that isn't a slogan. It's a promise.

StarTech.com is your one-stop source for every connectivity part you need. From the latest technology to legacy products — and all the parts that bridge the old and new — we can help you find the parts that connect your solutions.

We make it easy to locate the parts, and we quickly deliver them wherever they need to go. Just talk to one of our tech advisors or visit our website. You'll be connected to the products you need in no time.

Visit www.startech.com for complete information on all StarTech.com products and to access exclusive resources and time-saving tools.

StarTech.com is an ISO 9001 Registered manufacturer of connectivity and technology parts. StarTech.com was founded in 1985 and has operations in the United States, Canada, the United Kingdom and Taiwan servicing a worldwide market.