

Free-Standing Cast Iron Radiators

Product Guide



Slenderized



Radiant



Classic

Installer Highlights

- Cast iron reliability and durability
- Water or steam
- Slenderized & Radiant models are pre-primed (water-based latex) for immediate top-coat paint finishing (premium oil or solvent -based)
- Classic models are pre-painted
- Residential or commercial

Homeowner Benefits

- Cast iron offers both convective and radiant heat, providing even heating comfort throughout the room
- Virtually silent operation, does not have the expansion noises associated with "light duty" radiator systems
- Rugged cast iron construction

Slenderized

Size (Sections)	Length 1-3/4" per Sections (inches)	Square Feet - EDR*		
		4-Tube		6-Tube
		19" High	25" High	25" High
4	7"	6.4	8	12
6	10-1/2"	9.6	12	18
8	14"	12.8	16	24
10	17-1/2"	16.0	20	30
12	21"	19.2	24	36
14	24-1/2"	22.4	28	42
16	28"	25.6	32	48
18	31-1/2"	28.8	36	54
20	35"	32.0	40	60
22	38-1/2"	35.2	44	66
24	42"	38.4	48	72
26	45-1/2"	41.6	52	78
28	49"	44.8	56	84
30	52-1/2"	48.0	60	90
32	56"	51.2	64	96
34	59-1/2"	54.4	68	102
36	63"	57.6	72	108
38	66-1/2"	60.8	76	114
40	70"	64.0	80	120
42	73-1/2"	67.2	84	126
44	77"	70.4	88	132
46	80-1/2"	73.6	92	138
48	84"	76.8	96	144

* Heating surface based upon the standard heat emission of 240 BTU per square foot per hour.
 Add 1/2" for each bushing.
 Center leg section furnished on 30 section and better.
 Furnished in even number section up to 48 sections.
 Maximum allowable working pressure - 30 PSI, water; 15 PSI steam.
 Consult factory for higher pressure. Allow 1" clearance from wall.
 Water content - 4x19-0.08 Gal./section; 4x25-.012 Gal./section;
 6x26-.017 Gal./section

RATINGS PER SECTION			
Steam	4 x 19	4 x 25	6 x 25
		384 BTU	480 BTU
Water Temp at °F	4 x 19	4 x 25	6 x 25
	220	400 BTU	500 BTU
215	384 BTU	480 BTU	720 BTU
210	368 BTU	460 BTU	690 BTU
200	336 BTU	420 BTU	630 BTU
190	304 BTU	380 BTU	570 BTU
180	272 BTU	340 BTU	510 BTU
170	240 BTU	300 BTU	450 BTU
160	208 BTU	260 BTU	390 BTU
150	176 BTU	220 BTU	330 BTU

FEDERAL - OLD STYLE COLUMN					
RATING - Square Feet Per Section					
Height	1 Col. 2-1/2" ctr.	2 Col. 2-1/2" ctr.	3 Col. 2-1/2" ctr.	4 Col. 3" ctr.	5 Col. 3" ctr.
14"	—	—	—	—	4.00
17"	—	—	—	—	4.00
18"	—	—	2.25	3.00	5.00
20"	1.50	2.00	—	—	5.00
22"	—	—	3.00	4.00	6.00
23"	—	—	—	—	—
26"	1.67	2.33	—	—	—
28"	2.00	2.67	3.75	5.00	—
32"	2.50	3.33	4.50	6.50	—
38"	3.00	4.00	5.00	8.00	—
44"	—	—	—	10.00	—
45"	—	5.00	6.00	—	—



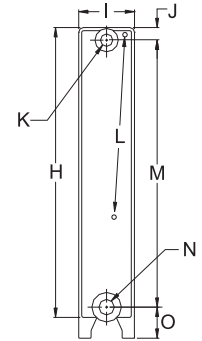
SLENDERIZED MODEL NUMBER DESIGNATION (All designations listed, sample model number info in bold)				
Sample Model No.	Type*	Sections	Assembly Type	End Section Legs
4X2522CG	4X25 6X25 4X19	22 (4-48)	C = Complete I = Intermediate R = Return End w/conn. A = Inter Sub Assy.	G = With Legs L = No Legs

*Type = number of tubes x height in inches, includes plugs and/or bushings for all tappings

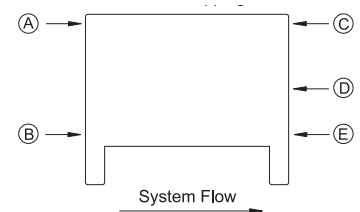
DIMENSIONS								
Type	H	I	J	K	L	M	N	O
6X25	23-13/16"	6-15/16"	1-1/16"	1"	1/8"	21-7/16"	1-1/4"	2-1/2"
4X25	23-13/16"	4-7/16"	1-1/16"	1"	1/8"	21-7/16"	1-1/4"	2-1/2"
4X19	17-13/16"	4-7/16"	1-1/16"	1"	1/8"	15-7/16"	1-1/4"	2-1/2"

NPT NPT NPT

* Plug + Alternate



TAPPINGS					
	A	B	C	D	E
1 Pipe Steam	*	supply	+vent	vent	*
2 Pipe Steam	supply	+supply	*	*	return
Hot Water	*	supply	vent	*	return



Special Accessories and Fittings

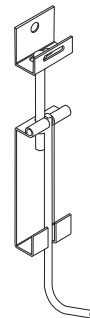
- 8084301 Adjustable Brackets (2 per radiator, illustrated below)
- 8074301 Pedestals, 2"

Common Accessories and Fittings

- 105510-01 Slip Nipple
- 806603512 3/4" Plug
- 806603536 1" Plug
- 806603537 1-1/4" Plug
- 806600501 1" x 3/4" Bushing
- 806600504 1-1/4" x 3/4" Bushing
- 806600505 1-1/4" x 1/2" Bushing

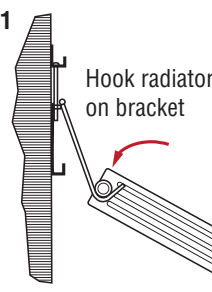
Adjustable Bracket

For wall mounting

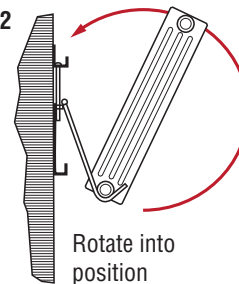


Mounting on Adjustable Bracket

Step 1

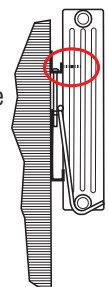


Step 2



Step 3

Secure with bolt



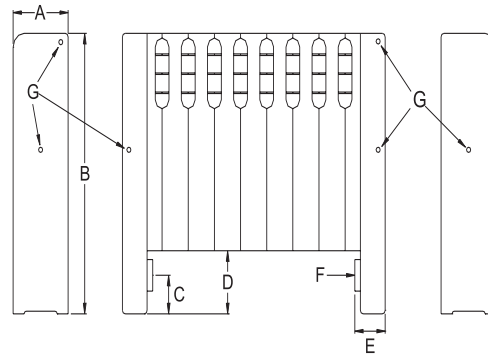
Radiant

Size - Number of Sections	Length 2-1/4" per Section (inches)	Free Standing EDR*, Square Feet per Section 2.25
4	9"	9.0
6	13-1/2"	13.5
8	18"	18.0
10	22-1/2"	22.5
12	27"	27.0
14	31-1/2"	31.5
16	36"	36.0
18	40-1/2"	40.5
20	45"	45.0
22	49-1/2"	49.5
24	54"	54.0
26	58-1/2"	58.5
28	63"	63.0
30	67-1/2"	67.5
32	72"	72.0
34	76-1/2"	76.5
36	81"	81.0
38	85-1/2"	85.5
40	90"	90.0
42	94-1/2"	94.5
44	99"	99.0



RADIANT MODEL NUMBER DESIGNATION (All designations listed, sample model number info in bold)				
Sample Model No.	Type	Sections	Grille Type	Section Type
20X544GC	20X5	44 4-44 (even numbers)	G = W/Grille others discontinued	C = Complete others discontinued

Includes plugs and/or bushings for all tappings



DIMENSIONS						
A	B	C	D	E	F	G*
5"	20"	2-3/4"	4-1/2"	1-7/8"	1-1/4"	1/8"

*Vent tapping sizes; high vents for water, NPT NPT
mid-height vents for one pipe steam

*Increase radiator size 10% when recessed.

Recess guideline: 1/2"+ longer, 1/2"+ higher than radiator

Heating surface based upon the standard heat emission of 240 BTU per square foot per hour.

Furnished in even number of sections up to 44 sections.

Maximum allowable working pressure - 30 PSI, water;

15 PSI, steam.

Water content - 0.15 Gal./section

RATINGS PER SECTION	
Steam	540 BTUH

Water Temp at °F	
220	562 BTU
215	540 BTU
210	517 BTU
200	472 BTU
190	427 BTU
180	382 BTU
170	337 BTU
160	292 BTU
150	247 BTU

Common Accessories and Fittings

105510-01	Slip Nipple
806603512	3/4" Plug
806603536	1" Plug
806603537	1-1/4" Plug
806600501	1" x 3/4" Bushing
806600504	1-1/4" x 3/4" Bushing
806600505	1-1/4" x 1/2" Bushing

Special Accessories and Fittings

70742*	Snap-on Grille (per section)
*04 to 30	add two end digits for size
8084201	Pins for Grille
6084201	Clips for Grille

Count of pins/clips required:
4 -18 sections: 2 pins/2 clips
20 -30 sections: 2 pins/3 clips

Classic

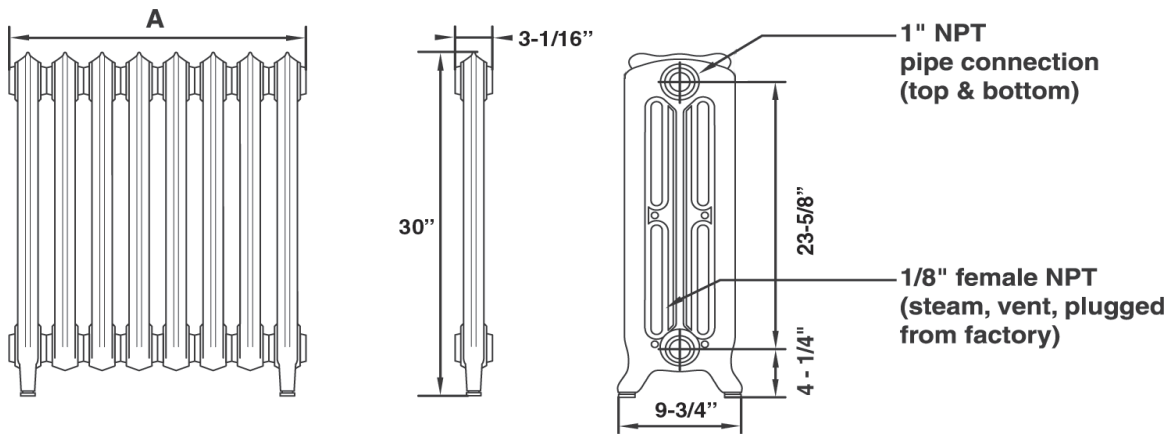
Pre-painted with threaded nipple connections

Features “British” thread tappings

Brass valves are optional, see chart below for ordering information



MODEL NUMBER DESIGNATION (All designations listed, sample model number info in bold)			
Sample Number	Size	Height Designator	Build Type
CR330CFS	CR3 Sections (3-9)	30	CFS –Complete AFS –Intermediate



Item Number	Section Type	Number of Sections	Steam		Water	A Length (in.)	Shipping Weight (lbs.)
			Sq. Ft. EDR*	Ratings BTU/hr.	Ratings BTU/hr.		
CR330CFS	Complete	3	11	2550	1597	9.1	93
CR530CFS	Complete	5	18	4250	2662	15.2	151
CR730CFS	Complete	7	25	5950	3727	21.3	208
CR930CFS	Complete	9	32	7650	4792	27.4	265
CR530AFS	5-Intermediate**	5	18	4250	2662	15.2	151
107929-01	End section w/ vent	1	4	850	532	3.0	31

*Equivalence of direct radiation of heating surface based upon the standard heat emission of 240 BTU per square foot per hour.

** 5-Intermediate is used to expand radiators to longer sizes. See disassembly/assembly instructions.

Stock sizes available for immediate shipment. Assemble 5 section intermediate with 3, 5, 7 or 9 section stock size to make a custom size. End section with vent is also used as intermediate leg support for radiators with more than 16 sections.

Water volume per section (gallons): 0.51
 Normal operating pressure - water (psi): 116
 Max pressure - water (psi): 145
 Max pressure - steam (psi): 29

Valves & Accessories

8054005	Brass Isolation Valve*
8054006	Brass Balancing Valve*
104531-01	3/4" Bushing Kit (left)
104527-01	3/4" Bushing Kit (right)
104532-01	1" Bushing Kit (left)
104528-01	1" Bushing Kit (right)
107643-01	Nipple Kit
104530-01	1-1/4" Plug Kit (left)
104526-01	1-1/4" Plug Kit (right)
107564-01	Assembly Tool

* Brass valves are functional and decorative

For additional reference, see the “Classic Radiator Calculator” tool, available online at www.usboiler.net/classicorderingguide

or refer to document: Assembly/Disassembly Instructions (107555-02)