



**Type of *Conophytum diversum* N.E.Br. [family  
MESEMBRYANTHEMACEAE]**

<http://www.aluka.org/action/showMetadata?doi=10.5555/AL.AP.SPECIMEN.BOL130818>

---

Use of the Aluka digital library is subject to Aluka's Terms and Conditions, available at <http://www.aluka.org/page/about/termsConditions.jsp>. By using Aluka, you agree that you have read and will abide by the Terms and Conditions. Among other things, the Terms and Conditions provide that the content in the Aluka digital library is only for personal, non-commercial use by authorized users of Aluka in connection with research, scholarship, and education.

The content in the Aluka digital library is subject to copyright, with the exception of certain governmental works and very old materials that may be in the public domain under applicable law. Permission must be sought from Aluka and/or the applicable copyright holder in connection with any duplication or distribution of these materials where required by applicable law.

---

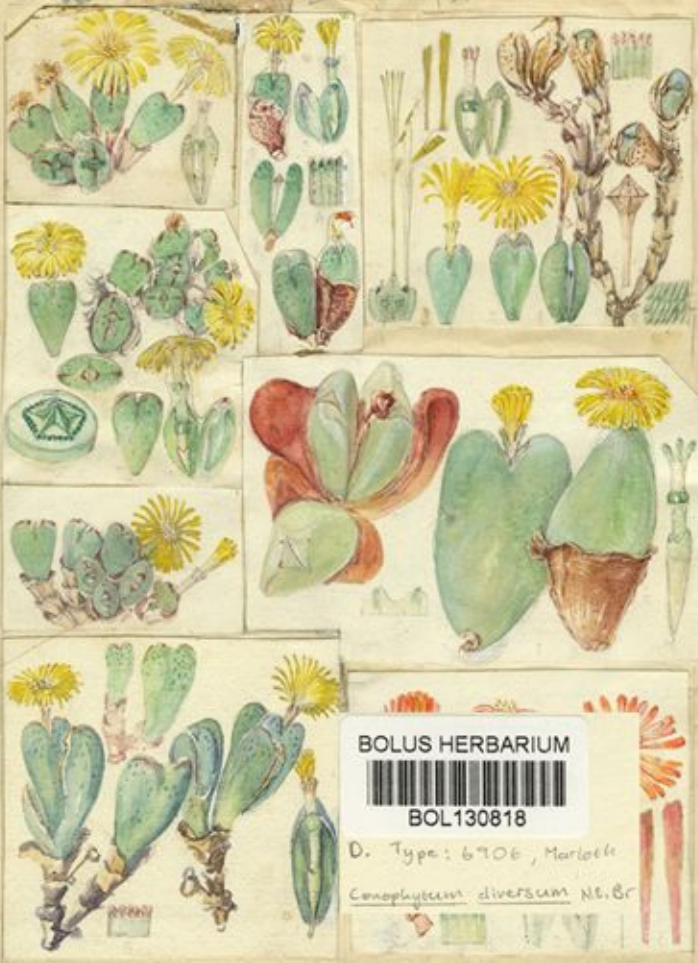
Aluka is a not-for-profit initiative dedicated to creating and preserving a digital archive of materials about and from the developing world. For more information about Aluka, please see <http://www.aluka.org>

**Type of Conophytum diversum N.E.Br. [family MESEMBRYANTHEMACEAE]**

Collector	Marloth, R., No# 6906
Collection date	1925/3
Locality	Namaqualand, Steinkopf. Near Anenous Pass.
Country	South Africa (South Africa)
Collection altitude	500ft
Identifications	Type of Conophytum diversum N.E.Br. [family MESEMBRYANTHEMACEAE]; Conophytum bilobum (Marloth) N.E.Br. [family MESEMBRYANTHEMACEAE] (stored under name);
Repository	The Bolus Herbarium, Botany Department, University of Cape Town, South Africa, BOL130818
Data last modified	2005-05-03

<http://www.aluka.org/action/showMetadata?doi=10.5555/AL.AP.SPECIMEN.BOL130818>

Plate III *Asplenium, Adiantum* 16



A  
*Asplenium*  
Type  
B.H. 21969

B  
*Asplenium*  
Type  
H. 2223  
C. Campden

C  
*Asplenium*  
Type  
3. 2111  
H. 2223

D  
Type  
H. 2223  
C. Campden

BOLUS HERBARIUM



BOL130818

D. Type: 6706, Marloth  
*Conophytum diversum* N.E.Br.

*Asplenium*  
Type

Plate 36-B

H. O. Carter del.  
PLATE 36.—A. B. C. *CONOPHYTUM LAFRUCI* L. BOL. D. C. *DIVERSUM* N. E. BR. E. C. *sp.* F. C. *RANDOLPHI* LAVIS.  
G. C. *AMPLUM* L. BOL. H. C. *SALMONICOLOR* L. BOL.

