



WELCOME TO
Haarwegskloof Renosterveld Reserve
&
Research and Visitor Centre

The Overberg Renosterveld Conservation Trust

The **Overberg Renosterveld Conservation Trust** is a Non-Profit Organisation dedicated to saving Renosterveld habitats in the Overberg wheat belt. By collaborating with our partners, in both the NGO and government sectors, we are working towards establishing relationships with farmers who understand the importance of conserving and managing remnants of natural vegetation – the life blood of the wheat belt, and the reservoirs for insuring the future of biodiversity and ecosystem well-being into the future. The ORCT was established in April 2012, because the need for an NPO dedicated solely towards conservation in the Rûens was realized. The Trust is governed by a small Board of Trustees and the Chair of this board, Dirk van Papendorp, is a commercial farmer in the region. The ORCT is directed by Dr Odette Curtis, an ecologist with a passion for Renosterveld conservation and over 10 years of experience in working with Overberg farmers.

The beautiful Renosterveld Reserve known as Haarwegskloof is a very special place: it forms part of the largest and most contiguous stretch of Renosterveld left in the world and it contains many rare and endemic species. WWF-SA (World Wildlife Fund, South Africa) purchased this farm in late 2013 and handed it to the Overberg Renosterveld Conservation Trust for management and care-taking. The ORCT has since renovated infrastructure on the homestead and established the first-ever Renosterveld and Visitor Centre. We are extremely proud to share this incredible gem with you.

Please visit our website to learn more about the work we do, and feel free to contact us should you have any queries.

Website: www.overbergrenosterveld.org.za

Contacts: Director: Dr Odette Curtis: info@overbergrenosterveld.org.za, 083 551 3341

Bookings for the Renosterveld Centre through Sharon King:
bookings@overbergrenosterveld.org.za

NPO # 124-296



Above, from left to right: ORCT Board of Trustees: Dirk van Papendorp (Chair, farmer), Lesley Richardson (Vice-Chair, CEO of Flower Valley Conservation Trust), Prof Muthama Muasya (Senior Researcher, UCT) and Sean Privett (ecologist & Fynbos guide).



Above, from left to right: ORCT staff: Dr Odette Curtis (Director), Jannie Groenewald (Reserve & Centre Manager), Sharon King (PA to Director) & Keir Lynch (Manager: Watercourse Restoration Project).

Activities on the Reserve



Here are some of the activities that you can enjoy on our reserve:

- Go bird-watching (see our species inventory for the bird list we have thus far and please feel free to assist us with updating this and the other species lists).
- Go for a walk on the Reserve and explore our kloofs with their forest and thicket and our koppies with their beautiful quartz patches (see accompanying maps for potential walks).
- Take yourself on a walk through our largest quartz patch, with all its special species: this walk is marked with signs which tell you about some of the most special plants along this route.
- Take a cycle down any of the public roads on and around the reserve.
- Check camera traps with Jannie, our Reserve Manager, if and when he is doing so.
- Lend a post-graduate student a hand in the field.
- Chill on the patio, or next to our little pool to cool off in summer.
- Spend time in our little library.
- Breathe. Rest. Relax. Sleep.
- Braai.





INFORMATION FOR GUESTS VISITING THE RENOSTERVELD CENTRE

Welcome to our Renosterveld Centre and Reserve! We are very happy to be able to share this special place with you – we hope your experience will be a memorable one. As you may have noticed, this Centre is not your typical self-catering guest-house. This homestead is used by post-graduate students as a base for their research and field-work, while we are also open for guests who wish to experience the renosterveld and surrounds. If there are students on the reserve undertaking field work, you are welcome to ask to accompany them on trips. Jannie Groenewald, our Reserve Manager, is an excellent ecologist and is occasionally available for a guided walk (minimum R100 per person donation). Naturally, being an NGO, we are seeking innovative ways in which to cover the costs associated with the upkeep and management of this Centre and Nature Reserve. We charge the minimum rates that we are able to charge – you are welcome to visit our website and contact us, should you wish to contribute through anything additional! 😊

This booklet is aimed at providing you with more detailed information on the Overberg Renosterveld Conservation Trust, the Reserve Centre, as well as other activities that you might enjoy in the area.

A few important Rules:

- Please do not litter or smoke in the veld.
- No dogs allowed in the Reserve.
- Please take your recycling with you, as we do not have any recycling depots close-by, so this will be of great help to us.



Places of interest outside the Renosterveld Reserve

DE HOOP NATURE RESERVE



De Hoop Nature Reserve (De Hoop Collection)

Distance from Haarwegskloof: ±15 km

De Hoop Nature Reserve is a CapeNature-owned, coastal Reserve and is one of the jewels of the Cape. It comprises beautiful limestone ridges covered with fynbos, as well as wetlands, coastal dunes and strandveld vegetation. De Hoop is also home to several reintroduced large game species, including Bontebok, Hartebest and Cape Mountain Zebra. It is one of the most spectacular sites for watching whales (July to November).

There is a restaurant serving lunches on the Reserve, or you can take a picnic.

Potberg forms part of the De Hoop Nature Reserve. It is the home of the only Cape Vulture colony in the Western Cape.

Malgas

Distance from Haarwegskloof: ±35 km



The little town of Malgas is set on the western bank of the Breede River. Malgas is known best as the town with the last surviving hand-driven river pont in operation in the country. One can still negotiate the Breede River by pont between the east and west banks at Malgas today.

The area is a nature lover's paradise, particularly for fishing and bird watching, as the estuary of the Breede River sustains an abundance of fish, including Cob, Spotted Grunter and Garrick, and attracts fish eagles, ospreys, and kingfishers. There are a couple of small pubs in the village which are also fun to visit.

Sijnn Wines

Distance from Haarwegskloof: ± 35 km

SIJNN



Sijnn (Pronounced Say-N) vineyards are situated between the tiny hamlet of Malgas and Cape Infanta, at the mouth of the Breede River – called Sijnn by the original Khoisan inhabitants. Perched on a plateau of schist and rolled stones, about 15km from the southern oceans of Africa. All of the vines are grown as bush vines with most of them planted in 2004 and 2005. The vines grow in a natural way adapting to their environment with a gentle helping hand. These natural, handcrafted wines are fermented with indigenous yeasts, barrel matured and bottled unfiltered. Made by David Trafford (CWG winemaker) and his team in Malgas. Sijnn have also set aside some beautiful renosterveld on their farm for conservation and are IPW and BWI approved. They also practice near-organic, natural farming.



Places of interest outside the Renosterveld Reserve

Swellendam

Distance from Haarwegskloof: ±40 km



Swellendam prides itself on its sense of community, unity, art, music, good food, and beauty. The towns and villages that make up the Greater Swellendam Area are Swellendam, Suurbraak, Barrydale, Buffeljags, Stormsvlei, Malagas and Cape Infanta – each has its own very special identity.

There are many beautiful Nature Reserves in the vicinity of Swellendam, including Marloth on the edge of the town, Bontebok National Park just south of the town and Grootvadersbosch in the Suurbraak area.



Bredasdorp

Distance from Haarwegskloof: ±40 km

Bredasdorp is a useful town to visit, if you need to stock up on groceries, etc. It is also worth visiting Kapula Candles and the Shipwreck Museum.

Only ± 23 km from Bredasdorp lies the fishing village of **Arniston** a picturesque little village, characterized by its lime-washed and thatched houses. Fishermen still go to sea in boats of the style that would have been familiar to locals in the early nineteenth century, although now under contract to larger commercial enterprises. Whale watching is a popular tourist activity here and the beaches are breathtakingly beautiful.

One can also visit the beautiful **De Mond Nature Reserve**, which is located on the mouth / estuary of the Heuningnes River.

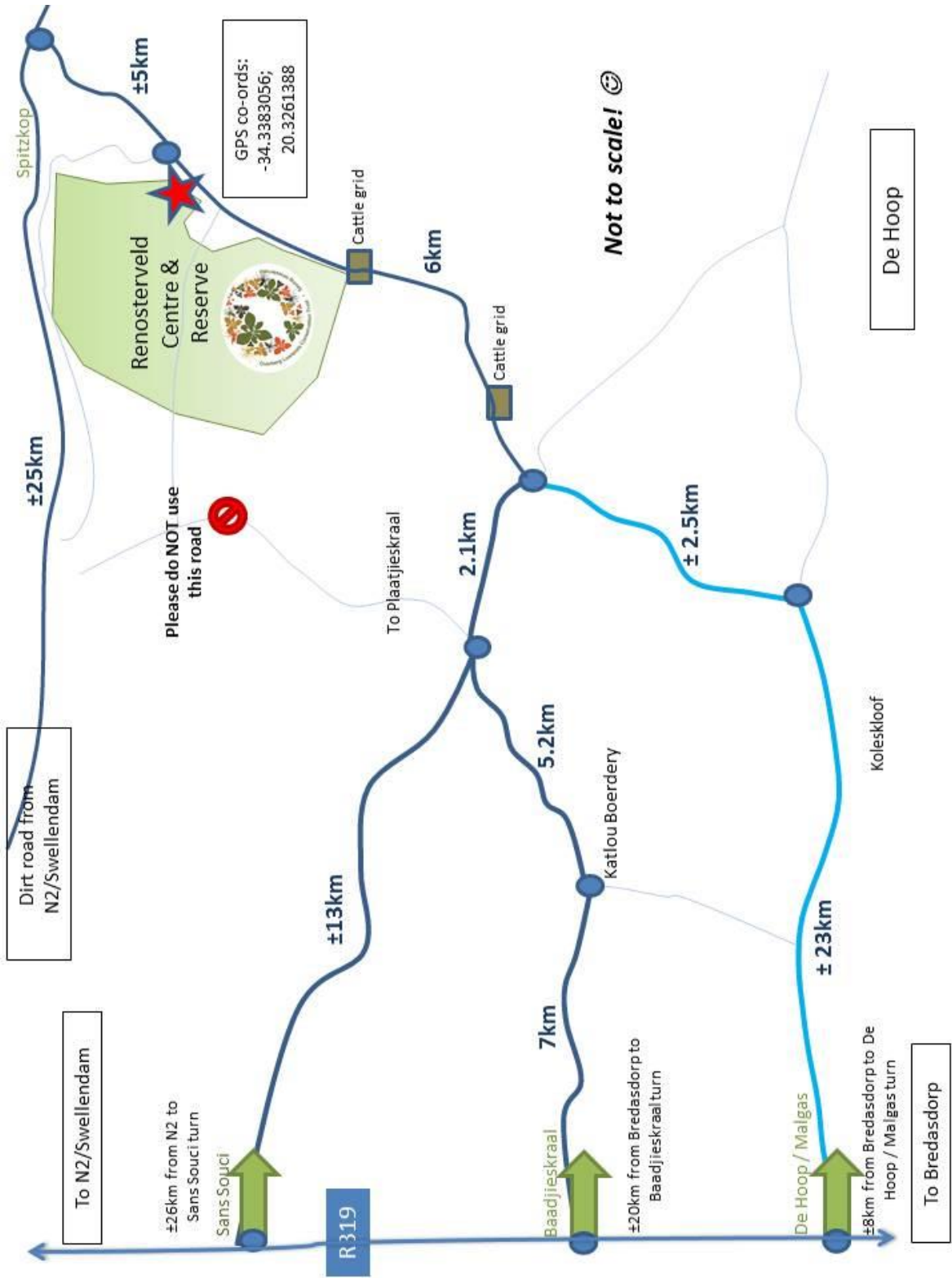
Napier

Distance from Haarwegskloof: ±55km (15km west of Bredasdorp)

Napier is a charming little village nestled below the Kleinberg mountain. It has several coffee shops and restaurants and much charm!



Map showing the location of Haarwegskloof relative to the surrounding landscape



BIODIVERSITY INVENTORY

Haarwegskloof Renosterveld Reserve



Compiled by the Overberg Renosterveld
Conservation Trust
Authors: O. E. Curtis & J. P. Groenewald

HISTORY & BACKGROUND: Haarwegskloof

In late 2013, after almost five years of negotiations, WWF-SA purchased the farm from the previous owners in order to ensure its protection in perpetuity. The Overberg Renosterveld Conservation Trust (ORCT) was designated as the Management Authority on this property and Fauna and Flora International in the UK (FFI) provided funding for the initial management planning and interventions, as well as the Nature Reserve declaration (through CapeNature's Stewardship Programme).

In 2014, the ORCT raised sufficient funds to restore the existing homestead and establish the first-ever Renosterveld Research & Visitor Centre. It is planned that this Reserve and Centre will become a flagship locality for renosterveld conservation in the Overberg and the world. The Centre will be a hub for post-graduate students to carry out research on the Overberg's renosterveld, while also providing ecotourism and education opportunities which will i) grow awareness about the plight of renosterveld and ii) generate an income for the ORCT so that management becomes more sustainable.

This species inventory is a dynamic document that will be grown and extended as more experts on the various taxa spend time at the Centre / Reserve and contribute towards expanding our knowledge of the species that occur in this special place.

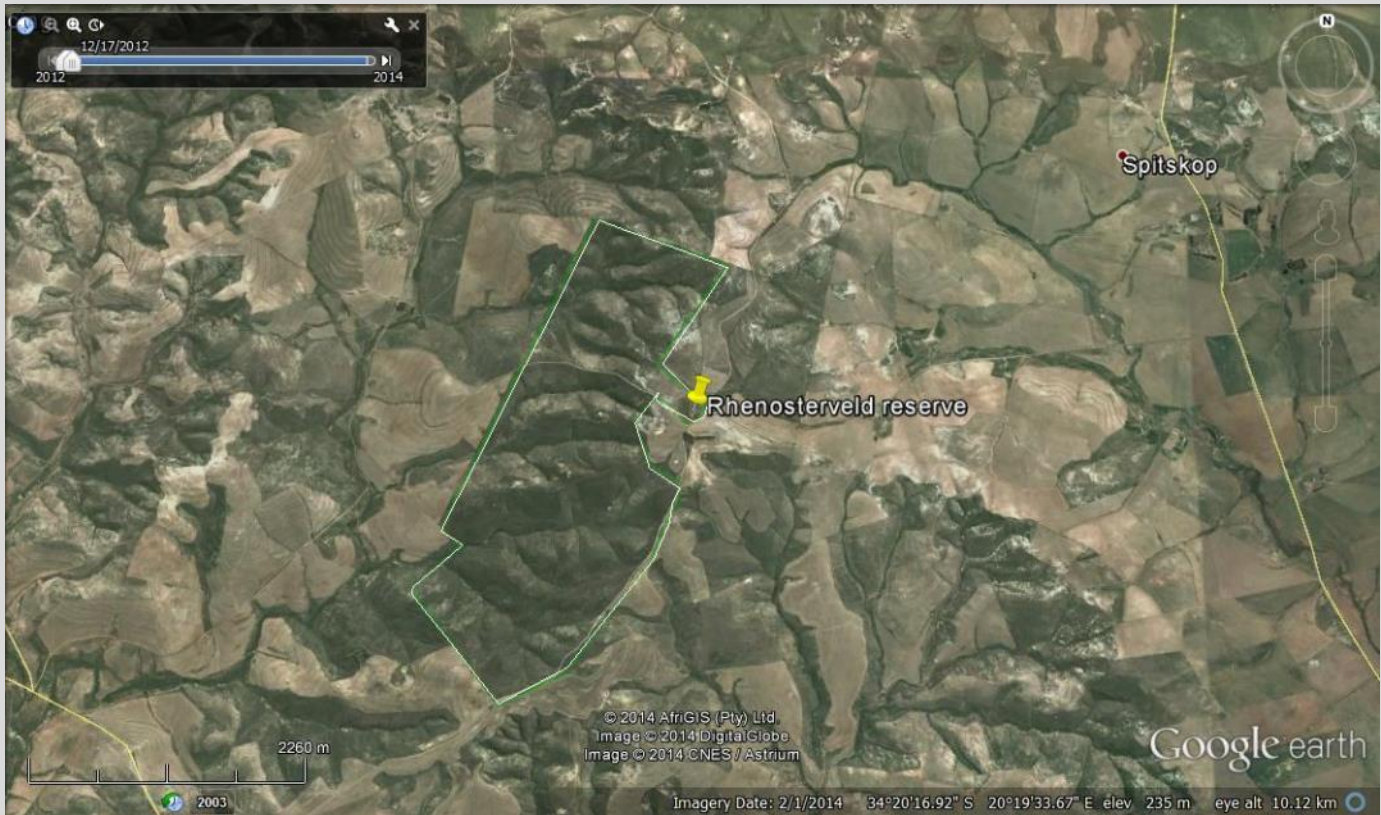
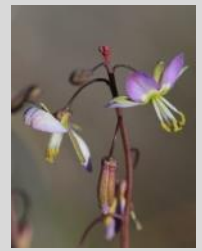


THE CONSERVATION SIGNIFICANCE OF HAARWEGSKLOOF

Haarwegskloof, together with its two neighbours, Luiperdskop and Plaatjieskraal, comprises the largest and most contiguous extant lowland Renosterveld that remains in the Overberg and essentially, on Earth. Together these three properties comprise about 1500 ha Eastern Rûens Shale Renosterveld. Haarwegskloof is about 500ha in size, with about 80% being virgin land, the remainder being previously ploughed (recovering) lands. The Reserve contains a substantial diversity of species and particularly, many rare and threatened birds and plants.

MAP & CONTEXT

The map below shows the extent and shape of Haarwegskloof and the location of the Renosterveld Centre.



Haarwegskloof & neighbours



Map above denotes the remnant renosterveld in the Overberg and the positioning of Haarwegskloof and its neighbours, demonstrating the relevance of this Reserve in the landscape context.

METHODS USED FOR COLLATING THE INVENTORY



Birds

Opportunistic, random surveys, using visual recordings and calls.



Plants

Data collected in previous years were used to start the database. After this, lists made on random surveys were used to add to the database.



Mammals

Mammal data were collected through opportunistic sightings and camera traps. Small mammals were trapped (alive) with live Sherman traps and trap arrays.



Reptiles

Reptile data were mostly collected opportunistically, based on random sightings.



Amphibians

Amphibian data were mostly collected opportunistically, based on calls and sightings, while some were also captured in trap arrays.



Spiders & Scorpions

Spiders and scorpions were identified opportunistically, through active searching and the use of trap arrays.



Invertebrates

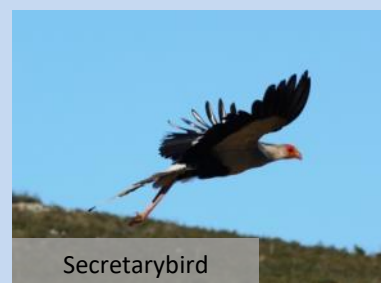
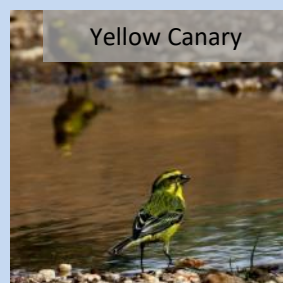
Invertebrate data were collected opportunistically, through sweep-netting and pitfall traps.



BIRDS



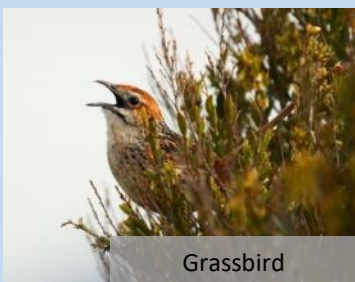
Common name	Species	Status (National)
Acacia Pied Barbet	<i>Tricholaema leucomelas</i>	
African Dusky Flycatcher	<i>Muscicapa adusta</i>	
African Fish-Eagle	<i>Haliaeetus vocifer</i>	
African Hoopoe	<i>Upupa africana</i>	
African Pipit	<i>Anthus cinnamomeus</i>	
African Sacred Ibis	<i>Threskiornis aethiopicus</i>	
African Spoonbill	<i>Platalea alba</i>	
African Stonechat	<i>Saxicola torquatus</i>	
Agulhas Long-billed Lark	<i>Certhilauda brevirostris</i>	NT
Alpine Swift	<i>Tachymarptis melba</i>	
Barn Owl	<i>Tyto alba</i>	
Barn Swallow	<i>Hirundo rustica</i>	
Bar-throated Apalis	<i>Apalis thoracica</i>	
Black Harrier	<i>Circus maurus</i>	EN
Black Saw-wing	<i>Psalidoprocne holomelaena</i>	
Black Sparrowhawk	<i>Accipiter melanoleucus</i>	
Black-headed Heron	<i>Ardea melanocephala</i>	
Blacksmith Lapwing	<i>Vanellus armatus</i>	
Blue Crane	<i>Anthropoides paradiseus</i>	NT
Bokmakierie Bokmakierie	<i>Telophorus zeylonus</i>	
Booted Eagle	<i>Aquila pennatus</i>	
Brimstone Canary	<i>Crithagra sulphuratus</i>	
Burchell's Coucal	<i>Centropus burchellii</i>	
Cape Batis	<i>Batis capensis</i>	
Cape Bulbul	<i>Pycnonotus capensis</i>	
Cape Bunting	<i>Emberiza capensis</i>	
Cape Canary	<i>Serinus canicollis</i>	
Cape Clapper Lark	<i>Mirafra apiata</i>	
Cape Crow	<i>Corvus capensis</i>	
Cape Grassbird	<i>Sphenoeacus afer</i>	
Cape Long-billed Lark	<i>Certhilauda curvirostris</i>	
Cape Longclaw	<i>Macronyx capensis</i>	



BIRDS continued



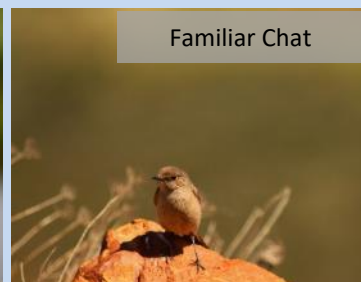
Common name	Species	Status (National)
Cape Robin-Chat	<i>Cossypha caffra</i>	
Cape Sparrow	<i>Passer melanurus</i>	
Cape Spurfowl	<i>Pternistis capensis</i>	
Cape Sugarbird	<i>Promerops cafer</i>	
Cape Turtle-Dove	<i>Streptopelia capicola</i>	
Cape Vulture	<i>Gyps coprotheres</i>	EN
Cape Wagtail	<i>Motacilla capensis</i>	
Cape Weaver	<i>Ploceus capensis</i>	
Cape White-eye	<i>Zosterops virens</i>	
Capped Wheatear	<i>Oenanthe pileata</i>	
Cardinal Woodpecker	<i>Dendropicos fuscescens</i>	
Cattle Egret	<i>Bubulcus ibis</i>	
Cloud Cisticola	<i>Cisticola textrix</i>	
Common Fiscal	<i>Lanius collaris</i>	
Common House-Martin	<i>Delichon urbicum</i>	
Common Ostrich	<i>Struthio camelus</i>	
Common Quail	<i>Coturnix coturnix</i>	
Common Starling	<i>Sturnus vulgaris</i>	
Common Waxbill	<i>Estrilda astrild</i>	
Crowned Lapwing	<i>Vanellus coronatus</i>	
Cape Robin-Chat	<i>Cossypha caffra</i>	
Cape Sparrow	<i>Passer melanurus</i>	
Cape Spurfowl	<i>Pternistis capensis</i>	
Cape Sugarbird	<i>Promerops cafer</i>	
Cape Turtle-Dove	<i>Streptopelia capicola</i>	
Cape Vulture	<i>Gyps coprotheres</i>	EN



Grassbird



Cape Bunting

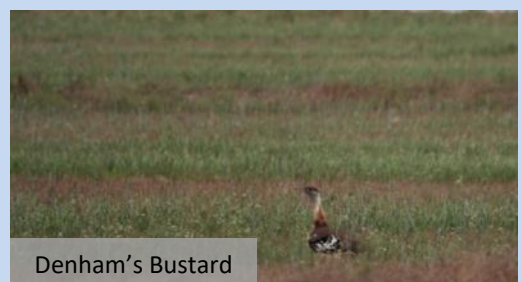


Familiar Chat

BIRDS continued



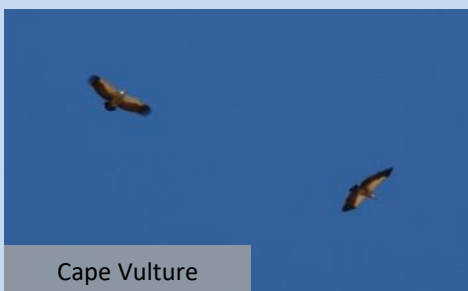
Common name	Species	Status (National)
Cape Wagtail	<i>Motacilla capensis</i>	
Cape Weaver	<i>Ploceus capensis</i>	
Cape White-eye	<i>Zosterops virens</i>	
Capped Wheatear	<i>Oenanthe pileata</i>	
Cardinal Woodpecker	<i>Dendropicos fuscescens</i>	
Cattle Egret	<i>Bubulcus ibis</i>	
Cloud Cisticola	<i>Cisticola textrix</i>	
Common Fiscal	<i>Lanius collaris</i>	
Common House-Martin	<i>Delichon urbicum</i>	
Common Ostrich	<i>Struthio camelus</i>	
Common Quail	<i>Coturnix coturnix</i>	
Common Starling	<i>Sturnus vulgaris</i>	
Common Waxbill	<i>Estrilda astrild</i>	
Crowned Lapwing	<i>Vanellus coronatus</i>	
Denham's Bustard	<i>Neotis denhami</i>	VU
Egyptian Goose	<i>Alopochen aegyptiacus</i>	
European Bee-eater	<i>Merops apiaster</i>	
Familiar Chat	<i>Cercomela familiaris</i>	
Fiery-necked Nightjar	<i>Caprimulgus pectoralis</i>	
Fiscal Flycatcher	<i>Sigelus silens</i>	
Fork-tailed Drongo	<i>Dicrurus adsimilis</i>	
Greater Double-collared Sunbird	<i>Cinnyris afer</i>	
Greater Honeyguide	<i>Indicator indicator</i>	
Greater Striped Swallow	<i>Hirundo cucullata</i>	
Grey Heron	<i>Ardea cinerea</i>	
Grey Tit	<i>Parus afer</i>	
Grey-backed Cisticola	<i>Cisticola subruficapilla</i>	
Grey-winged Francolin	<i>Scleroptila africanus</i>	
Hadedda Ibis	<i>Bostrychia hagedash</i>	
Hamerkop	<i>Scopus umbretta</i>	
Helmeted Guineafowl	<i>Numida meleagris</i>	



BIRDS continued



Common name	Species	Status (National)
House Sparrow	<i>Passer domesticus</i>	
Jackal Buzzard	<i>Buteo rufofuscus</i>	
Karoo Korhaan	<i>Eupodotis vigorsii</i>	NT
Karoo Prinia	<i>Prinia maculosa</i>	
Karoo Scrub-Robin	<i>Cercotrichas coryphoeus</i>	
Kelp Gull	<i>Larus dominicanus</i>	
Klaas's Cuckoo	<i>Chrysococcyx klaas</i>	
Lanners Falcon	<i>Falco biarmicus</i>	VU
Large-billed Lark	<i>Galerida magnirostris</i>	
Laughing Dove	<i>Streptopelia senegalensis</i>	
Lesser Kestrel	<i>Falco naumanni</i>	
Little Swift	<i>Apus affinis</i>	
Long-billed Pipit	<i>Anthus similis</i>	
Malachite Sunbird	<i>Nectarinia famosa</i>	
Namaqua Dove	<i>Oena capensis</i>	
Neddicky Neddicky	<i>Cisticola fulvicapilla</i>	
Peafowl	<i>Pavo cristatus</i>	
Pied Crow	<i>Corvus albus</i>	
Pied Starling	<i>Spreo bicolor</i>	
Red-capped Lark	<i>Calandrella cinerea</i>	
Red-chested Cuckoo	<i>Cuculus solitarius</i>	
Red-eyed Dove	<i>Streptopelia semitorquata</i>	
Red-faced Mousebird	<i>Urocolius indicus</i>	
Red-winged Starling	<i>Onychognathus morio</i>	
Rock Dove	<i>Columba livia</i>	
Rock Kestrel	<i>Falco rupicolus</i>	
Rock Martin	<i>Hirundo fuligula</i>	
Secretarybird	<i>Sagittarius serpentarius</i>	VU
Sombre Greenbul	<i>Andropadus importunus</i>	
Sooty Falcon	<i>Falco concolor</i>	NT
Southern Black Korhaan	<i>Eupodotis afra</i>	VU



Cape Vulture



Sacred Ibis

BIRDS continued



Common name	Species	Status (National)
Southern Double-collared Sunbird	<i>Cinnyris chalybeus</i>	
Southern Grey-headed Sparrow	<i>Passer diffusus</i>	
Southern Masked-Weaver	<i>Ploceus velatus</i>	
Southern Pale Chanting Goshawk	<i>Melierax canorus</i>	
Southern Red Bishop	<i>Euplectes orix</i>	
Southern Tchagra	<i>Tchagra tchagra</i>	
Speckled Mousebird	<i>Colius striatus</i>	
Speckled Pigeon	<i>Columba guinea</i>	
Spotted Eagle-Owl	<i>Bubo africanus</i>	
Spotted Thick-knee	<i>Burhinus capensis</i>	
Spur-winged Goose	<i>Plectropterus gambensis</i>	
Steppe Buzzard	<i>Buteo vulpinus</i>	
Streaky-headed Seedeater	<i>Crithagra gularis</i>	
Three-banded Plover	<i>Charadrius tricollaris</i>	
Verreaux's Eagle	<i>Aquila verreauxii</i>	VU
White Stork	<i>Ciconia ciconia</i>	
White-breasted Cormorant	<i>Phalacrocorax carbo</i>	
White-necked Raven	<i>Corvus albicollis</i>	
White-rumped Swift	<i>Apus caffer</i>	
White-throated Canary	<i>Crithagra albogularis</i>	
White-throated Swallow	<i>Hirundo albigularis</i>	
Yellow Bishop	<i>Euplectes capensis</i>	
Yellow Canary	<i>Crithagra flaviventris</i>	
Yellow-billed Duck	<i>Anas undulata</i>	
Yellow-billed Kite	<i>Milvus aegyptius</i>	
Zitting Cisticola	<i>Cisticola juncidis</i>	



Denham's Bustard

BIRDS continued



Secretarybird

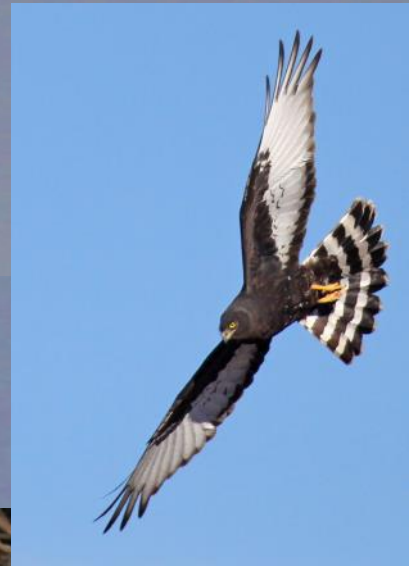
WILDVIEW

02-08-2017 07:47:33



Karoo Korhaan

Black Harriers breed on the Reserve



PLANTS



Species	Status
ACANTHACEAE	
<i>Barleria pungens</i> L.f.	LC
AIZOACEAE (Vygie Family)	
<i>Galenia africana</i> L.	LC
<i>Galenia filiformis</i> (Thunb.) N.E.Br.	LC
<i>Acrodon deminutus</i> Klak	VU
<i>Carpobrotus acinaciformis</i> (L.) L.Bolus	LC
<i>Delosperma</i>	
<i>Drosanthemum asperulum</i> (Salm-Dyke) L.Bolus	
<i>Drosanthemum calycinum</i> (Haw.) Schwantes	NT
<i>Drosanthemum hispidum</i> (L.) Schwantes	LC
<i>Drosanthemum micans</i> (L.) Schwantes	EN
<i>Drosanthemum parvifolium</i> (Haw.) Schwantes	LC
<i>Drosanthemum praecultum</i> (N.E.Br.) Schwantes	LC
<i>Drosanthemum quadratum</i> Klak	EN
<i>Galenia africana</i> L.	LC
<i>Galenia filiformis</i> (Thunb.) N.E.Br.	LC
<i>Gibbaeum haagei</i> Schwantes	EN
<i>Glottiphyllum longum</i> (Haw.) N.E.Br.	LC
<i>Mesembryanthemum longistylum</i> DC.	LC
<i>Psilocaulon parviflorum</i> (Jacq.) Schwantes	LC
<i>Ruschia</i>	
<i>Ruschia rigida</i> (Haw.) Schwantes	LC
AMARANTHACEAE (Cockscomb Family)	
<i>Atriplex semibaccata</i> R.Br. var. <i>appendiculata</i> Aellen	LC
<i>Exomis microphylla</i> (Thunb.) Aellen var. <i>microphylla</i>	LC



Drosanthemum quadratum



Mesembryanthemum longistylum



Drosanthemum calycinum.

PLANTS continued

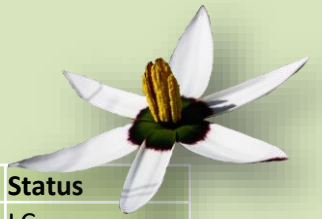


AMARYLLIDACEAE (Amaryllid/Daffodil Family)	
Amaryllis belladonna L.	LC
Boophone disticha (L.f.) Herb.	Declining
Crossyne guttata (L.) D. & U.Müll.-Doblies	LC
Gethyllis spiralis (Thunb.) Thunb.	LC
Gethyllis villosa (Thunb.) Thunb.	LC
Haemanthus coccineus L.	LC
Haemanthus sanguineus Jacq.	LC
Nerine humilis (Jacq.) Herb.	LC
Strumaria spiralis L'Hér.	LC
ANACAMPSEROTACEAE	
Anacampseros lanceolata (Haw.) Sweet subsp. nebrownii (Poelln.) Gerbaulet	LC
ANACARDIACEAE (Mango Family)	
Searsia glauca (Thunb.) Moffett	LC
Searsia longispina (Eckl. & Zeyh.) Moffett	LC
Searsia pallens (Eckl. & Zeyh.) Moffett	LC
Searsia rehmanniana (Engl.) Moffett var. glabrata (Sond.) Moffett	LC
Searsia rosmarinifolia (Vahl) F.A.Barkley	LC
Searsia tomentosa (L.) F.A.Barkley	LC
APIACEAE (Carrot Family)	
Anginon	
Annesorhiza triternata (Eckl. & Zeyh.) Vessio, Tilney & B-E.van Wyk	LC
Arctopus echinatus L.	LC
Hermas	
Lichtensteinia interrupta (Thunb.) Sond.	
Lichtensteinia latifolia Eckl. & Zeyh.	LC
Lichtensteinia trifida Cham. & Schltldl. var. trifida	LC
Notobubon	
Notobubon ferulaceum (Thunb.) Magee	
Notobubon collinum (Ecklon & Zeyher) Magee	NT



Boophone disticha

PLANTS continued



APOCYNACEAE (Milkweed Family)	Status
<i>Carissa bispinosa</i> (L.) Desf. ex Brenan	LC
<i>Ceropegia africana</i> R.Br. subsp. <i>africana</i>	LC
<i>Cynanchum zeyheri</i> Schltr.	LC
<i>Fockea capensis</i> Endl.	LC
<i>Gomphocarpus cancellatus</i> (Burm.f.) Bruyns	LC
<i>Gomphocarpus physocarpus</i> E.Mey.	LC
<i>Microloma sagittatum</i> (L.) R.Br.	LC
<i>Microloma tenuifolium</i> (L.) K.Schum.	LC
<i>Orbea variegata</i> (L.) Haw.	LC
<i>Sarcostemma viminale</i> (L.) R.Br. subsp. <i>viminale</i>	LC
<i>Schizoglossum aschersonianum</i> Schltr. var. <i>aschersonianum</i>	LC
<i>Xysmalobium gomphocarpoides</i> (E.Mey.) D.Dietr. var. <i>gomphocarpoides</i>	LC
APONOGETONACEAE (Cape Pondweed Family)	
<i>Aponogeton distachyos</i> L.f.	LC
ARACEAE (Arum Lily Family)	
<i>Zantedeschia aethiopica</i> (L.) Spreng.	LC
ASPARAGACEAE (Asparagus Family)	
<i>Asparagus aethiopicus</i> L.	LC
<i>Asparagus asparagoides</i> (L.) Druce	LC
<i>Asparagus burchellii</i> Baker	LC
<i>Asparagus capensis</i> L. var. <i>capensis</i>	LC
<i>Asparagus declinatus</i> L.	LC
<i>Asparagus lignosus</i> Burm.f.	LC
<i>Asparagus mariae</i> (Oberm.) Fellingham & N.L.Mey.	LC
<i>Asparagus mucronatus</i> Jessop	LC
<i>Asparagus densiflorus</i> (Kunth) Jessop	LC
<i>Asparagus retrofractus</i> L.	LC
<i>Asparagus rubicundus</i> P.J.Bergius	LC
<i>Asparagus striatus</i> (L.f.) Thunb.	LC
<i>Asparagus suaveolens</i> Burch.	LC
<i>Asparagus volubilis</i> Thunb.	LC



Microloma sagittatum



Microloma tenuifolium

PLANTS continued



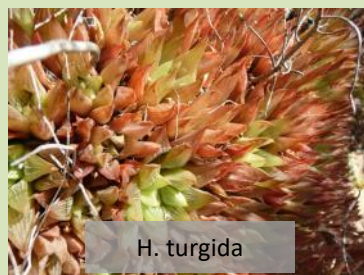
ASPHODELACEAE (Aloe Family)	Status
<i>Aloe arborescens</i> Mill.	LC
<i>Aloe ferox</i> Mill.	LC
<i>Aloe hybrid</i>	LC
<i>Aloe maculata</i> All.	LC
<i>Bulbine abyssinica</i> A.Rich.	LC
<i>Bulbine favosa</i> (Thunb.) Schult. & Schult.f	LC
<i>Bulbine lagopus</i> (Thunb.) N.E.Br.	LC
<i>Bulbine mesembryanthoides</i> Haw. subsp. <i>mesembryanthoides</i>	LC
<i>Bulbinella barkeriae</i> P.L.Perry	LC
<i>Gasteria carinata</i> (Mill.) Duval var. <i>carinata</i>	LC
<i>Haworthia heidelbergensis</i> G.G.Sm. var. <i>minor</i> M.B.Bayer	EN
<i>Haworthia heidelbergensis</i> G.G.Sm. var. <i>scabra</i> M.B.Bayer	LC
<i>Haworthia maraisii</i> Poelln. var. <i>maraisii</i>	LC
<i>Haworthia minima</i> (Aiton) Haw. var. <i>minima</i>	LC
<i>Haworthia mutica</i> Haw. var. <i>mutica</i>	VU
<i>Haworthia turgida</i> Haw. var. <i>longibracteata</i> (G.G.Sm.) M.B.Bayer	LC
<i>Trachyandra</i>	
<i>Trachyandra revoluta</i> (L.) Kunth	LC
ASTERACEAE (Daisy Family)	
<i>Arctotheca calendula</i> (L.) Levyns	LC
<i>Arctotheca prostrata</i> (Salisb.) Britten	LC
<i>Arctotis acaulis</i> L.	LC
<i>Arctotis hirsuta</i> (Harv.) Beauverd	LC
<i>Athanasia dentata</i> (L.) L.	LC
<i>Athanasia filiformis</i> L.f.	LC
<i>Athanasia trifurcata</i> (L.) L.	LC
<i>Athrixia capensis</i> Ker Gawl.	LC
<i>Berkheya</i>	
<i>Berkheya armata</i> (Vahl) Druce	LC
<i>Berkheya rigida</i> (Thunb.) Bolus & Wolley-Dod ex Adamson & T.M.Salter	LC
<i>Chrysocoma ciliata</i> L.	LC
<i>Corymbium africanum</i> L. subsp. <i>scabridum</i> (P.J.Bergius) Weitz var. <i>gramineum</i> (Burm.f.) Weitz	LC



Haworthia marginata



H. mutica

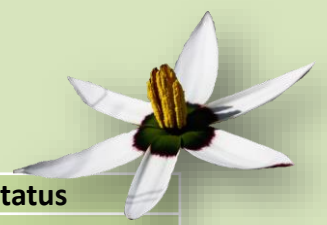


H. turgida



H. minima

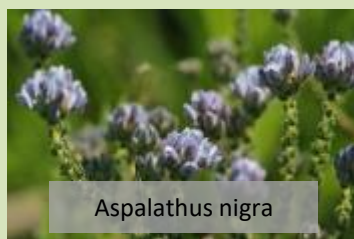
PLANTS continued



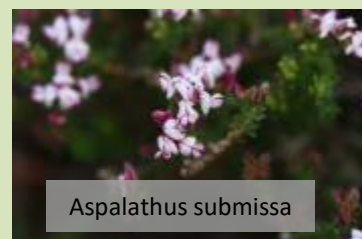
ASTERACEAE (Daisy Family)	Status
Cotula 1	
Cotula 2	
Curio archeri (Compton) P.V.Heath	DDT
Curio citrifolius (G.D.Rowley) P.V.Heath	DDT
Curio crassulifolius (DC.) P.V.Heath	DDT
Curio radicans (L.) P.V.Heath	LC
Cymbopappus adenosolen (Harv.) B.Nord.	LC
Dimorphotheca nudicaulis (L.) DC. var. nudicaulis	LC
Elytropappus rhinocerotis (L.f.) Less.	LC
Eriocephalus africanus L. var. africanus	LC
Felicia	
Felicia muricata (Thunb.) Nees subsp. muricata	LC
Gazania krebsiana Less. subsp. krebsiana	LC
Gerbera serrata (Thunb.) Druce	LC
Helichrysum cymosum (L.) D.Don subsp. cymosum	LC
Helichrysum dasyanthum (Willd.) Sweet	LC
Helichrysum excisum (Thunb.) Less.	LC
Helichrysum pandurifolium Schrank	LC
Helichrysum rosum (P.J.Bergius) Less. var. rosum	LC
Helichrysum teretifolium (L.) D.Don	LC
Lactuca inermis Forssk.	LC
Lasiospermum bipinnatum (Thunb.) Druce	LC
Macledium spinosum (L.) S.Ortíz	LC
Metalasia acuta P.O.Karis	LC
Metalasia densa (Lam.) P.O.Karis	LC
Nidorella ivifolia (L.) J.C.Manning & Goldblatt	LC
Oedera genistifolia (L.) Anderb. & K.Bremer	LC
Oedera squarrosa (L.) Anderb. & K.Bremer	LC
Oedera uniflora (L.f.) Anderb. & K.Bremer	LC
Oncosiphon piluliferum (L.f.) Källersjö	LC
Osteospermum monilifera (L.) Norl. subsp. monilifera	LC
Osteospermum monstrosum (Burm.f.) J.C.Manning & Goldblatt	LC
Osteospermum polygaloides L. var. polygaloides	LC
Osteospermum tomentosum (L.f.) Norl.	LC



Ficinia overbergensis



Aspalathus nigra

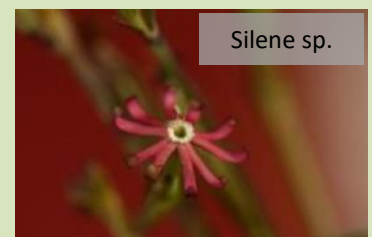
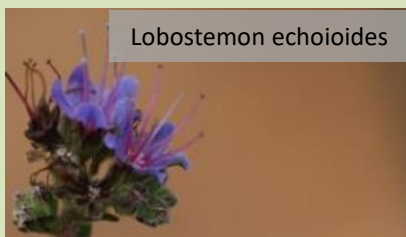


Aspalathus submissa

PLANTS continued



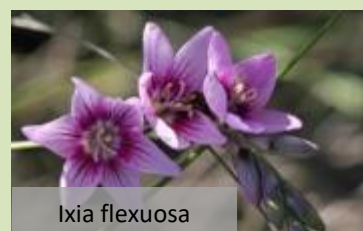
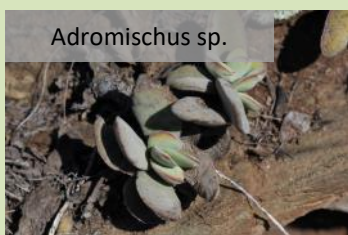
Pentzia incana (Thunb.) Kuntze	LC
Printzia polifolia (L.) Hutch.	LC
Pteronia hirsuta L.f.	LC
Pteronia incana (Burm.) DC.	LC
Pteronia ovalifolia DC.	LC
Relhania garnotii (Less.) K.Bremer	VU
Rhynchosidium sessiliflorum (L.f.) DC.	LC
Senecio bipinnatus (Thunb.) Less.	LC
Senecio burchellii DC.	LC
Senecio erubescens Aiton var. erubescens	LC
Senecio pinifolius (L.) Lam.	LC
Stoebe capitata P.J.Bergius	LC
Stoebe cf. muirii Levyns	VU
Stoebe rugulosa Harv.	EN
Syncarpha chlorochrysum (DC.) B.Nord.	NT
Ursinia	
Ursinia anthemoides (L.) Poir. subsp. anthemoides	LC
Ursinia nana DC. subsp. nana	LC
BORAGINACEAE (Forget –me-not Family)	Status
Lobostemon echioides Lehm.	LC
Lobostemon capitatus (L.) H.Buek	VU
Lobostemon echioides Lehm.	LC
BRASSICACEAE (Mustard/Cabbage Family)	
Heliophila cornuta Sond. var. squamata (Schltr.) Marais	LC
Heliophila pendula Willd.	LC
Sisymbrium capense Thunb.	LC
BUDDLEJACEAE (Sagewood Family)	
Buddleja saligna Willd.	LC
CAMPANULACEAE (Bellflower Family)	
Cyphia digitata (Thunb.) Willd. subsp. digitata	LC
Cyphia volubilis (Burm.f.) Willd. var. volubilis	LC
Lobelia	
Lobelia erinus L.	LC
Lobelia tomentosa L.f.	LC
Wahlenbergia tenella (L.f.) Lammers var. tenella	LC



PLANTS continued



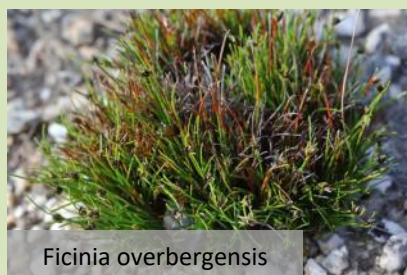
Caprifoliaceae	
Scabiosa incisa Mill.	LC
CARYOPHYLLACEAE	
Dianthus crenatus Thunb.	LC
Dianthus thunbergii S.S.Hooper	LC
Silene bellidioides Sond.	LC
Silene undulata Aiton	LC
CELASTRACEAE	
Cassine peragua L. subsp. peragua	LC
Gymnosporia buxifolia (L.) Szyszyl.	LC
Maytenus oleoides (Lam.) Loes.	LC
Pterocelastrus tricuspidatus (Lam.) Walp	LC
COLCHICACEAE	
Colchicum eucomoides (Jacq.) J.C.Manning & Vinn.	LC
Colchicum	
Wurmbea glassii (C.H.Wright) J.C.Manning & Vinn.	LC
Wurmbea punctata (L.) J.C.Manning & Vinn.	LC
CHENOPODIACEAE (Saltbush Family)	Status
Atriplex semibaccata R.Br. var. appendiculata Aellen	LC
Chenopodium album L.	NE
Exomis microphylla (Thunb.) Aellen var. microphylla	LC
COMMELINACEAE (Spiderwort Family)	
Commelina africana L. var. africana	LC
CONVOLVULACEAE (Sweet Potato Family)	
Falkia repens Thunb.	LC



PLANTS continued



CRASSULACEAE (Plakkie Family)	
<i>Adromischus caryophyllaceus</i> (Burm.f.) Lem.	LC
<i>Adromischus filicaulis</i> (Eckl. & Zeyh.) C.A.Sm. subsp. <i>marlothii</i> (Schönland) Toelken	LC
<i>Adromischus triflorus</i> (L.f.) A.Berger	LC
<i>Cotyledon orbiculata</i> L. var. <i>orbiculata</i>	LC
<i>Crassula atropurpurea</i> (Haw.) D.Dietr. var. <i>atropurpurea</i>	LC
<i>Crassula capensis</i> (L.) Baill. var. <i>capensis</i>	LC
<i>Crassula cotyledonis</i> Thunb.	LC
<i>Crassula expansa</i> Dryand. subsp. <i>expansa</i>	LC
<i>Crassula muscosa</i> L. var. <i>muscosa</i>	LC
<i>Crassula nudicaulis</i> L. var. <i>nudicaulis</i>	LC
<i>Crassula nudicaulis</i> L. var. <i>platyphylla</i> (Harv.) Toelken	LC
<i>Crassula perforata</i> Thunb. subsp. <i>perforata</i>	LC
<i>Crassula pubescens</i> Thunb. subsp. <i>pubescens</i>	LC
<i>Crassula sebaeoides</i> (Eckl. & Zeyh.) Toelken	LC
<i>Crassula subulata</i> L. var. <i>subulata</i>	LC
<i>Crassula tetragona</i> L. subsp. <i>tetragona</i>	LC
CUCURBITACEAE (Pumpkin Family)	
<i>Cucumis zeyheri</i> Sond.	LC
<i>Kedrostis capensis</i> (Sond.) A.Meeuse	LC
CYPERACEAE (Sedge Family)	
<i>Cyperus textilis</i> Thunb.	LC
<i>Ficinia</i>	
<i>Ficinia indica</i> (Lam.) H.Pfeiff.	LC
<i>Ficinia nigrescens</i> (Schrad.) J.Raynal	LC
<i>Ficinia overbergensis</i> Muasya & C.H.Stirt.	NT
<i>Isolepis marginata</i> (Thunb.) A.Dietr.	LC



Ficinia overbergensis

PLANTS continued



CYTINACEAE	
<i>Cytinus sanguineus</i> (Thunb.) Fourc.	LC
DROSERACEAE (Sundew Family)	
<i>Drosera cistiflora</i> L.	LC
EBENACEAE (Ebony Family)	
<i>Diospyros austro-africana</i> De Winter	LC
<i>Diospyros dichrophylla</i> (Gand.) De Winter	LC
<i>Euclea crispa</i> (Thunb.) Gürke subsp. <i>crispa</i>	LC
<i>Euclea undulata</i> Thunb.	LC
ERICACEAE (Erica Family)	
<i>Erica cerinthoides</i> L. var. <i>cerinthoides</i>	LC
<i>Erica coccinea</i> L. subsp. <i>coccinea</i>	LC
<i>Erica copiosa</i> J.C.Wendl. var. <i>copiosa</i>	LC
<i>Erica karooica</i> E.G.H.Oliv.	LC
<i>Erica plukenetii</i> L. subsp. <i>plukenetii</i>	LC
<i>Erica venustiflora</i> E.G.H.Oliv. subsp. <i>glandulosa</i> E.G.H.Oliv.	VU
ERIOSPERMACEAE (Cottonseed Family)	
<i>Eriospermum</i> sp.	
<i>Eriospermum capense</i> (L.) Thunb. subsp. <i>capense</i>	LC
<i>Eriospermum lanceifolium</i> Jacq.	LC
<i>Eriospermum paradoxum</i> (Jacq.) Ker Gawl.	LC
EUPHORBIACEAE (Spurge Family)	
<i>Clutia laxa</i> Eckl. Ex Sond.	LC
<i>Clutia</i> cf <i>tomentosa</i> L.	LC
<i>Clutia govaertsii</i> Radcl.-Sm.	LC
<i>Euphorbia burmannii</i> E.Mey. ex Boiss.	LC
<i>Euphorbia clandestina</i> Jacq.	LC
<i>Euphorbia erythrina</i> Link var. <i>erythrina</i>	LC
<i>Euphorbia mauritanica</i> L.	LC
<i>Euphorbia nesemannii</i> R.A.Dyer	NT
<i>Euphorbia rhombifolia</i> Boiss.	LC
<i>Euphorbia silenifolia</i> (Haw.) Sweet	LC
<i>Euphorbia tuberosa</i> L.	LC

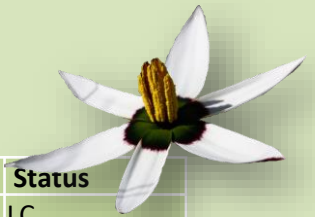


Eriospermum paradoxum



Clutia sp. nov. (?)

PLANTS continued



FABACEAE (Pea Family)	Status
<i>Amphithalea violacea</i> (E.Mey.) Benth.	LC
<i>Argyrobium molle</i> Eckl. & Zeyh.	LC
<i>Argyrobium pachyphyllum</i> Schltr.	EN
<i>Aspalathus acuminata</i> Lam. subsp. <i>acuminata</i>	LC
<i>Aspalathus alpestris</i> (Benth.) R.Dahlgren	LC
<i>Aspalathus asparagoides</i> L.f. subsp. <i>asparagoides</i>	LC
<i>Aspalathus barbiger</i> R.Dahlgren	VU
<i>Aspalathus candidula</i> R.Dahlgren	VU
<i>Aspalathus grobleri</i> R.Dahlgren	EN
<i>Aspalathus hispida</i> Thunb. subsp. <i>albiflora</i> (Eckl. & Zeyh.) R.Dahlgren	LC
<i>Aspalathus incurvifolia</i> Vogel ex Walp.	LC
<i>Aspalathus microphylla</i> DC.	LC
<i>Aspalathus millefolia</i> R.Dahlgren	VU
<i>Aspalathus mundiana</i> Eckl. & Zeyh.	LC
<i>Aspalathus nigra</i> L.	LC
<i>Aspalathus pinguis</i> Thunb. subsp. <i>pinguis</i>	LC
<i>Aspalathus quartzicola</i> C.H.Stirt. & Muasya	VU
<i>Aspalathus sanguinea</i> Thunb. subsp. <i>sanguinea</i>	VU
<i>Aspalathus smithii</i> R.Dahlgren	EN
<i>Aspalathus spinosa</i> L. subsp. <i>spinosa</i>	LC
<i>Aspalathus submissa</i> R.Dahlgren	LC
Indigofera	
<i>Indigofera heterophylla</i> Thunb.	LC
<i>Indigofera nigromontana</i> Eckl. & Zeyh.	LC
<i>Lessertia annularis</i>	
<i>Lessertia frutescens</i> (L.) Goldblatt & J.C.Manning subsp. <i>microphylla</i>	LC
<i>Lessertia spinescens</i> E.Mey.	LC
<i>Lessertia stenoloba</i> E.Mey.	LC
<i>Lotononis cf pungens</i> Eckl. & Zeyh.	LC
<i>Lotononis umbellata</i> (L.) Benth.	LC
Melolobium	



Aspalathus nigra

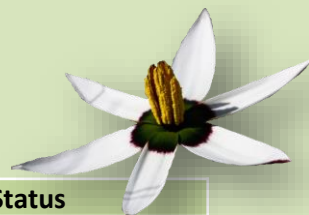


A. spinosa



A. quartzicola

PLANTS continued



FABACEAE (Pea Family)	Status
<i>Otholobium candicans</i> (Eckl. & Zeyh.) C.H.Stirt.	LC
<i>Otholobium curtisiae</i> C.H.Stirt. & Muasya	
<i>Otholobium pungens</i> C.H.Stirt.	EN
<i>Polhillia curtisiae</i> C.H.Stirt. & Muasya	CR
<i>Polhillia pallens</i> C.H.Stirt.	VU
<i>Tephrosia capensis</i> (Jacq.) Pers. var. <i>capensis</i>	LC
<i>Trifolium burchellianum</i> Ser. subsp. <i>burchellianum</i>	LC
<i>Vachellia karroo</i> (Hayne) Banfi & Gallaso	LC
<i>Xiphotheca guthriei</i> (L.Bolus) A.L.Schutte & B.-E.van Wyk	EN
<i>Indigofera nigromontana</i> Eckl. & Zeyh.	LC
GENTIANACEAE (Gentian Family)	
<i>Chironia baccifera</i> L.	LC
<i>Chironia tetragona</i> L.f.	LC
<i>Sebaea albens</i> (L.f.) Roem. & Schult.	LC
<i>Sebaea aurea</i> (L.f.) Roem. & Schult.	LC
<i>Sebaea exacoides</i> (L.) Schinz	LC
GERANIACEAE (Geranium Family)	
<i>Pelargonium alchemilloides</i> (L.) L'Hér.	LC
<i>Pelargonium candicans</i> Spreng.	LC
<i>Pelargonium carneum</i> Jacq.	LC
<i>Pelargonium caucalifolium</i> Jacq. subsp. <i>caucalifolium</i>	LC
<i>Pelargonium dipetalum</i> subsp. <i>stenosiphon</i>	LC
<i>Pelargonium lobatum</i> (Burm.f.) L'Hér.	LC
<i>Pelargonium longifolium</i> (Burm.f.) Jacq.	LC
<i>Pelargonium myrrhifolium</i> (L.) L'Hér. var. <i>myrrhifolium</i>	LC
<i>Pelargonium odoratissimum</i> (L.) L'Hér.	LC
<i>Pelargonium pinnatum</i> (L.) L'Hér.	LC
<i>Pelargonium proliferum</i> (Burm.f.) Steud.	LC
<i>Pelargonium triste</i> (L.) L'Hér.	LC



Pelargonium carneum

PLANTS continued



HAEMODORACEAE (Bloodroot Family)	Status
<i>Dilatris pillansii</i> W.F.Barker	LC
<i>Wachendorfia paniculata</i> Burm.	LC
HYACINTHACEAE (Hyacinth Family)	
<i>Albuca canadensis</i> (L.) F.M.Leight.	LC
<i>Albuca cooperi</i> Baker	LC
<i>Albuca suaveolens</i> (Jacq.) J.C.Manning & Goldblatt	LC
<i>Drimia altissima</i> (L.f.) Ker Gawl.	Declining
<i>Drimia capensis</i> (Burm.f.) Wijnands	LC
<i>Drimia elata</i> Jacq.	DDT
<i>Eucomis regia</i> (L.) L'Hér.	LC
<i>Lachenalia unifolia</i> Jacq. var. <i>unifolia</i>	LC
<i>Lachenalia orchioides</i> (L.) Aiton var. <i>orchioides</i>	LC
<i>Lachenalia</i> sp. <i>nova</i>	CR
<i>Ledebouria revoluta</i> (L.f.) Jessop	LC
<i>Massonia depressa</i> Houtt.	LC
<i>Ornithogalum dubium</i> Houtt.	LC
<i>Ornithogalum juncifolium</i> Jacq. var. <i>juncifolium</i>	LC
IRIDACEAE (Iris Family)	
<i>Aristea pusilla</i> (Thunb.) Ker Gawl.	LC
<i>Babiana patersoniae</i> L.Bolus	LC
<i>Babiana patula</i> N.E.Br.	Declining
<i>Bobartia longicyma</i> J.B.Gillett subsp. <i>microflora</i> Strid	VU
<i>Chasmanthe aethiopica</i> (L.) N.E.Br.	LC
<i>Chasmanthe bicolor</i> (Gasp.) N.E.Br.	VU
<i>Ferraria crispa</i> Burm. subsp. <i>crispa</i>	LC
<i>Freesia caryophyllacea</i> (Burm.f.) N.E.Br.	NT
<i>Freesia refracta</i> (Jacq.) Klatt	LC
<i>Geissorhiza</i> cv <i>inconspicua</i> Baker	LC

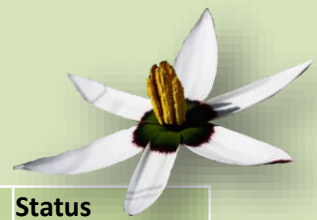


Freesia refracta



Bobartia longicyma

PLANTS continued



IRIDACEAE (Iris Family)	Status
<i>Geissorhiza parva</i> Baker	LC
<i>Gladiolus</i>	
<i>Gladiolus carinatus</i> Aiton	LC
<i>Gladiolus floribundus</i> Jacq.	LC
<i>Gladiolus gracilis</i> Jacq.	LC
<i>Gladiolus maculatus</i> Sweet	LC
<i>Gladiolus patersoniae</i> F.Bolus	LC
<i>Gladiolus permeabilis</i> D.Delaroche subsp. <i>permeabilis</i>	LC
<i>Gladiolus teretifolius</i> Goldblatt & M.P.de Vos	NT
<i>Gladiolus tristis</i> L.	LC
<i>Gladiolus vaginatus</i> F.Bolus	VU
<i>Gladiolus vandermerwei</i> (L.Bolus) Goldblatt & M.P.de Vos	EN
<i>Hesperantha</i>	
<i>Hesperantha</i>	
<i>Ixia</i>	
<i>Ixia micrandra</i> Baker var. <i>micrandra</i>	LC
<i>Lapeirousia pyramidalis</i> (Lam.) Goldblatt subsp. <i>pyramidalis</i>	LC
<i>Micranthus alopecuroides</i> (L.) Rothm.	LC
<i>Micranthus tubulosus</i> (Burm.f.) N.E.Br.	LC
<i>Moraea ciliata</i> (L.f.) Ker Gawl.	LC
<i>Moraea debilis</i> Goldblatt	EN
<i>Moraea elsiae</i> Goldblatt	VU
<i>Moraea fergusoniae</i> L.Bolus	LC
<i>Moraea gawleri</i> Spreng.	LC
<i>Moraea inconspicua</i> Goldblatt	LC
<i>Moraea lewisiae</i> (Goldblatt) Goldblatt subsp. <i>lewisiae</i>	LC
<i>Moraea tricuspidata</i> (L.f.) G.J.Lewis	LC
<i>Moraea tripetala</i> (L.f.) Ker Gawl. subsp. <i>tripetala</i>	LC
<i>Romulea</i>	
<i>Romulea flava</i> (Lam.) M.P.de Vos var. <i>flava</i>	LC
<i>Romulea rosea</i> (L.) Eckl. var. <i>rosea</i>	LC
<i>Syringodea longituba</i> (Klatt) Kuntze var. <i>longituba</i>	LC
<i>Tritonia flabellifolia</i> (D.Delaroche) G.J.Lewis var. <i>flabellifolia</i>	LC
<i>Tritoniopsis antholyza</i> (Poir.) Goldblatt	LC
<i>Tritoniopsis revoluta</i> (Burm.f.) Goldblatt	LC
<i>Watsonia aletroides</i> (Burm.f.) Ker Gawl.	NT
<i>Watsonia laccata</i> (Jacq.) Ker Gawl.	LC



Hermannia hyssopifolia



Hermannia trifoliata



Hermannia flamula



PLANTS continued

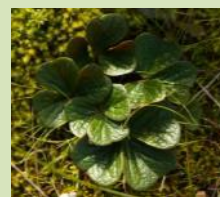
JUNCACEAE	
<i>Juncus acutus</i> L. subsp. <i>leopoldii</i> (Parl.) Snogerup	LC
LAMIACEAE (Mint Family)	
<i>Ballota africana</i> (L.) Benth.	LC
<i>Leonotis ocymifolia</i> (Burm.f.) Iwarsson	LC
<i>Salvia africana-lutea</i> L.	LC
<i>Salvia namaensis</i> Schinz	LC
<i>Stachys aethiopica</i> L.	LC
<i>Ballota africana</i> (L.) Benth.	LC
LINACEAE (Flax Family)	
<i>Linum thunbergii</i> Eckl. & Zeyh.	LC
MALVACEAE (Hibiscus Family)	
<i>Abutilon sonneratianum</i> (Cav.) Sweet	LC
<i>Anisodonteia fruticosa</i> (P.J.Bergius) Bates	LC
<i>Anisodonteia scabrosa</i> (L.) Bates	LC
<i>Grewia occidentalis</i> L. var. <i>occidentalis</i>	LC
<i>Hermannia</i>	
<i>Hermannia</i>	
<i>Hermannia filifolia</i> L.f. var. <i>grandicalyx</i>	LC
<i>Hermannia flammea</i> Jacq.	LC
<i>Hermannia flammula</i> Harv.	LC
<i>Hermannia holosericea</i> Jacq.	LC
<i>Hermannia hyssopifolia</i> L.	LC
<i>Hermannia odorata</i> Aiton	LC
<i>Hermannia saccifera</i> (Turcz.) K.Schum.	LC
<i>Hermannia ternifolia</i> C.Presl ex Harv.	LC
<i>Hermannia trifoliata</i> L.	LC
<i>Hibiscus aethiopicus</i> L. var. <i>aethiopicus</i>	LC
<i>Hibiscus pusillus</i> Thunb.	LC
<i>Sida cordifolia</i> L. subsp. <i>cordifolia</i>	LC
MELIANTHACEAE (Kruitjie-roer-my-nie Family)	
<i>Melianthus major</i> L.	LC
MENISPERMACEAE (Moonseed Family)	
<i>Cissampelos capensis</i> L.f.	LC
MONTINIACEA (Wild Clove Family)	
<i>Montinia caryophyllacea</i> Thunb.	LC



PLANTS continued

OLEACEAE (Olive Family)	
<i>Olea europaea</i> L. subsp. <i>africana</i> (Mill.) P.S.Green	LC
ORCHIDACEAE (Orchid Family)	
<i>Bartholina burmanniana</i> (L.) Ker Gawl.	LC
<i>Disperis bolusiana</i> Schltr. ex Bolus subsp. <i>bolusiana</i>	LC
<i>Holothrix</i>	
<i>Holothrix burchellii</i> (Lindl.) Rchb.f.	LC
<i>Holothrix cernua</i> (Burm.f.) Schelpe	LC
<i>Holothrix mundii</i> Sond.	LC
<i>Pterygodium alatum</i> (Thunb.) Sw.	LC
<i>Pterygodium catholicum</i> (L.) Sw.	LC
<i>Pterygodium volucris</i> (L.f.) Sw.	LC
<i>Satyrium erectum</i> Sw.	LC
OROBANCHACEAE (Broomrape Family)	
<i>Hyobanche sanguinea</i> L.	LC
OXALIDACEAE (Sorrel Family)	
<i>Oxalis bifida</i> Thunb.	LC
<i>Oxalis ciliaris</i> Jacq. var. <i>ciliaris</i>	LC
<i>Oxalis confertifolia</i> (Kuntze) R.Knuth var. <i>confertifolia</i>	DDT
<i>Oxalis depressa</i> Eckl. & Zeyh.	LC
<i>Oxalis eckloniana</i> C.Presl var. <i>sonderi</i> T.M.Salter	LC
<i>Oxalis engleriana</i> Schltr.	LC
<i>Oxalis fergusonae</i> T.M.Salter	LC
<i>Oxalis heterophylla</i> DC.	LC
<i>Oxalis obtusa</i> Jacq.	LC
<i>Oxalis orthopoda</i> T.M.Salter	LC
<i>Oxalis pes-caprae</i> L. var. <i>pes-caprae</i>	LC
<i>Oxalis polyphylla</i> Jacq. var. <i>polyphylla</i>	LC
<i>Oxalis punctata</i> L.f.	LC
<i>Oxalis purpurea</i> L.	LC

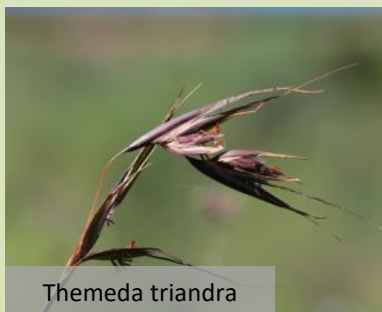
Oxalis spp.



PLANTS continued



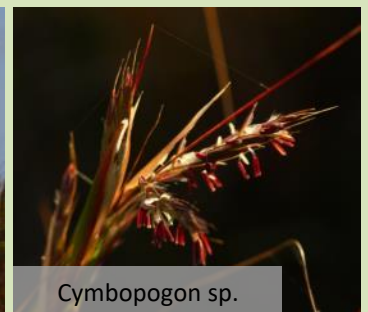
OXALIDACEAE (Sorrel Family)	Status
<i>Oxalis robinsonii</i> T.M.Salter & Exell	DDT
<i>Oxalis stellata</i> Eckl. & Zeyh. var. <i>glandulosa</i> T.M.Salter	LC
<i>Oxalis truncatula</i> Jacq.	LC
<i>Oxalis zeekoevleyensis</i> R.Knuth	LC
PLUMBAGINACEAE (Sea Lavender Family)	
<i>Limonium scabrum</i> (Thunb.) Kuntze var. <i>scabrum</i>	LC
POACEAE (Grass Family)	
<i>Aristida diffusa</i> Trin. subsp. <i>diffusa</i>	LC
<i>Capeochloa arundinacea</i> (P.J.Bergius) N.P.Barker & H.P.Linder	LC
<i>Cymbopogon marginatus</i> (Steud.) Stapf ex Burtt Davy	LC
<i>Cynodon dactylon</i> (L.) Pers.	LC
<i>Digitaria eriantha</i> Steud.	LC
<i>Ehrharta calycina</i> Sm. var. <i>calycina</i>	LC
<i>Eragrostis curvula</i> (Schrad.) Nees	LC
<i>Hyparrhenia hirta</i> (L.) Stapf	LC
<i>Melinis repens</i> (Willd.) Zizka subsp. <i>repens</i>	LC
<i>Pentameris eriostoma</i> (Nees) Steud.	LC
<i>Tenaxia stricta</i> (Schrad.) N.P.Barker & H.P.Linder	LC
<i>Themeda triandra</i> Forssk.	LC
POLYGALACEAE	Status
<i>Muraltia</i>	
<i>Muraltia dispersa</i> Levyns	LC
<i>Muraltia heisteria</i> (L.) DC.	LC
<i>Polygala garcinii</i> DC.	LC
<i>Polygala umbellata</i> L.	LC
POLYGONACEAE	
<i>Polygonum undulatum</i> (L.) P.J.Bergius	



Themeda triandra



Ehrharta sp.



Cymbopogon sp.

PLANTS continued



PRIMULACEAE	
Myrsine africana L.	LC
Samolus porosus (L.f.) Thunb.	LC
PROTEACEAE (Protea Family)	
Leucadendron coriaceum E.Phillips & Hutch.	EN
Leucadendron meridianum I.Williams	LC
Leucadendron teretifolium (Andrews) I.Williams	NT
Protea decurrens E.Phillips	EN
Protea obtusifolia H.Buek ex Meisn.	NT
RANUNCULACEAE (Buttercup Family)	
Anemone anemonoides (H.Rasm.) J.C.Manning & Goldblatt subsp. anemonoides	LC
Anemone vesicatoria (L.f.) Prantl subsp. vesicatoria	LC
RESTIONACEAE (Dekriet Family)	
Elegia recta (Mast.) Moline & H.P.Linder	NT
Elegia squamosa Mast.	EN
Restio capensis (L.) H.P.Linder & C.R.Hardy	LC
Thamnochortus	
RHAMNACEAE (Blinkblaar Family)	
Phylica sp.1	
Phylica sp.2	
ROSACEAE (Rose Family)	
Cliffortia ruscifolia L. var. ruscifolia	Status LC



PLANTS continued



RUBIACEAE (Gardenia Family)	
Anthospermum aethiopicum L.	LC
Anthospermum galioides Rchb.f. subsp. galioides	LC
Anthospermum spathulatum Spreng. subsp. spathulatum	LC
RUTACEAE (Citrus Family)	
Acmadenia macropetala (P.E.Glover) Compton	VU
Agathosma	
Agathosma capensis (L.) Dummer	LC
Agathosma foetidissima (Bartl. & H.L.Wendl.) Steud.	NT
Diosma cf passerinoides Steud.	VU
SANTALACEAE (Sandalwood Family)	
Thesidium fragile (Thunb.) Sond.	LC
Thesium	
Thesium strictum P.J.Bergius	LC
Viscum capense L.f.	LC
Viscum hoolei L.f.	LC
SAPINDACEAE (Soapberry Family)	
Dodoniaea viscosa Jacq. var. angustifolia (L.f.) Benth.	LC
SAPOTACEAE (White Milkwood Family)	
Sideroxylon inerme L. subsp. inerme	LC
SCHIZAEACEAE	
Schizaea pectinata (L.) Sw.	LC



Freylinia undulata



Agathosma foetidissima

PLANTS continued



SCROPHULARIACEAE (Snapdragon Family)	
Chaenostoma	
Chaenostoma aethiopicum (L.) Benth.	LC
Chaenostoma caeruleum (L.f.) Kornhall	LC
Diascia	
Diascia cv decipiens K.E.Steiner	LC
Diascia parviflora Benth.	LC
Dischisma ciliatum (P.J.Bergius) Choisy subsp. ciliatum	LC
Freylinia undulata (L.f.) Benth.	LC
Hemimeris racemosa (Houtt.) Merr.	LC
Jamesbrittenia atropurpurea (Benth.) Hilliard subsp. atropurpurea	LC
Nemesia barbata (Thunb.) Benth.	LC
Selago corymbosa L.	LC
Selago dolosa Hilliard	LC
Zaluzianskya	
Zaluzianskya cf minima (Hiern) Hilliard	
Zaluzianskya divaricata (Thunb.) Walp.	LC
SOLANACEAE (Tomato Family)	
Lycium	
Lycium cinereum Thunb.	LC
Solanum	LC
Solanum linnaeanum Hepper & Jaeger	LC
Solanum tomentosum L. var. tomentosum	LC
Withania somnifera (L.) Dunal	LC



PLANTS continued



TECOPHILAEACEAE (Raaptol Family)	
Cyanella hyacinthoides L.	LC
Cyanella lutea L.f.	LC
THYMELAEACEAE (Fibre Bark Family)	
Gnidia sp.1	
Gnidia sp.2	
Gnidia laxa (L.f.) Gilg	LC
Passerina ericoides L.	VU
Struthiola cf eckloniana Meisn.	LC
ZYGOPHYLLACEAE (Spekbos Family)	
Tribulus terrestris L.	LC
Zygophyllum sp.	
Zygophyllum flexuosum Eckl. & Zeyh.	LC



Zygophyllum sp.



Cyanella lutea

MAMMALS



Species	Common name
Order MACROSCELIDEA	
<i>Elephantulus edwardii</i> (A. Smith, 1839)	Caperock elephant-shrew
Order INSECTIVORA	
<i>Myosorex varius</i> (Smuts, 1832)	Forest Shrew
<i>Suncus varilla subsp. varilla</i> (Thomas, 1895)	Lesser Dwarf Shrew
Order CHIROPTERA	
<i>Rhinolophus clivosus</i> (Cretzschmar, 1828)	Geoffroy's Horeseshoe Bat
<i>Neoromicia capensis</i> (A. Smith, 1829)	Cape Sertine Bat
<i>Miniopterus natalensis</i> (A. Smith, 1936)	Natal Long-fingered Bat
<i>Nycteris thebaica</i> (E. Geoffroy Saint-Hilaire, 1818)	Egyptian Slit-faced Bat
Order LAGOMORPHA	
<i>Lepus saxatilis subsp. saxatilis</i> (F. Cuvier, 1823)	Scrub Hare
Order RODENTIA	
<i>Cryptomys hottentotus</i> (Lesson, 1826)	Common Molerat
<i>Hystrix africaeaustralis subsp. africaeaustralis</i> (Peters, 1852)	Cape Porcupine
<i>Rhodomys pumilio</i> (Sparman, 1784)	Striped Mouse
<i>Otomys irroratus</i> (Brants, 1827)	Vlei Rat
<i>Myotomys unisulcatus</i> (F. Cuvier, 1829)	Karoo Bush Rat
<i>Gerbilliscus afra</i> (Gray, 1830)	Cape Gerbil
<i>Rattus rattus</i> (Linnaeus, 1758)	House Rat
<i>Mus minutoides</i> (A. Smith, 1834)	Pygmy Mouse
<i>Aethomys namaquensis</i> (A. Smith, 1834)	Namaqua rock mouse

Yellow Mongoose



Vaal Rhebok

MAMMALS continued



Species	Common name
Order CARNIVORA	
<i>Otocyon megalotis</i> (Desmarest, 1822)	Bat eared fox
<i>Galerella pulverulenta subsp. pulverulenta</i> (Wagner, 1839)	Cape Grey Mongoose
<i>Cynictis penicillata subsp. penicillata</i> (G. Cuvier, 1829)	Yellow Mongoose
<i>Herpestes ichneumon subsp. cafer</i> (Linnaeus, 1758)	Large Grey Mongoose
<i>Atilax paludinosus subsp. paludinosus</i> (G. Cuvier, 1777)	Water Mongoose
<i>Genetta tigrina subsp. tigrina</i> (Schreber, 1778)	Large-spotted Genet
<i>Genetta genetta subsp. pulchra</i> (Linnaeus, 1758)	Small-spotted Genet
<i>Proteles cristata</i> (Sparrman, 1783)	Aardwolf
<i>Felis catus</i> (Linnaeus, 1758)	Cat
<i>Felis silvestris subsp. cafra</i> (Schreber, 1777)	African Wild Cat
<i>Ictonyx striatus subsp. striatus</i> (Perry, 1810)	Striped Polecat
<i>Mellivora capensis subsp. capensis</i> (Schreber, 1776)	Honey Badger
<i>Caracal caracal subsp. caracal</i> (Schreber, 1776)	Caracal
Order TUBULIDENTATA	
<i>Orycteropus afer subsp. afer</i> (Pallas, 1766)	Aardvark
Order HYRACOIDEA	
<i>Procavia capensis subsp. capensis</i> (Pallas, 1766)	Rock Dassie
Order ARTIODACTYLA	
<i>Potamochoerus larvatus subsp. koiropotamus</i> (F. Cuvier, 1822)	Bosvark



MAMMALS continued



Species	Common name
Order ARTIODACTYLA	
<i>Raphicerus campestris</i> (Thunberg, 1811)	Steenbok
<i>Raphicerus melanotis</i> (Thunberg, 1811)	Cape Grysbok
<i>Sylvicapra grimmia subsp. grimmia</i> (Linnaeus, 1758)	Common Duiker
<i>Pelea capreolus</i> (Forster, 1790)	Grey Rhebok
<i>Dama dama</i> (Linnaeus, 1758)	Fallow Deer
<i>Antidorcas marsupialis subsp. marsupialis</i> (Zimmermann, 1780)	Springbok
<i>Tragelaphus strepsiceros subsp. strepsiceros</i> (Pallas, 1766)	Kudu



Common Duiker

Small mammals recorded through live-trapping on Haarwegskloof



Cape Rock Elephant Shrew



Pygmy Mouse



Namaqua Rock Mouse



Four-Striped Mouse

Camera trap photos from Haarwegskloof





Camera trap photos from Haarwegskloof



Denham's Bustard

WILDVIEW

11-25-2014 18:13:49



WILDVIEW

11-25-2014 18:13:44



Scrub Hare

WILDVIEW

10-05-2014 07:00:22



Duiker

WILDVIEW

10-05-2014 16:29:16



Vaal / Grey Rhebok

WILDVIEW

10-06-2014 11:22:47



Cape Spurfowl

WILDVIEW

10-23-2014 18:17:16



REPTILES



Species	Common name
Snakes	
<i>Bitis arietans subsp. arietans</i> (Merrem, 1820)	Puff Adder
<i>Boaedon capensis</i> (Duméril & Bibron, 1854)	Brown House Snake
<i>Dasypeltis scabra subsp. scabra</i> (Linnaeus, 1758)	Rhombic egg-eater
<i>Duberria lutrix subsp. lutrix</i> (Linnaeus, 1758)	Common Slug-eater
<i>Homoroselaps lacteus</i> (Linnaeus, 1758)	Spotted Harlequin Snake
<i>Naja nivea</i> (Linnaeus, 1758)	Cape Cobra
<i>Psammophis crucifer</i> (Daudin, 1803)	Cross-marked Grass-snake
<i>Psammophylax rhombeatus subsp. rhombeatus</i> (Linnaeus, 1758)	Spotted Skaapsteker
Tortoises	
<i>Chersina angulata</i> (Schweigger, 1812)	Angulate tortoise
<i>Homopus areolatus</i> (Thunberg, 1787)	Common Padloper
Lizards	
<i>Acontias meleagris</i> (Linnaeus, 1758)	Cape Legless Skink
<i>Agama atra</i> (Peters, 1855)	Southern Rock Agama
<i>Bradypodion gutturale</i> (Smith, 1949)	Little Karoo Dwarf Chameleon
<i>Chamaesaura anguina subsp. anguina</i> (Linnaeus, 1758)	Cape Grass Lizard
<i>Cordylus cordylus</i> (Linnaeus, 1758)	Cape Girdled Lizard
<i>Gerrhosaurus typicus</i> (A. Smith, 1837)	Namaqua Plated Lizard
<i>Pachydactylus geitje</i> (Sparman, 1778)	Ocellated Thick-toed gecko
<i>Tetradactylus tetradactylus</i> (Daudin, 1802)	Common Long-tailed Seps
<i>Trachylepis capensis</i> (Gray, 1831)	Three-striped Skink



Puffadder.



Grass Snake



Rock Agama



Robertson Dwarf Chameleon



Angulate Tortoise

REPTILES



Ocellated Thick-toed gecko



Three-striped Skink



Common Long-tailed Seps



Cape Legless Skink.



Rhombic egg-eater



Spotted Skaapsteker



Brown House Snake



Common Slug-eater

AMPHIBIANS



Species	Common name
<i>Xenopus laevis</i> (Daudin, 1802)	Common Platanna
<i>Amietophrynus rangeri</i> (Hewitt, 1935)	Raucous Toad
<i>Amietia fuscigula</i> (Duméril & Bibron, 1841)	Cape River Frog
<i>Cacosternum boettgeri</i> (Boulenger, 1882)	Common Caco
<i>Breviceps rosei subsp. rosei</i> (Power, 1926)	Sand Rain Frog
<i>Strongylopus grayii</i> (Smith, 1849)	Clicking Stream Frog
<i>Tomopterna delalandii</i> (Tschudi, 1838)	Cape Sand Frog



Cape River Frog



Sand Rain Frog



Raucus Toad



Common Caco



Clicking Stream Frog

SPIDERS & SCORPIANS



FAMILY	SPECIES	COMMON NAME
Spiders		
AGELENIDAE	Agelena gaerdesi	Funnel-web Spider
ARANEIDAE	Argiope australis	Common Garden Orb-web Spider
ARANEIDAE	Argiope trifasciata	Banded Garden Orb-web Spider
ARANEIDAE	Caerostris sexcuspidata	Horned Bark Spider
ARANEIDAE	Cyclosa insulana	Insulana Garbage-line Web Spider
ARANEIDAE	Neoscona hirta	Hirta Hairy Field Spider
ARANEIDAE	Neoscona rapta	Hairy Field Spider
ARANEIDAE	Neoscona triangula	Red-spot Hairy Field Spider
CAPONIIDAE	Caponia spiralifera	Eight-eyed Orange Lungless Spider
CYATHOLIPIDAE		Tree Sheet-web Spider
ERESIDAE	Gandanameno fumosa	Tree Sheet-web Spider
ERESIDAE	Gandanameno spenceri	Tree Sheet-web Spider
ERESIDAE	Gandanameno spenceri	Tree Sheet-web Spider
ERESIDAE	Stegodyphus mimosarum	Community nest Spider
ERESIDAE		Velvet Spider
GNAPHOSIDAE	Camillina biplagia	Flat-bellied Ground Spider
GNAPHOSIDAE	Zelotes capsula	Flat-bellied Ground Spider
LYCOSIDAE	Hogna sp.	Borrow Living Wolf Spider
LYCOSIDAE		Wolf Spider
LYCOSIDAE		Wolf Spider
LYCOSIDAE		Wolf Spider
NEMESIIDAE	Spiroctenus sp.	Tube-trapdoor Spider
NEPHILIDAE	Nephila fenestrata	Black-legged Nephila
OXYOPIDAE		Lunx Spider
PALPIMANIDAE	Palpimanus capensis	Red Palp-footed Spider
PHALANGIIDAE		Harvestmen
PHALANGIIDAE		Harvestmen
PHOLCIDAE	Smeringopus natalensis	Daddy Long-legs
PHYXELIDIDAE		Hackled-mesh Web Weaver



Nursery-web Spider



Cape Orange Baboon Spider



Hairy Field Spider

SPIDERS



Wolf Spider



Flattie



Brown Botton



Velvet Spider



Baboon Spider



Cape Botton



Rain Spider



Hairy Field Spider



Banded Garden Orb-web



Funnel-web Spider



Rain Spider



Red Palp-footed Spider

SPIDERS & SCORPIANS continued



FAMILY	Common name	Status
Spiders		
PHYXELIDIDAE	Themacrys irrorata	Hackled-mesh Web weaver
PISAURIDAE		Nursery-web Spider
PISAURIDAE	Euprosthopsis pulchella	Nursery-web Spider
PISAURIDAE	Rothus purpurissatus	Crowned Pisaurids
SALTICIDAE	Heliophanus debilis	Jumping Spider
SALTICIDAE	Heliophanus sp.1	Jumping Spider
SALTICIDAE	Heliophanus sp.2	Jumping Spider
SALTICIDAE	Myrmarachne laurentina	Ant-jumping Spider
SALTICIDAE	Asemonea	Jumping Spider
SCYTODIDAE	Scytodes	Spitting Spider
SELENOPIIDAE	Anyphops capensis	Flatties
SPARASSIDAE	Palystes sp.1	Huntsman Spider
SPARASSIDAE	Palystes sp.2	Huntsman Spider
SPARASSIDAE	Palystes sp.3	Huntsman Spider
SPARASSIDAE	Palystes stilleri	Huntsman Spider
SPARASSIDAE	Palystes superciliosus	Huntsman Spider
SPARASSIDAE	Parapalystes sp.1	Huntsman Spider
SPARASSIDAE	Parapalystes sp.2	Huntsman Spider
TETRAGNATHIDAE	Leucauge festiva	Masked Vlei Spiders
THERAPHOSIDAE	Harpactira cafreriana	Cape Orange Badoon Spider
THERAPHOSIDAE	Harpactira atra	Cape Baboon Spider
THERIDIIDAE	Theridion sp.	False House Button Spider
THERIIDAE	Latrodectus geometricus	Brown Botton
THERIIDAE	Latrodectus indistinctus	Cape Button
THERIIDAE	Latrodectus rhodeniensis	Zimbabwean Button
THOMISIDAE	Xysticus urbensis	Crab Spider
Scorpions		
BUTHIDAE	Parabuthus capensis	Thick tailed scorpion
BUTHIDAE	Uroplectes lineatus	Bark scorpion
SCORPIONIDAE	Opistophtalmus glabrifrons	Burrowing scorpion
SCORPIONIDAE	Opistophtalmus macer	Burrowing scorpion



Burrowing Scorpion



Thick-tailed Scorpion



Fynbos Burrowing Scorpion



Bark Scorpion

INSECTS: Flies (Order:Diptera)



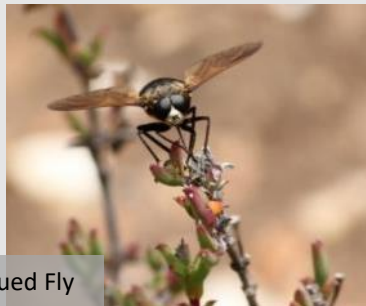
Asilidae	
Bombyliidae	
Calliphoridae	
Chironomidae	
Culicidae	
Drosophiliidae	
Lauxaniidae	<i>Cestrotus sp.</i>
Muscidae	
Scathophagidae	
Syrphidae	
Tabanidae	
Tachinidae	
Tipulidae	



Robber Fly



Long-tongued Fly



INSECTS: Bees (Order: Hymenoptera)



Family/Species	Common Names
Anthophoridae	
Apidae	
<i>Apis mellifera</i>	Honey Bee
Braconidae	
Eumenidae	
<i>Delta lepeleterii</i>	Potter Wasp
Formicidae	
<i>Dorylus helvolu</i>	
<i>Crematogaster peringueyi</i>	
<i>Camponotus fulvopilosus</i>	
Ichneumonidae	
<i>Enicospilus</i> sp.	Ichneumon wasp
Pompilidae	
<i>Tachypompilus ignitus</i>	
Pteromalidae	
<i>Trichilogaster acaciaelongifoliae</i>	Acacia Gall Wasp
Scoliidae	
Vespidae	
<i>Polistes fastidiosus</i>	Paper Wasp



Ichneumon wasp



Potter Wasp



Honey Bee



Flower Bee



Carpenter Bee

INSECTS: Beetles



<u>Family/ Species</u>	
<u>Anthicidae</u>	<u>Elateridae</u>
<u>Apionidae</u>	<u>Gyrinidae</u>
<u>Bostrichidae</u>	<u>Histeridae</u>
<u>Bruchidae</u>	<u>Hydrophilidae</u>
<u>Buprestidae</u>	<u>Lampyridae</u>
<u>Carabidae</u>	<i>Luciola sp.</i>
<i>Calosoma chlorostictum subsp. chlorostictum</i>	<u>Lycidae</u>
<i>Thermophilum decemguttatum</i>	<u>Meloidae</u>
<i>Graphipterus trilineatus</i>	<u>Melyridae</u>
<i>Caminara sp.</i>	<u>Mordellidae</u>
<u>Cerambycidae</u>	<u>Nitidulidae</u>
<i>Promeces longipes</i>	<u>Scarabaeidae</u>
<i>Gahania simmondsi</i>	<i>Rhinoceeta sp.</i>
<i>Erioderus hirtus</i>	<i>Ichneostoma cuspidata</i>
<i>Zographus oculator</i>	<i>Diplognatha gagates subsp. silicea</i>
<i>Phoracantha recurva</i>	<i>Epirinus</i>
<i>Prospilus serricornis</i>	<i>Schizonycha sp.</i>
<i>Africophanes amicus</i>	<i>Onthophagus sp.</i>
<u>Chrysomelidae</u>	Onitini
<u>Cleridae</u>	<i>Copris sexdentatus</i>
<i>Necrobia rufipes</i>	<u>Silphidae</u>
<i>Necrobia ruficollis</i>	<i>Thanatophilus micans</i>
<u>Coccinellidae</u>	<u>Silvanidae</u>
<i>Hippodamia variegata</i>	<u>Staphylinidae</u>
<i>Epilachna dregei</i>	<i>Bledius sp.</i>
<i>Cheilomenes lunata</i>	<u>Tenebrionidae</u>
<u>Curculionidae</u>	<i>Zophosis sp.</i>
<i>Bronchus sp.</i>	<i>Lagria vulnerata</i>
<u>Dermestidae</u>	<i>Eurychora</i>
<i>Dermestes maculata</i>	<i>Psammodes striatus</i>



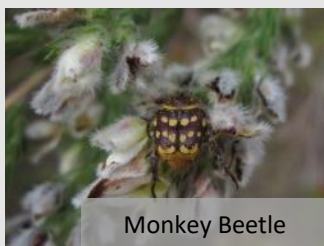
Longhorn Beetle



Chafer Beetle



Starred ground beetle



Monkey Beetle



Metalic Longhorn Beetle



Milkwood Borer

INSECTS: Beetles



Weevil



Horned Dung beetle



Longhorn Beetle



Firefly



Darkling Beetle



Blister Beetle

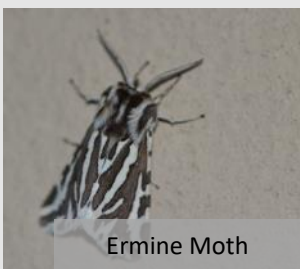
INSECTS: Moths and Butterflies (Order: Lepidoptera)



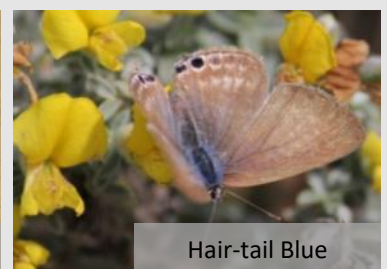
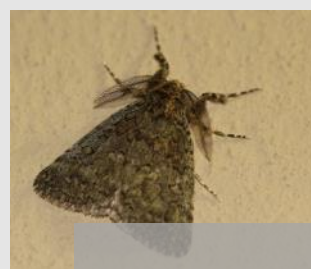
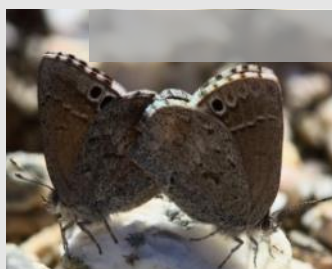
Family	Species	Common Name
Adelidae		Longhorn
Crambidae	<i>Cnaphalocrocis trapezalis</i> Guenée, 1854	Lined Pearl
Erebidae	<i>Amata</i> sp.	Maiden
	<i>Asota speciosa</i> Drury, 1773	Specious Tiger
	<i>Bracharoa dregei</i> Herrich -Schäffer, 1854	Brown Vapourer
	<i>Naroma varipes</i> , Walker, 1865	Fig-tree Moth
	<i>Rhodogastria amasis</i> Cramer, 1779	Tri-coloured Tiger
	<i>Teracotona</i>	
	<i>Thyretes caffra</i> , Wallengren, 1863	Bar Maiden
	<i>Utetheisa pulchella</i> Linnaeus, 1758	Crimson Speckled Footman
Eupterotidae	<i>Phyllalia patens</i> Boisduval, 1847	Clay Monkey
Hepialidae	<i>Eudalaca ammon</i> Wallengren, 1860	Crooked Swift
Lasiocampidae	<i>Bombycomorpha bifascia</i> Walker, 1855	Barred Eggarter
	<i>Eutricha capensis</i> Linnaeus, 1767	Cape Lappet
	<i>Mesocelis monticola</i> Hübner, 1820	Mountain White Spot
	<i>Streblote cristata</i> Stoll, 1782	Crested Nadiasa
Lycaenidae	<i>Chryсоритis chrysaor</i> Trimen, 1864	Burnished Opal
	<i>Leptomyrina lara</i> Linnaeus, 1764	Cape Black-eye
	<i>Phasis thero thero</i> Linnaeus, 1764	Silver Arrowhead
Noctuidae	<i>Brithys crini</i> Fabricius, 1775	Lily Leaf Miner
	<i>Diaphone eumela</i> Stoll, 1781	Cherry Spot
	<i>Spodoptera cilium</i> Guenée, 1852	Cape Lawn moth
	<i>Spodoptera littoralis</i> Boisduval, 1833	Tomato moth



Tri-coloured Tiger



Ermine Moth



Hair-tail Blue

INSECTS: Moths and Butterflies



Nymphalidae	<i>Junonia hierta cebrene</i> Trimen, 1870	Yellow Pansy
	<i>Torynesis mintha</i> subsp. <i>mintha</i>	Mintha Widow
	<i>Vanessa cardui</i> Linnaeus, 1758	Painted Lady
Papilionidae	<i>Papilio demodocus</i> Esper, 1799	Citrus Swallowtail
Pieridae	<i>Catopsilia florella</i> Fabricius, 1775	African Migrant
	<i>Pieris brassicae</i> Linnaeus, 1758	Cabbage White
	<i>Pontia helice helice</i> Linnaeus, 1764	Meadow White
Pyralidae	<i>Cactoblastis cactorum</i> Berg, 1885	Prickly Pear Moth
Saturniidae	<i>Gonimbrasia tyrrhea</i> Cramer, 1775	Zigzag Emperor
	<i>Heniocha apollonia</i> Cramer, 1779	Southern Marbled Emperor
	<i>Vegetia grimmia</i>	
Scythrididae	<i>Eretmocera laetissima</i> Zeller, 1852	Joyful Moth
Sphingidae	<i>Acherontia atropos</i> Linnaeus, 1758	Death's Head Hawk
	<i>Temnora pylas</i> Cramer, 1779	Lobed Temnora



Emperor Moth

Moths and Butterflies



INSECTS: Grasshoppers and Crickets (Order: Orthoptera)



Gryllacrididae	<i>Cophogryllus sp., Gryllus bimaculatus</i>
Bradyporidae	<i>Arytropteris sp.</i>
Tettigoniidae	
Gryllidae	
Gryllotalpidae	
Tridactylidae	
Pneumoridae	<i>Physemacris variolosus</i>
Pamphagidae	
Pyrgomorphidae	<i>Phymateus leprosus, Dictyophorus spumans</i>
Acrididae	<i>Acanthacris ruficornis, Gastrimargus</i>
Anostomatidae	
Lentulidae	
Stenopelmatidae	



Silver-spotted Bladder Grasshopper



Grasshopper



Katydid



Milkweed Locust



Saw-backed locust

INSECTS: Grasshoppers and Crickets (Order: Orthoptera)



INSECTS: Bugs



ORDER/FAMILY	Species
Order: Hemiptera	
Alydidae	
Aleyrodidae	
Aphididae	
Cercopidae	
Cicadellidae	
Cicadidae	
Cimicidae	
Coccidae	
Coreidae	
Corixidae	
Cydnidae	
Dactylopiidae	
Diaspididae	
Flatidae	
Fulgoridae	
Gerridae	
Lygaeidae	
Margodidae	
Mesoveliidae	
Notonectidae	
Pentatomidae	
Pyrrhocoridae	<i>Cenaeus carnifex, Scantius forsteri</i>
Reduviidae	<i>Ectrichodia crux, Glymmatophora</i>
Scutelleridae	
Veliidae	



Antlion



Red Bug

INSECTS continued



ORDER/FAMILY	Species
Order: Neuroptera	
Ascalaphidae	
Chrysopidae	
Coniopterygidae	
Mantispidae	
Myrmeleontidae	
Hemerobiidae	
Order: Thysanura	
Lepismatidae	
Nicoletiidae	
Order: Archaeognatha	
Meinertellidae	
Order: Odonata	
Aeshnidae	
Coenagrionidae	
Gomphidae	
Libellulidae	
Order: Blattodea	
Blaberidae	
Blatellidae	<i>Blatella germanica</i>
Blattidae	<i>Deropeltis erythrocephala, Rooivoorkant</i>
Pseudophyllodromiidae	



Owl Fly (Antlion)



INSECTS continued



ORDER/FAMILY	Species
Order: Isoptera	
Kalotermitidae	
Termitidae	<i>Trinervitermes sp.</i>
Hodotermitidae	<i>Microhodotermes viator</i>
Order: Mantodea	
Empusidae	<i>Hemiempusa capensis</i>
Hymeopodidae	
Mantidae	
Thespidae	
Order: Dermaptera	
Labiduridae	
Forficulidae	<i>Forficula senegalensis</i>
Order: Phasmatodea	
Bacillidae	
Heteronemiidae	
Order: Siphonaptera	
Chiaistopsyllidae	
Hystrichopsyllidae	
Pulicidae	



Snouted harvester termites



Stink Cockroach



Cockroach

INSECTS continued



ORDER/FAMILY	Species
Order: Psocoptera	
Liposcelidae	
Psocidae	
Order: Collembola	
Poduroidea	
Sminthuridae	
Order: Phthiraptera	
Menoponidae	
Philopteridae	
Polyplacidae	



Damselfly



Tri-coloured Tiger



Acknowledgements

The Overberg Renosterveld Conservation Trust would like to thank the following individuals and organizations for aiding with the collection of these data and the preservation of this biodiversity hotspot.

Fauna and Flora International, UK: for funding camera traps, field equipment, contributing towards the establishment of the Centre and management interventions on Haarwegskloof.

WWF-SA: for purchasing this reserve and entrusting it into our care.

Individuals who contributed to the compilation of species lists on the reserve and provided traps, time and expertise include: Clifford & Suretha Dorse, Keir & Alouise Lynch and Barry & Rozelle Rose, Jannie Groenewald & Odette Curtis.

