



REVOLUTIONARY
TECHNOLOGY MEETS
REMARKABLE
PERFORMANCE



HP LaserJet Managed
MFPs and Printers



Uncompromising VISION

Exceptional RESULTS

HP LaserJet Managed MFPs and Printers were developed specifically to address essential business printing needs—today and tomorrow.



When we set out to create this line of LaserJet printers, we tasked our engineers and product teams with designing and developing printers that combined—without compromise—extraordinary design and user experience; exceptional print quality and reliability, even under the heaviest workloads; security that's unmatched in the industry; and extensibility features that allow them to adapt to and benefit from new technologies and new capabilities.



As the engineers, designers, and programmers progressed, they continuously validated their decisions against the most important metrics: real-world user expectations and business demands.

The result is an extraordinary portfolio that delivers brilliant, professional-quality prints at a remarkable price.





PERFORMANCE

From ideas to output

Performance tells the story. Whether you're printing five pages or fifty, colour or black and white, HP LaserJet Managed MFPs and Printers deliver the professional performance you'd expect from an enterprise machine.

- **Virtually eliminate warm-up time**

These devices feature fusers that warm rapidly and cool quickly, so they start printing sooner, complete jobs faster, and help you conserve more energy.¹

- **Spend less time on maintenance**

These devices require significantly fewer replacement parts, and no manual cleaning of printer components is required to maintain print quality.²

- **Get the best print quality automatically, right out of the box**

There's no need to change driver settings or the control panel. HP LaserJets employ built-in proprietary image enhancement technologies that consistently render vibrant and sharp colour prints, page after page.

- **Minimise downtime**

Original HP LaserJet High-Yield Cartridges can help you print more pages, more affordably.

DESIGN

Purposeful and professional

Design is about more than aesthetics. Done with purpose, it connects form to function—promising performance and conveying confidence. In HP LaserJet Managed MFPs and Printers, simple, intelligent design delivers functionality for today and adaptability for the future.

- Cutting-edge technologies minimise paper jams and faulty inputs.
- Modular feed and finishing accessories offer customisable configuration options.
- User-facing design expedites workflows and print services at the device.
- Efficient scanning, copying, and document digitisation at the device save time and resources.
- Touchscreen controls and a pull-out keyboard allow for seamless monitoring, editing, and updating of works in progress.
- HP JetAdvantage On Demand lets you easily print from your desktop PC, mobile device, or company cloud.





WORKFLOW

Effortless integration

HP LaserJet Flow MFPs offer advanced workflow capabilities at the device that optimise your productivity through quick alignment with current workflows and demands. Flow solutions help you capture the right content, organise, and distribute it quickly, easily, and accurately—helping you save time and effort on complex scanning and printing projects.³



Auto-orientation, auto-page crop, and auto-tone

Advanced document management features simplify production and perfect the contrast, brightness, and background removal of each page.



Built-in optical character recognition (OCR)

The OCR simplifies editable and searchable scans.



Fast two-sided, single-pass scanning

Scan faster and more reliably with speeds up to 200 ipm⁴ and an extended-life ADF that supports higher recommended monthly scan volumes.⁵



Large 8.1-inch touchscreen control panel

Advanced imaging and processing options, including send to Microsoft® SharePoint®, built-in OCR, auto-orientation, auto-page-crop, and auto-tone.



Embedded HP EveryPage technology

Scan every page and detect potential errors or missed pages on the spot—even when the weight, size, or condition of pages vary.



Large pull-out keyboard for simplified data entry

Make scanned documents easier to organise and find by adding information to files and context to your email.



HP Quick Sets

Find the right document workflow every time, and run it correctly at the touch of a button. HP Quick Sets automates all the steps of a complicated workflow, on a full-colour touchscreen that's easy to use.

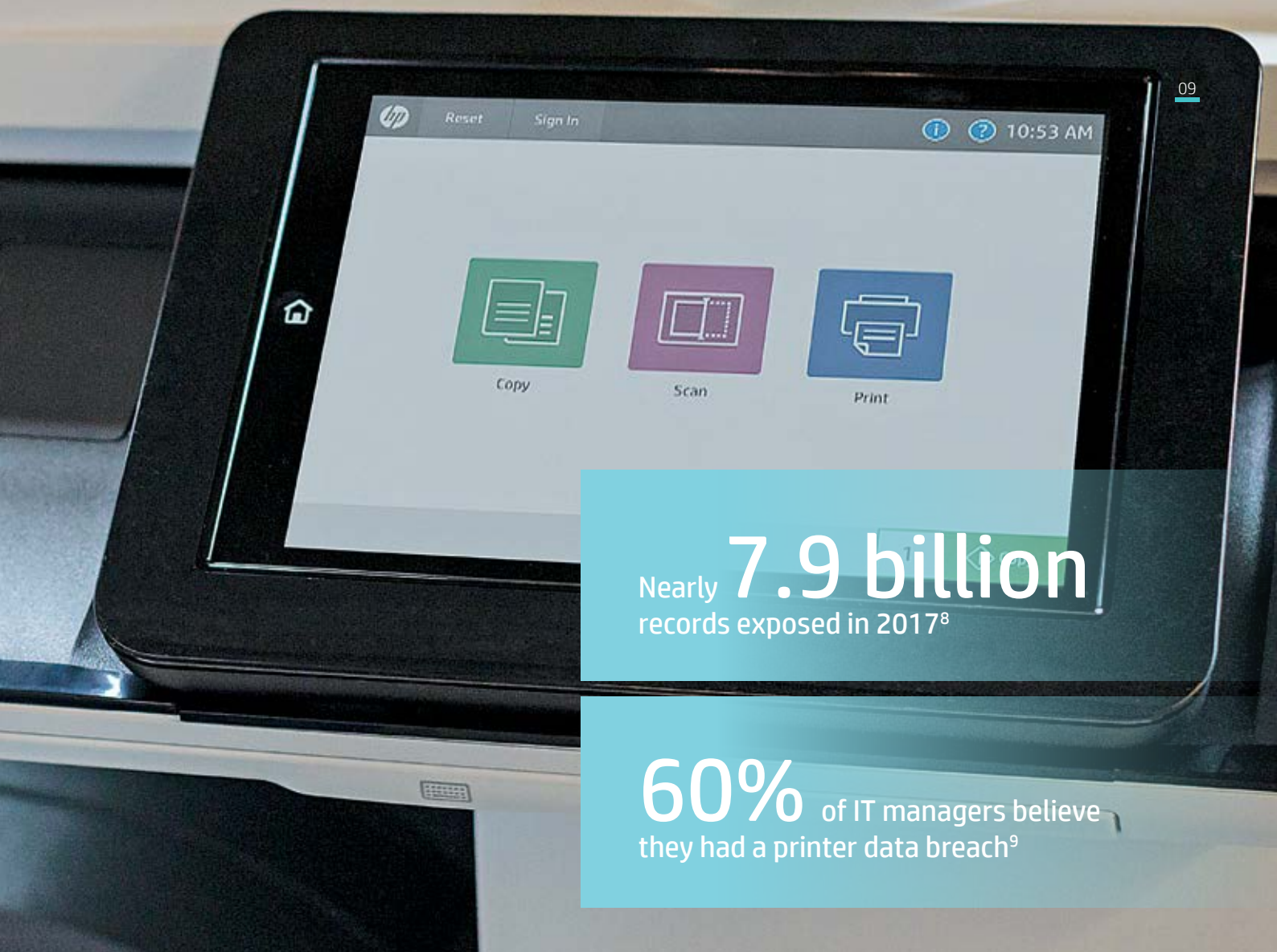


SECURITY

HP's most secure printing⁷

Today, hackers have their eyes on businesses. The most destructive exploits are attacking networks through endpoint devices—and not just PCs, tablets, and smartphones. Networked printers are a new front line, vulnerable to attacks and security breaches. Hackers can intercept printing and imaging jobs traveling over the network from devices to printers, manipulate printer settings and functions from unsecured control panels, and access privileged data via unsecured USB or network ports.

The good news? HP saw it coming. We developed LaserJet Enterprise Managed MFPs and Printers with embedded security features covering device, data, and document risks. These solutions change the equation—transforming networked printers from vulnerabilities to strongpoints.



Nearly **7.9 billion**
records exposed in 2017⁸

60% of IT managers believe
they had a printer data breach⁹



SECURE THE DEVICE

- HP SureStart monitors and maintains the BIOS
- Whitelisting helps protect the firmware
- Run-time intrusion detection keeps memory safe
- HP Connection Inspector stops suspicious network connections



SECURE THE DATA

- Authentication helps blocks unauthorised access
- Encryption helps keep data safe



SECURE THE DOCUMENT

- Workplace privacy and compliance through secure document workflows
- Anti-counterfeit tools deter tampering and fraud

Easily manage security across the fleet

HP JetAdvantage Security Manager streamlines fleet management with policy-based print security compliance.¹⁰ HP LaserJet Managed MFPs and Printers can send printer event data to Security Information and Event Management (SIEM) tools for real-time threat monitoring.

For more information on HP printing security features, visit hp.com/go/printersthatprotect.

A close-up photograph of a white HP printer with a black control panel. A tablet is docked in the control panel, displaying the HP mobile interface. The interface includes the HP logo, a 'Reset' button, a home icon, and a green document icon labeled 'Cop'. The printer's keyboard is visible in the foreground.

EXTENSIBILITY

Forward-thinking adaptability

Technology, capabilities, and user expectations never stop evolving, and HP FutureSmart Firmware and the HP Open Extensibility Platform (OXP) let your printers evolve as well.

FutureSmart firmware

- Extends the life of the printer
- Offers consistency across your entire fleet via an intuitive interface
- Simplifies fleet-wide updates
- Allows your existing HP devices to be equipped with next-generation features¹¹

HP OXP

- Creates a unified environment for third-party software companies and enabled imaging and printing devices
- Integrates the third-party solutions you rely on today with your printer fleet tomorrow





SOLUTIONS

Focus on results

Help reduce costs, increase work efficiency, and accelerate business results with HP printing solutions. Help streamline information workflows by optimising your IT infrastructures, managing your imaging and printing environments, and improving document intensive processes.

HP Roam for Business offers secure, cloud-based printing from virtually any location and device. Automatically discover nearby HP Roam-enabled printers in the office, at a home office, or at a growing number of public print locations.¹² Authenticate, retrieve, and print the job securely—no need to worry about device-to-printer compatibility or connectivity.

HP Access Control Printing Solutions help you provide print authentication, authorisation, and secure pull-printing capabilities across your organisation, and help you protect sensitive information with custom user controls and usage rights. Proximity card readers can be attached externally or placed in the Hardware Integration Pocket (HIP) of supported devices.¹³

HP Embedded Capture eliminates the need for a server and simplifies the digitisation of your documents by digitised predetermined scanning information.

HP Capture and Route controls and tracks scanned content once it has been digitised and distributes it to its printing location.



Introducing HP JetAdvantage On Demand

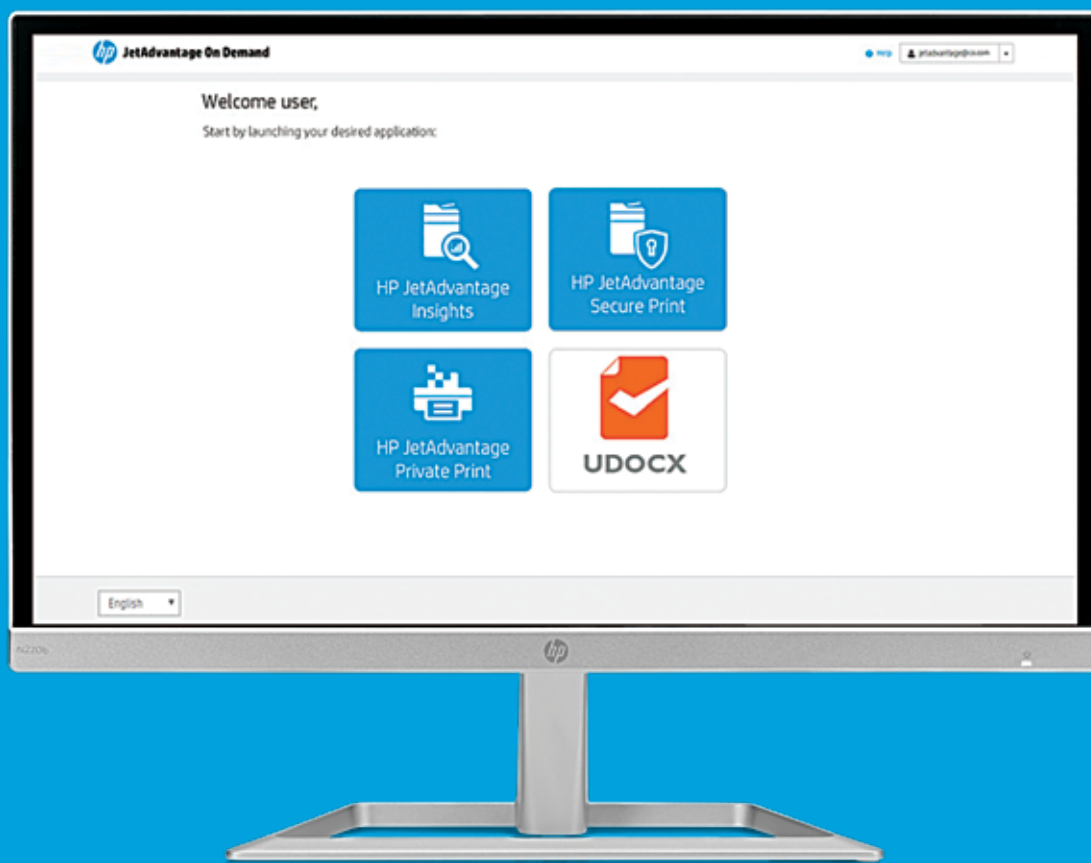
HP JetAdvantage On Demand is the industry's first software as a service (SaaS) portal that allows for easy and cost-effective management of both apps and user access to those apps.¹⁴

HP JetAdvantage Private Print helps secure documents with a pull printing app for select HP devices.

HP JetAdvantage Secure Print helps secure and track print jobs for all HP and non-HP networked devices.

HP JetAdvantage Insights optimises the print environment by transforming data into action.

Udocx (third-party solution) increases productivity and improves corporate efficiency by uniformly digitising all your documents.





Meet the HP A3 LaserJet E700XX and E800XX series

The next generation of quality, productivity, and security

Businesses that stay ahead don't slow down. It's why HP created the next generation of HP LaserJet Managed MFPs—to power office productivity with a smart, streamlined design that's reliable and hassle-free. Count on premium quality, maximum uptime, and the advanced security—all made to drive successful organisations forward.⁷

For more information on the latest HP LaserJet Managed MFPs and Printers, watch the video [here](#).*

* <http://www8.hp.com/us/en/printers/a3-multifunction/managed-color-laserjet-printer.html>

Our latest LaserJet Managed MFPs and Printers redefine excellence with game-changing LaserJet printing innovations:

Low operating cost per page (OCP) with long life consumables and field-replaceable parts

Flow options on most models

More robust page volume and engine life (up to 100,000 pages RMPV¹⁵)

Larger and faster; up to 250 sheet ADF

Latest HP FutureSmart printer firmware¹¹

Flexible, modular paper handling and finishing for maximum productivity

Device-based sensing capabilities that monitor and diagnose many service needs

Smaller footprint than previous generation



HP A3 LaserJet Managed Portfolio



Colour A3

25 ppm price class		35 ppm price class		45 ppm price class			55 ppm price class
Color LaserJet Managed MFP E77822	Color LaserJet Managed MFP E77825	Color LaserJet Managed MFP E77830	Color LaserJet Managed MFP E87640	Color LaserJet Managed MFP M775	Color LaserJet Managed MFP E87650	Color LaserJet Managed Flow MFP M880	Color LaserJet Managed MFP E87660
Up to 22 ppm ¹⁶	Up to 25 ppm ¹⁶	Up to 30 ppm ¹⁶	Up to 40 ppm ¹⁶	Up to 30 ppm ¹⁶	Up to 50 ppm ¹⁶	Up to 45 ppm ¹⁶	Up to 60 ppm ¹⁶
Up to 3,140 input ¹⁷	Up to 3,140 input ¹⁷	Up to 3,140 input ¹⁷	Up to 6,140 input ¹⁷	Up to 4,350 input ¹⁷	Up to 6,140 input ¹⁷	Up to 4,100 input ¹⁷	Up to 6,140 input ¹⁷
Up to 50,000 RMPV ¹⁵	Up to 50,000 RMPV ¹⁵	Up to 50,000 RMPV ¹⁵	Up to 100,000 RMPV ¹⁵	Up to 30,000 RMPV ¹⁵	Up to 100,000 RMPV ¹⁵	Up to 50,000 RMPV ¹⁵	Up to 100,000 RMPV ¹⁵

HP A3 LaserJet accessories

Our A3 features go beyond the printed document. To deliver a truly professional printing experience, HP offers optional accessories to help you bind content together, feed multiple sizes of paper, and finish the job with clean staples and hole punches.



Monochrome A3

25 ppm price class	35 ppm price class			45 ppm price class		55 ppm price class	
							
LaserJet Managed MFP E72525	LaserJet Managed MFP E72530	LaserJet Managed MFP E72535	LaserJet Managed MFP E82540	LaserJet Managed MFP M725	LaserJet Managed MFP E82550	LaserJet Managed MFP M830	LaserJet Managed MFP E82560
Up to 25 ppm ¹⁶	Up to 30 ppm ¹⁶	Up to 35 ppm ¹⁶	Up to 40 ppm ¹⁶	Up to 40 ppm ¹⁶	Up to 50 ppm ¹⁶	Up to 55 ppm ¹⁶	Up to 60 ppm ¹⁶
Up to 3,140 input ¹⁷	Up to 3,140 input ¹⁷	Up to 3,140 input ¹⁷	Up to 6,140 input ¹⁷	Up to 4,600 input ¹⁷	Up to 6,140 input ¹⁷	Up to 4,600 input ¹⁷	Up to 6,140 input ¹⁷
Up to 50,000 RMPV ¹⁵	Up to 50,000 RMPV ¹⁵	Up to 50,000 RMPV ¹⁵	Up to 100,000 RMPV ¹⁵	Up to 40,000 RMPV ¹⁵	Up to 100,000 RMPV ¹⁵	Up to 100,000 RMPV ¹⁵	Up to 100,000 RMPV ¹⁵



2x520-sheet feeder



2,000-sheet high-capacity input



3,000-sheet side high-capacity input¹⁸



Inner finisher hole punch¹⁹



Stapler/stacker/hole punch²⁰



Booklet finisher²⁰

HP A4 LaserJet Managed Portfolio



Colour A4

25 ppm price class



**Color LaserJet
Managed
E55040dw**

Up to 38 ppm¹⁶

Up to 2,300
input¹⁷

Up to 15,000
RMPV¹⁵

**Color LaserJet
Managed
MFP E57540**

Up to 38 ppm¹⁶

Up to 2,300
input¹⁷

Up to 15,000
RMPV¹⁵

45 ppm price class



**Color LaserJet
Managed
E65050dn**

Up to 47 ppm¹⁶

Up to 3,200
input¹⁷

Up to 24,000
RMPV¹⁵

**Color LaserJet
Managed MFP
E67550dh**

Up to 47 ppm¹⁶

Up to 3,200
input¹⁷

Up to 24,000
RMPV¹⁵

**Color LaserJet
Managed
E65060dn**

Up to 56 ppm¹⁶

Up to 3,200
input¹⁷

Up to 30,000
RMPV¹⁵

55 ppm price class



**Color LaserJet
Managed MFP
E67560z**

Up to 56 ppm¹⁶

Up to 3,200
input¹⁷

Up to 30,000
RMPV¹⁵

HP A4 LaserJet accessories

Add features to your HP A4 LaserJet Managed MFPs and Printers for a customised user experience that fits your workplace needs.

Monochrome A4

25 ppm price class



LaserJet Managed E50045dw

Up to 45 ppm¹⁶
Up to 2,300 input¹⁷
Up to 15,000 RMPV¹⁵

35 ppm price class



LaserJet Managed MFP E52545

Up to 45 ppm¹⁶
Up to 2,300 input¹⁷
Up to 15,000 RMPV¹⁵

55 ppm price class



LaserJet Managed E60055dn

Up to 52 ppm¹⁶
Up to 4,400 input¹⁷
Up to 30,000 RMPV¹⁵



LaserJet Managed MFP E62555dn

Up to 52 ppm¹⁶
Up to 3,750 input¹⁷
Up to 40,000 RMPV¹⁵

65+ ppm price class



LaserJet Managed E60065dn

Up to 61 ppm¹⁶
Up to 4,400 input¹⁷
Up to 40,000 RMPV¹⁵



LaserJet Managed MFP E62565

Up to 61 ppm¹⁶
Up to 3,750 input¹⁷
Up to 40,000 RMPV¹⁵



LaserJet Managed MFP E62575z

Up to 71 ppm¹⁶
Up to 3,750 input¹⁷
Up to 40,000 RMPV¹⁵



LaserJet Managed E60075dn

Up to 71 ppm¹⁶
Up to 4,400 input¹⁷
Up to 50,000 RMPV¹⁵



550-sheet feeder



Printer stand and cabinet



500-sheet feeder and cabinet



2,500-sheet HCI and stand



Stapler/stacker/mailbox

HP Color LaserJet A3 Managed

	Color LaserJet Managed MFP E77822/ MFP E77825	Color LaserJet Managed MFP E77830	Color LaserJet Managed MFP E87640	Color LaserJet Managed MFP M775	Color LaserJet Managed MFP E87650	Color LaserJet Managed Flow MFP M880	Color LaserJet Managed MFP E87660
Product number	E77822dn: X3A61A + X3A78A or Z8Z00A; Flow E77822z: X3A64A + X3A77A or Z8Z01A E77825dn: X3A61A + X3A81A or Z8Z02A; Flow E77825z: X3A64A + X3A80A or Z8Z03A	E77830dn: X3A61A + X3A84A or Z8Z04A; Flow E77830z: X3A64A + X3A83A or Z8Z05A	E87640dn: X3A73A + X3A87A or Z8Z12A; Flow E87640z: X3A76A + X3A86A or Z8Z13A	M775fm: L3U49A M775zm: L3U50A	E87650dn: X3A73A + X3A90A or Z8Z14A; Flow E87650z: X3A76A + X3A89A or Z8Z15A	Flow M880zm: L3U51A; Flow M880zm+: L3U52A	E87660dn: X3A73A + X3A93A or Z8Z16A; Flow E87660z: X3A76A + X3A92A or Z8Z17A
Control panel	20.3 cm (8.0-inch) colour touchscreen; Flow models: pull-out keyboard			20.3 cm (8.0-inch) colour touchscreen	20.3 cm (8.0-inch) colour touchscreen; Flow model: pull-out keyboard	20.3 cm (8.0-inch) colour touchscreen; Flow model: pull-out keyboard	20.3 cm (8.0-inch) colour touchscreen Flow model: pull-out keyboard
Print speed (A4 and letter)¹⁶	E77822: Up to 22 ppm E77825: Up to 25 ppm	Up to 30 ppm	Up to 40 ppm	Up to 30 ppm	Up to 50 ppm	Up to 46 ppm, A4 (45 ppm, letter)	Up to 60 ppm
Input¹⁷	1,140 to 3,140 sheets		1,140 to 6,140 sheets	1,350 to 4,350 sheets	1,140 to 6,140 sheets	2,100 to 4,100 sheets	1,140 to 6,140 sheets
RMPV¹⁵	Up to 50,000 pages	Up to 50,000 pages	Up to 50,000 pages	Up to 30,000 pages	Up to 50,000 pages	Up to 50,000 pages	Up to 50,000 pages

HP Monochrome LaserJet A3 Managed

	LaserJet Managed MFP E72525/ MFP E72530	LaserJet Managed MFP E72535	LaserJet Managed MFP E82540	LaserJet Managed MFP M725	LaserJet Managed MFP E82550	LaserJet Managed MFP M830	LaserJet Managed MFP E82560
Product number	E72525dn: X3A67A + X3A60A or Z8Z06A; Flow E72525z: X3A70A + X3A59A or Z8Z07A E72530dn: X3A67A + X3A63A or Z8Z08A; Flow E72530z: X3A70A + X3A62A or Z8Z09A	E72535dn: X3A67A + X3A66A or Z8Z10A; Flow E72535z: X3A70A + X3A65A or Z8Z11A	E82540dn: X3A79A + X3A69A or Z8Z18A; Flow E82540z: X3A82A + X3A68A or Z8Z19A	M725dnm: L3U63A M725zm: L3U64A	E82550dn: X3A79A + X3A72A or Z8Z20A; Flow E82550z: X3A82A + X3A71A or Z8Z21A	Flow M830zm: L3U65A	E82560dn: X3A79A + X3A75A or Z8Z22A; Flow E82560z: X3A82A + X3A74A or Z8Z23A
Control panel	20.3 cm (8.0-inch) colour touchscreen; Flow models: pull-out keyboard			20.3 cm (8.0-inch) colour touchscreen	20.3 cm (8.0-inch) colour touchscreen; Flow model: pull-out keyboard	20.3 cm (8.0-inch) colour touchscreen; Flow model: pull-out keyboard	20.3 cm (8.0-inch) colour touchscreen; Flow model: pull-out keyboard
Print speed (A4 and letter)¹⁶	E72525: Up to 25 ppm E72530: Up to 30 ppm	Up to 35 ppm	Up to 40 ppm	Up to 41 ppm, A4 (40 ppm, letter)	Up to 50 ppm	Up to 55 ppm	Up to 60 ppm
Input¹⁷	1,140 to 3,140 sheets		1,140 to 6,140 sheets	600 to 4,600 sheets	1,140 to 6,140 sheets	4,600 sheets	1,140 to 6,140 sheets
RMPV¹⁵	Up to 50,000 pages	Up to 50,000 pages	Up to 100,000 pages	Up to 40,000 pages	Up to 100,000 pages	Up to 100,000 pages	Up to 100,000 pages

HP Color LaserJet A4 Managed

	Color LaserJet Managed E55040	Color LaserJet Managed MFP E57540
Product number	E55040dw: 3GX98A	E57540dn: 3GY25A Flow E57540c: 3GY26A
Control panel	10.9 cm (4.3-inch) colour touchscreen	20.3 cm (8.0-inch) colour touchscreen; Flow model: pull-out keyboard
Print speed ¹⁶	Up to 40 ppm, A4 and letter	
Input ¹⁷	650 to 2,300 sheets	
RMPV ¹⁵	Up to 15,000 pages	

	Color LaserJet Managed E65050	Color LaserJet Managed E65060	Color LaserJet Managed MFP E67550	Color LaserJet Managed MFP E67560
Product number	E65050dn: L3U55A	E65060dn: L3U56A	E67550dh: L3U66A	E67560z: L3U70A
Control panel	6.9 cm (2.7-inch) colour graphics display with keypad	10.9 cm (4.3-inch) icon-based colour touchscreen	20.3 cm (8.0-inch) icon-based colour touchscreen	20.3 cm (8.0-inch) icon-based colour touchscreen
Print speed (A4/letter) ¹⁶	Up to 47/50 ppm	Up to 56/60 ppm	Up to 47/50 ppm	Up to 56/60 ppm
Input ¹⁷	Up to 3,200 sheets		Up to 3,200 sheets	
RMPV ¹⁵	Up to 24,000 pages	Up to 30,000 pages	Up to 24,000 pages	Up to 30,000 pages

HP Monochrome LaserJet A4 Managed

	LaserJet Managed E50045	LaserJet Managed MFP E52545
Product number	E50045dw: 3GN19A	E52545dn: 3GY19A Flow E52545c: 3GY20A
Control panel	10.9 cm (4.3-inch) colour touchscreen	20.3 cm (8.0-inch) colour touchscreen; Flow model: pull-out keyboard
Print speed (A4 and letter)¹⁶	Up to 45 ppm	Up to 45 ppm
Input¹⁷	650 to 2,300 sheets	
RMPV¹⁵	Up to 15,000 pages	

	LaserJet Managed E60055	LaserJet Managed E60065	LaserJet Managed E60075	LaserJet Managed MFP E62555	LaserJet Managed MFP E62565	LaserJet Managed MFP E62575
Product number	E60055dn: MOP33A	E60065dn: MOP35A E60065x: MOP36A	E60075dn: MOP39A E60075x: MOP40A	E62555dn: J8J66A	E62565hs: J8J73A Flow E62565h: J8J74A Flow E62565z: J8J79A	Flow E62575z: J8J80A
Control panel	6.9 cm (2.7-inch) LCD with keypad	E60065dn/E60075dn: 6.9 cm (2.7-inch) LCD with keypad E60065x/E60075x: 10.9 cm (4.3-inch) colour touchscreen control panel		20.3 cm (8.0-inch) intuitive icon-based colour touchscreen		
Print speed (A4/letter)¹⁶	Up to 52/55 ppm	Up to 61/65 ppm	Up to 71/75 ppm	Up to 52/55 ppm	Up to 61/65 ppm	Up to 71/75 ppm
Input¹⁷	Up to 4,400			Up to 3,750 sheets		
RMPV¹⁵	Up to 30,000 pages	Up to 40,000 pages	Up to 50,000 pages	Up to 40,000 pages		

Optional LaserJet A3 input and finishing accessories

Devices	Compatible accessories
LaserJet Managed MFP E72525, MFP E72530, MFP E72535; Color LaserJet Managed MFP E77822, MFP E77825, MFP E77830	Input: 2x520-sheet feeder (Y1F97A), cabinet (Y1G17A), 2,000-sheet high-capacity input (Y1F99A) Output: inner finisher (Y1G00A), ¹⁹ inner finisher with 2/3 hole punch (Y1G02A), inner finisher with 2/4 hole punch (Y1G03A), inner finisher with Swedish Hole Punch (Y1G04A), stapler/stacker finisher (Y1G18A), ²⁰ booklet finisher (Y1G07A), ²⁰ 2/3 hole punch (Y1G10A), 2/4 hole punch (Y1G11A), Swedish Hole Punch (Y1G12A), job separator (Y1G15A), tray heater (Y1G22A), 2nd exit (Y1G23A), spacer (Y1G24A)
LaserJet Managed MFP E82540, MFP E82550, MFP E82560; Color LaserJet Managed MFP E87640, MFP E87650, MFP E87660	Input: 2x520-sheet feeder (Y1F98A), cabinet (Y1G16A), 2,000-sheet high-capacity input (Y1G21A), 3,000-sheet side high-capacity input (Y1G20A) Output: inner finisher (Y1G00A), ¹⁹ inner finisher with 2/3 hole punch (Y1G02A), inner finisher with 2/4 hole punch (Y1G03A), inner finisher with Swedish Hole Punch (Y1G04A), stapler/stacker finisher (Y1G18A), ²⁰ booklet finisher (Y1G07A), ²⁰ 2/3 hole punch (Y1G10A), 2/4 hole punch (Y1G11A), Swedish Hole Punch (Y1G12A), job separator (Y1G01A)
LaserJet Managed MFP M725	Input: 500-sheet feeder (CF239A), 1x500-sheet feeder, cabinet, and stand (CF243A), 3x500-sheet feeder and stand (CF242A), 3,500-sheet HCl and stand (CF245A) Output: Not applicable
Color LaserJet Managed MFP M775	Input: 500-sheet feeder (CE860A), 1x500-sheet feeder with cabinet (CE792A), 3x500-sheet feeder and stand (CE725A), 3,500-sheet HCl and stand (CF305A) Output: Not applicable
LaserJet Managed MFP M830	Input: 3 x 500-sheet feeder and stand (C1N63A), 3,500-sheet HCl and stand (C1N64A) Output: Booklet maker/finisher (CZ285A), stapler/stacker (CZ994A), stapler/stacker with 2/3 hole punch (CZ995A)
Color LaserJet Managed MFP M880	Input: 3 x 500-sheet feeder and stand (C1N63A), 3,500-sheet HCl and stand (C1N64A) Output: Booklet maker/finisher with 2/3 hole punch (A2W84A), stapler/stacker (A2W80A), stapler/stacker with 2/4 hole punch (A2W82A), booklet maker/finisher (A2W83A), booklet maker/finisher with 2/4 hole punch (CZ999A)

Optional LaserJet A4 input and finishing accessories

Devices	Compatible accessories
LaserJet Managed E50045, LaserJet Managed MFP E52545	Input: 550-sheet feeder (F2A72A), printer stand and cabinet (F2A73A) Output: Not applicable
Color LaserJet Managed E55040, Color LaserJet Managed MFP E57540	Input: 550-sheet feeder (B5L34A), printer stand and cabinet (B5L51A) Output: Not applicable
LaserJet Managed E60055dn, LaserJet Managed E60065dn, LaserJet Managed E60075dn	Input: 550-sheet paper feeder (LOH17A), 2100-sheet paper feeder (LOH18A), envelope feeder (LOH21A), printer stand (LOH19A) Output: Stapler/stacker/ mailbox (LOH20A)
LaserJet Managed MFP E62555dn	Input: 550-sheet paper feeder (J8J89A), 1x550-sheet paper feeder with stand and cabinet (J8J91A), 3x550-sheet paper feeder and stand (J8J93A), 1x550 and 2,000-sheet HCl feeder and stand (J8J92A), envelope feeder (J8J90A) Output: Not applicable
Color LaserJet E65050dn Color LaserJet E65060dn Color LaserJet Managed MFP E67550dh Color LaserJet Managed MFP E67560z	Input: 1x550-sheet paper feeder (P1B09A), 1x550-sheet paper feed with stand and cabinet (P1B10A), 3x550-sheet paper feeder and stand (P1B11A), 1x550 and 2,000-sheet HCl feeder and stand (P1B12A) Output: Not applicable
LaserJet Managed MFP E62565 LaserJet Managed MFP E62575z	Input: 550-sheet paper feeder (J8J89A), 1x550-sheet paper feeder with stand and cabinet (J8J91A), 3x550-sheet paper feeder and stand (J8J93A), 1x550 and 2,000-sheet HCl feeder and stand (J8J92A), envelope feeder (J8J90A) Output: Not applicable



HP Financial Services

HP Financial Services (HPFS) can help you deliver a complete LaserJet print solution to your customer and accelerate their transition to new HP technology, whilst allowing them to preserve budget for other priorities. As the preferred HP financing partner, HPFS has flexible financing solutions to meet your customer's unique business needs.²¹



For more information, visit

hp.com/go/managedA3

1. Compared to previous generations of laser printers. 2. Fewer service parts claim based on BLI analysis of leading in-class A3 MFPs as of August 2016; calculations use publicly available and/or published manufacturer rated yields for longlife consumables and assume 600,000 pages printed (using a 60% black/40% colour ratio); market share as reported by IDC as of Q2 2016. 3. Flow MFP bundles not available for all models. See pages 20 through 22 for more information. 4. Scan speeds measured from ADF. Actual processing speeds may vary depending on scan resolution, network conditions, computer performance, and application software. 5. HP recommends that the number of scanned pages per month be within the stated range for optimum device performance, based on factors including supplies replacement intervals and device life over an extended warranty period. 6. Requires an Internet connection to the printer. Services may require registration. App availability varies by country, language, and agreements. For details, see hpconnected.com. 7. Based on HP review of 2017 published security features of HP printers. HP offers a combination of security features that can monitor to detect and automatically stop an attack then self-validate software integrity in a reboot. For a list of printers, visit: hp.com/go/PrintersThatProtect. For more information, visit: hp.com/go/printersecurityclaims. 8. 2017 saw more than 5,200 breaches that exposed nearly 7.9 billion records. 2017 Year End Data Breach QuickView Report by Risk Based Security/Cyber Risk Analytics, January 2018. 9. CRN, "HP Exec: It's Time Partners Wise Up to the Grave Printer Security Threat," Steve Burke, October 2017. 10. HP JetAdvantage Security Manager must be purchased separately. To learn more, please visit: hp.com/go/securitymanager. 11. Some features enabled by future HP FutureSmart upgrades may not be available on older devices if, for example, physical product characteristics limit the functionality of the new feature. 12. Printing at some public printing locations may incur extra charges. 13. Solutions deployed through the Hardware Integration Pocket (HIP) may require additional purchase. 14. Based on an HP assessment of print manufacturers SaaS offerings as of September 1, 2016, no other print manufacturer offers a single platform for user and app management. Requires Internet access. Supported browsers include Microsoft® Internet Explorer® 9–11, Google Chrome™ 9 and newer, Mozilla® Firefox® 4 and newer, and Safari® 5 and newer. Compatible with select HP LaserJet, PageWide, OfficeJet Pro, and Digital Sender Flow devices that can connect to the Internet. May require a firmware upgrade. Learn more at hp.com/go/jetadvantageondemand. 15. Recommended Monthly Page Volume: HP recommends that the number of printed pages per month be within the stated range for optimum device performance, based on factors including supplies replacement intervals and device life over an extended warranty period. 16. Measured using ISO/IEC 24734, excludes first set of test documents. For more information, see hp.com/go/printerclaims. Exact speed varies depending on the system configuration, software application, driver, and document complexity. 17. Maximum input capacity may require purchase of additional optional input accessory. 18. Only available on the E80000 series. 19. Purchase of the Inner Finisher (Y1G00A) for the LaserJet Managed E72525 MFP, E72530 MFP, E72535 MFP or Color LaserJet Managed E77822 MFP, E77825 MFP, E77830 MFP also requires purchase of 2nd Exit (Y1G23A). 20. Purchase of the Booklet Finisher (Y1G07A) or Stapler/Stacker Finisher (Y1G18A) for the LaserJet Managed E72525 MFP, E72530 MFP, or E72535 MFP also requires purchase of 2nd Exit (Y1G23A) and Spacer (Y1G24A). Purchase of the Booklet Finisher (Y1G07A) or Stapler/Stacker Finisher (Y1G18A) for the Color LaserJet Managed E77822 MFP, E77825 MFP, or E77830 MFP also requires purchase of 2nd Exit (Y1G23A). 21. Financing and service offerings available through Hewlett-Packard Financial Services Company and its subsidiaries and affiliates (collectively HPFSC) in certain countries and is subject to credit approval and execution of standard HPFSC documentation. Rates and terms are based on customer's credit rating, offering types, services and/or equipment type and options. Not all customers may qualify. Not all services or offers are available in all countries. Other restrictions may apply.

© Copyright 2016–2018 HP Development Company, L.P. The information contained herein is subject to change without notice. The only warranties for HP products and services are set forth in the express warranty statements accompanying such products and services. Nothing herein should be construed as constituting an additional warranty. HP shall not be liable for technical or editorial errors or omissions contained herein. Safari is a trademark of Apple Inc., registered in the U.S. and other countries. Android and Google Chrome are trademarks of Google Inc. Microsoft and Internet Explorer are registered trademarks of Microsoft Corporation in the United States and/or other countries. Mozilla and Firefox are registered trademarks of the Mozilla Foundation.