

MAXIMUM
PERFORMANCE
AT GREAT VALUE.



WHAT DO YOU HAVE TO SAY?



HP Color LaserJet CM6030 MFP series

The HP Color LaserJet CM6030 MFP series is a colour capable general device designed for specialised printing applications and improved output quality, ideal for performance-oriented enterprise users who want to share high quality colour printing across larger workgroups of up to 15 users.

In addition to its print, copy, scan and fax¹ capabilities, this productivity-driven workhorse is a reliable and easy-to-manage device that delivers fast print speeds at up to 30 pages-per-minute (ppm) for both colour and black-and-white.

Boost productivity with superior performance

Fast first-page-out

— first-page-out in 16 seconds for faster print and copy jobs



HP Color LaserJet
CM6030 MFP series

Print/Copy up to

30 | **30**
ppm black | ppm colour

New generation HP ColorSphere toner

— significantly improved gloss level, wider colour gamut for professional print quality and reliability, every time

ColorSphere
HP TONERS

Professional Results Every Time.



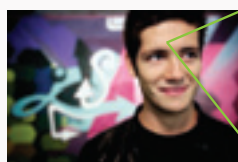
Colour matching technology

— adjust colour output to match computer screen and achieve consistent and precise print results



HP ImageREt 4800

— provide superior print quality levels that rival those of commercial presses



HP ImageREt 2400



HP ImageREt 4800



¹ Faxing is standard for HP Color LaserJet CM6030f MFP, optional for HP Color LaserJet CM6030 MFP.

² Awarded the Technological Innovation Award, 2006 Industry Analysts, Inc., Industry Analysts Technical Servicing Division.

³ Optional software sold separately.

Manage and use with total ease

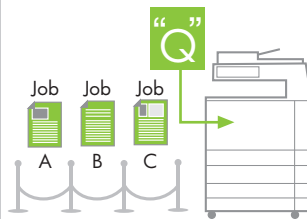
HP MFP's Easy Select touch screen control panel

— now available in Simplified Chinese, Traditional Chinese, Japanese and Korean



Job Queue Management

— easily control and coordinate all jobs for smoother workflow



Colour access control features

— manage colour usage and control colour printing costs



HEWLETT-PACKARD COMPANY

Outstanding Achievement for the Color Control Capabilities of its Printers and MFPs, Fall 2007

Awarded by Buyers Laboratory (BLI) for the extensive colour control features included with HP's laser printers and multifunction products.

HP Universal Print Driver

— industry's first² intelligent driver



Designed for improved workflows and productivity

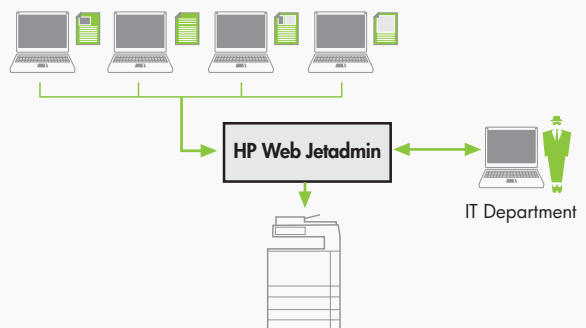
Scan-to features — capture documents electronically with scan-to email, printer, network folder, and fax services¹, without the use of a PC and speed up workflow.



Enhanced security features — protect confidential and business-critical data

- HP Digital Sending Software³
- Secure overwrite of data
- Private printing

HP Web Jetadmin — provide full connectivity and management of a fleet of laser MFPs in your environment from a standard web browser



Manage and use with total ease

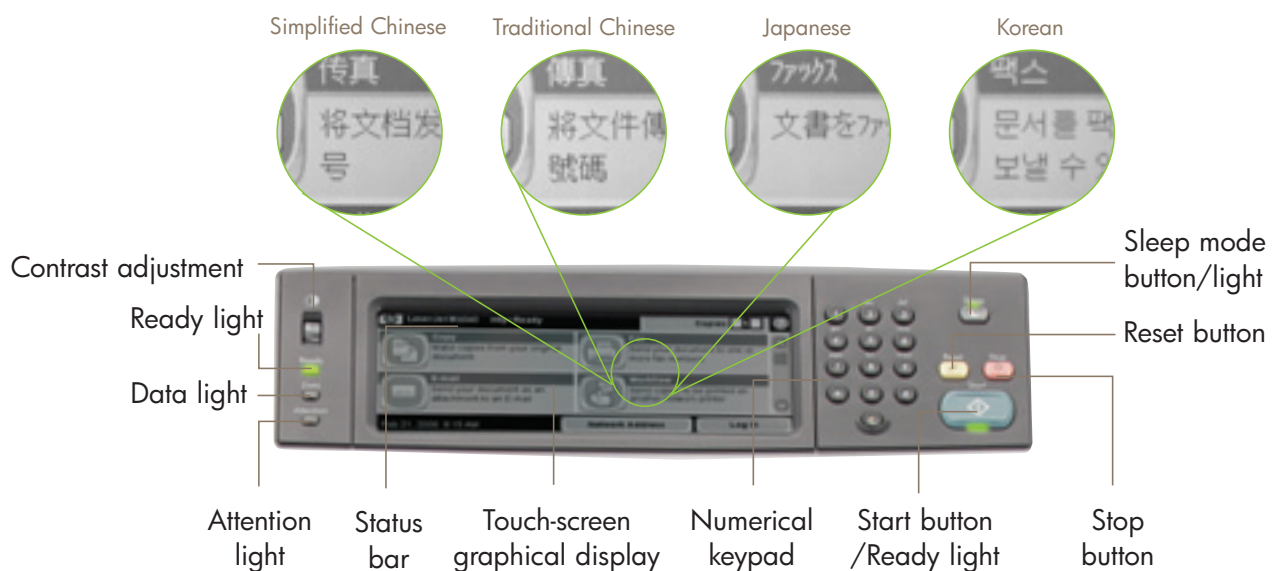
The HP Color LaserJet CM6030 MFP series offers outstanding usability and productivity, providing the best user experience through simplified device management and better control over a fleet of HP LaserJet MFPs.

Award-winning¹ HP Easy Select Control Panel

Easy to navigate and troubleshoot, the intuitive and familiar interface of the HP Easy Select Control Panel offers a consistent user experience. Available on HP's entire LaserJet MFP line, it highlights all available applications, allows simple navigation with familiar icons, and provides additional controls for faxing², scanning, digital sending, and colour printing. Now available in a variety of localised languages.

Added flexibility with Input Method Editor (IME)

Improve productivity and consistency across the HP LaserJet MFP fleet by allowing the user to easily work in their native language. The Input Method Editor (IME) provides Asian language input at the control panel (Simplified Chinese, Traditional Chinese, Japanese, Korean), with more optional languages available.



Simplify print coordination with Job Queue Management

Effortlessly manage and control print, copy, and incoming/outgoing fax² jobs with Job Queue Management. Through the job queue at the control panel, users can review and handle scheduled, active and completed jobs with ease.

- View the status of each active job in the system (print, copy, and incoming fax² jobs only)
- Check details about all scheduled, active, or completed jobs in the system

- Cancel, pause, or resume a scheduled or active job at the device through authentication methods
- Reprioritise a scheduled job
- Print the completed job log (shows the last 32 print, copy, and incoming jobs)
- Cancel current or all outgoing faxes²

¹ Buyer's Lab gave HP a "Pick of the Year" award in December 2006 for "Outstanding Achievement for the User Interface Design of its Multifunction Printers."

² Faxing is standard for HP Color LaserJet CM6030f MFP, optional for HP Color LaserJet CM6030 MFP.

Boost productivity with superior performance and get professional results fast

The HP Color LaserJet CM6030 MFP series is ideal for workgroups who want to print colour and black-and-white documents with fast first-page-out performance and optimised print quality.



Exceptional print speed saves valuable time

Print professional colour as fast as black-and-white without compromising print quality. Get up to 30 ppm for a typical office document with HP's fast print speeds, and fast first-page-out in 16 seconds (colour and black-and-white).

Up to 30 ppm
Colour/Black-and-white



Built to deliver results

Process complex documents quickly without impacting performance with 835 MHz processor and 512 MB RAM standard memory (expandable up to 768 MB max.).

Powerful performance for better results

Create high-impact documents in-house

HP ImageREt technology of up to 4800 dpi consistently ensures high quality, professional results through advanced image enhancements.

Outstanding results for complex print jobs

Delivering at up to 600 x 600 dpi (default), and up to 1200 x 600 dpi operating mode with HP ColorSphere toner formulation results in exceptional edge definition for detailed line work, high-gloss posters, complex spreadsheets, and architectural drawings.



835 MHz
processor memory

512 MB RAM
standard memory

Sharp details and vibrant colours





Achieve professional quality business documents

Create brilliant, professional high quality results with the new generation HP ColorSphere toner. With its advanced formulation, uniform size and spherical shape, this toner delivers:

Exceptional print quality

- A wide range of colours and high gloss result in brilliant, realistic photos and images. Dynamic colour gamut shows subtle flesh tones, shadow detail and smooth gradations, and high gloss contributes to colour consistency and intensity on a range of papers.

Consistency and reliability

- Uniformly-sized toner particles incorporate patented additives to maintain a consistent charge to ensure accurate and consistent results page to page and cartridge to cartridge

Fast printing

- Each toner particle contains a wax core designed to fuse to the paper at full MFP speeds. The results — fast printing without sacrificing output quality.

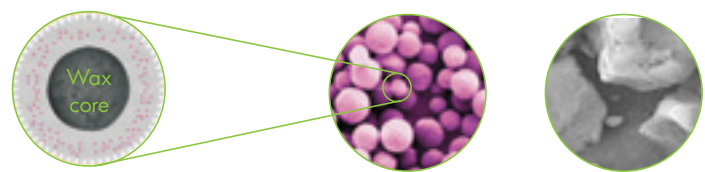
Reliable, intelligent HP Smart printing technology

With an integrated Smart chip, Original HP print cartridges enable interactive communication between the cartridge and printer to ensure optimised print quality while keeping the management of printing supplies easy and hassle-free.

Handle heavy network and print loads easily

The HP Jetdirect Gigabit Ethernet embedded print server is designed to manage complex print jobs so that big jobs print faster and print queues are shorter. In addition, it supports both IPv4 and IPv6 protocols, so that you can upgrade with confidence.

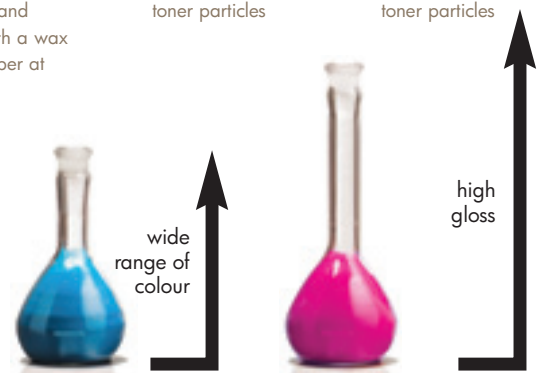
Consistent, outstanding print quality



Chemically-grown toner particles are consistent in size and spherically-shaped with a wax core to fuse to the paper at MFP's print speed.

Spherically-shaped toner particles

Conventional toner particles



ColorSphere
HP TONERS

Professional Results Every Time.

Save time with hassle-free supplies management



Manage complex print jobs with HP Jetdirect





Manage colour usage and printing costs

With colour access control features, businesses can manage colour toner usage, control costs, and make informed decisions that improve operational efficiency.

- **Assign colour access to specific users or workgroups** — using the HP Universal Print Driver or HP Web Jetadmin's fleet configuration capability
- **Assign colour access by application** — allow designation of certain applications to be printed in colour and others in black-and-white
- **Track colour use by job, by user, and by device** — generate real-time and periodic usage reports. Plus, it allows you to easily allocate costs to individual departments¹.
- **Auto colour sensing** — perform an automatic analysis of each scanned page in order to accurately detect and monitor click charges

Clear up paper jams quickly and effortlessly

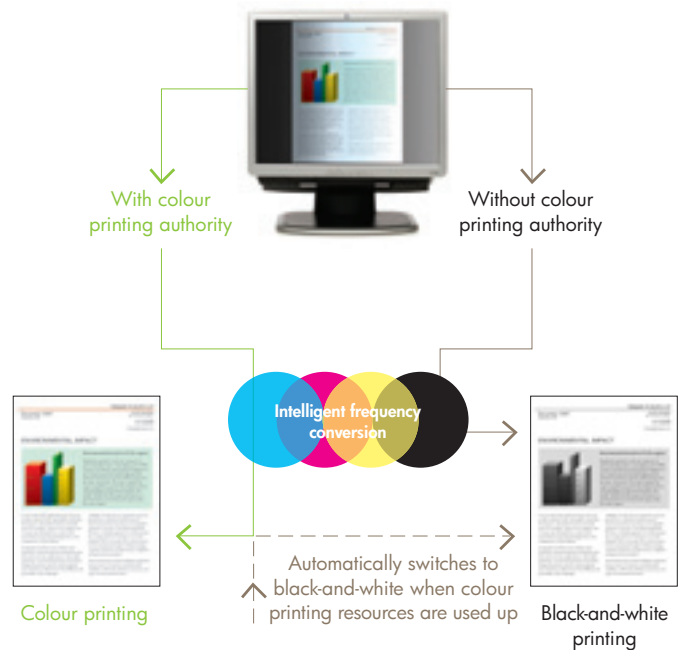
HP's Automatic Navigation technology offers step-by-step animated and written guidance on the control panel to swiftly locate and rectify paper jams, saving valuable time, and providing an enhanced user experience.

Quick and simple installations

With Send-to-Network folder and Send-to-Email installation wizards, it is easy to get started on streamlining business communications.

Save time with simplified replacement parts management

HP signature Blue tabs ensure replacement parts are easily identifiable. For added convenience, fusers, transfer kits and transfer rolls are easily replaceable as are toner cartridges and image drums.

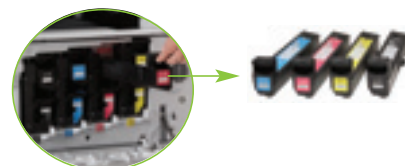


HEWLETT-PACKARD COMPANY

Outstanding Achievement for the Color Control Capabilities of its Printers and MFPs, Fall 2007

Awarded by Buyers Laboratory (BLI) for the extensive colour control features included with HP's laser printers and multifunction products.

More convenient and easy to manage replacement parts



¹ Billing solutions are an optional feature available at an additional cost through HP's solution partners.

Business document creation solution

The HP Color LaserJet CM6030 MFP series enables organisations to print, fax¹, scan, make copies, or add document finishing accessories for stapled, sorted reports or marketing collateral easily. Create professional-looking prints in-house while saving the time and cost spent outsourcing print jobs.



A simple, effective document creation solution

Flexible paper handling

Create more complex, finished documents in-house, saving the time and expense of an outside service. The HP booklet maker/finisher accessory staples and folds up to 15 pages into a booklet and stacks up to 2,000 sheets of paper, 30 stapled jobs, or 25 saddle-stitched booklets (number of booklets varies with page amounts and weight of booklet). Create professional-looking programs for company events or product catalogues with covers of glossy, heavyweight paper, white paper for the inside pages, and a saddle-stitched binding — all without any intervention on your part.

Versatile paper handling functionalities support heavy media up to 220 g/m², while Trays 1, 3, 4, and 5 are fully adjustable for media sizes up to 305 x 457 mm, providing exceptional flexibility.

Reduce user intervention with a 100-sheet multipurpose tray and four 500-sheet trays for a total capacity of 2,100 sheets². In addition, built-in two-sided printing and label support from all trays, together with the option to load paper in volume or use each tray for a different paper type offer further convenience.

Reduce footprint with the rotate offset function.

The rotate offset capability³ of the HP Color LaserJet CM6030 MFP allows users to alternate output orientation by job on the MFP itself rather than with a paper finisher, resulting in a smaller footprint, and a more efficient use of computing resources.

Print a wide variety of media with support for varied paper types, transparencies, labels, envelopes, and card stock.

Effortless copying and scanning

Easy control over results. Adjust all copy settings at the control panel and printed documents that are automatically sorted with default copy collation.

50-sheet Automatic Document Feeder (ADF) allows unattended copying and scanning, or use the flatbed scanner for irregular-size single sheets, bound documents, and objects up to 11 x 17 inches.

Scan directly to networked location using the control panel or the Embedded Web Server. Scans can be routed to preconfigured destination, such as a PC desktop, PC folder, network folder, or a TWAIN/WIA compliant application.

¹ Faxing is standard for HP Color LaserJet CM6030f MFP, optional for HP Color LaserJet CM6030 MFP.

² Available for HP Color LaserJet CM6030f MFP only.

³ Rotate Offset provides the capacity to provide alternate output orientation by job on the base device (available through a firmware upgrade shortly after launch).

Designed for improved workflows and productivity

The HP Color LaserJet CM6030 MFP series supports enterprises with workflow and security solutions by digitising, securing and streamlining their paper-intensive processes to facilitate smoother document workflow, greater efficiency, and accelerate business results.

Enhance security with user authenticated printing



Work confidently with advanced security capabilities

HP Digital Sending Software (DSS)¹ — Authenticate users at device level and send documents to email, network folders, FTP, LAN-fax, printer or document OCR. Quick and secure way to electronically capture, retrieve and share content.

Secure overwrite of data — Built-in security capabilities safely erase job files and histories from the hard disk.

Private printing — Four standard and one optional job retention features enable private printing:

- **Proof and hold** — Quick and easy way to print one copy and proof it before printing the remaining copies
- **Personal Job** — Protect confidential documents. Job will not be printed until released with a 4-digit Personal Identification Number (PIN)
- **Quick Copy** — Print requested number of copies of a job and store a copy on the laser MFP's hard disk for future printing
- **Stored Job** — Allow download of a print job to the laser MFP's hard disk to be printed when required
- **Pull Printing** — Save documents electronically in the device, or on a server, until authorised user is ready to retrieve and print

Enhance organisational productivity and performance

HP Digital Sending Software¹ — Streamline document workflow by incorporating paper documents into business processes to improve efficiency and productivity. Digital information can be sent quickly and securely to email, network folders and other laser MFPs, reducing the costs of physically sharing and storing information.

MegaTrack In Printer Agent (MIPA)¹ — Track and record printing, copying, faxing and scan-to email activities on the device. With real-time insights on how devices are being used, organisations can manage devices and costs effectively.

EasyReport¹ — Receive real-time information on device usage, allowing administrators to track, manage and control the organisation's output environment and related costs more effectively. Reports can help organisations optimise their output environment through informed decision-making.

Streamline device and network management

HP Web Jetadmin — Provide a web-based platform that centralises device management, asset management, driver and queue management, security and cost controls, and help desk support. It also enables IT support to remotely configure and troubleshoot devices across the network.

HP Universal Print Driver — Deploy enterprise-wide features and control such as duplex printing and print quality settings with the use of a unified and intelligent full-featured driver that provides the same look and feel across all devices so that users can enjoy a familiar experience across all devices.

Streamline office workflow with digital sending features



¹ Optional software sold separately.

HP's commitment for a safer environment

With HP's Design for the Environment initiative, products are designed with their entire life cycle in mind — from product design to manufacturing, and from usage to recycling — in an effort to reduce energy, paper, packaging and materials used, as well as to lower running and wastage costs for users. By providing customers with safe, high quality products that are environmentally-sound throughout their life cycle, HP aims to reduce the environmental impact of our products, and that of our customers.

1 DESIGN FOR ENVIRONMENT

Save power automatically. Using HP Web Jetadmin, you can remotely schedule sleep and wake-up modes or automatically turn off devices on nights and weekends for savings of up to 66 percent in energy costs.

Globally proven energy efficiency. As an ENERGY STAR® partner, HP Color LaserJet CM6030 MFP series meets ENERGY STAR® guidelines for energy efficiency.

Get added value with an environmentally conscious HP LaserJet MFP. The HP Color LaserJet CM6030 MFP series has met stringent requirements to reduce energy consumption, noise levels, and chemical emissions.

2 MANUFACTURING

Use of fewer materials. HP LaserJet toner cartridge packaging uses 45 percent less packaging material (by weight) than previous designs. The more compact package also contains an innovative multi-chamber air bag that protects the cartridge from transport damage, dust, moisture and light. 30 percent more cartridges can be shipped on one pallet (1500 more cartridges can be shipped in one ocean container).

5 RECYCLE

Less waste through recycling. All returned Original HP print cartridges go through a multiphase recycling process where they are reduced to raw materials that are used to make new metal and plastic products.



4 RETURN

Simplify the management and disposal of products. HP Planet Partners¹ — a free, convenient return and recycling programme available in more than 40 countries.

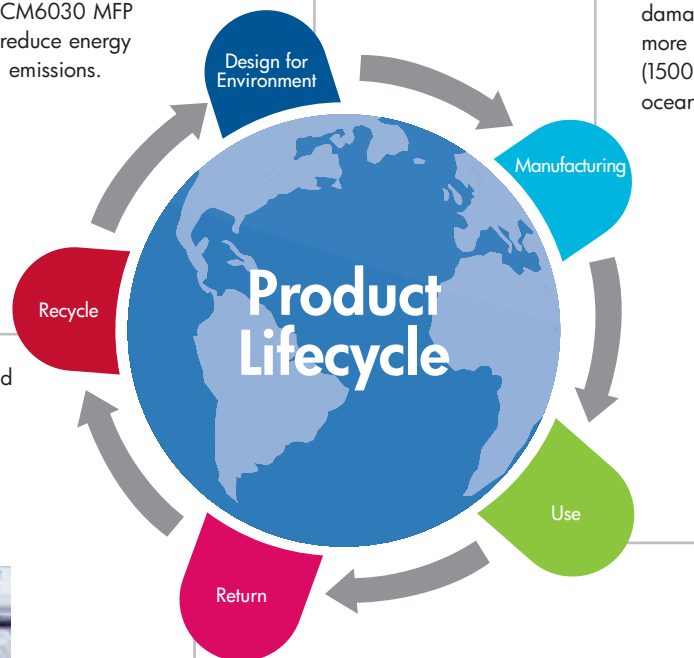
3 USE



Consume less paper by printing on both sides. HP Web Jetadmin and the HP Universal Print Driver make it easy to set automatic duplex printing for the individual printer or an entire fleet, allowing you to reduce the cost and volume of paper used.

Capture and send documents electronically. HP can help automate workflows and help change the way you do business. With the ability to capture and deliver documents digitally, you can speed document-based workflows, virtually eliminate the need for faxing, and lower the amount of paper your organisation uses.

Less extra pages printed. HP Smart Web Printing improves printing from Web pages. Eliminate extra pages and right-edge clipping and enjoy the ability to combine content and print exactly what you want, without wasting resources.



¹ Programme availability varies. HP printing supplies return and recycling is currently available in more than 40 countries, territories and regions in Asia, Europe, and North and South America.

HP award-winning service and support

Efficient, flexible and cost-effective — HP offers you a broad spectrum of extensive Print Services that range from vital hardware repair support and the management of print environments, to a comprehensive, scalable portfolio of customisable service components with end-to-end capabilities that can meet ever-changing business needs.

For more information, visit www.hp.com/apac/enterpriseprint/services



Support Services



What:

Choice of high quality support services, delivered by HP for a worry-free printing experience

When you need:

Reduced device repair costs and maximised printing uptime across branch and remote office locations

It includes:

- Choice of same day or next day on-site services
- Expert technical phone support
- HP original parts, materials and labour

Smart Print Services



What:

An affordable usage-based contract ensuring continuous printing and productivity

When you need:

Peace of mind with low total cost of ownership

It includes:

- Choices from a comprehensive fleet of single function and multifunction printers
- Hardware maintenance
- Supplies replenishment
- Device monitoring and usage visibility
- Priority phone support

Managed Print Services



What:

Comprehensive and sustainable portfolio of services customised to meet your document capture and output strategies

When you need:

Focus on your core business while having control of your imaging and printing network infrastructure

It includes:

- Assessment Services
- Financial and Procurement Services
- Transition and Implementation Services
- Management and Support Services
- Document and Workflow Services

HP Color LaserJet CM6030 MFP series



Front view

Partial rear view I/O panel

- | | | |
|---|--|---|
| <p>1 Four-line Easy Select control panel (including touch-screen graphical display)</p> <p>2 500-sheet face-down output bin with long paper extension</p> <p>3 Front-door access to the four easy-to-install Original HP LaserJet print cartridges with HP ColorSphere toner</p> <p>4 Built-in automatic two-sided printing</p> | <p>5 Four 500-sheet input trays for 2,100-sheet input capacity</p> <p>6 50-sheet Automatic Document Feeder</p> <p>7 100-sheet multipurpose tray 1</p> <p>8 HP high performance 80 GB hard disk for job storage</p> <p>9 A powerful 835 MHz processor and 512 MB memory, upgradeable to 768 MB</p> | <p>10 Access port for Kensington lock</p> <p>11 Foreign interface harness</p> <p>12 Fax connection</p> <p>13 One EIO expansion slot</p> <p>14 Hi-Speed USB 2.0 device port</p> <p>15 HP Jetdirect Gigabit Ethernet embedded print server for easy network sharing</p> |
|---|--|---|

Series at a glance

	HP Color LaserJet CM6030 MFP	HP Color LaserJet CM6030f MFP
Part number	CE664A	CE665A
Embedded Gigabit networking	✓	✓
Automatic two-sided printing	✓	✓
50-sheet ADF, 100-sheet multipurpose tray 1, 500-sheet tray 2	✓	✓
500-sheet tray and cabinet	✓	Not available
Three 500-sheet trays	Not available	✓
Fax capability	Optional	✓
HP 3-bin stapler/stacker	Optional	Optional
HP booklet maker/finisher	Optional	Optional

Maximise the performance of your investment with HP accessories



HP 3-bin stapler/stacker with output accessory bridge (CC517A)

Enjoy hassle-free, unattended printing, including automatic offset, multi-position stapling, and a three-bin mailbox.



HP booklet maker/finisher with output accessory bridge (CC516A)

Create complex documents with three bins, automatic offset, inline stapling and stacking, and booklet making with saddle-stitching and v-folding.



HP LaserJet MFP Analog Fax Accessory 300 (Q3701A)

Quickly and reliably send and receive faxes¹.

¹ Faxing is standard for HP Color LaserJet CM6030f MFP, optional for HP Color LaserJet CM6030 MFP.

HP Color LaserJet CM6030 MFP series

Technical specifications



HP Color LaserJet CM6030 MFP



HP Color LaserJet CM6030f MFP

Print and copy speed	Colour and black-and-white: Up to 30 ppm (up to 31 ppm, A4)	
First-page-out	As fast as 16 seconds from Ready mode	
Resolution	Up to 1200 x 600 dpi (best), Up to 600 x 600 dpi (default); HP ImageREt 4800 technology	
Features	<p>Copying Colour copying, up to 999 multiple copies, reduce/enlarge from 25 – 200%, two-sided copying, collation, contrast adjustments, image adjustment, content orientation, N-up, background removal, job storage, output bin selection, edge-to-edge printing, job build</p> <p>Scanning Colour flatbed scanner (up to 297 x 432 mm [11.7 x 17 inches]) and ADF; scan input modes: front-panel scan, copy, fax (optional), email; file types: PDF, JPG, TIFF, MTIFF</p> <p>Faxing Optional (with the separate purchase of the HP LaserJet MFP Analog Fax Accessory 300) Up to 33.6 kbps, fax forwarding, fax polling (receive only), broadcasting (up to 100 locations), speed dial (up to 100 lists), junk barrier, auto redialing, auto fax reduction, Windows faxing supported, up to 60,000 pages fax memory (depending on the free storage on the hard drive)</p> <p>Digital sending (standard) Black-and-white and colour scan, scan to folder (includes shared address book for fax), scan direct to email server, send to email, analog fax, LDAP email addressing; authentication includes Windows Negotiated (Kerberos and NTLM), group 1 and group 2 PIN authentication, LDAP authentication, and authentication manager</p> <p>Digital sending (optional) Optional digital sending software includes additional functionality including integrated LAN and Internet fax, address book manager, email addressing (includes LDAP addressing and replication, personal address book, and local address book), workflow applications including send to printer and OCR scanning. Send to workflow includes send to printer, send to FTP, and send to folder. A trial version of HP Digital Sending Software is included with the device but must be installed separately.</p>	
Processor/memory	835 MHz; 512 MB, upgradeable to 768 MB via one DDR SODIMM slot	
Durability ratings	Recommended monthly volume: 5,000 to 10,000 ¹ ; Duty cycle: Up to 200,000 pages ²	
Paper handling	<p>Input 50-sheet ADF, 100-sheet multipurpose tray 1, 500-sheet trays 2 and 3</p> <p>Output 500-sheet output bin; optional finishers: HP 3-bin stapler/stacker or HP booklet maker/finisher</p> <p>Two-sided printing Automatic</p> <p>Sizes 50-sheet automatic document feeder (ADF): A3, A4, B4, B6, letter, legal, 11 x 17; Multipurpose tray 1: A3, A4, A4-R, A5, A6, RA3, SRA3, B4 (JIS), B5 (JIS), B6 (JIS), executive (JIS), 8 K, 16 K, D postcard, envelopes (#9, #10, Monarch, B5, C5, C6, DL); letter, letter-R, legal, executive, statement, 8.5 x 13, 12 x 18, index cards (4 x 6, 5 x 8); custom sizes: 99 x 140 mm (4 x 5.5 inches) to 320 x 457 mm (12.6 x 18 inches); Input tray 2: A3, A4, A4-R, A5, B4 (JIS), B5 (JIS), executive (JIS), 8 K, 16 K; letter, letter-R, legal, executive, 8.5 x 13, 11 x 17; custom sizes: 148 x 210 mm (5.8 x 8.2 inches) to 297 x 432 mm (11.7 x 17 inches); Input trays 3, 4, and 5: A3, A4, A4-R, A5, RA3, SRA3, B4 (JIS), B5 (JIS), executive (JIS), 8 K, 16 K; letter, letter-R, legal, executive, 8.5 x 13, 11 x 17, 12 x 18; custom sizes: 148 x 210 mm (5.8 x 8.2 inches) to 320 x 457 mm (12.6 x 18 inches); Duplex: A3, A4, A4-R, RA3, SRA3, B4 (JIS), B5 (JIS), executive (JIS), 8 K, 16 K; letter, letter-R, legal, executive, 8.5 x 13, 11 x 17, 12 x 18</p> <p>Weights All trays: 60 – 220 g/m² (16 to 58 lb bond)</p> <p>Types Paper (bond, recycled, glossy, mid-weight, heavy, heavy glossy, extra heavy, extra heavy glossy), transparencies, labels, envelopes, cardstock, tough paper, rough paper, user-defined</p>	
Connectivity	<p>Interfaces Hi-Speed USB 2.0 device port, one EIO slot, fax port, FIH port, PCI express</p> <p>Languages and fonts HP PCL 5, HP PCL 6, HP postscript level 2 emulation (default) (HP postscript level 3 emulation supported); 80 HP font set (plus Greek, Hebrew, Cyrillic, Arabic)</p> <p>Client operating systems Microsoft® Windows® 2000, XP®, Server 2003, Vista®, Macintosh OS X v10.2.8 or later</p> <p>Network operating systems Microsoft® Windows® 2000, Server 2003, XP®, Vista®, 2003 64-bit, XP® 64-bit, Vista® 64-bit (IPv6 compatible with Windows® 2003, XP®, and Vista®); Novell 5.1 and later; Mac OS X v10.2, v10.3, v10.4 and later; Red Hat Linux 7.x and later; SuSE Linux 8.x and later; HP-UX 10.20, 11.x, 11.i; Solaris 2.5 and later (SPARC systems only); IBM AIX 3.2.5 and later 1; MPE-iX; Citrix MetaFrame Server; Windows Terminal Services</p> <p>Network protocols IPv4/IPv6: Apple Bonjour compatible (Mac OS 10.2.4 and later), SNMPv1/v2c/v3, HTTP, HTTPS, FTP, Port 9100, LPD, IPP, Secure-IPP, WS Discovery, IPsec/Firewall; IPv6: DHCPv6, MLDv1, ICMPv6; IPv4: Auto-IP, SLP, TFTP, Telnet, IGMPv2, BOOTP/DHCP, WINS, IP Direct Mode, WS Print; Other: IPX/SPX, AppleTalk, NetWare NDS, Bindery, NDP5, iPrint</p> <p>Security SNMP v3, SSL/TLS (HTTPS), 802.1x authentication (EAP-PEAP, EAP-TLS)</p>	
Minimum system requirements	40 MB of free space running Windows® 2000 or greater; Macintosh OS X v10.2.8 and later with 80 MB of hard disk space	
Dimensions (w x d x h)	704 x 673 x 988 mm (27.7 x 26.5 x 47.9 inches) (without finisher)	
Weight	139.87 kg (308.4 lb)	144.91 kg (319.5 lb)
What's in the box	MFP, preinstalled full-capacity black, cyan, magenta and yellow HP Color LaserJet toner cartridges with HP ColorSphere toner ³ ; preinstalled black, cyan, yellow and magenta image drums ³ ; Getting Started Guide, Wall Poster, Telephone Support Flyer; software drivers and documentation on CD-ROM; control panel overlays, HP Digital Sending Software Trial Version CD, power cables, HP embedded hard disk, 100-sheet multipurpose tray, 500-sheet input tray 2	
Also includes	One 500-sheet input tray	Three 500-sheet input trays, HP LaserJet MFP Analog Fax Accessory 300
Warranty	One-year, next-business-day, onsite limited warranty	

¹ HP recommends that the number of printed pages per month be within the stated range for optimum device performance, based on factors including supplies replacement intervals and device life over an extended warranty period.

² Duty cycle is defined as the maximum number of pages per month of imaged output. This value provides a comparison of product robustness in relation to other HP LaserJet or HP Color LaserJet devices, and enables appropriate deployment of printers and MFPs.

³ Average continuous composite black cartridge yield 19,500 standard pages. Average continuous composite cyan/yellow/magenta cartridge yield 21,000 standard pages. Declared yield values in accordance with ISO/IEC 19798. Actual yields vary considerably based on images printed and other factors. For more information, visit www.hp.com/go/learnaboutsupplies.

⁴ Declared yield 35,000 pages based on HP testing methodology. Actual yields may vary considerably.

Environmental ranges

Recommended temperature	15 – 27° C (63 – 77° F)
Storage temperature	0 – 35° C (32 – 95° F)
Recommended relative humidity	30 – 70%
Storage relative humidity	35 – 85%
Altitude, operating	0 – 3,048 m (0 – 10,000 ft)

Acoustics¹

Sound power	Active, printing: 6.8 B(A), copy/scan: 7.3 B(A); Ready: 4.3 B(A)
Bystander sound pressure	Active, printing: 56.8 dB(A), copy/scan: 57.1 dB(A); Ready: 40.3 dB(A)

Power specifications

Power requirements	110 – 127 V (±10%), 60 Hz (±2 Hz), 10.5 amps				
	220 – 240 V (±10%), 50 Hz (±2 Hz), 5.5 amps				
Power consumption ²	Active, printing	Active, copy/scan	Ready	Sleep	Off
	1,026 watts	1,070 watts	214 watts	193 watts, Sleep 1	0.24 watts
				23 watts, Sleep 2	
	Typical Electricity Consumption (TEC): 12.505 kWhr/Week				

Certifications

Safety	IEC 60950-1 (International), EN 60950-1+A11 (EU), IEC 60825-1+A1+A2, UL/cUL Listed (US/Canada), GS license (Europe), EN 60825-1+A1+A2 Class 1, 21 CFR Ch. 1/SubCh. J and Laser Notice#50 (July 26th 2001) (Class 1 Laser/LED Device) GB4943-2001, Low Voltage Directive 2006/95/EC with CE Marking (Europe), other safety approvals as required by individual countries
EMC	CISPR 22: 2005/EN 55022: 2006 Class B, EN 61000-3-2: 2000 +A2, EN 61000-3-3: 1995+A1, EN55024: 1998+A1 +A2, FCC Title 47 CFR, Part 15 Class B (USA), ICES-003, Issue 4, (Canada), GB9254-1998, EMC Directive 2004/108/EC with CE Marking (Europe), other EMC approvals as required by individual countries
Telecom	ES 203 021, R&TTE Directive 1999/5/EC (Annex II) with CE Marking (Europe), FCC Part 68, Industry Canada CS03, NOM-151-SCT-1999 (Mexico), PTC-200 (New Zealand), AS/ACIF S002: 2001 (Australia), IDA PSTN1 (Singapore), TPS002:01 (Malaysia), IG 0005-11 (Taiwan), HKTA 2011 (Hong Kong SAR), YD514, YD/T589, YD703, GB3382 (China), other Telecom approvals as required by individual countries

¹ Declared per ISO 9296. Values subject to change. See www.hp.com/go/dj/CM6030_firmware for current information. Configurations tested (3 units on 8/15/07) included colour and black-and-white printing, simplex and duplex printing, and 110 and 220 Vac units at 30 ppm.

² Values subject to change. See www.hp.com/support/dj/CM6030 for current information. Power reported is highest values measured for colour and black-and-white printing/copying using all standard voltages. 110 Vac unit tested. Data from colour simplex printing and copying.

³ Average continuous composite black cartridge yield 19,500 standard pages. Average continuous composite cyan/yellow/magenta cartridge yield 21,000 standard pages. Declared yield values in accordance with ISO/IEC 19798. Actual yields vary considerably based on images printed and other factors. For more information, visit www.hp.com/go/learnaboutsupplies.

⁴ Declared yield 35,000 pages based on HP testing methodology. Actual yields may vary considerably.

⁵ To order the Security Lock Adapter Kit, visit www.hp.com/go/hpparts

For more information, call your local Hewlett-Packard authorised dealer or visit us at www.hp.com/apac/enterpriseprint

HP Customer Information Centre (for product information)

Australia	13 23 47
China	800 820 2255
Hong Kong	800 938 833
India	1600 425 4999 (from MTNL/BSNL LAN line) 3030 4499 (from mobile)
Indonesia	0800 1111 222
Korea	080 703 0700
Malaysia	1800 88 4848
New Zealand	0800 733 547
Philippines	1800 1441 6688
Singapore	1800 278 8100
Taiwan	0800 236 686
Thailand	+662 353 9000
Vietnam	+848 930 2814
Bangladesh, Bhutan, Brunei, Cambodia, Maldives, Nepal, Pakistan, Sri Lanka:	Fax +65 6275 6707

HP Customer Care Centre (for post-sales service)

Australia	13 10 47
China	800 810 3888
Hong Kong	+852 3002 8555
India	1600 112 267
Indonesia	+62 21 350 3408
Korea	+82 23270 0700
Malaysia	1800 805 405
New Zealand	0800 449 553
Philippines	+63 2 867 3551
Singapore	+65 6 272 5300
Taiwan	+886 2 8722 8000
Thailand	+662 353 9000
Vietnam	+848 823 4530

Microsoft, Windows, and Windows XP are U.S. registered trademarks of Microsoft Corporation. Windows Vista is either a registered trademark or trademark of Microsoft Corporation in the United States and/or other countries.

© Copyright 2008 Hewlett-Packard Development Company, L.P. The information contained herein is subject to change without notice. The only warranties for HP products and services are set forth in the express warranty statements accompanying such products and services. Nothing herein should be construed as constituting an additional warranty. HP shall not be liable for technical or editorial errors or omissions contained herein.

Printed in Singapore, 20080094-EEP-REV1, June 2008



Ordering information

Number	Description
CE664A	HP Color LaserJet CM6030 MFP
CE665A	HP Color LaserJet CM6030F MFP
Print cartridges with HP ColorSphere toner	
CB390A	HP Color LaserJet Black Print Cartridge (19,500 pages) ³
CB381A	HP Color LaserJet Cyan Print Cartridge (21,000 pages) ³
CB382A	HP Color LaserJet Yellow Print Cartridge (21,000 pages) ³
CB383A	HP Color LaserJet Magenta Print Cartridge (21,000 pages) ³

Supplies

CB384A	HP Color LaserJet Black Image Drum (35,000 pages) ⁴
CB385A	HP Color LaserJet Cyan Image Drum (35,000 pages) ⁴
CB386A	HP Color LaserJet Yellow Image Drum (35,000 pages) ⁴
CB387A	HP Color LaserJet Magenta Image Drum (35,000 pages) ⁴
CB457A	HP Color LaserJet 110 volt fuser kit
CB458A	HP Color LaserJet 220 volt fuser kit
CB459A	HP Color LaserJet roller kit
CB463A	HP Color LaserJet transfer kit
CE487A	HP ADF Roller Kit
C8091A	Staple Refill for the stapler/stacker
CC383A	Staple Refill for the booklet maker/finisher

Paper handling

CC517A	HP 3-bin stapler/stacker with output accessory bridge
CC516A	HP booklet maker/finisher with output accessory bridge
Q3701A	HP LaserJet MFP Analog Fax Accessory 300

Media

Asia Pacific: www.hp.com/apac/printingsupplies

Asia: 65-6253-8500

Australia/New Zealand: 61-2997-2299LAR

Connectivity accessories

J7997G	HP Jetdirect 630n EIO Print Server
J7961G	HP Jetdirect 635n EIO Print Server
J8007G	HP Jetdirect 690n EIO 802.11g Wireless Print Server
J7988G	HP Jetdirect en1700 IPv4/IPv6 Print Server
J7942G	HP Jetdirect en3700 Fast Ethernet Print Server
J7951G	HP Jetdirect ew2400 802.11g Wireless Print Server
J7972G	HP EIO 1284B Adapter
Q3931-67925	Security Lock Adapter Kit ⁵

Memory and storage

Q7557A	HP 128 MB, 200-pin DDR DIMM
Q7558A	HP 256 MB, 200-pin DDR DIMM
J7989G	HP High Performance EIO Hard Disk

Care pack

UJ165E	HP 3-year, Next Business Day, Onsite Service
UJ166E	HP 4-year, Next Business Day, Onsite Service
UJ167E	HP 5-year, Next Business Day, Onsite Service
UJ168E	HP 3-year, 4-hour, 9 x 5 Same Day, Onsite Service
UJ170E	HP 4-year, 4-hour, 9 x 5 Same Day, Onsite Service
UJ172E	HP 5-year, 4-hour, 9 x 5 Same Day, Onsite Service
UJ174PE	HP 1-year, Post-warranty, Next Business Day, Onsite Service
UJ175PE	HP 1-year, Post-warranty, 4-hour, 9 x 5 Same Day, Onsite Service
U2014E	HP Onsite Installation and Network Configuration
U9877E	HP Maintenance Kit Replacement Service, Fuser

Third-party solutions

www.hp.com/go/gsc

For more information on

HP Care Pack, visit: <http://www.hp.com/apac/hpservices/carepack>

HP Instant Support Professional Edition (ISPE), visit:

<http://instantsupport.asiapac.hp.com>

For more information on support, visit: <http://www.hp.com/support>

For more information on HP genuine parts, visit: <http://www.hp.com/go/hpparts>

For specific warranty details, please check with your local country resellers.

