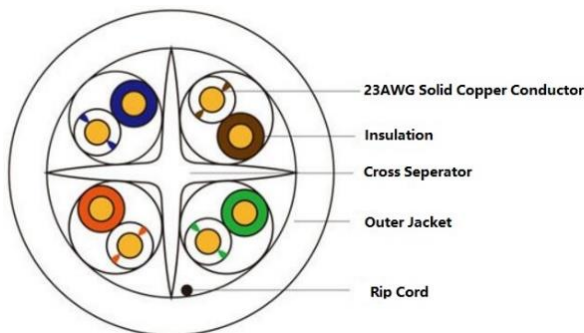
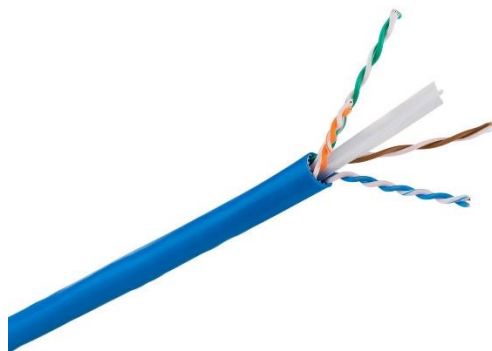


## CAT.6A U/UTP CABLE - CC6AUBLL3



Browse on Mobile

 Browse on Web

NEXCONEC<sup>®</sup> Category 6A U/UTP cables are specifically designed to deliver robust standards based performance ensuring optimum bandwidth for today's high speed network applications. The cable is designed to support horizontal networking applications over distances up to 100 meters.

Each Category 6A U/UTP exceed the minimum specified performance for Category 6A U/UTP cables and support all CLASS EA applications.

### FEATURES

- ✓ Conform to IEC, EIA-TIA performance requirements
- ✓ 23AWG premium grade copper conductor
- ✓ U/UTP cable structure with cross separator inside for better cable performance
- ✓ Cable jacket available in LSZH, CM, PVC
- ✓ ETL certified Channel test

### APPLICATIONS

- ✓ Supports category 6A (Class EA) networks running up to 500MHz applications
- ✓ Horizontal and backbone in structured cabling installations

## SPECIFICATIONS

Parameters	Value
Electrical Performance	Certified performance in a 4-connector configuration up to 100 meters
Conductor/Insulator	23 AWG solid copper insulated with HPDE
Operating Temperature	-20°C / +75°C
Compliance	ANSI/TIA-568-C.2, ISO 11801, IEC 60603-7, ETL Verified
RoHS Compliance	Compliant

## CABLE SPECIFICATION (CONSTRUCTION)

Parameters	Units	Value
Cable OD	mm	6.9mm±0.2mm
Shielding		None
Insulation		HDPE
Pair Color Codes		Pair 1: White/Blue, and Blue Pair 2: White/Orange, and Orange Pair 3: White/Green, and Green Pair 4: White/Brown, and Brown
Sheath Color		Blue (RAL 5012) Grey (RAL 7046) Black (RAL 9005)
Conductor		23AWG solid copper

**CABLE SPECIFICATION (MECHANICAL)**

Parameters	Value
<b>Bulk Cable Weight</b>	47 Kg/km
<b>Max. Pull Tension</b>	100N
<b>Min. Bend Radius (installation)</b>	8x OD.
<b>Min. Bend Radius (installed)</b>	4x OD.
<b>Cold Bend</b>	No crack @-20°C x 4hrs
<b>Storage Temp.</b>	-20°C to +70°C
<b>Operation Temp.</b>	-20°C to +60°C
<b>Installation Temp.</b>	0°C to +50°C

**CABLE SPECIFICATION (ELECTRICAL PROPERTIES AT 20°C)**

Parameters	Units	Value
<b>Characteristic Impedance</b>	(1-100MHz)	100 ±15Ω
	(100-250MHz)	100 ±18Ω
	(250-500MHz)	100 ±25Ω
<b>DC Resistance</b>	Ω/100m	≤ 9.38Ω/100m max.
<b>Resistance Unbalance</b>	%	≤ 2%
<b>Capacitance Unbalance to Earth</b>	Pf/km	≤ 330 pF/km
<b>Delay Skew</b>	ns/100m	≤ 45ns/100m
<b>Nominal Velocity of Propagation</b>	%	68%
<b>Propagation Delay (Nominal)</b>	ns/100m	533ns/100m at 500MHz
<b>Test Voltage (d.c. for 1 minute) Conductor /Conductor</b>	VDC	1000V
<b>Insulation Resistance (500V d.c)</b>	MΩ	≥ 500MΩ/KM

**TRANSMISSION LINE PERFORMANCE AT 20°C**

Freq. MHz	RL ≥dB	ATT ≤dB	NEXT ≥dB	PHASE DELAY ≤ns	PSNEXT ≥dB	ELFEXT ≥dB	PSELFEXT ≥dB
1	20	2	74.5	570	72.3	68	65
4	23	3.7	65.3	552	63.3	56	53
10	25	5.9	59.3	545	57.3	48	45
20	25	8.3	54.8	541.2	52.8	42	39
62.5	21.5	14.9	47.4	538.5	45.4	32.1	29.1
100	20	19	44.3	537.6	42.3	28	25
250	17.3	31	38.2	536.1	36.5	20	17
500	15.2	45.4	33.7	532	31.8	14	11
600*	17.3	50.1	60.7	535.5	57.7	38.4	35.4

\* Performance for frequencies beyond TIA and ISO requirements are for information only.

**ORDER INFORMATION**

CC	1	2	3	4	5
----	---	---	---	---	---

CC	1	CABLE CATEGORY	2	CABLE STRUCTURE	3	JACKET COLOR	4	JACKET MATERIAL	5	PACKING
6A	CAT 6A	U	U/UTP	BL	BLUE	L	LSZH	5	500MTR/REEL	
				GY	GREY	C	PVC CM	3	305MTR/REEL IN CARTON	
				WH	WHITE	P	PVC			
				BK	BLACK	E	PE			
				GR	GREEN					
				PR	PURPLE					
				RD	RED					