

## Anti -PD1 Mouse mAb

GB12338 100 µL -20°C

### Product Information

<b>Description</b>	PD-1 mouse monoclonal antibody
<b>Protein full name</b>	Programmed cell death protein 1
<b>Synonyms</b>	Protein PD-1, mPD-1, CD279, Pdcd1, Pd1, SLEB2, Systemic lupus erythematosus susceptibility 2, hSLE1
<b>Immunogen</b>	KLH conjugated Synthetic peptide corresponding to Mouse PD1
<b>Isotype</b>	IgG
<b>Purity</b>	Affinity purification
<b>Subcellular location</b>	Cell membrane
<b>Uniprot ID</b>	Q02242, Q15116

### Applications

Applications	Species	Dilution	Positive Sample
IHC/IF	Human, Mouse, Rat	1:400-1:2400	B-cell lymphoma, lymph node, tonsil

### Background

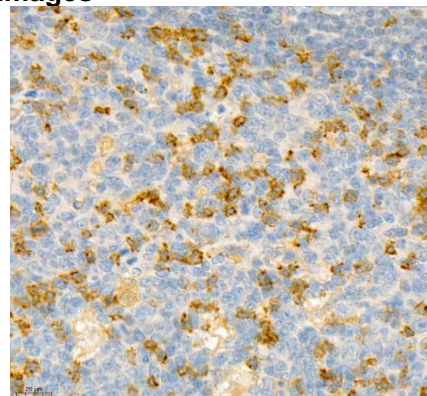
Programmed cell death 1 (PD-1, also known as CD279) is an immunoinhibitory receptor that belongs to the CD28/CTLA-4 subfamily of the Ig superfamily. It is a 288 amino acid (aa) type I transmembrane protein composed of one Ig superfamily domain, a stalk, a transmembrane domain, and an intracellular domain containing an immunoreceptor tyrosine-based inhibitory motif (ITIM) as well as an immunoreceptor tyrosine-based switch motif (ITSM). PD-1 is expressed during thymic development and is induced in a variety of hematopoietic cells in the periphery by antigen receptor signaling and cytokines.

### Storage

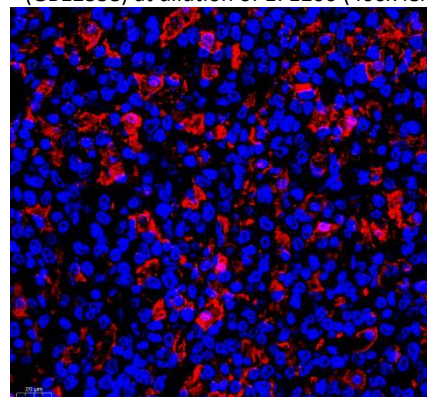
<b>Storage</b>	Store at -20 °C for one year. Avoid repeated freeze/thaw cycles.
<b>Storage Buffer</b>	PBS with 0.02% sodium azide, 100 µg/ml BSA and 50% glycerol.

**NOTE:** 1. This product is intended for research only.  
2. This product is recommended to dilute with the Primary Antibody Dilution Buffer. (G2025)

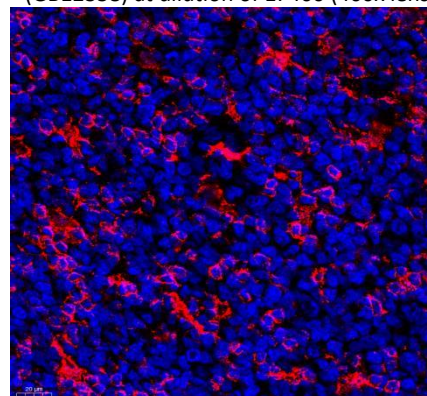
### Images



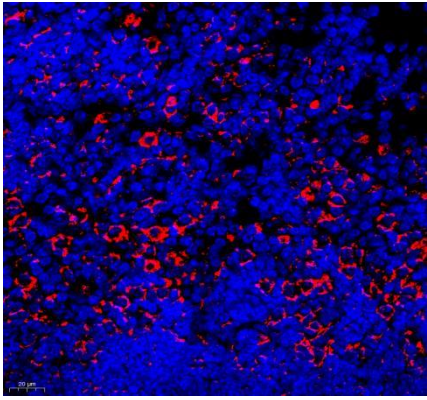
Immunohistochemistry of paraffin embedded human tonsil using PD1 (GB12338) at dilution of 1: 1200 (400x lens)



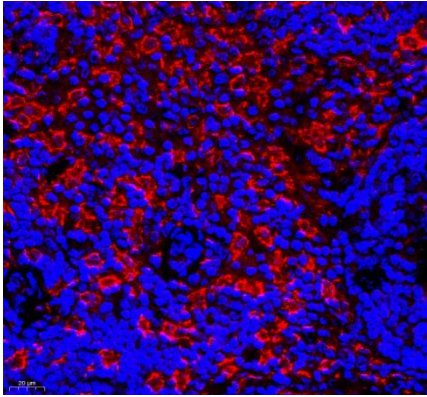
Immunofluorescence of paraffin embedded human B-cell lymphoma using PD1 (GB12338) at dilution of 1: 400 (400x lens)



Immunofluorescence of paraffin embedded human tonsil using PD1 (GB12338) at dilution of 1: 400 (400x lens)



Immunofluorescence of paraffin embedded mouse lymph node using PD1 (GB12338) at dilution of 1: 400 (400x lens)



Immunofluorescence of paraffin embedded rat lymph node using PD1 (GB12338) at dilution of 1: 400 (400x lens)