

2022-2023

Impact Report





What's Inside

LETTER FROM THE PRESIDENT.....	1
WHO WE SERVE.....	2
HOW WE SERVE.....	3
JB'S INSPIRATION.....	4-5
OUR NATIONAL IMPACT.....	6-7
CRITICAL MILESTONES.....	8
WINTER ADAPTIVE SPORTS PROGRAM.....	9
SUMMER ADAPTIVE SPORTS PROGRAM.....	10
INTERNSHIP PROGRAMS.....	11
SCHOLARSHIP PROGRAMS.....	12
FINANCIAL HIGHLIGHTS.....	13
OUR VOLUNTEERS.....	14
2022-2023 DONOR LIST.....	16-20
NEDS FOUNDATION.....	17
SPECIAL EVENTS.....	19
COACH FOR A DAY.....	20
LOOKING FORWARD.....	21

MAKING A DIFFERENCE

New England Disabled Sports (NEDS) is a nationally recognized program, providing year-round adaptive sports instruction to individuals living with physical and/or cognitive disabilities.

As a not-for-profit organization, the effectiveness of NEDS adaptive sports programs relies fully on generous donor contributions and grants, the critical backing of Loon and Bretton Woods Ski Resorts; the commitment of over 200 volunteer coaches; and our dedicated employees. Through your collective support, we can serve close to 600 students with disabilities each year in their pursuit of sporting goals and fulfilling experiences.

We thank you all for the dedication, passion, and contributions that help us achieve our mission to enhance lives, affected by disabilities, through sports and recreation.

STAFF

Terry, MacDonald, *Managing Director*
Jason Lafontaine, *Program Manager*
Delia Sullivan, *Office Coordinator*
Kurtis Pierret, *Sports Coordinator*
Kealand Nicoll, *Sports Coordinator*
Vance Perry, *Corporate Development Director*

THE BOARD

Dr. Jessica Harney, *President*
Sarah Everhart-Skeels, *Vice President*
Phil Lembo, *2nd Vice President*
Robert (Bob) Mulhall, *Treasurer*
Kari Christiansen, *Secretary*
Bruce Booth, *Director*
Timothy J. Connelly, *Director*
Michael J. Cummings, *Director*
Christopher Ellms, *Ex-Officio*, Bretton Woods Ski Resort
Margie Gozdoff, *Director*
Dr. Brian Holub, DVM, *Director*
John Imbrescia, *Director Emeritus*
Cathal McGloin, *Director*
Steven Picardo, *Assistant Treasurer*
Claudine Dejoie-Stanton
Jay Scambio, *Ex Officio*, Boyne Resorts

GRANT COMMITTEE

We extend sincere thanks to our Volunteer Grant Committee, whose skills and work on grant submissions have led to an average of six proposals annually, yielding a success rate of 3 or 4 grants each year. Their dedication is vital to sustaining our adaptive programs and enabling outreach to individuals with disabilities. Their commitment creates enduring impact, nurturing a culture of inclusion. Grateful for their invaluable contributions, the committee continually seeks new grant opportunities, ensuring the ongoing success and growth of our program.

Sarah Everhart-Skeels
Kurtis Johnson
Claudine DeJoie-Stanton
Courtney Holub
Jason Lafontaine

THANK YOU

Our gratitude to our talented photographers, Ken Watson and Steve Glad, who have enriched this annual report with their generous and plentiful contributions of photos. We are truly thankful for their time and skills.

Harney Family 2011
Building Dedication



Dear NEDS Community,

As we reflect on 36 years as an adaptive sports organization, it brings me great pleasure to share with you, the first New England Disabled Sports Impact Report, highlighting achievements that have marked our journey in empowering athletes with any disability to discover their potential and achieve new heights.

First and foremost, I want to express my sincere gratitude to our amazing staff, supporters and over 200 volunteers. Your unwavering commitment has been the driving force behind our success. Because of you, we have been able to provide positive, life-changing adaptive sports experiences to individuals with a wide range of disabilities. In three decades of operation, New England Disabled Sports has witnessed significant growth and development. We have expanded our reach, welcoming more participants than ever before.

In 1987 adaptive sports was formalized as a non-profit organization at Loon Mountain with about 10 volunteers and about 30 lessons in its first season. White Mountain Adaptive Ski School would become New England Disabled Sports nearly two decades later, passing 2000 snow sports lessons in 2022-2023.

We have physically grown from 1987 in the concrete locker room under the Loon Gondola barn to a decade in the famous Blue Room of the Governors Lodge to

dedicated Adaptive Sports Centers at Loon Mountain and Bretton Woods, Omni Mt. Washington.

Today our year-round programming is thriving. Our ski and snowboard programs, along with our summer activities such as kayaking, down-hill mountain-biking, golf and cycling, offer athletes not only the joy of physical activity but also a sense of community and belonging. The transformative power of adaptive sports is evident in the smiles, laughter, and camaraderie shared by our athletes and their families, creating lasting memories and fostering a supportive environment.

Thanks to the generosity of our donors, New England Disabled Sports has been able to invest in state-of-the-art adaptive equipment, enhance our facilities, and provide scholarships to ensure that financial barriers do not limit participation. Your contributions have been instrumental in sustaining and advancing our mission.

The Impact Report is an incredible testimonial to the accomplishments of New England Disabled Sports. One of our proudest accomplishments over the last 36 years is the community of family the organization has built. We have been through the happiest and most challenging days together. We have celebrated milestones of athletes

and volunteers alike; we have stood by each other in challenge and loss. This is chosen family for life, we come back year after year for more.

We are excited about the possibilities and opportunities that the future holds. We remain dedicated to our mission of enhancing the lives of individuals with disabilities through adaptive sports, and we are committed to continually improving and expanding our programs to reach even more individuals in need.

I extend my deepest appreciation to you for your continued support of the organization. Together, we are making a meaningful difference in the lives of those we serve, and I am confident that the effect of our efforts will resonate for years to come.

Thank you once again for being an essential part of our journey.

Dr. Jessica Harney
President of New England Disabled Sports

Who We Serve



WINTER PROGRAM 2022/23

465

STUDENT ATHLETES
SERVED

47

VETERAN ATHLETES
SERVED



SUMMER PROGRAM 2023

77

STUDENT ATHLETES
SERVED

11

VETERAN ATHLETES
SERVED

54

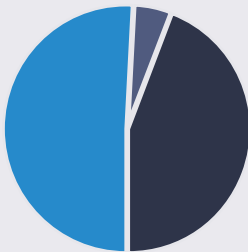
NEW STUDENTS
IN 2022-2023

39

STUDENTS
PARTICIPATED IN
BOTH WINTER AND
SUMMER PROGRAMS

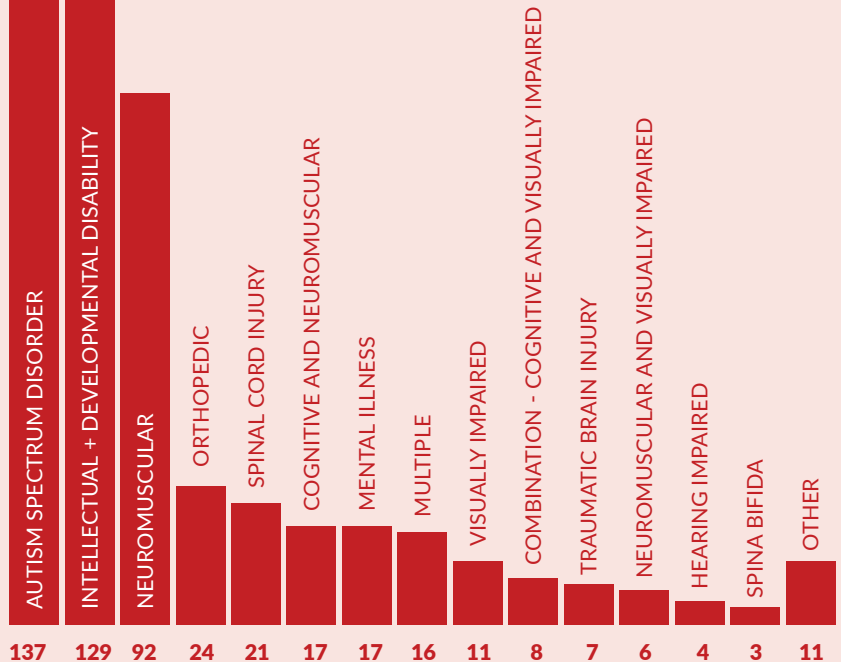
503

STUDENTS WERE
SERVED IN 2022-2023
ACROSS THE FOLLOWING
AGE GROUPS:



- Ages 65-85 (5%)
- Ages 18-64 (44%)
- Ages 4-17 (51%)

OUR PROGRAMS ARE OPEN TO INDIVIDUALS WITH A WIDE RANGE OF DISABILITIES. LAST YEAR, THE DISABILITIES OF THE PARTICIPANTS WE SERVED INCLUDED:



“Not only has she become an accomplished skier, but she has gained confidence and independence, which has been huge for us as parents.”

-ALEX MATHEWS (parent of Grace)



WINTER PROGRAM 2022/23

2,088

LESSONS PROVIDED

6,024

TOTAL LESSON HOURS

358

STAND UP LESSONS

107

SIT DOWN LESSONS

268

VETERAN LESSONS



2,060

SKI & SNOWBOARD LESSONS



16

NORDIC SKI LESSONS



12

SNOWSHOE LESSONS



SUMMER PROGRAM 2023

561

LESSONS PROVIDED

1,683

TOTAL LESSON HOURS

46

VETERAN LESSONS



228

GOLF LESSONS



129

CYCLING LESSONS



107

PADDLING LESSONS



38

MOUNTAIN BIKING LESSONS



28

PICKLEBALL LESSONS

Sign Up for a Lesson



JB's Inspiration

“Is Loon as cold as Mars? What will the Patriots do without Brady? Why do you like AC/DC?”

Chairlift rides with JB Harvey were always a treat, fueled by his curiosity and inquisitive mind. We covered many fun topics, on and off the slopes.



The first time JB skied with NEDS he was barely 4 years old. It was December, 2011 and he was a little boy unsure of what to expect. The coaches, who we still know well, took such good care of JB and his nervous mother. To say that JB loved it was an understatement. For a kid who wanted nothing more than to run fast, play sports, and be like everyone else, skiing was the solution. Unable to speed down the football field as he would have liked, he was able to feel the wind rush by him on the slopes. Where he needed pinch runners in t-ball, here he felt like a full participant. Through skiing he was able to enjoy time with family and friends and be just like everyone else.

Early on JB had a need for speed! His coaches needed to be in top skiing shape. He thrived with the teenage PAC coaches and with coaches that shared his competitive desire to ski as many runs as possible. For years he had different themed duct tape on his mittens so coaches could call out which side to turn to. You could hear coaches yell out “minion” and “spiderman” as he tried to beat his records.

As JB’s Duchenne Muscular Dystrophy disease progressed, he became more hesitant. His anxiety would creep in, needing me at the bottom of the hill after each run. Everyone at NEDS was so accommodating and helpful. For most of one winter he was in an intensive outpatient program for his mental health. The only thing that kept his spirits up was knowing we would make the drive north on Friday to ski.

Although JB was ambulatory for his first six years of skiing, we knew his abilities would decline. When he became solely reliant on a power wheelchair, his muscles and back were often hurting. As he started to have a harder time making turns and skiing on bumpy days, he was introduced to a piece of equipment that changed his world, the TetraSki. It came at the perfect time. In the TetraSki, JB was actually skiing, virtually independently. He loved it and he hoped to inspire coaches to teach others with the TetraSki.

Sadly, we lost JB, unexpectedly soon, this past July. He would be so happy to see that there are two TetraSkis at NEDS this winter, so that others can have the best experience, as he did. We can not thank NEDS enough for being a real family for JB for over 10 years. He loved his days skiing, his lift rides where he would ask a million questions, his time hanging out in the blue room, and each relationship he had that came from NEDS.

-BETH HARVEY, JB’S MOTHER



“JB was a passionate and competitive skier. We decided once to “break the record” for most runs in a day. I vividly recall unloading and preparing the tethers as JB implored us to hurry up! His focus and stamina were the embodiment of his spirit—always a competitor, challenging himself and others to push their boundaries. We did break the record! 20 runs, 21 miles, and 22,500 vertical feet.

Helping JB enjoy the thrill of the mountains meant embracing empathy. JB wasn’t shy. When his rosy cheeks were chilly, he told us and we adjusted his facemask. When his hands got cold, we got hand warmers. If bumps were too much, we avoided them. If he got anxious about anything, we reassured him that we had him, safe and secure. We always had JB’s enjoyment, safety, and his desire to be challenged, at the heart of each lesson.

NEDS may have changed JB’s life for the better, but he changed ours too. He undoubtedly made me a better coach and, more importantly, a better person. Thank you, JB, for being a part of our lives.”

-BRUCE BOOTH, NEDS ADAPTIVE SKI COACH

Our National Impact

TetraSki Collaboration with the University of Utah & TRAILS

In 2020, NEDS acquired our first TetraSki for winter sports programming. We are delighted to announce the acquisition of a second TetraSki for the upcoming 2023/24 ski season. The addition of another ski will enable more students to experience the freedom of skiing. The TetraSki stands as the world's only independent alpine ski designed for athletes with complex physical injury or illness, emphasizing safety, performance, and independence.



The Hartford Ski Spectacular, Breckenridge CO

For 30+ years, NEDS coaches have been pivotal at Breckenridge's Ski Spectacular hosted by Move United. They dedicate a full week to teaching skiing techniques to individuals with disabilities, gaining recognition for their expertise. They lead intensive lessons and mentor interns/volunteers nationwide. Top level NEDS coaches often lead PSIA training clinics, ranking among the nation's best clinicians.



Move United, Maryland

New England Disabled Sports is a chapter of Move United (formerly Disabled Sports USA), and is governed by a Board of Directors, composed of 15 business leaders from all walks of life with a passion for adaptive sports and unparalleled commitment to the organization.

US Nationals Host

Our program's distinction in hosting the US Nationals for two consecutive years showcases our organizational prowess and dedication to promoting competitive skiing at a national level. The event has become a beacon of excellence within the adaptive skiing community.

Paralympic Medalists at Loon

The achievements of Paralympic medalists like Chris Young, Tyler Walker, and Laurie Stevens, nurtured under the mentorship of our instructors and PSIA examiners, exemplify the caliber of training provided by our program. Their success underscores our commitment to fostering talent and empowering athletes to reach the pinnacle of their abilities.

International Paralympic Classifier

Certified International Paralympic Classifiers within our program uphold the integrity of competitive skiing and snowboarding by accurately assessing athletes' impairments. Their medical and technical expertise ensures fair competition and proper classification for Paralympic skiing events, fostering a level playing field for all athletes.

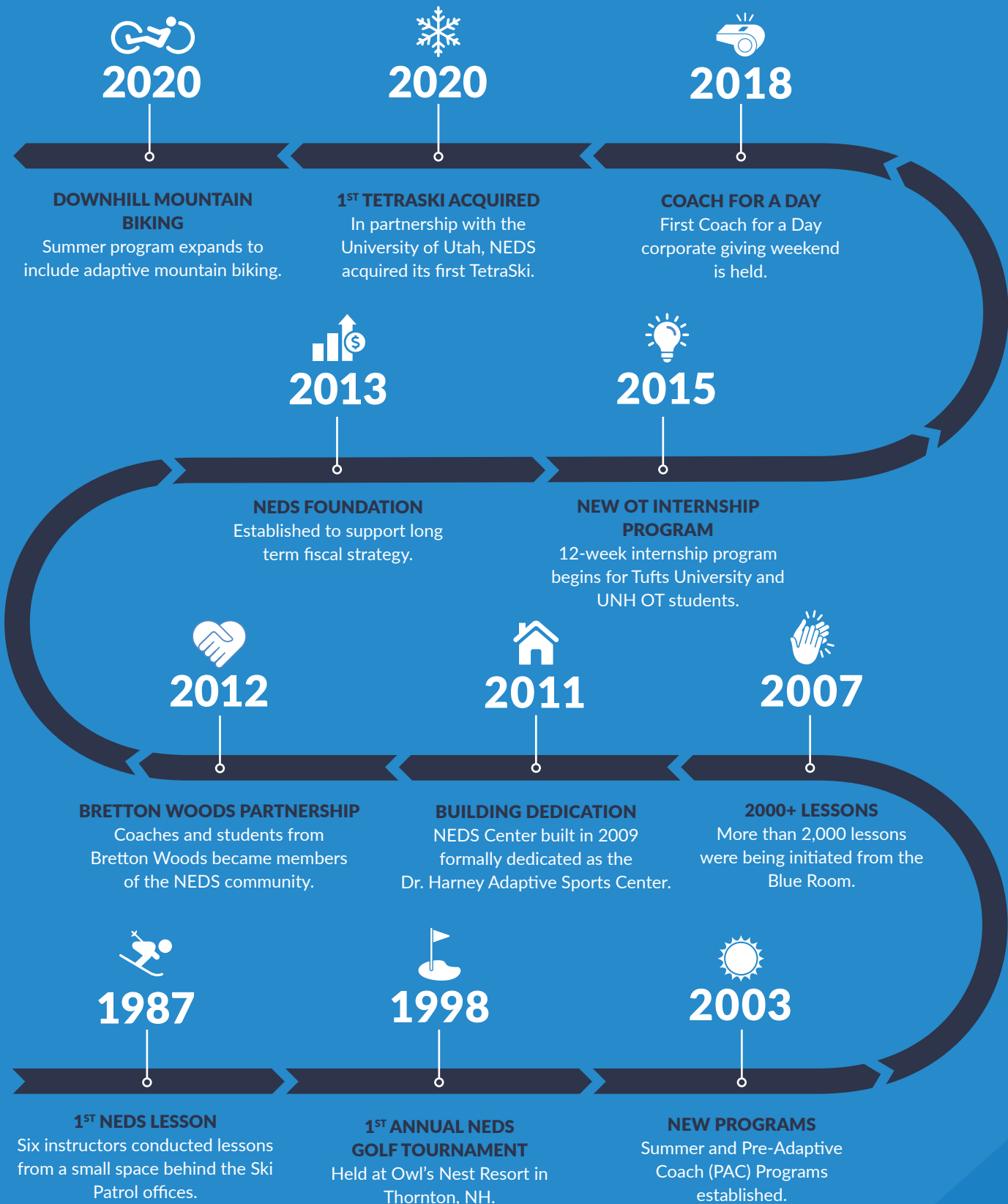
Past DSUSA Board Members

NEDS leaders proudly contributed to the governance of adaptive sports through the esteemed presence of board members at Disabled Sports USA (DSUSA), now Move United. Their expertise and dedication shaped national policies and initiatives, ensuring that adaptive skiing continued to flourish and reach new heights.

PSIA Examiners

NEDS takes great pride in the expertise of our esteemed PSIA examiners. With their wealth of ski technical knowledge and experience, they play pivotal roles in shaping the standards of ski instruction. Their knowledge ensures that NEDS ski and snowboard instructors are among the best in the industry, providing participants with top-notch guidance and support.

Critical Milestones



“Skiing makes me feel free.”

-WILLOW



Adaptive Winter Sports Program



Thanks to our valuable partnerships with Loon Mountain and Bretton Woods ski resorts, our adaptive winter program launched the ski season, allowing our student athletes to enjoy the White Mountains’ slopes, guided by our experienced volunteer coaches.

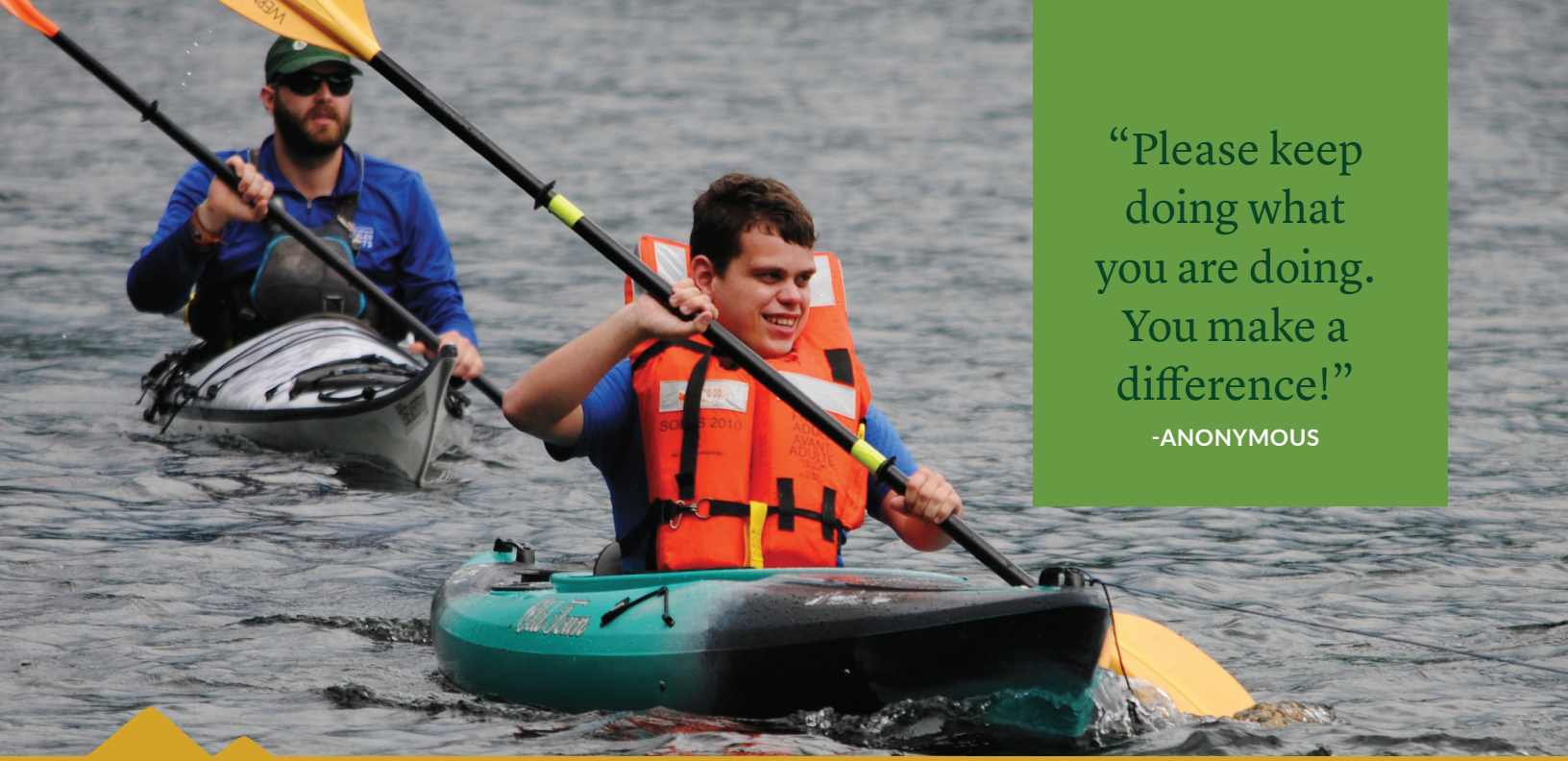
Through generous financial contributions and grants, we’ve expanded our adaptive ski and snow sports equipment inventory to serve a wide range of cognitive and physical needs. Notably, acquiring TetraSkis, advanced adaptive sit skis, has empowered individuals with complex disabilities to ski with higher degrees of performance and independence.



The unwavering support of our donors and volunteers sustains our mission, enabling us to offer transformative adaptive snow sports experiences to our community of student athletes with disabilities.

[Learn More](#)





“Please keep doing what you are doing. You make a difference!”
-ANONYMOUS

Adaptive Summer Sports Program



During the summer, NEDS provided a diverse array of adaptive sporting activities tailored for individuals with disabilities. These activities included weekly golf outings at nearby White Mountain region courses, adaptive cycling, exhilarating downhill mountain biking, paddleboarding, and engaging in pickleball.

Our student athletes had the opportunity to immerse themselves in a variety of adaptive sports amidst the picturesque surroundings. Our committed coaches played an instrumental role in instructing and guiding students, enabling them to achieve their objectives and embrace the pleasures of outdoor pursuits.

[Learn More](#) 



Internship Programs



Pre-Adaptive Coach (PAC) Program

Our Pre-Adaptive Coach Program (PAC), established two decades ago by Fred Law, supports teenage skiers and snowboarders who are passionate about helping individuals with disabilities enjoy snow sports.

Over the years, the program has nurtured a new generation of adaptive adult coaches that continue to volunteer at NEDS.

Under the guidance of seasoned coaches, our junior volunteers acquire practical experience in adaptive ski techniques. Their contributions significantly enhance the ski lessons, particularly for young students with disabilities, nurturing not only skills but also valuable friendships.. Each season, a group of well-rounded teens are selected through a competitive interview process to join the PAC Program.

[Apply to be a PAC Coach](#)



Occupational Therapy (OT) Internship Program

This program invites bachelor's degree graduates pursuing occupational therapy master's or doctoral degrees to commit to a 12-week internship in our winter or summer programs.

Interns fulfilling their fieldwork requirements and/or those pursuing doctoral experience components gain invaluable insights into physical, cognitive, and psychosocial needs of students with disabilities while becoming proficient with adaptive techniques.

Our NH-licensed OTs, Rina Drake, Janet Brooks, and Mary O'Donnell deliver the professional daily supervision that is essential for the interns to fulfill their fieldwork requirements. Their deep commitment combined with the professional support of other professional NEDS volunteers provide the backbone of this program's success. This unique internship program has thrived since its inception in 2015, facilitating intern involvement in an impressive 3,640 lessons.



Scholarship Programs

Scholarships are instrumental in promoting the awareness of adaptive sports and the inclusion of new students and their families in our programs. Generous donations enable this participation, with funds going towards expenses such as overnight accommodation, rental equipment, lessons, and ski passes. This is a much valued opportunity for families who have a member with disabilities to enjoy a safe and supportive environment for adaptive snow sports with NEDS.

[Reach Out to Us](#) 

JB'S KEYS TO DMD

After receiving a diagnosis of Duchenne Muscular Dystrophy (DMD) for JB, the Harvey family vowed to make a difference for boys living with DMD and their families. *JB's Keys to DMD* was founded with the mission to enhance the lives of boys with DMD by raising funds for care, quality of life, and research. So far, they've raised over \$4 million. Each winter, JB's Keys offers an adaptive skiing scholarship for boys living with DMD and their families.

BRAIT SCHOLARSHIP

Thanks to generous donations from Brait Builders, NEDS was able to create winter programming called W.I.N.G.S. - Weekend Instruction at NEDS to Grow on the Snow! This scholarship helps support individuals with Autism Spectrum Disorder (ASD) in adaptive sports. Bob and Michele Brait allocated funds to establish scholarships for those living with ASD and their families. Our volunteer coach, Jack Daly, is the ambassador for this program and coordinates the scholarship at NEDS.

SPORTS FOR LIFE

Sports for Life aims to promote adaptive sports opportunities for New England residents with disabilities to engage in snow sports. It introduces participants of all ages with any physical or developmental disability to various levels of adaptive sports, from beginners to potential Olympians. The scholarship funds, donated in memory of Herb Katz, help immerse first-time winter participants with NEDS in an adaptive sporting experience.

HOCKEY FIGHTS MS

Founded in 2005 by Candice Arnold, Hockey Fights MS is a unique organization whose mission is to raise money for research into the cause, cure, and treatment of multiple sclerosis (MS) and to help improve the lives of those living with MS by supporting local rehabilitation centers. Hockey Fights MS supports NEDS each year with a donation that supports students with MS partaking in our adaptive winter and summer sports programs.

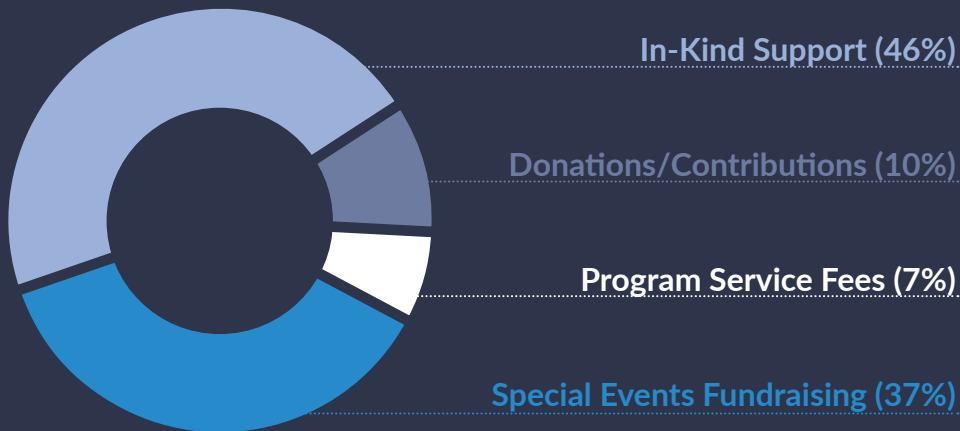
SPINAL CORD INJURY (SCI) SCHOLARSHIP

Thanks to a fantastic anonymous grant we're able to offer sports lessons for all SCI levels at no cost. If you or someone you know has a spinal cord injury reach out to our programming team to learn more.

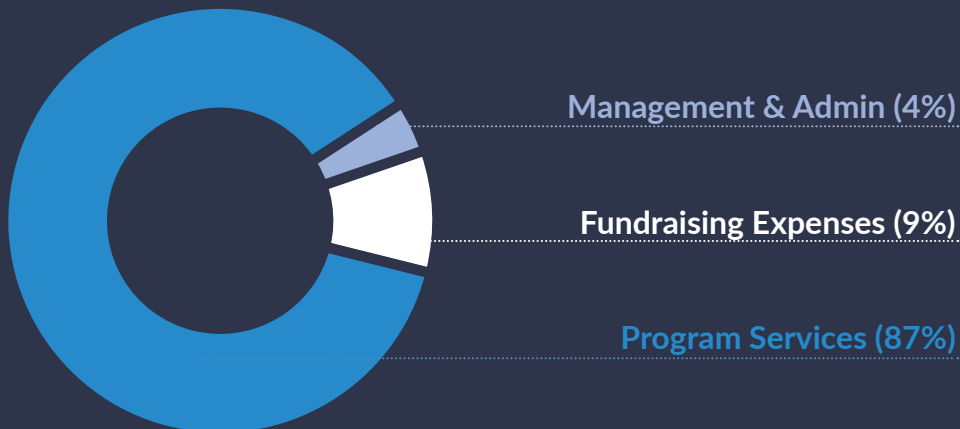
Financial Highlights

NEDS works hard to maintain a financial position that allows us to sustain our growth and fulfill our mission. Committed volunteers, prudent expense management, generous scholarships, awarded grants, and strong fundraising efforts contribute to a solid financial position.

OPERATING REVENUE: \$1.2 M

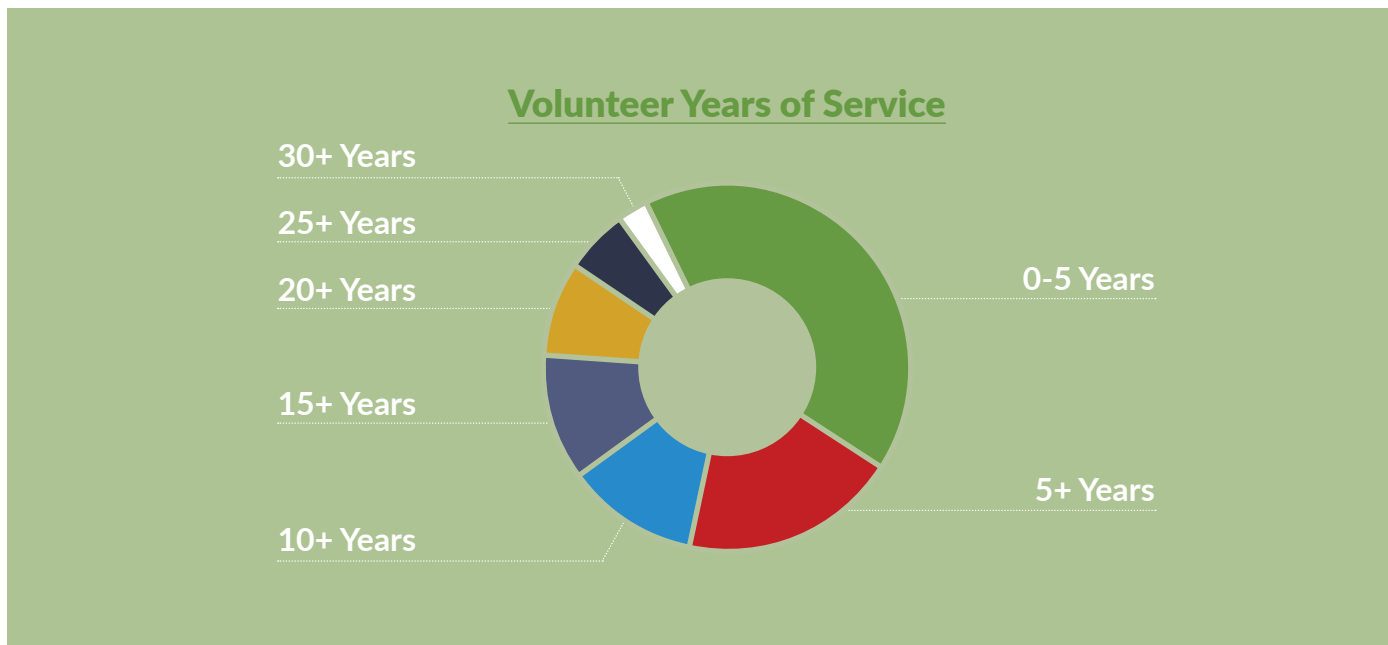


OPERATING EXPENSES: \$1.13 M



Our Volunteers

We take great pride in shining a spotlight on the incredible commitment of over 200 volunteer adaptive sports coaches who work tirelessly to ensure that student athletes can partake in the joys of adaptive sports.



“The staff has been exceptional during our first three lessons this year. The instructors are kind, energetic and extremely positive. Their spirit and commitment to skiing makes such a positive impact on our son’s lives.” -GOSHDIGIAN BROTHERS

[Become a Volunteer](#)

We rely on many volunteers who generously give their time and talents to NEDS. Our volunteer coaches from winter 2022/23 and summer 2023 are listed below according to the years of service they have given to NEDS. Many other volunteers work tirelessly behind the scenes supporting different aspects of our operation. Thank you to all volunteers past, present and future for your extraordinary service and long term contributions of time, energy, and talent.

30+ YEARS

Andrea Harney
David Clemence-
Schreiner
Diane Clemence-
Schreiner
Kari Christiansen
Terry Giove

25+ YEARS

Bonnie Marsan
Dave Micalizzi
David Blenkhorn
Don Powers
Hans Herzog
Jack Daly
Lonnie Sawyer
Peter Keller
Rene Varrin
Rina Drake
Tom O'Donnell

20+ YEARS

Beth Conner
Brian Holub
Brian Skeels
Claudine Dejoie-
Stanton
Dan Greer
Fred Law Jr.
Hal Sandstrom
Jerry Lavoie
John Callamaro
Joseph Hill
Karen Fair
Mark O'Donnell
Mia Jacobsen
Nancy Dorrans
Peter Valotto
Sarah Skeels
Steven Glad

15+ YEARS

Andrew Cummings
Bob Brait
Carolyn Ford
Cathal McGloin
Charlene Fallon
Donna Callamaro
Ed Meltzer
Elle Hotchkiss
Harrison Keyes
Jacquelyn Cantwell
Janet Brooks
Ken Asai

Louise Cummings
Michael Flynn
Mike Drake
Mike McCabe
Sally Waterhouse
Shaun Bogan
Stephanie Sullivan
Steve Picardo
Susan Ross
Wynne Freed

10+ YEARS

Arthur Remillard
Bob Davis
Brian Harrington
Cameron Shaw-Doran
Chris Baylow
Curt Stevenson
Hannah Drake
Jerry Nightingale
John Ross
Kaitlyn Smith
Kellie Rowell
Kevin Holub
Kevin Sullivan
Kim Perry
Kurt Christensen
Lisa Viveiros
Margie Gozdiff
Melisa Myles
Mike Cummings
Peter Rowell
Rory McGloin
Sally Elshout
Vance Perry

5+ YEARS

Alan Lambert
Ashley Booth
Bill Madden
Bob Mulhall
Bruce Booth
Bruce Greer
Charles Petalas
Charlotte Wise
Christian Wise
David LaBrie
Delia Sullivan
Dominic Janssens
Emma Montgomery
Erick Grimes
Heather Rowell
Holger Noreke
Imad Khan
Jacquelyn Shaw
Joe Scully

John Sullivan
Jonathan Matthews
Kurtis Johnson
Liz Potter
Mary O'Donnell
Michael Hamori
Michele Brait
Nicholas Conner
Peter Dixon
Robert Tozier
Sally Petalas
Sandra Imbrogna
Scott James
Sonya Hamori
Stephen Burchett
Suzanne Rappaport
Tim Rice
Tim Watson
Victoria Shopland

1-5 YEARS

Alex Karis
Allison Bloom
Amy Jackson
Anissa Noreke
Anthony Arcone
Blake Dagesse
Blake Greene
Blake Rose
Bo Jackson
Bob Hoaglund
Breanna Kunkel
Brian Denenberg
Brian Hewitt
Camryn Monfort
Catie Silvestri
Chloe Witt
Cindy Palfrey
Clinton Parrish
Daniel Dunn
Daniel Karambelas
Danny Halloran
Daria Casazza
David Corbett
David Hart
Dianne Angwin
Donna Green
Eileen Conley
Elly Skeels
Emma Sufariu
Erin Kunkler
Eva Greene
Gabe Silverman
Grace Coughlin
Greg Reynolds
Hannah Okonsky



Henry Booth
Henry Good
Isabelle Copponi
Isabelle Danahy
Jacob Dixon
Jacqueline Kehoe
Jake Powers
James Nicklas
Janice Reynolds
Josh Gustafson
Jules Coleman
Katherine Gines
Katie Gustafson
Kelly Houlihan
Kent Kunkel
Kim Richards
Kristen Connolly
Kylie Green
Liam Wise
Luke Karelas
Mark Bergeron
Mary Perkins
Meg Matthews
Meghann Jones

Melissa Devine
Michael Margarcei
Mio Kerr
Nate Clancy
Nicholas Armstrong
Paige Doherty
Phoebe Hamori
Preston Carbone
Rebecca McNulty
Rex Cinelli
Richard Feeney
Richard Pierce
Robin Palfrey
Rodney Kidder
Ryan Noreke
Shields Day
Sloane French
Sophie Gustafson
Susan Madden
Thomas Ravenelle
Tyler Conner
Victoria Clancy
Wendy Katsekas

Donors

Extraordinary giving calls for extraordinary recognition. We thank the following donors for their generosity and support for our mission.

CORPORATE DONORS

Acadian
 Accenture
 Alnylam
 Bank of America
 Barclays
 BNY Mellon
 Burgeon LLC
 Colliers
 Choate
 Citi
 Deloitte
 EBSCO Information Services
 Empower
 Ernst & Young
 Evercore
 Eversource Energy
 FDR Center for Prosthetics & Orthotics
 Feeney Brothers Excavation Corporation
 Fidelity
 Goldman Sachs
 J.Calnan Construction
 JW Construction
 Keegan Werlin LLP

Keybanc
 Loomis Sayles
 Mizuho
 Morgan Stanley
 MUFG
 NEPC, LLC
 Neuberger Berman
 Parametric
 PNC
 Putnam
 PWC
 RBC Capital Markets
 Ropes & Gray
 Samuel Ramirez & Co
 Siebert Williams Shank
 Slalom
 Solid Biosciences
 St. Mary's Bank
 TD Securities
 US Bank
 Vertex
 Waffle Cabin
 Walsh Brothers Inc.
 Woodstock Inn & Brewery
 Wave Technologies
 Wave Life Sciences
 Wells Fargo

GRANTS

Anonymous
 Move United
 Rivers School
 Killington World Cup Foundation
 Northeast Credit Union Foundation
 The Red Sox Foundation
 Boston Bruins Charitable Foundation
 EBSCO
 Craig H. Neilsen Foundation
 New Hampshire Charitable Foundation
 Sarepta Therapeutics
 Christopher and Dana Reeves Foundation
 UNICO Merrimack Valley Foundation
 Speedway Children's Charity

Andrea & Craig Hillier
 Andrew Cummings
 Andy & Emma Dargle
 Andy Reinach
 Angela Pedley
 Anna & Ronald Schafer
 Anne Dixon
 Anonymous
 Anthony Lamacchia
 Anthony Marino
 Anthony Smith
 Aubuchon Hardware
 Austin & Dana Dodge
 Axel Hoos
 Azimuth Check Foundation
 Babara Sullivan
 Baron's Major Brands
 Ben Shearer
 Bernard & Judith Peloquin
 Bettina Ries
 Bill & Jackie Cantwell
 Bill & Mary Reissfelder
 Bill & Susan Madden
 Bin Ends Wines
 Robert & Kathy Mulhall
 Boston Casting Co.
 Brett Giroux
 Brett Lucas
 Bruce Dawson
 Bryan Hazelton
 Bryan Lambert
 Burgeon Outdoor, LLC
 Caitlin O'Connor
 Cam McGurk
 Campbell Family Charitable Fund
 Carl & Maryann Keller
 Carl Morris
 Carly Golden
 Carol Ann McGurk
 Carol Millard
 Carole Nuechterlein
 Caroline Counselman
 Casey Jordan
 Cathal & Leonie McGloin
 Charlene & Bill Fallon
 Charles McKenna
 Cherie Smeltzer
 Cheryl Kimball
 Cheryl Williams
 Chris Dufresne
 Chris Turunen
 Chris Dunn
 Christian Grant
 Christopher Rioux
 Christopher Baker
 Christopher Fall
 Cindy Boschetto
 Clarence Knight

INDIVIDUAL AND IN-KIND DONORS

We thank all of our donors who have contributed \$100 or more for their support over the past 3 years. Donors are listed in alphabetical order and excludes donors who wish to remain anonymous.

Acorn Hill Foundation, Inc
 Adrienne Burley
 Adrienne Mollor
 Al Gauron Deep Sea Fishing & Whale Watching
 Alan Jette
 Albert Hwang
 Alex Capano
 Alex & Martha Mathews
 Alexandre Simoes
 Alfred Orlandi
 Alfred Torrisi
 Ali Beauchamp Ferrante
 Alison Farquhar
 Alison Kapilow
 Allison McLaughlin
 Amanda Gruber
 American Legion Post 35
 Amsi Morales Owens
 Amy Bois
 Amy Fallon
 Amy & Jon Uroskie
 Andre Turenne
 Andrea DiMella
 Andrea Harney





NEDS Foundation

The goal of the NEDS Foundation (NEDSF) is to raise enough principal to generate financial support to assure the annual and long-term financial sustainability of New England Disabled Sports.

BOARD OF NEDSF TRUSTEES

Dr. Brian Holub, *President*
 Joseph Hill, *Vice President*
 Robert Mulhall, *Treasurer*
 Tim Connelly, *Trustee*
 John Imbrescia, *Trustee*
 Steven Picardo, *Trustee*
 Jessica Harney, *Trustee, NEDS Representative*

FOUNDATION DONORS

Brian Holub/Cindie Davis
 Holub Foundation
 Tim and Amie Connelly
 Cathal and Leonie McGloin
 Robert & Kathy Mulhall
 Richard & Patricia Moed
 Marcia Stone
 Dick & Kathy Flanagan
 Alan & Sharon Jette
 John & Marcia Imbrescia
 Michael & Ellen Kneeland
 Dave & Kallie Micalizzi /
 KMDM
 Ellen Freeman
 Ed & Marilyn Meltzer
 Steve and Sara Glad
 Dave & Barbara Chase
 Barbara Rosenfield
 The Katz Family in memory
 of Herbert Katz
 Tom & Susan O'Donnell
 Brian & Jill Holub / My
 Tribute Gift Foundation
 John & Donna Callamaro
 Laura Klein
 Shalendar & Kum Kum
 Bhasin
 Anonymous Donor (2)

Claudine DeJoie-Stanton
 Coleen Watrous
 Colleen Terriff
 Colton Caderette
 Combine Jewish
 Philanthropies
 Community Foundation of
 North Central Massachusetts
 Courtney & Robert Heath
 Courtney Holub
 Craig Theisen/Peak Organic
 Cross Creek Advisors
 Cure SMA
 Curtis Connors
 Cynthia Howlett-Willis
 Dan & Mary Anne Dowd
 Dan & Melissa Greer
 Daniel Dunn
 Daniel Geffken
 Daniel Katsekas
 Danielle McCauley
 Danny Cordella
 Dave Hill
 David Robbins
 David & Anousone
 Lettenberger
 David & Jean Sacra
 David & Laura Hanson
 David Baroodly
 David Benini
 David Berube
 David Cunningham
 David Hart
 David Keller
 David Morse
 David Robbins
 David Scadden
 Delia Sullivan
 Debby Boyle
 Debra Walley
 Deirdre Byers

Derek Leathers
 Designs by S & R
 Diana Friedlander
 Diane Swerling
 Donna & Jerry Hevern
 Donna McHugh
 Doug Stuart
 Douglas Fabbriatore
 Douglas Potter
 Dr. Michael Rho
 Drummond's Mountain Shop
 Duke Energy
 Eamon McDermott
 Eastern InterClub Ski
 League Inc.
 Eileen & Larry Samberg
 Eileen Arsenault
 Eileen Toti
 Elaine Paul
 Elizabeth Phillips
 Elle Hotchkiss
 Ellen Freeman
 Emily Consilvio
 Emily Seward
 Emmy Asklar
 Eric & Jodie Sandman
 Eric & Meredith Kaplan
 Eric & Meredith Rizza
 Eric Larson
 Eric Nelson
 Erica Silverman
 Evan Peverley
 Eversource Energy
 F.X. Magner Selections
 Feroletto Steel Company, Inc
 Flanagan Flanagan
 Florence Tobin
 Flylow
 Francis Provencher Insurance
 Agency
 Frank & Caryl Bingham

Frontstream
 Gabe Harwood
 Gaetan Turenne
 General Reinsurance
 Corporation
 Gerald Fels
 Gerben & Janice DeJong
 Gino & Patricia DiSciullo
 Glade Optics
 Glen Ni
 Glenn & Joan Hammond
 Glenn Gosselin
 Gordi's Fish and Steakhouse
 Graham Watkins
 Greg Pariseult
 Greg White
 Gregory Popa
 GV team
 Gypsy Café
 H. Fort Flowers
 Foundation, Inc
 Hale & Sarah Pulsifer
 Heather Gierej
 Herbert Katz Family
 Irene Foley
 Italian American Club of Local
 103 IBEW
 Jack Brait
 Jack Daly
 Jack Paster
 Jack's Auto Parts
 Jackie Marraffa
 James & Kristy Tiampo
 James & Michelle Valeriani
 James Catudal
 James Gaul
 James J. Tiampo
 James & Patricia Lucarelli
 James Murphy
 James Nordhill
 James Salois



James Ullrich
 Jamie O'Brien
 Jane Durning
 Janet Brooks
 Janice McCollum
 Jason Gardner
 Jason Leverone
 Jay Driscoll
 Jay Scambio
 Jean Robinson
 Jean's Playhouse
 Jeff & Amy Picard
 Jeff & Kate Hetu
 Jeff & Marla Schachter
 Jeffrey & Mary Littlejohn
 Jeffrey Burt
 Jeffrey Feingold
 Jeffrey Moran
 Jennifer & Kent Kunkel
 Jennifer DiLillo
 Jennifer Fuglestad
 Jennifer Kaddy
 Jeremy Gonsalves
 Jerry & Pat Dilillo
 Jessica Boynton
 Jessica Harney
 Jessica Marunowski
 Jim Foley
 JMM Foundation
 Joanna & Richard Carpentier
 Joanna Horobin
 Joe Chevarley, Jr.
 Joel Gardiner
 Joel Shortlidge
 Joseph Hill
 John Granger

John & Elisabetta Costantini
 John & Marcia Imbrescia
 John & Liz Costantini
 John Basham
 John Glaser
 John Granger
 Bin Ends Wines
 John Kloviski
 John Randall
 John Salkowski
 John Siciliano
 John Simeone
 John Swain
 John Terwilliger
 John W & Clara C Higgins
 Foundation
 Jon Bell
 Jon Desjardins
 Jon Mike Watson
 Jon Weinstein
 Joseph Jones
 Joseph Scully
 Joseph Umbach
 Josh Shockley
 Judith & Steven Myers
 Judith Blinn
 Judith Myers
 Julie Lindholm
 Justin Wahls
 Kaitlyn Smith
 Karen Cyr
 Karen Kapp
 Karen O'Sullivan
 Karen Otto
 Karen Shull-Archer
 Karey Barker
 Kari Christiansen &
 Don Powers
 Kartikeya Pant

Karyn Ward Enos
 Kasey Austin
 Katherine Martland-Kile
 Katherine's Team to
 Fight Autism
 Kathleen Cail
 Kathleen Collins
 Kathy Bergsteinsson
 Kathy Margerison
 Keith Tetley
 Kelly Bliss
 Kelly Houlihan
 Kelly Weigel
 Kelsey Tripp
 Ken Asai
 Kenneth Ottenbacher
 Kenneth Sullivan
 Kenyon & Kathy Tuthill
 Keren Hummer
 Kevin Sullivan
 Kevin & Niki Murphy
 Kim & Vance Perry
 Kim Curtis
 Kimberley Maiberger
 Kimberly Trottier
 Kimberly Misco
 Kinlin Family
 Kristen & Vikram
 Mansharamani
 Kurt Adams
 Brenda Cosby
 Kurtis Johnson
 Kwai-Chu Lan
 Kyle Holmberg
 Larz Anderson Auto Museum
 Launch Trampoline Park
 Laura Palumbo-Hanson
 Laura Welsh
 Lauren and Jeffrey West
 Lauren Greer
 Lauren McGuire
 Laurie Brustlin

Laurie Himml & Paul Abel
 Lawrence & Linda Ardito
 Lawrence Berman
 Lawrence Wallach
 Les Kellner
 Lilian Stern
 Lincoln Sign Co.
 Linda Marino
 Lisa & Craig Rodia
 Lisa Gillies
 Lloyd Hawthorne
 Loon Mountain Ministry
 Loon Mountain Recreation
 Corp.
 Loon Mountain Ski Patrol
 Loon Snowmaking Operations
 Lori Rogers
 Lorraine Harrigan
 Luca Ricco
 Ludes Family Foundation
 Lyle & Margot Pirnie
 Lynn Despelteau
 Mia Jacobson
 Marc Joslow
 Marc Silber
 Margaret Golden
 Margaret Keefe
 Margie Gozdoff
 Marianne Potter
 Marie Lyons
 Marisa and Justin Gelfand
 Marissa Demos
 Mark & Peggy Anketell
 Mark Barrett
 Mark Carlson
 Mark Kane
 Mark Lasek
 Mark Paquin
 Mark Sullivan
 Mark Tebbe
 Mark Wissmann
 Martha Pellegrino
 Mary Ann Mulhall
 Mary Carle
 Mary Nelson
 Matthew Cyr
 Matthew Perry
 Matthew Reed
 Maura Shaughnessy
 Maureen Arkle
 Meaghan Matthews
 Megan and Tyler Walsh
 Megan Mack
 Meghan McPhee
 Meredith Schmidt
 Michael Callahan
 Michael & Ellen Kneeland
 Michael & Fay Houde
 Michael & Karen Thompson
 Michael & Kerry Epstein
 Michael & Marian Marcoccio
 Michael A Provost
 Michael Albert
 Michael Borek
 Michael Brown
 Michael Lourie

2022-2023 DONOR LIST

Michael OSullivan
 Michael Sullivan
 Michele and Bob Brait
 Michele Musumeci
 Michelle Lee
 Michelle Ward
 Mike & Louise Cummings
 Mike Lynch
 Mike McCabe
 Mitsubishi Electric
 Mitsubishi Electric America
 Foundation
 Miyuki Kirby
 Montshire Museum of Science
 Mountain Club on Loon
 Dr. Nick Leschly
 James Coughlin
 David & Diane Clemence-
 Schreiner
 John & Marcia Imbrescia
 Meaghan Matthews
 Nicole Tewksbury
 MS Walker Inc
 Nancy Dougan
 Nate Lanier
 National Life Group
 Naveed & Caroline Rahman
 NEBCorp Donations
 Network for Good
 Neuberger Berman
 New England Ski Museum
 Nicholas Armstrong
 Nicholas DiPanfio
 Nicolas & Jessica Rioux
 O'Connor Committee
 Old Sturbridge Village

Omni Mount Washington
 Resort/Bretton Woods
 One Love Brewery
 OneHope
 Pamela Egan
 Pamela Peterson
 Patricia Granger
 Patrick & Laura Welsh
 Patsy Conder
 Patti & Scott Massey
 Patti Burlingame
 Paul & Kathy Napoli
 Paul Brigandi
 Paul Casparro
 Paul Colone
 Paul Harney
 Paul Keyes
 Paul Pedini
 Paul Petrocelli
 Paul Scleraris
 Paul Sharpe Memorial
 Pean Doubulyu Glass/
 Liz Pannell
 Peg and Carly Golden
 Penelope Conner
 Penni Conner
 Peter & Rachel Dixon
 Peter Keller
 Peter Kirby
 Peter Mooradian
 Phil & Sue Lembo
 Phyllis Giese
 Plymouth Elementary School
 R. Cornelius Danaher, Jr
 Rachel Morgenthal
 Randy Buswell

Ray Conner
 Reece Williams
 Regina & Timothy Sullivan
 Rene Varrin
 Rex Carr
 Rhonda Rosand
 Richard & Patricia Moed
 Richard Morrison
 Richard Piltch
 Richard Royer
 Riverwalk Resort at Loon
 Mountain
 RK & BA Chase
 Rob & Aimee McCarthy
 Rob & Vanessa Weisman
 Rob Tozier
 Robert Glazer
 Robert & Diana Griffin
 Robert Borden
 Robert Fain
 Robert Kunkler
 Robert Reiser & Co, Inc
 Robert Ross
 Robert Turunen
 Robert, Rosemarie &
 Victoria Ascii
 Rod Bosley
 Ron & Ame McPherson
 Ronald & Anna Schafer
 Ronald & Maureen Bleday
 Rory Blinn
 Rosemary Lavoie
 Rudolph Glocker
 Rustic River Restaurant
 Ryan Magee
 Saint Joseph Parish



Special Events

NEDS special events this year included our 25th annual Golf Tournament at Owl's Nest Resort, the Coach for a Day corporate offsite program, our annual Winter Challenge event, and Peer-to-Peer fundraising, all of which witnessed increased participation and contributions.

We would like to extend our thanks to all our sponsors, donors, participants and in-kind contributors that help make these annual events successful. We are also delighted to receive support for our new NEDS jackets from sponsors Empower and the Cindie Davis Holub Foundation.

How to Donate





Coach For A Day

Coach for a Day (C4AD) is a two-day offsite experience designed for companies to recognize and reward executives and high-value employees. This immersive weekend serves as both a team-building activity and an opportunity for experiential learning. Participants gain insight into the NEDS mission, develop a deeper understanding of the diverse disabilities our student athletes face, and have the privilege of shadowing a coaching session.

The program accommodates groups of up to 12 individuals and can be fully customized to align with your corporate objectives and preferences. As a sponsor of "Coach for a Day" your company can make a meaningful impact on our program and the lives of those we serve. Join us for this unique journey that combines personal development, team bonding, and giving.

Learn More



Sally Elshout
 Sally Petalas
 Sally Waterhouse
 Samantha Truex
 Sandra Imbrogna
 Santos Santos Nieves
 Sarah Glenfield
 Sawdust Emporium
 Scott & Coleen McAdam
 Scott Massey
 Scott Seaver
 Sean Sweeney
 Sharon Fisher
 Shelagh Griffin
 Shelley Bergeron
 Sheryl Bain
 Shift Group
 South Peak Resorts
 St Joseph's Church
 Stephanie & John Sullivan
 Stephanie Lewin
 Stephen & Donna Mastrocola
 Stephen & Rebecca Eppall
 Stephen Russell
 Stephen Vaudry
 Steven & Sara Glad
 Steve Crowell
 Steve Gordon
 The Picardo Family
 Steven Myers
 Steven Risch
 Stio
 Susan Dragoo Lembo
 Susan E O'Donnell
 Susan Hollis
 Swan Boats of Boston
 Takeda Pharmaceuticals
 Tammy Von Trotta
 Teresa Cabrerros
 The Evans Family
 The Nelson Family
 Foundation
 The Preservation Society
 of Newport
 The Uroskie Family
 Theresa Ehrlich
 Therese Giove
 Thomas Barbarich
 Thomas Carr
 Thomas Doherty
 Thomas Hense
 Thomas Montgomery
 Thomas Ravenelle &
 Theresa Sousoures
 Thomas Uroskie
 Tim & Elissa Rice
 Timothy Watson
 Todd & Karen Clark
 Todd Spayth
 Toebe Hinkle
 Tom & Tammy Butler
 Tom and Sue O'Donnell
 Town Fair Tire Foundation
 Tracy Merrill Davis
 Travelers
 Trisha Mason

Tuckerman Brewing Company
 Twila Palmer
 Tyler Christenson
 United Way of MA Bay
 Vicki & Larry Keryc
 Virgil Sufariu
 W. Bradford Ingalls Charitable
 Foundation
 Walter Boynton
 Wanda Courcelle
 Waterville Consulting
 Wayne Leiss
 Wendy Harsfield
 Wendy Katsekas
 Will Archer
 William & Carrie Weston
 William Archer
 William J. Leaver
 William Kane
 William Meier
 William Poirier
 William Richards
 William Sparks
 Woodstock Pie & Co
 Yan Avlasov

WINTER CHALLENGE FUNDRAISERS

Our volunteers and coaches give not only their time, but they and their families are the backbone of our annual fundraising efforts. We thank them for helping us sustain this wonderful program.

Alan Jette
 Alex Karis
 Andrea Harney
 Beth Conner
 Bex Fillmore
 Bill Madden
 Bob Davis
 Robert Mulhall
 Brait Family
 Brett & Tori Lucas
 Brian Holub
 Bruce Booth
 Team Booth
 Weston Family
 Charlene & Bill Fallon
 Chris Turunen
 Christopher Cummings
 Claudine DeJoie-Stanton
 Colleen Murphy
 Colleen Smith
 Courtney & Andy Holub
 Cummings Family
 Curt and Lily Stevenson
 Cynthia Palfrey
 Dave & Kallie Micalizzi
 Dave Berube
 David Corbett
 Dominic Janssens
 Donna Green

Ed Meltzer
 Elisabetta Costantini
 Emma Lee
 Emma Montgomery
 Hal Sandstrom
 Hannah Drake
 Harrison Keyes
 Ian Clemence-Schreiner
 Jack Daly
 Jackie Cantwell
 Jacob Dixon
 Jeff and Ali Ferrante
 Jerry Lavoie
 Jess Harney
 Jim Bivona
 Joe & Candy Shea
 John & Marcia Imbrescia
 John & Donna Callamarro
 Josh Leidner
 Joyce McGovern
 Todd & Karen Clark
 Karen Fair
 Kari, Don, and Jake Powers
 Kellie and Peter Rowell
 Kurtis Johnson
 Lauren Greer
 Lawrence Wallach
 Margie Gozdoff
 Mary O'Donnell
 Melissa Devine
 Michelle Panarese/Shahen
 Mike McCabe
 Nancy Dorrans
 Nick Conner
 Peter Dixon
 Peter Keller
 Phil & Sue Lembo
 Robert Davis
 Rory McGloin
 Sally Elshout
 Samuel & Brittani Andler
 Sandra Imbrogna
 Sarah Skeels
 Sean Leighton
 Shaun Bogan
 Sonya Hamori
 Stacey Beatty
 Stephanie Manners
 Steve Glad
 Steve Picardo
 Susan Madden
 Tarmy Family
 Cathal & Leonie McGloin
 John & Stephanie Sullivan
 Alexa Sullivan
 The Wise Family
 Tim & Amie Connelly
 Tim Watson
 Tom Jardin
 Tozier Family
 Vance & Kim Perry
 Wendy Katsekas
 Will Waterhouse

A Shared Future of Growth & Possibilities

As we look towards the horizon, the future of New England Disabled Sports is bright and promising. We look forward to expanding our program and community in the years ahead. The exciting development plans for Loon Mountain and Bretton Woods mirrors our ambition to broaden the range and number of winter and summer adaptive sports we offer. Our staff, coaches, volunteers, athletes, and their families form the heartbeat of this journey, each bringing their unique strengths and talents to create a tapestry rich in diversity and resilience. As we venture into new terrains, we see a world of possibilities unfolding—a world where boundaries continue to be broken and every challenge is an opportunity for triumph.

Our donors, the silent yet powerful force behind our endeavors, play a crucial role in this journey of growth and exploration. Your unwavering support fuels our vision, enabling us to reach further and touch more lives. Together, we are not just a community but a family bound by a shared passion for uplifting lives through the transformative power of sport. Our collective efforts have created a foundation strong enough to support the dreams and aspirations of countless individuals. Let us stride forward with the same spirit of determination and unity that has brought us this far, confident in the knowledge that our shared future is one filled with limitless potential and enduring impact. Thank you for being an integral part of our journey.



NEDS @ Loon
39 Loon Brook Road
Lincoln, NH 03251



Bretton Woods

NEDS @ Bretton Woods
99 Ski Area Road
Bretton Woods, NH 03575



How can you help?

You can make a difference too!

Become a volunteer coach. 

Do you want to be part of the fun?

Sign up as a student-athlete. 

Your generosity makes a big difference!

Donate today. 



WHERE BOUNDARIES ARE BROKEN

nedisabledsports.org

✉ info@nedisabledsports.org

☎ 603-745-9333