

Allied Telesyn Product Catalogue Issue 2 | 2003

Only nature can do better.

global overview and success

Allied Telesyn is one of the world's leading networking organisations who provide connectivity and infrastructure solutions for organisations of all sizes. Founded on the premise that there existed a need for simple, yet reliable, standards-based networking products, Allied Telesyn provides a complete range of networking solutions that is unrivalled within the industry today.

Allied Telesyn has an infrastructure which now employs approximately 2,500 full-time employees worldwide with a wide range of experience and expertise in the research, development, sales, support and distribution of its premier networking technologies. The number of full-time employees within the company has grown consistently since 1987 and the company's success and effective business management have allowed it to recruit and hire while many others in the industry have downsized during recent industry downturns.

Allied Telesyn's recent move into providing enterprise networking solutions for organisations has allowed the company to gain ground on more established vendors in the areas of managed Layer 2 and Layer 3 switches, and the company's focus and development in these areas are the reason that many customers are making the transition to Allied Telesyn solutions. Current records show that more than one million customers worldwide have chosen Allied Telesyn technology for their networks. These customers have acquired their products through leading distributors, solution providers, retail marketers or the qualified Allied Telesyn Partner channel.

Allied Telesyn has recently introduced a new company into Europe, Corega.

featured in this issue

SwitchBlade

Multi-layer Modular Switch

page 3

8800 Series

Layer 3-7 Intelligent
Workgroup Switches

page 13

AT-8012M/AT-8026T/AT-8088

Layer 2 Managed Stackable
Fast Ethernet Switches

page 16

AT-WD1008

Gigabit Ethernet CWDM

page 21

NM1000/NM200 Series

DTM Switches

page 23

Telesyn 7000/9000 Series

Multi-service Access Platforms

page 24

AT-AR450S

Medium/Large Enterprise
Security Appliance

page 32

ZTC

Zero Touch Configurator

page 35

AT-WA7500/AT-WA7501

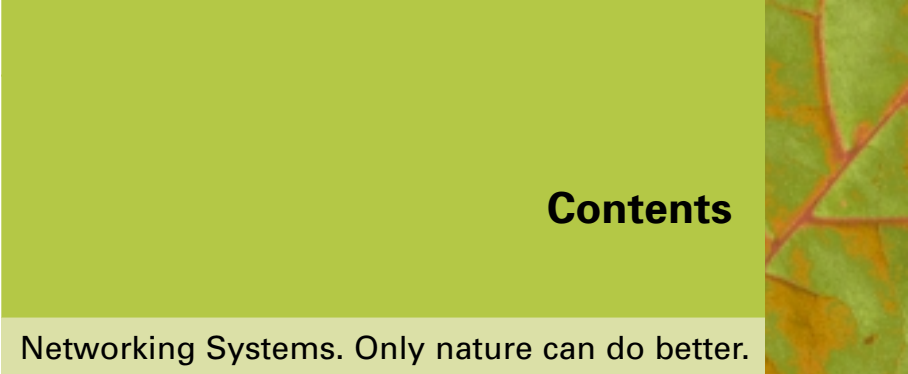
Enterprise Wireless Access
Points

page 45

AT-FS237/AT-FS238

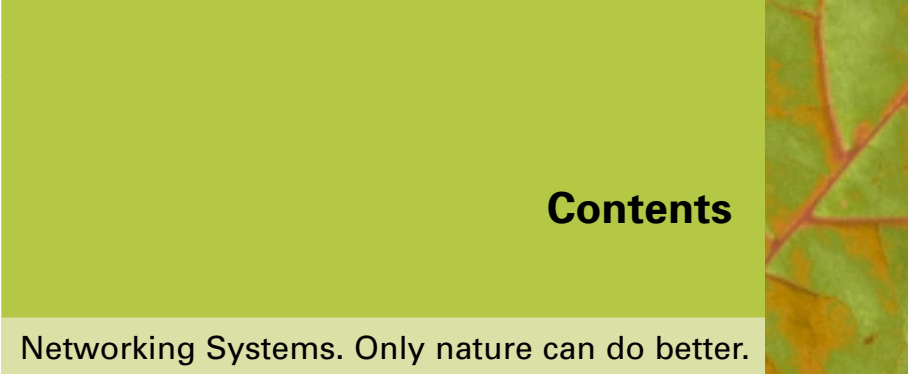
Fast Ethernet Speed/
Media Converting Switches

page 52



Contents

Networking Systems. Only nature can do better.



Contents

Networking Systems. Only nature can do better.

page 1

1

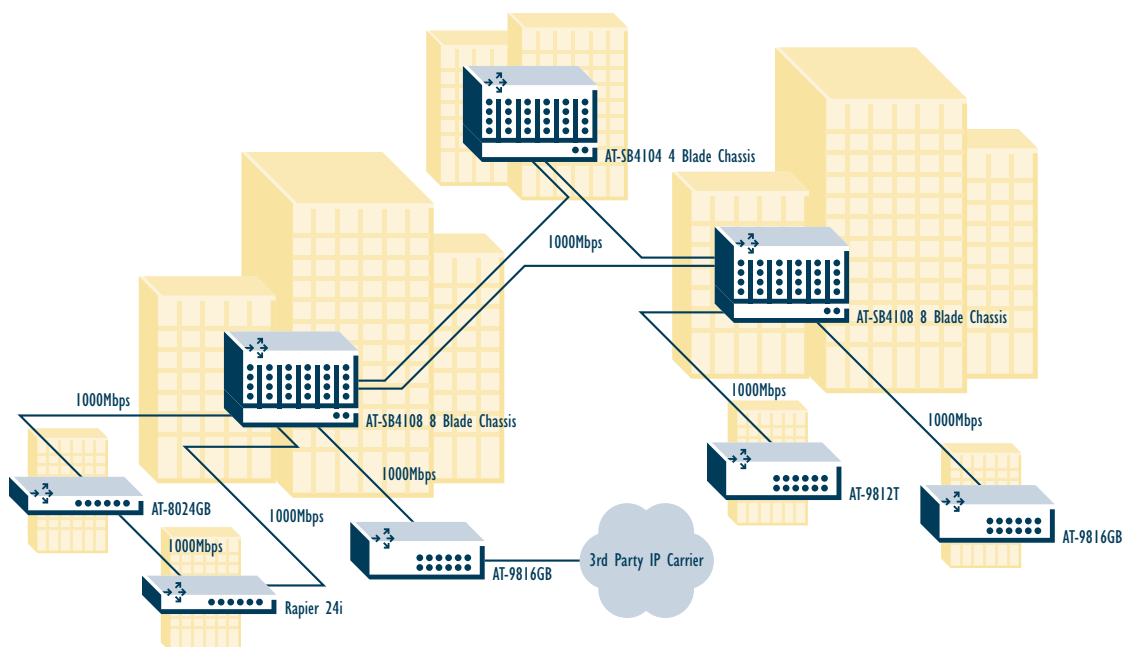
Core Switching with SwitchBlade

Multi-layer Modular Switches

The SwitchBlade SB4100 series, with its versatile modular chassis, is ideal for multiple tenant unit and central point aggregation for Metro Area Networks (MAN) and campus networks, and as an enterprise mid-tier aggregation device. Thanks to very sophisticated multicast and Quality of Service features the SB4100 series also fits perfectly into education and government networks requiring separation of multicast traffic. In addition it provides the perfect solution for utility companies that need to control and monitor their infrastructure, but also wish to offer multimedia services like Voice, Data, Video and Web-Browsing using the same network structure.

The SB4100 series combines hardware-based, wirespeed, non-blocking switching and IP/IPX routing with advanced, flexible Policy-Based Quality of Service, rich multicast support, and a comprehensive set of configuration and control features designed to simplify administration and maintenance tasks. The SB4100 series delivers hardware-based switching for Layer 2, Layer 3, and Layer 4+ with no performance penalty in a wide variety of interface types and feature options.

EXAMPLE: SB4100 SERIES IN A MAN OR CAMPUS NETWORK SETTING



In the scenario above, a Metropolitan Ethernet Provider (MEP) is provisioning an Ethernet service to a number of Multi-Tenant Unit (MTU) complexes. Each complex owner is providing tenants with voice and data services and requires 1000Mbps feeds to each building and rate limited Ethernet service to each tenant. An Allied Telesyn SB4100 series chassis-based switch forms the network backbone in each of the larger MTU complexes, with smaller standalone Layer 3 Gigabit Ethernet switches providing the aggregation from smaller complex buildings.

Also part of the solution, are Allied Telesyn 802.11b wireless solutions for network access, media converters for riser and cross-building connectivity and Layer 2 switches for LAN aggregation.

SWITCHBLADE

Multi-layer Modular Switches

FEATURES & BENEFITS

POWER

Up to 128Gbps of full wirespeed, non-blocking Layer 3, Layer 4+, Filtering & QoS at wirespeed.

MULTI-PROTOCOL

Wirespeed IP, Multicast IP and IPX are complimented with advanced IPv6 and AppleTalk for full multi-protocol capability. Standards-based enhanced VRRP, 802.1w, QoS, and Multicast support ensure interoperability with any similar standards-based products.

EASY TO CONFIGURE

The intuitive and customer friendly GUI interface allows even the most complex of configurations to be achieved easily.

CONTROL

Industry leading QoS features with independent bandwidth and latency control allow multi-faceted tuning of network traffic.

PORT DENSITY

- Up to 256 x 100FX port
- Up to 384 x 10/100TX port
- Up to 64 x 1000X port
- Up to 192 x 10/100/1000T port *

MANAGEMENT FACILITIES

A broad range of SNMP-based management options, allows the user to efficiently and securely access the SB4100 series powerful networking capabilities.

FLEXIBILITY

SB4100 series modular design delivers both reliability and scalability. Line cards offering Fast Ethernet and Gigabit Ethernet (with copper and fibre interface options) can be added or removed to meet growing or changing network requirements.

REDUNDANCY

Uninterrupted performance is ensured through a wide range of redundancy mechanisms and hotswap capability on all cards and modules.

WIDE SUPPORT

Part of a huge family of compatible networking products complimenting all Allied Telesyn network products, providing unbeatable performance and connectivity backed by worldwide technical support network.

* Check with your sales representative for availability

SECURITY

Functions of SSL & SSH are provided. Stateful Inspection Firewall, SMTP Proxy and HTTP Proxy are optional.



HARDWARE FEATURES/ORDERING INFORMATION

8 SLOT OR 4 SLOT CHASSIS CONFIGURATION

	Height	PSU	Switch Controller	10/100TX Max Port	100FX Max Port	1000X Max Port	1000 Max GBIC Port	10/100/1000T
8 slot AT-SB4108	15U	2+1 RPS	Switch Controller only	384 RJ45	256 MT-RJ	64 (SX/LX) SC/MT-RJ	64 (SX, LX, LX25, LX40, LX70)	192 RJ45
4 slot AT-SB4104	9U	1+1 RPS	Switch Controller Bandwidth Expander	192 RJ45	128 MT-RJ	32 (SX/LX) SC/MT-RJ	32 (SX, LX, LX25, LX40, LX70)	96 RJ45

MODEL	DIMENSIONS	WEIGHT
AT-SB4108	62cm x 44cm x 34cm	63.6kg
AT-SB4104	40cm x 44cm x 34cm	36.1kg

POWER SUPPLY

- Power load sharing
- IEC inlets in rear
- 110-240VAC auto-ranging
- Chassis can be converted in the field from AC to DC
- -48VDC

TWO YEAR WARRANTY + 1 YEAR NET.COVER™ BASIC PLUS SUPPORT PROGRAM

SWITCHBLADE

Multi-layer Modular Switch

FEATURES

Standard features include all the features typically required by Enterprise, Education or Government environments

Layer 2

- IEEE 802.1Q, 802.1p, 4096 VLANs
- Port security (MAC inspection)
- Link Aggregation
- GVRP
- IEEE 802.1d & 802.1w (Rapid Spanning Tree)
- IGMP snooping
- Protocol-based VLAN
- MAC address VLAN
- SubNet-based VLAN

Layer 3

- Generic Attribute Registration Protocol (GARP)
- General packet classifier
- Quality of Service
- Point-to-Point Protocol (PPP)
- Internet Protocol (IP)
- IP multicasting
- Open Shortest Path First (OSPF)
- Compression services
- Test facility
- Network Time Protocol (NTP)
- Generic Routing Encapsulation (GRE)
- Trigger facility
- IGMP processing
- ISAKMP
- Logging facility
- Scripting
- Dynamic Host Configuration Protocol (DHCP)
- Layer 2 Tunnelling Protocol (L2TP)
- Simple Network Management Protocol (SNMP)
- Link compression
- IP Security (IPSec) - (future)
- Secure sockets layer
- SSH
- HTTP server
- HTTP client
- TFTP client



The advanced software bundle offers the following features

Full Layer 3 option

- AppleTalk
- RSVP
- DVMRP
- PIM-DM
- PIM-SM

Advanced Layer 3

- IPv6
- BGP4
- OSI (IS-IS)
- Loadbalancing

Security pack

- Stateful Inspection Firewall
- SMTP proxy
- HTTP proxy

SWITCH CONTROLLER

AT-SB4211

Switch Controller

- Hotswap switch controllers
- 128Gbps (full-duplex) Layer 2, 3, 4 wirespeed forwarding/routing engine with 2 switch controllers
- The default Layer 3 address table is 104,000 entries, option available increases default to 232,000 entries
- Management ports:
10/100TX RJ45 and 1 x Async config with RS232 DB9 connector
- CPU core system:
A high-end PowerPC RISC CPU
512KB of non volatile SRAM (NVRAM)

TWO YEAR WARRANTY + 1 YEAR NET.COVER® BASIC PLUS SUPPORT PROGRAM

BANDWIDTH EXPANDER

AT-SB4215

The Bandwidth Expander option for the AT-SB4104 chassis can be installed when a low cost solution is mandatory and non-blocking performance is required, but CPU redundancy is not necessary.
The Expander fits into the second switch controller slot in the AT-SB4104 chassis.

- Only for use with 4 slot chassis AT-SB4104
- 1 x BW Expander max when used with 1 Switch Controller

TWO YEAR WARRANTY + 1 YEAR NET.COVER® BASIC PLUS SUPPORT PROGRAM

MEMORY CARD

AT-SB4261-00

Switch CAM Memory
(AT-SB4211A only)

AT-SB4262-00

Line CAM Memory
(AT-SB44xxA only)

LINE CARDS

- Hotswap capable
- 8 per chassis in AT-SB4108 or 4 per chassis in AT-SB4104
- 16MB packet buffer for traffic bursting absorption

AT-SB4311

10/100TX x 48 ports

AT-SB4352

100FX (MT-RJ) x 32 ports

AT-SB4411A

8 x 10/100/1000T (RJ45) ports

AT-SB4412A

24 x 10/100/1000T (RJ45) ports *

AT-SB4451A

8 x 1000SX (SC) ports

AT-SB4452A

8 x 1000SX (MT-RJ) ports

AT-SB4441A

8 x 1000 GBIC Slot

AT-SB4461A

8 x 1000LX (SC) Slots

AT-SB4462A

8 x 1000LX (MT-RJ) Slots



Our comprehensive service and support plans designed to protect your network investments well into the future.

See pgs 56-60 for details

POWER SUPPLIES

AT-SB4161-30

AC PSU for UK

AT-SB4161-50

AC PSU for UE

AT-SB4161-80

DC PSE -48V

* Check with your sales representative for availability

SWITCHBLADE

Blade Cards & Modules

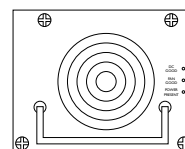


AT-SB4211A
Switch Controller

- Status LEDs
- Ethernet port
- Terminal console port



AT-SB4215
Bandwidth Expander



AT-SB4161
Power Supply Unit

- Status LEDs



AT-SB4411A
Gigabit Ethernet Line Card

- 8 x 110/100/1000T ports
RJ45 connectors with LEDs
- Optional CAM memory
AT-SB4261



AT-SB4451A
Gigabit Ethernet Line Card

- 8 x 1000SX ports
SC connectors with LEDs
- Optional CAM memory
AT-SB4262



AT-SB4452A
Gigabit Ethernet Line Card

- 8 x 1000SX ports
MT-RJ connectors with LEDs
- Optional CAM memory
AT-SB4262



AT-SB4441A
GBIC Line Card

- 8 x 1000 GBIC ports
RJ45 connectors with LEDs
- Optional CAM memory
AT-SB4262



AT-SB4461A
Gigabit Ethernet Line Card

- 8 x 1000LX ports
SC connectors with LEDs
- Optional CAM memory
AT-SB4262



AT-SB4462A
Gigabit Ethernet Line Card

- 8 x 1000LX ports
MT-RJ connectors
- Optional CAM memory
AT-SB4262



AT-SB4311
Fast Ethernet Line Card

- 48 x 10/100TX ports
RJ45 connectors with LEDs



AT-SB4352
Fast Ethernet Line Card

- 32 x 100FX ports
MT-RJ fibre connectors with LEDs



AT-SB4261
Switch CAM Memory
(AT-SB4211A only)



AT-SB4262
Line CAM Memory
(AT-SB424xx only)

2

Switches

The Allied Telesyn family of Switches delivers versatile, highly resilient Gigabit to Fast Ethernet switching with advanced multi-layer capabilities for demanding network core configurations and aggregation of edge switches. Our current switches address today's heterogeneous networks - from the smallest small business network to large enterprise LANS - and facilitate their growth by offering numerous options.

LAYER 2 ETHERNET

Allied Telesyn's full range of standalone and stackable Layer 2 hubs and switches go from 10Mbps to 1Gbps, offering scalable network bandwidth to manage data, voice, and video traffic across the network. Copper and fibre models in unmanaged or intelligent versions can be used to build dependable networks.

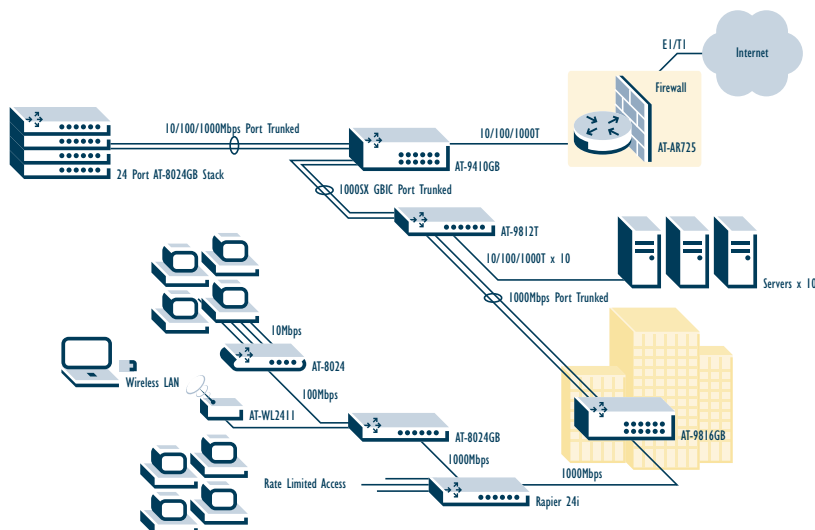
LAYER 3-7 NETWORKING TECHNOLOGY

Allied Telesyn's standalone and chassis-based Layer 3 switch/router solutions are designed to provide high performance, multi-layer switching platforms for desktop, workgroup and core connectivity at speeds up to 1Gbps. The Rapier 24i switch is the only Layer 3 switch on the market that can aggregate E1 and E3 circuits into Ethernet with rate limiting capability.

GIGABIT ETHERNET

As high-speed Gigabit Ethernet continues to spread from the LAN into the data centre and out to the network service provider, Ethernet will become even more pervasive, with accelerated adoption expected in almost every market. Allied Telesyn's Gigabit Ethernet capabilities are considerable and fast growing, offering exceptionally high performance, reliability and price/performance.

EXAMPLE: 9800 SERIES CORE APPLICATION EXAMPLE



The network core of a medium-sized company is built around the 9800 series of Layer 3+ Gigabit Ethernet standalone switches. As well as acting as the primary aggregator for a stack of high-density Fast Ethernet Layer 2 switches and other Layer 2 and Layer 3 workgroup devices, a second 9800 series switch also aggregates the business's considerable server farm capacity.

With a 32Gbps switching fabric and throughput capacity able to handle the most demanding applications, a 9800 series multi-layer Gigabit switch delivers exceptional forwarding performance at both Layer 2 and Layer 3. VLANs can be created from any port using standards-based 802.1Q tagging or Allied Telesyn's highly programmable flow based classifier, enabling policy based service level agreements (SLA) to limit maximum bandwidth or guarantee minimum throughput in 64kbps increments. Port aggregation allows the creation of Gigabit trunk groups, resulting in greater fault tolerance and significantly increased bandwidth among switches, routers and individual servers.

SWITCH SELECTOR

MULTI-LAYER SWITCHES

1000Mbps & 1000Mbps copper > > >

AT-9812T

10/100/1000T x 12 ports, GBIC bays x 4

8

1000Mbps > > >

AT-9816GB

GBIC bays x 16

8

LAYER 3 SWITCHES

1000Mbps fibre > > >

Rapier G6f

1000SX or 1000LX x 6 ports (SC), Expansion bays x 2

10

1000Mbps copper > > >

Rapier G6

10/100/1000T x 6 ports, Expansion bays x 2

10

100Mbps fibre > > >

Rapier 16fi > > >

100FX x 16 ports (SC or MT-RJ), Expansion bays x 2
Supports Network Service Module (NSM)

11

10/100Mbps copper > > >

Rapier 24i > > >

10/100TX x 24 ports, Expansion bays x 2
Supports Network Service Module (NSM)

11

Rapier 48i

10/100TX x 48 ports, Expansion bays x 2

11

LAYER 3-7 SWITCHES

10/100Mbps copper > > >

AT-8824

10/100TX x 24 ports Fast Ethernet, GBIC bays x 2

13

AT-8848

10/100TX x 48 ports Fast Ethernet, GBIC bays x 2

13

LAYER 2-4 SWITCHES

10/100Mbps copper > > >

AT-8724XL

10/100TX x 24 ports, Expansion bays x 2

14

AT-8748XL

10/100TX x 48 ports, Expansion bays x 2

14

LAYER 2 MANAGED STACKABLE SWITCHES

1000Mbps & 10/100Mbps copper > > >

AT-8324

10/100TX x 24 ports, Expansion bays x 2

17

AT-8326GB

10/100TX x 24 ports, 10/100/1000T x 2 ports, GBIC bays x 2

17

AT-8350GB > > >

10/100TX x 48 ports, 10/100/1000T x 2 ports
GBIC bays x 2, Expansion bay x 1

17

1000Mbps & 10/100Mbps copper & 10/100Mbps fibre > > >

AT-8400 > > >

10/100TX up to 96 ports
100FX up to 48 ports
10FL up to 48 ports
1000T up to 12 ports
1000FX up to 12 ports

15

100Mbps fibre > > >

AT-8016F/MT
AT-8016F/SC

100FX (MT-RJ) x 16 ports, Expansion bays x 2
100FX (SC) x 16 ports, Expansion bays x 2

16

10/100Mbps copper > > >

AT-8012M
AT-8024GB
AT-8024M
AT-8024
AT-8026FC
AT-8026T

10/100TX x 24 ports, Expansion bay x 1
10/100TX x 24 ports, GBIC bays x 2
10/100TX x 24 ports, Expansion bays x 2
10/100TX x 24 ports
10/100TX x 24 ports, 100FX (SC) x 2 ports
10/100TX x 24 ports, 10/100/1000T x 2 ports

16

16

16

16

16

16

10/100Mbps copper & 100Mbps fibre > > >

AT-8088/SC
AT-8088/MT

10/100TX x 8 ports, Expansion bays x 2
10/100TX x 8 ports, 100FX (MT-RJ) x 8 ports, Expansion bays x 2

16

16

LAYER 2 MANAGED SWITCHES

10/100/1000Mbps copper > > >

AT-9410GB

10/100/1000T x 10 ports, GBIC bays x 2

18

100Mbps fibre > > >

AT-8216FXL/SC
AT-8216FXL/MT

100FX (SC) x 16 ports, Expansion bays x 2
100FX (MT-RJ) x 16 ports, Expansion bays x 2

18

18

10/100Mbps copper > > >

AT-8224XL

10/100TX x 24 ports, Expansion bays x 2

18

LAYER 2 UNMANAGED SWITCHES

10/100Mbps copper with external power supply > > >

AT-FS705L
AT-FS705LE
AT-FS708LE
AT-FS716E

10/100TX x 5 ports, external power supply
10/100TX x 5 ports, external power supply
10/100TX x 8 ports, external power supply
10/100TX x 16 ports, external power supply

19

19

19

19

10/100Mbps copper with fibre uplink & external power supply > > >

AT-FS705EFC
AT-FS709EFC

10/100TX x 4 ports, 100FX (SC) x 1 port, external power supply
10/100TX x 8 ports, 100FX (SC) x 1 port, external power supply

19

19

10/100Mbps copper with fibre uplink > > >

AT-FS709FC
AT-FS713FC
AT-FS717FC

10/100TX x 8 ports, 100FX (SC) x 1 port
10/100TX x 12 ports, 100FX (SC) x 1 port
10/100TX x 16 ports, 100FX (SC) x 1 port

19

19

19

10/100Mbps copper > > >

AT-FS708
AT-FS716
AT-FS724i

10/100TX x 8 ports
10/100TX x 16 ports
10/100TX x 24 ports

19

19

19

LAYER 2 UNMANAGED GIGABIT SWITCHES

10/100/1000Mbps copper > > >

AT-GS908
AT-GS908GB
AT-GS924

10/100/1000TX x 8 ports
10/100/1000TX x 8 ports, GBIC bays x 2 ports
10/100/1000TX x 24 ports

19

19

19

9800 Series

Multi-layer Switches



AT-9812T 10/100/1000T x 12 ports
GBIC bays x 4

AT-9816GB GBIC bays x 16



Common features of the 9800 series

- 32Gbps non-blocking switch fabric
- Wirespeed IP and IPX routing (Layer 3 & 4)
- Wirespeed forwarding at Layer 2
- IPV6 support
- AppleTalk routing
- CoS (Class of Service)
- Wirespeed multicasting services
- Up to 232,000 Layer 2 or Layer 3 address entries
- Bandwidth limiting (64KB increments)
- DiffServ
- IEEE 802.1p prioritisation
- Port trunking
- IEEE 802.1x
- 4096 VLANs
- Wirespeed QoS
- Loadbalancing (optional)
- 350MHz CPU
- 128/256 SDRAM
- 32/128 Flash
- Compact Flash Socket for operational cost reduction
- 1.5 U chassis height
- Stateful Inspection Firewall
- Auto-ranging 100-240vAC
- -48vDC power supply option * (factory installed)
- Graphical User Interface
- Redundant power supply option

TWO YEAR WARRANTY + 1 YEAR NET.COVER™ BASIC PLUS SUPPORT PROGRAM

* Check with your sales representative for availability

Allied Telesyn standards-based Gigabit Interface Converter (GBIC) modules

AT-G8T	1000T x 1 port	100m
AT-G8SX	1000SX x 1 port	550m
AT-G8LX10	1000LX x 1 port	10km
AT-G8LX25	1000LX x 1 port	25km
AT-G8LX40	1000LX x 1 port	40km
AT-G8LX70	1000LX x 1 port	70km



9800 series expansion modules

AT-RPS9000	Chassis for up to four redundant power supplies, including one power supply
AT-PWR9000	Additional redundant power supply with cable

MODEL	DIMENSIONS	WEIGHT
AT-9812T	44cm x 36cm x 6.6cm	6.6kg
AT-9816GB	44cm x 36cm x 6.6cm	6.6kg

Uncompromised performance

32Gbps of Layer 2 and Layer 3 throughput delivers the power to run at full wirespeed non-blocking without compromise (all packet sizes).

Traffic management

Industry leading QoS features with independent bandwidth and latency control allow multi-faceted tuning of network traffic. Minimum and maximum bandwidth limiting in 64kbps increments and low latency for voice applications operating at wirespeed.

Multi-protocol service

Wirespeed IPv4 and IPX are complimented with advanced IPv6 and AppleTalk for full multi-protocol capability. Many routing protocols RIPv1/v2, OSPFv2, BGP4, IS-IS, VRRP, IGMP, DVMRP, PIM-DM/SM ensuring operation within almost any architecture.

Exceptional flexibility

Port flexibility through GBIC modules, Standard Spanning Tree Protocol or Rapid STP (802.1w), large combinations of port trunking options, 4096 VLANs which can be explicitly tagged or internally defined based on a wide variety of packet classifications.

Ease of operations

Unmatched set of tools to assist in management including DHCP client or server, built-in e-mail client, and an advanced set of triggers all accessed through a secure, intuitive, customer friendly GUI interface with SNMP and extensive MIB support.

FEATURES

Standard features include all the features typically required by Enterprise, Education, Government or Service Provider environments

Layer 2

- IEEE 802.1Q, 802.1p, 4096 VLANs
- Port security (MAC inspection)
- Link Aggregation
- GVRP
- IEEE 802.1d & 802.1w (Rapid Spanning Tree)
- IGMP snooping
- Protocol-based VLAN
- MAC address VLAN
- SubNet-based VLAN

Layer 3

- Generic Attribute Registration Protocol (GARP)
- General packet classifier
- Quality of Service
- Point-to-Point Protocol (PPP)
- Internet Protocol (IP)
- IP multicasting
- Open Shortest Path First (OSPF)
- Compression services
- Test facility
- Network Time Protocol (NTP)
- Generic Routing Encapsulation (GRE)
- Trigger facility
- IGMP processing
- ISAKMP
- Logging facility
- Scripting
- Dynamic Host Configuration Protocol (DHCP)
- Layer 2 Tunnelling Protocol (L2TP)
- Simple Network Management Protocol (SNMP)
- Link compression
- IP Security (IPSec) - (future)
- Secure sockets layer
- SSH
- HTTP server
- HTTP client
- TFTP client

The advanced software bundle offers the following features

Full Layer 3 option

- AppleTalk
- RSVP
- DVMRP
- PIM-DM
- PIM-SM
- VRRP

Advanced Layer 3

- IPv6
- BGP4
- OSI (IS-IS)
- Loadbalancing

Security pack

- Stateful Inspection Firewall
- SMTP proxy
- HTTP proxy

RAPIER 'G' Series

Layer 3 Gigabit Ethernet Switches



Rapiere G6

10/100/1000T x 6 ports

Expansion bays x 2

(Part # AT-RPG6)

Rapiere G6f

1000SX or 1000LX x 6 ports (SC)

Expansion bays x 2

(SX Part # AT-RPG6FSX)

(LX Part # AT-RPG6FLX)

Common features of the Rapiere 'G' series

- Wirespeed IP Layer 3 routing performance
- 35Gbps non-blocking switch fabric for low latency

Common features of the entire Rapiere™ series

- Expansion bays x 2
- High-performance 200MHz RISC-based processor
- Non-blocking Layer 2 switching performance
- 8,000 Layer 2 addresses
- 2,000 Layer 3 addresses
- IEEE 802.1Q VLAN tagging
- IEEE 802.1p QoS (4 priority queues)
- IEEE 802.1x
- IP RIPv1/v2, OSPFv2
- Real-time application
- VRRP (Virtual Router Redundancy Protocol)
- Console, Telnet, Web-browser, SSH, SNMP and RMON
- Universal 100-240VAC, 50/60Hz power supply
- Stateful Inspection Firewall option
- -48VDC power supply option (factory installed)
- Redundant power supply option
- 1.5 U, 19" rackmount chassis

TWO YEAR WARRANTY + 1 YEAR NET.COVER® BASIC PLUS SUPPORT PROGRAM

Rapiere 'G' & 'i' series expansion modules

AT-A35SX	1000SX x 1 port (SC)
AT-A35LX	1000LX x 1 port (SC)
AT-A39T	1000T x 1 port
AT-A40	100FX multi-mode x 1 port (SC or MT-RJ)
AT-A41	100FX single-mode x 1 port (SC or MT-RJ)
AT-A42	GBIC bay x 1 port *

Rapiere 'G' & 'i' series redundant power modules

AT-RPS8000	4 slot redundant power supply chassis including one power supply
AT-PWR8000	Additional redundant power supply with cable

* Uses Allied Telesyn standards-based GBIC modules



AlliedWare™

The Rapiere 'G' series ship with Basic Layer 3 software. Full Layer 3, Advanced Layer 3 and Security pack option available. Please see technical specification details and ordering p/n on page 42.

Allied Telesyn standards-based Gigabit Interface Converter (GBIC) modules **

AT-G8T	1000T x 1 port	100m
AT-G8SX	1000SX x 1 port	550m
AT-G8LX10	1000LX x 1 port	10km
AT-G8LX25	1000LX x 1 port	25km
AT-G8LX40	1000LX x 1 port	40km
AT-G8LX70	1000LX x 1 port	70km

** AT-A42 required



Rapiere™

NSM AT-AR040

AT-AR020
1 x PRI portAT-AR021
1 x BRI port

Our comprehensive service and support plans designed to protect your network investments well into the future.

See pgs 56-60 for details

MODEL	DIMENSIONS	WEIGHT
Rapiere 'G' series	44cm x 36cm x 6.6cm	5.5kg

RAPIER 'i' Series

Layer 3 Fast Ethernet Switches

Rapier 'i' series Port Interface Cards (PICs)

AT-AR020	E1/T1 PRI with integral CSU/DSU x 1 port
AT-AR021	BRI x 1 port (U & S/T)
AT-AR023	Sync x 1 port (E1, T1)
AT-AR024	Async (RS232) x 4 ports (4 x 115kbps)
AT-AR027	VoIP (FXS)

Rapier 'i' series license options

AT-3DES	Triple DES/SW - requires encryption card
---------	--

Rapier 'i' series Port Accelerator Card (PAC)

AT-AR061	Encryption DES, 3DES & HMAC +Compression high performance card
----------	---

Rapier 24i and Rapier 16fi

Network Service Module (NSM)

AT-AR040	NSM for 4 PICs (only 2 x E1/T1 supported)
----------	---

Rapier 16fi *

100FX x 16 ports (SC or MT-RJ)
Expansion bays x 2
Supports Network Service Module (NSM)
(SC Part # AT-RP16FiSC)
(MT-RJ Part # AT-RP16FiMT)

Rapier 24i

10/100TX x 24 ports
Expansion bays x 2
Supports Network Service Module (NSM)
(Part # AT-RP24i)

Rapier 48i

10/100TX x 48 ports
Expansion bays x 2
(Part # AT-RP48i)



Features

- Wirespeed IP Layer 3 routing performance
- 9.6Gbps or 19.2Gbps switch fabric
- Slide-in Network Service Module (NSM) - (Excludes AT-RP48i)
- E1, T1, BRI, Sync, Async and WAN media options
- L2TP, IPSEC VPNs
- Bandwidth limiting
- 255 VLANs
- VoIP access (Rapier 24i)

Common features of the entire Rapier™ series

- Expansion bays x 2
- High-performance 200MHz RISC-based processor
- Non-blocking Layer 2 switching performance
- 8,000 Layer 2 addresses
- 2,000 Layer 3 addresses
- IEEE 802.1Q VLAN tagging
- IEEE 802.1p QoS (4 priority queues)
- IP RIPv1/v2, OSPFv2
- IEEE 802.1x
- VRRP (Virtual Router Redundancy Protocol)
- Console, Telnet, Web-browser, SSH, SNMP and RMON
- Universal 100-240vAC, 50/60Hz power supply
- Stateful Inspection Firewall option
- -48vDC power supply option (factory installed)
- Redundant power supply option
- 1.5 U, 19" rackmount chassis
- VPN IPSEC/ISAKMP option (Rapier 24i)

TWO YEAR WARRANTY + 1 YEAR NET.COVER® BASIC PLUS SUPPORT PROGRAM

AlliedWare™

The Rapier 'i' series ship with Basic Layer 3 software. Full Layer 3, Advanced Layer 3 and Security pack option available. Please see technical specification details and ordering p/n on page 42.



AT-AR024
4 x Async ports

AT-AR023
1 x Sync port

MODEL	DIMENSIONS	WEIGHT
Rapier 'i' series	44cm x 36cm x 6.6cm	5.5kg



Our comprehensive service and support plans designed to protect your network investments well into the future.
See pgs 56-60 for details

Intelligent Workgroup Switches

The 8800 series Intelligent Workgroup Switches deliver high performance switching in a compact IRU form factor. Available with either 24 or 48 10/100TX Fast Ethernet ports, both models offer full wirespeed switching and IP routing, with two optional Gigabit Ethernet uplink ports and redundant power supply.

The features of the 8800 series Intelligent Workgroup Switches make it the perfect choice for your workgroup applications, incorporating ease of management, high bandwidth, proven security and traffic prioritisation in a slimline IRU chassis. Ideal for environments like enterprise and educational institutions demanding reliable, high bandwidth Ethernet for services such as web conferencing and live video streaming. Prioritisation of data streams with QoS ensures that mission critical traffic will enter the fastest queue. Combining this with the Stateful Inspection Firewall, your network will remain safe and secure. Top all this off with our intuitive GUI, which allows for quick and painless configuration and management.

The 8800 series Intelligent Workgroup Switches have asymmetric bidirectional bandwidth limiting, per port or per QoS traffic class. Bandwidth limiting lets you define throughput levels on an individual client basis. For example, you may want to assign more bandwidth to a campus library than student accommodation. Delivering an industry-leading implementation of this feature, the 8800 series Intelligent Workgroup Switches provide the finest bandwidth granulation available in Layer 3 products.

The Quality of Service (QoS) feature allows you to prioritise traffic according to its importance. You can be assured of reliable performance during peak usage periods, and continuous transmission of streaming media.



8800 Series

Layer 3 - 7

Intelligent Workgroup Switches



AT-8824 10/100TX x 24 ports Fast Ethernet
GBIC bays x 2

AT-8848 10/100TX x 48 ports Fast Ethernet
GBIC bays x 2

Common features of the 8800 series

- Half/full-duplex
- Auto-negotiation
- Auto MDI/MDI-X
- Wirespeed IP (Layer 3)
- Wirespeed forwarding at Layer 2
- IRU
- Bandwidth limiting
- Broadcast and multicast traffic control
- 2,000 Layer 3 addresses
- 8,000 Layer 2 MAC
- 255 VLANs
- IEEE 802.1Q VLAN tagging
- IEEE 802.1p QoS (4 priority queues)
- IEEE 802.1x
- TACACS+
- L2TP
- IP RIPv1/v2 and RIPv2
- OSPF v2
- VRRP
- IEEE 802.1s
- Private VLAN
- VLAN relay
- Stateful Inspection Firewall option
- IPSec VPN Optional
- BGP4 option
- IPv6 option
- Loadbalancing option
- Redundant power supply option
- 400MHz Processor
- 128KB Non-volatile Storage (battery backed SRAM)
- Up to 256MB of SDRAM memory on DIMM
- 32MB of FLASH memory (expandable to 32MB for future upgrades)
- Console Port

LIFETIME LIMITED WARRANTY + 1 YEAR NET.COVER® BASIC PLUS SUPPORT PROGRAM

* Check with your sales representative for availability

Allied Telesyn standards-based Gigabit Interface Converter (GBIC) modules

AT-G8T	1000T x 1 port	100m
AT-G8SX	1000SX x 1 port	550m
AT-G8LX10	1000LX x 1 port	10km
AT-G8LX25	1000LX x 1 port	25km
AT-G8LX40	1000LX x 1 port	40km
AT-G8LX70	1000LX x 1 port	70km



8800 series redundant power modules

AT-RPS8000	4 slot redundant power supply chassis including one power supply
AT-PWR8000	Additional redundant power supply with cable



MODEL	DIMENSIONS	WEIGHT
8800 series	44cm x 33cm x 4.5cm	5kg



Our comprehensive service and support plans designed to protect your network investments well into the future.
See pgs 56-60 for details

8700XL Series

Layer 2 - 4 Switches



AT-8724XL

10/100TX x 24 ports
Expansion bays x 2

AT-8748XL

10/100TX x 48 ports
Expansion bays x 2

Common features of the 8700XL series

- Full QoS for multi-media and realtime applications
- Wirespeed Layer 4+ filtering
- Wirespeed Layer 2 switching
- Classifiers
- Wirespeed Layer 3 IP routing
- Support up to 255 VLANs
- Broadcast Storm Protection
- 8,000 MAC addresses
- Buffer memory 4MB
- Private VLANs
- Bandwidth limiting
- IP RIPv1/v2, OSPFv2
- Rapid Spanning Tree protocol
- VRRP (Virtual Router Redundancy Protocol)
- GARP
- IEEE 802.1x *
- Triggers
- SSH
- SSL
- GUI Web interface
- Auto-negotiation speed and duplex ports
- Auto MDI/MDI-X
- Redundant power supply option
- 1.5 U, 19" rackmount chassis
- Expansion bays x 2

TWO YEAR WARRANTY + 1 YEAR NET.COVER® BASIC PLUS SUPPORT PROGRAM

* Check with your sales representative for availability

8700XL series expansion modules

AT-A35SX	1000SX x 1 port (SC)
AT-A35LX	1000LX x 1 port (SC)
AT-A39T	100/1000T x 1 port
AT-A40	100FX multi-mode x 1 port (SC or MT-RJ)
AT-A41	100FX single-mode x 1 port (SC or MT-RJ)
AT-A42	GBIC bay x 1 port **

8700XL series redundant power modules

AT-RPS8000	4 slot redundant power supply chassis including one power supply
AT-PWR8000	Additional redundant power supply with cable

** Uses Allied Telesyn standards-based GBIC modules



Allied Telesyn standards-based Gigabit Interface Converter (GBIC) modules ***

AT-G8T	1000T x 1 port	100m
AT-G8SX	1000SX x 1 port	550m
AT-G8LX10	1000LX x 1 port	10km
AT-G8LX25	1000LX x 1 port	25km
AT-G8LX40	1000LX x 1 port	40km
AT-G8LX70	1000LX x 1 port	70km

*** AT-A42 required



QUALITY OF SERVICE FEATURES

- IEEE 802.1p
- Support for IEEE 802.1p override at ingress
- Weighted Round Robin queueing algorithm
- 4 priority queues per port
- DiffServ
- IP Type of Service
- Classification, policing/metering, and marking functions on a per-port basis at ingress and queueing/scheduling function at egress
- QoS classification of incoming packets for QoS

PORT SECURITY FEATURES

- User selectable value of threshold per port
- User selectable Limited Mode or Secure Mode per port
- User selectable Disable/Enable Intrusion Detection, per port
- Intrusion Detection
 - Notify with trap and disable the port
 - Notify with trap only
 - Disable the port only
 - No action
- Save all statically assigned entries on disable action

CLASSIFICATION

- Source IP address
- Source MAC address
- Destination MAC address
- 16-bit ethertype classification

MULTICAST

- IGMP
- IGMP snooping
- IGMP proxy
- MVR

BANDWIDTH LIMITING

- Down to 64kbps ingress
- Down to 1Mbps egress

LAN FEATURES

- Port based VLAN
- IEEE 802.1Q tagged VLAN
- VLAN Pass through support
- Overlapping VLAN
- Private VLAN
- VLAN Relay

MODEL	DIMENSIONS	WEIGHT
8700XL series	44cm x 36cm x 6.6cm	5.5kg

Enhance your network ENHANCED STACKING™

This new technology gives network managers a flexible tool that enables them to manage multiple switches (24), placed in multiple locations, with a single IP address.

In traditional stacking technology each switch in a stack requires to be located close to each other. These stacks are generally limited to four or six switches and stacking modules are often needed. When reconfiguring is required, traditional stacking often requires a time-consuming effort.

ENHANCED STACKING™ technology has no requirement for the switches to be located near to each other and it can support up to 24 switches within a single broadcast domain. The stacking functionality is housed in the software and it makes reconfigurations fast and simple. Using the familiar Telnet interface, network managers can quickly designate virtual stacks of switches with redundant master switches.

8400 Series

Layer 2 Managed Stackable Fast Ethernet Switch



AT-8400

13 slot mini chassis

10/100TX up to 96 ports

100FX up to 48 ports

10FL up to 48 ports

1000T up to 12 ports

1000FX up to 12 ports

System Configuration

- 13 slot modular chassis
- 12 line blade slots
- 1 Switch Fabric/Management slot
- 2 redundant power supply slots (AC)
- 2 Replaceable Fan Trays
- Fully Hot-swappable
- 2 Redundant DC power supply (requires 8400 - DC chassis)

Features

- Wirespeed Switching on all Ethernet ports
- 24Gbps non-blocking Crossbar switch fabric
- 17.8Mpps total Throughput
- Wirespeed Local Switching
- Head-of-Line blocking prevention
- Low latency
 - <40 microsec at 10Mbps
 - <20 microsec at 100Mbps
 - <10 microsec at 1000Mbps
- 255 VLANs
- 8,000 MAC addresses

LIFETIME LIMITED WARRANTY + 3 YEAR NET.COVER® BASIC PLUS SUPPORT PROGRAM

Two years on PSU

* Check with your sales representative for availability

Line Card options

AT-8401	Switch fabric/Management card
AT-8411	10/100TX x 8 ports
AT-8413	10/100/1000T or 1000X x 1 port
AT-8412/SC	100FX x 4 ports (SC)
AT-8412/MT	100FX x 4 ports (MT-RJ)
AT-8414	10FL x 4 ports (SC) *

Features

- Enhanced Stacking™
- Web, CLI, Telnet, Serial
- SNMP v1 & v2
- IEEE 802.1p Class of Service
- IEEE 802.1x port-based Network Access Control
- TACACS+
- RADIUS

MODEL	DIMENSIONS	WEIGHT
AT-8400	30.5cm x 43.5cm x 15.6cm	13kg



Our comprehensive service and support plans designed to protect your network investments well into the future.
See pgs 56-60 for details

ENHANCED STACKING™

8000 Series

Layer 2 Managed Stackable Fast Ethernet Switches



AT-8012M	10/100TX x 24 ports Expansion bays x 1
AT-8016F/SC	100FX (SC) x 16 ports Expansion bays x 2
AT-8016F/MT	100FX (MT-RJ) x 16 ports Expansion bays x 2
AT-8024GB	10/100TX x 24 ports GBIC bays x 2
AT-8024M	10/100TX x 24 ports Expansion bays x 2
AT-8024	10/100TX x 24 ports
AT-8026FC	10/100TX x 24 ports 100FX (SC) x 2 ports
AT-8026T	10/100TX x 24 ports 10/100/1000T x 2 ports
AT-8088/SC	10/100TX x 8 ports 100FX (SC) x 8 ports Expansion bays x 2
AT-8088/MT	10/100TX x 8 ports 100FX (MT-RJ) x 8 ports Expansion bays x 2

Common features of the 8000 series

- 9.6Gbps switch fabric
- 32 VLAN support
- Non-blocking
- Wirespeed forwarding
- Enhanced Stacking™ up to 624 ports
- Port security
- IGMP snooping
- Features Web-based management & SNMP
- IEEE 802.1Q VLAN tagging
- IEEE 802.1p Class of Service
- -48VDC power supply option (AT-8024M & AT-8016F)
- Redundant power supply option (AT-8024M & AT-8016F)

LIFETIME LIMITED WARRANTY + 3 YEAR NET.COVER® BASIC PLUS SUPPORT PROGRAM

Five years on PSU

AT-8024M and AT-8016F expansion modules

AT-A45/SC	100FX x 1 port (SC)
AT-A45/MT	100FX x 1 port (MT-RJ)
AT-A46	10/100/1000T x 1 port
AT-A47	GBIC bay x 1 port *

* Uses Allied Telesyn standards-based GBIC modules
Use with AT-G8SX



Our comprehensive service and support plans designed to protect your network investments well into the future.

See pgs 56-60 for details

MODEL	DIMENSIONS	WEIGHT
8000 series	44cm x 19cm x 4.5cm	2.7kg
AT-8012M	44cm x 21cm x 4.4cm	2.2kg
AT-8088	44cm x 19cm x 4.4cm	3.5kg

8300 Series

Layer 2 Managed Stackable Fast Ethernet Switches

**AT-8324**

10/100TX x 24 ports
Expansion bays x 2

Features

- Mix copper & fibre in a stack
- 802.1Q VLAN tagging
- 802.1p Class of Service
- IGMP snooping
- Enhanced Stacking™ not supported
- Features Web-based management & SNMP
- Stackable up to 4

LIFETIME LIMITED WARRANTY + 3 YEAR NET.COVER® BASIC PLUS SUPPORT PROGRAM

Five years on PSU

AT-8326GB

10/100TX x 24 ports
10/100/1000T x 2 ports
GBIC bays x 2

AT-8350GB

10/100TX x 48 ports
10/100/1000T x 2 ports
GBIC bays x 2
Expansion bay x 1

Features

- Stack up to 144 ports
- Up to 256 VLANs

Common features of the 8300 series

- Non-blocking
- Wirespeed forwarding
- IEEE 802.1Q VLAN tagging
- IEEE 802.3ad Link Aggregation
- IEEE 802.1p Prioritisation
- Enhanced Stacking™ not supported
- Redundant power supply option (AT-8350GB only)

LIFETIME LIMITED WARRANTY + 3 YEAR NET.COVER® BASIC PLUS SUPPORT PROGRAM

Five years on PSU

**AT-8350GB expansion modules**

AT-A48/SC	100FX x 2 ports (SC)
AT-A48/MT	100FX x 2 ports (MT-RJ)
AT-A49	10/100/1000T x 2 ports

AT-8350GB redundant power modules

AT-RPS2001	Single redundant power supply for AT-8350GB
AT-RPS2004	Redundant power supply for four AT-8350GB

**Allied Telesyn standards-based****Gigabit Interface Converters (GBIC) modules**

AT-G8T	1000T x 1 port	100m
AT-G8SX	1000SX x 1 port	550m
AT-G8LX10	1000LX x 1 port	10km
AT-G8LX25	1000LX x 1 port	25km
AT-G8LX40	1000LX x 1 port	40km
AT-G8LX70	1000LX x 1 port	70km

8300 series redundant power modules

AT-RPS3004	Chassis for up to four redundant power supplies, including one power supply
AT-PWR3001	Additional redundant power supply with cable

MODEL	DIMENSIONS	WEIGHT
8300 series	44cm x 36cm x 6.6cm	5.5kg

AT-9410GB

Layer 2 Managed Gigabit Ethernet Switch

AT-9410GB

10/100/1000T x 10 ports
GBIC bays x 2



Features

- 24Gbps switch fabric
- Non-blocking
- Wirespeed forwarding
- Up to 256 VLANs
- IEEE 802.1Q VLAN tagging
- IEEE 802.3ad Link Aggregation
- IEEE 802.1p Prioritisation

LIFETIME LIMITED WARRANTY + 3 YEAR NET.COVER® BASIC PLUS SUPPORT PROGRAM

Five years on PSU

8200XL Series

Layer 2 Managed Fast Ethernet Switches

AT-8216FXL/MT

100FX (MT-RJ) x 16 ports
Expansion bays x 2

AT-8216FXL/SC

100FX (SC) x 16 ports
Expansion bays x 2

AT-8224XL

10/100TX x 24 ports
Expansion bays x 2



Features

- 13.3Gbps switch fabric
- Non-blocking
- Wirespeed forwarding
- 255 VLANs
- IEEE 802.1Q VLAN tagging
- IEEE 802.1p Class of Service
- IGMP snooping
- Features Web-based management & SNMP

LIFETIME LIMITED WARRANTY + 3 YEAR NET.COVER® BASIC PLUS SUPPORT PROGRAM

(AT-8224XL only)

Five years on PSU

AT-8324 and 8200XL series expansion modules

AT-A14	100/1000T x 1 port
AT-A15/SX	1000SX x 1 port (SC)
AT-A15/LX	1000LX x 1 port (SC)
AT-A16	100FX x 2 ports (VF-45)
AT-A17	100FX x 2 ports (SC)
AT-A17LX	100LX x 2 ports (SC)
AT-A18	10/100TX x 4 ports (RJ45)
AT-A19	100FX x 2 ports (MT-RJ)

8200XL and 8300 series redundant power modules

AT-RPS8000	Chassis for up to four redundant power supplies, including one power supply
AT-PWR8000	Additional redundant power supply with cable



Our comprehensive service and support plans designed to protect your network investments well into the future.

See pgs 56-60 for details

MODEL	DIMENSIONS	WEIGHT
AT-9410GB	44cm x 36cm x 6.6cm	5.5kg
8200XL series	44cm x 36cm x 6.6cm	5.5kg

FS700 Series

Layer 2 Unmanaged Fast Ethernet Switches



AT-FS705L
AT-FS705LE
AT-FS708
AT-FS708LE

10/100TX x 5 ports, external power supply
 10/100TX x 5 ports, external power supply
 10/100TX x 8 ports
 10/100TX x 8 ports, external power supply

Features

- Auto MDI/MDI-X
- Compact size

LIFETIME LIMITED WARRANTY Two years on PSU



MT-RJ, VF-45 and ST connector options are also available as fibre uplink

AT-FS705EFC
AT-FS709EFC
AT-FS709FC
AT-FS713FC
AT-FS717FC

10/100TX x 4 ports, 100FX (SC) x 1 port, external power supply
 10/100TX x 8 ports, 100FX (SC) x 1 port, external power supply
 10/100TX x 8 ports, 100FX (SC) x 1 port
 10/100TX x 12 ports, 100FX (SC) x 1 port
 10/100TX x 16 ports, 100FX (SC) x 1 port

Features

- All ports auto MDI/MDI-X
- Fibre uplink
- Compact size

LIFETIME LIMITED WARRANTY Two years on PSU



AT-FS716
AT-FS716E

10/100TX x 16 ports
 10/100TX x 16 ports, external power supply

Features

- Auto MDI/MDI-X

LIFETIME LIMITED WARRANTY Two years on PSU



AT-FS724i

10/100TX x 24 ports

Features

- All ports auto MDI/MDI-X

LIFETIME LIMITED WARRANTY Two years on PSU

Common features of the FS700 series

- Wirespeed forwarding
- IEEE 802.3 standards compliant
- Transparent to VLAN packets



GS900 Series

Layer 2 Unmanaged Gigabit Switches



AT-GS908
AT-GS908GB

10/100/1000TX x 8 ports
 10/100/1000TX x 8 ports
 GBIC bays x 2 ports

AT-GS924

10/100/1000TX x 24 ports

Features

- Store-and-Forward switching mode
- Wirespeed non-blocking switching architecture
- 8MB Buffer memory
- 8,000 MAC addresses
- Fully auto-negotiating 10/100/1000Mbps speeds and full/half-duplex modes

LIFETIME LIMITED WARRANTY

MODEL	DIMENSIONS	WEIGHT
AT-FS705L	19.6cm x 11.6cm x 3.6cm	.61kg
AT-FS705LE	10cm x 7.9cm x 2.6cm	.3kg
AT-FS708	24.9 x 11.6cm x 3.6cm	.9kg
AT-FS708LE	15cm x 7.8cm x 2.6cm	.5kg
AT-FS705EFC	17.9cm x 9.8cm x 1.7cm	.36kg
AT-FS709EFC	N/A	N/A
AT-FS709FC	30.4cm x 18.2cm x 3.8cm	1.7kg
AT-FS713FC	29.5cm x 11.5cm x 4cm	.93kg
AT-FS717FC	29.5cm x 11.5cm x 4cm	.93kg
AT-FS716	33cm x 20.3cm x 3.8cm	2.1kg
AT-FS716E	33cm x 20.3cm x 3.8cm	2kg
AT-FS724i	44cm x 17.1cm x 6.58cm	5kg
GS900 series	44cm x 19cm x 4.5cm	2.7kg



Our comprehensive service and support plans designed to protect your network investments well into the future.
 See pgs 56-60 for details

support@alliedtelesyn.com

3

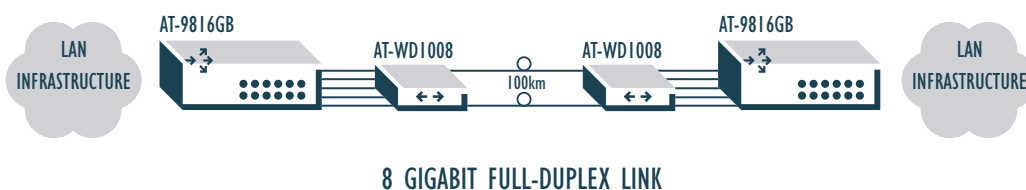
Optical Networking

Transport & DTM

Wave Division Multiplexing (WDM)

Optical Transport technology is a key component of the Allied Telesyn Core Switching Solution required to build an efficient and future-proof Metropolitan Area Network. It allows operators to meet their growing business and data networking needs by deploying cost-effective, scalable networks. Allied Telesyn's IP+Optical solutions are designed to efficiently handle the challenges of today's MANs by combining transport capabilities and capacity that offer maximum flexibility, density and reliability over long distances. Based on Coarse Wavelength Division Multiplexing (CWDM) technology, Allied Telesyn IP+Optical solutions form the core of a cost-optimised, managed platform that supports different services and network topologies.

EXAMPLE: POINT TO POINT CONNECTION BETWEEN TWO SITES USING ALLIED TELESYN'S IP & OPTICAL SOLUTION



The two locations are 70km apart. A pair of SMF fibre links both sites together. Connection between the two locations is achieved through a dedicated pair of single-mode fibres (SM) ITU-T G.652. Since the two sites are located in densely populated cities, prices for renting fibres are extremely expensive. The network in each site is connected into the SM fibres using Allied Telesyn's Coarse Wave Division Multiplexing (CWDM) device – the AT-WD1008. The AT-WD1008 multiplexes up to 8 Gigabit wavelengths into a pair of SM fibres to provide an 8 Gigabit trunk connection between each site. In this way the cost associated with fibre rent drops dramatically thanks to the CWDM solution.

AT-WD1008

Gigabit Ethernet CWDM



AT-WD1008

CWDM x 1 port
GBIC bays x 8

Features

- 8 bi-directional wavelength CWDM system
- Up to 70km (depending on fibre quality)
- 8 bi-directional channels in one pair of fibre or 4 bi-directional channels using one fibre
- Bi-directional Channels in each fibre for OPEX reduction
- Up to 8 GBIC modules
- Expansion slot for the management module (optional)
- Expansion slot for redundant power supply (optional)
- Embedded MissingLink function
- SC connectors
- Universal 100-240vAC, 50/60Hz power supply
- -48vDC power supply option

TWO YEAR WARRANTY + 1 YEAR NET.COVER® BASIC PLUS SUPPORT PROGRAM

Allied Telesyn standards-based

Gigabit Interface Converters (GBIC) modules

AT-G8T	1000T x 1 port	100m
AT-G8SX	1000SX x 1 port	550m
AT-G8LX10	1000LX x 1 port	10km
AT-G8LX25	1000LX x 1 port	25km
AT-G8LX40	1000LX x 1 port	40km
AT-G8LX70	1000LX x 1 port	70km



AT-WD1008 Expansion Modules

AT-WDRPS	Redundant power supply module
AT-WDM02	Management module
AT-WDFAN01	Fan module for AT-WD1008

8 Gigabit Ethernet Wavelengths CWDM Optical System

The AT-WD1008 is a CWDM (Coarse Wavelength Division Multiplexing) solution that multiplexes up to 8 light wavelengths to transmit signals over a single pair of optical fibre. CWDM technology is a key component of building an Ethernet MAN network because it reduces the operational cost of a fibre infrastructure (rental and/or maintenance).

The AT-WD1008 allows scalable and efficient Gigabit Ethernet services. The combination of CWDM and GBIC enables the design of a flexible and highly reliable multi-service network. The AT-WD1008 solution offers a cost-effective solution to build an Ethernet Everywhere solution in a campus or metropolitan-area network environment.

MODEL	DIMENSIONS	WEIGHT
AT-WD1008	44cm x 30.5cm x 8.5cm	8.4kg



Allied Telesyn Application

The Foundation for Video Services over ADSL

Broadcast video bundled with Voice and Data over one copper telephone pair is a simple and scalable way to deliver the service at a price point competitive to cable and satellite companies. In order to truly compete with cable providers, the video service needs to be broadcast-quality and jitter-free. Networks Service Providers have an opportunity to capture some of these revenues.

By deploying a Video over ADSL solution, DSL becomes more than just a broadband pipe and is more attractive to the subscriber base because it allows customers access to the National broadcast TV as well as local channels, first run films and pay-per-view, Community TV and Video on demand.

Specifically, the following network requirements need to be met:

- Transport 100+ IP multicast MPEG/2 streams at 3.5Mbps to several remote sites with full QoS support
- Aggregate Internet traffic from all remote sites to different central offices
- The delivery of a minimum of two video channels to each customer site
- The delivery of ISP services to each customer site
- Loop length that can deliver more than 10Mbps over distances in excess of 3.5km
- Low ownership/deployment costs

Allied Telesyn has the right solution, its access, aggregation and core transport network infrastructure is significantly less expensive and more scalable than traditional ATM/SDH alternatives. The network can be deployed relatively quickly and will allow NSPs to demonstrate an impressive Return On Investment.

Allied Telesyn presents a full system solution for deploying IP Video over ADSL using its Ethernet-based products. In fact, Allied Telesyn offers the only end-to-end IP video solution available today. The three key network components are Allied Telesyn's multi-service broadband DTM core transport switches, Rapier 24i rate-limiting, Layer 3 aggregation switch/routers, and IP packet-based DSLAMs, which deliver IP over ADSL at the access edge.

KEY DECISION FACTORS

RELIABILITY

Particularly in a carrier class network, it is imperative that networking products be manufactured to the highest quality standard.

NETWORK SCALABILITY

When making a large network upgrade, service providers want to leverage their investment for years to come with the ability to implement modular growth as necessary without the need for a forklift upgrade in the future.

Allied Telesyn's solution offers unparalleled scalability:

- 1Gbps equals 280 video streams at 3.5Mbps with MPEG2 encoding
- 2Gbps equals 560 video streams at 3.5Mbps with MPEG2 encoding
- 3Gbps equals 840 video streams at 3.5Mbps with MPEG2 encoding

SMOOTH MIGRATION

When attempting to introduce leading edge technology such as Ethernet into legacy networks, it is important to have a non-disruptive migration strategy.

NETWORK MANAGEMENT

Service providers rely on network management functionality to prevent bottlenecks. Effective circuit switch network architecture allows them to manage traffic via comprehensive QoS features with a jitterless delivery mechanism, multicast distribution control, traffic engineer path control and bandwidth control for transport. Bandwidth allocation is to 512kbps increments. The jitter characteristics are matched only by more expensive SDH.

A SOLUTION FOR DATA AS WELL AS VIDEO

In addition to video transmission, the high bandwidth ADSL offering allows the option of delivering high-speed broadband data service over the same ADSL pair.

LOW COST OF OWNERSHIP/DEPLOYMENT

Allied Telesyn's architecture is approximately 50 percent more cost-effective than any comparable ATM solution. Reduced training costs are also a benefit for an all IP-based solution.

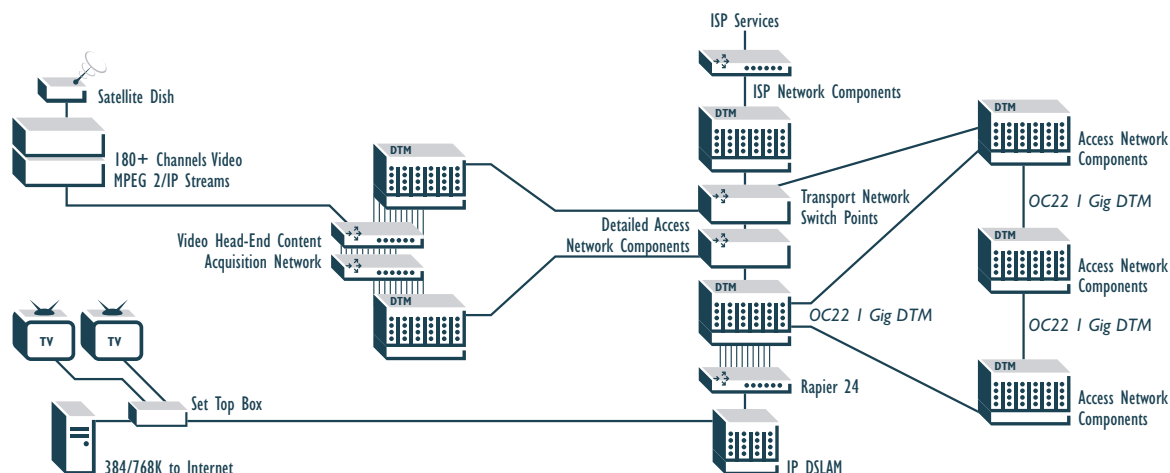
LOCAL CHANNEL INSERTION

NSPs can insert their own affiliates into the video content very simply. There is no need to purchase additional equipment to support the local channel insertion capability as it is inherent in the DTM architecture at the core of the solution.

VIDEO EXTENSION

It is possible to move IP video to other networks without any IP addressing restrictions. As a result, it has been instrumental in the innovation of delivering bundled voice, video and data over standard copper telephone lines.

MODEL FOR LARGE SCALE VIDEO DISTRIBUTION NETWORK



NM1000 Series

DTM SWITCHES

AT-NM1365 Nimbra One Base Unit™ Switch for Metropolitan Networks

BUNDLE

- 1 x Control Module
- Blind panels
- 2 x -48vDC Filter Units
- 2 x Power Cable - 48vDC



AT-NM1365 trunk modules

AT-NM1133/34 DTM 1000 Trunk Module
Single-mode optics Short Haul SH Left (A)/ Right (B)

AT-NM1238/39 DTM 1000 Trunk Module
Single-mode optics Long Haul LH Left (A)/ Right (B)

AT-NM1135/36 DTM Trunk Module SDH/SONET
622Mbps data, single-mode SC connectors Left (A)/ Right (B)

AT-NM1622 DTM 622 Trunk Module OC12-c/STM-4c
1 SFP sold separately

AT-NM6221 SFP for DTM 622 Trunk Module
1310nm, 15Km

AT-NM1365 access modules

AT-NM1011/12 8 x ports E1 Access Module
2048Mbps data, 120 ohm, RJ48 connectors, Left (A)/ Right (B)

AT-NM1015/16 8 x ports Ethernet module
10/100TX RJ45 connectors Left (A)/ Right (B)

AT-NM1021 Gigabit Ethernet Access Module

AT-NMSFP/SX-00 Gigabit Ethernet SFP for NM1021

* OC-3/STM-1 Access Module
4 x SFP option, VC-4/STS-3c, SPE capable

* OC-3/STM-1 Access Module, 4 x SFP option, VC-4/STS-3c
CPE capable, Stramatum 3/GG.813 option 1 clock

NM1000 series licenses

AT-NM1311 DTM multicast software license

AT-NM1223 220vAC/-48vDC power inverter

AT-NM1911 Nimbra vision server software license

AT-NM1912 Nimbra vision node software license

* Check with your sales representative for availability

NM200 Series

DTM SWITCHES

AT-NM1290 290 DTM Switch

Features

- 120-240VAC
- 8 x DTM ports
- 1Gbps data each
- Single-mode optics
- Short haul SC connectors

AT-NM1291 290 DTM Switch

Features

- 48vDC
- 1 x port OC-48/STM-16
- 5 x DTM ports
- 1Gbps data each
- Short haul

AT-NM1292 290 DTM Switch

Features

- 120-240VAC
- 8 x DTM ports
- 1Gbps data each
- Single-mode optics
- 4 long haul & 4 short haul SC connectors



DTM network solutions are based on open standards, such as IEEE, SONET/SDH and SMPTE/CENELEC standards, for seamless inter-working with legacy equipment, enabling a migrational path to better services. Lacking in the legacy technologies are mechanisms to handle QoS (especially for packet transport) and service provisioning/integration in an efficient way.

These contributions are 'service enhancement' sort of functions that introduce among other features:

- 100% QoS for all offered services (including packet services)
- One step end-to-end service provisioning
- Flexible bandwidth management
- Multi-service integration

The NM1000 series uses the new, and already partly ETSI standardised, DTM technology as the enabler of enhanced services. DTM (Dynamic Synchronous Transfer Mode) addresses a number of the problems that has arisen within the new world of multi-service broadband networking.

MODEL	DIMENSIONS	WEIGHT
AT-NM1365	44.4cm x 48.2cm x 26cm	15kg
AT-NM1290	88cm x 44.5cm x 30cm	5kg
AT-NM1291	88cm x 44.5cm x 30cm	5kg
AT-NM1292	88cm x 44.5cm x 30cm	5kg

4

Broadband Aggregation

Carrier Class Ethernet Solutions

Telesyn's line of Carrier Class Ethernet Solutions include Multi-service Access Platforms for Triple Play service delivery to residential and business subscribers. Utilising copper and fibre native Ethernet interfaces, Telesyn products and solutions enable leading carriers worldwide to deploy advanced revenue-generating services in xDSL, FTTx and Metro Ethernet networks.

ONE NETWORK, NO TRANSLATIONS™

The Telesyn carrier-class Ethernet networking solutions are optimised to deliver bundled services to a residential and business subscriber base over native Ethernet fibre and copper interfaces. By providing bundled services over proven native Ethernet switching technology, a service provider can simplify the network architecture, reduce operational costs and increase revenues via new and advanced services. Ethernet is ubiquitous in the LAN sphere and is now breaking open the 'last mile' bottleneck between end-users and high-speed networks. Telesyn Carrier Class Ethernet enables advanced service providers to move away from complex circuit technologies such as ATM and Frame Relay while realising improved profitability with Telesyn's 'One Network and No Translations™' solution.

Telesyn 9000 Series

Multi-service Gigabit Ethernet Platform

Capacity 9700

Service module slots x 17
Control module slot x 2 CFC24, CFC72* (future)
Redundant network modules x 2

Capacity 9400

Service module slots x 7
Control module slot x 1 CFC24, CFC72*
Redundant network modules x 2

Common features of the 9000 series

Regulatory Approvals

- NEBS Level 3 Compliant: GR-1089, GR-63
- Safety: UL 1950
- EMC: FCC Part 15 Class A
- CE, VCCI compliant

QoS

- Wirespeed QoS per Port
- 4 Class of Service
- Input metering
- Input rate limiting, Output rate shaping

OAM&P

- All Cards Hot Pluggable
- Auto-provisioning
- Management via CLI, SNMP and Telesyn NMS

Standards

- IEEE 802.1d,w Rapid Spanning Tree
- IEEE 802.1Q, MEV (double tagging)
- IEEE 802.1p Traffic Class Expediting
- IEEE 802.3ad Link Aggregation
- IEEE 802.3ah Ethernet First Mile
- IETF RFC 1112 IP Multicasting / IGMP Snooping

* Check with your sales representative for availability

The Telesyn 9000 Multi-service Gigabit Ethernet Platform leverages widely accepted Ethernet switching technology to bring an unparalleled price-to-performance ratio to the service provider's Metroedge™ networks. Whether your road to profitability is through a Fibre To The Home (FTTH) residential market strategy or Metro Ethernet business market strategy, the Telesyn 9000 is the perfect platform for your networking needs. This feature-rich, Multi-service Access Platform enables service providers to offer advanced, simultaneous 'Triple Play' services, such as high quality voice, tiered IP/Ethernet data services, and broadcast quality IP video.

With the Telesyn 9000 a provider can deliver carrier-class Metro Ethernet services to enterprises of any size. Telesyn 9000 interconnects geographically distributed multi-site corporations with ease and simplicity.



ORDERING INFORMATION

AT-TN253G
AT-TN253GF
AT-TN102-A
AT-TN104-A
AT-TN107-A
AT-TN109-A
AT-TN301-A

9400 Chassis Group with PEM, FAN, MAC
9400 Chassis Group with PEM, FAN, MAC, Filler Plates (6)
Service Module, 10/100T x 10 ports
Service Module, FX10FX, 1310nm, multi-mode, 2km Extended Heat
Service Module, FX10LX, 1310nm, single-mode, 10km, Extended Heat
Service Module, FX10SF, single-mode, 10km, Extended Heat
Transmit 1550, Receive 1310 (Compatible with Residential Gateway)
WAN Interface card, Gigabit Ethernet x 3 ports

Telesyn 7000 Series

Multi-service Access Platform

Capacity 7700 Service module slots x 17 (ADSL x 272 ports)
Control module slot x 2 (6.4Gbps)
Redundant network modules x 2 (1Gbps)

Capacity 7400 Service module slots x 7 (ADSL x 112 ports)
Control module slot x 1 (6.4Gbps)
Redundant network modules x 2 1Gbps

Capacity 7100 Single rack unit
ADSL x 48 ports
Uplink ports 10/100 Gigabit Ethernet

Common features of the 7000 series

Regulatory Approvals

- NEBS Level 3 Compliant: GR-1089, GR-63
- Safety: UL 1950
- EMC: FCC Part 15 Class A

QoS

- Wirespeed QoS per Port
- 4 Class of Service
- 802.1p marking
- Classification by TOS
- Support for 4,000 VLANs

Subscriber Security

- Subscriber Filtering to eliminate 'Denial of Service' Attacks
- RFC 3046, DHCP Relay for IP management and law enforcement

OAM&P

- Auto-provisioning
- Management via CLI and SNMP
- Inband and out of band network management with Telesyn NMS

Standards

- IEEE 802.1d,w Rapid Spanning Tree
- IEEE 802.1Q, 4,000 VLAN support
- IEEE 802.1p Traffic Class Expediting
- IEEE 802.3ad Link Aggregation
- IETF RFC 1112 IP Multicasting / IGMP Snooping

The Telesyn 7000 series leverages widely accepted Ethernet switching technology to bring an unparalleled price-to-performance ratio to the service provider's access network.

The Telesyn 7000 series is a Family of Multi-service Access Platforms. These feature-rich platforms have been highly optimised for the video over xDSL application; they enable service providers to offer advanced, simultaneous 'Triple Play' services, such as high quality voice, tiered IP/Ethernet data services, and broadcast quality IP video. The platforms deliver 12Mbps ADSL bandwidth at extremely long loops – ideal for rural deployments of advanced services. Migration to higher speed is as simple as a field upgrade of firmware to deploy 16Mbps and beyond. With features like theft prevention, real time statistic, advanced diagnostic and security, Telesyn 7000 ensures that deployments and resulting new revenue streams are continuous and without disruption.



ORDERING INFORMATION

AT-TN100-A	ADSL16, ADSL Service Module x 16 ports
AT-TN101-A	ADSL8, ADSL Service Module x 8 ports with Integrated Splitters
AT-TN108-A	ADSL16, ADSL Service Module x 16 ports for Annex B support
AT-TN250G	Telesyn 7700 chassis with PEM, FAN, MAC
AT-TN251G	Telesyn 7400 chassis with PEM, FAN, MAC
AT-TN300-A	GE1, 1000X (SFP Based) Network Module
AT-TN400-A	CFC6, 6.4Gbps Control Module
AT-TN7101	ADSL x 48 ports (without splitters)*
AT-TN7102	ADSL x 24 ports (with splitters)
AT-TN7103	ADSL x 16 ports (without splitters)*
AT-TN7104	ADSL x 8 ports (with splitters) (future)*

* Check with your sales representative for availability

MODEL	DIMENSIONS	WEIGHT
Telesyn 9700	44cm x 30cm x 40cm	15kg
Telesyn 9400	44cm x 30cm x 13cm	7kg
Telesyn 7700	44cm x 30cm x 40cm	27.2kg
Telesyn 7400	44cm x 30cm x 13cm	18kg
Telesyn 7100	44cm x 30cm x 4.4cm	4kg

5

Security Appliances & Routers

For High Security Routers see pg 32

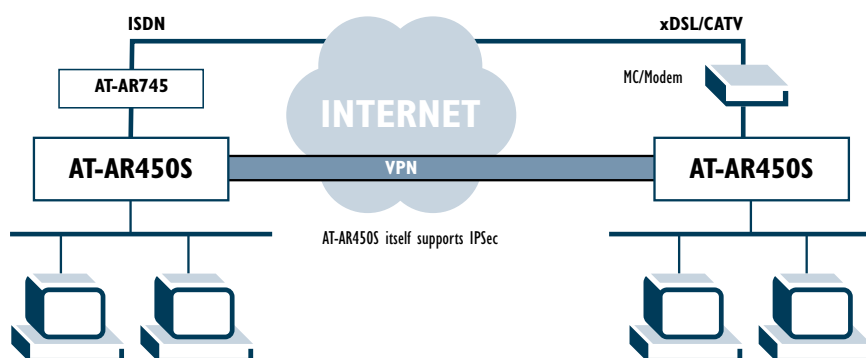
Allied Telesyn's AR- series of WAN and Internet Multi-service Access Products include solutions for PSTN, ISDN and xDSL, as well as T1/E1, frame relay and leased-line connections.

With the industry's most comprehensive hardware and software features sets for this class of router, including the AT-Firewall Stateful Inspection Firewall, AR series routers are able to deliver precisely the breadth of functionality that small and mid-sized businesses require, at price points they can afford, and with the reliability that makes Allied Telesyn a trusted networking partner.

SECURITY

The Allied Telesyn line of security products is intended to be the security solution of choice for organisations looking to enhance their network security architecture with leading security products and solutions. The ability to provide, from one vendor, best of breed security solutions that address multiple areas of information security is highly desired in today's fast-paced market.

EXAMPLE: VIRTUAL PRIVATE NETWORK



The AT-AR450S can be utilised in broadband services such as FTTH/O, ADSL & CATV by its high performance. For example, a service based on 100M FTTH. The service using PPPoE as its authorisation and provides several global IP addresses so that customers could open their servers to the Internet. Ethernet I port could be used as a DMZ port to isolate the DMZ from the private network and to make the private network secure.

ROUTER SELECTOR

MODULAR ENTERPRISE ROUTERS

Multi-protocol routing > > >

AT-AR725 > > > 10/100TX x 2 port 28
 Async x 2 ports (RJ45)
 PIC card x 2 bays (fixed)
 128MB RAM
 Support up to 512MB SDRAM
 16MB Flash on Board
 Support up to 192MB Compact Flash

Multi-protocol routing with Network Service Module > > >

AT-AR745 > > > 10/100TX x 2 ports 28
 Async x 2 ports (RJ45)
 PIC card x 2 bays (fixed)
 Supports Network Service Module (NSM)
 128MB RAM
 Support up to 512MB SDRAM
 16MB Flash on Board
 Support up to 192MB Compact Flash

MID-RANGE NETWORK ACCESS ROUTER

Multiple Ethernet, VLAN support & choice of WAN interfaces > > >

AT-AR410 > > > 10/100TX x 5 ports 29
 Async x 1 port
 Console x 1 port
 PIC card x 1 bay

BROADBAND CABLE/DSL ROUTERS

Annex A ADSL Modem > > >

AT-AR210 > > > USB x 1 port 31
 ADSL (Annex A) x 1 port (RJ-11)

Annex B ADSL Modem > > >

AT-AR215 > > > USB x 1 port 31
 ADSL (Annex B) x 1 port (RJ45)

For use with external modem > > >

AT-AR220E > > > 10T x 1 port (RJ45) 31
 10/100TX x 4 ports (RJ45)

ADSL router/modem > > >

AT-AR240E > > > 10T x 1 port (RJ45) 31
 ADSL (Annex A) x 1 port (RJ-11)
 USB x 1 port

ADSL bridge router > > >

AT-AR250E > > > 10/100TX x 4 ports (RJ45) 30
 ADSL (Annex B) x 1 port (RJ-11)

AT-AR255E > > > 10/100TX x 4 ports (RJ45) 30
 ADSL (Annex B) x 1 port (RJ-11)

AT-AR267 > > > 10/100TX x 1 port (RJ45) 30
 ADSL x 1 port (RJ-11)
 USB x 1 port
 Console x 1 port
 ISDN BRI x 1 port

SECURITY SELECTOR

MEDIUM/LARGE ENTERPRISE - HIGH END SECURITY APPLIANCES

Broadband security router > > >

AT-AR450S > > > 10/100TX x 5 ports LAN 32
 10/100TX x 1 port WAN
 10/100TX x 1 port DMZ
 Async x 2 ports

SMALL/BRANCH OFFICE SECURITY APPLIANCES

Multiple Ethernet, VLAN support & choice of WAN interfaces > > >

AT-AR410S > > > 10/100TX x 4 ports LAN 33
 10/100TX x 1 port WAN
 Async x 1 port
 Console x 1 port
 PIC card x 1 bay
 IPSec Accelerator
 Security Appliance

Dual Ethernet with encryption accelerator, > > >
 Stateful Inspection Firewall & SSH

AT-AR320 > > > 10T x 2 ports 33
 Async x 2 ports

AT-AR320S > > > 10T x 2 ports 33
 Async x 2 ports
 IPSec Accelerator

AR700 Series

Modular Enterprise Routers

AT-AR725

10/100TX x 2 port
Async x 2 ports (RJ45)
PIC card x 2 bays (fixed)
128MB RAM
Support up to 512MB SDRAM
16MB Flash on Board
Support up to 192MB Compact Flash



Features

- High performance RISC processor
- Flexible configuration with slide-in PICs
- Security services
- Hardware encryption and compression option
- Cost-effective upgrade as network requirements change
- Multi-protocol routing including: RIPV1/v2 and OSPFv2
- IPv6 optional
- Stateful Inspection Firewall option
- IPSEC/ISAKMP VPN option

TWO YEAR WARRANTY + 1 YEAR NET.COVER® BASIC PLUS SUPPORT PROGRAM



AT-AR745

10/100TX x 2 ports
Async x 2 ports (RJ45)
PIC card x 2 bays (fixed)
Supports Network Service Module (NSM)
128MB RAM
Support up to 512MB SDRAM
16MB Flash on Board
Support up to 192MB Compact Flash

Features

- High performance RISC processor
- PCI-bus slide-in Network Service Module (NSM)
- Supports up to 6 Port Interface Cards (PICs) with NSM module
- Wide range WAN and LAN interfaces
- Hardware encryption and compression option
- -48VDC version for Telco applications
- Ultra compact 19", 1U rackmount design
- External Redundant Power Supply option (AT-RPS740)
- IPv6 optional

TWO YEAR WARRANTY + 1 YEAR NET.COVER® BASIC PLUS SUPPORT PROGRAM

AT-AR745 Network Service Module (NSM)

AT-AR040 NSM for 4 PICs *

AT-AR041 NSM with 8 BRI ports (S/T)

AT-AR042 NSM with 4 BRI ports (S/T)

AR700 series software and internal hardware-enabled encryption and compression cards

See Hardware Enabled Encryption and Compression Cards on page 41.

AR700 series Port Interface Cards (PICs)

AT-AR020 E1/T1 PRI integral CSU/DSU x 1 port *

AT-AR021 ISDN BRI x 1 port (S/T)

AT-AR023 Sync x 1 port (2Mbps) Frame Relay, X.25
- (cabling required)

AT-AR024 Async x 4 ports (4 x 115kbps)

AT-AR026 10/100TX switch x 4 ports (Layer 2 switch)

AT-AR027 2 port VoIP FXS

Redundant Power Supply option

AT-AR740RPS External redundant power supply

Memory Upgrade option

AT-CF128A 128MB Compact Flash

AT-SD256A 256MB SDRAM

AlliedWare™

The AR700 series ship with Full Layer 3 software.
Advanced Layer 3 and Security pack option available.
Please see technical specification details and ordering p/n on page 42.

* Only 2 x AT-AR020 (E1/T1) supported in AT-AR040

Sync Cabling available for the AR700 series

AT-X.21-DTE Cable
AT-X.21-DCE Cable
AT-RS232-DTE Cable
AT-RS232-DCE Cable
AT-V.35-DTE Cable
AT-V.35-DCE Cable



Our comprehensive service and support plans designed to protect your network investments well into the future.

See pgs 56-60 for details

MODEL	DIMENSIONS	WEIGHT
AT-AR725	44cm x 33cm x 4.4cm	4.5kg
AT-AR745	44cm x 33cm x 4.4cm	4.8kg

AT-AR410

Mid-Range Network Access Router

AT-AR410

10/100TX x 5 ports
 Async x 1 port
 Console x 1 port
 PIC card x 1 bay



Features

- E1, T1, PRI, BRI, Sync, Frame Relay, Leased Line, VoIP, Async option
- Multi-protocol routing including: RIPv1/v2 and OSPFv2
- DHCP, SMTP, IGMP, IGMPv2 and RSVP support included
- Up to 256 VPN tunnels
- Branch office access to corporate network or WAN
- VLAN support
- IPv6 optional
- Small to medium office Internet access
- Protects against 'Denial of Service' attacks
- Security services
- DES encryption support
- Stateful Inspection Firewall optional
- Optional SSH
- Optional hardware VPN
- Optional 3DES encryption support
- Chip & PIN support *

TWO YEAR WARRANTY + 1 YEAR NET.COVER™ BASIC PLUS SUPPORT PROGRAM

* Check with your sales representative for availability

AlliedWare™

The AT-AR410 ships with Full Layer 3 software.

Advanced Layer 3 and Security pack option available.

Please see technical specification details and ordering p/n on page 42.

The AT-AR410 software and internal hardware-enabled encryption and compression cards

See Hardware Enabled Encryption and Compression Cards on page 41.

AT-3DES Triple DES/SW - requires encryption card

AT-AR410 Port Interface Cards (PICs)

AT-AR020 E1/T1 PRI x 1 port

AT-AR021 ISDN BRI x 1 port (U & S/T)

AT-AR023 Sync x 1 port (2Mbps) Frame Relay, X25
 - (cabling required)

AT-AR024 Async x 4 ports (4 x 115kbps)

AT-AR027 2 port VoIP FXS

Sync Cabling available for the AT-AR410

AT-X.21-DTE Cable

AT-X.21-DCE Cable

AT-RS232-DTE Cable

AT-RS232-DCE Cable

AT-V.35-DTE Cable

AT-V.35-DCE Cable

MODEL	DIMENSIONS	WEIGHT
AT-AR410	30cm x 19cm x 4.5cm	1.8kg



Our comprehensive service and support plans designed to protect your network investments well into the future.

See pgs 56-60 for details

support@alliedtelesyn.com

AR200 Series

Broadband Cable/DSL Routers

AT-AR267

10/100TX x 1 port (RJ45)
ADSL x 1 port (RJ-11)
USB x 1 port
Console x 1 port
ISDN BRI x 1 port

Features

- Browser-based GUI
- Dynamic Host Configuration Protocol (DHCP)
- Dynamic IP address assignment
- Euro ISDN, BRI (S/T)
- Full rate ADSL G.DMT, up to 8Mbps downstream & 1Mbps upstream
- Supports G.lite ADSL up to 1.5 Mbps downstream & 512kbps upstream
- Flash upgradeable
- Global IP address pool on ADSL port
- High speed ADSL connectivity with ISDN backup
- ICSA-certified Stateful Inspection Firewall (optional)
- Integral 4 port switch
- IP multi-homing
- IPSec operation (option)
- L2TP LAC/LNS
- Network Address Translation (NAT)
- Optional hardware accelerator for DES/3DES encryption
- Port-based VLAN support
- SNMP support
- USB port

TWO YEAR WARRANTY + 1 YEAR NET.COVER® BASIC PLUS SUPPORT PROGRAM



AT-AR250E

ADSL Router (Annex A)
10/100TX x 4 ports (RJ45)
ADSL x 1 port (RJ-11)

Features

- Supports Annex A - ADSL
- Integral 4-port 10/100TX switch

AT-AR255E

ADSL Router (Annex B)
10/100TX x 4 ports (RJ45)
ADSL x 1 port (RJ-11)

Features

- Supports Annex B - ADSL over EURO-ISDN
- Integral 4-port 10/100TX switch

Common features of the AR250E series

- Full rate ADSL G.DMT, up to 8Mbps downstream & 1Mbps upstream
- Supports G.Lite ADSL up to 1.5Mbps downstream & 512kbps upstream
- Single IPSec, PPTP, L2TP VPN
- Built-in Stateful Inspection Firewall
- Intrusion Detection System protects against 'Denial of Service' attacks
- Dynamic Port Opening for gaming and audio/video applications
- Global IP Address pool supported on WAN port
- Network Address Translation (NAT), no-NAT also supported
- DHCP Server/Relay
- DNS Proxy
- Simultaneous USB and Ethernet operation (routed)
- PPP over Ethernet (PPPoE), PPP over ATM (PPPoA)
- Bridged Ethernet over ATM (RFC1483)
- Classical IP, IP over ATM
- Browser Based GUI with on-line 'Help'
- Flash upgrade
- Default Switch

TWO YEAR WARRANTY + 1 YEAR NET.COVER® BASIC PLUS SUPPORT PROGRAM



Our comprehensive service and support plans designed to protect your network investments well into the future.

See pgs 56-60 for details

MODEL	DIMENSIONS	WEIGHT
AT-AR267	26cm x 18cm x 3.8cm	.5kg
AT-AR250E	17cm x 3.5cm x 11.5cm	.3kg
AT-AR255E	17cm x 3.5cm x 11.5cm	.3kg

AR200 Series

Broadband Cable/DSL Routers



AT-AR210

USB ADSL Modem (Annex A)
USB x 1 port
ADSL x 1 port (RJ-11)

Features

- Supports Annex A - ADSL

AT-AR215

USB ADSL Modem (Annex B)
USB x 1 port
ADSL x 1 port (RJ45)

Features

- Supports Annex B - ADSL over ISDN

AT-AR240E

ADSL Router (Annex A)
10T x 1 port (RJ45)
ADSL x 1 port (RJ-11)
USB x 1 port

Features

- Supports Annex A - ADSL
- Full rate ADSL G.DMT, up to 8Mbps downstream & 1Mbps upstream
- Supports G.Lite ADSL up to 1.5Mbps downstream & 512kbps upstream
- Single IPSec, PPTP, L2TP VPN
- Built-in Stateful Inspection Firewall
- Intrusion Detection System protects against 'Denial of Service' attacks
- Dynamic Port Opening for gaming and audio/video applications
- Global IP Address pool supported on WAN port
- Network Address Translation (NAT), no-NAT also supported
- DHCP Server/Relay
- DNS Proxy
- Simultaneous USB and Ethernet operation (routed)
- PPP over Ethernet (PPPoE), PPP over ATM (PPPoA)
- Bridged Ethernet over ATM (RFC1483)
- Classical IP, IP over ATM
- Browser Based GUI with on-line 'Help'
- Flash upgrade
- Default Switch

TWO YEAR WARRANTY + 1 YEAR NET.COVER® BASIC PLUS SUPPORT PROGRAM



AT-AR220E

10T x 1 port (RJ45)
10/100TX x 4 ports (RJ45)

Features

- Supports up to 253 LAN users
- External MDI/MDI-X switch
- Supports PPP over Ethernet (PPPoE)
- Virtual server support
- Integral 4-port 10/100TX switch
- DNS Proxy support
- Network Address Translation (NAT)
- DHCP for simple IP address assignment
- DMZ support
- Support PPTP protocol
- External power connector

TWO YEAR WARRANTY

MODEL	DIMENSIONS	WEIGHT
AT-AR210	12cm x 8.4cm x 2.4cm	.15kg
AT-AR215	12cm x 8.4cm x 2.4cm	.15kg
AT-AR220E	17cm x 10cm x 3.1cm	.5kg
AT-AR240E	17cm x 3.5cm x 11.5cm	.3kg



Our comprehensive service and support plans designed to protect your network investments well into the future.
See pgs 56-60 for details

support@alliedtelesyn.com

AT-AR450S Medium/Large Enterprise



AT-AR450S

Secure VPN + Firewall Router for SME

10/100TX x 5 ports LAN
10/100TX x 1 port WAN
10/100TX x 1 port DMZ
Async x 2 ports

Features

- Stateful Inspection Firewall
- 511 IPSEC/ISAKMP VPN
- Hardware based AES 3DES DES encryption
- Intrusion Detection & Attack Alert System
- Support Windows XP, 2000 VPN clients using pre-shared keys and X509 certificates
- L2TP
- PPP over Ethernet (PPPoE)
- Protects against 'Denial of Service' attacks
- PAP/CHAP user authentication
- RADIUS/TACAS+ look-up
- SMTP and HTTP Proxy
- SSH SSL
- IEEE 802.1Q tagged VLAN support
- 4 priority QoS traffic classes
- 64 VLANs

TWO YEAR WARRANTY + 1 YEAR NET.COVER® BASIC PLUS SUPPORT PROGRAM

* Check with your sales representative for availability

IPSEC AUTHENTICATION

- SHA-1
- MD5
- PKI

ROUTING PROTOCOLS

- OSPF
- BGP4 optional
- RIPv1 & RIPv2
- IPv6 optional

MULTICAST PROTOCOL

- DVMRP
- PIM-SM, PIM-DM

ADVANCED TRAFFIC CAPABILITIES

- GRE
- Loadbalancing optional
- IP Multihoming

High Security Router

The Allied Telesyn AT-AR450S is an enterprise-class security appliance offering versatility, integration, performance and security for medium business and enterprise networks. With on board hardware encryption the AT-AR450S offers DES-3DES and AES (Advanced Encryption Standard) hardware encryption delivering up to 65Mbps of 3DES VPN + NAT and Firewall throughput and 40Mbps of AES-256 VPN + NAT and Firewall throughput.



Performance

Concurrent Sessions (Firewall NAT)	18,000
# Policies	1024
Firewall/NAT PPPoE throughput	up to 100Mbps
VPN IPsec (3DES) + Firewall	up to 65Mbps
VPN IPsec (AES) + Firewall	up to 65Mbps



Our comprehensive service and support plans designed to protect your network investments well into the future.

See pgs 56-60 for details

MODEL	DIMENSIONS	WEIGHT
AT-AR450S	26cm x 18cm x 3.8cm	1.7kg

AT-AR410S

SMB/Branch Office

The AT-AR410S software and internal hardware-enabled encryption and compression cards See Hardware Enabled Encryption and Compression Cards on page 41.

AT-3DES Triple DES/SW - requires encryption card

AT-AR410S Port Interface Cards (PICs)

AT-AR020 E1/T1 PRI x 1 port
 AT-AR021 ISDN BRI x 1 port (U & S/T)
 AT-AR023 Sync x 1 port (2Mbps) Frame Relay, X.25
 - (cabling required)
 AT-AR024 Async x 4 ports (4 x 115kbps)
 AT-AR027 2 port VoIP FXS

* Check with your sales representative for availability

Sync Cabling available for the AT-AR410S

AT-X.21-DTE Cable
 AT-X.21-DCE Cable
 AT-RS232-DTE Cable
 AT-RS232-DCE Cable
 AT-V.35-DTE Cable
 AT-V.35-DCE Cable

AT-AR410S

10/100TX x 4 ports LAN
 10/100TX x 1 port WAN
 Async x 1 port
 Console x 1 port
 PIC card x 1 bay
 IPSec Accelerator
 Security Appliance

Features

- 254 VPN (IPSEC/ISAKMP)
- Hardware based DES and 3DES encryption
- Stateful Inspection Firewall
- Attach Alert System
- Supports Windows XP, 2000 VPN clients using pre-shared keys and X509 certificates
- L2TP
- PPP over Ethernet (PPPoE)
- Protects against 'Denial of Service' attacks
- PAP/CHAP user authentication
- RADIUS/TACAS+ look-up
- SMTP and HTTP Proxy
- SSH SSL
- 1 PIC WAN (ISDN BRI/PRI/E1, Frame Relay, X25, Leased Line, VoIP FXS)

TWO YEAR WARRANTY + 1 YEAR NET.COVER® BASIC PLUS SUPPORT PROGRAM



AlliedWare™

The AT-AR410S ships with Full Layer 3 software. Advanced Layer 3 option available. Please see technical specification details and ordering p/n on page 42.

AT-AR320

Teleworker/SOHO



AT-AR320

Dual Ethernet security appliance
 Dual Ethernet security appliance with VPN encryption accelerator
 10T x 2 ports
 Async x 2 ports

Features

- 60 VPN (IPSEC/ISAKMP) (AT-AR320S only)
- Hardware based DES and 3DES encryption (AT-AR320S only)

Common features of the AT-AR320

- Stateful Inspection Firewall
- Attach Alert System
- Supports Windows XP, 2000 VPN clients using pre-shared keys and X509 certificates
- L2TP
- PPP over Ethernet (PPPoE)
- Protects against 'Denial of Service' attacks
- PAP/CHAP user authentication
- RADIUS/TACAS look-up
- SMTP and HTTP Proxy
- AlliedWare OS (see pg 42 AR450S ICSA LAB Certified*)

TWO YEAR WARRANTY + 1 YEAR NET.COVER® BASIC PLUS SUPPORT PROGRAM

MODEL	DIMENSIONS	WEIGHT
AT-AR410	30cm x 19cm x 4.5cm	1.8kg
AT-AR320	26cm x 18cm x 3.8cm	1.7kg



Our comprehensive service and support plans designed to protect your network investments well into the future.
 See pgs 56-60 for details

6





Residential Gateway

The infrastructures of the Internet and corporate Intranets are constantly being upgraded. The market is wide open for service providers ready to deliver high-speed access and applications. A growing demand for broadband traffic combining video, voice and data is revealing. There is an urgent need for a single, cost-effective unit that offers a full suite of services simply and cost-effectively to subscribers.

The answer is the AT-Residential Gateway, an integrated voice/video/data device offering inter-connectivity to local devices, and access and connectivity services to an external broadband network. When Triple Play is offered, the AT-RG can expertly provide all functions through one device. The PCs for the Internet access, the VoIP for analogue or ISDN phone and the STB for video can all be serviced from the RG.

Using the Zero Touch Configurator designed by Allied Telesyn, a network of Residential Gateway can be easily configured, provisioned and deployed in the residence.

Residential Gateway Products & Components

	Passive Part	AT-RG001	Fibre Outlet (10 pieces)
	Splice Kit	AT-RG010 AT-RG011 AT-RG020 AT-RG021	Fibre Outlet Kit - single-mode Fusion Splice Fibre Outlet Kit - multi-mode Fusion Splice Fibre Outlet Kit - single-mode Mechanical Splice Fibre Outlet Kit - multi-mode Mechanical Splice
	Active Unit	AT-RG613TX AT-RG613FX AT-RG613LX AT-RG623TX AT-RG623FX AT-RG623LX	3 x LAN, 2 x FXS, 1 x WAN 10/100TX 3 x LAN, 2 x FXS, 1 x WAN 10/100 Fibre multi-mode 3 x LAN, 2 x FXS, 1 x WAN 10/100 Fibre single-mode 3 x LAN, 2 x BRI, 1 x WAN 10/100TX 3 x LAN, 2 x BRI, 1 x WAN 10/100 Fibre multi-mode 3 x LAN, 2 x BRI, 1 x WAN 10/100 Fibre single-mode
	Accessories	AT-RG005 AT-RG006 AT-RGCONSOLECABLE	Battery Back Up Battery Back Up Cable
	Configuration Software	AT-ZTC500 AT-ZTCUPGRADE AT-ZTCUNLIMITED	Zero Touch Configurator up to 500 users Zero Touch Configurator upgrade to unlimited users version Zero Touch Configurator unlimited users version

RG600 & RG200 Series

Residential Gateway

AT-RG213

10/100TX or FX x 1 WAN port
10/100TX x 3 Eth. Port
FXS x 2 port
PSTN x 1 line port

Features

- IGMP V1/V2 Multicast support
- Tag based 802.1Q VLAN support
- Codec include G.711, G.723 and G.729 (optional)
- L2TP access concentrator
- H.323, SIP, MGCP/NCS protocol support

TWO YEAR LIMITED WARRANTY



AT-RG623

10/100TX or FX/LX x 1 WAN port
10/100TX x 3 Eth. Port
ISDN BRI x 1 port

AT-RG613

10/100TX or FX/LX x 1 WAN port
10/100TX x 3 Eth. Port
FXS x 2 port

Common features of the RG600 series

- Tagged based VLAN (802.1Q)
- Layer 2 & Layer 3 QoS
- IGMP snooping and proxying
- PPPoE protocol support
- DHCP client, server & relay support
- UpnP IGD profile support & NAT traversal
- Network Address Translation (NAT)
- Stateful Inspection Firewall
- H.323, SIP, MGCP protocol support
- G.711, G.726, G.729 and G.723 (optional)
- T.38 fax operation
- External Power Supply
- External Battery Backup support (optional)

TWO YEAR LIMITED WARRANTY

ZTC

Zero Touch Configurator

AT-ZTC500

Zero Touch Configurator up to 500 users

AT-ZTCUPGRADE

Zero Touch Configurator upgrade to unlimited users version

AT-ZTCUNLIMITED

Zero Touch Configurator unlimited users version

Common features of the ZTC series

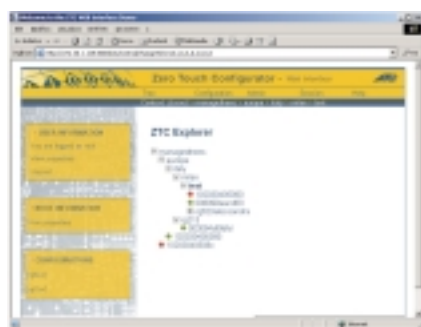
- Support for RG200 and RG600 series device
- Multi-protocol (TFTP, HTTP, HTTPS)
- Support for High Availability and Fault Tolerance
- Horizontal and vertical scalability
- Flexibility
- Security and user profiling
- Creation of views on configuration data
- Minimum requirement Pentium 3 or similar CPU
- 256MB RAM (512MB recommended)
- 20GB Hard disk
- OS - Linux Red Hat 7.2 or Suse 8.1

FIBRE APPLICATION

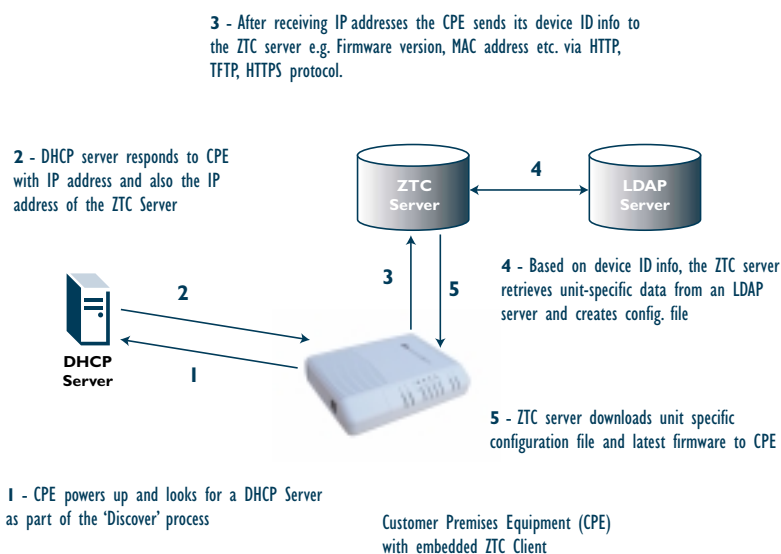
LX (single-mode) version
FX (multi-mode) version

COPPER APPLICATION

TX version



ZTC - HOW IT WORKS



MODEL	DIMENSIONS	WEIGHT
AT-RG623	19.8cm x 14.9cm x 4.6cm	.45kg
AT-RG613	19.8cm x 14.9cm x 4.6cm	.45kg
AT-RG213	19.8cm x 14.9cm x 4.6cm	.45kg

7

Voice over IP



IP telephony

VoIPtalk™ is Allied Telesyn's Voice over IP networking solution for the enterprise, scaling from the smallest remote office to the busiest central site. VoIPtalk™ components include telephone/IP gateways, PSTN/IP gateways and the management software required to control the operation of these networks. VoIPtalk™ is designed to dramatically reduce telecommunications costs, since calls are re-routed through data networks instead of standard telephone networks. Outlay is minimal as VoIPtalk™ fully utilises existing telecommunications equipment and IP data networks. VoIPtalk™ products interwork seamlessly with Allied Telesyn's comprehensive range of wide area network routers.

AT-VP500 SIP Server Software

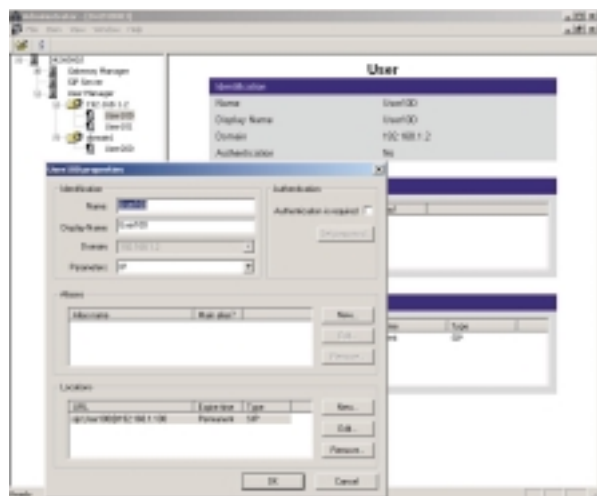
The AT-VP500SIPSERVER is a SIP redirect server designed to provide connectivity between IP Telephony endpoints in networks composed of VoIPtalk™ units. It uses the SIP (Session Initiation Protocol) protocol, which is a simple signalling protocol for Internet conferencing and telephony.

AT-VP500SIPSERVER allows a Network Manager to administer a VoIP network running VoIPtalk™ units from one central location. It supports the following Class 5 services :

- Call Display
- Call Waiting
- Visual call waiting
- Call forwarding
 - Busy
 - No answer
 - Preferred
- Speed Dialing
- Call transfer

AT-VP500SIPSERVER020
AT-VP500SIPSERVER040
AT-VP500SIPSERVER120
AT-VP500SIPSERVERMX

Software license for 20 users
Software license for 40 users
Software license for 120 users
Software license unlimited users license



AT-VP500 Unit Network Manager

Unit Network Manager for the VP600 series is a user friendly element management system designed to facilitate the deployment, configuration and provisioning of Allied Telesyn VoIP access device and gateways.

AT-VP500UNM020
AT-VP500UNM040
AT-VP500UNM120
AT-VP500UNMMX

To manage up to 20 devices
To manage up to 40 devices
To manage up to 120 devices
To manage up to 1000 devices



VP600 Series

IP Telephony/Voice over IP

AT-VP604E FXS 10/100TX x 1 port (RJ45)
FXS x 4 ports (RJ-11)
PSTN bypass x 1 port (RJ-11)

Features

- Supports up to four attached analogue devices
i.e. phone, G3 fax, modem
- Supports standard vocoders G.711 (A-law, μ -law), G.723.1, G.729 a,b,e
- PSTN bypass in event of power failure
- Country-specific dial and busy tones



AT-VP604E FXO 10/100TX x 1 port (RJ45)
FXO x 4 ports (RJ-11)

Features

- Supports up to four analogue PSTN lines
- Supports standard vocoders G.711 (A-law, μ -law), G.723.1 (5.3kbps and 6.4kbps)
- Real-time Transport Protocol (RTP) for voice streaming
- Differentiated Services Code Point (DSCP) for Quality of Service
- IEEE 802.1Q VLAN tagging
- Loop Start and Ground Start supported

Common features of the VP604E series

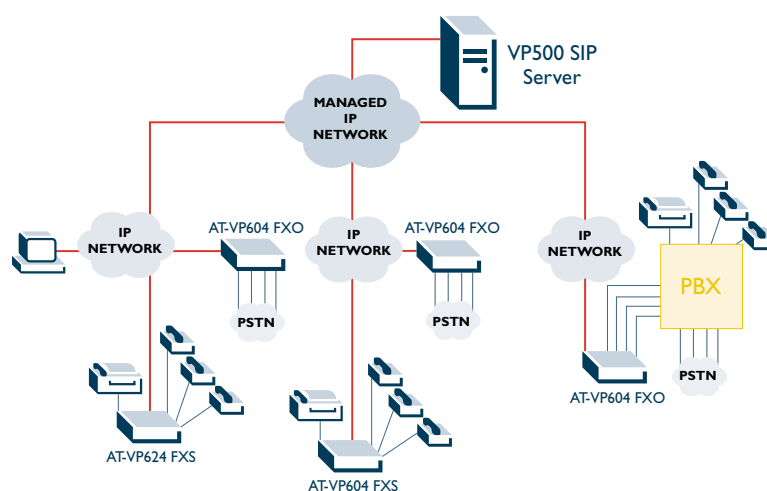
- Compliant with SIP, H.323 and MGCP
- DHCP for simple IP address assignment
- Supports user-specific profiles
- Status LEDs
- QoS: 802.1Q, DiffServ support
- Management: SNMPv2, TFTP support

AT-VP624E FXS 10/100TX x 1 port (RJ45)
Analogue devices (FXS) x 24 ports (RJ21 Telco)
Bypass PSTN x 1 port (RJ-11)

Features

- Compliant SIP, MGCP/NCS
- Supports up to four attached analogue devices
i.e. phone, G3 fax, modem
- Supports standard vocoders G.711 (A-law, μ -law), G.723.1, G.729 a,b
- PSTN bypass in event of power failure
- Country-specific dial and busy tones
- QoS: 802.1Q, DiffServ support
- Management: SNMPv2, TFTP support

VP600 SOLUTIONS



MODEL	DIMENSIONS	WEIGHT
AT-VP604E FXS	26cm x 18cm x 5.5cm	.6kg
AT-VP604E FXO	26cm x 18cm x 5.5cm	.6kg
AT-VP624E FXS	43cm x 21cm x 4.4cm	1.7kg

8

Network Management & Software

Allied Telesyn's software offerings allow effective monitoring and proactive management of both small and large networks. GUI-based, point-and-click interfaces make report generation a snap. Reduce network downtime costs by identifying problems quickly.

NMS TELESYN 3.0 Network Management Software

For today's complex networks, Telesyn NMS allows users to manage all network components from one screen in a user-friendly format

A product for everyone's needs.

MAIN FEATURES

- Network Discovery and Topology
- One Touch Installation (future)
- Security Management
- Fault Management
- Configuration Management
- Performance Monitoring
- Inventory Management
- Distributed Server Configuration
- Alarm Support
- Backup and Restore
- VLAN Provisioning and Monitoring
- File Export
- E-mail notification Service
- HP OpenView Integration
- Database Support – MySQL (Oracle future)
- Network Service Provisioning
- Northbound Management (future)

SUPPORTED DEVICES

AT-RP24	AT-RG213
AT-RP24i	AT-8728
AT-RP48	AT-8748
AT-RP48i	TELESYN 7000
AT-RPG6	TELESYN 9000
AT-9812T	
AT-9816GB	
AT-SB4104	
AT-SB4108	

ORDERING INFORMATION

AT-TN-603-0G	Telesyn NMS Release 3.0 Gold
AT-TN-603-0P	Telesyn NMS Release 3.0 Platinum

The Platinum software is intended for Service Providers and includes

- Network-wide VLANs
- Port Management
- Card Management



The Telesyn NMS meets today's business requirements for the control and operation of Allied Telesyn's family of Internet routers and switches. Via a user-friendly interface, Telesyn NMS will substantially decrease the time required for deployments and provisioning of large networks, spanning into more efficient operations of existing networks with numerous benefits such as:

RAPID DEPLOYMENT – via features such as template downloads (future) and flow-through provisioning (future), upgrading equipment or turning up new services becomes a snap with the Telesyn NMS.

IMPROVED NETWORK MANAGEMENT – using the extensive fault management and provisioning features of Telesyn NMS the operators can easily monitor and maintain the Allied Telesyn systems and interfaces.

SECURITY MANAGEMENT – manages individual users and user groups and applies security policies to each: read-only, read-write and admin. Also creates security audit trails for tracking purposes.

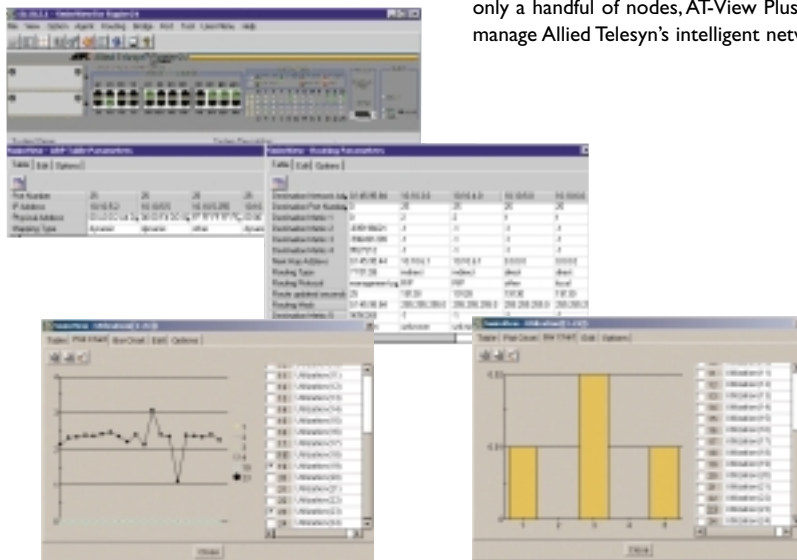
AT-View Plus 2.0

Network Device Management Software

AT-View Plus is the new, Java-based network device management solution from Allied Telesyn. Whether managing a large network distributed across multiple sites with HP OpenView or small networks with only a handful of nodes, AT-View Plus provides the tools needed to effectively monitor and proactively manage Allied Telesyn's intelligent networking products.

Features

- GUI interface
- Detailed agent viewer
- Real-time device/port status
- Configuration tools
- Drill-down functionality
- MIB Browser
- Supports four main RMON groups
- Reporting and graphical tools
- Supports NMS alarms
- Programming interfaces
- Java-based, multi-platform
- Works with HP OpenView
- Castle Rock SNMPc support



SUPPORTED DEVICES

These are updated frequently, so contact your Allied Telesyn sales representative or visit www.alliedtelesyn.com to get all the latest updates.

GBICS

AT-G8 Series

GIGABIT EXPANSION MODULES (UPLINK MODULES)

AT-A15SX
AT-A15LX
AT-A35LX/SC
AT-A35SX/SC
AT-A39T

HUBS

AT-FH812u
AT-FH824u

LAYER 2 SWITCHES

AT-8012M*
AT-8024
AT-8024FC
AT-8024GB
AT-8024M
AT-8088*
AT-8124
AT-8124XL (V2)
AT-8216FXL/SC
AT-8224XL
AT-8324
AT-8324SX
AT-8326GB
AT-9006SX/SC
AT-9006T
AT-9410GB

LAYER 2/4 SWITCHES

AT-8724XL
AT-8724XL
(-48VDC)
AT-8748XL
AT-8748XL
(-48VDC)

LAYER 3 SWITCHES

Rapier 16FI/SC
Rapier 16FI/MT
Rapier 24
Rapier 24i
Rapier 48
Rapier 48i
Rapier G6
Rapier G6FLX/SC
Rapier G6FSX/SC
Rapier G6FSX/MT-RJ

LAYER 3/4+ SWITCHES

AT-9812T
AT-9816GB

MANAGEMENT MODULES

AT-BMGMT
AT-MCM02
AT-PBM02
AT-SB4211

MEDIA CONVERTERS

AT-MCF06 Series
AT-MCF12 Series
AT-MCF106 Series
AT-MCF112 Series
AT-PBC18
AT-PB13
AT-PB14
AT-PB15
AT-PB101
AT-PB102
AT-PB103/1
AT-PB103/2
AT-PB201
AT-PB202
AT-PB202/1
AT-PB202/3
AT-PB202/4
AT-PB301
AT-PB1001/I
AT-PB1001/3

MODULAR LAYER 3+ SWITCHES

AT-SB4104 (AC)
AT-SB4104 (DC)*
AT-SB4108

NETWORK SERVICE MODULES (NSM)

AT-AR040
AT-AR041
AT-AR042

OPTIONAL

FAST ETHERNET EXPANSION MODULES (UPLINK MODULES)

AT-A16
AT-A17
AT-A17
AT-A18
AT-A45
AT-A46
AT-A47

PORT INTERFACE CARDS (PICS)

AT-AR020
AT-AR021S
AT-AR021U
AT-AR022
AT-AR023
AT-AR024
AT-AR026

POWER ACCESSORIES

AT-BRPS8000
AT-PBPWRAC
AT-PWR8000
AT-RPS740
AT-RPS8000

ROUTERS

AT-AR300
AT-AR300L
AT-AR320
AT-AR350
AT-AR370S
AT-AR370U
AT-AR410
AT-AR410 (V2)
AT-AR720
AT-AR725
AT-AR725
(-48VDC)
AT-AR740
AT-AR740
(-48VDC)
AT-AR745
AT-AR745
(-48VDC)

STACKING MODULES

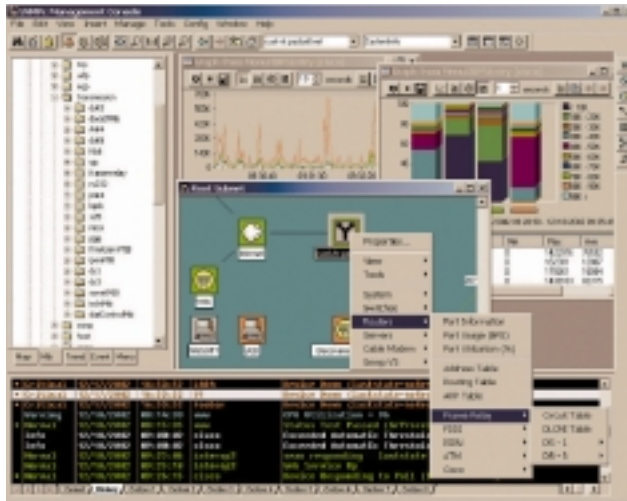
AT-BSTACK1
AT-STACKM

* AT-View Plus 2.1 only

Castle Rock SNMPc 6.0

Network Management Software

Scalable, distributed management suite for managing small to large sized networks. Supports AT-View Plus.



SNMPc Enterprise

Up to 25,000 nodes

Windows XP/2000/NT Recommended

E-mail/pager event notification, advanced event actions, sophisticated trend reporting, full RMON-1 application and more make SNMPc Enterprise edition a powerful tool for managing large, distributed networks.

SNMPc WorkGroup

Up to 1,000 nodes

Windows XP/2000/NT/ME/98

Leverage many of the same features as the Enterprise edition in this affordable version of SNMPc, designed for a single user managing a small to medium sized network.

ORDERING INFORMATION

AT-VIEWPLUSV2-EU

Java Based Object Manager Network management system v2.0 - Full version

Includes Silver Software Support Program 1 year

AT-VIEWPLUSUPG-SSI

Upgrade from ATVP 1.4 to ATVP 2.0. Active software support required

AT-SNMPcWKGPV6

Castle Rock SNMPc Workgroup Edition, Ver. 6.0 - Windows support

AT-SNMPc-WKGRP UPG

Castle Rock SNMPc Workgroup Edition, Ver. 6.0 UPGRADE ONLY

Purchase proof SNMPc required

AT-SNMPcCENTV6WKGPUPGD

CastleRock SNMPc Workgroup to Enterprise upgrade

AT-SNMPcCENTV6

Castle Rock SNMPc Enterprise Edition Ver. 6.0, including Remote Console and Remote Poller

AT-SNMPcCENTV6RAX

Castle Rock SNMPc Remote Access Console (Java + unlimited logins)

AT-SNMPcCENTXTSW

CastleRock SNMPc Enterprise upgrade to EnterpriseV6

AT-VPSNMPcWKGP-SSI-EU

Bundle Package Object Network management system:

AT-View Plus 2.0 + SNMPc Workgroup 6.0.

Includes Silver Software Support Program 1 year for AT-VIEW PLUS product only

AT-VPSNMPcCENT-SSI-EU

Bundle Package Object Network management system:

AT-View Plus 2.0 + SNMPc Enterprise 6.0.

Includes Silver Software Support Program 1 year for AT-VIEW PLUS product only

AT-AR01x & AT-AR06x

Hardware Enabled Encryption and Compression Cards

AT-AR011i	Encryption DES, 3DES & HMAC + Compression Card
AT-AR061	Encryption DES, 3DES & HMAC + Compression high performance Card

Encryption features

- Dedicated processor based 56-bit key DES (Data Encryption Standard) Cipher Block Chaining Mode algorithm
- Unaffected by the U.S. State Department 'Key Recovery System' which requires key encryption details to be lodged with a third party organisation
- Encryption keys created by cryptographically secure hardware generator
- Key management and distribution:
 - Network key
 - 160 master key table
 - Session key

Authentication

- 128-bit key MD5

Compression features

- STACKER LZS adaptive loss-less data compression
- Compatible with Network iQ software compression
- Up to 8:1 data compression for high-speed file transfer
- FIPS PUB46
- ISO DEA-1
- ANSI X3.92

Accelerator Card compatibility:

	AT-AR011i-ECMAC	AT-AR061-ECPAC
AT-AR3xx	●	
AT-AR410	●	
AT-AR720	●	
AT-AR725		●
AT-AR740	●	●
AT-AR745		●
Rapier 24/24i		●
Rapier 16f/16fi		●

All Allied Telesyn encryption products are subject to Export Approval restrictions and should not be re-exported without the approval of the appropriate national government authority. Allied Telesyn encryption products are available via accredited security partners.

Type of encryption and hashing mode supported by accelerator cards:

		AT-AR011i-ECMAC	AT-AR061-ECPAC
Compression	LZS	Hw	Hw
Encryption	DES CBC	Hw	Hw
	3DES2Key	Hw	Hw
	3DESInner	Hw	Hw
	3DESOuter	Hw	Hw
HMAC Hashing	HMAC-DESMAC	Hw	Hw
	HMAC-MD5	Hw	Hw
	HMAC-SHA-1	Hw	Hw

Encrypted Channel supported by EMAC and PAC accelerator card:

	AT-AR011i	AT-AR061
AT-AR3xx	511	
AT-AR4xx	1.024	
AT-AR7xx	1.024	1.024
Rapier 16/24i		2.048

AlliedWare™

Layer 3 Fully Featured Operating System

AlliedWare™ is Allied Telesyn's operating system, which supports the range of routing and switching products. AlliedWare™ consists of a core set of features with the added flexibility of having the ability to upgrade through purchasing upgrade bundles as outlined in this catalogue.

Features of Basic AlliedWare™

FEATURE	AR300	AR400	AR700	RAPIER	RAPIER i	9800
Generic Attribution Registration Protocol (GARP)				●	●	●
General Packet Classifier				●	●	●
Quality of Service					●	●
Point-to-Point Protocol (PPP)	●	●	●	●	●	●
PPPoE	●	●	●	●	●	●
Frame Relay	●	●	●	●	●	
Integrated Services Digital Network (ISDN)	●	●	●	●	●	
X.25	●	●	●	●	●	
Synchronous Tunnelling	●	●	●	●	●	
Internet Protocol (IP)	●	●	●	●	●	●
IP Multicasting	●	●	●	●	●	●
Novell IPX	●	●	●			●
DECnet	●	●	●			
Terminal Server	●	●	●	●	●	
Printer Server	●	●	●	●	●	
RIP	●	●	●	●	●	●
Open Shortest Path First (OSPF)	●	●	●	●	●	●
Bridging	●	●	●			
Test Facility	●	●	●	●	●	●
Network Time Protocol (NTP)	●	●	●	●	●	●
Asynchronous Call Control (ACC)	●	●	●	●	●	
Generic Routing Encapsulation	●	●	●	●	●	●
Trigger Facility	●	●	●	●	●	●
AppleTalk	●	●	●			
Time Division Multiplexing (TDM)	●	●	●	●	●	
Logging Facility	●	●	●	●	●	●
Scripting	●	●	●	●	●	●
Telephony Services	●					
HTTP Server	●	●	●	●	●	●
HTTP Client	●	●	●	●	●	●
TFTP Client	●	●	●	●	●	●
TCP	●	●	●	●	●	●
Command Line Interface (CLI)	●	●	●	●	●	●
Graphical User Interface (GUI)		●	●	●	●	●
VLAN		●		●	●	●
STP				●	●	●
RSTP				●	●	●
Dynamic Host Configuration Protocol (DHCP)	●	●	●	●	●	●
Layer 2 Tunnelling Protocol (L2TP)	●	●	●	●	●	●
Simple Network Management Protocol (SNMP)	●	●	●	●	●	●
Transaction Packet Assembler Disassembler (TPAD)	●	●	●	●	●	
Resource Reservation Protocol (RSVP)	●	●	●			
Encryption Service	●	●	●	●	●	
Compression Service	●	●	●	●	●	●
IP Security (IPSec)	●	●	●	●	●	
Virtual Router Redundancy Protocol (VRRP)	●	●	●	●	●	
Open Systems Interconnection (OSI)	●	●	●			
Secure Sockets Layer (SSL)		●	●	●	●	●
Internet Group Management Protocol (IGMP)	●	●	●	●	●	●
IGMP PROXY	●	●	●	●	●	
PIM-SM	●	●	●			
PIM-DM	●	●	●			
DVMRP	●	●	●			
ISAKMP	●	●	●	●	●	●
Compact Flash			●			●
Secure Shell (SSH)	●	●	●	●	●	●

Features option description

Novell IPX	Connectionless datagram protocol based as the transport mechanism.
AppleTalk	From within the Macintosh desktop environment, AppleTalk provides internetworking for Macintosh computers and other peripheral devices using LocalTalk media.
RSVP	Signalling protocol designed to provide guaranteed QoS (Quality of Service) for network traffic. To allow hosts and applications that do not support RSVP to take advantage of RSVP services, AlliedWare™ implements a RSVP proxy agent.
DVMRP	Internet routing protocol that provides an efficient mechanism for connectionless datagram delivery to a group of hosts across an internetwork. It is a distributed protocol that dynamically generates IP Multicast delivery trees using a technique called Reverse Path Multicasting (RPM).
PIM-DM	PIM Dense Mode is similar to DVMRP in that it employs the RPM algorithm. However, the differences between PIM-DM and DVMRP are: PIM-DM relies on the presence of an existing unicast routing protocol to provide routing table information to build up information for the multicast forwarding database, but it is independent of the mechanisms of the specific unicast routing protocol. In contrast, DVMRP contains an integrated routing protocol that makes use of its own RIP-like exchanges to compute the required unicast information. Unlike DVMRP, PIM-DM simply forwards multicast traffic on all downstream interfaces until explicit prune (un-join) messages are received. PIM-DM accepts the overhead of broadcast-and-prune in the interests of simplicity and flexibility and of eliminating routing protocol dependencies.
PIM-SM	PIM Sparse Mode provides efficient communication between members of sparsely distributed groups — the type of groups that are most common in wide-area internetworks. PIM-SM is designed to limit multicast traffic so that only those network devices interested in receiving traffic for a particular group receive the traffic.
IGMP	Protocol used between hosts and multicast routers and switches on a single physical network to establish hosts' membership in particular multicast groups. Multicast routers use this information, in conjunction with a multicast routing protocol, to support IP multicast forwarding across the Internet.
IPv6	The next generation of the Internet protocol (IP). It has primarily been developed to solve the problem of the eventual exhaustion of the IPv4 address space, but also offers other enhancements: - Addresses are 16 bytes long in contrast to IPv4's 4 byte addresses. - Globally unique addresses with more levels of addressing hierarchy, to reduce the size of routing tables. - Auto-configuration of addresses by hosts. - Improved scalability of multicast routing, by adding a 'scope' field to multicast addresses. - A new type of address, the 'anycast address,' which is used to send a packet to any one of a group of devices.
BGP-4	External gateway protocol which allows two routers in different routing domains, known as Autonomous Systems (AS), to exchange routing information, thereby facilitating the forwarding of data across the border of the routing domains. BGP allows routers to learn multiple paths, choose the best path for routing information and install that path in the IP routing table.
IS-IS	Intermediate-to-Intermediate System is an OSI routing protocol for dynamic routing between intermediate and end network devices.
Firewall	Security device designed to allow safe access to the Internet by enforcing a set of access rules between various interfaces. A firewall typically has two interfaces, one that is attached to the public network (Internet) and one that is attached to an internal private network (intranet). The firewall prevents unrestricted access to the private network and protects the computer systems behind the firewall from attack.

AlliedWare™

Layer 3 Fully Featured Operating System

Features option availability

	BASIC L2/L3	FULL L3	ADVANCED L3	SECURITY
AR300 Series	Basic AlliedWare™ features ships with the product	N/A	N/A	Firewall SMTP Proxy HTTP Proxy
AR400 Series	Basic AlliedWare™ features ships with the product	N/A	IPv6 BGP4 Loadbalancing	Firewall SMTP Proxy HTTP Proxy
AR700 Series	Basic AlliedWare™ features ships with the product	N/A	IPv6 BGP4 Loadbalancing	Firewall SMTP Proxy HTTP Proxy
Rapier Series	Basic AlliedWare™ features ships with the product	IPX Routing AppleTalk RSVP DVMRP PIM DM PIM SM	IPv6 BGP4 Loadbalancing	Firewall SMTP Proxy HTTP Proxy
9800 Series	Basic AlliedWare™ features ships with the product	AppleTalk RSVP VRRP DVMRP PIM DM PIM SM	IPv6 BGP4 OSI Loadbalancing	Firewall SMTP Proxy HTTP Proxy

Advanced features order option

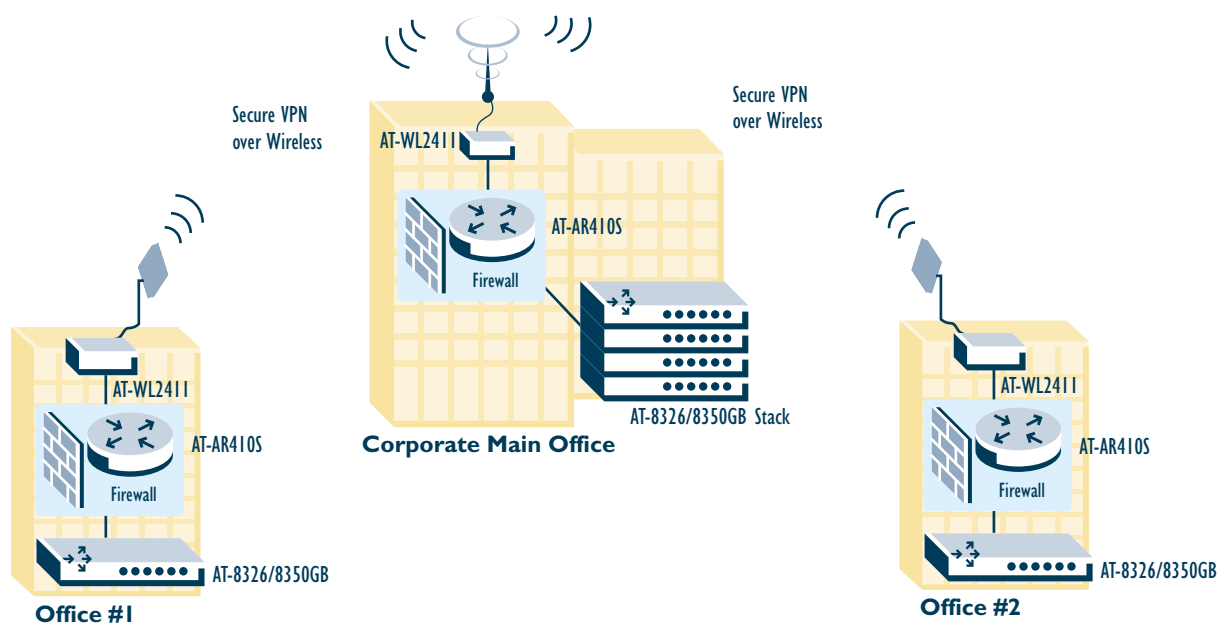
AT-ARRPFL3UPGRD	Rapier™ Full Layer 3 Upgrade	AT-AR300v2SecPk-00	AR300 series Security Pack Upgrade*
AT-AR9800FL3UPGRD	9800 series Full Layer 3 Upgrade	AT-AR400sSecPk-00	AR400 series Security Pack Upgrade
AT-AR400-ADVL3UPGRD	AR400 series Advanced Layer 3 Upgrade	AT-AR700sSecPk-00	AR700 series Security Pack Upgrade
AT-AR700-ADVL3UPGRD	AR700 series Advanced Layer 3 Upgrade	AT-RPsecPk-00	Rapier™ Layer 3 Switch Security Pack Upgrade
AT-RPADVL3UPGRD	Rapier™ series Advanced Layer 3 Upgrade	AT-9800SecPk-00	9800 series Layer 3 Switch Security Pack Upgrade
AT-9800ADVL3UPGRD	9800 series Advanced Layer 3 Upgrade	* only the AR300 V2 can support this option, please check with your sales representative in advance	

9

Wireless Solutions

Allied Telesyn's Wireless products provide the customer with the highest performance and highest compliancy to standards today, for unmatched investment protection in the wireless marketplace. All of Allied Telesyn's wireless solutions have 'best of breed' performance, especially where security features and authentication protocols are required for network robustness. Advanced software features and a broad range of accessories provide high-end functionality from SoHo to enterprise class networks.

EXAMPLE: 'WIRE-FREE' NETWORK INTERCONNECTIONS



A corporation has several large offices in the city centre within proximity of each other and needs to find the most cost-effective method of interconnecting them. Leased line services are expensive and dial-up services don't support bandwidth requirement. Further investigations confirmed that line-of-sight between offices is achievable and that access to roof-tops for mounting antennae is available. Going wireless between these sites was the obvious choice as it offered high-bandwidth, only involved a one-off set-up cost with no recurring fees and didn't require any licensing.

AT-WL2411 WiFi access points with different antennae options are deployed in Point-to-Multipoint topology to provide the connections over radio waves. Depending on specific environments, multiples of E1-like performance can be achieved on such links. To secure the connections from eavesdropping, IPSec 3DES encryption is implemented over the wireless connection by deploying AT-AR410 routers, configured with the VPN option, behind each Access Point.

Wireless Series

Wireless LAN Solutions

AT-WA3404

SOHO wireless access point
10/100TX x 4 ports

Features

- 64-bit or 128-bit WEP encryption
- Supports up to 64 simultaneous users
- MAC address filtering
- SNMP management

TWO YEAR WARRANTY



AT-WA7500

Enterprise wireless a,b,g access point (indoor)

AT-WA7501

Enterprise wireless a,b,g access point
with IP54 enclosure (outdoor)
10/100TX x 1 port

Features

- Secure information transmission with 40-128 bit Wired Equivalent Privacy (WEP) data encryption
- In excess of 153 metres transmission distances
- IP Tunnelling
- Wireless bridging
- Telnet and SNMP web GUI management
- Long range antennas available
- Dual speed access point
- Dual radio slot
- 802.11a, 802.11b, 802.11g and 802.11i standard support
- IP54 enclosure (AT-WA7501 only)

TWO YEAR WARRANTY



AT-WCL007

PCI adapter wireless client

Features

- 64-bit or 128-bit WEP encryption
- 802.1x and RC4 authentication
- Additional external antenna (option)
- Supports all popular operating systems
- Auto-configures for use in multiple countries
- PC Card type

TWO YEAR WARRANTY



AT-WCL452

Wireless radio

Features

- 64-bit or 128-bit WEP encryption
- Supports all popular operating systems
- Auto-configures for use in multiple countries
- PC Card (PCMCIA) type II design

LIFETIME WARRANTY



AT-WCL460

USB adapter wireless client

Features

- 64-bit or 128-bit WEP encryption
- 802.1x and RC4 authentication
- Supports all popular operating systems
- Auto-configures for use in multiple countries
- USB adapter

TWO YEAR WARRANTY

MODEL	DIMENSIONS	WEIGHT
AT-WA3404	N/A	N/A
AT-WA7500	25cm x 15.9cm x 3.8cm	.625kg
AT-WCL007	1.3cm x .9cm	.2kg
AT-WCL452	12cm x 5.4cm x .8cm	.25kg
AT-WCL460	10.1cm x 3cm x 1.6cm	.027kg

Wireless Series

Wireless LAN Solutions

AT-WL2411

Enterprise wireless access point

Features

- Secure information transmission with 40-128 bit Wired Equivalent Privacy (WEP) data encryption
- Standards based 802.11b connectivity
- In excess of 153 metres transmission distances
- Light weight and compact size
- IP Tunnelling
- Wireless bridging
- Telnet and SNMP web GUI management
- Long range antennas available

TWO YEAR WARRANTY

**AT-WM3400**

Wireless-Ethernet media converter

Features

- Wireless access through a PC's RJ45 Ethernet connection
- 64-bit or 128-bit WEP encryption

TWO YEAR WARRANTY

Refer to the 'Wire-free Network Interconnections' diagram on page 44 for an example of wireless networking.

Wireless ETSI compliant Antennas

- AT-INT71489 Diversity Antenna 2.4GHz with Radial connector, Azimuth plane 360° - Vertical plane 50°
- AT-INT70141 Antenna 2.4GHz, 3dBi, Mini Flat, Azimuth plane 360° - Vertical plane 180°
- AT-INT63363 Antenna 2.4GHz, 5dBi, Omni, Azimuth plane 360° - Vertical plane 30°
- AT-INT065349 Antenna 2.4GHz, 9dBi, Omni, Azimuth plane 360° - Vertical plane 14°

Wireless FCC compliant Antennas

- AT-INT71121 Diversity Antenna 2.4GHz, 3dBi, drop ceiling installation
- AT-INT67262 Antenna 2.4GHz, 5dBi, Dual Flat, Azimuth plane 60° - Vertical plane 30°
- AT-INT67263 Antenna 2.4GHz, 5dBi, Flat panel, Azimuth plane 60° - Vertical plane 80°
- AT-INT71122 Antenna 2.4GHz, 9dBi, Corner Reflector, Azimuth plane 65° - Vertical plane 75°
- AT-INT63366 Antenna 2.4GHz, 14dBi, Flat panel, Azimuth plane 30° - Vertical plane 30°
- AT-INT063365 Antenna 2.4GHz, 15dBi, Yagi directive, Azimuth plane 34° - Vertical plane 30°

Wireless Antenna accessories

- AT-INT069887 Cable assembly from access point to N receptacle
- AT-INT70403 Cable assembly from access point to N plug
- AT-INT064616 Coax cable assembly N to N connector, 75cm
- AT-INT063245 Coax cable assembly N to N connector, 150cm
- AT-INT063246 Coax cable assembly N to N connector, 600cm
- AT-INT71179 Coax cable assembly N to N connector, 900cm
- AT-INT69893 AP Power Supply holder kit
- AT-INT069888 Bracket for Dual Mounting Antenna
- AT-INT63198 Antenna cable splitter 2.4GHz
- AT-INT586610 Lightning suppressor spare/replacement capsule
- AT-INT61868 Lightning suppressor

Power over Ethernet system

- AT-INT071620 1 port Mobile LAN Power bridge
- AT-INT071578 6 port Mobile LAN Power bridge
- AT-INT071579 12 port Mobile LAN Power bridge
- AT-INT071581 Power over Ethernet splitter



MODEL	DIMENSIONS	WEIGHT
AT-WL2411	15cm x 9.3cm x 3.5cm	.25kg
AT-WM3400	N/A	N/A

page 47

The diagram illustrates the network architecture for the AT-8326GB project. It features a central BASE HQ with two AT-SB4108 Modular multi-layer core switches. These switches are connected to an AT-9812T Server Farm and an AT-View Plus / HP OpenView Management Platform. The network is distributed to four units: Training Unit, Medical Unit, Maintenance Unit, and Depot. Each unit contains an AT-8326GB Stack and a Rapier G6f or Rapier G6 switch. The units are interconnected via 1000Mbps links and 2km multi-mode fibre.

support@alliedtelesyn.com

MEDIA CONVERTER SELECTOR

Standalone/Rackmountable & Wall-mounted Media Converters

GIGABIT ETHERNET STANDALONE/RACKMOUNTABLE MEDIA CONVERTERS

1000Mbps fibre multi-mode extender >>>	AT-EX1002SC/GMI	1000SX/SC x 1 port multi-mode Ext. SC x 1 port	2km	50
1000Mbps fibre multi-mode to single-mode >>>	AT-MC1001	1000SX (SC multi-mode) to 1000LX (SC single-mode)	10km	51
	AT-MC1001SC/GS2	1000SX (SC multi-mode) to 1000LX (SC single-mode)	20km	51
	AT-MC1001SC/GS3	1000SX (SC multi-mode) to 1000LX (SC single-mode)	50km	51
	AT-MC1001SC/GS4	1000SX (SC multi-mode) to 1000LX (SC single-mode)	70km	51
1000Mbps copper to fibre multi-mode >>>	AT-MC1004	1000T to 1000SX (SC multi-mode)	220-550m	51
1000Mbps copper to fibre single-mode >>>	AT-MC1005/1	1000T to 1000LX (SC single-mode)	10km	51
	AT-MC1005/2	1000T to 1000LX (SC single-mode)	20km	51
	AT-MC1005/3	1000T to 1000LX (SC single-mode)	50km	51
	AT-MC1005/4	1000T to 1000LX (SC single-mode)	70km	51

FAST ETHERNET STANDALONE/RACKMOUNTABLE MEDIA CONVERTERS

100Mbps fibre multi-mode to single-mode >>>	AT-MC104XL	100FX (SC multi-mode) to 100FX (SC single-mode)	15km	51
	AT-MC104LH	100FX (SC multi-mode) to 100FX (SC single-mode longhaul)	40km	51
	AT-MC104SC/FS3	100FX (SC multi-mode) to 100FX (SC single-mode longhaul)	75km	51
	AT-MC104SC/FS4	100FX (SC multi-mode) to 100FX (SC single-mode longhaul)	100km	51
100Mbps copper to fibre multi-mode >>>	AT-MC115XL	10/100TX to 10FL/100SX (ST multi-mode 850nm)	300m	51
	AT-MC116XL	10/100TX to 10FL/100SX (SC multi-mode 850nm)	300m	51
	AT-MC101XL	100TX to 100FX (ST multi-mode)	2km	51
	AT-MC102XL	100TX to 100FX (SC multi-mode)	2km	51
100Mbps copper to fibre single-mode >>>	AT-MC103XL	100TX to 100FX (SC single-mode)	15km	51
	AT-MC103LH	100TX to 100FX (SC single-mode longhaul)	40km	51
	AT-MC103SC/FS3	100TX to 100FX (SC single-mode longhaul)	75km	51
	AT-MC103SC/FS4	100TX to 100FX (SC single-mode longhaul)	100km	51

ETHERNET STANDALONE/RACKMOUNTABLE MEDIA CONVERTERS

10Mbps copper to fibre multi-mode >>>	AT-MC13	10T to 10FL (ST multi-mode)	2km	51
	AT-MC14	10T to 10FL (SC multi-mode)	2km	51
10Mbps copper to copper >>>	AT-MC15	10T to BNC	185m	51

FAST ETHERNET SPEED/MEDIA CONVERTING SWITCHES

100Mbps copper to fibre multi-mode >>>	AT-FS201	10/100TX to 100FX (ST multi-mode)	2km	52
	AT-FS202	10/100TX to 100FX (SC multi-mode)	2km	52
100Mbps copper to fibre single-mode >>>	AT-FS202SC/FS1	10/100TX to 100FX (SC single-mode)	15km	52
	AT-FS202SC/FS2	10/100TX to 100FX (SC single-mode)	40km	52
	AT-FS202SC/FS3	10/100TX to 100FX (SC single-mode)	75km	52
	AT-FS202SC/FS4	10/100TX to 100FX (SC single-mode)	100km	52
100Mbps copper to copper >>>	AT-FS203	10/100TX to 10/100TX	—	52
100Mbps copper to fibre >>>	AT-FS232/FS1	10/100TX to 100FX (SC)	15km	52
	AT-FS232/FS2	10/100TX to 100FX (SC)	40km	52
	AT-FS232/FS3	10/100TX to 100FX (SC)	75km	52
	AT-FS232/FS4	10/100TX to 100FX (SC)	100km	52
100Mbps copper to single fibre >>>	AT-FS237/FS1	10/100TX to 100FX (single-mode)	15km	52
	AT-FS237/FS2	10/100TX to 100FX (single-mode)	40km	52
	AT-FS237/FS3	10/100TX to 100FX (single-mode)	75km	52
	AT-FS237/FS4	10/100TX to 100FX (single-mode)	100km	52
	AT-FS238/FS1	10/100TX to 100FX (single-mode)	15km	52
	AT-FS238/FS2	10/100TX to 100FX (single-mode)	40km	52
	AT-FS238/FS3	10/100TX to 100FX (single-mode)	75km	52
	AT-FS238/FS4	10/100TX to 100FX (single-mode)	100km	52

NOTE - All media converters listed above (excluding AT-EX1002SC/GMI) can be used in the **AT-MC12**, 12 slot rackmount chassis. 50

FAST ETHERNET WALL-MOUNTED SPEED/MEDIA CONVERTING SWITCHES

100Mbps copper to fibre multi-mode >>>	AT-FS211	10/100TX to 100FX (ST multi-mode)	2km	52
	AT-FS212	10/100TX to 100FX (SC multi-mode)	2km	52
100Mbps copper to fibre single-mode >>>	AT-FS212/1	10/100TX to 100FX (SC single-mode)	15km	52
	AT-FS212/2	10/100TX to 100FX (SC single-mode longhaul)	40km	52
	AT-FS212/3	10/100TX to 100FX (SC single-mode longhaul)	70km	52
	AT-FS212/4	10/100TX to 100FX (SC single-mode longhaul)	90km	52
10/100Mbps copper to 100Mbps fibre multi-mode >>>	AT-FS214	10/100TX to 100FX (MT-RJ multi-mode)	2km	52
	AT-FS215	10/100TX to 100FX (VF-45 multi-mode)	2km	52
	AT-FS216	10/100TX to 100FX (LC multi-mode)	2km	52

Multi-channel Media Converters

FAST ETHERNET MULTI-CHANNEL MEDIA CONVERTERS

6 port 100Mbps copper to fibre multi-mode > > >	AT-MCF106/ST	100TX x 6 ports to 100FX x 6 ports (ST multi-mode)	2km	53
	AT-MCF106/SC	100TX x 6 ports to 100FX x 6 ports (SC multi-mode)	2km	53
	AT-MCF106/VF	100TX x 6 ports to 100FX x 6 ports (VF-45 multi-mode)	2km	53
6 port 100Mbps copper to fibre single-mode > > >	AT-MCF106/SM	100TX x 6 ports to 100FX x 6 ports (SC single-mode)	15km	53
	AT-MCF106/LH	100TX x 6 ports to 100FX x 6 ports (SC single-mode longhaul)	40km	53
12 port 100Mbps copper to fibre multi-mode > > >	AT-MCF112/ST	100TX x 12 ports to 100FX x 12 ports (ST multi-mode)	2km	53
	AT-MCF112/SC	100TX x 12 ports to 100FX x 12 ports (SC multi-mode)	2km	53
	AT-MCF112/VF	100TX x 12 ports to 100FX x 12 ports (VF-45 multi-mode)	2km	53
12 port 100Mbps copper to fibre single-mode > > >	AT-MCF112/SM	100TX x 12 ports to 100FX x 12 ports (SC single-mode)	15km	53
	AT-MCF112/LH	100TX x 12 ports to 100FX x 12 ports (SC single-mode longhaul)	40km	53

ETHERNET MULTI-CHANNEL MEDIA CONVERTERS

6 port 10Mbps copper to fibre multi-mode > > >	AT-MCF06/ST	10T x 6 ports to 10FL x 6 ports (ST multi-mode)	2km	53
	AT-MCF06/SC	10T x 6 ports to 10FL x 6 ports (SC multi-mode)	2km	53
6 port 10Mbps copper to fibre single-mode > > >	AT-MCF06/SM	10T x 6 ports to 10FL x 6 ports (ST single-mode)	15km	53
12 port 10Mbps copper to fibre multi-mode > > >	AT-MCF12/ST	10T x 12 ports to 10FL x 12 ports (ST multi-mode)	2km	53
	AT-MCF12/SC	10T x 12 ports to 10FL x 12 ports (SC multi-mode)	2km	53
12 port 10Mbps copper to fibre single-mode > > >	AT-MCF12/SM	10T x 12 ports to 10FL x 12 ports (ST single-mode)	15km	53

PowerBlade

GIGABIT ETHERNET MEDIA CONVERSION BLADES

1000Mbps fibre multi-mode to single-mode > > >	AT-PB1001/1	1000SX (SC multi-mode) to 1000LX (SC single-mode)	10km	50
	AT-PB1001/2	1000SX (SC multi-mode) to 1000LX (SC single-mode)	20km	50
	AT-PB1001/3	1000SX (SC multi-mode) to 1000LX (SC single-mode)	50km	50
	AT-PB1001/4	1000SX (SC multi-mode) to 1000LX (SC single-mode)	70km	50
1000Mbps copper to fibre GBIC > > >	AT-PB1005G	1000T to 1000SX/LX GBIC	220m - 70km	50

FAST ETHERNET MEDIA CONVERSION BLADES

100Mbps copper to fibre multi-mode > > >	AT-PB101	100TX to 100FX (ST multi-mode)	2km	50
	AT-PB102	100TX to 100FX (SC multi-mode)	2km	50
	AT-PB301	100TX to 100FX (VF-45 multi-mode)	2km	50
	AT-PB302	100TX to 100FX (MT-RJ multi-mode)	2km	50
100Mbps copper to fibre single-mode > > >	AT-PB103/1	100TX to 100FX (SC single-mode)	15km	50
	AT-PB103/2	100TX to 100FX (SC single-mode longhaul)	40km	50
	AT-PB103/3	100TX to 100FX (SC single-mode longhaul)	75km	50
	AT-PB103/4	100TX to 100FX (SC single-mode longhaul)	100km	50

ETHERNET MEDIA CONVERSION BLADES

10Mbps copper to fibre multi-mode > > >	AT-PB13	10T to 10FL (ST multi-mode)	2km	50
	AT-PB14	10T to 10FL (SC multi-mode)	2km	50
10Mbps copper to copper > > >	AT-PB15	10T to BNC	185m	50

FAST ETHERNET SPEED/MEDIA CONVERSION SWITCHING BLADES

10/100Mbps copper to 100Mbps fibre multi-mode > > >	AT-PB201	10/100TX to 100FX (ST multi-mode)	2km	50
	AT-PB202	10/100TX to 100FX (SC multi-mode)	2km	50
	AT-PB204	10/100TX to 100FX (MT-RJ multi-mode)	2km	50
	AT-PB205	10/100TX to 100FX (VJ-45 multi-mode)	2km	50
10/100Mbps copper to 100Mbps fibre single-mode > > >	AT-PB202/1	10/100TX to 100FX (SC single-mode)	15km	50
	AT-PB202/2	10/100TX to 100FX (SC single-mode)	40km	50
	AT-PB202/3	10/100TX to 100FX (SC single-mode)	70km	50
	AT-PB202/4	10/100TX to 100FX (SC single-mode)	90km	50

NOTE - The media conversion blades listed above are designed to be used with/in the **AT-PBC18**, manageable rackmount chassis.



POWERBLADE

Manageable Media Conversion System

AT-PBC18 18 slot rackmount chassis

Features

- Designed to NEBS Compliance
- Optional Telnet and SNMP management

TWO YEAR WARRANTY



Allied Telesyn standards-based Gigabit Interface Converters (GBIC) modules

AT-G8TP	1000T x 1 port	100m
AT-G8SX	1000SX x 1 port	550m
AT-G8LX10	1000LX x 1 port	10km
AT-G8LX25	1000LX x 1 port	25km
AT-G8LX40	1000LX x 1 port	40km
AT-G8LX70	1000LX x 1 port	70km



Telnet and SNMP management module and redundant power module for PowerBlade™

AT-PBM02	RS232 x 1 port, 10T x 1 port
AT-PBPWRAC	Redundant AC power supply option
AT-PBPWRDC	-48VDC power supply option

Gigabit Ethernet Media Conversion Blade

AT-PB1001/1	1000SX (SC multi-mode) to 1000LX (SC single-mode)	10km
AT-PB1001/2	1000SX (SC multi-mode) to 1000LX (SC single-mode)	20km
AT-PB1001/3	1000SX (SC multi-mode) to 1000LX (SC single-mode)	50km
AT-PB1001/4	1000SX (SC multi-mode) to 1000LX (SC single-mode)	70km
AT-PB1005G	1000T to 1000SX/LX GBIC	220m - 70km



Fast Ethernet Media Conversion Blades

AT-PB101	100TX to 100FX (ST multi-mode)	2km
AT-PB102	100TX to 100FX (SC multi-mode)	2km
AT-PB103/1	100TX to 100FX (SC single-mode)	15km
AT-PB103/2	100TX to 100FX (SC single-mode longhaul)	40km
AT-PB103/3	100TX to 100FX (SC single-mode longhaul)	75km
AT-PB103/4	100TX to 100FX (SC single-mode longhaul)	100km
AT-PB301	100TX to 100FX (VF-45 multi-mode)	2km
AT-PB302	100TX to 100FX (MT-RJ multi-mode)	2km

Fast Ethernet Speed/Media Conversion Switching Blades

AT-PB201	10/100TX to 100FX (ST multi-mode)	2km
AT-PB202	10/100TX to 100FX (SC multi-mode)	2km
AT-PB202/1	10/100TX to 100FX (SC single-mode)	15km
AT-PB202/2	10/100TX to 100FX (SC single-mode)	40km
AT-PB202/3	10/100TX to 100FX (SC single-mode)	70km
AT-PB202/4	10/100TX to 100FX (SC single-mode)	90km
AT-PB204	10/100TX to 100FX (MT-RJ multi-mode)	2km
AT-PB205	10/100TX to 100FX (VJ-45 multi-mode)	2km

Ethernet Media Conversion Blades

AT-PB13	10T to 10FL (ST multi-mode)	2km
AT-PB14	10T to 10FL (SC multi-mode)	2km
AT-PB15	10T to BNC	185m

LIFETIME WARRANTY

AT-MCR12

12 Slot Media Conversion Rackmount Chassis

AT-MCR12 12 slot rackmount chassis

Features

- Holds up to 12 Allied Telesyn media or 10/100Mbps converters
- 10Mbps, 100Mbps and 1000Mbps media converters, as well as two-port switches, can be mounted in any combination
- Optional redundant hot-swappable power supply
- Fits into a standard 19-inch network rack

LIFETIME WARRANTY Two years on PSU



Redundant power module for the AT-MCR12

AT-PWR4	Redundant power supply option
AT-PWR9	-48VDC power supply option

AT-EX1000

Gigabit Ethernet Media Converters

AT-EX1002SC/GM1 1000SX/SC x 1 port multi-mode Extend (SC) x 1 port 2km

Features

- Compact, standalone chassis
- Extends Gigabit Ethernet to 2km on multi-mode fibre
- Significant cost saving using multi-mode vs single-mode fibre cabling
- Gigabit deployment over legacy FDDI multi-mode fibre cabling
- Must be connected in pairs (one device on each end of the extended multi-mode fibre)

LIFETIME WARRANTY

MODEL	DIMENSIONS	WEIGHT
AT-PBC18 chassis	44cm x 47cm x 11cm	9.1kg
Blades	20cm x 10cm x 2.3cm	.14kg
AT-MCR12	44cm x 22cm x 13cm	9.5kg
EX1000 series	20cm x 16cm x 3.8cm	1.3kg

MC1000 Series

Gigabit Ethernet Media Converters



AT-MC1001	1000SX (SC multi-mode) to 1000LX (SC single-mode)	10km
AT-MC1001SC/GS2	1000SX (SC multi-mode) to 1000LX (SC single-mode)	20km
AT-MC1001SC/GS3	1000SX (SC multi-mode) to 1000LX (SC single-mode)	50km
AT-MC1001SC/GS4	1000SX (SC multi-mode) to 1000LX (SC single-mode)	70km
AT-MC1004	1000T to 1000SX (SC multi-mode)	220-550m
AT-MC1005/1	1000T to 1000LX (SC single-mode)	10km
AT-MC1005/2	1000T to 1000LX (SC single-mode)	20km
AT-MC1005/3	1000T to 1000LX (SC single-mode)	50km
AT-MC1005/4	1000T to 1000LX (SC single-mode)	70km

Common features of the MC1000 series

- Support for multi-mode and single-mode fibre full-duplex
- Fits the AT-MCR12 rackmount chassis

LIFETIME WARRANTY

MC100 Series

Fast Ethernet Media Converters

AT-MC101XL	100TX to 100FX (ST multi-mode)	2km
AT-MC102XL	100TX to 100FX (SC multi-mode)	2km
AT-MC103XL	100TX to 100FX (SC single-mode)	15km
AT-MC103LH	100TX to 100FX (SC single-mode longhaul)	40km
AT-MC103SC/FS3	100TX to 100FX (SC single-mode longhaul)	75km
AT-MC103SC/FS4	100TX to 100FX (SC single-mode longhaul)	100km
AT-MC104XL	100FX (SC multi-mode) to 100FX (SC single-mode)	15km
AT-MC104LH	100FX (SC multi-mode) to 100FX (SC single-mode longhaul)	40km
AT-MC104SC/FS3	100FX (SC multi-mode) to 100FX (SC single-mode longhaul)	75km
AT-MC104SC/FS4	100FX (SC multi-mode) to 100FX (SC single-mode longhaul)	100km
AT-MC115XL	10/100TX to 10FL/100SX (ST multi-mode 850nm)	300m
AT-MC116XL	10/100TX to 10FL/100SX (SC multi-mode 850nm)	300m

Common features of the MC100 series

- Half and full-duplex operation
- Transparent to IEEE 802.1Q packets
- Fits the AT-MCR12 rackmount chassis
- Auto-negotiation (AT-MC115XL and AT-MC116XL only)

LIFETIME WARRANTY Two years on PSU



MC10 Series

Ethernet Media Converters



AT-MC13	10T to 10FL (ST multi-mode)	2km
AT-MC14	10T to 10FL (SC multi-mode)	2km
AT-MC15	10T to BNC	185m

Common features of the MC10 series

- Half and full-duplex operation
- Transparent to IEEE 802.1Q packets
- Fits the AT-MCR12 rackmount chassis

LIFETIME WARRANTY Two years on PSU

MODEL	DIMENSIONS	WEIGHT
MC1000 series	10cm x 9.5cm x 2.5cm	.3kg
MC100 series	10cm x 9.5cm x 2.5cm	.3kg
MC10 series	10cm x 9.5cm x 2.5cm	.3kg



FS200 & FS230 Series

Fast Ethernet Speed/Media Converting Switches

AT-FS201	10/100TX to 100FX (ST multi-mode)	2km
AT-FS202	10/100TX to 100FX (SC multi-mode)	2km
AT-FS202SC/FS1	10/100TX to 100FX (SC single-mode)	15km
AT-FS202SC/FS2	10/100TX to 100FX (SC single-mode)	40km
AT-FS202SC/FS3	10/100TX to 100FX (SC single-mode)	75km
AT-FS202SC/FS4	10/100TX to 100FX (SC single-mode)	100km
AT-FS203	10/100TX to 10/100TX	
AT-FS232/FS1	10/100TX to 100FX (SC)	15km
AT-FS232/FS2	10/100TX to 100FX (SC)	40km
AT-FS232/FS3	10/100TX to 100FX (SC)	75km
AT-FS232/FS4	10/100TX to 100FX (SC)	100km
AT-FS237/FS1	10/100TX to 100FX (single-mode)	15km
AT-FS237/FS2	10/100TX to 100FX (single-mode)	40km
AT-FS237/FS3	10/100TX to 100FX (single-mode)	75km
AT-FS237/FS4	10/100TX to 100FX (single-mode)	100km
	1310 nm TX/RX	
AT-FS238/FS1	10/100TX to 100FX (single-mode)	15km
AT-FS238/FS2	10/100TX to 100FX (single-mode)	40km
AT-FS238/FS3	10/100TX to 100FX (single-mode)	75km
AT-FS238/FS4	10/100TX to 100FX (single-mode)	100km
	1310 nm TX	
	1550 nm RX	

Common features of the FS200 & FS230 series

- Convert speed as well as media type
- Compact physical size
- Auto MDI/MDI-X crossover (AT-FS201 and AT-FS202 only)
- Supports full and half-duplex operation
- 8,000 MAC address tables
- Store-and-Forward switching mode
- Transparent to IEEE 802.1Q packets
- Standalone or rackmountable
- Fits the AT-MCR12 rackmount chassis
- MissingLink and Smart MissingLink (AT-FS232 only)

LIFETIME WARRANTY Two years on PSU

FS210 Series

Wall-Mounted Fast Ethernet Speed/Media Converting Switches

AT-FS211	10/100TX to 100FX (ST multi-mode)	2km
AT-FS212	10/100TX to 100FX (SC multi-mode)	2km
AT-FS212/1	10/100TX to 100FX (SC single-mode)	15km
AT-FS212/2	10/100TX to 100FX (SC single-mode longhaul)	40km
AT-FS212/3	10/100TX to 100FX (SC single-mode longhaul)	70km
AT-FS212/4	10/100TX to 100FX (SC single-mode longhaul)	90km
AT-FS214	10/100TX to 100FX (MT-RJ multi-mode)	2km
AT-FS215	10/100TX to 100FX (VF-45 multi-mode)	2km
AT-FS216	10/100TX to 100FX (LC multi-mode)	2km

Common features of the FS210 series

- Convert speed as well as media type
- Compact physical size
- Auto MDI/MDI-X crossover
- Supports full and half-duplex operation
- 4,000 MAC address tables
- Transparent to IEEE 802.1Q packets
- Support for multi-mode and single-mode fibre

LIFETIME WARRANTY Two years on PSU



MODEL	DIMENSIONS	WEIGHT
FS200 series	10cm x 9.5cm x 2.5cm	.3kg
FS230 series	10.5cm x 9.5cm x 2.5cm	.3kg
FS210 series	9cm x 7cm x 2.2cm	.3kg

MCF100 Series

Multi-channel Fast Ethernet Media Converters



AT-MCF106/ST	100TX x 6 ports to 100FX x 6 ports (ST multi-mode)	2km
AT-MCF106/SC	100TX x 6 ports to 100FX x 6 ports (SC multi-mode)	2km
AT-MCF106/VF	100TX x 6 ports to 100FX x 6 ports (VF-45 multi-mode)	2km
AT-MCF106/SM	100TX x 6 ports to 100FX x 6 ports (SC single-mode)	15km
AT-MCF106/LH	100TX x 6 ports to 100FX x 6 ports (SC single-mode longhaul)	40km
AT-MCF112/ST	100TX x 12 ports to 100FX x 12 ports (ST multi-mode)	2km
AT-MCF112/SC	100TX x 12 ports to 100FX x 12 ports (SC multi-mode)	2km
AT-MCF112/VF	100TX x 12 ports to 100FX x 12 ports (VF-45 multi-mode)	2km
AT-MCF112/SM	100TX x 12 ports to 100FX x 12 ports (SC single-mode)	15km
AT-MCF112/LH	100TX x 12 ports to 100FX x 12 ports (SC single-mode longhaul)	40km

Common features of the MCF100 series

- Fibre test switch
- Plug & play installation
- MissingLink integrity monitoring
- Optional Telnet and SNMP management

TWO YEAR WARRANTY

MCF Series

Multi-channel Ethernet Media Converters



AT-MCF06/ST	10T x 6 ports to 10FL x 6 ports (ST multi-mode)	2km
AT-MCF06/SC	10T x 6 ports to 10FL x 6 ports (SC multi-mode)	2km
AT-MCF06/SM	10T x 6 ports to 10FL x 6 ports (ST single-mode)	15km
AT-MCF12/ST	10T x 12 ports to 10FL x 12 ports (ST multi-mode)	2km
AT-MCF12/SC	10T x 12 ports to 10FL x 12 ports (SC multi-mode)	2km
AT-MCF12/SM	10T x 12 ports to 10FL x 12 ports (ST single-mode)	15km

Common features of the MCF10 series

- Fibre test switch
- Plug & play installation
- MissingLink integrity monitoring
- Optional Telnet and SNMP management

TWO YEAR WARRANTY

Telnet and SNMP management module and redundant power module for the MCF100 & MCF10 series

AT-MCM02	RS232 x 1 port, 10T x 1 port
AT-PWR5	Redundant power supply option
AT-PWR7	-48VDC power supply option

MODEL	DIMENSIONS	WEIGHT
MCF100 series	44cm x 24cm x 4.4cm	3.5kg
MCF series	44cm x 24cm x 4.4cm	3.5kg

11

LAN Adapter Cards

Network Adapters

Allied Telesyn offers a complete range of Ethernet, Fast Ethernet and Gigabit Ethernet adapter cards to support the leading network technologies, architectures, and operating systems. As well as continuing to drive down the cost of desktop copper adapters, Allied Telesyn has firmly established itself as the market leader worldwide for Ethernet and Fast Ethernet fibre adapters.

1000Mbps

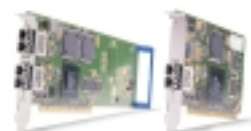
2900 Series Gigabit Ethernet PCI Adapters

AT-2971SX/SC 1000SX x 1 port (SC)
AT-2971T 1000T x 1 port (RJ45)

Common features of the 2970 series

- Traffic and troubleshooting LEDs
- Support for all popular operating systems
- 32/64-bit bus
- 33/66MHz operation
- Fully 802.3z compliant
- PXE 2.0 support

LIFETIME WARRANTY



AT-2930SX V2 1000SX x 1 port (SC)
AT-2930TV2 1000T x 1 port (RJ45)

Common features of the 2930 series

- PXE support
- VLAN support
- Advanced diagnostics
- Advanced installation utility
- PCI 2.2 compatible
- Traffic and troubleshooting LEDs
- Support for all popular operating systems
- 32/64-bit bus
- 33/66MHz operation
- Fully 802.3z compliant
- 10/100/1000T auto-negotiation (AT-2930T only)

LIFETIME WARRANTY



AT-2915T 1000T x 1 port (RJ45)

Features

- Advanced diagnostics
- Advanced installation utility
- PCI 2.2 compatible
- Traffic and troubleshooting LEDs
- Support for all popular operating systems
- 32-bit bus only
- 33/66MHz operation
- Fully 802.3z compliant
- 10/100/1000T auto-negotiation

LIFETIME WARRANTY



MODEL	DIMENSIONS	WEIGHT
AT-2971SX/SC	19cm x 13cm	.32kg
AT-2971T	19cm x 13cm	.32kg
2930 V2 series	17cm x 9.5cm	.27kg
AT-2915T	14cm x 6.3cm	.2kg

AT-2800TX

Fast Ethernet CardBus PCI Adapter

AT-2800TX 10/100TX

Features

- Traffic and troubleshooting LEDs
- Support for all popular operating systems

LIFETIME WARRANTY



AT-2701FX & AT-2701FTX models
available in
NEW LOW PROFILE design

2700 Series

Fast Ethernet PCI Adapters

AT-2701FX/SC	100FX (SC)
AT-2701FX/MT	100FX (MT-RJ)
AT-2701FX/ST	100FX (ST)
AT-2701FX/VF	100FX (VF-45)
AT-2701FTX/ST	100FX (ST) & 10/100TX
AT-2701FTX/SC	100FX (SC) & 10/100TX
AT-2701FTX/MT	100FX (MT-RJ) & 10/100TX
AT-2701TX	10/100TX
AT-2746FX/ST	10FL (ST) & 100FX
AT-2746FX/SC	10FL (SC) & 100FX

Common features of the 2700 series

- PXE support
- VLAN support
- Advanced diagnostics
- Advanced installation utility
- PCI 2.2 compatible
- PXE remote booting available
- Traffic and troubleshooting LEDs
- Support for all popular operating systems
- Fault tolerant driver support
- ACPI/Wake On LAN (WOL) support
- Copper and fibre ports for flexibility (AT-2700FTX models only)

LIFETIME WARRANTY

AT-2501TX & AT-2451FTX

Fast Ethernet PCI Adapters

AT-2501TX 10/100TX

Features

- Advanced diagnostics
- Advanced installation utility
- PCI 2.2 compatible
- PXE remote booting available
- Traffic and troubleshooting LEDs
- Support for all popular operating systems
- ACPI/Wake On LAN (WOL) support

LIFETIME WARRANTY



AT-2501TX model available in
NEW LOW PROFILE design

AT-2451FTX/ST 10FL (ST) & 10/100TX
AT-2451FTX/SC 10FL (SC) & 10/100TX

Features

- Advanced diagnostics
- Advanced installation utility
- PCI 2.2 compatible
- PXE remote booting available
- Traffic and troubleshooting LEDs
- Support for all popular operating systems
- Fault tolerant driver support
- ACPI/Wake On LAN (WOL) support
- Copper and fibre ports for flexibility

LIFETIME WARRANTY



AT-2451FTX model available in
NEW LOW PROFILE design

AT-2400BT

Ethernet PCI Adapter

AT-2400BT 10T (BNC)

Features

- Advanced installation utility
- Traffic and troubleshooting LEDs
- Support for all popular operating systems

LIFETIME WARRANTY



Accessories for the AT-2501TX

AT-BP2501 PXE remote booting ROM for AT-2501TX.

MODEL	DIMENSIONS	WEIGHT
2700 series	15cm x 11cm	.12kg
AT-2800TX	8.5cm x 5.5cm	.18kg
AT-2450FTX	15cm x 11cm	.12kg
AT-2501TX	13cm x 12cm	.18kg
AT-2400BT	13cm x 12cm	.18kg

12

Service & Support Programs



Net.Cover® Support Numbers

Telephone support is available Monday through Friday between 0900 and 1730 local time (excluding national holidays).

Austria, Belgium, France, Germany, Ireland, Italy, Luxembourg, The Netherlands, Norway, Sweden, Switzerland, United Kingdom

Freephone: 00 800 287 877 678 or +31 20 711 4333

Support E-mail Address: europe_support@alliedtelesyn.com

Bosnia & Herzegovina, Bulgaria, Serbia & Montenegro, Macedonia

Support Telephone number: +381-11-3235-639

Support Fax Number: +381-11-3235-992

Support E-mail Address: Yug.Servis@alliedtelesyn.com

All other countries not listed should refer their technical support requests to:

Support Telephone number: 31 20 711 4333

Support E-mail Address: europe_support@alliedtelesyn.com

Croatia

Support Telephone number: +385 1 382 1341

Support Fax Number: +385 1 382 1340

Support E-mail Address: ATHelpdesk_Croatia@alliedtelesyn.com

Czech Republic

Support Telephone number: +420 296 538 888

Support Fax Number: +420 296 538 889

Support E-mail Address: Czech_support@alliedtelesyn.com

Finland

Freephone: 990 800 287 877 67 or +31 20 711 4333

Support E-mail Address: europe_support@alliedtelesyn.com

Hungary

Support Telephone number: +36 1 382 6385

Support Fax number: +36 1 382 6398

Support E-mail Address: Hungary_Helpdesk@alliedtelesyn.com

Poland

Support Telephone number: +48 22 535 9670

Support Fax number: +48 22 535 9671

Support E-mail Address: Polska_pomoc@alliedtelesyn.com

Russia & former Soviet Union Countries

Support Telephone number: +7-095-935 8585

Support Fax number: +7-095-935 8586

Support E-mail Address: support_CIS@alliedtelesyn.ru

Spain

Freephone: 00 800 287 877 67 or +31 20 711 4333

Support E-mail Address: europe_support@alliedtelesyn.com

Ukraine

Support Telephone number: +7-095-935 8585

Support Fax number: +7-095-935 8586

Support E-mail Address: Ukraine_support@alliedtelesyn.ru

Net.Cover®

Service & Support Programs

At Allied Telesyn, we realise that many customers want to take additional precautions to safeguard the integrity of networked data, ensure network uptime and maximise end-user productivity. That's why we've introduced Net.Cover®. This flexible set of service and support programs can be tailored to meet the needs of a wide range of customers: Internet service providers, Web content providers, multi-tenant building service providers, e-businesses, metropolitan area networks, hosting, co-location centres and enterprise businesses. Net.Cover® programs can be purchased over a one or three year term and are renewed thereafter on an annual basis.

PLEASE REFER TO WWW.ALLIEDTELESYN.COM FOR SERVICE AVAILABILITY IN YOUR COUNTRY

	On-line services	Next Business Day e-mail response	Emergency telephone support, 24x7x365	Software updates and patches	Telephone support local business hours in your timezone	Advance replacement of defective hardware	Despatch Field Engineer	Assigned Software Engineer
Net.Cover® BASIC The Net.Cover® Basic support plan is designed for customers who are interested in keeping service and support costs to a minimum but want access to basic support services. Basic service includes access to Allied Telesyn's web-accessible knowledge database, software updates and bug fixes and advance replacement of failed hardware.	●	●		●	●	Shipped within 5 Business Days *		
Net.Cover® BASIC PLUS The Net.Cover® Basic Plus support plan gives you access to more services than Net.Cover® Basic. Ideal for environments requiring a high degree of network availability, data integrity and end-user productivity, the Net.Cover® Basic Plus plan includes faster replacement of hardware.	●	●	●	●	●	Next Business Day *		
Net.Cover® SILVER Net.Cover® Silver is designed to meet and exceed all the essential requirements of supporting and maintaining enterprise LANs. Ideal for mission-critical network environments that require a high degree of network availability, data integrity and end-user productivity. The Net.Cover® Silver plan includes faster on-site service and spares.	●	●	●	●	●	Next Business Day *	●	
Net.Cover® GOLD Net.Cover® Gold is also designed to address all the essential requirements of enterprise LANs, but with even faster response times for service and spare parts in case of emergency - within four hours, Monday-Friday, normal business hours. Ideal for mission-critical environments that require the highest degree of network availability.	●	●	●	●	●	Within 4 Hours (8x5)	●	
Net.Cover® PLATINUM Net.Cover® Platinum is Allied Telesyn's most comprehensive support plan for mission-critical switched broadband networks. This plan ensures a very individualised, flexible and focused approach. Net.Cover® Platinum also adds dedicated level Escalation support engineers and our fastest on-site service and spares response time.	●	●	●	●	(24x7)	Within 4 Hours (24x7)	●	
SILVER SOFTWARE SUPPORT PROGRAM (SSSP) The Net.Cover® Silver Software support program offers high priority support in the event of a software failure. Ideal for network environments that require high availability, security and integrity. A software engineer will be assigned within 24 hours upon receipt of an inquiry.	●	●	●	●	●			Within 24 Hours
GOLD SOFTWARE SUPPORT PROGRAM (GSSP) The Net.Cover® Gold Software support program offers high priority support in the event of a software failure. Ideal for network environments that require high availability, security and integrity. This extended support offers an assigned software engineer within 4 hours upon receipt of an inquiry.	●	●	●	●	●			Within 4 hours

* Business day is defined as Monday to Friday excluding statutory national holidays

All Allied Telesyn products carry at least a two year warranty coverage. During the first year the customer can take advantage of the enhanced warranty benefits whilst during the second year the product is covered by a standard warranty program.

If the product continues with a bundled Net.Cover® contract, the warranty conditions will be replaced for the duration of the contract.

After the Net.Cover® contract coverage has expired, the product will return to the standard warranty conditions.

Net.Cover® REGISTRATION

All Allied Telesyn Layer 2 switches & Layer 3 switches and routers include a Net.Cover® Basic Plus Service Contract. To take advantage of this service and support coverage, you must register to activate your services:

- On-line at www.alliedtelesyn.com/netcover
- Or by completing the registration form on the CD-ROM included with your Allied Telesyn product and fax to Europe +44 1793 501413

ADDITIONAL SERVICE OPTIONS

Hardware Installation Service

An Allied Telesyn Network Specialist will go on-site to install and perform functional tests on individual Allied Telesyn products to ensure the new unit is operating properly.

Configuration Services

Allied Telesyn provides configuration consulting to customers requiring technical assistance in developing and implementing complex hardware configurations. This service will be carried out at our premises by an Allied Telesyn engineer and the result of the configuration be forwarded to the customer.

Total Implementation Service

Combines both Hardware Installation and Configuration at a reduced cost to offer a total solution to customers.

PROFESSIONAL SERVICES PROGRAMS

- Network Consultancy
- Network Deployment
- Remote Network Monitoring
- On-site Configuration and Installation
- Total Network Implementation

For more info Europe and U.S. :

<http://www.alliedtelesyn.com/netcover>

TRAINING PROGRAMS

- Product training
- Certification training
- Technology training
- Train-the-Trainer

For more info Europe and U.S. :

<http://www.alliedtelesyn.com/training>

ATI On-line Solutions (AOS) (Basic, Basic Plus, Silver, Gold, Platinum, SSSP, GSSP)

Allied Telesyn offers a Web-based, on-line support and information service that is available 24 hours a day, 7 days a week. Services include access to Allied Telesyn's extensive Knowledge Base with solutions to common questions and problems, and quick access to drivers, bug fixes, and software updates at the customer's fingertips.

Software Subscription Service (SSS) (Basic, Basic Plus, Silver, Gold, Platinum, SSSP, GSSP)

Allied Telesyn's annual Software Subscription Service offers Net.Cover® customers notification and access of software patches, bug fixes and updates applying to Allied Telesyn hardware product's OS software.

Technical Assistance Center (TAC) (Basic, Basic Plus, Silver, Gold, SSSP, GSSP)

Customers receive toll-free phone or e-mail access to Allied Telesyn's TAC team. An Allied Telesyn network support engineer troubleshoots the problem within your specified network environment and validates or identifies and isolates the failure. Customers can access TAC via phone, Europe 00800-28-7877678 or +31-20-711-4333.

Rapid Response Support (RRS) (Basic Plus, Silver, Gold, Platinum, SSSP, GSSP)

In the event of a network down condition occurring, Allied Telesyn provides Rapid Response emergency/network-down telephone support 24 hours a day, 7 days a week, 365 days a year.

Advance Replacement Services (ARI) (Basic)

In the unlikely event of a hardware failure, ARI provides a hardware replacement that will ship within 5 business days from the issuing of an RMA number. ARI is accessible through the TAC.

Advance Replacement Services (AR2) (Basic Plus)

In the unlikely event of a hardware failure, Net.Cover® AR2 guarantees the same *business day shipment of a replacement unit, or next *business day shipment if the request is received after 2:00pm PST (US) or GMT (Europe). AR2 is accessible through the TAC.

On-site Replacement and Hardware Maintenance Services On-Site 8x5xNBD (Silver)

The On-site Replacement service program provides a skilled network engineer to arrive on-site next business day to perform the installation and configuration of replacement devices during local business hours, Monday-Friday (except local holidays).

On-site Replacement and Hardware Maintenance Services On-Site 8x5x4 (Gold)

Same service as Silver, but network engineer will arrive on-site within 4 hours.

On-site Replacement and Hardware Maintenance Services On-Site 24x7x4 (Platinum)

Same service as Gold, but coverage is ensured 24 hours a day, 7 days a week, 365 days a year. Customers can also get access to technical support through the TAC, 24 hours a day, 7 days a week, 365 days a year.

Net.Cover®

Benefits

Available Services	ATI Standard		Basic	Basic Plus†	Silver	Gold	Platinum	SSSP ①	GSSP ②
	Standard warranty	Enhanced warranty ◇							
Warranty Duration return to factory and repair	●	●	●	●	●	●	●		
30 days DOA - new product replacement		●	●	●	●	●	●		
1 year advanced replacement shipped within 10 business days		●							
1 year advanced replacement shipped within 5 business days			●						
1-3 year(s) advanced replacement Next Business Day (1)				●	●	●	●		
On-site engineer for part replacement Next Business Day*					●	●			
On-site engineer for part replacement Within 4 hours*						●	●		
On-site engineer for part replacement 24 x 7 x 4h							●		
1 year limited Tech Support access*		●							
1-3 years(s) priority Tech Support access*			●	●	●	●	●		
Emergency/Network down Telephone support 24 hours, 7 days a week				●	●	●	●	●	●
24 hours, 7 days a week, 365 days a year Access to Technical Support							●		
1 year OS software updates (on request when applicable)		●							
1-3 year(s) Software Updates Notification and Access			●	●	●	●	●		
1 year Software Upgrades Notification and Access								●	●
On-line services public access	●	●	●	●	●	●	●	●	●
1-3 year(s) on-line services private access (password)			●	●	●	●	●	●	●
Assigned Software Engineer Within 24 Hours								●	
Assigned Software Engineer Within 4 Hours									●

(1) Next Business Day * Business hours ◇ First year only
 † As standard on Managed Switches & Routers
 ① SSSP (Silver Software Support Program)
 ② GSSP (Gold Software Support Program)

For more information on Allied Telesyn
 Net.Cover® Services, visit our website at
www.alliedtelesyn.com/netcover

Training and Certification

The Allied Telesyn training program is designed for you and your job. Technicians, engineers, resellers or network administrators, regardless of the position, Allied Telesyn have a program suited just for your needs. Anyone who must deal with the responsibilities of installing, troubleshooting, post sales support or maintaining the hardware within your network will find these certifications valuable.

The goals are to teach you about Allied Telesyn's products and the technologies that manage them. These courses incorporate hands-on on lab practice with instructor led training in an environment that simulates a real network.

Allied Telesyn offers non-certification classes on basic technologies, and certification classes in Certified Installer, Certified System Engineer and Certified Instructor.

Why Become Certified on Allied Telesyn Products?

The networking industry is constantly seeking qualified Internet experts and professionals. Enhance your opportunities for advancement in this arena by achieving certification on Allied Telesyn products. Certification is a testament to your dedication and knowledge, and will advance your company into a higher echelon of excellence.

Becoming Allied Telesyn certified is not simple, it requires hands-on experience with the products in addition to training. There is an enormous learning advantage in the experience of solving real-world network problems that books and software simulations simply cannot provide.

Allied Telesyn offers certifications for our Switch and Router products ranging from Installer level to System Engineer. We also have certified trainer courses designed for those interested in becoming a Training Partner.

Certifications Offered

Each class covers product features, benefits, applications, installation, troubleshooting, and competitive positioning. A Certification Test is administered at the end of each class. A comprehensive Applications & Solutions Test covering the integration of all products is required for Allied Telesyn certified resellers.

Allied Telesyn offers three types of certification:

1. Certified Allied Telesyn Installer (CAI)
2. Certified Allied Telesyn System Engineer (CASE)
3. Certified Allied Telesyn Instructor (IBT and IAT)

These different types of certification have been designed so that you can choose the program that best fits your needs or the needs of your organisation. CAI and CASE certification provide basic or advanced knowledge of installation and configuration of Allied Telesyn products. These courses are available to any technical staff from resellers or end-users complying with the related prerequisites and can be delivered by an Allied Telesyn subsidiary or at an Allied Telesyn Net.Cover® Training Partner Centre.

IBT and IAT certification emphasizes on how to pass CAI and CASE skills on to your own staff and customers. These courses are reserved for authorised Net.Cover® Training Partners only, and will only be offered at Allied Telesyn Training Centres.

For more information concerning courses specifications, agendas and certified Training Partners, visit www.alliedtelesyn.com/training or call your local Allied Telesyn office today

e-learning Wireless

The Wireless e-learning training is composed of a series of information modules followed by a final examination. The course is specially designed for e-learning, featuring audio, animations, additional documents and links to useful web sites.

For more information, please visit www.alliedtelesyn.com/elearning

INTERNATIONAL TRAINING CENTRE

Allied Telesis International Services S.r.l.

Regione Torre Pernice, 2

17031 Albenga (SV), Italy

Tel: (+39) 01 82586183 • Fax: (+39) 01 82586189

Corega is a wholly owned Allied Telesyn company focused on providing cost-effective product solutions for consumers in the SOHO market. Corega have an award winning range of Ethernet and WiFi Wireless Networking, USB Connectivity, Flash Memory and Peripheral Sharing Devices.





Layer 2 Unmanaged Gigabit Ethernet Switches



COR-GSW-4P
COR-GSW-8

10/100/1000T x 4 ports, External PSU
10/100/1000T x 8 ports, Internal PSU

Features

- Non-blocking
- Wirespeed forwarding
- Metal chassis

TWO YEAR WARRANTY

Layer 2 Unmanaged Fast Ethernet Switches

	PORTS	PSU	CHASSIS	UPLINK	ALL PORTS	MOUNTING
COR-FSW-5PM	10/100TX x 5 ports	External PSU	Plastic	Uplink port	Auto MDI/MDI-X	
COR-FSW-5PA	10/100TX x 5 ports	External PSU	Plastic			
COR-FSW-8PM	10/100TX x 8 ports	External PSU	Plastic	Uplink port	Auto MDI/MDI-X	
COR-FSW-8PA	10/100TX x 8 ports	External PSU	Plastic			
COR-FSW-8MA	10/100TX x 8 ports	Internal PSU	Metal		Auto MDI/MDI-X	Rackmountable
COR-FSW-16PM	10/100TX x 16 ports	External PSU	Plastic	Uplink port	Auto MDI/MDI-X	Rackmountable
COR-FSW-16A	10/100TX x 16 ports	Internal PSU	Metal			
COR-FSW-24	10/100TX x 24 ports	Internal PSU	Metal			Rackmountable



Layer 2 Managed Fast Ethernet Switches

COR-MSW-24 10/100TX x 24 ports
COR-MSW-2402T 10/100TX x 24 ports
10/100/1000T x 8 ports

Features

- 9.6Gbps switch fabric
- 32 VLAN support
- Non-blocking
- Wirespeed forwarding
- Web based management and SNMP
- IEEE 802.1Q VLAN tagging
- IEEE 802.1p Class of Service
- Pre-programmed IP address for easy setup

TWO YEAR WARRANTY

For more details on Corega, and the Corega product set — including a range of Ethernet Hubs, Switches and Adapters, visit the Corega Website at

WWW.COREGA-INTERNATIONAL.COM

Layer 1 Media Converters

COR-MC10-ST 10T to 10FL (ST)
COR-MC100-ST 10T to 100FT (ST)
COR-MC100-SC 10T to 100FT (SC)

Features

- Connect networks up to 2km apart

TWO YEAR WARRANTY



Layer 1 Unmanaged Ethernet Hubs

COR-HUB-5 10T x 5 ports
COR-HUB-8 10T x 8 ports

Features

- Cascade/uplink port
- External Power Adapter
- Plastic Chassis

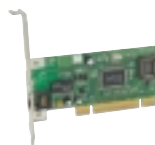
TWO YEAR WARRANTY

PCI Adapter Cards

COR-PCI-TX	10/100TX
COR-PCI-T32	10/100/1000T
COR-WLPCIB-II	IEEE 802.11b Adapter

Features

- Wake On LAN support



PCMCIA Adapter Cards

COR-PCC-TXD	10/100TX, PCMCIA type I
COR-PCCL-II	Wireless IEEE 802.11b, PCMCIA type II
COR-WLCB-54GT	Wireless IEEE 802.11g PCMCIA type II (CardBus)

Features

- Support for WinXP, 2000, ME, 98
- Integral RJ45 on COR-PCC-TXD
- Integral Antennas on Wireless adapters



USB Adapters

COR-USB-TXS	10/100TX USB1.1 Adapter
COR-USB2-TX	10/100TX USB2.0 Adapter
COR-USB-Stick-II	IEEE 802.11b USB1.1 'Pen-style' Adapter
COR-USB-II-Mini	IEEE 802.11b USB1.1 'Desktop' Adapter



USB Pocket Flash Drives

COR-UPFD-32	32MB
COR-UPFD-64	62MB
COR-UPFD-128	128MB

Features

- USB1.1 Compliant Memory device
- High-speed data read and write
- Write protect switch
- No drivers needed for most operating systems



IEEE 802.11g & IEEE802.11b 11Mbps Wireless

WLAR-54GT	802.11g Access Point
COR-APL-II	Access Point
COR-BAR-WL	Broadband Access Router



Keyboard, Video, Mouse (KVM) Switches

COR-KVM-Mini-I8	Switch x 2 ports, with integral cables
COR-KVM-2	Switch x 2 ports, ships with 2 cables
COR-KVM-4	Switch x 4 ports, ships with 4 cables
COR-KVM-8pro	Switch x 8 ports

Features

- Supports video resolutions up to 1920 x 1440 dots
- Supports PS/2 style mouse connections
- Supports PS/2 style keyboard connections
- Soft key (keyboard command) switching support



AlliedWare	42	AT-AR023	11/28/29/33	AT-GS924	18	AT-NM1238/39	23	AT-SB4215	4/5
AT-2400BT	55	AT-AR024	11/28/29/33	AT-INT063245	46	AT-NM1290	23	AT-SB4261	4/5
AT-2451FTX/SC	55	AT-AR026	28	AT-INT063246	46	AT-NM1291	23	AT-SB4262	4/5
AT-2451FTX/ST	55	AT-AR027	28/29/33	AT-INT063365	46	AT-NM1292	23	AT-SB4311	4
AT-2501TX	65	AT-AR040	11/28	AT-INT064616	46	AT-NM1311	23	AT-SB4352	5
AT-2701FTX/MT	55	AT-AR041	28	AT-INT065349	46	AT-NM1911	23	AT-SB4411A	4/5
AT-2701FTX/SC	55	AT-AR042	28	AT-INT069887	46	AT-NM1912	23	AT-SB4412A	4/5
AT-2701FTX/ST	55	AT-AR061	11/41	AT-INT069888	46	AT-NM1622	23	AT-SB4441A	4/5
AT-2701FX/MT	55	AT-AR210	30	AT-INT071578	46	AT-NM6221	23	AT-SB4451A	4/5
AT-2701FX/SC	55	AT-AR215	30	AT-INT071579	46	AT-NMSFP/SX-00	23	AT-SB4452A	4/5
AT-2701FX/ST	55	AT-AR220E	30	AT-INT071581	46	AT-PB1001/1	50	AT-SB4461A	4/5
AT-2701FX/VF	55	AT-AR240E	30	AT-INT071620	46	AT-PB1001/2	50	AT-SB4462A	4/5
AT-2746FX/ST	55	AT-AR250E	30	AT-INT586610	46	AT-PB1001/3	50	AT-SD256A	28
AT-2746FX/SC	55	AT-AR255E	30	AT-INT61868	46	AT-PB1001/4	50	AT-TN100-A	25
AT-2800TX	55	AT-AR267	30	AT-INT63198	46	AT-PB1005G	50	AT-TN101-A	25
AT-2915T	54	AT-AR320	33	AT-INT63363	46	AT-PB101	50	AT-TN102-A	24
AT-2930SX	54	AT-AR320S	33	AT-INT63366	46	AT-PB102	50	AT-TN107-A	24
AT-2930T	54	AT-AR410	28	AT-INT67262	46	AT-PB103/1	50	AT-TN108-A	25
AT-2971SX/SC	54	AT-AR410S	33	AT-INT67263	46	AT-PB103/2	50	AT-TN109-A	24
AT-2971T	54	AT-AR450S	32	AT-INT69893	46	AT-PB103/3	50	AT-TN250G	25
AT-3DES	11/29	AT-AR725	28	AT-INT70141	46	AT-PB103/4	50	AT-TN251G	25
AT-8012M	16	AT-AR740RPS	28	AT-INT70403	46	AT-PB13	50	AT-TN253G	24
AT-8016F/SC	16	AT-AR745	28	AT-INT71121	46	AT-PB14	50	AT-TN253GF	24
AT-8016F/MT	16	AT-BP2501	55	AT-INT71122	46	AT-PB15	50	AT-TN300-A	25
AT-8024	16	AT-CF128A	28	AT-INT71179	46	AT-PB201	50	AT-TN301-A	24
AT-8024GB	16	AT-EX1002SC/GM1	50	AT-INT71489	46	AT-PB202	50	AT-TN400-A	25
AT-8024M	16	AT-FS201	52	AT-MC1001	51	AT-PB202/1	50	AT-TN7101	25
AT-8026FC	16	AT-FS202	52	AT-MC1001SC/GS2	51	AT-PB202/2	50	AT-TN7102	25
AT-8026T	16	AT-FS202SC/FS1	52	AT-MC1001SC/GS3	51	AT-PB202/3	50	AT-TN7103	25
AT-8088/SC	16	AT-FS202SC/FS2	52	AT-MC1001SC/GS4	51	AT-PB202/4	50	AT-TN7104	25
AT-8088/MT	16	AT-FS202SC/FS3	52	AT-MC1004	51	AT-PB204	50	AT-V.35-DCE	28/29
AT-8216FXL/MT	18	AT-FS202SC/FS4	52	AT-MC1005/1	51	AT-PB205	50	AT-V.35-DTE	28/29
AT-8216FXL/SC	18	AT-FS203	52	AT-MC1005/2	51	AT-PB301	50	AT-VIEW PLUS 2.0	39
AT-8224XL	18	AT-FS211	52	AT-MC1005/3	51	AT-PB302	50	AT-VP500 SIP SERVER	36
AT-8324	17	AT-FS212	52	AT-MC1005/4	51	AT-PBC18	50	AT-VP500	
AT-8326GB	17	AT-FS212/1	52	AT-MC101XL	51	AT-PBM02	50	UNIT NETWORK MANAGER	36
AT-8350GB	17	AT-FS212/2	52	AT-MC102XL	51	AT-PBPWRAC	50	AT-VP604E FXO	37
AT-8400	15	AT-FS212/3	52	AT-MC103LH	51	AT-PBPWRDC	50	AT-VP604E FXS	37
AT-8411	15	AT-FS212/4	52	AT-MC103SC/FS3	51	AT-PWR4	50	AT-VP624E FXS	37
AT-8412/SC	15	AT-FS214	52	AT-MC103SC/FS4	51	AT-PWR5	53	AT-WA3404	45
AT-8412/MT	15	AT-FS215	52	AT-MC103XL	51	AT-PWR7	53	AT-WA7500	45
AT-8413	15	AT-FS216	52	AT-MC104LH	51	AT-PWR9	50	AT-WA7501	45
AT-8414	15	AT-FS237/FS1	52	AT-MC104SC/FS3	51	AT-PWR3001	17	AT-WCL007	45
AT-8724XL	14	AT-FS237/FS2	52	AT-MC104SC/FS4	51	AT-PWR8000	10/13/14/18	AT-WCL452	45
AT-8748XL	14	AT-FS237/FS3	52	AT-MC104XL	51	AT-PWR9000	8	AT-WCL460	45
AT-8824	13	AT-FS237/FS4	52	AT-MC115XL	51	AT-RG001	34	AT-WD1008	21
AT-8848	13	AT-FS238/FS1	52	AT-MC116XL	51	AT-RG005	34	AT-WDFAN01	21
AT-9410GB	18	AT-FS238/FS2	52	AT-MC13	51	AT-RG006	34	AT-WDM02	21
AT-9812T	8	AT-FS238/FS3	52	AT-MC14	51	AT-RG010	34	AT-WDRPS	21
AT-9816GB	8	AT-FS238/FS4	52	AT-MC15	51	AT-RG011	34	AT-WL2411	46
AT-A14	18	AT-FS705EFC	19	AT-MCF06/SC	53	AT-RG020	34	AT-WM3400	46
AT-A15/LX	18	AT-FS705L	19	AT-MCF06/SM	53	AT-RG021	34	AT-X.21-DCE	28/29
AT-A15/SX	18	AT-FS705LE	19	AT-MCF06/ST	53	AT-RG213	35	AT-X.21-DTE	28/29
AT-A16	18	AT-FS708	19	AT-MCF106/LH	53	AT-RG613	35	AT-ZTC500	35
AT-A17	18	AT-FS708LE	19	AT-MCF106/SC	53	AT-RG623	35	AT-ZTCUPGRADE	35
AT-A17LX	18	AT-FS709EFC	19	AT-MCF106/SM	53	AT-RGCONSOLECABLE	34	AT-ZTCUNLIMITED	35
AT-A18	18	AT-FS709FC	19	AT-MCF106/ST	53	AT-RP16fi	11	Castle Rock SNMPc 6.0	40
AT-A19	18	AT-FS713FC	19	AT-MCF106/VF	53	AT-RP24i	11	NMS Telesyn 3.0	38
AT-A35LX	10/14	AT-FS716	19	AT-MCF112/LH	53	AT-RP48i	11	Rapier 16fi	11
AT-A35SX	10/14	AT-FS716E	19	AT-MCF112/SC	53	AT-RPG6	10	Rapier 24i	11
AT-A39T	10/14	AT-FS717FC	19	AT-MCF112/SM	53	AT-RPG6f	10	Rapier 48i	11
AT-A40	10/14	AT-FS724i	19	AT-MCF112/ST	53	AT-RPS2001	17	Rapier G6	10
AT-A41	10/14	AT-FS232/FS1	52	AT-MCF112/VF	53	AT-RPS2004	17	Rapier G6f	10
AT-A42	10/14	AT-FS232/FS2	52	AT-MCF12/SC	53	AT-RPS3004	17	Net.Cover	56
AT-A45/MT	16	AT-FS232/FS3	52	AT-MCF12/SM	53	AT-RPS8000	10/13/14/18	Telesyn 7100	25
AT-A45/SC	16	AT-FS232/FS4	52	AT-MCF12/ST	53	AT-RPS9000	8	Telesyn 7400	25
AT-A46	16	AT-G8LX10	8/10/13/14/17/21/50	AT-MCM02	53	AT-RS232-DCE	28/29	Telesyn 7700	25
AT-A47	16	AT-G8LX25	8/10/13/14/17/21/50	AT-MCR12	50	AT-RS232-DTE	28/29	Telesyn 9400	24
AT-A48/MT	17	AT-G8LX40	8/10/13/14/17/21/50	AT-NM1011/12	23	AT-SB4104	3	Telesyn 9700	24
AT-A48/SC	17	AT-G8LX70	8/10/13/14/17/21/50	AT-NM1015/16	23	AT-SB4108	3		
AT-A49	17	AT-G8SX	8/10/13/14/17/21/50	AT-NM1021	23	AT-SB4161-30	4/5		
AT-AR011i	41	AT-G8TP	8/10/13/14/17/21/50	AT-NM1133/34	23	AT-SB4161-50	4/5		
AT-AR020	11/28/29/33	AT-GS908	18	AT-NM1135/36	23	AT-SB4161-80	4/5		
AT-AR021	11/28/29/33	AT-GS908GB	18	AT-NM1223	23	AT-SB4211	4/5		

EUROPEAN & LATIN AMERICA HEADQUARTERS

European & Latin America Headquarters

Allied Telesyn International SA
Via Motta 24
6830 Chiasso
Switzerland
Tel: +41 91 69769.00
Fax: +41 91 69769.11

Allied Telesyn International Services
Piazza Tirana n. 24/4 B
20147 Milano
Italy
Tel: +39 02 414112.1
Fax: +39 02 414112.61

REGIONAL LOCATIONS

Austria & Eastern Europe

Austria & Eastern Europe
Allied Telesyn Vertriebsgesellschaft m.b.H.
Lainzer Strasse 16/5-6
1130, Vienna
Tel: +43-1-876 24 41
Fax: +43-1-876 25 72

Poland
Allied Telesyn Vertriebsgesellschaft m.b.H.
Sp. z o.o. Oddział w Polsce
ul. Elektoralna 13
00-137 Warszawa
Tel: +48 22 620 82 96
Fax: +48 22 654 48 56

Romania
Allied Telesyn Vertriebsgesellschaft m.b.H.
str. Thomas Masaryk 23
Sector 2, Bucharest 0209
Tel: +40-21-211-1817/8245
Fax: +40-21-210-5610

Russia
Allied Telesyn International
Ul. Korovij Vall
Dom 7 Str. I Office 190
119049 Moscow
Tel: +7095 9358585
Fax: +7095 9358586

Serbia & Montenegro
Allied Telesyn Vertriebsgesellschaft m.b.H.
Krunska 6
11000 Belgrade
Tel & Fax: +381 11 3033 208
+381 11 3033 209
+381 11 3235 639

France & Italy

France
Allied Telesyn International SAS
12, avenue de Scandinavie
Parc Victoria, Immeuble "Le Toronto"
91953 Courtaboeuf Cédex - Les Ulis
Tel: +33 1 60 92 15 25
Fax: +33 1 69 28 37 49

Greece
Allied Telesyn International S.r.l.
Kiriazzi 14-16
145 62 Kifisia
Tel: +30 210 6234 200
Fax: +30 210 6234 209

Italy – North
Allied Telesyn International S.r.l.
Via Anna Kuliscioff, 37
20152 Milano
Tel: +39 02 41304.1
Fax: +39 02 41304.200

Italy – East
Tel: +39 348 1522583
Tel & Fax: +39 049 8868175

Italy – South
Allied Telesyn International S.r.l.
Via Troilo il Grande 3
00131 Roma
Tel: +39 06 41294507
Fax: +39 06 41404801

Turkey
Allied Telesyn International
6. Cadde 61/2 Öveçler
06460 Ankara
Tel: +90 312 472 1054/55
Fax: +90 312 472 1056

Germany & Switzerland

Germany – North
Allied Telesyn International GmbH
Kapweg 4
13405 Berlin
Tel: +49-30-435 900-0
Fax: +49-30-435 900-300
Toll Free (Sales): 00 800 255 43310
Toll Free (Technical Support): 00 800 287 877678

Germany – South
Allied Telesyn International GmbH
Zeppelinstr. 1
85399 Hallbergmoos
Tel: +49-811-999 37-0
Fax: +49-811-999 37-22

North West Europe (NWE)

Belgium & Luxembourg
Allied Telesyn International
Research Park
Kranenberg 6, 1731 Zellik, Belgium
Tel: +32 2 481 60 68
Fax: +32 2 481 60 75

Denmark
Allied Telesyn International
Jyllinge ErhvervsCenter
Møllehaven 8
DK-4040 Jyllinge
Tel: +45 46734835
Fax: +45 46734837

Finland
Allied Telesyn International Ltd.
Metsäneidonkuja 10
02130 ESPOO
Tel: +358 9 7255 5290
Fax: +358 9 7255 5299

Iceland +47 22 70 04 70

Ireland (Freephone) 1 800 409 127

The Netherlands
Allied Telesyn International BV
Hoeksteen 26
2132 MS Hoofddorp
Tel: +31 20 6540 246
Fax: +31 20 6540 249

Norway
Allied Telesyn International
Ole Deviksvei 4
0666 Oslo
Tel: +47 22 70 04 70
Fax: +47 22 70 04 01

Sweden
Allied Telesyn International
Byängsgränd 14
120 40 Årsta
Tel: +46 8 13 14 14
Fax: +46 8 681 04 45

United Kingdom
Allied Telesyn International Ltd.
100 Longwater Avenue
GreenPark
Reading, RG2 6GP
Tel: +44 118 920 9800
Fax: +44 118 975 2456

Iberia & Latin America (IBLA)

Latin America - Support Office

Allied Telesyn International
19800 North Creek Parkway, Suite 200
Bothell, WA 98011 USA
Tel: +1 425 481 3852
Fax: +1 425 489 9191
Toll Free (Mexico & Puerto Rico): (95-800) 424 5012 ext. 3852

Latin America – Mexico
Allied Telesyn International
AV. Insurgentes Sur # 800, Piso 8
Col. Del Valle
México, DF, 03100
Tel: +52 55 5448 4989
Fax: +52 55 5448 4910

Portugal
Allied Telesyn International
Centro de Escritórios das Laranjeiras
Praça Nuno Rodrigues dos Santos, Nº 7 Sala 211
1600-171 Lisbon
Tel: +351 21 721 74 00
Fax: +351 21 727 91 26

Spain
Allied Telesyn International S.L.U
Plaza de España
18-4ª Ofic. 3, 28008 Madrid
Tel: +34 91 559 1055
Fax: +34 91 559 2644

SERVICE CENTRES

Italy
Allied Telesyn International Services Srl
International Training Centre
Regione Torre Pernice, 2
17031 Albenga (SV)
Tel: +39 0182 586183
Fax: +39 0182 586189

The Netherlands
Allied Telesyn International BV
European Shipping Centre
Hoeksteen 26
2132 MS Hoofddorp
Tel: +31 20 6540 262
Fax: +31 20 6540 270

United Kingdom
Allied Telesyn International Services Ltd
International Service Logistics Centre
Unit 24, Westmead Industrial Estate
Swindon, SN5 7YT
Tel: +44 1793 501401
Fax: +44 1793 431099

WORLDWIDE LOCATIONS

Australia
Allied Telesyn International (Aust) Pty Ltd
Level 1, 84 Alexander Street
Crows Nest, NSW 2065
Tel: +61 2-9438-5111
Fax: +61 2-9438-4966

Canada
Allied Telesyn International Canada Inc.
1595 — 16th Avenue
Suite 301
Richmond Hill, ON. L4B 3N9
Tel: +1 905 709-7444
Fax: +1 905 709-7400

China
Allied Telesyn (China) Ltd.
Rm1006-1009, China Life Tower16
Chaos Yang Men Way Street
Chaos Yang District
Beijing, 100020, PRC
Tel: +86 10-85252299
Fax: +86 10-85252298

Japan – Headquarters
Allied Telesyn KK
4th Floor, TOC Building
7-22-17 Nishi-Gotanda
Shinagawa-ku, Tokyo 141-8635
Tel: +81 3 5437 6000
Fax: +81 3 5437 6060

Singapore
Allied Telesyn International (Asia) Pte Ltd
1026 Tai Seng Avenue, #04-3544
Tai Seng Industrial Estate
Singapore 534413
Tel: +65 6383 3832
Fax: +65 6383 3830

Taiwan
Allied Telesyn
5F-2, No. 248, Sec.3, Nanking E. Rd.
Taipei 105
Tel: +886 2-2731-3171
Fax: +886 2-2731-3271

United States – Headquarters
Allied Telesyn Inc.
19800 North Creek Parkway, Suite 200
Bothell, WA 98011
Tel: +1 425 487-8880
Toll Free: +1-800 424-5012
Fax: +1 425 489-9191/3895

RESEARCH & DEVELOPMENT

Italy
Allied Telesyn KK
Piazza Tirana n. 24/4 B
20147 Milano
Tel: +39 02 414114.1
Fax: +39 02 414114.62

Japan
Allied Telesyn KK
5/8th Floor, TOC Building 2
7-22-17 Nishi-Gotanda
Shinagawa-ku, Tokyo 141-8635
Hardware
Tel: +81 3 5436 8350
Fax: +81 3 5436 8351
Software
Tel: +81 3 5436 8360
Fax: +81 3 5436 8361

New Zealand
Allied Telesyn Research Limited
27 Nazareth Avenue
PO Box 8011
Riccarton
Christchurch
Tel: +64 3 339 3000
Fax: +64 3 339 3001

Philippines
Allied Telesyn Philippines, Inc.
3/F Net One Center
3rd Avenue Cor. 26th Street
Binifacio Global City
1634 Taguig, MM
Tel: +63 2 815-3130
Fax: +63 2 815-3170

United States
Allied Telesyn Inc.
960 Stewart Drive, Suite B
Sunnyvale, CA 94085
Tel: +1 408 730-0950
Fax: +1 408 736-0100
Toll Free: +1-800 424-4284

Allied Telesyn Networks Inc.
920 Main Campus Drive STE 450
Raleigh, North Carolina - 27606
Tel: +1 919 645 4800
Fax: +1 919 645 4848

