

SE100S3 Firmware Update Procedure

Intended for:

SE100S37/100G	SE100S37/100GBK
SE100S37/200G	SE100S37/200GBK
SE100S37/400G	SE100S37/400GBK

Release Notes for SE100S3, Firmware Rev. 515ABBF0 (12/05/12)

- Enables TRIM support
- Improved TRIM operation during SATA error handling
- Improved handling of internal command errors
- Improved the efficiency of flash error recovery
- Fixed an issue where S.M.A.R.T. Attribute 194 would not report “128” if the temperature sensor on the I2C times out

Warning! - Before attempting to update your SE100S3 SSD, you must first disable TRIM. Please follow the steps below before proceeding with your firmware update.

Disabling TRIM within Windows

Step 1: Open a command prompt with administrator privileges and type in the following string:

fsutil behavior set disabledeletenotify 1

```
C:\Windows\system32\cmd.exe
Microsoft Windows [Version 6.1.7601]
Copyright (c) 2009 Microsoft Corporation. All rights reserved.
C:\Windows\system32>fsutil behavior set disabledeletenotify 1
DisableDeleteNotify = 1
```

Step 2: Once you have typed in the string and pressed “Enter”, you can confirm that TRIM is disabled by typing:

fsutil behavior query disabledeletenotify

```
C:\Windows\system32>fsutil behavior query disabledeletenotify
DisableDeleteNotify = 1
```

Step 3: If the string reads *DisableDeleteNotify = 1* then TRIM is disabled and you can proceed with the firmware update. If it reads *DisableDeleteNotify = 0*, TRIM was not disabled and you will need to perform the procedure again.

```
C:\Windows\system32>fsutil behavior query disabledeletenotify
DisableDeleteNotify = 1
```

System Preparation:

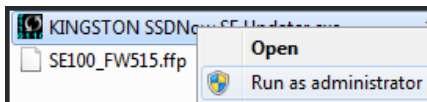
- As a precaution, perform a backup of all your data to ensure no data is lost during the firmware update process.
- You must be running Windows 7, Vista SP2, or XP SP3 in AHCI mode for this to function properly.
- Do not unplug power at any time during the firmware update.
- **Intel and AMD** users must use the Microsoft AHCI driver for the update procedure to complete successfully.
- Use only native SATA ports to perform upgrade. Do NOT use third party controllers. You cannot update the SSD through a RAID controller.
- Notebook users, please charge battery to full charge or use AC power to prevent any power loss during firmware upgrade.

Step 1: Launching the utility

Before proceeding with Step 1, please read the warning message above.

First, locate your download. Double-click the zip file and extract it to your preferred location. You will see the update utility, the instructions in .pdf form and the firmware file.

If you are using Windows 7 or Vista SP2, right-click the Kingston *SSDNow* SF Updater and select “Run as administrator” to launch the update utility.



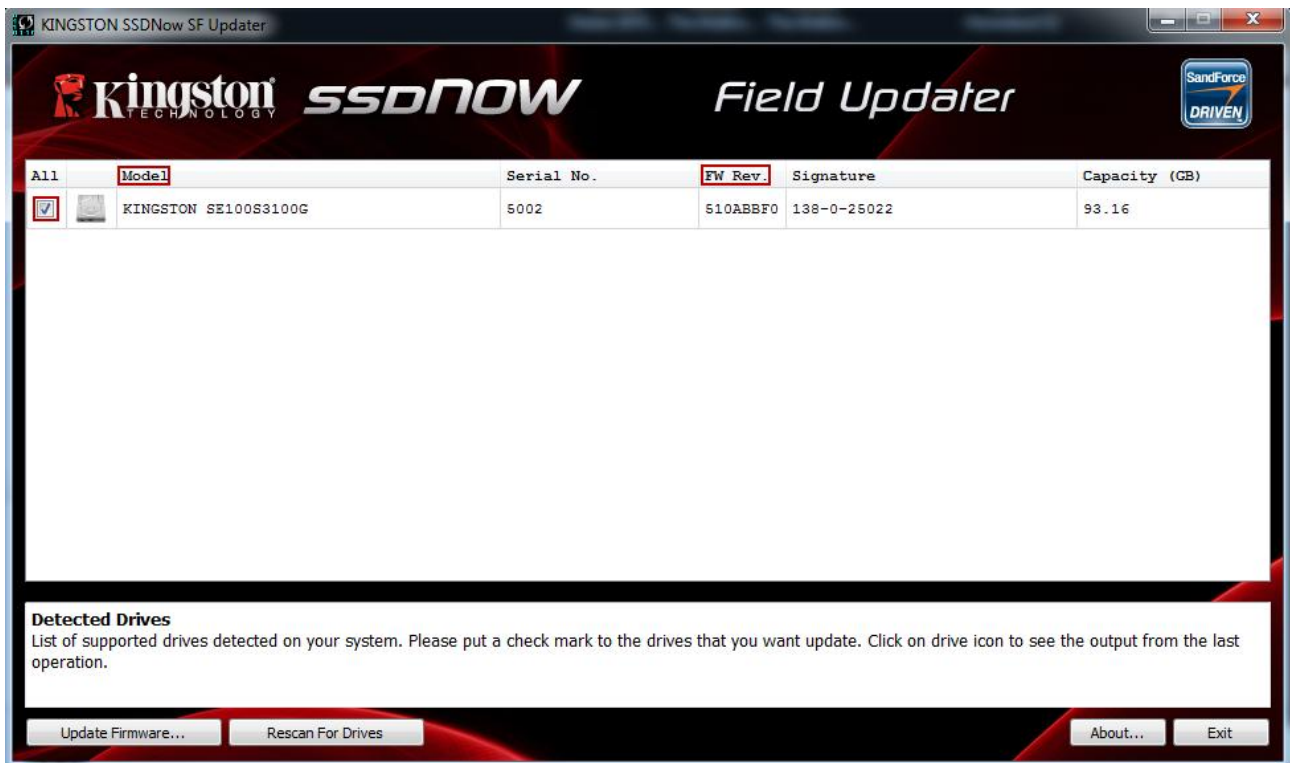
If you are using XP SP3, double-click the Kingston *SSDNow* SF Updater and proceed.

Step 2: Confirming your model number and firmware revision

Confirm that your drives are present and select the one you wish to update by checking the selection box next to the model number.

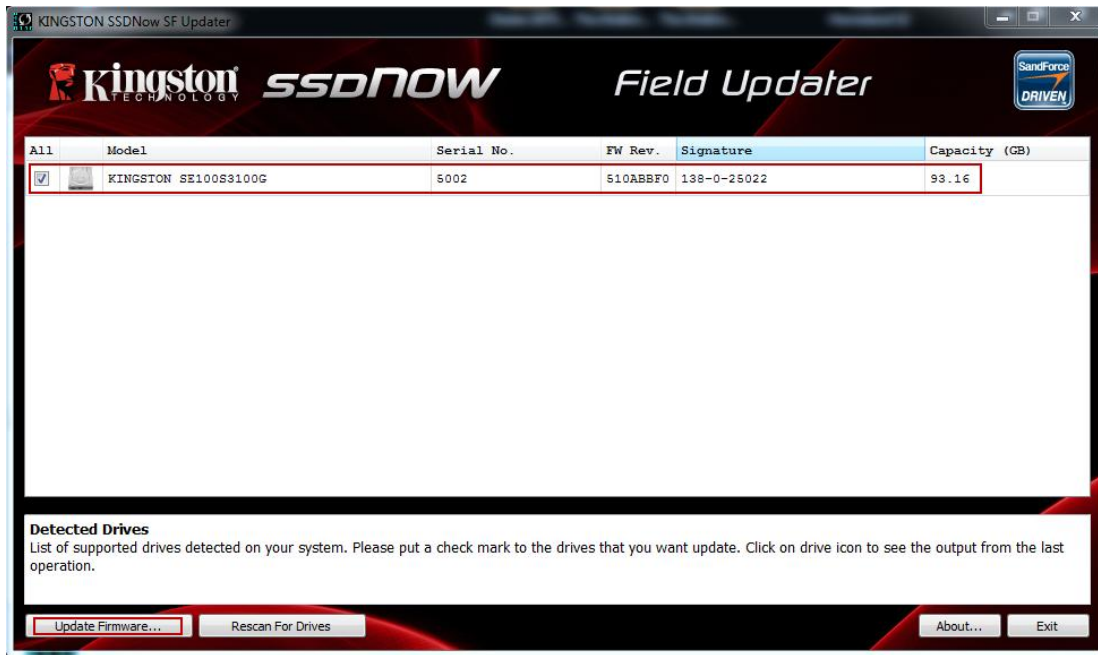
- If you are updating the SE100, you will see SE100S3xxxG

(Note: If you wish to update multiple drives, you must do so one at a time.)



Step 3: Selecting the “Update Firmware” option

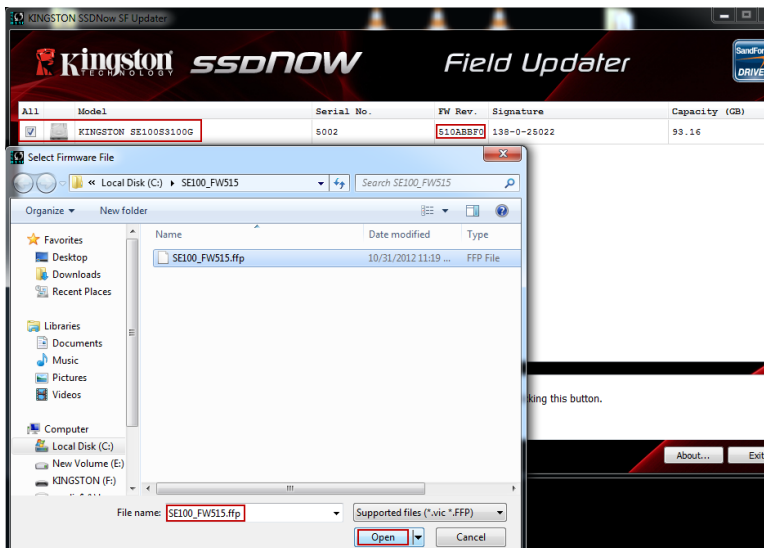
Once you’ve confirmed that you need to update your drive’s firmware and selected the box next to the corresponding Model Name, click on the **Update Firmware** button located in the lower left corner of the application interface.



Step 4: Locating the update file

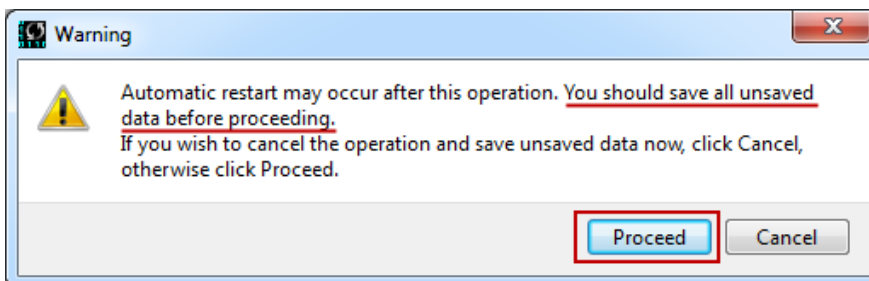
You will be prompted to select the appropriate firmware file you wish to update with. To do this, navigate to where you downloaded the update and select the file that matches the drive you wish to update.

- If you are updating the SE100, you will see SE100_FWxxx.ffp



Step 5: Alert messaging and proceeding to update

If you haven't already backed up your data as indicated in the "System Preparation" section of this document, you should cancel the update, back up your data and then proceed back through steps 1-5. If you have successfully backed up your data, select **Proceed** to continue the update process.



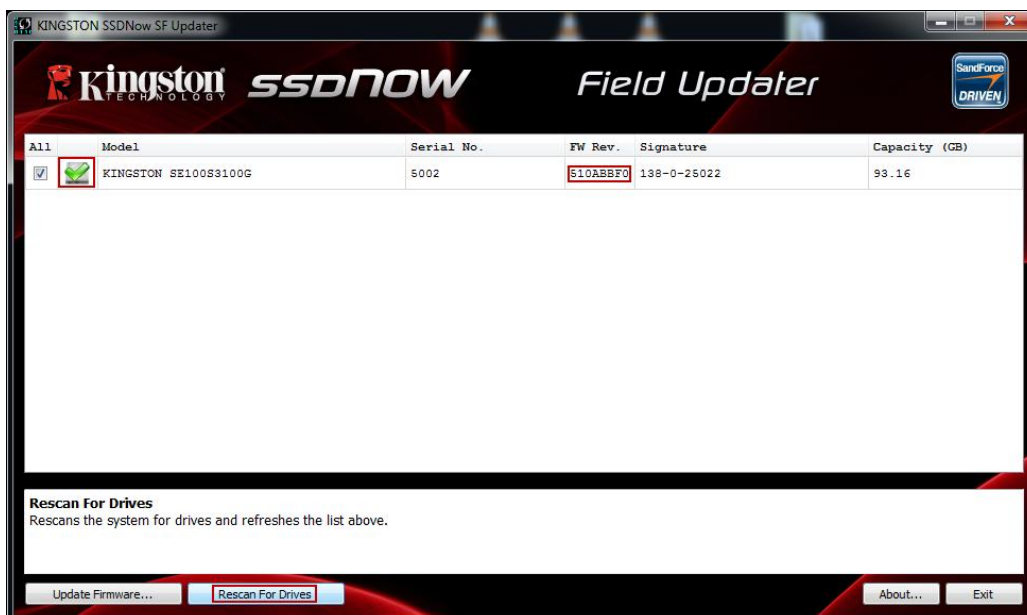
Step 6: Successful update

The update process will take approximately 1 minute to complete. When it has completed successfully, you will receive a green check next to your model. Proceed to step 7 for additional confirmation information.

All	Model	Serial No.	FW Rev.	Signature	Capacity (GB)
<input checked="" type="checkbox"/>	 KINGSTON SE100S3100G	5002	510ABBF0	138-0-25022	93.16


Step 7: Confirming successful update

As a secondary confirmation, select the **Rescan for Drives** button in the lower left corner of the application. This will enable the utility to refresh your drive so that you can verify that your SDD's firmware has been updated. Continue to step 8.



Step 8: Confirming successful update (cont.)

Your updated firmware revision will be displayed under "FW Rev." and should read "515xxxxx".

All	Model	Serial No.	FW Rev.	Signature	Capacity (GB)
<input type="checkbox"/>	 KINGSTON SE100S3100G	50026B7226021FC3	515ABBF0	138-0-25022	93.16

Step 9: Repeating the Update Process

If you would like to update additional drives of different capacities, you will need to update them one at a time. To do this, begin again at “Step 1” and repeat this process until you’ve completed your firmware updates.

Step 10: Closing the update utility

Close the Field Updater by clicking the “X” in the top right corner of the application. Your firmware update is complete.



Step 11: Restarting your system

After completing the firmware update process, Kingston recommends that you safely power down your system, wait 10 seconds and then power on.

Additional Information:

Enabling TRIM within Windows after successful update

If you have successfully updated all of your SSDs, it is now safe to re-enable TRIM.

Step 1: Open a command prompt with administrator privileges and type in the following string:

fsutil behavior set disabledeletenotify 0

```
C:\>fsutil behavior set disabledeletenotify 0
DisableDeleteNotify = 0
C:\>
```

Step 2: Once you have typed in the string and pressed “Enter”, you can confirm that TRIM is enabled by typing:

fsutil behavior query disabledeletenotify

If the string reads ***DisableDeleteNotify = 0*** then TRIM is re-enabled on your system.