



Philips
LCD monitor with
SmartImage

S Line
22" (55.9 cm)
1680 x 1050 (WSXGA)

220S4LYCB



Sustainable productivity

with an energy-efficient LED display

The Philips ergonomic LED display using 25% recycled materials and PVC-BFR free housing is ideal for eco-friendly productivity

Sustainable Eco-design

- SmartPower: Up to 50% power saving
- 100% recyclable packaging
- Zero mercury content
- PVC-BFR free housing

Great performance

- LED technology ensures natural colours
- TrueVision ensures lab quality images
- DisplayPort connection for maximum visuals

Designed for people

- SmartErgoBase enables user-friendly ergonomic adjustments
- Low bezel-to-table height for maximum reading comfort

Easy to experience

- SmartImage pre-sets for easy optimised image settings
- SmartControl for easy performance tuning

PHILIPS

Highlights

SmartPower

SmartPower is an artificial intelligent technology which dynamically analyses the content of the screen image to achieve power saving. The backlight intensity can be controlled automatically and pre-set by the system to reduce the power consumption by up to 50%, which saves substantially on energy costs

100% recyclable packaging

"Philips is committed to using sustainable, eco-friendly materials across its monitor range. All body plastic parts, metal chassis parts and packing materials use 100% recyclable materials. In some selected models we utilise up to 65% post-consumer recycled plastics. Strict adherence to RoHS standards ensures substantial reduction or elimination of toxic substances like lead, for example. Mercury content in monitors with CCFL backlights has been reduced significantly and eliminated completely in monitors with LED backlights. Visit Philips at <http://www.asimpleswitch.com/global/> to learn more.

Zero mercury content

Philips monitors with LED backlighting are free from Mercury, one of the most toxic natural substances, which affects humans and animals. This reduces the environmental impact of the display throughout its lifecycle, from manufacturing to disposal.

PVC-BFR free housing

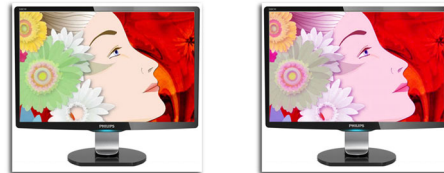
This Philips monitor housing is free from brominated flame retardant and polyvinyl chloride (PVC-BFR free)

LED technology

White LED's are solid state devices which light up to full, consistent brightness faster saving startup time. LED's are free from mercury

content, which allows for eco-friendly recycling and disposal process. LED's allow for better dimming control of the LCD backlight, resulting in a super high contrast ratio. It also gives superior colour reproduction thanks to consistent brightness across the screen.

TrueVision



TrueVision On

TrueVision Off

TrueVision is a proprietary Philips technology that uses an advanced algorithm for testing and aligning monitor display, which gives you the ultimate display performance. Philips ensures that TrueVision monitors leave the factory fine-tuned with this process giving you consistent colour and picture quality.

DisplayPort connection



DisplayPort

DisplayPort is a digital link from PC to monitor without any conversion. With higher capabilities than DVI standard, it is fully capable to support up to 15 metre cables and 10.8 Gbps/sec data transfer. With this high performance and zero latency, you get the fastest imaging and refresh rates — making DisplayPort the best choice for not only

general office or home use, but also for the more demanding gaming and films, video editing and more. It also keeps interoperability in mind via the use of various adapters.

SmartErgoBase



The SmartErgoBase is a monitor base that delivers ergonomic display comfort and provides cable management. The user-friendly height, swivel, tilt and rotation angle adjustments of the base allow the monitor to be positioned for maximum comfort to help ease the physical strains of a long workday. In addition, cable management reduces cable clutter and keeps the workspace neat and professional.

Low bezel-to-table height



Thanks to its advanced SmartErgoBase, the Philips monitor can be lowered down almost to desk level for a comfortable viewing angle. Low bezel-to-table height is the perfect solution if you use bifocals, trifocals or progressive lens glasses for your computing work. Additionally, it allows users of different heights to use the monitor at their preferred angle and height settings, helping them to reduce fatigue and strain.



Specifications

Picture/Display

- LCD panel type: TFT-LCD
- Backlight type: W-LED system
- Panel Size: 22 inch/55.9 cm
- Effective viewing area: 473.76 (H) x 296.1 (V)
- Aspect ratio: 16:10
- Optimum resolution: 1680 x 1050 @ 60 Hz
- Response time (typical): 5 ms
- Brightness: 250 cd/m²
- Contrast ratio (typical): 1000:1
- SmartContrast: 20,000,000:1
- Pixel pitch: 0.282 x 0.282 mm
- Viewing angle: 170° (H)/160° (V), @ C/R > 10
- Picture enhancement: SmartImage
- Display colours: 16.7 M
- Scanning Frequency: 30 - 83 kHz (H) / 56 - 76 Hz (V)
- sRGB

Connectivity

- Signal Input: VGA (Analogue), DVI-D (digital, HDCP), DisplayPort
- Sync Input: Separate Sync, Sync on Green
- Audio (In/Out): Audio out

Convenience

- User convenience: SmartImage, Brightness, SmartPower, Menu, Power On/Off
- Control software: SmartControl
- OSD Languages: English, French, German, Italian, Portuguese, Russian, Simplified Chinese, Spanish, Brazil Portuguese, Czech, Dutch, Finnish, Greek, Hungarian, Japanese, Korean, Polish, Swedish, Traditional Chinese, Turkish, Ukrainian
- Other convenience: VESA mount (100 x 100 mm), Kensington lock
- Plug and Play Compatibility: DDC/CI, Mac OS X, sRGB, Windows 10 / 8.1 / 8 / 7

Stand

- Height adjustment: 110 mm
- Pivot: 90 degree
- Swivel: -65/65 degree
- Tilt: -5/20 degree

Power

- On mode: 15.10 W (EnergyStar 7.0 test method)
- Standby mode: 0.3 W (typ.)

- Off mode: 0.3 W (typ.)
- Power LED indicator: Operation - White, Standby mode - White (flashing)
- Power supply: Built-in, 100-240 VAC, 50-60 Hz

Dimensions

- Packaging in mm (W x H x D): 565 x 391 x 186 mm
- Product with stand (mm): 504 x 509 x 227 mm
- Product without stand (mm): 504 x 349 x 59 mm

Weight

- Product with packaging (kg): 7.05 kg
- Product with stand (kg): 5.20 kg
- Product without stand (kg): 3.38 kg

Operating conditions

- Temperature range (operation): 0°C to 40°C °C
- Temperature range (storage): -20°C to 60°C °C
- Relative humidity: 20%–80% %
- Altitude: Operation: +12,000 ft (3658 m), Non-operation: +40,000 ft (12,192 m)
- MTBF (demonstrated): 70,000 hrs (excluded backlight)

Sustainability

- Environmental and energy: EnergyStar 7.0, EPEAT Gold*, RoHS
- Recyclable packaging material: 100 %
- Recycled material: 25%
- Specific Substances: PVC/BFR free housing, Mercury free, Lead free

Compliance and standards

- Regulatory Approvals: CE Mark, FCC Class B, SEMKO, UL/cUL, BSMI, CU-EAC, TCO certified, TUV Ergo, TUV/GS, CECP, WEEE

Cabinet

- Front bezel: Black/Black
- Rear cover: Black/Black
- Foot: Black/Black
- Finish: Texture

What's in the box?

- Monitor with stand
- Cables: VGA, Power
- User Documentation



Issue date 2017-11-16

Version: 2.0.1

12 NC: 8670 000 89206
EAN: 87 12581 64154 2

© 2017 Koninklijke Philips N.V.
All Rights reserved.

Specifications are subject to change without notice.
Trademarks are the property of Koninklijke Philips N.V.
or their respective owners.

www.philips.com

* EPEAT Gold is valid only where Philips registers the product. Please visit www.epeat.net for registration status in your country.