



Philips Brilliance
LED-backlit LCD monitor

Notebook docking display
23" (58.4 cm)
Full HD (1920 x 1080)

Brilliance



231P4QUPES

Simplicity with notebook docking display

expand view with single cable

This innovative notebook docking display with multimedia enables easy port replication. Expand your viewing workspace, keep peripherals connected and access the Internet, all with a single SuperSpeed USB cable.

Simplicity makes sense

- Single USB 3.0 cable docks your notebook to the display
- Transmit video and audio from the notebook with a single cable
- Connect to the Internet and intranet with the built in Ethernet port
- Access all peripherals, keyboard and mouse from the hub
- True plug and play for hassle-free dual display setup

Ergonomic design

- SmartErgoBase enables user-friendly ergonomic adjustments
- Low bezel-to-table height for maximum reading comfort

Sustainable Eco-friendly solution

- IPS technology for full colours and wide viewing angles
- PowerSensor saves up to 80% energy costs
- 65% post-consumer recycled plastics with TCO Edge
- PVC-BFR free housing

PHILIPS

LED-backlit LCD monitor
Notebook docking display 23" (58.4 cm), Full HD (1920 x 1080)

231P4QUPES/00

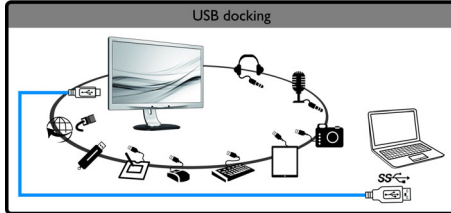
Highlights

Expand view with single cable



This innovative large Philips display enables easy port replication for any notebook. Particularly suitable for the latest Ultra book type devices with limited connectors, this display with built-in USB 3.0 hub, Ethernet and stereo speakers enables you to transmit video, audio and connect to Internet or intranet directly, using a single cable USB connection. With this advanced USB 3.0 or USB 2.0 plug and play connection, you can now expand your desktop using both your NBPC and Philips display's real-estate without having to worry about cumbersome resolution adjustments or mess around with cables.

USB hub for peripherals



You now have the option to connect a full sized keyboard and mouse to the Philips display's USB hub to improve your productivity. Simply connect your Notebook to this display with a single USB cable, and you are ready to utilise the additional peripherals such as the external HDD, camera, USB drive

along with Full HD video, Audio and Internet functions. Should you prefer, you can of course still utilise your NBPC's keyboard and track pad as usual.

SmartErgoBase



The SmartErgoBase is a monitor base that delivers ergonomic display comfort and provides cable management. The user-friendly height, swivel, tilt and rotation angle adjustments of the base allow the monitor to be positioned for maximum comfort to help ease the physical strains of a long workday. In addition, cable management reduces cable clutter and keeps the workspace neat and professional.

Low bezel-to-table height



Thanks to its advanced SmartErgoBase, the Philips monitor can be lowered down almost to desk level for a comfortable viewing angle. Low bezel-to-table height is the perfect solution if you use bifocals, trifocals or progressive lens glasses for your computing

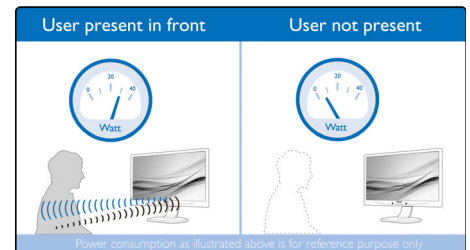
work. Additionally, it allows users of different heights to use the monitor at their preferred angle and height settings, helping them to reduce fatigue and strain.

IPS technology

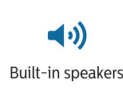


IPS displays use advanced technology that gives you extra-wide viewing angles of 178/178 degrees, making it possible to view the display from almost any angle — even in 90-degree Pivot mode! Unlike standard TN panels, IPS displays gives you remarkably crisp images with vivid colours, making it ideal not only for Photos, films and web browsing, but also for professional applications that demand colour accuracy and consistent brightness at all times.

PowerSensor



PowerSensor is a built-in 'people sensor' that transmits and receives harmless infrared signals to determine if the user is present and then automatically reduces monitor brightness when then user steps away from the desk, cutting energy costs by up to 80 percent and prolonging monitor life



Specifications

Picture/Display

- LCD panel type: IPS LCD
- Backlight type: W-LED system
- Panel Size: 23 inch/58.4 cm
- Effective viewing area: 509.18 x 286.41 mm
- Aspect ratio: 16:9
- Optimum resolution: 1920 x 1080 @ 60 Hz
- Response time (typical): 14 (Grey to Grey) ms
- SmartResponse (typical): 7 ms (GTG_BW)
- Brightness: 250 cd/m²
- Contrast ratio (typical): 1000:1
- SmartContrast: 20,000,000:1
- Pixel pitch: 0.265 x 0.265 mm
- Viewing angle: 178° (H)/178° (V), @ C/R > 10
- Picture enhancement: SmartImage
- Display colours: 16.7 M
- Scanning Frequency: 30–83 kHz (H)/56–75 Hz (V)
- sRGB

Connectivity

- Signal Input: VGA (Analogue)
- Sync Input: Separate Sync (VGA only), Sync on Green (VGA only)

USB Connectivity

- USB: USB 2.0 x 1, USB 3.0 x 2
- Signal Input: USB 3.0 upstream
- Audio In/Out: through USB
- RJ45: through USB, 1 Gbps
- Microphone in: through USB
- Headphone out: through USB

Convenience

- Built-in Speakers: 1.5 W x 2
- User convenience: SmartImage, Input, PowerSensor, Menu, Power On/Off
- Control software: SmartControl Premium (VGA only), DisplayLink Graphics Software
- OSD Languages: English, French, German, Italian, Portuguese, Russian, Simplified Chinese, Spanish, Korean
- Other convenience: Kensington lock, VESA mount (100 x 100 mm)
- Plug and Play Compatibility: DDC/CI (VGA only), Mac OS X, sRGB, Windows 10 / 8.1 / 8 / 7

Stand

- Height adjustment: 130 mm
- Pivot: 90 degree

- Swivel: -65/65 degree
- Tilt: -5/20 degree

Power

- ECO mode: 11.3 W (typ.)
- On mode: 20.2 W (typ.) (EnergyStar 6.0 test method)
- Standby mode: <0.5 W (typ.)
- Off mode: Zero watts with AC switch
- Power LED indicator: Operation - White, Standby mode - White (flashing)
- Power supply: 100-240 VAC, 50-60 Hz, Built-in

Dimensions

- Product with stand (max height): 547 x 515 x 220 mm
- Product without stand (mm): 547 x 343 x 60 mm
- Packaging in mm (W x H x D): 600 x 400 x 263 mm

Weight

- Product with stand (kg): 6.00 kg
- Product without stand (kg): 3.90 kg
- Product with packaging (kg): 8.41 kg

Operating conditions

- Temperature range (operation): 0°C to 40°C °C
- Temperature range (storage): -20°C to 60°C °C
- Relative humidity: 20–80% %
- Altitude: Operation: +12,000 ft (3658 m), Non-operation: +40,000 ft (12,192 m)
- MTBF: 30,000 (backlight) hour(s)

Sustainability

- Environmental and energy: PowerSensor, EnergyStar 6.0, EPEAT Gold*, TCO edge, RoHS
- Recyclable packaging material: 100 %
- Post-consumer recycled plastic: 65%
- Specific Substances: PVC/BFR free housing, Mercury free, Lead free

Compliance and standards

- Regulatory Approvals: CE Mark, FCC Class B, SEMKO, cETLus, EAC, PSB, TCO 6.0, TUV Ergo, TUV/GS, WEEE, CCC, CECP, EMC, C-tick

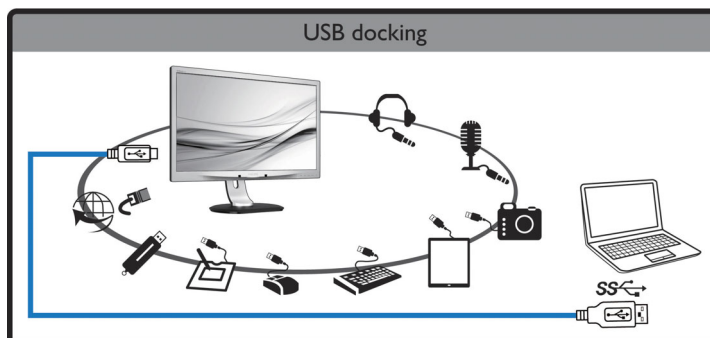
Cabinet

- Front bezel: Silver
- Rear cover: Black

- Foot: Black
- Finish: Texture

What's in the box?

- Monitor with stand
- Cables: VGA, USB, Power
- User Documentation



Issue date 2016-10-06

Version: 5.0.1

12 NC: 8670 001 20839
EAN: 87 12581 72918 9

© 2016 Koninklijke Philips N.V.
All Rights reserved.

Specifications are subject to change without notice.
Trademarks are the property of Koninklijke Philips N.V.
or their respective owners.

www.philips.com

* We recommend you use a USB 3.0 connection between your Notebook PC and the Philips display to ensure smooth images, video and audio.

* Activities such as screen sharing and online streaming over the Internet can impact your network performance. Your hardware and network bandwidth will determine the overall audio and video quality.

* The notebook, keyboard and mouse shown are for illustration purpose only and not included with the product.

* "IPS" word mark / trademark and related patents on technologies belong to their respective owners.

* EPEAT Gold is valid only where Philips registers the product. Please visit www.epeat.net for registration status in your country.

* Smart response time is the optimum value from either GtG or GtG (BW) tests.