



# HP EliteOne 800 G4 23.8-inch Touch All-in-One PC

Powered for the enterprise

Modernize any workspace with an AiO PC that makes a great first impression. The HP EliteOne AiO delivers serious performance, engaging collaboration, multi-faceted security, and purposeful manageability in a stunning and sleek 23.8-inch diagonal micro-edge bezel design.



HP recommends Windows 10 Pro for business

- Windows 10 Pro<sup>1</sup>
- 23.8" diagonal screen

#### Amazing from any angle

- Count on this purposefully designed AiO to impress. Work in style on the elegant HP EliteOne 800 AiO with its thin profile, micro-edge anti-glare touch display, and superb cable management.

#### Performance first

- Users will enjoy powerful 8th Gen Intel® Core™ processors<sup>2</sup>, Intel® Optane™ memory<sup>3</sup> and optional AMD Radeon™ discrete graphics<sup>4</sup>.

#### Strong security, powerful manageability

- Get powerful protection and simplified management from our most secure and manageable PCs. HP Sure Start Gen4<sup>6</sup> protects against BIOS attacks while the HP Manageability Integration Kit<sup>7</sup> allows you to easily manage devices through Microsoft System Center Configuration Manager.

#### See and hear them clearly

- Collaborate with the sharpness of a face-to-face meeting on the 23.8-inch diagonal FHD touch display with crystal-clear audio and either a front-facing pop-up IR camera with a rear-facing FHD Camera<sup>8</sup>, or a front facing pop-up FHD camera<sup>8</sup>.

#### Featuring

- Power through your day with Windows 10 Pro with built-in security, collaboration, and connectivity.
- Protect the firmware that antivirus can't reach! The hardware-enforced self-healing protection offered by HP Sure Start Gen4 automatically recovers the BIOS from malware, rootkits, or corruption.
- Keep your critical applications and processes running even if malware tries to shut them down with self-healing protection.
- Help protect your PC from websites, attachments, malware, ransomware, and viruses with hardware-enforced security from HP Sure Click.
- Quickly and securely restore PCs to the latest image using a network connection with HP Sure Recover.
- Improve the quality and security of custom Windows images with HP Image Assistant Gen3 which assists ITDMs with image creation, identifies problems, and provides recommendations and remediation.
- The HP Manageability Integration Kit helps speed up image creation and management of hardware, BIOS, and security through Microsoft System Center Configuration Manager.
- Fortify your security with up to three authentication factors including fingerprints and facial recognition.

## HP EliteOne 800 G4 23.8-inch Touch All-in-One PC Specifications Table



<b>Available Operating Systems</b>	Windows 10 Pro 64 – HP recommends Windows 10 Pro for business <sup>1</sup> Windows 10 Pro 64 (National Academic only) <sup>2</sup> Windows 10 Home 64 <sup>1</sup> Windows 10 Home Single Language 64 <sup>1</sup> FreeDOS
<b>Processor family<sup>19,21</sup></b>	Intel® Celeron® processor (G4900 is Windows 10 only); 8th Generation Intel® Core™ i7 processor (i7-8700); 8th Generation Intel® Core™ i7 + processor (Core™ i7 and Intel® Optane™ memory); 8th Generation Intel® Core™ i5 + processor (Core™ i5 and Intel® Optane™ memory); Intel® Pentium® processor (G5400, G5400T, G5500, G5500T, G5600 are Windows 10 only); 8th Generation Intel® Core™ i5 processor (i5-8500, i5-8600); 8th Generation Intel® Core™ i3 processor (i3-8100, i3-8300)
<b>Available Processors<sup>3,20,22</sup></b>	Intel® Core™ i3-8100 with Intel® UHD Graphics 630 (3.6 GHz, 6 MB cache, 4 cores); Intel® Celeron® G4900 with Intel® UHD Graphics 610 (3.1 GHz, 2 MB cache, 2 cores); Intel® Pentium® Gold G5400 with Intel® UHD Graphics 610 (3.7 GHz, 4 MB cache, 2 cores); Intel® Core™ i3-8300 with Intel® UHD Graphics 630 (3.7 GHz, 8 MB cache, 4 cores); Intel® Pentium® Gold G5600 with Intel® UHD Graphics 630 (3.9 GHz, 4 MB cache, 2 cores); Intel® Pentium® Gold G5500T with Intel® UHD Graphics 630 (3.2 GHz, 4 MB cache, 2 cores); Intel® Pentium® Gold G5400T with Intel® UHD Graphics 610 (3.1 GHz, 4 MB cache, 2 cores); Intel® Pentium® Gold G5500 with Intel® UHD Graphics 630 (3.8 GHz, 4 MB cache, 2 cores); Intel® Core™ i7-8700 vPro™ processor with Intel® UHD Graphics 630 (3.2 GHz base frequency, up to 4.6 GHz with Intel® Turbo Boost Technology, 12 MB cache, 6 cores); Intel® Core™ i7 + 8700 vPro™ processor (Core™ i7 and 16 GB Intel® Optane™ memory) with Intel® UHD Graphics 630 (3.2 GHz base frequency, up to 4.6 GHz with Intel® Turbo Boost Technology, 12 MB cache, 6 cores); Intel® Core™ i5-8600 vPro™ processor with Intel® UHD Graphics 630 (3.1 GHz base frequency, up to 4.3 GHz with Intel® Turbo Boost Technology, 9 MB cache, 6 cores); Intel® Core™ i5 + 8600 vPro™ processor (Core™ i5 and 16 GB Intel® Optane™ memory) with Intel® UHD Graphics 630 (3.1 GHz base frequency, up to 4.3 GHz with Intel® Turbo Boost Technology, 9 MB cache, 6 cores); Intel® Core™ i5-8500 vPro™ processor with Intel® UHD Graphics 630 (3 GHz base frequency, up to 4.1 GHz with Intel® Turbo Boost Technology, 9 MB cache, 6 cores); Intel® Core™ i5 + 8500 vPro™ processor (Core™ i5 and 16 GB Intel® Optane™ memory) with Intel® UHD Graphics 630 (3 GHz base frequency, up to 4.1 GHz with Intel® Turbo Boost Technology, 9 MB cache, 6 cores)
<b>Chipset</b>	Intel® Q370
<b>Brightness</b>	250 nits
<b>Form factor</b>	All-in-one
<b>Maximum memory</b>	32 GB DDR4-2666 SDRAM <sup>4,13</sup> Transfer rates up to 2666 MT/s.
<b>Memory slots</b>	2 SODIMM
<b>Internal storage</b>	500 GB up to 1 TB 7200 rpm SATA <sup>5</sup> up to 2 TB 5400 rpm SATA <sup>5</sup> up to 500 GB SATA SED Opal 2 HDD <sup>5</sup> up to 500 GB 7200 rpm SATA FIPS SED <sup>5</sup> 256 GB up to 512 GB SATA SED Opal 2 TLC SSD <sup>5</sup> 256 GB up to 512 GB SATA FIPS SSD <sup>5</sup> 128 GB up to 512 GB PCIe® NVMe™ M.2 SSD <sup>5</sup> 128 GB up to 1 TB PCIe® NVMe™ TLC M.2 SSD <sup>5</sup> 256 GB up to 512 GB PCIe® NVMe™ SED Opal 2 TLC M.2 SSD <sup>5</sup> 128 GB up to 512 GB SATA SSD <sup>5</sup>
<b>Optical drive</b>	HP 9.5 mm Slim Blu-ray writer double layer; HP 9.5 mm Slim DVD-ROM double layer; HP 9.5 mm Slim DVD-Writer double layer <sup>17,41</sup>
<b>Display</b>	23.8" diagonal FHD IPS widescreen WLED-backlit touch screen (1920 x 1080)
<b>Available Graphics</b>	Integrated: Intel® UHD Graphics 630; Intel® UHD Graphics 610
<b>Audio</b>	Audio by Bang & Olufsen, headset and headphone side ports (3.5 mm), line out rear port (3.5 mm), high performance integrated stereo speakers <sup>18</sup>
<b>Expansion slots</b>	1 M.2 2230; 2 M.2 2230/2280 (1 M.2 2230 slot for WLAN and 2 M.2 2230/2280 slot for storage.)
<b>Ports and Connectors</b>	Side: 1 headphone; 1 headset connector Bottom: 1 audio-out; 1 DisplayPort™ 1.2; 1 HDMI; 1 power connector; 1 RJ-45; 2 USB 3.1 Gen 1; 4 USB 3.1 Gen 2; 1 USB 3.1 Type-C™ Gen 2 <sup>5</sup> Optional: 1 SD 4 card reader
<b>Input devices</b>	HP Conferencing Keyboard; HP USB Business Slim Keyboard; HP USB Keyboard; HP Wireless Business Slim Keyboard and Mouse Combo; HP Wireless Collaboration Keyboard <sup>14</sup> ; HP USB 1000 dpi Laser Mouse; HP USB Antimicrobial Mouse; HP USB Hardened Mouse; HP USB Optical Mouse; HP USB Premium Mouse <sup>8,16</sup>
<b>Communications</b>	LAN: Integrated Intel® I219LM GbE LOM WLAN: Realtek RTL8822BE-CG 802.11a/b/g/n/ac (2x2) with Bluetooth® 4.1 M.2 PCIe®; Intel® Dual Band Wireless-AC 9560 802.11ac (2x2) and Bluetooth® 5 M.2, non-vPro™; Intel® Dual Band Wireless-AC 9560 802.11ac (2x2) and Bluetooth® 5 M.2, vPro™; Realtek RTL8821CE-CG 802.11a/b/g/n/ac (1x1) with Bluetooth® 4.2 M.2 PCIe® <sup>7</sup> ;
<b>Drive Bays</b>	One 2.5" HDD
<b>Camera</b>	2 MP full HD pop-up webcam with integrated dual array digital microphone, maximum resolution of 1920 x 1080; 2 MP, 1080p, FHD pop-up Camera with IR sense (front) and 2 MP webcam (rear) with integrated dual array digital microphone, maximum resolution of 1920 x 1080, IR camera for face authentication with Windows Hello <sup>17</sup>
<b>Environmental</b>	Operating temperature: 10 to 35°C; Operating humidity: 10 to 90% RH
<b>Available Software</b>	Absolute Persistence module; HP Hotkey Support; HP Noise Cancellation Software; HP Support Assistant; Intel® Unite™ with Skype for Business plug-in; Native Miracast Support; HP Wireless Wakeup; Buy Office (sold separately); HP Sure Recover; HP JumpStarts <sup>9,23,25,27,28</sup>
<b>Security management</b>	DriveLock; Hood sensor; HP BIOSphere; HP Client Security Suite Gen 4; HP Password Manager; HP Power On Authentication; HP Sure Run; HP Sure Start Gen 4; Intel® Identity Protection Technology (Intel® IPT); Parallel enable/disable (via BIOS); Power-on password (via BIOS); RAID configurations; Removable media write/boot control; SATA port disablement (via BIOS); Serial enable/disable (via BIOS); Setup password (via BIOS); Trusted Platform Module TPM 2.0 Embedded Security Chip shipped with Windows 10 (Common Criteria EAL4+ Certified)(FIPS 140-2 Level 2 Certified); USB enable/disable (via BIOS) <sup>11,31,32,34,35,36,37,38,40</sup>
<b>Fingerprint reader</b>	Fingerprint reader (select models)
<b>Management features</b>	HP BIOS Config Utility (download); HP Client Catalog (download); HP Cloud Recovery; HP Driver Packs (download); HP Management Integration Kit for Microsoft System Center Configuration Management Gen 2; HP System Software Manager (download); Ivanti Management Suite <sup>10,29,30,42</sup>
<b>Power</b>	180 W internal power supply, up to 90% efficiency, active PFC
<b>Dimensions</b>	53.96 x 18.02 x 46.77 cm (With basic stand.)
<b>Weight</b>	8.73 kg (Lowest weight configuration with adjustable height stand. Weight will vary by configuration.)
<b>Energy efficiency compliance</b>	CECP; ENERGY STAR® certified; EPEAT® 2019 registered where applicable <sup>12</sup>
<b>Environmental specifications</b>	Low halogen <sup>15</sup>

## HP EliteOne 800 G4 23.8-inch Touch All-in-One PC

Accessories and services (not included)

---

### HP Wireless Slim Business Keyboard



Enjoy easy data entry and wireless connectivity with the HP Wireless Business Slim Keyboard, designed to complement the 2015 class of HP Business PCs.

**Product number: N3R88AA**

---

### HP Keyed Cable Lock 10 mm

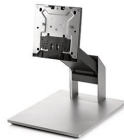


Help keep your notebook safe in the office and high-traffic areas by tethering it to a secure surface with the HP Master Keyed Cable Lock 10mm, designed specifically for ultra-thin profile notebooks.

**Product number: T1A62AA**

---

### HP EliteOne G3 800 AIO Recline Stand



Create a customized workspace for your HP All-in-One with the HP EliteOne 800 G3 AIO Recline Stand, which allows you to recline the system for maximum usability in a range of settings.

**Product number: Z9H67AA**

---

### HP 3-year Next Business Day Onsite Optional Customer Self Repair Desktop/Workstation Only Hardware Service



Receive 3 years of next business day onsite repair from an HP-qualified technician for your computing device, if the issue cannot be solved remotely. For more information on Care Pack services, please visit [www.hp.com/go/cpc](http://www.hp.com/go/cpc).

**Product number: UE379E**

---

## HP EliteOne 800 G4 23.8-inch Touch All-in-One PC

### Messaging Footnotes

- <sup>1</sup> Not all features are available in all editions or versions of Windows. Systems may require upgraded and/or separately purchased hardware, drivers, software or BIOS update to take full advantage of Windows functionality. Windows 10 is automatically updated, which is always enabled. ISP fees may apply and additional requirements may apply over time for updates. See <http://www.windows.com>.
- <sup>2</sup> Multi-Core is designed to improve performance of certain software products. Not all customers or software applications will necessarily benefit from use of this technology. Performance and clock frequency will vary depending on application workload and your hardware and software configurations. Intel's numbering, branding and naming are not a measurement of higher performance.
- <sup>3</sup> Intel® Optane™ memory system acceleration does not replace or increase the DRAM in your system and requires configuration with an optional Intel® Core™ i(5 or 7)+ processor.
- <sup>4</sup> AMD Radeon™ graphics sold separately and must be configured at the factory.
- <sup>5</sup> HP Sure Start Gen4 is available on HP Elite and HP Pro 600 products equipped with 8th generation Intel® or AMD processors.
- <sup>7</sup> HP Manageability Integration Kit can be downloaded from <http://www8.hp.com/us/en/ads/clientmanagement/overview.html>.
- <sup>8</sup> Sold as an optional feature must be configured at the factory.
- <sup>9</sup> HP Sure Run is available on HP Elite products equipped with 8th generation Intel® or AMD processors.
- <sup>10</sup> HP Sure Click is available on most HP PCs and supports Microsoft® Internet Explorer and Chromium™. Supported attachments include Microsoft Office (Word, Excel, PowerPoint) and PDF files in read only mode, when Microsoft Office or Adobe Acrobat are installed.
- <sup>11</sup> HP Sure Recover is available on HP Elite PCs with 8th generation Intel® or AMD processors and requires an open, wired network connection. Not available on platforms with multiple internal storage drives or Intel® Optane™. You must back up important files, data, photos, videos, etc. before using HP Sure Recover to avoid loss of data.
- <sup>12</sup> HP Multi Factor Authenticate Gen2 requires Windows, 7th or 8th generation Intel® Core™ processor, Intel® integrated graphics, and Intel® WLAN. Microsoft System Center Configuration Manager is required for deployment. Three authentication factors require Intel® vPro™.

### Technical Specifications Footnotes

- <sup>1</sup> Not all features are available in all editions or versions of Windows. Systems may require upgraded and/or separately purchased hardware, drivers, software or BIOS update to take full advantage of Windows functionality. Windows 10 is automatically updated, which is always enabled. ISP fees may apply and additional requirements may apply over time for updates. See <http://www.windows.com>.
- <sup>2</sup> Some devices for academic use will automatically be updated to Windows 10 Pro Education with the Windows 10 Anniversary Update. Features vary; see <https://aka.ms/ProEducation> for Windows 10 Pro Education feature information.
- <sup>3</sup> Multi-core is designed to improve performance of certain software products. Not all customers or software applications will necessarily benefit from use of this technology. Performance and clock frequency will vary depending on application workload and your hardware and software configurations. Intel's numbering, branding and/or naming is not a measurement of higher performance.
- <sup>4</sup> For systems configured with more than 3 GB of memory and a 32-bit operating system, all memory may not be available due to system resource requirements. Addressing memory above 4 GB requires a 64-bit operating system. Memory modules support data transfer rates up to 2666 MT/s; actual data rate is determined by the system's configured processor. See processor specifications for supported memory data rate. All memory slots are customer accessible / upgradeable.
- <sup>5</sup> For hard drives and solid state drives, GB = 1 billion bytes. TB = 1 trillion bytes. Actual formatted capacity is less. Up to 36 GB (for Windows 10) of system disk is reserved for the system recovery software.
- <sup>7</sup> Wireless access point and internet service required.
- <sup>8</sup> Antimicrobial USB Mouse and HP USB Hardened Mouse are not available in all regions.
- <sup>9</sup> Miracast is a wireless technology your PC can use to project your screen to TVs, projectors, and streaming.
- <sup>10</sup> HP Driver Packs: Not preinstalled, however available for download at <http://www.hp.com/go/clientmanagement>.
- <sup>11</sup> HP BIOSphere Gen4: Requires Intel® or AMD 8th Gen processors. Features may vary depending on the platform and configurations.
- <sup>12</sup> Based on US EPEAT® registration according to IEEE 1680.1-2018 EPEAT®. Status varies by country. Visit [www.epeat.net](http://www.epeat.net) for more information.
- <sup>13</sup> All memory slots are customer accessible / upgradeable.
- <sup>14</sup> HP USB and PS/2 Washable Keyboard: PS/2 port not available on EliteOne 800 G4 AiOs.
- <sup>15</sup> External power supplies, power cords, cables and peripherals are not Low Halogen. Service parts obtained after purchase may not be Low Halogen.
- <sup>16</sup> HP USB and PS/2 Washable Mouse: PS/2 port not available on EliteOne 800 G4 AiOs.
- <sup>17</sup> Sold separately or as an optional feature.
- <sup>18</sup> All HP devices which carry the Bang & Olufsen brand are custom-tuned with Bang & Olufsen's acoustical engineers for precise sound experience in business use.
- <sup>19</sup> Your product does not support Windows 8 or Windows 7. In accordance with Microsoft's support policy, HP does not support the Windows 8 or Windows 7 operating system on products configured with Intel® 8th generation and forward processors or provide any Windows 8 or Windows 7 drivers on <http://www.support.hp.com>.
- <sup>20</sup> Some functionality of vPro, such as Intel Active Management Technology and Intel Virtualization technology, requires additional 3rd party software in order to run. Availability of future "virtual appliances" applications for Intel vPro technology is dependant on 3rd party software providers. Compatibility with future "virtual appliances" is yet to be determined.
- <sup>21</sup> Intel® Optane™ memory system acceleration does not replace or increase the DRAM in your system and requires configuration with an optional Intel® Core™ i(5 or 7)+ processor.
- <sup>22</sup> Intel® Turbo Boost technology requires a PC with a processor with Intel Turbo Boost capability. Intel Turbo Boost performance varies depending on hardware, software and overall system configuration. See [www.intel.com/technology/turboboost](http://www.intel.com/technology/turboboost) for more information.
- <sup>23</sup> Absolute Persistence Module: Absolute agent is shipped turned off, and will be activated when customers activate a purchased subscription. Subscriptions can be purchased for terms ranging multiple years. Service is limited, check with Absolute for availability outside the U.S. The Absolute Recovery Guarantee is a limited warranty. Certain conditions apply. For full details visit: <http://www.absolute.com/company/legal/agreements/computrace-agreement>. Data Delete is an optional service provided by Absolute Software. If utilized, the Recovery Guarantee is null and void. In order to use the Data Delete service, customers must first sign a Pre-Authorization Agreement and either obtain a PIN or purchase one or more RSA SecurID tokens from Absolute Software.
- <sup>25</sup> HP Support Assistant: Requires Windows and Internet access.
- <sup>27</sup> HP Sure Recover: Is available on HP Elite PCs with 8th generation Intel® or AMD processors and requires an open, wired network connection. Not available on platforms with multiple internal storage drives, Intel® Optane™. You must back up important files, data, photos, videos, etc. before use to avoid loss of data.
- <sup>28</sup> Intel® Unite™ with Skype for Business plug-in: Sold separately or as an optional feature.
- <sup>29</sup> HP Manageability Integration Kit: Can be downloaded from <http://www8.hp.com/us/en/ads/clientmanagement/overview.html>.
- <sup>30</sup> Ivanti Management Suite: Subscription required.
- <sup>31</sup> HP Client Security Suite Gen 4: Requires Windows and Intel® or AMD 8th generation processors.
- <sup>32</sup> HP Password Manager: Requires Internet Explorer or Chrome or Firefox. Some websites and applications may not be supported. User may need to enable or allow the add-on / extension in the internet browser.
- <sup>33</sup> Microsoft Defender: Opt in and internet connection required for updates.
- <sup>34</sup> HP Sure Start Gen4: is available on HP Elite and HP Pro 600 products equipped with 8th generation Intel® or AMD processors.
- <sup>35</sup> Firmware TPM: Is version 2.0. Hardware TPM is v1.2, which is a subset of the TPM 2.0 specification version v0.89 as implemented by Intel Platform Trust Technology (PTT).
- <sup>36</sup> RAID configuration: Is optional and does require a second hard drive.
- <sup>37</sup> HP Sure Run: Is available on HP Elite products equipped with 8th generation Intel® or AMD processors.
- <sup>38</sup> Intel® Identity Protection Technology (Intel® IPT): Models configured with Intel® Core™ processors have the ability to utilize advanced security protection for online transactions. Intel® Identity Protection Technology (Intel® IPT), used in conjunction with participating web sites, provides double identity authentication by adding a hardware component in addition to the usual user name and password. Intel® Identity Protection Technology (Intel® IPT) is initialized through an HP Client Security module.
- <sup>40</sup> HP Drive Lock is not supported on NVMe drives.
- <sup>41</sup> HD-DVD disks cannot be played on this drive. No support for DVD-RAM. Actual speeds may vary. Don't copy copyright-protected materials. Double Layer discs can store more data than single layer discs. Discs burned with this drive may not be compatible with many existing single-layer DVD drives and players.
- <sup>42</sup> HP Cloud Recovery is available for HP Elite and Pro desktops and laptops PCs with Intel® or AMD processors and requires an open, wired network connection. Note: You must back up important files, data, photos, videos, etc. before use to avoid loss of data. Detail please refer to: <https://support.hp.com/us-en/document/c05115630>.

Sign up for updates [hp.com/go/getupdated](http://hp.com/go/getupdated)

© Copyright 2020 HP Development Company, L.P. The information contained herein is subject to change without notice. The only warranties for HP products and services are set forth in the express warranty statements accompanying such products and services. Nothing herein should be construed as constituting an additional warranty. HP shall not be liable for technical or editorial errors or omissions contained herein.

Bluetooth is a trademark of its proprietor and used by HP Inc. under license. Intel, the Intel logo, Pentium, vPro, Intel Core, and Core Inside are trademarks or registered trademarks of Intel Corporation or its subsidiaries in the United States and other countries. USB Type-C® and USB-C® are registered trademarks of USB Implementers Forum. DisplayPort™ and the DisplayPort™ logo are trademarks owned by the Video Electronics Standards Association (VESA®) in the United States and other countries. ENERGY STAR and the ENERGY STAR mark are registered trademarks owned by the U.S. Environmental Protection Agency. All Rights Reserved. All other trademarks are the property of their respective owners.

4AA7-2854EEAP, March 2020

