



HP ProDesk 600 G2 Small Form Factor PC

The HP ProDesk 600 SFF delivers value with a balance of performance and expandability for businesses with commercial-class productivity, reliability, security, and manageability needs.



- Windows 10 Pro¹
- 6th Gen Intel® Core™ Processors²

Perform at the speed of work

- Power through your day with speed and performance. Get the latest in processing technology with your choice of 6th Generation Intel® Core™ processors² and Intel® HD 530 Graphics.

Heavy security, exceptionally managed

- IT efficiency reigns supreme when it's backed by a full portfolio of security solutions, including HP BIOSphere³ and Device Guard⁴ available on Windows 10¹ Enterprise Edition.

Ready to go the distance

- HP ProDesks are rigorously tested to help ensure reliability. During the HP Total Test Process, PCs experience 120,000 hours of performance trials to help get you through your business day.

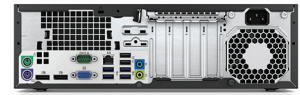
The right balance

- The HP ProDesk 600 Desktop SFF delivers powerful performance, security, and manageability at a value that enables you to keep focused on your businesses.

Featuring

- Help secure the future of your modern business. Modern PCs from HP make the most of Windows 10 Pro¹ to help protect you from today's security threats and maximize management and productivity features for business.
- Help manage the fleet with Intel® Standard Manageability and reduce the burden on IT resources with HP's Common Core BIOS that allows standard manageability across HP Desktops and HP Notebooks.
- Extend your business investments with a long life cycle and platform stability.
- Make conferencing from your PC as simple as the touch of a button with the optional HP Conferencing Keyboard.⁵
- Give yourself room to grow with ease with multiple expansion slots, ports and connectors.
- HP helps you preserve your time and optimize your resources with expert configuration and deployment services that bring you fast, accurate, and globally standardized IT solutions.
- Reduce power consumption and costs with ENERGY STAR® certified and EPEAT® Gold⁶ qualified configurations.
- Help increase productivity by up to 35%⁷ with support for up to three external Pro Displays.⁵

HP ProDesk 600 G2 Small Form Factor PC Specifications Table



Form Factor	Small Form Factor
Available Operating System	Windows 10 Pro 64 ¹ Windows 10 Home 64 ¹ Windows 8.1 Pro 64 ¹ Windows 8.1 64 ¹ Windows 7 Professional 64 (available through downgrade rights from Windows 10 Pro) ² Windows 7 Professional 32 (available through downgrade rights from Windows 10 Pro) ² Windows 7 Professional 64 ¹ Windows 7 Professional 32 ¹ FreeDOS 2.0
Available Processors ³	Intel® Core™ i7-6700 with Intel HD Graphics 530 (3.4 GHz, up to 4 GHz with Intel Turbo Boost, 8 MB cache, 4 cores); Intel® Core™ i5-6600 with Intel HD Graphics 530 (3.3 GHz, up to 3.9 GHz with Intel Turbo Boost, 6 MB cache, 4 cores); Intel® Core™ i5-6500 with Intel HD Graphics 530 (3.2 GHz, up to 3.6 GHz with Intel Turbo Boost, 6 MB cache, 4 cores); Intel® Core™ i3-6320 with Intel HD Graphics 530 (3.9 GHz, 4 MB cache, 2 cores); Intel® Core™ i3-6300 with Intel HD Graphics 530 (3.8 GHz, 4 MB cache, 2 cores); Intel® Core™ i3-6100 with Intel HD Graphics 530 (3.7 GHz, 3 MB cache, 2 cores); Intel® Pentium® G4520 with Intel HD Graphics 530 (3.6 GHz, 3 MB cache, 2 cores); Intel® Pentium® G4500 with Intel HD Graphics 530 (3.5 GHz, 3 MB cache, 2 cores); Intel® Pentium® G4400 with Intel HD Graphics 510 (3.3 GHz, 3 MB cache, 2 cores)
Chipset	Intel® Q150
Maximum Memory	64 GB DDR4-2133 SDRAM Transfer rates up to 2133 MT/s
Memory Slots	4 DIMM
Internal Storage	500 GB up to 2 TB SATA (7200 rpm) ⁴ 500 GB (8 GB cache) up to 1 TB (8 GB cache) SATA SSHD ⁴ 120 GB up to 256 GB SATA SSD ⁴ 128 GB up to 512 GB SATA 3D SSD ⁴ 128 GB up to 512 GB HP Turbo Drive G2 SSD (M.2 PCIe) ⁴ 128 GB 120 GB up to 1 TB SATA SED SSD ⁴
Optical Drive	Slim SATA BDXL Blu-ray writer; Slim SATA SuperMulti DVD writer; Slim SATA DVD-ROM ^{5,6}
Available Graphics	Integrated: Intel® HD Graphics ⁸ Discrete: NVIDIA® GeForce® GT 730 (2 GB); NVIDIA® NVS® 310 (1 GB) (Integrated graphics will depend on processor)
Audio	DTS Sound+™ audio management technology, HD audio with Realtek ALC221 codec (all ports are stereo), microphone and headphone front ports (3.5 mm), line-out and line-in rear ports (3.5 mm), multi-streaming capable and internal speaker.
Expansion Slots	3 low profile PCIe 3.0 x1; 1 low profile PCIe 3.0 x16
Ports and Connectors	Front: 2 USB 3.0; 2 USB 2.0 (1 fast charging); 1 headphone; 1 microphone/headphone; 1 SD 3 card reader (optional) Back: 4 USB 3.0; 2 USB 2.0; 1 serial; 1 serial (optional); 1 parallel (optional); 2 PS/2 (keyboard and mouse); 1 VGA; 2 DisplayPort; 1 audio line in; 1 audio line out; 1 RJ-45
Input Devices	HP Conferencing Keyboard; HP USB and PS/2 Washable Keyboard; HP USB Smart Card (CCID) Keyboard; HP USB Business Slim Keyboard; HP PS/2 Business Slim Keyboard; HP PS/2 Keyboard; HP Wireless Business Slim Keyboard and Mouse ⁹ HP PS/2 Mouse; HP USB Mouse; HP USB 1000 dpi Laser Mouse; HP USB and PS/2 Washable Mouse; HP USB Hardened Mouse ⁹
Communications	LAN: Intel® I219LM Gigabit Network Connection LOM; Intel® I210-T1 PCIe GbE (optional) WLAN: Broadcom BCM943228Z 802.11n Wireless PCIe with Bluetooth® (optional); Broadcom BCM943228Z 802.11n Wireless PCIe (optional); Intel® 7265 802.11ac Wireless PCIe with Bluetooth® (optional); Intel® 7265 802.11ac Wireless PCIe (optional); Intel® 7265 802.11n Wireless PCIe (optional); Intel® 3165 802.11ac Wireless PCIe with Bluetooth® (optional) ⁷
Drive Bays	One slim ODD; One SD 3 card reader (optional); Two 3.5"; One 2.5"
Available Software	HP business PCs are shipped with a variety of software titles including: HP Drive Encryption, HP Client Security Manager, HP Security Manager, Microsoft Security Essentials, CyberLink Power2Go DVD BD, Native Miracast Support, HP ePrint Driver, HP Recovery Manager, Foxit PhantomPDF Express. Please refer to this product's quick spec document for a full list of preinstalled software. ^{10,11,12}
Security Management	Trusted Platform Module SLB9670T1.2FW4.40 (TPM) 1.2 (Common Criteria EAL4+ certified), field upgradeable to 2.0; SATA port disablement (via BIOS); Drive lock; Intel® Identity Protection Technology (IPT); Serial, parallel, USB enable/disable (via BIOS); Optional USB port disable at factory (user configurable via BIOS); Removable media write/boot control; Power-on password (via BIOS); Setup password (via BIOS); Solenoid hood lock; Intrusion sensor; Support for chassis padlock devices; Support for chassis cable lock devices ^{13,14}
Management Features	Intel® Standard Manageability
Power	200 W standard efficiency, active PFC; 200 W, up to 93% efficient, active PFC
Dimensions	338 x 379 x 100 mm (Desktop orientation)
Weight	Starting at 7.6 kg
Environmental	Low halogen ¹⁶
Energy Efficiency Compliance	ENERGY STAR® certified and EPEAT® registered configurations available ¹⁵
Warranty	On-site Limited warranty; Three-year (3-3-3) limited warranty delivers three years of on-site, next business-day service for parts and labor and includes free telephone support 24 x 7. Three-year onsite and labor are not available in all countries. Service offers terms up to 5 years by choosing a Care Pack. To choose the right level of service for your HP product, visit HP Care Pack Central: www.hp.com/go/cpc

HP ProDesk 600 G2 Small Form Factor PC

Recommended Accessories and Services

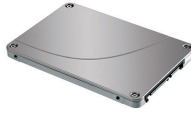
HP Integrated Work Center 3 for Small Form Factor



Maximize your work space with the HP Integrated Work Center for Small Form Factors v3. Customize an “all-in-one” solution by combining an HP Small Form Factor or Workstation with an LED monitor up to 24 diagonal inches.

Product number: F2P06AA

HP 128 GB SED Opal2 Solid State Drive



Get fast boot-up time, file searches, and application starts, and less downtime and power usage with the HP 128 GB SED Opal 2 Solid State Drive.^{1,2}

Product number: G1K24AA

HP Wireless Keyboard and Mouse



The HP Wireless Keyboard and Mouse places advanced functionality and ease of operation at your fingertips. Stop hiding wires and regain a clutter-free work space with a cordless keyboard, cordless laser mouse and USB wireless receiver in a single package – built with the environment in mind.

Product number: QY449AA

HP 3-year Next Business Day Onsite Optional Customer Self Repair Desktop/Workstation Only Hardware Service



Receive 3 years of next business day onsite repair from an HP-qualified technician for your computing device, if the issue cannot be solved remotely. For more information on Care Pack services, please visit www.hp.com/go/cpc.

Product number: UE379E

Messaging Footnotes

- ¹ Not all features are available in all editions or versions of Windows. Systems may require upgraded and/or separately purchased hardware, drivers, software or BIOS update to take full advantage of Windows functionality. Windows 10 is automatically updated, which is always enabled. ISP fees may apply and additional requirements may apply over time for updates. See <http://www.microsoft.com>.
- ² Multi-Core is designed to improve performance of certain software products. Not all customers or software applications will necessarily benefit from use of this technology. 64-bit computing system required. Performance and clock frequency will vary depending on application workload and your hardware and software configurations. Intel's numbering is not a measurement of higher performance.
- ³ HP BIOSphere features may vary depending on the PC platform & configuration.
- ⁴ Windows 10 Enterprise and Device Guard are only available for installation through HP Custom Integration Services to enterprise customers with a volume license to use Windows 10 Enterprise and requires TPM 2.0. Device Guard is not available with Windows 10 Pro.
- ⁵ Sold separately or as an optional feature.
- ⁶ EPEAT® Gold registered where applicable. EPEAT registration varies by country. See www.epeat.net for registration status by country.
- ⁷ "Observed Productivity, Efficiency and User Satisfaction when Using Multiple or Large Displays," Koala LLC Ergonomics Consulting, November 6, 2012.

Technical Specifications Footnotes

- ¹ Not all features are available in all editions or versions of Windows. Systems may require upgraded and/or separately purchased hardware, drivers, software or BIOS update to take full advantage of Windows functionality. Windows 10 is automatically updated, which is always enabled. ISP fees may apply and additional requirements may apply over time for updates. See <http://www.microsoft.com>.
- ² This system is preinstalled with Windows 7 Professional software and also comes with a license and media for Windows 10 Pro software. You may only use one version of the Windows software at a time. Switching between versions will require you to uninstall one version and install the other version. You must back up all data (files, photos, etc.) before uninstalling and installing operating systems to avoid loss of your data.
- ³ Multi-Core is designed to improve performance of certain software products. Not all customers or software applications will necessarily benefit from use of this technology. 64-bit computing system required. Performance will vary depending on your hardware and software configurations. Intel's numbering is not a measurement of higher performance.
- ⁴ For storage drives, GB = 1 billion bytes. TB = 1 trillion bytes. Actual formatted capacity is less. Up to 16 GB (for Windows 7) and up to 36 GB (for Windows 8.1 and 10) of system disk is reserved for system recovery software.
- ⁵ Duplication of copyrighted material is strictly prohibited. Actual speeds may vary. Double Layer media compatibility will widely vary with some home DVD players and DVD-ROM drives. Note that DVD-RAM cannot read or write to 2.6GB Single Sided/5.2 Double Sided-Version 1.0 Media.
- ⁶ With Blu-Ray drive XL, certain disc, digital connection, compatibility and performance issues may arise, and do not constitute defects in the product. Flawless playback on all systems is not guaranteed. In order for some Blu-ray titles to play, they may require an HDCP path and HDCP display. HD-DVD movies cannot be played on this BDXL Drive.
- ⁷ Wireless cards are optional or add-on features and requires separately purchased wireless access point and internet service. Availability of public wireless access points limited. The specifications for the 802.11ac WLAN are draft specifications and are not final. If the final specifications differ from the draft specifications, it may affect the ability of this desktop PC to communicate with other 802.11ac WLAN devices.
- ⁸ HD content required to view HD images.
- ⁹ Optional or add-on feature.
- ¹⁰ HP ePrint requires an Internet connection to HP web-enabled printer and HP ePrint account registration (for a list of eligible printers, supported documents and image types and other HP ePrint details, see www.hp.com/go/businessmobileprinting). HP PageLift requires Windows 7 or higher.
- ¹¹ Microsoft Security Essentials requires Windows 7 and internet access.
- ¹² Miracast is a wireless technology your PC can use to project your screen to TVs, projectors, and streaming media players that also support Miracast. You can use Miracast to share what you're doing on your PC and present a slide show. Miracast is available for Windows 8 and Windows 10. For more information: <http://windows.microsoft.com/en-us/windows-8/project-wireless-screen-miracast>.
- ¹³ Models configured with Intel® Core™ processors have the ability to utilize advanced security protection for online transactions. IPT, used in conjunction with participating web sites, provides double identity authentication by adding a hardware component in addition to the usual user name and password. IPT is initialized through an HP Client Security module.
- ¹⁴ This product ships with TPM 1.2 with option to upgrade to TPM 2.0. Upgrade utility is expected to be available by the end of 2015 via HP Customer Support.
- ¹⁵ EPEAT® registered where applicable. EPEAT registration varies by country. See www.epeat.net for registration status by country.
- ¹⁶ External power supplies, power cords, cables and peripherals are not low halogen. Service parts obtained after purchase may not be low halogen.

Sign up for updates
hp.com/go/getupdated

© Copyright 2015, 2016 HP Development Company, L.P. The information contained herein is subject to change without notice. The only warranties for HP products and services are set forth in the express warranty statements accompanying such products and services. Nothing herein should be construed as constituting an additional warranty. HP shall not be liable for technical or editorial errors or omissions contained herein.

ENERGY STAR and the ENERGY STAR mark are registered trademarks owned by the U.S. Environmental Protection Agency. Bluetooth is a trademark of its proprietor used by HP Inc. under license. Microsoft and Windows are U.S. trademarks of the Microsoft group of companies. Intel and Core are trademarks of Intel Corporation in the U.S. and other countries. Linux® is the registered trademark of Linus Torvalds in the U.S. and other countries. For DTS patents, see <http://patents.dts.com>. Manufactured under license from DTS Licensing Limited. DTS, the Symbol, & DTS and the Symbol together are registered trademarks, and DTS Studio Sound is a trademark of DTS, Inc. © DTS, Inc. All Rights Reserved. All other trademarks are the property of their respective owners.
4AA6-0874EEAP, APJ, July 2016

