



4.3L PARTS MANUAL



17506 Marine Power Industrial Park
Ponchatoula, LA 70454
Parts Direct Line: (504) 386-3571 or (877) 388-9555
Parts Direct Fax: (504) 386-0076

TABLE OF CONTENTS

BASIC ENGINE BLOCK - INTERNAL / LOWER END	1-2
BASIC ENGINE BLOCK - INTERNAL / UPPER END	3-4
FLYWHEEL, STARTER & DRIVE GROUP	5
- FLYWHEELS	
- STARTERS	
- BELLHOUSINGS	
- COUPLERS, DAMPER PLATES	
- DUST COVERS, DRIVE LINE	
LUBRICATION GROUP	6
- OIL PANS	
- DIPSTICK TUBE, DIPSTICK, ETC.	
- OIL FILTERS	
- COOLERS, COOLER BRACKETS	
- OIL LINES & OIL BYPASS	
- DUAL OIL BASE, OIL BASE BRACKETS	
COOLING GROUP	7-14
- HOSES	
- THERMOSTAT HOUSINGS	
- FRESH WATER TANKS, BRACKETS	
- THERMOSTATS, RECOVERY BOTTLE	
- GASKETS, BLOCK-OFF PLATES	
- COOLERS, FRESH WATER TEES	
- WATER PUMPS, BRACKETS, ACCESSORIES	
- LIFT BRACKETS, PULLEYS	
- SEAWATER PUMP & ACCESSORIES	
- RAW WATER & FRESH WATER FLOW DIAGRAMS	
ELECTRICAL GROUP	15-20
- ALTERNATOR, BRACKETS, BELTS	
- DISTRIBUTOR, COIL, ELECTRICAL REPLACEMENT PARTS	
- SENDERS, SWITCHES, RELAYS	
- IGNITION WIRES, WIRE LEADS	
- HARNESES	
- INSTRUMENT PANEL, GAUGES	
- WIRING DIAGRAMS	
EXHAUST GROUP	21
- MERC STYLE MANIFOLD, RISER, GASKETS	

TABLE OF CONTENTS
(Continued)

CARBURETION	22-24
<ul style="list-style-type: none"> - FUEL PUMPS, BRACKETS, FUEL/WATER SEPARATOR - HOLLEY CARBURETORS, FUEL LINES - INTAKE MANIFOLDS - GASKETS, BRACKETS - FLAME ARRESTORS, WEATHER COVER - CONTROL CABLE CLIPS, MISCELLANEOUS - ELECTRIC FUEL PUMP KIT 	
EFI - THROTTLE BODY INJECTION	25-31
<ul style="list-style-type: none"> - THROTTLE BODY DIAGRAM, INTAKE MANIFOLD - FUEL LINES - GASKETS - BRACKETS - HARNESSES - FUEL PUMPS - SENSORS, SENDERS, ECM MODULES - FLAME ARRESTORS, WEATHER COVERS, FITTINGS, ETC. 	
POWER STEERING GROUP	32-33
<ul style="list-style-type: none"> - PUMPS & ACCESSORIES - POWER STEERING DIAGRAM 	
MOUNTING GROUP.....	34
<ul style="list-style-type: none"> - ENGINE MOUNTS - GEAR MOUNTS - ISOLATOR MOUNT, TRUNION PINS 	
TRANSMISSIONS	35-36
<ul style="list-style-type: none"> - VELVET DRIVE & HURTH TRANSMISSIONS - GEAR LINES, COOLERS, SHIFT BRACKETS 	
CATALOG ALPHABETICAL INDEX	37-45
CATALOG NUMERICAL INDEX	46-55

MARINE POWER PARTS DEPARTMENT	Direct Phone 504 - 386 - 3571 or 877 - 388 - 9555 Direct Fax 504 - 386 - 0076
----------------------------------	--

HOW TO USE THIS BOOK

This 4.3L Vortec Parts Book has been designed to assist our distributors, dealers and customers in locating the correct replacement part for their Marine Power engine. This manual is sorted in specific groups for easy reference. Please refer to the Table of Contents, Alphabetical or Numerical Index to locate a particular Marine Power part.

This manual also contains many commonly used parts for the 262 CID Pre-Vortec engine. Most parts fit both the 4.3L Vortec and the 262 CID engine.

As a reference, Marine Power utilizes 4.3V when referring to the Vortec engine and 262 when referring to the Pre-Vortec engine.

If the part you are looking for is not listed, please contact your nearest Marine Power distributor or dealer for further assistance.

Thank you for purchasing Marine Power products.

Happy Boating!

<i>Marine Power Engine Descriptions:</i>	Base	Base Engine or Long Block
	ParPac	Partial Package - Base Engine with Additional Equipment
	SportPac	Complete Inboard Engine
	EnPac	Complete Inboard/Outboard Engine
	JetPac	Complete Inboard Jet Engine

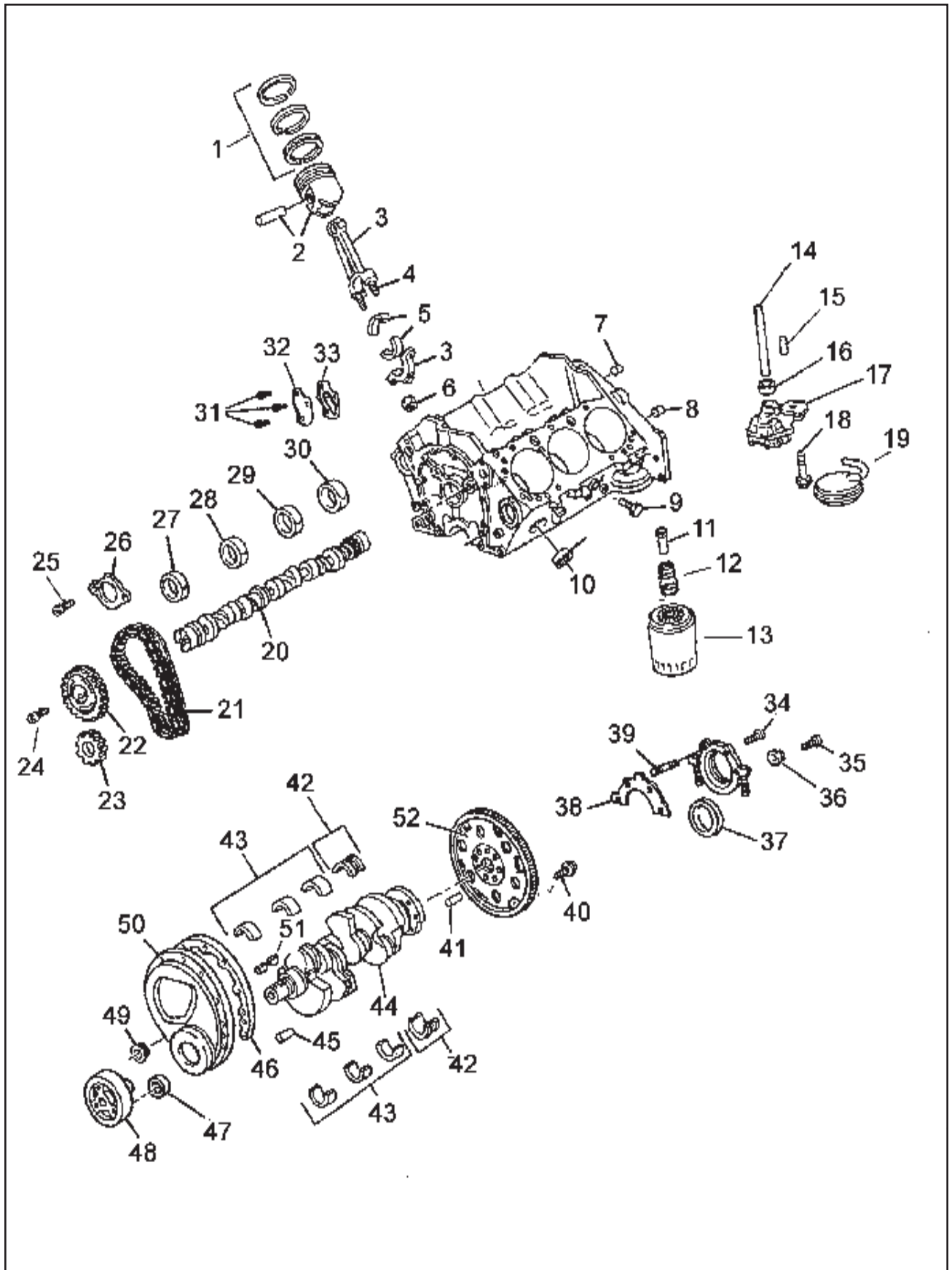
///MARINEPOWER™
The Force Behind The Fun.™



Marine Power INTERNAL GROUP - LOWER END

4.3 VORTEC / 262 CID

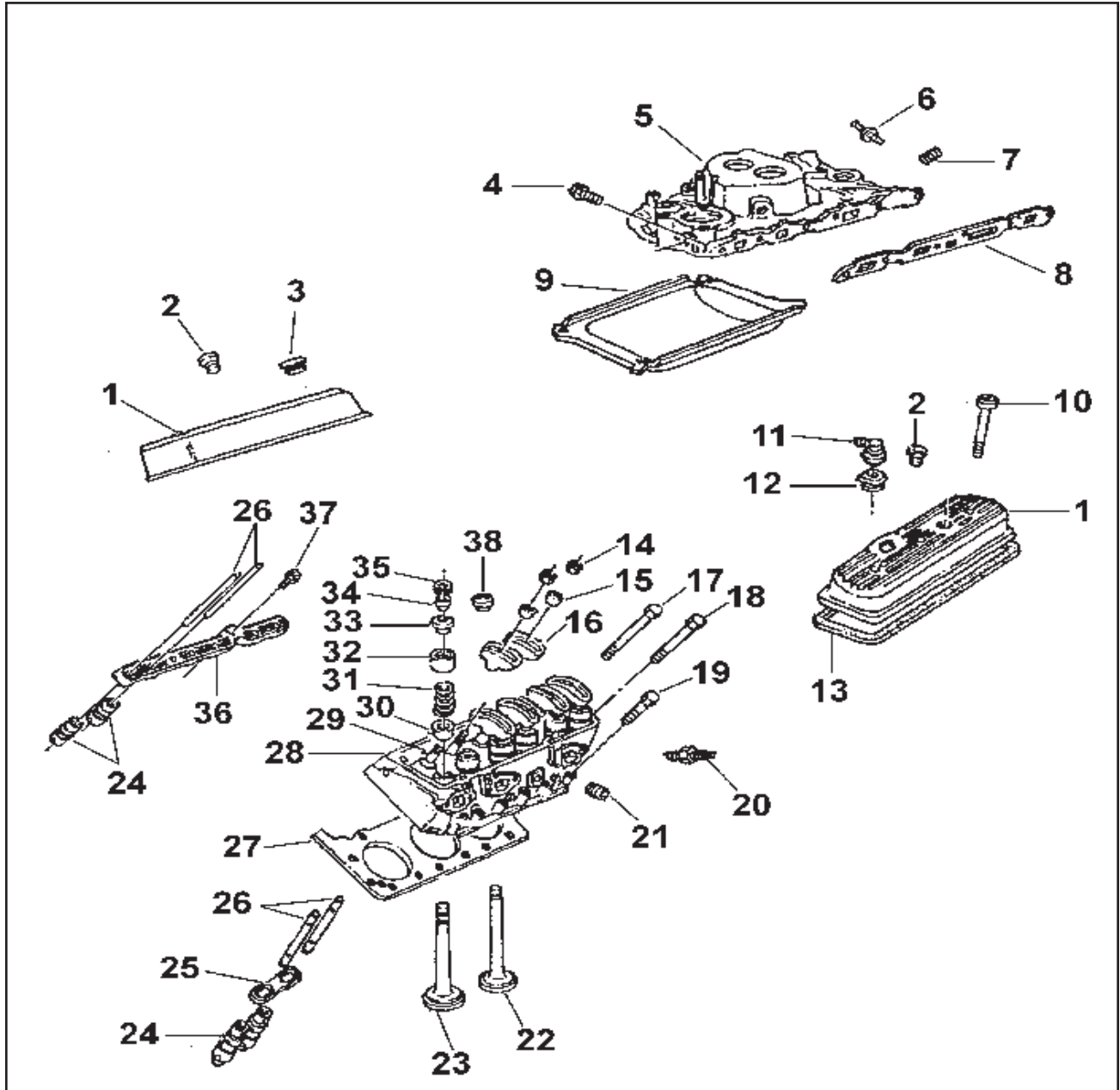
PART #	DESCRIPTION	PART #	DESCRIPTION
0009-038	RING SET: PISTON 262	0017-092	BEARING: CAMSHAFT #3 SB
0009-349	RING SET: PISTON 4.3V >96	0017-090	BEARING: CAMSHAFT #1, #4 SB
0020-037	PISTON: 262 W/PIN 85-92	0007-958	BOLT: FUEL PUMP OPENING COVER SB
0009-037LK	PISTON: 4.3V LC/LK	0309-021	COVER: FUEL PUMP OPENING
0009-036	CONNECTING ROD: V6	0309-020	GASKET: FUEL PUMP OPENING COVER
0009-066	BOLT: CONNECTING ROD V6	0007-961	BOLT: CR/SHF RR OIL SEAL HSG SB
0009-038	BEARING KIT: CONNECTING ROD V6	0009-961	BOLT: CR/SHF RR OIL SEAL HSG SB
0060-067	NUT: CONNECTING ROD V6/BB	0007-962	NUT: CR/SHF RR OIL SEAL RETAINER
0009-830	PLUG: ENGINE BLOCK OIL V6	0009-033	SEAL: CR/SHF REAR OIL 262 PRE-V
0025-910	PIN: CR/SHFT RR OIL SEAL HSG V6	0043-033	SEAL: CR/SHF REAR OIL 4.3 VORTEC
0009-830	PLUG: ENGINE BLOCK OIL V6	0025-610	GASKET: CR/SHF RR OIL SEAL 181/V6
0053-210F8	PLUG: WATER JACKET FREEZE V6/SB	0009-301	STUD: CR/SHF RR OIL SEAL RET 262
0065-843	VALVE: OIL FILTER BYPASS V6/6.5	0043-301	STUD: CR/SHF RR OIL SEAL RET 4.3V
0009-043	FITTING: OIL FILTER	0007-160	BOLT: FLYWHEEL SB
0905-001	FILTER: OIL ENPAC V6	0025-143F5	PIN: FLYWHEEL LOC 181/V6
0007-258	SHAFT: OIL PUMP DRIVE SB	0009-009	BEARING: CR/SHF REAR #4 262 PRE-V



Marine Power INTERNAL GROUP - UPPER END

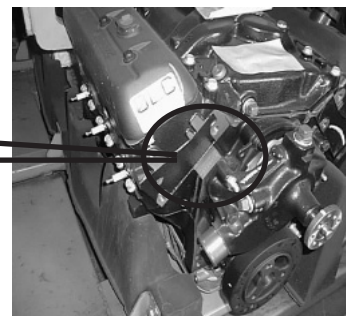
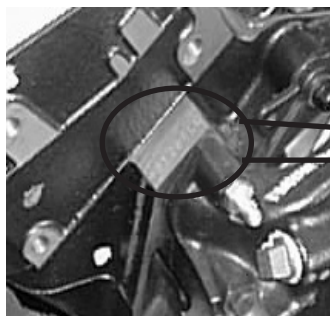
4.3 VORTEC / 262 CID

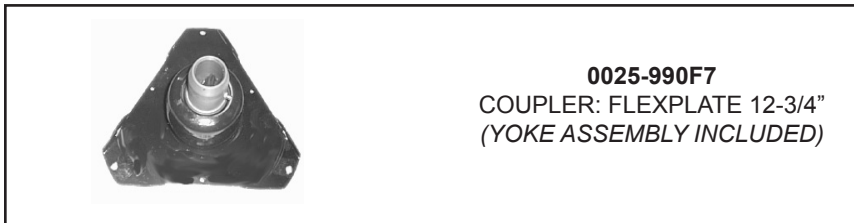
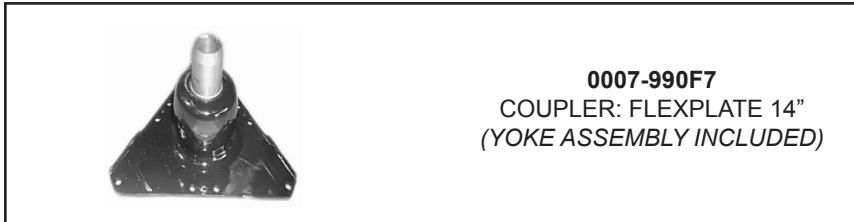
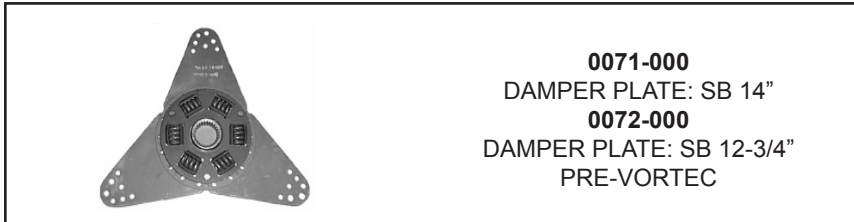
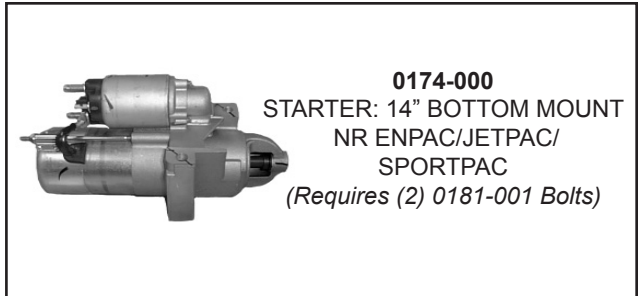
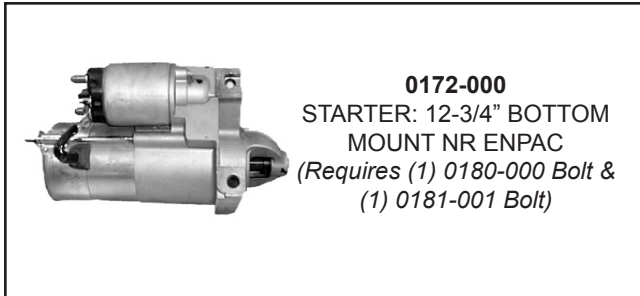
PART #	DESCRIPTION	PART #	DESCRIPTION
0009-100	VALVE COVER: 262 W/ OIL FILL	0007-028	BOLT: CYLINDER HEAD MED V6
0009-100RH	VALVE COVER: 262 W/O OIL FILL	0007-029	BOLT: CYLINDER HEAD SHORT V6
0009-194LC	VALVE COVER: 4.3V W/ OIL FILL	0003-015	SPARK PLUG: V6/350STD/BB
0009-195LC	VALVE COVER: 4.3V W/O OIL FILL	0009-862	PLUG: ENGINE
0307-006	GROMMET: VALVE COVER	0009-175	VALVE: EXHAUST 262 PRE-V
0009-102	OIL CAP: 262 PRE-VORTEC	0017-175	VALVE: EXHAUST 4.3V/5.7V
0043-102	OIL CAP: 4.3V / 6.5	0009-174	VALVE: INTAKE 262 PRE-V
0009-286	BOLT: INTAKE MANIFOLD 262 PRE-V	0017-174	VALVE: INTAKE 4.3V/5.7V
0730-957	BOLT: INTAKE MANIFOLD 4.3V	0009-097	LIFTER: VALVE 262 91-95 (SET OF 8)
0009-249	MANIFOLD: INTAKE 262 PRE-V 2BBL	0043-097	LIFTER: VALVE 4.3V (SET OF 8)
0009-275	MANIFOLD: INTAKE 262 PRE-V 4BBL	0009-098	GUIDE: VALVE LIFTER
0009-275LK	MANIFOLD: INTAKE 4.3 VORTEC 4BBL	0009-127	ROD: VALVE PUSH <95



NOTE: Engine Serial Number or GM Engine Block Number require to assure correct parts.

To locate engine block number:





ENGINE MOUNTS



GEAR MOUNTS



**NOTE: THE GEAR MOUNTS LISTED ARE MOUNTS CURRENTLY IN USE.
PLEASE CALL FOR PRICING AND AVAILABILITY ON PREVIOUSLY USED MOUNTS.**

MISCELLANEOUS



///MARINEPOWER™
The Force Behind The Fun.™


EXHAUST MANIFOLD GROUP



0992-400
RISER: MERC 4" IRON



0992-310N4
GASKET: RISER
MERC SB/BB RW



0501-001N4
GASKET: BLOCK-OFF
SB/BB FW



0996-000
MANIFOLD: EXHAUST
4.3V / 262



0992-635
SPACER: RISER
MERC 3"



0992-660
SPACER: RISER
MERC 6"

MOUNTING HARDWARE			
*BS00-620	BOLT: 3/8" x 1-1/4" SS	0000-800H7	FITTING: BRASS STRAIGHT 3/4"
*B000-676	BOLT: 3/8" x 4-3/8"	0000-815H7	FITTING: BRASS 90D 3/4"
*W0L0-006	WASHER: LOCK 3/8" STEEL	0000-888	PLUG: 3/4" STEEL




CARBURETOR - GASKETS - FUEL LINES




0701-000J10
CARBURETOR: HOLLEY 4160 V6

0701-120J10
KIT: CARB REBUILD
HOLLEY V6



0705-004
GASKET: CARB
HOLLEY 1/8"



0700-002
GASKET: CARB
QUADRAJET



0703-262
ADAPTER PLATE: CARB V6 HOLLEY



0702-284F11
WEDGE PLATE: HOLLEY




0430-008N9
FUEL LINE: PUMP TO
CARB 4160 V6/5.7V



0430-009N10
FUEL LINE: PUMP TO
CARB 4160 4.3V



0430-004
FUEL LINE: SEPARATOR TO FUEL PUMP



0303-016F1
PUMP: FUEL ELECTRIC 7.5PSI
0303-018F4
KIT: MOUNTING ELEC FUEL
PUMP

BRACKETS



0730-282N2
BRACKET: FUEL/WATER
SEPARATOR ALL MODELS



0730-278N2
BRACKET: FUEL PUMP
LOW PRESSURE



1190-001N11
BRACKET: THROTTLE 4.3V

MISCELLANEOUS



0950-102
COVER: WEATHER 4.3V/5.7V
*S000-463
STUD: WEATHER COVER WITH WING NUT



0951-200G2
FLAME ARRESTOR: CARB 181/V6/5.7




0952-002N6
FLAME ARRESTOR: CARB NW JET 2-1/2" TALL

INTAKE MANIFOLDS & GASKET




0009-249
MANIFOLD: INTAKE 262 PRE-VORTEC 2 BARREL



0009-275
MANIFOLD: INTAKE 262 PRE-VORTEC 4 BARREL



0009-275LK
MANIFOLD: INTAKE 4.3 VORTEC 4 BARREL



0009-281
GASKET: INTAKE MANIFOLD 262 / 4.3 VORTEC

ELECTRIC FUEL PUMP KIT

0430-014
KIT: ELECTRIC FUEL PUMP HOLLEY 4160 4.3V
Designed to fit Holley V6 Carburetor 4160 Model
Includes: Electric Fuel Pump, Fuel Pump Mounting Kit, Brackets, Fuel/Water Separator Base & Filter, Fuel Lines, Fittings, Bolts, Etc.

CARBURETION - MISCELLANEOUS



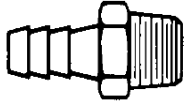
0432-048
BASE: FUEL/WATER
SEPARATOR FILTER



0432-049
FILTER: FUEL/WATER
SEPARATOR



1450-100
HOSE: VENT TUBE



0000-887
FITTING: VENT TUBE



0000-00108
CLIP: CONTROL
CABLE SINGLE



0000-001
CLAMP: CONTROL
CABLE CLIP



0000-002
CLIP: CONTROL
CABLE DUAL



0000-003
PIN: CONTROL
CABLE EYE



0000-004
EYE: CONTROL
CABLE



0000-006
BALL JOINT: CON-
TROL CABLE



0701-003N2
VALVE: PCV HOLLEY
CARB SB



0730-006
GROMMET: VALVE
COVER V6


OIL PANS - GASKETS - DIPSTICKS & TUBES



0009-240
OIL PAN: 262 STEEL
PRE-VORTEC




0009-241
OIL PAN: 4.3V ALUM




0009-245
GASKET: OIL PAN
262 STEEL



0009-246
GASKET: OIL PAN
4.3 VORTEC



0009-001N5
DIPSTICK: 4.3V >5/99
(28-3/4")
0017-001P3
DIPSTICK: 4.3V >8/00



0009-002N5
TUBE: DIPSTICK 4.3V >5/99
0043-002P3
TUBE: DIPSTICK 4.3V > 8/00

BRACKETS



1440-001
BRACKET: GEAR COOLER TWIST




0791-006
BRACKET: OIL COOLER 6"




0901-262
BRACKET: DUAL OIL V6

OIL LINES



1256-003E3
OIL LINE: 19.5" 90-90
1250-002E3
OIL LINE: 28" 90-90
1256-051F8
OIL LINE: 51" 90-90



1460-001
OIL DRAIN: EZ METRIC
THREAD
1460-000
OIL DRAIN: EZ
STANDARD THREAD


MISCELLANEOUS




0904-000
FILTER: OIL
SPORTPAC
0905-001
FILTER: OIL ENPAC
262/4.3V



0900-100
BASE: DUAL OIL
0000-871
FITTING: REMOTE OIL
SYSTEM (2 REQ)



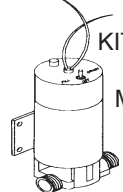
0440-001
COOLER: OIL



0440-549G3
COOLER: OIL DUAL
5" X 9"



0791-000
CLAMP: OIL
COOLER

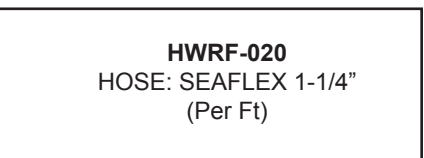
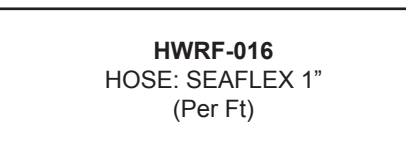


0900-400
KIT: OIL EXCHANGE
(Includes Pump,
Mounting Bracket,
EZ Oil Drain)



0521-000
BYPASS KIT: OIL V6
0521-001
COVER: OIL BYPASS ADAPT-
ER V6
0521-002
O-RING: ADAPTER COVER V6

COOLING: HOSES



HOUSINGS

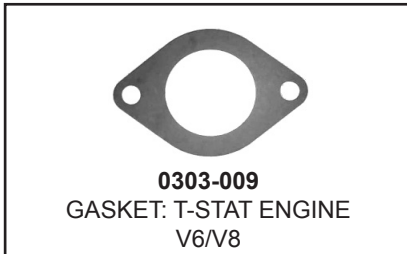
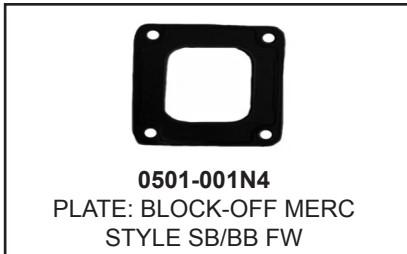


FW BYPASS

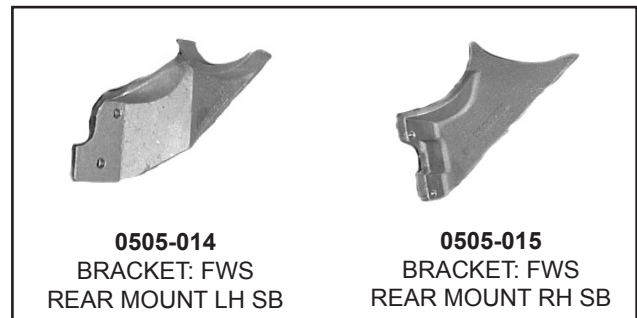
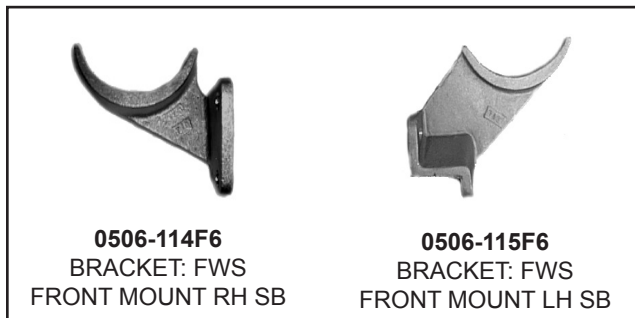
0506-006N5
KIT: FW BYPASS SB

1. 0720-852 FITTING: 3/8" X 1/4"
2. 0720-851 FITTING: 3/8" 90°
3. 0000-847 BUSHING: 3/4" X 1/4" (4.3/5.7)
- 0000-855 BUSHING: 1/2" X 1/4" (7.4/8.2)
4. HC00-008 CLAMP: HOSE #8
5. HPWS-006 HOSE: 3/8"
6. 0730-882 BUSHING: 3/8" X 1/4"
(IF NECESSARY)

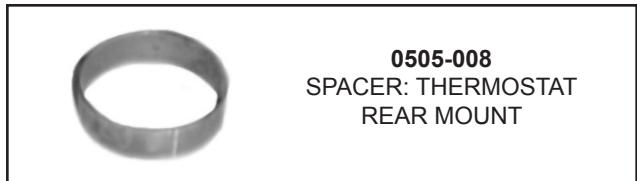
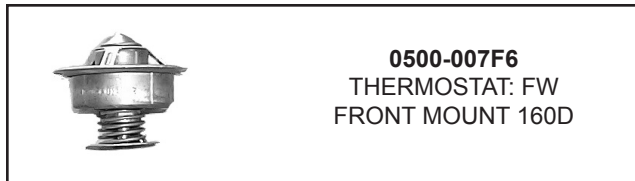
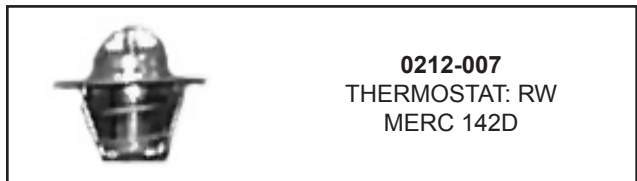
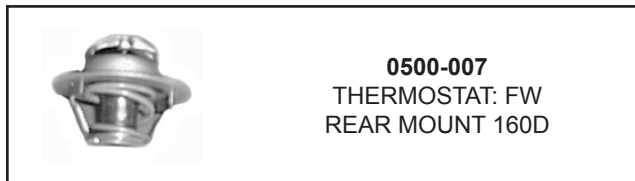
COOLING: GASKETS, BLOCK-OFF PLATE




TANKS & BRACKETS



THERMOSTATS



RECOVERY BOTTLE & MOUNTING BRACKET



0509-101F4
BOTTLE: RECOVERY WITH HOLDING BASKET




0509-102
BRACKET: RECOVERY BOTTLE MOUNTING


COOLERS, FW TEES, INLET TUBE



0441-103
TUBE: COPPER INLET RW NORTHWEST JET



0440-549G3
COOLER: DUAL 5" X 9"



0440-001
COOLER: ENGINE 5" X 1-1/4"



0000-850
TEE: FRESH WATER RM



0000-852
TEE: HEATER ADAPTER 5/8" 90D


WATER PUMPS & ACCESSORIES



0017-071
PUMP: CIRC WATER SB



0307-050
GASKET: CIRC PUMP (REQUIRES 2)



0573-000
BRACKET: SEAWATER PUMP SB
0572-001
BUSHING: SEAWATER PUMP



0566-000P8
PUMP: SEAWATER SB/BB

JABSCO PUMP REPLACEMENT PARTS



0566-001P8
IMPELLER: JABSCO SEAWATER PUMP




0566-002P8
GASKET: JABSCO SEAWATER PUMP



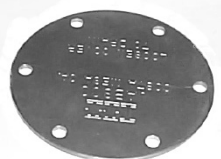
0566-006P8
SEAL: SPACER JABSCO



0566-004P8
CAM: FULL JABSCO SEAWATER PUMP
0566-005P8
SCREW: JABSCO CAM

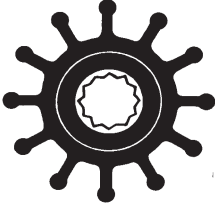


0566-008P8
LIPSEAL: JABSCO SEAWATER PUMP

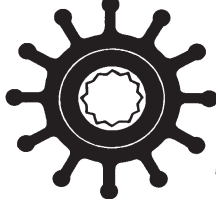


0566-003P8
COVER: JABSCO SEAWATER PUMP
0566-011P8
SCREW: JABSCO SEAWATER PUMP COVER (5 Required)


JOHNSON PUMP REPLACEMENT PARTS



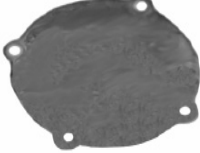
0563-001
 IMPELLER: JOHNSON
 SEAWATER PUMP F5B



0562-001
 IMPELLER: JOHNSON
 SEAWATER PUMP F6B



0562-002
 GASKET: JOHNSON
 SEAWATER PUMP F5B/F6B



0563-003
 COVER: JOHNSON
 SEAWATER PUMP F5B/F6B




0563-008
 LIPSEAL: JOHNSON
 SEAWATER PUMP F5B/F6B




0563-009
 BEARING: JOHNSON
 SEAWATER PUMP F5B/F6B



0563-013
 WASHER: JOHNSON
 SEAWATER PUMP F5B/F6B



0563-002
 CAM: JOHNSON
 SEAWATER PUMP F5B
0562-003
 CAM: JOHNSON
 SEAWATER PUMP F6B



0563-011
 SCREW: JOHNSON
 SEAWATER PUMP COVER
 F5B/F6B
0563-012
 SCREW: JOHNSON
 SEAWATER PUMP CAM F5B/F6B

0563-020
 IMPELLER KIT: JOHNSON F5B
 KIT INCLUDES:
 (1) 0563-001 IMPELLER
 (1) 0562-002 GASKET
 (1) 0563-013 WASHER
 (1) 0563-010 O-RING
 (1) 0563-009 BEARING
 (1) 0563-008 LIPSEAL
 (1) 0563-012 SCREW
 (4) 0563-011 SCREW

0562-020
 IMPELLER KIT: JOHNSON F6B
 KIT INCLUDES:
 (1) 0562-001 IMPELLER
 (1) 0562-002 GASKET
 (1) 0563-013 WASHER
 (1) 0563-010 O-RING
 (1) 0563-009 BEARING
 (1) 0563-008 LIPSEAL
 (1) 0563-012 SCREW
 (4) 0563-011 SCREW

NOTE:
 JOHNSON SEAWATER
 PUMPS ARE NO LONGER
 IN SERVICE ON MARINE
 POWER ENGINES.
 REPLACEMENT PARTS
 ARE STILL AVAILABLE.

PULLEYS



0307-007
 PULLEY: CIRC PUMP
 2-GROOVE 181/SB/BB



0307-028
 PULLEY: CRANKSHAFT
 2-GROOVE 350 / 5.7V

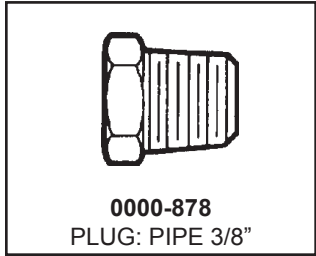
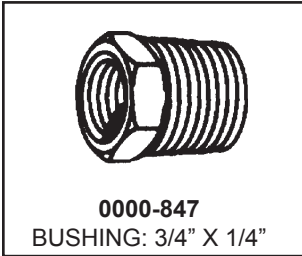
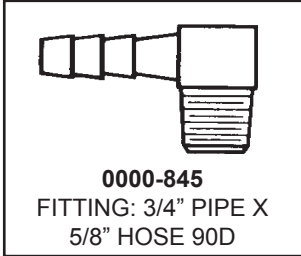
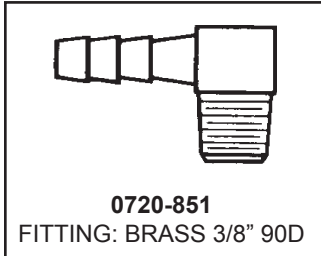
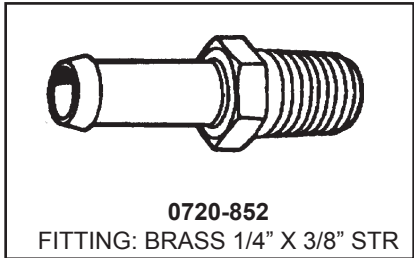
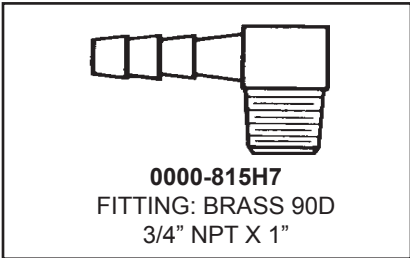


0307-038
 PULLEY: CRANKSHAFT
 3-GROOVE 350 / 5.7V

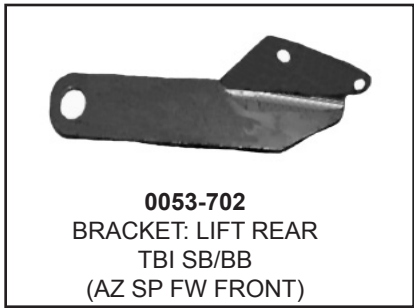


1210-002
 PULLEY: DUAL
 ALTERNATOR
 (FOR PRESTOLITE
 & LEECE-NEVILLE)

FITTINGS - BUSHINGS - PLUGS

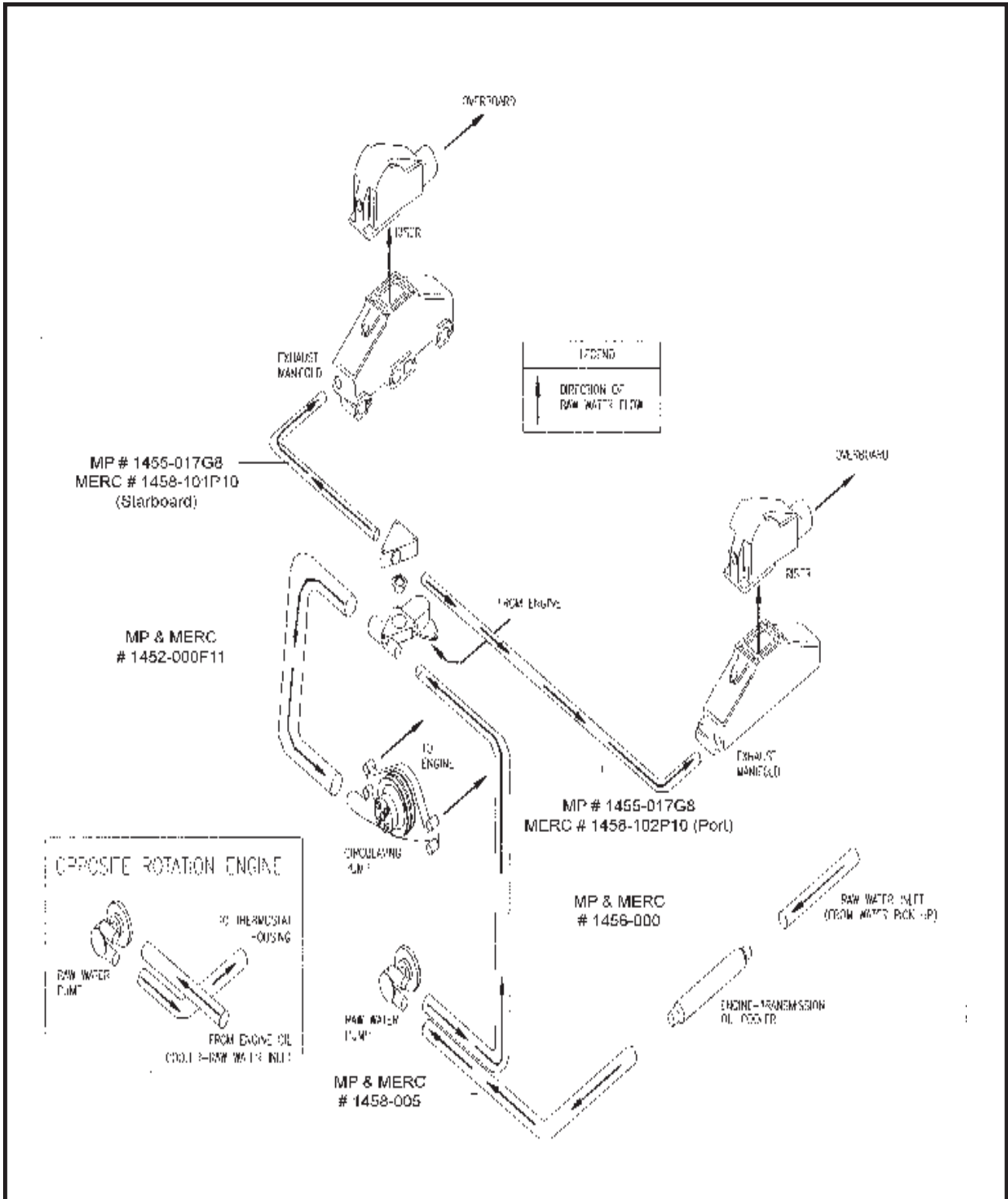


LIFT BRACKETS



///MARINEPOWER™
The Force Behind The Fun.™

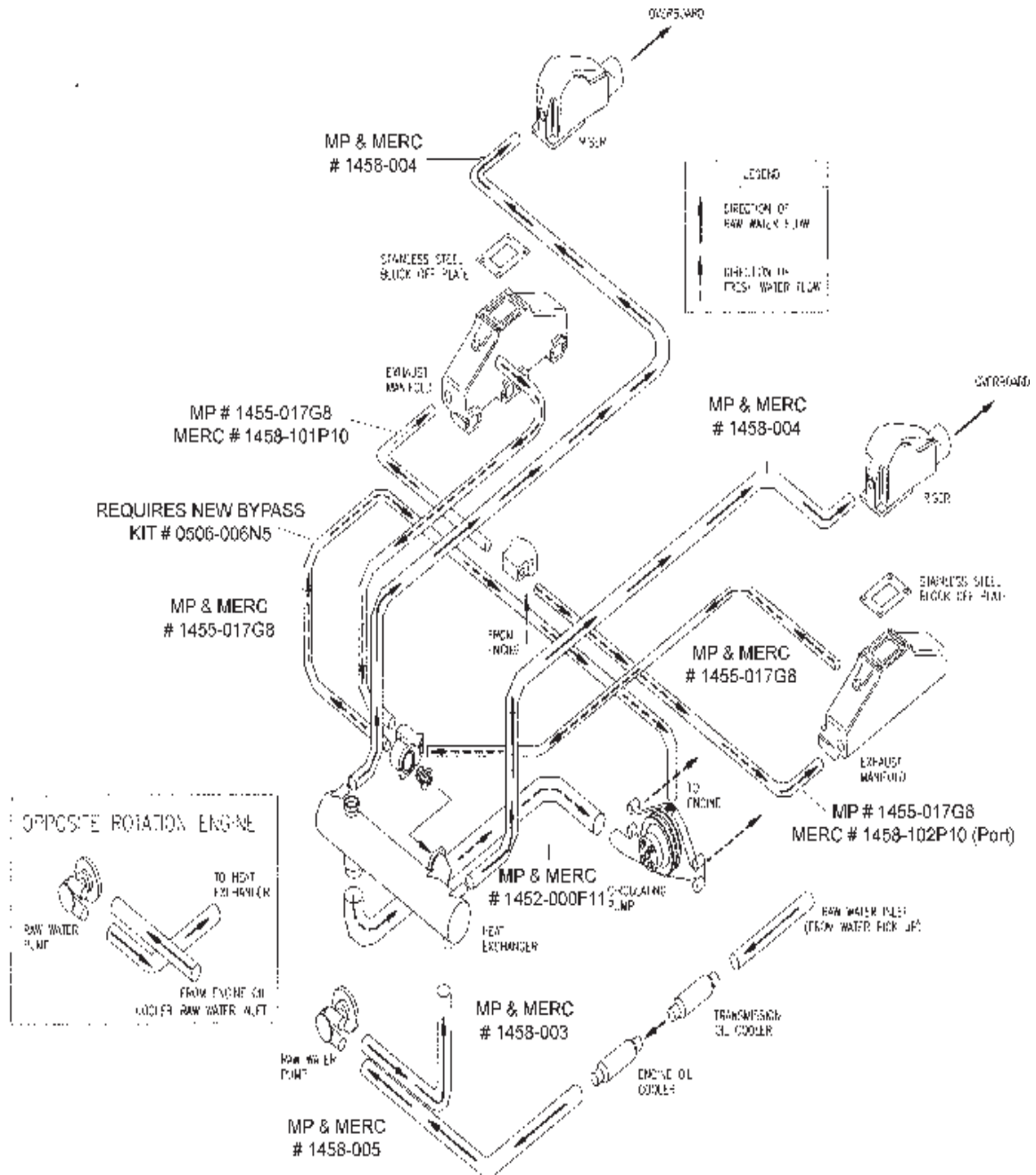
RAW WATER COOLING DIAGRAM



**HOSE NUMBERS LISTED ARE FOR MARINE POWER ENGINES EQUIPPED WITH MARINE POWER OR MERC STYLE MANIFOLDS
USE MERC REFERENCE # FOR 262 / 4.3 VORTEC ENGINES**

FRESH WATER COOLING DIAGRAM

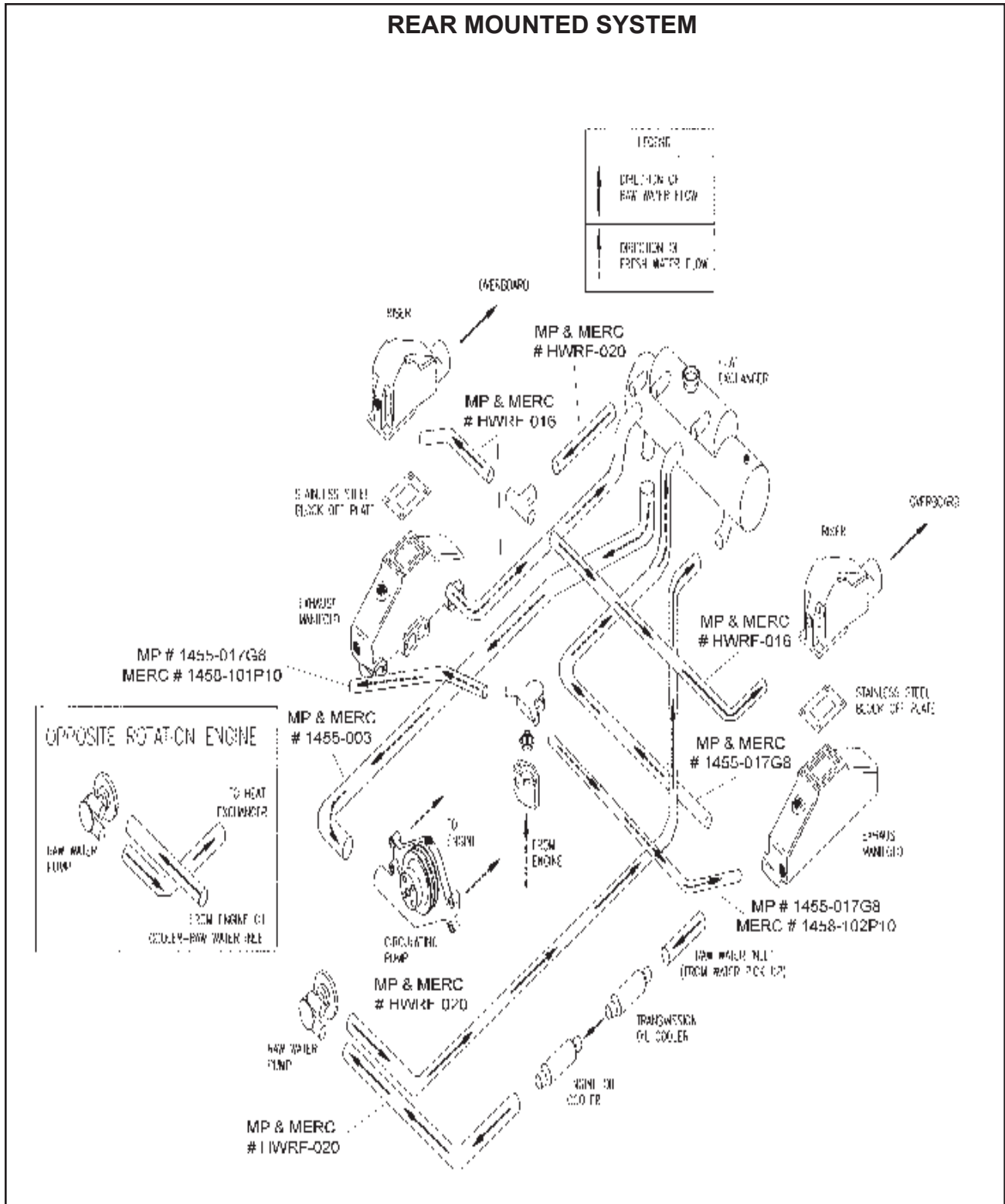
FRONT MOUNTED SYSTEM



**HOSE NUMBERS LISTED ARE FOR MARINE POWER ENGINES EQUIPPED WITH MARINE POWER OR MERC STYLE MANIFOLDS
USE MERC REFERENCE # FOR 262 / 4.3 VORTEC ENGINES**

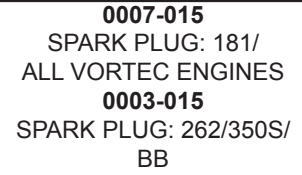
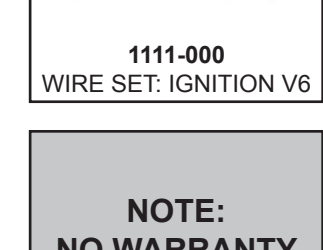
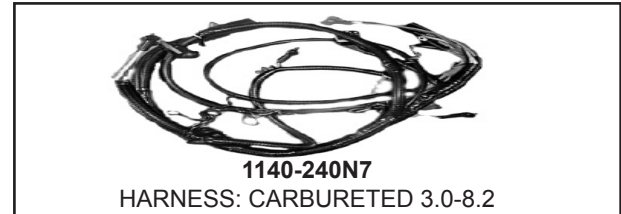
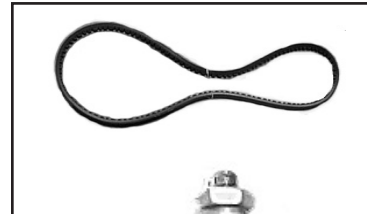
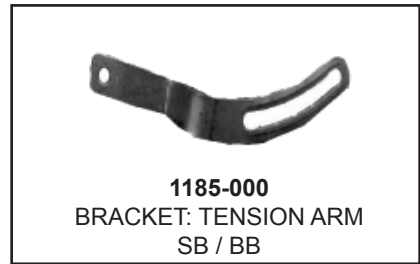
FRESH WATER COOLING DIAGRAM

REAR MOUNTED SYSTEM



**HOSE NUMBERS LISTED ARE FOR MARINE POWER ENGINES EQUIPPED WITH
MARINE POWER OR MERC STYLE MANIFOLDS
USE MERC REFERENCE # FOR 262 / 4.3 VORTEC ENGINES**


ELECTRICAL




SENDERS - SWITCHES - RELAYS



0940-002
SENDER: OIL SINGLE
0940-102
SENDER: OIL DUAL




0940-001
SENDER: WATER SINGLE 1/2"
0940-011
SENDER: WATER SINGLE 3/8"



0940-111
SENDER: WATER DUAL 3/8"




1140-102F5
RELAY: HARNESS
40 AMP



1140-004
CIRCUIT BREAKER:
IGNITION



6754-850N4
RELAY: ELEC
FUEL PUMP



0940-201
SWITCH: WATER
TEMP 3/8"



1140-011N4
RELAY: STARTER
70 AMP
(>April 99)



1140-006
RELAY: STARTER OLD
STYLE
(< March 99)



0940-202
SWITCH: OIL
PRESS 1/8" 7PSI



0303-017F3
SWITCH: HOBBS
OIL /FUEL PUMP
CUT-OFF

HARNESSES - INSTRUMENT PANEL



1140-240N7
HARNESS: CARBURETED
3.0 - 8.2L



0947-003 HARNESS: 3 FT EXTENSION
0947-010 HARNESS: 10 FT EXTENSION
0947-016 HARNESS: 16 FT EXTENSION
0947-025 HARNESS: 25 FT EXTENSION
0947-035 HARNESS: 35 FT EXTENSION

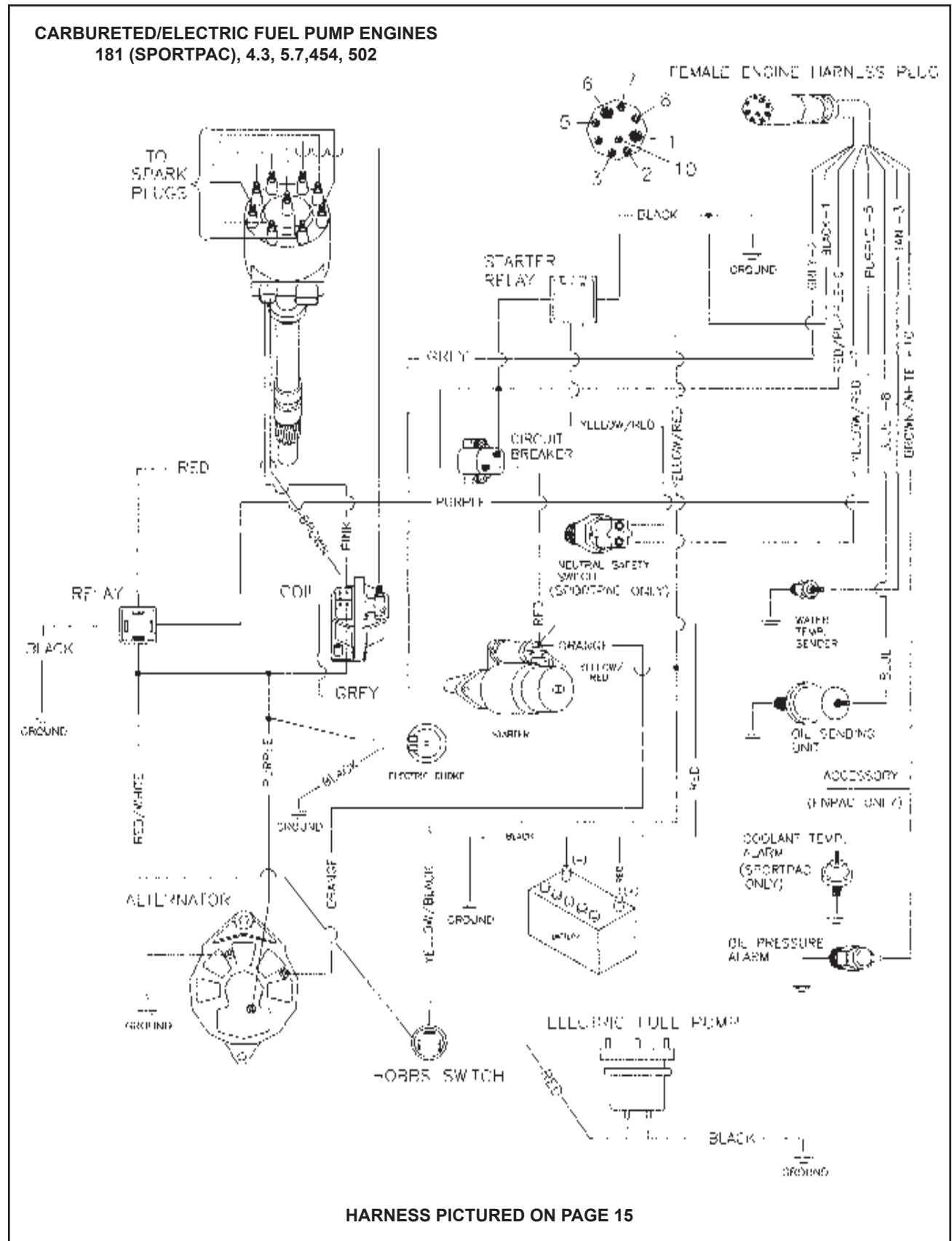


- 0945-000**
PANEL: INSTRUMENT WITH GAUGES
- 0945-002 ***
GAUGE: WATER TEMP
- 0945-003 ***
GAUGE: VOLTMETER
- 0945-004 ***
GAUGE: TACHOMETER GAS
- 0945-005 ***
GAUGE: OIL PRESSURE
- 0945-015**
GAUGE: FUEL
- 0945-476**
GAUGE: HOUR METER

* Gauge Included With Panel

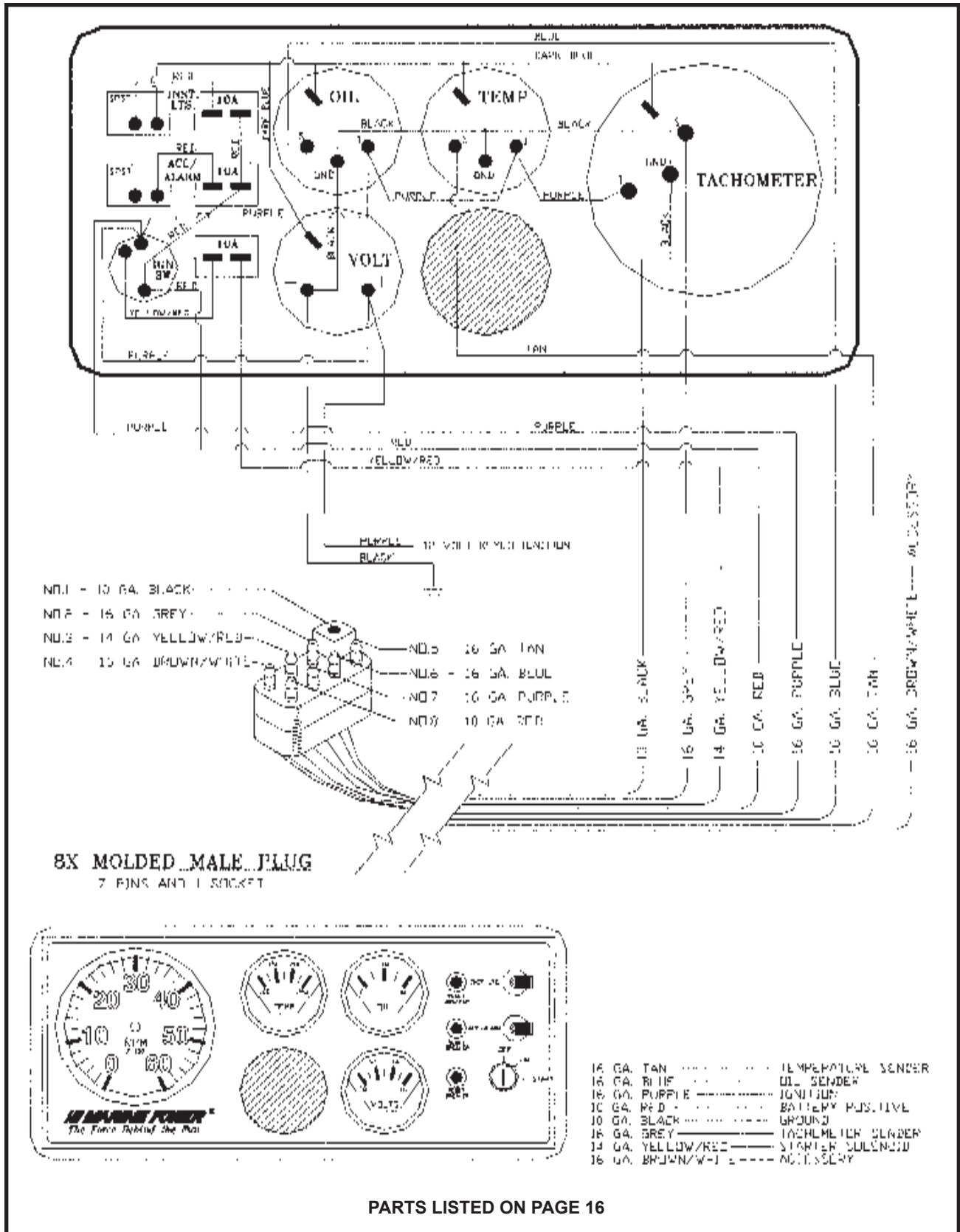
PRIMARY ENGINE HARNESS DIAGRAM

CARBURETED/ELECTRIC FUEL PUMP ENGINES
 181 (SPORTPAC), 4.3, 5.7, 454, 502

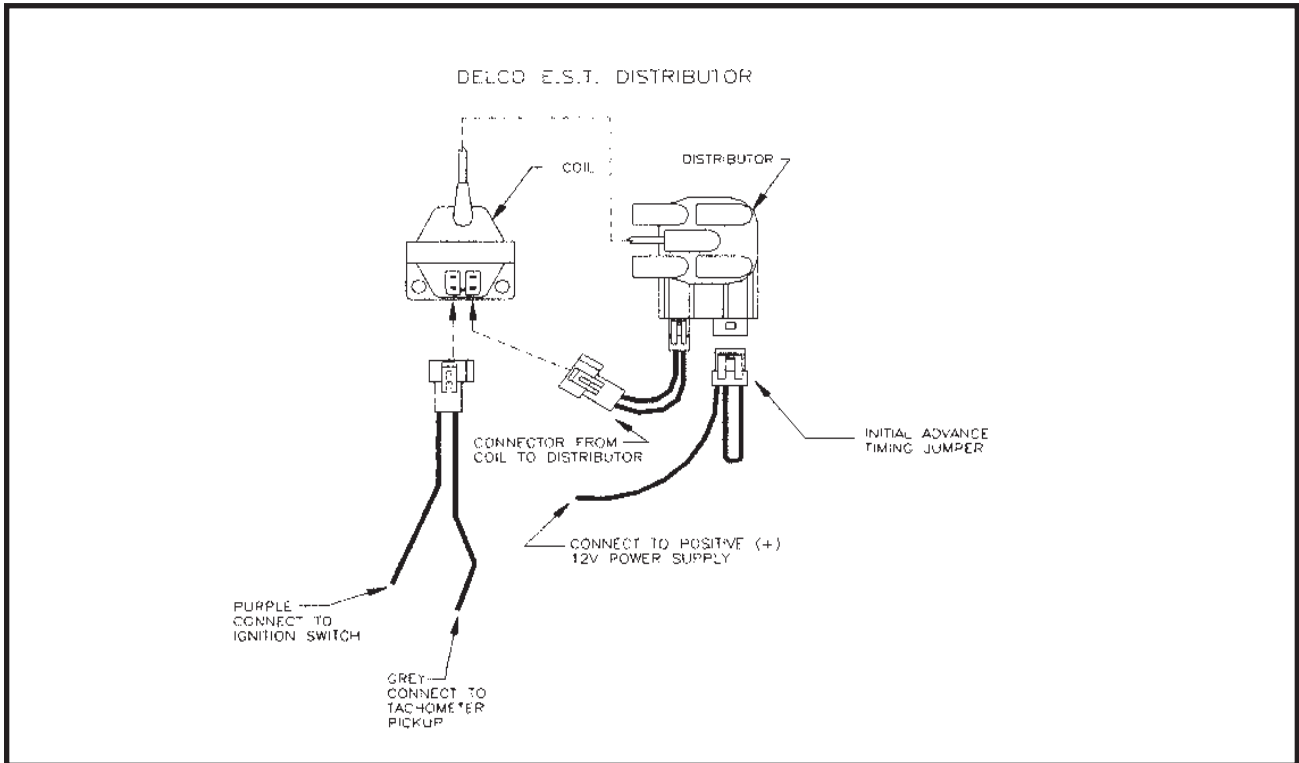


HARNESS PICTURED ON PAGE 15

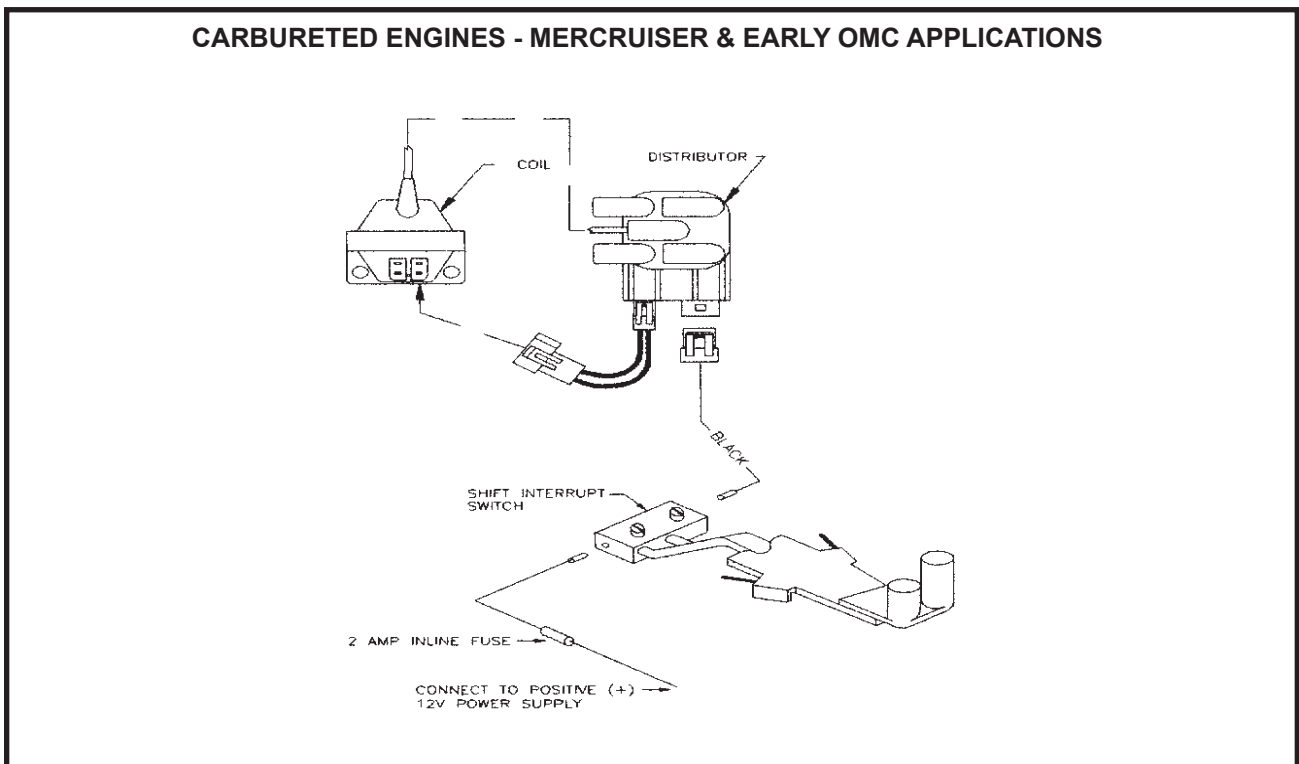
PANEL WIRING DIAGRAM



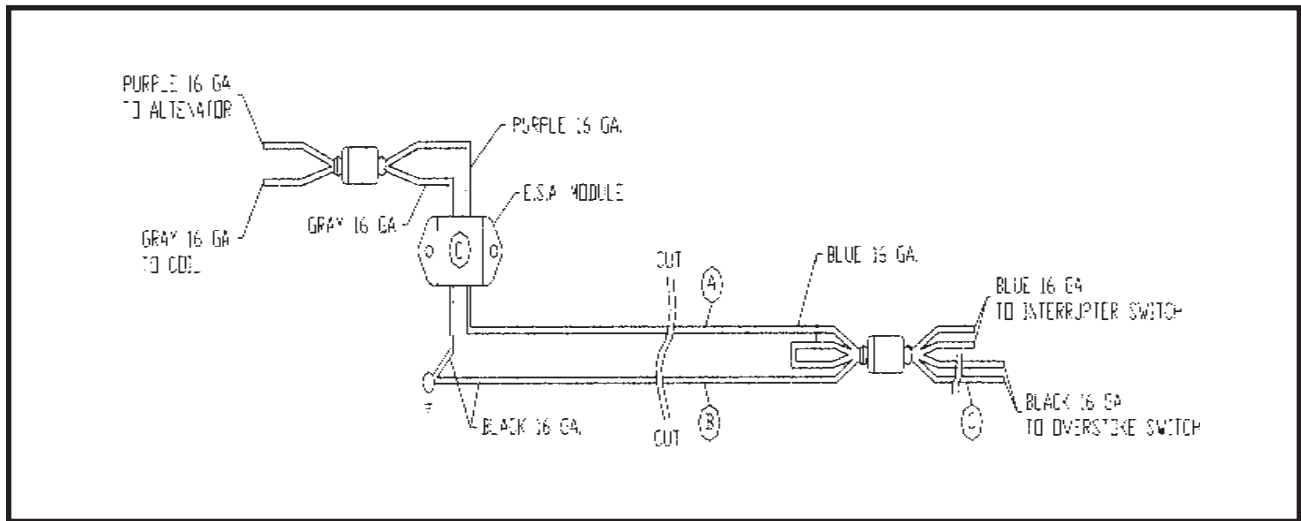
INITIAL TIMING JUMPER WIRING DIAGRAM



SHIFT ASSIST WIRING DIAGRAM



OMC SHIFT INTERRUPT DIAGRAM

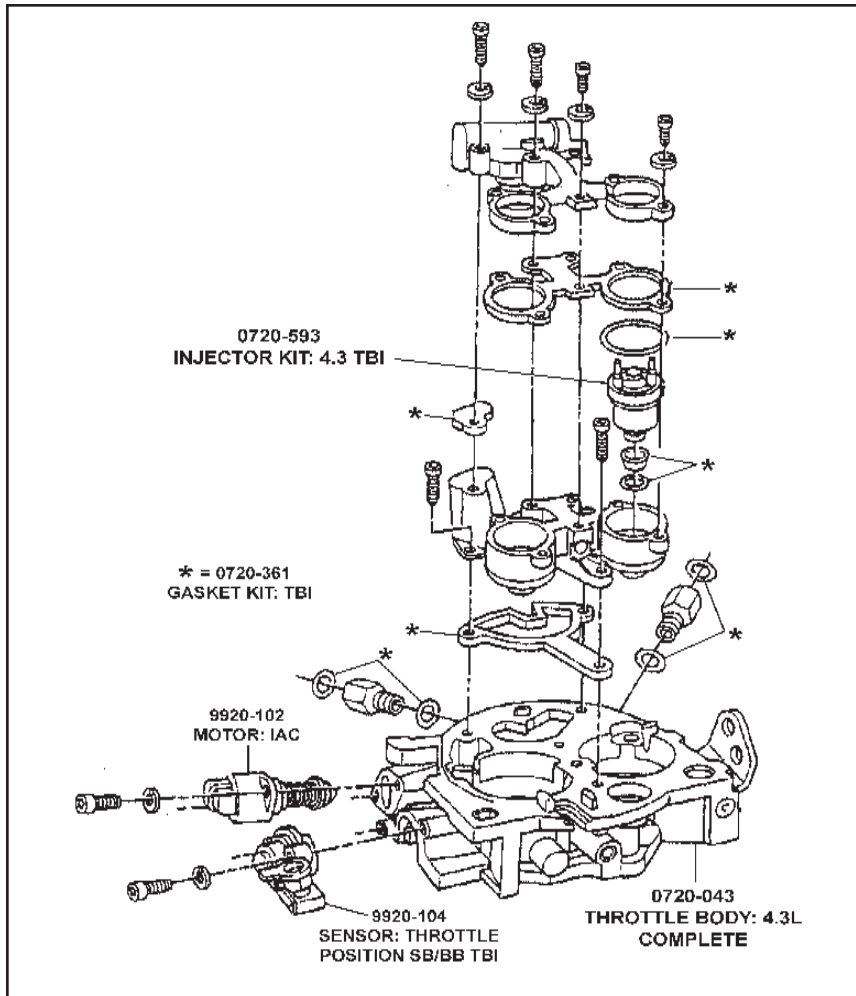


Installation Instructions:

1. Cut the blue 16 gauge wire (A) and connect to 12V positive supply when ignition switch is in the "ON" position with 2 amp in-line fuse.
2. Cut the black 16 gauge wire (B) and connect the shift interrupt wire on the engine. (Refer to Shift Cutout Wiring Diagram.)
3. Cut the black 16 gauge wire (C). The overstroke switch and the E.S.A. module are no longer used.

/// MARINEPOWER™
The Force Behind The Fun.™

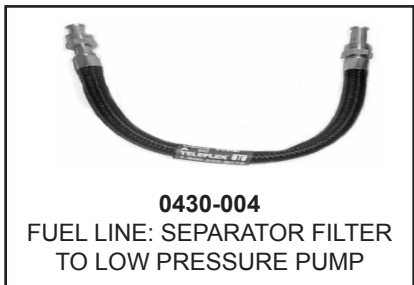
THROTTLE BODY



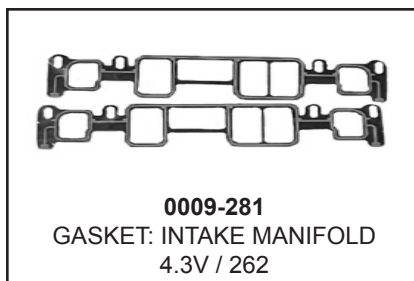
INTAKE



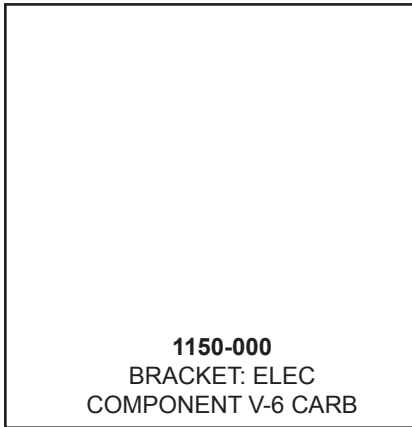
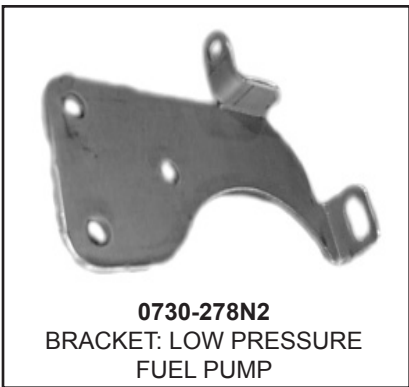
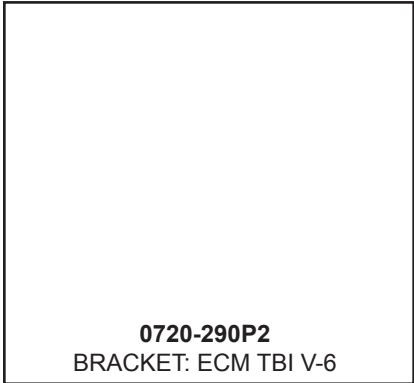
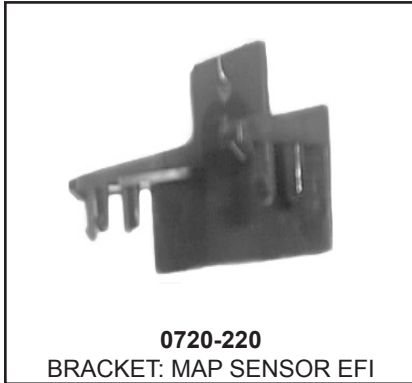
FUEL LINES



GASKETS & ADAPTER



BRACKETS

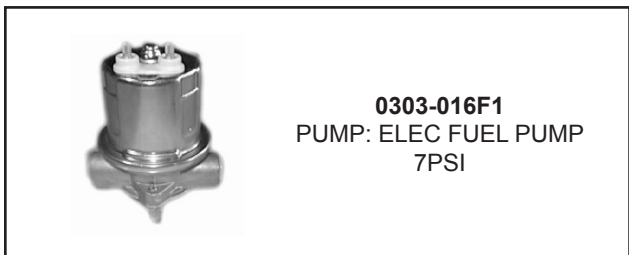


HARNESSES



REFER TO PAGES 29 & 30 FOR WIRING HARNESS DIAGRAM

FUEL PUMPS



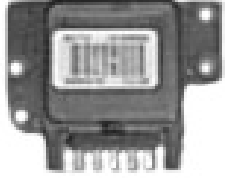
ELECTRICAL



0806-004
SENSOR: KNOCK 4.3
EFI/MSTS




0806-020F12
SENSOR: MAP ALL
EFI/MSTS (MEFI 1 &2)



0806-014
MODULE: KNOCK 4.3



0806-010F12
SENDER: TEMP
EFI/MSTS




0806-599
MODULE: ECM EFI #2
MEFI 1

Order This ECM To
Replace The Following ECM:
Model #: 16220371 or
Model #: 16189069
The #16189069 ECM has offset
hole pattern - it will require drilling
additional hole to fit replacement
ECM bolt pattern.



0806-596
MODULE: ECM EFI #3
MEFI 2

Order This ECM To
Replace The Following ECM:
Model #: 16210729



0806-600
MODULE: ECM >98 #4
MEFI 3 / MEFI 4

Order This ECM To
Replace The Following ECM:
Model #: 16237009

NOTE:
BEFORE ORDERING ECM MODULE, THE PROGRAM NUMBERS THAT
ARE RECORDED ON THE BACK OF THE ECM WILL BE REQUIRED TO
CORRECTLY PROGRAM REPLACEMENT MODULE.

MISCELLANEOUS



0432-048
BASE: FILTER FUEL/WATER
SEPARATOR



0432-049
FILTER: FUEL/WATER SEPA-
RATOR



0702-285
PLATE: ADAPTER TBI



0950-102
COVER: WEATHER VORTEC

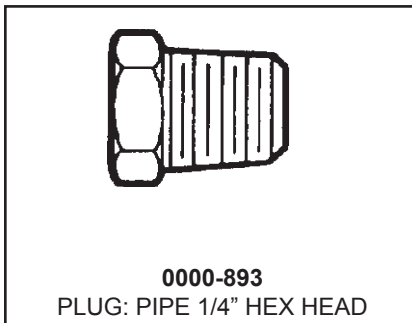
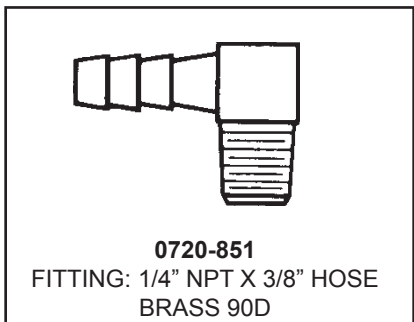
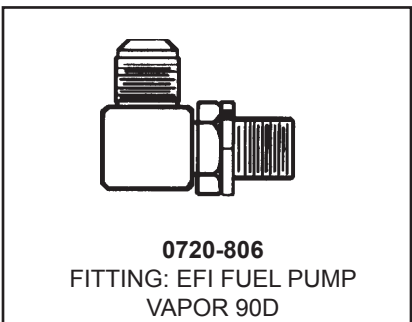
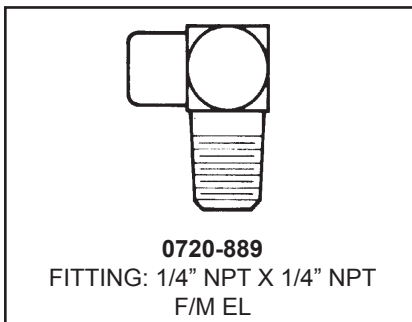
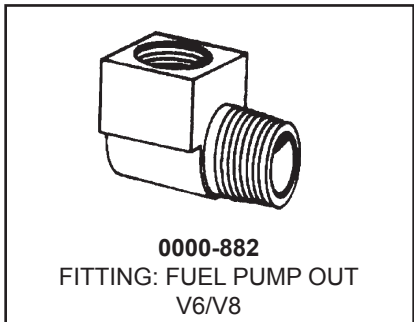
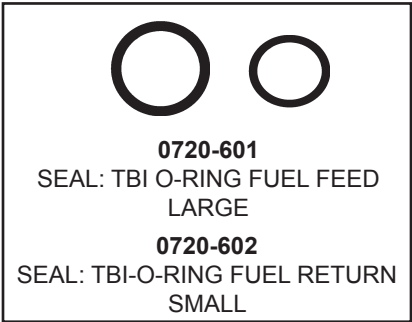
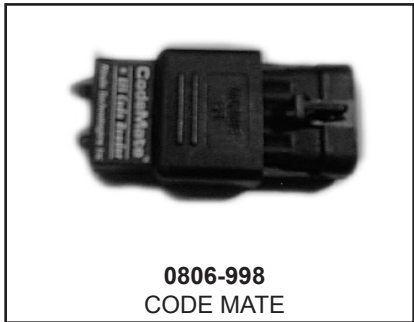


0950-824
COVER: WEATHER EFI
NON-VORTEC

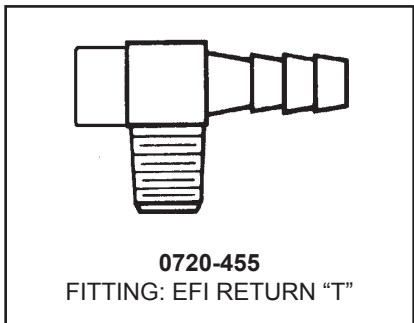


0720-000
FLAME ARRESTOR: 8" TBI

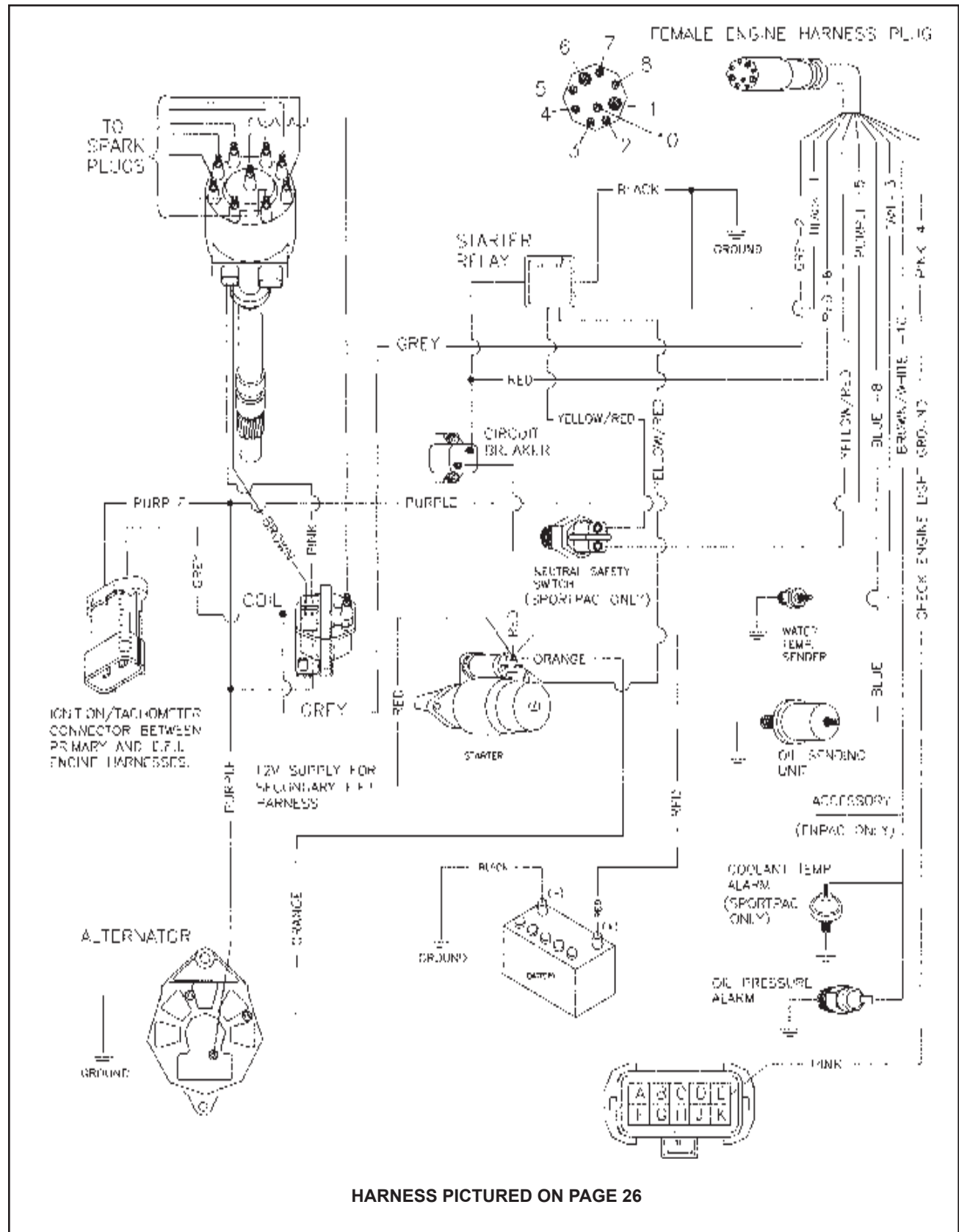
MISCELLANEOUS - Continued



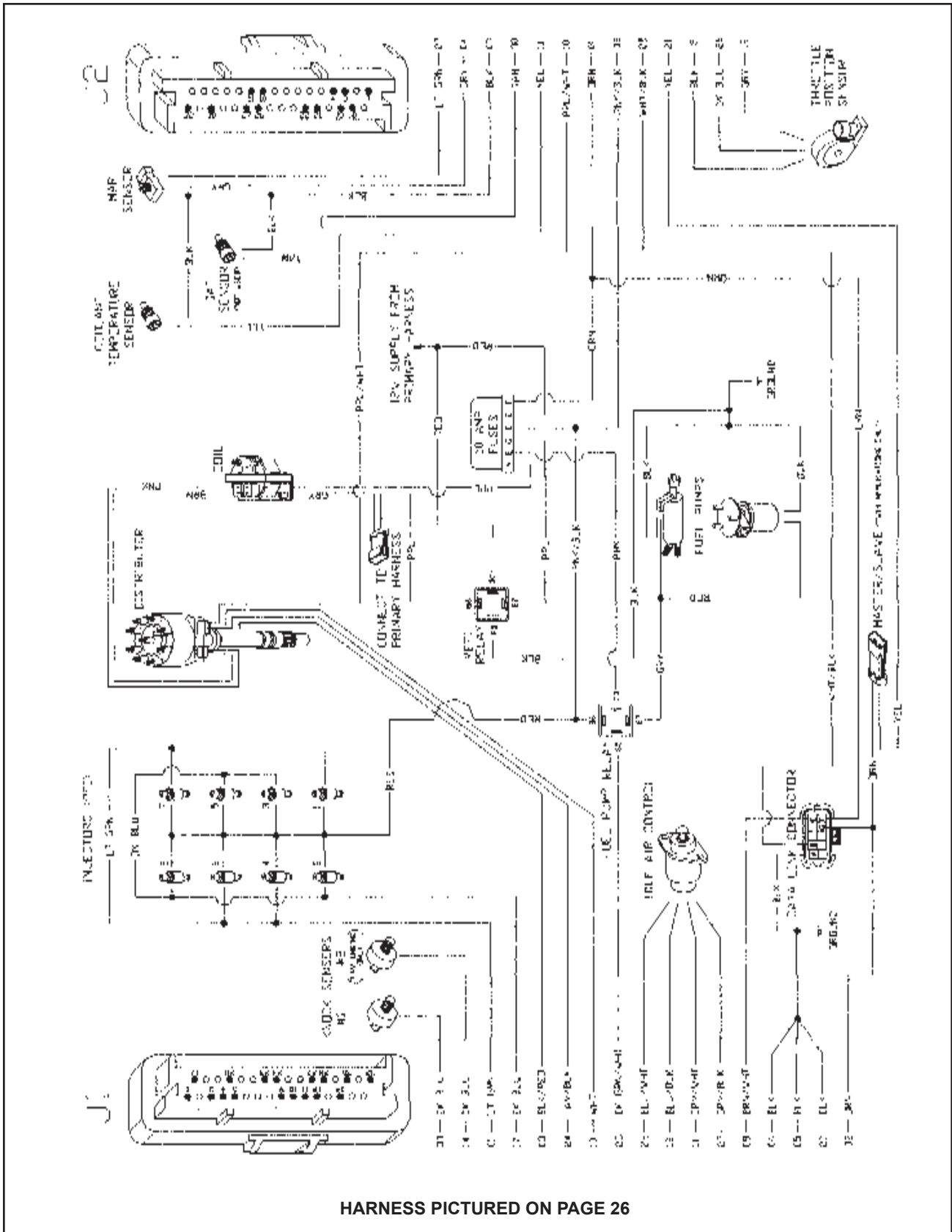
MARINEPOWER
The Force Behind The Fun.™



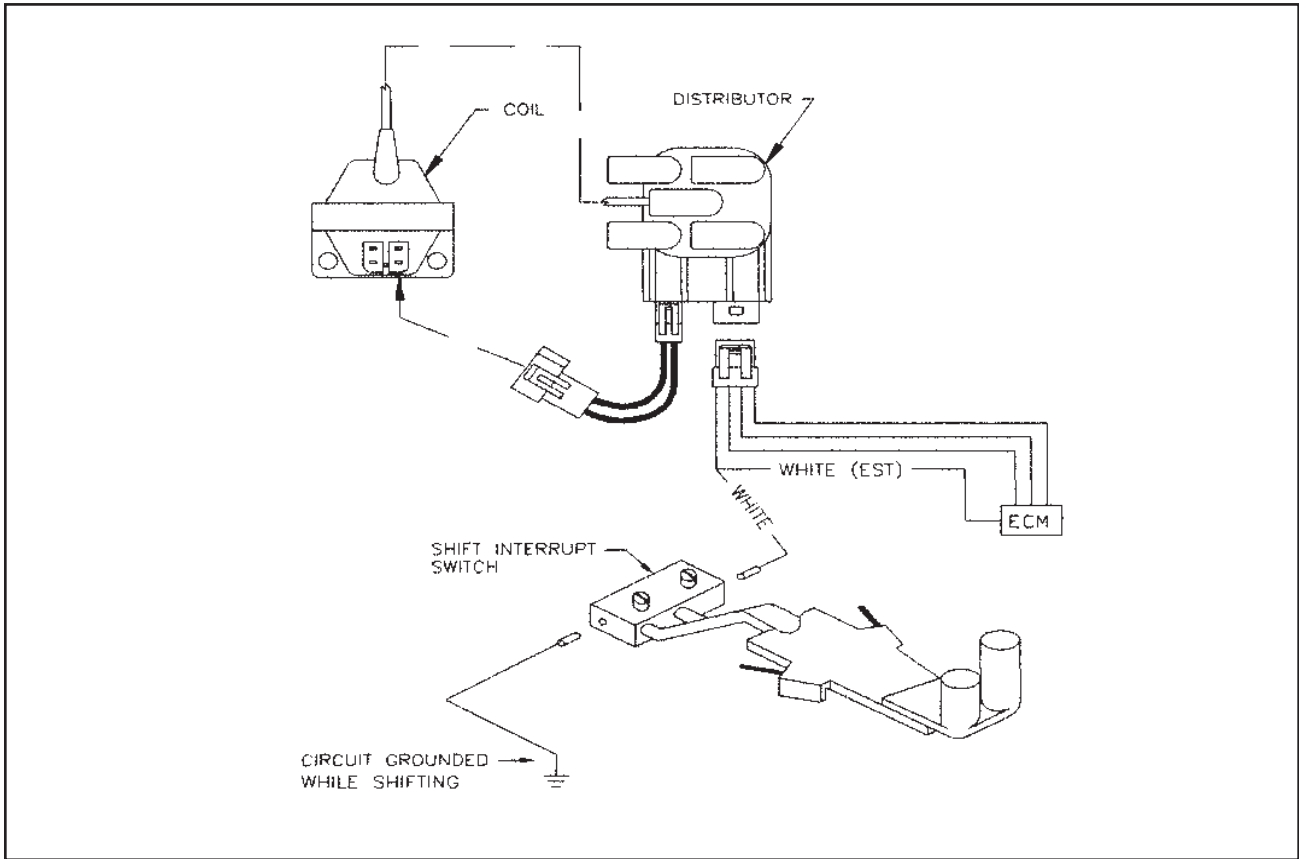
EFI PRIMARY WIRING HARNESS



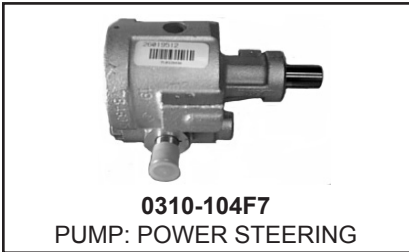
EFI SECONDARY WIRING HARNESS



SHIFT INTERRUPT DIAGRAM



POWER STEERING



0310-104F7
PUMP: POWER STEERING



0310-105F7
RESERVOIR: POWER STEERING



0310-001
PULLEY: POWER STEERING



0310-004
PUMP: POWER STEERING OLD STYLE



0570-000
BRACKET: P/S-SEAPUMP



0310-203
BRACKET: P/S PUMP MOUNTING



0791-006
BRACKET: OIL COOLER 6"



0310-109K8
BRACKET: RESERVOIR RAW WATER



0310-255
BRACKET: RESERVOIR FRESH WATER



0310-007N3
BRACKET: P/S/TENSION



0440-001
COOLER: OIL 5" X 1-1/4"



0547-351
BELT: POWER STEERING SB



HPWS-010
HOSE: 5/8" POWER STEERING 2 FT REQUIRED



HPWS-006
HOSE: 3/8" RESERVOIR-COOLER 3 FT REQUIRED



0310-110
HOSE: P/S PRESSURE



0310-111
HOSE: P/S RETURN

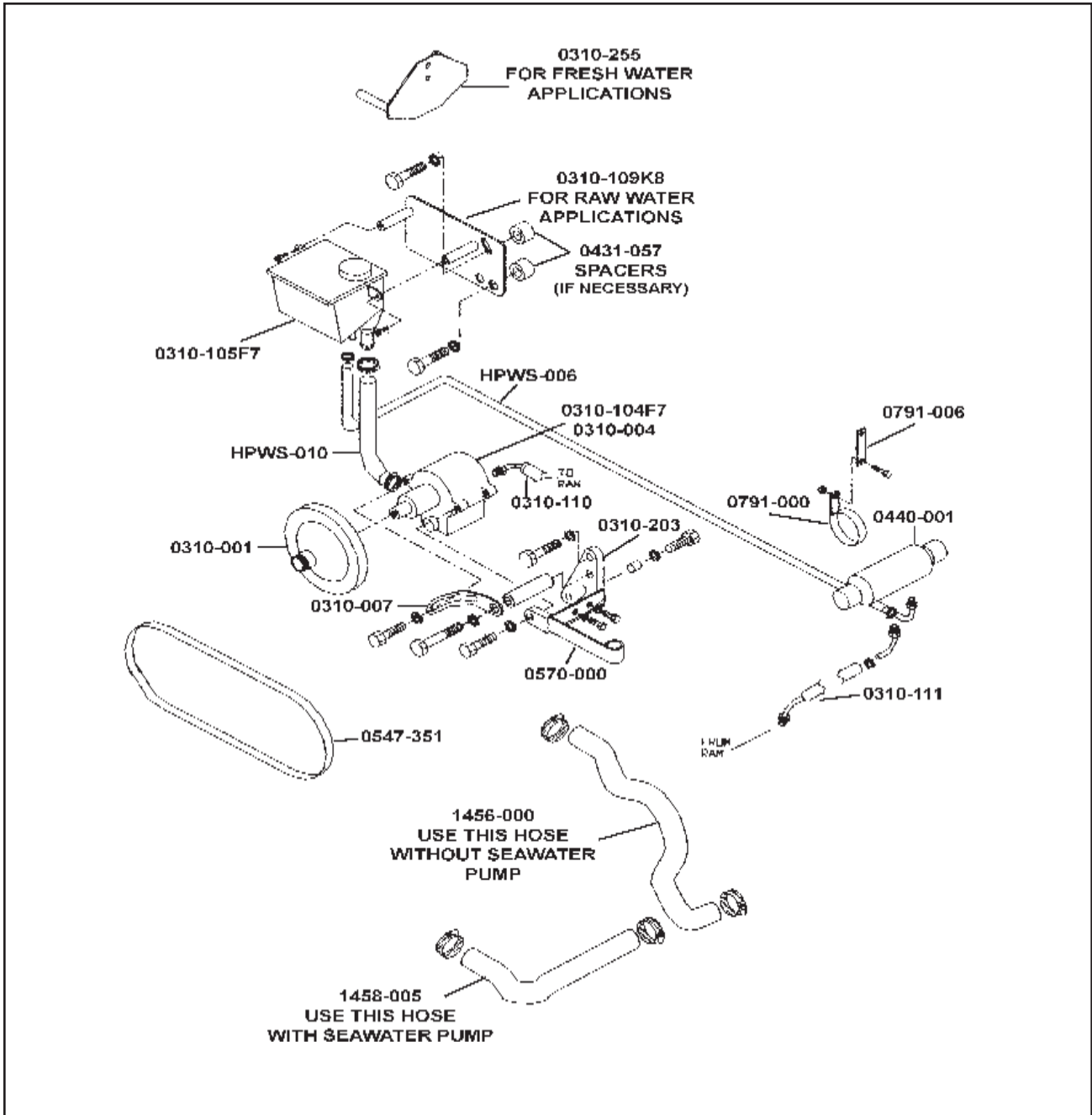


1456-000
HOSE: RW HSG - COOLER



1458-005
HOSE: SEAPUMP - COOLER

POWER STEERING DIAGRAM

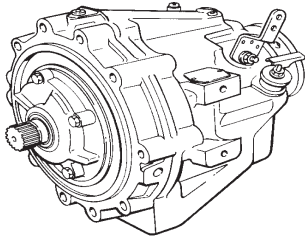


#0310-350
KIT: POWER STEERING RAW WATER SB
#0311-350
KIT: POWER STEERING FRESH WATER SB

NOTE: MARINE POWER POWER STEERING KIT WILL NOT RETROFIT ON MERCUISER APPLICATIONS WITH FRESH WATER COOLING

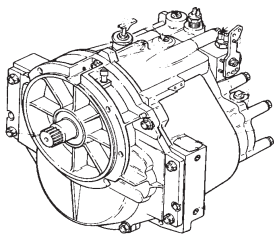
TRANSMISSIONS

VELVET DRIVE DIRECT DRIVE



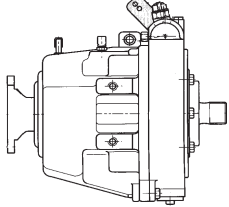
6017-004
GEAR: 71C 1:1
6018-002
GEAR: 72C 1:1

VELVET DRIVE 5000C SERIES



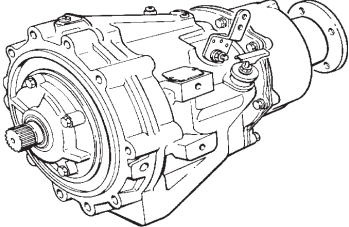
6020-001
GEAR: 5000C 1:1
6020-002
GEAR: 5000C 1.25:1
6020-003
GEAR: 5000C 1.5:1
6020-004
GEAR: 5000C 2.0:1
6020-005
GEAR: 5000C 2.5:1
6020-006
GEAR: 5000C 2.8:1

HURTH DIRECT DRIVE



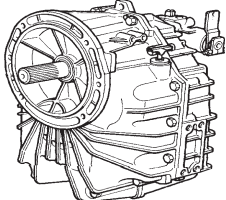
6450-100
GEAR: 450D 1:1

VELVET DRIVE 72C SERIES



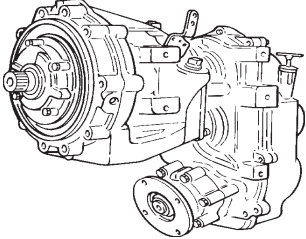
6018-004
GEAR: 72C 1.5:1
6018-106
GEAR: 72C 1.88:1
6018-210
GEAR: 72C 2.1:1
6018-010
GEAR: 72C 2.5:1
6018-012
GEAR: 72C 2.9:1

HURTH



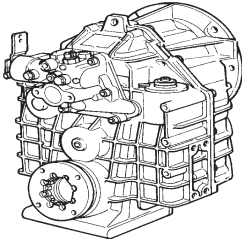
6450-125
GEAR: 450A 1.25:1
6450-150
GEAR: 450A 1.5:1
6450-200
GEAR: 450A 2.0:1

VELVET DRIVE 72C V-DRIVE SERIES



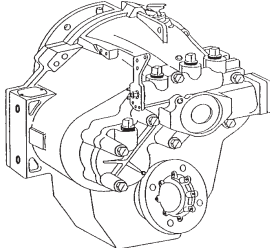
6005-012
GEAR: 72C V-DRIVE 1.2:1
GEAR DRIVEN
6005-013
GEAR: 72C V-DRIVE 1.2:1
CHAIN DRIVEN
6005-010
GEAR: 72C V-DRIVE 1.5:1
CHAIN DRIVEN
6005-011
GEAR: 72C V-DRIVE 1.5:1
GEAR DRIVEN
6005-002
GEAR: 72C V-DRIVE 1.9:1
GEAR DRIVEN
6005-003
GEAR: 72C V-DRIVE 1.9:1
CHAIN DRIVEN
6005-004
GEAR: 72C V-DRIVE 2.5:1
CHAIN DRIVEN
6005-005
GEAR: 72C V-DRIVE 2.5:1
GEAR DRIVEN

HURTH V-DRIVE



6635-130
GEAR: 630V 1.3:1
6635-150
GEAR: 630V 1.6:1
6635-210
GEAR: 630V 2.0:1
6635-250
GEAR: 630V 2.5:1

VELVET DRIVE 5000V V-DRIVE SERIES




6002-002
GEAR: 5000V 1.25:1
6002-003
GEAR: 5000V 1.5:1
6002-004
GEAR: 5000V 2.0:1
6022-005
GEAR: 5000V 2.5:1

NOTE:
SOME TRANSMISSIONS LISTED MAY NOT BE AN IN-STOCK ITEM. LEAD TIMES MAY APPLY TO CERTAIN TRANSMISSIONS. CALL FOR AVAILABILITY.

GEAR LINES, COOLER, SWITCHES & FITTING



1256-037F8
GEAR LINE: 37" SPORTPAC
1256-042F8
GEAR LINE: 42" SPORTPAC
1250-003E3
GEAR LINE: 45" SPORTPAC



0440-549G3
COOLER: DUAL 5 X 9 GEAR



0000-899
FITTING: OIL / GEAR
COOLER



6640-005
SWITCH: NEUTRAL SAFETY



6450-204
SWITCH: GEAR ALARM
HI-TEMP OIL

SHIFT BRACKETS



1194-630
BRACKET: SHIFT HURTH 630A



1194-500J12
BRACKET: SHIFT BW5000



1194-000
BRACKET: SHIFT GEAR BW
71C/72C

/// MARINEPOWER™
The Force Behind The Fun.™