

MALE - MALE DOUBLE NIPPLE

Male thread EN ISO 228-1	Male thread EN ISO 228-1	Material	Weight/pc Kg	Reference
G 1/2	G 1/2	Brass	0.04	UMM013013
G 3/4	G 3/4	Brass	0.06	UMM019019
G 1	G 1	Brass	0.14	UMM025025
G 1.1/4	G 1.1/4	Brass	0.17	UMM032032
G 1.1/2	G 1.1/2	Brass	0.23	UMM038038
G 2	G 2	Brass	0.32	UMM050050
G 2.1/2	G 2.1/2	Brass	0.56	UMM063063
G 3	G 3	Brass	0.64	UMM075075
G 4	G 4	Brass	1.03	UMM100100
G 1/2	G 1/2	Stainless steel	0.05	RUMM013013
G 3/4	G 3/4	Stainless steel	0.06	RUMM019019
G 1	G 1	Stainless steel	0.13	RUMM025025
G 1.1/4	G 1.1/4	Stainless steel	0.16	RUMM032032
G 1.1/2	G 1.1/2	Stainless steel	0.25	RUMM038038
G 2	G 2	Stainless steel	0.37	RUMM050050
G 2.1/2	G 2.1/2	Stainless steel	0.55	RUMM063063
G 3	G 3	Stainless steel	0.66	RUMM075075
G 4	G 4	Stainless steel	1.05	RUMM100100
G 1.1/2	G 1.1/2	Aluminium	0.04	AUMM038038
G 2	G 2	Aluminium	0.11	AUMM050050
G 2.1/2	G 2.1/2	Aluminium	0.12	AUMM063063
G 3	G 3	Aluminium	0.20	AUMM075075
G 4	G 4	Aluminium	0.27	AUMM100100
G 5	G 5	Aluminium	0.44	AUMM125125
G 6	G 6	Aluminium	0.55	AUMM150150



Thread EN ISO 228-1, BSP
Stainless steel AISI 316 - 1.4401

FEMALE - FEMALE DOUBLE NIPPLE

Female thread EN ISO 228-1	Female thread EN ISO 228-1	Material	Weight/pc Kg	Reference
G 1	G 1	Brass	0.11	UFF025025
G 1.1/4	G 1.1/4	Brass	0.17	UFF032032
G 1.1/2	G 1.1/2	Brass	0.28	UFF038038
G 2	G 2	Brass	0.31	UFF050050
G 2.1/2	G 2.1/2	Brass	0.70	UFF063063
G 3	G 3	Brass	0.91	UFF075075
G 2	G 2	Aluminium	0.15	AUFF050050
G 2.1/2	G 2.1/2	Aluminium	0.18	AUFF063063
G 3	G 3	Aluminium	0.25	AUFF075075
G 4	G 4	Aluminium	0.31	AUFF100100
G 5	G 5	Aluminium	0.34	AUFF125125



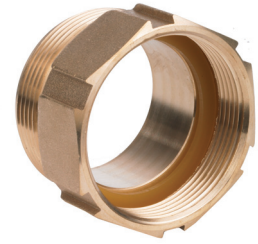
Thread EN ISO 228-1, BSP
PU thread seal for brass version, NBR for aluminium version
Stainless steel available on request

NIPPLES



MALE - FEMALE DOUBLE NIPPLE

Male thread EN ISO 228-1	Female thread EN ISO 228-1	Material	Weight/pc Kg	Reference
G 1/2	G 1/2	Brass	0.03	UMF013013
G 3/4	G 3/4	Brass	0.07	UMF019019
G 1	G 1	Brass	0.08	UMF025025
G 1.1/4	G 1.1/4	Brass	0.15	UMF032032
G 1.1/2	G 1.1/2	Brass	0.25	UMF038038
G 2	G 2	Brass	0.23	UMF050050
G 2.1/2	G 2.1/2	Brass	0.63	UMF063063
G 3	G 3	Brass	0.78	UMF075075



Thread complying with EN ISO 228-1, BSP
PU thread seal

MALE - MALE REDUCING NIPPLE

Male thread EN ISO 228-1	Male thread EN ISO 228-1	Material	Weight/pc Kg	Reference
G 1/2	G 3/4	Brass	0.13	UMM013019
G 3/4	G 1	Brass	0.10	UMM019025
G 1	G 1.1/4	Brass	0.20	UMM025032
G 1	G 1.1/2	Brass	0.25	UMM025038
G 1.1/4	G 1.1/2	Brass	0.24	UMM032038
G 1.1/4	G 2	Brass	0.32	UMM032050
G 1.1/2	G 2	Brass	0.32	UMM038050
G 2	G 2.1/2	Brass	0.55	UMM050063
G 2	G 3	Brass	0.54	UMM050075
G 2.1/2	G 3	Brass	0.58	UMM063075
G 3	G 4	Brass	1.24	UMM075100
G 1/2	G 3/4	Stainless steel	0.05	RUMM013019
G 3/4	G 1	Stainless steel	0.13	RUMM019025
G 1	G 1.1/4	Stainless steel	0.20	RUMM025032
G 1	G 1.1/2	Stainless steel	0.25	RUMM025038
G 1.1/4	G 1.1/2	Stainless steel	0.22	RUMM032038
G 1.1/4	G 2	Stainless steel	0.41	RUMM032050
G 1.1/2	G 2	Stainless steel	0.35	RUMM038050
G 2	G 2.1/2	Stainless steel	0.69	RUMM050063
G 2	G 3	Stainless steel	0.73	RUMM050075
G 2.1/2	G 3	Stainless steel	0.59	RUMM063075
G 3	G 4	Stainless steel	1.05	RUMM075100
G 1.1/2	G 2	Aluminium	0.14	AUMM038050
G 2	G 3	Aluminium	0.22	AUMM050075
G 2.1/2	G 3	Aluminium	0.19	AUMM063075
G 3	G 4	Aluminium	0.23	AUMM075100



Thread EN ISO 228-1, BSP
Stainless steel AISI 316 - 1.4401

NIPPLES



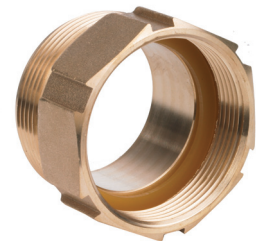
FEMALE - FEMALE REDUCING NIPPLE

Female thread EN ISO 228-1	Female thread EN ISO 228-1	Material	Weight/pc Kg	Reference
G 3/4	G 1	Brass	0.13	UFF019025
G 1	G 1.1/4	Brass	0.27	UFF025032
G 1.1/4	G 1.1/2	Brass	0.37	UFF032038
G 1.1/2	G 2	Brass	0.38	UFF038050
G 2	G 2.1/2	Brass	0.62	UFF050063
G 2.1/2	G 3	Brass	0.78	UFF063075
G 3	G 4	Brass	1.55	UFF075100
G 2	G 2.1/2	Aluminium	0.43	AUFF050063
G 2	G 3	Aluminium	0.35	AUFF050075
G 2.1/2	G 3	Aluminium	0.24	AUFF063075
G 2.1/2	G 4	Aluminium	0.38	AUFF063100
G 3	G 4	Aluminium	0.34	AUFF075100
G 4	G 5	Aluminium	1.22	AUFF100125
G 5	G 6	Aluminium	0.72	AUFF125150



MALE - FEMALE REDUCING NIPPLE

Male thread EN ISO 228-1	Female thread EN ISO 228-1	Material Kg	Weight/pc	Reference
G 1/2	G 3/4	Brass	0.03	UMF013019
G 3/4	G 1	Brass	0.13	UMF019025
G 1	G 3/4	Brass	0.13	UMF025019
G 1	G 1.1/4	Brass	0.14	UMF025032
G 1	G 1.1/2	Brass	0.25	UMF025038
G 1.1/4	G 1	Brass	0.14	UMF032025
G 1.1/4	G 1.1/2	Brass	0.23	UMF032038
G 1.1/4	G 2	Brass	0.32	UMF032050
G 1.1/2	G 1	Brass	0.23	UMF038025
G 1.1/2	G 1.1/4	Brass	0.24	UMF038032
G 1.1/2	G 2	Brass	0.35	UMF038050
G 2	G 1.1/4	Brass	0.31	UMF050032
G 2	G 1.1/2	Brass	0.23	UMF050038
G 2	G 2.1/2	Brass	0.42	UMF050063
G 2	G 3	Brass	1.17	UMF050075
G 2.1/2	G 2	Brass	0.52	UMF063050
G 2.1/2	G 3	Brass	0.72	UMF063075
G 3	G 2	Brass	0.41	UMF075050
G 3	G 2.1/2	Brass	0.57	UMF075063
G 3	G 4	Brass	1.08	UMF075100
G 4	G 3	Brass	0.97	UMF100075
G 2	G 1.1/4	Aluminium	0.18	AUMF050032
G 2	G 1/2	Aluminium	0.17	AUMF050038
G 2.1/2	G 2	Aluminium	0.18	AUMF063050
G 3	G 2	Aluminium	0.33	AUMF075050
G 2	G 2.1/2	Aluminium	0.25	AUMF050063
G 3	G 2.1/2	Aluminium	0.30	AUMF075063
G 4	G 2.1/2	Aluminium	0.34	AUMF100063
G 2	G 3	Aluminium	0.23	AUMF050075
G 2.1/2	G 3	Aluminium	0.22	AUMF063075
G 4	G 3	Aluminium	0.34	AUMF100075
G 5	G 4	Aluminium	0.34	AUMF125100



Thread EN ISO 228-1, BSP
PU thread seal for brass version



MALE THREADED WELDING NIPPLES AN FLANGES

MALE THREADED FLANGE

ND	Inch	OD welding end mm	Thread EN ISO 228-1	Material	Reference
15	1/2"	21,34	G 1/2	SS 316Ti	RLMFD013BSP
20	3/4"	26,67	G 3/4	SS 316Ti	RLMFD019BSP
25	1"	33,40	G 1	SS 316Ti	RLMFD025BSP
32	1.1/4"	42,16	G 1.1/4	SS 316Ti	RLMFD032BSP
40	1.1/2"	48,26	G 1.1/2	SS 316Ti	RLMFD038BSP
50	2"	60,33	G 2	SS 316Ti	RLMFD050BSP
65	2.1/2"	75,00	G 2.1/2	SS 316Ti	RLMFD063BSP
80	3"	88,90	G 3	SS 316Ti	RLMFD075BSP
100	4"	114,30	G 4	SS 316Ti	RLMFD0100BSP
125	5"	141,30	G 5	SS 316Ti	RLMFD0125BSP
150	6"	168,28	G 6	SS 316Ti	RLMFD0150BSP



Fixed flange: welding neck flange DIN 2632 PN10, DIN 2633 PN 16 / EN 1092-1 11 B.

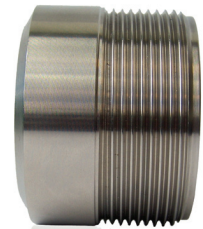
Welding neck flanges according to ASTM A 182 ANSI B 1.16 upon request available

Flange pressure class: DIN PN10/16

Stainless steel AISI 316Ti - 1.4571

MALE WELDING NIPPLE BSP

ND	Inch	Total length mm	OD welding end	Thread EN ISO 228-1	Material	Reference
15	1/2"	35	21,34	G 1/2	SS 316Ti	RLM013BSP
20	3/4"	35	26,67	G 3/4	SS 316Ti	RLM019BSP
25	1"	35	33,40	G 1	SS 316Ti	RLM025BSP
32	1.1/4"	35	42,16	G 1.1/4	SS 316Ti	RLM032BSP
40	1.1/2"	35	48,26	G 1.1/2	SS 316Ti	RLM038BSP
50	2"	45	60,33	G 2	SS 316Ti	RLM050BSP
65	2.1/2"	45	75,00	G 2.1/2	SS 316Ti	RLM065BSP
80	3"	45	88,90	G 3	SS 316Ti	RLM075BSP
100	4"	45	114,30	G 4	SS 316Ti	RLM100BSP
125	5"	60	141,30	G 5	SS 316Ti	RLM125BSP
150	6"	60	168,28	G 6	SS 316Ti	RLM150BSP



Welding nipple male threaded EN ISO 228-1 BSP, flat sealing

Stainless steel AISI 316Ti - 1.4571