

Job Name/Location:

Tag No.:

Date:

For: File Resubmit

PO No.:

Approval Other

Architect:

GC:

Engr:

Mech:

Rep:

(Company)

(Project Manager)

LUU429HV

with Communication Kit (PACCMB00A) and Choice of Third-Party A-Coil

**Note:**

Submittal covers the outdoor unit only, and is intended to be used when the outdoor unit will be paired with a choice of third-party A-Coil. In cases where the outdoor unit is to be paired with an LG indoor unit, the respective single-zone system (level) submittal should be used.

Outdoor Unit LUU429HV:**Capacities:**

Cooling Capacity (Btu/h)	39,000
Heating Capacity (Btu/h)	39,000

Cooling Nominal Test Conditions:

Indoor: 80°F DB / 67°F WB
Outdoor: 95°F DB / 75°F WB

Heating Nominal Test Conditions:

Indoor: 70°F DB / 60°F WB
Outdoor: 47°F DB / 43°F WB

Electrical:

Power Supply (V ¹ / Hz / Ø)	208-230 / 60 / 1
MOP (A)	40
MCA (A)	32
Rated Amps (A)	25.2
Compressor (A)	22
Fan Motor (A)	1.6 x 2
Cooling / Heating Power Input (kW)	3.39 / 3.65

MOP - Maximum Overcurrent Protection

MCA - Minimum Circuit Ampacity

Piping:

Liquid (in., O.D.)	3/8
Vapor (in., O.D.)	5/8
Additional Refrigerant (oz. / ft.)	0.43
Min. / Max. Pipe Length (ft.) ²	6.6 / 246
Piping Length (no add'l refrigerant, ft.)	24.6
Max. Elevation (ft.)	98.4

Operating Range:

Cooling (°F DB) ³	5 ~ 118
Heating (°F WB)	-4 ~ +64

Fan:

Type x Quantity	Propeller x 2
Motor/Drive	Brushless Digitally Controlled / Direct
Air Flow Rate (CFM)	1,942 x 2

Additional Outdoor Unit Data:

Compressor Type x Qty.	Scroll x 1
Refrigerant Type	R410A
Refrigerant Charge (lbs.)	7.5
Sound Pressure (Cooling / Heating) ⁴	52 / 54
Net / Shipping Weight (lbs.)	198.9 / 223.1

Notes:

- Acceptable operating voltage: 187V-253V.
- Piping lengths are equivalent.
- Cooling range can be extended from 5°F down to -4°F using the Low Ambient Wind Baffle Kit (sold separately). If the optional low ambient wind baffle (ZLABGP04A) is used, one wind baffle is required for each outdoor unit fan.
- Sound Pressure levels are tested in an anechoic chamber under ISO Standard 3745.
- Communication cable from the outdoor unit to the communication kit is to be field supplied

For a complete list of available accessories, contact your LG representative.

For continual product development, LG reserves the right to change specifications without notice.

© LG Electronics U.S.A., Inc., Englewood Cliffs, NJ. All rights reserved. "LG Life's Good" is a registered trademark of LG Corp. /www.lgna.com

Compatible System Components:**Communication Kit PACCMB00A:****Communication / Power:****Communication Kit to Outdoor Unit:**

Communication cable is to be min. three-conductor, 14 AWG, stranded, shielded or unshielded.⁵

Communication Kit to Thermostat:

Follow communication cable specifications provided by the third-party thermostat.

Communication Kit to Furnace:

Power supply is listed at 24V (AC). Follow the power wiring specifications provided by the furnace manufacturer (furnace supplies the power).⁶

Environmental Data:

Operating Temperature	32° to 104°F
Storage Temperature	-4° to +140°F
Humidity	0-98% (non-condensing)

1. Third-Party A-Coil LG-C2-48-17L:⁷**Unit Data:**

Nominal Capacity	3.5 ton
Type	17.5"
Configuration	Cased
Coil Material	Copper
Case Width x Height x Depth (in.)	17.5 x 27.5 x 21
Liquid Piping (in., O.D.)	3/8
Vapor Piping (in., O.D.) ⁸	7/8
Refrig. Piping Connections	Left

OR**2. Third-Party A-Coil LG-C2-48-21L:⁷****Unit Data:**

Nominal Capacity	3.5 ton
Type	21"
Configuration	Cased
Coil Material	Copper
Case Width x Height x Depth (in.)	21 x 27.5 x 21
Liquid Piping (in., O.D.)	3/8
Vapor Piping (in., O.D.) ⁸	7/8
Refrig. Piping Connections	Left

and is to be a minimum three-conductor, 14 AWG, stranded, shielded or unshielded (if shielded, it must be grounded to the chassis of outdoor unit only), and must comply with applicable local and national codes.

6. Power wiring size must comply with the applicable local and national codes.

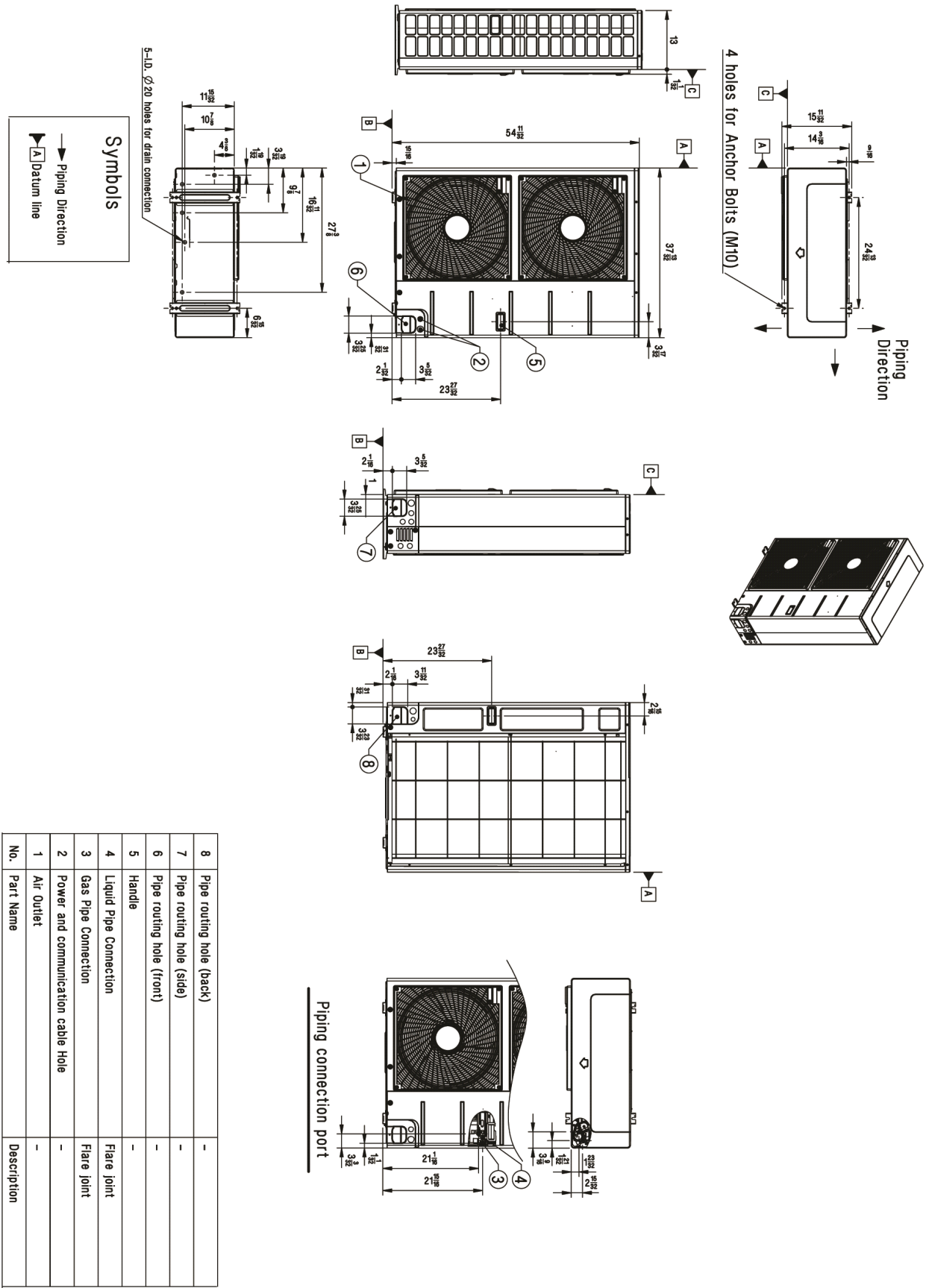
7. Must follow installation instructions in the applicable installation manuals.

8. Field provided reducer needed at coil side.

LUU429HV



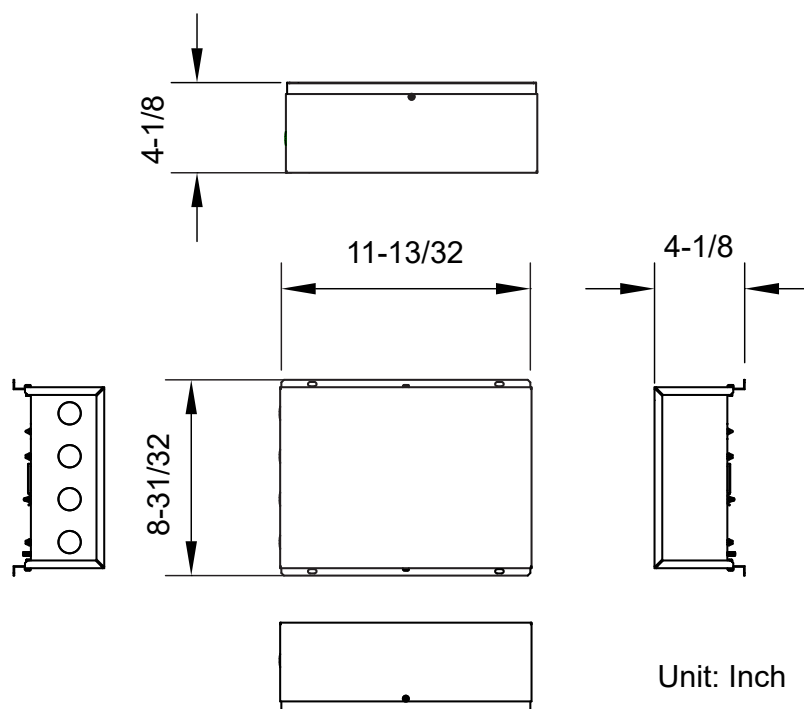
Tag No.: _____
Date: _____
PO No.: _____



Communication Kit (PACCMB00A)



Tag No.: _____
 Date: _____
 PO No.: _____



Recommend (Front View)

