

D-Link Quick Installation Guide

This product can be used with:
Windows XP, Me, 2000,
98 Second Edition



DUB-E100

D-Link USB 2.0 Fast
Ethernet Adapter

Before You Begin

You must have at least the following:

- Windows XP/Me/2000/98 Second Edition
- One Available USB Port
- CD-ROM Drive

Check Your Package Contents

These are the items included with your purchase:

If any of the below items are missing, please contact your reseller.



- **DUB-E100 USB 2.0 Fast Ethernet Adapter**



- **Drivers on CD-ROM**

1

System Requirements

- Pentium Class PC 200Mhz or above
- 16MB RAM
- One Available USB Port
- Microsoft Windows XP, 2000, Me, 98 Second Edition

2

Installing The DUB-E100

Plug the “A” Connector of the DUB-E100’s USB cable into an available USB slot on your computer.



Attach a CAT5 Ethernet cable with an RJ-45 connector to the RJ-45 jack of the DUB-E100



Attach the other end of the CAT5 Ethernet cable to a switch, hub, or router/gateway.



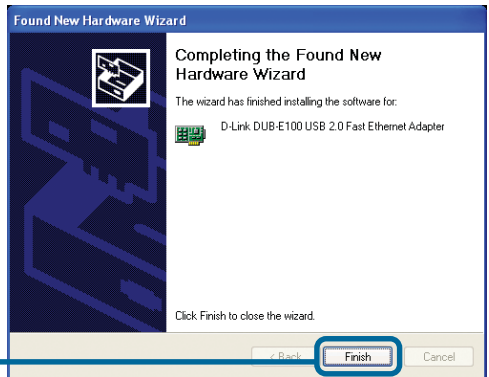
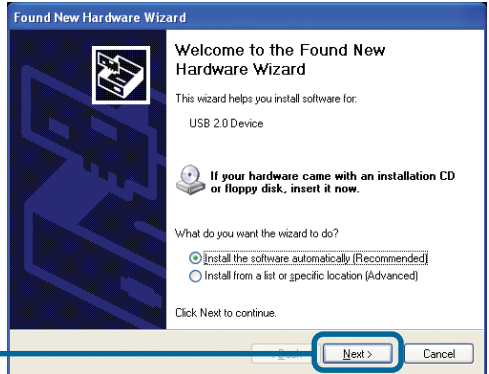
Your computer should automatically detect the DUB-E100 and prompt you to install the driver. Please proceed to the next section to complete the driver installation.

3

Completing The Driver Installation

Windows XP & Me Users

Note: Windows Me Screens will vary slightly from the Windows XP screens shown.



Windows Me users may be asked to restart the computer. Select **“Yes”** to restart your computer and complete the installation.

3

Completing The Driver Installation

Windows 2000 Users

Found New Hardware Wizard

Welcome to the Found New Hardware Wizard

This wizard helps you install a device driver for a hardware device.

To continue, click Next.

Click **Next**

Found New Hardware Wizard

Install Hardware Device Drivers

A device driver is a software program that enables a hardware device to work with an operating system.

This wizard will complete the installation for this device:

USB 2.0 Device

A device driver is a software program that makes a hardware device work. Windows needs driver files for your new device. To locate driver files and complete the installation click Next.

What do you want the wizard to do?

- Search for a suitable driver for my device (recommended)
- Display a list of the known drivers for this device so that I can choose a specific driver

Click **Next**

Found New Hardware Wizard

Locate Driver Files

Where do you want Windows to search for driver files?

Search for driver files for the following hardware device:

USB 2.0 Device

The wizard searches for suitable drivers in its driver database on your computer and in any of the following optional search locations that you specify.

To start the search, click Next. If you are searching on a floppy disk or CD-ROM drive, insert the floppy disk or CD before clicking Next.

Optional search locations:

- Floppy disk drives
- CD-ROM drives
- Specify a location
- Microsoft Windows Update

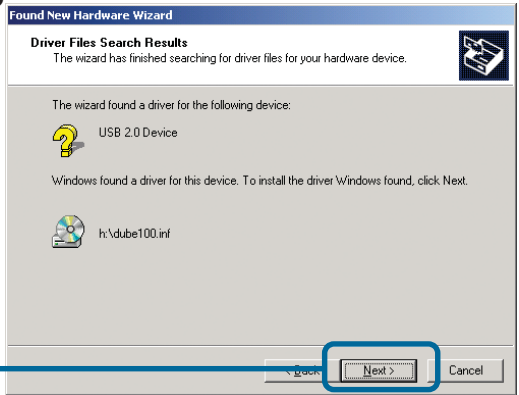
Click **Next**

Make sure to check **ONLY** the **CD-ROM drives** box and uncheck all other boxes.

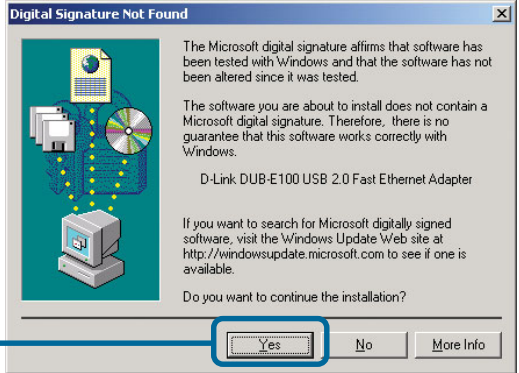
3 Completing The Driver Installation

Windows 2000 Users

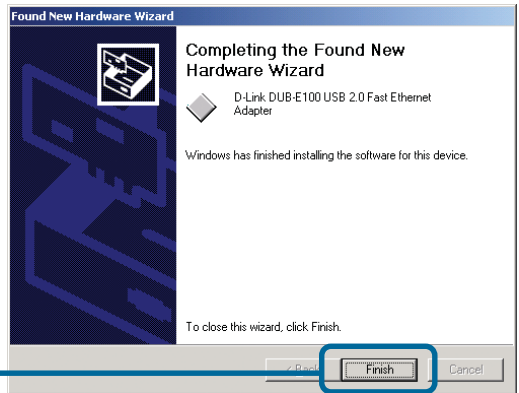
Click **Next**



Click **Yes**



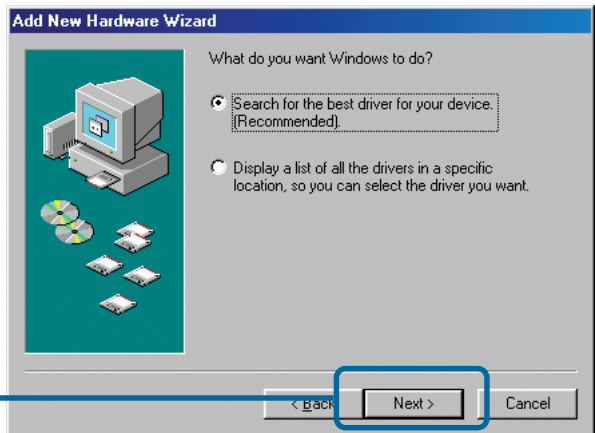
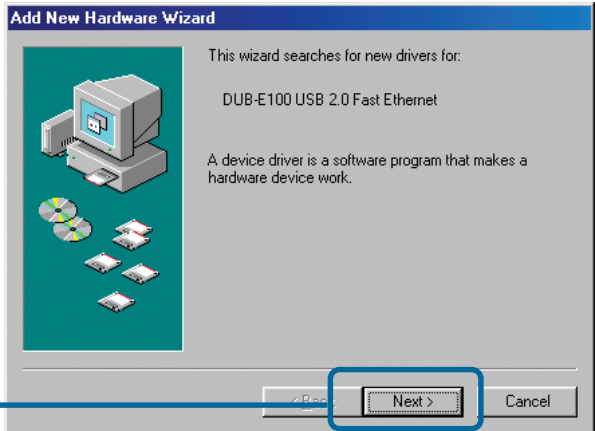
Click **Finish**



You may be asked to restart your computer. Select **Yes** to restart your computer and complete the installation.

3 Completing The Driver Installation

Windows 98SE Users



3

Completing The Driver Installation

Windows 98SE Users

Click **Next**

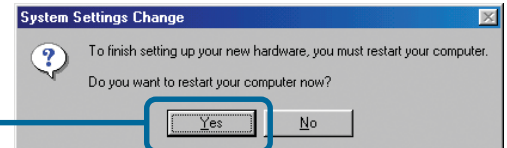
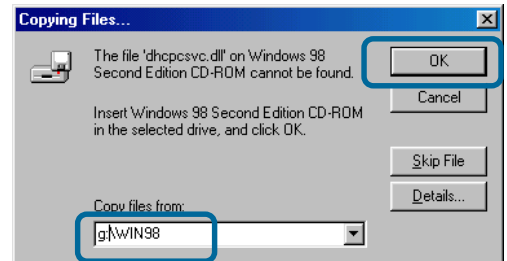
Note: You may see these next 2 screens.

Click **Next**

Type in g:\win98 (use the appropriate letter corresponding to your CD-ROM drive) then Click **OK**.

Click **Finish**

Click **Yes**



4

The Installation is Complete!

You have now completed installation of the DUB-E100. Please check the LED indicators on the DUB-E100 which will indicate proper installation. The DUB-E100 features two LED indicators. The Link LED located on the left of the Ethernet port indicates that there is an active connection between the DUB-E100 and the network, and the Tx/Rx LED located on the right of the Ethernet port indicates that data is being transferred.

- The Link LED is green when the DUB-E100 is operating.
- The Tx/Rx (transmitting and receiving) LED flashes green when the DUB-E100 is transmitting or receiving information at 100Mbps.
- The Tx/Rx (transmitting and receiving) LED flashes amber when the DUB-E100 is transmitting or receiving information at 10Mbps.

If both LED's are off, there is no connection. Check the network cables and make sure that there is a physical connection between the DUB-E100, your computer, and your network.

5

Tips

You can verify that the DUB-E100 is installed properly by using the following steps.

- Right click on **My Computer** and select **Properties**.
- Click on the **Hardware** tab, and click on **Device Manager**.
- Click on the plus sign located to the left of **Network Adapters** to expand the selection. **D-Link USB DUB-E100** should appear, indicating proper installation.
- If you have followed the instructions provided in this installation guide and are still having trouble installing the DUB-E100, please refer to the technical support information provided on the next page.

Notes

Technical Support

You can find software updates and user documentation on the D-Link website.

D-Link provides free technical support for customers within the United States and within Canada for the duration of the warranty period on this product.

U.S. and Canadian customers can contact D-Link technical support through our website, or by phone.

Tech Support for customers within the United States:

D-Link Technical Support over the Telephone:

(877) 453-5465

24 hours a day, seven days a week.

D-Link Technical Support over the Internet:

<http://support.dlink.com>

email:support@dlink.com

Tech Support for customers within Canada:

D-Link Technical Support over the Telephone:

(800) 361-5265

Monday to Friday 8:30am to 9:00pm EST

D-Link Technical Support over the Internet:

<http://support.dlink.ca>

email:support@dlink.ca

D-Link[®]
Building Networks for People