



NETGEAR®

Advance Further
Commercial
Products

2015

Table of Contents

Midmarket Solutions	1
Network Solutions for Businesses	5
Commercial Products	
Switches	
ProSAFE® Unmanaged	10
ProSAFE Plus	13
ProSAFE Smart	15
ProSAFE Managed	20
NETGEAR® M6100 Series Chassis Switches	24
ProSAFE Modules & Accessories for Switches	25
Wireless	
ProSAFE Wireless Management Systems	27
ProSAFE Access Points	28
ProSAFE Antennas	30
Security	
VPN Client Software	31
ProSAFE VPN Firewalls	32
Storage	
ReadyNAS® Comparison Chart	36
ReadyDATA®	40
Backup and Recovery	
ReadyRECOVER®	41
Support, Warranties and Management	45



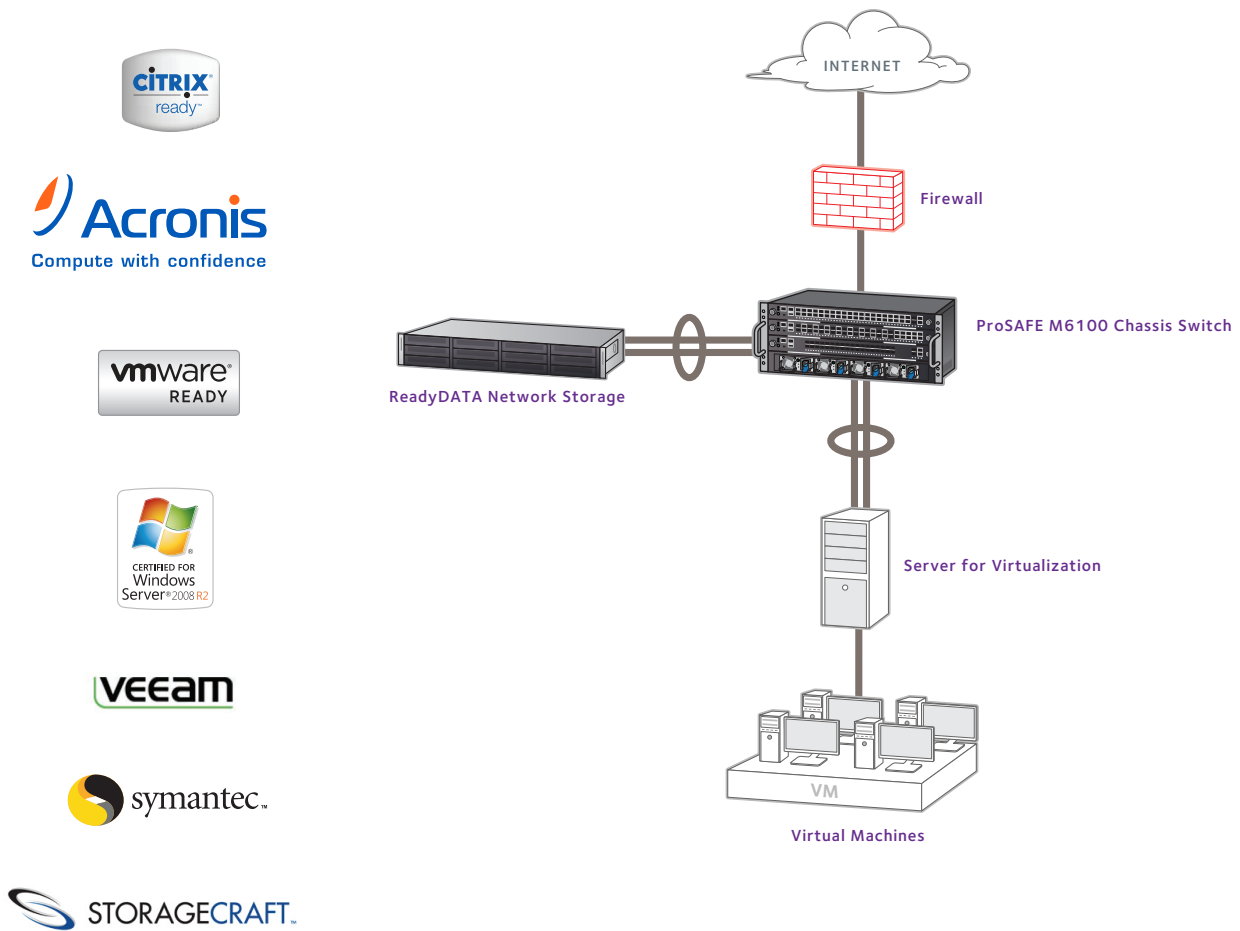
Midmarket Solutions

Virtualisation

Gartner reports that midmarket adoption for Virtualisation is growing even faster than expected. Smart Virtualisation projects can make applications more reliable, leverage existing networks and don't have to cost a fortune.

NETGEAR products can help you build solutions like:

- Primary shared storage platforms in small or remote offices
- Secondary storage for backup and replication in existing Virtualisation environments
- 10GB connectivity with managed or smart switches, stacked for reliability
- Securing physical and virtual machines from network threats
- Next Business Day Service and extended warranties covering all infrastructure components



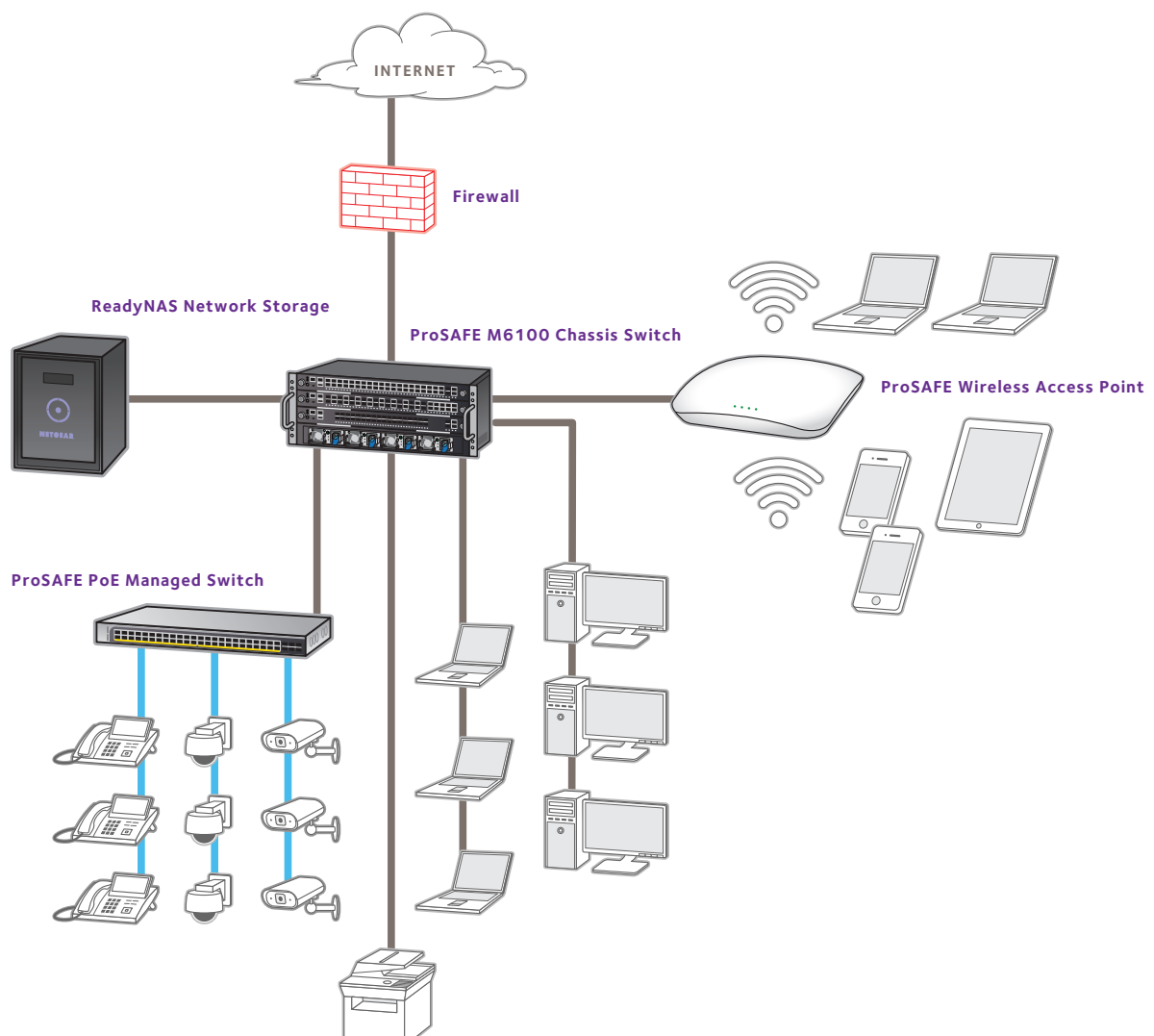
Midmarket Solutions

Cloud Computing

Cloud IT services revenue will quadruple by 2015, and the fastest adopters are small businesses. Smart cloud projects deliver recurring channel partner revenue while cutting customer capital expenses without sacrificing performance or reliability.

NETGEAR products can help you build solutions like:

- Seamless file sharing in or out of the office (hybrid cloud file sharing)
- Offsite replication and disaster recovery services, billed monthly
- Secure connections to the Internet, regardless of provider or content



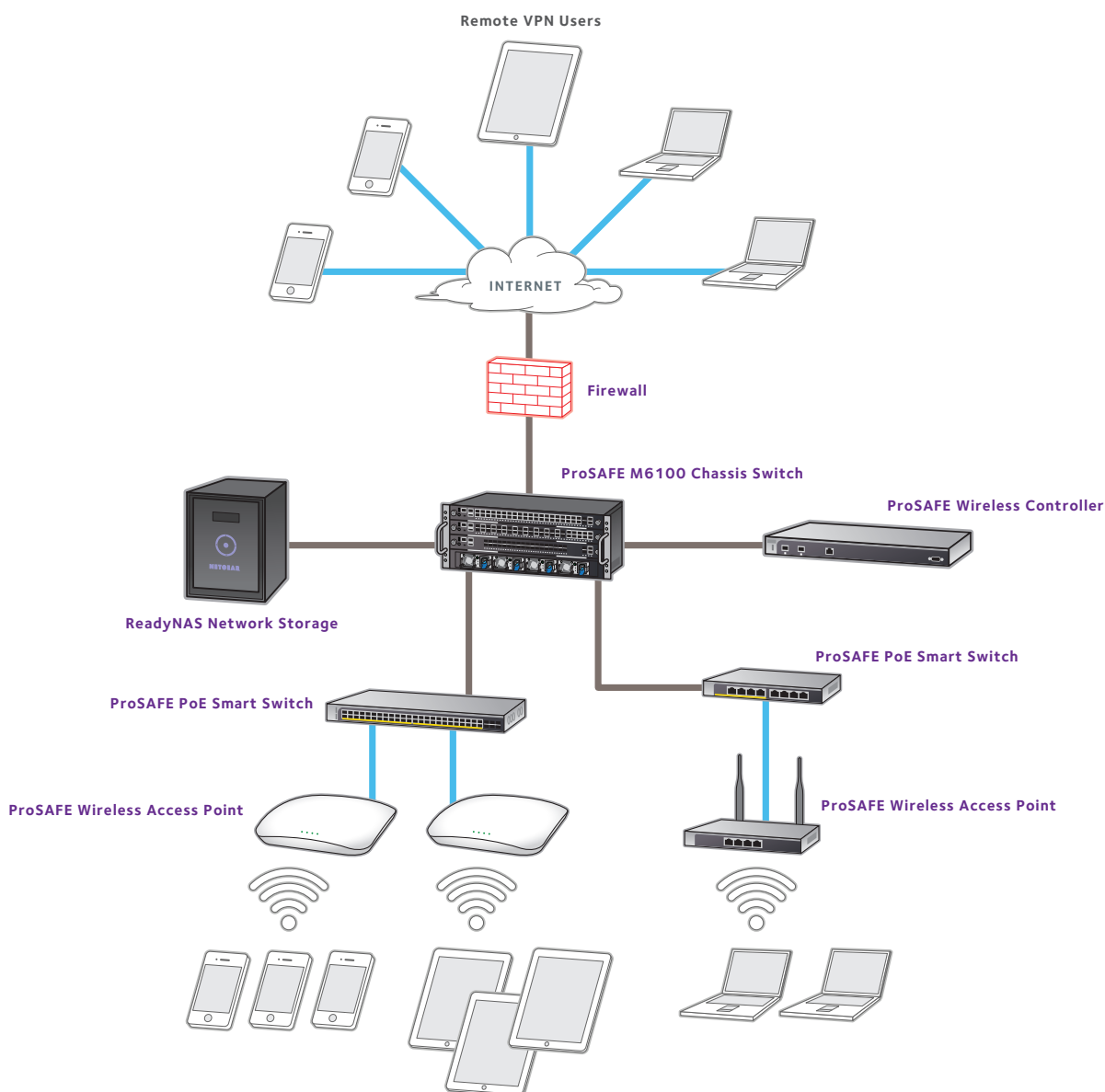
Midmarket Solutions

Mobility

The mobile device revolution is here, and users are demanding access like never before. Our customers tell us that connectivity is the easy part but management is equally important and often overlooked. Smart mobility projects make connectivity and management reliable, affordable and simple.

NETGEAR products can help you build solutions like:

- Resilient wireless networks that can carry converged voice, video and data traffic
- Stand-alone software, management appliances or wireless controller fabrics that scale with customer needs
- Power-over-Ethernet (PoE) switches to power any standard-based PD devices
- Centralised management for access points, controllers and switches
- Next Business Day Service and extended warranties covering all infrastructure components

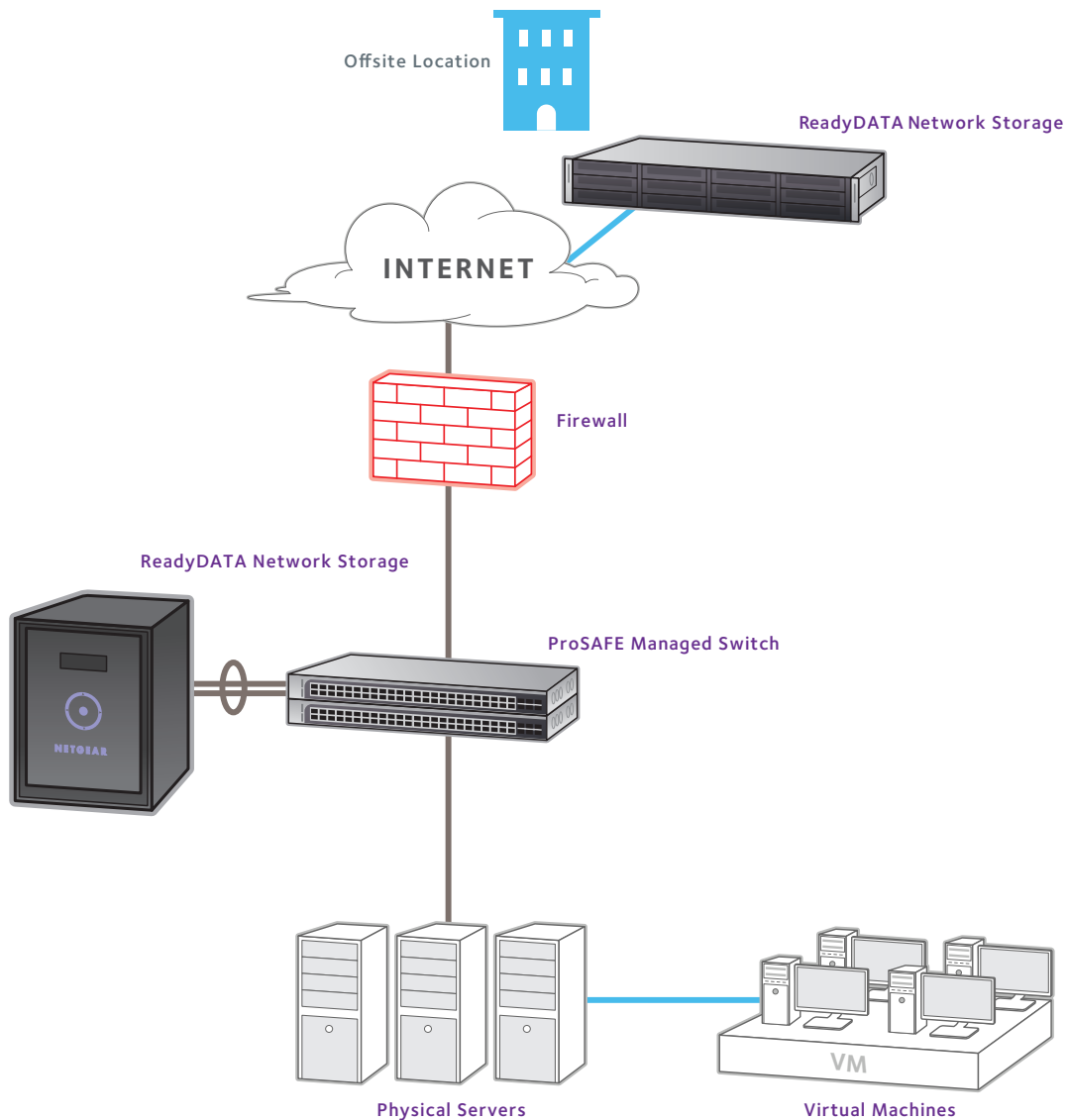


Midmarket Solutions Backup to Disk

Tape based storage solutions are slow to store data, and slow to recover data that's been stored previously. Across the IT landscape, disk storage has steadily replaced tape, as hard-drive capacity grows and prices drop. As disk emerges as the leader in both price and performance, it's time for small and midsize businesses to take advantage of the reliability, performance, and economy of disk-based backup and recovery.

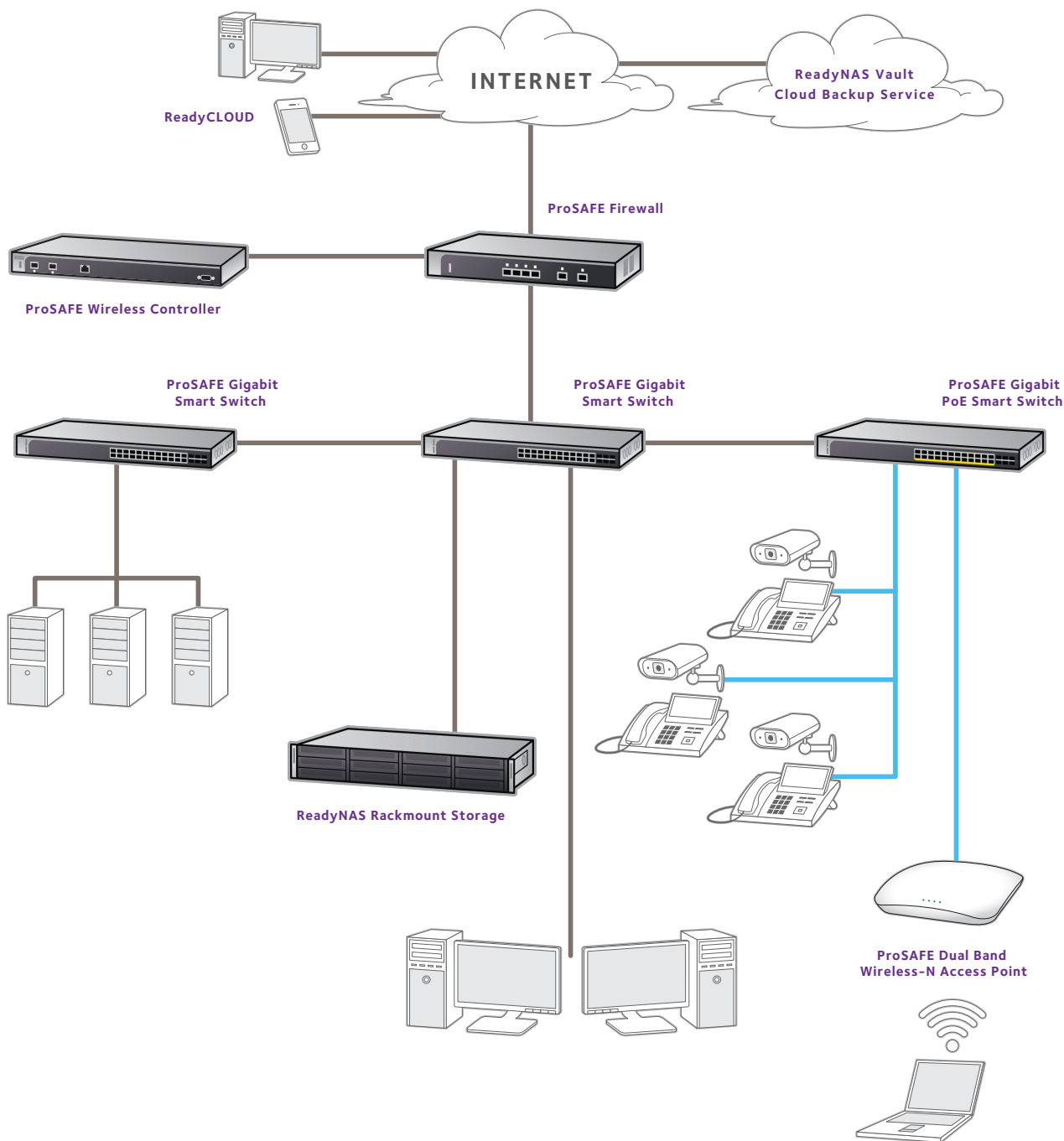
NETGEAR products can help you build solutions like:

- Backups that are significantly more reliable than tape alternatives
- Storage with greater starting capacity and the ability to expand on the fly
- Easy and consistent backup process with virtually no learning curve
- Systems optimised for supporting virtualised environments
- Automated backups that require little on-going management



Network Solution for a Small Business, 5-75 Users

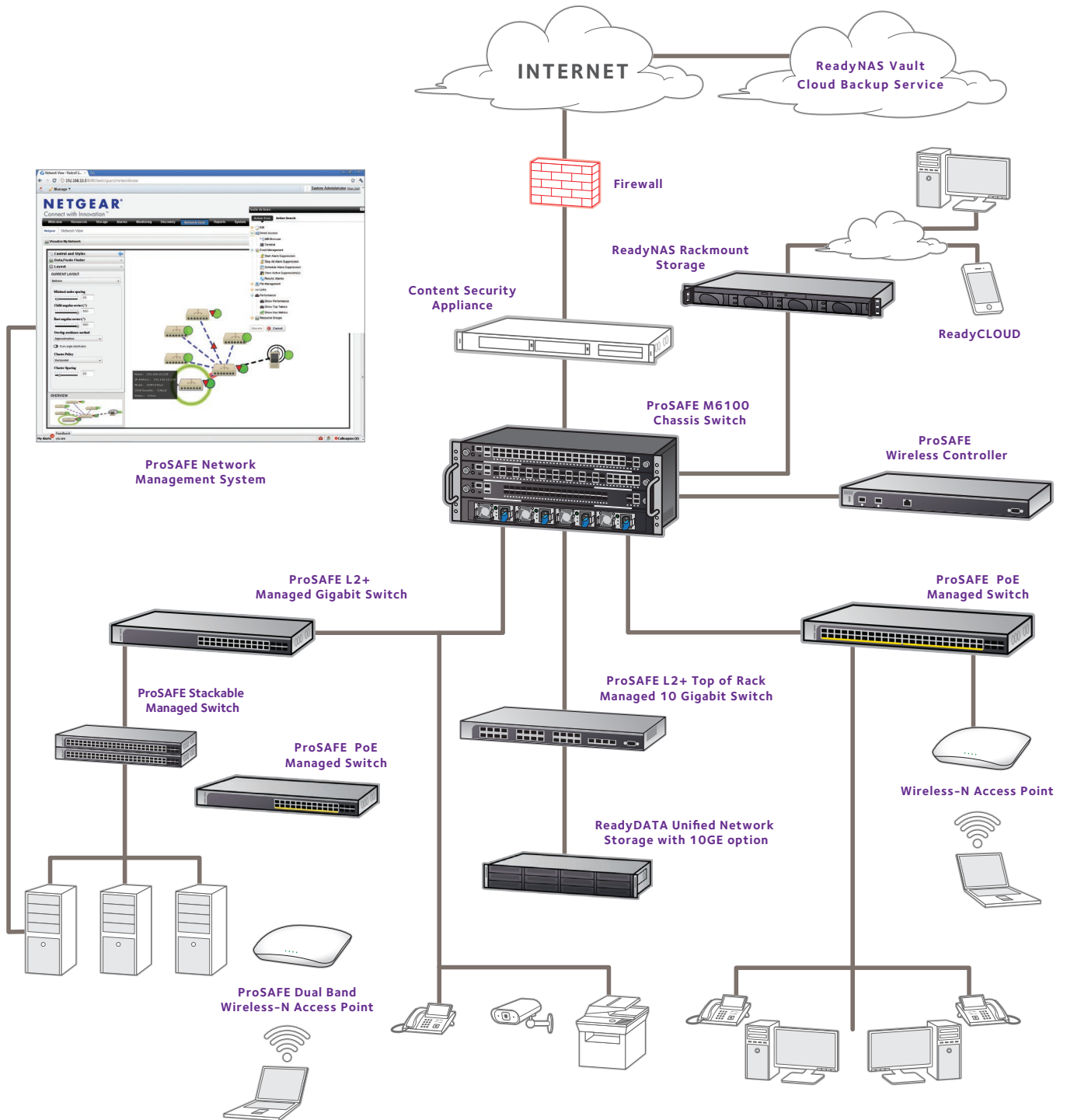
Connection Setup





Network Solution for a Growing Mid-size Business, 75-250 Users

Connection Setup



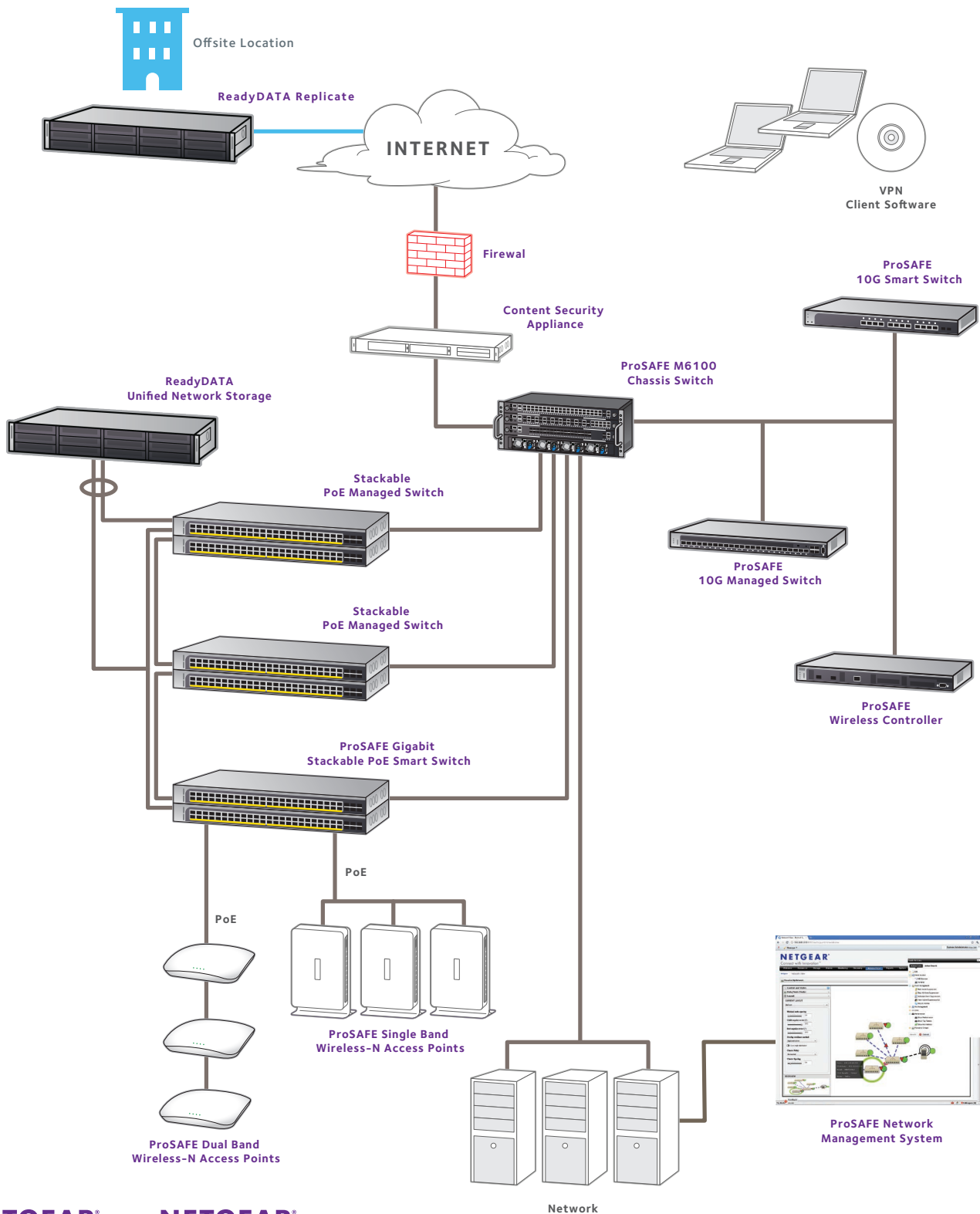
NETGEAR
ProSAFE®

NETGEAR
ReadyNAS®



Network Solution for an Enterprise Business, 250-500+ Users

Connection Setup



NETGEAR
ProSAFE™

NETGEAR
ReadyNAS™

ProSAFE® Switches

NETGEAR® provides a complete line of reliable, affordable networking switches for a wide range of applications. From 5-port desktop units for consumers and small offices, to high-end rackmount managed switches for large organisations and service providers, NETGEAR delivers innovative switching solutions without the cost and complexity of big IT.

Small to medium organisations

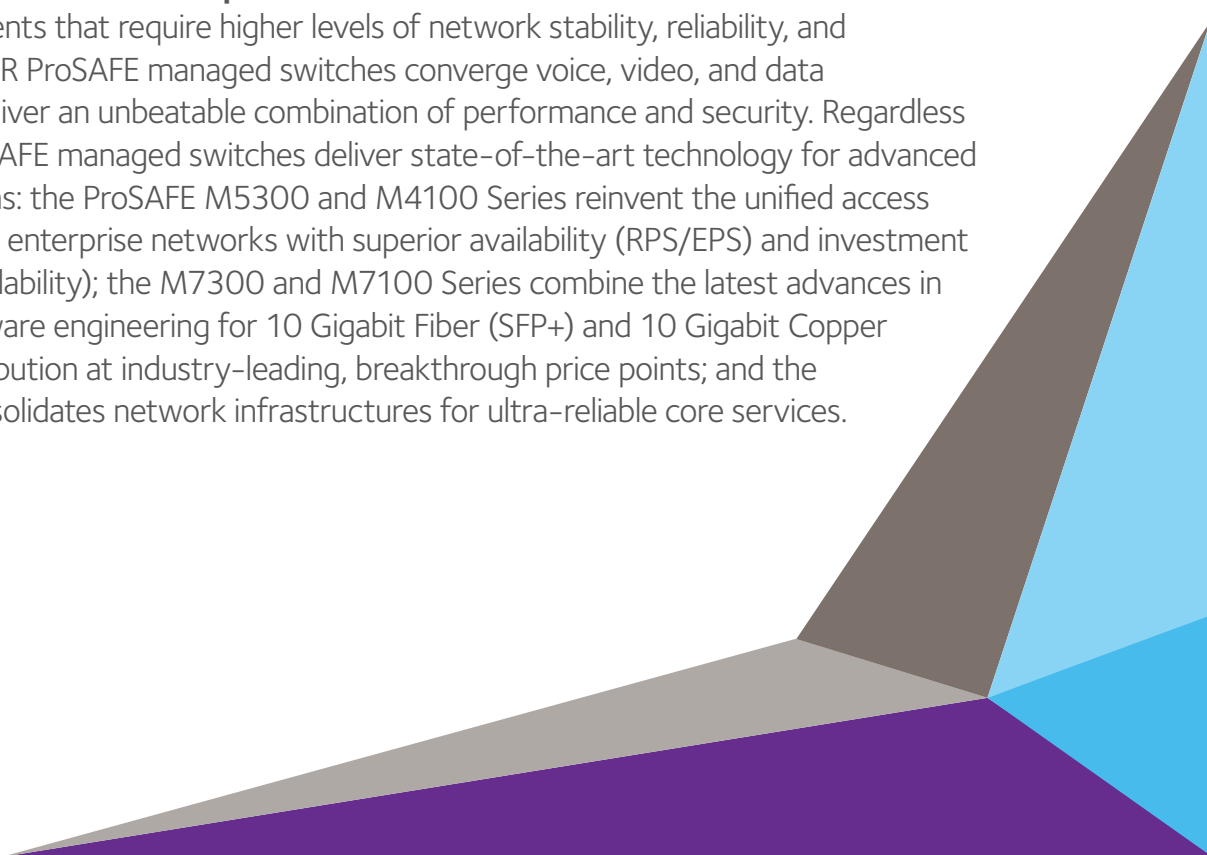
NETGEAR ProSAFE® unmanaged switches provide “plug-and-play” ease of use for instant and reliable network connectivity for small and medium businesses. NETGEAR offers a full range of unmanaged switches for all types of network deployments -- from Fast Ethernet to Gigabit speeds, 5 to 24 ports, and standard power or Power over Ethernet (PoE). All NETGEAR ProSAFE Unmanaged Switches deliver superior quality, high performance, and reliability.

NETGEAR ProSAFE Plus switches deliver the ideal blend of simplicity and ease of use at an affordable price. By adding visibility and control capabilities to the plug-and-play connectivity of our standard unmanaged switches, ProSAFE Plus switches empower small businesses to monitor and configure their network via a web-based management console.

NETGEAR ProSAFE smart switches offer a cost-effective solution for small and medium businesses that require an essential set of network features and web-based management. NETGEAR offers a broad range of ProSAFE Smart switches to support a variety of networking needs, including Fast Ethernet, Gigabit, and 10-Gigabit network deployments, as well as PoE and stacking requirements. ProSAFE Smart Switches are the ideal solution for businesses that are performing network upgrades, bringing network intelligence to the edge, developing VoIP and IP Surveillance, or converging wired and wireless networks.

Large organisations and campus networks

For larger deployments that require higher levels of network stability, reliability, and availability, NETGEAR ProSAFE managed switches converge voice, video, and data networking, and deliver an unbeatable combination of performance and security. Regardless of your needs, ProSAFE managed switches deliver state-of-the-art technology for advanced networking solutions: the ProSAFE M5300 and M4100 Series reinvent the unified access layer in campus and enterprise networks with superior availability (RPS/EPS) and investment protection (PoE scalability); the M7300 and M7100 Series combine the latest advances in hardware and software engineering for 10 Gigabit Fiber (SFP+) and 10 Gigabit Copper (10GBASE-T) distribution at industry-leading, breakthrough price points; and the M8800 Series consolidates network infrastructures for ultra-reliable core services.



Switch Naming Convention

Unmanaged & PLUS Switches – How to read the product code



- Unmanaged & Plus Rackmountable Switches
- Fast Ethernet
- Number of Ports
- PLUS



- Gigabit Ethernet
- Click Switch
- 1 Series Desktop Switches
- Number of Ports
- PoE

Smart Switches – How to read the product code



- Fast Ethernet
- 7 Series Rackmountable Switches
- Number of Ports
- Smart Switches
- PoE



- Gigabit Ethernet
- 7 Series Rackmountable Switches
- Number of Ports
- Smart Switches
- PoE
- Stackable

Fully Managed Switches – How to read the product code



- Gigabit Ethernet
- Fully Managed
- 7 Series Rackmountable Switches
- Layer 3
- Number of Ports
- Stackable



- 10 Gigabit Ethernet
- Fully Managed
- 7 Series Rackmountable Switches
- Layer 2+
- Number of Ports
- Stackable

ProSAFE Switches



MODEL	
Port Configuration	10/100 RJ45 Ports (Auto Uplink) 10/100/1000 RJ45 Ports (Auto Uplink) Fiber Ports 10Gig Module Bays
PoE	Power Over Ethernet 802.3af Ports PoE Plus (30W) 802.3at Ports Total PoE Budget
Stacking	Number of Dedicated Stacking Ports Stacking Bandwidth Stacking (maximum capacity) Stacking Compatibility
Scalability	# MAC Addresses ARP Table – Size of # Routing Entries # ACL Rules
System Management	Single IP Management Web Managed/GUI Command Line Interface/RS232 Console/Telnet SNMP Version RMON Group DHCP (Client/Server) Port Mirroring IPv6 full set
Quality of Service	Number of Priority Queues Traffic Prioritisation Auto Voice VLAN
Multicast Filtering	IGMP Snooping Version IGMP Snooping Querier
Performance	Bandwidth Buffer Memory Jumbo Frames
Availability	Spanning Tree 802.1d/RSTP .1w/MSTP .1s RPS Redundant Power Supply Modular Power Supply
Traffic Management	Number of 802.1q VLAN/Number of VLAN Group Link Agregation 802.3ad/LACP Discovery Protocol LLDP 802.1ab Rate Limiting Broadcast Storm Control
L3 Routing	IPv4 Static Routing IPv4 RIPv1/2, OSPFv1/2, VRRP, EMCP IPv6 Static Routing, IPv6 OSPFv3 IPv4 / IPv6 Multicast Routing PIM-SM/DM
Security	IEEE 802.1x (RADIUS) ACL - Access Control Lists SSL/SSH & HTTPS Guest VLAN DHCP Snooping/IP Source Guard/ARP Guard TACACS+
Energy Efficiency	EEE 802.3az Auto Port Power Down Dynamic Power Consumption Max Power Consumption
Physical	Desktop/Rackmount/Click Metal/Plastic Enclosure MTBF Acoustic Noise at 25°C Fan Width x Depth x Height Weight
Electromagnetic Compliance	Class (A or B)
Warranty Hardware*	
Warranty Power Supply	
Modules	
ProSUPPORT Maintenance PKGS***	On Call 3-year 24 x 7



Unmanaged, L2, 10/100 Fast Ethernet

FS105	FS108	FS108P GREEN	FS116	FS116P GREEN	JFS516 GREEN	JFS524 GREEN
5	8	8	16	16	16	24
		4		8		
		53 Watts		70 Watts		
2,000	2,000	1,000	4,000	4,000	8,000	8,000
		2	2	2	4	4
		Honors 802.1p Priority Tags	Honors 802.1p Priority Tags	Honors 802.1p Priority Tags	Honors 802.1p Priority Tags	Honors 802.1p Priority Tags
1 Gbps	1.6 Gbps	1.6 Gbps	3.2 Gbps	3.2 Gbps	3.2 Gbps	4.8 Gbps
64 KB Per System	96 KB Per System	96 KB Per System	160 KB Per System	160 KB Per System	250 KB Per System	1.25 MB Per System
		Supports		Supports	Supports	Supports
		Supports				
		Based on Cable Length		Based on Cable Length	Based on Cable Length	Based on Cable Length
0.9 Watts	1.0 Watts	Only 3.1 Watts. PoE Delivery-56.1 Watts Max	5.5 Watts	70 Watts	2.7 Watts	4 Watts
D	D	D	D	D	R	R
M	M	M	M	M	M	M
4,262,794 Hours	4,015,496 Hours	927,000 Hours	4,046,880 Hours	2,453,117 Hours	2,956,082 Hours	2,940,540 Hours
94 x 101 x 27 mm (3.7 x 4.0 x 1.1 in.)	158 x 102 x 27 mm (6.2 x 4.1 x 1.1 in.)	235 x 103 x 7mm (9.3 x 4.0 x 1.1 in.)	285 x 102 mm (11.2 x 4.0 x 1.1 in.)	287 x 103 x 27 mm (11.3 x 4.1 x 1.1 in.)	280 x 126 x 44 mm (11.0 x 5.0 x 1.7 in.)	280 x 126 x 44 mm (11.0 x 5.0 x 1.7 in.)
0.26 kg (0.57 lb)	0.49 kg (1.1 lb)	0.39 kg (0.86 lb)	0.80 kg (1.8 lb)	0.9 kg (2.0 lb)	0.92 Kg (2.03 lbs)	1.00 Kg (2.20 lbs)
B	B	B	A	A	A	A
Lifetime	Lifetime	Lifetime	Lifetime	Lifetime	Lifetime	Lifetime
2 Year	2 Year	2 Year	2 Year	2 Year	Lifetime	Lifetime
PMB0331	PMB0331	PMB0331	PMB0331	PMB0331	PMB0331	PMB0331



*Including Lifetime Next Business Day Hardware Replacement (For a list of countries where service is available, and terms and conditions visit <http://nbd.netgear.com>).
 ** Including ProSUPPORT Lifetime 24x7 Advanced Technical Support via chat.
 *** 90-day ProSUPPORT 24x7 Advanced Technical Support via phone can be extended by purchasing one, three, or five year On Call contracts.

ProSAFE Switches



Unmanaged, L2, Gigabit

MODEL	GS105	GREEN GS108	GREEN JGS516	GREEN
Port Configuration	10/100 RJ45 Ports (Auto Uplink)			
	10/100/1000 RJ45 Ports (Auto Uplink)	5	8	16
PoE	Fiber Ports			
	10Gig Module Bays			
	Power Over Ethernet 802.3af Ports			
Stacking	PoE Plus (30W) 802.3at Ports			
	Total PoE Budget			
	Number of Dedicated Stacking Ports			
Scalability	Stacking Bandwidth			
	Stacking (maximum capacity)			
	Stacking Compatibility			
	# MAC Addresses	4,000	4,000	8,000
System Management	ARP Table – Size of			
	# Routing Entries			
	# ACL Rules			
	Single IP Management			
	Web Managed/GUI			
	Command Line Interface/RS232 Console/Telnet			
	SNMP Version			
	RMON Group			
Quality of Service	DHCP (Client/Server)			
	Port Mirroring			
	IPv6 full set			
Multicast Filtering	Number of Priority Queues	4	4	4
	Traffic Prioritisation	Honors 802.1p priority tags	Honors 802.1p priority tags	Honors 802.1p priority tags
	Auto Voice VLAN			
Performance	IGMP Snooping Version			
	IGMP Snooping Querier			
Availability	Bandwidth	10 Gbps	16 Gbps	32 Gbps
	Buffer Memory	128 KB Per System	192 KB Per System	250 KB Per System
	Jumbo Frames	•	•	•
Traffic Management	Spanning Tree 802.1d/RSTP .1w/MSTP .1s			
	RPS Redundant Power Supply			
	Modular Power Supply			
	Number of 802.1q VLAN/Number of VLAN Group			
L3 Routing	Link Agregation 802.3ad/LACP			
	Discovery Protocol LLDP 802.1ab			
	Rate Limiting			
	Broadcast Storm Control			
	IPv4 Static Routing			
Security	IPv4 RIPv1/2, OSPFv1/2, VRRP, EMCP			
	IPv6 Static Routing, IPv6 OSPFv3			
	IPv4 / IPv6 Multicast Routing PIM-SM/DM			
	IEEE 802.1x (RADIUS)			
	ACL – Access Control Lists			
	SSL/SSH & HTTPS			
Energy Efficiency	Guest VLAN			
	DHCP Snooping/IP Source Guard/ARP Guard			
	TACACS+			
	EEE 802.3az	Supports	Supports	Supports
Physical	Auto Port Power Down	•	•	•
	Dynamic Power Consumption		•	•
	Max Power Consumption	3.67 Watts	4.86 Watts	11.8 Watts
	Desktop/Rackmount/Click	D	D	R
	Metal/Plastic Enclosure	M	M	M
	MTBF	8,815,772 Hours	1,044,500 Hours	441,123 Hours
	Acoustic Noise at 25°C			
Electromagnetic Compliance	Fan			
	Width x Depth x Height	99 x 102 x 27 mm (3.7 x 4.1 x 1.1 in.)	158 x 101 x 27 (6.2 x 4.0 x 1.1 in.)	328 x 169 x 43 mm (12.9 x 6.7 x 1.7 in.)
	Weight	0.264 kg (0.58 lb)	0.52 kg (1.15 lb)	1.47 kg (3.57 lb)
Warranty Hardware*	Class (A or B)	A	B	A
Warranty Power Supply	Lifetime	Lifetime	Lifetime	Lifetime
Modules	2 Year	2 Year	Lifetime	
ProSUPPORT Maintenance PKGS***	On Call 3-year 24 x 7	PMB0331	PMB0331	PMB0331





	ProSAFE plus, L2, Gigabit				
JGS524	GS105EV2	GS105PE	GS108EV3	GSS108E NEW GREEN	GS108PEV3
24	5	5	8	8	8
					4
					45W
8,000	8,000	8,000	4,000	8,000	4,000
	•	•		•	
	DHCP Client Many-to-One	DHCP Client Many-to-One	DHCP Client Many-to-One	DHCP Client Many-to-One	DHCP Client Many-to-One
4	4	4	4	4	4
Honors 802.1p priority tags	802.1p, Port-based and DSCP	802.1p, Port-based and DSCP	802.1p, Port-based	802.1p, Port-based	802.1p, Port-based
	v1, v2 and v3	v1, v2 and v3	v1, v2 and v3	v1, v2 and v3	v1, v2 and v3
48 Gbps	10 Gbps	10 Gbps	16 Gbps	16 Gbps	16 Gbps
250 KB Per System	128 KB	128 KB	192 KB	2 Mb	192 KB
•	•	•	•	•	•
	64	64	32	64	32
	•	•	•	•	•
	•	•	•	•	•
Supports	•	•	Supports	Supports	Supports
•	•	•	•	•	•
•	•	•	•	•	•
17.9 Watts	4 Watts	Via PD	4 Watts	20.1 Watts	51.1 Watts
R	D	D	D	C	D
M	M	M	M	P	M
238,832 Hours	5,905,968 Hours		5,701,574 Hours	1,031,177 Hours	3,649,507 Hours
	0 dBA	0 dBA	0		0
			0		0
328 x 169 x 43 mm (12.9 x 8.2 x 1.7 in.)	94 x 104 x 28 mm (3.7 x 3.98 x 1.02 in.)	158 x 105 x 27mm (6.22 x 4.13x 1.06 in.)	158 x 105 x 27 (6.2 x 4.0 x 1.1 in.)	305x 65x 35 mm (12.0 x 2.6 x 1.4 in)	235 x 103 x 27 mm (9.25 x 4.06 x 1.06 in)
1.65 kg (3.64 lb)	0.27 kg (0.60 lb)	0.45 kg (0.99 lb)	0.55 kg (1.2 lbs)	0.4 kg (0.88 lbs)	0.726 kg (1.6 lbs)
A	B	B	B	B	A
Lifetime	Lifetime	Lifetime	Lifetime	Lifetime	Lifetime
Lifetime	2 Year	2 Year	2 Year	Lifetime	2 Year
PMB0331	PMB0331	PMB0331	PMB0331	PMB0331	PMB0331

*Including Lifetime Next Business Day Hardware Replacement (For a list of countries where service is available, and terms and conditions visit <http://nbd.netgear.com>).

** Including ProSUPPORT Lifetime 24x7 Advanced Technical Support via chat.

*** 90-day ProSUPPORT 24x7 Advanced Technical Support via phone can be extended by purchasing one, three, or five year On Call contracts.

ProSAFE Switches



ProSAFE plus, L2, Gigabit

MODEL		GS116E GREEN	GSS116E NEW GREEN	JGS516PE	JGS524E GREEN	
Port Configuration	10/100 RJ45 Ports (Auto Uplink)					
	10/100/1000 RJ45 Ports (Auto Uplink)	16	16	16	24	
	Fiber Ports					
	10Gig Module Bays					
PoE	Power Over Ethernet 802.3af Ports			8		
	PoE Plus (30W) 802.3at Ports					
	Total PoE Budget			85W		
Stacking	Number of Dedicated Stacking Ports					
	Stacking Bandwidth					
	Stacking (maximum capacity)					
	Stacking Compatibility					
Scalability	# MAC Addresses	16,000	8,000	16,000	16,000	
	ARP Table – Size of					
	# Routing Entries					
	# ACL Rules					
System Management	Single IP Management					
	Web Managed/GUI			•	•	
	Command Line Interface/RS232 Console/Telnet					
	SNMP Version					
	RMON Group					
	DHCP (Client/Server)	DHCP Client	DHCP Client	DHCP Client	DHCP Client	
	Port Mirroring	Many-to-One	Many-to-One	Many-to-One	Many-to-One	
	IPv6 full set					
	Quality of Service	Number of Priority Queues	4	4	4	4
		Traffic Prioritisation	802.1p, Port-based	802.1p, Port-based	802.1p, Port-based	802.1p, Port-based
Auto Voice VLAN						
Multicast Filtering	IGMP Snooping Version	v1, v2 and v3	v1, v2 and v3	v1, v2 and v3	v1, v2 and v3	
	IGMP Snooping Querier			•	•	
Performance	Bandwidth	32 Gbps	32 Gbps	32 Gbps	48 Gbps	
	Buffer Memory	6 MB Per System	512 KB	768 KB Per System	768 KB Per System	
	Jumbo Frames	•	•	•	•	
Availability	Spanning Tree 802.1d/RSTP .1w/MSTP .1s					
	RPS Redundant Power Supply					
	Modular Power Supply					
Traffic Management	Number of 802.1q VLAN/Number of VLAN Group	100	128	100	100	
	Link Agregation 802.3ad/LACP		Static LAG		Static LAG	
	Discovery Protocol LLDP 802.1ab					
	Rate Limiting	•	•	•	•	
	Broadcast Storm Control	•	•	•	•	
L3 Routing	IPv4 Static Routing					
	IPv4 RIPv1/2, OSPFv1/2, VRRP, EMCP					
	IPv6 Static Routing, IPv6 OSPFv3					
	IPv4 / IPv6 Multicast Routing PIM-SM/DM					
Security	IEEE 802.1x (RADIUS)					
	ACL - Access Control Lists					
	SSL/SSH & HTTPS					
	Guest VLAN					
	DHCP Snooping/IP Source Guard/ARP Guard					
	TACACS+					
Energy Efficiency	EEE 802.3az	•	Supports	•	•	
	Auto Port Power Down	•	•	•	•	
	Dynamic Power Consumption	•	•	•	•	
	Max Power Consumption	10 Watts	8.4 Watts	110 Watts	13.8 Watts	
Physical	Desktop/Rackmount/Click	D	C	R	R	
	Metal/Plastic Enclosure	M	M	M	M	
	MTBF	504,993 Hours	721,497 Hours	840,354 Hours	243,476 Hours	
	Acoustic Noise at 25°C	0	0	24.5 dBA	0	
	Fan	0	0	1	0	
	Width x Depth x Height	286 x 101 x 26 mm (11.26 x 3.98 x 1.02 in)	407x70x35 mm (16.0 x 2.8 x 1.4 in)	328 x 169 x 43 mm (12.9 x 6.65 x 1.7 in)	328 x 170 x 43 mm (12.9 x 6.9 x 1.7 in)	
	Weight	0.84 kg (1.85 lb)	1.3 kg (2.87 lb)	1.67 kg (3.68 lb)	1.4 kg (3.09 lb)	
Electromagnetic Compliance	Class (A or B)	A	B	A	A	
Warranty Hardware*		Lifetime	Lifetime	Lifetime	Lifetime	
Warranty Power Supply		2 Year	Lifetime	Lifetime	Lifetime	
Modules						
ProSUPPORT Maintenance PKGS***	On Call 3-year 24 x 7	PMB0331	PMB0331	PMB0331	PMB0331	





	ProSAFE plus, L2, 10 GIGABIT	Smart Managed, L2, 10/100 Fast Ethernet				
JG5524PE	XS708E	FS526T	FS728TLP	FS728TP	GREEN	FS750T2
24	8 10GBase-T 1 Combo SFP+ (10G)	24 2	24 4	24 4		48 2
12			12	24		
100W			100 Watts	192 Watts		
16,000	32,000	8,000	8,000	4,000		8,000
		128	128	128		
		•	•	•		•
		v1, v2c, v3 1,2,3,9	v1, v2c, v3 1,2,3,9	v1, v2c, v3 1,2,3,9		v1, v2c
DHCP Client	Client	Client	Client	Client		Client
Many-to-One	Many-to-One	Many-to-One	Many-to-One	Many-to-One		Many-to-One
4	4	8	8	4		4
802.1p, Port-based	802.1p, Port-Based	802.1p and DSCP •	802.1p and DSCP •	802.1p, DSCP, Diffserv •		802.1p
v1, v2 and v3 •	v1, v2 and v3	v1, v2, v3 •	v1, v2, v3 •	v1, v2, v3 •		
48 Gbps	160 Gbps	8.8 Gbps	12.8 Gbps	12.8 Gbps		13.6 Gbps
768 KB Per System •	16 MB Per System •	4 MB Per System •	4 MB Per System •	1 MB Per System •		256 KB Per System
		802.1d, .1w, .1s	802.1d, .1w, .1s	802.1d, .1w, .1s		80.2.1d
100	64	128	128	128		64
Static LAG	Static LAG	•	•	•		•
•	•	•	•	•		
•	•	•	•	•		
		Supports MAC, IP	Supports MAC, IP	Supports MAC, IP		
		•	•	•		
		•	•	•		
		•	•	•		
123 Watts	58.8 Watts	12 Watts	124 Watts	256 Watts		19.65 Watts
R	R	R	R	R		R
M	M	M	M	M		M
643,506 Hours	221,813 Hours	334,168 Hours	755,725 Hours	237,497 Hours		59,880 Hours
24.4 dBA	34.7dBA	0 dBA	30.7 dBA	38.1 dBA		0 dBA
1	2					
328 x 169 x 43 mm (12.9 x 6.65 x 1.7 in)	330 x 207 x 43 mm (13 x 8.2 x 1.7 in)	326 x 168 x 43 mm (12.83 x 6.61 x 1.7 in)	440 x 204 43 mm (17.3 x 8 x 1.7 in)	440 x 257 x 43 mm (17.3 x 10.1 x 1.7 in)		440 x 205 x 43 mm (17.3 x 8.1 x 1.7 in)
1.84 kg (4.06 lb)	3.6 kg (6.5 lb)	1.35 kg (2.98 lb)	2.92 kg (6.44 lb)	3.6 kg (7.92 lb)		3.2 kg (7.0 lb)
A	A	A	A	A		A
Lifetime	Lifetime	Lifetime	Lifetime	Lifetime		Lifetime
Lifetime	Lifetime	Lifetime	Lifetime	Lifetime		Lifetime
	AGM731F/AGM732F; AXM761/ AXM762/AXM763		AGM731F/732F	AGM731F/732F		AGM731F/732F
PMB0331	PMB0331	PMB0331	PMB0332	PMB0332		PMB0331

*Including Lifetime Next Business Day Hardware Replacement (For a list of countries where service is available, and terms and conditions visit <http://nbd.netgear.com>).

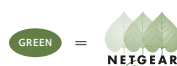
** Including ProSUPPORT Lifetime 24x7 Advanced Technical Support via chat.

*** 90-day ProSUPPORT 24x7 Advanced Technical Support via phone can be extended by purchasing one, three, or five year On Call contracts.

ProSAFE Switches



		Smart Managed, L2, Gigabit				
MODEL		GS10BT	GREEN GS110TP	GREEN GS510TP	GREEN GS716T	GREEN
Port Configuration	10/100 RJ45 Ports (Auto Uplink)					
	10/100/1000 RJ45 Ports (Auto Uplink)	8	8	8	16	
	Fiber Ports		2 SFP		2 dedicated SFP	
	10Gig Module Bays					
PoE	Power Over Ethernet 802.3af Ports		8	8		
	PoE Plus (30W) 802.3at Ports					
	Total PoE Budget		46 Watts	130 Watts		
Stacking	Number of Dedicated Stacking Ports					
	Stacking Bandwidth					
	Stacking (maximum capacity)					
	Stacking Compatibility					
Scalability	# MAC Addresses	8,000	8,000	4,000	16,000	
	ARP Table – Size of				512	
	# Routing Entries				32	
	# ACL Rules	64	64	128	100	
System Management	Single IP Management					
	Web Managed/GUI	•	•	•	•	
	Command Line Interface/RS232 Console/Telnet					
	SNMP Version	v1, v2c, v3	v1, v2c, v3	v1, v2c, v3	v1, v2c, v3	
	RMON Group	1,2,3,9	1,2,3,9	1,2,3,9	1,2,3,9	
	DHCP (Client/Server)	Client	Client	Client	Client	
	Port Mirroring	Many-to-One	Many-to-One	Many-to-One	Many-to-One	
	IPv6 full set					•
Quality of Service	Number of Priority Queues	4	4	4	8	
	Traffic Prioritisation	802.1p, DSCP, Diffserv	802.1p, DSCP, Diffserv	802.1p, DSCP, Diffserv	802.1p, DSCP, Diffserv	
	Auto Voice VLAN	•	•	•	•	
Multicast Filtering	IGMP Snooping Version	v1, v2, v3	v1, v2, v3	v1, v2, v3	v1, v2, v3	
	IGMP Snooping Querier					•
Performance	Bandwidth	16 Gbps	16 Gbps	20 Gbps	32 Gbps	
	Buffer Memory	512 KB Per Unit	512 KB Per Unit	512 KB Per Unit	2 MB Per System	
	Jumbo Frames	Yes	Yes	•	•	
Availability	Spanning Tree 802.1d/RSTP .1w/MSTP .1s	802.1d, .1w, .1s	802.1d, .1w, .1s	802.1d, .1w, .1s	802.1d, .1w, .1s	
	RPS Redundant Power Supply					
	Modular Power Supply					
Traffic Management	Number of 802.1q VLAN/Number of VLAN Group	64	64	64	256	
	Link Agregation 802.3ad/LACP	•	•	•	•	
	Discovery Protocol LLDP 802.1ab	•	•	•	•	
	Rate Limiting	•	•	•	•	
	Broadcast Storm Control	•	•	•	•	
L3 Routing	IPv4 Static Routing					•
	IPv4 RIPv1/2, OSPFv1/2, VRRP, EMCP					
	IPv6 Static Routing, IPv6 OSPFv3					
	IPv4 / IPv6 Multicast Routing PIM-SM/DM					
Security	IEEE 802.1x (RADIUS)	•	•	•	•	
	ACL – Access Control Lists	MAC, IP	MAC, IP	MAC, IP	MAC, IP	
	SSL/SSH & HTTPS	HTTPS	HTTPS	HTTPS	SSL/HTTPS	
	Guest VLAN	•	•	•	•	
	DHCP Snooping/IP Source Guard/ARP Guard					•
	TACACS+	•	•	•	•	
Energy Efficiency	EEE 802.3az					•
	Auto Port Power Down	•	•	•	•	
	Dynamic Power Consumption	•	•	•	•	
	Max Power Consumption	12.78 Watts if powered by PoE via port 18.3 Watts (AC) 6 Watts (DC)	60 Watts	147 Watts	14.4 Watts	
Physical	Desktop/Rackmount/Click	D	D	D	R	
	Metal/Plastic Enclosure	M	M	M	M	
	MTBF	275,533 Hours	157,004 Hours	458,124 Hours	726,612 hours	
	Acoustic Noise at 25°C	0 dBA	0 dBA	<38 dBA	0 dBA	
	Fan			•		
	Width x Depth x Height	158 x 105 x 27 mm (6.22 x 4.13 x 1.06 in)	236 x 101.6 x 27 mm (9.3 x 4 x 1.06 in)	328 x 169 x 43 mm (9.3 x 4 x 1.06 in)	43 x 440 x 204 mm (1.7 x 17.3 x 8 in)	
	Weight	0.56 kg (1.23 lb)	0.7kg (1.54 lb)	1.68kg (3.7 lb)	2.72 kg (5.99 lb)	
Electromagnetic Compliance	Class (A or B)	A	B	A	A	
Warranty Hardware*	Lifetime	Lifetime	Lifetime	Lifetime	Lifetime	
Warranty Power Supply	Lifetime	Lifetime	Lifetime	Lifetime	Lifetime	
Modules			AGM731F/732F	AGM731F/732F	AGM731F/732F	
ProSUPPORT Maintenance PKGS***	On Call 3-year 24 x 7	PMB0331	PMB0331	PMB0331	PMB0331	





GS516TP	GS724T	GREEN GS748T	GS728TP	GREEN GS728TPP	GREEN GS752TP
16	24	48	24	24	48
	2 dedicated SFP	2 dedicated and 2 combo SFP	4 dedicated SFP	4 dedicated SFP	4 dedicated SFP
8 POE and 2 PD			24	24	48
			8	24	8
76w with AC power, up to 22w with PD power			192 Watts	384 Watts	384 Watts
8,000	16,000	16,000	8,000	8,000	8,000
1,024	512	512	1,024	1,024	1,024
	32	32	32	32	32
400	100	100	400	400	400
•	•	•	•	•	•
v1, v2c, v3	v1, v2c, v3	v1, v2c, v3	v1, v2c, v3	v1, v2c, v3	v1, v2c, v3
1,2,3,9	1,2,3,9	1,2,3,9	1,2,3,9	1,2,3,9	1,2,3,9
Client	Client	Client	Client	Client	Client
Many-to-One	Many-to-One	Many-to-One	Many-to-One	Many-to-One	Many-to-One
•	•	•	•	•	•
4	8	8	4	4	4
802.1p, DSCP, Diffserv	802.1p, DSCP, Diffserv	802.1p, DSCP, Diffserv	802.1p; Diffserv; TCP/UDP	802.1p; Diffserv; TCP/UDP	802.1p; Diffserv; TCP/UDP
•	•	•	•	•	•
v1, v2, v3	v1, v2, v3	v1, v2, v3	v1, v2, v3	v1, v2, v3	v1, v2, v3
•	•	•	•	•	•
48 Gbps	48 Gbps	100 Gbps	48 Gbps	56 Gbps	104 Gbps
8 MB Per System	2 MB Per System	2 MB Per System	8 MB Per System	8 MB Per System	8 MB Per System
•	•	•	•	•	•
802.1d, .1w, .1s	802.1d, .1w, .1s	802.1d, .1w, .1s	802.1d, .1w, .1s	802.1d, .1w, .1s	802.1d, .1w, .1s
256	256	256	256	256	256
•	•	•	•	•	•
•	•	•	•	•	•
•	•	•	•	•	•
•	•	•	•	•	•
•	•	•	•	•	•
•	•	•	•	•	•
MAC, IP	MAC, IP	MAC, IP	MAC, IP	MAC, IP	MAC, IP
HTTPS	SSL/HTTPS	SSL/HTTPS	HTTPS	HTTPS	HTTPS
•	•	•	•	•	•
•	•	•	DHCP Snooping Only	DHCP Snooping Only	DHCP Snooping Only
•	•	•	•	•	•
•	•	•	•	•	•
•	•	•	•	•	•
•	•	•	•	•	•
92.1 Watts	17.4 Watts	41.1 Watts	264 Watts	483.5 Watts	512.8 Watts
R	R	R	R	R	R
M	M	M	M	M	M
479,350 Hours	567,680 hours	390,728 Hours	345,901 Hours	247,163 Hours	220,447 Hours
24.6 dBA	0 dBA	37.2 dBA	31.8 dBA	31.8 dBA	44.9 dBA
•	•	•	•	•	•
328 x 169 x 43 mm (12.9 x 6.65 x 1.7 in)	43 x 440 x 204 mm (1.7 x 17.3 x 8 in)	440 x 257 x 43 mm (1.7 x 17.3 x 10.1 in)	440 x 257 x 43 mm (17.3 x 10.1 x 1.7 in)	440 x 257 x 43 mm (17.3 x 10.1 x 1.7 in)	440 x 316 x 43 mm (17.3 x 15.2 x 1.7 in)
2.21 kg (4.87lb)	2.87 kg (6.33 lb)	3.46 kg/7.63 lb	3.7 kg (8.1 lb)	4.4 kg (8.1 lb)	5.1 kg (14.5 lb)
A	A	A	A	A	A
Lifetime	Lifetime	Lifetime	Lifetime	Lifetime	Lifetime
Lifetime	Lifetime	Lifetime	Lifetime	Lifetime	Lifetime
	AGM731F/732F	AGM731F/732F	AGM731F/732F	AGM731F/732F	AGM731F/732F
PMB0332	PMB0331	PMB0331	PMB0332	PMB0332	PMB0332

*Including Lifetime Next Business Day Hardware Replacement (For a list of countries where service is available, and terms and conditions visit <http://nbd.netgear.com>).

** Including ProSUPPORT Lifetime 24x7 Advanced Technical Support via chat.

*** 90-day ProSUPPORT 24x7 Advanced Technical Support via phone can be extended by purchasing one, three, or five year On Call contracts.

ProSAFE Switches



Smart Managed, L2, Gigabit

MODEL	GS752T5B	GS752T5B	GS752T5B	GS752T5B	S3300-28X (GS728TX)	S3300-28X (GS728TX)	S3300-52X (GS752TX)	S3300-52X (GS752TX)	S3300-52X (GS752TX)
Port Configuration	10/100 RJ45 Ports (Auto Uplink)								
	10/100/1000 RJ45 Ports (Auto Uplink)	48	48		24 / 2 10GBase-T		48 / 2 10GBase-T		
	Fiber Ports	4 SFP	4 SFP		2 SFP+ (10G)		2 SFP+ (10G)		
	10Gig Module Bays								
PoE	Power Over Ethernet 802.3af Ports		48						
	PoE Plus (30W) 802.3at Ports		8						
	Total PoE Budget		384 Watts						
Stacking	Number of Dedicated Stacking Ports	2 SFP (2.5G)	2 SFP (2.5G)		2		2		
	Stacking Bandwidth	10 Gbps	10 Gbps		40 Gbps		40 Gbps		
	Stacking (maximum capacity)	6 units or 300 ports	6 units or 300 ports		6 units or 300 ports		6 units or 300 ports		
	Stacking Compatibility	GS7XXTSB/GSXXTPSB	GS7XXTSB/GSXXTPSB		S3300 series		S3300 series		
Scalability	# MAC Addresses	16,000	16,000		16,000		16,000		
	ARP Table – Size of	1,024	1,024		512		512		
	# Routing Entries	32	32		32		32		
	# ACL Rules	256	256		480		480		
System Management	Single IP Management	•	•		•		•		
	Web Managed/GUI	•	•		•		•		
	Command Line Interface/RS232 Console/Telnet								
	SNMP Version	v1, v2c, v3	v1, v2c, v3		v1, v2c, v3		v1, v2c, v3		
	RMON Group	1,2,3,9	1,2,3,9		1,2,3,9		1,2,3,9		
	DHCP (Client/Server)	Client	Client		Client/Server		Client/Server		
	Port Mirroring	Many-to-One	Many-to-One		Many-to-One		Many-to-One		
	IPv6 full set	•	•		•		•		
Quality of Service	Number of Priority Queues	8	8		8		8		
	Traffic Prioritisation	802.1p	802.1p, DSCP		802.1p; Diffserv; TCP/UDP		802.1p; Diffserv; TCP/UDP		
	Auto Voice VLAN	•	•		•		•		
Multicast Filtering	IGMP Snooping Version	v1, v2, v3	v1, v2, v3		v1, v2, v3		v1, v2, v3		
	IGMP Snooping Querier	•	•		•		•		
Performance	Bandwidth	104 Gbps	104 Gbps		128 Gbps		176 Gbps		
	Buffer Memory	16 MB Per System	2 MB Per System		2 MB Per System		2 MB Per System		
	Jumbo Frames	•	•		•		•		
Availability	Spanning Tree 802.1d/RSTP .1w/MSTP .1s	802.1d, .1w, .1s	802.1d, .1w, .1s		802.1d, .1w, .1s		802.1d, .1w, .1s		
	RPS Redundant Power Supply								
	Modular Power Supply								
Traffic Management	Number of 802.1q VLAN/Number of VLAN Group	256	256		256		256		
	Link Agregation 802.3ad/LACP	•	•		•		•		
	Discovery Protocol LLDP 802.1ab	•	•		•		•		
	Rate Limiting	•	•		•		•		
	Broadcast Storm Control	•	•		•		•		
L3 Routing	IPv4 Static Routing	•	•		•		•		
	IPv4 RIPv1/2, OSPFv1/2, VRRP, EMCP								
	IPv6 Static Routing, IPv6 OSPFv3								
	IPv4 / IPv6 Multicast Routing PIM-SM/DM								
Security	IEEE 802.1x (RADIUS)	•	•		•		•		
	ACL – Access Control Lists	MAC, IP	MAC, IP		MAC, IP, TCP		MAC, IP, TCP		
	SSL/SSH & HTTPS	HTTPS	HTTPS		HTTPS		HTTPS		
	Guest VLAN	•	•		•		•		
	DHCP Snooping	•	•		•		•		
	TACACS+	•	•		•		•		
Energy Efficiency	EEE 802.3az								
	Auto Port Power Down	•	•		•		•		
	Dynamic Power Consumption	•	•		•		•		
	Max Power Consumption	77 Watts	527 Watts		28.18 Watts		748.18 Watts		
Physical	Desktop/Rackmount/Click	R	R		R		R		
	Metal/Plastic Enclosure	M	M		M		M		
	MTBF	303,219 Hours	206,539 Hours		278,559 hours		147,965 hours		
	Acoustic Noise at 25°C	34.8 dBA	42.7 dBA		40 dBA		39 dBA		
	Fan	•	•		•		•		
	Width x Depth x Height	440 x 257 x 43 mm (17.3 x 11.8 x 1.7 in)	440 x 310 x 43 mm (17.3 x 17.0 x 1.7 in)		440 x 257 x 43 mm (17.32 x 10.13 x 1.7 in)		440 x 257 x 43 mm (17.32 x 10.13 x 1.7 in)		
	Weight	4.31 kg (11.38 lb)	5.48 kg (16.02 lb)		3.55 kg (7.8 lb)		3.67 kg (8.1 lb)		
Electromagnetic Compliance	Class (A or B)	A	A		A		A		
Warranty Hardware*	Lifetime	Lifetime		Lifetime		Lifetime			
Warranty Power Supply	Lifetime	Lifetime		Lifetime		Lifetime			
Modules	AGM731F/732F/AGC761	AGM731F/732F		AGM731F/AGM732F; AXM761/AXM762/AXM763 /AXC761/AXC763		AGM731F/AGM732F; AXM761/AXM762/AXM763 /AXC761/AXC763; RPS4000 (RPS only)			
ProSUPPORT Maintenance PKGS***	On Call 3-year 24 x 7	PMB0331	PMB0332		PMB0332		PMB0332		





S3300-28X-POE+ (GS728TXP) GREEN NEW	S3300-52X-POE+ (GS752TXP) GREEN NEW	GS752TXS GREEN	Smart Managed, L2, 10 Gigabit GREEN	XS712T GREEN	Fully Managed, M4100 series (L2+ with static routing), 10/100 Fast Ethernet GREEN	Fully Managed, M4100 series (L2+ with static routing), Gigabit GREEN
24 / 2 10GBase-T	24 / 2 10GBase-T	48		12 10GBase-T	2	12
2 SFP+ (10G)	2 SFP+ (10G)	4 SFP+ (10G)		2 Combo SFP+ (10G)	2 SFP	4 SFP
24	48				48	
24	48					1 (PD: powered by PoE+)
195 Watts / up to 740W with RPS	390 Watts / up to 1,440W with RPS				380W standard / up to 740W with EPS	
2	2	2				
40 Gbps	40 Gbps	40 Gbps				
6 units or 300 ports	6 units or 300 ports	6 units or 300 ports				
S3300 series	S3300 series	GS7xxTXS				
16,000	16,000	16,000		32,000	16,000	16,000
512	1512	1,024		1,024	512	512
32	32	32		32	64	64
480	480	100		100	512	512
•	•	•		•	•	•
•	•	•		•	•	•
v1, v2c, v3	v1, v2c, v3	v1, v2c, v3		v1, v2c, v3	v1, v2c, v3	v1, v2c, v3
1,2,3,9	1,2,3,9	1,2,3,9		1,2,3,9	1, 2, 3, 9	1, 2, 3, 9
Client/Server	Client/Server	Client/Server		Client/Server	Client/Server	Client/Server
Many-to-One	Many-to-One	Many-to-One		Many-to-One	Many-to-One	Many-to-One
•	•	•		•	•	•
8	8	8		8	8	8
802.1p; Diffserv; TCP/UDP	802.1p; Diffserv; TCP/UDP	802.1p; Diffserv; TCP/UDP		802.1p; Diffserv; TCP/UDP	802.1p; Diffserv; TCP/UDP	802.1p; Diffserv; TCP/UDP
•	•	•		•	•	•
v1, v2, v3	v1, v2, v3	v1, v2, v3		v1, v2, v3	v1, v2, v3	v1, v2, v3
•	•	•		•	•	•
128 Gbps	176 Gbps	176 Gbps		240 Gbps	9 Gbps	24 Gbps
2 MB Per System	2 MB Per System	2 MB Per System		2 MB Per System	12 MB	12 MB
•	•	•		•	9K	9K
802.1d, .1w, .1s	802.1d, .1w, .1s	802.1d, .1w, .1s		802.1d, .1w, .1s	802.1d, .1w, .1s	802.1d, .1w, .1s
					RPS / EPS	When powered by PoE+
256	256	256		256	1,024 / 1,024	1,024 / 1,024
•	•	•		•	•	•
•	•	•		•	•	•
•	•	•		•	•	•
•	•	•		•	•	•
•	•	•		•	•	•
•	•	•		•	•	•
MAC, IP, TCP	MAC, IP, TCP	MAC, IP, TCP		MAC, IP, TCP	MAC, IP, TCP	MAC, IP, TCP
HTTPS	HTTPS	HTTPS		HTTPS	SSL/SSH & HTTPS	SSL/SSH & HTTPS
•	•	•		•	•	•
•	•	•		•	•	•
•	•	•		•	•	•
•	•	•		•	•	•
•	•	•		•	•	•
44.12 Watts	1484.12 Watts	77 Watts		Support	486.64 Watts	18.80 Watts
R	R	R		R	R	D
M	M	M		M	M	M
147,965 hours	216,809 hours	256,119 Hours		211,197 Hours	163,019 Hours	214,142 Hours
36.8 dBA	40 dBA	34.8 dBA		49.7 dBA	38.9 dBA	0 dBA
•	•	•		•	•	•
440 x 257 x 43 mm (17.32 x 10.13 x 1.7 in)	440 x 257 x 43 mm (17.32 x 10.13 x 1.7 in)	440 x 257 x 43 mm (17.32 x 10.13 x 1.7 in)		440 x 257 x 43 mm (17.32 x 10.13 x 1.7 in)	440 x 310 x 43.2 mm (17.32 x 12.20 x 1.7 in)	328 x 169 x 43.2 mm (12.91 x 6.65 x 1.7 in)
3.77 kg (8.3 lb)	3.55 kg (7.8 lb)	4.5 kg (10 lb)		4.04 kg (8.9 lb)	4.96 kg (10.9 lb)	1.33 kg (2.9 lb)
A	A	A		A	A	A
Lifetime	Lifetime	Lifetime		Lifetime	Lifetime	Lifetime
Lifetime	Lifetime	Lifetime		Lifetime	Lifetime	Lifetime
AGM731F/AGM732F; AXM761/AXM762/AXM763 /AXC761/AXC763	AGM731F/AGM732F; AXM761/AXM762/AXM763 /AXC761/AXC763; RPS4000 (RPS only)	AGM731F/AGM732F; AXM761/AXM762/AXM763/AXC761/AXC763		AGM731F/AGM732F; AXM761/AXM762/AXM763 /AXC761/AXC763	AFM735/ AGM731F/AGM732F, RPS5412 (RPS x1 switch) RPS4000 (RPS/EPs x4 switches)	AFM735/ AGM731F/AGM732F
PMB0332	PMB0332	PMB0334		PMB0332	PMB0332	PMB0332

*Including Lifetime Next Business Day Hardware Replacement (For a list of countries where service is available, and terms and conditions visit <http://nbd.netgear.com>).

** Including ProSUPPORT Lifetime 24x7 Advanced Technical Support via chat.

*** 90-day ProSUPPORT 24x7 Advanced Technical Support via phone can be extended by purchasing one, three, or five year On Call contracts.

ProSAFE Switches

NETGEAR®
ProSAFE®

**Fully Managed, M4100 series
(L2+ with static routing), Gigabit**

MODEL		M4100-D12G-POE+ (GSM5212P) GREEN	M4100-12GF (GSM7212F) GREEN	M4100-26G (GSM7224) GREEN	M4100-50G (GSM7248) GREEN
Port Configuration	10/100 RJ45 Ports (Auto Uplink)				
	10/100/1000 RJ45 Ports (Auto Uplink)	12	12	26	50
	Fiber Ports	4 SFP	12 SFP	4 SFP	4 SFP
	10Gig Module Bays				
PoE	Power Over Ethernet 802.3af Ports	10	4		
	PoE Plus (30W) 802.3at Ports	12 (2 PD + 10 PSE)	4		
	Total PoE Budget	125W standard / 22W passthrough	150W standard		
Stacking	Number of Dedicated Stacking Ports				
	Stacking Bandwidth				
	Stacking (maximum capacity)				
	Stacking Compatibility				
Scalability	# MAC Addresses	16,000	16,000	16,000	16,000
	ARP Table – Size of	512	512	512	512
	# Routing Entries	64	64	64	64
	# ACL Rules	512	512	512	512
System Management	Single IP Management				
	Web Managed/GUI	•	•	•	•
	Command Line Interface/R5232 Console/Telnet	•	•	•	•
	SNMP Version	v1, v2c, v3	v1, v2c, v3	v1, v2c, v3	v1, v2c, v3
	RMON Group	1, 2, 3, 9	1, 2, 3, 9	1, 2, 3, 9	1, 2, 3, 9
	DHCP (Client/Server)	Client/Server	Client/Server	Client/Server	Client/Server
	Port Mirroring	Many-to-One	Many-to-One	Many-to-One	Many-to-One
	IPv6 full set	•	•	•	•
	Quality of Service	Number of Priority Queues	8	8	8
Traffic Prioritisation		802.1p ; Diffserv ; TCP/UDP	802.1p ; Diffserv ; TCP/UDP	802.1p ; Diffserv ; TCP/UDP	802.1p ; Diffserv ; TCP/UDP
Auto Voice VLAN		•	•	•	•
Multicast Filtering	IGMP Snooping Version	v1, v2, v3	v1, v2, v3	v1, v2, v3	v1, v2, v3
	IGMP Snooping Querier	•	•	•	•
Performance	Bandwidth	24 Gbps	24 Gbps	52 Gbps	100 Gbps
	Buffer Memory	12 MB	12 MB	12 MB	12 MB
	Jumbo Frames	9K	9K	9K	9K
Availability	Spanning Tree 802.1d/RSTP .1w/MSTP .1s	802.1d, .1w, .1s	802.1d, .1w, .1s	802.1d, .1w, .1s	802.1d, .1w, .1s
	RPS Redundant Power Supply	When powered by PoE+	RPS	RPS	RPS
	Modular Power Supply				
Traffic Management	Number of 802.1q VLAN/Number of VLAN Group	1,024 / 1,024	1,024 / 1,024	1,024 / 1,024	1,024 / 1,024
	Link Agregation 802.3ad/LACP	•	•	•	•
	Discovery Protocol LLDP 802.1ab	•	•	•	•
	Rate Limiting	•	•	•	•
	Broadcast Storm Control	•	•	•	•
L3 Routing	IPv4 Static Routing	•	•	•	•
	IPv4 RIPv1/2, OSPFv1/2, VRRP, EMCP				
	IPv6 Static Routing, IPv6 OSPFv3				
	IPv4 / IPv6 Multicast Routing PIM-SM/DM				
Security	IEEE 802.1x (RADIUS)	•	•	•	•
	ACL – Access Control Lists	MAC, IP, TCP	MAC, IP, TCP	MAC, IP, TCP	MAC, IP, TCP
	SSL/SSH & HTTPS	SSL/SSH & HTTPS	SSL/SSH & HTTPS	SSL/SSH & HTTPS	SSL/SSH & HTTPS
	Guest VLAN	•	•	•	•
	DHCP Snooping/IP Source Guard/ARP Guard	•	•	•	•
	TACACS+	•	•	•	•
Energy Efficiency	EEE 802.3az				
	Auto Port Power Down	•	•	•	•
	Dynamic Power Consumption				
	Power Consumption	166,6 Watts	160,6 Watts	31,6 Watts	49,5 Watts
Physical	Desktop/Rackmount/Click	D	R	R	R
	Metal/Plastic Enclosure	M	M	M	M
	MTBF	766,618 hours	670,956 hours	702,785 hours	489,311 hours
	Acoustic Noise at 25°C	19.8 dB	30 dB	35.6 dB	37.2 dB
	Fan	•	•	•	•
	Width x Depth x Height	331 x 208 x 43.2 mm (13.03 x 8.19 x 1.7 in)	440 x 257 x 43.2 mm (17.3 x 10.12 x 1.7 in)	440 x 257 x 43.2 mm (17.3 x 10.12 x 1.7 in)	440 x 257 x 43.2 mm (17.3 x 10.12 x 1.7 in)
Weight	2.596 kg (5.73 lb)	3.665 kg (8.08 lb)	3.24 kg (7.1 lb)	3.63 kg (8.0 lb)	
Electromagnetic Compliance	Class (A or B)	A	A	A	A
Warranty Hardware*	Lifetime	Lifetime	Lifetime	Lifetime	
Warranty Power Supply	Lifetime	Lifetime	Lifetime	Lifetime	
Modules	AFM735/ AGM731F/AGM732F	AFM735/ AGM731F/AGM732F, RPS5412 (RPS x1 switch) RPS4000 (RPS x4 switches)	AFM735/ AGM731F/AGM732F, RPS5412 (RPS x1 switch) RPS4000 (RPS x4 switches)	AFM735/ AGM731F/AGM732F, RPS5412 (RPS x1 switch) RPS4000 (RPS x4 switches)	
ProSUPPORT Maintenance PKGS***	On Call 3-year 24 x 7	PMB0332	PMB0332	PMB0332	





Fully Managed, M5300 series (L2+ with static routing and L3 license upgrades, or L3 versions), Gigabit

M4100-12G-POE+ (GSM7212P)	GREEN	M4100-26G-POE (GSM7226LP)	GREEN	M4100-24G-POE+ (GSM7224P)	GREEN	M4100-50G-POE+ (GSM7248P)	GREEN	M5300-28G (GSM7228S)
12		26		24		50		24 / 2 10GBase-T
4 SFP		4 SFP		4 SFP		4 SFP		4 SFP / 2 SFP+ (10G)
								2 I/O 10G bays
12		24		24		48		
12				24		48		
380W standard		192W standard / up to 380W with EPS		380W standard / up to 720W with EPS		380W standard / up to 1,440W with EPS		
								2 or 4
								48Gbps AX742 I/O bays
								8 switches, 384 ports
								M5300, GSM72xxPS, GSM73xxSv2
16,000		16,000		16,000		16,000		32,000
512		512		512		512		6,144
64		64		64		64		12,256
512		512		512		512		16,384 (ingress, egress)
•		•		•		•		•
•		•		•		•		•
v1, v2c, v3		v1, v2c, v3		v1, v2c, v3		v1, v2c, v3		v1, v2c, v3
1, 2, 3, 9		1, 2, 3, 9		1, 2, 3, 9		1, 2, 3, 9		1, 2, 3, 9
Client/Server		Client/Server		Client/Server		Client/Server		Client/Server
Many-to-One		Many-to-One		Many-to-One		Many-to-One		Many-to-One; RSPAN
•		•		•		•		•
8		8		8		8		8
802.1p; Diffserv; TCP/UDP		802.1p; Diffserv; TCP/UDP		802.1p; Diffserv; TCP/UDP		802.1p; Diffserv; TCP/UDP		802.1p; Diffserv; TCP/UDP
•		•		•		•		•
v1, v2, v3		v1, v2, v3		v1, v2, v3		v1, v2, v3		v1, v2, v3
•		•		•		•		•
24 Gbps		52 Gbps		48 Gbps		100 Gbps		144 Gbps
12 MB		12 MB		12 MB		12 MB		16 MB
9K		9K		9K		9K		12K
802.1d, .1w, .1s		802.1d, .1w, .1s		802.1d, .1w, .1s		802.1d, .1w, .1s		802.1d, .1w, .1s; PV(R)STP
RPS		RPS / EPS		RPS / EPS		RPS / EPS		RPS
								APS135W
1,024 / 1,024		1,024 / 1,024		1,024 / 1,024		1,024 / 1,024		4,093 / 4,093
•		•		•		•		•
•		•		•		•		•
•		•		•		•		•
•		•		•		•		•
•		•		•		•		•
								with GSM7228L license
								with GSM7228L license
								with GSM7228L license
•		•		•		•		•
MAC, IP, TCP		MAC, IP, TCP		MAC, IP, TCP		MAC, IP, TCP		MAC, IP, TCP
SSL/SSH & HTTPS		SSL/SSH & HTTPS		SSL/SSH & HTTPS		SSL/SSH & HTTPS		SSL/SSH & HTTPS
•		•		•		•		•
•		•		•		•		•
•		•		•		•		•
•		•		•		•		•
452 Watts		272.90 Watts		533 Watts		555.5 Watts		55 Watts
R		R		R		R		R
M		M		M		M		M
422,436 hours		437,199 hours		394,619 hours		239,298 hours		560,449 hours
35.8 dBA		36.6 dBA		33.8 dBA		47.7 dBA		37.3 dBA
•		•		•		•		•
440 x 257 x 43.2 mm (17.3 x 10.12 x 1.7 in)		440 x 257 x 43.2 mm (17.3 x 10.12 x 1.7 in)		440 x 257 x 43.2 mm (17.3 x 10.12 x 1.7 in)		440 x 310 x 43.2 mm (17.32 x 12.20 x 1.7 in)		440 x 391 x 43.2 mm (17.32 x 15.39 x 1.7 in)
4.021 kg (8.86 lb)		3.79 kg (8.36 lb)		4.368 kg (9.63 lb)		4.96 kg (10.9lb)		6.3 kg (13.89 lb)
A		A		A		A		A
Lifetime		Lifetime		Lifetime		Lifetime		Lifetime
Lifetime		Lifetime		Lifetime		Lifetime		Lifetime
AFM735/ AGM731F/AGM732F, RPS5412 (RPS x1 switch) RPS4000 (RPS x4 switches)		AFM735/ AGM731F/AGM732F, RPS5412 (RPS x1 switch) RPS4000 (RPS/EPS x4 switches)		AFM735/ AGM731F/AGM732F, RPS5412 (RPS x1 switch) RPS4000 (RPS/EPS x4 switches)		AFM735/ AGM731F/AGM732F, RPS5412 (RPS x1 switch) RPS4000 (RPS/EPS x4 switches)		AFM735, AGM731F/AGM732F, AX742, AX743/AX744/AX745, AXM761/AXM762/AXM763, RPS5412 (RPS x1 switch) RPS4000 (RPS x4 switches)
PMB0332		PMB0332		PMB0332		PMB0332		PMB0333

*Including Lifetime Next Business Day Hardware Replacement (For a list of countries where service is available, and terms and conditions visit <http://nbd.netgear.com>).

** Including ProSUPPORT Lifetime 24x7 Advanced Technical Support via chat.

*** 90-day ProSUPPORT 24x7 Advanced Technical Support via phone can be extended by purchasing one, three, or five year On Call contracts.

ProSAFE Switches



**Fully Managed, M5300 series
(L2+ with static routing and L3 license upgrades, or L3 versions),
Gigabit**

MODEL	M5300-52G (GSM7252S)	M5300-28G-POE+ (GSM7228PS)	M5300-52G-POE+ (GSM7252PS)	M5300-28G3 (GSM7328S)
Port Configuration	10/100 RJ45 Ports (Auto Uplink)			
	10/100/1000 RJ45 Ports (Auto Uplink)	48 / 2 10GBase-T	24 / 2 10GBase-T	24 / 2 10GBase-T
	Fiber Ports	4 SFP / 2 SFP+ (10G)	4 SFP / 2 SFP+ (10G)	4 SFP / 2 SFP+ (10G)
	10Gig Module Bays	2 I/O 10G bays	2 I/O 10G bays	2 I/O 10G bays
PoE	Power Over Ethernet 802.3af Ports	24	48	
	PoE Plus (30W) 802.3at Ports	24	48	
	Total PoE Budget		380W standard / up to 720W with EPS	380W standard / up to 1,440W with EPS
Stacking	Number of Dedicated Stacking Ports	2 or 4	2 or 4	2 or 4
	Stacking Bandwidth	48Gbps AX742 I/O bays	48Gbps AX742 I/O bays	48Gbps AX742 I/O bays
	Stacking (maximum capacity)	8 switches, 384 ports	8 switches, 384 ports	8 switches, 384 ports
	Stacking Compatibility	M5300, GSM72xxPS, GSM73xxSv2	M5300, GSM72xxPS, GSM73xxSv2	M5300, GSM72xxPS, GSM73xxSv2
Scalability	# MAC Addresses	32,000	32,000	32,000
	ARP Table – Size of	6,144	6,144	6,144
	# Routing Entries	12,256	12,256	12,256
	# ACL Rules	16,384 (ingress, egress)	16,384 (ingress, egress)	16,384 (ingress, egress)
System Management	Single IP Management	•	•	•
	Web Managed/GUI	•	•	•
	Command Line Interface/RS232 Console/Telnet	•	•	•
	SNMP Version	v1, v2c, v3	v1, v2c, v3	v1, v2c, v3
	RMON Group	1, 2, 3, 9	1, 2, 3, 9	1, 2, 3, 9
	DHCP (Client/Server)	Client/Server	Client/Server	Client/Server
	Port Mirroring	Many-to-One; RSPAN	Many-to-One; RSPAN	Many-to-One; RSPAN
	IPv6 full set	•	•	•
	Number of Priority Queues	8	8	8
	Traffic Prioritisation	802.1p; Diffserv; TCP/UDP	802.1p; Diffserv; TCP/UDP	802.1p; Diffserv; TCP/UDP
Multicast Filtering	Auto Voice VLAN	•	•	•
	IGMP Snooping Version	v1, v2, v3	v1, v2, v3	v1, v2, v3
Performance	IGMP Snooping Querier	•	•	•
	Bandwidth	192 Gbps	144 Gbps	192 Gbps
	Buffer Memory	32 MB	16 MB	32 MB
Availability	Jumbo Frames	12K	12K	12K
	Spanning Tree 802.1d/RSTP .1w/MSTP .1s	802.1d, .1w, .1s; PV(R)STP	802.1d, .1w, .1s; PV(R)STP	802.1d, .1w, .1s; PV(R)STP
	RPS Redundant Power Supply	RPS	RPS / EPS	RPS / EPS
Traffic Management	Modular Power Supply	APS135W	APS525W	APS135W
	Number of 802.1q VLAN/Number of VLAN Group	4,093 / 4,093	4,093 / 4,093	4,093 / 4,093
	Link Aggregation 802.3ad/LACP	•	•	•
	Discovery Protocol LLDP 802.1ab	•	•	•
	Rate Limiting	•	•	•
	Broadcast Storm Control	•	•	•
L3 Routing	IPv4 Static Routing	•	•	•
	IPv4 RIPv1/2, OSPFv1/2, VRRP, EMCP	with GSM7252L license	with GSM7228PL license	with GSM7252PL license
	IPv6 Static Routing, IPv6 OSPFv3	with GSM7252L license	with GSM7228PL license	with GSM7252PL license
	IPv4 / IPv6 Multicast Routing PIM-SM/DM	with GSM7252L license	with GSM7228PL license	with GSM7252PL license
Security	IEEE 802.1x (RADIUS)	•	•	•
	ACL – Access Control Lists	MAC, IP, TCP	MAC, IP, TCP	MAC, IP, TCP
	SSL/SSH & HTTPS	SSL/SSH & HTTPS	SSL/SSH & HTTPS	SSL/SSH & HTTPS
	Guest VLAN	•	•	•
	DHCP Snooping/IP Source Guard/ARP Guard	•	•	•
	TACACS+	•	•	•
Energy Efficiency	EEE 802.3az	•	•	•
	Auto Port Power Down	•	•	•
	Dynamic Power Consumption			
	Power Consumption	79 Watts	535 Watts	556 Watts
Physical	Desktop/Rackmount/Click	R	R	R
	Metal/Plastic Enclosure	M	M	M
	MTBF	421,113 hours	285,927 hours	194,138 hours
	Acoustic Noise at 25°C	34.9 dBA	44.8 dBA	43.2 dBA
	Fan	•	•	•
	Width x Depth x Height	440 x 391 x 43.2 mm (17.32 x 15.39 x 1.7 in)	440 x 391 x 43.2 mm (17.32 x 15.39 x 1.7 in)	440 x 391 x 43.2 mm (17.32 x 15.39 x 1.7 in)
Electromagnetic Compliance	Weight	6.8 kg (14.99 lb)	6.95 kg (15.32 lb)	7.56 kg (16.67 lb)
	Class (A or B)	A	A	A
Warranty Hardware*	Lifetime	Lifetime	Lifetime	Lifetime
Warranty Power Supply	Lifetime	Lifetime	Lifetime	Lifetime
Modules	AFM735; AGM731F/AGM732F AX742; AX743/AX744/AX745; AXM761/AXM762/AXM763; RPS5412 (RPS x1 switch); RPS4000 (RPS/EPs x4 switches)	AFM735; AGM731F/AGM732F AX742; AX743/AX744/AX745; AXM761/AXM762/AXM763; RPS5412 (RPS x1 switch); RPS4000 (RPS/EPs x4 switches)	AFM735; AGM731F/AGM732F AX742, AX743/AX744/AX745; AXM761/AXM762/AXM763; RPS5412 (RPS x1 switch); RPS4000 (RPS/EPs x4 switches)	AFM735, AGM731F/AGM732F AX742, AX743/AX744/AX745; AXM761/AXM762/AXM763; RPS5412 (RPS x1 switch); RPS4000 (RPS x4 switches)
ProSUPPORT Maintenance PKGS***	On Call 24 x 7/XPRESSHW	PMB0334	PMB0333	PMB0334



		Fully Managed, M6100 series (L3), Gigabit	Fully Managed, M7100 series (L2+ with static routing), 10 Gigabit	Fully Managed, M7300 series (L2+ with static routing and L3 license upgrade), 10 Gigabit
M5300-52G3 (GSM7352S)	M5300-28GF3 (GSM7328F5)	M6100 Series (XCM8900)	M7100-24X (XSM7224)	M7300-24XF (XSM7224S)
48 / 2 10GBase-T	4 / 2 10GBase-T	Up to 144 / 72 10GBase-T	24 10GBase-T	4 10GBase-T
4 SFP / 2 SFP+ (10G)	24 SFP / 2 SFP+ (10G)	Up to 120 SFP / 48 SFP+	4 SFP+ (10G)	24 SFP+ (10G)
2 I/O 10G bays	2 I/O 10G bays			
		Up to 144		
		Up to 144, including UPOE 60W		
		Up to 6,000W		
2 or 4	2 or 4	3-slot Chassis		4 or more
48Gbps AX742 I/O bays	48Gbps AX742 I/O bays	Management and Fabric Redundancy		80 Gbps (4 ports)
8 switches, 384 ports	8 switches, 384 ports	Hitless Failover		8 switches, 96 ports
M5300, GSM72xxPS, GSM73xxSv2	M5300, GSM72xxPS, GSM73xxSv2	Distributed Fabric		XSM7224S
32,000	32,000	32,000	32,000	32,000
6,144	6,144	8K	6,144	6,144
12,256	12,256	12000	128	12,256
16,384 (ingress, egress)	16,384 (ingress, egress)	16K (ingress, egress)	16,384 (ingress, egress)	16,384 (ingress, egress)
•	•	•	•	•
•	•	•	•	•
•	•	•	•	•
v1, v2c, v3	v1, v2c, v3	v1, v2c, v3	v1, v2c, v3	v1, v2c, v3
1, 2, 3, 9	1, 2, 3, 9	1, 2, 3, 9	1, 2, 3, 9	1, 2, 3, 9
Client/Server	Client/Server	Client/Server	Client/Server	Client/Server
Many-to-One; RSPAN	Many-to-One; RSPAN	Many-to-One; RSPAN	Many-to-One; RSPAN	Many-to-One
•	•	•	•	•
8	8	7	8	8
802.1p; Diffserv; TCP/UDP	802.1p; Diffserv; TCP/UDP	802.1p; Diffserv; TCP/UDP	802.1p; Diffserv; TCP/UDP	802.1p; Diffserv; TCP/UDP
•	•	•	•	•
v1, v2, v3	v1, v2, v3	v1, v2, v3	v1, v2, v3	v1, v2, v3
•	•	•	•	•
192 Gbps	144 Gbps	480 Gbps inter-module	480 Gbps	480 Gbps
32 MB	16 MB	32 Mb (1G); 72 Mb (10G)	16 Mb	16 MB
12K	12K	12K	12K	9K
802.1d, .1w, .1s; PV(R)STP	802.1d, .1w, .1s; PV(R)STP	802.1d, .1w, .1s; PV(R)STP	802.1d, .1w, .1s; PV(R)STP	802.1d, .1w, .1s
RPS	RPS	N+1 PSU	Second optional APS300W	Second optional APS300W
APS135W	APS135W	Up to 4 or 8 APS1000W	APS300W	APS300W
4,093 / 4,093	4,093 / 4,093	4K / 4K	1,024/1,024	1,024/1,024
•	•	•	•	•
•	•	•	•	•
•	•	•	•	•
•	•	•	•	•
•	•	•	•	•
•	•	•	•	•
•	•	•	•	•
•	•	•	•	with XSM7224L license
•	•	•	•	with XSM7224L license
•	•	•	•	with XSM7224L license
•	•	•	•	•
MAC, IP, TCP	MAC, IP, TCP	MAC, IP, TCP	MAC, IP, TCP	MAC, IP, TCP
SSL/SSH & HTTPS	SSL/SSH & HTTPS	SSL/SSH & HTTPS	SSL/SSH & HTTPS	SSL/SSH & HTTPS
•	•	•	•	•
•	•	•	•	•
•	•	•	•	•
•	•	•	•	•
79 Watts	55 Watts	See online configurator	200 Watts	132W (SR optics) 195.2 Watts (LR optics)
R	R	R	R	R
M	M	M	M	M
421,113 hours	539,481 hours	387 Years (Base Chassis)	172,955 Hours	180,178 Hours
34.9 dBA	35.6 dBA	53 dBA	<60 dBA	44 dBA
•	•	•	•	•
440 x 391 x 43.2 mm (17.32 x 15.39 x 1.7 in)	440 x 391 x 43.2 mm (17.32 x 15.39 x 1.7 in)	432 x 442 x 176 mm (17.01 x 17.39 x 6.93 in)	440 x 430 x 43.2 mm (17.32 x 16.93 x 1.7 in)	440 x 431 x 43.2 mm (17.32 x 17 x 1.7 in)
6.8 kg (14.99 lb)	5.4 kg (11.91 lb)	Up to 31.6 kg (69.67lb)	6.98 kg (15.40 lb)	6.3 kg (13.89 lb)
A	A	A	A	A
Lifetime	Lifetime	Lifetime	Lifetime	Lifetime
Lifetime	Lifetime	Lifetime	Lifetime	Lifetime
AFM735, AGM731F/AGM732F AX742; AX743/AX744/AX745; AXM761/AXM762/AXM763; RPS5412 (RPS x1 switch); RPS4000 (RPS x4 switches)	AFM735, AGM731F/AGM732F AX742; AX743/AX744/AX745; AXM761/AXM762/AXM763; RPS5412 (RPS x1 switch); RPS4000 (RPS x4 switches)	XCM8948/XCM8944/ XCM8944F/XCM8924X/XCM89P/ XCM89UP; RPS4000v2; AGM731F/AGM732F/AGM734; AXM761/AXM762/AXM763; AXC761/AXC763/AXC753; APS1000W; AFT603	AGM731F/AGM732F/AGM734; AXM761/AXM762/AXM763; AXC761/AXC763/AXC753; APS300W; AFT200	AGM731F/AGM732F/AGM734; AXM761/AXM762/AXM763; AXC761/AXC763/AXC753; APS300W; AFT200
PMB0334	PMB0333	PMB0334	PMB0334	PMB0334

*Including Lifetime Next Business Day Hardware Replacement (For a list of countries where service is available, and terms and conditions visit <http://nbd.netgear.com>).

** Including ProSUPPORT Lifetime 24x7 Advanced Technical Support via chat.

*** 90-day ProSUPPORT 24x7 Advanced Technical Support via phone can be extended by purchasing one, three, or five year On Call contracts.

NETGEAR M6100 Chassis Switch Series

Designed for use at the centre of a small to mid-sized organisation, or as an access solution in a larger campus network, the ProSAFE M6100 switch series is a high-quality, high-density chassis alternative to stackable switches. Offering the densest Gigabit and 10G port count in a 4U footprint, the M6100 is a fully distributed fabric, passive backplane solution with management and power redundancy – as standard.

NETGEAR M6100 series key features:

- Proficient access layer in campus LAN networks, and competent distribution or core layer for midsize organisations networks
- Advanced Layer 2, Layer 3 and Layer 4 feature set – no license required – including PBR, BGP, DCBX, PFC, ETS and FCoE FIP
- 1.4 Tbps switching and routing capacity, passive backplane, management and fabric nonstop forwarding redundancy
- Up to 144 (Gigabit) ports, or 72 (10 Gigabit) ports, or a combination of both in dense form factor models
- POE+ (30 watts per port) and UPOE (60 watts per port) modular, flexible implementation
- Ultra-low latency and scalable table size with 32K MAC, 8K ARP/NDP, 4K VLANs, 12K routes

NETGEAR M6100 series warranty and support:

- NETGEAR ProSafe Lifetime Hardware Warranty
- Included Lifetime Online Technical Support
- Included Lifetime Next Business Day Hardware Replacement



M6100-35

MODEL	Form Factor	Front		Size	
		I/O Slots	PSU Bay	Height	Depth
M6100-35 (XCM8903)	Chassis	3 Open line-card slots	4 Power supply slots (N+1)	4U height 7 in (17.78 cm)	17.39 in (44.16 cm)

MODEL	Form Factor	Line-Cards			
		10/100/ 1000 BASE-T RJ45 ports	100/1000X Fiber SFP ports	100/1000/ 10 GBASE-T RJ45 ports	1000/10 GBase-X Fiber SFP+ports
XCM8948	I/O Blade	48	-	-	-
XCM8944	I/O Blade	40	-	2	2 (independent)
XCM8944F	I/O Blade	-	40	2	2 (independent)
XCM8924X	I/O Blade	-	-	24	16 (shared with 10 GBASE-T)

Accessories			
MODEL	Form Factor		Notes
XCM89P	Daughter Card		Add POE+ 802.3at functionality to XCM8948 and XCM8944 blades
XCM89UP	Daughter Card		Add UPOE functionality to XCM8944 and XCM8948 blades
APS1000W	Power Supply		PSU 1,000W AC
AFT603	Fan Tray		Fan Tray for M6100-35 chassis (front-to-back cooling principle)
RPS4000v2	External PSU Bay		Additional 1U power shelf (RPS/EPs unit with four open power supply slots)

Modules and Accessories for Switches



For use with ProSAFE managed switches

Gigabit Fiber Modules Unmanaged/Smart/L2 and L3 Managed



MODEL	AGM731F	AGM732F	AGM734	AFM735
Product Description	SFP Transceiver 1000BASE-SX	SFP Transceiver 1000BASE-LX	SFP Transceiver 1000BASE-T	SFP Transceiver 100BASE-FX
Distance	Up to 550m	Up to 10km	Up to 100m	Up to 2km
Cabling Type	IEEE 802.3z 1000BASE-SX	IEEE 802.3z 1000BASE-LX	1000BASE-T	IEEE 802.3-2002 100BASE-FX
Connector	LC duplex	LC duplex	RJ45	LC duplex
Interface (Bus) Type	Small Form Factor Pluggable (SFP)	Small Form Factor Pluggable (SFP)	Small Form Factor Pluggable (SFP)	Small Form Factor Pluggable (SFP)
Form Factor	Plug-in module	Plug-in module	Plug-in module	Plug-in module
Data Transfer Rate	1 Gbps	1 Gbps	1 Gbps	100 Mbps
Hot-Swappable	•	•	•	•
Fiber Cable Support	50µm OM4 multimode (1000m); 50µm OM3 multimode (550m); 62.5µm OM1/OM2 multimode (275m)	9µm single mode (10km)	Copper CAT5E or better (1000Mbps Full Duplex only)	50µm/62.5µm OM1/OM2/OM3/OM4 multimode (2km)
Switch Compatibility	Smart, Plus and Managed Switches	Smart, Plus and Managed Switches	M5300-28GF3, M6100-44GF3, M7100	Managed Switches
Warranty	5 Year	5 Year	5 Year	5 Year

10Gigabit Copper and Fiber Modules Layer 2 And Layer 3 Managed Gsm72xxps/Gsm73xxs



MODEL	AX742	AX743	AX745	AXM761	AXM762
Product Description	24 / 48 Gigabit Stacking Kit	I/O Module SFP+	I/O Module 10GBase-T	SFP+ Transceiver 10GBASE-SR	SFP+ Transceiver 10GBASE-LR
Distance	N/A	N/A	Up to 100m	Up to 500m	Up to 10km
Cabling Type	CX4 Cable	Fiber or DAC	CAT5/5E: GIGABIT CAT6: 10GBASE-T 30m CAT6A/7: 10GBASE-T 100m	10GBASE-SR "Short Reach"	10GBASE-LR "Long Reach"
Connector	CX4	SFP+	One RJ45 connection	LC duplex	LC duplex
Interface (Bus) Type	24/48 Gigabit High-speed Stacking	10 Gigabit Small Form Factor Pluggable (SFP+)	10 Gigabit 10GBASE-T	10 Gigabit Small Form Factor Pluggable (SFP+)	10 Gigabit Small Form Factor Pluggable (SFP+)
Form Factor	Plug-in module	I/O Module	I/O Module	Plug-in SFP+	Plug-in SFP+
Data Transfer Rate	12 Gbps Full-duplex (24 Gbps)	10 Gbps	10 Gbps	10 Gbps	10 Gbps
Hot-Swappable	•	•	•	•	•
Fiber Cable Support	NA	Depends on SFP+ optics	NA	50µm OM4 multimode (500m); 50µm OM3 multimode (300m); 62.5µm OM1/OM2 multimode (33m)	9µm single mode (10km)
Switch Compatibility	M5300 series (rear bays)	M5300 series (rear bays)	M5300 series (rear bays)	XS7xxx, S3300, M5300, M6100, M7100, M7300	XS7xxx, S3300, M5300, M6100, M7100, M7300
Warranty	5 Year	5 Year	5 Year	5 Year	5 Year

Modules and Accessories for Switches

For use with ProSAFE managed switches

10Gigabit Copper and Fiber Modules Layer 2 and Layer 3 Managed GSM72xxPS/ GSM73xxS



MODEL	AXM763	AXM764	AXC761	AXC763
Product Description	SFP+ Transceiver 10GBASE-LRM	SFP+ Transceiver 10GBASE-LR Lite	SFP+ DAC Cable 1m	SFP+ DAC Cable 3m
Distance	Up to 260m	Up to 2km	1m	3m
Cabling Type	10GBASE-LRM Long Reach Multimode	10GBASE-LR "Lite"	Direct Attach 10GSFP+Cu	Direct Attach 10GSFP+Cu
Connector	LC duplex	LC duplex	SFP+	SFP+
Interface (Bus) Type	10 Gigabit Small Form Factor Pluggable (SFP+)	10 Gigabit Small Form Factor Pluggable (SFP+)	10 Gigabit Small Form Factor Pluggable (SFP+)	10 Gigabit Small Form Factor Pluggable (SFP+)
Form Factor	Plug-in SFP+	Plug-in SFP+	SFP+ Cable	SFP+ Cable
Data Transfer Rate	10 Gbps	10 Gbps	10 Gbps	10 Gbps
Hot-Swappable	•	•	•	•
Fiber Cable Support	62.5µm OM1/OM2 multimode (220m); 50µm OM3/OM4 multimode (260m)	9µm single mode (2km)	NA	NA
Switch Compatibility	XS7xxx, S3300, M5300, M6100, M7100, M7300	XS7xxx, S3300, M5300, M6100, M7100, M7300	XS7xxx, S3300, M5300, M6100, M7100, M7300	XS7xxx, S3300, M5300, M6100, M7100, M7300
Warranty	5 Year	5 Year	5 Year	5 Year

Modular Power Supply Layer 2 and Layer 3 Managed Switches



MODEL	APS525W	APS135W	RPS4000v2	APS1000W
Product Description	ProSAFE Auxiliary Power Supply	ProSAFE Auxiliary Power Supply	Redundant / External Power Supply (RPS/EPS for up to 4 switches)	Power Module for RPS4000 and M6100
Hot-Swappable	When used with an RPS	When used with an RPS	Yes	Yes
Switch Compatibility	M5300 series (PoE versions)	M5300 series (non-PoE versions)	S3300 (PoE), M4100, M5300, M6100	RPS4000, RPS4000v2, M6100
Warranty	5 Year	5 Year	5 Year	5 Year

Modular Power Supply Layer 2 and Layer 3 Managed Switches



MODEL	RPS5412	AFT200	APS300W
Product Description	External Redundant Power Supply	ProSAFE Auxiliary Fan Tray	ProSAFE Auxiliary Power Supply
Hot-Swappable	Yes	Yes	Yes
Switch Compatibility	M4100 series, M5300 series	M7100 series, M7300 series	M7100 series, M7300 series
Warranty	5 Year	5 Year	5 Year

ProSAFE Business Wireless Portfolio

NETGEAR provides a full suite of access points for small business, home office, medium enterprise, K-12 education, hospitality, and health care deployments. NETGEAR ProSAFE access points deliver superior coverage, reliability, and scalability at an affordable price. NETGEAR ProSAFE wireless controllers and wireless management systems provide Centralised configuration, deployment, and management of multiple access points from a single console for ease of deployment and day-to-day management of the entire wireless network.

The ProSAFE wireless portfolio is designed to be reliable, affordable, and easy to use, making it an ideal choice for consumers, as well as IT professionals. The wireless portfolio is enterprise grade with robust security and a rich set of networking capabilities.

ProSAFE Wireless Management



	ProSAFE Premium Wireless Controller	ProSAFE Wireless Controller	ProSAFE Wireless Controller
MODEL	WC9500	WC7600	WC7520
Product Description	ProSafe WC9500 Wireless Controller	ProSafe WC7600 Wireless Controller	ProSafe 20-AP Wireless Controller
Typical Deployment	Mid to large enterprise with premium Wi-Fi, colleges/universities, hotels, mid-sized healthcare	Medium enterprise with high throughput and high density Wi-Fi, K-12, hotels/motels, small hospitals	Medium enterprise with advanced Wi-Fi, K-12, small hotels/motels, small hospitals
HARDWARE			
# of Ethernet Ports	3	3	4
Speed of Ethernet Ports	2 x 1 Gbps (RJ-45) 1 x 10 Gbps (SFP+)	2 x 1 Gbps (RJ-45) 1 x 10 Gbps (SFP+)	10/100/1000 Mbps
Physical Size	440 x 430 x 43 mm	440 x 430 x 43 mm	261 x 430 x 440 mm
SUPPORTED AP			
WND930			
WNDAP660			
WNDAP620			
WNDAP360			
WNDAP350			
WNAP320			
WNAP210			
WN370			
CAPACITY			
# of managed AP	600	150	150
Stacking			
# of units per stack	3	3	3
MANAGEMENT			
HTTP			
SNMP			
Telnet			
SSH			
FEATURES			
Central configuration			
Multiple SSIDs, VLANs			
Automatic RF Management	Dynamic	Dynamic	Dynamic
Predeployment RF Planning			
Postdeployment RF calibration with Heatmap			
Self healing wireless network			
Dynamic load balancing			
L2 and L3 fast roaming			
Built-in AAA server, LDAP support			

ProSAFE Access Points

Wireless Access Points

NETGEAR Wireless Access Points are ideal for extending an existing Ethernet network to areas that cabling cannot reach, or to provide easier connectivity for employees, visitors, or a mobile workforce.



MODEL	WN604	WAC120	NEW WN203	WN370	WNAP210
Product Description	Wireless-N 150 Access Point	Dual Band 802.11ac Access Point	ProSAFE Wireless-N standalone Access Point	ProSAFE Wireless-N Wall Mount Access Point	ProSAFE Wireless-N Access Point
Typical Deployment	Better-small and home office	High performance small and home office	Small office/home office, small motels, dental offices/clinics	Hotels, motels, school dormitories	Entry level-small to medium enterprise
WIRELESS					
Standard	802.11 b/g/n	802.11 ac	802.11b/g/n	802.11 b/g/n	802.11 b/g/n
Single Band	•		•	•	•
Dual Band		• (Concurrent)			
2.4 GHz	•	•	•	•	•
5 GHz		•			
TX by Rv	1 x 1	2 x 2 (2.4 GHz)	2 x 2	2 x 2	2 x 2
Throughput per Radio	150 Mbps	1.3 Gbps (total)	300 Mbps	300 Mbps	300 Mbps
Max # of Concurrent Clients (standalone)	30	128	30	N/A	64
Max # of Concurrent Clients (managed)			30	64	30
HARDWARE					
# of Ethernet Ports	4	1	1	4 (LAN) + 1 (uplink) 2 (voice)	1
Speed of Ethernet Ports	10/100 Mbps	10/100/1000 Mbps	10/100/1000 Mbps	4 x 10/100 Mbps + 1 (1G) 2 (voice)	10/100/1000 Mbps
PoE			•	•	•
Antenna Type	Detachable	Internal	Internal	Internal	Internal
Antenna Gain	5 dBi	2 dBi	3 dBi	5 dBi	5 dBi
Additional External Antenna Connectors			two 2.4 GHz reverse SMA		
Plenum				•	
Physical Size	175 x 118 x 28 mm	180 x 170 x 60mm	224 x 153 x 28 mm	135 x 93 x 26 mm	224 x 153 x 28 mm
Enclosure Material	Plastic	Plastic	Plastic	Plastic	Plastic
Kensington Lock			•		•
Ceiling/Wall Mounting				wall (junction box)	
Power Consumption	5 Watts	8.1 Watts	5.8 Watts	5.1 Watts	5.8 Watts
MANAGEMENT					
Deployment Options	Standalone only	Standalone	Standalone	Controller	Standalone & controller
Web UI	•	•	•	•	•
CLI		•	•	•	•
Manageable by WMS5316					•
Manageable by WC7520					
Manageable by WC7600				•	•
SSH			•	•	•
SNMP			•	•	•
FEATURES					
# of BSSIDs	1	1	8	8	8
WEP	•	•	•	•	•
WPA-PSK/TKIP	•	•	•	•	•
WPA2-PSK/AES	•	•	•	•	•
802.1X			•	•	•
Rogue AP Detection			•	•	•
WIDS/WIPS					
Wireless Distribution Systems (WDS)	•	•	•	•	
Repeater	•	•	•		•
Point-to-Point/Multi-Point	•	•	•		•
Simultaneous Bridge /Client Association	•	•	•		•
Captive Portal			•	•	•
VLANs			•	•	•
MAC ACL	•	•	•	•	•
802.11e/WMM	•	•	•	•	•
Rate Limiting	•	•	•	•	•
BANDWIDTH MANAGEMENT					
Beamforming					
Bandsteering					
ORDERING					
Warranty	3 years	3 years	Lifetime	Lifetime	Lifetime
Product Ordering SKU	WN604-100NAS WN604-100AUS WN604-100PES WN604-100UKS	WAC120-100NAS WAC120-100AUS WAC120-100PES WAC120-100UKS WAC120-100PRS	WN203-100NAS WN203-100AUS WN203-200PES WN203-100PRS WN203-100UKS	WN370-10000S	WNAP210-100NAS WNAP210-100AUS WNAP210-100PES WNAP210-100PRS WNAP210-100UKS

ProSAFE Antennas

ProSAFE Antennas

ProSAFE antennas can be used in conjunction with Wireless Access Points to boost wireless signals across a building or campus.



MODEL	ANT2407	ANT224D10
Product Description	ProSAFE 7 dBi Omni-directional Antenna	ProSAFE 10 dBi Directional Antenna
Frequency	IEEE 802.11 b/g, 2.4 GHz	IEEE 802.11 n, 2.4 GHz Range: Up to 8,5km
Customer Needs	Indoor (Place close to the Access Point and antenna usage range (line of sight))	Indoor / Outdoor
Polarisation	Vertical	Linear Vertical
Gain	7 dBi	10 dBi
Angle	Horizontal 360° / Vertical 600°	Horizontal 33° / Vertical 32°
Access Points	WG302, WAG102, WG102, WG103, WGL102, WAGL102	WNAP320, WNDAP350, WNDAP360
Antenna Cable (Accessories)		1.5 m ACC-10314-01 5 m ACC-10314-03 10 m ACC-10314-04
Connections	Reverse SMA female	Reverse N/SMA Adapters
Assembly	Includes mounting brackets	Wall mount and pole mounting options
Mass	(H x D x W) 110 x 65 x 300 mm Integrated cable length: 1,5m	(H x D x W) 262 x 240 x 30 mm
Warranty	2 Year	2 Year

* Range estimation is based on two wireless nodes each with an ANT24D18 antenna attached, a NETGEAR 3 m low-loss antenna cable, 10 dBi link budget margin, associating with each other at 11 Mbps under ideal line-of-sight conditions.

** Range estimation is based on two wireless nodes, each with an ANT24O5 antenna attached, a NETGEAR 1.5 m low-loss antenna cable, associating with each other at 11 Mbps under ideal line-of-sight conditions.

Comprehensive Network Security for Your Business

While most network security products for small to medium businesses compromise on coverage, speed, or both, NETGEAR ProSAFE security products provide best-of-breed security without compromise.

ProSAFE VPN Firewalls – Value for small and medium businesses



NETGEAR ProSAFE VPN Firewall routers provide secure remote network access to help keep businesses safe from network attacks and unauthorised access. ProSAFE Security VPN firewall routers deliver full network access between headquarter locations, remote/branch offices, and telecommuters while ProSAFE Security wireless VPN firewall routers are ideal for remote/branch offices and telecommuters. All models deliver a comprehensive suite of business-class security.

VPN Client Software



MODEL	VPN CLIENT PROFESSIONAL SOFTWARE VPNG01L/VPNG05L
Product Description	ProSAFE VPN Client Professional Software, available in Single and Five User License
Features	<ul style="list-style-type: none"> Robust encryption and authentication NAT traversal support GUI for configuring security policies and managing certificates Redundant gateway capability Extensive interoperability with IPSec-compliant devices Preset configuration files available for NETGEAR® VPN/Firewall routers
Netgear®-Compatible Devices	Compatible with multiple Microsoft Windows platforms including Windows 7
VPNc Certified	Basic Interop
Snmp Device Compatible	N/A
Warranty	90-Day Media warranty

ProSAFE VPN Firewalls

Reliable, affordable and easy to use business class security

NETGEAR ProSAFE VPN (Virtual Private Network) Firewalls ensure maximum privacy and security with high - level encryption.



MODEL	FVS336G	FVS318N
Product Description	ProSAFE® Dual WAN Gigabit Firewall with SSL & IPsec VPN	ProSAFE® 802.11n Wireless SSL & IPsec VPN Gigabit Firewall
CONNECTIVITY		
Gigabit Ports WAN/LAN	1/8	1/8
DMZ Interfaces (Configurable)	1	1
Wireless		a/b/g/n
IPv6 Support	Yes	Yes
PERFORMANCE		
LAN-to-WAN Throughput	250 Mbps	250 Mbps
IPsec VPN (3DES) Throughput	30 Mbps	5 Mbps
SSL VPN Throughput*		30 Mbps
Maximum Concurrent Connections	6,000	6,000
Maximum Number of VLANs	254	254
AUTHENTICATION SUPPORT		
VoIP SIP ALG Compatibility List	Linksys SPA-901, Linksys SPA-941, SNOM M3, Cisco 7940G, X-Lite 3.0 (software for phones), D-Link DPH-140S, Grandstream GXP-2000, Polycom SoundStation 6000, Siemens C450, Aastra 51i	Linksys SPA-901, Linksys SPA-941, SNOM M3, Cisco 7940G, X-Lite 3.0 (software for phones), D-Link DPH-140S, Grandstream GXP-2000, Polycom SoundStation 6000, Siemens C450, Aastra 51i
VPN Pass Through	IPsec, PPTP, L2TP	IPsec, PPTP, L2TP
NETWORKING		
WAN Modes	NAT, Classical Routing	NAT, Classical Routing
ISP Address Assignment	DHCP, Static IP Assignment, PPPoE, PPTP	DHCP, Static IP Assignment, PPPoE, PPTP
Routing	Static, Dynamic, RIPv1, RIPv2	Static, Dynamic, RIPv1, RIPv2
DHCP	DHCP Server, DHCP Relay	DHCP Server, DHCP Relay
DDNS	DynDNS.org, TZO.com, Oray.net, 3322.org	DynDNS.org, TZO.com, Oray.net, 3322.org
VLANs		802.1Q
WAN Fail-over		
WAN Load Balancing Modes		
VPN		
IPsec Encryption/Authentication	56-bit DES, 168-bit 3DES, AES(128, 192, 256 bit)/SHA-1, MD5	56-bit DES, 168-bit 3DES, AES(128, 192, 256 bit)/SHA-1, MD5
IPsec NAT Traversal (VPN Passthrough)	•	•
IPsec Access Modes	56-bit DES, 168-bit 3DES, AES(128, 192, 256 bit)/SHA-1, MD5	56-bit DES, 168-bit 3DES, AES(128, 192, 256 bit)/SHA-1, MD5
SSL Encryption Support		DES, 3DES, ARC4, AES(ECB, CBC, XCBC, CNTR)128, 256 bit
SSL VPN Platforms Supported		Windows 2000/XP/Vista (32bit), Windows 8 and 8.1, MAC OS X 10.4+
HARDWARE		
Processor Speed	500 MHz	300 MHz
Dimensions/Weight	(W x D x H) 19 x 3.5 x 12.5 cm Weight: 0.59 kg	(W x D x H) 19 x 3.5 x 12.5 cm Weight: 0.59 kg
Package Contents	Ethernet Cable, Power Adapter, Install Guide, Resource CD, Warranty Card	Ethernet Cable, Power Adapter, Install Guide, Resource CD, Warranty Card
ORDERING		
Hardware Warranty	Lifetime	Lifetime
Next Business Day Replacement	Lifetime	Lifetime
Technical Support	Lifetime	Lifetime
Product Ordering SKU	FVS318G-200NAS FVS318G-200EUS FVS318G-200AUS	FVS318N-100NAS FVS318N-100NAS FVS318N-100NAS
ACCESSORIES		
ProSafe VPN Client Software	VPNG01L (1-User), VPNG05L (5-User)	VPNG01L (1-User), VPNG05L (5-User)



FVS336G	SRX5308
ProSAFE® Dual WAN Gigabit Firewall with SSL & IPsec VPN	ProSAFE® Quad WAN Gigabit Firewall with SSL & IPsec VPN
2/4	4/4
1	1
Yes	Yes
350 Mbps	924 Mbps
78 Mbps	180 Mbps
14 Mbps	21 Mbps
10,000	200,000
254	254
Linksys SPA-901, Linksys SPA-941, SNOM M3, Cisco 7940G, X-Lite 3.0 (software for phones), D-Link DPH-140S, Grandstream GXP-2000, Polycom SoundStation 6000, Siemens C450, Aastra 51i	Linksys SPA-901, Linksys SPA-941, SNOM M3, Cisco 7940G, X-Lite 3.0 (software for phones), D-Link DPH-140S, Grandstream GXP-2000, Polycom SoundStation 6000, Siemens C450, Aastra 51i
IPsec, PPTP, L2TP	IPsec, PPTP, L2TP
NAT, Classical Routing	NAT, Classical Routing
DHCP, Static IP Assignment, PPPoE, PPTP	DHCP, Static IP Assignment, PPPoE, PPTP
Static, Dynamic, RIPv1, RIPv2	Static, Dynamic, RIPv1, RIPv2
DHCP Server, DHCP Relay	DHCP Server, DHCP Relay
DynDNS.org, TZO.com, Oray.net, 3322.org	DynDNS.org, TZO.com, Oray.net, 3322.org
802.1Q	802.1Q
•	•
Weighted Load Balancing, Round Robin	Weighted Load Balancing, Round Robin
56-bit DES, 168-bit 3DES, AES(128, 192, 256 bit)/SHA-1, MD5	56-bit DES, 168-bit 3DES, AES(128, 192, 256 bit)/SHA-1, MD5
•	•
DES, 3DES, ARC4, AES(ECB, CBC, XCBC, CNTR)128, 256 bit	DES, 3DES, ARC4, AES(ECB, CBC, XCBC, CNTR)128, 256 bit
Windows 2000/XP/Vista (32bit), Windows 8 and 8.1, MAC OS X 10.4+	Windows 2000/XP/Vista (32bit), Windows 8 and 8.1, MAC OS X 10.4+
500 MHz	300 MHz
(W x D x H) 19 x 3.5 x 12.5 cm Weight: 0.59 kg	(W x D x H) 19 x 3.5 x 12.5 cm Weight: 0.59 kg
Ethernet Cable, Power Adapter, Install Guide, Resource CD, Warranty Card	Ethernet Cable, Power Adapter, Install Guide, Resource CD, Warranty Card
Lifetime	Lifetime
Lifetime	Lifetime
Lifetime	Lifetime
FVS336G-300NAS FVS336G-300EUS FVS336G-300AUS	SRX5308-100NAS SRX5308-100EUS SRX5308-100AUS
VPNG01L (1-User), VPNG05L (5-User)	VPNG01L (1-User), VPNG05L (5-User)



NETGEAR ReadyNAS® & ReadyDATA® Storage Systems

ReadyNAS®: Every network-attached storage (NAS) device from NETGEAR is built on the revolutionary ReadyNAS operating system. ReadyNAS is a powerful and easy-to-use storage solution for small and medium businesses. ReadyNAS delivers robust solutions for file serving, backup, disaster recovery, Virtualisation, and private cloud needs. In its class, ReadyNAS devices are the only solutions that enable continuous data protection with features such as unlimited snapshots for point-in-time data restore, real-time anti-virus protection, and native encryption capabilities. Designed specifically for the unique needs of small business users, ReadyNAS devices utilise proprietary ReadyCLOUD technology for cloud-based discovery, provisioning, and ongoing management. ReadyNAS is storage made easy.

ReadyDATA™: Every ReadyDATA device ships with a full suite of advanced features such as block-level replication, deduplication, and thin provisioning, making them ideal for projects that require high performance file-sharing, backup, disaster recovery, or support for virtual infrastructures. ReadyDATA devices can scale to 360TB of capacity and support SAS, SATA, and SSD disk formats - enabling businesses to meet high performance or raw capacity needs. ReadyDATA redefines the concept of storage for small and medium businesses, remote offices/branch offices, and departments within enterprise organisations. ReadyDATA integrates a full suite of granular monitoring, reporting and chargeback utilities for organisations or resellers looking to offer a managed service model. ReadyDATA is enterprise-class technology built for the SMB.



ReadyNAS Comparison Chart

Storage Made Easy for Home and Business



	READYNAS 102	READYNAS 104	READYNAS 202	READYNAS 204
Product Description	2-Bay Desktop	2-Bay Desktop	2-Bay Desktop	4-Bay Desktop
Total Solution Capacity	12 TB	24 TB	12 TB	24 TB
File Protocols	NFS, CIFS/SMB, AFP, HTP(S), FTP(S), WebDAV	NFS, CIFS/SMB, AFP, HTP(S), FTP(S), WebDAV	NFS, CIFS/SMB, AFP, HTTP(S), FTP(S), WebDAV	NFS, CIFS/SMB, AFP, HTTP(S), FTP(S), WebDAV
Block Protocols	iSCSI	iSCSI	iSCSI	iSCSI
File System	BTRFS	BTRFS	BTRFS	Desktop SATA
Populated Drives	Desktop SATA	Desktop SATA	Desktop SATA	Desktop/Enterprise SATA
Gigabit Ethernet Ports	1	2	2	2
10G Ethernet Port	0	0	0	0
Supports EDA500 Expansion Chassis	No	No	No	No
Reliability Features	Hot Swappable Disks	Hot Swappable Disks Network Failover	Hot Swappable Disks Network Failover	Hot Swappable Disks Network Failover
CPU	Marvell Armada 370 1.2GHz	Marvell Armada 370 1.2GHz	Marvell Annapurna AL212 Dual Core 1.4GHz High Performance ARM Cortex A15	Marvell Annapurna AL212 Dual Core 1.4GHz High Performance ARM Cortex A15
Memory	512 MB	512 MB	2 GB	2 GB
RAID Level Supported	RAID 0,1	RAID 0,1	RAID 0,1	RAID 0,1,5,6,10
Auto Volume Expansion	X-RAID2	X-RAID2	X-RAID2	X-RAID2
Unique Features	<p>Most versatile and secure remote access:</p> <ul style="list-style-type: none"> - ReadyCLOUD Collaboration, Sync & Backup - ReadyCLOUD automated VPN <p>5 Levels of data protection:</p> <ul style="list-style-type: none"> - XRAID - Hourly protection of data with performance-neutral snapshots - Real-Time Antivirus - Protection against silent data corruption x"Bitrot") - Integrated, web-managed replication for disaster recovery or ReadyNAS Vault / backup to the cloud 	<p>Most versatile and secure remote access:</p> <ul style="list-style-type: none"> - ReadyCLOUD Collaboration, Sync & Backup - ReadyCLOUD automated VPN <p>5 Levels of data protection:</p> <ul style="list-style-type: none"> - XRAID - Hourly protection of data with performance-neutral snapshots - Real-Time Antivirus - Protection against silent data corruption x"Bitrot") - Integrated, web-managed replication for disaster recovery or ReadyNAS Vault / backup to the cloud 	<p>Most versatile and secure remote access:</p> <ul style="list-style-type: none"> - ReadyCLOUD Collaboration, Sync & Backup - ReadyCLOUD automated VPN <p>5 Levels of data protection:</p> <ul style="list-style-type: none"> - XRAID - Hourly protection of data with performance-neutral snapshots - Real-Time Antivirus - Protection against silent data corruption x"Bitrot") - Integrated, web-managed replication for disaster recovery or ReadyNAS Vault / backup to the cloud 	<p>Most versatile and secure remote access:</p> <ul style="list-style-type: none"> - ReadyCLOUD Collaboration, Sync & Backup - ReadyCLOUD automated VPN <p>5 Levels of data protection:</p> <ul style="list-style-type: none"> - XRAID - Hourly protection of data with performance-neutral snapshots - Real-Time Antivirus - Protection against silent data corruption x"Bitrot") - Integrated, web-managed replication for disaster recovery or ReadyNAS Vault / backup to the cloud
Onboard Backup Options	ReadyCLOUD user directory backup Remote & Local Time Machine	ReadyCLOUD user directory backup Remote & Local Time Machine	ReadyCLOUD user directory backup Remote & Local Time Machine	ReadyCLOUD user directory backup Remote & Local Time Machine
Vmware Ready	Yes	Yes	Yes	Yes
ReadyNAS Replicate (License Option)	Embedded, no additional license needed	Embedded, no additional license needed	Embedded, no additional license needed	Embedded, no additional license needed
Warranty (System)	3 year standard warranty	3 year standard warranty	3 year standard warranty	3 year standard warranty
ProSUPPORT Service Options	Oncall 24x7: PMB0311, PMB0331, PMB0351	Oncall 24x7: PMB0311, PMB0331, PMB0351 XPressHW: PRR0331, PRR0351	Oncall 24x7: PMB0311, PMB0331, PMB0351 XPressHW: PRR0331, PRR0351	Oncall 24x7: PMB0311, PMB0331, PMB0351
System SKUs	RN10200 RN10211D RN10212D RN10221D RN10222D RN10223D	RN10400 RN10421D RN10441D RN10442D	RN20200 RN20221D RN20222D	RN20400 RN20441D RN20442D



READYNAS 312	READYNAS 314	READYNAS 316	READYNAS 516	READYNAS 716
2-Bay Desktop	4-Bay Desktop	6-Bay Desktop	6-Bay Desktop	6-Bay Desktop
12 (32) TB	12 TB	36 (76) TB	36 (96) TB	36 (96) TB
NFS, CIFS/SMB, AFP, HTTP(S), FTP(S), WebDAV	NFS, CIFS/SMB, AFP, HTTP(S), FTP(S), WebDAV	NFS, CIFS/SMB, AFP, HTTP(S), FTP(S), WebDAV	NFS, CIFS/SMB, AFP, HTTP(S), FTP(S), WebDAV	NFS, CIFS/SMB, AFP, HTTP(S), FTP(S), WebDAV
iSCSI	iSCSI	iSCSI	iSCSI	iSCSI
BTRFS	BTRFS	BTRFS	BTRFS	BTRFS
Desktop/Enterprise SATA	Desktop/Enterprise SATA	Desktop/Enterprise SATA	Enterprise SATA	Enterprise SATA
2	2	2	2	2
0	0	0	0	2 (10GBaseT)
Yes	Yes	Yes	Yes	Yes
Hot Swappable Disks Network Failover	Hot Swappable Disks Network Failover	Hot Swappable Disks Network Failover	Hot Swappable Disks Network Failover ECC Memory	Hot Swappable Disks Network Failover ECC Memory
Intel Atom 2.1GHz Dual Core	Intel Atom 2.1GHz Dual Core	Intel Atom 2.1GHz Dual Core	Intel Core i3-3220 3.3GHz Dual Core	Intel Xeon E3-1265Lv2 2.5GHz (3.5GHz turbo) Quad Core
2 GB	2 GB	2 GB		16GB ECC
RAID 0,1	RAID 0,1,5,6,10	RAID 0,1,5,6,10	RAID 0,1,5,6,10	RAID 0,1,5,6,10
X-RAID2	X-RAID2	X-RAID2	X-RAID2	X-RAID2
Most versatile and secure remote access: - ReadyCLOUD Collaboration, Sync & Backup - ReadyCLOUD automated VPN 5 Levels of data protection: - XRAID - Hourly protection of data with performance-neutral snapshots - Real-Time Antivirus - Protection against silent data corruption x"Bitrot" - Integrated, web-managed replication for disaster recovery or ReadyNAS Vault / backup to the cloud	Most versatile and secure remote access: - ReadyCLOUD Collaboration, Sync & Backup - ReadyCLOUD automated VPN 5 Levels of data protection: - XRAID - Hourly protection of data with performance-neutral snapshots - Real-Time Antivirus - Protection against silent data corruption x"Bitrot" - Integrated, web-managed replication for disaster recovery or ReadyNAS Vault / backup to the cloud	Most versatile and secure remote access: - ReadyCLOUD Collaboration, Sync & Backup - ReadyCLOUD automated VPN 5 Levels of data protection: - XRAID - Hourly protection of data with performance-neutral snapshots - Real-Time Antivirus - Protection against silent data corruption x"Bitrot" - Integrated, web-managed replication for disaster recovery or ReadyNAS Vault / backup to the cloud	Most versatile and secure remote access: - ReadyCLOUD Collaboration, Sync & Backup - ReadyCLOUD automated VPN 5 Levels of data protection: - XRAID - Hourly protection of data with performance-neutral snapshots - Real-Time Antivirus - Protection against silent data corruption x"Bitrot" - Integrated, web-managed replication for disaster recovery or ReadyNAS Vault / backup to the cloud	Most versatile and secure remote access: - ReadyCLOUD Collaboration, Sync & Backup - ReadyCLOUD automated VPN 5 Levels of data protection: - XRAID - Hourly protection of data with performance-neutral snapshots - Real-Time Antivirus - Protection against silent data corruption x"Bitrot" - Integrated, web-managed replication for disaster recovery or ReadyNAS Vault / backup to the cloud
ReadyCLOUD user directory backup Remote & Local Time Machine	ReadyCLOUD user directory backup Remote & Local Time Machine	ReadyCLOUD user directory backup Remote & Local Time Machine	ReadyCLOUD user directory backup Remote & Local Time Machine	ReadyCLOUD user directory backup Remote & Local Time Machine
Yes	Yes	Yes	Yes	Yes
Embedded, no additional license needed	Embedded, no additional license needed	Embedded, no additional license needed	Embedded, no additional license needed	Embedded, no additional license needed
5 year standard warranty	5 year standard warranty	5 year standard warranty	5 year standard warranty	5 year standard warranty
Oncall 24x7: PMB0312, PMB0332, PMB0352	Oncall 24x7: PMB0312, PMB0332, PMB0352	Oncall 24x7: PMB0312, PMB0332, PMB0352	Oncall 24x7: PMB0313, PMB0333, PMB0353	Oncall 24x7: PMB0313, PMB0333, PMB0353
RN31200 RN31211D RN31212D RN31221D RN31222D	RN31400 RN31421D RN31441D RN31442D RN31441E RN31442E RN31443E	RN31600 RN31661D RN31662D RN31664D RN31661E RN31662E RN31663E RN31664E	RN51600 RN51661E RN51662E RN51663E RN51664E	RN716X

ReadyNAS Comparison Chart

Storage Made Easy for Business



	READYNAS 2120	READYNAS 3130
Product Description	1U Rackmount, 4-Bays	1U Rackmount, 4-Bays
Total Solution Capacity	24 TB	24 TB
File Protocols	NFS, CIF/SMB, AFP, HTTP(S), FTP(S), WebDAV	NFS, CIF/SMB, AFP, HTTP(S), FTP(S), WebDAV
Block Protocols	iSCSI	iSCSI
File System	BTRFS	BTRFS
Populated Drives	Desktop/Enterprise SATA	Desktop/Enterprise SATA
Gigabit Ethernet Ports	2	4
10G Ethernet Port	0	0
Reliability Features	Hot Swappable Disks Network Failover	Hot Swappable Disks Network Failover
CPU	Marvell Armada XP 1.2GHz Dual Core	Intel Atom Dual Core (C2338) 1.7GHz processor
Memory	2 GB	2 GB ECC
RAID Level Supported	RAID 0,1,5,6,10	RAID 0,1,5,6,10
Auto Volume Expansion	X-RAID2	X-RAID2
Unique Features	Most versatile and secure remote access: - ReadyCLOUD Collaboration, Sync & Backup - ReadyCLOUD automated VPN 5 Levels of data protection: - XRAID - Hourly protection of data with performance-neutral snapshots - Real-Time Antivirus - Protection against silent data corruption ("Bitrot") - Integrated, web-managed replication for disaster recovery or ReadyNAS Vault / backup to the cloud	Most versatile and secure remote access: - ReadyCLOUD Collaboration, Sync & Backup - ReadyCLOUD automated VPN 5 Levels of data protection: - XRAID - Hourly protection of data with performance-neutral snapshots - Real-Time Antivirus - Protection against silent data corruption ("Bitrot") - Integrated, web-managed replication for disaster recovery or ReadyNAS Vault /backup to the cloud
Onboard Backup Options	ReadyCLOUD user directory backup Remote & Local Time Machine	ReadyCLOUD user directory backup Remote & Local Time Machine
Vmware Ready	Yes	Yes
ReadyNAS Replicate (License Option)	Embedded, no additional license needed	Embedded, no additional license needed
Warranty (System)	5 year standard warranty	5 year standard warranty
ProSUPPORT Service Options	Oncall 24x7: PMB0312, PMB0332, PMB0352	Oncall 24x7: PMB0312, PMB0332, PMB0352
System SKUs	PMB0312 PMB0332 PMB0352	PMB0312 PMB0332 PMB0352



READYNAS 3220	READYNAS 4220S	READYNAS 4220X
2U Rackmount, 12-Bays	2U Rackmount, 12-Bays	2U Rackmount, 12-Bays
72 TB	72 TB	72 TB
NFS, CIF/SMB, AFP, HTTP(S), FTP(S), WebDAV	NFS, CIF/SMB, AFP, HTTP(S), FTP(S), WebDAV	NFS, CIF/SMB, AFP, HTTP(S), FTP(S), WebDAV
iSCSI	iSCSI	iSCSI
BTRFS	BTRFS	BTRFS
Enterprise SATA	Enterprise SATA	Enterprise SATA
4	4	4
0	2 (SFP+)	2 (10GBaseT)
Hot Swappable Disks Network Failover	Hot Swappable Disks Network Failover	Hot Swappable Disks Network Failover
Intel Core i3-3220v2 3.3GHz Dual Core	Intel Xeon E3-1225V2 3.2GHz Quad Core	Intel Xeon E3-1225V2 3.2GHz Quad Core
4GB ECC	8GB ECC	8GB ECC
RAID 0,1,5,6,10	RAID 0,1,5,6,10	RAID 0,1,5,6,10
X-RAID2	X-RAID2	X-RAID2
Most versatile and secure remote access: - ReadyCLOUD Collaboration, Sync & Backup - ReadyCLOUD automated VPN	Most versatile and secure remote access: - ReadyCLOUD Collaboration, Sync & Backup - ReadyCLOUD automated VPN	Most versatile and secure remote access: - ReadyCLOUD Collaboration, Sync & Backup - ReadyCLOUD automated VPN
5 Levels of data protection: - XRAID - Hourly protection of data with performance-neutral snapshots - Real-Time Antivirus - Protection against silent data corruption ("Bitrot") - Integrated, web-managed replication for disaster recovery or ReadyNAS Vault / backup to the cloud	5 Levels of data protection: - XRAID - Hourly protection of data with performance-neutral snapshots - Real-Time Antivirus - Protection against silent data corruption ("Bitrot") - Integrated, web-managed replication for disaster recovery or ReadyNAS Vault / backup to the cloud	5 Levels of data protection: - XRAID - Hourly protection of data with performance-neutral snapshots - Real-Time Antivirus - Protection against silent data corruption ("Bitrot") - Integrated, web-managed replication for disaster recovery or ReadyNAS Vault / backup to the cloud
ReadyCLOUD user directory backup Remote & Local Time Machine	ReadyCLOUD user directory backup Remote & Local Time Machine	ReadyCLOUD user directory backup Remote & Local Time Machine
Yes	Yes	Yes
Embedded, no additional license needed	Embedded, no additional license needed	Embedded, no additional license needed
5 year standard warranty with 3 year NBD HW Replacement	5 year standard warranty with 3 year NBD HW Replacement	5 year standard warranty with 3 year NBD HW Replacement
Oncall 24x7: PMB0314, PMB0334, PMB0355	Oncall 24x7: PMB0314, PMB0334, PMB0355	Oncall 24x7: PMB0314, PMB0334, PMB0355
RN3220 RN32262E RN32263E RN32264E RN32264E RN322122E RN322123E RN322124E	RN4220S	RN4220X RN422X62E RN422X63E RN422X64E RN422X122 RN422X123 RN422X124

ReadyDATA™ Network storage for business solutions

Enterprise-class Features Designed for a Businesses of Any Size



FAMILY	READYDATA 5200	READYDATA 516
MODELS	RD5200 2U diskless controller, diverse drive packs, EDA2000 2U 12-Bay expansion unit, EDA4000 4U 24-Bay expansion unit	RDD516 Desktop Chassis, SATA and SSD drive packs
Product Description	ReadyDATA is a unified storage (NAS/SAN) platform featuring ZFS-based storage technology designed for businesses of any size. The ReadyDATA 5200 is highly scalable, rackmount unified storage (NAS and SAN) that features enterprise-class technology without the cost and complexity of traditional enterprise offerings.	ReadyDATA is a unified storage (NAS/SAN) platform featuring ZFS-based storage technology designed for businesses of any size. The ReadyDATA 516 liberates enterprise storage features from the datacentre, delivering the most affordable block-based replication solution for Centralised backup of branch office environments.
HARDWARE		
Maximum Number of Drive Bays	60	6
Drive Types Supported	3.5" SAS/NL-SAS/SATA/SSD, SSD Caching	3.5" SATA/SSD, SSD Caching
Total Solution Capacity	360 TB	36 TB
Form Factor	Rack mount 2U with optional expansion units (2U and 4U)	Desktop/Pedestal
Expansion Trays	Up to two expansion units with 12 and 24 bays	Not Supported
Dimensions (H x W x D)	89 x 437 x 648 (mm)	259 x 192 x 287.5 (mm)
Redundancy	Hot swappable disks, redundant power supplies redundant fans, ECC Memory	Hot swappable disks, ECC Memory
Accessories	Rack kit, redundant power supplies, and power cables included	Power supply and power cable included
Warranty	5 years with next business day hardware replacement included for the first 3 years	5 years with next business day hardware replacement included for the first 3 years
NETWORK		
Ports	2 x 10/100/1000 Mbps Ethernet Ports with Load Balancing and Failover 2 x 10 GE Ethernet Ports with Load Balancing and Failover (SFP+) 2 USB 2.0 Ports	2 x 10/100/1000 Mbps Ethernet Ports with Load Balancing and Failover 1 x USB 2.0, 2 x USB 3.0
Features	Virtual Network Interfaces (VNICs), DHCP or Static IP Address assignment, LACP Support for Load Balancing and Failover	Virtual Network Interfaces (VNICs), DHCP or Static IP Address assignment, LACP Support for Load Balancing and Failover
Protocol Support	SMB, AFP, NFS, iSCSI, HTTP/S, FTP/S, IPv6, SNMP, SSH, SSL	SMB, AFP, NFS, iSCSI, HTTP/S, FTP/S, IPv6, SNMP, SSH, SSL
DATA PROTECTION		
RAID Levels	0, 1, 5, 6, 10, 50, 60	0, 1, 5, 6, 10, 50, 60
RAID Global Hot Spare	Supported	Supported
Snapshots	Configure unlimited Hourly, Daily, Weekly scheduled block-based snapshots for Continuous Data Protection.	Configure unlimited Hourly, Daily, Weekly scheduled block-based snapshots for Continuous Data Protection.
Replication	Encrypted remote replication can be locally-managed or cloud-managed (ReadyDATA to ReadyDATA).	Encrypted remote replication can be locally-managed or cloud-managed (ReadyDATA to ReadyDATA).
Backup Software Support	Supports Backup applications from Acronis, Quest, StorageCraft, Symantec, VEEAM	Supports Backup applications from Acronis, Quest, StorageCraft, Symantec, VEEAM
VOLUME MANAGEMENT		
Provisioning	Instant Volume Creation & Expansion with Thick and Thin Provisioning	Instant Volume Creation & Expansion with Thick and Thin Provisioning
Capacity Efficiency	Compression and Deduplication	Compression and Deduplication
Performance Boost	SSD caching for performance boost	SSD caching for performance boost
STORAGE AREA NETWORK (SAN)		
iSCSI	Thin provisioning, Unlimited snapshots, SPC-3 Persistent Reservation (iSCSI)	Thin provisioning, Unlimited snapshots, SPC-3 Persistent Reservation (iSCSI)
Operating System Support	VMware vSphere 5, Citrix XenServer 6, Windows Hyper-V Server 2008 & 2012, Windows Server 2008 R2 & 2012, Linux, UNIX, Solaris	VMware vSphere 5, Citrix XenServer 6, Windows Hyper-V Server 2008 & 2012, Windows Server 2008 R2 & 2012, Linux, UNIX, Solaris
AVAILABLE SKUS		
Controller and Expansion Units	RD5200-100WWS - ReadyDATA 5200 Base Unit EDA2000-100WWS - ReadyDATA 2U 12-Bay Expansion EDA4000-100WWS - ReadyDATA 2U 24-Bay Expansion	RDD516-100 - ReadyDATA 516 Desktop Unit
SATA Drive Packs	RD5D1LT01-100WWS - 1 X 1TB SATA HDD Drive Pack RD5D1LT02-100WWS - 1 X 2TB SATA HDD Drive Pack RD5D1LT03-100WWS - 1 X 3TB SATA HDD Drive Pack RD5D1LT04-10000S - 1 X 4TB SATA HDD Drive Pack	RDD1LT02-10000S - 1 x 2TB SATA HDD Drive Pack RDD1LT03-10000S - 1 x 3TB SATA HDD Drive Pack RDD1LT04-10000S - 1 x 4TB SATA HDD Drive Pack
NL-SAS Drive Packs	RD5D1LN01-100WWS - 1 X 1TB NL-SAS HDD Drive Pack RD5D1LN02-100WWS - 1 X 2TB NL-SAS HDD Drive Pack RD5D1LN03-100WWS - 1 X 3TB NL-SAS HDD Drive Pack	Not Supported
SAS Drive Packs	RD5D1LS01-100WWS - 1 X 300GB SAS HDD Drive Pack RD5D1LS02-100WWS - 1 X 450GB SAS HDD Drive Pack RD5D1LS03-100WWS - 1 X 600GB SAS HDD Drive Pack	Not Supported
SSD Drive Packs	RD5D1SC01-100WWS - 1 x 50GB Write Cache SLC Drive Pack RD5D1SM01-100WWS - 1 x 100GB Read Cache MLC Drive Pack RD5D1SM02-100WWS - 1 x 200GB Read Cache MLC Drive Pack	RDD1SM01-10000S - 1 X 100GB Read/Write Cache MLC Drive Pack
PROSUPPORT		
OnCall 24x7 Phone Support	PMB0314 - OnCall 24x7, (1 Year) PMB0334 - OnCall 24x7, (3 Year) PMB0354 - OnCall 24x7, (5 Year)	PMB0313 - OnCall 24x7, (1 Year) PMB0333 - OnCall 24x7, (3 Year) PMB0353 - OnCall 24x7, (5 Year)
Professional Services	PSB 0304 -10000S - Professional Setup and Configuration (Remote) PSP 1104 -10000S - Professional Setup and Configuration (Onsite)	PSB 0304 -10000S - Professional Setup and Configuration (Remote) PSP 1104 -10000S - Professional Setup and Configuration (Onsite)

NETGEAR ReadyRECOVER™

ReadyRECOVER™ is a complete backup and recovery appliance designed for small and medium-sized business. Next-generation file system technology guarantees data integrity, efficient use of storage capacity and minimal impact to computing resources.

With ReadyRECOVER, incremental snapshots, taken as often as every 15 minutes, generate full backups instantly. Each point in time backup is ready to quickly and reliably recover Windows systems, including Microsoft SQL, Exchange, and SharePoint servers, into production mode on any platform – physical or virtual. Each backup is also ready for fast, simple recovery of files or folders.

The challenges of traditional full backup techniques are solved with ReadyRECOVER delivering the speed and space savings of light-weight, incremental snapshots coupled with the benefits delivered by full backups including a simplified backup chain and retention process.

ReadyRECOVER is a seamless integration of the ReadyDATA unified storage platform from NETGEAR and ShadowProtect backup and disaster recovery software from StorageCraft.



ReadyRECOVER at a Glance

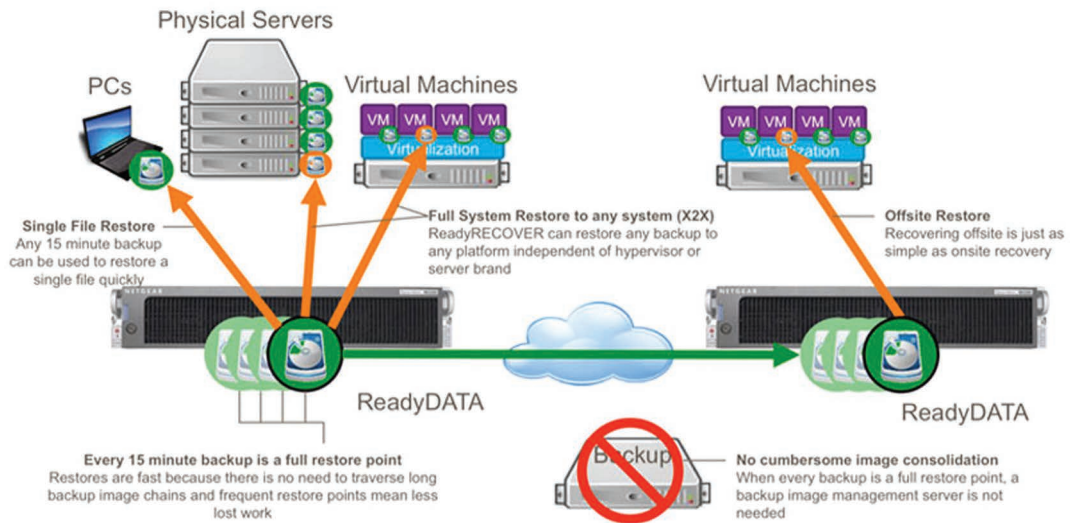
End Time and Space-Eating Full Backups, Forever!

ReadyRECOVER – the most elegant Backup-solution for medium-sized businesses

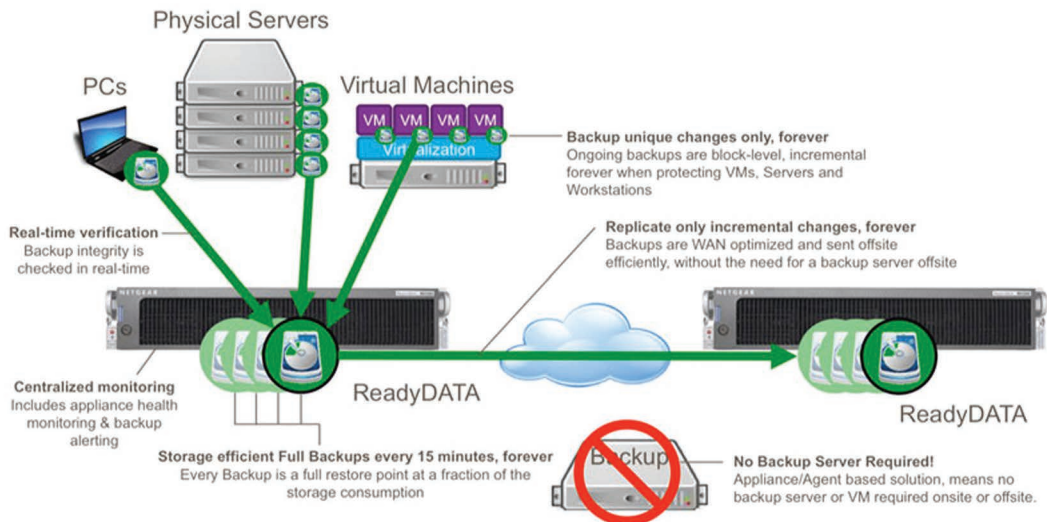
- Fast and frequent backups, using block-level incremental forever technology. After the first full backup, never again run a slow running full backup. Most backup software claims to include incremental forever technology, but do not truly deliver on “forever” and often require monthly or yearly full backups, with incremental backups in between.
- Real-time verification on write, means backups can run around the clock without the need for verification jobs or maintenance operations.
- Centralised monitoring and alerting of backup tasks, agent health, storage consumption, and RAID/disk state.
- WAN optimised replication means only unique backup data is ever replicated, delivering significant bandwidth savings.
- Support for Windows-based servers, virtual machines, workstations and laptops with support for all major Virtualisation platforms including VMware, Hyper-V and XenServer.

MODEL	ANT224D10
RRSERV01-10000S	StorageCraft ShadowProtect Server Edition
RRVIRT01-10000S	StorageCraft ShadowProtect Virtual Server Edition
RRDESK01-10000S	StorageCraft ShadowProtect Desktop Edition
RRGRE01-10000S	ReadyRECOVER Granular Restore for Exchange
RRSBS01-10000S	ReadyRECOVER Small Business Server Edition
MAINTENANCE (1YEAR INCLUDED)	DESCRIPTION
MRRSERV1-10000S	ReadyRECOVER Server Edition One-year Maintenance Extension
MRRVIRT1-10000S	ReadyRECOVER Virtual Server Edition One-year Maintenance Extension
MRRDESK1-10000S	ReadyRECOVER Desktop Edition One-year Maintenance Extension
MRRSBS1-10000S	ReadyRECOVER SBS Edition One-year Maintenance Extension
MRRGRE1-10000S	ReadyRECOVER Granular Restore for Exchange One-year Maintenance Extension

The ReadyRECOVER Backup and Storage Architecture



The ReadyRECOVER Restoration Options





NETGEAR ProSUPPORT™

ProSUPPORT Service Offerings (USA, Canada, Australia & Select European Countries¹)

NETGEAR is the only networking vendor to offer Lifetime 24/7 Technical Support* for business products.



We have also enhanced and simplified Next Business Day (NBD) shipping coverage to align with NETGEAR industry-leading hardware warranties at no extra cost to now deliver:

- Lifetime Warranty and Lifetime NBD for ProSAFE series products
- 5 year Warranty and 5 years NBD for ReadyNAS* / ReadyDATA products

The NBD change represents an upgrade at no extra cost from the previous three-year coverage that was provided on select ProSAFE, ReadyNAS and ReadyDATA medium enterprise grade products.

ProSAFE switching, wireless and firewall products with Lifetime Hardware Warranties receive Lifetime Next Business Day Shipping and Lifetime Chat support.



ReadyNAS* and ReadyDATA storage products that already offer an industry-leading 5 year Hardware Warranty now include 5 year Next Business Day Shipping coverage for the base unit and NETGEAR enterprise class hard disk.

Table 1 Warranty and Service Offerings Comparison

BUSINESS WARRANTY PROTECTION*	HARDWARE WARRANTY			NEXT BUSINESS DAY SHIPPING		TECHNICAL SUPPORT (24X7)	
	Lifetime*	5 Years	3 Years	Lifetime*	5 Years	Lifetime Chat	90 Days Phone
PROSAFE®							
Switches: Unmanaged up to Fully managed	✓			✓		✓	✓
Wireless: Controllers and APs	✓			✓		✓	✓
Firewalls	✓			✓		✓	✓
READYNAS®/READYDATA®							
ReadyNAS Desktop - RN300/500/700		✓			✓	✓	✓
ReadyNAS Desktop - RN100			✓				✓
ReadyNAS Rackmount		✓			✓	✓	✓
ReadyNAS Drives: Enterprise Class		✓			✓	✓	✓
ReadyNAS Drives: Desktop Class			✓				
ReadyDATA		✓			✓	✓	✓
ReadyDATA Drives		✓			✓	✓	✓

Footnotes:

¹ Austria, Belgium, Denmark, France, Germany, Ireland, Italy, Luxembourg, Spain, Sweden, Switzerland, The Netherlands & UK

* Not covered by these warranty terms: accessories, software, licenses. ReadyNAS 100 series chassis and Desktop Class Drives in all populated chassis are covered with 3 years warranty and bring-in support. Lifetime Technical Support is provided via free phone support for first 90 days, and via free online chat thereafter. Next Business Day Shipping may not be available in all localities worldwide. Customer should consult their local NETGEAR representative for applicable support services. For more information, see: <http://www.netgear.co.uk/business/documents/prosafe-lifetime-warranty/default.aspx>.

USE NETGEAR TOP CLASS SERVICE TO YOUR ADVANTAGE

NETGEAR understands that the integrity of your customers' networks directly impacts the success of your enterprise. We have designed a flexible service portfolio with various levels of support, enabling you to leverage NETGEAR expertise in a way that is most suitable for you and your customers' needs. Our service offerings ensure that NETGEAR business-class products operate even more efficiently and reliably, enabling you to help customers focus on their core business.

Professional Installation Services

Reduce implementation time and costs using NETGEAR professional installation setup and configuration services for :

- ReadyNAS / ReadyDATA
- ProSAFE Managed or Smart Switches

The service spans pre-deployment planning to service deployment activities, including configuration and verification testing.

Using NETGEAR over the phone expertise and experience during the installation process translates into faster deployment. You reap long-term benefits knowing that your installation follows industry standards and that your product is configured to take full advantage of all included features.

Part Number: PSB0304-10000S Installation Setup and Configuration (Remote)

Extend and Enhance Your Warranty Coverage

NETGEAR ProSUPPORT offerings provide you with peace of mind by extending and enhancing the standard warranty coverage included with a product purchase.

OnCall 24x7 Contract

- Extend the 90-day phone entitlement support warranty
- Access dedicated ProSUPPORT phone numbers*
- Software Maintenance Releases Notification

Available in 1, 3 and 5 years for each product category.

Onsite Hardware Replacement*

NETGEAR offers NBD onsite hardware replacement for select business-class products. Now businesses can maintain critical networks without on premise support staff.

Defective Drive Retention

When a storage drive* becomes defective, the NETGEAR Defective Drive Retention ("DDR") service allows business customers to retain possession of the drive, thus giving them total control over the sensitive and confidential data that are stored within it.

PRODUCT CATEGORY	1	2	3	4
SERVICE				
OnCall 24x7 (1 year)	PMB0311	PMB0312	PMB0313	PMB0314
Onsite NBD Hardware Replace (3 years)*	PMP3131-10000S	PMP3132-10000S	PMP3133-10000S	PMP3134-10000S
Drive Retention* (5 years)		PDR0152	PDR0153	PDR0154

* Dedicated numbers available for USA, UK, France, Germany, Italy. Onsite Hardware Replacement is available for Austria, Belgium, Denmark, France, Germany, Ireland, Italy, Luxembourg, Spain, Sweden, Switzerland, The Netherlands & UK. Defective Drive Retention Covers SATA & SAS drives purchased from NETGEAR in the following countries: Australia, Austria, Belgium, Canada, Denmark, France, Germany, Ireland, Italy, Japan, Luxembourg, Spain, Sweden, Switzerland, The Netherlands, UK and USA.

NETGEAR ProSUPPORT

ProSUPPORT Service Offerings (USA, Canada, Australia & Select European Countries¹)

Category 1		
Model	ProSUPPORT SKU (Term)	
	OnCall 24x7	Onsite NBD
	PMB0351 (5 Yrs.) PMB0331 (3 Yrs.) PMB0311 (1 Yr.)	PMPX1121 (2 Yrs.)
FS105	o	NA
FS108/P	o	NA
FS116	o	NA
FS116P	o	NA
FS726Tv2	o	NA
FS726T	o	NA
FS726TP	o	NA
FS728TLP	o	NA
FS728TP	o	NA
FS728TS	o	NA
FS750T2	o	NA
FS752TP	o	NA
FS752TS	o	NA
FVG318	o	NA
FVS318N	o	NA
FVS318Gv2	o	NA
FVS318N	o	NA
FVS336G	o	NA
GS105/E/PE	o	NA
GS108E/P/PE	o	NA
GS108T	o	NA
GS110TP	o	NA
GS116	o	NA
GS116E	o	NA
GS116Ev2	o	NA
GS510TP	o	NA
GS516TP	o	NA
GS716T	o	NA
GS724T	o	NA
GS728TP	o	NA
GS728TPP	o	NA
GS728TPSB	o	NA
GS728TSB	o	NA
GS748T	o	NA
JFS516	o	NA
JFS524	o	NA
JFS524E	o	NA
JGS516	o	NA
JGS516PE	o	NA
JGS524	o	NA
JGS524Ev2	o	NA
JGS524PE	o	NA
RN102xx	o	NA
RN104xx	o	NA
RNDU2xxx	o	NA
SRX5308	o	NA

Category 1		
Model	ProSUPPORT SKU (Term)	
	OnCall 24x7	Onsite NBD
	PMB0351 (5 Yrs.) PMB0331 (3 Yrs.) PMB0311 (1 Yr.)	PMPX1121 (2 Yrs.)
SRXN3205	o	NA
WAC120	o	NA
WN203	o	NA
WN370	o	NA
WNAP210	o	NA
WNAP320	o	NA
WND930	o	NA
WNDAP350	o	NA
WNDAP360	o	NA
WNDAP6xx	o	NA
XS708E	o	NA

Category 2		
Model	ProSUPPORT SKU (Term)	
	OnCall 24x7	Onsite NBD
	PMB0352 (5 Yrs.) PMB0332 (3 Yrs.) PMB0312 (1 Yr.)	PMPX1122 (2 Yrs.)
EDA500	o	NA
FSM5210P	o	o
FSM7226P	o	o
FSM7250P	o	o
GS724TP	o	NA
GS724TPS	o	NA
GS728TX	o	NA
GS728TXP	o	NA
GS748TPS	o	NA
GS748TS	o	NA
GS748TS3U	o	NA
GS752TP	o	NA
GS752TPS	o	NA
GS752TPSB	o	NA
GS752TX	o	NA
GS752TXP	o	NA
GS752TXS	o	NA
GS752TXSB	o	NA
GSM5212	o	o
GSM5212P	o	o
GSM7212F	o	o
GSM7212P	o	o
GSM7224P	o	o
GSM7224SK	o	o
GSM7224-200	o	o
GSM7226LP	o	o
GSM7248P	o	o
GSM7248SK	o	o
GSM7248-200	o	o
RN212xxx	o	NA
RN312xx	o	NA
RN314xx	o	NA
RN316xx	o	NA
WC7520	o	o
WMS5316	o	NA
XS712T	o	NA

¹ Austria, Belgium, Denmark, France, Germany, Ireland, Italy, Luxembourg, Spain, Sweden, Switzerland, The Netherlands & UK

Please refer to the ProSUPPORT Part Number for each ProSAFE or ReadyNAS product.

NETGEAR ProSUPPORT (continued)

Category 3		
Model	ProSUPPORT SKU (Term)	
	OnCall 24x7	Onsite NBD
	PMB0353 (5 Yrs.) PMB0333 (3 Yrs.) PMB0313 (1 Yr.)	PMPX1123 (2 Yrs.)
EDA2000	o	o
EDA4000	o	o
GSM7228PS	o	o
GSM7228S	o	o
GSM7252PS	o	o
GSM7252S	o	o
GSM7328FS	o	o
GSM7328S	o	o
RDD516	o	NA
RN516xx	o	NA
RN716x	o	NA
WC7600	o	o

Category 4		
Model	ProSUPPORT SKU (Term)	
	OnCall 24x7	Onsite NBD
	PMB0354 (5 Yrs.) PMB0334 (3 Yrs.) PMB0314 (1 Yr.)	PMPX1124 (2 Yrs.)
GSM7352S	o	o
RD52xxxx	o	o
RN322xxx	o	o
RN422xxx	o	o
RN12Pxxxx	o	o
RN12Sxxxx	o	o
RN12Txxxx	o	o
XSM7224	o	o
XSM7224S	o	o

NA Not Applicable
o Option for new purchase, extension or renewal

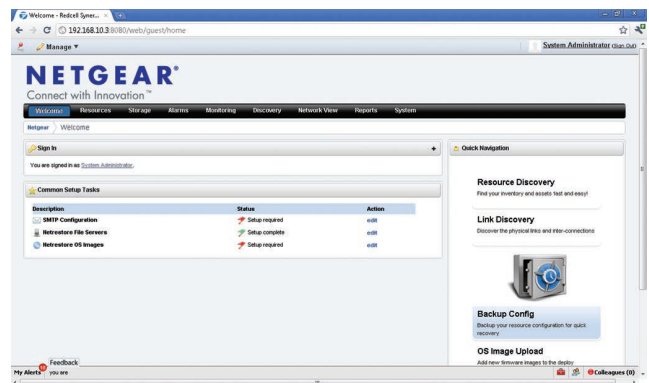
¹ Austria, Belgium, Denmark, France, Germany, Ireland, Italy, Luxembourg, Spain, Sweden, Switzerland, The Netherlands & UK

Please refer to the ProSUPPORT Part Number for each ProSAFE or ReadyNAS product.

ReadyNAS/ReadyDATA Replicate™

Your business already entrusts your most important data to the ReadyNAS/ReadyDATA. ReadyNAS/ReadyDATA Replicate simplifies the replication of that data to another ReadyNAS/ReadyDATA whether the two systems are on the same LAN or whether they're a world apart. Simply set up the replication job and run the initial replication locally. Then move the second ReadyNAS/ReadyDATA anywhere with Internet access, and the replication continues, with no additional setup. As you can see, ReadyNAS/ReadyDATA Replicate is just one of many smart ways that the ReadyNAS/ReadyDATA simplifies your business storage needs.

ProSAFE Software



Model	Network Management Software — NMS200
Product Description	ProSAFE Network Management Software
Features	Powerful, scalable and simple to use Single console for extensive visibility, granular control, and seamless automation Configuration and Firmware/OS management
NETGEAR- Compatible Devices	XCM8800 Series Chassis Switches, ProSAFE Managed Switches, ProSAFE Smart Switches, ProSAFE Wireless Controllers, ProSAFE Wireless Access Points, ReadyNAS Storage Devices
Warranty	90-Day Media warranty



Table of Contents

Midmarket Solutions	1
Network Solutions for Businesses	5
Commercial Products	
Switches	
ProSAFE® Unmanaged	10
ProSAFE Plus	13
ProSAFE Smart	15
ProSAFE Managed	20
NETGEAR® M6100 Series Chassis Switches	24
ProSAFE Modules & Accessories for Switches	25
Wireless	
ProSAFE Wireless Management Systems	27
ProSAFE Access Points	28
ProSAFE Antennas	30
Security	
VPN Client Software	31
ProSAFE VPN Firewalls	32
Storage	
ReadyNAS® Comparison Chart	36
ReadyDATA®	40
Backup and Recovery	
ReadyRECOVER®	41
Support, Warranties and Management	45



NETGEAR®

NETGEAR UK Ltd.

T +44 (0) 1344 458200

Technical support: 0844 875 4000

Reflex, Cain Road, Bracknell,
Berkshire RG121HL

uksales@netgear.com

join us at netgear.co.uk

Follow us on www.linkedin.com/company/netgear