

WAN Acceleration Appliance (WXA) Series

Significantly enhanced WAN application performance and user experience

In today's distributed enterprise, efficient utilization of bandwidth, increased security, and ease of deployment and management are important factors when considering a WAN acceleration solution. Throughput can be exhausted by collaboration applications such as Microsoft® SharePoint and Windows® File Sharing. At the same time, due to the popularity of Web 2.0 and social media, an exponential increase in Internet traffic is already overburdening WAN bandwidth. This inefficient utilization of available bandwidth results in higher latency, lowering employee productivity. Spending more on increased bandwidth or enhanced services, or purchasing disparate point solutions, does not resolve the problem.

The Dell™ SonicWALL™ WAN Acceleration Appliance (WXA) Series enables you to easily and securely enhance WAN application performance at remote and branch offices, thus improving the end user experience that leads to increased productivity. Unlike standalone WAN acceleration products that are deployed either behind the firewall or between the firewall and WAN router, the Dell SonicWALL WXA Series is an integrated add-on to the Dell SonicWALL Next-Generation Firewall. The solution enables comprehensive scanning for intrusions and malware before accelerating the traffic across the VPN or dedicated WAN link, thus maximizing security and performance. The WXA optimizes

performance and reduces latency by transmitting only new or changed data across the network after initial file transfer, resulting in dramatically reduced traffic volumes. In addition, the managing firewall enables you to identify and prioritize application traffic while the WXA minimizes traffic between sites.

The Dell SonicWALL solution streamlines the placement, deployment, configuration, routing, management and integration of the WXA with other components such as VPNs. Consolidating WAN acceleration with core Next-Generation Firewall technologies including intrusion prevention, anti-malware, and application intelligence, control and visualization at the gateway significantly increases security while lowering the total cost of ownership.

The powerful combination of a Dell SonicWALL Next-Generation Firewall and WXA enables you to more efficiently manage your bandwidth and simplify Next-Generation Firewall and WAN Acceleration deployment and management without compromising security. Dell SonicWALL makes it easy for you to add a WXA solution into your network by providing a variety of platform options including both hardware and virtual appliances as well as Live CD software.



- Simplified deployment, routing and integration
- Increased security
- Protocol optimization
- Byte caching and file caching
- Reduced TCO
- Data compression
- Windows File Sharing (WFS) acceleration
- HTTP (Web) caching
- Visualization
- WAN Acceleration client software

Features and benefits

Drastically simplify deployment, routing and integration of multiple WXA appliances across your network through complete provisioning and configuration by a Dell SonicWALL Next-Generation Firewall.

Add a layer of security by scanning all data for threats before sending it to the WAN acceleration appliance using Dell SonicWALL Reassembly-Free Deep Packet Inspection® technology.

Optimize network efficiency to give users LAN-like application performance over your WAN by decreasing latency and chattiness presented due to

inefficient protocols or application communication.

Extend the long-term value of your existing WAN links and enhance the user experience by dramatically reducing bandwidth consumption through byte and file caching.

Reduce total cost of ownership (TCO) by increasing efficiency and overall utilization of your existing WAN bandwidth, thus avoiding costly WAN upgrades.

Increase performance and reduce latency with data compression across the WAN.

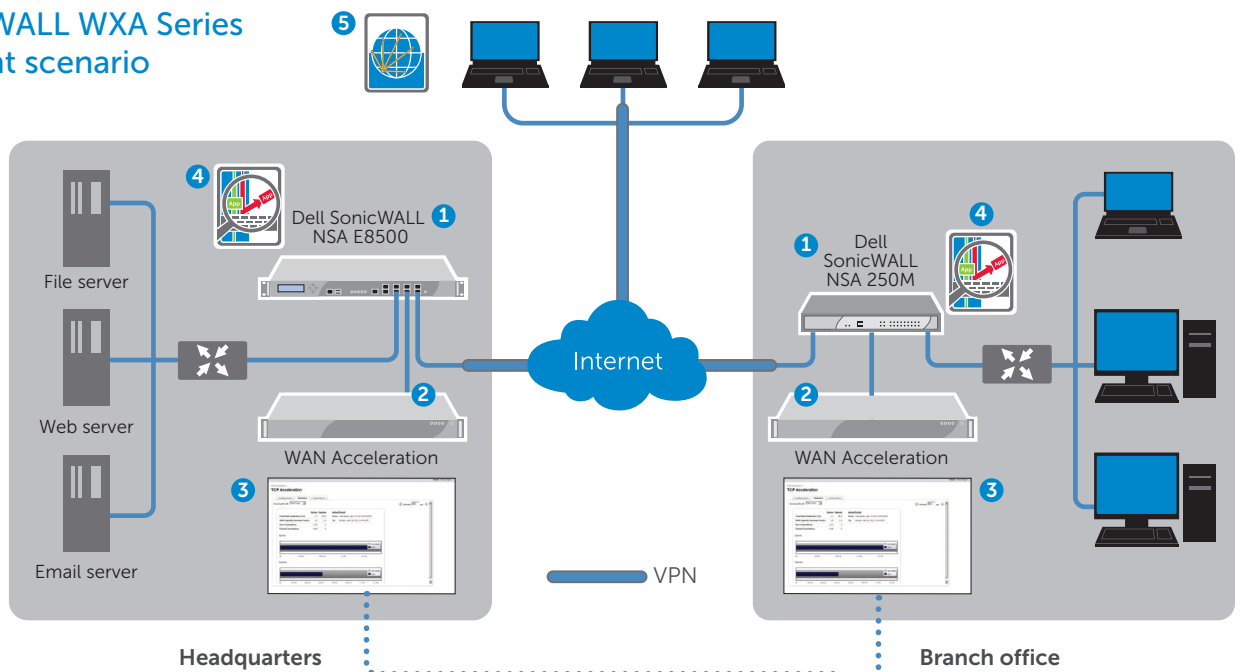
Improve response time while decreasing the amount of data transferred when downloading or accessing files from a shared drive, using **Windows File Sharing (WFS) acceleration**.

Increase browser response time while decreasing bandwidth using HTTP (Web) caching.

Get better insight into performance gains from WAN acceleration with real-time visualization.

WAN Acceleration client software allows traffic initiated from remote Windows PCs or laptops running NetExtender to be accelerated.

Dell SonicWALL WXA Series deployment scenario



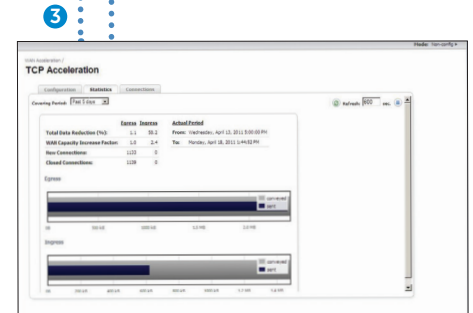
1 Dell SonicWALL Next-Generation Firewall appliances provide site-to-site VPN connectivity between a remote or branch office and the main corporate headquarters.

2 Dell SonicWALL WXA appliances improve WAN performance by decreasing latency, while reducing the amount of data traversing through the VPN.

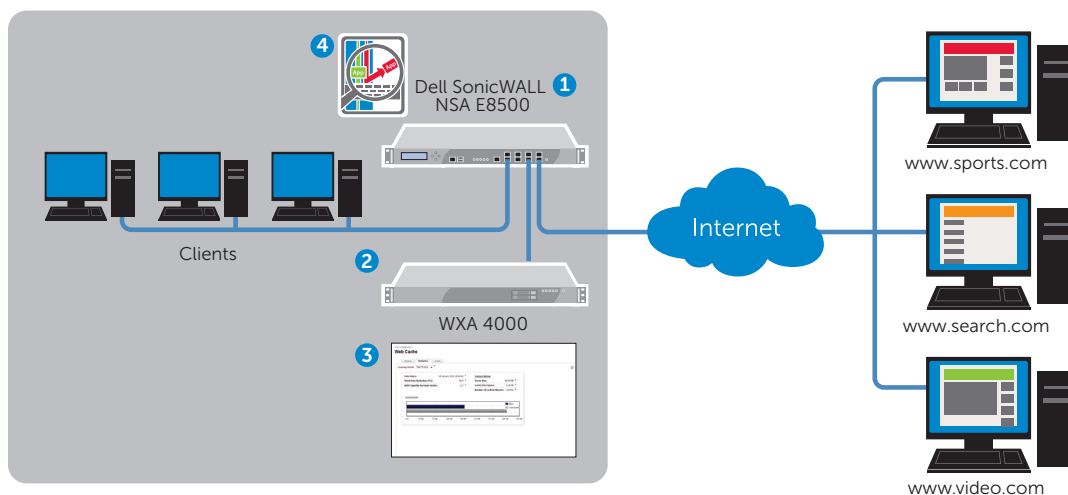
3 Visualization shows the performance gains and benefits of introducing WAN acceleration into the network.

4 Dell SonicWALL Application Intelligence and Control prioritizes and controls application traffic.

5 Dell SonicWALL NetExtender using WAN Acceleration client software.



HTTP (Web) caching deployment scenario



1 Dell SonicWALL Next-Generation Firewall appliances provides Deep Packet Inspection scanning for malware and intrusions.

2 Dell SonicWALL WXA appliance provides Web (HTTP) caching to decrease bandwidth utilization and improves browser response times.

3 Visualization shows the performance gains and benefits of introducing WAN acceleration into the network.

4 Dell SonicWALL Application Intelligence and Control prioritizes and controls application traffic.

Specifications

	WXA 500 Live CD	WXA 2000	WXA 4000	WXA 5000 Virtual Appliance
Platform	Software/CD	Hardware appliance	Hardware appliance	Virtual appliance (VMware)
Maximum users ¹	20	120	240	360
Maximum connections	100	600	1,200	1,800 ³
Maximum web caching connections	100	600	1,200	1,800 ³
Included/maximum concurrent WXA client licenses ⁴	2/20	2/50	2/125	2/125
Byte caching		Yes		
TCP/file compression		Yes		
Management		Requires SonicOS 5.8.1 or later		
CIFS/SMB acceleration	Yes ²		Yes	
Signed SMB support		Yes		
WFS/TCP visualization		Yes		
SNMP		Yes		
Syslog		Yes		
Operating system		Hardened Dell SonicWALL Linux OS		
Rack-mount chassis	—	1 RU		—
CPU	—	Intel 2.0GHz	Intel Dual Core 2.0GHz	—
RAM	—	2 GB	4 GB	—
Hard drive	—	250 GB	2x250 GB	—
Redundant Disk Array (RAID)	—	—	RAID 1	—
Dimensions	—	17.0 x 16.4 x 1.7 in/43.18 x 41.59 x 4.44 cm		
Weight	—	16 lbs/7.26 kg		—
WEED weight	—	16 lbs/7.37 kg		—
Power consumption (watts)	—	86	101	—
BTUs	—	293	344	—
MTBF (years)		14.27		

WXA 500 Live CD Only	
Dell hardware	Dell OptiPlex 3010, Dell Inspiron 660s, Dell Vostro 270s

WXA 5000 Virtual Appliance only	
Hypervisor	ESX and ESXi (version 4.0, 5.0 and newer)
Operating system installed	Hardened SonicLinux
Minimum CPU	2 x 1.6 GHz
Allocated memory	4 GB
Applied disk size	250 GB
VMware Hardware Compatibility Guide	http://vmware.com/resources/compatibility/search.php

¹ Maximum users may vary depending on the number of connections being generated per user.

² CIFS/SMB acceleration is available only when the Live CD image is installed on the provided hardware.

³ The max number of connections is dependent on the hardware specifications and may vary depending on the hardware configuration. The specifications provided are the minimum requirements to run the WXA Virtual Appliance.

⁴ NetExtender is required in order to use the WXA client software. Please refer to the WXA release notes for supported operating systems.



Dell SonicWALL WXA 500 Live CD with Software Subscription and Dynamic Support 24x7 (1-year)
01-SSC-9438



Dell SonicWALL WXA 2000 with Dynamic Support 24x7 (1-year)
01-SSC-9440



Dell SonicWALL WXA 4000 with Dynamic Support 24x7 (1-year)
01-SSC-9442



Dell SonicWALL WXA 5000 with Software Subscription and Dynamic Support 24x7 (1-year)
01-SSC-9444

Software and Support Renewals

Dell SonicWALL WXA 5000 Virtual Appliance Software Subscription and Dynamic Support 24x7 (1-year)*
01-SSC-9455

Dell SonicWALL Dynamic Support 24x7 for WXA 4000 (1-year)*
01-SSC-9452

Dell SonicWALL Dynamic Support 24x7 for WXA 2000 (1-year)*
01-SSC-9449

Dell SonicWALL WXA 500 Live CD Software Subscription and Dynamic Support 24x7 (1-year)*
01-SSC-9446

*Two and three-year options are also available.

For more information on Dell SonicWALL solutions, please visit www.sonicwall.com.

Security Monitoring Services from Dell SecureWorks are available for this appliance Series. For more information, visit www.dell.com/secureworks