



HP Designjet Z6800 Photo Production Printer

Fastest 60-in graphics production printer with unrivaled print quality¹



Designed for speed and productivity

- Print as fast as 1500 ft²/hr (140 m²/hr) in fast mode and 212 ft²/hr (20 m²/hr) in high-quality mode²
- Cut turnaround times and effortlessly handle large data loads thanks to high file-processing power
- Create quality prints at top speed with HP Double Swath Technology and the HP Optical Media Advance Sensor
- Confidently print unattended thanks to heavy media rolls, 775-ml HP ink cartridges, and a built-in take-up reel

Unrivaled color and black-and-white image quality

- Print exceptional colors—HP Vivid Photo Inks with a chromatic red offer a wide color gamut and uniform gloss
- Create unique black-and-white prints—three shades of black HP ink deliver rich density and smooth transitions
- Offer your customers durable prints that last up to 200 years, using HP Vivid Photo Inks³
- Produce posters, photos, canvas prints, backlit signs, POP displays, and maps with unrivaled image quality

¹ Compared with large-format inkjet printers under \$25,000 USD for graphic applications. Based on the fastest-rated color speeds as published by manufacturers as of October 2013. Test methods vary.

² Using plain paper and fast mode, the HP Designjet Z6800 Photo Production Printer can achieve speeds up to 1500 ft²/hr (140 m²/hr). Using glossy paper and normal mode, the Z6800 can achieve print speeds up to 212 ft²/hr (20 m²/hr).

³ Display permanence rating for interior displays/away from direct sunlight by HP Image Permanence Lab, and by Wilhelm Imaging Research, Inc. on a range of HP media. For more information, see globalBMG.com/hp.

Advanced color management backed by HP reliability

- Create custom ICC profiles and achieve color accuracy with the embedded spectrophotometer and color center⁴
- Achieve color accuracy—complete coverage of SWOP, ISO, GRACOL, 3DAP, EUROSCALE, TOYO, and FOGRA gamuts
- Choose how you want to print—send jobs right from your preferred design applications or through third-party RIPs
- Gain color reliability with HP Professional PANTONE[®] color emulation and embedded Adobe[®] PostScript[®]/PDF⁵

Eco Highlights

- Breakthrough color consistency can help reduce unnecessary reprints
- Free, convenient HP ink cartridge and printhead recycling¹
- FSC[®]-certified papers,² range of recyclable HP media with a take-back program¹
- ENERGY STAR[®] qualified and EPEAT Bronze registered³



¹ Program availability varies. Please check hp.com/recycle for details.

² BMG trademark license code FSC[®]-C115319, see fsc.org. HP trademark license code FSC[®]-C017543, see fsc.org. Not all FSC[®]-certified products are available in all regions.

³ EPEAT registered where applicable/supported. See epeat.net for registration status by country.

Please recycle large-format printing hardware and printing supplies.
Find out how at our website
hp.com/ecosolutions

⁴ Embedded in this HP Designjet Printer is an i1 spectrophotometer from X-Rite. Close collaboration between HP and X-Rite ensures a reliable solution that's been thoroughly tested to meet customer demands for ease, quality, and dependability.

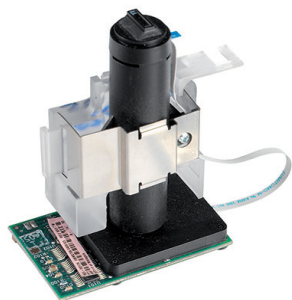
⁵ HP Professional PANTONE color emulation and embedded Adobe PostScript/PDF upgrade kit sold separately.



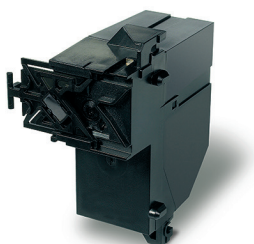
1. With Aurasma installed, please go to the HP Designjet channel at <http://auras.ma/s/ke25m>
2. Without Aurasma installed, please download it:
 - a. Google Play - <http://auras.ma/s/android>
 - b. Apple Store - <http://auras.ma/s/ios>Once done, go to the HP Designjet channel at <http://auras.ma/s/ke25m>
3. Open the application and point to the image to view the HP Designjet video

The HP Designjet printing system

Turn orders in record time with the fastest 60-inch production printer for graphics.⁶ Offer exceptional color and black-and-white prints on many substrates with 8 HP Vivid Photo Inks. Count on advanced color management features backed by HP reliability and easy operation.



HP Optical Media Advance Sensor (OMAS)



X-Rite i1 Spectrophotometer



HP Vivid Photo Inks

Outstanding speed

HP Double Swath Technology provides breakthrough speed and performance. The HP Designjet Z6800 Photo Production Printer series includes one set of four HP 771 Designjet Printheads, creating a wide print swath—up to 1.67-inches/42.5 mm—and a high firing frequency to deliver prints with amazing speed. Eight bi-color printheads feature 1,056 nozzles per color, 1,200 nozzles per inch, and small drop volumes for top photo quality.

The **HP Optical Media Advance Sensor (OMAS)** allows you to print at top speeds and still get great output results. This breakthrough technology improves paper-advance control and accuracy, so the printer can print at higher speeds across multiple environmental conditions without impairing image quality.

High productivity

Meet demanding requests and deliver high-impact prints. Fast speeds and high processing power help cut turnaround times. Achieve excellent image quality at production speeds. Confidently print unattended with large ink cartridges and a take-up reel.

Amazing color

Consistently achieve accurate colors using advanced HP technologies with complete coverage of FOGRA gamuts. Generate custom ICC profiles with the X-Rite i1 embedded spectrophotometer. Print from your favorite design applications or through RIPs.

The **HP Designjet Utility** lets you easily navigate through color-management, printing, and job-management workflows, and the HP Color Center provides easy-to-use, step-by-step instructions on how to add new media and calibrate the printer. Plus, the HP Designjet Z6800 printer's accounting tool allows you to easily track supplies use by job, while the job submitter tool lets you submit your HP-RTL, HP-GL/2, CALS G4, PostScript®, PDF, TIFF, EPS, and JPEG files directly to the printer.

Original HP Vivid Photo Inks

Three shades of black HP ink produce outstanding optical density and smooth transitions. Deliver durable prints that stand the test of time. HP 771 Printheads are designed to achieve precise, accurate placement of smaller drops at high speed. Each printhead prints two colors of ink with 1,056 nozzles per color.

Using **HP chromatic red ink**, your HP Designjet printing system provides the broad color gamut needed to produce vibrant color and deep, rich blacks and to achieve true photo-realistic image quality.

High, **uniform gloss** provides the professional finish. With a wide range of blacks and grays with smooth, subtle transitions, true gray neutrality, and rich black density, you can produce remarkable black-and-white prints. And these prints provide lasting results with exceptional print permanence indoors in-window and away from direct sun.⁷

⁶ Compared with large-format inkjet printers under \$25,000 USD for graphic applications. Based on the fastest-rated color speeds as published by manufacturers as of October 2013. Test methods vary.

⁷ Display permanence rating for interior displays/away from direct sunlight by HP Image Permanence Lab, and by Wilhelm Imaging Research, Inc. on a range of HP media. For more information, see globalBMG.com/hp.

Exceptional image quality that increases your offering



Retail POP/POS

Create appealing advertising posters, displays, window graphics and backlights, that can influence shoppers' decisions. High-quality printing on a wide variety of media (coated, photo, polypropylene, vinyl, etc.) can help you gain a competitive edge.



Exhibition and Event Graphics

Grab attention at exhibitions and events with eye-catching top-quality graphics. Print on a variety of applications, from roll-up banners and pop-up banners to top-quality signs and posters, with outstanding print quality.



Professional Photography and Digital Fine Art

Produce dazzling fine-art reproductions for galleries and artists with high-quality digital printing. Long lifespan and fade resistance keep prints in top viewing condition on a range of printing materials from canvas to high-end professional photo and fine-art papers.



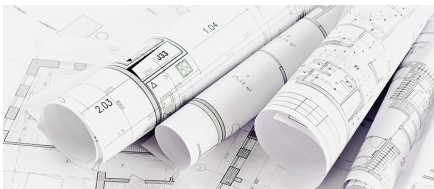
Maps and Orthophotos

Communicate clearly with excellent image and line quality on all your prints from drawings to satellite and aerial photos, maps, and more.



Renders, Posters and Presentations

Print large-format drawings, schematics, renders, and presentations with great ease, speed, clear and vibrant quality, and low running costs.



Line Drawings (color and black-and-white)

Print anything from simple CAD drawings to complex color documents with high speed and outstanding image quality. Bring your vision to life with drawings full of fine detail, enabled by precise line accuracy.

Trust HP Services

HP Designjet Support Services offer solutions for business critical environments—installation, extended support and maintenance, as well as variety of value-added services. For more information, please visit hp.com/go/designjet/support.

Original HP Vivid Photo Inks

Use HP Vivid Photo Inks and printheads to experience consistent high-quality and reliable performance that enable less downtime and increased productivity. These critical printing system components are designed and engineered together to provide optimized efficiency, a wide color gamut, and prints with over 200 years fade resistance.⁸

For more information, visit hp.com/go/OriginalHPInks.

For the entire HP Large Format Printing Materials portfolio, please see globalBMG.com/hp.

⁸ Display permanence rating for interior displays/away from direct sunlight, under glass by HP Image Permanence Lab and/or by Wilhelm Imaging Research, Inc. on a range of HP media. See globalBMG.com/hp.

Technical specifications

Print	Maximum print speed ⁹	140 m ² /hr (1500 ft ² /hr) on plain media
	Color images ¹⁰	Best: 3.2 min/page on A1/D or up to 13.1 m ² /hr (141 ft ² /hr) on glossy media Normal: 2.1 min/page on A1/D or up to 19.7 m ² /hr (212 ft ² /hr) on glossy media
	Print resolution	Up to 2400 x 1200 optimized dpi
	Margins	5 x 5 x 5 mm (0.2 x 0.2 x 0.2 in)
	Ink types	Pigment-based
	Technology	HP Thermal Inkjet
	Ink cartridges	Chromatic red, magenta, yellow, light cyan, light gray, light magenta, matte black, photo black
	Line accuracy	+/- 0.1% ¹¹
	Minimum line width	0.02 mm (0.0008 in) (HP-GL/2 addressable)
	Guaranteed minimum line width	0.067 mm (0.0026 in) (ISO/IEC 13660:2001(E)) ¹²
Image quality	Color accuracy	Median < 1.19 dE2000, 95% of colors < 2.77 dE2000 ¹³
	Short term color stability	< 1 dE2000 in less than 5 minutes ¹⁴
	Long term print-to-print repeatability	Average < 0.5 dE2000, max < 1 dE2000 ¹⁴
	Maximum optical density	4.5 L* min/2.31 D ¹⁵
Media	Handling	Roll feed, automatic cutter, take-up reel
	Media types	Bond and coated paper, technical paper, film, photographic paper, proofing paper, backlit, self-adhesive, banner and sign, fabric, fine art printing material
	Size	279 to 1524-mm (11 to 60-in) rolls
	Thickness	Up to 0.56 mm (22 mil)
Applications	Posters, Banners, Mockups, Photos, Digital fine art, Proofs, Displays, POP/POS, Light boxes – film, Exhibition, Event graphics	
Memory	64 GB (virtual) ¹⁶ , 320 GB hard disk	
Connectivity	Interfaces (standard)	Gigabit Ethernet (1000Base-T), EIO Jetdirect accessory slot
	Print languages (standard)	HP-GL/2, HP-RTL, CALS G4
	Print languages (optional)	Adobe PostScript 3, Adobe PDF 1.7, TIFF, JPEG
	Printing paths	Printer driver, HP Embedded Web Server
	Drivers (included)	HP-GL/2, HP-RTL drivers for Windows; PostScript Windows and Mac drivers with optional PostScript/PDF Upgrade Kit
Dimensions (w x d x h)	Printer	2430 x 690 x 1370 mm (95.7 x 27.2 x 53.9 in)
	Shipping	2700 x 750 x 1200 mm (106.3 x 29.5 x 47.2 in)
Weight	Printer	190 kg (419 lb)
	Shipping	252 kg (555.6 lb)
What's in the box	HP Designjet Z6800 Photo Production Printer, spindle, printheads, introductory ink cartridges, maintenance cartridge, printer stand, take-up reel, 3-in spindle adapter kit, quick reference guide, setup poster, startup software, power cord	
Environmental ranges	Operating temp.	-20 to 55°C (-4 to 131°F)
	Storage temp.	-20 to 55°C (-4 to 131°F)
	Operating humidity	20 to 80% RH
Acoustic	Sound pressure	53 dB(A) (printing); 39 dB(A) (ready); 39 dB(A) (sleep)
	Sound power	7.0 B(A) (printing); 5.5 B(A) (ready); 5.5 B(A) (sleep)
Power	Consumption	270 watts (printing); < 48 watts (ready); < 5.3 watts (sleep); < 0.3 watts (off)
	Requirements	Input voltage (auto ranging): 100 to 127 VAC (+/- 10%), 5 A; 220 to 240 VAC (+/- 10%), 3 A; 50/60 Hz (+/- 3 Hz)
Certification	Safety	USA and Canada (CSA certified), EU (LVD and EN 60950-1 compliant), Russia (GOST), Singapore (PSB), China (CCC), Argentina (IRAM), Mexico (NYCE), Korea (KC)
	Electromagnetic	Compliant with Class A requirements, including: USA (FCC rules), Canada (ICES), EU (EMC Directive), Australia (ACMA), New Zealand (RSM), China (CCC), Japan (VCCI), Korea (MSIP)
	Environmental	ENERGY STAR, WEEE, RoHS (EU, China, Korea, India), REACH, EPEAT Bronze
Warranty	One-year limited hardware warranty	

Ordering information

Product	F2572A	HP Designjet Z6800 60-in Photo Production Printer	
Accessories	CQ654C	HP Designjet HD Scanner	
	CQ745B	HP Designjet PostScript/PDF Upgrade Kit	
	CQ754A	HP Designjet 60-in Spindle	
	J8025A	HP Jetdirect 640n Print Server	
	Q6714A	HP Designjet 60-in Media Bin	
	Q6715A	HP Designjet User Maintenance Kit	
Original HP printheads	CE017A	HP 771 Matte Black and Chromatic Red Designjet Printhead	
	CE018A	HP 771 Magenta and Yellow Designjet Printhead	
	CE019A	HP 771 Light Magenta and Light Cyan Designjet Printhead	
	CE020A	HP 771 Photo Black and Light Gray Designjet Printhead	
	C1Q37A	HP 773C 775-ml Matte Black Designjet Ink Cartridge	
	C1Q38A	HP 773C 775-ml Chromatic Red Designjet Ink Cartridge	
Original HP ink cartridges and maintenance supplies	C1Q39A	HP 773C 775-ml Magenta Designjet Ink Cartridge	
	C1Q40A	HP 773C 775-ml Yellow Designjet Ink Cartridge	
	C1Q41A	HP 773C 775-ml Light Magenta Designjet Ink Cartridge	
	C1Q42A	HP 773C 775-ml Cyan Designjet Ink Cartridge	
	C1Q43A	HP 773C 775-ml Photo Black Designjet Ink Cartridge	
	C1Q44A	HP 773C 775-ml Light Gray Designjet Ink Cartridge	
	CH644A	HP 771 Designjet Maintenance Cartridge	
	Original HP large format printing materials	Q8000A	HP Premium Instant-dry Satin Photo Paper (FSC® certified) ¹⁷ 1524 mm x 30.5 m (60 in x 100 ft)
		Q6578A	HP Universal Instant-dry Gloss Photo Paper (FSC® certified) ¹⁷ 1524 mm x 30.5 m (60 in x 100 ft)
		Q8707A	HP Artist Matte Canvas 1524 mm x 15.2 m (60 in x 50 ft)
Q8750A		HP Premium Vivid Color Backlit Film ¹⁸ 1524 mm x 30.5 m (60 in x 100 ft)	

Service and support

H4518E	HP Installation Service with Network Setup
U1Z58E	HP 2 years Next Business Day Onsite Support with DMR *
U1Z59E	HP 3 years Next Business Day Onsite Support with DMR *
U1ZT0E	HP 5 years Next Business Day Onsite Support with DMR *
U1ZT2PE	HP 1 years Post Warranty, Next Business Day Onsite Support with DMR *
U1ZT1PE	HP 2 years Post Warranty, Next Business Day Onsite Support with DMR *
U1XV4E	HP Preventive Maintenance Service

* Defective Media Retention keeps your sensitive data safe. To comply with security regulations you can keep the defective hard-drive or data-retentive memory component while getting a new replacement disk or memory.

HP Designjet Support Services offer solutions for business critical environments—installation, extended support and maintenance, as well as variety of value-added services. For more information, please visit hp.com/go/designjet/support.

Use HP Vivid Photo Inks and printheads to experience consistent high-quality and reliable performance that enable less downtime and increased productivity. These critical printing system components are designed and engineered together to provide optimized efficiency, a wide color gamut, and prints with over 200 years fade resistance.²⁰ For more information, visit hp.com/go/OriginalHPInks.

For the entire HP Large Format Printing Materials portfolio, please see globalBMG.com/hp.

⁹ Mechanical printing time. Printed in Fast mode with HP Vivid Photo Inks.

¹⁰ Mechanical printing time. Printed with HP Vivid Photo Inks.

¹¹ +/- 0.1% of the specified vector length or +/- 0.2 mm (whichever greater) at 23°C (73°F), 50-60% relative humidity, on A0/E HP Matte Film in Best or Normal mode with HP Vivid Photo Inks.

¹² Measured on HP Matte Film.

¹³ ICC absolute colorimetric accuracy with HP Vivid Photo Inks.

¹⁴ With HP Premium Instant-dry Satin Photo Paper with HP Vivid Photo Inks, right after calibration.

¹⁵ With HP Premium Instant-dry Gloss Photo Paper with HP Vivid Photo Inks.

¹⁶ Based on 1 GB RAM. Expandable to 1.5 GB RAM through a Designjet qualified SODIMM included only in the optional HP Designjet PostScript®/PDF Upgrade Kit accessory.

¹⁷ BMG trademark license code FSC®-C115319, see fsc.org. HP trademark license code FSC®-C017543, see fsc.org. Not all FSC®-certified products are available in all regions.

¹⁸ In Europe, recyclable in consumer collection systems that accept liquid packaging.

¹⁹ HP Large Format Media take-back program availability varies. Recycling programs may not exist in your area. See hp.com/recycle for details.

²⁰ Display permanence rating for interior displays/away from direct sunlight, under glass by HP Image Permanence Lab and/or by Wilhelm Imaging Research, Inc. on a range of HP media with Original HP inks. See globalBMG.com/hp.



For more information, please visit hp.com/go/DesignjetZ6800

© Copyright 2014 Hewlett-Packard Development Company, L.P. The information contained herein is subject to change without notice. The only warranties for HP products and services are set forth in the express warranty statements accompanying such products and services. Nothing herein should be construed as constituting an additional warranty. HP shall not be liable for technical or editorial errors or omissions contained herein.

Adobe, PostScript, and Adobe PostScript 3 are trademarks of Adobe Systems Incorporated. ENERGY STAR and the ENERGY STAR mark are registered U.S. marks. Windows is a U.S. registered trademark of Microsoft Corporation. Mac and the Mac logo are trademarks of Apple Computer, Inc., registered in the U.S. and other countries.

4AAS-1278EEW, April 2014

This is an HP Indigo digital print.

