

Coffee & Tea

Commercial Refrigerators
and Freezers

Quality, Design and Innovation



LIEBHERR



Performance and Efficiency for years to come

Liebherr is one of the world's leading manufacturers of premium commercial refrigeration. We specialize in performance and efficiency, as well as keeping food fresh longer.

High quality materials, perfectly detailed finishes, and elite cooling components are combined with the latest production processes, resulting in an outstanding cooling product.

Commercial refrigeration is made easier with Liebherr products, many of which are engineered to accommodate a variety of flexible design and installation options.

Liebherr commercial appliances use natural refrigerants which are environmentally safe and responsible, while providing greater energy efficiency.

Global Success: The Liebherr Group

Liebherr is a third-generation, family-owned company founded by Hans Liebherr in 1949 with the creation of the first ever tower crane.

With 70 years of success, Liebherr has become synonymous with the equipment needed to build homes and businesses, as well as the appliances within them. One of the world's largest manufacturers of construction machinery, Liebherr has expanded to eleven divisions with a wide array of product ranges, including earth moving, mining, mobile cranes, tower cranes, concrete technology, maritime cranes, aerospace and transportation systems, gear technology and automation systems, components, hotels and domestic appliances.

The company currently employs over 48,000 people in more than 140 companies in over 50 countries worldwide. Liebherr Appliances is Europe's largest privately owned manufacturer of fridges and freezers for residential and commercial use, with an annual production of more than 2.1 million units.

Liebherr's first steps into the Americas was in the early 1970's, later expanding Liebherr Appliances into North America in 2004. Liebherr Appliances in North America is located in Miami, Florida in the United States.



Earthmoving



Mining



Mobile Cranes



Tower Cranes



Concrete Technology



Maritime Cranes



Aerospace and Transportation Systems



Gear Technology and Automation Systems



Domestic Appliances



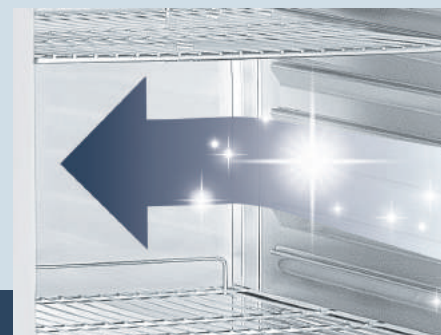
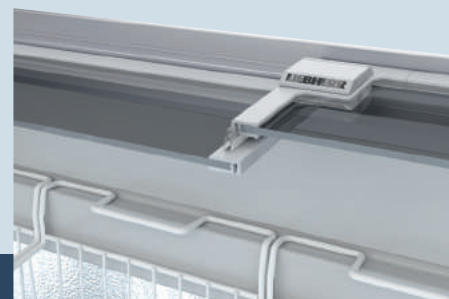
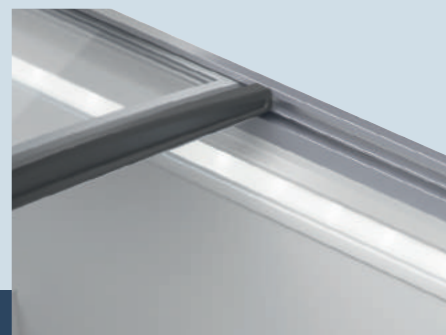
Components



Hotels



Reasons to Choose Liebherr



Highest performance

Liebherr freezers, for the frozen food and ice cream industries, provide full refrigerating capacity, even in extreme climate conditions. The use of ultra-modern components, efficient and environmentally-friendly refrigerants, as well as precise controls ensure that product quality and freshness is preserved and that the appliances are always efficient.

Efficiency

Liebherr freezers operate extremely economically: highly-efficient compressors, a precision electronic control system, as well as highly effective insulation ensure low power consumption and low operating costs. The high quality of the virtually maintenance-free and service-friendly appliances guarantees a long life and reliable operation.

Robust quality

Liebherr appliances are specially constructed for intensive professional use and feature a very sturdy design—with the highest-quality materials and perfect workmanship right down to the smallest detail. The quality of the appliances is ensured by elaborate testing. All electronic and refrigeration components are well-balanced to ensure maximum functionality and efficiency and an attractive design.

Easy cleaning

Hygiene plays an especially important role in the commercial sector. That is why Liebherr upright freezers are equipped with molded inner liners with large radii that are easy to clean. Height-adjustable wire shelves enable individual adaptation to different packaging types or products.

Product presentation

Attractive product presentation is the best sales support at the point of sale. Liebherr freezers ensure products are always stored optimally, are within easy reach and stimulate buying. Large, smooth-running sliding glass lids, as well as effective interior lighting enable perfect product display. Excellent product visibility is ensured by the high load-line height. Sturdy baskets and adjustable shelves allow perfect adaptation of the storage space to the products stored.

Easy servicing

Liebherr freezers are designed for easy servicing: the generously radiused corners on the molded inner liners, as well as the easily removable shelves save time and enable perfect hygiene. In addition, Liebherr appliances are virtually maintenance-free and very easy to use thanks to their sophisticated design. All components requiring regular servicing are designed for easy access.



Coffee & Tea

High-quality freezers to meet the demands of the frozen food and ice cream industries.

Continuous operation in professional applications puts special demands on freezers for the frozen food and ice cream industry. That is why Liebherr takes great care in the development of these appliances to meet your customer requirements with high-quality and innovative ideas. High-insulating materials, in conjunction with highly efficient compressors, efficient refrigerants and well-balanced refrigeration components, as well as precision electronic control systems, ensure outstanding refrigeration capacity — even in extreme conditions. In addition, the appliances are easy to clean and very economical in consumption. Company and product branding can be used to stimulate impulse buying. Liebherr offers a wide range of models for almost any application featuring premium quality and design. You can rely on Liebherr professional appliances — 24 hours a day, 365 days a year.

Increase awareness of your brand

Liebherr offers many unique and impressive branding options for freezers. You can choose between various methods and different models. Upon request, we can develop customized appliance concepts to meet your specific brand requirements.



Customized vinyls

Depending on the quantity and design, the desired brand is applied on a suitable vinyl sticker, usually PC film, in a screen printing or digital printing process. Vinyl stickers can be applied by Liebherr in the factory.

LED logo

A unique design can be engraved and illuminated with LEDs between the two panes of the glass door. The effect is impressive and shows off the design brilliantly.



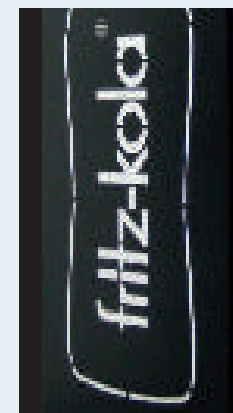
Customized color design

Customized color design enables an eye-catching presentation of your brand and an extremely attractive product display. Different materials and effects can be used to individually design the side walls, the door frames, the handle, the base compartment, the display frame and the inner liner according to your specifications.



3D branding

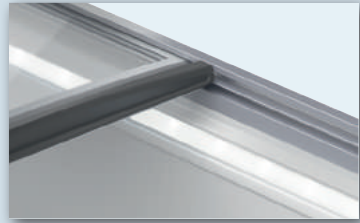
3D branding gives an appliance added appeal and opens up completely new possibilities for using images creatively. A special method enables the production of high-quality decals using 3D printing (lenticular method). In addition, we work with different printing levels and layers when glazing to produce a 3D effect that appears when backlit. This way, you can ensure every appliance stands out and encourages impulse buying.



3D effect



The advantages at a glance



The **energy-efficient LED interior light** creates a powerful visual impact by highlighting the products on display. The option for a lid lock is available.



The toughened, **single-pane safety glass** is shatter-proof, resilient and stabilizes the upper area of the chest. Good product visibility is ensured by reduced heat radiation. The lid can be removed for easy handling and cleaning.

Combines a **plastic and aluminum frame for dimensional stability** and rounded corners for hygiene purposes and user protection in an attractive, modern design.



High-performance insulation reduces energy consumption and ensures that temperatures remain even.



Sturdy swivel castors make it easier to move the appliance and allow for convenient cleaning underneath the appliance.



Sturdy suspended baskets provide a clear view of the goods presented.

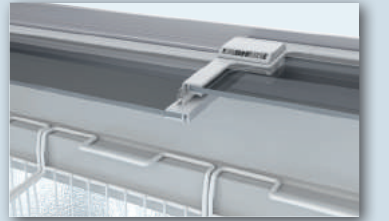


Profiled seals allow easy lid opening and closing.



Analog internal temperature display at load-line level with an adjustable range between +14°F and -11°F (-10°C and -24°C) to suit individual needs.

The **lid lock** prevents unauthorized access.



The **steel inner liner** with rounded corners is easy to clean, rust-proof, scratch-resistant, enables perfect hygiene and features good thermal conductivity.



Quality right down to the smallest detail

Liebherr chest freezers are specially designed to meet extreme requirements and withstand high-stress professional

applications. Sturdy materials, high-quality refrigeration components and quality workmanship guarantee longevity. High-impact product presentation in the chest freezers is ensured by sturdy baskets and sliding glass lids which provide a clear view. Within our wide range of sales chest freezers, you'll find the right appliance with the right features to meet any and every need.



Smooth-running sliding glass lid

The curved sliding glass lids on the EFI chests are made of toughened, single-pane safety glass. The lid halves are easy to move thanks to profiled seals and the plastic frame heated by hot gas from the compressor.



Maximized total display area

The slim yet highly durable plastic and aluminum frame provides the greatest possible surface area for displaying merchandise. This means that customers have the best possible view of the freezer's contents and product presentation is optimized.



Stability and design

Combining plastic parts at the side with connecting aluminum profiles give the cover frame of the EFI and EFE models an attractive appearance. The steel inner liner with rounded corners is easy to clean, rust-proof and scratch-resistant. Thanks to the steel material, it possesses outstanding thermal conductivity.



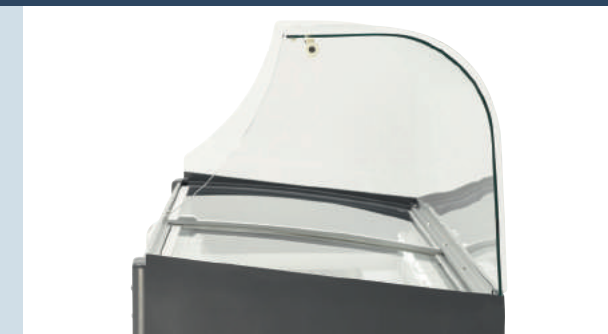
Sturdy swivel castors

Swivel castors make transport easier, especially when the chest appliances have to be moved frequently. All EFE and EFI models are equipped with high-quality non-marking polyurethane 2" (50mm) swivel castors.



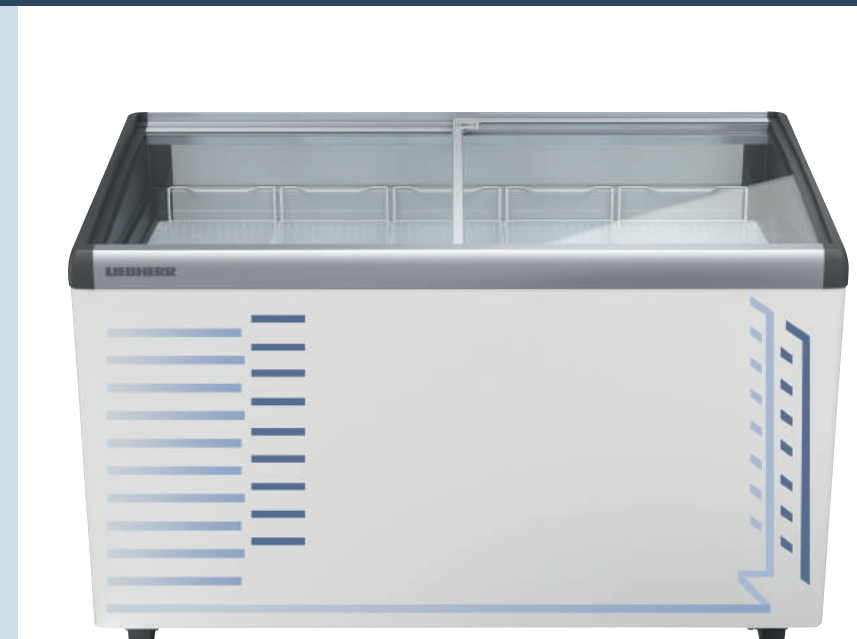
High-impact product presentation

EFI and EFE chest freezers are fitted with a LED interior light that can be switched on separately. The glare-free light is horizontally integrated into the front of the inner liner. Sturdy baskets are available in different sizes for impulse and bulk ice cream. They can be flexibly arranged to ensure optimum use of the interior. Practical partitions for this purpose are available as an accessory.



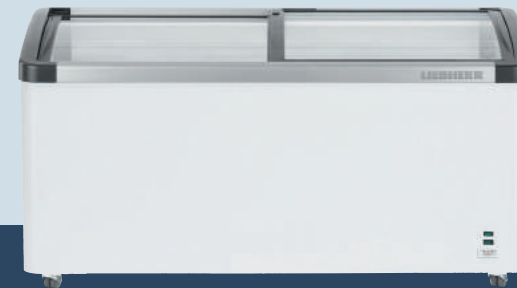
Glass canopy

The robust glass fixture made from toughened safety glass protects ice cream from contamination and helps to ensure goods are presented in an attractive manner. The extra deep front of the glass fixture ensures excellent visibility of products and means that customers always have a clear view of the goods presented from a range of different angles. The LED interior lights in appliances EFI 3553 and EFI 4853 also contribute to this. Cone holders, napkins and any other typical ice cream accessories can be conveniently placed on the flat shelf area. (Only accessories)



Quieter thanks to outer skin condenser

Thanks to the foamed-in outer skin condenser, the ice cream chest freezers are virtually maintenance-free and the housing is easy to clean. In addition, condensation does not form on the outside.



Impulse sales chest freezers

EFI 5653 LED

Total gross/net capacity cu.ft. (l)	20.2 / 14.4 (571 / 408)
Exterior dimensions in inches (w/d/h) in mm (w/d/h)	74 1/4" / 26 13/16" / 32 1/2" 1885 / 680 / 825
Interior dimensions in inches (w/d/h) in mm (w/d/h)	69 5/16" / 21 1/8" / 19 5/16" 1760 / 535 / 490
Total display area in m² (TDA) / ft²	1.03 / 11.09
Energy consumption in 365 days *	1209 kWh
Ambient temperature in °F (°C)	50°F to 95°F (10°C to 35°C)
Refrigerant	R290
Sound rating **	52 dB(A)
Connection rating	5.5A/320W
Frequency / Voltage	60 Hz/115-127V~
Cooling system/Defrost	static/manual
Temperature range °F (°C)	14°F to -11°F (-10°C to -24°C)
Lid material	sliding glass lid
External cabinet finish	steel/white
Internal liner material	steel
Frame color	grey
Type of control/Temperature display	analog control/internal analogue
Interior light	LED
Number of baskets	8
Number of baskets, max (see picture)	8
Castors/Lock	swivel casters/recessed
Insulation in inches (mm)	2 3/8" (60)
Water drain	yes
Gross/net weight in lbs (kg)	200.4 / 177.9 (90.9 / 80.7)
Accessories	
Basket 270 mm	7111091
Basket 210 mm	7111093
Partition grid 270 mm/ High grid	7111031
Partition grid 210 mm / High grid	7111784
Partition grid 270 mm/Low grid	7111033
Partition grid 210 mm/Low grid	7111787
Rubber bumpers, gray	7266707
Cylinder lock for glass sliding lid	7043660
Glass canopy	
Scoop ice cream containers	on request
Baskets for scoop ice cream containers	on request
External thermostat dial	on request

EFI 4853 LED

Total gross/net capacity cu.ft. (l)	17.2 / 12.6 (488 / 356)
Exterior dimensions in inches (w/d/h) in mm (w/d/h)	66" / 26 13/16" / 32 1/2" 1675 / 680 / 825
Interior dimensions in inches (w/d/h) in mm (w/d/h)	61 1/16" / 21 1/8" / 19 5/16" 1550 / 535 / 490
Total display area in m² (TDA) / ft²	0.91 / 9.79
Energy consumption in 365 days *	1177 kWh
Ambient temperature in °F (°C)	50°F to 86°F (10°C to 30°C)
Refrigerant	R290
Sound rating **	52 dB(A)
Connection rating	5.5 A/292 W
Frequency / Voltage	60 Hz/115 – 127V~
Cooling system/Defrost	static/manual
Temperature range °F (°C)	14°F to -11°F (-10°C to -24°C)
Lid material	sliding glass lid
External cabinet finish	steel/white
Internal liner material	steel
Frame color	grey
Type of control/Temperature display	analog control/internal analogue
Interior light	LED
Number of baskets	7
Number of baskets, max (see picture)	7
Castors/Lock	swivel casters/can be retrofitted
Insulation in inches (mm)	2 3/8" (60)
Water drain	yes
Gross/net weight in lbs (kg)	197.3 / 176.4 (89.5 / 80)
Accessories	
Basket 270 mm	7111091
Basket 210 mm	7111093
Partition grid 270 mm/ High grid	7111031
Partition grid 210 mm / High grid	7111784
Partition grid 270 mm/Low grid	7111033
Partition grid 210 mm/Low grid	7111787
Rubber bumpers, gray	7266707
Cylinder lock for glass sliding lid	7043660
Glass canopy	9809162
Scoop ice cream containers	on request
Baskets for scoop ice cream containers	on request
External thermostat dial	on request

EFI 4453 LED

Total gross/net capacity cu.ft. (l)	15.0 / 10.7 (426 / 302)
Exterior dimensions in inches (w/d/h) in mm (w/d/h)	57 11/16" / 26 13/16" / 32 1/2" 1465 / 680 / 825
Interior dimensions in inches (w/d/h) in mm (w/d/h)	52 13/16" / 21 1/8" / 19 5/16" 1340 / 535 / 490
Total display area in m² (TDA) / ft²	0.79 / 8.50
Energy consumption in 365 days *	774 kWh
Ambient temperature in °F (°C)	50°F to 86°F (10°C to 30°C)
Refrigerant	R290
Sound rating **	52 dB(A)
Connection rating	2.5 A/245 W
Frequency / Voltage	60 Hz/115 - 127V~
Cooling system/Defrost	static/manual
Temperature range °F (°C)	14°F to -11°F (-10°C to -24°C)
Lid material	sliding glass lid
External cabinet finish	steel/white
Internal liner material	steel
Frame color	grey
Type of control/Temperature display	analog control/internal analogue
Interior light	LED
Number of baskets	6
Number of baskets, max (see picture)	6
Castors/Lock	swivel casters/can be retrofitted
Insulation in inches (mm)	2 3/8" (60)
Water drain	yes
Gross/net weight in lbs (kg)	168.9 / 149.3 (76.6 / 67.7)
Accessories	
Basket 270 mm	7111091
Basket 210 mm	7111093
Partition grid 270 mm/ High grid	7111031
Partition grid 210 mm / High grid	7111784
Partition grid 270 mm/Low grid	7111033
Partition grid 210 mm/Low grid	7111787
Rubber bumpers, gray	7266707
Cylinder lock for glass sliding lid	7043660
Glass canopy	
Scoop ice cream containers	on request
Baskets for scoop ice cream containers	on request
External thermostat dial	on request



Impulse sales chest freezers	EFI 3553 LED	EFI 2853 LED	EFI 2153 LED	EFI 1453 LED
Total gross/net capacity cu.ft. (l)	12.3 / 8.8 (347 / 250)	9.7 / 7.0 (276 / 197)	7.3 / 5.1 (206 / 145)	4.8 / 3.2 (135 / 91)
Exterior dimensions in inches (w/d/h) in mm (w/d/h)	49 7/16" / 26 13/16" / 32 1/2" 1255 / 680 / 825	41 3/16" / 26 13/16" / 32 1/2" 1045 / 680 / 825	32 7/8" / 26 13/16" / 32 1/2" 835 / 680 / 825	24 5/8" / 26 13/16" / 32 1/2" 625 / 680 / 825
Interior dimensions in inches (w/d/h) in mm (w/d/h)	44 1/2" / 21 1/8" / 19 5/16" 1130 / 535 / 490	36 1/4" / 21 1/8" / 19 5/16" 920 / 535 / 490	28" / 21 1/8" / 19 5/16" 710 / 535 / 490	19 11/16" / 21 1/8" / 19 5/16" 500 / 535 / 490
Total display area in m² (TDA) / ft²	0.67 / 7.21	0.54 / 5.81	0.42 / 4.52	0.30 / 3.23
Energy consumption in 365 days *	668 kWh	593 kWh	516 kWh	404 kWh
Ambient temperature in °F (°C)	50°F to 86°F (10°C to 30°C)	50°F to 86°F (10°C to 30°C)	50°F to 86°F (10°C to 30°C)	50°F to 95°F (10°C to 35°C)
Refrigerant	R290	R290	R290	R290
Sound rating **	52 dB(A)	42 dB(A)	42 dB(A)	42 dB(A)
Connection rating	2.5 A/233 W	2.5 A/219 W	2.5 A/208 W	2.5 A/192 W
Frequency / Voltage	60 Hz/115 – 127V~	60 Hz/115 – 127V~	60 Hz/115 – 127V~	60 Hz/115 – 127V~
Cooling system/Defrost	static/manual	static/manual	static/manual	static/manual
Temperature range °F (°C)	14°F to -11°F (-10°C to -24°C)	14°F to -11°F (-10°C to -24°C)	14°F to -11°F (-10°C to -24°C)	14°F to -11°F (-10°C to -24°C)
Lid material	sliding glass lid	sliding glass lid	sliding glass lid	sliding glass lid
External cabinet finish	steel/white	steel/white	steel/white	steel/white
Internal liner material	steel	steel	steel	steel
Frame color	grey	grey	grey	grey
Type of control/Temperature display	analog control/internal analogue	analog control/internal analogue	analog control/internal analogue	analog control/internal analogue
Interior light	LED	LED	LED	LED
Number of baskets	5	4	3	2
Number of baskets, max (see picture)	5	4	3	2
Castors/Lock	swivel casters/recessed	swivel casters/can be retrofitted	swivel casters/can be retrofitted	swivel casters/recessed
Insulation in inches (mm)	2 3/8" (60)	2 3/8" (60)	2 3/8" (60)	2 3/8" (60)
Water drain	yes	yes	yes	yes
Gross/net weight in lbs (kg)	151.2 / 133.2 (68.6 / 60.4)	135.1 / 118.6 (61.3 / 53.8)	119.5 / 104.7 (54.2 / 47.5)	104.5 / 91.7 (47.4 / 41.6)
Accessories				
Basket 270 mm	7111091	7111091	7111091	7111091
Basket 210 mm	7111093	7111093	7111093	7111093
Partition grid 270 mm / High grid	7111031	7111031	7111031	7111031
Partition grid 210 mm / High grid	7111784	7111784	7111784	7111784
Partition grid 270 mm / Low grid	7111033	7111033	7111033	7111033
Partition grid 210 mm / Low grid	7111787	7111787	7111787	7111787
Rubber bumpers, gray	7266707	7266707	7266707	7266707
Cylinder lock for glass sliding lid	7043660	7043660	7043660	7043660
Glass canopy	9809160			
Scoop ice cream containers	on request	on request	on request	on request
Baskets for scoop ice cream containers	on request	on request	on request	on request
External thermostat dial	on request	on request	on request	on request



Sales chest freezers	EFE 6052 LED	EFE 5152 LED	EFE 4652 LED	EFE 3852 LED
Total gross/net capacity cu.ft. (l)	20.9 / 16.1 (593 / 457)	18.3 / 14.1 (519 / 398)	15.7 / 12.0 (444 / 340)	13.0 / 9.9 (369 / 280)
Exterior dimensions in inches (w/d/h) in mm (w/d/h)	74 1/4" / 26 13/16" / 32 1/2" 1885 / 680 / 825	66" / 26 13/16" / 32 1/2" 1675 / 680 / 825	57 11/16" / 26 13/16" / 32 1/2" 1465 / 680 / 825	49 7/16" / 26 13/16" / 32 1/2" 1255 / 680 / 825
Interior dimensions in inches (w/d/h) in mm (w/d/h)	69 5/16" / 21 1/8" / 20 5/8" 1760 / 535 / 523	61 1/4" / 21 1/8" / 20 5/8" 1555 / 535 / 523	52 13/16" / 21 1/8" / 20 5/8" 1340 / 535 / 523	44 1/2" / 21 1/8" / 20 5/8" 1130 / 535 / 523
Total display area in m² (TDA) / ft²	1.03 / 11.08	0.91 / 9.79	0.78 / 8.39	0.66 / 7.10
Energy consumption in 365 days *	1119 kWh	1076 kWh	811 kWh	662 kWh
Ambient temperature in °F (°C)	50°F to 95°F (10°C to 35°C)	50°F to 95°F (10°C to 35°C)	50°F to 95°F (10°C to 35°C)	50°F to 95°F (10°C to 35°C)
Refrigerant	R290	R290	R290	R290
Sound rating **	52 dB(A)	52 dB(A)	52 dB(A)	52 dB(A)
Connection rating	5.5 A/299 W	5.5 A/271 W	2.5 A/238 W	2.5 A/224 W
Frequency / Voltage	60 Hz/115 – 127V~	60 Hz/115 -127V~	60 Hz/115 – 127V~	60 Hz/115 – 127V~
Cooling system	static	static	static	static
Defrost	manual	manual	manual	manual
Temperature range °F (°C)	14°F to -11°F (-10°C to -24°C)	14°F to -11°F (-10°C to -24°C)	14°F to -11°F (-10°C to -24°C)	14°F to -11°F (-10°C to -24°C)
Lid material	sliding glass lid	sliding glass lid	sliding glass lid	sliding glass lid
External cabinet finish	steel/white	steel/white	steel/white	steel/white
Internal liner material	steel	steel	steel	steel
Frame color	grey	grey	grey	grey
Type of control	analog control	analog control	analog control	analog control
Temperature display	internal analogue	internal analogue	internal analogue	internal analogue
Interior light	LED	LED	LED	LED
Number of baskets	8	7	6	5
Number of baskets, max (see picture)	8	7	6	5
Castors	swivel castors	swivel castors	swivel castors	swivel castors
Lock	can be retrofitted	can be retrofitted	can be retrofitted	can be retrofitted
Insulation in inches (mm)	2 3/8" (60)	2 3/8" (60)	2 3/8" (60)	2 3/8" (60)
Water drain	yes	yes	yes	yes
Gross/net weight in lbs (kg)	203.9 / 181.4 (92.5 / 82.3)	196 / 174.6 (88.9 / 79.2)	172 / 152.3 (78 / 69.1)	153.9 / 135.8 (69.8 / 61.6)
Accessories				
Basket 270 mm	7111095	7111095	7111095	7111095
Basket 210 mm	7111097	7111097	7111097	7111097
Partition grid 270 mm	7111029	7111029	7111029	7111029
Partition grid 210 mm	7111784	7111784	7111784	7111784
Rubber bumpers, grey	7266707	7266707	7266707	7266707
Cylinder lock for glass sliding lid	7043660	7043660	7043660	7043660
Scoop ice cream containers	on request	on request	on request	on request
Baskets for scoop ice cream containers	on request	on request	on request	on request
External thermostat dial	on request	on request	on request	on request



Sales chest freezers	EFE 3052 LED	EFE 2252 LED	EFE 1552 LED	EFE 1152 LED
Total gross/net capacity cu.ft. (l)	10.4 / 7.8 (294 / 222)	7.8 / 5.8 (220 / 163)	5.1 / 3.7 (145 / 105)	3.8 / 3.0 (108 / 84)
Exterior dimensions in inches (w/d/h) in mm (w/d/h)	41 3/16" / 26 13/16" / 32 1/2" 1045 / 680 / 825	32 7/8" / 26 13/16" / 32 1/2" 835 / 680 / 825	24 5/8" / 26 13/16" / 32 1/2" 625 / 680 / 825	29 5/8" / 18 15/16" / 32 1/2" 751 / 481 / 825
Interior dimensions in inches (w/d/h) in mm (w/d/h)	36 1/4" / 21 1/8" / 20 5/8" 920 / 535 / 523	28" / 21 1/8" / 20 5/8" 710 / 535 / 523	19 11/16" / 21 1/8" / 20 5/8" 500 / 535 / 523	23 7/8" / 12 7/16" / 25 7/8" 605 / 315 / 657
Total display area in m² (TDA) / ft²	0.54 / 5.81	0.42 / 4.52	0.30 / 3.22	0.16 / 1.72
Energy consumption in 365 days *	637 kWh	459 kWh	381 kWh	358 kWh
Ambient temperature in °F (°C)	50°F to 95°F (10°C to 35°C)	50°F to 95°F (10°C to 35°C)	50°F to 95°F (10°C to 35°C)	50°F to 95°F (10°C to 35°C)
Refrigerant	R290	R290	R290	R290
Sound rating **	42 dB(A)	42 dB(A)	42 dB(A)	42 dB(A)
Connection rating	2.5 A/208 W	2.5 A/199 W	2.5 A/188 W	2.5 A/150 W
Frequency / Voltage	60 Hz/115 – 127V~	60 Hz/115 – 127V~	60 Hz/115 – 127V~	60 Hz/115 – 127V~
Cooling system/Defrost	static/manual	static/manual	static/manual	static/manual
Temperature range °F (°C)	14°F to -11°F (-10°C to -24°C)	14°F to -11°F (-10°C to -24°C)	14°F to -11°F (-10°C to -24°C)	14°F to -11°F (-10°C to -24°C)
Lid material	sliding glass lid	sliding glass lid	sliding glass lid	sliding glass lid
External cabinet finish	steel/white	steel/white	steel/white	steel/white
Internal liner material	steel	steel	steel	steel
Frame color	grey	grey	grey	grey
Type of control/Temperature display	analog control/internal analogue	analog control/internal analogue	analog control/internal analogue	analog control/internal analogue
Interior light	LED	LED	LED	LED
Number of baskets	4	3	2	3
Number of baskets, max (see picture)	4	3	2	3
Castors	swivel casters	swivel casters	swivel casters	swivel casters
Lock	can be retrofitted	can be retrofitted	can be retrofitted	can be retrofitted
Insulation in inches (mm)	2 3/8" (60)	2 3/8" (60)	2 3/8" (60)	2 3/8" (60)
Water drain	yes	yes	yes	yes
Gross/net weight in lbs (kg)	137.1 / 120.6 (62.2 / 54.7)	121.5 / 106.7 (55.1 / 48.4)	106.9 / 93.9 (48.5 / 42.6)	94.1/86 (42.7/39)
Accessories				
Basket 270 mm	7111095	7111095	7111095	
Basket 210 mm	7111097	7111097	7111097	
Partition grid 270 mm	7111029	7111029	7111029	
Partition grid 210 mm	7111784	7111784	7111784	
Partition grid 195 mm				7111712
Basket				7112788
Rubber bumpers, grey	7266707	7266707	7266707	7266707
Cylinder lock for glass sliding lid	7043660	7043660	7043660	7043660
Scoop ice cream containers	on request	on request	on request	on request
Baskets for scoop ice cream containers	on request	on request	on request	on request
External thermostat dial	on request	on request	on request	on request

The advantages at a glance



The **display illuminated by energy-efficient LEDs** attracts attention to the appliance and its contents. The display panel can be customized and switched in parallel with the interior light. In addition, specific branding attracts attention to a brand or product. A wide variety of color options are available for the housing and door frame.

Customized branding options on the display (FDv), the housing and the door frame attract attention to brands or a company and support sales promotion.

The **NoFrost module** is installed behind the display and enables maximum usage of the interior.



The **high-performance forced-air cooling system** rapidly cools down products and maintains a uniform cooling temperature throughout the interior.



The **toughened slimline door handle** is ergonomic, easy to grasp and easy to clean.



The **heavy-duty wire shelves** are plastic-coated and have a loading capacity of up to 110 lbs. (50kg). A door opening angle of 90° makes it **easy and quicker to adjust shelves positions**.



The **molded inner liner** made of food-safe polystyrol is odorless, very sturdy and durable. It enables perfect hygiene thanks to the generously radiused, easy-to-clean corners.

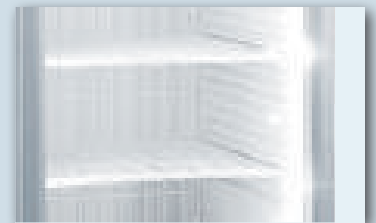
The natural and **environmentally friendly refrigerant R 290** is CFC free and, in conjunction with highly efficient compressors, very energy-efficient.



The **highly efficient hot gas defrost system** reduces defrost time to approximately 10 minutes, which distinctly reduces the temperature rise in the appliance. The food quality is preserved for a longer period of time because the products do not have to be removed during the defrost phase and are not exposed to unnecessary temperature fluctuations.



The **vertical LED lighting** mounted on one side ensures bright illumination of the interior and supports sales promotion with optimum product presentation. The option for both sides is available upon request.



The glass doors, with toughened **aluminum frames**, have a 90° dwell position, allowing easy loading and removal of larger product quantities. At less than 60° the doors close automatically to prevent the loss of cold air.



The **triple-pane glass door** reduces energy consumption and condensation on the outside of the door.



The air-deflection baffle, mounted in the lower part of the inner liner, deflects the flow of cold air away from the glass door and thus **prevents condensation from forming on the outside of the door**. The improved glass door insulation also helps to reduce condensation formation on the door and thereby facilitates optimum product presentation (FDv 4643).



A special **anti-fog film** significantly delays misting on the inside of the door after opening and closing, to consistently ensure optimum visibility of the products stored.

The **digital temperature display** tells the user the exact internal temperature that has been set. The temperature range can be set from -10°C to -25°C (14°F to -13°F) using the precision electronic controller.

The **robust lock** prevents unauthorized access.

Optimum product presentation for frozen foods

Attractive product presentation is crucial for drawing the customers' attention to products. These modern glass door freezers, in an attractive anthracite-aluminum design, offer real promotional advantages: The interior is fitted with twin side-mounted, vertical LED lighting to create outstanding illumination inside the cabinet. The glass door has a special anti-fog film treatment which significantly delays the misting of its inner surface upon opening, to always allow a clear view of the goods. The newly integrated air-deflection baffle, together with improved glass door insulation, prevents water condensation from forming on the outside of the door, thus guaranteeing good visibility of products at all times.



Anti-fog film for improved product visibility

A special anti-fog film significantly delays misting on the inside of the door after opening and closing, to consistently ensure optimum visibility for the products stored.

Lower energy consumption

Thanks to the improved glass door insulation, the energy consumption has been reduced. The triple-pane glass contributes considerably to the freezer's excellent energy efficiency.



No condensation formation

The air-deflection baffle, mounted in the lower part of the inner liner, deflects the flow of cold air away from the glass door and thus prevents condensation from forming on the outside of the door. The improved glass door insulation also helps to reduce condensation formation on the door and thereby facilitates optimum product presentation.



Freezers for sales promotion

Total gross/net capacity cu.ft. (l)	
Exterior dimensions in inches (w/d/h)	
in mm (w/d/h)	
Interior dimensions in inches (w/d/h)	
in mm (w/d/h)	
Energy consumption in 365 days *	
Ambient temperature in °F (°C)	
Refrigerant	
Sound rating **	
Connection rating	
Frequency / Voltage	
Cooling system	
Defrost	
Temperature range °F (°C)	
External cabinet finish	
Door material	
Internal liner material	
Type of control	
Temperature display	
Interior light	
Alarm	
Adjustable shelves	
Shelf material	
Shelf load weight in lbs (kg)	
Handle	
Castors	
Lock	
Self-closing door	
Door hinges	
Insulation in inches (mm)	
Gross/net weight in lbs (kg)	
Accessories	
Baskets, 30 litres	
Partition grid for 30-litre basket	
Scanner rail	
Shelf, plastic-coated	

FDvb 4643



16.3 / 13.6 (461 / 385)
26 7/16" / 28 3/4" / 77 1/16"
670 / 730 / 1957
21" / 22 3/8" / 50 1/4"
532 / 568 / 1275
3833 kWh
50°F to 86°F (10°C to 30°C)
R290
62 dB(A)
8.0 A/660 W
60 Hz/115V~
forced-air
automatic
14°F to -11°F (-10°C to -24°C)
steel/black
glass
commercial grade molded polystyrol
electronic control
external digital
LED
visual and audible
4
wire shelves plastic-coated
110.2 (50)
ergonomic slimline handle
2 fixed rear and 2 swivel front castors
recessed
yes
right hand hinged, not reversible
2 11/16" (67)
339.5 / 310.8 (154 / 141)
7111758
7111759
7443779
7438722

Fvb 3613



12.9 / 10.4 (365 / 294)
26 7/16" / 28 3/4" / 63 11/16"
670 / 730 / 1617
21" / 22 3/8" / 38 3/16"
532 / 568 / 969
3687 kWh
50°F to 86°F (10°C to 30°C)
R290
62 dB(A)
8.0 A/715 W
60 Hz/115 – 127V~
forced-air
automatic
14°F to -13°F (-10°C to -25°C)
steel/black
glass
commercial grade molded polystyrol
electronic control
external digital
LED
visual and audible
3
wire shelves plastic-coated
110.2 (50)
ergonomic slimline handle
2 fixed rear and 2 swivel front casters
recessed
yes
right hand hinged, not reversible
2 11/16" (67)
228.2 / 207.5 (103.5 / 94.1)
7111758
7111759
7443779
7438722

Section: Chest freezers

Baskets

Products can be presented in a clearly sorted arrangement with suspended baskets.



Partition grid

The partition grids for baskets support optimum product presentation and allow for flexible organization of the interior.



Lid lock

A lid lock can be installed on all models to secure the contents of the chest freezers.



Rubber bumpers

Rubber bumpers can be fixed to provide better ventilation when freezers are placed next to each other and to avoid damage during moving.



Glass canopy

The robust glass fixture, made from toughened safety glass, protects ice cream from contamination when selling and helps to ensure goods are presented in an attractive manner. The extra deep front of the glass fixture ensures excellent visibility of products and means that customers always have a good view of the goods presented from a range of different angles. The LED interior lights in appliances EFI 3553 and EFI 4853 also contribute to this. Cone holders, napkins and any other typical ice cream accessories can be conveniently placed on the flat shelf area. Only available for EFI 3553 and EFI 4853.



Wire basket for scoop-ice containers

The sturdy wire baskets for scoop-ice containers are specially configured for the EFI and EFE chest freezers. Containers can be optimally arranged in the wire baskets so that ice cream is perfectly presented and conveniently set out for selling by the scoop.



Section: Forced-air display freezers

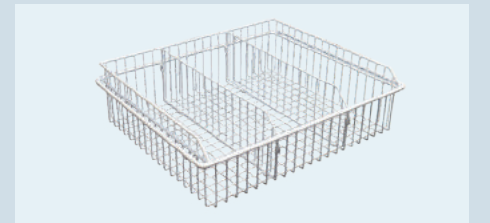
Baskets

These heavy-duty baskets have capacities of up to 8 gallons (30 liters).



Partition grid for baskets

The partition grids for baskets support optimum product presentation and allow for flexible organization of the interior.



Scanner rail 20 5/8" (525mm)

Price tags and scan codes can easily be read on the practical scanner rail, which is fastened to the front of the shelves. The paper inserts can be used for pricing, branding or other useful customer information.



Shelves

The plastic-coated grid shelves are height-adjustable and allow for variable use of the interior for different frozen products. The close-mesh grid shelves have an extremely high loading capacity and ensure secure positioning of the products.



Base-grid, plastic-coated

A sturdy, plastic-coated base-grid ensures optimum use of the appliance base. The base-grid protects the inner liner from damage and ensures secure product storage.



For frozen display without compromise

Liebherr's compact yet spacious Counter-top appliances enhance your sales when space is limited. In bars, restaurants or on sales counters, the Liebherr CounterTop appliances attract impulse purchases of beverages and ice cream. They combine the flexible use of storage space, bright and efficient LED lighting and maximum product

visibility. Customized color schemes and unique branding possibilities ensure that the focus is on what's most important—the products for sale. Low energy consumption, compact design, flexible use and robust build-quality are also good reasons to choose Liebherr Counter-top appliances.



Vertical LED interior light

Ideal for attractive product presentation. The LED light column is integrated in the side wall and ensures attractive illumination. As a result, the focus is always on the products.



Temperature display

The LED temperature display is integrated in the front panel of the Counter-top Fv 913. The temperature can be precisely set and clearly displayed.



Fan-assisted cooling

On the Counter-top appliances BCv 1103 and Fv 913, highly efficient fans ensure that contents are frozen or cooled rapidly, guaranteeing uniform temperature distribution throughout the entire interior. Liebherr's dynamic cooling system is a huge advantage during events when appliances are frequently restocked.



Door profiles, recessed grip, replaceable gaskets

Aluminum door profiles with a continuous recessed grip are not only elegant, they also make the door easier to open. The replaceable door gasket adds to its efficient operation. It can easily be inserted, cleaned or replaced, enabling perfect hygiene.



Replaceable door hinge

The Counter-top appliances are right-hand hinged as standard and can be changed to the left if necessary. They can be adapted on site as needed.



Wire shelves

The plastic-coated grid shelves are height-adjustable in 5/8" (15mm) increments and the interior can be arranged and used in a variable manner depending on the size of the products. This means the customers always have easy access to the contents. The shelves are close-meshed for even small items and extremely resilient so that products are always stored securely. There is also a bar across the front of the shelf to prevent items from falling out.



Counter-top Appliances	Fv 913 Premium	F 913	BCv 1103
	No Frost	LED	LED
Total gross/net capacity cu.ft. (l)	3.3 / 2.3 (93 / 66)	3.1 / 3.1 (88 / 88)	4.1 / 3.0 (115 / 84)
Exterior dimensions in inches (w/d/h)	19 5/8" / 22" / 32 3/16"	19 5/8" / 22" / 32 3/16"	19 5/8" / 21 5/8" / 32 11/16"
in mm (w/d/h)	497 / 558 / 816	497 / 558 / 816	497 / 548 / 830
Interior dimensions in inches (w/d/h)	16 7/16" / 15 7/16" / 24 1/16"	14 7/8" / 16 15/16" / 24 1/16"	16 7/16" / 15 7/16" / 25 11/16"
in mm (w/d/h)	417 / 391 / 611	377 / 430 / 611	417 / 391 / 651
Energy consumption in 365 days *	909 kWh	490 kWh	398 kWh
Ambient temperature in °F (°C)	50°F to 86°F (10°C to 30°C)	50°F to 86°F (10°C to 30°C)	50°F to 90°F (10°C to 32°C)
Refrigerant	R290	R290	R600a
Sound rating **	60 dB(A)	50 dB(A)	49 dB(A)
Connection rating	2.0 A/210 W	2.0 A/180 W	2.0 A/110 W
Voltage / Frequency	60 Hz/115V~	60 Hz/115V~	60 Hz/115V~
Cooling system	forced-air	static	forced-air
Defrost	automatic	manual	automatic
Temperature range °F (°C)	14°F to -13°F (-10 °C to -25 °C)	14°F to -13°F (-10 °C to -25 °C)	36°F to 54°F (2 °C to 12 °C)
External cabinet finish	steel/silver	steel/silver	steel/silver
Door material	glass door	glass door	glass door
Internal liner material	steel	steel	steel
Type of control	electronic control	analog control	analog control
Temperature display	external digital	internal analogue	internal analogue
Interior light	LED light column on right	LED light column on right	LED light column on right
Alarm	visual and audible		
Adjustable shelves	4	4	2
Shelf material	wire shelves plastic-coated	wire shelves plastic-coated	wire shelves plastic-coated
Loading Ice Cream pint containers	54	54	
Loading capacity 0.33L can			138
Shelf load weight in lbs (kg)	66.1 (30)	66.1 (30)	66.1 (30)
Handle	recessed grip	recessed grip	recessed grip
Lock	recessed	recessed	recessed
Self-closing door	yes	yes	yes
Door hinges	right, reversible on site	right, reversible on site	right, reversible on site
Insulation in inches (mm)	2 3/8" (60)	2 3/8" (60)	1 5/8" (40)
Gross/net weight in lbs (kg)	107.8 / 102.3 (48.9 / 46.4)	105.4 / 99.9 (47.8 / 45.3)	95.2 / 89.7 (43.2 / 40.7)
Accessories			
Scanner rail	7444051	7444051	7444050
Shelf, plastic-coated	7113033	7113035	7113031
Stacking kit silver color, left	9875217	9875217	9875217
Stacking kit silver color, right	9875225	9875225	9875225

To make the best use of the available space, with the connecting frame, Counter-top appliances BCv1103 (refrigeration) and Fv 913 or F 913 (both freezing) can be combined on top or next to one another.

Scanner Rails

The scanner rails are clipped onto the shelves and can be changed quickly. Scan codes or individual advertising messages can also be shown here in an easy-to-read position. To help when removing products, the flexible scanner rails fold upwards.

Stacking Kit

Counter-top fridges and freezers can be placed on top of one another so as to make the best use of the available space.



Refrigerators for the beverage industry

Exact standards are demanded of refrigerators in the beverage industry. From highest-quality material selection to refrigeration component design to design development, long-term use of the appliances is always given top priority at Liebherr. This also applies to the benefits for our customers: Liebherr models are therefore not only easy to load, but also easy to clean, convenient to use, space-saving as well as energy-efficient and economical in continuous operation. And they enable optimum product presentation. Attractive branding options allow you to effectively present your brand on Liebherr appliances and stimulate impulse buying. Featuring innovative ideas, premium quality and top design, Liebherr offers a wide range of suitable models for the beverage industry for almost any application.



Increase awareness of your brand

Your branding in the right light



BlackSteel

BlackSteel is a visually stunning and exceptionally appealing black stainless steel. Paired with a high-quality SmartSteel finish, BlackSteel lends an appliance both high-tech appeal and timeless elegance. The transverse-polished finish gives BlackSteel appliances a compelling and exclusive appearance, and significantly reduces the visibility of fingerprints on the doors and side walls. The finish is also easy to clean and much less sensitive to scratches.



LED lighting integrated into the glass door

A unique design can be engraved on the inside of the glass door and illuminated with LEDs. Only the design is illuminated so that it stands out.



Customized color design

Customized color design enables an eye-catching presentation of your brand and an extremely attractive product display. Different materials and effects can be used to individually design the side walls, the door frames, the handle, the base compartment, the display frame and the inner liner, according to your specifications.

With unique branding options and special features, Liebherr appliances meet nearly every demand. The wide selection of models and our versatile accessory range make it easy to find the perfect solution for every application.

Vinyls

Depending on the quantity and design, the branding element is applied on a suitable vinyl sticker, usually PC foil, in a screen printing or digital printing process. The vinyl stickers are then applied to the appliance, usually by Liebherr in the factory.



Glass door branding

Vinyls with individually designed motifs can be applied to the glass door. They are also available as "non-permanent" stickers which can be easily and completely removed at any time.



Dye-sublimation

This process is carried out in two steps. First, the sublimation paper is produced in a digital inkjet process. Then, the design is transferred to a blank, shaped base material—a flat and specially coated sheet of metal.



Beverage Coolers	BCDv 4613	LED
Total gross/net capacity cu.ft. (l)	16.3 / 13.6 (461 / 385)	
Exterior dimensions in inches (w/d/h)	26 7/16" / 28 3/4" / 78 3/4"	
in mm (w/d/h)	670 / 730 / 1999	
Interior dimensions in inches (w/d/h)	21" / 22 3/8" / 50 1/4"	
in mm (w/d/h)	532 / 568 / 1275	
Energy consumption in 365 days *	673 kWh	
Ambient temperature in °F (°C)	50°F to 86°F (10°C to 30°C)	
Refrigerant	R290	
Sound rating **	62 dB(A)	
Connection rating	5.0 A/XXX W	
Voltage / Frequency	60 Hz/115V~	
Cooling system/Defrost	forced-air/automatic	
Temperature range °F (°C)	36°F to 59°F (2 °C to 15 °C)	
External cabinet finish	steel/black	
Door material	glass door	
Internal liner material	commercial grade molded polystyrol	
Type of control/Temperature display	electronic control/external digital	
Interior light	LED	
Alarm	visual and audible	
Adjustable shelves	4	
Shelf material	wire shelves plastic-coated	
Shelf load weight in lbs (kg)	110.2 (50)	
Handle	ergonomic slimline handle	
Castors	2 fixed rear and 2 swivel front casters	
Lock	recessed	
Self-closing door	yes	
Door hinges	right hand hinged, not reversible	
Insulation in inches (mm)	2 11/16" (67)	
Gross/net weight in lbs (kg)	317.5/288.8 (144/131)	
	This model is also available with lefthand hinges, not reversible.	
Accessories		
Baskets, 30 litres/8 gallons	7111758	
Partition grid for 30-litre basket	7111759	
Scanner rail	7443779	
Shelf, plastic-coated		
Shelf Top	7438722	
Shelf Bottom	7438721	

FCb 2613	LED	FCb 2713	LED
9.9 / 7.3 (280 / 208)		10.9 / 8.2 (310 / 232)	
24 15/16" / 25 3/4" / 53 9/16"		24 15/16" / 25 3/4" / 58 1/16"	
632 / 653 / 1359		632 / 653 / 1474	
20" / 16 1/8" / 47 1/2"		20" / 16 1/8" / 52"	
507 / 409 / 1205		507 / 409 / 1320	
579 kWh		600 kWh	
50°F to 86°F (10°C to 30°C)		50°F to 86°F (10°C to 30°C)	
R290		R290	
53 dB(A)		53 dB(A)	
4.0 A/375 W		4.0 A/XXX W	
60 Hz/115V~		60 Hz/115V~	
forced-air/automatic		forced-air/automatic	
32°F to 54°F (0 °C to 12 °C)		32°F to 54°F (0 °C to 12 °C)	
steel/black		steel/black	
glass door		glass door	
commercial grade molded polystyrol		commercial grade molded polystyrol	
analog control		analog control	
LED light column on both sides and LED ceiling lighting		LED light column on both sides and LED ceiling lighting	
4		5	
wire shelves plastic-coated		wire shelves plastic-coated	
66.1 (30)		66.1 (30)	
ergonomic slimline handle		ergonomic slimline handle	
yes		yes	
right, reversible on site		right, reversible on site	
1" (24)		1" (24)	
169.8 / 158.7 (77 / 72)		180.8 / 169.8 (82 / 77)	
9035235		9035235	

Accessories

Scanner rail

Price tags and scan codes can easily be displayed using the practical scanner rail. It easily attaches to the front of the grid shelves. The scanner rail inserts can also be used for branding purposes when several brands are on display.



Liebherr USA, Co.
Appliance Division
15101 NW 112th Avenue
Hialeah Gardens, FL 33018
+1 (866) LIEBHERR (543-2437)
Refrigeration.USA@liebherr.com

Subject to modification. For up-to-date information, visit home.liebherr.com.

home.liebherr.com