

CATALOG #: \_\_\_\_\_

TYPE: \_\_\_\_\_

PROJECT: \_\_\_\_\_

## FEATURES



- Available in various uplight, downlight, closed-top, and divided lamp options
- Pull switch and grounded convenience outlet options available (120V only)
- All-welded construction
- Versatile, durable fixture is ideal for many different applications
- Optional anti-microbial finish for healthcare applications
- Frosted acrylic prismatic diffusers enclose both top and bottom of fixture
- High-performance up to 120 lm/W
- Wireless in-fixture control solutions available
- Made Right Here® in the USA

## SPECIFICATIONS

- HOUSING** – 20-gauge, die-formed, welded C.R.S.
- SHIELDING** – Frosted acrylic prismatic top lens. High-impact frosted acrylic prismatic bottom lens.
- FINISH** – 92% minimum average reflective white polyester powder coat bonded to phosphate-free, multi-stage pretreated metal. All parts painted after fabrication to facilitate installation, increase efficiency, and inhibit corrosion.
- ELECTRICAL** – High-quality mid-power LED boards. L70 >50,000 hours per IES TM-21
- MOUNTING** – Wall.
- LISTINGS** –
  - cCSAus certified as luminaire suitable for dry or damp locations.
  - Complies with the Buy American Act and other federal regulations. Request certification at [hew.com/baa](http://hew.com/baa).
- WARRANTY** – 5-year limited warranty, see [hew.com/warranty](http://hew.com/warranty).

## ORDERING EXAMPLE: 29 - 4 - L54/835 - AF - OPTIONS - CONTROL/DRV - UNV

### ORDERING INFO

SERIES	LENGTH	LUMENS <sup>[1]</sup>	CRI	CCT	SHIELDING
29	2 2'	2'	8 80	27 2700K	AF Frosted acrylic
	3 3'	L27 2,700lm	9 90 <sup>[2]</sup>	30 3000K	
	4 4'	L54 5,400lm	35 3500K	40 4000K	
		3'	L40 4,000lm	50 5000K	
	4'	L79 7,900lm			
		L54 5,400lm			
	L106 10,600lm				

### OPTIONS <sup>[3]</sup>

<b>EM/7W</b>	7-watt emergency battery	<b>DL-PSR/120</b>	Divided light with single-circuit pull switch on right <sup>[10]</sup>
<b>EM/10W</b>	10-watt emergency battery	<b>DL-PSL/120</b>	Divided light with single-circuit pull switch on left <sup>[11]</sup>
<b>(L__)</b>	Additional lower lumen packages available. Example: 3,000 nominal lumens = 29-4-L54/835-AF-(L30). <sup>[4]</sup>	<b>DL-PS2R/120</b>	Divided light with 2-circuit internal, 4-position pull switch on right <sup>[12]</sup>
<b>CT</b>	Closed-top <sup>[5]</sup>	<b>DL-PS2L/120</b>	Divided light 2-circuit internal, 4-position pull switch on left <sup>[13]</sup>
<b>GLR</b>	Fuse, fast blow <sup>[6]</sup>	<b>GCO</b>	Grounded convenience outlet <sup>[14]</sup>
<b>DL</b>	Divided light compartment <sup>[7]</sup>	<b>GFCO</b>	Ground fault convenience outlet <sup>[15]</sup>
<b>PSR/120</b>	Single-circuit pull switch on right <sup>[8]</sup>	<b>AMW</b>	Anti-microbial white finish
<b>PSL/120</b>	Single-circuit pull switch on left <sup>[9]</sup>		

### CONTROL

See page 5 for ADDITIONAL CONTROL/DRIVER OPTIONS.

–	None
<b>AVI-LVFA</b>	Avi-on wireless fixture control <sup>[16]</sup>
<b>AWN</b>	Lutron Athena wireless node integral fixture control, RF only <sup>[17]</sup>

### DRIVER

See page 5 for ADDITIONAL CONTROL/DRIVER OPTIONS.

<b>DIM</b>	Driver with external dimming wires
<b>DRV</b>	Driver without external dimming wires
<b>DA</b>	Driver with 12V auxiliary power, without external dimming wires <sup>[18]</sup>
<b>DSR</b>	Sensor-ready driver without external dimming wires (D4i DALI-2) <sup>[19]</sup>

### VOLTAGE

<b>120</b>	120V
<b>277</b>	277V
<b>UNV</b>	120-277V
<b>347</b>	347V <sup>[20]</sup>

## NOTES

- Lumen output based on 80 CRI/3500K CCT. Actual performance may vary +/-5%. See page 2 for FIXTURE PERFORMANCE DATA.
- Extended lead times may apply. Consult factory for availability.
- See page 4 for FINISH OPTIONS. Custom colors available upon request. See page 4 for LOW-VOLTAGE CONTROLLER.
- Specify in increments of 100 nominal lumens. Option must be specified with next higher lumen package.
- Not available with any DL options.
- Requires one per driver; must specify voltage.
- Compartments switched and/or dimmed separately. See page 4 for CROSS SECTIONS.
- 120V only.
- 120V only.
- Operates downlight. Uplight is operated via wall switch, 120V only.

- Operates downlight. Uplight is operated via wall switch, 120V only.
- Operates both lights sequentially, 120V only.
- Operates both lights sequentially, 120V only.
- 120V only.
- 120V only.
- DA Driver only. See page 5 for AVI-ON BLUETOOTH WIRELESS CONTROL DETAILS.
- DA and DSR Drivers only.
- Avi-on and Lutron Athena Controls only.
- Lutron Athena Controls only.
- Not available with EM batteries, DA, or DSR drivers.



## FIXTURE PERFORMANCE DATA

LED PACKAGE	WATTAGE	STANDARD		CT OPTION		DL OPTION			
		DELIVERED LUMENS	EFFICACY (lm/W)	DELIVERED LUMENS	EFFICACY (lm/W)	UP DELIVERED LUMENS	DOWN DELIVERED LUMENS	EFFICACY (lm/W)	
2'	L27	21.4	2662	124	2329	109	1165	1331	117
	L54	42.4	5375	127	4703	111	2303	2632	116
3'	L40	32.1	4027	125	3484	109	1771	2024	118
	L79	64.1	7937	124	6911	108	3489	3982	117
4'	L54	42.2	5414	128	4703	111	2329	2662	118
	L106	83.9	10623	127	9431	112	4696	5353	120

- Photometrics tested in accordance with IESNA LM-79. Results shown are based on 25°C ambient temperature.
- Wattage shown is based on 120V input.
- Results based on 3500K, 80 CRI, actual performance may vary +/-5%
- To calculate lumen output in emergency mode, multiply the battery wattage by the efficacy.
- Use multiplier table to calculate additional options.

## MULTIPLIER TABLE

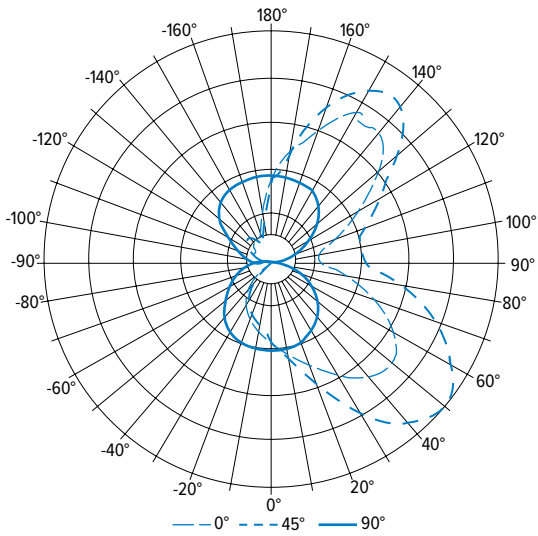
COLOR TEMPERATURE	
CCT	CONVERSION FACTOR
2700K	0.97
3000K	0.99
3500K	1.00
4000K	1.03
5000K	1.06

2700K	0.80
3000K	0.82
3500K	0.83
4000K	0.86
5000K	0.89

## PHOTOMETRY

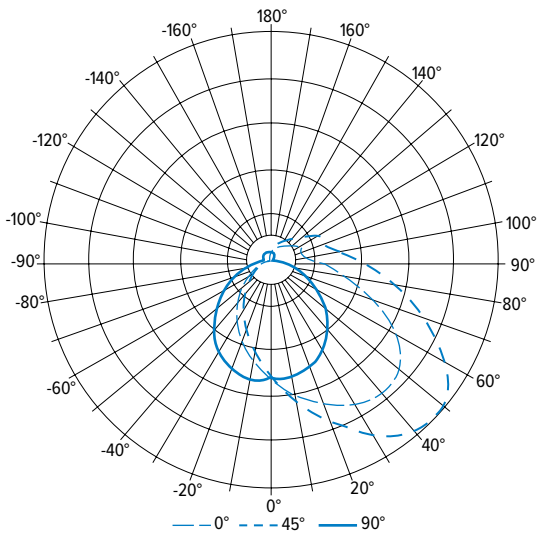
29-4-L106/835-AF-DIM-UNV Report #: 20306; 04/11/18 | Total Luminaire Output: 10623 lumens; 83.9 Watts | Efficacy: 126.6 lm/W | 80 CRI; 3500K CCT



VERTICAL ANGLE	HORIZONTAL ANGLE					ZONAL LUMENS
	0°	45°	90°	135°	180°	
0	1127	1127	1127	1127	1127	
5	1112	1106	1136	959	914	98
15	1464	1308	1127	862	803	308
25	1995	1575	1093	746	667	540
35	2561	1875	1019	590	490	772
45	2951	2075	894	424	320	952
55	2970	2020	724	262	177	1001
65	2519	1672	523	119	50	869
75	1993	1196	324	0	0	648
85	1438	793	144	0	0	437
90	1255	642	122	0	3	
95	1230	624	190	28	38	388
105	1225	785	326	139	76	494
115	1536	1144	510	245	275	664
125	1938	1638	728	270	393	827
135	2479	2127	937	321	435	886
145	2710	2214	1068	355	380	783
155	2408	2069	1121	354	227	557
165	1815	1640	1131	531	333	303
175	1146	1165	1141	891	717	96
180	1109	1109	1109	1109	1109	

LUMEN SUMMARY	ZONE	LUMENS	% FIXTURE
	0 - 30	946	9
0 - 40	1718	16	
0 - 60	3671	35	
0 - 90	5625	53	
90 - 120	1546	15	
90 - 150	4043	38	
90 - 180	4998	47	
0 - 180	10623	100	

29-4-L106/135-AF-CT-DIM-UNV Report #: 20309; 04/11/18 | Total Luminaire Output: 9431 lumens; 83.9 Watts | Efficacy: 112.4 lm/W | 80 CRI; 3500K CCT

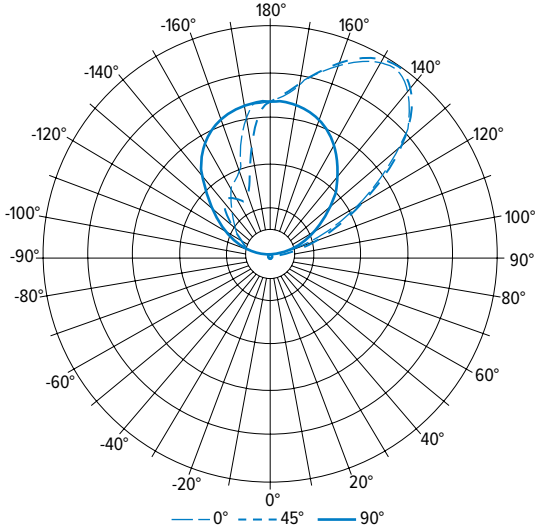


VERTICAL ANGLE	HORIZONTAL ANGLE					ZONAL LUMENS
	0°	45°	90°	135°	180°	
0	1985	1985	1985	1985	1985	
5	2196	2196	2056	1838	1711	190
15	2654	2466	1989	1562	1368	563
25	3168	2719	1860	1248	1037	912
35	3671	2927	1646	934	725	1201
45	3886	2964	1361	651	460	1365
55	3721	2710	1040	393	245	1344
65	3097	2157	698	178	68	1121
75	2415	1528	389	0	0	812
85	1748	1000	117	0	0	528
90	1502	817	72	0	0	
95	1324	625	74	0	0	356
105	1019	575	77	0	0	293
115	955	570	94	0	0	269
125	674	456	113	0	0	189
135	517	371	131	0	0	131
145	393	290	141	0	0	83
155	282	215	152	0	0	47
165	187	147	156	0	0	22
175	105	89	159	39	31	6
180	75	75	75	75	75	

LUMEN SUMMARY	ZONE	LUMENS	% FIXTURE
	0 - 30	1665	18
0 - 40	2866	30	
0 - 60	5574	59	
0 - 90	8035	85	
90 - 120	918	10	
90 - 150	1321	14	
90 - 180	1397	15	
0 - 180	9431	100	

# 29 LED Up/Down Wall Mount

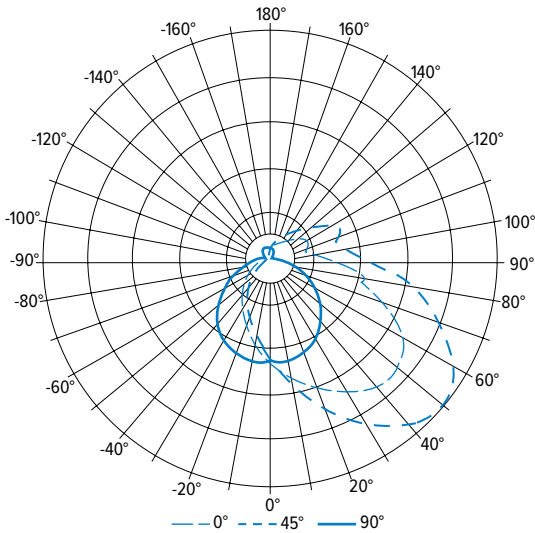
29-4-L106/835-AF-DL-DIM-UNV (Up only) Report #:20307; 04/11/18 | Total Luminaire Output: 4696 lumens; 42.1 Watts | Efficacy: 111.4 lm/W | 80 CRI; 3500K CCT



VERTICAL ANGLE	HORIZONTAL ANGLE					ZONAL LUMENS
	0°	45°	90°	135°	180°	
0	41	41	41	41	41	
5	31	36	47	47	46	4
15	27	30	49	54	54	12
25	22	25	44	46	47	17
35	21	22	39	36	33	20
45	22	22	28	21	15	17
55	23	21	21	13	13	14
65	21	20	13	5	6	10
75	18	17	7	1	3	7
85	15	15	3	0	0	4
90	24	20	14	9	8	
95	150	159	91	45	54	98
105	389	381	223	184	175	274
115	791	778	418	330	330	498
125	1492	1491	684	421	495	755
135	2121	2112	990	535	646	891
145	2398	2370	1250	733	771	815
155	2297	2255	1458	891	645	667
165	2014	1977	1575	1150	861	436
175	1694	1685	1648	1629	1430	157
180	1632	1632	1632	1632	1632	

LUMEN SUMMARY	ZONE	LUMENS	% FIXTURE
	0 - 30	33	1
	0 - 40	53	1
	0 - 60	85	2
	0 - 90	106	2
	90 - 120	870	19
	90 - 150	3330	71
	90 - 180	4590	98
	0 - 180	4696	100

29-4-L106/835-AF-DL-DIM-UNV (Down only) Report #: 20308; 04/11/18 | Total Luminaire Output: 5353 lumens; 42.1 Watts | Efficacy: 127.1 lm/W | 80 CRI; 3500K CCT

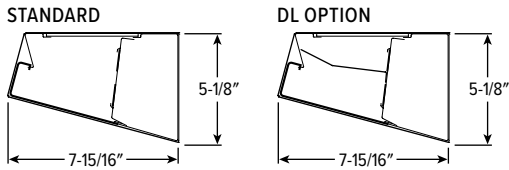


VERTICAL ANGLE	HORIZONTAL ANGLE					ZONAL LUMENS
	0°	45°	90°	135°	180°	
0	977	977	977	977	977	
5	1104	1086	1017	897	829	94
15	1358	1252	991	749	643	281
25	1676	1419	933	596	481	462
35	1977	1563	837	449	329	625
45	2164	1629	704	314	212	735
55	2130	1552	539	195	116	753
65	1851	1297	373	91	26	660
75	1509	931	206	0	0	486
85	1061	614	64	0	0	319
90	895	485	30	0	0	
95	778	383	31	0	0	210
105	665	363	40	0	2	189
115	701	402	55	3	9	196
125	478	315	69	4	17	135
135	359	250	82	7	18	92
145	252	187	90	10	14	58
155	180	140	99	11	6	35
165	122	101	100	20	10	17
175	75	68	99	44	35	5
180	61	61	61	61	61	

LUMEN SUMMARY	ZONE	LUMENS	% FIXTURE
	0 - 30	837	16
	0 - 40	1462	27
	0 - 60	2950	55
	0 - 90	4416	83
	90 - 120	595	11
	90 - 150	880	16
	90 - 180	937	18
	0 - 180	5353	100

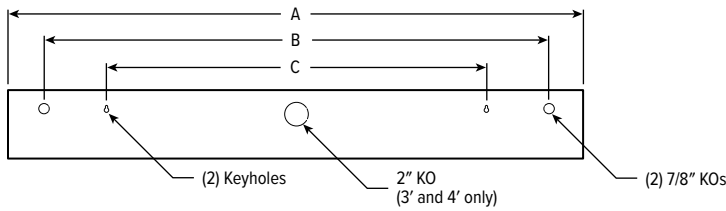
# 29 LED Up/Down Wall Mount

## CROSS SECTIONS



## FIXTURE DETAILS

### BACKVIEW



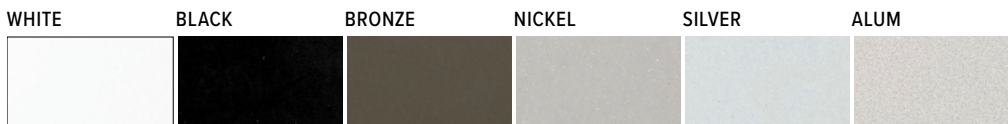
	A	B	C
2'	24-5/8"	19-1/8"	16-1/8"
3'	36-5/8"	31-7/8"	29-1/8"
4'	48-5/8"	42"	32"

## LOW-VOLTAGE CONTROLLER

CONTROLLER	FUNCTION	
	LOAD 1	LOAD 2
<b>LVC1</b> 1-circuit	- Blank, switches entire fixture U Up <sup>1</sup> D Down <sup>1</sup>	
<b>LVC2</b> 2-circuit	U/ Up <sup>1</sup>	D Down
<b>LVC3</b> Dimming control	<b>DIMU</b> 0-10V dimming for Uplight <sup>1</sup>	/D Down /DIMD 0-10V dimming for Downlight
	<b>DIMD</b> 0-10V dimming for Downlight <sup>1</sup>	/U Up /DIMU 0-10V dimming for Uplight
	<b>DIM</b> Dims entire fixture (not available with DL option) <b>SEQUD</b> Up and down sequentially switched <sup>1</sup>	

<sup>1</sup> Requires DL option.

## FINISH OPTIONS



For custom color, please specify RAL code or a manufacturer code with description. All custom colors other than RAL require two sample swatches, minimum 1" square.

SEE NEXT PAGE FOR CONTROL DETAILS

## AVI-ON BLUETOOTH WIRELESS CONTROL DETAILS

### FEATURES

#### Simple

- Gateway-free distributed control
- Factory pre-commissioning
- Contractor friendly installation
- Occupancy/vacancy/daylight sensing

#### Scalable

- Virtually unlimited network size
- Spans small offices to large warehouses
- Flexible control strategies

#### Secure

- Optional cloud connectivity
- UL IoT platinum security rating
- DLC 5.0 compliant

### COMMISSIONING & INSTALLATION TOOLS

Avi-on mobile apps provide intuitive, quick installation and commissioning. Pro tools are available to qualified installers. Live commissioning training and on-site or remote support by Avi-on must be ordered separately through Avi-on.



Commissioning Mobile App

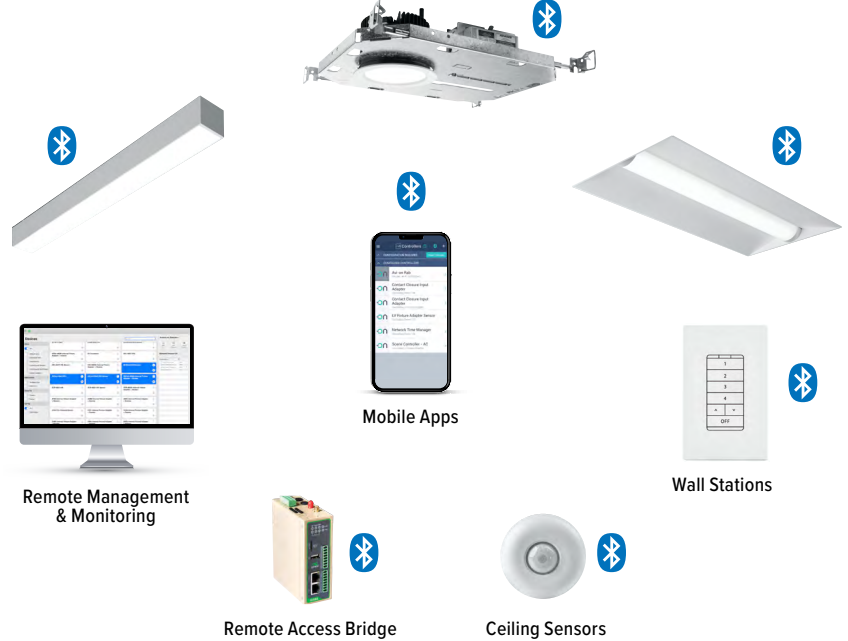


Zone Scanner Web App



Commissioning Pro App

### SYSTEM COMPONENTS



The Bluetooth® word mark and logos are registered trademarks owned by Bluetooth SIG, Inc. and any use of such marks by Avi-on is under license. Other trademarks and trade names are those of their respective owners.

### ACCESSORIES

WALL STATIONS	
AVI-2401AC	Scene controller - numbered 1-4, 120-277VAC
AVI-2402BAT	Scene controller - numbered 1-4, battery powered
AVI-2401AC-2	Dimmer with presets - percentages, 120-277VAC
AVI-2402BAT-2	Dimmer with presets - percentages, battery powered
AVI-2401AC-3	On/off/dimming, 120-277VAC
AVI-2402BAT-3	On/off/dimming, battery powered

NETWORK	
AVI-RAB-LTE	Remote access bridge – LTE connection
AVI-2001RAB-01-C	Remote access bridge – Wifi connection
AVI-KIT-NTM	Network time manager with battery backup

CEILING MOUNT SENSORS	
AVI-KIT-SEN-DUCM	PIR motion and ultrasonic sensor kit
AVI-KIT-SEN-ICM	PIR motion and photocell sensor kit

For load controllers and additional accessory info, see [hew.com/avi-on](http://hew.com/avi-on)

### ADDITIONAL CONTROL/DRIVER OPTIONS

Note: Lumen restrictions apply, consult product builder at [hew.com/product-builder](http://hew.com/product-builder).

CATALOG NUMBER	DESCRIPTION
AVI-LVFA/DA	Avi-on wireless fixture control for use with driver with 12V auxiliary power
AWNRR/DA	Lutron Athena wireless node integral fixture control, RF only, for use with driver with 12V auxiliary power
AWNRR/DSR	Lutron Athena wireless node integral fixture control, RF only, for use with sensor-ready driver (D4i DALI-2)
DRV	Driver prewired for non-dimming applications
DIM	Dimming driver prewired for 0-10V low voltage applications
DIM1	1% dimming driver prewired for 0-10V low voltage applications
DIM LINE	Line voltage dimming driver (TRIAC and ELV compatible, 120V only)
DIM TRC	Line voltage dimming driver (TRIAC compatible, 120V only)
SD40	40% step-dimming driver
SD50	50% step-dimming driver
DALI	DALI dimming driver
LDE1	Lutron Hi-lume 1% EcoSystem dimming LED driver

