



Industry's Fastest Terminating Panel.

Third-Hand Installation Aid.

Exceeds TSB-155 10GbE Over 55 Meters.

#### FEATURES

- Category 6 compliant.
- Backwards compatible to Category 5e, 5 and 3.
- IDC pair splitting tower allows for minimum disruption to cable twist.
- HPW icon compatible.
- High performance BeCu contacts.
- Fully enclosed, protected PCB circuitry.
- Compatible with all industry 110 impact tools.

#### SPECIFICATIONS

- ◆ Panel material: 14 ga. steel rolled-edge construction.
- ◆ Durable, black powder coat finish.
- ◆ Contact material: Beryllium copper with a minimum of 50 micro-inch Gold plating over nickel underplating.
- ◆ 2000+ mating cycles with FCC 8-position plug.
- ◆ Dimensions and mounting holes per EIA-310D.
- ◆ Towers: Flame retardant UL 94V-0.
- ◆ Jack Housing: flame retardant UL 94V-0.
- ◆ Contacts: Copper alloy with tin-lead plating.
- ◆ Housing designed to accommodate larger Category 6 conductors.

#### STANDARDS/LISTINGS/VERIFICATIONS

- ANSI/TIA/EIA-568-B.2-1 Category 6 component compliant.
- IEEE 802.3af DTE Power and MDI verified.
- IEEE 802.3ab 10-Gigabit Ethernet verified.
- 3rd party verified to 650 MHz (channel).
- UL Listed 1863.
- FCC part 68.5, subpart F compliant.
- IEC-603-7 compliant.
- ISO 11801 Class E compliant.

## HUBBELL NextSpeed Patch Panels, Category 6

#### Patented Panel ID Label Holders

Accepts Hubbell laser printable label sheets and industry recognized .5" hand held printer tape.

#### Rolled Edge Construction

provides rugged strength to eliminate flex during termination.

#### Cable Management

Optional cable management/strain relief bar (PCBLMGT) clips to the rear of panel without additional hardware.

#### Centered Port Identification

allows for greater visibility of labels and clean patch cord organization on a 48-port patch panel.

#### Universal Wiring

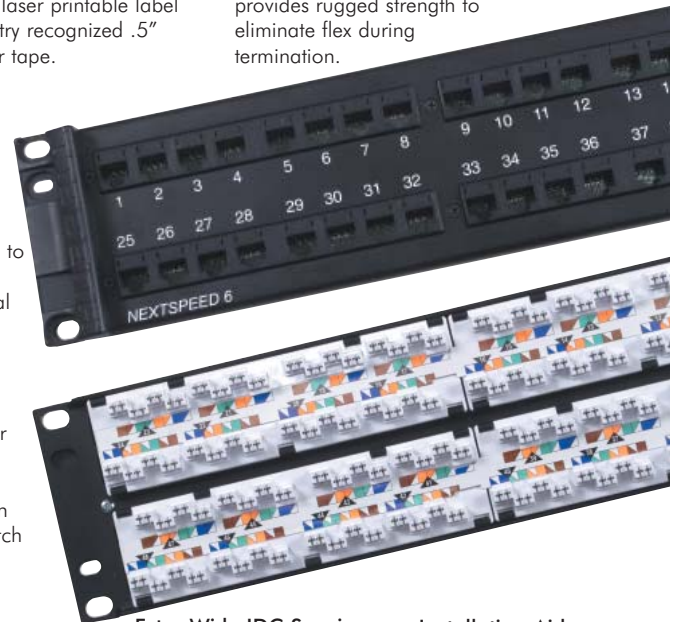
Terminate using either T568B or T568A Wiring schemes.

#### Extra Wide IDC Spacing

Provides increase space for lacing and routing cable.

#### Installation Aid

- Third hand location pin.
- Hands-free installation.
- Simplifies rack layout.



**NEXTSPEED® 6** panels exceed Category 6 ANSI/TIA/EIA 568-B.2-1 component specifications. This provides higher bandwidth to transmit data in excess of 250MHz, and allows your cabling system an error-free transmission path. Additionally, **NEXTSPEED® 6** panels are "center balanced" with Hubbell PCX6 patch cords to minimize common mode emissions and provide greater noise immunity.

Don't jeopardize your network, look to Hubbell's **NEXTSPEED®** Category 6 component solution products to "future-proof" your network, while providing the migration path required in today's demanding network environments and tomorrows emerging applications.

#### APPLICATIONS SUPPORTED

- ▲ Gigabit Ethernet 1000BASE-TX.
- ▲ 10/100/1000BASE-T.
- ▲ IEEE 802.3ab (<math>10^{-10}</math>) Gigabit Ethernet Verified.
- ▲ IEEE 802.3af DTE Power compliant.
- ▲ 155/622 Mbps ATM.
- ▲ Analog voice and digital voice (VoIP).
- ▲ Analog (broadband, baseband) and digital video.
- ▲ 100 Mbps TP-PMD.

**ORDERING INFORMATION**



**NEXTSPEED® Universal Patch Panel, Category 6**

Delivery: 1 Category 6, 19" patch panel, Universal wiring insert, Clear plastic label holders, 1 kit of mounting hardware.

Ports	Height	Rack Units	Protected PCB Catalog No.	Universal Angled Catalog No.	Non-Protected PCB Catalog No.
24	1.75" (45)	1	<b>P6E24U</b>	<b>P624VU</b>	<b>P624U</b>
48	3.50" (89)	2	<b>P6E48U</b>	<b>P648VU</b>	<b>P648U</b>
96	7.00" (178)	4	<b>P6E96U</b>	-	-



**ACCESSORIES**

**1-Punch Panel Termination Tool**



Description	Catalog No.
1-Punch panel tool with head and blades	<b>TX4PP</b>
1-Punch panel replacement head	<b>TX4PPH</b>
1-Punch panel replacement blades	<b>TX4PPBL</b>
1-pair punch-down tool blade	<b>TBLP</b>

**Rear Cable Management Bars**



Description	Catalog No.
Clips to rear of panels	<b>PCBLMGT</b>
Screws to rear flange of 19" rack	<b>MCCSWB19</b>

**Hubbell Labeling Solutions**

Use with Hubbell Labeling Software available on-line at [www.hubbell-premise.com](http://www.hubbell-premise.com)



Description	Catalog No.
Patch Panel Labels, 8-Port, laser-printable, adhesive Paper (use w/plastic holders supplied with panel)	<b>XPLPPA10W</b> <b>XPLPP10W*</b>
Patch Panel ID Labels, Laser Printable (Pack of 10) Paper (use with vertical ID label holders on panel)	<b>XPLPPID10W</b>
Extra Paper Label Holders	
8-port clear plastic paper holders (Pack of 50)	<b>XPHPP50</b>
1U panel ID label holders (Pack of 10)	<b>XPHPPID1U10</b>
2U panel ID label holders (Pack of 10)	<b>XPHPPID2U10</b>

**RELATED PRODUCTS**

**XCELERATOR™ Jacks, Category 6**

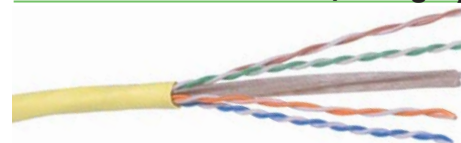
Unit Package: 1 per Bag. Order Qty.: Carton of 25

Catalog No. **HXJ6XX**

- XX = Color:  
 'AL' = Almond 'OW' = Office White  
 'B' = Blue 'OR' = Orange  
 'BK' = Black 'P25' = Purple\*  
 'EI' = Electric Ivory 'R' = Red  
 'GL25' = Gold\* 'TI' = Telco Ivory  
 'GY' = Gray 'W' = White  
 'GN' = Green 'Y' = Yellow  
 \* 25-packs only.



**NEXTSPEED® UTP Cable, Category 6, 4-Pair**



Color	Catalog No. Spool	Riser REELEX*	Catalog No. Spool	Plenum REELEX*
Blue	<b>C6SRB</b>	<b>C6RRB</b>	<b>C6SPB</b>	<b>C6RPB</b>
Gray	<b>C6SRGY</b>	<b>C6RRGY</b>	<b>C6SPGY</b>	<b>C6RPGY</b>
White	<b>C6SRW</b>	<b>C6RRW</b>	<b>C6SPW</b>	<b>C6RPW</b>
Yellow	<b>C6SRY</b>	<b>C6RRY</b>	<b>C6SPY</b>	<b>C6RPY</b>

\* REELEX is licensed and patented by Windings Inc.

**NEXTSPEED® Universal Patch Cords, Category 6**

Delivery: 1 patch cord

Catalog No. **PCX6XX\***

- XX = Standard Color:  
 'B' = Blue; 'BK' = Black;  
 'GY' = Gray; 'Y' = Yellow



For other colors replace color designation with one of the following:  
 OR = Orange; R = Red; GN = Green; P = Purple; W = White.

\* = Standard Length:  
 '03'=3'; '06'=6'; '08'=8'; '10'=10'; '12'=12'; '16'=16'; '20'= 20';  
 MTO lengths: 25', 30', 35', 40', 45', 50', 55', 60', and 75'.



**Hubbell Premise Wiring**

HUBBELL INCORPORATED (Delaware)  
 14 Lord's Hill Road • Stonington, CT 06378-0901 • (860) 535-8326 • 800-626-0005  
 Fax: (860) 535-8328 • Internet site: <http://www.hubbell-premise.com>

**Worldwide Locations**

Hubbell Premise Wiring, Asia Pacific	852-2836-7131	Fax: 852-2836-7132	Hubbell Premise Wiring, Latin America	305-408-4501	Fax: 305-408-8201
Hubbell Canada Inc.	905-839-1138	Fax: 905-839-9108	Hubbell de Mexico, S.A. de C.V.	(5255) 9151-9999	Fax: (5255) 9151-9989
Hubbell Premise Wiring, Central America	506-309-4158	Fax: 506-260-1616	Hubbell Premise Wiring, Middle East	971-4-393-4192	Fax: 971-4-393-4194
Hubbell Premise Wiring, China	8621-6309-0119	Fax: 8621-6309-0122	Hubbell-Taian Co., Ltd., Taiwan	886-2-2522-1862	Fax: 886-2-2522-1872
Hubbell Premise Wiring, Colombia	571-245-8940	Fax: 571-340-0925	Hubbell Premise Wiring, Turkey	90-216-313-5016	Fax: 90-216-414-8148
Hubbell Premise Wiring, Europe	44-01283 500500	Fax: 44-01283 500400	Hubbell Premise Wiring, Venezuela	58-416-680-7453	Fax: 58-281-274-7900
Hubbell Int'l. Inc., Korea Branch	82-2-(0)2607-1363	Fax: 82-2-(0)2603-7386			