

ASUS[®]
IN SEARCH OF INCREDIBLE

5X
PROTECTION III



SafeSlot Core



Surge-Protected
Networking



Overvoltage
Protection



Stable Power
Supply

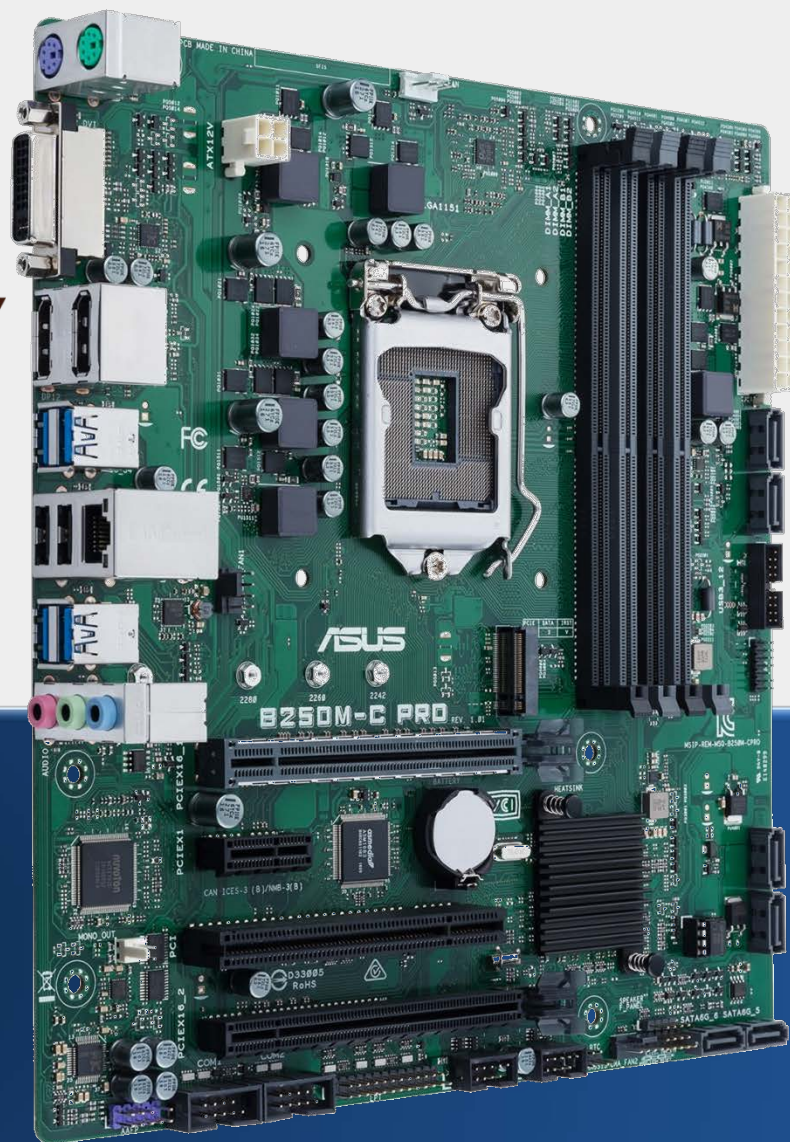


Stainless-Steel
Back I/O



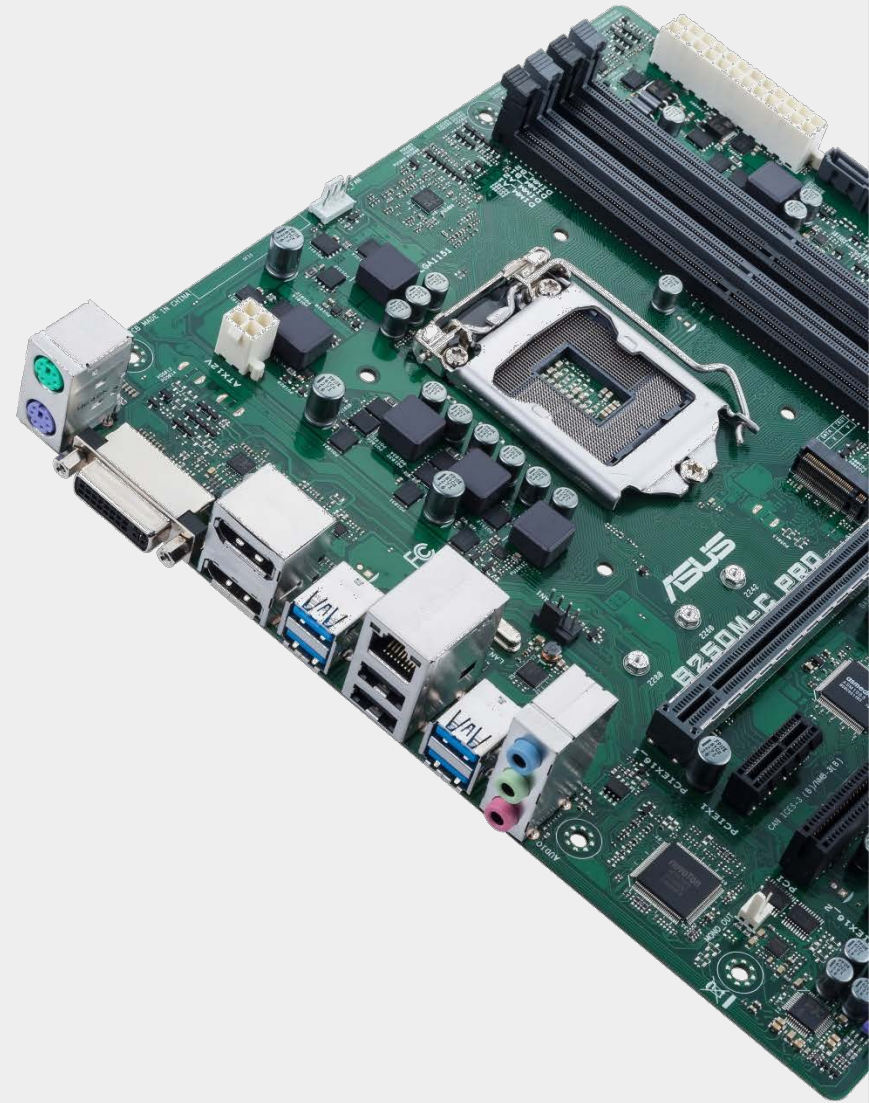
COMMERCIAL
SERIES

B250M-C PRO



Agenda

- **Produce Overview- B250M-C PRO**
 - Product Position / Schedule
 - Product Overview
 - Product Spec
- **Product Unique features**
 - Anti-Moisture Coating
 - Anti-Sulfur Resistors
 - 10K Japanese capacitors
- **Commercial Motherboard**
 - **Dependable Reliability**
24/7 Dependability | Enhanced ESD Design
 - **Efficient Management**
ASUS BIOS Tools | ACC Support
 - **EZ Assembling**
Box-header Design |
Fixed-position Connectors | Colored Connectors



Product Overview

B250M-C PRO

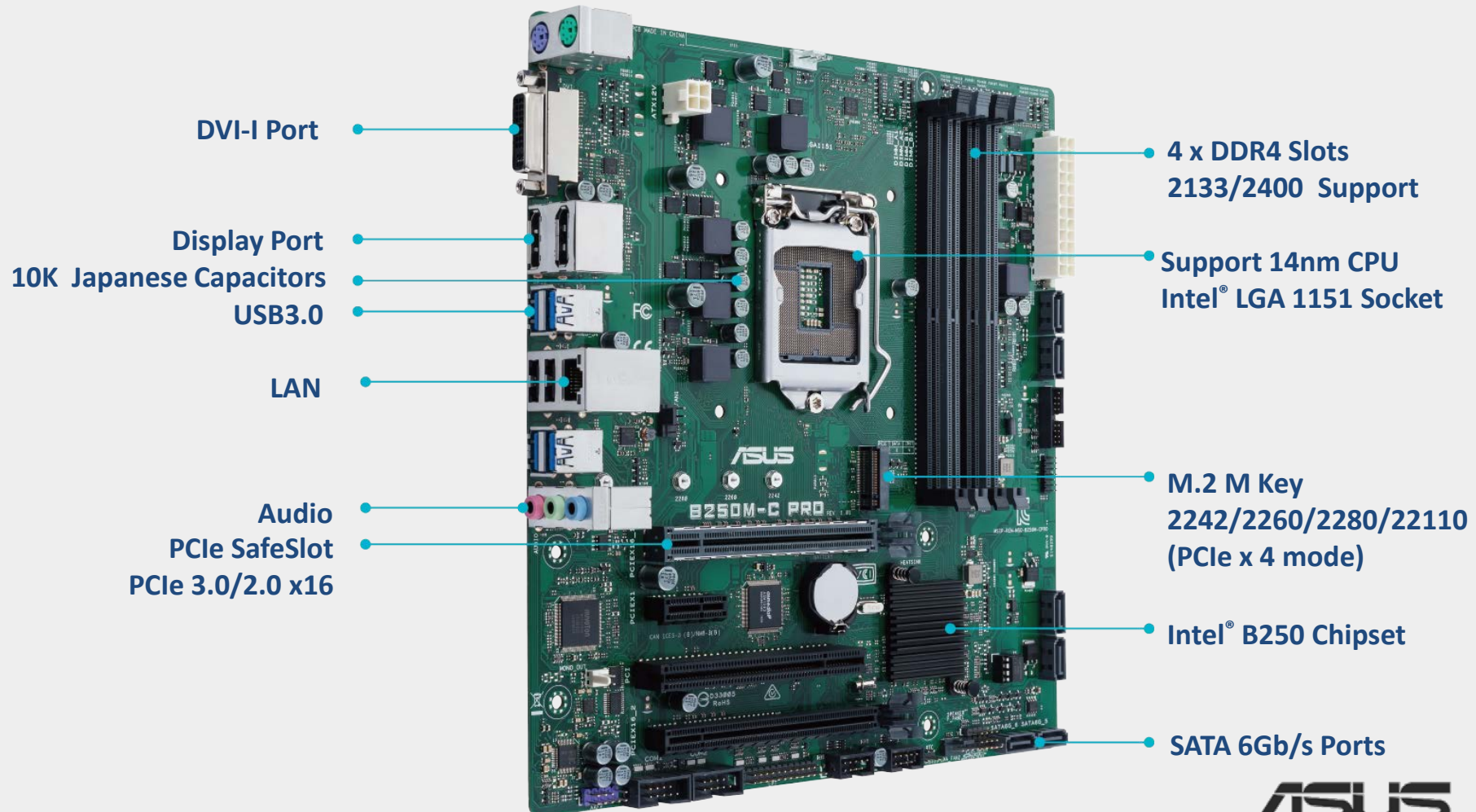
ASUS[®]
IN SEARCH OF INCREDIBLE

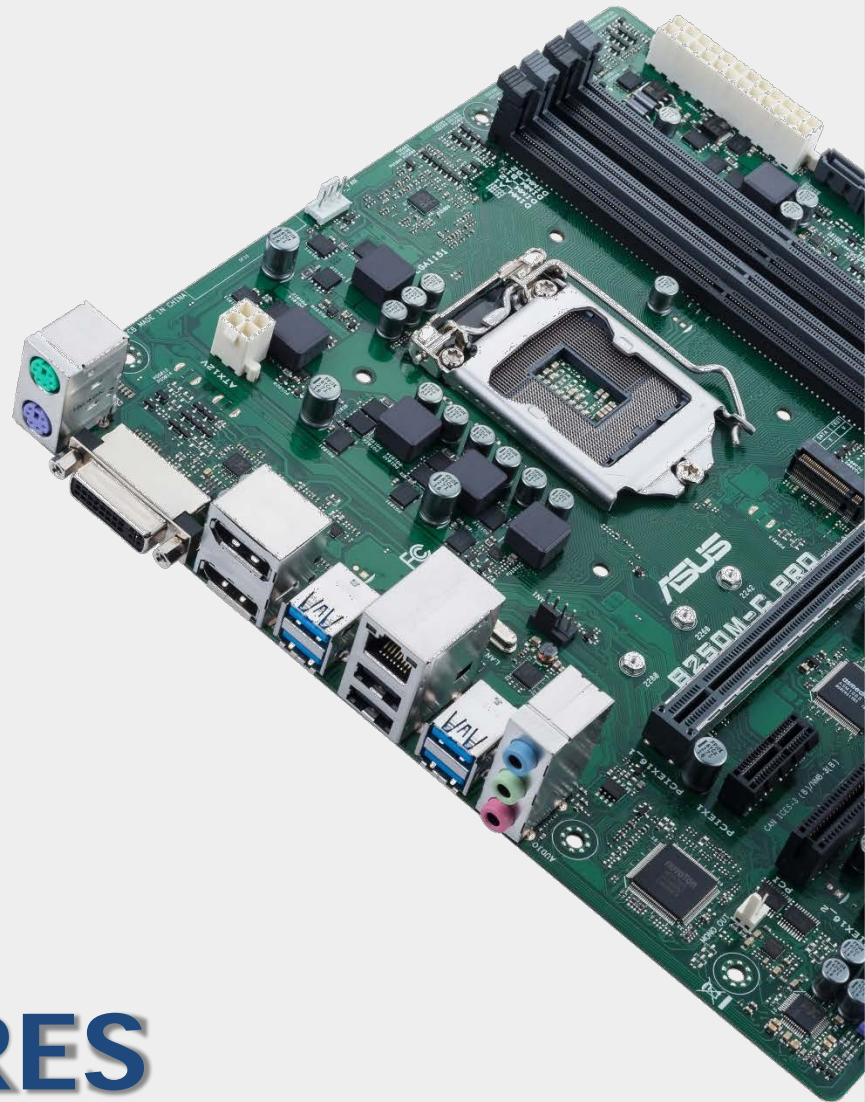
CONFIDENTIAL

Commercial Motherboard

Product Overview

B250M-C PRO





ASUS Commercial Motherboard

B250M-C PRO

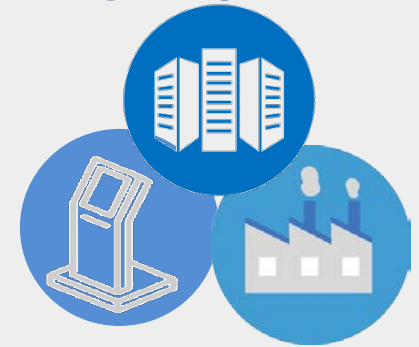
UNIQUE FEATURES

ASUS[®]
IN SEARCH OF INCREDIBLE

CONFIDENTIAL

Designed for Harsh Environment

- IT industry, server farms, communication base stations
- Outdoor and on-road applications, lighting and traffic control
- Marine, mining, agricultural and winery equipment



Anti-moisture coverage

Higher coverage than standard design



Dust and Moisture, OUT!

Anti-sulfur resistors

Long-term protection against electrical shorts



Sulfurization and shorts, OUT!



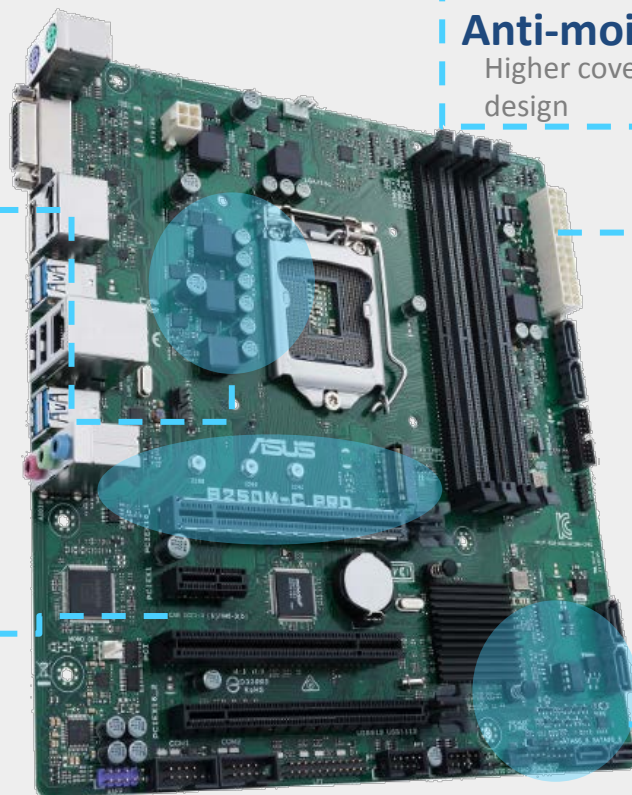
10K Japanese Capacitors

+20% temperature tolerance and 5X longer lifespan

Card slugging and PCIe breaking, OUT!

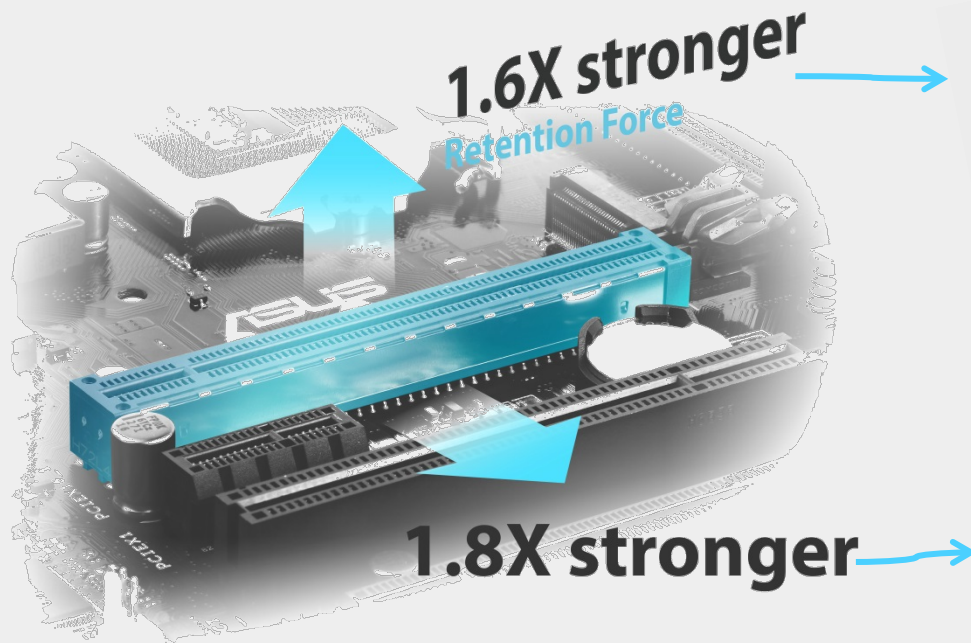
SafeSlot PCIe x16

Fortified PCIe with solid soldering



SafeSlot PCIe x16

Fortified PCIe with solid soldering, Avoid PCIe Slot breaking and prevent the card from sagging.



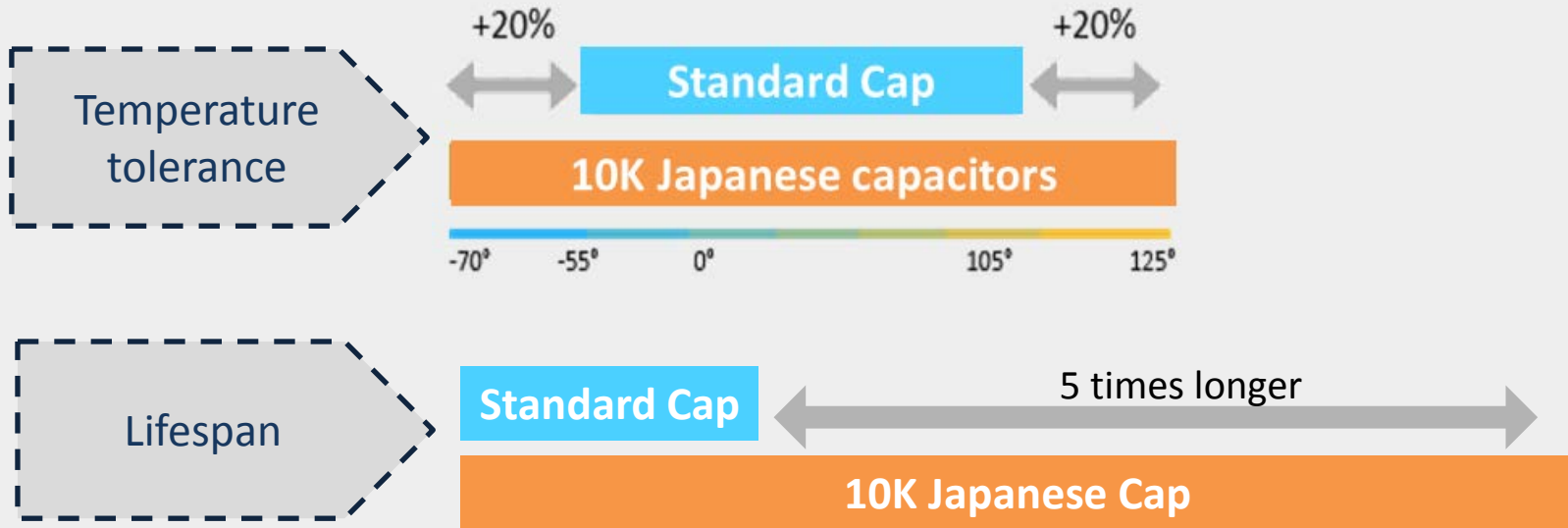
Special Metal design for better strength

SafeSlot is the PCIe slot reinvented by ASUS and engineered to provide superior and shearing resistance which protect your graphics card investment and keep the graphics card firmly in the onboard slot.



10K Japanese capacitors

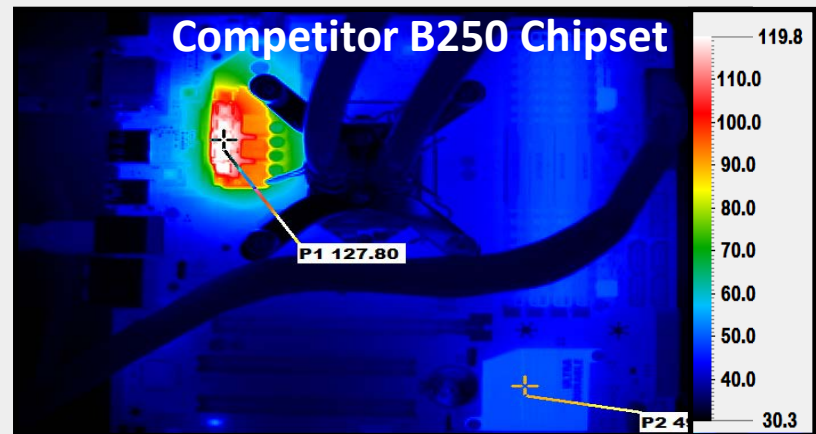
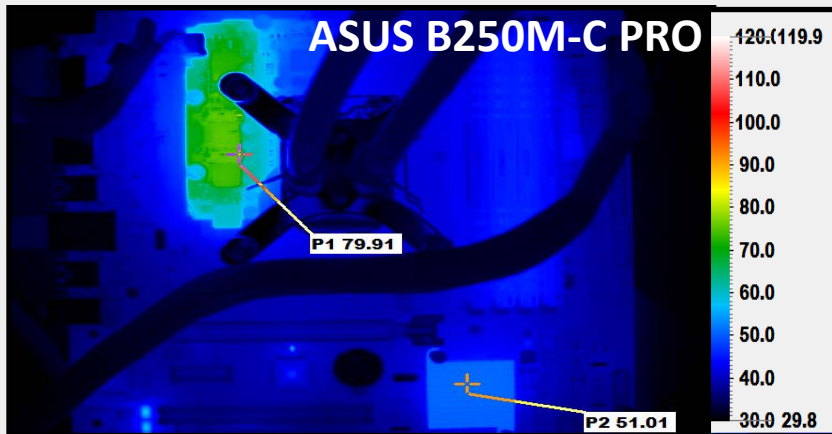
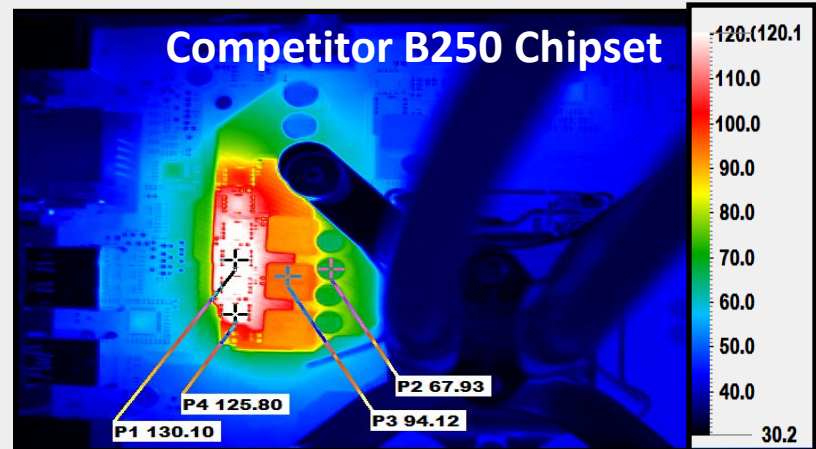
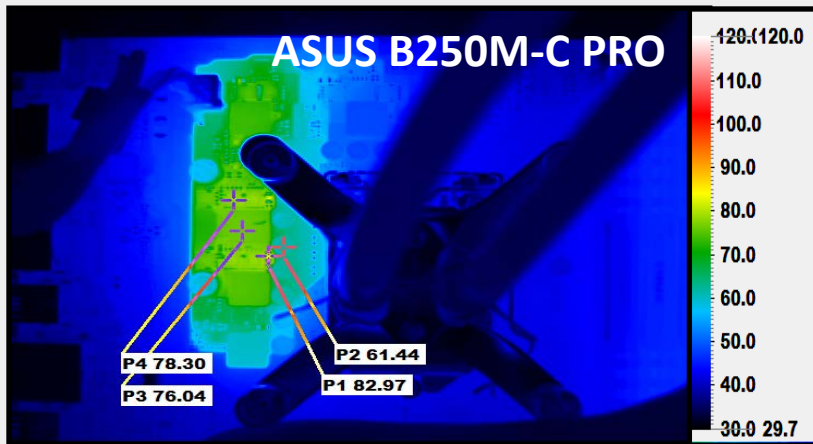
+20% temp. tolerance and 5X longer lifetime usage.



**Unique 10K Japanese capacitors
+20% temperature tolerance
and 5X longer lifespan**

Thermal test

Better thermal performance relative to competitors, this provides a longer life-span of the system and components.

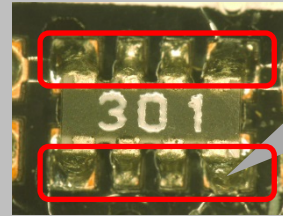


Anti-sulfur resistors

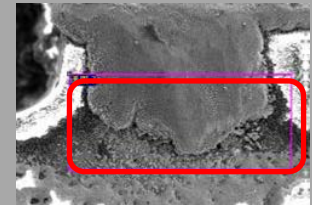
B250M-C PRO can be operated under the harsh environments .



Against Black residue



Against FOS issue
(Flowers of Sulfur)



The critical environmental factors of sulfur pollution:

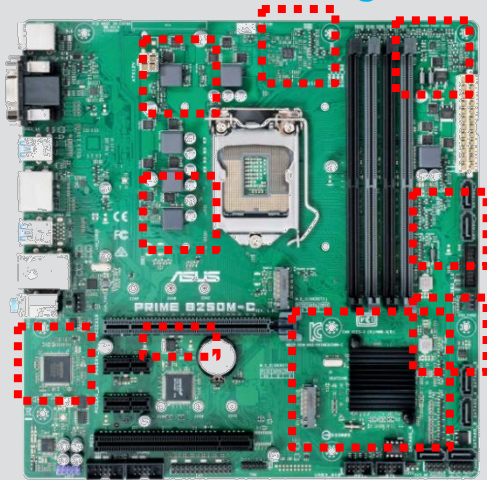
- Where oils, lubricants or fossil fuels are used
- Rubber seals, gaskets, grommets or molded coatings of affected material
- Air polluted industrial area or areas containing biological or volcanic gasses



Reliability- Anti-moisture Coating

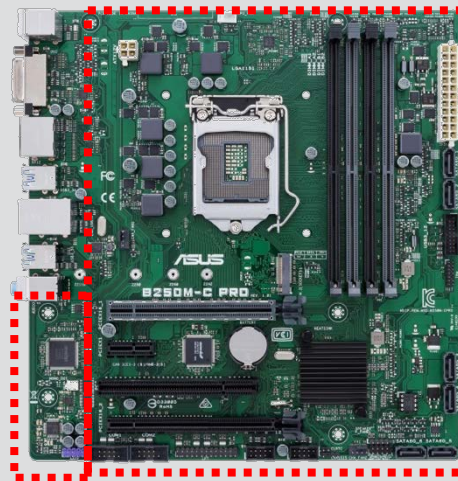
An exceptional corrosion-resistance solution!

Standard design
Partial Coating



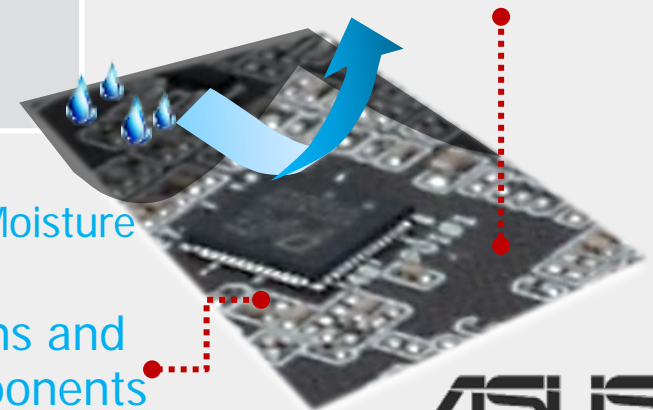
B250M-C PRO

Higher coverage Coating



Build up for populated environments, such as factories, data centers and internet cafes.

Anti-moisture coating
on critical IC



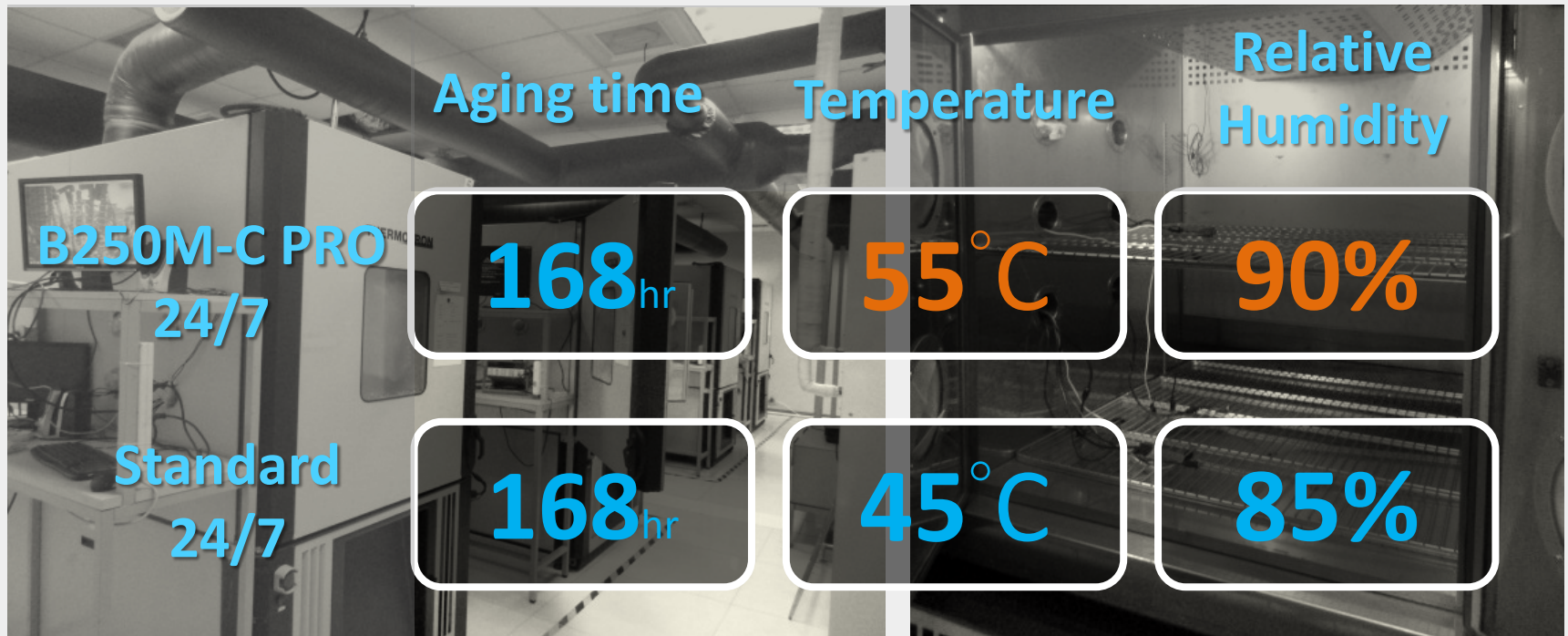
Anti-Moisture Coating provides motherboard protection and higher levels of humidity tolerance.

Exposed IC pins and sensitive components

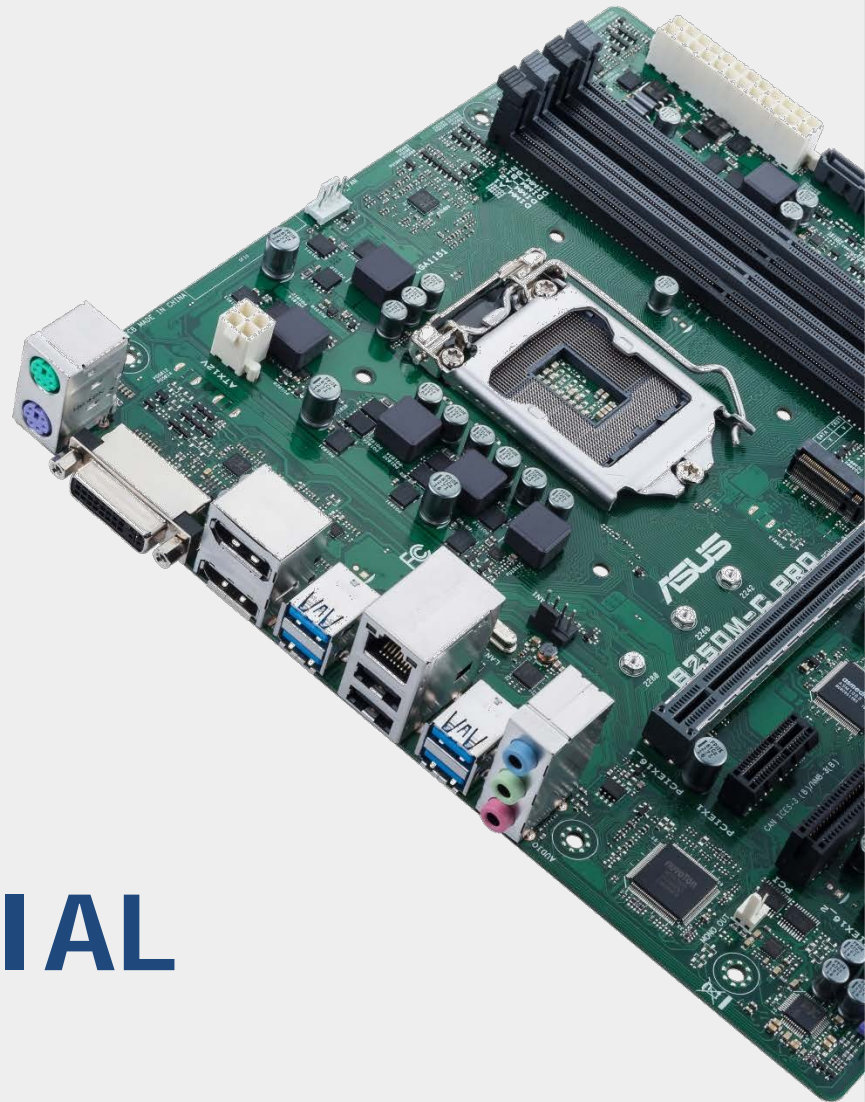
Reliability-24/7 Operation

Ensure safe and smooth operation

B250M-C PRO use military certified components and undergo punishing burn-in tests, with temperatures of up to **55°C** for 168 hours and at humidity levels as **90%**!



The best endurance of temperature and humidity



ASUS Commercial Motherboard

ASUS COMMERCIAL MOTHERBOARD

ASUS[®]
IN SEARCH OF INCREDIBLE

CONFIDENTIAL

Exclusive Features

ASUS is the world's biggest and best-known motherboard brand, renowned for our user-focused design thinking.

The ASUS commercial motherboard provides reliability, stability and easy manageability by 5X Protection III, ASUS BIOS tool, EZ assembling design.

Dependable Reliability

5X Protection III
Anti-Moisture
24/7 Dependability

Maintain the best performance and prolong system lifespan.

Efficiency Management

Commercial BIOS Kit
ASUS Remote Management Tool

Customize, monitor and update your systems with automated ease.

EZ Assembly

Box Headers
Fixed Position Connectors
Color-coded Connectors
Q-Slot and Q-Dimm

Avoid pin damage and benefit from consistent layout across product generations.

Commercial BIOS Kit

Tailored BIOS tools for system integration companies!

ASUS understands how important a customized product impacts users' mind share, experience the brand new ASUS CM BIOS tools for partial BIOS update solution!

DMI value edit tool

Add customer's information such as company name in to BIOS.

BIOS value edit tool

Customized BIOS option.

ME update tool

Update ME without flash whole BIOS.

Logo flash tool

Add customer's LOGO through updating BIOS.

OA key tool

Add or remove OA key.

ASUS BIOS Tools minimize SI's response time!

*Please contact local TSD/FAE to obtain the related BIOS tools for manufacturing requests.

ASUS Commercial Motherboard

Commercial BIOS Kit

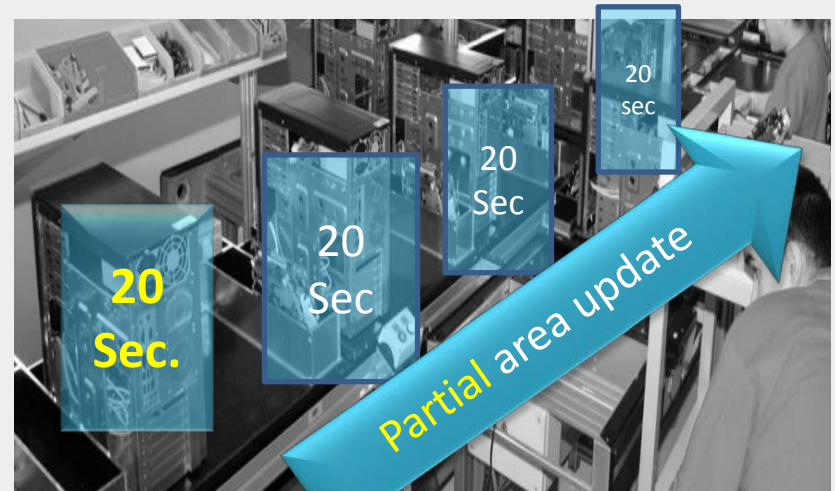
Assume a SI have a **Logo flash** request for **1000pcs** motherboards



ASUS Commercial BIOS Kit
6X Faster
By segmented BIOS design

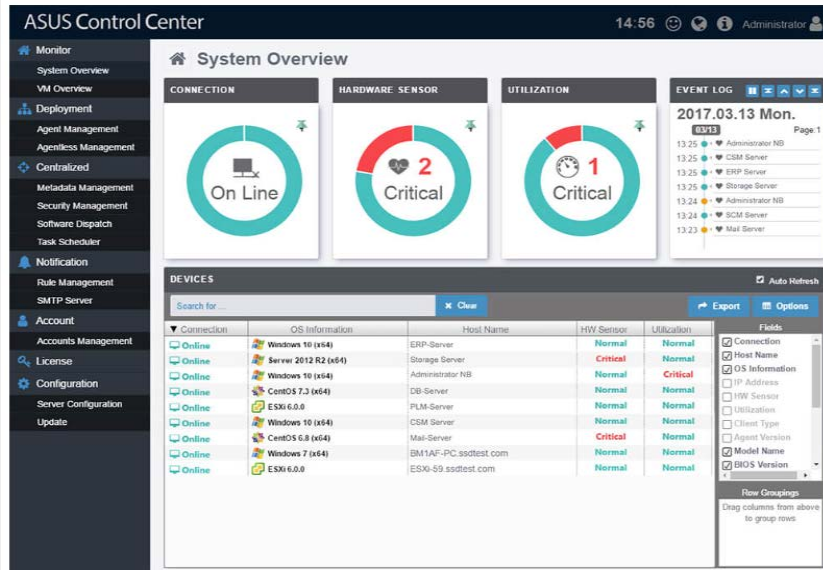
Before(eg. B150M-C)

After(eg. PRIME B250M-C)



ASUS Control Center

Provides high visibility and the best IT-management experiences



ASUS Control Center is a centralized IT-management suite that enhances enterprise productivity with comprehensive control through a very friendly user interface.

*Each purchase of a Corporate Stable Model product entitles the customer to the free Classic edition of Control Center.



Hardware &
Software Monitoring



Remote
Management



Asset
Management



Mobile
Control



Security

ASUS Commercial Motherboard

Reliability-Enhanced ESD Protection

ESD can happen suddenly, and damage is easily underestimated.

ASUS ESD Guards prevent damage from electrostatic discharge, up to +/- 10kV for air discharge and +/-6kV for contact discharge.



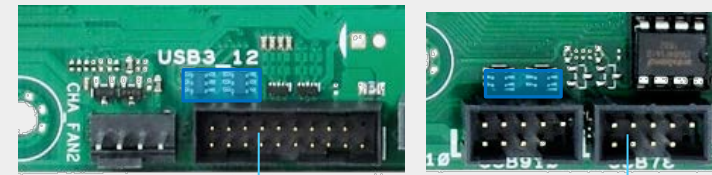
Audio port

LAN port

USB Connectors

DP, D-SUB, DVI,
HDMI port

Keyboard & mouse

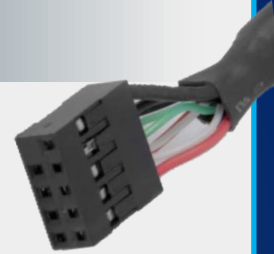
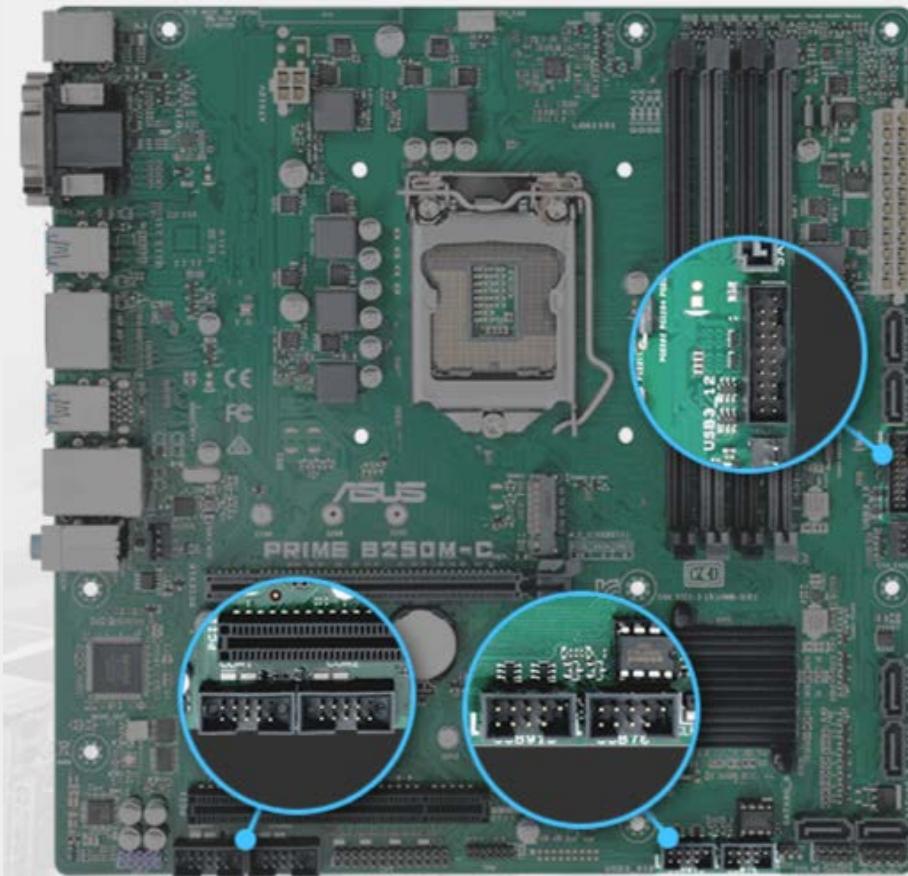


USB 3.0 & USB 2.0 header

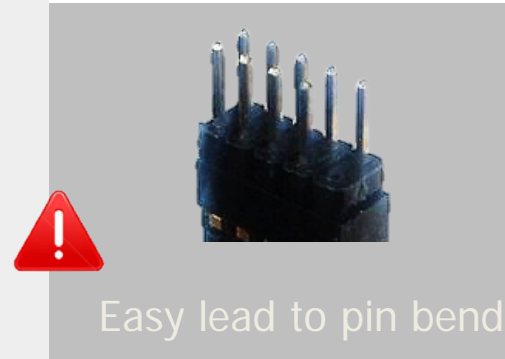
ASUS providing greater component longevity

EZ Assembly-Box-header Design

Box headers for common USB 3.0 & 2.0 headers



Standard design



Easy lead to pin bend

With Box header design

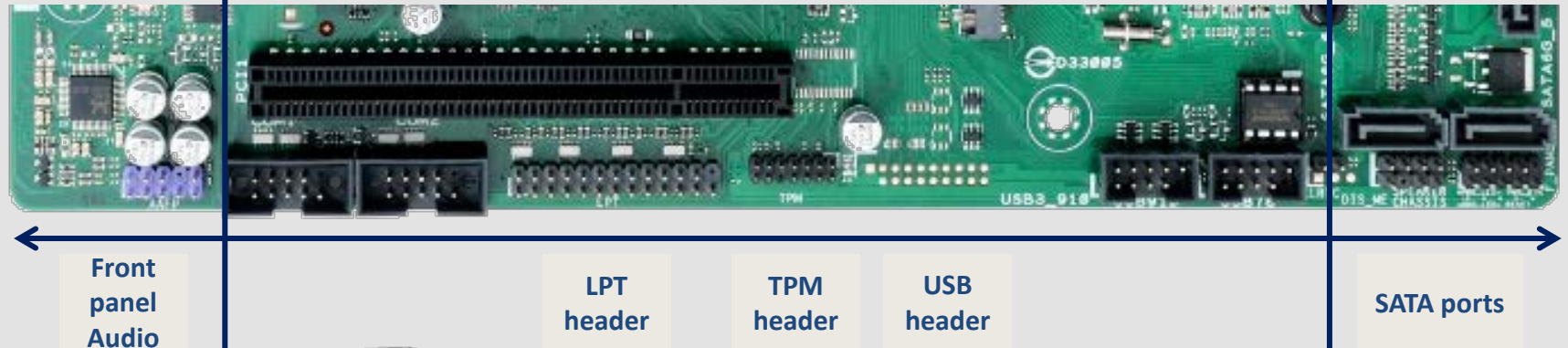
Quickly install and
keep pins safe

ASUS Commercial Motherboard

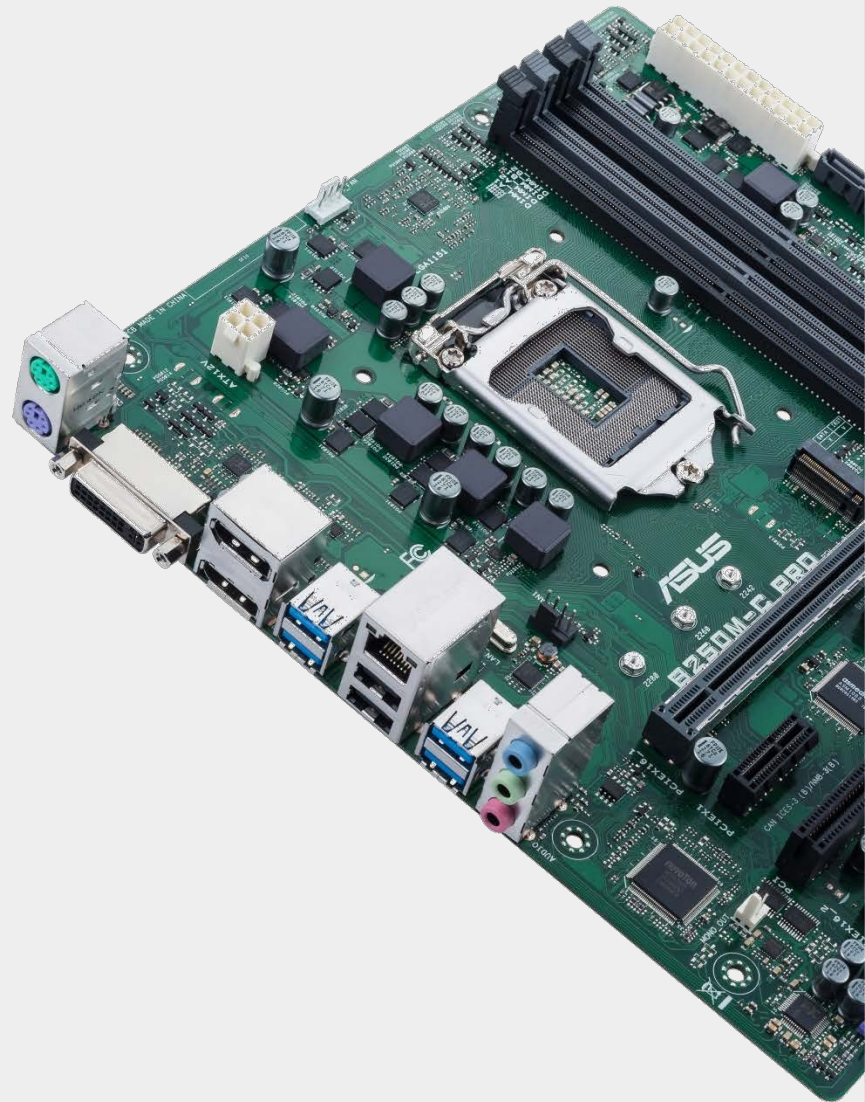
EZ Assembling- Fixed-position Connectors

ASUS promise all CM Series MBs keep key connectors consistence.

No need to worry changing chassis layout when using different MBs!



Promote your competitiveness
with ASUS!



Intel® Optane Memory Ready

SUPERB PERFORMANCE

ASUS
IN SEARCH OF INCREDIBLE

CONFIDENTIAL

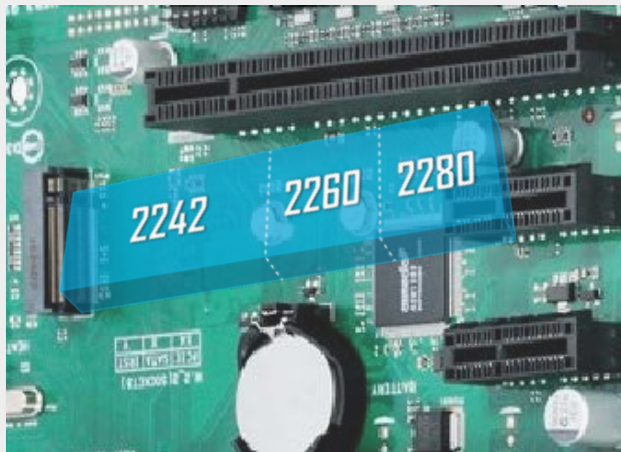
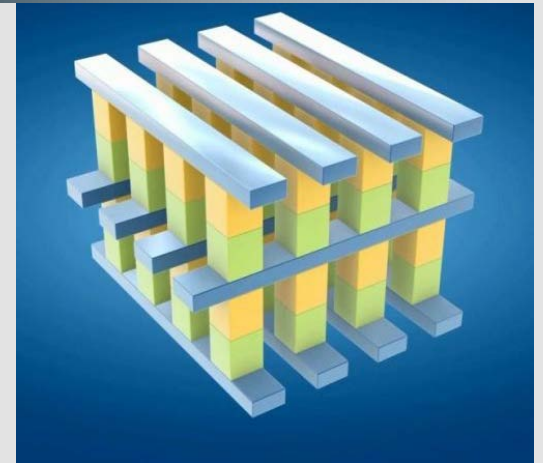
Superb Performance

Intel Optane Memory Ready

Intel® Optane™ memory* is a revolutionary high-speed storage technology — and it's built right into Prime 200 series motherboards! Intel Optane accelerates your storage devices** to reduce boot times and speed application launches, so everything just feels faster, smoother and more fun.

* Enabled by the use of an 7th-generation Intel® processor, driver and BIOS update

** Enabled by relevant BIOS update and drivers



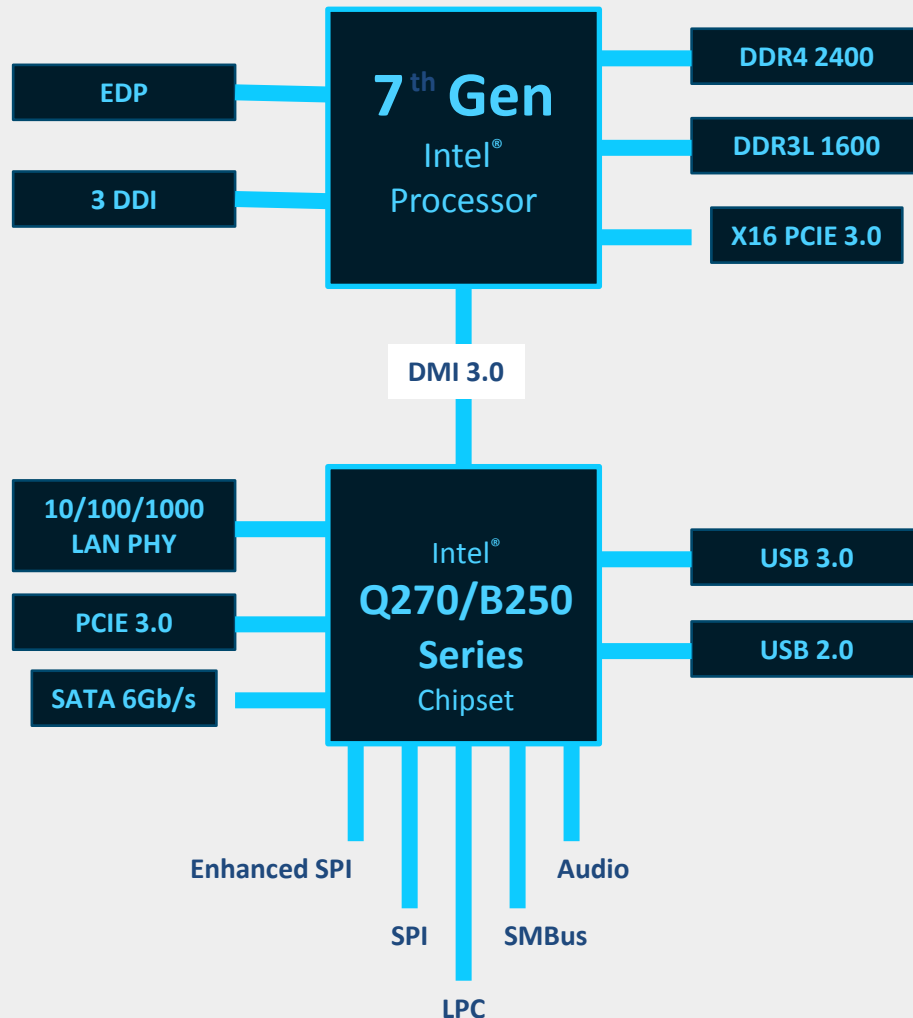
32GB/s M.2*

Speed up with onboard M.2 — up to 32Gbps

With x4 PCI Express 3.0/2.0 bandwidth, M.2 supports up to 32Gbps data-transfer speeds. It is the perfect choice for an operating system or application drive, making your whole PC or professional apps work as fast as possible.

Commercial Motherboard

kabylake Platform Overview



CPU Advantages

- LGA 1151 Socket
- 14nm CPU
- DDR4 & DDR3L support
- Up to 3 independent displays
- Support for Intel® Optane™ Technology*

Chipset Advantages

- PCIE 3.0 support
- PCIE RAID support**
- Up to 8 x USB 3.0 ports***
- Up to 6 x SATA 6Gb/s ports***
- Support for Intel® Optane™ Technology*
- Support Intel® vPro Technology****

CPU Compatibility

- Support 7th Gen Intel® Processor
- Support 6th Gen Intel® Processor*

* Intel® Optane Technology is only supported when using 7th Generation Intel® processors.

** Via Intel® Rapid Storage Technology and onboard HW design.

*** Via Intel I/O Port Flexibility Technology.

**** Intel® vPro will be supported on the platform when only using the corresponding CPU. Only Q-Series Chipset support Intel® vPro Technology.



THANK YOU!