



Philips Brilliance
4K Ultra HD LCD monitor

P Line
24 (23.8"/60.5 cm diag.)
4K UHD (3840 x 2160)

Brilliance

241P6VPJKEB



Precise detail and clarity

with UltraClear 4K UHD resolution

See a new level of detail and clarity with the new Philips UltraClear 4K display! Ultra HD. Four times clearer than Full HD, colours become richer, details become clearer. Experience Ultra High Definition at an ultra-mainstream price.

Sharpest, most brilliant picture yet

- UltraClear 4K UHD (3840 x 2160) resolution for precision
- AH-IPS display for brilliant images with vivid colours
- 1.074 billion colours for smooth colour gradations and detail
- 99% sRGB colour standard for true-to-life colour
- Less eye fatigue with Flicker-Free technology

Features that matter to you

- MultiView enables active dual connect and view at the same time
- SmartErgoBase enables user-friendly ergonomic adjustments
- Webcam with mic to connect and collaborate
- HDMI for quick digital connection
- MHL technology for enjoying mobile content on a big screen
- USB 3.0 Hub for convenient access and fast charging

Sustainable Eco-design

- PowerSensor saves up to 80% energy costs

PHILIPS

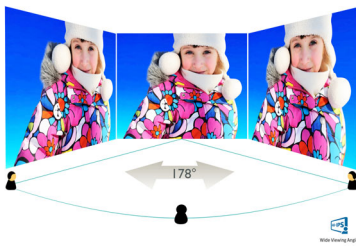
Highlights

UltraClear 4K UHD Resolution



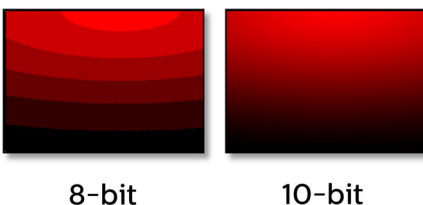
These latest Philips displays utilise high-performance panels to deliver UltraClear, 4K UHD (3840 x 2160) resolution images. Whether you are a professional requiring extremely detailed images for CAD solutions, using 3D graphics applications or are a financial wizard working on huge spreadsheets, Philips displays will make your images and graphics come alive.

AH-IPS technology



This latest Philips display uses advanced AH-IPS panels, resulting in superior colour reproduction, response time and power consumption. Unlike standard TN panels, AH-IPS panels show consistent colour even at 178-degree wide angles and in pivot mode. With remarkable performance, AH-IPS is best suited for applications demanding colour accuracy and consistent brightness at all times, such as photo retouching, graphics applications and web browsing.

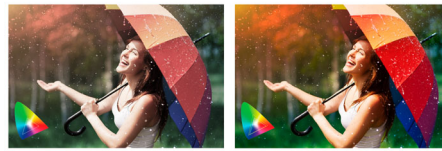
10-bit colours



The 10-bit display delivers rich colour depth with 1.074 billion colours and 12-bit internal processing for recreating smooth, natural

colours without gradations and colour banding.

Full 99% sRGB Colour



Experience vivid and true-to-life colours. With over 99% coverage of sRGB colour standard, you can have confidence the colours you see on the display are accurate and true-to-life.

Flicker-Free technology



Due to the way brightness is controlled on LED-backlit screens, some users experience flicker on their screen which causes eye fatigue. Philips Flicker-Free technology applies a new solution to regulate brightness and reduce flicker for more comfortable viewing.

MultiView technology

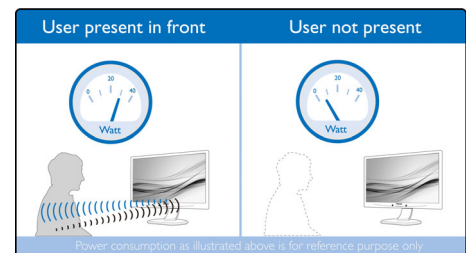
With the ultra-high resolution Philips MultiView display you can now experience a world of connectivity in comfort whether at the office or at home. MultiView enables active dual connect and view so that you can work with multiple devices like a PC and Notebook side-by-side simultaneously, making complex multi-tasking work a breeze. Watching live football feeds from your set-top box on the right-hand side, while browsing the Internet from your notebook on the left is now easy. You may want to keep an eye on the live news feed with audio in the small window, while working on your latest blog.

SmartErgoBase



The SmartErgoBase is a monitor base that delivers ergonomic display comfort and provides cable management. The user-friendly height, swivel, tilt and rotation angle adjustments of the base allow the monitor to be positioned for maximum comfort to help ease the physical strains of a long workday. In addition, cable management reduces cable clutter and keeps the workspace neat and professional.

PowerSensor



PowerSensor is a built-in 'people sensor' that transmits and receives harmless infrared signals to determine if the user is present and then automatically reduces monitor brightness when the user steps away from the desk, cutting energy costs by up to 80 percent and prolonging monitor life.

Webcam

Embedded webcam and microphone enables you to view and communicate with your colleagues and clients. This simple solution allows you to collaborate and share, saving precious time and travel-related costs.



Specifications

Picture/Display

- LCD panel type: AH-IPS LCD
- Backlight type: W-LED system
- Panel Size: 23.8 inch/60.5 cm
- Effective viewing area: 527.04 (H) x 296.46 (V)
- Aspect ratio: 16:9
- Optimum resolution: 3840 x 2160 @ 60 Hz
- Response time (typical): 5 ms (Grey to Grey)*
- Brightness: 300 cd/m²
- Contrast ratio (typical): 1000:1
- SmartContrast: 50,000,000:1
- Pixel pitch: 0.137 x 0.137 mm
- Viewing angle: 178° (H)/178° (V), @ C/R > 10
- Picture enhancement: SmartImage
- Display colours: 1.07G (8bits + FRC)
- Colour gamut (typical): 99% sRGB
- Scanning Frequency: 30 - 83 kHz (H) / 56 - 76 Hz (V)
- MHL: 1080P @ 60 Hz
- Brightness uniformity: 93–105%
- Delta E: <3

Connectivity

- Signal Input: VGA (Analogue), DVI-Dual Link (digital, HDCP), DisplayPort, HDMI (2.0) - MHL (2.0) x 1
- USB: USB 3.0 x 3 (1 w/fast charging)*
- Sync Input: Separate Sync, Sync on Green
- Audio (In/Out): PC audio-in, Headphone out

Convenience

- Built-in Speakers: 2 W x 2
- Built-in webcam: 2.0 megapixel camera with microphone and LED indicator
- MultiView: PIP/PBP mode, 2 x devices
- User convenience: SmartImage, Multi-view, User Menu, Power On/Off
- Control software: SmartControl Premium
- OSD Languages: Brazil Portuguese, Czech, Dutch, English, Finnish, French, German, Greek, Hungarian, Italian, Japanese, Korean, Polish, Portuguese, Russian, Simplified Chinese, Spanish, Swedish, Traditional Chinese, Turkish, Ukrainian
- Other convenience: Kensington lock, VESA mount (100 x 100 mm)
- Plug and Play Compatibility: DDC/CI, Mac OS X, sRGB, Windows 8.1 / 8 / 7

Stand

- Height adjustment: 130 mm
- Pivot: 90 degree
- Swivel: -175/+175 degree
- Tilt: -5/20 degree

Power

- ECO mode: 20.6 W (typ.)
- On mode: 30.11 W (EnergyStar 6.0 test method)
- Standby mode: < 0.5 W (typ.)
- Off mode: < 0.5 W (typ.)
- Power LED indicator: Operation - White, Standby mode - White (flashing)
- Power supply: External, 100-240 VAC, 50-60 Hz

Dimensions

- Product with stand (mm): 563 x 511 x 257 mm
- Product without stand (mm): 563 x 351 x 53 mm
- Packaging in mm (W x H x D): 619 x 525 x 184 mm

Weight

- Product with stand (kg): 5.85 kg
- Product without stand (kg): 3.36 kg
- Product with packaging (kg): 9.63 kg

Operating conditions

- Temperature range (operation): 0°C to 40°C °C
- Temperature range (storage): -20°C to 60°C °C
- Relative humidity: 20–80% %
- Altitude: Operation: +12,000 ft (3658 m), Non-operation: +40,000 ft (12,192 m)
- MTBF (demonstrated): 70,000 hrs (excluded backlight)

Sustainability

- Environmental and energy: PowerSensor, LightSensor, EnergyStar 6.0, EPEAT Gold*, TCO edge, RoHS
- Recyclable packaging material: 100 %
- Post-consumer recycled plastic: 65%
- Specific Substances: PVC/BFR free housing, Mercury free, Lead free

Compliance and standards

- Regulatory Approvals: CE Mark, FCC Class B, SEMKO, cETLus, CU-EAC, TCO certified, TUV Ergo, TUV/GS, EPA, PSB, WEEE, UKRAINIAN, CECP, PSE, KC, ICES-003, E-standby, J-MOSS, RCM

Cabinet

- Front bezel: Black
- Rear cover: Black
- Foot: Black
- Finish: Texture

What's in the box?

- Monitor with stand
- Cables: VGA, DVI, DP, Audio, USB, MHL, Power
- User Documentation



Issue date 2017-02-09

Version: 4.0.1

12 NC: 8670 001 26477
EAN: 87 12581 73431 2

© 2017 Koninklijke Philips N.V.
All Rights reserved.

Specifications are subject to change without notice.
Trademarks are the property of Koninklijke Philips N.V.
or their respective owners.

www.philips.com

* This Philips display is MHL-certified. However, if your MHL device does not connect or work correctly, check with your MHL device FAQ or vendor directly for instructions. The policy of your device manufacturer may require you to purchase its brand-specific MHL cable or adapter in order for it to work

* Requires optional MHL-certified mobile device and MHL cable (not included). Please check with your MHL device vendor for compatibility.

* Standby/Off energy saving of ErP is not applicable for the MHL charging functionality

* For a complete list of MHL-enabled products, refer to www.mhlconsortium.org

* EPEAT Gold is valid only where Philips registers the product. Please visit www.epeat.net for registration status in your country.

* "AH-IPS" word mark/trademark and related patents on technologies belong to their respective owners.

* Fast charging through BC 1.2 standard

* Response time value equal to SmartResponse